

Smart Wi-Fi Socket

Instructions

WPA-1



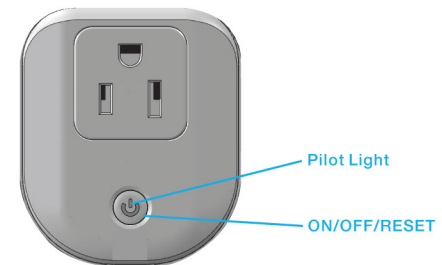
Safety

Before using your Smart Wi-Fi Socket for the first time, please read the following instructions.

- * Observe all precautions while operating the Smart Wi-Fi Socket.
- * Do not use a power outlet other than a home-use power outlet.
- * Do not use the adapter if the housing is damaged.
- * Never force the AC plug adapter into a power outlet.
- * When connecting or disconnecting your Smart Wi-Fi Socket, always hold it by its sides of the main body.
- Keep your fingers away from the metal blades or pins.
- * Always leave space around your Smart Wi-Fi Socket to allow air flow to cool the adapter.
- * Don't use your Smart Wi-Fi Socket in wet locations, such as near washbasins, bathtubs, shower stalls, and so on.
- * The Smart Wi-Fi Socket is a high-voltage components and should not be opened for any reason.
- * Do not insert foreign objects or liquids into the Smart Wi-Fi Socket.
- * Keep out of reach of children.
 - Do not allow children to play with the Smart Wi-Fi Socket.
 - They could hurt themselves or others and could accidentally damage the product.
- * If the power sockets or plug pins appears to be damaged, discontinue use immediately.
- * Do not modify, repair or dismantle the product. Doing so may result in fire, electric shock, complete breakdown of the product, etc.
- * Do not use this product in hazardous locations.
- * Do not dispose of this product in a fire, as it may explode

Product Profile

WPA-1 Smart Wi-Fi Sockets is a socket that lets you to remotely control and manage the power by your phone through an APP. Providing a convenient lifestyle.



Configuration: Quick flashing Red and Green
Connected & Power On: Red is on
Connected & Power Off: Slow flashing Red

Attentions:
Please use the socket in dry circumstance. Do not set working power more than 1KW. Working current can not exceed 10A.

Installation

1. Plug the Smart Wi-Fi Socket into a fixed outlet



2. Press the ON/OFF/RESET button till the pilot light turn to quick flashing red and green



Scan QR CODE to Download the APP

Support Android, IOS

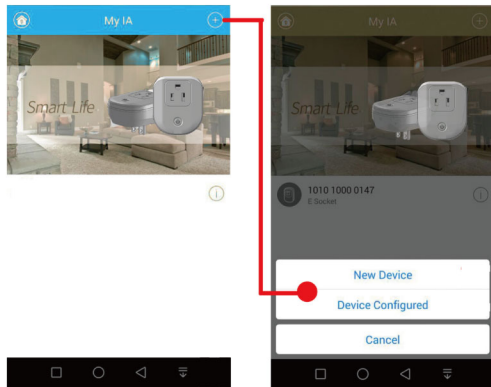


You may also search ' TBC APP Name ' in APP STORE or GOOGLE PLAY to download the app.

Connect to Networks

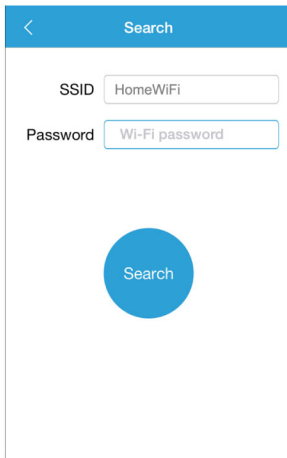
a. Add a New Device

Connect your smart phone with Wi-Fi. Open the App and click the add button. Choose 'New Device'



b. Wi-Fi Configuration

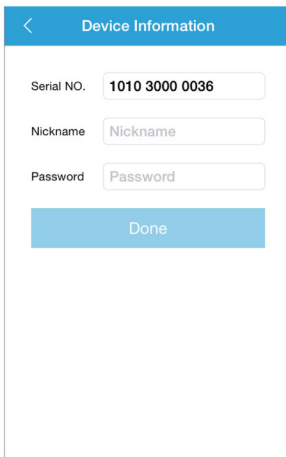
Please enter Wi-Fi password, and click the search button



When the Red light is on, the smart socket is connected with network successfully. If the Red light is quick flashing, please check your network and password.

c. Name your device

Input the name of your device and Default Password '123456'

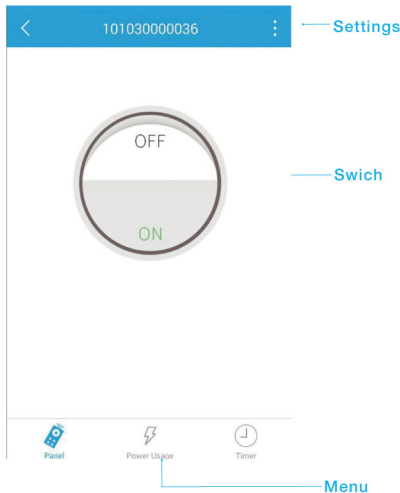


*The screenshots are for reference. The interface may be different due to software update.

Functions

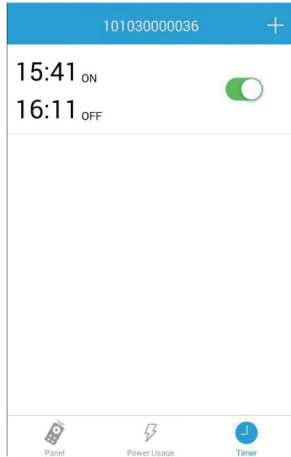
a. Switch panel

When the 'ON' turns green, the socket is on.
When the 'OFF' turns red, the socket is off.



b. Timer

It supports timing switch on/off, setting working period and cycle timing.



FAQ

1. The cause of Wi-Fi configuration failure.
 - a. Please kindly check if the pilot light flashes in red.
 - b. Please kindly check if the network status of wireless router is normal, the password of Wi-Fi is correct.
 - c. Please make sure the mobile frequency is 2.4G.
2. If the Wi-Fi password of wireless router or the name of Wi-Fi changes.

A: Please reset to factory configuration, then input the new password of Wi-Fi.
3. How to reset to factory configuration of the Smart Wi-Fi Socket?

A: Under the status of power-on, long press the reset button of the Smart Wi-Fi Socket till the pilot light is in red flash.
4. Is there a one-to-one correspondence between the APP "TBC" and Smart Wi-Fi Socket?

A: It can control multi devices in APP " TBC ", one Smart Wi-Fi Socket can be controlled by different persons.
5. How to modify the password of the Smart Wi-Fi Socket?

A: After opening the APP "TBC" , please use your finger to slide the name of the socket to the left, and then choose to edit and modify the password.
6. How to modify the name of the Smart Wi-Fi Socket?

A: After opening the APP "TBC", please use your finger to slide the name of the socket to the left, and then choose the edit and modify the name.
7. How to view device information of the Smart Wi-Fi Socket?

A: In the control panel of the Smart Wi-Fi socket, please click the 'Settings' in the top right corner, then choose the 'System Setting' and 'Device information'.
8. What is the maximum number of timers could be set for the Smart Wi-Fi Socket?

A: Maximum 20 timers could be set on the Smart Wi-Fi Socket by the App " TBC ".
9. How to add the Smart Wi-Fi Socket you configured into other people's APP " TBC "?

A: Option 1, The APP may automatically scan the configured Smart Wi-Fi Socket in LAN.
Option 2, please click "+" on the App homepage, and choose the configured device.

FCC Caution

This device complies with part 15 of the FCC Rules. Operation is subject to the following two conditions:
(1) This device may not cause harmful interference, and
(2) this device must accept any interference received, including interference that may cause undesired operation.

Any Changes or modifications not expressly approved by the party responsible for compliance could void the user's authority to operate the equipment.

Note:
This equipment has been tested and found to comply with the limits for a Class B digital device, pursuant to part 15 of the FCC Rules. These limits are designed to provide reasonable protection against harmful interference in a residential installation. This equipment generates uses and can radiate radio frequency energy and, if not installed and used in accordance with the instructions, may cause harmful interference to radio communications. However, there is no guarantee that interference will not occur in a particular installation. If this equipment does cause harmful interference to radio or television reception, which can be determined by turning the equipment off and on, the user is encouraged to try to correct the interference by one or more of the following measures:

- Reorient or relocate the receiving antenna.
 - Increase the separation between the equipment and receiver.
 - Connect the equipment into an outlet on a circuit different from that to which the receiver is connected.
 - Consult the dealer or an experienced radio/TV technician for help.
- The antenna(s) used for this transmitter must be installed to provide a separation distance of at least 20 cm from all persons and must not be co-located or operating in conjunction with any other antenna or transmitter, except in accordance with FCC multi-transmitter product procedures.