

RDS-32iTx(900MHz) WR Survey Meter

Radiation: γ and x-rays

External probes: α , β , γ , n

SNr:

20567168/C

Effective Range:

0.3 μ Sv/h - 10 Sv/h / 0.1 μ Sv - 100 Sv

30 μ rem/h - 1000 rem/h / 10 μ rem - 10 krem

Energy: H*(10), 48 keV - 3 MeV

65 keV - 3 MeV (>30 mSv/h)

Angle: 0° to $\pm 45^\circ$; reference from top of device

Operating environment: -10 - +40 °C, IP 67

Center Key: ON / MENU / ENTER / OFF

Arrow Key: Navigate / Shortcut: press > 2 sec

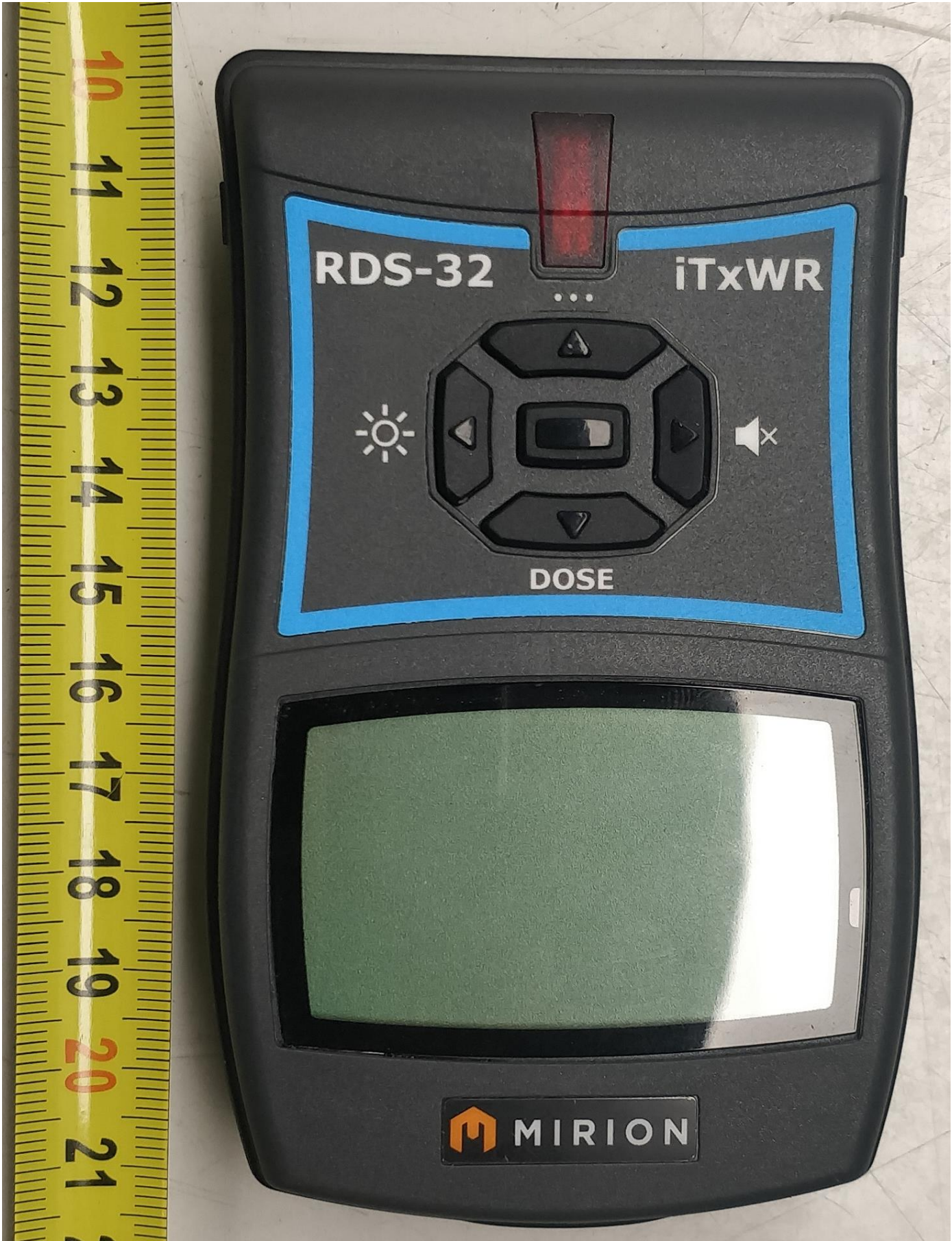
FCC ID: 2AH18-RDS-32 contains FCC ID: 2AH18-XB900HP

IC: 26167-RDS32 contains IC: 26167-XB900HP

Mirion Technologies (RADOS) Oy

2 x AA (LR6 /HR6)





RDS-32

iTxWR

...



DOSE

 MIRION



