

FCC WARNINGS

- Warning: Changes or modifications to this unit not expressly approved by the party responsible for compliance could void the user's authority to operate the equipment.

NOTE: This equipment has been tested and found to comply with the limits for a Class B digital device, pursuant to Part 15 of the FCC Rules. These limits are designed to provide reasonable protection against harmful interference in a residential installation. This equipment generates, uses, and can radiate radio frequency energy and, if not installed and used in accordance with the instructions, may cause harmful interference to radio communications. However, there is no guarantee that interference will not occur in a particular installation. If this equipment does cause harmful interference to radio or television reception, which can be determined by turning the equipment off and on, the user is encouraged to try to correct the interference by one or more of the following measures:

- Reorient or relocate the receiving antenna.
- Increase the separation between the equipment and receiver.
- Connect the equipment into an outlet on a circuit different from that to which the receiver is connected.
- Consult the dealer or an experienced radio/TV technician for help.

THIS DEVICE COMPLIES WITH PART 15 OF THE FCC RULES. OPERATION IS SUBJECT TO THE FOLLOWING TWO CONDITIONS:
1) THIS DEVICE MAY NOT CAUSE HARMFUL INTERFERENCE, AND
2) THIS DEVICE MUST ACCEPT ANY INTERFERENCE RECEIVED, INCLUDING INTERFERENCE THAT MAY CAUSE UNDESIRE OPERATION.

ADDITIONAL WARNINGS

- WARNING: To prevent fire or shock hazards, do not expose this unit to rain or moisture.
- WARNING : Where the mains plug or appliance coupler is used as the disconnect device, such disconnect device shall remain readily operable.
- Lithium batteries, like all rechargeable batteries, are recyclable and should be recycled or disposed of according to state and local guidelines. They should never be disposed of in normal household waste and they should never be incinerated, as they might explode. Contact your local government for disposal or recycling practices in your area.
- **To avoid hearing damage**, make sure that the volume on your music player is turned down before connecting your earbuds or headphones. After placing earbuds in/on your ears, gradually turn up the volume until you reach a comfortable listening level.



WARNING : This product can expose you to chemicals including lead, which is known to the State of California to cause cancer and birth defects or other reproductive harm. For more information go to www.P65Warnings.ca.gov. **This product meets and complies with all Federal regulations.**

International Support

To download this User's Guide in English, Spanish, or French, or to get answers to frequently asked questions, visit the support section at:
www.iLiveElectronics.com

Para descargar este Manual del Usuario en Inglés, Español y Francés, o para obtener respuestas a preguntas frecuentes, visite la sección de apoyo en:
www.iLiveElectronics.com

Pour télécharger ce guide de l'utilisateur en Anglais, Espagnol ou Français, ou pour obtenir des réponses à des questions fréquemment posées, consultez la rubrique d'assistance sur:
www.iLiveElectronics.com

Contact Information

Website: www.iLiveElectronics.com
Email Support: prodinfo@dpiinc.com
Email Parts: partsinfo@dpiinc.com
Phone Support: 1-888-999-4215

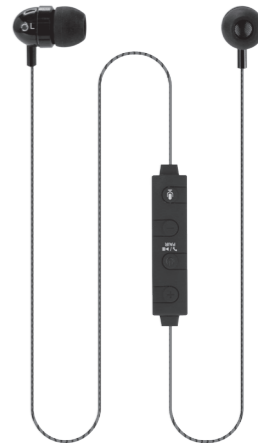
Warranty

For Warranty Information and the most up-to-date version of this User's Guide, go to:
www.iLiveElectronics.com.



Specifications are subject to change without notice.

Copyright © 2019 Digital Products International (DPI, Inc.)
All other trademarks appearing herein are the property of their respective owners.



Bluetooth Earbuds

User's Guide for Model IAEB09 v2315-01

Features

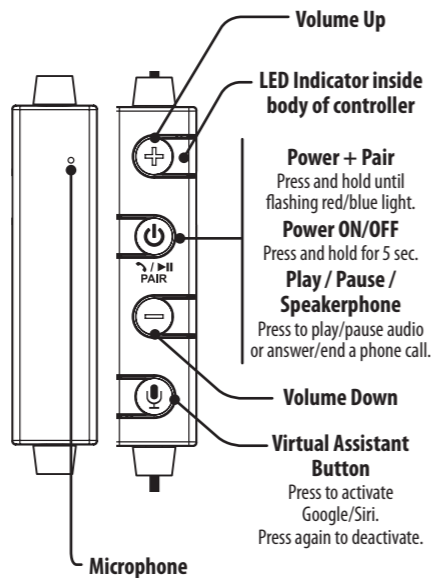
- Compatible with Apple and Google voice assistants*
- Supports Bluetooth Wireless 5.0
- Wireless range: 49 feet
- Supports profile A2DP (Advanced Audio Distribution Profile)
- Voice prompts announce earbud operations
- Digital volume control
- Micro-USB port for battery recharge
- DC battery power: built-in rechargeable lithium ion battery
- Playtime: approximately 2 hours

Includes

- 3 sets of ear tips: small/medium/large
- Micro-USB to USB charging cable

*App download or software updates may be required. Mobile carrier/data charges may apply. Specifications, software updates, and third party content are subject to change without prior notice.

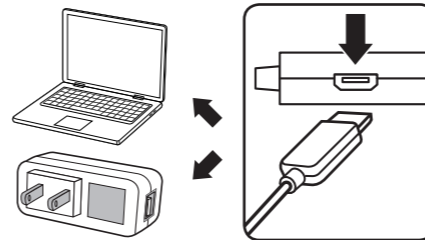
Overview & Controls



Charging the Battery

Initial charge time is approximately 2 hours. Charge fully before use. The low battery indicator will flash for 1 minute and a voice will announce, "Low Battery," then the unit will automatically power OFF.

- Using a **Micro-USB to USB** cable (included), connect to the USB port of a powered on computer or USB power adaptor (not included) to charge.



Power Status	Indicator Light
Power ON	Flashing Blue light
Low Battery	Flashing Red light
Charging	Solid Red light
Finished Charging	Solid Blue light

Bluetooth Connection

1. This unit features automatic device pairing and is ready to pair as soon as it powers on. Power on the earbuds by pressing and holding the Power button, then a voice will announce, "Bluetooth is connecting," and the indicator light will alternate between flashing red and blue. The earbuds are ready to pair.
2. Open the Bluetooth Settings menu on your smartphone or tablet and select **IAEB09** from the list. Refer to the user manual of your device for more specific instructions on Bluetooth pairing.
3. When successfully connected, a voice will announce, "Bluetooth connected," and the indicator light will turn solid blue. Use your smartphone or tablet to select and play media. Use the controls on your device or the earbuds to play, pause, or skip audio, and adjust the volume.
4. After initial pairing, the earbuds will automatically connect to the last device used. To pair to another device, press and hold the **Power/Pair** button on the earbuds and connect to it using the new device.

Google Assistant

Note: Use Google Assistant on Android devices.

Download

1. Download Google Assistant to your device by searching for the **Google Assistant app** in the Google Play™ Store, or Apple App Store®.
2. Connect to the earbuds using the Bluetooth Connection steps.
3. After pairing, Google Assistant is ready to use. Press the **Virtual Assistant Button** and say "Hey Google," or your custom phrase to begin. Use the Google Assistant app on your smartphone or tablet for more information and to adjust settings.

Apple Siri

Note: Apple Siri with "Hey Siri" support is built into Apple devices running iOS 12 or later, therefore no app download is needed. **Note: Apple Siri is not available on Google or Android devices.**

1. Connect to the earbuds using the Bluetooth Connection steps. Press the **Virtual Assistant Button** and say, "Hey Siri..." to begin.