

FCC WARNINGS

- Warning: Changes or modifications to this unit not expressly approved by the party responsible for compliance could void the user's authority to operate the equipment.

This device complies with part 15 of the FCC rules. Operation is subject to the following two conditions:

- (1) this device may not cause harmful interference, and
- (2) this device must accept any interference received, including interference that may cause undesired operation.

ADDITIONAL WARNINGS

- WARNING: To prevent fire or shock hazards, do not expose this unit to rain or moisture.
- WARNING : Where the mains plug or appliance coupler is used as the disconnect device, such disconnect device shall remain readily operable.
- Lithium batteries, like all rechargeable batteries, are recyclable and should be recycled or disposed of according to state and local guidelines. They should never be disposed of in normal household waste, and they should never be incinerated, as they might explode. Contact your local government for disposal or recycling practices in your area.
- WARNING: This product may contain chemicals known to the State of California to cause birth defects, or other reproductive harm (California Prop 65). Wash hands after handling.
- This product meets and complies with all Federal regulations.
- **To avoid hearing damage**, make sure that the volume on your music player is turned down before connecting your headphones. After placing headphones in/on your ears, gradually turn up the volume until you reach a comfortable listening level.

International Support

To download this User's Guide in English, Spanish, or French, or to get answers to frequently asked questions, visit the support section at:
www.iLiveElectronics.com

Para descargar este Manual del Usuario en Inglés, Español y Francés, o para obtener respuestas a preguntas frecuentes, visite la sección de apoyo en:
www.iLiveElectronics.com

Pour télécharger ce guide de l'utilisateur en Anglais, Espagnol ou Français, ou pour obtenir des réponses à des questions fréquemment posées, consultez la rubrique d'assistance sur:
www.iLiveElectronics.com

Contact Information

Website: www.iLiveElectronics.com

Email Support: prodinfo@dpiinc.com

Email Parts: partsinfo@dpiinc.com

Phone Support: 1-888-999-4215

Warranty

For Warranty Information and the most up-to-date version of this User's Guide, go to:
www.iLiveElectronics.com.



Specifications are subject to change without notice.
Copyright © 2016 Digital Products International (DPI, Inc.)
All other trademarks appearing herein are the property of their respective owners.



Wireless Earbuds
User's Guide for Model IAEB6

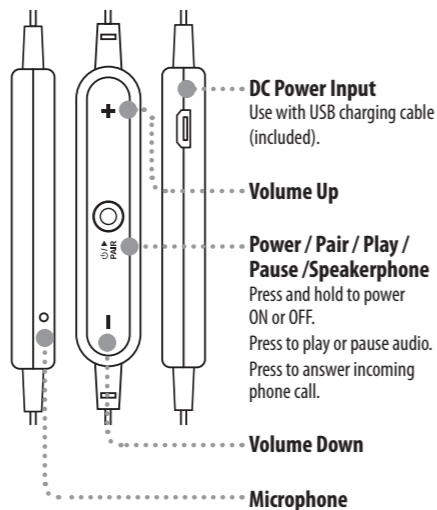
Features

- Supports Bluetooth
- Wireless range: 33 feet
- Supports profile A2DP (Advanced Audio Distribution Profile)
- Digital volume control
- Micro-USB port for battery recharge
- DC battery power: built-in rechargeable lithium ion battery
- Battery life: Playtime max 2.5 hours at 100% volume

Includes

- 3 pairs of eartips: 1 small, 1 medium, 1 large
- Micro-USB to USB charging cable

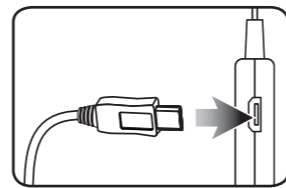
Overview & Controls



Battery Power

Initial charge time is approximately 2 hours. Charge fully before use.

1. Using a **Micro-USB to USB** cable (included), connect to the USB port of a powered on computer or USB power adaptor (not included) to charge the unit.



LED Indicators

Status	Indicators
Power On	Flashing blue light
Power Off	No light
Charging	Solid red light
Charging Complete	Solid blue light
Pairing	Flashing red and blue lights

Pairing a Bluetooth Device

If your device should become unpaired, or you find it is unable to connect normally, repeat the steps below.

1. Power on the unit by pressing and holding the **Play/Pause/Speakerphone/Pair** button for **4 seconds**. When pairing, remain within 3 feet of the unit.
2. Using the controls on your Bluetooth device, select **IAEB6** in your Bluetooth settings to pair. If your device requests a password, enter the default password **0000**.
3. Refer to the user's manual for your specific device for instructions on pairing and connecting Bluetooth devices. After initial pairing, the unit will stay paired unless unpaired manually by the user, or erased due to a reset of the device.

Playing Audio Wirelessly

1. Use the controls on the connected Bluetooth device to **select and begin playing** an audio track. Audio from the connected Bluetooth device should now be heard through the earbuds.
2. To play or pause audio, press the **Play/Pause** button, or use the controls on the connected Bluetooth device.

Using the Speakerphone

1. To accept a call, press the **Speakerphone** button, or use the controls on the connected phone.
2. To end a call, press the **Speakerphone** button, or use the controls on the connected phone.
3. To re-dial the last dialed number, press the **Speakerphone** button twice.