



PATPET

P-COLLAR 920

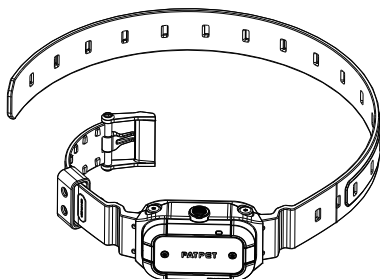
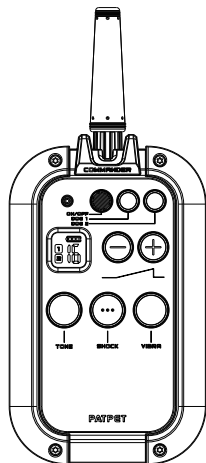
User Guide

For cooperation: Inquiry@patpet.com

For help: Support@patpet.com

Follow us for more training tricks , Facebook [@PatpetTech](https://www.facebook.com/PatpetTech)

0.3.0.02.920XXX-PT-00



**Please read the User Guide manual before
using this product**

Thanks for purchasing!

The dog training collar is designed to let dogs enjoy safer and happier lives as well as improve their ability to live in harmony with people.

WARNING Do NOT use with aggressive dogs

Aggressive dogs may cause serious injury or even death for owners or bystanders. Please consult a veterinarian or certified trainer if you are uncertain whether this training collar is appropriate for your dog's temperament.

CAUTION Leash Training Safety

Your dog's safety during on-leash training is of the utmost importance. Be certain that your leash is strong enough to prevent your dog from breaking or chewing through it. The leash should be kept at a length where your dog has some freedom to move around and play while preventing your dog from running into the road or hazardous areas. When attempting to train your dog, you should also be sure that you are capable of physically restraining your dog should the need arise.

CAUTION Risk of Damage to Dog's Skin

The training collar must fit properly and be checked periodically during use to avoid irritation or injury to your dog's skin. If the collar is too tight, is worn for too long, or is not repositioned occasionally, skin damage may occur on your dog's neck. This damage can range from redness and irritation to pressure ulcers similar to bed sores. Follow these guidelines to prevent skin injury.

CAUTION

Risk of Damage to Dog's Skin

- ⦿ Never leave the collar on for more than 12 hours per day.
- ⦿ Reposition the collar on your dog's neck every 1 to 2 hours.
- ⦿ Never connect a leash to the electronic collar as this will cause excessive pressure on the contacts.
- ⦿ If a rash or sore is found, discontinue use of the collar until the skin has healed.
- ⦿ If the condition persists beyond 48 hours, see your veterinarian.
- ⦿ This product is not a toy, please keep it away from children.
- ⦿ This product is only for use with healthy dogs.

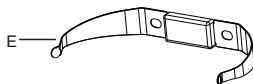
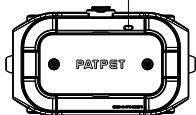
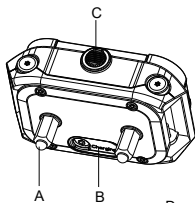
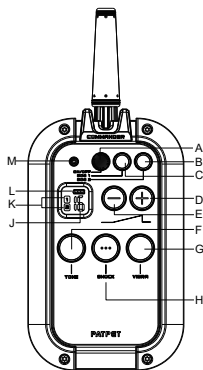




Table of Contents

Overview	06
Product Setup	07
Charge the Remote and the Receiver Collar	07
Prepare the Remote	08
Prepare the Receiver	08
Turn on the Receiver Collar	09
Turn off the Receiver Collar	09
Function Test	09
How to Use the Test Lamp	10
Pair the Remote and the Receiver Collar	11
Pair the Second Collar with the Remote	11
Collar Fitting	11
Find the Best Shock Level for Your Pet	12
Device Information	13
Others	14
Frequently Asked Questions	14
Troubleshooting Guide	15
Warranty and repair information	16

Overview



Remote

- A. ON/OFF
- B. Dog 2
- C. Dog 1
- D. Increase shock level
- E. Decrease shock level
- F. Tone button
- G. Vibration button
- H. Shock button
- I. Charge port
- J. Shock Level Display
- K. Channel Display
- L. Battery Display
- M. Indicator light

Receiver Collar

- A. Contact Points
- B. Charging Port (with cover)
- C. On/Off Button
- D. LED Indicator
- E. Contact spring sheet



Product Setup

Before you use the dog training collar, you must set up the product as outlined by the below steps:

1. Charge the remote and the receiver collar.
2. Prepare the remote and turn it on.
3. Prepare the receiver collar and turn it on.
4. Test the function of the buttons before putting it on a dog.
5. Familiarize yourself with how to use the test lamp, the shock function, and screwdrivers
6. Pair the remote and the receiver collar. You may need to pair twice if you lose the product code or have a second collar.

Charge the Remote and the Receiver Collar

1. Plug in and charge the remote and the receiver collar fully.
The initial charge will take up to 4 hours.
Subsequent charges will take 2-3 hours.
2. When fully charged, the red LED on the receiver collar will become green. The battery display on the remote will stop cycling and display full.
3. Please press back the rubber cover when the receiver collar is fully charged.

Tips:

1. Excessive charging will shorten the life of your battery. Only charge the device when the batteries are low.
2. When you're not using the collar, please turn it off to maintain battery life.

Note:

Please use an Output: DC 5V 500-800mA charger to charge the product. Do not use chargers that do not match the necessary specifications.

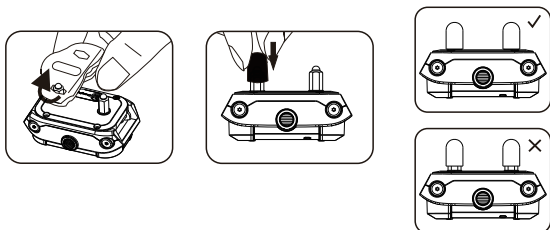
Prepare the Remote

Turning the Remote OFF and ON

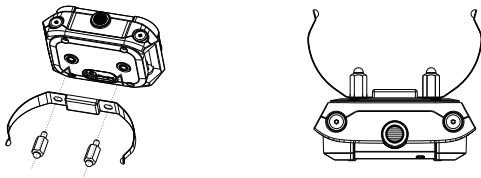
1. Press and Hold ON/OFF button to turn the remote ON.
2. The LCD will light up and show the information about the current channel and battery level. If not, please charge the remote.
3. Press and Hold ON/OFF button to turn the remote OFF.

Prepare the Receiver

Please use the test tool to install the contact points



Selecting The Contact Points and The Contact spring sheet. For the best results, select the correct contact points based on your dog's coat. You can use the contact points on their own, or use the contact points and springs at the same time, which make the contact more effective and more comfortable.





Turn on the Receiver Collar

- Press the ON/OFF button until the green LED light comes on.
- In normal mode, the green LED will flash every 4 seconds, indicating that the receiver collar is on and ready to receive a signal from the remote.

Turn off the Receiver Collar

- Press and hold the ON/OFF button until the red LED light shuts off.
- This takes approximately 3 seconds. Release the On/Off Button.

NOTE

To extend battery life, please turn the receiver collar off when it is not in use.

Function Test

We recommend you experience how the different shock levels feel on yourself before using this with a pet. Always begin at the lowest level and increase the level up to that with which you are comfortable.

1. Place one finger over both contact points on the training collar.
2. Hold your remote approximately 2 ft. from the training collar.
Press and hold the vibration button for 1 to 2 seconds.
You should feel continuous vibration.
3. Press the "-" button to decrease levels. Starting at level 1, press the shock button.
4. Increase the level until the sensation begins to feel uncomfortable.



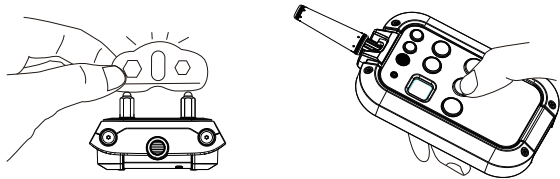
NOTE

1. Vibration/Shock will not transmit for more than 10 continuous seconds. To reactivate, release and re-press the button.
2. It is not recommended to press and hold the vibration/shock button too long, as this could cause physical or psychological pain to the dog.

How to Use the Test Lamp

Shock Function Test

1. Turn on the receiver collar.
2. Hold the test lamp's contacts against the contact points.
3. Press the shock button and the test lamp will light up. The brightness corresponds to the shock level increasing.





Pair the Remote and the Receiver Collar

1. Press the Dog 1 button of the remote .
2. Make sure the receiver collar is turned off, Press and hold the ON/OFF button on the collar for 4-5 seconds.
3. The receiver red & green LEDs will blink for about 15 seconds, which indicates that it is ready for adding and then release the button.
4. Press the remote tone and vibration buttons at the same time and hold for 2-3 seconds. The LED on the receiver collar will blink for 5 times, which indicates successful pairing.

Pair the Second Collar with the Remote

If the remote only is dog 1 mode, you need to unlock the dog 2 mode: Press "DOG 2" and "-" key at same time and hold 5 second. (Repeat this operation to lock DOG 2 again)

Press the Dog 2 button of the Remote to select Dog 2. Then follow the above pairing steps from 2-4.

Collar Fitting

Please fit the collar properly, ensuring that the contact points press firmly against the dog's skin. When properly fitted, you should be able to put a finger in between the receiver collar and dog's neck.



**Too Loose:**

The receiver collar will move around the dog's neck and the contact points maybe can't contact the dog's skin.

Too Tight:

It may cause shortness of breath for the dog and may hurt the dog's skin.

Caution:

1. Do not shave the hair on pet's neck as this may increase the risk of skin irritation.
2. The collar should not be worn for more than 12hours per day.
as it may cause skin irritation when worn too long.

Find the Best Shock Level for Your Pet

The unit comes with Up and Down buttons to control the level of shock, with Level 1 being the lowest and Level 16 being the highest. The level of shock best suited for your dog depends on your dog's temperament and threshold for being shocked. Always start at the lowest level and work your way up. You have reached the appropriate level when the dog responds to the shock with a mild reaction, such as a flick of the ear, a lick of the lips, a tensing of the neck muscles, etc. The shock level may vary depending on the training situation. When highly distracted, dog's will require a higher level of shock.

Device Information

Product Specification



Battery Type	Rechargeable, lithium polymer battery
Battery Life(typical use)	Remote: 27 days /Receiver: 11 days
Remote Waterproof Rating	IEC 60529 IPX5, waterproof
Receiver Waterproof Rating	IEC 60529 IPX7, waterproof
Operating temperature range	-20~40°C (-4~104°F)
Charging temperature range	0~40°C (32~104°F)
Remote wireless power	20dBm(100mW)
Wireless Range	900m (2950 feet)

The unit needs to be charged in any of the following situations:

1. The indicator light on the receiver collar is emitting a red color every 4 seconds or is flashing rapidly.
2. The 3 bar battery indicator on the remote's LCD shows just 1 bar.
3. The transmitting indicator light on the remote and receiver collar does not turn on.
4. The indicator light on the remote or receiver collar comes on momentarily when any of the mode buttons are pressed.



Others



Frequently Asked Questions

Is the vibration/shock safe for my pet?

While the vibration/shock is unpleasant, it is harmless to your pet. Electronic training devices require interaction and training from the owner to achieve the desired results.

How old does my pet have to be before using the remote training collar?

Your pet should be able to recognize basic obedience commands such as "Sit" or "Stay". Pets should be at least 6 months old before using the training collar.

Once my pet is trained and has been obeying my commands, will he have to continue to wear the receiver collar?

Probably not. You may need to reinforce your training with the receiver collar from time to time.

Are the remote and the receiver collar waterproof?

YES.

Will I get exactly 2950 feet of range with the remote training collar?

The range of the remote training collar will vary according to terrain, weather, and vegetation in your area, as well as possible interference from other radio devices. Refer to your "maximize the distance" for tips on maximizing your range.



How long can I continuously deliver Vibration/Shock to my pet?

The maximum amount of time you can press the Vibration/Shock Button and deliver Vibration/Shock to your pet continuously is 10 seconds. After this, there's a time-out an Vibration/Shock cannot be delivered for 5 seconds. After the 5 second time-out period, the button can be pressed and vibration/shock can be delivered again.

Troubleshooting Guide

My pet does not respond when I press a button.

- Make sure the receiver collar has been turned on.
- Make sure the remote channel(1 or 2) is correct with the receiver collar. If not, please pair the Remote and the Receiver Collar again.
- Check the battery may be low in either the remote or the receiver collar.
- Make sure the receiver collar's contact points are placed snugly against your pet's skin. Refer to "Collar Fitting" for more information
- Terrain, weather, vegetation, transmission from other radio devices, and many other factors can impact the amount of range you have with the unit.

The receiver collar unworkable.

- Make sure the receiver collar has been charged. For the initial charge, be sure to charge it for 4 hours. Subsequent charges only take 2-3 hours.



Warranty and repair information

1-Year Warranty

The original purchaser for this unit is provided with a 1-YEAR WARRANTY.

The warranty begins on the date of purchase. For the first year, coverage is provided for both parts and labor on warranty repair services. After the first year, the Limited Lifetime Warranty covers parts only, and does not cover labor fees and Accessories.

Accessories such as straps and batteries are covered for the first year only. All shipping fees incurred, the cost of accessories after the first year, and labor fees associated with out of warranty repair work are the customers responsibility.

Not Covered Under Warranty

We DO NOT offer warranty for products that have been bought second-hand or were resold. Issues of replacement and refunds on units purchased less than 30 days from an authorized dealer must be addressed to the dealer directly. If the products purchased from an authorized dealer are after 30 days from the date of purchase, please send the units to us for service and repair.

We DO NOT cover the cost of repairs and replacements due to misuse by the owner or dog, improper maintenance, and/or lost units.

The warranty is void if the unit has been altered or an unauthorized person has damaged the unit while attempting repair work.



Procedure for Repair Work

If the unit is malfunctioning, please refer to the "Troubleshooting Guide" in the manual before sending it back for service.

A copy of the sales receipt showing the purchase date may be required before warranty work is initiated. Please include a brief explanation outlining the problem, and include your name, address, city/state/zip code, daytime phone number, evening phone number, and email address.



Compliance FCC - USA

This device complies with part 15 of the FCC Rules. Operation is subject to the following two conditions:

- (1) This device may not cause harmful interference.
- (2) This device must accept any interference received, including interference that may cause undesired operation.

CAUTION: Modification or changes to this equipment not expressly approved by the manufacturer may void the user's authority to operate the equipment.

Note: This equipment has been tested and found to comply with the limits for a Class B digital device, pursuant to part 15 of the FCC Rules. These limits are designed to provide reasonable protection against harmful interference in a residential installation. This equipment generates uses and can radiate radio frequency energy and, if not installed and used in accordance with the instructions, may cause harmful interference to radio communications. However, there is no guarantee that interference will not occur in a particular installation. If this equipment does cause harmful interference to radio or television reception, which can be determined by turning the equipment off and on, the user is encouraged to try to correct the interference by one or more of the following measures:

- Reorient or relocate the receiving antenna.
- Increase the separation between the equipment and receiver.
- Connect the equipment into an outlet on a circuit different from that to which the receiver is connected.
- Consult the dealer or an experienced radio/TV technician for help






The R&D of Dog Remote Training Collar

 <https://patpet.com/>

 support@patpet.com

 1-855-888-9922



MADE IN CHINA

FCC Caution:

This device complies with part 15 of the FCC Rules. Operation is subject to the following two conditions: (1) This device may not cause harmful interference, and (2) this device must accept any interference received, including interference that may cause undesired operation.

Any Changes or modifications not expressly approved by the party responsible for compliance could void the user's authority to operate the equipment.

Note: This equipment has been tested and found to comply with the limits for a Class B digital device, pursuant to part 15 of the FCC Rules. These limits are designed to provide reasonable protection against harmful interference in a residential installation. This equipment generates uses and can radiate radio frequency energy and, if not installed and used in accordance with the instructions, may cause harmful interference to radio communications. However, there is no guarantee that interference will not occur in a particular installation. If this equipment does cause harmful interference to radio or television reception, which can be determined by turning the equipment off and on, the user is encouraged to try to correct the interference by one or more of the following measures:

- Reorient or relocate the receiving antenna.
- Increase the separation between the equipment and receiver.
- Connect the equipment into an outlet on a circuit different from that to which the receiver is connected.
- Consult the dealer or an experienced radio/TV technician for help.

The device has been evaluated to meet general RF exposure requirement. The device can be used in portable exposure condition without restriction.