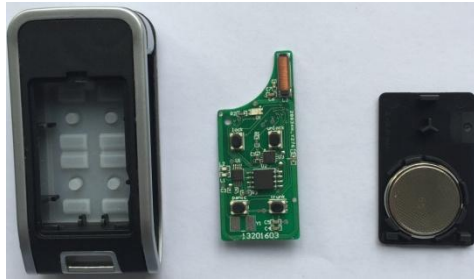


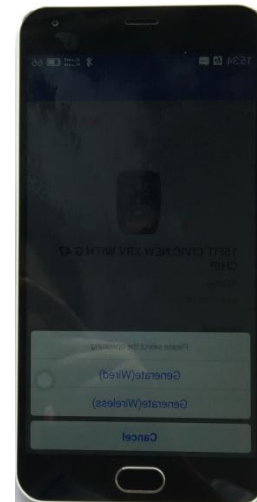
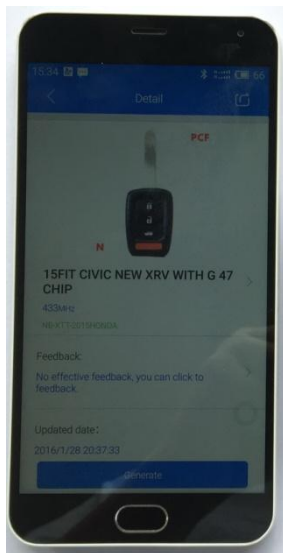
型号： T-4B-PS-8

Model: T-4B-PS-8



遥控器 PCBA 装配到外壳里面，盖好后盖。

Fit the Remote PCBA into the shell, place the back cover



点击 APP “生成” 选项，遥控器放置在生成器的感应区域，点击 “无线生成” 选项。

Click APP "Generate" option, set the remote onto the induction area of the generator, click "generate (wireless)" option.



按遥控器任意键，100%后遥控器生成。

Press any button of the remote, when “creating 100%” comes out, the remote is generated.

电气参数 Electric parameter:

工作电压 Operating voltage: 3.3V

输入电流 Input current: 30mA

发射频率 transmitting frequency: 313.85MHZ

This device complies with Part 15 of the FCC Rules. Operation is subject to the following two conditions: (1) this device may not cause harmful interference, and (2) this device must accept any interference received, including interference that may cause undesired operation.

Changes or modifications not expressly approved by the party responsible for compliance could void the user's authority to operate the equipment.

NOTE: This equipment has been tested and found to comply with the limits for a Class B digital device, pursuant to Part 15 of the FCC Rules. These limits are designed to provide reasonable protection against harmful interference in a residential installation. This equipment generates, uses instructions, may cause harmful interference to radio communications. However, there is no guarantee that interference will not occur in a particular installation. If this equipment does cause harmful interference to radio or television reception, which can be determined by turning the equipment off and on, the user is encouraged to try to correct the interference by one or more of the following measures:

- Reorient or relocate the receiving antenna.
- Increase the separation between the equipment and receiver.
- Connect the equipment into an outlet on a circuit different from that to which the receiver is connected.
- Consult the dealer or an experienced radio/TV technician for help.