



No. 1 Workshop, M-10, Middle section, Science & Technology Park,
Shenzhen, Guangdong, China 518057

Telephone: +86 (0) 755 2601 2053
Fax: +86 (0) 755 2671 0594
Email: ee.shenzhen@sgs.com

Report No.: SZEM170400270001
Page: 1 of 67

TEST REPORT

Application No.: SZEM1704002700CR
Applicant: Shenzhen DO Intelligent Technology Co., Ltd
Address of Applicant: 11th Floor, 3# Building, Guole Tech Park, Lirong Road, Dalang, Longhua, Shenzhen, Guangdong, China
Manufacturer: Shenzhen DO Intelligent Technology Co., Ltd
Address of Manufacturer: 11th Floor, 3# Building, Guole Tech Park, Lirong Road, Dalang, Longhua, Shenzhen, Guangdong, China
Factory: Shenzhen DO Intelligent Technology Co., Ltd
Address of Factory: 11th Floor, 3# Building, Guole Tech Park, Lirong Road, Dalang, Longhua, Shenzhen, Guangdong, China

Equipment Under Test (EUT):

EUT Name: Bluetooth Smart Bracelet
Model No.: ID115U LITE
FCC ID: 2AHFTID115ULITE
Standards: 47 CFR Part 15, Subpart C 15.247
Date of Receipt: 2017-04-01
Date of Test: 2017-04-10 to 2017-04-17
Date of Issue: 2017-04-20

Test Result :	Pass*
----------------------	--------------

* In the configuration tested, the EUT complied with the standards specified above.




Jack Zhang
EMC Laboratory Manager

The manufacturer should ensure that all products in series production are in conformity with the product sample detailed in this report. If the product in this report is used in any configuration other than that detailed in the report, the manufacturer must ensure the new system complies with all relevant standards. Any mention of SGS International Electrical Approvals or testing done by SGS International Electrical Approvals in connection with, distribution or use of the product described in this report must be approved by SGS International Electrical Approvals in writing.

This document is issued by the Company subject to its General Conditions of Service printed overleaf, available on request or accessible at <http://www.sgs.com/en/Terms-and-Conditions.aspx> and, for electronic format documents, subject to Terms and Conditions for Electronic Documents at <http://www.sgs.com/en/Terms-and-Conditions/Terms-e-Documents.aspx>. Attention is drawn to the limitation of liability, indemnification and jurisdiction issues defined therein. Any holder of this document is advised that information contained hereon reflects the Company's findings at the time of its intervention only and within the limits of Client's instructions, if any. The Company's sole responsibility is to its Client and this document does not exonerate parties to a transaction from exercising all their rights and obligations under the transaction documents. This document cannot be reproduced except in full, without prior written approval of the Company. Any unauthorized alteration, forgery or falsification of the content or appearance of this document is unlawful and offenders may be prosecuted to the fullest extent of the law. Unless otherwise stated the results shown in this test report refer only to the sample(s) tested and such sample(s) are retained for 30 days only.



Revision Record				
Version	Chapter	Date	Modifier	Remark
01		2017-04-20		Original

Authorized for issue by:			
Tested By			2017-04-17
	<hr/>	Peter Geng /Project Engineer	Date
Checked By			2017-04-20
	<hr/>	Eric Fu /Reviewer	Date



2 Test Summary

Radio Spectrum Technical Requirement				
Item	Standard	Method	Requirement	Result
Antenna Requirement	47 CFR Part 15, Subpart C 15.247	N/A	47 CFR Part 15, Subpart C 15.203 & 15.247(c)	Pass

Radio Spectrum Matter Part				
Item	Standard	Method	Requirement	Result
Conducted Disturbance at AC Power Line(150kHz-30MHz)	47 CFR Part 15, Subpart C 15.247	ANSI C63.10 (2013) Section 6.2	47 CFR Part 15, Subpart C 15.207	Pass
Conducted Peak Output Power	47 CFR Part 15, Subpart C 15.247	ANSI C63.10 (2013) Section 11.9.1.1	47 CFR Part 15, Subpart C 15.247(b)(3)	Pass
Minimum 6dB Bandwidth	47 CFR Part 15, Subpart C 15.247	ANSI C63.10 (2013) Section 11.8.1	47 CFR Part 15, Subpart C 15.247a(2)	Pass
Power Spectrum Density	47 CFR Part 15, Subpart C 15.247	ANSI C63.10 (2013) Section 11.10.2	47 CFR Part 15, Subpart C 15.247(e)	Pass
Conducted Spurious Emissions	47 CFR Part 15, Subpart C 15.247	ANSI C63.10 (2013) Section 11.11	47 CFR Part 15, Subpart C 15.247(d)	Pass
Radiated Spurious Emissions	47 CFR Part 15, Subpart C 15.247	ANSI C63.10 (2013) Section 6.4,6.5,6.6	47 CFR Part 15, Subpart C 15.205 & 15.209	Pass
Radiated Emissions which fall in the restricted bands	47 CFR Part 15, Subpart C 15.247	ANSI C63.10 (2013) Section 6.10.5	47 CFR Part 15, Subpart C 15.205 & 15.209	Pass
Conducted Band Edges Measurement	47 CFR Part 15, Subpart C 15.247	ANSI C63.10 (2013) Section 11.13.3.2	47 CFR Part 15, Subpart C 15.247(d)	Pass



3 Contents

	Page
1 COVER PAGE	1
2 TEST SUMMARY	3
3 CONTENTS	4
4 GENERAL INFORMATION.....	6
4.1 DETAILS OF E.U.T.	6
4.2 DESCRIPTION OF SUPPORT UNITS.....	6
4.3 MEASUREMENT UNCERTAINTY.....	7
4.4 TEST LOCATION	8
4.5 TEST FACILITY	8
4.6 DEVIATION FROM STANDARDS.....	8
4.7 ABNORMALITIES FROM STANDARD CONDITIONS	8
5 EQUIPMENT LIST.....	9
6 RADIO SPECTRUM TECHNICAL REQUIREMENT.....	12
6.1 ANTENNA REQUIREMENT	12
6.1.1 Test Requirement:.....	12
6.1.2 Conclusion.....	12
7 RADIO SPECTRUM MATTER TEST RESULTS	13
7.1 CONDUCTED DISTURBANCE AT AC POWER LINE(150kHz-30MHz).....	13
7.1.1 E.U.T. Operation.....	14
7.1.2 Test Setup Diagram.....	14
7.1.3 Measurement Data.....	14
7.2 CONDUCTED PEAK OUTPUT POWER.....	17
7.2.1 E.U.T. Operation.....	18
7.2.2 Test Setup Diagram.....	18
7.2.3 Measurement Data.....	18
7.3 MINIMUM 6dB BANDWIDTH	19
7.3.1 E.U.T. Operation.....	19
7.3.2 Test Setup Diagram.....	19
7.3.3 Measurement Data.....	19
7.4 POWER SPECTRUM DENSITY	20
7.4.1 E.U.T. Operation.....	20
7.4.2 Test Setup Diagram.....	20
7.4.3 Measurement Data.....	20
7.5 CONDUCTED SPURIOUS EMISSIONS.....	21
7.5.1 E.U.T. Operation.....	21
7.5.2 Test Setup Diagram.....	21
7.5.3 Measurement Data.....	21
7.6 RADIATED SPURIOUS EMISSIONS	22
7.6.1 E.U.T. Operation.....	23
7.6.2 Test Setup Diagram.....	23
7.6.3 Measurement Data.....	24
7.7 RADIATED EMISSIONS WHICH FALL IN THE RESTRICTED BANDS.....	31
7.7.1 E.U.T. Operation.....	31
7.7.2 Test Setup Diagram.....	31
7.7.3 Measurement Data.....	32



7.8	CONDUCTED BAND EDGES MEASUREMENT.....	37
7.8.1	<i>E.U.T. Operation</i>	37
7.8.2	<i>Test Setup Diagram</i>	37
7.8.3	<i>Measurement Data</i>	37
8	PHOTOGRAPHS	38
8.1	CONDUCTED DISTURBANCE AT AC POWER LINE(150KHZ-30MHZ) TEST SETUP.....	38
8.2	RADIATED SPURIOUS EMISSIONS TEST SETUP.....	39
8.3	EUT CONSTRUCTIONAL DETAILS	40
9	APPENDIX	46
9.1	APPENDIX 15.247.....	46-67



4 General Information

4.1 Details of E.U.T.

Power supply:	DC 3.7V rechargeable battery which charged by USB port
Test voltage:	AC 120V/60Hz
Bluetooth version:	V4.0 BLE
Modulation type:	GFSK
Operation frequency:	2402-2480MHz
Channel numbers:	40
Antenna type:	PCB antenna
Antenna gain:	0dBi

4.2 Description of Support Units

The EUT has been tested as an independent unit.

4.3 Measurement Uncertainty

No.	Item	Measurement Uncertainty
1	Radio Frequency	7.25 x 10 ⁻⁸
2	Duty cycle	0.37%
3	Occupied Bandwidth	3%
4	RF conducted power	0.75dB
5	RF power density	2.84dB
6	Conducted Spurious emissions	0.75dB
7	Radiated Spurious emission test	4.5dB (30MHz-1GHz)
		4.8dB (1GHz-18GHz)
8	Temperature test	1 °C
9	Humidity test	3%
10	Supply voltages	1.5%
11	Time	3%



4.4 Test Location

All tests were performed at:

SGS-CSTC Standards Technical Services Co., Ltd., Shenzhen Branch

No. 1 Workshop, M-10, Middle Section, Science & Technology Park, Shenzhen, Guangdong, China.
518057.

Tel: +86 755 2601 2053 Fax: +86 755 2671 0594

No tests were sub-contracted.

4.5 Test Facility

The test facility is recognized, certified, or accredited by the following organizations:

- **CNAS (No. CNAS L2929)**

CNAS has accredited SGS-CSTC Standards Technical Services Co., Ltd. Shenzhen Branch EMC Lab to ISO/IEC 17025:2005 General Requirements for the Competence of Testing and Calibration Laboratories (CNAS-CL01 Accreditation Criteria for the Competence of Testing and Calibration Laboratories) for the competence in the field of testing.

- **A2LA (Certificate No. 3816.01)**

SGS-CSTC Standards Technical Services Co., Ltd., Shenzhen EMC Laboratory is accredited by the American Association for Laboratory Accreditation(A2LA). Certificate No. 3816.01.

- **VCCI**

The 10m Semi-anechoic chamber and Shielded Room of SGS-CSTC Standards Technical Services Co., Ltd. have been registered in accordance with the Regulations for Voluntary Control Measures with Registration No.: G-823, R-4188, T-1153 and C-2383 respectively.

- **FCC – Registration No.: 556682**

SGS-CSTC Standards Technical Services Co., Ltd., Shenzhen EMC Laboratory has been registered and fully described in a report filed with the (FCC) Federal Communications Commission. The acceptance letter from the FCC is maintained in our files. Registration No.: 556682.

- **Industry Canada (IC)**

Two 3m Semi-anechoic chambers and the 10m Semi-anechoic chamber of SGS-CSTC Standards Technical Services Co., Ltd. Shenzhen Branch EMC Lab have been registered by Certification and Engineering Bureau of Industry Canada for radio equipment testing with Registration No.: 4620C-1, 4620C-2, 4620C-3.

4.6 Deviation from Standards

None

4.7 Abnormalities from Standard Conditions

None



5 Equipment List

RE in Chamber					
Test Equipment	Manufacturer	Model No.	Inventory No.	Cal. Date (yyyy-mm-dd)	Cal. Due date (yyyy-mm-dd)
3m Semi-Anechoic Chamber	AUDIX	N/A	SEM001-02	2016-05-13	2017-05-13
EXA Spectrum Analyzer	Agilent Technologies Inc	N9010A	SEM004-09	2016-07-19	2017-07-19
BiConiLog Antenna (26-3000MHz)	ETS-Lindgren	3142C	SEM003-02	2014-11-15	2017-11-15
Amplifier (0.1-1300MHz)	HP	8447D	SEM005-02	2016-10-09	2017-10-09
Horn Antenna (1-18GHz)	Rohde & Schwarz	HF907	SEM003-07	2015-06-14	2018-06-14
Horn Antenna (18-26GHz)	ETS-Lindgren	3160	SEM003-12	2014-11-24	2017-11-24
Horn Antenna(26GHz- 40GHz)	A.H.Systems, inc.	SAS-573	SEM003-13	2015-02-12	2018-02-12
Low Noise Amplifier	Black Diamond Series	BDLNA-0118-352810	SEM005-05	2016-10-09	2017-10-09
Band filter	Amindeon	Asi 3314	SEM023-01	N/A	N/A

RE in Chamber					
Test Equipment	Manufacturer	Model No.	Inventory No.	Cal. Date (yyyy-mm-dd)	Cal. Due date (yyyy-mm-dd)
10m Semi-Anechoic Chamber	SAEMC	FSAC1018	SEM001-03	2016-05-13	2017-05-13
EMI Test Receiver (9k-7GHz)	Rohde & Schwarz	ESR	SEM004-03	2016-04-25	2017-04-25
Trilog-Broadband Antenna(30M-1GHz)	Schwarzbeck	VULB9168	SEM003-18	2016-06-29	2019-06-29
Pre-amplifier	Sonoma Instrument Co	310N	SEM005-03	2016-07-06	2017-07-06
Loop Antenna	ETS-Lindgren	6502	SEM003-08	2015-08-14	2018-08-14



Conducted Disturbance at AC Power Line(150kHz-30MHz)					
Equipment	Manufacturer	Model No	Inventory No	Cal Date	Cal Due Date
Shielding Room	ZhongYu Electron	GB-88	SEM001-06	2016-05-13	2017-05-13
LISN	Rohde & Schwarz	ENV216	SEM007-01	2016-10-09	2017-10-09
LISN	ETS-LINDGREN	3816/2	SEM007-02	2016-04-25	2017-04-25
8 Line ISN	Fischer Custom Communications Inc.	FCC-TLISN-T8-02	EMC0120	2016-09-28	2017-09-28
4 Line ISN	Fischer Custom Communications Inc.	FCC-TLISN-T4-02	EMC0121	2016-09-28	2017-09-28
2 Line ISN	Fischer Custom	FCC-TLISN-T2-02	EMC0122	2016-09-28	2017-09-28

Conducted Peak Output Power					
Equipment	Manufacturer	Model No	Inventory No	Cal Date	Cal Due Date
DC Power Supply	ZhaoXin	RXN-305D	SEM011-02	2016-10-09	2017-10-09
Spectrum Analyzer	Rohde & Schwarz	FSP	SEM004-06	2016-10-09	2017-10-09
Power Meter	Rohde & Schwarz	NRVS	SEM014-02	2016-10-09	2017-10-09

Minimum 6dB Bandwidth					
Equipment	Manufacturer	Model No	Inventory No	Cal Date	Cal Due Date
DC Power Supply	ZhaoXin	RXN-305D	SEM011-02	2016-10-09	2017-10-09
Spectrum Analyzer	Rohde & Schwarz	FSP	SEM004-06	2016-10-09	2017-10-09
Power Meter	Rohde & Schwarz	NRVS	SEM014-02	2016-10-09	2017-10-09

Power Spectrum Density					
Equipment	Manufacturer	Model No	Inventory No	Cal Date	Cal Due Date
DC Power Supply	ZhaoXin	RXN-305D	SEM011-02	2016-10-09	2017-10-09
Spectrum Analyzer	Rohde & Schwarz	FSP	SEM004-06	2016-10-09	2017-10-09
Power Meter	Rohde & Schwarz	NRVS	SEM014-02	2016-10-09	2017-10-09



Conducted Spurious Emissions					
Equipment	Manufacturer	Model No	Inventory No	Cal Date	Cal Due Date
DC Power Supply	ZhaoXin	RXN-305D	SEM011-02	2016-10-09	2017-10-09
Spectrum Analyzer	Rohde & Schwarz	FSP	SEM004-06	2016-10-09	2017-10-09
Power Meter	Rohde & Schwarz	NRVS	SEM014-02	2016-10-09	2017-10-09

Conducted Band Edges Measurement					
Equipment	Manufacturer	Model No	Inventory No	Cal Date	Cal Due Date
DC Power Supply	ZhaoXin	RXN-305D	SEM011-02	2016-10-09	2017-10-09
Spectrum Analyzer	Rohde & Schwarz	FSP	SEM004-06	2016-10-09	2017-10-09
Power Meter	Rohde & Schwarz	NRVS	SEM014-02	2016-10-09	2017-10-09

General used equipment					
Equipment	Manufacturer	Model No	Inventory No	Cal Date	Cal Due Date
Humidity/ Temperature Indicator	Shanghai Meteorological Industry Factory	ZJ1-2B	SEM002-03	2016-10-12	2017-10-12
Humidity/ Temperature Indicator	Shanghai Meteorological Industry Factory	ZJ1-2B	SEM002-04	2016-10-12	2017-10-12
Humidity/ Temperature Indicator	Mingle	N/A	SEM002-08	2016-10-12	2017-10-12
Barometer	Changchun Meteorological Industry Factory	DYM3	SEM002-01	2016-05-18	2017-05-18

6 Radio Spectrum Technical Requirement

6.1 Antenna Requirement

6.1.1 Test Requirement:

47 CFR Part 15, Subpart C 15.247

6.1.2 Conclusion

Standard Requirement:

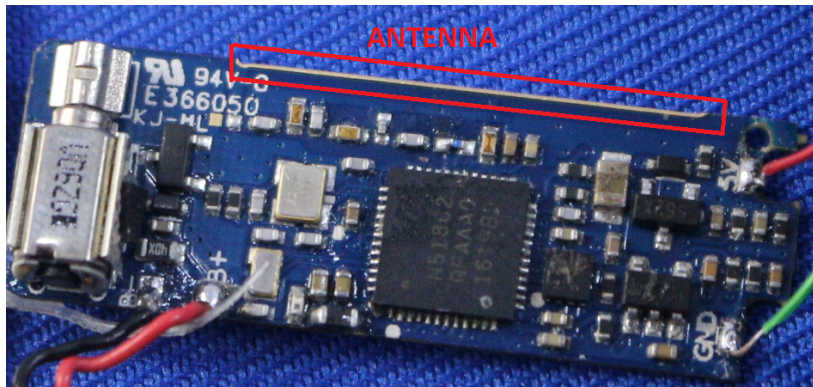
An intentional radiator shall be designed to ensure that no antenna other than that furnished by the responsible party shall be used with the device. The use of a permanently attached antenna or of an antenna that uses a unique coupling to the intentional radiator, the manufacturer may design the unit so that a broken antenna can be replaced by the user, but the use of a standard antenna jack or electrical connector is prohibited.

15.247(b) (4) requirement:

The conducted output power limit specified in paragraph (b) of this section is based on the use of antennas with directional gains that do not exceed 6 dBi. Except as shown in paragraph (c) of this section, if transmitting antennas of directional gain greater than 6 dBi are used, the conducted output power from the intentional radiator shall be reduced below the stated values in paragraphs (b)(1), (b)(2), and (b)(3) of this section, as appropriate, by the amount in dB that the directional gain of the antenna exceeds 6 dBi.

EUT Antenna:

The antenna is integrated on the main PCB and no consideration of replacement. The best case gain of the antenna is 0dBi.





7 Radio Spectrum Matter Test Results

7.1 Conducted Disturbance at AC Power Line(150kHz-30MHz)

Test Requirement 47 CFR Part 15, Subpart C 15.207
Test Method: ANSI C63.10 (2013) Section 6.2
Limit:

Frequency of emission(MHz)	Conducted limit(dB μ V)	
	Quasi-peak	Average
0.15-0.5	66 to 56*	56 to 46*
0.5-5	56	46
5-30	60	50

*Decreases with the logarithm of the frequency.

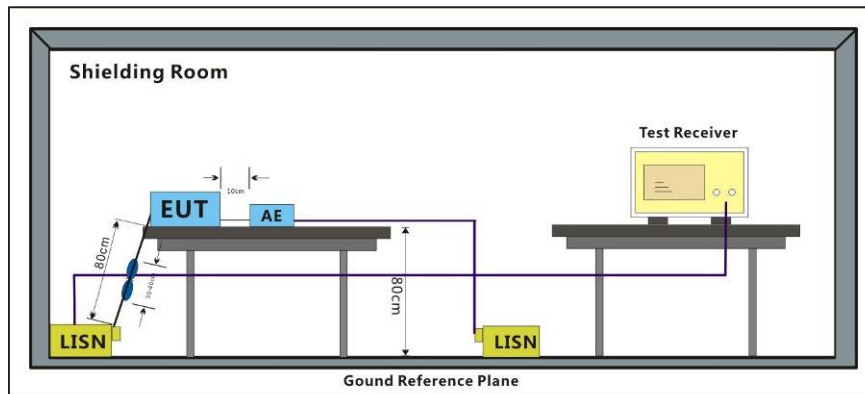
7.1.1 E.U.T. Operation

Operating Environment:

Temperature: 25.0 °C Humidity: 55 % RH Atmospheric Pressure: 1020 mbar

Test mode: a:TX_Keep the EUT in transmitting mode

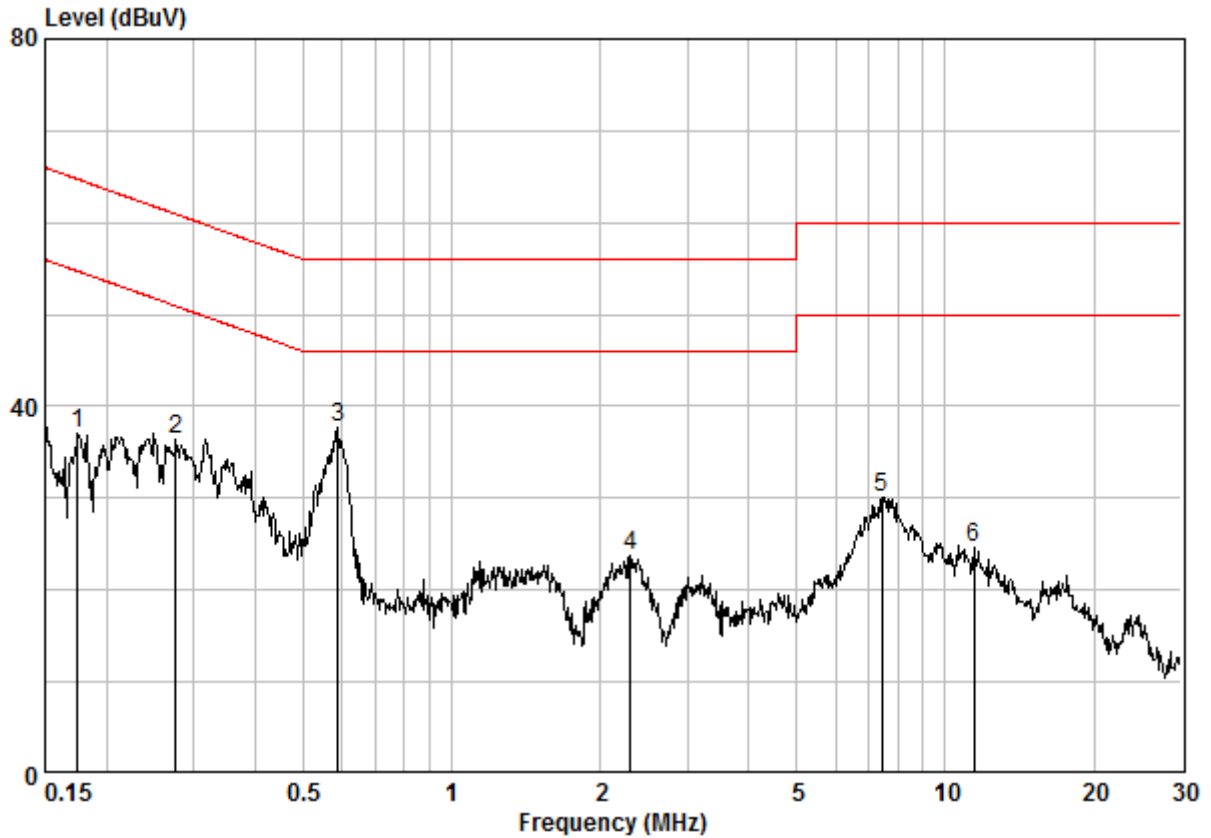
7.1.2 Test Setup Diagram



7.1.3 Measurement Data

- 1) The mains terminal disturbance voltage test was conducted in a shielded room.
- 2) The EUT was connected to AC power source through a LISN 1 (Line Impedance Stabilization Network) which provides a 50ohm/50μH + 5ohm linear impedance. The power cables of all other units of the EUT were connected to a second LISN 2, which was bonded to the ground reference plane in the same way as the LISN 1 for the unit being measured. A multiple socket outlet strip was used to connect multiple power cables to a single LISN provided the rating of the LISN was not exceeded.
- 3) The tabletop EUT was placed upon a non-metallic table 0.8m above the ground reference plane. And for floor-standing arrangement, the EUT was placed on the horizontal ground reference plane,
- 4) The test was performed with a vertical ground reference plane. The rear of the EUT shall be 0.4 m from the vertical ground reference plane. The vertical ground reference plane was bonded to the horizontal ground reference plane. The LISN 1 was placed 0.8 m from the boundary of the unit under test and bonded to a ground reference plane for LISNs mounted on top of the ground reference plane. This distance was between the closest points of the LISN 1 and the EUT. All other units of the EUT and associated equipment was at least 0.8 m from the LISN 2.
- 5) In order to find the maximum emission, the relative positions of equipment and all of the interface cables must be changed according to ANSI C63.10 on conducted measurement.

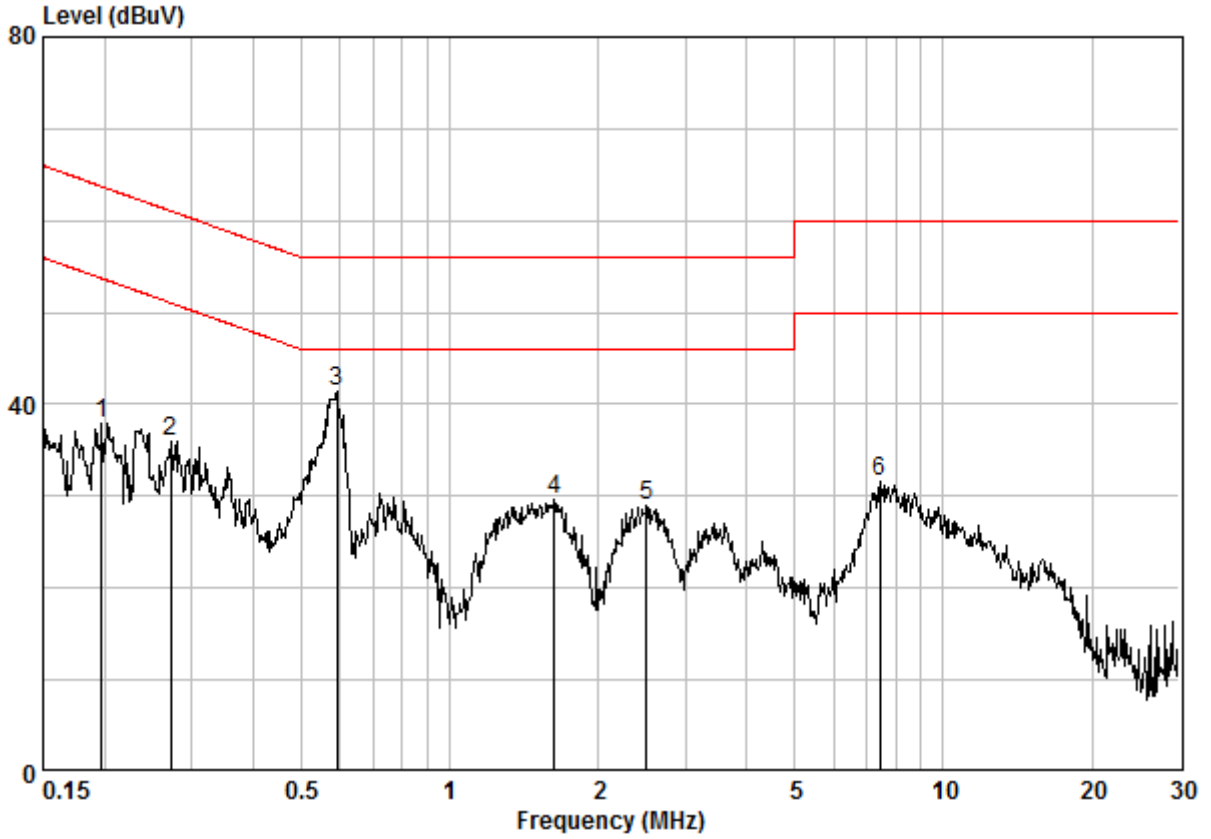
Mode:a; Line:Live Line



Site : Shielding Room
 Condition : CE LINE
 Job No. : 02700CR
 Test Mode : a

	Freq	Cable Loss	LISN Factor	Read Level	Limit Level	Limit Line	Over Limit	Remark
	MHz	dB	dB	dBuV	dBuV	dBuV	dB	
1	0.17491	0.02	9.64	27.43	37.09	54.72	-17.63	Peak
2	0.27587	0.02	9.64	26.72	36.38	50.94	-14.56	Peak
3	0.58851	0.02	9.65	28.14	37.81	46.00	-8.19	Peak
4	2.297	0.03	9.68	13.97	23.68	46.00	-22.32	Peak
5	7.446	0.09	9.80	20.26	30.15	50.00	-19.85	Peak
6	11.438	0.15	9.89	14.53	24.56	50.00	-25.44	Peak

Mode:a; Line:Neutral Line



Site : Shielding Room
 Condition : CE NEUTRAL
 Job No. : 02700CR
 Test Mode : a

	Freq	Cable Loss	LISN Factor	Read Level	Limit Level	Over Limit	Remark
	MHz	dB	dB	dBuV	dBuV	dB	
1	0.19758	0.02	9.63	28.27	37.92	53.71	-15.79 Peak
2	0.27152	0.02	9.63	26.32	35.97	51.07	-15.10 Peak
3 @	0.59164	0.02	9.63	31.85	41.50	46.00	-4.50 Peak
4	1.628	0.03	9.65	19.85	29.54	46.00	-16.46 Peak
5	2.500	0.03	9.66	19.31	29.00	46.00	-17.00 Peak
6	7.446	0.09	9.78	21.64	31.50	50.00	-18.50 Peak



7.2 Conducted Peak Output Power

Test Requirement 47 CFR Part 15, Subpart C 15.247(b)(3)
Test Method: ANSI C63.10 (2013) Section 11.9.1.1
Limit:

Frequency range(MHz)	Output power of the intentional radiator(watt)
902-928	1 for ≥ 50 hopping channels
	0.25 for $25 \leq$ hopping channels < 50
	1 for digital modulation
2400-2483.5	1 for ≥ 75 non-overlapping hopping channels
	0.125 for all other frequency hopping systems
	1 for digital modulation
5725-5850	1 for frequency hopping systems and digital modulation

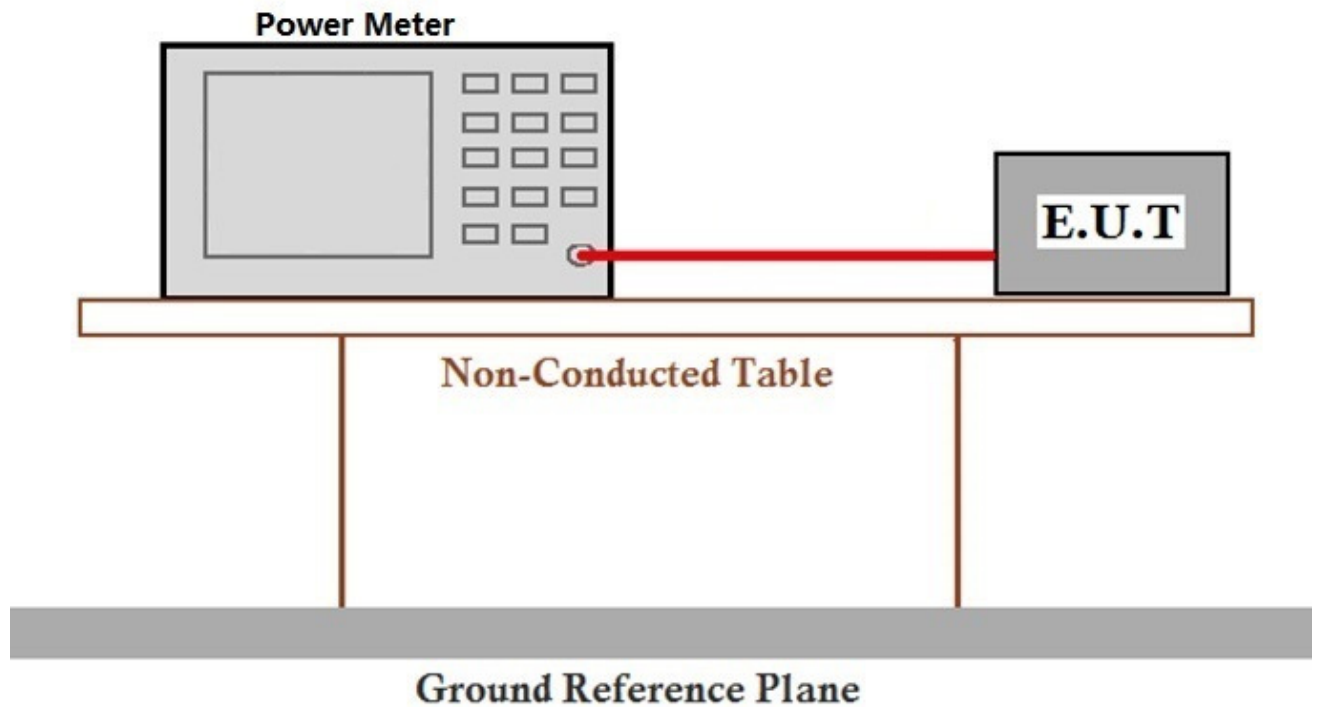
7.2.1 E.U.T. Operation

Operating Environment:

Temperature: 23.0 °C Humidity: 56 % RH Atmospheric Pressure: 1020 mbar

Test mode: a:TX_Keep the EUT in transmitting mode

7.2.2 Test Setup Diagram



7.2.3 Measurement Data

The detailed test data see: Appendix 15.247

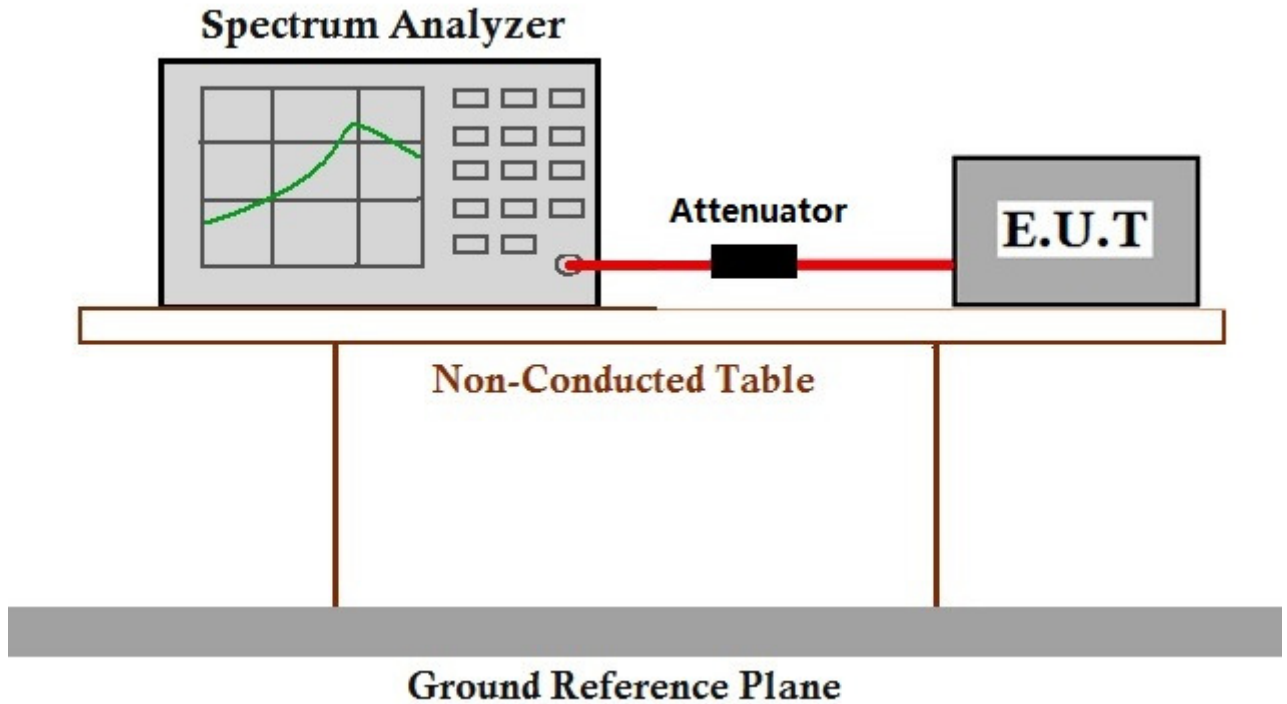
7.3 Minimum 6dB Bandwidth

Test Requirement 47 CFR Part 15, Subpart C 15.247a(2)
 Test Method: ANSI C63.10 (2013) Section 11.8.1
 Limit: ≥ 500 kHz

7.3.1 E.U.T. Operation

Operating Environment:
 Temperature: 23.0 °C Humidity: 56 % RH Atmospheric Pressure: 1020 mbar
 Test mode: a:TX_Keep the EUT in transmitting mode

7.3.2 Test Setup Diagram



7.3.3 Measurement Data

The detailed test data see: Appendix 15.247

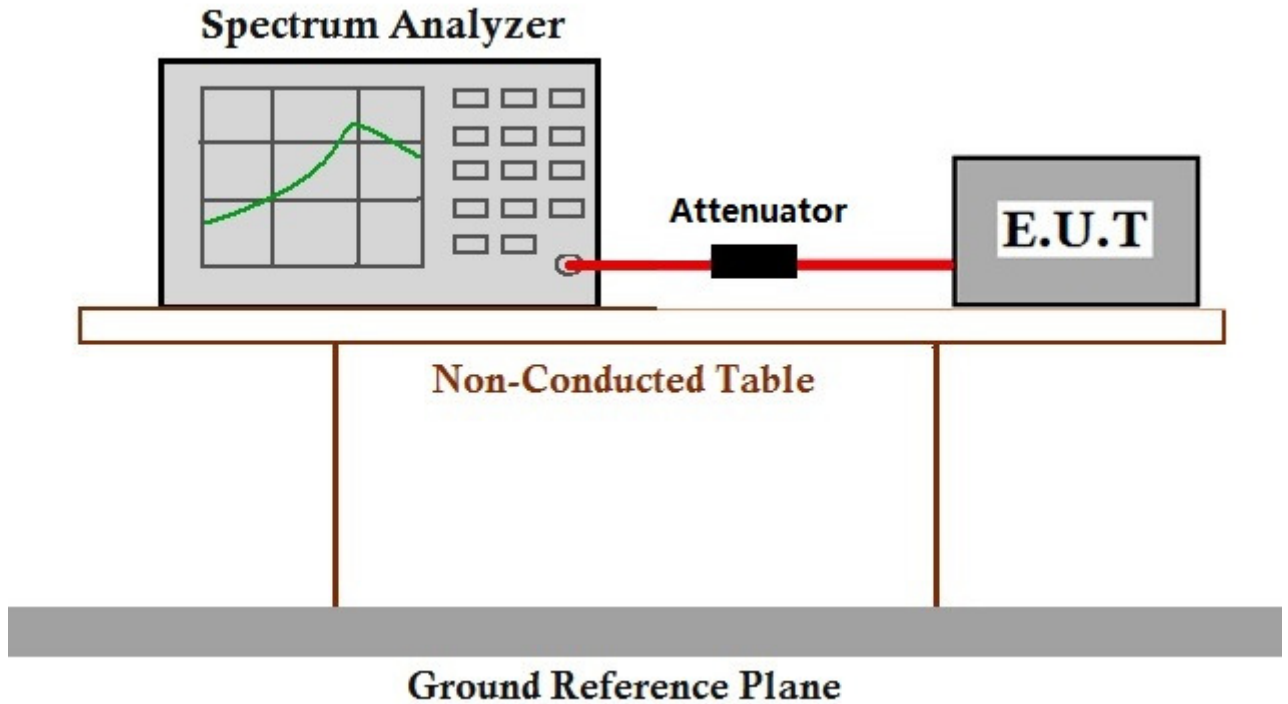
7.4 Power Spectrum Density

Test Requirement: 47 CFR Part 15, Subpart C 15.247(e)
 Test Method: ANSI C63.10 (2013) Section 11.10.2
 Limit: $\leq 8\text{dBm}$ in any 3 kHz band during any time interval of continuous transmission

7.4.1 E.U.T. Operation

Operating Environment:
 Temperature: 23.0 °C Humidity: 56 % RH Atmospheric Pressure: 1020 mbar
 Test mode: a:TX_Keep the EUT in transmitting mode

7.4.2 Test Setup Diagram



7.4.3 Measurement Data

The detailed test data see: Appendix 15.247

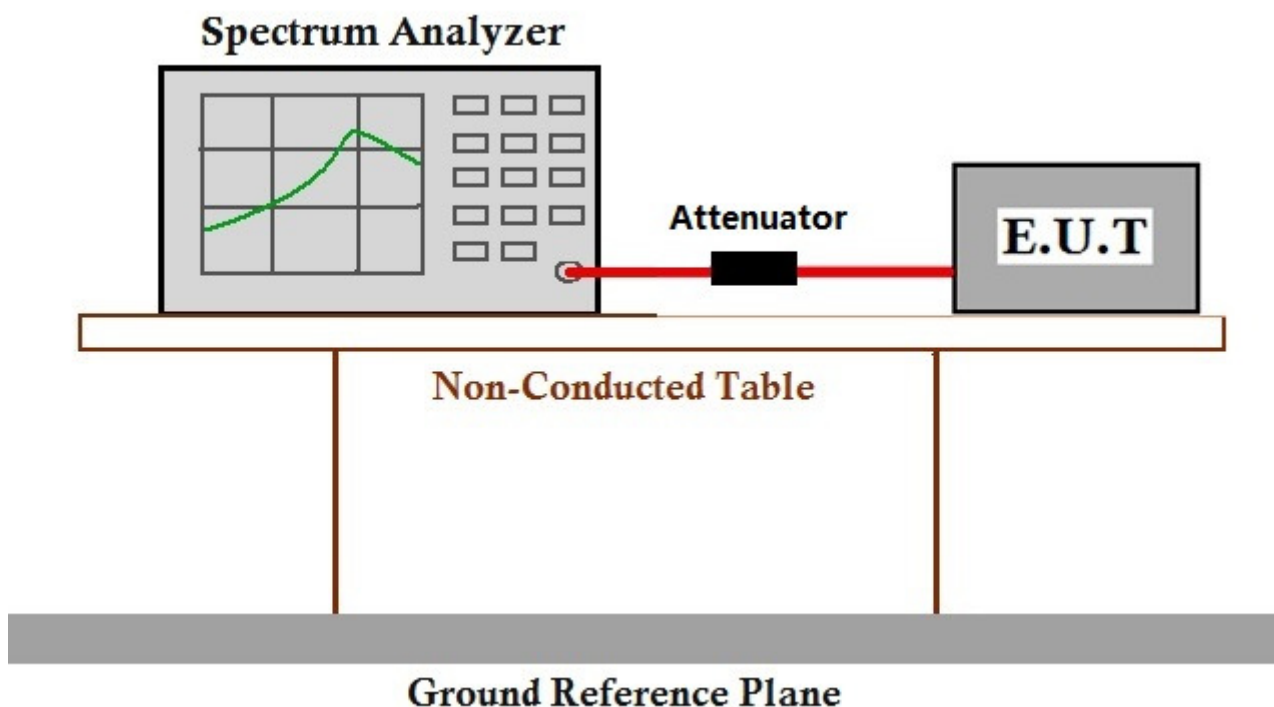
7.5 Conducted Spurious Emissions

Test Requirement: 47 CFR Part 15, Subpart C 15.247(d)
 Test Method: ANSI C63.10 (2013) Section 11.11
 Limit: In any 100 kHz bandwidth outside the frequency band in which the spread spectrum intentional radiator is operating, the radio frequency power that is produced by the intentional radiator shall be at least 20 dB below that in the 100 kHz bandwidth within the band that contains the highest level of the desired power, based on either an RF conducted or a radiated measurement.

7.5.1 E.U.T. Operation

Operating Environment:
 Temperature: 23.0 °C Humidity: 56 % RH Atmospheric Pressure: 1020 mbar
 Test mode: a:TX_Keep the EUT in transmitting mode

7.5.2 Test Setup Diagram



7.5.3 Measurement Data

The detailed test data see: Appendix 15.247



7.6 Radiated Spurious Emissions

Test Requirement 47 CFR Part 15, Subpart C 15.205 & 15.209
Test Method: ANSI C63.10 (2013) Section 6.4,6.5,6.6
Measurement Distance: 10m
Limit:

Frequency(MHz)	Field strength(microvolts/meter)	Measurement distance(meters)
0.009-0.490	2400/F(kHz)	300
0.490-1.705	24000/F(kHz)	30
1.705-30.0	30	30
30-88	100	3
88-216	150	3
216-960	200	3
Above 960	500	3

Remark: The emission limits shown in the above table are based on measurements employing a CISPR quasi-peak detector except for the frequency bands 9-90kHz, 110-490kHz and above 1000 MHz. Radiated emission limits in these three bands are based on measurements employing an average detector, the peak field strength of any emission shall not exceed the maximum permitted average limits specified above by more than 20 dB under any condition of modulation.

7.6.1 E.U.T. Operation

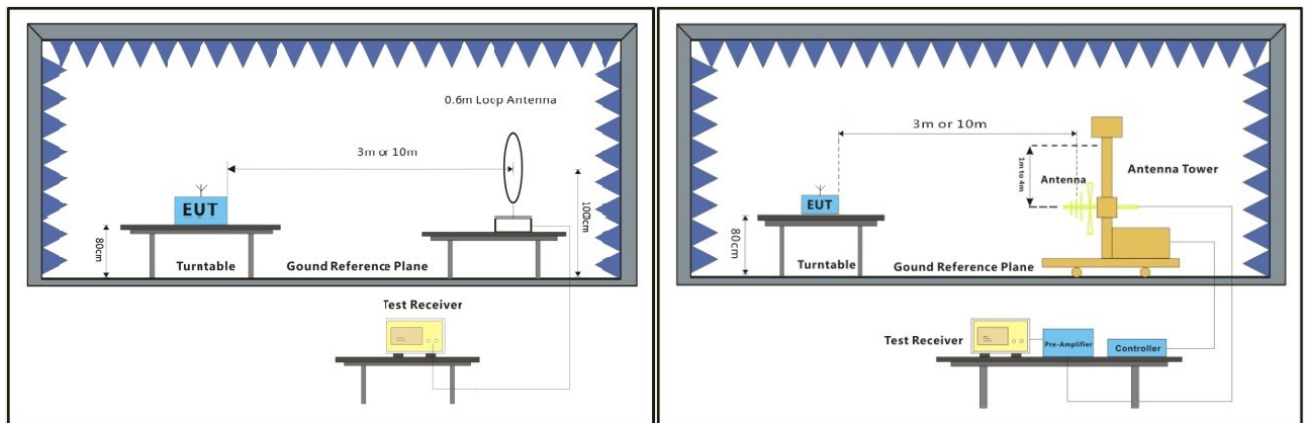
Operating Environment:

Temperature: 25.0 °C Humidity: 55 % RH Atmospheric Pressure: 1020 mbar

Test mode: a:TX+charging mode
 b: TX_Keep the EUT in transmitting mode

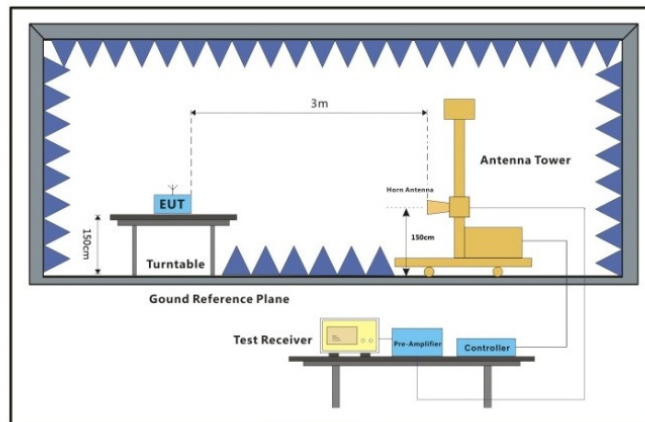
Final test: a:TX+charging mode

7.6.2 Test Setup Diagram



Below 30MHz

30MHz-1GHz



Above 1GHz

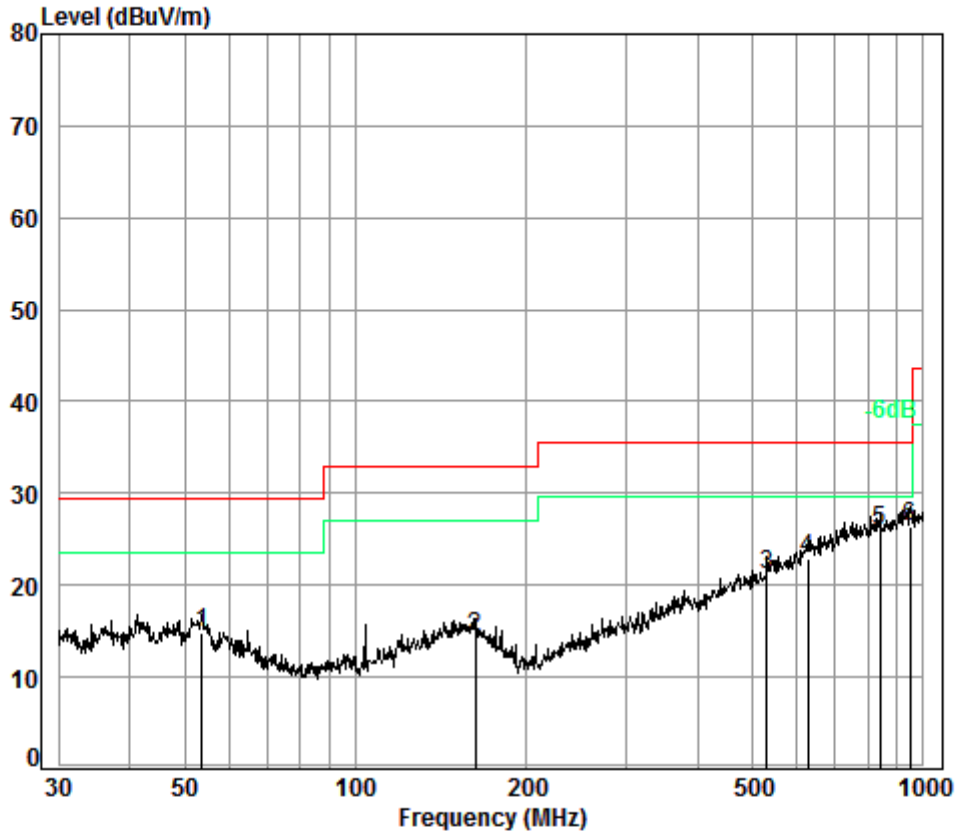


7.6.3 Measurement Data

- a. For below 1GHz, the EUT was placed on the top of a rotating table 0.8 meters above the ground at a 3 or 10 meter semi-anechoic chamber. The table was rotated 360 degrees to determine the position of the highest radiation.
- b. For above 1GHz, the EUT was placed on the top of a rotating table 1.5 meters above the ground at a 3 meter fully-anechoic chamber. The table was rotated 360 degrees to determine the position of the highest radiation.
- c. The EUT was set 3 or 10 meters away from the interference-receiving antenna, which was mounted on the top of a variable-height antenna tower.
- d. The antenna height is varied from one meter to four meters above the ground to determine the maximum value of the field strength. Both horizontal and vertical polarizations of the antenna are set to make the measurement.
- e. For each suspected emission, the EUT was arranged to its worst case and then the antenna was tuned to heights from 1 meter to 4 meters (for the test frequency of below 30MHz, the antenna was tuned to heights 1 meter) and the rotatable table was turned from 0 degrees to 360 degrees to find the maximum reading.
- f. The test-receiver system was set to Peak Detect Function and Specified Bandwidth with Maximum Hold Mode.
- g. If the emission level of the EUT in peak mode was 10dB lower than the limit specified, then testing could be stopped and the peak values of the EUT would be reported. Otherwise the emissions that did not have 10dB margin would be re-tested one by one using peak, quasi-peak or average method as specified and then reported in a data sheet.
- h. Test the EUT in the lowest channel, the middle channel, the Highest channel.
- i. The radiation measurements are performed in X, Y, Z axis positioning for Transmitting mode, and found the X axis positioning which it is the worst case.
- j. Repeat above procedures until all frequencies measured was complete.

Below 1GHz

30MHz~1GHz (QP)		
Test mode:	a	Vertical

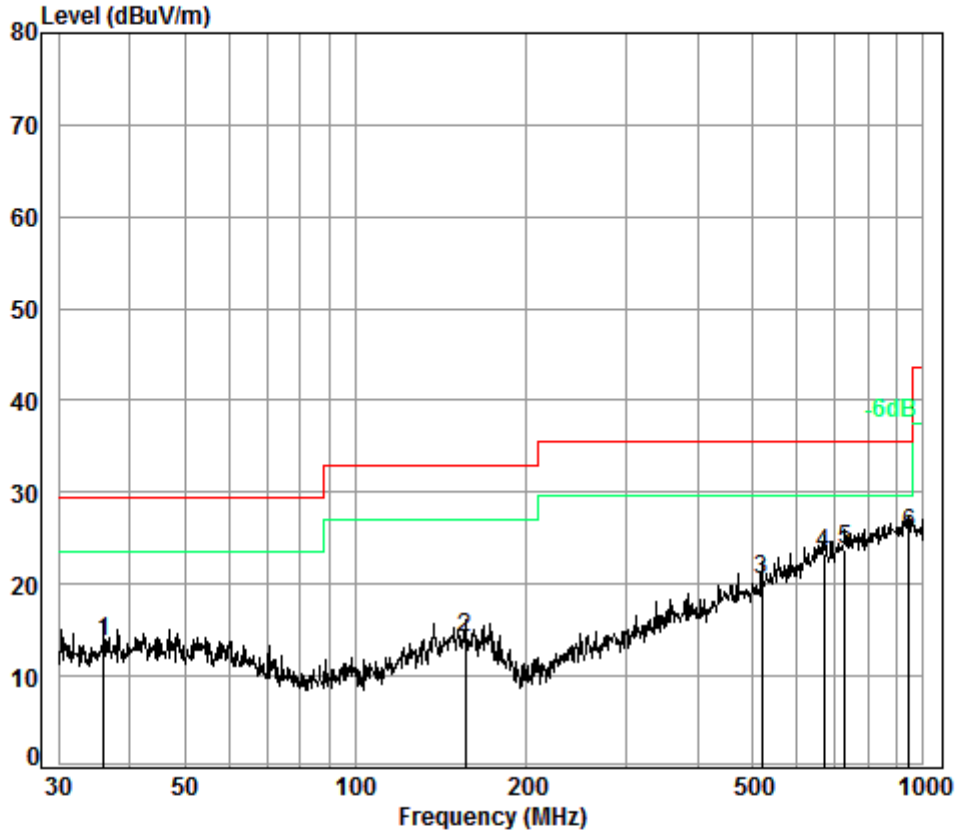


Condition: 10m VERTICAL
Job No. : 02700CR
Test Mode: a

	Freq	Cable Loss	Ant Factor	Preamp Factor	Read Level	Limit Level	Over Line	Over Limit
	MHz	dB	dB/m	dB	dBuV	dBuV/m	dBuV/m	dB
1	53.69	6.97	12.48	32.98	28.25	14.72	29.50	-14.78
2	162.61	7.50	13.13	32.73	26.46	14.36	33.00	-18.64
3	530.10	8.73	17.37	32.60	27.67	21.17	35.60	-14.43
4	625.08	8.96	19.22	32.60	27.27	22.85	35.60	-12.75
5	839.18	9.30	21.52	32.56	27.62	25.88	35.60	-9.72
6 pp	948.76	9.57	22.72	32.50	26.67	26.46	35.60	-9.14



Test mode:	a	Horizontal
------------	---	------------



Condition: 10m HORIZONTAL
Job No. : 02700CR
Test Mode: a

	Freq	Cable Loss	Ant Factor	Preamp Factor	Read Level	Limit Level	Limit Line	Over Limit
	MHz	dB	dB/m	dB	dBuV	dBuV/m	dBuV/m	dB
1	36.00	6.72	12.78	32.98	27.31	13.83	29.50	-15.67
2	155.91	7.48	13.40	32.74	26.02	14.16	33.00	-18.84
3	519.06	8.70	17.16	32.60	27.20	20.46	35.60	-15.14
4	668.14	9.07	19.76	32.60	27.09	23.32	35.60	-12.28
5	726.81	9.20	20.48	32.60	26.77	23.85	35.60	-11.75
6 pp	945.44	9.56	22.70	32.50	25.76	25.52	35.60	-10.08



Below 1GHz

The test was performed at a 10m test site. According to below formulate and the test data at 10m test distance,

$$L_3 / L_{10} = D_{10} / D_3$$

Note:

L₃: Level @ 3m distance. Unit: uV/m;

L₁₀: Level @ 10m distance. Unit: uV/m;

D₃: 3m distance. Unit: m

D₁₀: 10m distance. Unit: m

The level at 3m test distance is below:

Frequency (MHz)	Level @ 10m (dBuV/m)	Level @ 10m (uV/m)	Level @ 3m (uV/m)	Level @ 3m (dBuV/m)	Limit @ 3m (dBuV/m)	Margin (dB)	Ant. Polarization
53.69	14.72	5.45	18.15	25.18	40.00	-14.82	V
162.61	14.36	5.22	17.41	24.82	43.50	-18.68	V
530.10	21.17	11.44	38.14	31.63	46.00	-14.37	V
625.08	22.85	13.88	46.28	33.31	46.00	-12.69	V
839.18	25.88	19.68	65.60	36.34	46.00	-9.66	V
948.76	26.46	21.04	70.13	36.92	46.00	-9.08	V
36.00	13.83	4.91	16.38	24.29	40.00	-15.71	H
155.91	14.16	5.11	17.02	24.62	43.50	-18.88	H
519.06	20.46	10.54	35.15	30.92	46.00	-15.08	H
668.14	23.32	14.66	48.85	33.78	46.00	-12.22	H
726.81	23.85	15.58	51.93	34.31	46.00	-11.69	H
945.44	25.52	18.88	62.93	35.98	46.00	-10.02	H



above 1GHz

Mode:a; Polarization:Horizontal; Modulation Type:GFSK; Channel:Low

Frequency (MHz)	Antenna factors (dB/m)	Cable Loss (dB)	Preamp Gain (dB)	Reading Level (dB μ V)	Level (dB μ V/m)	Limit (dB μ V/m)	Over limit (dB)
1592.571	26.15	4.58	38.04	43.45	36.14	74.00	-37.86
3318.471	31.80	6.17	37.93	43.85	43.89	74.00	-30.11
4804.000	34.10	7.73	38.40	46.10	49.53	74.00	-24.47
7206.000	35.60	9.65	37.12	43.27	51.40	74.00	-22.60
9608.000	37.10	11.06	35.09	39.72	52.79	74.00	-21.21
14873.890	40.44	14.82	38.91	37.16	53.51	74.00	-20.49

Mode:a; Polarization:Vertical; Modulation Type:GFSK; Channel:Low

Frequency (MHz)	Antenna factors (dB/m)	Cable Loss (dB)	Preamp Gain (dB)	Reading Level (dB μ V)	Level (dB μ V/m)	Limit (dB μ V/m)	Over limit (dB)
1431.047	25.03	4.39	38.06	42.21	33.57	74.00	-40.43
3196.094	31.78	6.08	37.92	45.86	45.80	74.00	-28.20
4804.000	34.10	7.73	38.40	45.78	49.21	74.00	-24.79
7206.000	35.60	9.65	37.12	42.96	51.09	74.00	-22.91
9608.000	37.10	11.06	35.09	38.93	52.00	74.00	-22.00
15398.830	40.80	15.17	38.46	35.58	53.09	74.00	-20.91



Mode:a; Polarization:Horizontal; Modulation Type:GFSK; Channel:middle

Frequency (MHz)	Antenna factors (dB/m)	Cable Loss (dB)	Preamp Gain (dB)	Reading Level (dB μ V)	Level (dB μ V/m)	Limit (dB μ V/m)	Over limit (dB)
1682.477	26.41	4.69	38.03	41.52	34.59	74.00	-39.41
3546.577	32.02	6.34	37.95	42.17	42.58	74.00	-31.42
4880.000	34.17	7.83	38.44	41.62	45.18	74.00	-28.82
7320.000	35.54	9.73	37.01	41.26	49.52	74.00	-24.48
9760.000	37.10	11.20	35.02	38.76	52.04	74.00	-21.96
14366.840	39.85	14.69	38.96	38.12	53.70	74.00	-20.30

Mode:a; Polarization:Vertical; Modulation Type:GFSK; Channel:middle

Frequency (MHz)	Antenna factors (dB/m)	Cable Loss (dB)	Preamp Gain (dB)	Reading Level (dB μ V)	Level (dB μ V/m)	Limit (dB μ V/m)	Over limit (dB)
1390.276	24.77	4.34	38.06	46.85	37.90	74.00	-36.10
3060.486	31.04	5.98	37.91	43.48	42.59	74.00	-31.41
4880.000	34.17	7.83	38.44	43.87	47.43	74.00	-26.57
7320.000	35.54	9.73	37.01	41.96	50.22	74.00	-23.78
9760.000	37.10	11.20	35.02	39.57	52.85	74.00	-21.15
13288.280	38.39	13.80	38.29	39.60	53.50	74.00	-20.50



Mode:a; Polarization:Horizontal; Modulation Type:GFSK; Channel:High

Frequency (MHz)	Antenna factors (dB/m)	Cable Loss (dB)	Preamp Gain (dB)	Reading Level (dBμV)	Level (dBμV/m)	Limit (dBμV/m)	Over limit (dB)
1059.511	24.13	3.86	38.09	45.86	35.76	74.00	-38.24
3357.061	31.80	6.20	37.94	42.96	43.02	74.00	-30.98
4960.000	34.26	7.94	38.48	43.87	47.59	74.00	-26.41
7440.000	35.58	9.81	36.91	41.27	49.75	74.00	-24.25
9920.000	37.22	11.37	34.94	38.79	52.44	74.00	-21.56
14366.840	39.85	14.69	38.96	38.12	53.70	74.00	-20.30

Mode:a; Polarization:Vertical; Modulation Type:GFSK; Channel:High

Frequency (MHz)	Antenna factors (dB/m)	Cable Loss (dB)	Preamp Gain (dB)	Reading Level (dBμV)	Level (dBμV/m)	Limit (dBμV/m)	Over limit (dB)
1597.181	26.18	4.59	38.04	44.02	36.75	74.00	-37.25
3196.094	31.78	6.08	37.92	45.21	45.15	74.00	-28.85
4960.000	34.26	7.94	38.48	43.87	47.59	74.00	-26.41
7440.000	35.58	9.81	36.91	43.42	51.90	74.00	-22.10
9920.000	37.22	11.37	34.94	38.37	52.02	74.00	-21.98
14038.450	39.36	14.60	39.00	38.27	53.23	74.00	-20.77

Remark:

1) The field strength is calculated by adding the Antenna Factor, Cable Factor & Pre-amplifier. The basic equation with a sample calculation is as follows:

$$\text{Final Test Level} = \text{Receiver Reading} + \text{Antenna Factor} + \text{Cable Factor} - \text{Pre-amplifier Factor}$$

2) Scan from 9kHz to 25GHz, the disturbance above 13GHz and below 30MHz was very low, and the above harmonics were the highest point could be found when testing, so only the above harmonics had been displayed. The amplitude of spurious emissions from the radiator which are attenuated more than 20dB below the limit need not be reported.

3) As shown in this section, for frequencies above 1GHz, the field strength limits are based on average limits. However, the peak field strength of any emission shall not exceed the maximum permitted average limits specified above by more than 20 dB under any condition of modulation. So, only the peak measurements were shown in the report.

7.7 Radiated Emissions which fall in the restricted bands

Test Requirement 47 CFR Part 15, Subpart C 15.205 & 15.209
 Test Method: ANSI C63.10 (2013) Section 6.10.5
 Measurement Distance: 3m

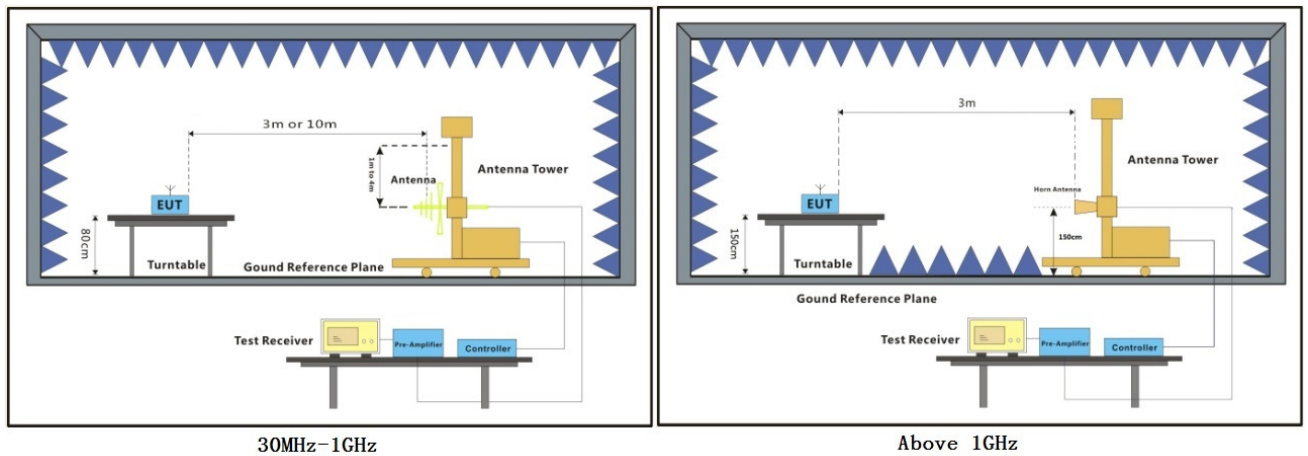
7.7.1 E.U.T. Operation

Operating Environment:

Temperature: 23.0 °C Humidity: 54 % RH Atmospheric Pressure: 1015 mbar

Test mode: a:TX_Keep the EUT in transmitting mode

7.7.2 Test Setup Diagram



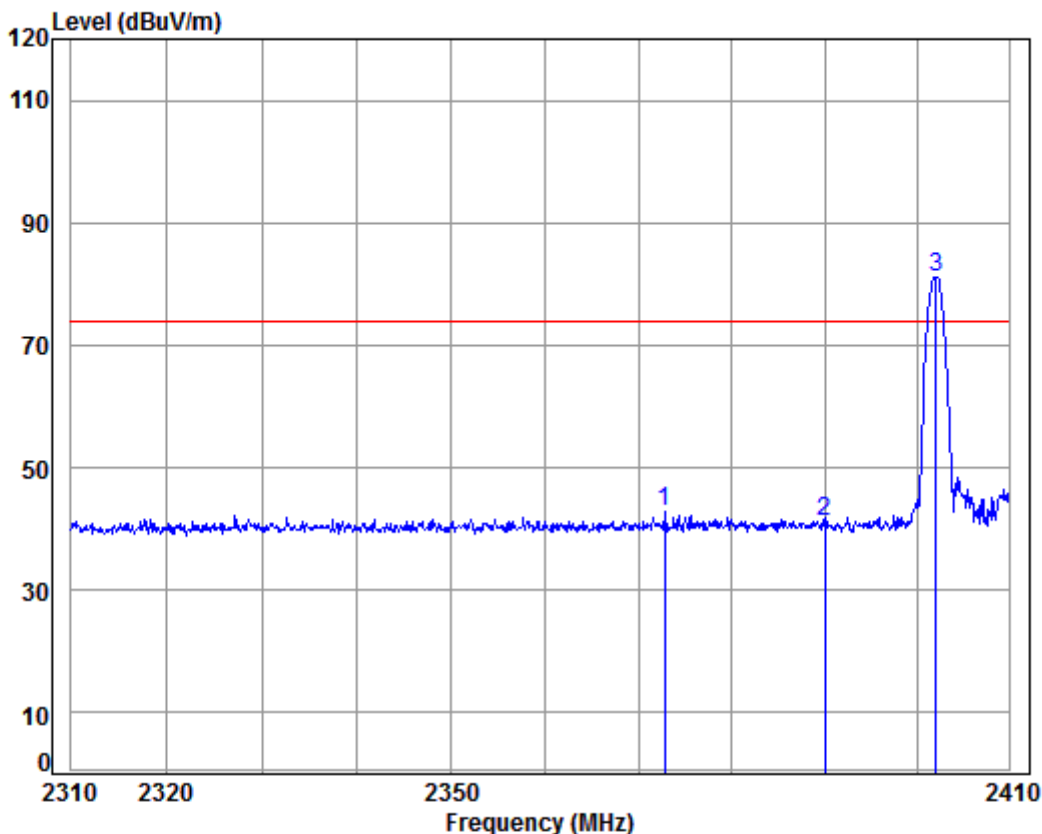


7.7.3 Measurement Data

- a. For below 1GHz, the EUT was placed on the top of a rotating table 0.8 meters above the ground at a 3 or 10 meter semi-anechoic chamber. The table was rotated 360 degrees to determine the position of the highest radiation.
- b. For above 1GHz, the EUT was placed on the top of a rotating table 1.5 meters above the ground at a 3 meter fully-anechoic chamber. The table was rotated 360 degrees to determine the position of the highest radiation.
- c. The EUT was set 3 or 10 meters away from the interference-receiving antenna, which was mounted on the top of a variable-height antenna tower.
- d. The antenna height is varied from one meter to four meters above the ground to determine the maximum value of the field strength. Both horizontal and vertical polarizations of the antenna are set to make the measurement.
- e. For each suspected emission, the EUT was arranged to its worst case and then the antenna was tuned to heights from 1 meter to 4 meters (for the test frequency of below 30MHz, the antenna was tuned to heights 1 meter) and the rotatable table was turned from 0 degrees to 360 degrees to find the maximum reading.
- f. The test-receiver system was set to Peak Detect Function and Specified Bandwidth with Maximum Hold Mode.
- g. If the emission level of the EUT in peak mode was 10dB lower than the limit specified, then testing could be stopped and the peak values of the EUT would be reported. Otherwise the emissions that did not have 10dB margin would be re-tested one by one using peak, quasi-peak or average method as specified and then reported in a data sheet.
- h. Test the EUT in the lowest channel, the middle channel, the highest channel.
- i. The radiation measurements are performed in X, Y, Z axis positioning for Transmitting mode, and found the X axis positioning which it is the worst case.
- j. Repeat above procedures until all frequencies measured was complete.



Mode:a; Polarization:Horizontal; Modulation Type:GFSK; Channel:Low

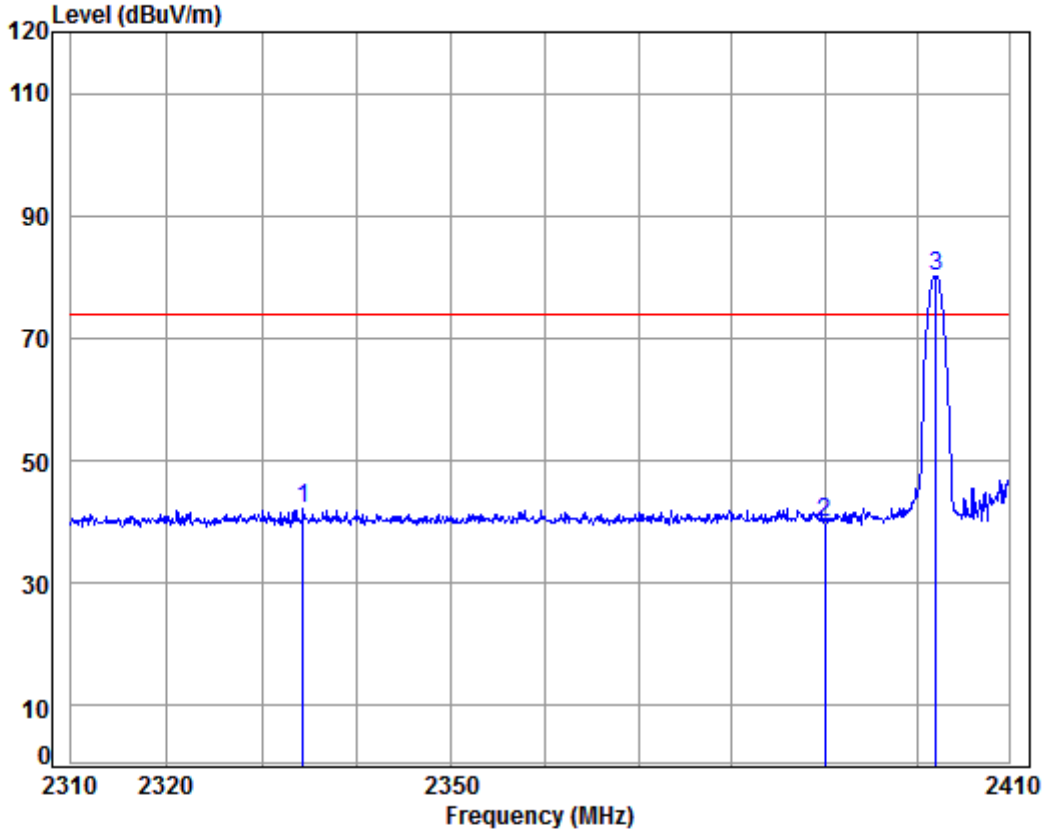


Condition: 3m Horizontal
Job No: : 02700CR
Mode: : 2402 Band edge
: BLE

	Freq	Cable Loss	Ant Factor	Preamp Factor	Read Level	Level	Limit	Over	Remark
	MHz	dB	dB/m	dB	dBuV	dBuV/m	dBuV/m	dB	
1	2372.807	5.32	28.52	37.96	46.90	42.78	74.00	-31.22	Peak
2	2390.000	5.34	28.57	37.96	45.25	41.20	74.00	-32.80	Peak
3	pp 2402.047	5.35	28.61	37.96	85.20	81.20	74.00	7.20	Peak



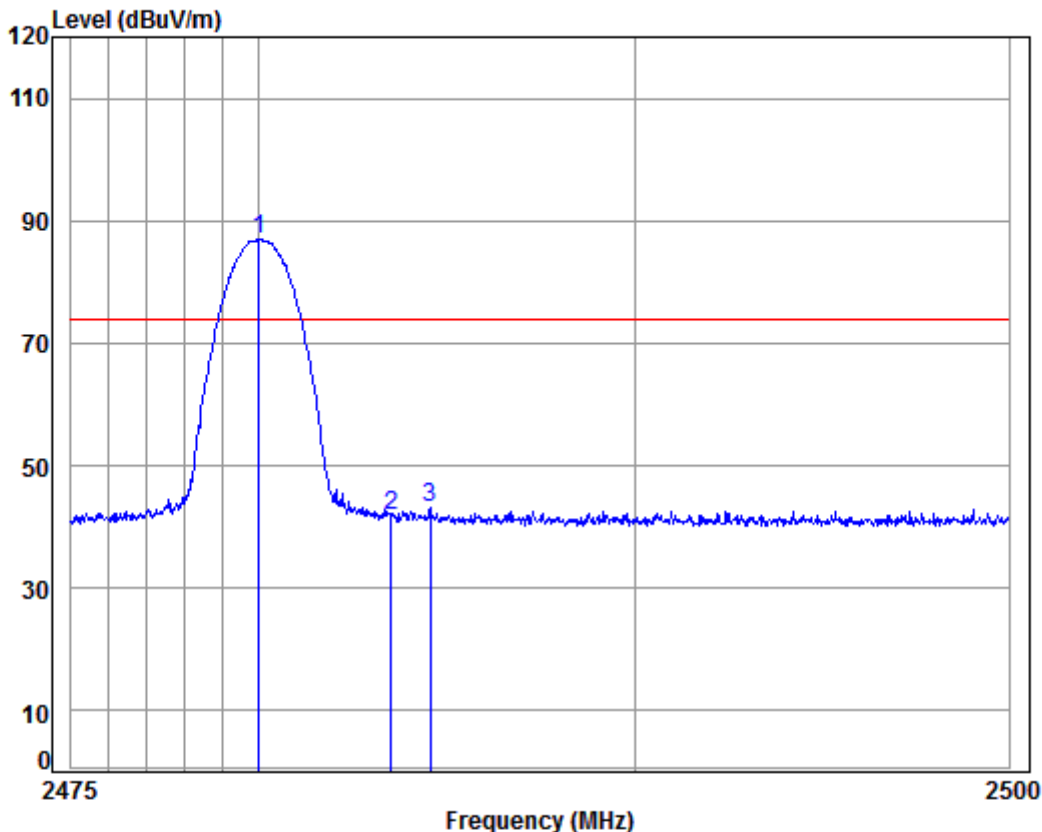
Mode:a; Polarization:Vertical; Modulation Type:GFSK; Channel:Low



Condition: 3m VERTICAL
Job No: : 02700CR
Mode: : 2402 Band edge
: BLE

	Freq	Cable Loss	Ant Factor	Preamp Factor	Read Level	Level	Limit Line	Over Limit	Remark
	MHz	dB	dB/m	dB	dBuV	dBuV/m	dBuV/m	dB	
1	2334.406	5.29	28.41	37.97	46.43	42.16	74.00	-31.84	Peak
2	2390.000	5.34	28.57	37.96	43.98	39.93	74.00	-34.07	Peak
3 pp	2402.047	5.35	28.61	37.96	84.27	80.27	74.00	6.27	Peak

Mode:a; Polarization:Horizontal; Modulation Type:GFSK; Channel:High

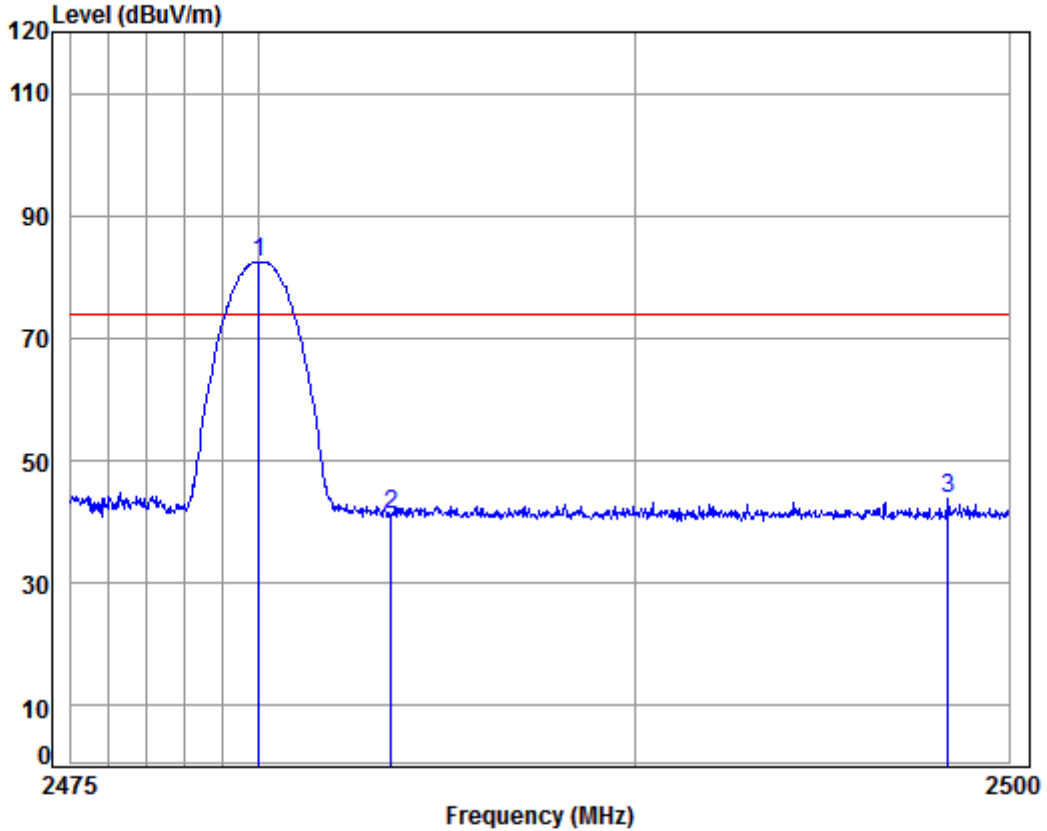


Condition: 3m HORIZONTAL
 Job No: : 02700CR
 Mode: : 2480 Band edge
 : BLE

	Freq	Cable Loss	Ant Factor	Preamp Factor	Read Level	Level	Limit Line	Over Limit	Remark
	MHz	dB	dB/m	dB	dBuV	dBuV/m	dBuV/m	dB	
1	pp 2480.005	5.41	28.97	37.95	90.40	86.83	74.00	12.83	Peak
2	2483.500	5.41	28.98	37.95	45.55	41.99	74.00	-32.01	Peak
3	2484.545	5.41	28.99	37.95	46.64	43.09	74.00	-30.91	Peak



Mode:a; Polarization:Vertical; Modulation Type:GFSK; Channel:High



Condition: 3m VERTICAL
Job No: : 02700CR
Mode: : 2480 Band edge
: BLE

	Freq	Cable Loss	Ant Factor	Preamp Factor	Read Level	Level	Limit Line	Over Limit	Remark
	MHz	dB	dB/m	dB	dBuV	dBuV/m	dBuV/m	dB	
1	pp 2480.005	5.41	28.97	37.95	86.12	82.55	74.00	8.55	Peak
2	2483.500	5.41	28.98	37.95	44.77	41.21	74.00	-32.79	Peak
3	2498.367	5.42	29.05	37.95	47.40	43.92	74.00	-30.08	Peak

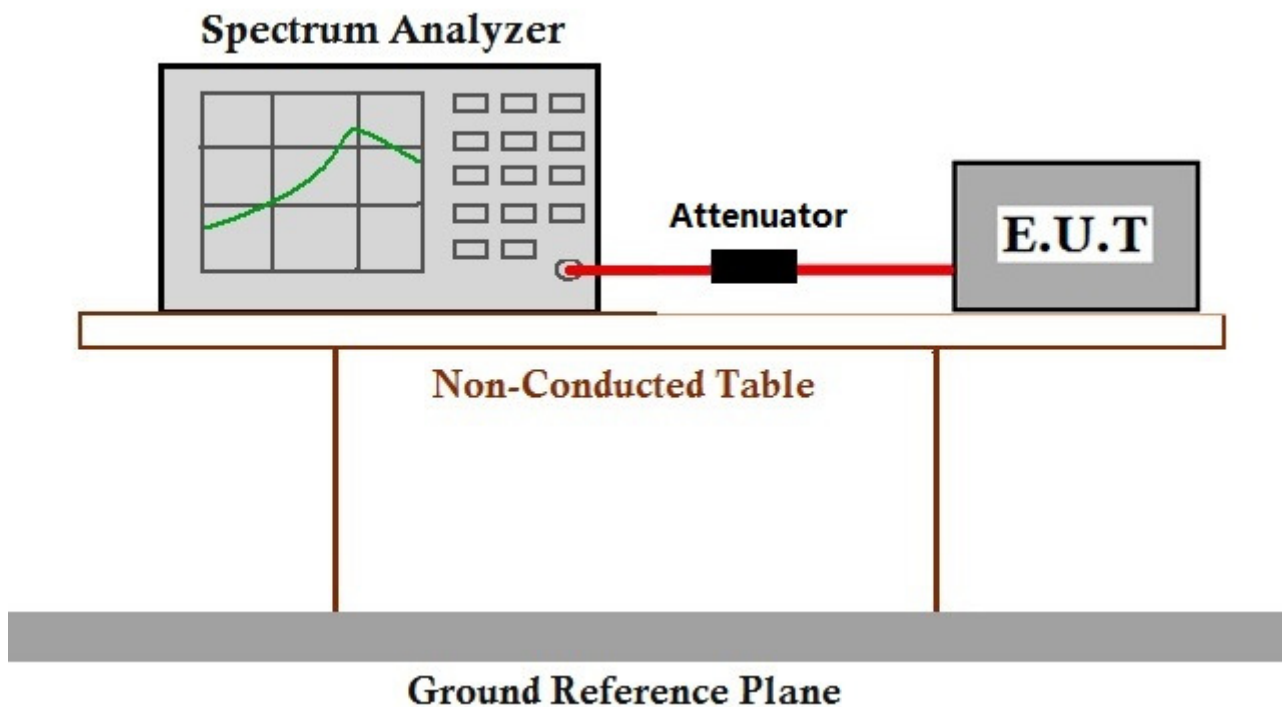
7.8 Conducted Band Edges Measurement

Test Requirement 47 CFR Part 15, Subpart C 15.247(d)
Test Method: ANSI C63.10 (2013) Section 11.13.3.2

7.8.1 E.U.T. Operation

Operating Environment:
Temperature: 23.0 °C Humidity: 56 % RH Atmospheric Pressure: 1020 mbar
Test mode: a:TX_Keep the EUT in transmitting mode

7.8.2 Test Setup Diagram



7.8.3 Measurement Data

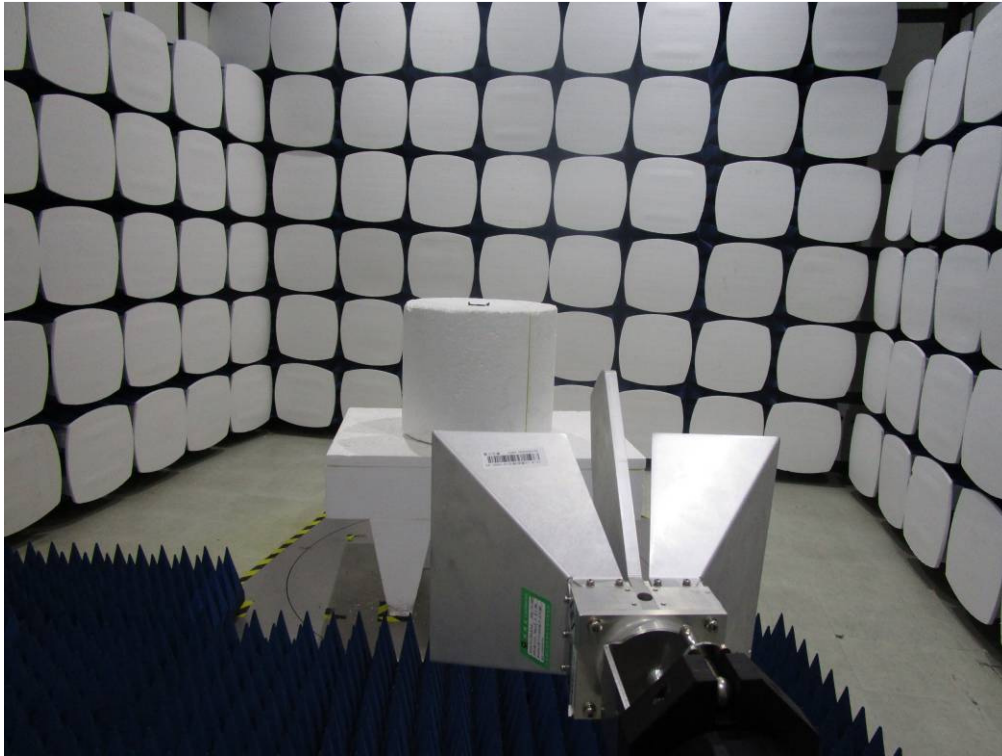
The detailed test data see: Appendix 15.247

8 Photographs

8.1 Conducted Disturbance at AC Power Line(150kHz-30MHz) Test Setup



8.2 Radiated Spurious Emissions Test Setup

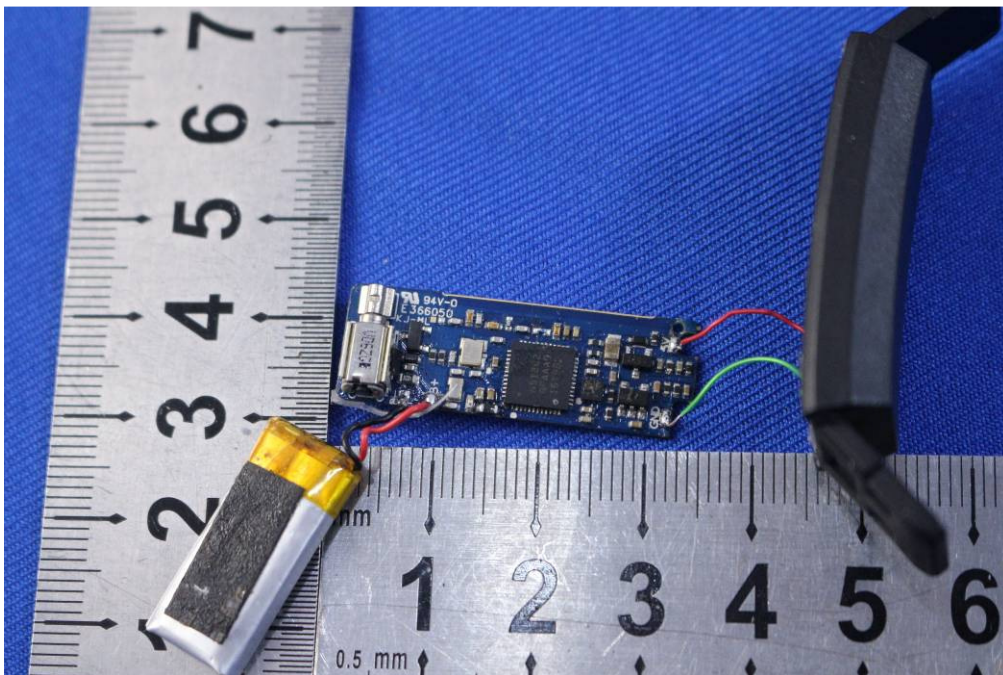
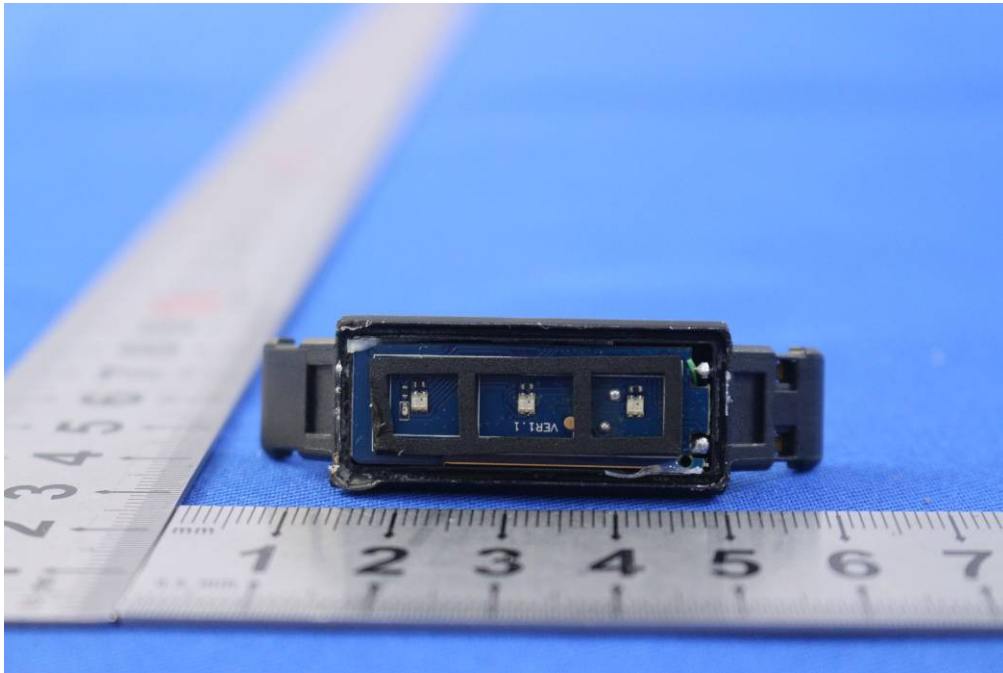


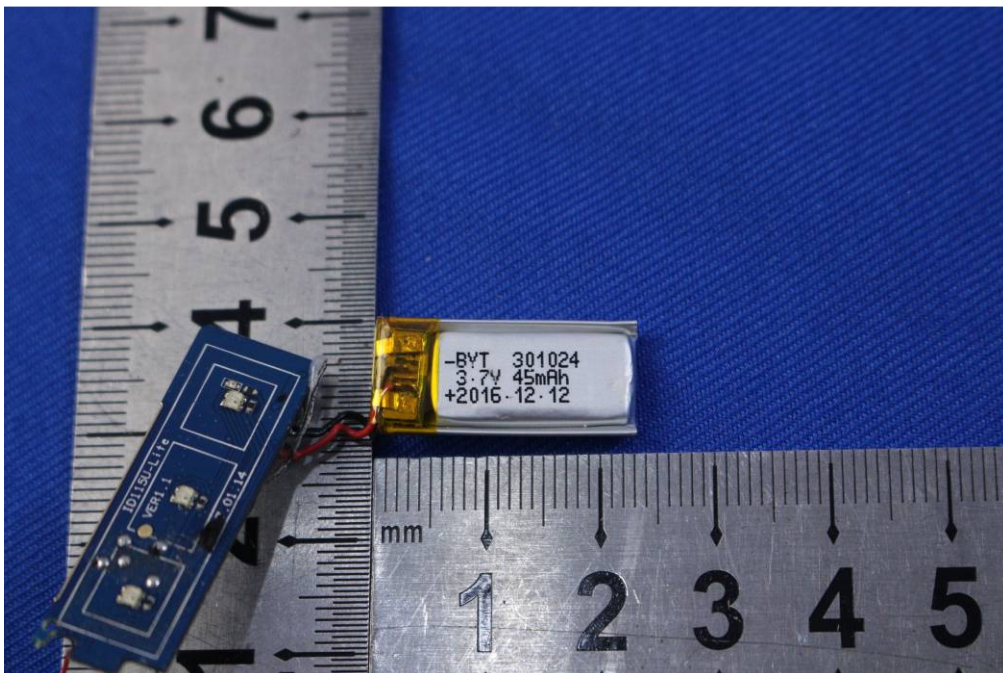
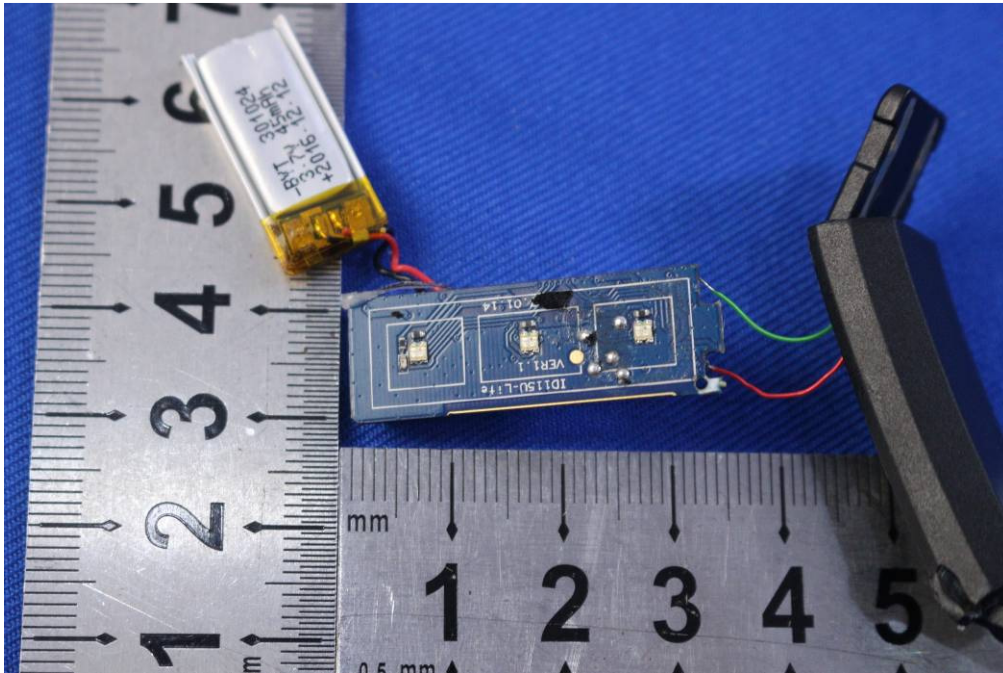
8.3 EUT Constructional Details

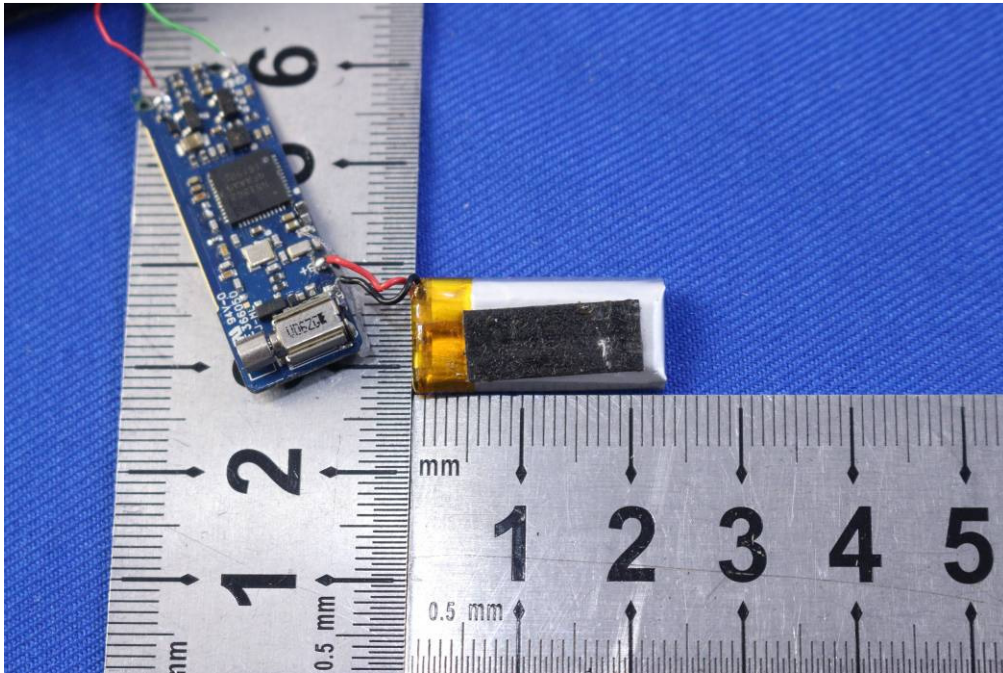












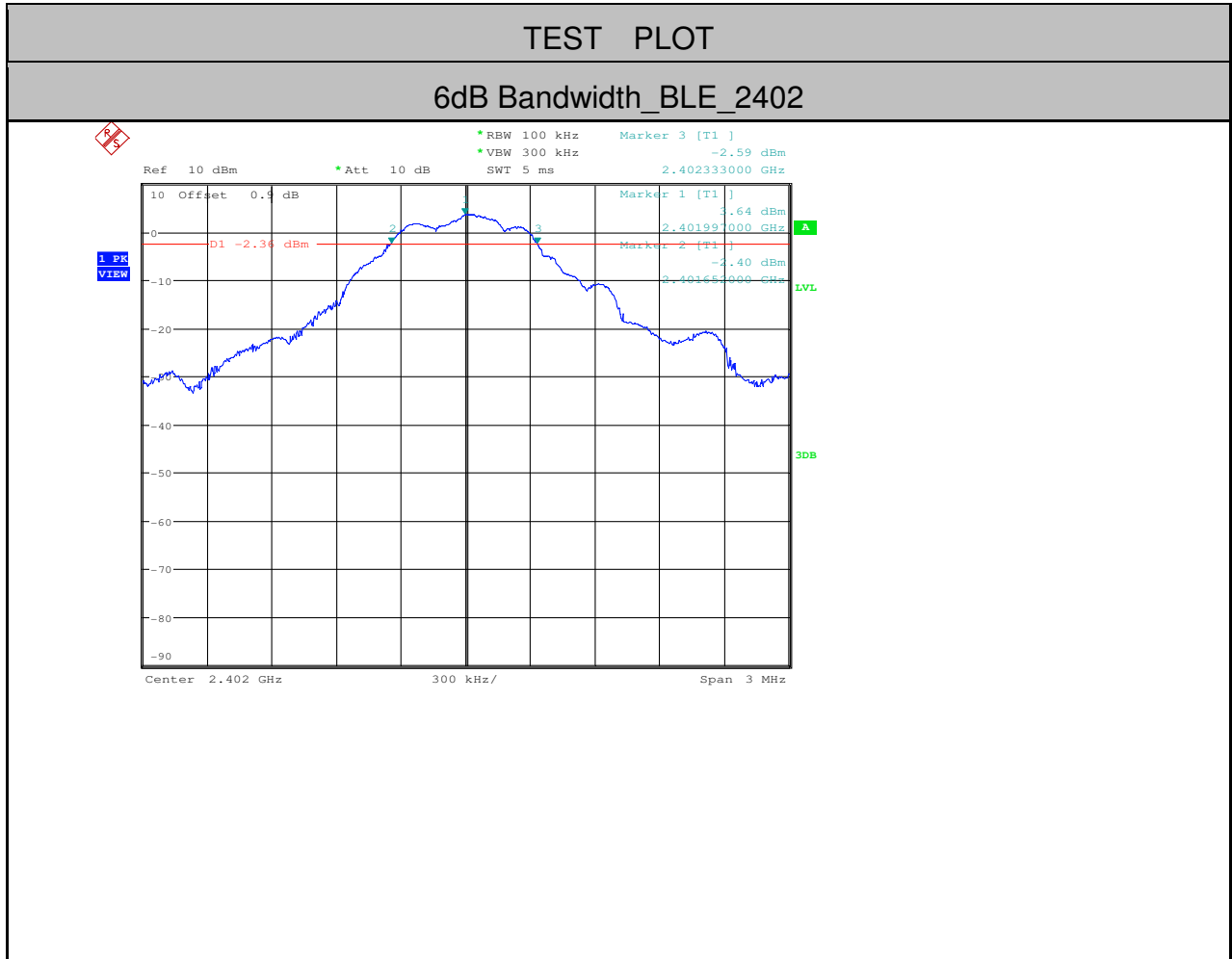


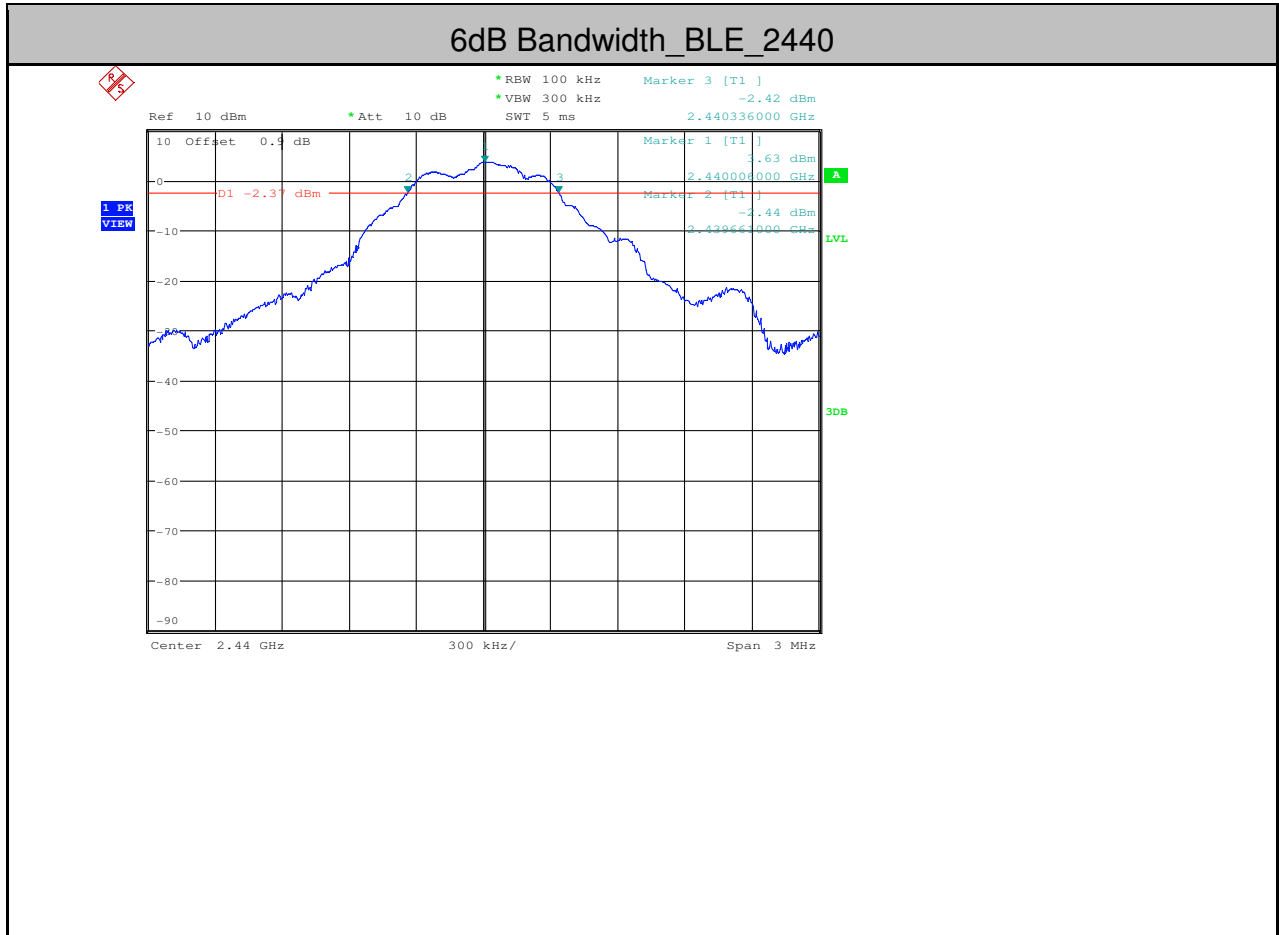
9 Appendix

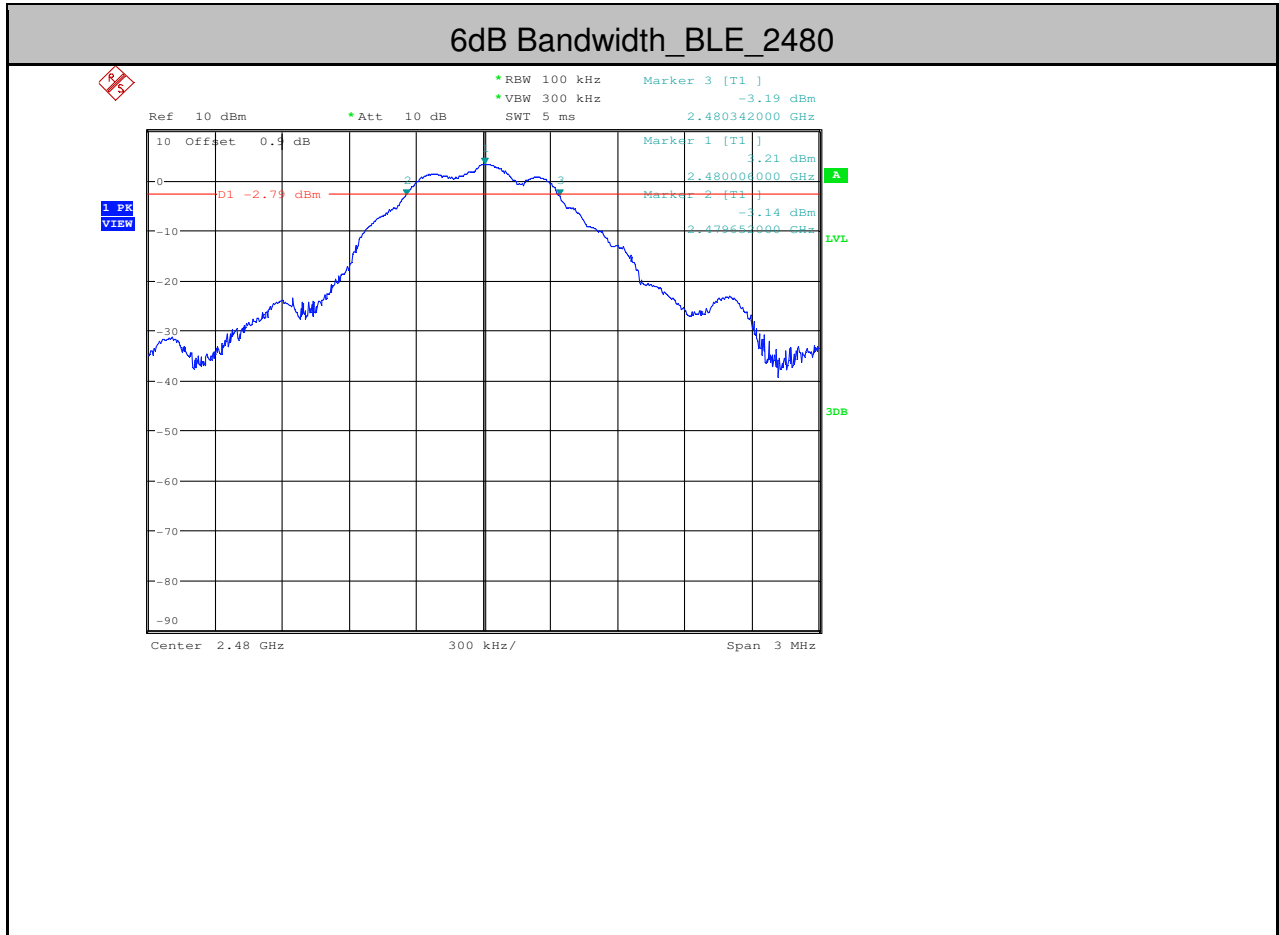
9.1 Appendix 15.247

1.6dB Bandwidth

Test Mode	Test Channel	EBW[MHz]	Limit	Verdict
BLE	2402	0.681	≥ 0.5	PASS
BLE	2440	0.675	≥ 0.5	PASS
BLE	2480	0.690	≥ 0.5	PASS



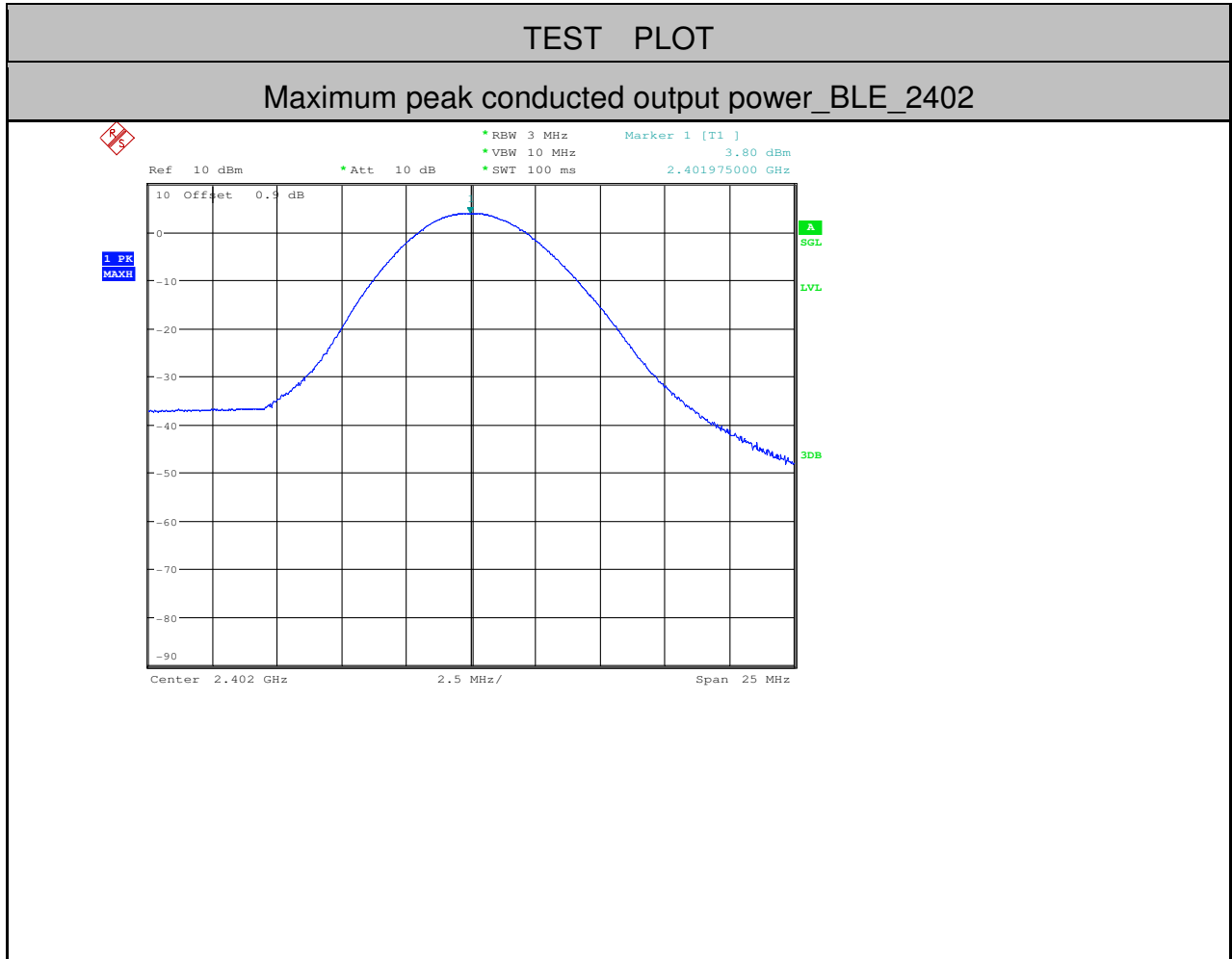


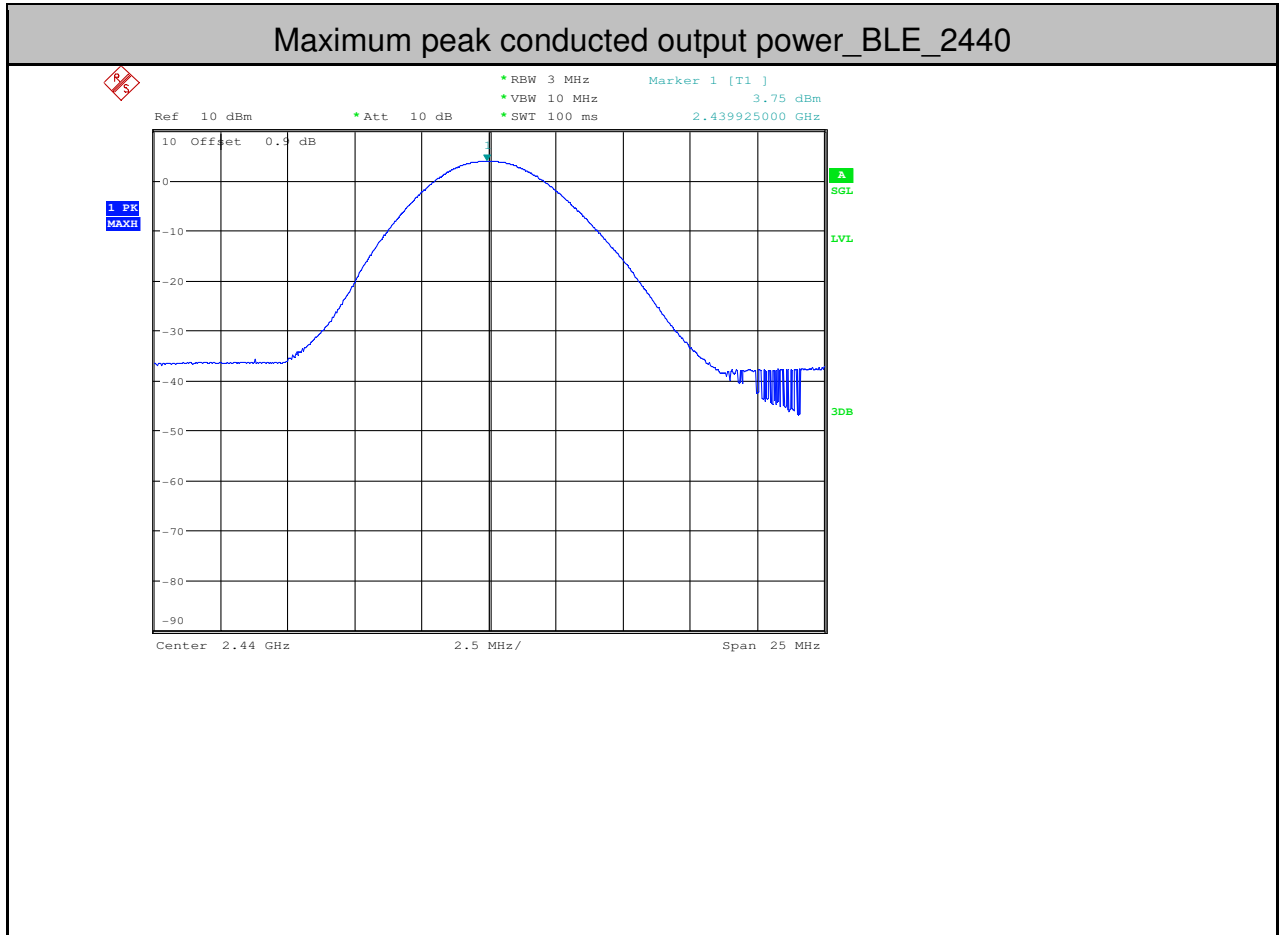


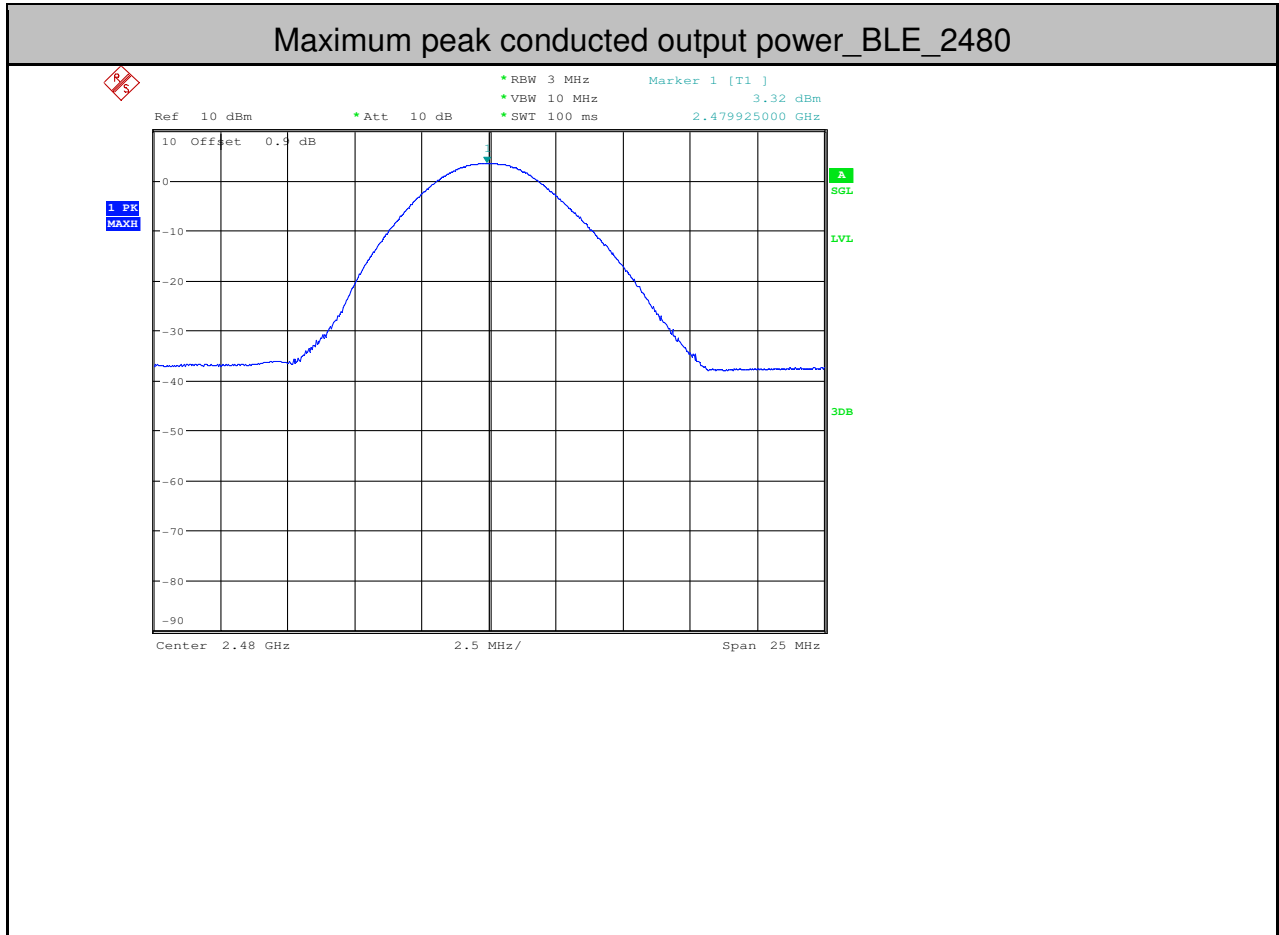


2. Maximum peak conducted output power

Test Mode	Test Channel	Power[dBm]	Limit[dBm]	Verdict
BLE	2402	3.8	<30	PASS
BLE	2440	3.75	<30	PASS
BLE	2480	3.32	<30	PASS



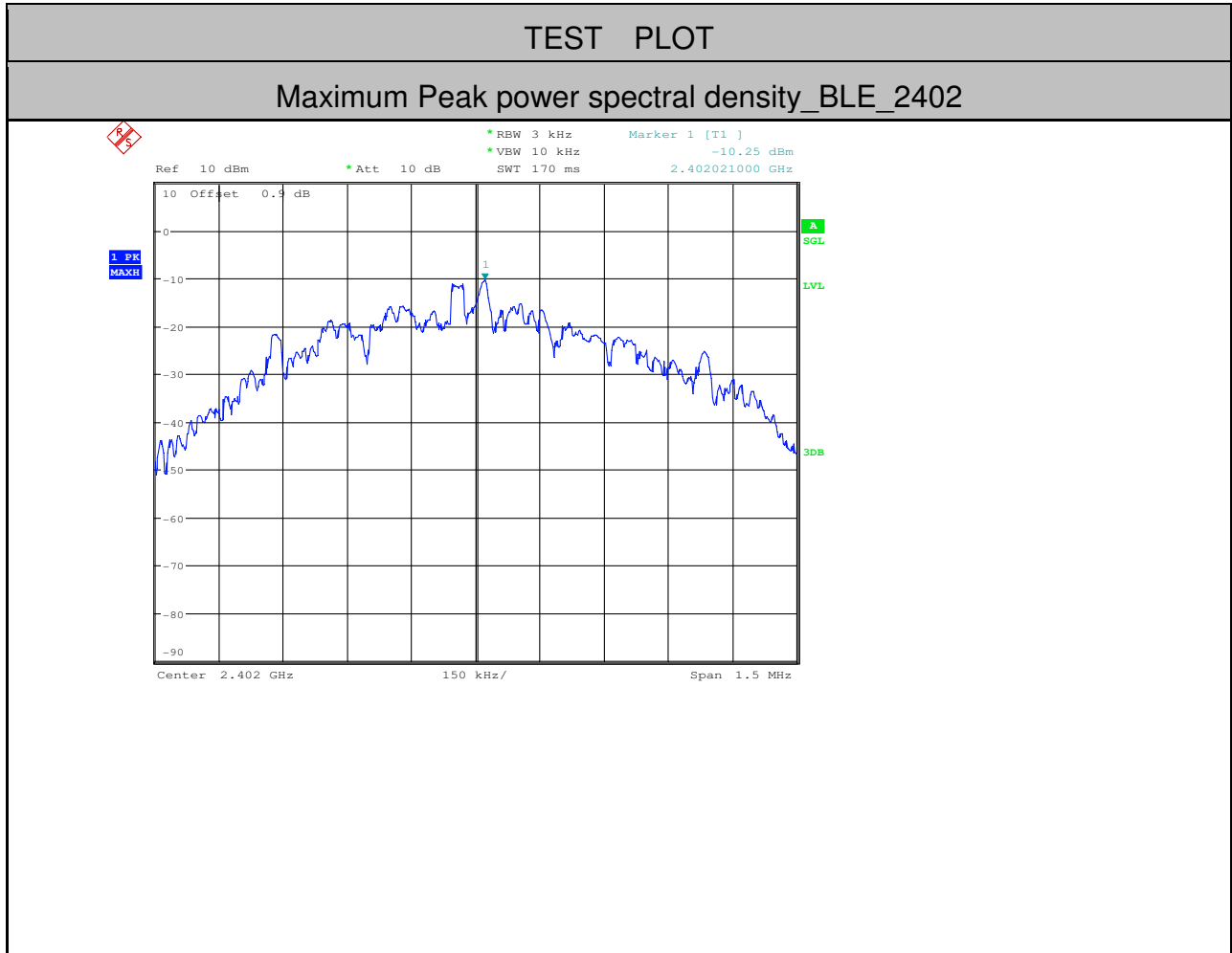


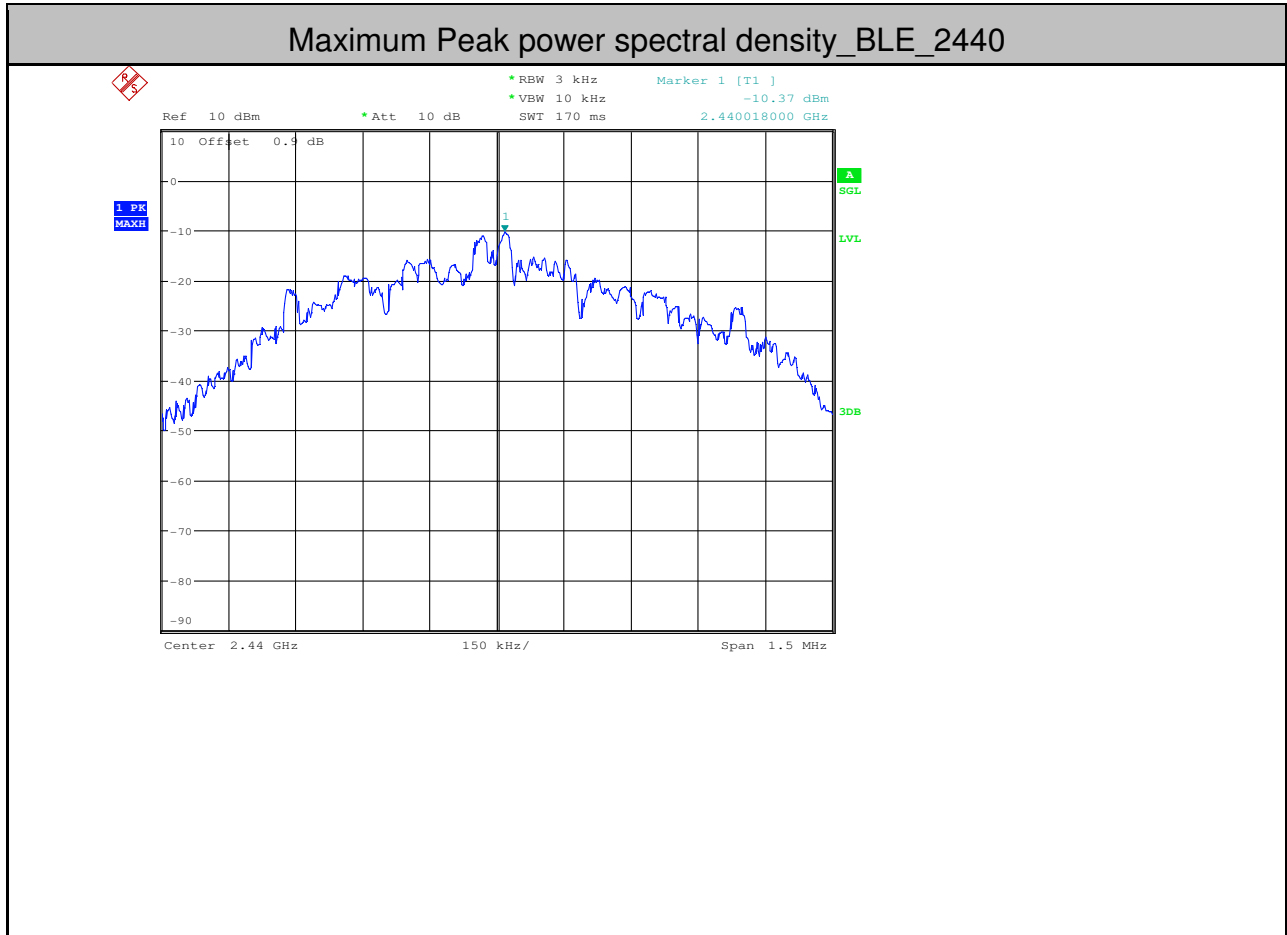


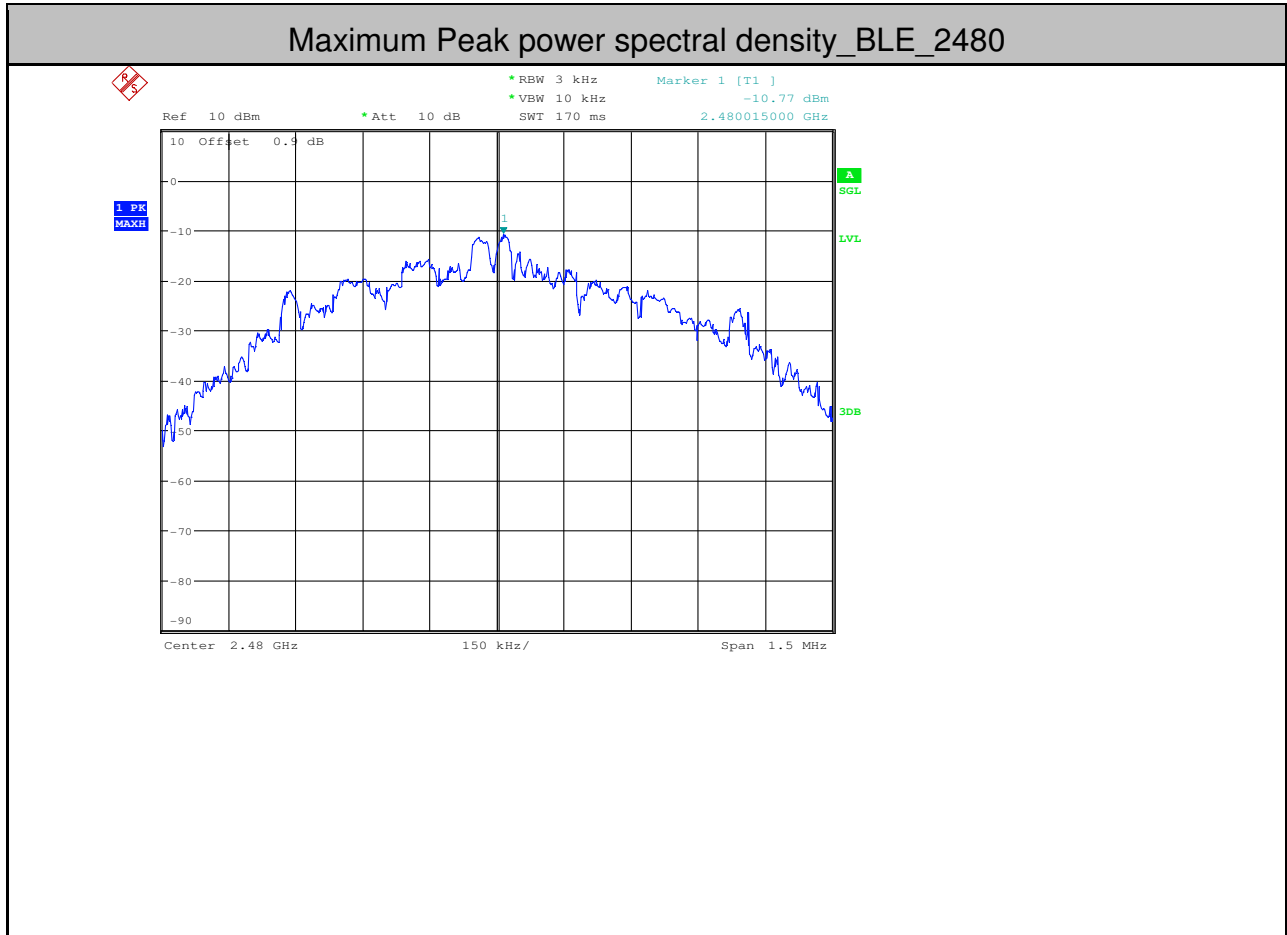


3. Maximum Peak power spectral density

Test Mode	Test Channel	PSD[dBm/MHz]	Limit[dBm/MHz]	Verdict
BLE	2402	-10.25	<8.00	PASS
BLE	2440	-10.37	<8.00	PASS
BLE	2480	-10.77	<8.00	PASS



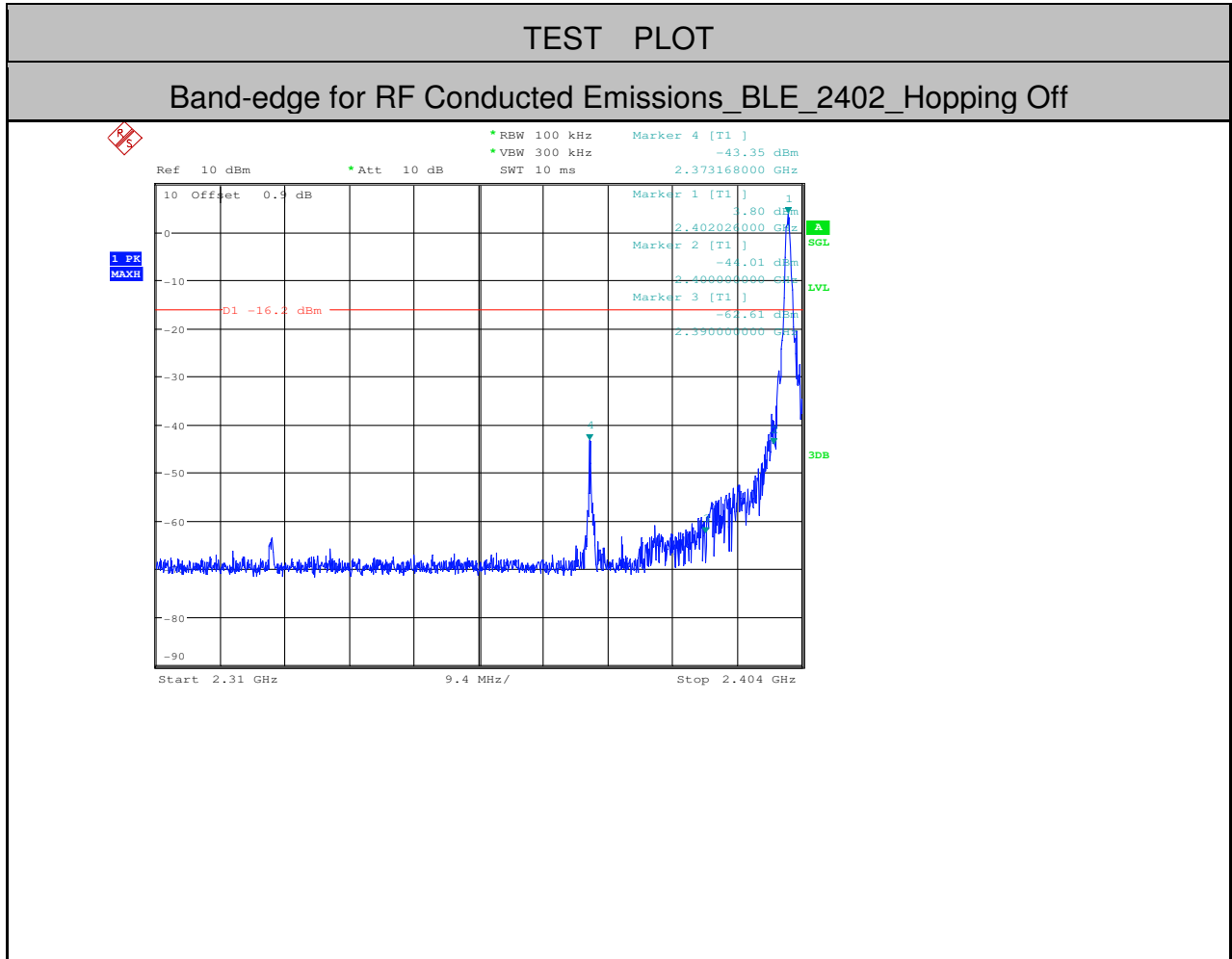


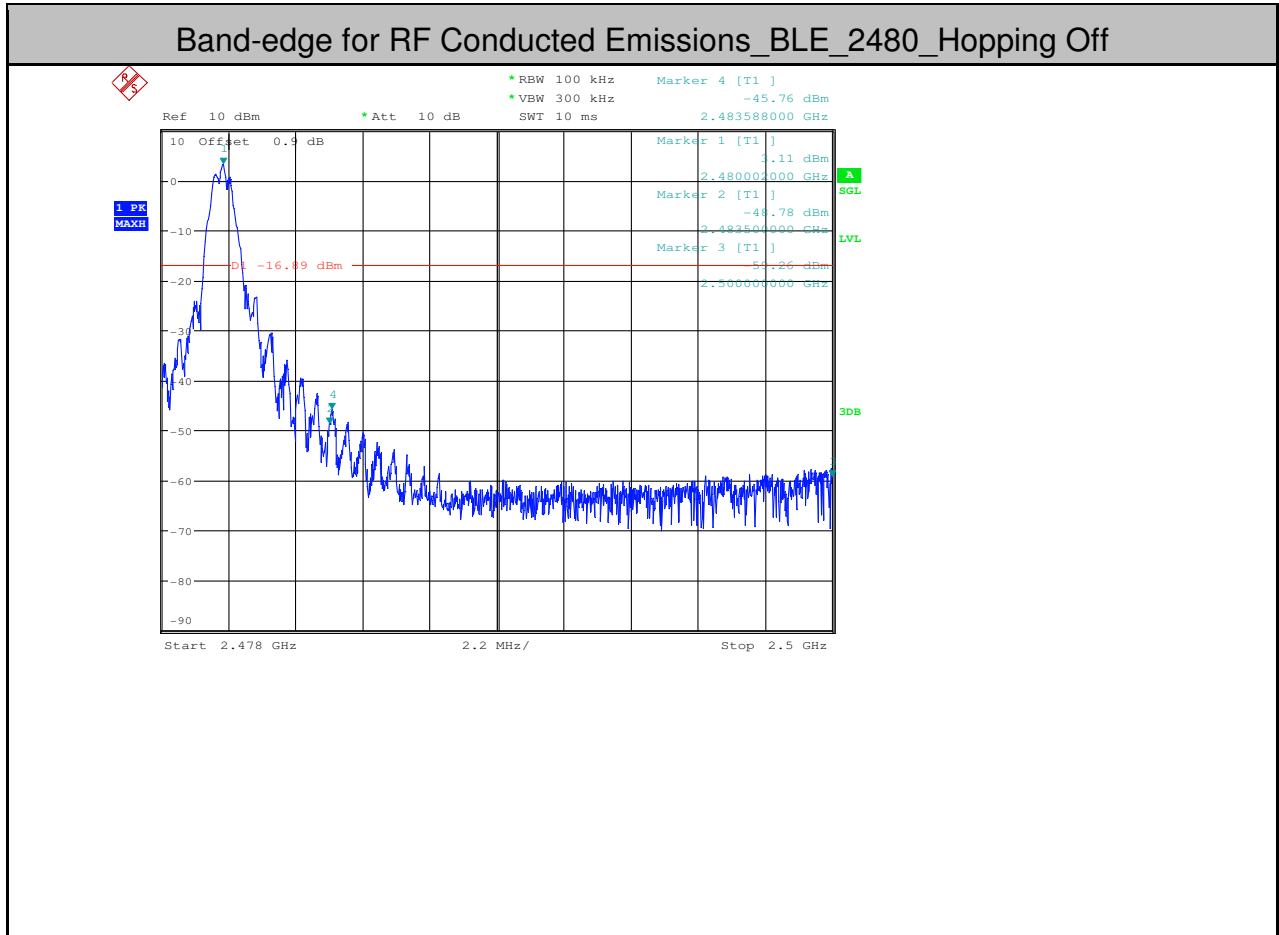




4. Band-edge for RF Conducted Emissions

Test Mode	Test Channel	Carrier Power[dBm]	Max. Spurious Level [dBm]	Limit [dBm]	Verdict
BLE	2402	3.800	-43.352	<-16.2	PASS
BLE	2480	3.110	-45.764	<-16.89	PASS

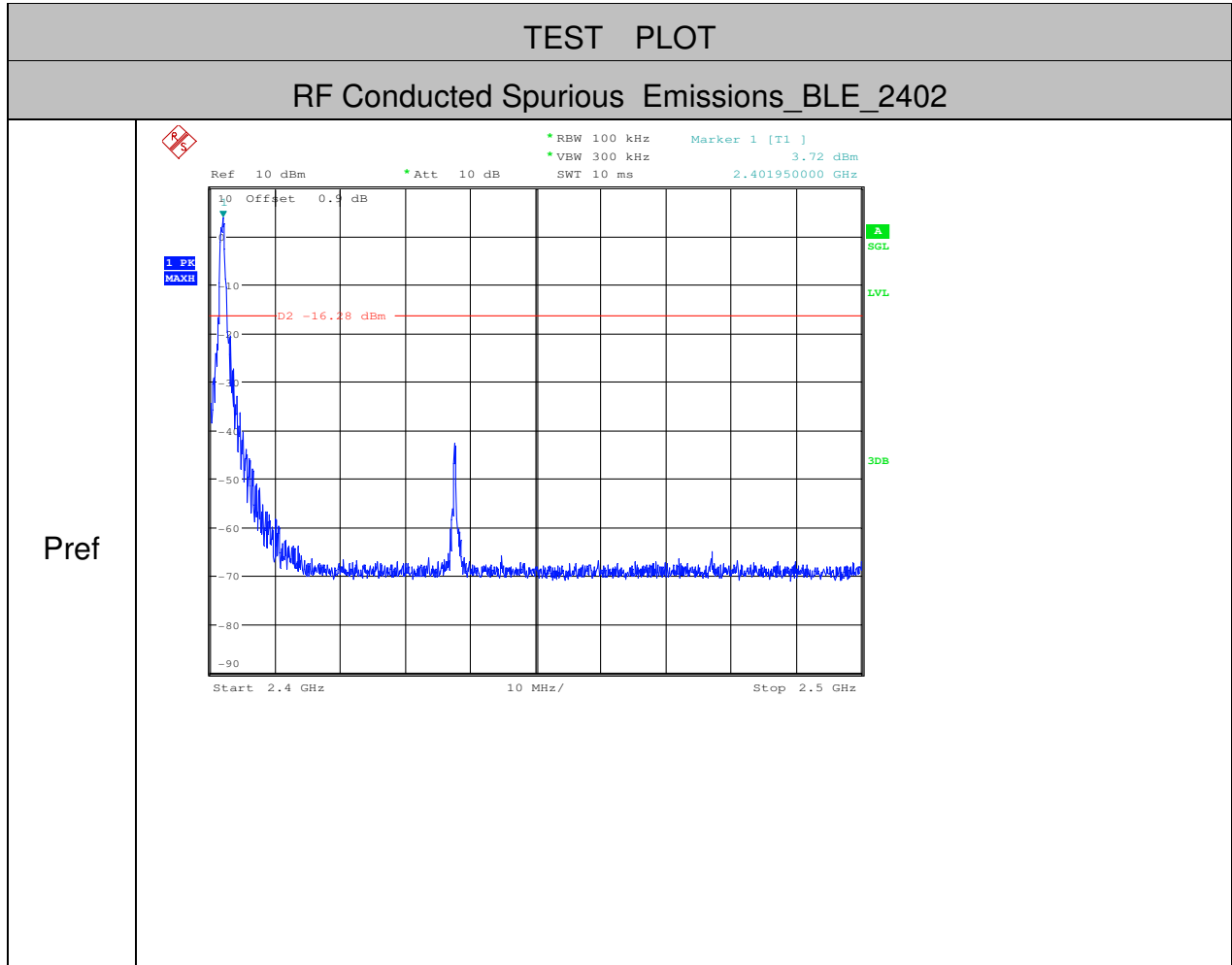


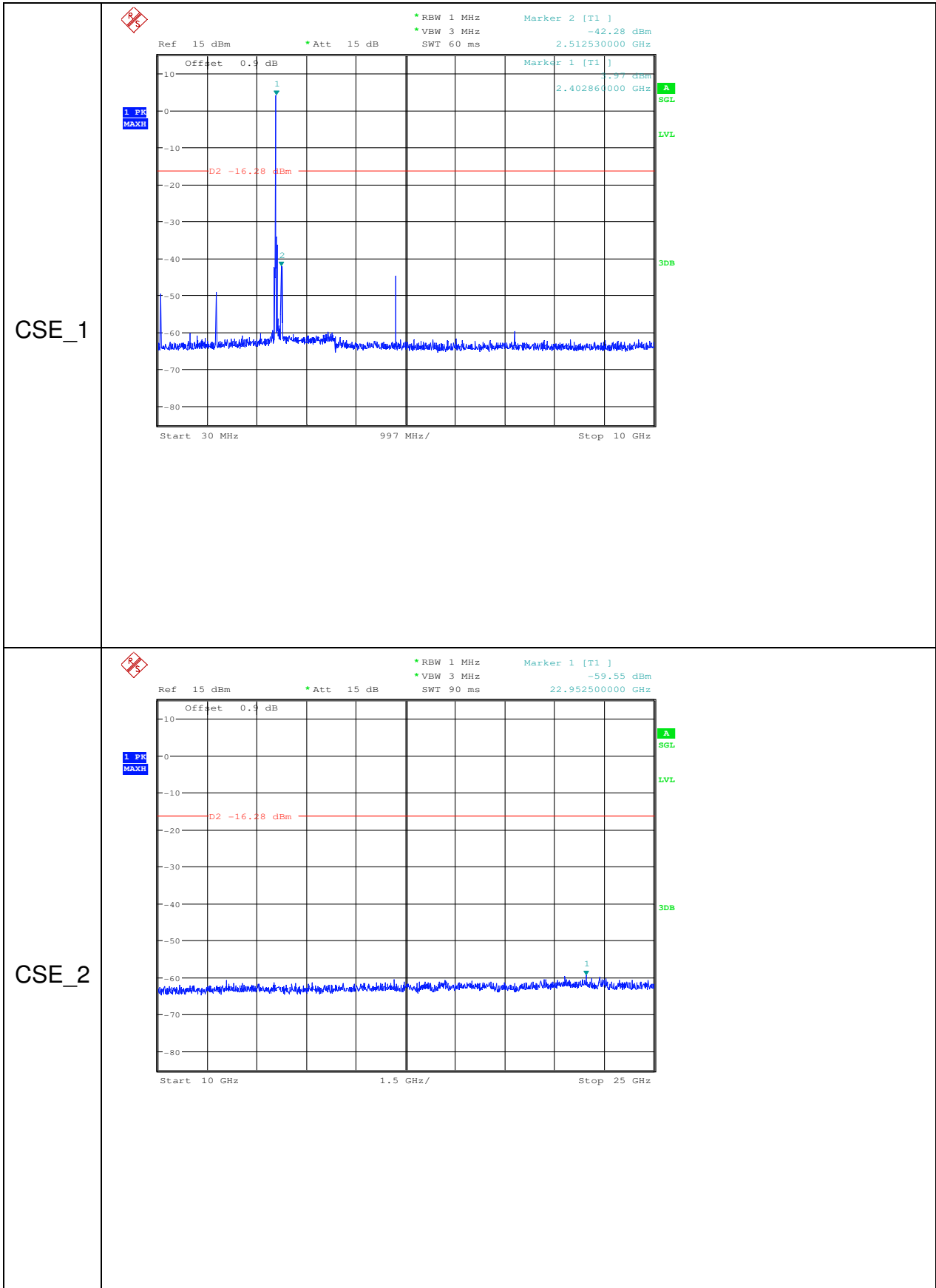


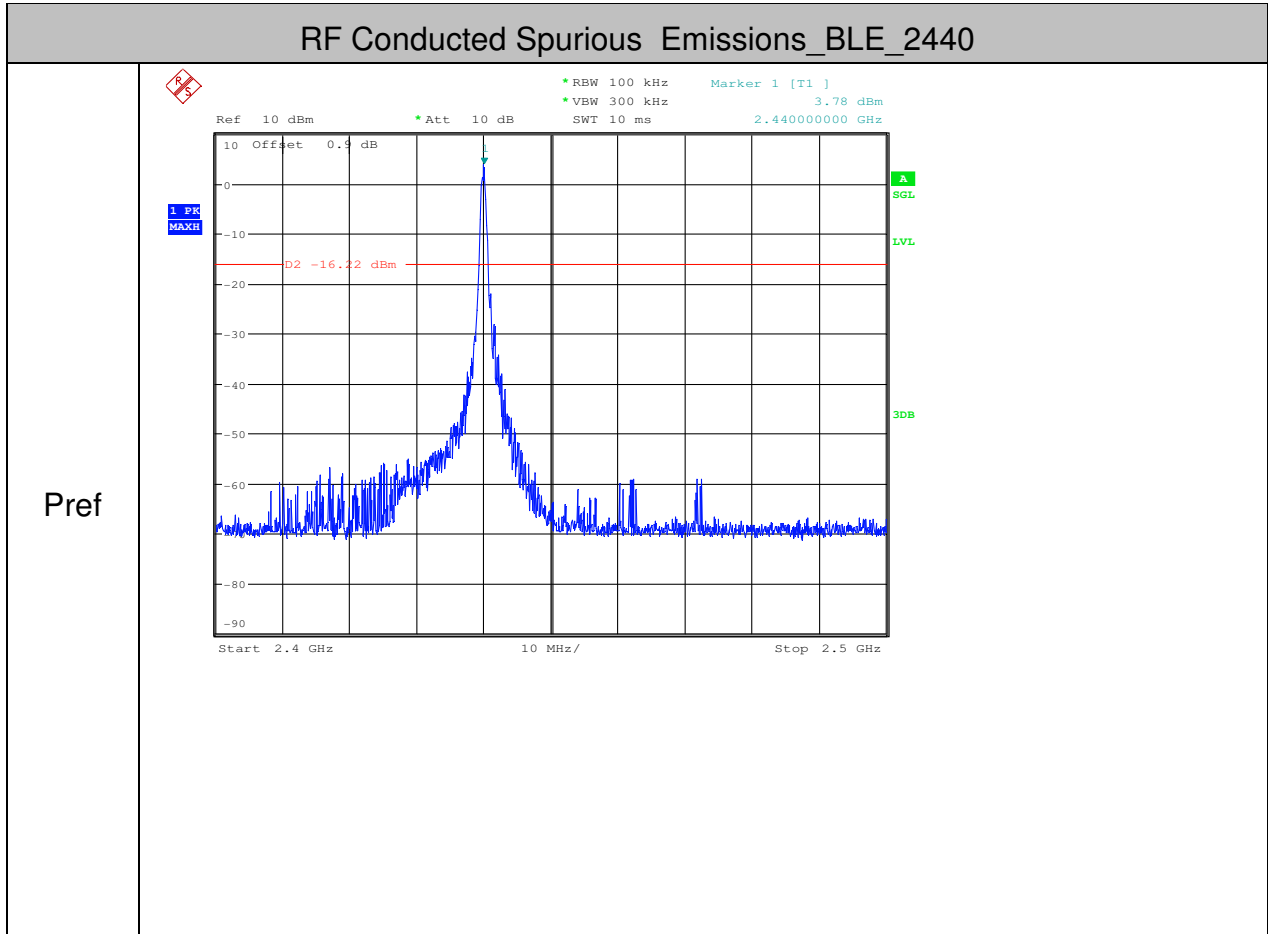


5.RF Conducted Spurious Emissions

Test Mode	Test Channel	StartFre [MHz]	StopFre [MHz]	RBW [kHz]	VBW [kHz]	Pref[dBm]	Max. Level [dBm]	Limit [dBm]	Verdict
BLE	2402	30	10000	1000	3000	3.72	-42.280	<-16.28	PASS
BLE	2402	10000	25000	1000	3000	3.72	-59.550	<-16.28	PASS
BLE	2440	30	10000	1000	3000	3.78	-48.920	<-16.22	PASS
BLE	2440	10000	25000	1000	3000	3.78	-59.290	<-16.22	PASS
BLE	2480	30	10000	1000	3000	3.33	-46.030	<-16.67	PASS
BLE	2480	10000	25000	1000	3000	3.33	-59.930	<-16.67	PASS

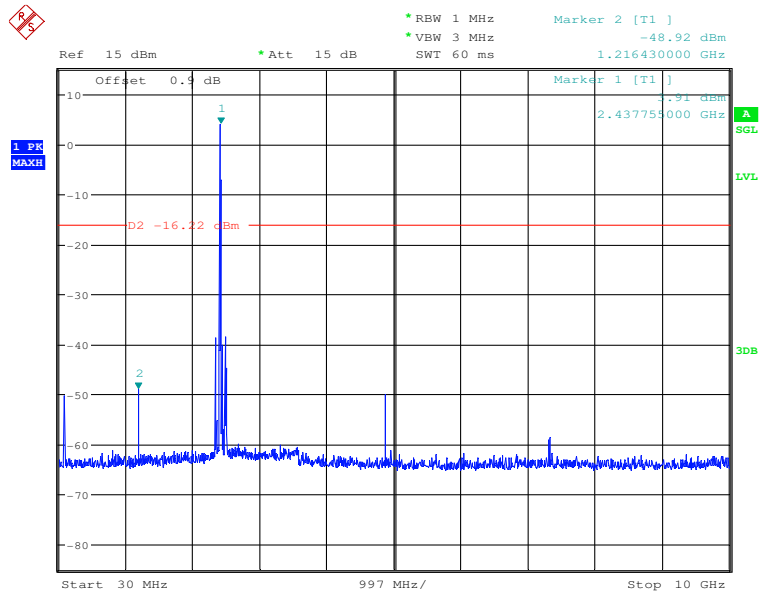








CSE_1



CSE_2

