

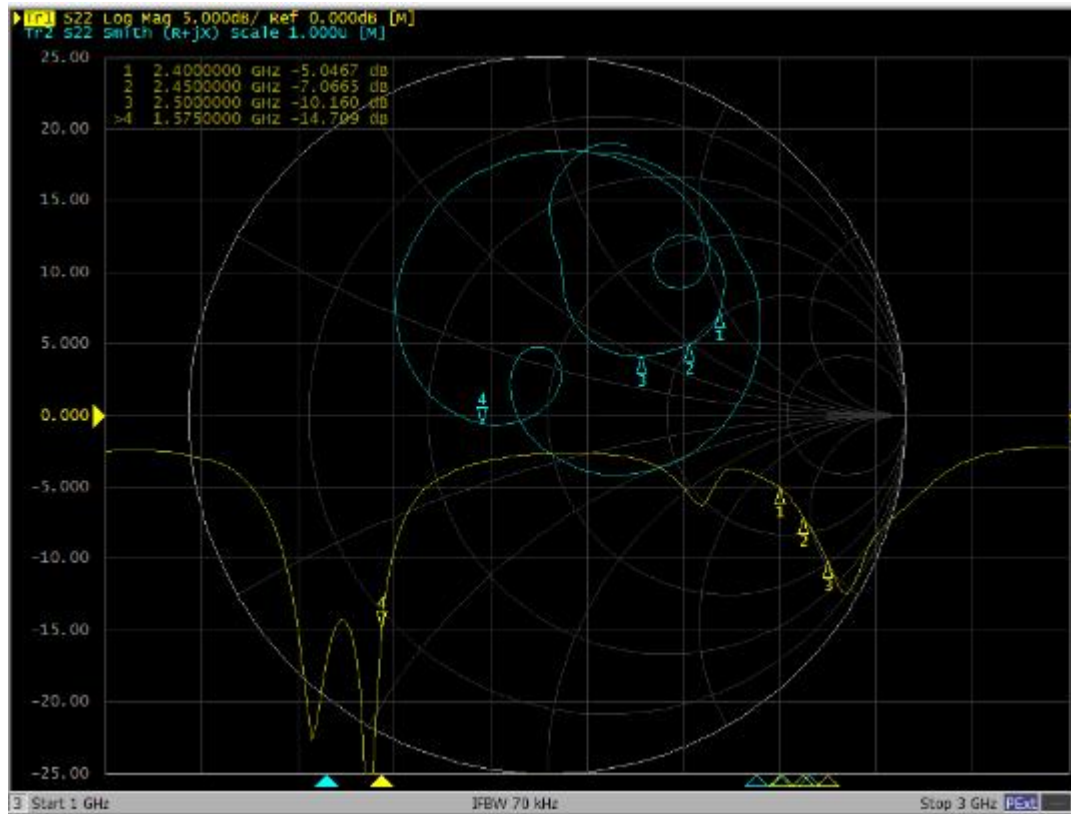


# Welletronics Communication Technology Limited

**ADD:** 1st, 2nd, and 3rd floors, No. 8 Tongfu Estate Industrial Zone, Xinshi Community, Dalang Street,  
Longhua District, Shenzhen

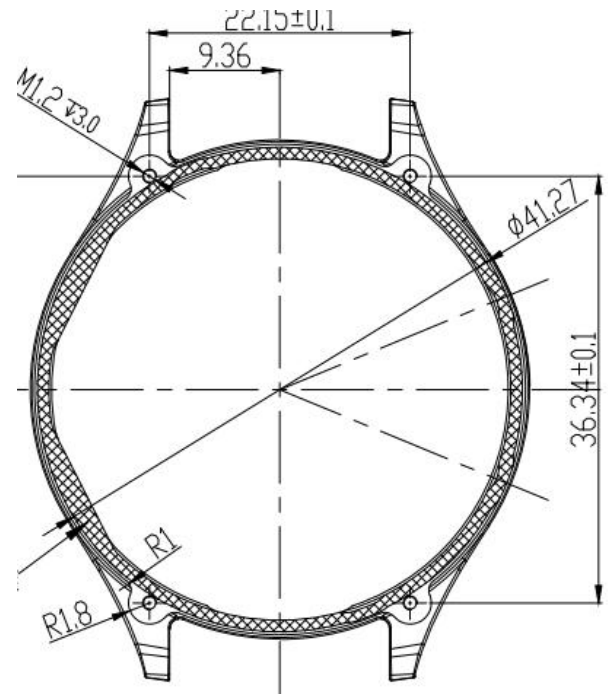
	GTX05
1.GPS/ BT 2.Antenna type: Metal frame antenna	
2023-10-9	R:A
RF:	Tel:

# GPS/ BT SWR



# Antenna size

units mm

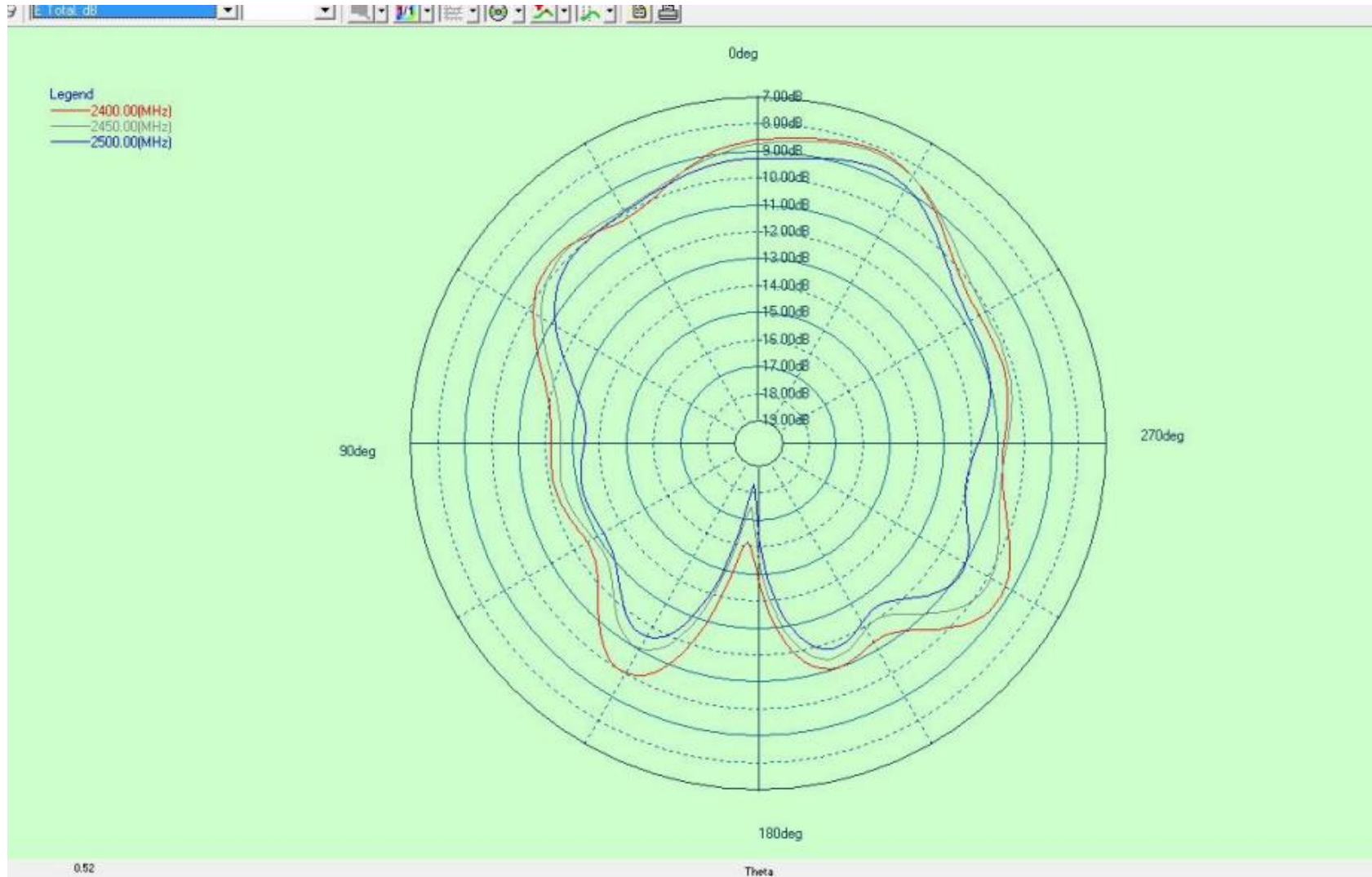


### 3 GPS /BT

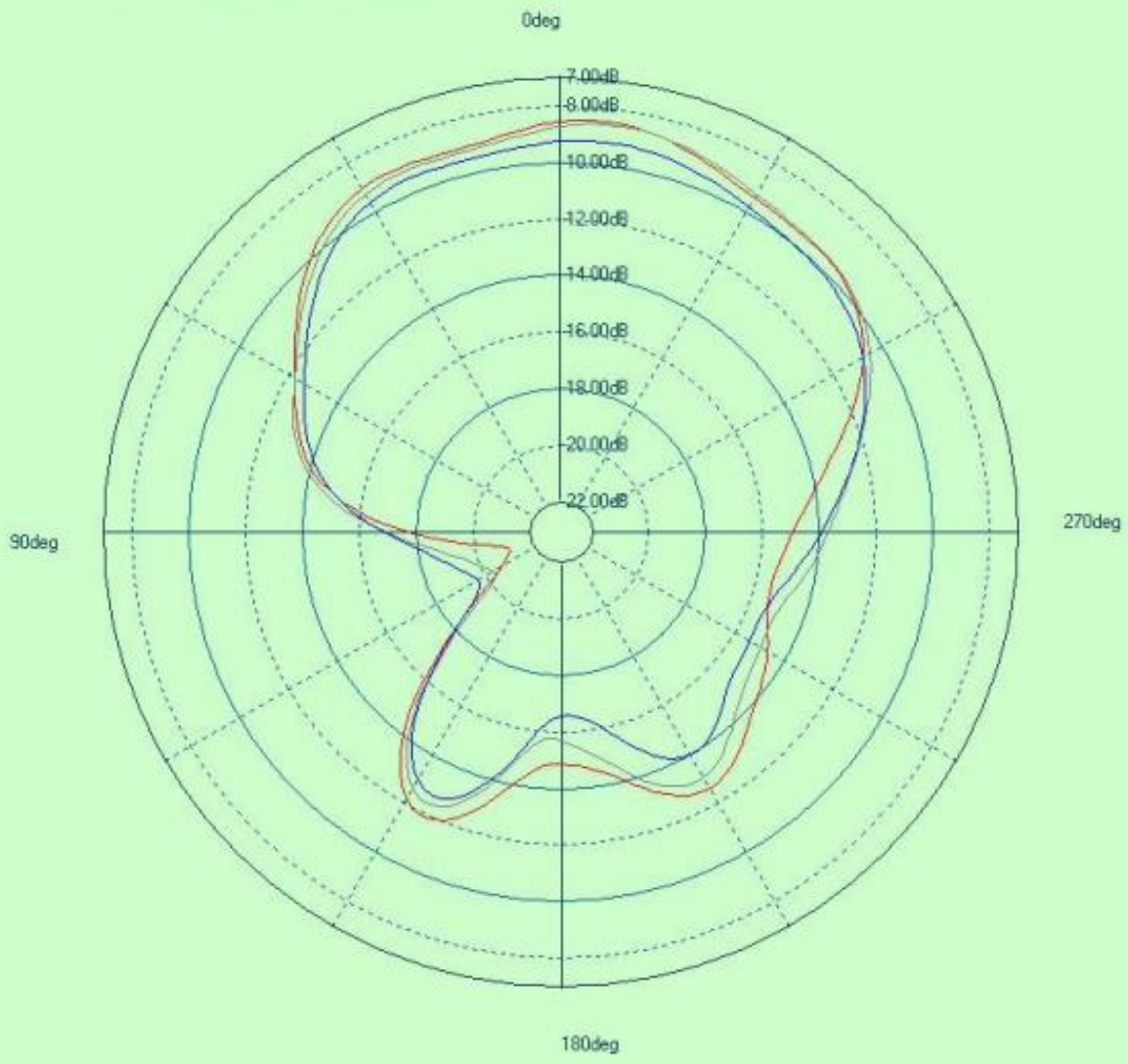
Freq (MHz)	Effi (%)	Effi (dB)	Gain (dBi)
1500	27.5	-5.61	0.97
1510	30.56	-5.15	1.42
1520	33.06	-4.81	1.88
1530	34.19	-4.66	2
1540	35.51	-4.5	2.14
1550	35.39	-4.27	2.13
1560	35.75	-4.01	2.2
1570	34.9	-3.99	1.85
1580	36.16	-3.65	1.95
1590	36.56	-3.23	2.06
1600	36.55	-3.05	2.09

Freq (MHz)	Effi (%)	Effi (dB)	Gain (dBi)
2400	21.42	-6.69	-1.38
2410	21.04	-6.77	-1.39
2420	20.88	-6.8	-1.37
2430	20.47	-6.89	-1.53
2440	21.33	-6.71	-1.29
2450	22.18	-6.54	-1.15
2460	21.99	-6.58	-1.27
2470	21.03	-6.77	-1.59
2480	20.48	-6.89	-1.82
2490	20.12	-6.96	-1.96
2500	19.83	-7.03	-2.2

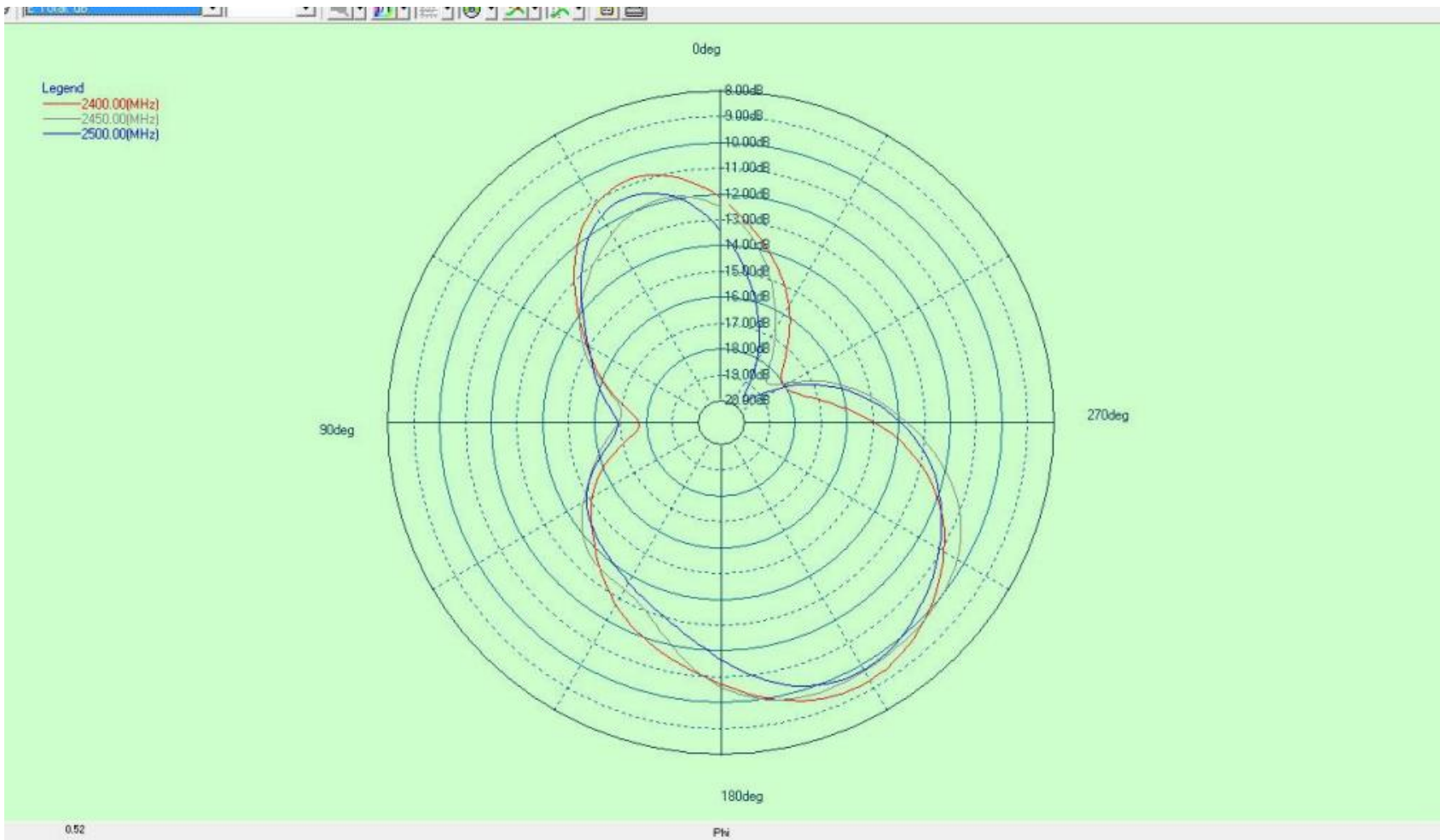
# BT free space radiation



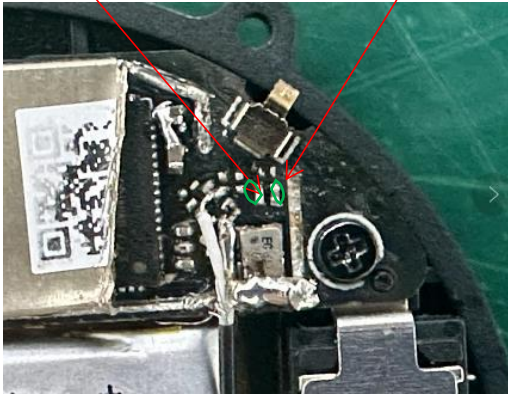
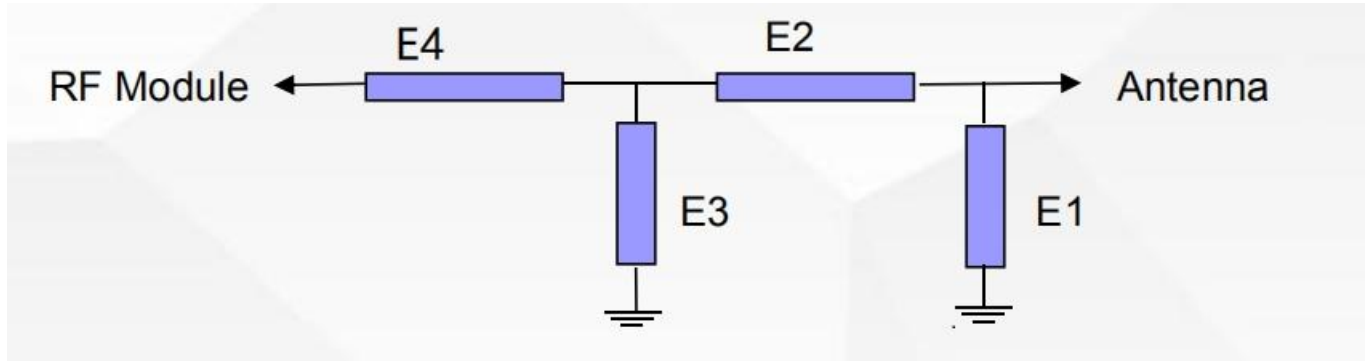
Legend  
— 2400.00(MHz)  
— 2450.00(MHz)  
— 2500.00(MHz)







5



	Element	Value
antenna	E1	1pF
	E2	5.1nH
	E3	N/A
	E4	



**1st, 2nd, and 3rd floors, No. 8 Tongfu Estate Industrial Zone, Xinshi Community, Dalang Street, Longhua District,  
Shenzhen**

**Welletronics Communication Technology Co., LTD**

**Thank you !**