

The left photo :It has been certification before;

The right photo: BQ25170 Will apply for certification;

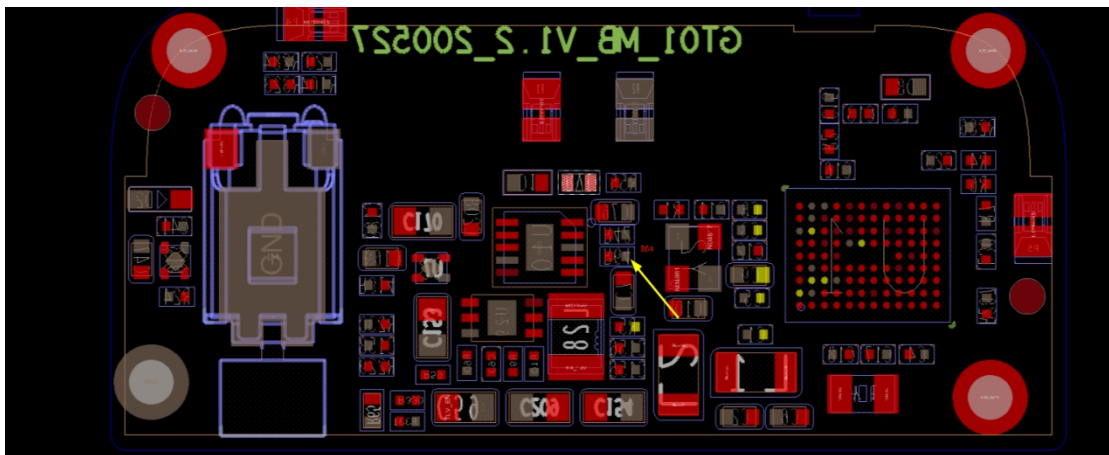
BQ25170 is charging IC model number.arrow indication is differences in PCB layout

The original charging IC is BQ24045,Now is change to BQ25170.

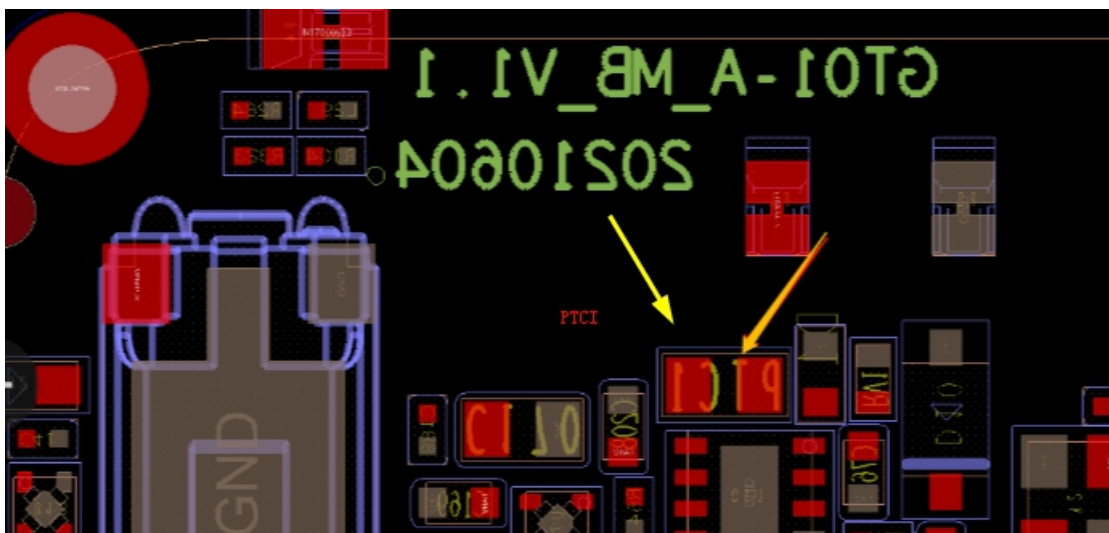
the same:Their trademark is TI、Charging current、 size、 ESD performance、 Charging principle are identical

Differences:Their PIN pins are defined differently

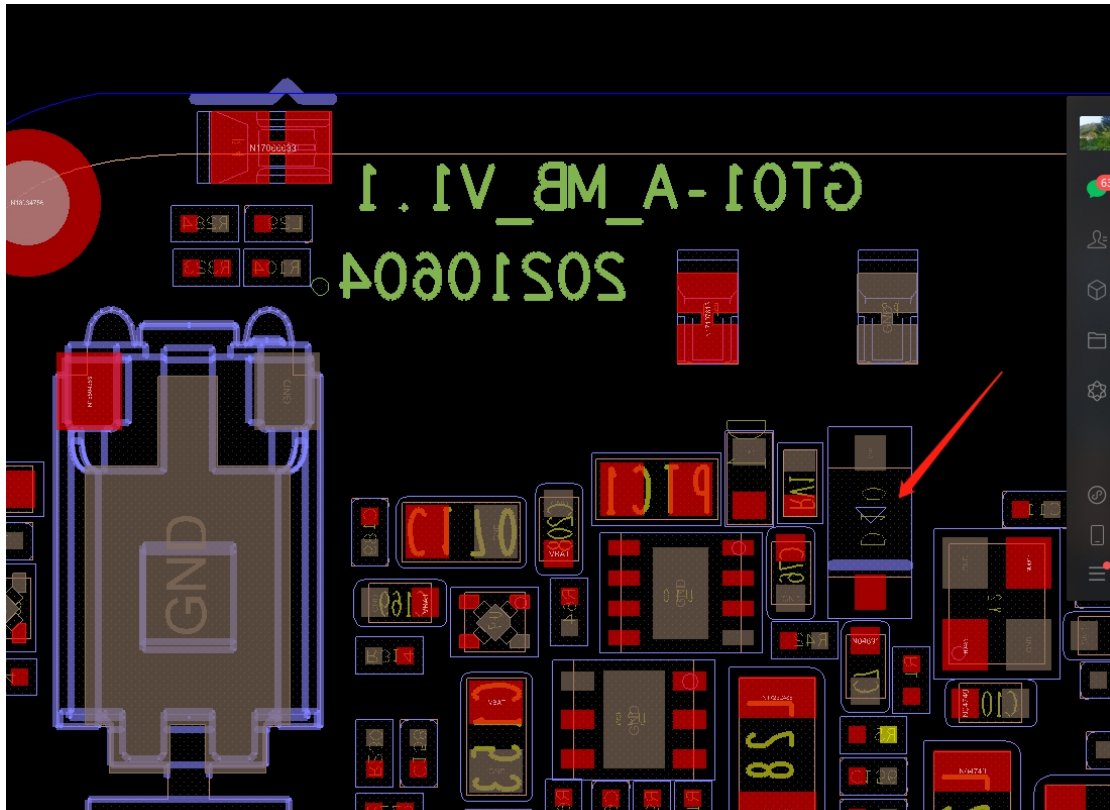
BQ25170 Added R64(left)



Added PTC1 (The function is prevent ESD and surge)



D10,catching diode



The circuit diagram of the previously certified board is without PTC and D10, clamping diodes
 Added resistance R1



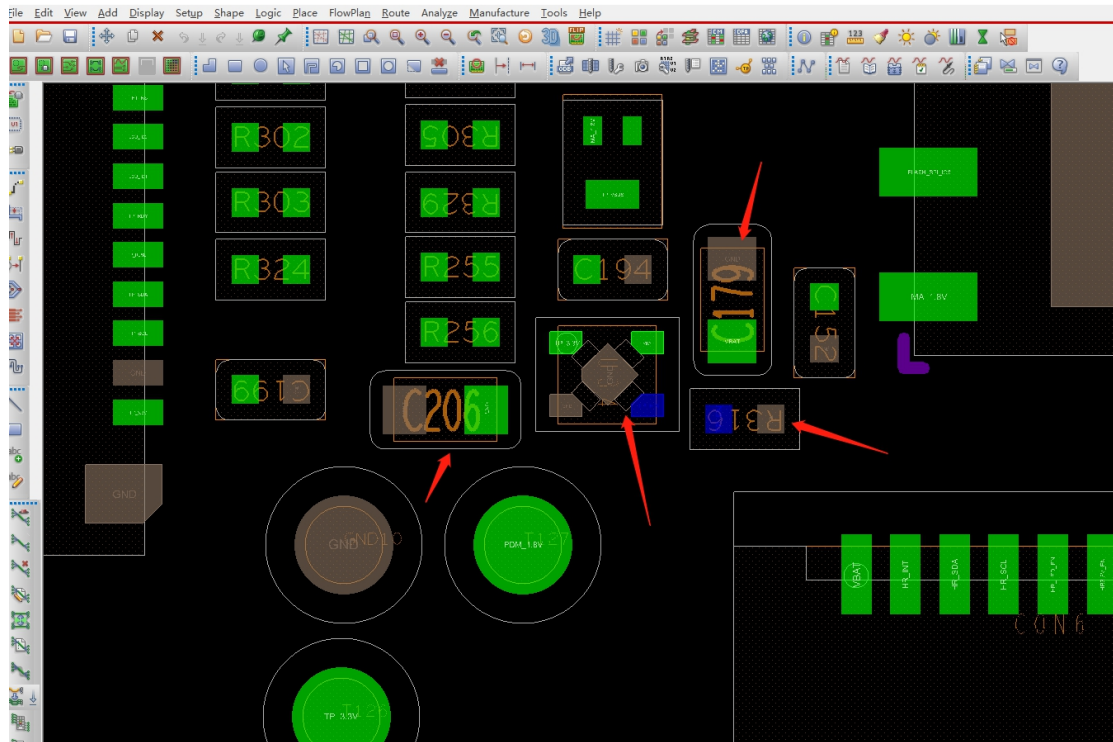
RV1: It's a varistor

D1:It's TVS pipe



The left photo :It has been certification before;
The right photo: BQ25170 Will apply for certification;

C206,R31,C179, and U34 on TOP are newly added

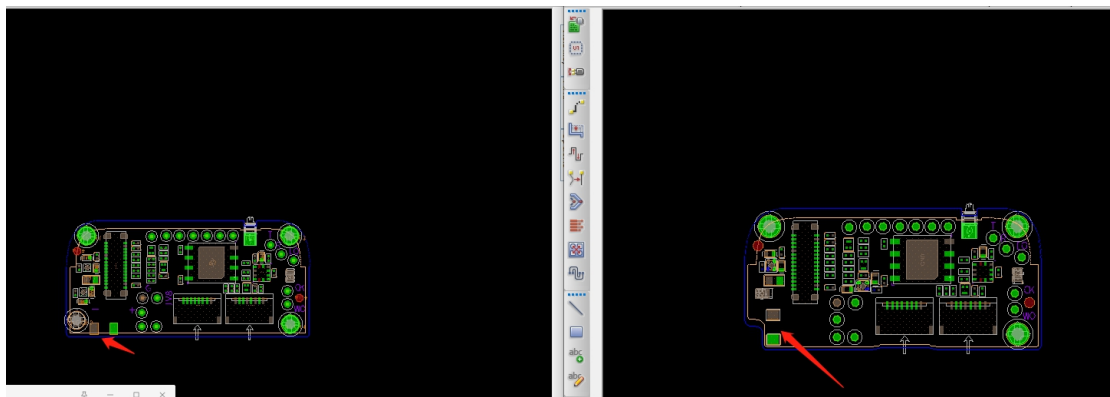


There is a screw hole in the lower left of the left photo

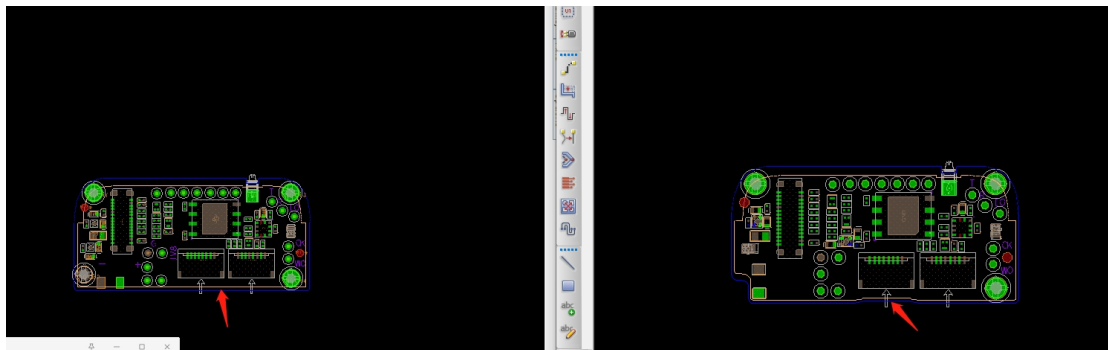
There are no screw holes in the lower left of the right photo

The left photo have not notch in the lower left

The right photo have a notch in the lower left



The left photo battery welding plate is transversely
The left photo battery welding plate is vertical



The arrow on the left photo points to a straight line
The arrow on the right photo points to slightly recessed lines.