



TEST REPORT

of the accredited test laboratory

TÜV Nr.:M/FG-16/139

Applicant: Mikme
Spittelauer Lände 12
Stadtbahnbogen 335
1090 Vienna, Austria

Tested Product: Mikme Microphone blackgold 16GB
M 54-002-03-01

FCC-ID: 2AHFIM540020301

IC-ID: 21134-M540020301

Manufacturer: See applicant

**Output power /
field strength:** 1,8 mW eirp **power supply:** 5 VDC

Frequency range: 2402 - 2480 MHz **Channel separation:** 1 MHz

Standard: FCC: 47 CFR Part 15 (October 1, 2015 edition)
RSS-247 Issue 1, May 2015; including modifications and
clarifications in CB Notice 2015-07

TUV Austria Services GmbH
Test laboratory for EMC

Supervisor of EMC-laboratory:

Ing. Wilhelm Seier

Copy Nbr.: 09

checked by:

Ing. Michael Emminger

A publication of this test report is only permitted literally.
Copying or reproduction of partial sections needs a written permission of
TUV Austria Services GmbH.

The results of this test report only refer to the provided equipment.

LIST OF MEASUREMENTS

The complete list of measurements called for in 47 CFR 15 and RSS-247 is given below.

SUBCLAUSE	PARAMETER TO BE MEASURED	PAGE
	Intentional Radiators	
	Test object data	3
15.247(a)(1) 5.1 (2) (4)	Number of channels and channel spacing	4-5
15.247(a)(1) 5.1 (2)	20 dB Bandwidth	6-8
15.247(b)(1) 5.4 (2)	Maximum Peak RF Power Output (eirp)	9
15.247(a)(1)(iii) 5.1 (4)	Average time of occupancy	10-11
15.247(d) 5.5	Out-of-band Emissions – no conducted measurements	N/A
15.209(a) RSS-Gen	Emissions in restricted bands	12-16
15.207 RSS-Gen 8.8	Conducted Limits	17
15.247(i)	Maximum permissible exposure	17
15.109 ICES-003	Unintentional radiator (USB mode, Bluetooth inactive)	18-19

TEST OBJECT DATA

General EUT Description

This wireless microphone uses Bluetooth technology for communication and control.

2.1033 (c) Technical description

2.1033 (4) Type of emission: Basic datarate: 820KF1D – Channel bandwidth < 1MHz – Channel spacing 1 MHz.

2.1033 (5) Frequency range: 2402 to 2480 MHz (channel center frequencies).

2.1033 (6) Power range and Controls: The maximum peak output power is 1,8 mW and there is no power regulation.

2.1033 (7) Maximum output power rating: 1,8 mW conducted.

2.1033 (8) DC Voltage and Current: 5V DC
maximum current consumption: 200 mA

RSS-135 This standard does not apply to:

- 1.1.(a) a receiver that scans radio frequencies for the purpose of enabling its associated transmitter to avoid transmitting in an occupied frequency but which does not have the capability of decoding the message (e.g. converting it to audio voice) contained in the radio signal

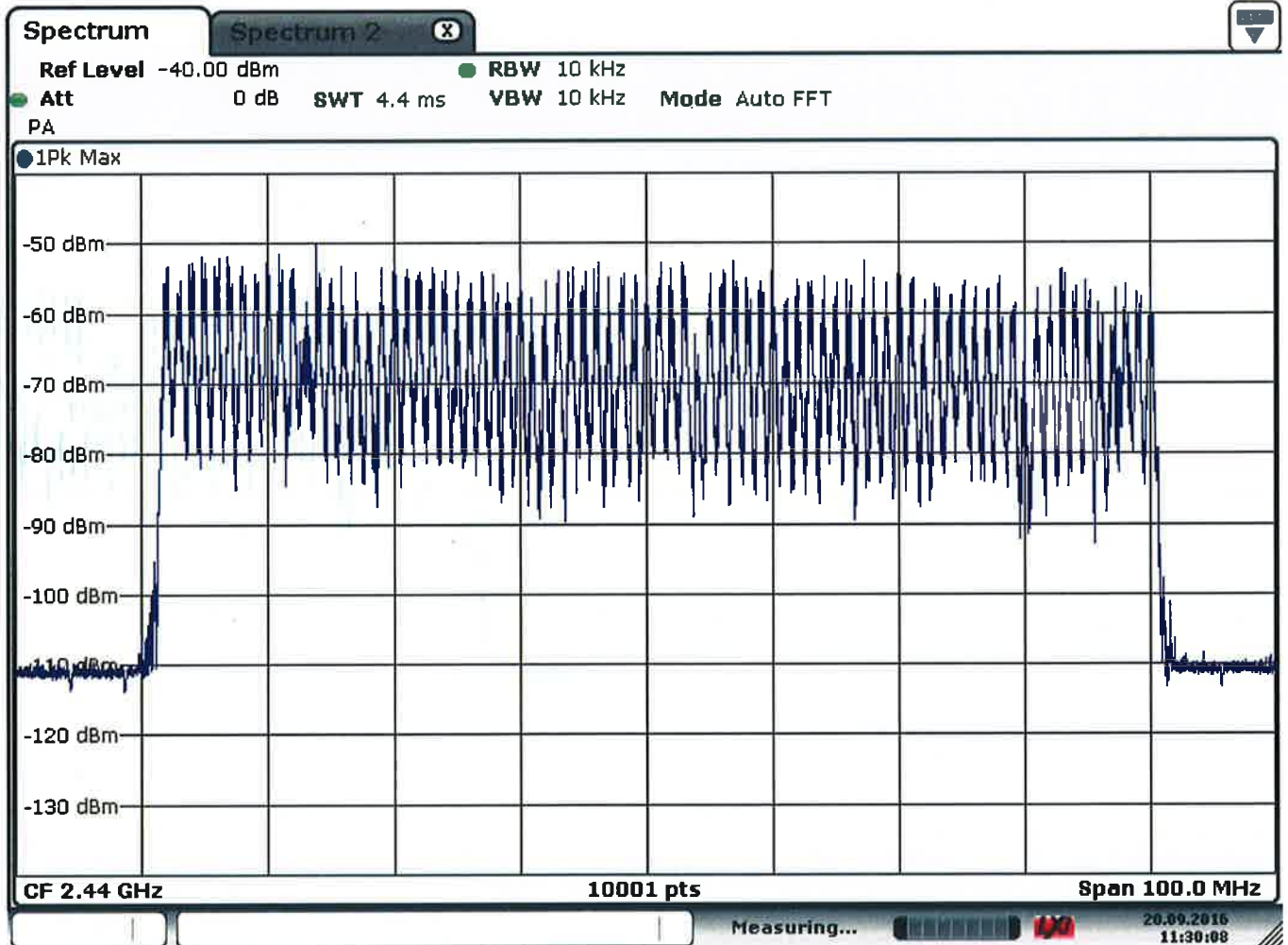
Tests were performed Sept. 19th till 20th 2016.

Number of channels and channel spacing

**§ 15.247 (a) (1)
5.1 (2) (4)**

Radiated Measurement

Rated output power: 1,8 mW



Date: 20.SEP.2016 11:30:08

There are 79 Channels used, starting at 2402 till 2480 each spaced by 1 MHz channel spacing (see next page).

LIMIT SUBCLAUSE 15.247(a) (1) – 5.1(4)

Frequency hopping systems shall have hopping channel carrier frequencies separated by a minimum of 25 kHz or the 20 dB bandwidth of the hopping channel, whichever is greater.

Frequency hopping systems in the 2400–2483.5 MHz band shall use at least 15 channels.

Test Equipment used: EMV-100; EMV-101; EMV-102; EMV-103; EMV-110; EMV-205

Number of channels and channel spacing

**§ 15.247 (a) (1)
5.1 (2) (4)**

Radiated Measurement

Rated output power: 1,8 mW



Date: 20.SEP.2016 11:34:43

There are 79 Channels used, starting at 2402 till 2480 each spaced by 1 MHz channel spacing.

LIMIT SUBCLAUSE 15.247(a) (1) – 5.1(4)

Frequency hopping systems shall have hopping channel carrier frequencies separated by a minimum of 25 kHz or the 20 dB bandwidth of the hopping channel, whichever is greater.

Frequency hopping systems in the 2400–2483.5 MHz band shall use at least 15 channels.

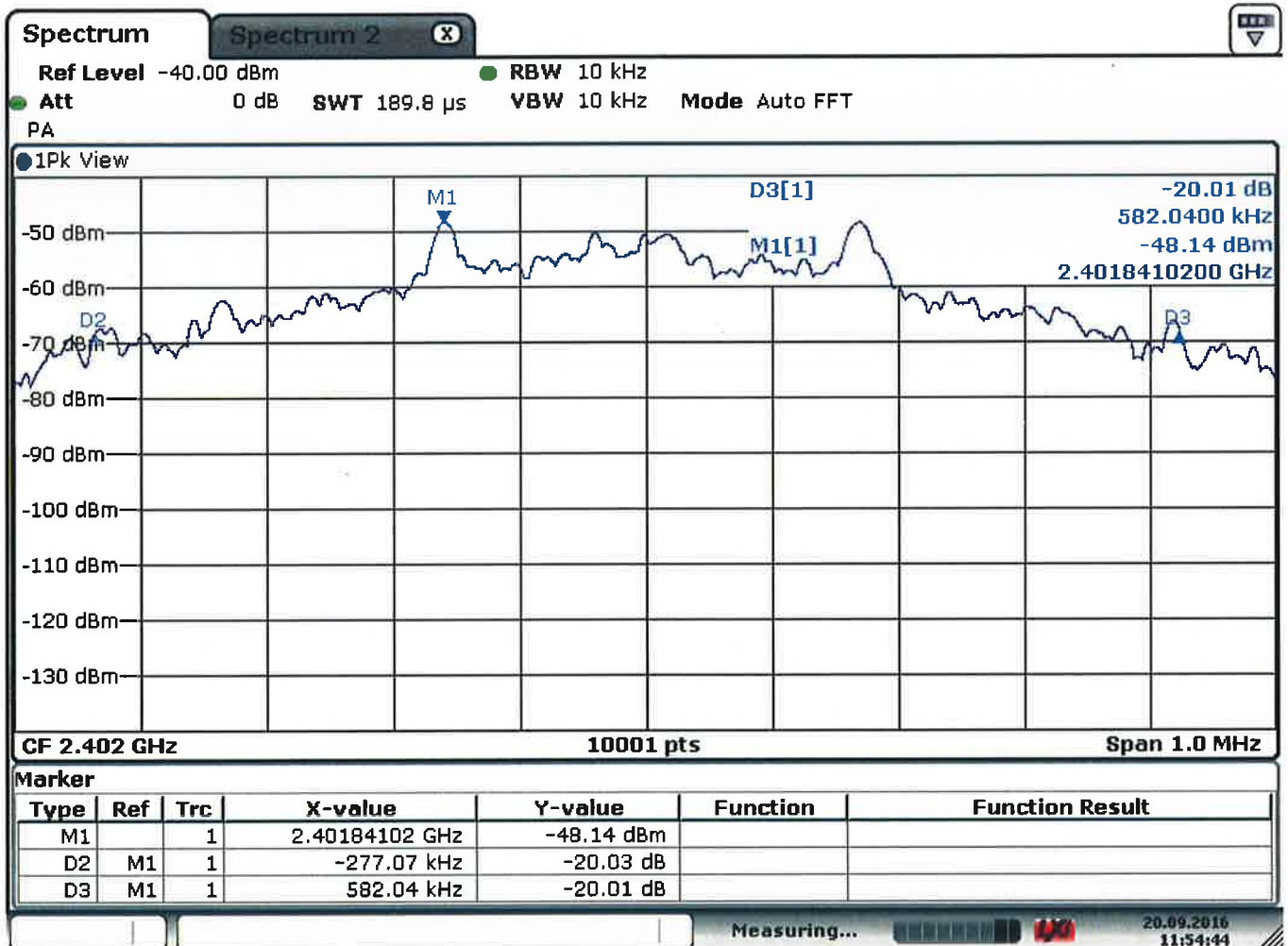
Test Equipment used: EMV-100; EMV-101; EMV-102; EMV-103; EMV-110; EMV-205

20dB Bandwidth

§ 15.247 (a) (1)
5.1 (2)

Radiated Measurement

Rated output power: 1,8 mW 2402 MHz



Date: 20.SEP.2016 11:54:45

20dB Bandwidth: 859,11 kHz

LIMIT SUBCLAUSE 15.247(a) (1) – 5.1(2)

Frequency hopping systems shall have hopping channel carrier frequencies separated by a minimum of 25 kHz or the 20 dB bandwidth of the hopping channel, whichever is greater. Alternatively, frequency hopping systems operating in the 2400-2483.5 MHz band may have hopping channel carrier frequencies that are separated by 25 kHz or two-thirds of the 20 dB bandwidth of the hopping channel, whichever is greater, provided the systems operate with an output power no greater than 125 mW.

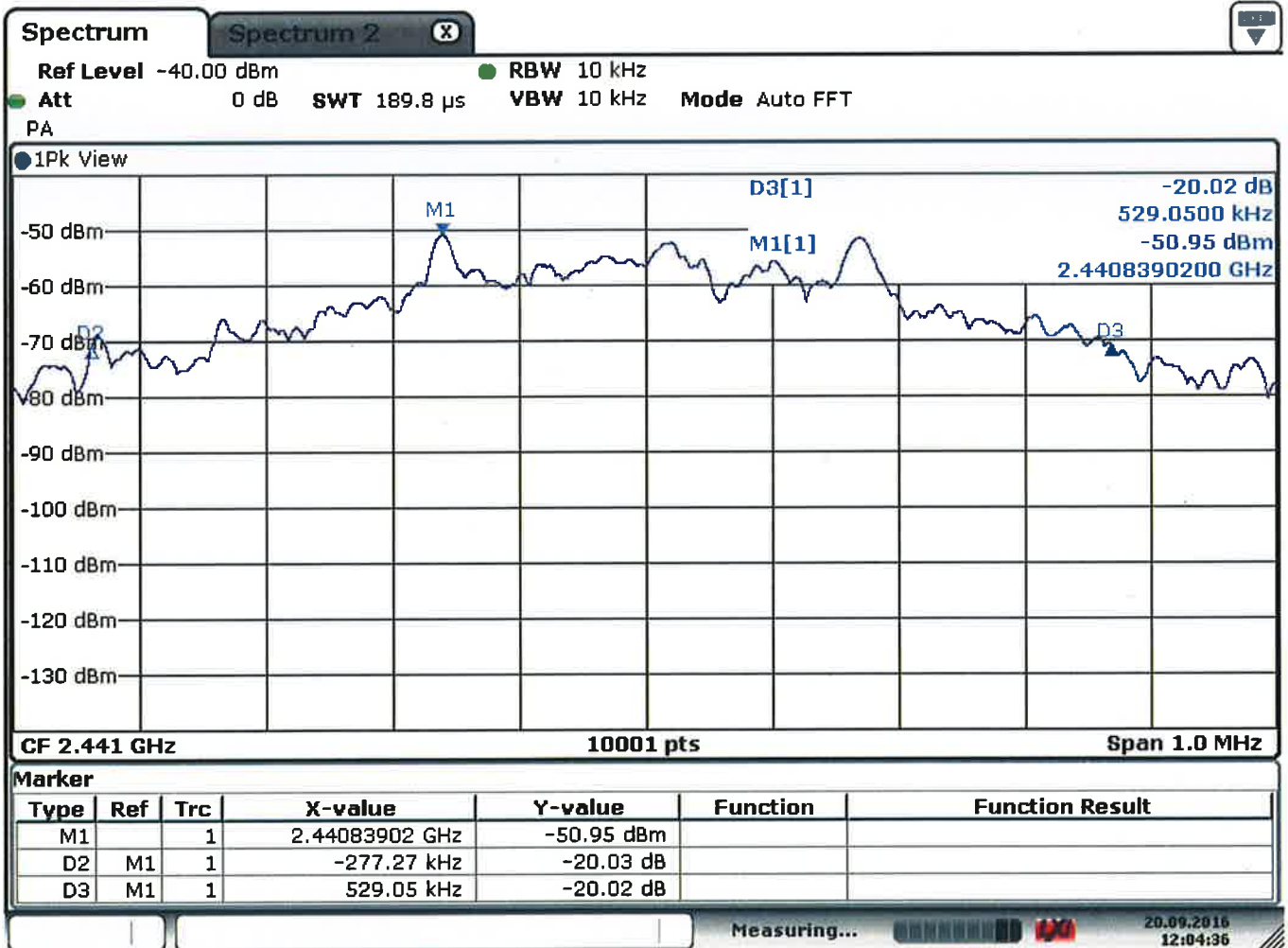
Frequency hopping systems in the 2400–2483.5 MHz band shall use at least 15 channels.

20dB Bandwidth

§ 15.247 (a) (1)
5.1 (2)

Radiated Measurement

Rated output power: 1,8 mW 2441 MHz



Date: 20.SEP.2016 12:04:36

20dB Bandwidth: 806,32 kHz

LIMIT SUBCLAUSE 15.247(a) (1) – 5.1(2)

Frequency hopping systems shall have hopping channel carrier frequencies separated by a minimum of 25 kHz or the 20 dB bandwidth of the hopping channel, whichever is greater. Alternatively, frequency hopping systems operating in the 2400-2483.5 MHz band may have hopping channel carrier frequencies that are separated by 25 kHz or two-thirds of the 20 dB bandwidth of the hopping channel, whichever is greater, provided the systems operate with an output power no greater than 125 mW.

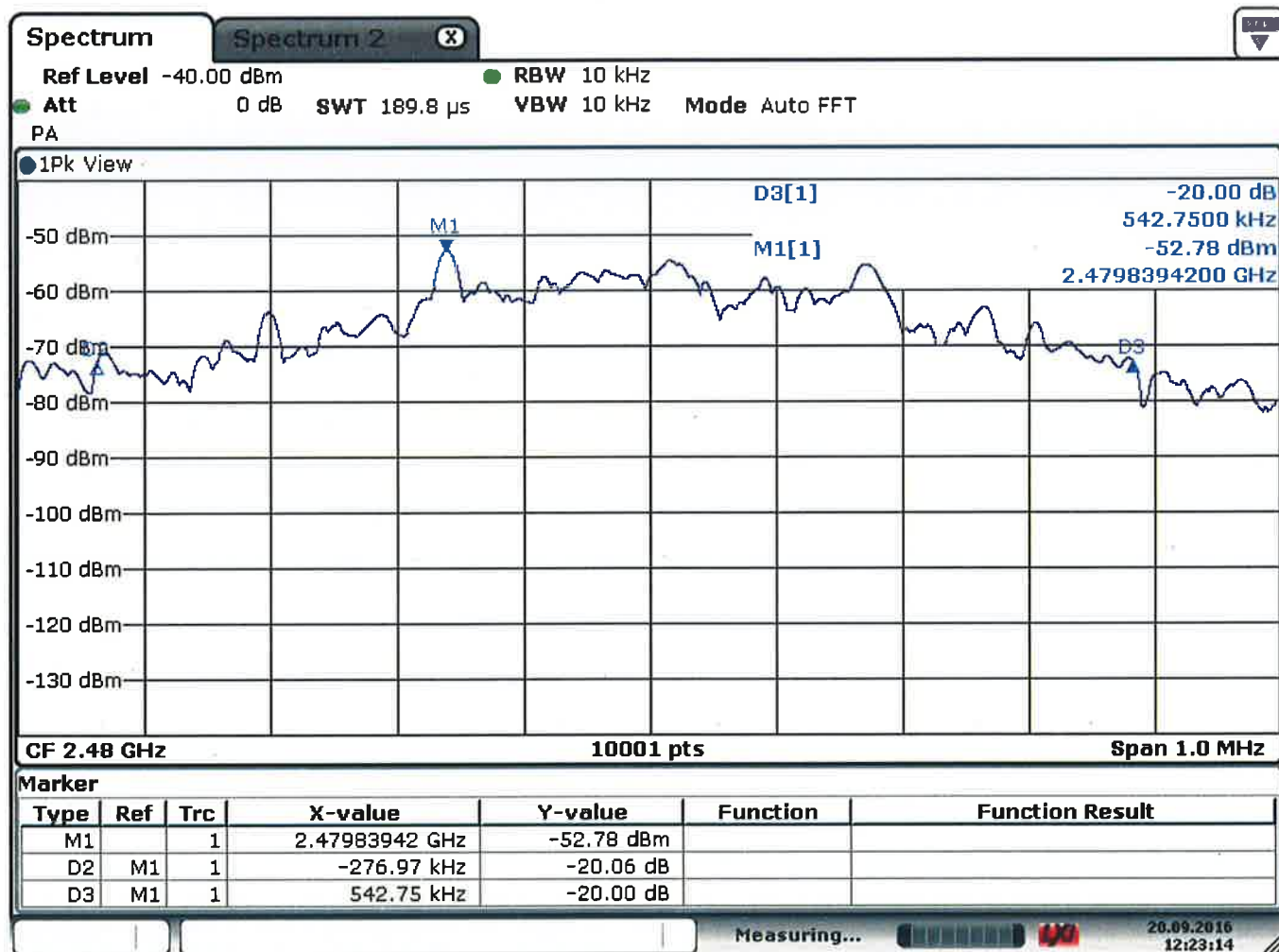
Frequency hopping systems in the 2400–2483.5 MHz band shall use at least 15 channels.

20dB Bandwidth

§ 15.247 (a) (1)
5.1 (2)

Radiated Measurement

Rated output power: 1,8 mW 2480 MHz



Date: 20.SEP.2016 12:23:14

20dB Bandwidth: 819,72 kHz

LIMIT SUBCLAUSE 15.247(a) (1) – 5.1(2)

Frequency hopping systems shall have hopping channel carrier frequencies separated by a minimum of 25 kHz or the 20 dB bandwidth of the hopping channel, whichever is greater. Alternatively, frequency hopping systems operating in the 2400-2483.5 MHz band may have hopping channel carrier frequencies that are separated by 25 kHz or two-thirds of the 20 dB bandwidth of the hopping channel, whichever is greater, provided the systems operate with an output power no greater than 125 mW.

Frequency hopping systems in the 2400–2483.5 MHz band shall use at least 15 channels.

Maximum Peak RF Power Output (EIRP)

**§ 15.247(b)(1)
5.4(2)**

Radiated Measurement

Rated output power: 1,8 mW

Test conditions		Transmitter power (mW)		
		2402 MHz	2441 MHz	2480 MHz
T _{nom} (25)°C	V _{nom} (5) V	1,80	1,29	1,20
Maximum deviation from rated output power under normal test conditions (dB)				
Measurement uncertainty		± 0,75 dB		

LIMIT SUBCLAUSE 15.247(b)(1) – 5.4(2)

Under normal test conditons	1W conducted (4W eirp)
-----------------------------	------------------------

Maximum Antenna Gain: 6dBi, eirp can be calculated by multiplying conducted value with factor 4.

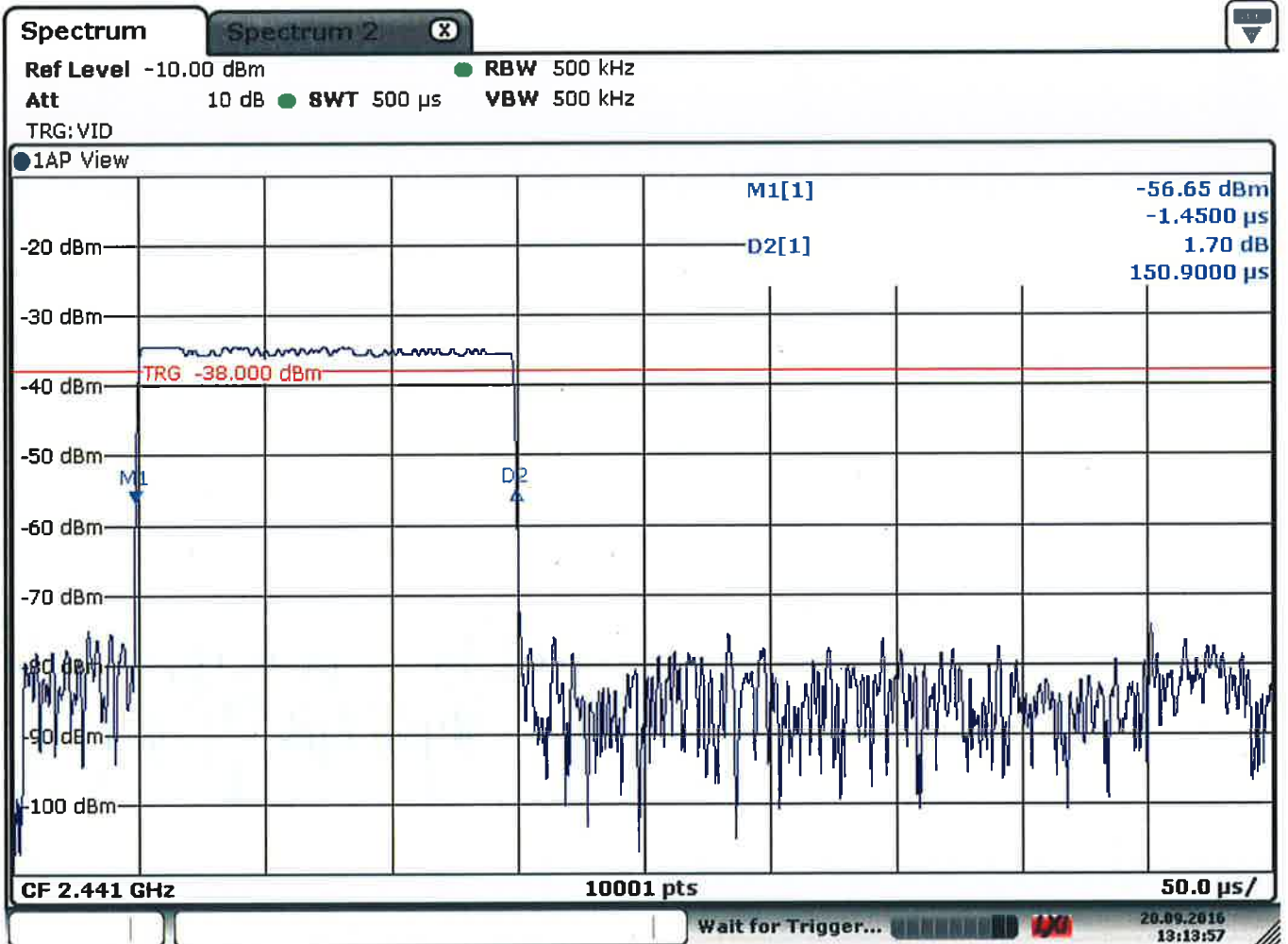
Test Equipment used: EMV-100; EMV-101; EMV-102; EMV-103; EMV-110; EMV-205

Average Time of Occupancy

§ 15.247(a)(1)(iii)
5.1(4)

Radiated Measurement

Rated output power: 1,8 mW 2441 MHz



Date: 20.SEP.2016 13:13:57

The dwell time is constant 151 μs.

LIMIT SUBCLAUSE 15.247(a)(1)(iii) – 5.1(4)

The average time of occupancy on any channel shall not be greater than 0.4 seconds within a period of 0.4 seconds multiplied by the number of hopping channels employed.

Test Equipment used: EMV-100; EMV-101; EMV-102; EMV-103; EMV-110; EMV-205

Average Time of Occupancy

**§ 15.247(a)(1)(iii)
5.1(4)**

Radiated Measurement

Rated output power: 1,8 mW

	Channel 0 (2402 MHz)	Channel 39 (2441 MHz)	Channel 78 (2480 MHz)
Observed time period	79 times 0,4 Seconds = 31,6 seconds		
Time of each individual transmission	0,151 ms	0,151 ms	0,151 ms
Observed number of transmissions	17	14	11
Average time of occupancy	2,567 ms	2,114 ms	1,661 ms

LIMIT SUBCLAUSE 15.247(a)(1)(iii) – 5.1(4)

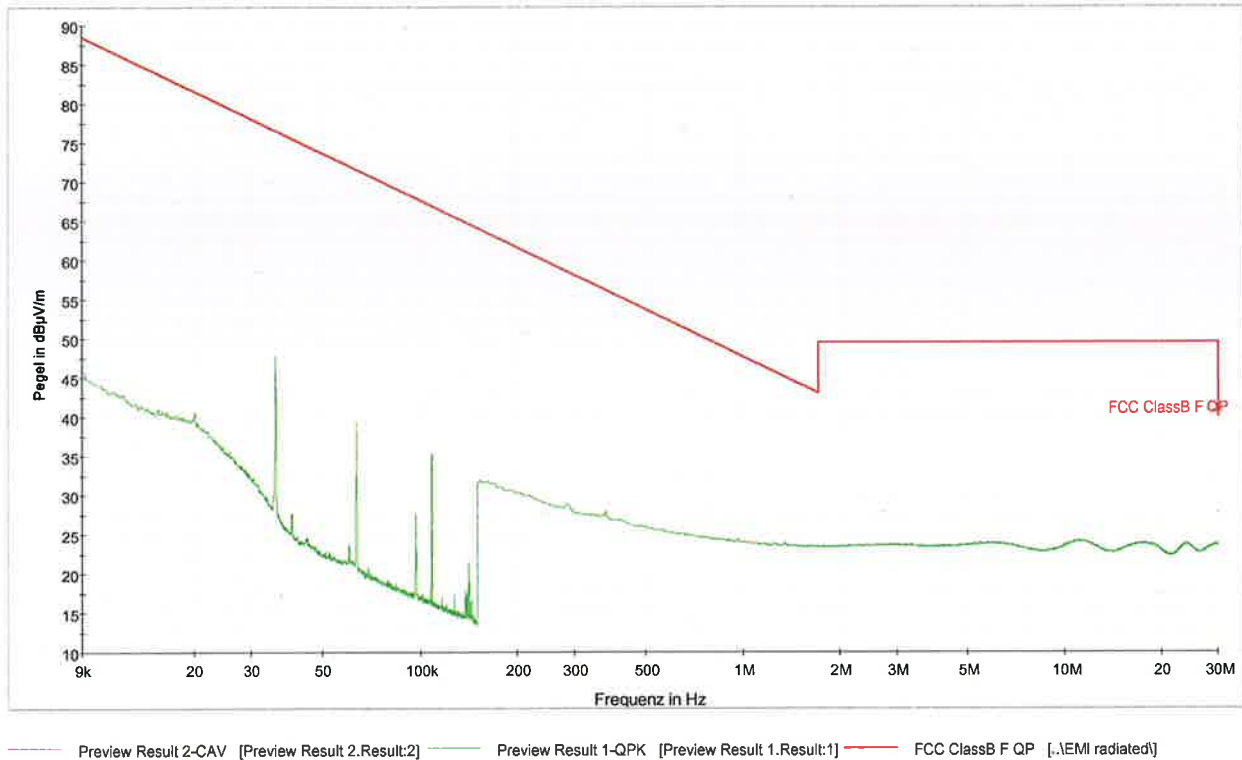
The average time of occupancy on any channel shall not be greater than 0.4 seconds within a period of 0.4 seconds multiplied by the number of hopping channels employed.

Test Equipment used: EMV-100; EMV-101; EMV-102; EMV-103; EMV-110; EMV-205

Emissions in restricted bands
Emissions falling within restricted frequency bands

§ 15.209(a)
RSS-Gen

Mode: Bluetooth – Frequency hopping active



Worst case emission: 47,9 dBµV/m @ 32 kHz

Remark: As the highest spurious conducted emission was measured as to be -55 dB below the fundamental, all radiated measurements (except Band edges) were made with RF connector terminated with 50 ohm load.

LIMIT SUBCLAUSE 15.209(a) – RSS-Gen

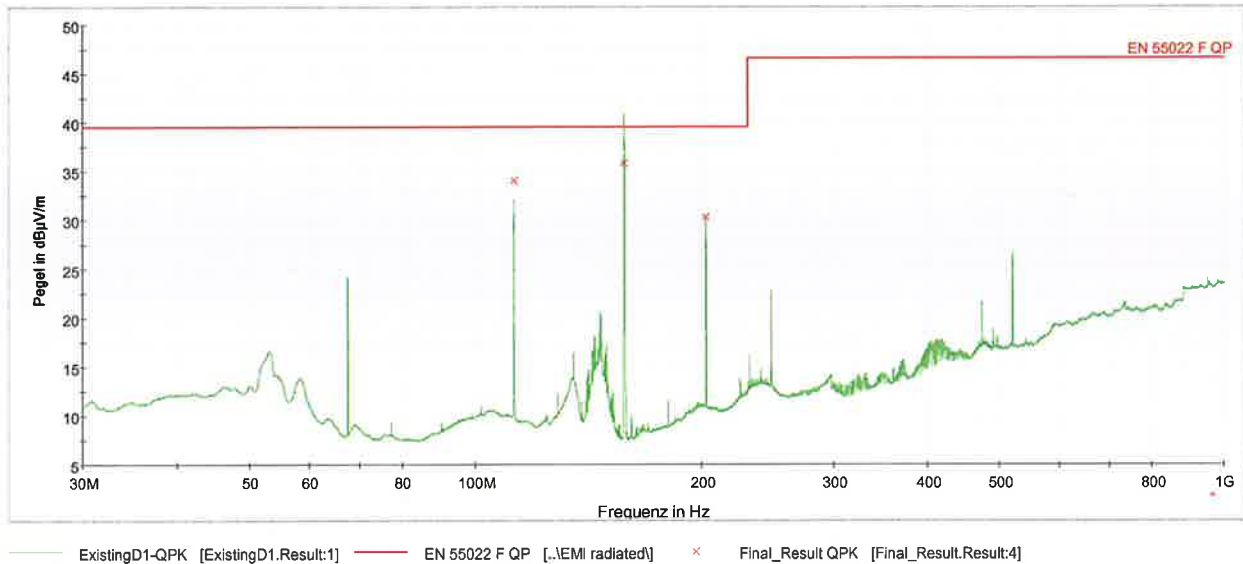
Frequency (MHz)	Field strength (microvolts/meter)	Measurement distance (meters)
0.009-0.490	2400/F(kHz)	300
0.490-1.705	24000/F(kHz)	30
1.705-30.0	30	30
30-88	100**	3
88-216	150**	3
216-960	200**	3
Above 960	500	3

Test Equipment used: EMV-100; EMV-101; EMV-102; EMV-103; EMV-105; EMV-200; NT-122

Emissions in restricted bands
Emissions falling within restricted frequency bands

§ 15.209(a)
RSS-Gen

Mode: Bluetooth – Frequency hopping active



Worst case emission: 35,9 dBµV/m @ 157,5 MHz

LIMIT SUBCLAUSE 15.209(a) – RSS-Gen

Frequency (MHz)	Field strength (microvolts/meter)	Measurement distance (meters)
0.009-0.490	2400/F(kHz)	300
0.490-1.705	24000/F(kHz)	30
1.705-30.0	30	30
30-88	100**	3
88-216	150**	3
216-960	200**	3
Above 960	500	3

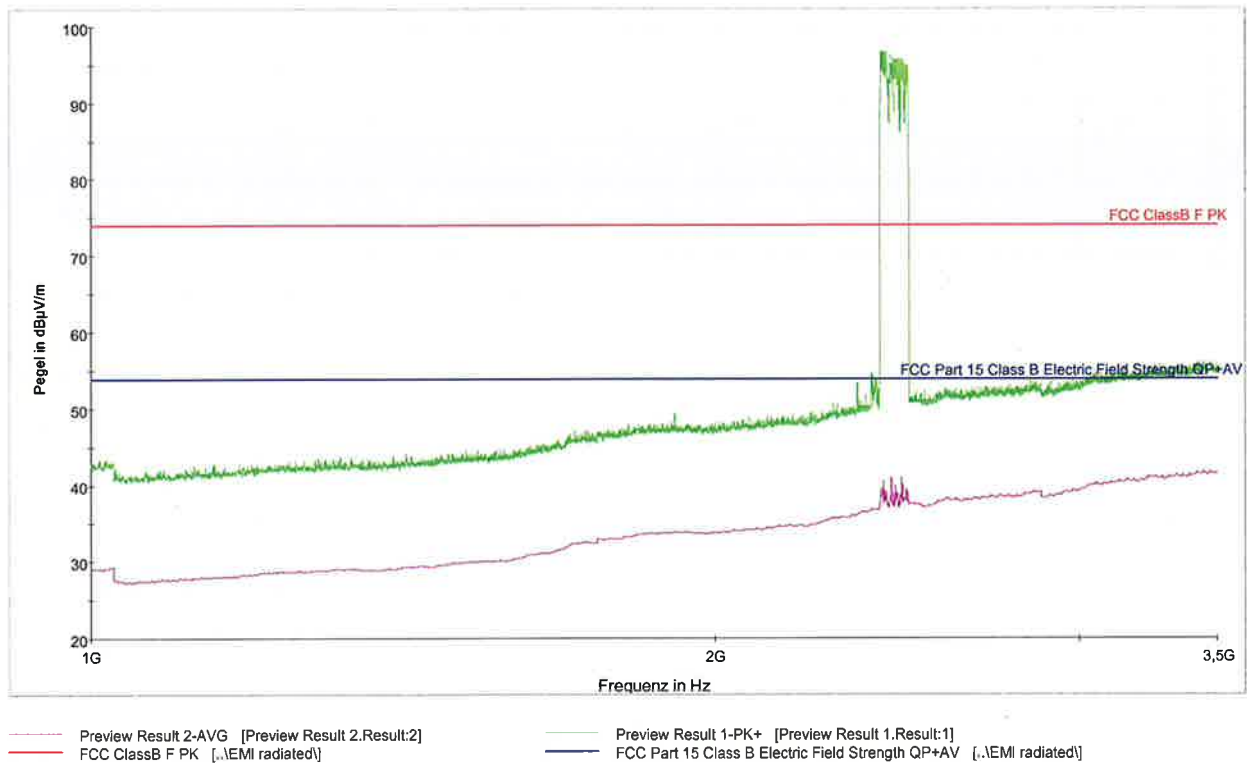
Test Equipment used: EMV-100; EMV-101; EMV-102; EMV-103; EMV-105; EMV-110; EMV-112; EMV-200

Emissions in restricted bands
Emissions falling within restricted frequency bands

§ 15.209(a)
RSS-Gen

Measurement radiated with Peak-Detector (green line) and Average detector (magenta line):

Mode: Bluetooth – Frequency hopping active



Worst case emission: 42,9 dBµV/m @ 3500 MHz

LIMIT SUBCLAUSE 15.209(a) – RSS-Gen

Frequency (MHz)	Field strength (microvolts/meter)	Measurement distance (meters)
0.009-0.490	2400/F(kHz)	300
0.490-1.705	24000/F(kHz)	30
1.705-30.0	30	30
30-88	100**	3
88-216	150**	3
216-960	200**	3
Above 960	500	3

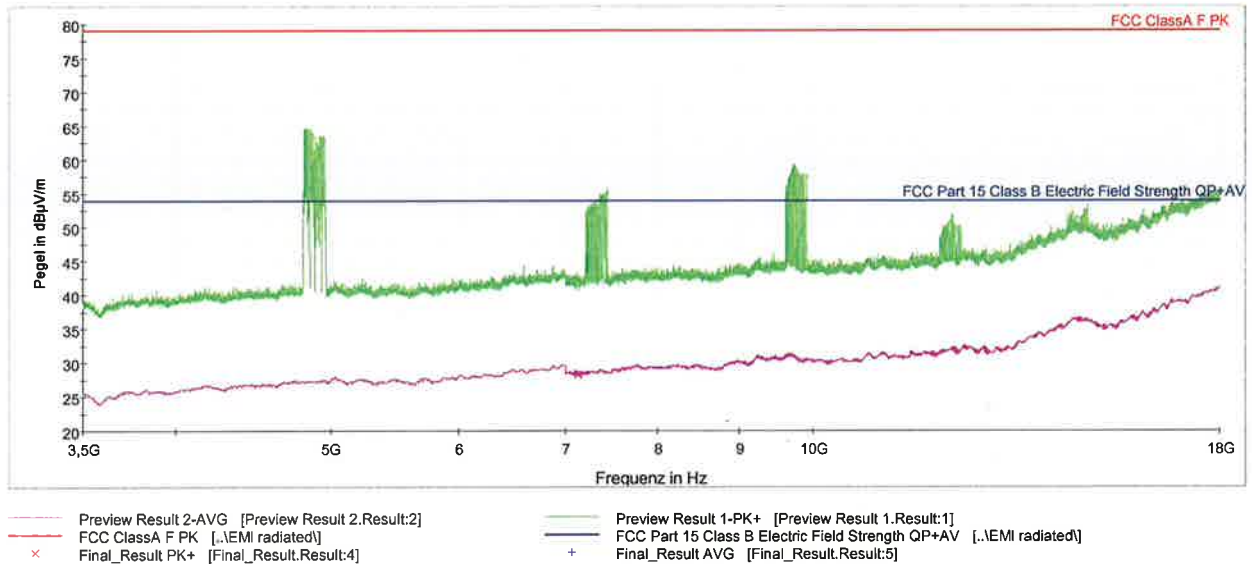
Test Equipment used: EMV-100; EMV-101; EMV-102; EMV-103; EMV-105; EMV-110; EMV-111; EMV-112; EMV-114; EMV-200; NT-122; NT-126; NT-416

Emissions in restricted bands
Emissions falling within restricted frequency bands

§ 15.209(a)
RSS-Gen

Measurement radiated with Peak-Detector (green line) and Average detector (magenta line):

Mode: Bluetooth – Frequency hopping active



Worst case emission: 41,1 dBµV/m @ 18 GHz

Remark: Although the measurement above ends at 18 GHz, all measurements were performed up to the tenth harmonics of the transmitter frequency.

LIMIT SUBCLAUSE 15.209(a) – RSS-Gen

Frequency (MHz)	Field strength (microvolts/meter)	Measurement distance (meters)
0.009-0.490	2400/F(kHz)	300
0.490-1.705	24000/F(kHz)	30
1.705-30.0	30	30
30-88	100**	3
88-216	150**	3
216-960	200**	3
Above 960	500	3

Test Equipment used: EMV-100; EMV-101; EMV-102; EMV-103; EMV-105; EMV-110; EMV-111; EMV-112; EMV-114; EMV-200; NT-122; NT-126; NT-416

Emissions in restricted bands
Emissions falling within restricted frequency bands

§ 15.209(a)
RSS-Gen

As the average value is below the applicable limit at the fundamental, no bandedge measurement was performed.

LIMIT **SUBCLAUSE 15.209(a) – RSS-Gen**

Frequency (MHz)	Field strength (microvolts/meter)	Measurement distance (meters)
0.009-0.490	2400/F(kHz)	300
0.490-1.705	24000/F(kHz)	30
1.705-30.0	30	30
30-88	100**	3
88-216	150**	3
216-960	200**	3
Above 960	500	3

Test Equipment used: N/A

Conducted Limits

**§ 15.207
RSS-Gen 8.8**

As the device is shut off during charging, no conducted measurements have been performed.

LIMIT SUBCLAUSE 15.207(a) – RSS-Gen 8.8

Frequency of emission (MHz)	Conducted limit (dBµV)	
	Quasi-peak	Average
0.15-0.5	66 to 56*	56 to 46*
0.5-5	56	46
5-30	60	50

*Decreases with the logarithm of the frequency.

Test Equipment used: N/A

Maximum permissible Exposure

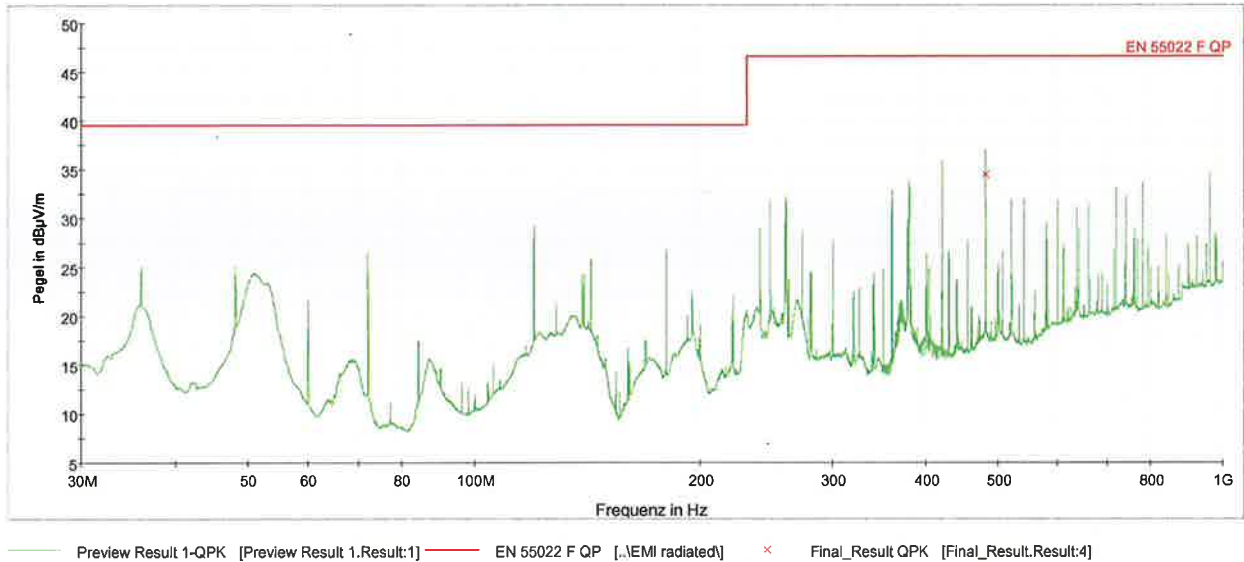
§ 15.247(i)

This kind of radio equipment is categorically excluded from routine environmental evaluation.

Unintentional radiator

**§ 15.109(a)
ICES-003**

Mode: USB connection



Worst case emission: 34,5 dBµV/m @ 480,03 MHz

LIMIT SUBCLAUSE 15.209(a) – RSS-Gen

Frequency (MHz)	Field strength (microvolts/meter)	Measurement distance (meters)
0.009-0.490	2400/F(kHz)	300
0.490-1.705	24000/F(kHz)	30
1.705-30.0	30	30
30-88	100**	3
88-216	150**	3
216-960	200**	3
Above 960	500	3

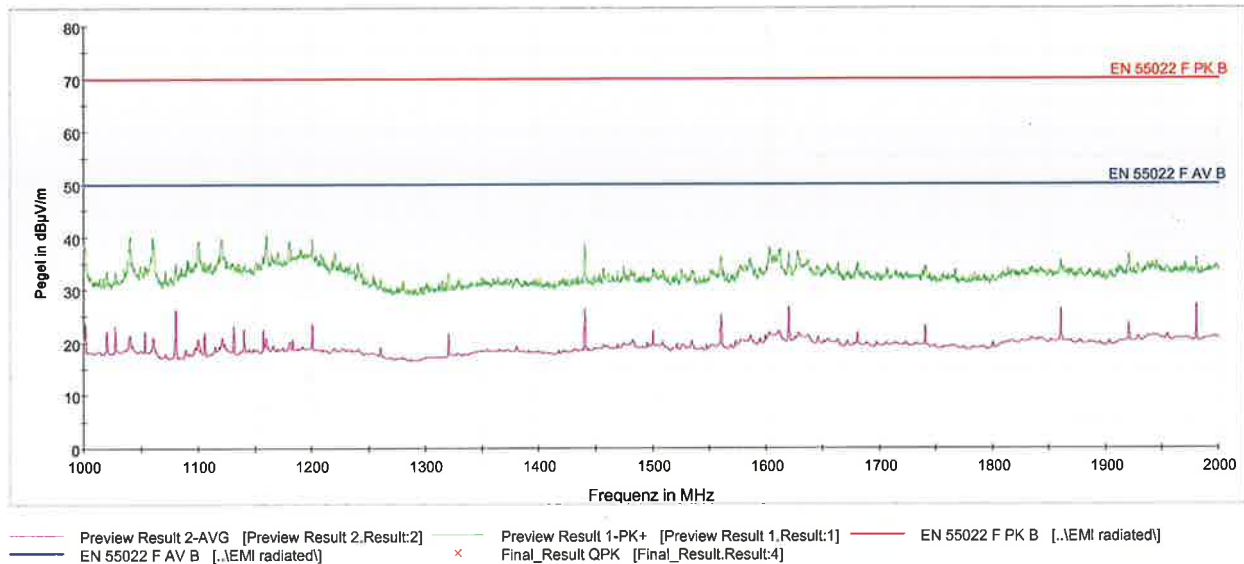
Test Equipment used: EMV-100; EMV-101; EMV-102; EMV-103; EMV-105; EMV-110; EMV-112; EMV-200

Emissions in restricted bands
Emissions falling within restricted frequency bands

§ 15.209(a)
RSS-Gen

Measurement radiated with Peak-Detector (green line) and Average detector (magenta line):

Mode: Bluetooth – Frequency hopping active



Worst case emission: 26,9 dBµV/m @ 1980 MHz

LIMIT SUBCLAUSE 15.209(a) – RSS-Gen

Frequency (MHz)	Field strength (microvolts/meter)	Measurement distance (meters)
0.009-0.490	2400/F(kHz)	300
0.490-1.705	24000/F(kHz)	30
1.705-30.0	30	30
30-88	100**	3
88-216	150**	3
216-960	200**	3
Above 960	500	3

Test Equipment used: EMV-100; EMV-101; EMV-102; EMV-103; EMV-105; EMV-110; EMV-111; EMV-200

Appendix 1

Test equipment used

<input type="checkbox"/>	Anechoic Chamber with 3m measurement distance	NT-100	<input type="checkbox"/>	Power quality analyzer Fluke 1760 (complete set)	NT-160 - NT-173
<input type="checkbox"/>	Stripline according to ISO 11452-5	NT-108	<input type="checkbox"/>	Spectrum analyzer – FSP7 9 kHz – 7 GHz	NT-200
<input type="checkbox"/>	MA4000 - Antenna mast 1 - 4 m height	NT-110/1	<input type="checkbox"/>	ESCI - Test receiver 9 kHz - 7 GHz	NT-203/1
<input type="checkbox"/>	DS - Turntable 0 - 400 ° Azimuth	NT-111/1	<input type="checkbox"/>	ESI26 – Test receiver 20 Hz – 26,5 GHz	NT-207
<input type="checkbox"/>	CO3000 Controller Mast+Turntable	NT-112/1	<input type="checkbox"/>	Digital Radio Tester CTS55	NT-208
<input type="checkbox"/>	HUF-Z3 - Log. Per. Antenna 200 - 1000 MHz	NT-121	<input type="checkbox"/>	Noise-gen., ITU-R 559-2 20 Hz – 20 kHz	NT-209
<input type="checkbox"/>	HFH-Z2 - Loop Antenna 9 kHz - 30 MHz	NT-122	<input type="checkbox"/>	CMTA - Radiocommunication analyzer ; 0,1 - 1000 MHz	NT-210
<input type="checkbox"/>	HFH-Z6 - Rod Antenna 9 kHz - 30 MHz	NT-123	<input type="checkbox"/>	3271 - Spectrum analyzer 100 Hz - 26,5 GHz	NT-211
<input type="checkbox"/>	3121C - Dipole Antenna 28 - 1000 MHz	NT-124	<input type="checkbox"/>	Digital Radio Tester Aeroflex 3920	NT-212/1
<input type="checkbox"/>	3115 - Horn Antenna 1 - 18 GHz (immunity)	NT-125	<input type="checkbox"/>	Mixer M28HW 26,5 GHz - 40 GHz	NT-214
<input type="checkbox"/>	3116 - Horn Antenna 18 - 40 GHz	NT-126	<input type="checkbox"/>	RubiSource T&M Timing reference	NT-216
<input type="checkbox"/>	SAS-200/543 - Bicon. Antenna 20 MHz - 300 MHz	NT-127	<input type="checkbox"/>	Radiocommunication analyzer SWR 1180 MD	NT-217
<input type="checkbox"/>	AT-1080 - Log. Per. Antenna 80 - 1000 MHz	NT-128	<input type="checkbox"/>	Mixer M19HWD 40 GHz – 60 GHz	NT-218
<input type="checkbox"/>	HK-116 - bicon. Antenna 20 MHz - 300 MHz	NT-129	<input type="checkbox"/>	Mixer M12HWD 60 GHz – 90 GHz	NT-219
<input type="checkbox"/>	HK-116 - bicon. Antenna 20 MHz - 300 MHz	NT-130	<input type="checkbox"/>	DSO9104 Digital scope	NT-220/1
<input type="checkbox"/>	3146 - Log. Per. Antenna 200 – 1000 MHz	NT-131	<input type="checkbox"/>	TPS 2014 Digital scope	NT-222
<input type="checkbox"/>	VULB 9163 Trilog Antenna 30 – 3000 MHz	NT-131/1	<input type="checkbox"/>	Artificial Ear according to IEC 60318	NT-224
<input type="checkbox"/>	Loop Antenna H-Field	NT-132	<input type="checkbox"/>	1 kHz Sound calibrator	NT-225
<input type="checkbox"/>	Horn Antenna 500 MHz - 2900 MHz	NT-133	<input type="checkbox"/>	B10 - Harmonics and flicker analyzer	NT-232
<input type="checkbox"/>	Horn Antenna 500 MHz - 6000 MHz	NT-133/1	<input type="checkbox"/>	SRM-3000 Spectrum analyzer	NT-233
<input type="checkbox"/>	Log. per. Antenna 800 MHz - 2500 MHz	NT-134	<input type="checkbox"/>	SRM-3006 Spectrum analyzer	NT-233/1a
<input type="checkbox"/>	Log. per. Antenna 800 MHz - 2500 MHz	NT-135	<input type="checkbox"/>	E-field probe SRM 75 MHz – 3 GHz	NT-234
<input type="checkbox"/>	BiConiLog Antenna 26 MHz – 2000 MHz	NT-137	<input type="checkbox"/>	Field Meter NBM-500 incl. E- and H-Field probes	NT-240a-d
<input type="checkbox"/>	Conical Dipol Antenna PCD8250	NT-138	<input type="checkbox"/>	Hall-Teslameter ETM-1	NT-241
<input type="checkbox"/>	HF 906 - Horn Antenna 1 - 18 GHz (emission)	NT-139	<input type="checkbox"/>	EFA-3 H-field- / E-field probe	NT-243
<input type="checkbox"/>	HZ-1 Antenna tripod	NT-150	<input type="checkbox"/>	Field Meter EMR-200 100 kHz – 3 GHz	NT-244
<input type="checkbox"/>	BN 1500 Antenna tripod	NT-151	<input type="checkbox"/>	E-field probe 100 kHz – 3 GHz	NT-245
<input type="checkbox"/>	Ant. tripod for EN61000-4-3 Model TP1000A	NT-156	<input type="checkbox"/>	H-field probe 300 kHz – 30 MHz	NT-246


Division:
Industry & Energy

Department: FG

Test report number:
M/FG-16/139

Page: 1 of 4

Date: 22.12.2016

Checked by: 

Appendix 1 (continued)

Test equipment used

<input type="checkbox"/>	E-field probe 3 MHz – 18 GHz	NT-247	<input type="checkbox"/>	Oscillatory Wave Simulator incl. Coupling networks	NT-328a+b+c
<input type="checkbox"/>	H-field probe 27 MHz – 1 GHz	NT-248	<input type="checkbox"/>	BTA-250 - RF-Amplifier 9 kHz - 220 MHz / 250 W	NT-330
<input type="checkbox"/>	ELT-400 1 Hz – 400 kHz	NT-249	<input type="checkbox"/>	T82-50 RF-Amplifier 2 GHz – 8 GHz	NT-331
<input type="checkbox"/>	MDS 21 - Absorbing clamp 30 - 1000 MHz	NT-250	<input type="checkbox"/>	500W1000M7 - RF-Amplifier 80 - 1000 MHz / 500 W	NT-332
<input type="checkbox"/>	FCC-203I EM Injection clamp	NT-251	<input type="checkbox"/>	AS0102-65R - RF-Amplifier 1 GHz - 2 GHz	NT-333
<input type="checkbox"/>	FCC-203I-DCN Ferrite decoupling network	NT-252	<input type="checkbox"/>	APA01 – RF-Amplifier 0,5 GHz – 2,5 GHz	NT-334
<input type="checkbox"/>	PR50 Current Probe	NT-253	<input type="checkbox"/>	Preamplifier 1 GHz - 4 GHz	NT-335
<input type="checkbox"/>	i310s Current Probe	NT-254/1	<input type="checkbox"/>	Preamplifier for GPS MKU 152 A	NT-336
<input type="checkbox"/>	Fluke 87 V True RMS Multimeter	NT-260	<input type="checkbox"/>	Preamplifier 100 MHz – 23 GHz	NT-337
<input type="checkbox"/>	Model 2000 Digital Multimeter	NT-261	<input type="checkbox"/>	DC Block 10 MHz – 18 GHz Model 8048	NT-338
<input type="checkbox"/>	Fluke 87 V Digital Multimeter	NT-262/1	<input type="checkbox"/>	2-97201 Electronic load	NT-341
<input type="checkbox"/>	ESH2-Z5-U1 Artificial mains network 4x25A	NT-300	<input type="checkbox"/>	TSX3510P - Power supply 0-30 V / 0 - 10 A	NT-344
<input type="checkbox"/>	ESH3-Z5-U1 Artificial mains network 2x10A	NT-301	<input type="checkbox"/>	TSX3510P - Power supply 0-30 V / 0 - 10 A	NT-345
<input type="checkbox"/>	ESH3-Z6-U1 Artificial mains network 1x100A	NT-302	<input type="checkbox"/>	VDS 200 Mobil-impuls-generator	NT-350
<input type="checkbox"/>	ESH3-Z6-U1 Artificial mains network 1x100A	NT-302a	<input type="checkbox"/>	LD 200 Mobil-impuls-generator	NT-351
<input type="checkbox"/>	PHE 4500/B Power amplifier	NT-304	<input type="checkbox"/>	MPG 200 Mobil-Impuls-Generators	NT-352
<input type="checkbox"/>	EZ10 T-Artificial Network	NT-305	<input type="checkbox"/>	EFT 200 Mobil-impuls-generator	NT-353
<input type="checkbox"/>	SMG - Signal generator 0,1 - 1000 MHz	NT-310	<input type="checkbox"/>	AN 200 S1 Artificial Network	NT-354
<input type="checkbox"/>	SMA100A - Signal generator 9 kHz - 6 GHz	NT-310/1	<input type="checkbox"/>	FP-EFT 32M 3 ph. Coupling filter (Burst)	NT-400/1
<input type="checkbox"/>	RefRad Reference generator	NT-312	<input type="checkbox"/>	PHE 4500 - Mains impedance network	NT-401
<input type="checkbox"/>	SMP 02 Signal generator 10 MHz - 20 GHz	NT-313	<input type="checkbox"/>	IP 6.2 Coupling filter for data lines (Surge)	NT-403
<input type="checkbox"/>	40 MHz Arbitrary Generator TGA1241	NT-315	<input type="checkbox"/>	TK 9421 High Power Volt. Probe 150 kHz - 30 MHz	NT-409
<input type="checkbox"/>	Artificial mains network NSLK 8127-PLC	NT-316	<input type="checkbox"/>	ESH2-Z3 - Probe 9 kHz - 30 MHz	NT-410
<input type="checkbox"/>	PEFT - Burst generator up to 4 kV	NT-320	<input type="checkbox"/>	IP 4 - Capacitive clamp (Burst)	NT-411
<input type="checkbox"/>	ESD 30 System up to 25 kV	NT-321	<input type="checkbox"/>	Highpass-Filter 100 MHz – 3 GHz	NT-412
<input type="checkbox"/>	PSURGE 4.1 Surge generator	NT-324	<input type="checkbox"/>	Highpass-Filter 600 MHz – 4 GHz	NT-413
<input type="checkbox"/>	IMU4000 Immunity test system	NT-325/1	<input type="checkbox"/>	Highpass-Filter 1250 MHz – 4 GHz	NT-414
<input type="checkbox"/>	VCS 500-M6 Surge-Generator	NT-326	<input type="checkbox"/>	Highpass-Filter 1800 MHz – 16 GHz	NT-415


Division:
Industry & Energy

Department: FG

Test report number:
M/FG-16/139

Page: 2 of 4

Date: 22.12.2016

Checked by: 

Appendix 1 (continued)

Test equipment used

<input type="checkbox"/>	Highpass-Filter 3500 MHz – 18 GHz	NT-416	<input type="checkbox"/>	FCC-801-S25 Coupling decoupling network	NT-462
<input type="checkbox"/>	RF-Attenuator 10 dB DC – 18 GHz / 50 W	NT-417	<input type="checkbox"/>	FCC-801-T4 Coupling decoupling network	NT-463
<input type="checkbox"/>	RF-Attenuator 6 dB DC – 18 GHz / 50 W	NT-418	<input type="checkbox"/>	FCC-801-C1 Coupling decoupling network	NT-464
<input type="checkbox"/>	RF-Attenuator 3 dB DC – 18 GHz / 50 W	NT-419	<input type="checkbox"/>	SW 9605 - Current probe 150 kHz – 30 MHz	NT-465/1
<input type="checkbox"/>	RF-Attenuator 20 dB DC - 1000 MHz / 25 W	NT-421	<input type="checkbox"/>	95242-1 – Current probe 1 MHz – 400 MHz	NT-468
<input type="checkbox"/>	RF-Attenuator 30 dB DC - 1000 MHz / 1 W	NT-423	<input type="checkbox"/>	94106-1L-1 – Current probe 100 kHz – 450 MHz	NT-471
<input type="checkbox"/>	RF-Attenuator 30 dB	NT-424	<input type="checkbox"/>	GA 1240 Power amplifier according to EN 61000-4-16	NT-480
<input type="checkbox"/>	RF-Attenuator 6 dB DC - 1000 MHz / 1 W	NT-425	<input type="checkbox"/>	Coupling networks according to EN 61000-4-16	NT-481 - NT-483
<input type="checkbox"/>	RF-Attenuator 6 dB DC - 1000 MHz / 1 W	NT-426	<input type="checkbox"/>	Van der Hoofden Test Head	NT-484
<input type="checkbox"/>	RF-Attenuator 6 dB	NT-428	<input type="checkbox"/>	PC P4 3 GHz Test computer	NT-500
<input type="checkbox"/>	RF-Attenuator 0 dB - 81 dB	NT-429	<input type="checkbox"/>	PC P4 1700 MHz Notebook	NT-505
<input type="checkbox"/>	WRU 27 - Band blocking 27 MHz	NT-430	<input type="checkbox"/>	Monitoring camera with Monitor	NT-511
<input type="checkbox"/>	WHJ450C9 AA - High pass 450 MHz	NT-431	<input type="checkbox"/>	ES-K1 Version 1.71 SP2 Test software	NT-520
<input type="checkbox"/>	WHJ250C9 AA - High pass 250 MHz	NT-432	<input type="checkbox"/>	EMC32 Version 10.01 Test software	NT-520/1
<input type="checkbox"/>	RF-Load 150 W	NT-433	<input type="checkbox"/>	SRM-TS Version 1.3 software for SRM-3000	NT-522
<input type="checkbox"/>	Impedance transducer 1:4 ; 1:9 ; 1:16	NT-435	<input type="checkbox"/>	SRM-TS Version 1.3.1 software for SRM-3006	NT-522/1
<input type="checkbox"/>	RF-Attenuator DC – 18 GHz 6 dB	NT-436	<input type="checkbox"/>	Spitzenberger und Spies Test software V4.1	NT-525
<input type="checkbox"/>	RF-Attenuator DC – 18 GHz 6 dB	NT-437	<input type="checkbox"/>	Noise power test apparatus according to EN 55014	NT-530
<input type="checkbox"/>	RF-Attenuator DC – 18 GHz 10 dB	NT-438	<input type="checkbox"/>	Vertical coupling plane (ESD)	NT-531
<input type="checkbox"/>	RF-Attenuator DC – 18 GHz 20 dB	NT-439	<input type="checkbox"/>	Test cable #4 for EN 61000-4-6	NT-553
<input type="checkbox"/>	I+P 7780 Directional coupler 100 - 2000 MHz	NT-440	<input type="checkbox"/>	Test cable #3 for conducted emission	NT-554
<input type="checkbox"/>	ESH3-Z2 - Pulse limiter 9 kHz - 30 MHz	NT-441	<input type="checkbox"/>	Test cable #5+#6 ESD-cable (2x470k)	NT-555 + NT-556
<input type="checkbox"/>	Power Divider 6 dB/1 W/50 Ohm	NT-443	<input type="checkbox"/>	Test cable #8 Sucoflex 104EA	NT-559
<input type="checkbox"/>	Directional coupler 0,1 MHz – 70 MHz	NT-444	<input type="checkbox"/>	Test cable #9 (for outdoor measurements)	NT-580
<input type="checkbox"/>	Directional coupler 0,1 MHz – 70 MHz	NT-445	<input type="checkbox"/>	Test cable #10 (for outdoor measurements)	NT-581
<input type="checkbox"/>	Tube imitations according to EN 55015	NT-450	<input type="checkbox"/>	Test cable #13 Sucoflex 104PE	NT-584
<input type="checkbox"/>	FCC-801-M3-16A Coupling decoupling network	NT-458	<input type="checkbox"/>	Test cable #21 for SRM-3000	NT-592
<input type="checkbox"/>	FCC-801-M2-50A Coupling decoupling network	NT-459	<input type="checkbox"/>	Shield chamber	NT-600
<input type="checkbox"/>	FCC-801-M5-25 Coupling decoupling network	NT-460	<input type="checkbox"/>	Climatic chamber	M-1200
<input type="checkbox"/>	FCC-801-AF10 Coupling decoupling network	NT-461			

Division:
Industry & Energy

Department: FG

Test report number:
M/FG-16/139

Page: 3 of 4

Date: 22.12.2016

Checked by: 

Appendix 1 (continued)

Test equipment used

<input type="checkbox"/>	Anechoic Chamber 3 m / 5 m measuring distance	EMV-100	<input type="checkbox"/>	Log.per Antenna 80-2700 MHz STLP 9128 E special	EMV-304
<input type="checkbox"/>	Turntabel 6 m diameter	EMV-101	<input type="checkbox"/>	Log.per Antenna 0,7 – 9 GHz STLP9149	EMV-305
<input type="checkbox"/>	Antenna mast 1 – 4 m	EMV-102	<input type="checkbox"/>	Load Dump Generator LD 200N	EMV-350
<input type="checkbox"/>	Mast and Turntable controller FC-06	EMV-103	<input type="checkbox"/>	Ultra Compact Symulator UCS 200N100	EMV-351
<input type="checkbox"/>	EMC Video/Audiosystem	EMV-104	<input type="checkbox"/>	Automotive Power fail module PFM 200N100.1	EMV-352
<input type="checkbox"/>	EMC Software EMC32 Version 10.01	EMV-105	<input type="checkbox"/>	Voltage Drop Symulator VDS 200Q100	EMV-353
<input type="checkbox"/>	Hornantenna 1 – 18 GHz HF 907	EMV-110	<input type="checkbox"/>	Arb. Generator AutoWave	EMV-354
<input type="checkbox"/>	Antennapre.amp. 1 – 18 GHz ERZ-LNA0200-1800-30-2	EMV-111	<input type="checkbox"/>	Ultra Compact Symulator UCS 500N7	EMV-355
<input type="checkbox"/>	Trilog Antenna 30-3000 MHz VULB9163	EMV-112	<input type="checkbox"/>	Coupling decoupling network CNI 503B7 / 32 A	EMV-356
<input type="checkbox"/>	Monopol 9 kHz – 30 MHz VAMP 9243	EMV-113	<input type="checkbox"/>	Coupling decoupling network CNI 503B7 / 63 A	EMV-357
<input type="checkbox"/>	Antennapre.amp 18 – 40 GHz BBV 9721	EMV-114	<input type="checkbox"/>	Telecom Surge Generator TSurge 7	EMV-358
<input type="checkbox"/>	DC Artificial Network PVDC 8300	EMV-150	<input type="checkbox"/>	Coupling decoupling network CNI 508N2	EMV-359
<input type="checkbox"/>	AC Artificial Network NNLK 8121 RC	EMV-151	<input type="checkbox"/>	Coupling decoupling network CNV 504N2.2	EMV-360
<input type="checkbox"/>	EMI Receiver ESR26	EMV-200	<input type="checkbox"/>	Immunity generator NSG4060/NSG4060-1	EMV-361
<input type="checkbox"/>	Signalgenerator 9 kHz – 40 GHz N5173B	EMV-201	<input type="checkbox"/>	Coupling network CDND M316-2	EMV-362
<input type="checkbox"/>	GPS Frequency normal B-88	EMV-202	<input type="checkbox"/>	Coupling network CT419-5	EMV-363
<input type="checkbox"/>	DC Power supply N5745A	EMV-203	<input type="checkbox"/>	ESD Generator NSG 437	EMV-364
<input type="checkbox"/>	DC Power supply N5745A	EMV-204	<input type="checkbox"/>	Pulse Limiter VTSD 9561-F BNC	EMV-405
<input type="checkbox"/>	Spektrum Analyzator FSV40	EMV-205	<input type="checkbox"/>	Transient emission BSM200N40+BS200N100	EMV-450+451
<input type="checkbox"/>	Thd Multimeter Model 2015	EMV-206	<input type="checkbox"/>	Cap. Coupling Clamp HFK	EMV-455
<input type="checkbox"/>	Poweramplifier PAS15000	EMV-207/abc	<input type="checkbox"/>	Mag. Field System MS100N+MC26100+MC2630	EMV-456-458
<input type="checkbox"/>	Inrush Current Source	EMV-208/abc	<input type="checkbox"/>	Coupling network CDN M2-100A	EMV-459
<input type="checkbox"/>	Arb.-generator Sycore	EMV-209	<input type="checkbox"/>	Coupling network CDN M3-32A	EMV-460
<input type="checkbox"/>	Harmonics/Flicker analyzer ARS 16/3	EMV-210	<input type="checkbox"/>	Coupling network CDN M5-100A	EMV-461
<input type="checkbox"/>	HF- Amplifier 9 kHz-250 MHz BBA150	EMV-300	<input type="checkbox"/>	Current Clamp CIP 9136A	EMV-462
<input type="checkbox"/>	HF- Amplifier 80 -1000 MHz BBA150	EMV-301	<input type="checkbox"/>	DC Artificial Network HV-AN 150	EMV-464+465
<input type="checkbox"/>	HF- Amplifier 0,8 - 6 GHz BBA150	EMV-302	<input type="checkbox"/>	Coupling Clamp EM 101	EMV-466
<input type="checkbox"/>	High Power Ant. 20-200 MHz VHBD 9134	EMV-303	<input type="checkbox"/>	Decoupling Clamp FTC 101	EMV-467
			<input type="checkbox"/>	Power attenuator DG 250 W 6 GHz 6 dB	EMV-469

Division:
Industry & Energy

Department: FG

Test report number:
M/FG-16/139

Page: 4 of 4

Date: 22.12.2016

Checked by: 

Appendix 2 Photodocumentation

Description: Front view

Division:
Industry & Energy

Department: FG

Test report reference:
M/FG-16/139

Page: 1 of 14

Date: 22.12.2016

checked by: A



Appendix 2 Photodocumentation

Description: Backside view

Division:
Industry & Energy

Department: FG

Test report reference:
M/FG-16/139

Page: 2 of 14

Date: 22.12.2016

checked by: M



Appendix 2 Photodocumentation

Description: Label

Division:
Industry & Energy

Department: FG

Test report reference:
M/FG-16/139

Page: 3 of 14

Date: 22.12.2016

checked by: h



Appendix 2 Photodocumentation

Description: Case opened view #1


Division:
Industry & Energy

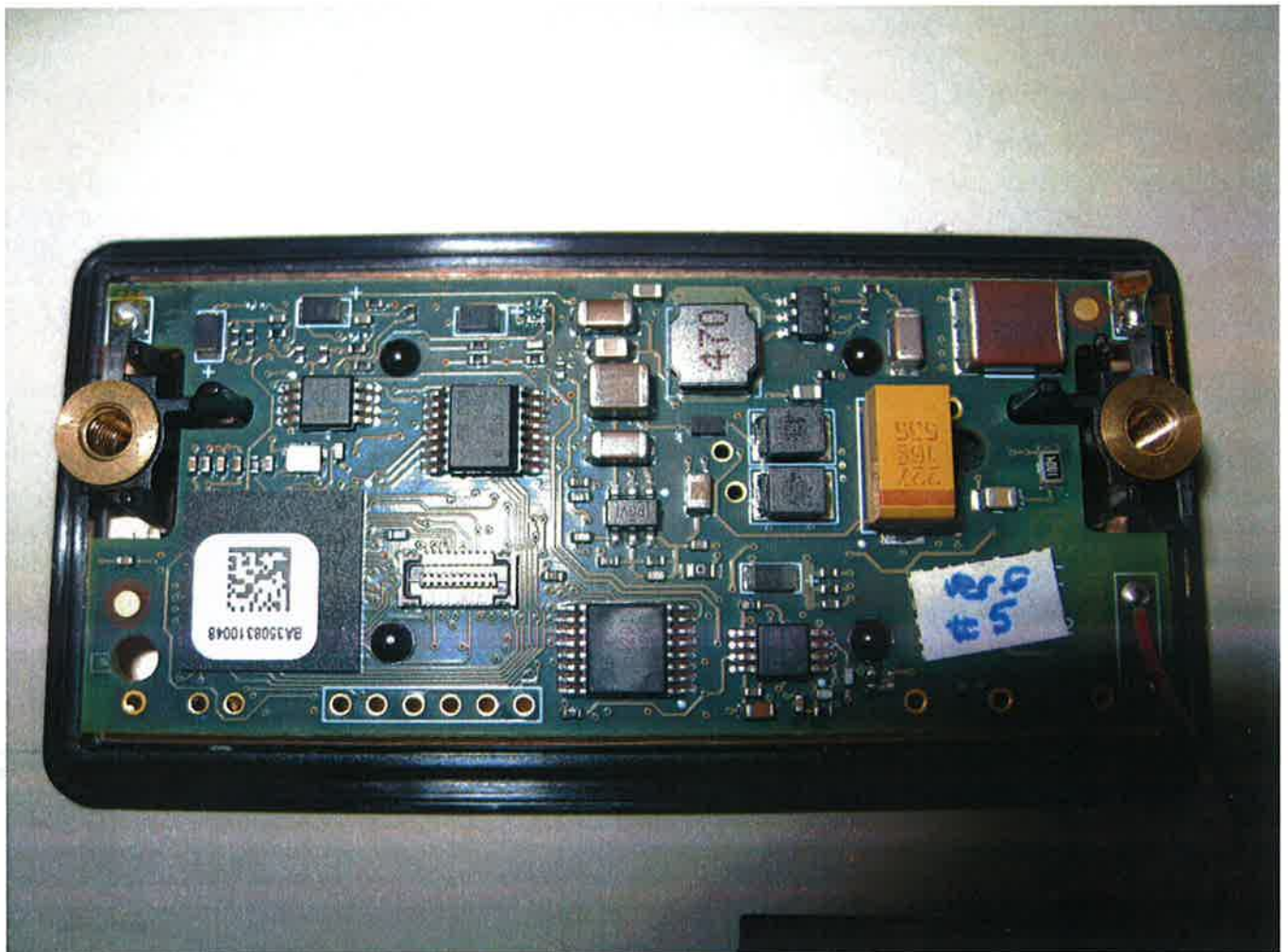
Department: FG

Test report reference:
M/FG-16/139

Page: 4 of 14

Date: 22.12.2016

checked by: 



Appendix 2 Photodocumentation

Description: Case opened view #2

Division:
Industry & Energy

Department: FG

Test report reference:
M/FG-16/139

Page: 5 of 14

Date: 22.12.2016

checked by: *A*



Appendix 2 Photodocumentation

Description: Case opened view #3

Division:
Industry & Energy

Department: FG

Test report reference:
M/FG-16/139

Page: 6 of 14

Date: 22.12.2016

checked by:



Appendix 2 Photodocumentation

Description: Case opened view #4

Division:
Industry & Energy

Department: FG

Test report reference:
M/FG-16/139

Page: 7 of 14

Date: 22.12.2016

checked by: h



Appendix 2 Photodocumentation

Description: Case opened view #5

Division:
Industry & Energy

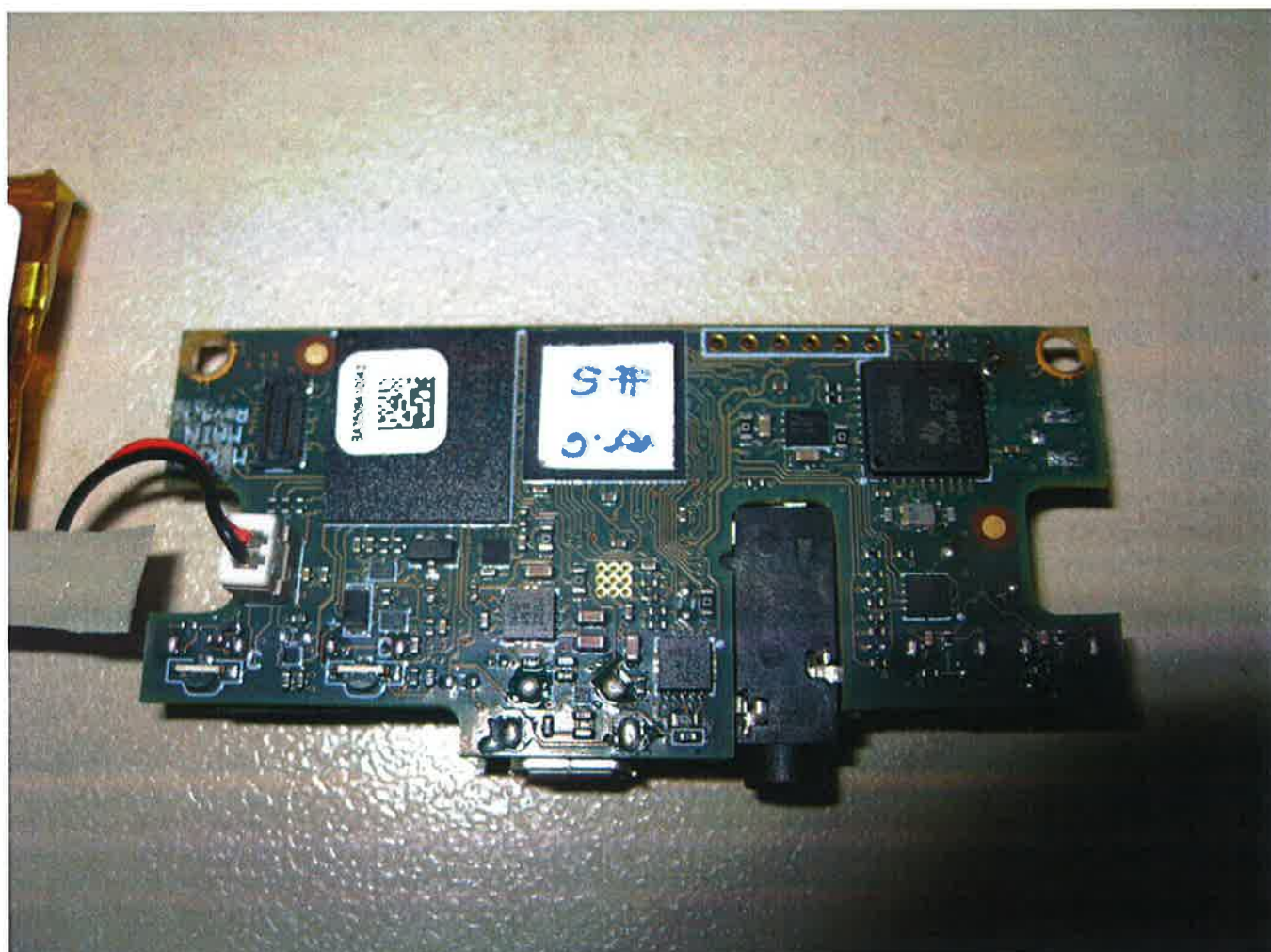
Department: FG

Test report reference:
M/FG-16/139

Page: 8 of 14

Date: 22.12.2016

checked by:



Appendix 2 Photodocumentation

Description: Case opened view #6

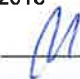
Division:
Industry & Energy

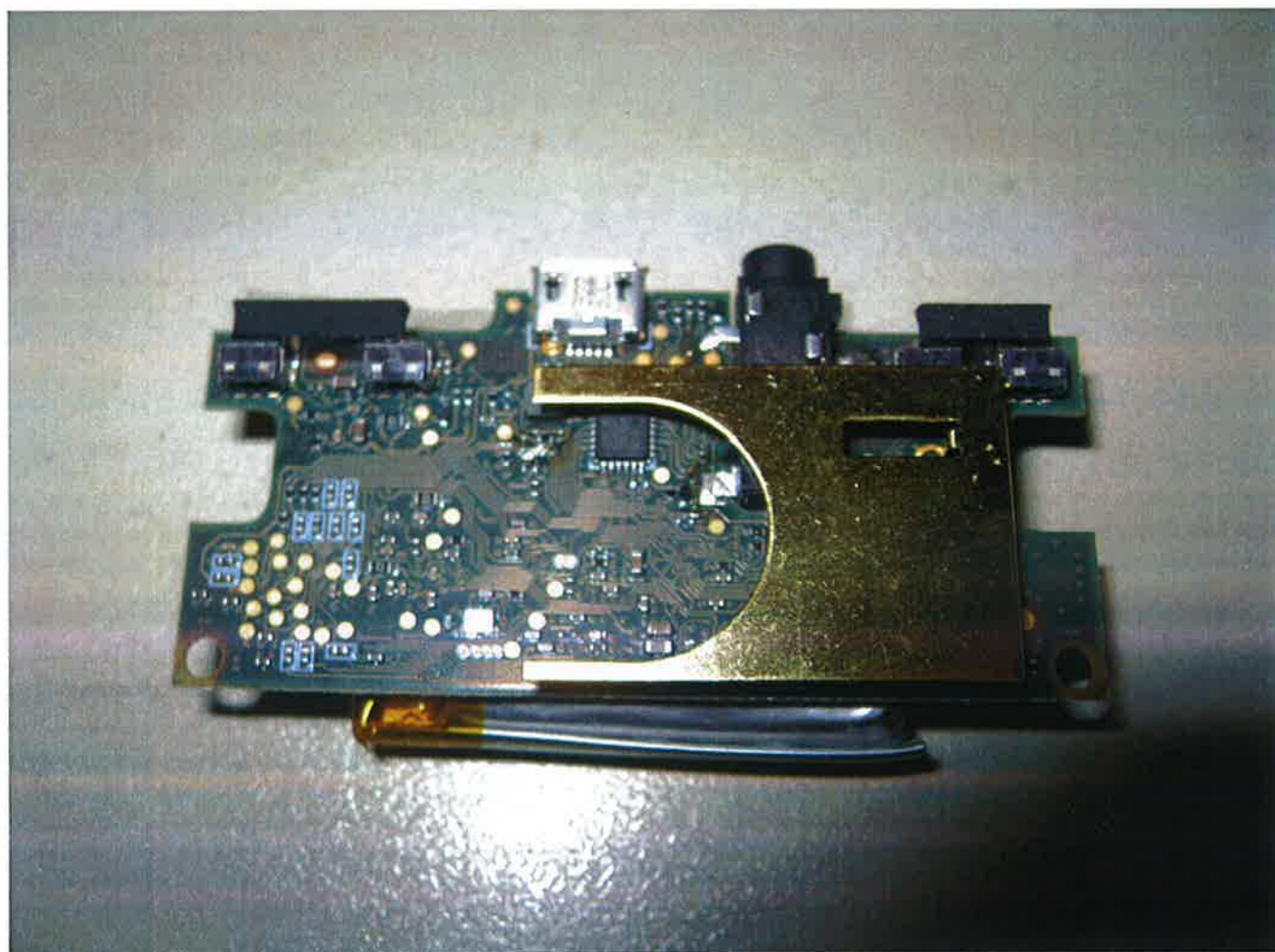
Department: FG

Test report reference:
M/FG-16/139

Page: 9 of 14

Date: 22.12.2016

checked by: 



Appendix 2 Photodocumentation

Description: Test setup emissions up to 1 GHz –
Bluetooth + Audio mode

Division:
Industry & Energy

Department: FG

Test report reference:
M/FG-16/139

Page: 10 of 14

Date: 22.12.2016

checked by: *M*



Appendix 2 Photodocumentation

Description: Test setup emissions up to 1 GHz – USB mode

Division:
Industry & Energy

Department: FG

Test report reference:
M/FG-16/139

Page: 11 of 14

Date: 22.12.2016

checked by: 



Appendix 2 Photodocumentation

Description: Test setup emissions above 1 GHz –
Bluetooth + Audio mode

Division:
Industry & Energy

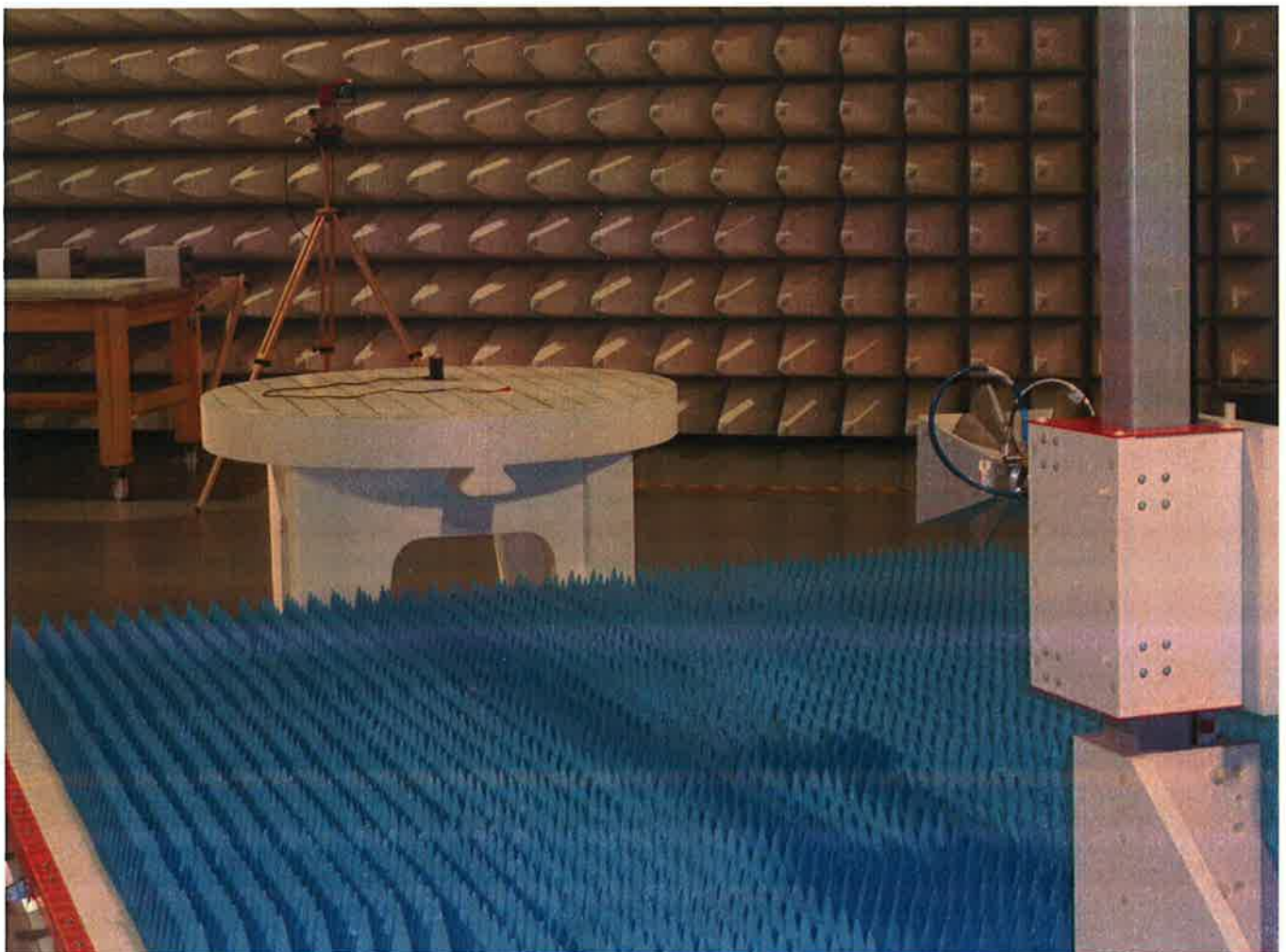
Department: FG

Test report reference:
M/FG-16/139

Page: 12 of 14

Date: 22.12.2016

checked by: 



Appendix 2 Photodocumentation

Description: Test setup emissions above 1 GHz –
USB mode


Division:
Industry & Energy

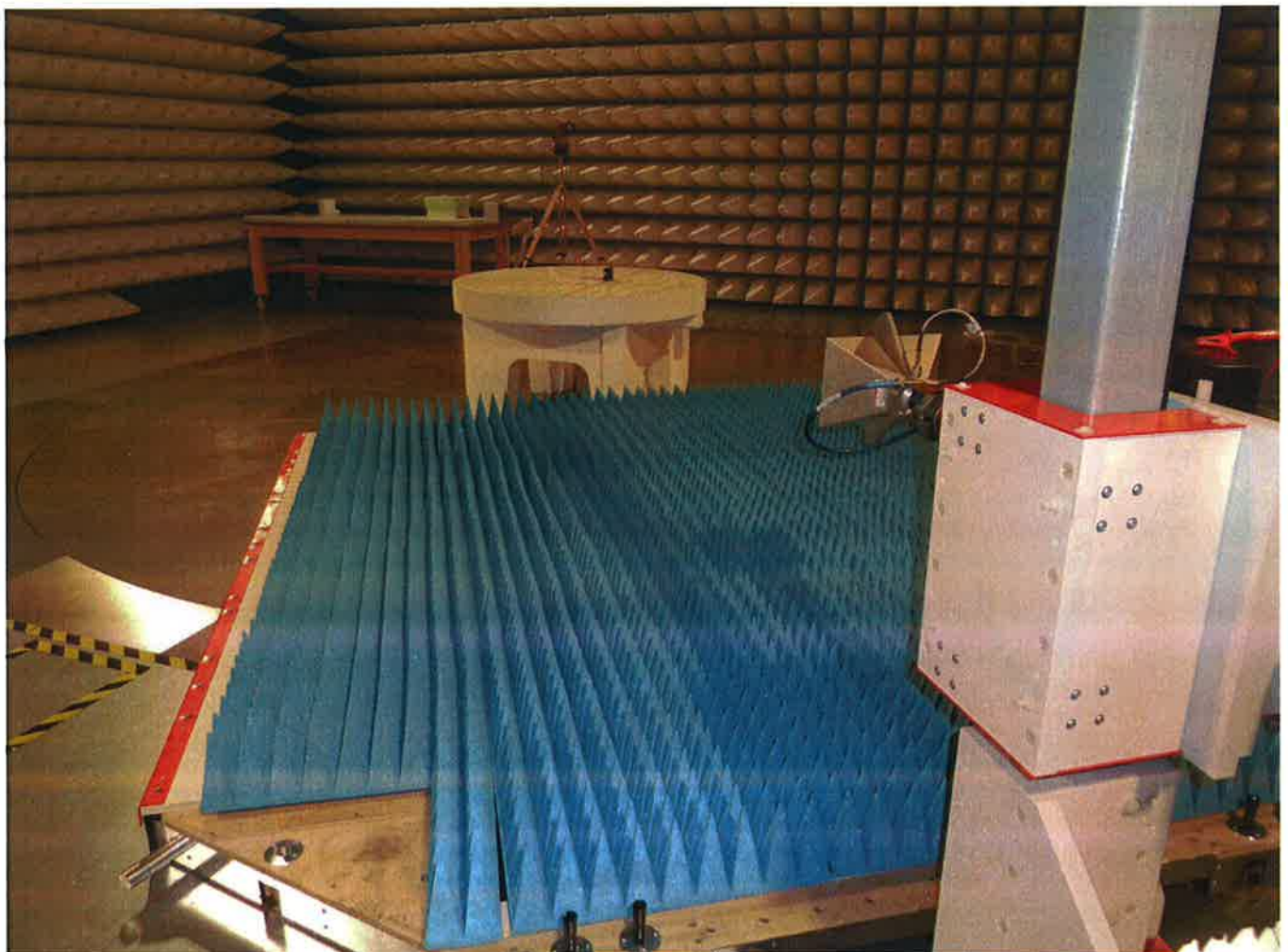
Department: FG

Test report reference:
M/FG-16/139

Page: 13 of 14

Date: 22.12.2016

checked by: 



Appendix 2 Photodocumentation

Description: Test setup detail view

Division:
Industry & Energy

Department: FG

Test report reference:
M/FG-16/139

Page: 14 of 14

Date: 22.12.2016

checked by: 