

## SAFETY NOTE

- 1, This appliance can be used by children aged from 8 years and above and persons with reduced physical, sensory or mental capabilities or lack of experience and knowledge if they have been given supervision or instruction concerning use of the appliance in a safe way and understand the hazards involved.
- 2, Children shall not play with the appliance.
- 3, Cleaning and user maintenance shall not be made by children without supervision.
- 4, If the supply cord is damaged, it must be replaced by the manufacturer, its service agent or similarly qualified persons in order to avoid a hazard.
- 5, **WARNING:** the drive shall be disconnected from its power source during cleaning, maintenance and when replacing parts.
- 6, The instructions shall state that the A-weighted emission sound pressure level of the drive is equal to or less than 70 dB(A), e.g. by writing  $L_{pA} \leq 70 \text{ dB(A)}$ .
- 7, The mass and the dimension of the driven part shall be compatible with the rated torque and rated operating time.
- 8, The type of driven part the drive is intended for.
- 9, **WARNING:** Important safety instructions. It is important for the safety of persons to follow these instructions. Save these instructions.
- 10, Do not allow children to play with fixed controls. Keep remote controls away from children
- 11, Frequently examine the installation for imbalance and signs of wear or damage to cables and springs. Do not use if repair or adjustment is necessary
- 12, Watch the moving shutter and keep people away until he shutter is completely closed
- 13, **WARNING:** Important safety instructions. Follow all instructions, since incorrect installation can lead to severe injury.
- 14, Before installing the drive, remove any unnecessary cords and disable any equipment not needed for powered operation



(A-02)

## Tubular Motor- BR-28-0228 Specification

### Product introduction

⚠ One motor can store maximum 20 channels; after fully stored, if pair new channels, only the last one will be covered circularly.



#### Features:

- Built-in Receiver
- Electronic Limit
- Switch Direction
- Stall Protection
- Speed Regulation
- Jog & Tilt
- Preferred Stop Position
- Low Power Consumption
- Restore Factory Setting

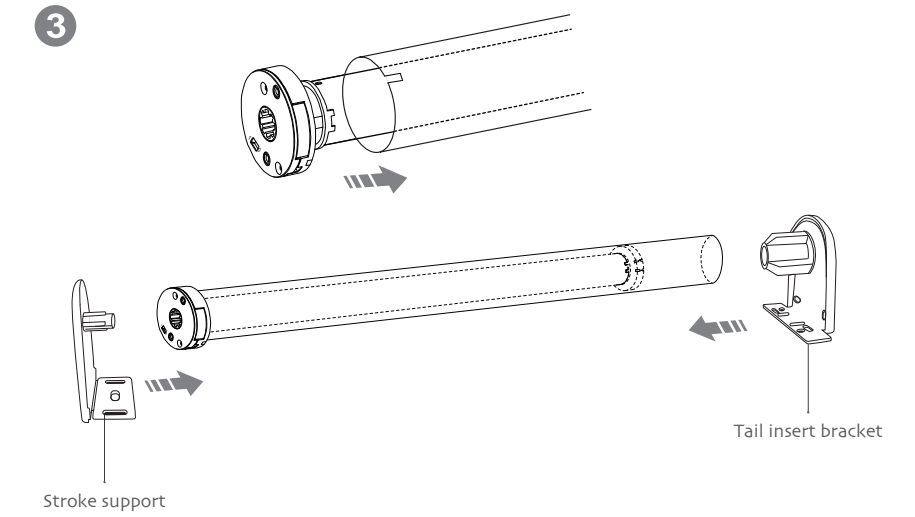
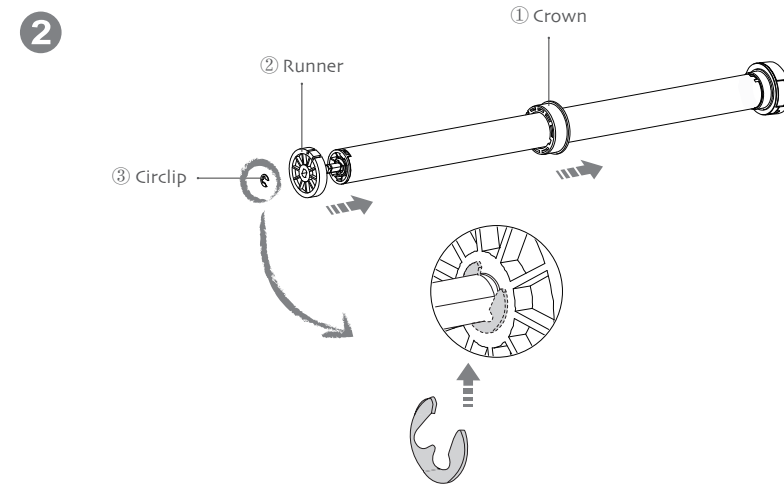
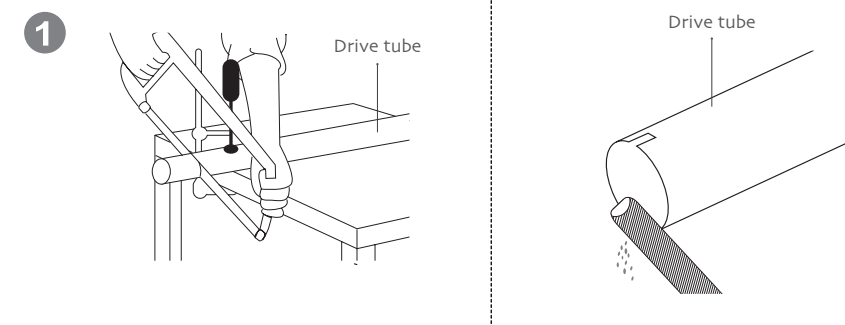


Parameter (More models and parameters are subject to the nameplate)

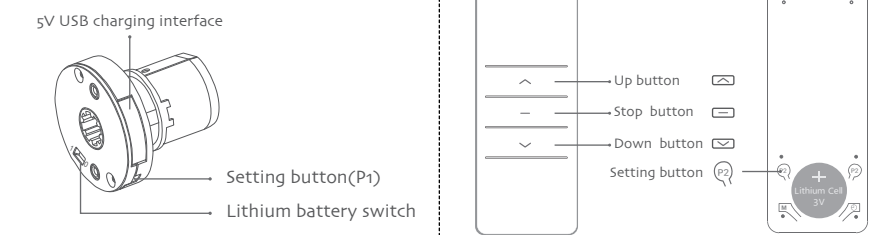
Type	DM28LEU/S
Rated Torque(N.m)	2.0N.m
Rated Speed(RPM)	28RPM
The Input Voltage(V)	USB 5V 2A
Rated Power(W)	15W
Emission Frequency(MHz)	433.92MHz

### Motor installation

- ① Driving tube must be close-fitting with crown and drive adapter.
- ② Choose crown and drive adapter based on the driving tube.



### Button specification



Note: dial lithium battery switch, 0 is off switch, 1 is turn on switch.

### Operation note

⚠ Please read following points of attention carefully before setting.

1. Before the first use, please charge, to ensure full power after the use of (The motor uses a 5V USB charger to charge).
  - ① Motor stop running when the supply voltage is lower than 8.0V, and it will restart again when the voltage is greater than 8.5V
  - ② When the power voltage is lower than 7.0V, the motor stops and the buzzer chirps. When the voltage is greater than 7.5V, it can be started again.
  - ③ When the voltage is lower than 10V, when the motor is running continuously, the alarm will be made and the buzzer will be called 10 times.
  - ④ When the power voltage is lower than 10.5V, low voltage prompt, red light interval 1s frequency flash, total 10 times.
  - ⑤ During the charging process, the green light flashes between 1S and 1S, and the green light is always on after the battery voltage is greater than 12.4V, and the charging is completed.
2. Don't operate motors when low voltage alarm
3. Operating:
  - ① The valid interval of the emitter button is 10s, the emitter will quit the set after 10s.
  - ② The motor will run or beep for hint, please do the next step after the hint.
4. Set the limit position:
  - ① After the upper/lower limit setting, and the upper/lower limit position can't at the same position.
  - ② After the limit setting, with power off and memory function.
  - ③ Into the match-code status 2 minutes later, it will quit out the setting limits status automatically.
  - ④ Restore factory settings to clear all settings.
5. When the motor running without any operation, the maximum running time is 6 minutes, it will stop automatically.
6. If the emitter lost, please setting up again with the new emitter.



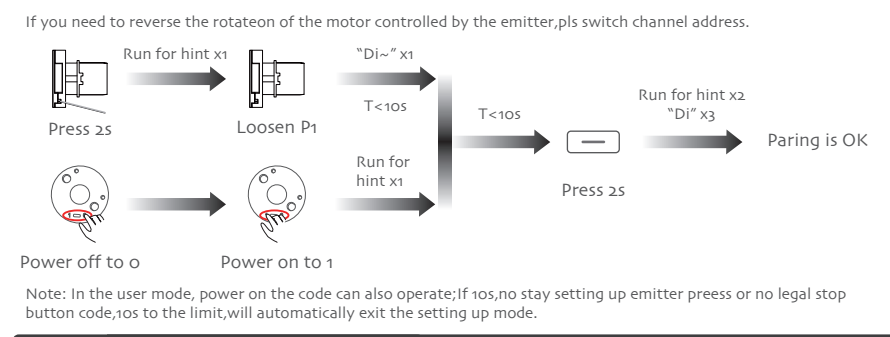
# Tubular Motor-DM28LEU/S Specification



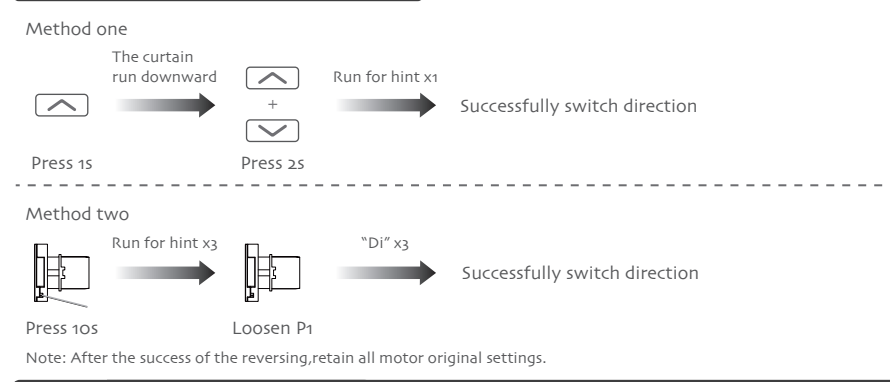
(A-02)

## Factory mode

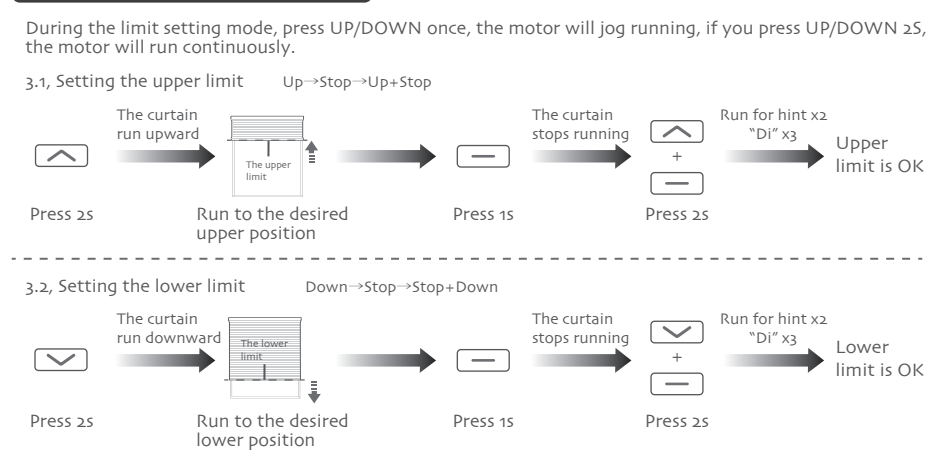
### 1 Paring



### 2 Switch rotating direction(optional)

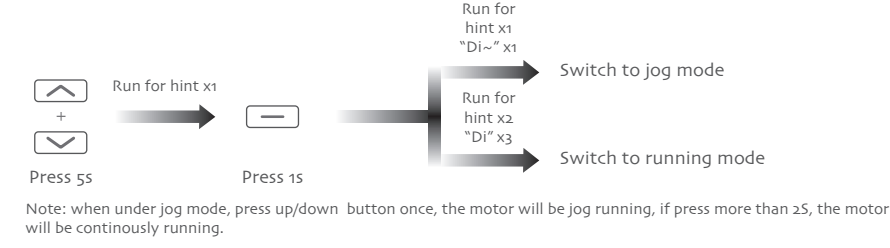


### 3 Setting upper and lower limit

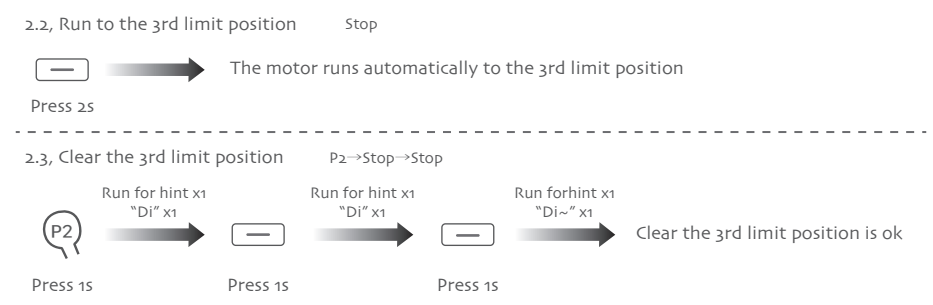
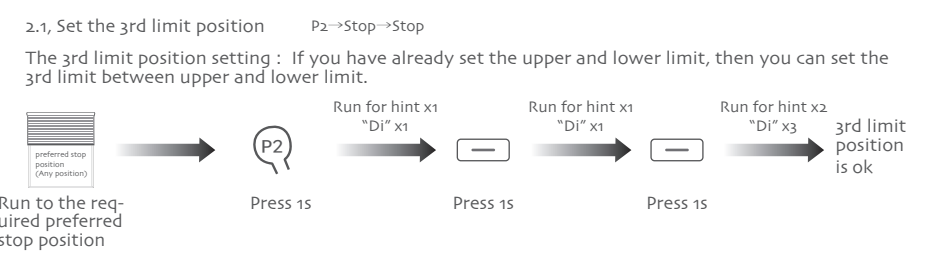


## User mode

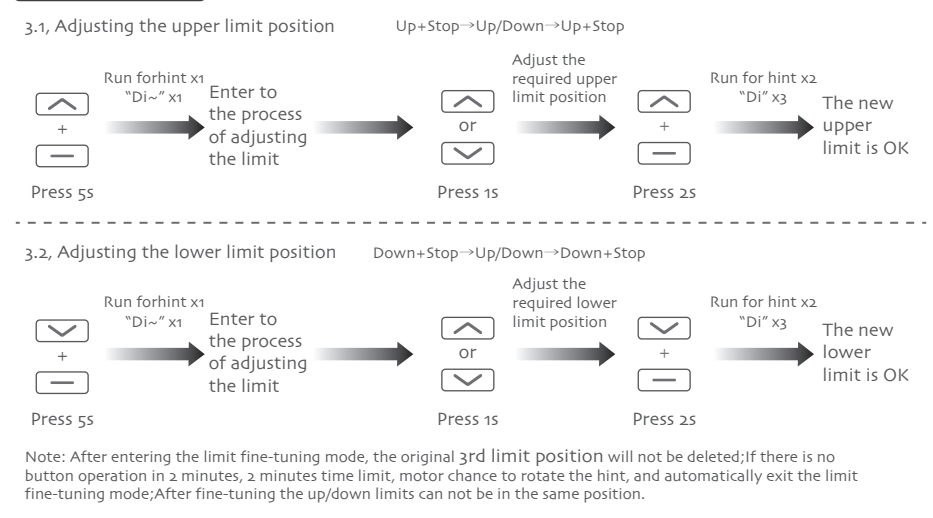
### 1 Jog mode & running mode switch



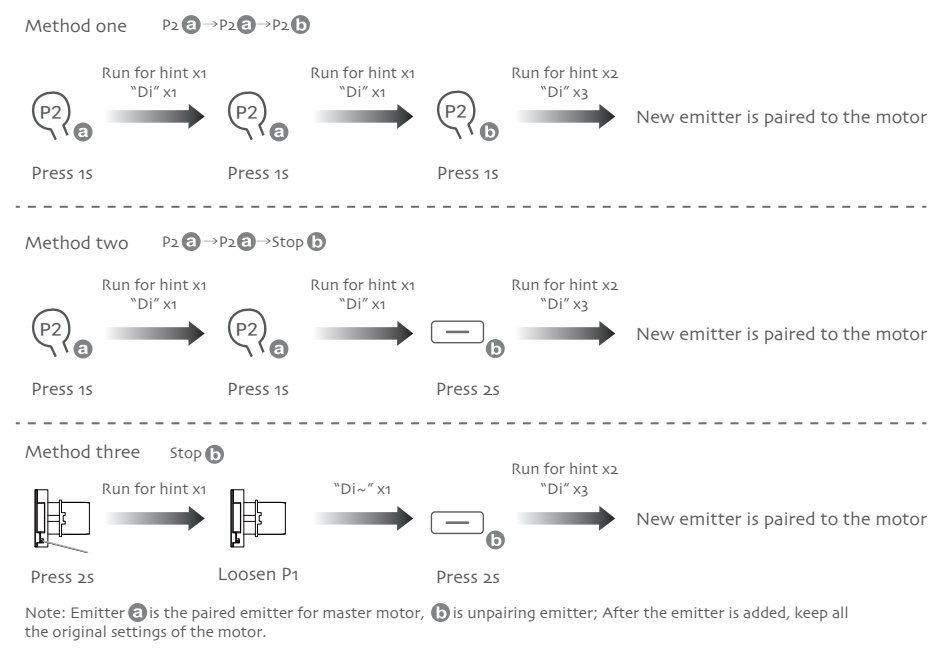
### 2 3rd preferred stop position setting



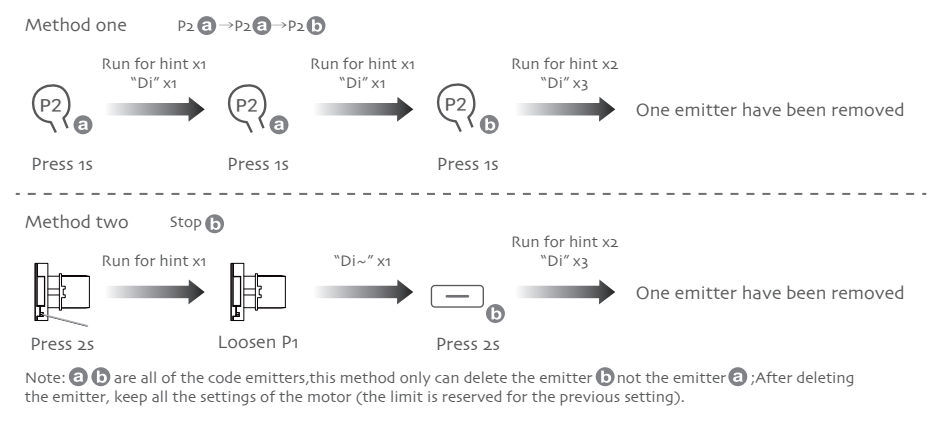
### 3 Adjust limits



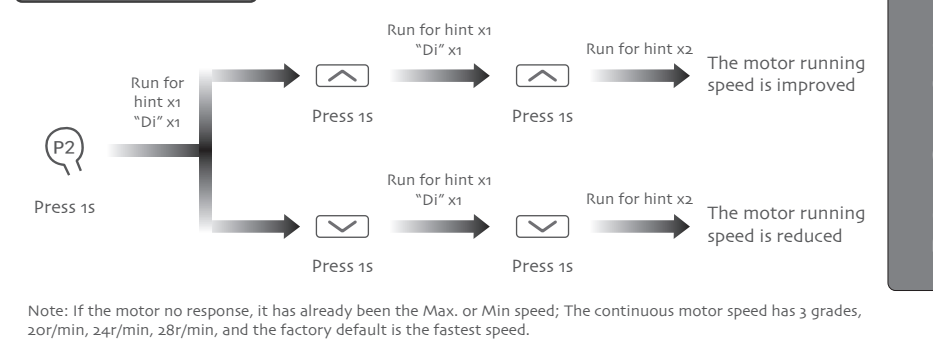
### 4 Pair additional emitter



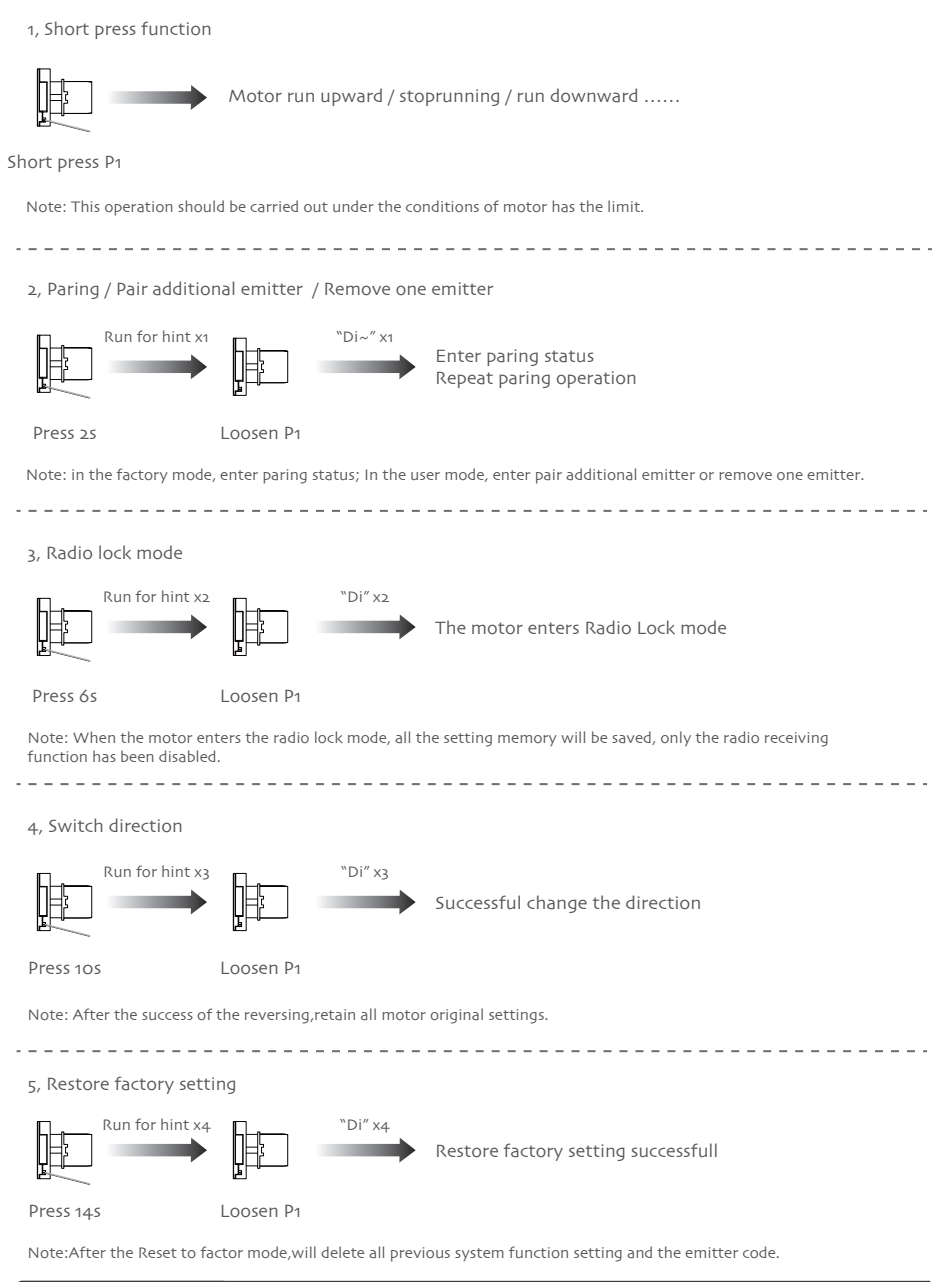
### 5 Remove one emitter



### 6 Speed Regulation



### Motor P1 button operation



### Fault and solution

NUMBER	ISSUE	POSSIBLE CAUSES	SOLUTION
1	The motor doesn't run	a, The battery is not activated. b, The emitter hasn't been paired; c, If press P1 button for long time, the motor no reaction, probably the board is short circuit, or the motor is broken.	a, Activate the motor afterfully charged b, Paring again; c, Contact after sales service for more details

## FCC Warning

This device complies with Part 15 of the FCC Rules.

Operation is subject to the following two conditions:

(1) This device may not cause harmful interference, and (2) this device must accept any interference received, including interference that may cause undesired operation.

NOTE 1: This equipment has been tested and found to comply with the limits for a Class B digital device, pursuant to part 15 of the FCC Rules. These limits are designed to provide reasonable protection against harmful interference in a residential installation. This equipment generates uses and can radiate radio frequency energy and, if not installed and used in accordance with the instructions, may cause harmful interference to radio communications. However, there is no guarantee that interference will not occur in a particular installation. If this equipment does cause harmful interference to radio or television reception, which can be determined by turning the equipment off and on, the user is encouraged to try to correct the interference by one or more of the following measures:

- Reorient or relocate the receiving antenna.
- Increase the separation between the equipment and receiver.
- Connect the equipment into an outlet on a circuit different from that to which the receiver is connected.
- Consult the dealer or an experienced radio/TV technician for help.

NOTE 2: Any changes or modifications to this unit not expressly approved by the party responsible for compliance could void the user's authority to operate the equipment.