

# FCC REPORT

**Applicant:** Grandex International Corporation

**Address of Applicant:** 4F, No.525, Zhongzheng Rd., Xindian Dist., New Taipei City  
23148, Taiwan (R.O.C.)

**Equipment Under Test (EUT)**

Product Name: Controller

Model No.: PS500

Trade Mark: Grandex

**FCC ID:** 2AHDSPS500-01

**Applicable standards:** FCC CFR Title 47 Part 15 Subpart C Section 15.249:2015

**Date of sample receipt:** June 03, 2016

**Date of Test:** June 06- 17, 2016

**Date of report issued:** June 20, 2016

**Test Result :** PASS \*

\* In the configuration tested, the EUT complied with the standards specified above.

Authorized Signature:

A circular logo for GTS Global Testing is overlaid with a handwritten signature in black ink. The logo contains the text 'GTS GLOBAL TESTING' and 'GLOBAL UNITED TECHNOLOGY SERVICES CO., LTD.' around the perimeter.

**Robinson Lo**

**Laboratory Manager**

This report details the results of the testing carried out on one sample. The results contained in this test report do not relate to other samples of the same product and does not permit the use of the GTS product certification mark. The manufacturer should ensure that all products in series production are in conformity with the product sample detailed in this report.

This report may only be reproduced and distributed in full. If the product in this report is used in any configuration other than that detailed in the report, the manufacturer must ensure the new system complies with all relevant standards. Any mention of GTS or testing done by GTS in connection with, distribution or use of the product described in this report must be approved by GTS in writing.

This document cannot be reproduced except in full, without prior written approval of the Company. Any unauthorized alteration, forgery or falsification of the content or appearance of this document is unlawful and offenders may be prosecuted to the fullest extent of the law. Unless otherwise stated the results shown in this test report refer only to the sample(s) tested and such sample(s) are retained for 90 days only.

## 2 Version

Version No.	Date	Description
00	June 20, 2016	Original

**Prepared By:**

*Edward Pan*

**Date:**

June 20, 2016

**Project Engineer**

**Check By:**

*Andy Wu*

**Date:**

June 20, 2016

**Reviewer**

## 3 Contents

	Page
1 COVER PAGE.....	1
2 VERSION.....	2
3 CONTENTS .....	3
4 TEST SUMMARY .....	4
4.1 MEASUREMENT UNCERTAINTY .....	4
5 GENERAL INFORMATION.....	5
5.1 CLIENT INFORMATION .....	5
5.2 GENERAL DESCRIPTION OF EUT .....	5
5.3 TEST MODE .....	7
5.4 DESCRIPTION OF SUPPORT UNITS .....	7
5.5 TEST FACILITY.....	7
5.6 TEST LOCATION .....	7
5.7 DESCRIPTION OF SUPPORT UNITS .....	7
5.8 OTHER INFORMATION REQUESTED BY THE CUSTOMER .....	7
6 TEST INSTRUMENTS LIST .....	8
7 TEST RESULTS AND MEASUREMENT DATA.....	9
7.1 ANTENNA REQUIREMENT .....	9
7.2 CONDUCTED EMISSIONS .....	10
7.3 RADIATED EMISSION METHOD.....	13
7.3.1 <i>Field Strength of The Fundamental Signal</i> .....	15
7.3.2 <i>Spurious emissions</i> .....	16
7.3.3 <i>Bandedge emissions</i> .....	19
7.4 20dB OCCUPY BANDWIDTH.....	20
8 TEST SETUP PHOTO .....	22
9 EUT CONSTRUCTIONAL DETAILS .....	24

## 4 Test Summary

Test Item	Section in CFR 47	Result
Antenna requirement	15.203	Pass
AC Power Line Conducted Emission	15.207	Pass
Field strength of the fundamental signal	15.249 (a)	Pass
Spurious emissions	15.249 (a) (d)/15.209	Pass
Band edge	15.249 (d)/15.205	Pass
20dB Occupied Bandwidth	15.215 (c)	Pass

*Pass: The EUT complies with the essential requirements in the standard.*

*Remark: Test according to ANSI C63.10 2013 and ANSI C63.4: 2014*

### 4.1 Measurement Uncertainty

Test Item	Frequency Range	Measurement Uncertainty	Notes
Radiated Emission	9kHz ~ 30MHz	± 4.34dB	(1)
Radiated Emission	30MHz ~ 1000MHz	± 4.24dB	(1)
Radiated Emission	1GHz ~ 26.5GHz	± 4.68dB	(1)
AC Power Line Conducted Emission	0.15MHz ~ 30MHz	± 3.45dB	(1)

Note (1): The measurement uncertainty is for coverage factor of k=2 and a level of confidence of 95%.

## 5 General Information

### 5.1 Client Information

Applicant:	Grandex International Corporation
Address of Applicant:	4F, No.525, Zhongzheng Rd., Xindian Dist., New Taipei City 23148, Taiwan (R.O.C.)
Manufacturer/Factory:	Grandex International Corporation
Address of Manufacturer/Factory:	4F, No.525, Zhongzheng Rd., Xindian Dist., New Taipei City 23148, Taiwan (R.O.C.)

### 5.2 General Description of EUT

Product Name:	Controller
Model No.:	PS500
Operation Frequency:	2476MHz~2480.5MHz
Channel numbers:	3
Modulation type:	GFSK
Antenna Type:	PCB antenna
Antenna gain:	0dBi (declare by Applicant)
Power supply:	AC Adapter: Model No. :MKS-0501000 Input: AC 100-240V, 50/60Hz 0.3A Output: DC 5V, 1000mA

Operation Frequency each of channel					
Channel	Frequency	Channel	Frequency	Channel	Frequency
1	2476.0MHz	2	2477.5MHz	3	2480.5MHz

**Note:**

In section 15.31(m), regards to the operating frequency range from 1 to 10 MHz, the Lowest frequency and the highest frequency of channel were selected to perform the test, and the selected channel see below:

Channel	Frequency
The lowest channel	2476.0MHz
The Highest channel	2480.5MHz

### 5.3 Test mode

Transmitting mode	Keep the EUT in continuously transmitting mode
<p><i>Remark: During the test, the test voltage was tuned from 85% to 115% of the nominal rated supply voltage, and found that the worst case was under the nominal rated supply condition. So the report just shows that condition's data.</i></p>	

#### Per-test mode.

We have verified the construction and function in typical operation, The EUT was placed on three different polar directions; i.e. X axis, Y axis, Z axis. which was shown in this test report and defined as follows:

Axis	X	Y	Z
Field Strength(dBuV/m)	94.78	97.03	96.45

### 5.4 Description of Support Units

None.
-------

### 5.5 Test Facility

<p>The test facility is recognized, certified, or accredited by the following organizations:</p> <ul style="list-style-type: none"> <li>● <b>FCC —Registration No.: 600491</b> Global United Technology Services Co., Ltd., Shenzhen EMC Laboratory has been registered and fully described in a report filed with the (FCC) Federal Communications Commission. The acceptance letter from the FCC is maintained in files. Registration 600491, June 28, 2013.</li> <li>● <b>Industry Canada (IC) —Registration No.: 9079A-2</b> The 3m Semi-anechoic chamber of Global United Technology Services Co., Ltd. has been registered by Certification and Engineering Bureau of Industry Canada for radio equipment testing with Registration No.: 9079A-2, June 26, 2013.</li> </ul>
---

### 5.6 Test Location

All tests were performed at:
<p>Global United Technology Services Co., Ltd. Address: No. 301-309, 3/F., Jinyuan Business Building, No.2, Laodong Industrial Zone, Xixiang Road, Baoan District, Shenzhen, Guangdong, China 518102 Tel: 0755-27798480 Fax: 0755-27798960</p>

### 5.7 Description of Support Units

None.
-------

### 5.8 Other Information Requested by the Customer

None.
-------

## 6 Test Instruments list

Radiated Emission:						
Item	Test Equipment	Manufacturer	Model No.	Inventory No.	Cal.Date (mm-dd-yy)	Cal.Due date (mm-dd-yy)
1	3m Semi- Anechoic Chamber	ZhongYu Electron	9.2(L)*6.2(W)* 6.4(H)	GTS250	Mar. 27 2016	Mar. 26 2017
2	Control Room	ZhongYu Electron	6.2(L)*2.5(W)* 2.4(H)	GTS251	N/A	N/A
3	Spectrum Analyzer	Agilent	E4440A	GTS533	Jun 30 2015	Jun 29 2016
4	EMI Test Receiver	Rohde & Schwarz	ESU26	GTS203	Jun 30 2015	Jun 29 2016
5	BiConiLog Antenna	SCHWARZBECK MESS-ELEKTRONIK	VULB9163	GTS214	Jun 30 2015	Jun 29 2016
6	Double -ridged waveguide horn	SCHWARZBECK MESS-ELEKTRONIK	9120D-829	GTS208	June 26 2015	June 25 2016
7	Horn Antenna	ETS-LINDGREN	3160	GTS217	Mar. 26 2016	Mar. 25 2017
8	EMI Test Software	AUDIX	E3	N/A	N/A	N/A
9	Coaxial Cable	GTS	N/A	GTS213	Mar. 27 2016	Mar. 26 2017
10	Coaxial Cable	GTS	N/A	GTS211	Mar. 27 2016	Mar. 26 2017
11	Coaxial cable	GTS	N/A	GTS210	Mar. 27 2016	Mar. 26 2017
12	Coaxial Cable	GTS	N/A	GTS212	Mar. 27 2016	Mar. 26 2017
13	Amplifier(100kHz-3GHz)	HP	8347A	GTS204	Jun. 30, 2015	Jun 29 2016
14	Amplifier(2GHz-20GHz)	HP	8349B	GTS206	Jun. 30, 2015	Jun 29 2016
15	Amplifier (18-26GHz)	Rohde & Schwarz	AFS33-18002 650-30-8P-44	GTS218	June 26 2015	June 25 2016
16	Band filter	Amindeon	82346	GTS219	Mar. 27 2016	Mar. 26 2017

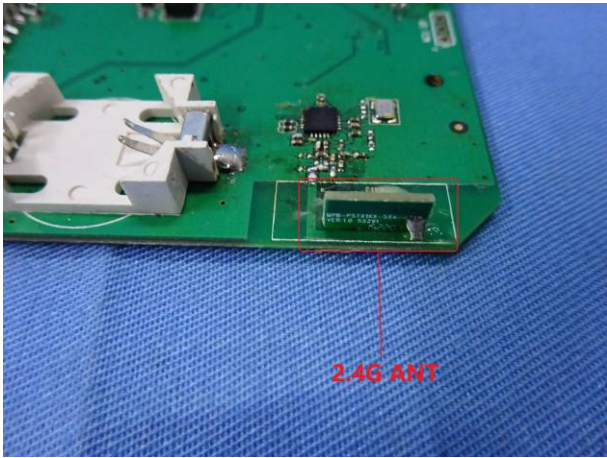
Conducted Emission:						
Item	Test Equipment	Manufacturer	Model No.	Inventory No.	Cal.Date (mm-dd-yy)	Cal.Due date (mm-dd-yy)
1	Shielding Room	ZhongYu Electron	7.0(L)x3.0(W)x3.0(H)	GTS264	Jun. 30 2015	Jun. 29 2016
2	EMI Test Receiver	Rohde & Schwarz	ESCS30	GTS223	Jun. 30 2015	Jun. 29 2016
3	10dB Pulse Limita	Rohde & Schwarz	N/A	GTS224	Jun. 30 2015	Jun. 29 2016
4	Coaxial Switch	ANRITSU CORP	MP59B	GTS225	Jun. 30 2015	Jun. 29 2016
5	LISN	SCHWARZBECK MESS-ELEKTRONIK	NSLK 8127	GTS226	Jun. 30 2015	Jun. 29 2016
6	Coaxial Cable	GTS	N/A	GTS227	Jun. 30 2015	Jun. 29 2016
7	EMI Test Software	AUDIX	E3	N/A	N/A	N/A

General used equipment:						
Item	Test Equipment	Manufacturer	Model No.	Inventory No.	Cal.Date (mm-dd-yy)	Cal.Due date (mm-dd-yy)
1	Barometer	ChangChun	DYM3	GTS257	July 07 2015	July 06 2016



## 7 Test results and Measurement Data

### 7.1 Antenna requirement

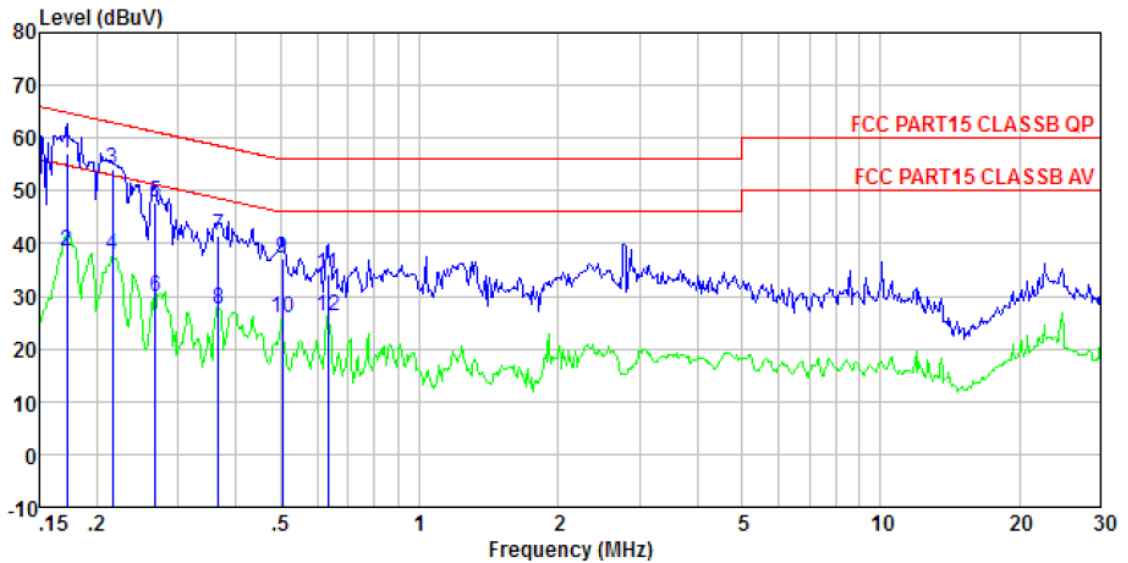
<b>Standard requirement:</b>	FCC Part15 C Section 15.203
<b>15.203 requirement:</b> An intentional radiator shall be designed to ensure that no antenna other than that furnished by the responsible party shall be used with the device. The use of a permanently attached antenna or of an antenna that uses a unique coupling to the intentional radiator, the manufacturer may design the unit so that a broken antenna can be replaced by the user, but the use of a standard antenna jack or electrical connector is prohibited.	
<b>EUT Antenna:</b>	
<p><i>The antenna is PCB antenna, the best case gain of the antenna is 0dBi</i></p> 	

## 7.2 Conducted Emissions

Test Requirement:	FCC Part15 C Section 15.207														
Test Method:	ANSI C63.10:2013														
Test Frequency Range:	150KHz to 30MHz														
Class / Severity:	Class B														
Receiver setup:	RBW=9KHz, VBW=30KHz, Sweep time=auto														
Limit:	<table border="1"> <thead> <tr> <th rowspan="2">Frequency range (MHz)</th> <th colspan="2">Limit (dBuV)</th> </tr> <tr> <th>Quasi-peak</th> <th>Average</th> </tr> </thead> <tbody> <tr> <td>0.15-0.5</td> <td>66 to 56*</td> <td>56 to 46*</td> </tr> <tr> <td>0.5-5</td> <td>56</td> <td>46</td> </tr> <tr> <td>5-30</td> <td>60</td> <td>50</td> </tr> </tbody> </table> <p>* Decreases with the logarithm of the frequency.</p>	Frequency range (MHz)	Limit (dBuV)		Quasi-peak	Average	0.15-0.5	66 to 56*	56 to 46*	0.5-5	56	46	5-30	60	50
Frequency range (MHz)	Limit (dBuV)														
	Quasi-peak	Average													
0.15-0.5	66 to 56*	56 to 46*													
0.5-5	56	46													
5-30	60	50													
Test setup:	<p>Remark  E.U.T: Equipment Under Test  LISN: Line Impedance Stabilization Network  Test table height=0.8m</p>														
Test procedure:	<ol style="list-style-type: none"> <li>1. The E.U.T and simulators are connected to the main power through a line impedance stabilization network (L.I.S.N.). This provides a 50ohm/50uH coupling impedance for the measuring equipment.</li> <li>2. The peripheral devices are also connected to the main power through a LISN that provides a 50ohm/50uH coupling impedance with 50ohm termination. (Please refer to the block diagram of the test setup and photographs).</li> <li>3. Both sides of A.C. line are checked for maximum conducted interference. In order to find the maximum emission, the relative positions of equipment and all of the interface cables must be changed according to ANSI C63.10:2013 on conducted measurement.</li> </ol>														
Test Instruments:	Refer to section 6.0 for details														
Test mode:	Refer to section 5.3 for details														
Test results:	Pass														

### Measurement data:

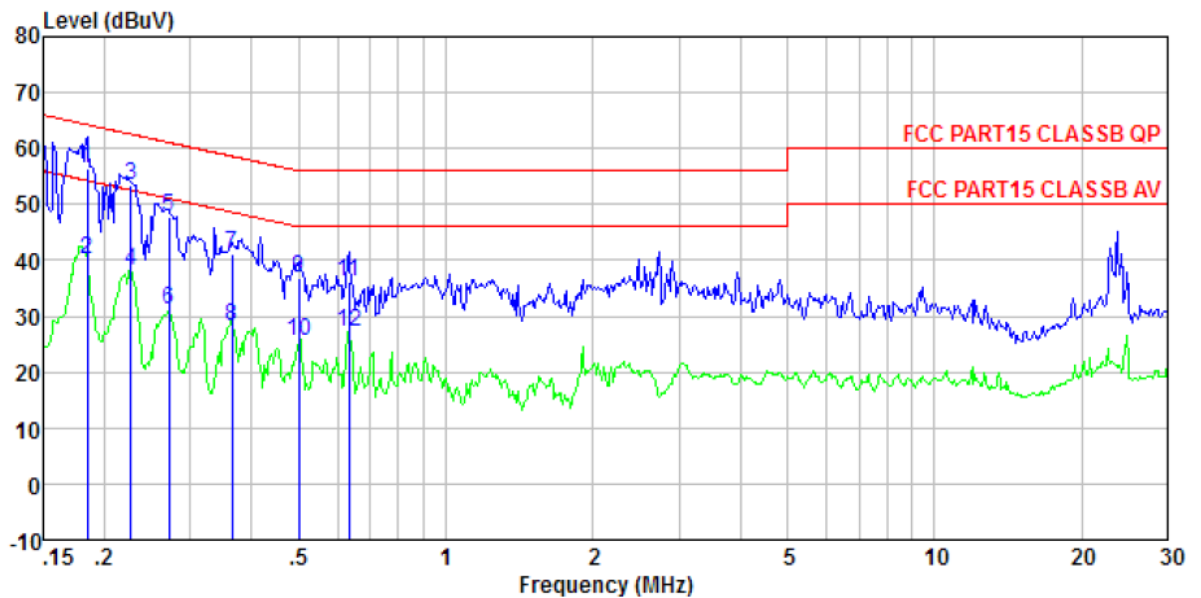
Line:



Site : Shielded room  
 Condition : FCC PART15 CLASSB QP LISN-2013 LINE  
 Job No. : 0327  
 Test mode : Transmitting mode  
 Test Engineer: Sky

	Read Freq	LISN Level	LISN Factor	Cable Loss	Level	Limit Line	Over Limit	Remark
	MHz	dBuV	dB	dB	dBuV	dBuV	dB	
1	0.172	56.94	0.15	0.12	57.21	64.86	-7.65	QP
2	0.172	38.16	0.15	0.12	38.43	54.86	-16.43	Average
3	0.216	53.85	0.13	0.13	54.11	62.96	-8.85	QP
4	0.216	37.44	0.13	0.13	37.70	52.96	-15.26	Average
5	0.267	47.60	0.11	0.11	47.82	61.20	-13.38	QP
6	0.267	29.61	0.11	0.11	29.83	51.20	-21.37	Average
7	0.367	41.24	0.11	0.10	41.45	58.56	-17.11	QP
8	0.367	27.21	0.11	0.10	27.42	48.56	-21.14	Average
9	0.505	37.08	0.12	0.11	37.31	56.00	-18.69	QP
10	0.505	25.71	0.12	0.11	25.94	46.00	-20.06	Average
11	0.634	33.86	0.13	0.13	34.12	56.00	-21.88	QP
12	0.634	25.86	0.13	0.13	26.12	46.00	-19.88	Average

**Neutral:**



Site : Shielded room  
 Condition : FCC PART15 CLASSB QP LISN-2013 NEUTRAL  
 Job No. : 0327  
 Test mode : Transmitting mode  
 Test Engineer: Sky

	Read Freq	LISN Level	LISN Factor	Cable Loss	Level	Limit Line	Over Limit	Remark
	MHz	dBuV	dB	dB	dBuV	dBuV	dB	
1	0.184	56.06	0.07	0.13	56.26	64.28	-8.02	QP
2	0.184	40.00	0.07	0.13	40.20	54.28	-14.08	Average
3	0.227	53.19	0.06	0.12	53.37	62.57	-9.20	QP
4	0.227	37.85	0.06	0.12	38.03	52.57	-14.54	Average
5	0.272	47.74	0.06	0.11	47.91	61.07	-13.16	QP
6	0.272	31.12	0.06	0.11	31.29	51.07	-19.78	Average
7	0.365	41.11	0.06	0.10	41.27	58.61	-17.34	QP
8	0.365	28.02	0.06	0.10	28.18	48.61	-20.43	Average
9	0.499	36.70	0.06	0.11	36.87	56.01	-19.14	QP
10	0.499	25.52	0.06	0.11	25.69	46.01	-20.32	Average
11	0.634	35.94	0.07	0.13	36.14	56.00	-19.86	QP
12	0.634	26.89	0.07	0.13	27.09	46.00	-18.91	Average

**Notes:**

1. An initial pre-scan was performed on the line and neutral lines with peak detector.
2. Quasi-Peak and Average measurement were performed at the frequencies with maximized peak emission.
3. Final Level = Receiver Read level + LISN Factor + Cable Loss

## 7.3 Radiated Emission Method

Test Requirement:	FCC Part15 C Section 15.209				
Test Method:	ANSI C63.10:2013				
Test Frequency Range:	30MHz to 25GHz				
Test site:	Measurement Distance: 3m				
Receiver setup:	Frequency	Detector	RBW	VBW	Remark
	30MHz-1GHz	Quasi-peak	120KHz	300KHz	Quasi-peak Value
	Above 1GHz	Peak	1MHz	3MHz	Peak Value
Peak		1MHz	10Hz	Average Value	
Limit: (Field strength of the fundamental signal)	Frequency	Limit (dBuV/m @3m)		Remark	
	2400MHz-2483.5MHz	94.00		Average Value	
Limit: (Spurious Emissions)	Frequency	Limit (dBuV/m @3m)		Remark	
	30MHz-88MHz	40.00		Quasi-peak Value	
	88MHz-216MHz	43.50		Quasi-peak Value	
	216MHz-960MHz	46.00		Quasi-peak Value	
	960MHz-1GHz	54.00		Quasi-peak Value	
	Above 1GHz	54.00		Average Value	
74.00		Peak Value			
Limit: (band edge)	Emissions radiated outside of the specified frequency bands, except for harmonics, shall be attenuated by at least 50 dB below the level of the fundamental or to the general radiated emission limits in Section 15.209, whichever is the lesser attenuation.				
Test setup:	<p>Below 1GHz</p> <p>Above 1GHz</p>				

	<p>The diagram illustrates the test setup. An EUT (Equipment Under Test) is placed on a turn table. The turn table is positioned 3 meters away from an antenna tower. The antenna tower has a horn antenna mounted on it. The antenna height is varied from 1 meter to 4 meters above the ground. The turn table is 1.5 meters high. A spectrum analyzer is connected to the antenna tower via an amplifier.</p>
<p>Test Procedure:</p>	<ol style="list-style-type: none"> <li>1. The EUT was placed on the top of a rotating table (0.8m for below 1GHz and 1.5 meters for above 1GHz) above the ground at a 3 meter camber. The table was rotated 360 degrees to determine the position of the highest radiation.</li> <li>2. The EUT was set 3 meters away from the interference-receiving antenna, which was mounted on the top of a variable-height antenna tower.</li> <li>3. The antenna height is varied from one meter to four meters above the ground to determine the maximum value of the field strength. Both horizontal and vertical polarizations of the antenna are set to make the measurement.</li> <li>4. For each suspected emission, the EUT was arranged to its worst case and then the antenna was tuned to heights from 1 meter to 4 meters and the rota table was turned from 0 degrees to 360 degrees to find the maximum reading.</li> <li>5. The test-receiver system was set to Peak Detect Function and Specified Bandwidth with Maximum Hold Mode.</li> <li>6. If the emission level of the EUT in peak mode was 10dB lower than the limit specified, then testing could be stopped and the peak values of the EUT would be reported. Otherwise the emissions that did not have 10dB margin would be re-tested one by one using peak, quasi-peak or average method as specified and then reported in a data sheet.</li> </ol>
<p>Test Instruments:</p>	<p>Refer to section 6.0 for details</p>
<p>Test mode:</p>	<p>Refer to section 5.3 for details</p>
<p>Test results:</p>	<p>Pass</p>

**Measurement data:**

### 7.3.1 Field Strength of The Fundamental Signal

**Peak value:**

Frequency (MHz)	Read Level (dBuV)	Antenna Factor (dB/m)	Cable Loss (dB)	Preamp Factor (dB)	Level (dBuV/m)	Limit Line (dBuV/m)	Over Limit (dB)	polarization
2476.00	91.84	27.52	5.47	33.92	90.91	114	-23.09	Vertical
2480.50	97.96	27.52	5.47	33.92	97.03	114	-16.97	Vertical
2476.00	92.46	27.52	5.47	33.92	91.53	114	-22.47	Horizontal
2480.50	97.84	27.52	5.47	33.92	96.91	114	-17.09	Horizontal

**Average value:**

Frequency (MHz)	Read Level (dBuV)	Antenna Factor (dB/m)	Cable Loss (dB)	Preamp Factor (dB)	Level (dBuV/m)	Limit Line (dBuV/m)	Over Limit (dB)	polarization
2476.00	78.76	27.52	5.47	33.92	77.83	94.00	-16.17	Vertical
2480.50	81.61	27.52	5.47	33.92	80.68	94.00	-13.32	Vertical
2476.00	82.28	27.52	5.47	33.92	81.35	94.00	-12.65	Horizontal
2480.50	81.61	27.52	5.47	33.92	80.68	94.00	-13.32	Horizontal

*Remark:*

1. *Final Level = Receiver Read level + Antenna Factor + Cable Loss – Pre-amplifier Factor*
2. *RBW=3MHz; VBW=3MHz, peak detector for PK Value, and RMS detector for AV value*

## 7.3.2 Spurious emissions

### ■ Below 1GHz

Frequency (MHz)	Read Level (dBuV)	Antenna Factor (dB/m)	Cable Loss (dB)	Preamplifier Factor (dB)	Level (dBuV/m)	Limit Line (dBuV/m)	Over Limit (dB)	polarization
38.888	44.48	15.3	0.65	30.05	30.38	40	-9.62	Vertical
66.266	45.76	12.16	0.91	29.88	28.95	40	-11.05	Vertical
96.775	38.87	14.97	1.17	29.71	25.3	43.5	-18.2	Vertical
147.921	47.18	10.24	1.56	29.42	29.56	43.5	-13.94	Vertical
268.485	33.1	14.34	2.21	29.79	19.86	46	-26.14	Vertical
588.905	29.24	20.29	3.68	29.3	23.91	46	-22.09	Vertical
55.221	36.59	15	0.82	29.96	22.45	40	-17.55	Horizontal
94.428	34.45	14.75	1.15	29.72	20.63	43.5	-22.87	Horizontal
138.387	42.98	10.3	1.5	29.46	25.32	43.5	-18.18	Horizontal
226.099	37.78	13.46	1.99	29.45	23.78	46	-22.22	Horizontal
298.268	37.51	15	2.35	29.99	24.87	46	-21.13	Horizontal
580.703	31.12	20.14	3.65	29.3	25.61	46	-20.39	Horizontal



■ Above 1GHz

Test channel:	Lowest channel(2476MHz)
---------------	-------------------------

**Peak value:**

Frequency (MHz)	Read Level (dBuV)	Antenna Factor (dB/m)	Cable Loss (dB)	Preamp Factor (dB)	Level (dBuV/m)	Limit Line (dBuV/m)	Over Limit (dB)	polarization
4952.00	36.96	31.91	8.71	32.16	31.89	74.00	-28.54	Vertical
7428.00	27.76	36.56	11.79	31.80	45.23	74.00	-29.69	Vertical
9904.00	27.26	38.81	14.35	31.85	49.23	74.00	-25.43	Vertical
12380.00	27.70	38.78	15.27	35.33	42.90	74.00	-27.58	Vertical
14856.00	26.68	41.52	17.39	35.30	48.97	74.00	-23.71	Vertical
17332.00	25.75	46.19	18.98	34.38	56.54	74.00	-17.46	Vertical
4952.00	31.07	31.91	8.71	32.16	39.52	74.00	-34.43	Horizontal
7428.00	26.94	36.56	11.79	31.80	43.37	74.00	-30.51	Horizontal
9904.00	26.68	38.81	14.35	31.85	49.44	74.00	-26.01	Horizontal
12380.00	26.94	38.78	15.27	35.33	44.13	74.00	-28.34	Horizontal
14856.00	26.25	41.52	17.39	35.30	48.38	74.00	-24.14	Horizontal
17332.00	25.00	46.19	18.98	34.38	55.79	74.00	-18.21	Horizontal

**Average value:**

Frequency (MHz)	Read Level (dBuV)	Antenna Factor (dB/m)	Cable Loss (dB)	Preamp Factor (dB)	Level (dBuV/m)	Limit Line (dBuV/m)	Over Limit (dB)	polarization
4952.00	31.45	31.91	8.71	32.16	31.89	54.00	-14.05	Vertical
7428.00	23.31	36.56	11.79	31.80	38.78	54.00	-14.14	Vertical
9904.00	20.57	38.81	14.35	31.85	38.54	54.00	-12.12	Vertical
12380.00	22.41	38.78	15.27	35.33	37.61	54.00	-12.87	Vertical
14856.00	26.68	41.52	17.39	35.30	39.58	54.00	-9.10	Vertical
17332.00	10.53	46.19	18.98	34.38	41.32	54.00	-12.68	Vertical
4952.00	28.56	31.91	8.71	32.16	32.00	54.00	-16.94	Horizontal
7428.00	22.49	36.56	11.79	31.80	37.91	54.00	-14.96	Horizontal
9904.00	20.99	38.81	14.35	31.85	37.13	54.00	-11.70	Horizontal
12380.00	22.66	38.78	15.27	35.33	37.85	54.00	-12.62	Horizontal
14856.00	21.86	41.52	17.39	35.30	39.00	54.00	-8.53	Horizontal
17332.00	10.79	46.19	18.98	34.38	41.58	54.00	-12.42	Horizontal

*Remark:*

1. *Final Level = Receiver Read level + Antenna Factor + Cable Loss – Pre-amplifier Factor*
2. *“\*”*, means this data is the too weak instrument of signal is unable to test.

Test channel:	Highest channel (2480.50MHz)
---------------	------------------------------

**Peak value:**

Frequency (MHz)	Read Level (dBuV)	Antenna Factor (dB/m)	Cable Loss (dB)	Preamp Factor (dB)	Level (dBuV/m)	Limit Line (dBuV/m)	Over Limit (dB)	polarization
4961.00	41.26	31.93	8.73	32.16	40.80	74.00	-24.24	Vertical
7441.50	24.43	36.59	11.79	31.78	41.30	74.00	-12.97	Vertical
9922.00	27.83	38.81	14.38	31.88	47.45	74.00	-29.57	Vertical
12402.50	20.21	38.76	15.27	35.27	43.82	74.00	-12.48	Vertical
14883.00	27.9	41.52	17.39	35.45	47.07	74.00	-24.79	Vertical
17363.50	25.86	46.19	18.98	34.52	56.51	74.00	-17.49	Vertical
4961.00	36.17	31.93	8.73	32.16	42.00	74.00	-29.33	Horizontal
7441.50	23.72	36.59	11.79	31.78	42.59	74.00	-13.68	Horizontal
9922.00	32.12	38.81	14.38	31.88	47.80	74.00	-25.28	Horizontal
12402.50	19.73	38.76	15.27	35.27	45.06	74.00	-12.96	Horizontal
14883.00	27.42	41.52	17.39	35.45	47.85	74.00	-25.27	Horizontal
17363.50	25.44	46.19	18.98	34.52	56.09	74.00	-17.91	Horizontal

**Average value:**

Frequency (MHz)	Read Level (dBuV)	Antenna Factor (dB/m)	Cable Loss (dB)	Preamp Factor (dB)	Level (dBuV/m)	Limit Line (dBuV/m)	Over Limit (dB)	polarization
4961.00	30.75	31.93	8.73	32.16	33.29	54.00	-14.75	Vertical
7441.50	41.26	36.59	11.79	31.78	36.90	54.00	-24.24	Vertical
9922.00	24.43	38.81	14.38	31.88	37.75	54.00	-12.97	Vertical
12402.50	27.83	38.76	15.27	35.27	36.58	54.00	-29.57	Vertical
14883.00	20.21	41.52	17.39	35.45	38.53	54.00	-12.48	Vertical
17363.50	8.50	46.19	18.98	34.52	39.15	54.00	-14.85	Vertical
4961.00	30.65	31.93	8.73	32.16	34.48	54.00	-14.85	Horizontal
7441.50	36.17	36.59	11.79	31.78	38.18	54.00	-29.33	Horizontal
9922.00	23.72	38.81	14.38	31.88	38.10	54.00	-13.68	Horizontal
12402.50	32.12	38.76	15.27	35.27	38.82	54.00	-25.28	Horizontal
14883.00	19.73	41.52	17.39	35.45	39.31	54.00	-12.96	Horizontal
17363.50	9.08	46.19	18.98	34.52	39.73	54.00	-14.27	Horizontal

## Remark:

- Final Level = Receiver Read level + Antenna Factor + Cable Loss – Pre-amplifier Factor
- “\*\*”, means this data is the too weak instrument of signal is unable to test.
- The emission levels of other frequencies are very lower than the limit and not show in test report.

### 7.3.3 Bandedge emissions

All of the restriction bands were tested, and only the data of worst case was exhibited.

Test channel:	Lowest channel
---------------	----------------

**Peak value:**

Frequency (MHz)	Read Level (dBuV)	Antenna Factor (dB/m)	Cable Loss (dB)	Preamp Factor (dB)	Level (dBuV/m)	Limit Line (dBuV/m)	Over Limit (dB)	Polarization
2390.00	32.96	27.59	5.38	34.01	31.92	74.00	-42.08	Horizontal
2400.00	31.61	27.58	5.39	34.01	30.57	74.00	-43.43	Horizontal
2390.00	33.72	27.59	5.38	34.01	32.69	74.00	-41.31	Vertical
2400.00	32.90	27.58	5.39	34.01	31.86	74.00	-42.14	Vertical

**Average value:**

Frequency (MHz)	Read Level (dBuV)	Antenna Factor (dB/m)	Cable Loss (dB)	Preamp Factor (dB)	Level (dBuV/m)	Limit Line (dBuV/m)	Over Limit (dB)	Polarization
2390.00	28.41	27.59	5.38	34.01	27.37	54.00	-26.63	Horizontal
2400.00	26.12	27.58	5.39	34.01	25.08	54.00	-28.92	Horizontal
2390.00	29.43	27.59	5.38	34.01	28.39	54.00	-25.61	Vertical
2400.00	27.61	27.58	5.39	34.01	26.57	54.00	-27.43	Vertical

Test channel:	Highest channel
---------------	-----------------

**Peak value:**

Frequency (MHz)	Read Level (dBuV)	Antenna Factor (dB/m)	Cable Loss (dB)	Preamp Factor (dB)	Level (dBuV/m)	Limit Line (dBuV/m)	Over Limit (dB)	Polarization
2483.50	63.83	27.53	5.47	33.92	62.91	74.00	-11.09	Horizontal
2500.00	36.74	27.55	5.49	33.9	35.88	74.00	-38.12	Horizontal
2483.50	70.71	27.53	5.47	33.92	72.79	74.00	-4.21	Vertical
2500.00	47.92	27.55	5.49	33.9	47.06	74.00	-26.94	Vertical

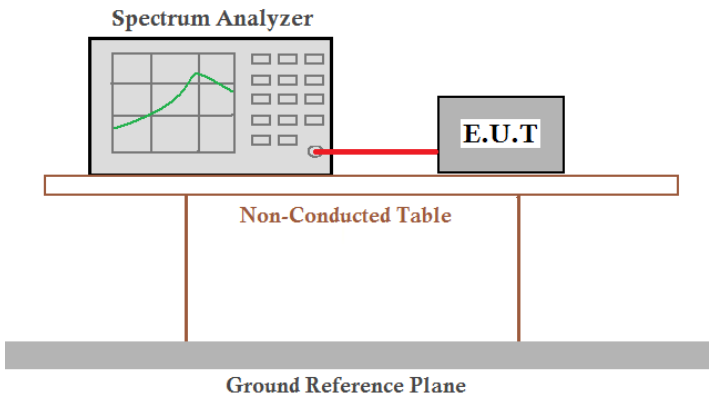
**Average value:**

Frequency (MHz)	Read Level (dBuV)	Antenna Factor (dB/m)	Cable Loss (dB)	Preamp Factor (dB)	Level (dBuV/m)	Limit Line (dBuV/m)	Over Limit (dB)	Polarization
2483.50	34.01	27.53	5.47	33.92	33.09	54.00	-20.91	Horizontal
2500.00	26.51	27.55	5.49	33.9	25.65	54.00	-28.35	Horizontal
2483.50	43.42	27.53	5.47	33.92	42.5	54.00	-11.5	Vertical
2500.00	34.65	27.55	5.49	33.9	33.79	54.00	-20.21	Vertical

Remark:

1. Final Level = Receiver Read level + Antenna Factor + Cable Loss – Pre-amplifier Factor

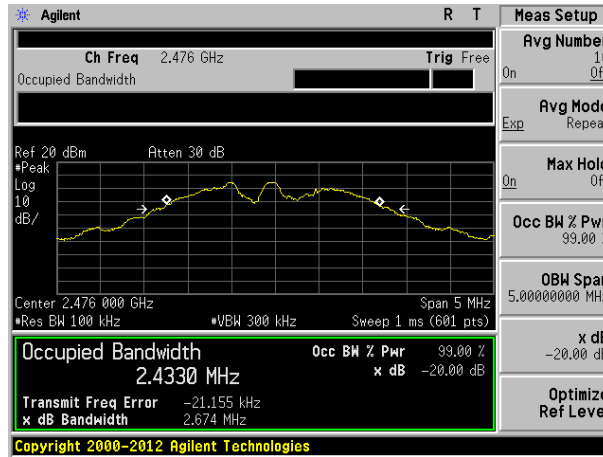
## 7.4 20dB Occupy Bandwidth

Test Requirement:	FCC Part15 C Section 15.249/15.215
Test Method:	ANSI C63.10:2013
Limit:	Operation Frequency range 2400MHz~2483.5MHz
Test setup:	 <p>The diagram illustrates the test setup. A Spectrum Analyzer is connected to an E.U.T. (Equipment Under Test) via a red cable. Both are placed on a Non-Conducted Table, which is supported by two legs. Below the table is a Ground Reference Plane.</p>
Test Instruments:	Refer to section 6.0 for details
Test mode:	Refer to section 5.3 for details
Test results:	Pass

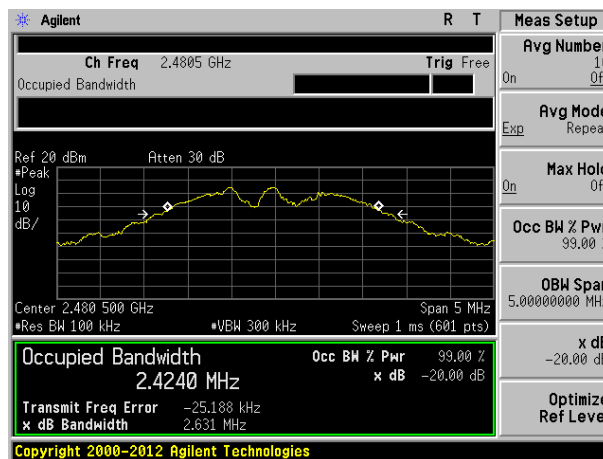
### Measurement Data

Test channel	20dB bandwidth(MHz)	Result
Lowest	2.674	Pass
Highest	2.631	Pass

Test plot as follows:



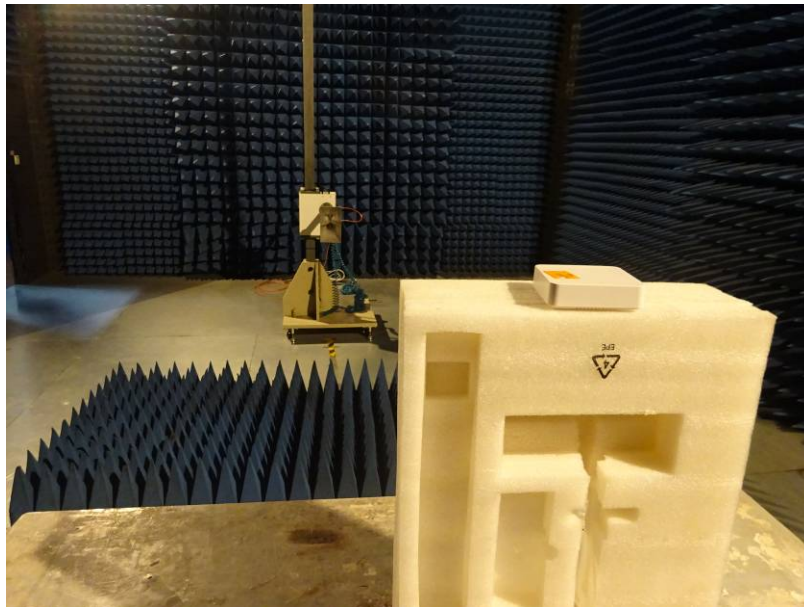
Lowest channel



Highest channel

## 8 Test Setup Photo

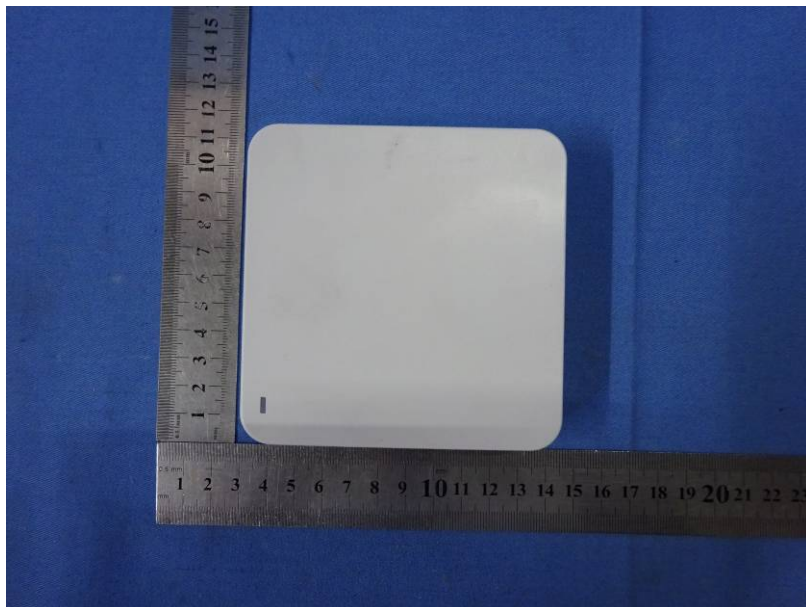
Radiated Emission



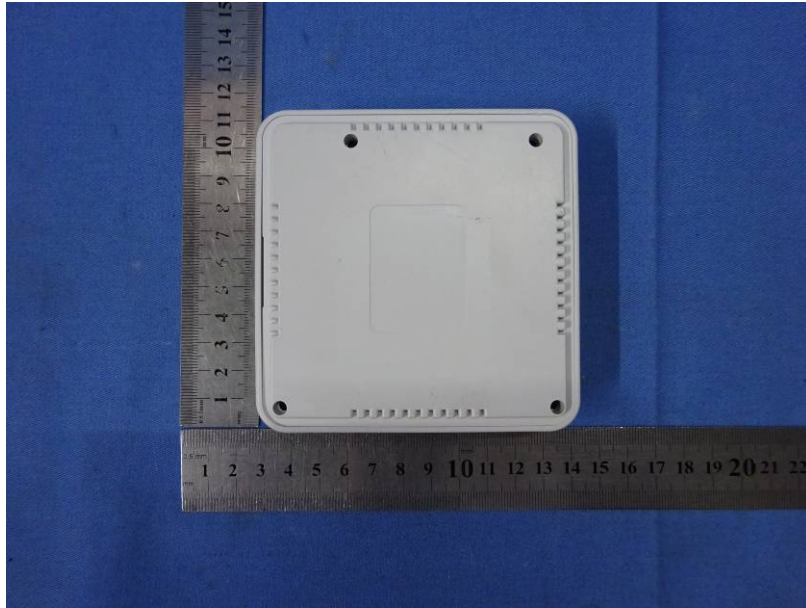
## Conducted Emission

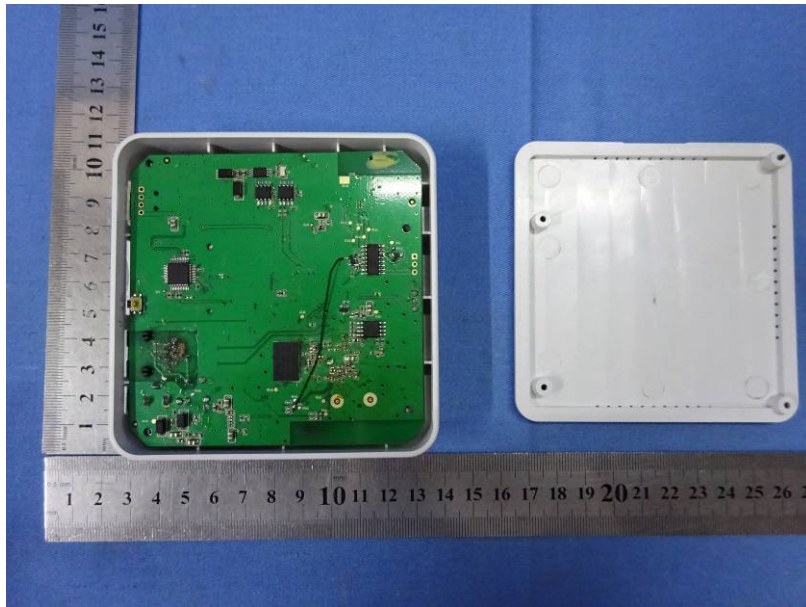
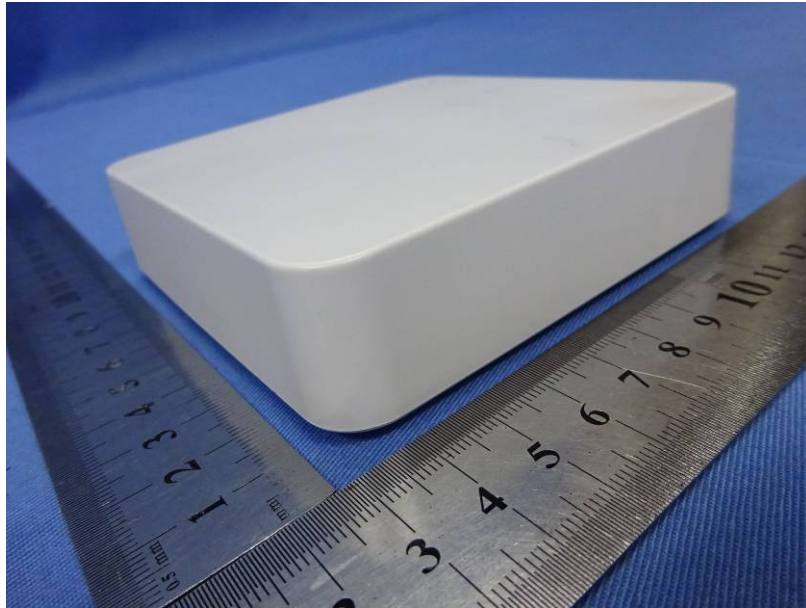


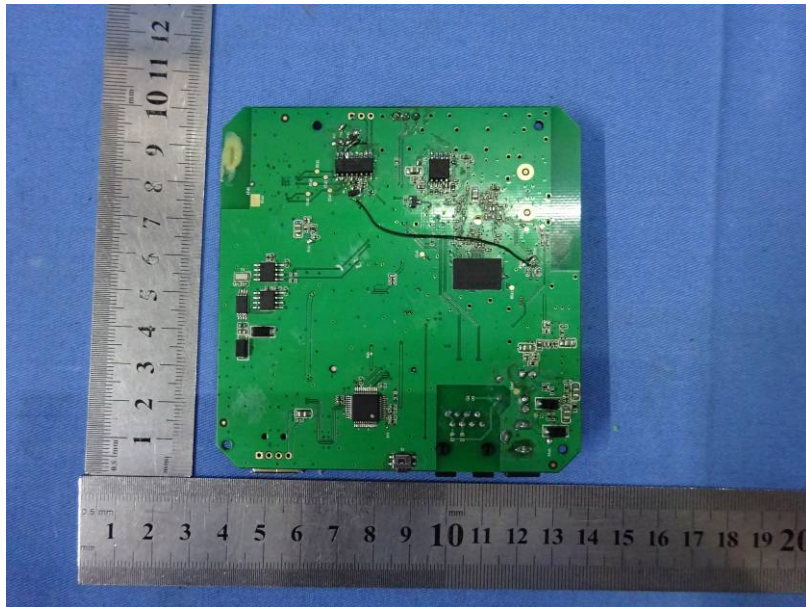
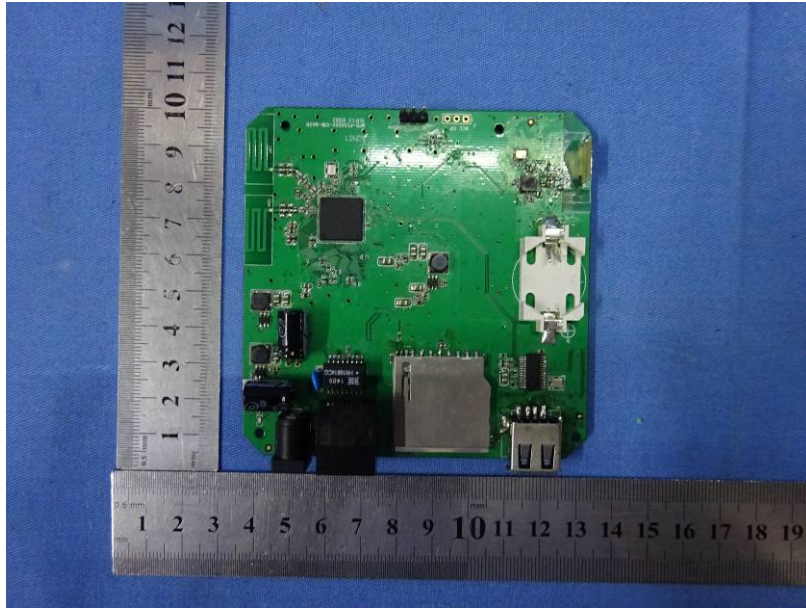
## 9 EUT Constructional Details



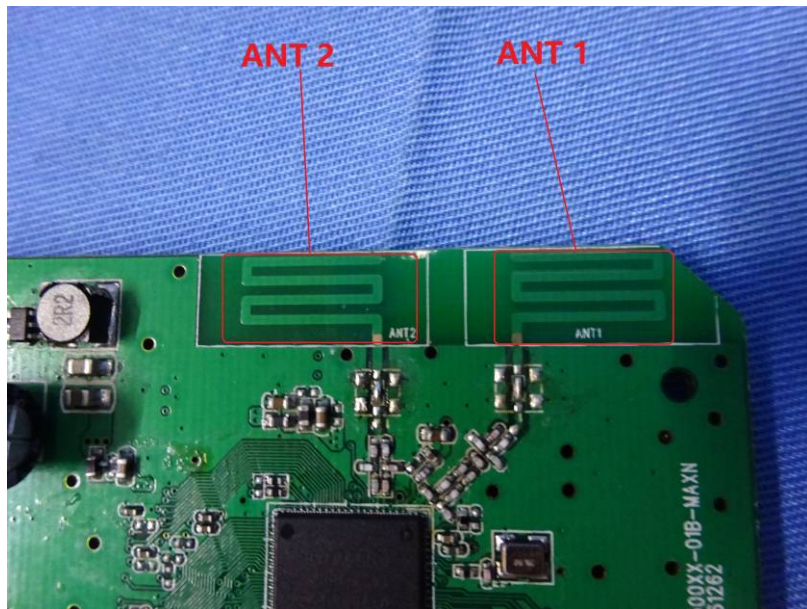
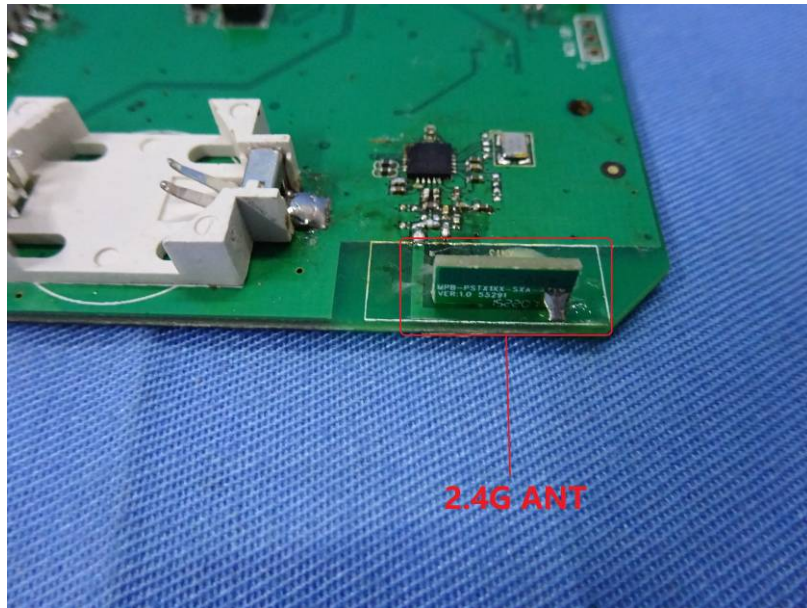












----- End -----