

Made for



iPod



iPhone



iPad




MFi account:218583



Champ On

畅飞博科技

HomeKit Outlet

-  **1** Introduction
-  **2** Milestones
-  **3** Functions and usage



Content



Introduction

Introduction



Works with
Apple HomeKit

One of the earliest HomeKit product

MFi PPID:218583-0004



Odesign

Introduction

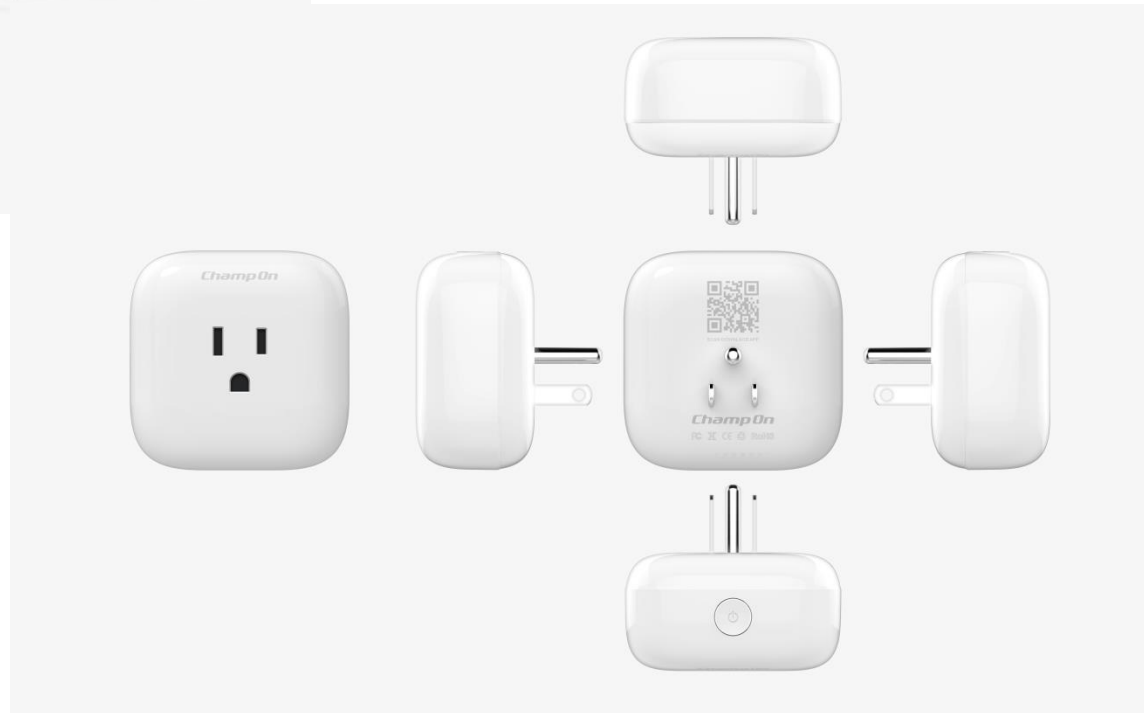


Major Features:

- ◆ On/Off remote control
- ◆ Electric meter(custom)
- ◆ Timer (custom)
- ◆ Outlet in use
- ◆ WAC installation

Electric spec:

- ◆ US standard
- ◆ 100V~~120V
- ◆ $\leq 15A$
- ◆ $\leq 1800W$



New HomeKit Coming...



EU Version



China Version

New HomeKit Coming...

- Outlet + Sensors



- Multiple Receptacles





Milestones



Milestones

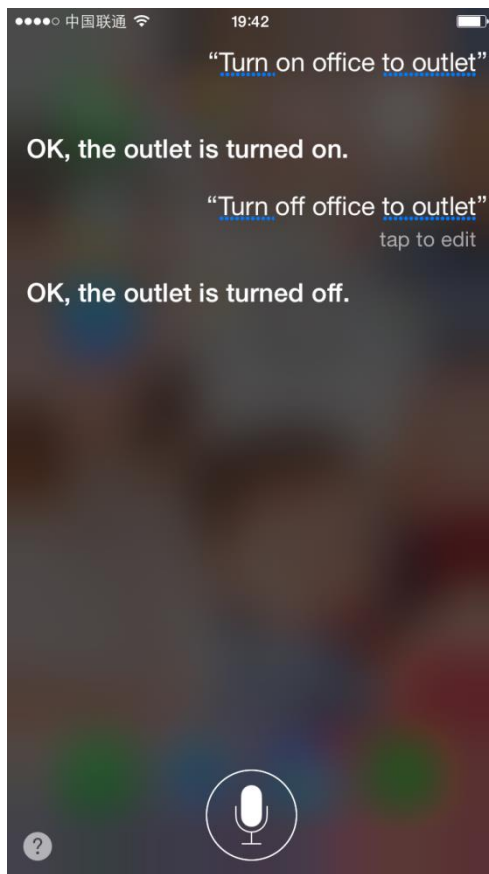


Samples ready!

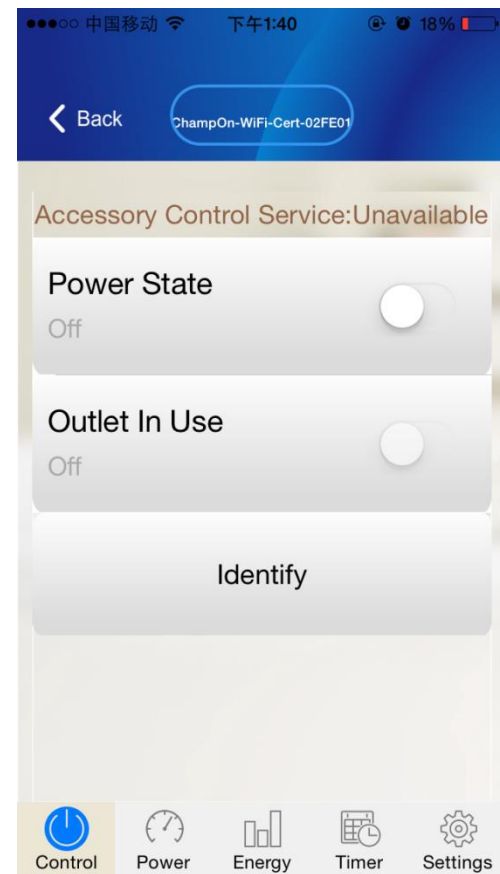


Functions and usage

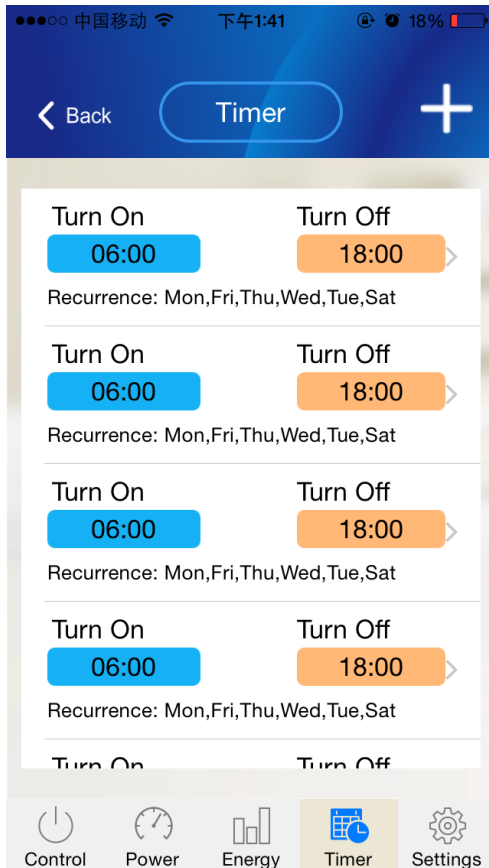
1. Siri Control;



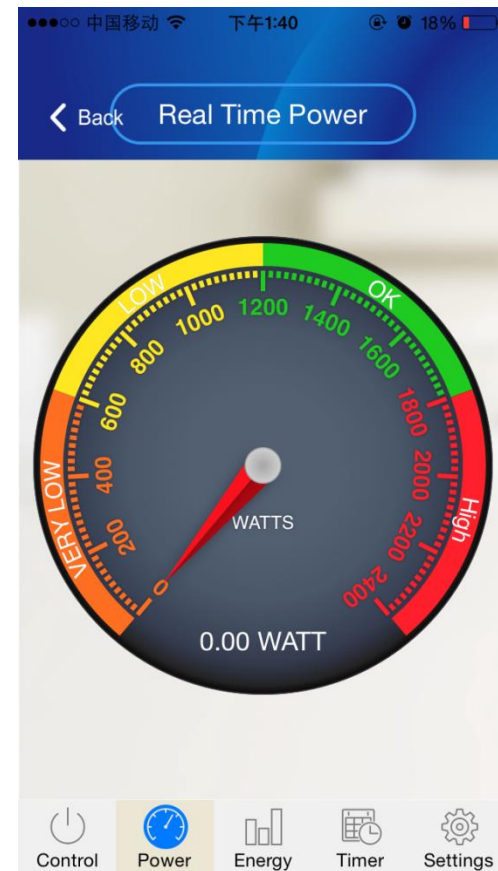
2. App Control;



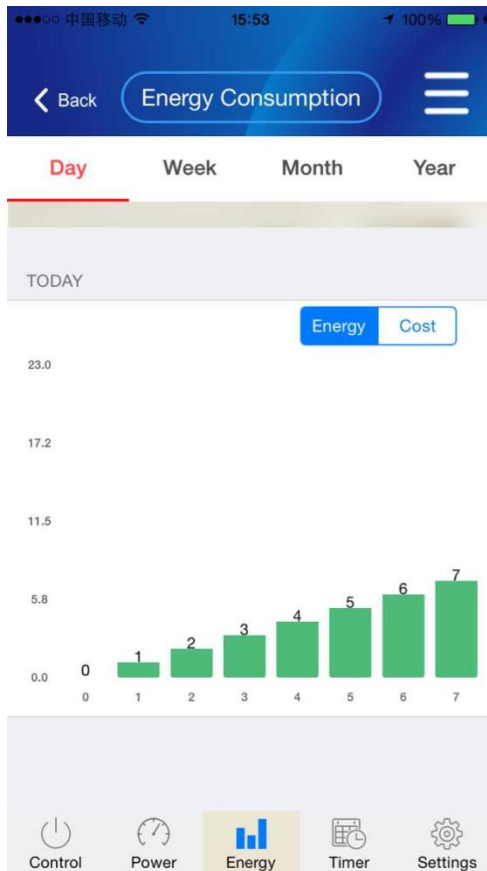
3. Timer Control;



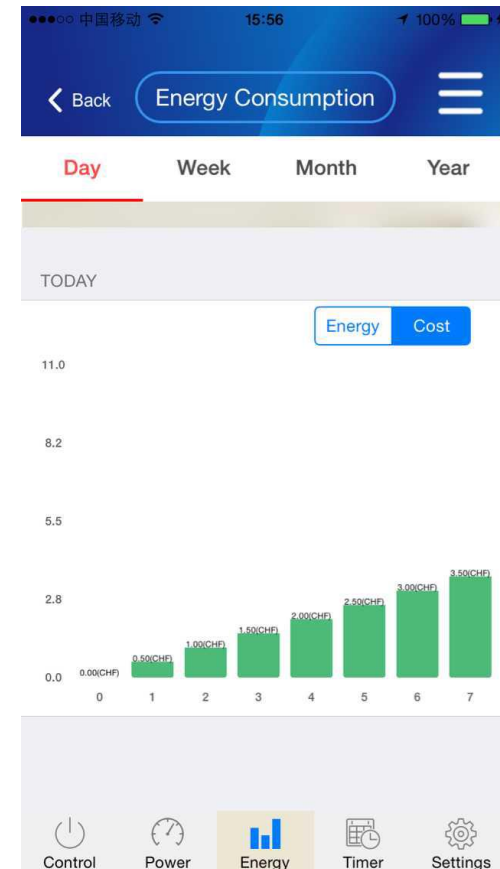
4. Real-time power;



5. Historic records (Day/week/month/year)



6. Energy/Cost display





Functions and usage

7. OTA upgrade
8. Identify
9. Outlet in use
10. Recent Operating Time

Note: This equipment has been tested and found to comply with the limits for a Class B digital device, pursuant to part 15 of the FCC Rules. These limits are designed to

provide reasonable protection against harmful interference in a residential installation. This equipment generates, uses and can radiate radio frequency energy and, if not installed and used in accordance with the instructions, may cause harmful interference to radio communications. However, there is no guarantee that interference will not occur in a particular installation. If this equipment does cause harmful interference to radio or television reception, which can be determined by turning the equipment off and on, the user is encouraged to try to correct the interference by one or more of the following measures:

- Reorient or relocate the receiving antenna.
- Increase the separation between the equipment and receiver.
- Connect the equipment into an outlet on a circuit different from that to which the receiver is connected.
- Consult the dealer or an experienced radio/TV technician for help.

FCC Statement:

This device complies with Part 15 of the FCC Rules. Operation is subject to the following two conditions: (1) This device may not cause harmful interference, and

(2) This device must accept any interference received, including interference that may cause undesired operation.

NOTE: THE MANUFACTURER IS NOT RESPONSIBLE FOR ANY RADIO OR TV INTERFERENCE CAUSED BY UNAUTHORIZED MODIFICATIONS TO THIS EQUIPMENT. SUCH MODIFICATIONS COULD VOID THE USER'S AUTHORITY TO OPERATE THE EQUIPMENT.

THANK YOU