

DW1

Door & Window Sensor

QUICK START GUIDE

1. Insert the included lithium battery CR2450, then close the cover.
2. Download and open the KooGeek Home app from the App Store.
3. Log in or sign up for a KooGeek account or simply tap Skip.
4. Open the Bluetooth on your iOS 9.0 or above device. Search for “KooGeek-DW1-XXXXXX” and pair. XXXXXX are the last 6 characters of MAC on your Door & Window Sensor.
5. Tap “+” on the top right corner and follow the on-screen directions to complete network setup.
Note: To add more door & window sensors (or repeat the Door & Window Sensor setup process), tap “+” and you will see the accessory list. Each accessory has an identification code, e.g. KooGeek-DW1-XXXXXX. Make sure the last 6 characters of the identification code are consistent with the last 6 characters of MAC on the back of your Door & Window Sensor. If the accessory list hasn’t been showed, please insert the metal pin into the pinhole of the sensor and hold for 10 seconds to restore the device to factory settings.
6. When prompted, scan the setup code or manually enter the setup code, and then follow the step to add the device to the Home and Room. Please keep the setup code for future use.
7. You can assign a name to your device. For example, you can name your device “Door Sensor”.
8. Set up customized scenes to control other HomeKit-enabled accessories when you open or close a door or window. For example, you can set the “Bedroom” scene of turning on your bedroom light when your bedroom door is opened.
9. For troubleshooting visit www.koogeek.com

Note:

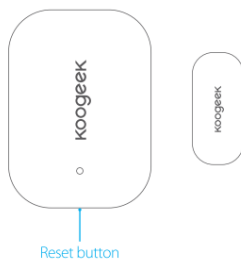
The use of a HomeKit-enabled accessory need the follow permission:

Settings > iCloud > iCloud Drive > Turn On

Settings > iCloud > Keychain > Turn on

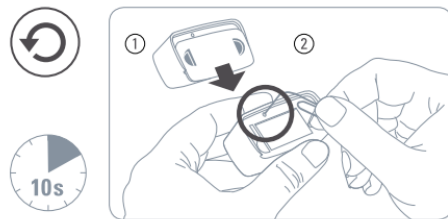
Settings > Privacy > HomeKit > KooGeek Home > Turn On

Door & Window Sensor Overview



Restore Factory Settings

Insert the metal pin into the pinhole and hold for 10 seconds. When the LED flashes green once, it indicates that you have restored the device to factory settings.



Specification

Power supply: 3 V button cell

Battery type: Lithium battery CR2450

Wireless connection: Bluetooth Low Energy

Operating temperature: -20°C ~ 60°C

Color: White

Magnet dimensions: 46 * 33 * 17.1 mm / 1.8 * 1.3 * 0.67 in (L×W×H)

Sensor dimensions: 26 * 12 * 9.2 mm / 1.1 * 0.4 * 0.3 in (L×W×H)

Tips:

1. Mount the sensor on the door / window frame and the magnet on the door / window. If the sensor is used on double doors, mount the sensor on the least-used door and magnet on the most-used door.
2. Avoid mounting sensor in areas where they will be exposed to moisture.
3. Avoid mounting sensor in areas with a large quantity of metal or electrical wires.
4. Do not clean with liquid.
5. The product has a 1-year limited warranty.

Legal

Use of Works with Apple HomeKit logo means.....

Controlling this HomeKit-enabled accessory.....

FCC Warning

This device complies with Part 15 of the FCC Rules. Operation is subject to the following two conditions:

(1) This device may not cause harmful interference, and (2) this device must accept any interference received, including interference that may cause undesired operation.

NOTE 1: Any changes or modifications to this unit not expressly approved by the party responsible for compliance could void the user's authority to operate the equipment.