

# **USB 2.0 Mini Wireless-N Adapter 150Mbps**

**D36**

**Quick install guide**

# Introduction

Thank you for purchasing the Wireless-N USB Adapter,.

Wireless-N USB 2.0 Adapter allows you to connect your laptop or desktop to any Wireless-N networks in your home or office. The Wireless-N (802.11n) USB 2.0 Adapter is great for those who want to upgrade older computers to be able to access the internet over a Wireless-N network.

## Package Contents

- Wireless-N USB Adapter
- Setup CD with user manual
- Quick install guide

## System Requirements•

Notebook or desktop PC with Pentium 1 GHz-compatible or higher processor

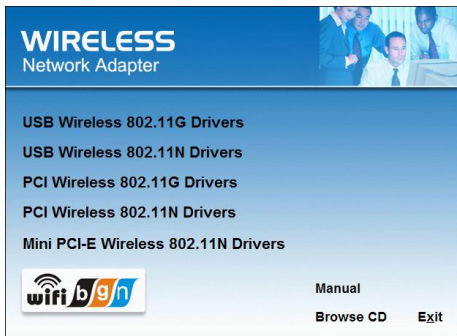
- Windows 2000/XP/Vista/7, MAC OS, Linux
- Available Hi-Speed USB 2.0 port

# Installation

**IMPORTANT:** For proper operation, do *not* connect the Wireless-N USB Adapter to your computer before you install the software. If you do, wait for the Found New Hardware screen to display and click “Cancel”; otherwise, the installation process will likely be adversely affected.

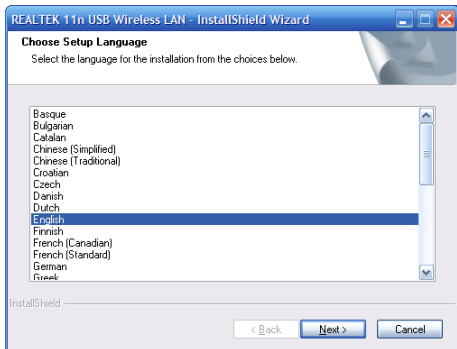
Insert the included setup CD in the CD-ROM Drive and start the Setup.exe program.

To start the installation, please click on the “**USB Wireless 802.11N Drivers**”

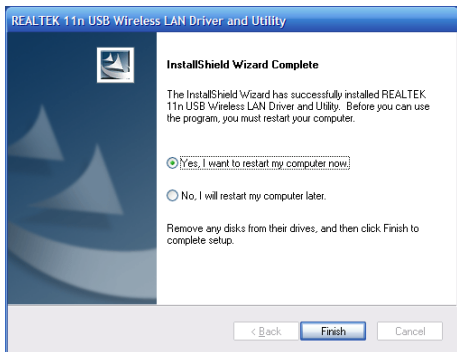


Wait for the installer to run

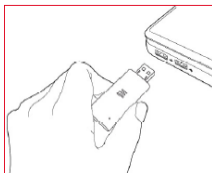
Select Language and click “**Next**” to continue with the installation.



The installer will automatically install the program. When done Select **Yes**, I want to restart my computer now and click **Finish** to reboot your computer.



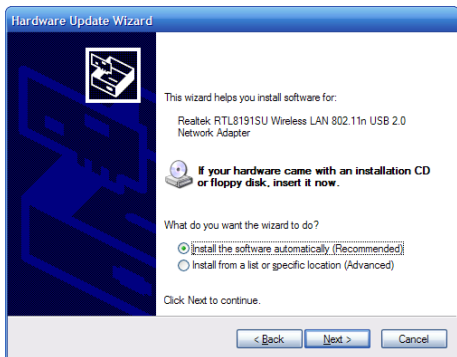
With the computer now turned on, insert the Wireless-N USB Adapter into an open USB 2.0 port.



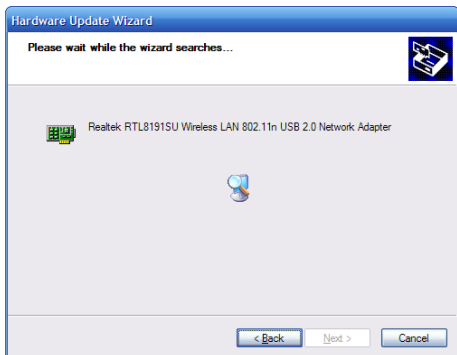
With the Welcome to the Found New Hardware Wizard screen displayed (which is automatic when the adapter is connected to the .computer), select the option "No, not this time" and click "Next."



When prompted with “What do you want the wizard to do?” select “Install the software automatically (Recommended)” and click “Next.”



A status screen will display, indicating that the installation is in progress. No action is needed at this point.

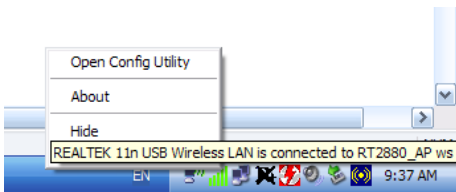


When the Completing the Found New Hardware Wizard screen displays, it indicates that the installation has been successfully completed and your Wireless-N USB Adapter is ready for configuration.

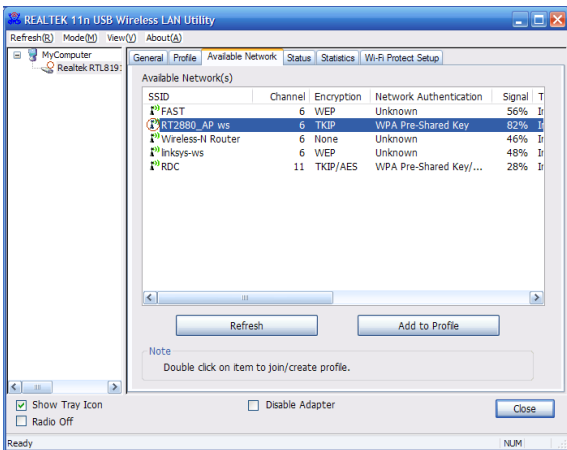
# Configuration

Once the installation is complete, you can configure the Wireless-N USB Adapter to connect to a wireless access point (AP). The wireless configuration utility will start automatically, and you'll also find a tray icon at the lower right in your Windows systems tray.

1. Right-click the Wireless tray icon and select **“Open Config Utility.”**



2. The configuration utility will scan for wireless networks within range. Click **“Refresh”** to refresh the list of available wireless networks. To join a particular network that displays, select it and click **“Add to Profile.”**



3. If the wireless network uses encryption, you need to input the correct encryption key. The configuration utility automatically suggests the correct authentication type (see the drop-down list), and you should not change the suggested value.

Wireless Network Properties

Profile Name: RT2880\_AP ws

Network Name(SSID): RT2880\_AP ws

This is a computer-to-computer(ad hoc) network; wireless access points are not used.

Channel: 6 (2437MHz)

Wireless network security

This network requires a key for the following:

Network Authentication: WPA-PSK

Data encryption: TKIP

ASCII  PASSPHRASE

Key index (advanced): 1

Network key:  
\*\*\*\*\*

Confirm network key:  
\*\*\*\*\*

802.1x configure

EAP TYPE : GTC

Tunnel : Prvision Mode :

Username :

Identity :

Domain :

Password :

Certificate :

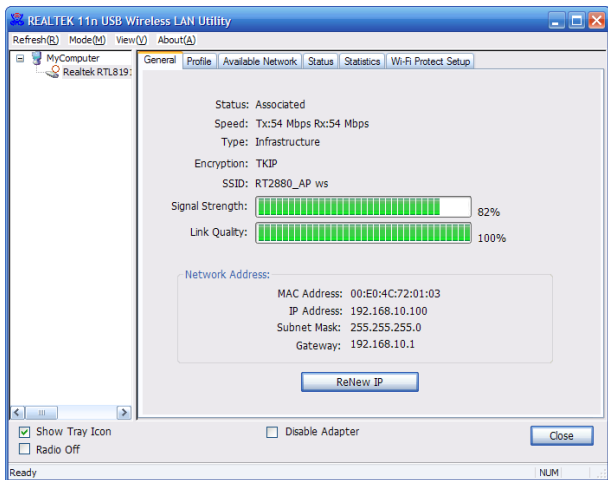
PAC :  Auto Select PAC

OK Cancel

**NOTE:** For WPA/WPA2 networks, you need to select the correct encryption type, as well (AES or TKIP). These settings depend on how the wireless network is set up. Only the owner of the wireless network can provide the required information.

\*\*\* When you select the TKIP encryption mode, the speed would switch to 802.11g 54M following the TKIP protocol

4. If the wireless access point is successfully connected, you'll see.



**NOTE:** 1) For advanced settings and additional features of the Wireless-N USB Adapter, refer to the user manual on the enclosed CD.

2) This device complies with Part 15 of the FCC Rules. Operation is subject to the following two conditions: (1) this device may not cause harmful interference, and (2) this device must accept any interference received, including interference that may cause undesired operation.

3) This device complies with Part 15 of the FCC Rules. Operation is subject to the following two conditions: (1) this device may not cause harmful interference, and (2) this device must accept any interference received, including interference that may cause undesired operation.

Note: This equipment has been tested and found to comply with the limits for a Class B digital device, pursuant to part 15 of the FCC Rules. These limits are desi



igned to provide reasonable protection against harmful interference in a residential installation. This equipment generates, uses and can radiate radio frequency energy and, if not installed and used in accordance with the instructions, may cause harmful interference to radio communications. However, there is no guarantee that interference will not occur in a particular installation. If this equipment does cause harmful interference to radio or television reception, which can be determined by turning the equipment off and on, the user is encouraged to try to correct the interference by one or more of the following measures:

- Reorient or relocate the receiving antenna.
- Increase the separation between the equipment and receiver.
- Connect the equipment into an outlet on a circuit different from that to which the receiver is connected.
- Consult the dealer or an experienced radio/TV technician for help.

Caution: Any changes or modifications not expressly approved by the party responsible for compliance could void the user's authority to operate this equipment.

RF Exposure: The highest measured body SAR value (1g) is: 1.166 W/Kg