

Wireless 802.11AC Dual band USB Adapter

Quick install guide

Model: DC29

REV.1.0AC

Introduction

Thank you for purchasing the Wireless 11AC USB Adapter,.

The AC1200 Dual Band Adapter delivers powerful wireless AC technology to your desktop or notebook computer. Simply plug the adapter into an available USB port and connect to a wireless network to access a secure, high-speed internet connection – 2.4GHz or 5GHz. And with integrated Dual Band technology, you'll have reduced Wi-Fi interference to maximize throughput for faster streaming, gaming, and Skype calls.

Package Contents

- 1 x Wireless 11AC USB Adapter
- 1 x Drivers CD
- 1 x Quick install guide

System Requirements

- At least one USB 3.0 / 2.0 port
- Windows XP / Vista / 7 / 8 (32/64bits)
- MAC OS 10.4 ~ 10.9
- Linux (kernel 2.6.18 ~ 3.10)

changes or modifications not expressly approved by the party responsible for compliance could void the user's authority to operate the equipment. This device complies with Part 15 of the FCC Rules. Operation is subject to the following two conditions:

- (1) this device may not cause harmful interference, and
- (2) this device must accept any interference received, including interference that may cause undesired operation.

This equipment complies with FCC radiation exposure limits set forth for an uncontrolled environment. End user must follow the specific operating instructions for satisfying RF exposure compliance. This transmitter must not be co-located or operating in conjunction with any other antenna or transmitter. RF exposure guidelines require that the device be used at a minimum of 0.5 cm from the human body. Failure to observe this guideline may result in RF exposure exceeding limits.

The portable device is designed to meet the requirements for exposure to radio waves established by the Federal Communications Commission (USA). These requirements set a SAR limit of 1.6 W/kg averaged over one gram of tissue. The highest SAR value reported to the FCC for this device type complies with this limit. The highest SAR value reported to the FCC for this device type when properly worn on the body is 0.517W/kg.

Installation

IMPORTANT: For proper operation, do *not* connect the Wireless 11AC USB Adapter to your computer before you install the software. If you do, wait for the Found New Hardware screen to display and click “Cancel”; otherwise, the installation process will likely be adversely affected.

Insert the included setup CD in the CD-ROM Drive and start the Setup.exe program.

To start the installation, please click on the “**USB 802.11AC Adapter**”

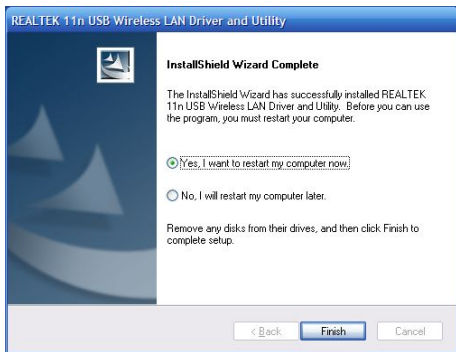


Wait for the installer to run

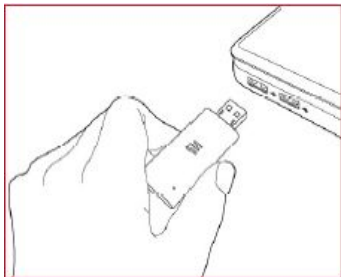
Click “**Next**” to continue with the installation.



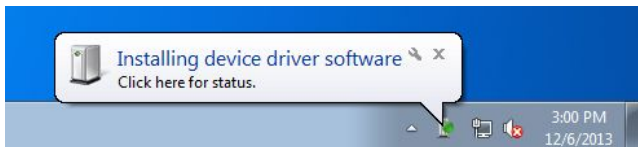
The installer will automatically install the program. When done you will see the picture like below, Pls select **“Yes, I want to restart my computer now”** and click **“Finish”** to reboot your computer.



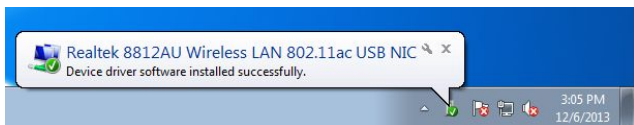
With the computer now turned on, insert the Wireless 11AC USB Adapter into an open USB port.



Status screen will display, indicating that the installation is in progress. No action is needed at this point.



When the Completing the Found New Hardware Wizard screen displays, it indicates that the installation has been successfully completed and your Wireless-N USB Adapter is ready for configuration.



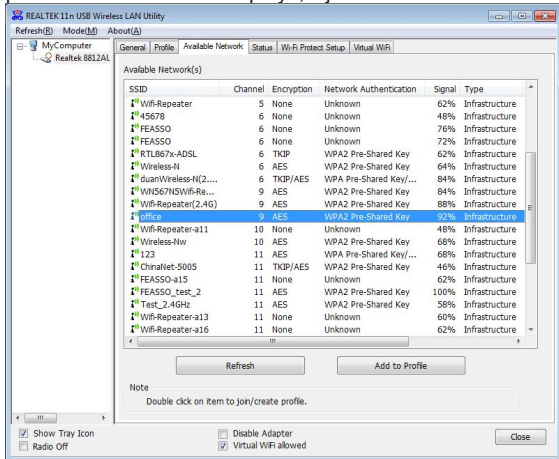
Configuration

Once the installation is complete, you can configure the Wireless 11AC USB Adapter to connect to a wireless access point (AP). The wireless configuration utility will start automatically, and you'll also find a tray icon at the lower right in your Windows systems tray.

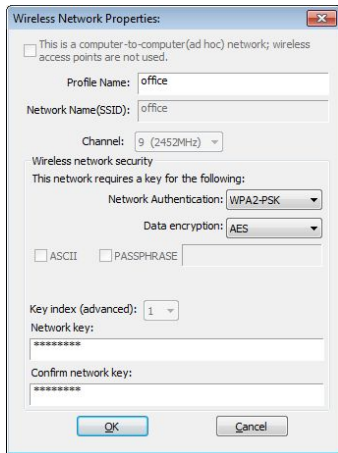
1. Click the tray icon and select the icon  to Open Config Utility.



2. The configuration utility will scan for wireless networks within range. Click **Refresh** to refresh the list of available wireless networks. To join a particular network that displays, just select it and click **Add to Profile.**

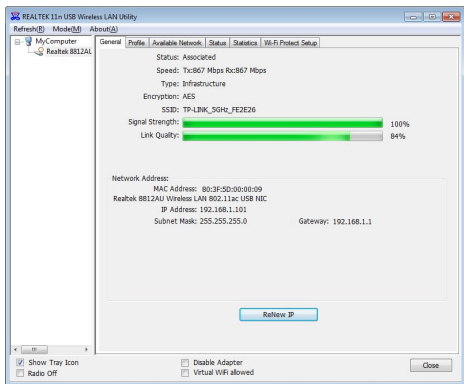


3. If the wireless network uses encryption, you need to input the correct encryption key. The configuration utility automatically suggests the correct authentication type (see the drop-down list), and you should not change the suggested value.



NOTE: For WPA/WPA2 networks, you need to select the correct encryption type, as well (AES or TKIP). These settings depend on how the wireless network is set up. Only the owner of the wireless network can provide the required information.

4. If the wireless access point is successfully connected, you'll see.



NOTE: For advanced settings and additional features of the Wireless 11AC USB Adapter, refer to the user manual on the enclosed CD.

Note: This equipment has been tested and found to comply with the limits for a Class B digital device, pursuant to Part 15 of the FCC Rules. These limits are designed to provide reasonable protection against harmful interference in a residential installation. This equipment generates, uses, and can radiate radio frequency energy, and if not installed and used in accordance with the instructions, may cause harmful interference to radio communications. However, there is no guarantee that interference will not occur in a particular installation. If this equipment does cause harmful interference to radio or television reception, which can be determined by turning the equipment off and on, the user is encouraged to try to correct the interference by one or more of the following measures:

- Reorient or relocate the receiving antenna.
- Increase the separation between the equipment and receiver.
- Connect the equipment into an outlet on a circuit different from that to which the receiver is connected.
- Consult the dealer or an experienced radio/TV technician for help.