

**SAR TEST REPORT**

*For*  
**Globe View Technology Limited**

Sport DV

Model No.: GV100H

FCC ID: 2AHCXGV100H

Report No.: 151229024SZN-002

Issue Date: June 06, 2016

*Prepared by*

Intertek Testing Services Shenzhen Ltd. Kejiyuan Branch

6F, D Block, Huahan Building, Langshan Road, Nanshan District, Shenzhen,  
P. R. China

Telephone: 86-755-8601 0633

Fax: 86-755-8601 6751

- This report is for the exclusive use of Intertek's Client and is provided pursuant to the agreement between Intertek and its Client. Intertek's responsibility and liability are limited to the terms and conditions of the agreement. Intertek assumes no liability to any party, other than to the Client in accordance with the agreement, for any loss, expense or damage occasioned by the use of this report. Only the Client is authorized to copy or distribute this report. Any use of the Intertek name or one of its marks for the sale or advertisement of the tested material, product or service must first be approved in writing by Intertek. The observations and test results referenced from this report are relevant only to the sample tested. This report by itself does not imply that the material, product, or service is or has ever been under an Intertek certification program.
- The test report only allows to be revised only within the report defined retention period unless further standard or the requirement was noticed

## Table of Contents

1	GENERAL INFORMATION .....	3
2	STATEMENT OF COMPLIANCE .....	4
3	EQUIPMENT UNDER TEST (EUT) TECHNICAL DESCRIPTION .....	5
4	AUXILIARY EQUIPMENT DETAILS .....	6
5	TEST FACILITY .....	6
6	EUT ANTENNA LOCATIONS .....	7
7	GUIDANCE STANDARD .....	8
8	RF EXPOSURE .....	9
8.1	LIMITS .....	9
8.2	EVALUATION .....	9
9	SPECIFIC ABSORPTION RATE (SAR) .....	10
9.1	INTRODUCTION .....	10
9.2	SAR DEFINITION .....	10
10	SAR MEASUREMENTS SYSTEM CONFIGURATION .....	11
10.1	SAR MEASUREMENT SET-UP .....	11
10.2	DASY5 E-FIELD PROBE SYSTEM .....	12
10.3	E-FIELD PROBE CALIBRATION .....	13
10.4	OTHER TEST EQUIPMENT .....	13
10.5	SCANNING PROCEDURE .....	16
10.6	DATA STORAGE AND EVALUATION .....	17
10.7	TISSUE-EQUIVALENT LIQUID .....	19
10.8	SYSTEM CHECK .....	20
11	MEASUREMENT PROCEDURES .....	22
11.1	GENERAL DESCRIPTION OF TEST PROCEDURES .....	22
11.2	MEASUREMENT VARIABILITY .....	22
11.3	TEST RESULTS .....	24
12	MEASUREMENT UNCERTAINTY .....	28
13	MAIN TEST INSTRUMENT .....	31
	<b>ANNEX A: Test Layout .....</b>	<b>32</b>
	<b>ANNEX B: System Check Results .....</b>	<b>33</b>
	<b>ANNEX C: Maximum Graph Results .....</b>	<b>35</b>
	<b>ANNEX D: System Validation .....</b>	<b>37</b>
	<b>ANNEX E: Probe, DAE and Dipole Calibration Certificate .....</b>	<b>38</b>

## 1 GENERAL INFORMATION

Applicant:	Globe View Technology Limited 6F, No.129, Xin-Ann 5th Rd., Section 50, Baoan District, Shenzhen, Guangdong Province, China.
Manufacturer:	Kenxen Electronic (SZ) Limited Building A13, Zone D, Minzhu western Industrial Area, Shajing Town, Baoan District, Shenzhen, Guangdong Province.
Product Description:	Sport DV
Model Number:	GV100H
FCC ID	2AHCXGV100H
File Number:	151229024SZN-002
Date of Test:	June 01, 2016

The above equipment was tested by Intertek Testing Services Shenzhen Ltd. Kejiyuan Branch. The test data, data evaluation, test procedures, and equipment configurations shown in this report were made in accordance with the procedures given in IEEE 1528-2013 and KDB 865664. This device is in compliance with Specific Absorption Rate (SAR) for general population/uncontrolled exposure limits (1.6 W/kg) specified in ANSI/IEEE C95.1-1992.

The test results of this report relate only to the tested sample identified in this report.

Prepared and Checked by:

Approved by:

Sign on file

Jenner Liu  
Engineer

---

Kidd Yang  
Senior Project Engineer  
Date: June 06, 2016

## 2 STATEMENT OF COMPLIANCE

Max. Reported SAR (1g)

Test Position		Mode	Channel/Frequency(MHz)	Limit of SAR <sub>1g</sub> : 1.6W/kg	
				Measured SAR <sub>1g</sub> (W/kg)	Reported SAR <sub>1g</sub> (W/kg)
Body	Back Side	802.11b	11/2462	1.24	1.39

The SAR values found for the wifi camera are below the maximum recommended levels of 1.6 W/Kg as averaged over any 1g tissue according to the ANSI C95.1-1992.

The maximum reported SAR value is: 1.39 W/kg (1g).

### Modified Information

Rev.	Summary	Date of Rev.	Report No.
Ver.1.0	Original Report	June 06, 2016	151229024SZN-002

### 3 EQUIPMENT UNDER TEST (EUT) TECHNICAL DESCRIPTION

Characteristics	Description
Description:	SportDV
Model name:	GV100H
Exposure Category:	Uncontrolled Environment/General Population
Test Mode(s):	802.11 b/g/n-HT20/ n-HT40
Operating Frequency Range:	802.11 b/g/n-HT20: 2412MHz – 2462MHz 802.11 n-HT40: 2422MHz – 2452MHz
Modulation:	BPSK, QPSK, 16QAM, 64QAM, CCK, DQPSK, DBPSK
Power Level:	Max Output Power (802.11b:13dBm; 802.11g:11.5dBm; 802.11n-HT20:11dBm; 802.11n-HT40:11dBm)
Antenna Type:	Integral Antenna
Antenna Gain:	0dBi
Dimensions:	4.2cm×4.1cm×4.5cm
Power supply:	<input checked="" type="checkbox"/> DC supply: DC 3.7V internal rechargeable lithium battery or DC 5V from AC Adapter
	<input checked="" type="checkbox"/> Switching Adapter supply: Model: T050100-2A3 Input: AC 100-240V, 50/60Hz, 0.3A Output: DC 5V, 1A
Product Software Version:	V1.1
Product Hardware Version:	V01

**Note:**

1. For more details, please refer to the User's manual of the EUT.
2. The sample under test was selected by the Client.

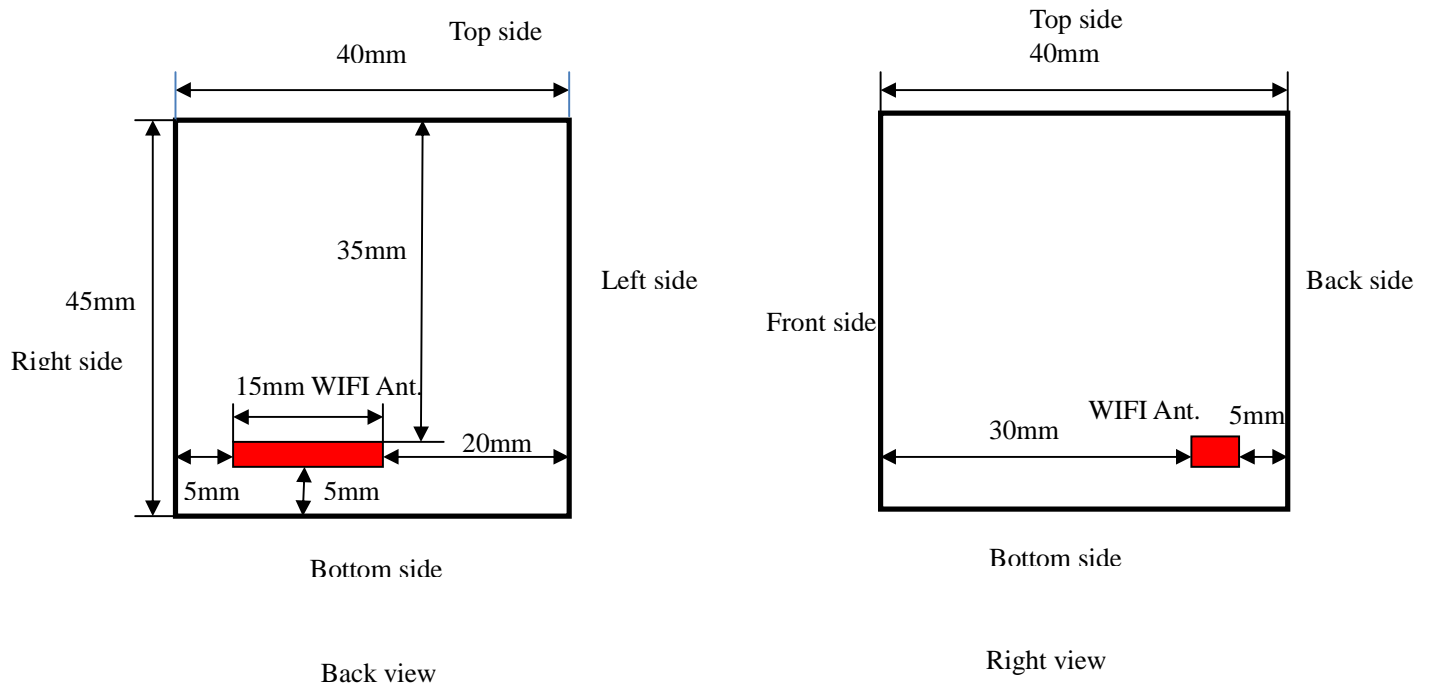
#### 4 AUXILIARY EQUIPMENT DETAILS

AE: Battery	Description
Manufacturer:	/
Model:	/
S/N:	/
capacity:	1300mAh
Voltage:	3.7V

#### 5 TEST FACILITY

Site Description	
EMC Lab.	: Intertek Testing Services Shenzhen Ltd. Kejiyuan Branch was accredited by China National Accreditation Service for Conformity Assessment (CNAS) with registration no.: L0327 and Taiwan Accreditation Foundation (TAF) with registration no.: L2342-151102 according to ISO/IEC 17025: 2005.  Effective Date of TAF Accreditation: January 9, 2014 to January 28, 2017
	Accredited by FCC The Certificate Registration Number is 242492  Accredited by Industry Canada The Certificate Registration Number is 2055C
Name of Firm	: Intertek Testing Services Shenzhen Ltd. Kejiyuan Branch
Site Location	: 6F, D Block, Huahan Building, Langshan Road, Nanshan District, Shenzhen, P. R. China

## 6 EUT ANTENNA LOCATIONS



All Sides for SAR Testing Evaluation:

Mode	Front	Back	Left Side	Right Side	Top Side	Bottom Side
Exemption with Max. Allowed Power (mW)	57.6	9.6	38.4	9.6	67.2	9.6
802.11b	N/A	YES	N/A	YES	N/A	YES

Note: SAR testing exemption according to KDB 447498 D01 Clause 4.3.1 with the following fomula.

a) For 100 MHz to 6 GHz and *test separation distances*  $\leq 50$  mm, the 1-g *SAR test exclusion thresholds* are determined by the following:

$[(\text{max. power of channel, including tune-up tolerance, mW}) / (\text{min. test separation distance, mm})] \cdot [\sqrt{f_{\text{GHz}}}] \leq 3.0$  for 1-g SAR,

\*where  $f_{\text{GHz}}$  is the RF channel transmit frequency in GHz

\*When the minimum test separation distance is  $< 5$  mm, a distance of 5 mm is applied to determine SAR test exclusion.

b) For 100 MHz to 6 GHz and *test separation distances*  $> 50$  mm, the 1-g *SAR test exclusion thresholds* are determined by the following

$\{[\text{Power allowed at numeric threshold for 50 mm in step a)}] + [(\text{test separation distance} - 50 \text{ mm}) \cdot 10]\}$  mW, for  $> 1500$  MHz and  $\leq 6$  GHz

## 7 GUIDANCE STANDARD

The Specific Absorption Rate (SAR) testing specification, method, and procedure for this device is in accordance with the following standards:

- ☒ **RSS-102 Issue 5 (March 2015):** Radio Frequency (RF) Exposure Compliance of Radiocommunication Apparatus (All Frequency Bands).
- ☒ **FCC 47CFR §2.1093** Radiofrequency Radiation Exposure Evaluation: Portable Devices
- ☒ **ANSI C95.1, 1992:** Safety Levels with Respect to Human Exposure to Radio Frequency Electromagnetic Fields, 3 kHz to 300 GHz.(IEEE Std C95.1-1991)
- ☒ **IEEE Std 1528™-2013:** IEEE Recommended Practice for Determining the Peak Spatial-Average Specific Absorption Rate (SAR) in the Human Head from Wireless Communications Devices: Measurement Techniques.
- ☒ **KDB 865664 D01** SAR measurement 100 MHz to 6 GHz v01r04: SAR Measurement Requirements for 100 MHz to 6 GHz
- ☒ **KDB 865664 D02** RF Exposure Reporting v01r02: RF Exposure Compliance Reporting and Documentation Considerations
- ☒ **KDB 447498 D01** D01 General RF Exposure Guidance v06: RF Exposure Procedures and Equipment Authorization Policies For Mobile and Portable Table Device
- ☒ **KDB 248227 D01** 802.11 Wi-Fi SAR v02r02: SAR Guidance for IEEE 802.11 (Wi-Fi) Transmitters

**Remark:**

This portable wireless equipment has been measured in all cases requested by the relevant standards. Test results in Chapter 11 of this test report are below limits specified in the relevant standards for the tested bands only.



## 8 RF EXPOSURE

### 8.1 LIMITS

#### Uncontrolled Environment

Uncontrolled Environments are defined as locations where there is the exposure of individuals who have no knowledge or control of their exposure. The general population/uncontrolled exposure limits are applicable to situations in which the general public may be exposed or in which persons who are exposed as a consequence of their employment may not be made fully aware of the potential for exposure or cannot exercise control over their exposure. Members of the general public would come under this category when exposure is not employment-related; for example, in the case of a wireless transmitter that exposes persons in its vicinity.

Limits for General Population/Uncontrolled Exposure (W/kg)

Whole-Body	Partial-Body	Hands, Wrists, Feet and ankles
0.08	1.6	4.0

Whole-Body SAR is averaged over the entire body, partial-body SAR is averaged over any 1gram of tissue defined as a tissue volume in the shape of a cube. SAR for hands, wrists, feet and ankles is averaged over any 10 grams of tissue defined as a tissue volume in the shape of a cube.

### 8.2 EVALUATION

☒ According to FCC KDB447498 D01 and §1.1310, systems operating under the provisions of this section shall be operated in a manner that ensures that the public is not exposed to radio frequency energy level in excess of the Commission's guidelines.

Routine SAR evaluation refers to that specifically required by § 2.1093, using measurements or computer simulation. Portable transmitters with output power greater than the applicable low threshold require SAR testing to qualify for TCB approval.

## 9 SPECIFIC ABSORPTION RATE (SAR)

### 9.1 INTRODUCTION

SAR is related to the rate at which energy is absorbed per unit mass in an object exposed to a radio field. The SAR distribution in a biological body is complicated and is usually carried out by experimental techniques or numerical modeling. The standard recommends limits for two tiers of groups, occupational/controlled and general population/uncontrolled, based on a person's awareness and ability to exercise control over his or her exposure. In general, occupational/controlled exposure limits are higher than the limits for general population/uncontrolled.

### 9.2 SAR DEFINITION

The SAR definition is the time derivative (rate) of the incremental energy ( $dW$ ) absorbed by (dissipated in) an incremental mass ( $dm$ ) contained in a volume element ( $dv$ ) of a given density ( $\rho$ ). The equation description is as below:

$$SAR = \frac{d}{dt} \left( \frac{dW}{dm} \right) = \frac{d}{dt} \left( \frac{dW}{\rho dv} \right)$$

SAR is expressed in units of Watts per kilogram (W/kg)

SAR measurement can be either related to the temperature elevation in tissue by

$$SAR = c \left( \frac{\delta T}{\delta t} \right)$$

Where:  $C$  is the specific heat capacity,  $\delta T$  is the temperature rise and  $\delta t$  is the exposure duration, or related to the electrical field in the tissue by

$$SAR = \frac{\sigma |E|^2}{\rho}$$

Where:  $\sigma$  is the conductivity of the tissue  $\rho$  is the mass density of tissue and  $E$  is the RMS electrical field strength.

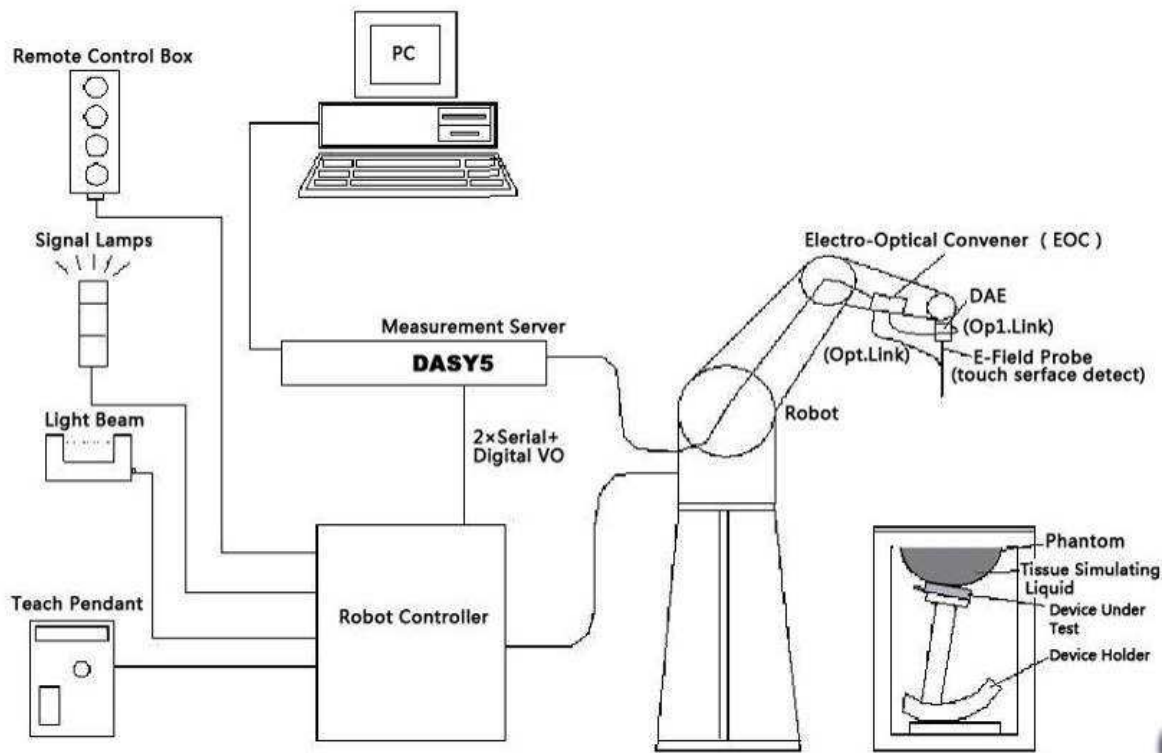
However for evaluating SAR of low power transmitter, electrical field measurement is typically applied.

## 10 SAR MEASUREMENTS SYSTEM CONFIGURATION

### 10.1 SAR MEASUREMENT SET-UP

The DASY5 system for performing compliance tests consists of the following items:

- A standard high precision 6-axis robot (Stäubli TX=RX family) with controller, teach pendant and software. An arm extension for accommodating the data acquisition electronics (DAE).
- An isotropic field probe optimized and calibrated for the targeted measurement.
- A data acquisition electronics (DAE) which performs the signal amplification, signal multiplexing, AD-conversion, offset measurements, mechanical surface detection, collision detection, etc. The unit is battery powered with standard or rechargeable batteries. The signal is optically transmitted to the EOC.
- The Electro-optical converter (EOC) performs the conversion from optical to electrical signals for the digital communication to the DAE. To use optical surface detection, a special version of the EOC is required. The EOC signal is transmitted to the measurement server.
- The function of the measurement server is to perform the time critical tasks such as signal filtering, control of the robot operation and fast movement interrupts.
- The Light Beam used is for probe alignment. This improves the (absolute) accuracy of the probe positioning.
- A computer running Win 7 profesional operating system and the DASY5 software.
- Remote control and teach pendant as well as additional circuitry for robot safety such as warning lamps, etc.
- The phantom, the device holder and other accessories according to the targeted measurement.



Picture 1. SAR Lab Test Measurement Set-up

## 10.2 DASY5 E-FIELD PROBE SYSTEM

The SAR measurements were conducted with the dosimetric probe designed in the classical triangular configuration and optimized for dosimetric evaluation. The probe is constructed using the thick film technique; with printed resistive lines on ceramic substrates. The probe is equipped with an optical multifiber line ending at the front of the probe tip. It is connected to the EOC box on the robot arm and provides an automatic detection of the phantom surface. Half of the fibers are connected to a pulsed infrared transmitter, the other half to a synchronized receiver. As the probe approaches the surface, the reflection from the surface produces a coupling from the transmitting to the receiving fibers. This reflection increases first during the approach, reaches maximum and then decreases. If the probe is flatly touching the surface, the coupling is zero. The distance of the coupling maximum to the surface is independent of the surface reflectivity and largely independent of the surface to probe angle. The DASY5 software reads the reflection turning a software approach and looks for the maximum using 2<sup>nd</sup> ord curve fitting. The approach is stopped at reaching the maximum.

Probe Specifications:

<b>Frequency</b>	10 MHz – >6 GHz Linearity: $\pm 0.2$ dB (30 MHz – 6 GHz)
<b>Directivity</b>	$\pm 0.3$ dB in TSL (rotation around probe axis) $\pm 0.5$ dB in TSL (rotation normal to probe axis)
<b>Dynamic Range</b>	10 $\mu$ W/g – >100 mW/g Linearity: $\pm 0.2$ dB (noise: typically <1 $\mu$ W/g)
<b>Dimensions</b>	Overall length: 337 mm (tip: 20 mm) Tip diameter: 2.5 mm (body: 10 mm) Typical distance from probe tip to dipole centers: 1 mm
<b>Applications</b>	High precision dosimetric measurements in any exposure scenario (e.g., very strong gradient fields); the only probe that enables compliance testing for frequencies up to 6 GHz with precision of better than 30%



Picture 2 E-field Probe

### 10.3 E-FIELD PROBE CALIBRATION

Each E-Probe/Probe Amplifier combination has unique calibration parameters. A TEM cell calibration procedure is conducted to determine the proper amplifier settings to enter in the probe parameters. The amplifier settings are determined for a given frequency by subjecting the probe to a known E-field density (1 mW/cm<sup>2</sup>) using an RF Signal generator, TEM cell, and RF Power Meter.

The free space E-field from amplified probe outputs is determined in a test chamber. This calibration can be performed in a TEM cell if the frequency is below 1 GHz and in a waveguide or other methodologies above 1 GHz for free space. For the free space calibration, the probe is placed in the volumetric center of the cavity and at the proper orientation with the field. The probe is then rotated 360 degrees until the three channels show the maximum reading. The power density readings equate to 1 mW/cm<sup>2</sup>.

E-field temperature correlation calibration is performed in a flat phantom filled with the appropriate simulated brain tissue. The E-field in the medium correlates with the temperature rise in the dielectric medium. For temperature correlation calibration a RF transparent thermistor-based temperature probe is used in conjunction with the E-field probe.

$$SAR = C \frac{\Delta T}{\Delta t}$$

Where:

$\Delta t$  = Exposure time (30 seconds),

C = Heat capacity of tissue (brain or muscle),

$\Delta T$  = Temperature increase due to RF exposure.

$$SAR = \frac{|E|^2 \cdot \sigma}{\rho}$$

Where:

$\sigma$  = Simulated tissue conductivity,

$\rho$  = Tissue density (kg/m<sup>3</sup>).

### 10.4 OTHER TEST EQUIPMENT

#### 10.4.1 Data Acquisition Electronics (DAE)

The data acquisition electronics consist of a highly sensitive electrometer-grade preamplifier with auto-zeroing, a channel and gain-switching multiplexer, a fast 16 bit AD-converter and a command decoder with a control logic unit. Transmission to the measurement server is accomplished through an optical downlink for data and status information, as well as an optical uplink for commands and the clock.

The mechanical probe mounting device includes two different sensor systems for frontal and sideways probe contacts. They are used for mechanical surface detection and probe collision detection.

The input impedance of the DAE is 200 MOhm; the inputs are symmetrical and floating. Common mode rejection is above 80 dB.



Picture 3: DAE

#### 10.4.2 Robot

The SPEAG DASY system uses the high precision robots (DASY5: TX90XL) type from Stäubli SA (France). For the 6-axis controller system, the robot controller version from Stäubli is used. The Stäubli robot series have many features that are important for our application:

- High precision (repeatability 0.02mm)
- High reliability (industrial design)
- Low maintenance costs (virtually maintenance free due to direct drive gears; no belt drives)
- Jerk-free straight movements (brushless synchron motors; no stepper motors)
- Low ELF interference (motor control fields shielded via the closed metallic construction shields)



Picture 4 DASY 5

#### 10.4.3 Measurement Server

The Measurement server is based on a PC/104 CPU board with CPU (DASY5: 400 MHz, Intel Celeron), chip disk (DASY5: 128MB), RAM (DASY5: 128MB). The necessary circuits for communication with the DAE electronic box, as well as the 16 bit AD converter system for optical detection and digital I/O interface are contained on the DASY I/O board, which is directly connected to the PC/104 bus of the CPU board.



Picture 5 Server for DASY 5

The measurement server performs all real-time data evaluation of field measurements and surface detection,

controls robot movements and handles safety operation. The PC operating system cannot interfere with these time critical processes. All connections are supervised by a watchdog, and disconnection of any of the cables to the measurement server will automatically disarm the robot and disable all program-controlled robot movements. Furthermore, the measurement server is equipped with an expansion port which is reserved for future applications. Please note that this expansion port does not have a standardized pinout, and therefore only devices provided by SPEAG can be connected. Devices from any other supplier could seriously damage the measurement server.

#### 10.4.4 Device Holder for Phantom

The SAR in the phantom is approximately inversely proportional to the square of the distance between the source and the liquid surface.. Accurate device positioning is therefore crucial for accurate and repeatable measurements. The positions in which the devices must be measured are defined by the standards.

The DASY device holder is designed to cope with the different positions given in the standard. It has two scales for device rotation (with respect to the body axis) and device inclination (with respect to the line between the ear reference points). The rotation centers for both scales are the ear reference point (ERP). Thus the device needs no repositioning when changing the angles.

The DASY device holder is constructed of low-loss POM material having the following dielectric parameters: relative permittivity  $\epsilon=3$  and loss tangent  $\delta=0.02$ . The amount of dielectric material has been reduced in the closest vicinity of the device, since measurements have suggested that the influence of the clamp on the test results could thus be lowered.

<Laptop Extension Kit>

The extension is lightweight and made of POM, acrylic glass and foam. It fits easily on the upper part of the Mounting Device in place of the phone positioner. The extension is fully compatible with the Twin-SAM and ELI phantoms.



Picture 6: Device Holder

#### 10.4.5 Phantom

The SAM Twin Phantom V4.0 is constructed of a fiberglass shell integrated in a table. The shape of the shell is based on data from an anatomical study designed to Represent the 90<sup>th</sup> percentile of the population. The phantom enables the dissymmetric evaluation of SAR for both left and right handed handset usage, as well as body-worn usage using the flat phantom region. Reference markings on the Phantom allow the complete setup of all predefined phantom positions and measurement grids by manually teaching three points in the robot. The shell phantom has a 2mm shell thickness (except the ear region where shell thickness increases to 6 mm).

Shell Thickness:  $2 \pm 0.2$  mm

Filling Volume: Approx. 25 liters



Dimensions: 810 x 1000 x 500 mm (H x L x W)

Available: Special



**Picture 7: SAM Twin Phantom**

## 10.5 SCANNING PROCEDURE

The DASY5 installation includes predefined files with recommended procedures for measurements and validation. They are read-only document files and destined as fully defined but unmeasured masks. All test positions (head or body-worn) are tested with the same configuration of test steps differing only in the grid definition for the different test positions.

The “reference” and “drift” measurements are located at the beginning and end of the batch process. They measure the field drift at one single point in the liquid over the complete procedure. The indicated drift is mainly the variation of the DUT’s output power and should vary max.  $\pm 5\%$ .

The “surface check” measurement tests the optical surface detection system of the DASY5 system by repeatedly detecting the surface with the optical and mechanical surface detector and comparing the results. The output gives the detecting heights of both systems, the difference between the two systems and the standard deviation of the detection repeatability. Air bubbles or refraction in the liquid due to separation of the sugar-water mixture gives poor repeatability (above  $\pm 0.1\text{mm}$ ). To prevent wrong results tests are only executed when the liquid is free of air bubbles. The difference between the optical surface detection and the actual surface depends on the probe and is specified with each probe. (It does not depend on the surface reflectivity or the probe angle to the surface within  $\pm 30^\circ$ .)

### Area Scan

The Area Scan is used as a fast scan in two dimensions to find the area of high field values before running a detailed measurement around the hot spot. Before starting the area scan a grid spacing is set according to FCC KDB Publication 865664. During scan the distance of the probe to the phantom remains unchanged. After finishing area scan, the field maxima within a range of 2 dB will be ascertained.

### Zoom Scan

After the maximum interpolated values were calculated between the points in the cube, the SAR was averaged over the spatial volume (1g or 10g) using a 3D-Spline interpolation algorithm. The 3D-spline is composed of three one-dimensional splines with the “Not a knot” condition (in x, y, and z directions). The volume was then integrated with the trapezoidal algorithm.

### Spatial Peak Detection

The procedure for spatial peak SAR evaluation has been implemented and can determine values of masses of 1g and 10g, as well as for user-specific masses. The DASY5 system allows evaluations that combine measured data and robot positions, such as:

- maximum search



- extrapolation
- boundary correction
- peak search for averaged SAR

During a maximum search, global and local maxima searches are automatically performed in 2-D after each Area Scan measurement with at least 6 measurement points. It is based on the evaluation of the local SAR gradient calculated by the Quadratic Shepard's method. The algorithm will find the global maximum and all local maxima within -2 dB of the global maxima for all SAR distributions.

Extrapolation routines are used to obtain SAR values between the lowest measurement points and the inner phantom surface. The extrapolation distance is determined by the surface detection distance and the probe sensor offset. Several measurements at different distances are necessary for the extrapolation. Extrapolation routines require at least 10 measurement points in 3-D space.

They are used in the Zoom Scan to obtain SAR values between the lowest measurement points and the inner phantom surface. The routine uses the modified Quadratic Shepard's method for extrapolation.

A Z-axis scan measures the total SAR value at the x-and y-position of the maximum SAR value found during the cube scan. The probe is moved away in z-direction from the bottom of the SAM phantom in 5mm steps.

Table 1: Area and Zoom Scan Resolutions per FCC KDB Publication 865664 D01

Frequency	Maximum Area Scan Resolution (mm) ( $\Delta x_{area}$ , $\Delta y_{area}$ )	Maximum Zoom Scan Resolution (mm) ( $\Delta x_{zoom}$ , $\Delta y_{zoom}$ )	Maximum Zoom Scan Spatial Resolution (mm) $\Delta z_{zoom}(n)$	Minimum Zoom Scan Volume (mm) (x,y,z)
$\leq 2$ GHz	$\leq 15$	$\leq 8$	$\leq 5$	$\geq 30$
2-3 GHz	$\leq 12$	$\leq 5$	$\leq 5$	$\geq 30$
3-4 GHz	$\leq 12$	$\leq 5$	$\leq 4$	$\geq 28$
4-5 GHz	$\leq 10$	$\leq 4$	$\leq 3$	$\geq 25$
5-6 GHz	$\leq 10$	$\leq 4$	$\leq 2$	$\geq 22$

## 10.6 DATA STORAGE AND EVALUATION

### 10.6.1 Data Storage

The DASY5 software stores the acquired data from the data acquisition electronics as raw data (in microvolt readings from the probe sensors), together with all necessary software parameters for the data evaluation (probe calibration data, liquid parameters and device frequency and modulation data) in measurement files with the extension ".DAE4". The software evaluates the desired unit and format for output each time the data is visualized or exported. This allows verification of the complete software setup even after the measurement and allows correction of incorrect parameter settings. For example, if a measurement has been performed with a wrong crest factor parameter in the device set up, the parameter can be corrected afterwards and the data can be re-evaluated.

The measured data can be visualized or exported in different units or formats, depending on the selected probe type ([V/m], [A/m], [ $^{\circ}$ C], [mW/g], [mW/cm<sup>2</sup>], [dBrel], etc.). Some of these units are not available in certain situations or show meaningless results, e.g., a SAR output in a loss less media will always be zero. Raw data can also be exported to perform the evaluation with other software packages.

### 10.6.2 Data Evaluation by SEMCAD

The SEMCAD software automatically executes the following procedures to calculate the field units from the microvolt readings at the probe connector. The parameters used in the evaluation are stored in the configuration modules of the software:

Probe parameters:

- Sensitivity	Norm <sub>i</sub> , a <sub>i0</sub> , a <sub>i1</sub> , a <sub>i2</sub>
- Conversion factor	ConvF <sub>i</sub>
- Diode compression point	Dcp <sub>i</sub>

Device parameters:

- Frequency	f
- Crest factor	cf

Media parameters:

- Conductivity
- Density

These parameters must be set correctly in the software. They can be found in the component documents or they can be imported into the software from the configuration files issued for the DASY5 components. In the direct measuring mode of the multimeter option, the parameters of the actual system setup are used. In the scan visualization and export modes, the parameters stored in the corresponding document files are used.

The first step of the evaluation is a linearization of the filtered input signal to account for the compression characteristics of the detector diode. The compensation depends on the input signal, the diode type and the DC-transmission factor from the diode to the evaluation electronics.

If the exciting field is pulsed, the crest factor of the signal must be known to correctly compensate for peak power. The formula for each channel can be given as:

$$V_i = U_i + U_i^2 \cdot c \cdot f / dcp_i$$

With  $V_i$  = compensated signal of channel i ( i = x, y, z )

$U_i$  = input signal of channel i ( i = x, y, z )

$cf$  = crest factor of exciting field (DASY parameter)

$dcp_i$  = diode compression point (DASY parameter)

From the compensated input signals the primary field data for each channel can be evaluated:

$$\text{E-field probes: } E_i = ( V_i / \text{Norm}_i \cdot \text{ConvF} )^{1/2}$$

$$\text{H-field probes: } H_i = ( V_i )^{1/2} \cdot ( a_{i0} + a_{i1} f + a_{i2} f^2 ) / f$$

With  $V_i$  = compensated signal of channel i ( i = x, y, z )

$\text{Norm}_i$  = sensor sensitivity of channel i ( i = x, y, z )

[mV/(V/m)<sup>2</sup>] for E-field Probes

$\text{ConvF}$  = sensitivity enhancement in solution

$a_{ij}$  = sensor sensitivity factors for H-field probes

$f$  = carrier frequency [GHz]

$E_i$  = electric field strength of channel i in V/m

$H_i$  = magnetic field strength of channel i in A/m

The RSS value of the field components gives the total field strength (Hermitian magnitude):

$$E_{\text{tot}} = ( E_x^2 + E_y^2 + E_z^2 )^{1/2}$$

The primary field data are used to calculate the derived field units.

$$\text{SAR} = ( E_{\text{tot}} )^2 \cdot \sigma / (\rho \cdot 1000)$$

with  $\text{SAR}$  = local specific absorption rate in mW/g

$E_{tot}$  = total field strength in V/m

= conductivity in [mho/m] or [Siemens/m]

= equivalent tissue density in g/cm<sup>3</sup>

Note that the density is normally set to 1 (or 1.06), to account for actual brain density rather than the density of the simulation liquid. The power flow density is calculated assuming the excitation field to be a free space field.

$$P_{pwe} = E_{tot}^2 / 3770 \text{ or } P_{pwe} = H_{tot}^2 \cdot 37.7$$

with  $P_{pwe}$  = equivalent power density of a plane wave in mW/cm<sup>2</sup>

$E_{tot}$  = total electric field strength in V/m ;  $H_{tot}$  = total magnetic field strength in A/m

## 10.7 TISSUE-EQUIVALENT LIQUID

### 10.7.1 Tissue-equivalent Liquid Ingredients

The liquid is consisted of water, salt and Glycol. The liquid has previously been proven to be suited for worst-case. The Table 2 shows the detail solution. It's satisfying the latest tissue dielectric parameters requirements proposed by the KDB 865664 D01.

Table 2: Composition of the Body Tissue Equivalent Matter

MIXTURE%	FREQUENCY (Body) 2450MHz
Water	73.2
Glycol	26.7
Salt	0.1
Dielectric Parameters Target Value	f=2450MHz $\epsilon$ =52.7 $\sigma$ =1.95

### 10.7.2 Tissue-equivalent Liquid Properties

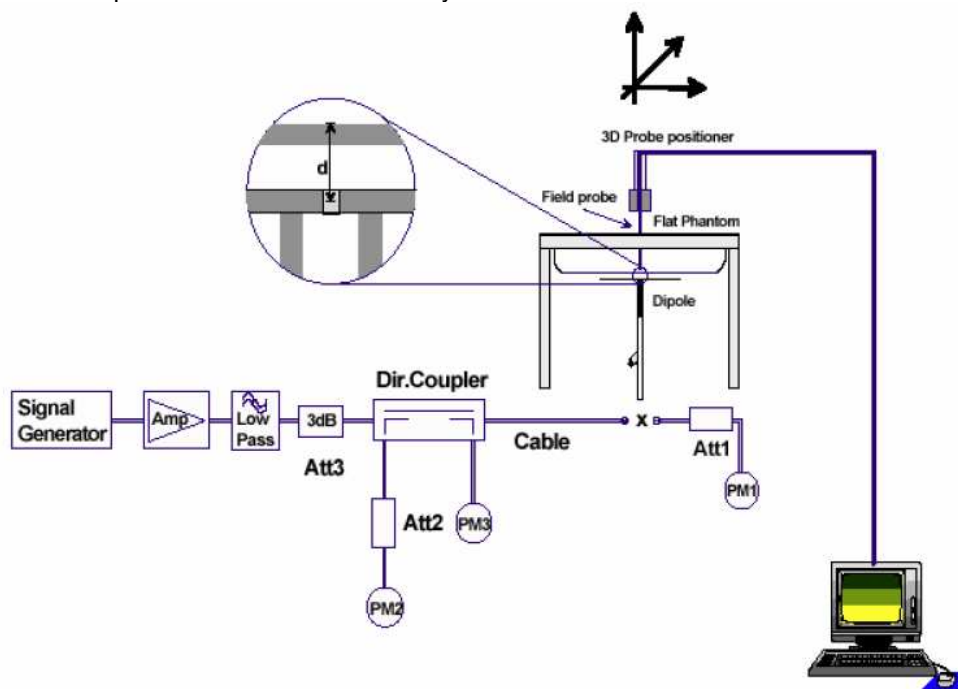
Table 3: Dielectric Performance of Tissue Simulating Liquid

Test Date	Frequency (MHz)	Tissue Type	Liquid Temp. (°C)	Conductivity ( $\sigma$ )	Permittivity ( $\epsilon$ )	Conductivity Target ( $\sigma$ )	Permittivity Target ( $\epsilon$ )	Delta ( $\sigma$ ) (%)	Delta ( $\epsilon$ ) (%)	Limit (%)
2016-6-01	2450	Body	21.6	1.98	51.14	1.95	52.7	1.54	-2.96	±5

## 10.8 SYSTEM CHECK

### 10.8.1 Description of System Check

The manufacturer calibrates the probes annually. Dielectric parameters of the tissue simulants were measured every day using the dielectric probe kit and the network analyzer. A system check measurement was made following the determination of the dielectric parameters of the simulant, using the dipole validation kit. A power level of 250 mW was supplied to the dipole antenna, which was placed under the flat section of the twin SAM phantom. The system check results (dielectric parameters and SAR values) are given in the table 4. System check results have to be equal or near the values determined during dipole calibration with the relevant liquids and test system ( $\pm 10\%$ ). System check is performed regularly on all frequency bands where tests are performed with the DASY5 system.



Picture 9. System Check Set-up

#### Justification for Extended SAR Dipole Calibrations

Usage of SAR dipoles calibrated less than 3 years ago but more than 1 year ago were confirmed in maintaining return loss ( $< -20$  dB, within 20% of prior calibration) and impedance (within 5 ohm from prior calibration) requirements per extended calibrations in KDB 865664 D01:

Table 4: Antenna Parameters with Body Tissue Simulating Liquid

Table 4

Dipole D2450V2 SN: 966				
Body Liquid				
Date of Measurement	Return Loss(dB)	$\Delta\%$	Impedance ( $\Omega$ )	$\Delta\Omega$
2015-06-10	-28.2	-	50.1+3.9j	-

### 10.8.2 System Check Results

Table 5: System Check for Body Tissue Simulating Liquid

Frequency	Test Date	Dielectric Parameters		250mW Measured SAR <sub>1g</sub>	1W Normalized SAR <sub>1g</sub>	1W Target SAR <sub>1g</sub>	Limit(±10% Deviation)
		ε <sub>r</sub>	σ (s/m)	(W/kg)			
2450MHz	2016-06-01	51.14	1.98	12.7	50.8	52.10	-2.50
Note: 1. The graph results see ANNEX B. 2.Target Values used derive from the calibration certificate.							

## 11 MEASUREMENT PROCEDURES

### 11.1 GENERAL DESCRIPTION OF TEST PROCEDURES

For WLAN SAR testing, WLAN engineering testing software installed on the DUT can provide continuous transmitting RF signal. This RF signal utilized in SAR measurement has almost 100% duty cycle and its crest factor is 1.

For the 802.11b/g/n SAR tests, a communication link is set up with the test mode software for WIFI mode test. During the test, at the each test frequency channel, the EUT is operated at the RF continuous emission mode. Provided higher maximum output power is not specified for the other channels, channels 1, 6 and 11 are used to configure 22 MHz DSSS and 20 MHz OFDM channels for SAR measurements; otherwise, the closest adjacent channel with the highest maximum output power specified for production units should be tested instead of channels 1, 6 or 11. When 40 MHz channels are supported, and provided higher maximum output power is not specified for other applicable 40 MHz channels, channel 6 is used to measure SAR; otherwise, the channel with highest specified maximum output power should be tested instead. In addition, SAR test reduction with respect to reported SAR and transmission band width according to 4.3.3 of KDB Publication 447498 D01 may also be applied

802.11b/g/n operating modes are tested independently according to the service requirements in each frequency band. 802.11b/g/n modes are tested on the maximum average output channel.

SAR is measured for 2.4 GHz 802.11b DSSS using either a fixed test position or, when applicable, the initial test position procedure. SAR test reduction is determined according to the following:

- a) When the reported SAR of the highest measured maximum output power channel (see 3.1) for the exposure configuration is  $\leq 0.8$  W/kg, no further SAR testing is required for 802.11b DSSS in that exposure configuration.
- b) When the reported SAR is  $> 0.8$  W/kg, SAR is required for that exposure configuration using the next highest measured output power channel. When any reported SAR is  $> 1.2$  W/kg, SAR is required for the third channel; i.e., all channels require testing.

When SAR measurement is required for 2.4 GHz 802.11g/n OFDM configurations, the measurement and test reduction procedures for OFDM are applied (see 5.3, including subclauses). SAR is not required for the following 2.4 GHz OFDM conditions.

- a) When KDB Publication 447498 D01 SAR test exclusion applies to the OFDM configuration.
- b) When the highest reported SAR for DSSS is adjusted by the ratio of OFDM to DSSS specified maximum output power and the adjusted SAR is  $\leq 1.2$  W/kg.

### 11.2 MEASUREMENT VARIABILITY

Per FCC KDB Publication 865664 D01, SAR measurement variability was assessed for each frequency band, which was determined by the SAR probe calibration point and tissue-equivalent medium used for the device measurements. When both head and body tissue-equivalent media were required for SAR measurements in a frequency band, the variability measurement procedures were applied to the tissue medium with the highest measured SAR, using the highest measured SAR configuration for that tissue-equivalent medium. These additional measurements were repeated after the completion of all measurements requiring the same head or body tissue-equivalent medium in a frequency band. The test device was returned to ambient conditions (normal room temperature) with the battery fully charged before it was re-mounted on the device holder for the repeated measurement(s) to minimize any unexpected variations in the repeated results.

SAR Measurement Variability was assessed using the following procedures for each frequency band:

- 1) Repeated measurement is not required when the original highest measured SAR is  $< 0.80$  W/kg; steps 2) through 4) do not apply.

- 2) When the original highest measured SAR is  $\geq 0.80$  W/kg, repeat that measurement once.
- 3) Perform a second repeated measurement only if the ratio of largest to smallest SAR for the original and first repeated measurements is  $> 1.20$  or when the original or repeated measurement is  $\geq 1.45$  W/kg (~ 10% from the 1-g SAR limit).
- 4) Perform a third repeated measurement only if the original, first or second repeated measurement is  $\geq 1.5$  W/kg and the ratio of largest to smallest SAR for the original, first and second repeated measurements is  $> 1.20$ .

### 11.3 TEST RESULTS

#### 11.3.1 Conducted Power Results

Mode	Channel / Frequency (MHz)	Data rate (Mbps)	AV Power (dBm)
11b	1 / 2412	1	12.13
		2	12.11
		5.5	12.06
		11	12.05
	6 / 2437	1	12.27
		2	12.25
		5.5	12.22
		11	12.18
	11 / 2462	1	12.49
		2	12.48
		5.5	12.40
		11	12.34
11g	1 / 2412	6	11.00
		9	10.98
		12	10.82
		18	10.65
		24	10.53
		36	10.29
		48	10.18
		54	10.04
	6 / 2437	6	11.25
		9	11.17
		12	11.01
		18	10.95
		24	10.72
		36	10.54
		48	10.41
		54	10.28
	11 / 2462	6	11.37
		9	11.27
		12	11.10
		18	10.99
		24	10.76
		36	10.64
		48	10.35
		54	10.30



Mode	Channel / Frequency (MHz)	Data rate (Mbps)	AV Power (dBm)
11n-HT20	1 / 2412	MCS0	10.21
		MCS1	10.02
		MCS2	9.91
		MCS3	9.88
		MCS4	9.64
		MCS5	9.58
		MCS6	9.37
		MCS7	9.21
	6 / 2437	MCS0	10.73
		MCS1	10.62
		MCS2	10.50
		MCS3	10.29
		MCS4	10.08
		MCS5	9.93
		MCS6	9.61
		MCS7	9.52
	11 / 2462	MCS0	10.57
		MCS1	10.41
		MCS2	10.27
		MCS3	10.08
		MCS4	9.87
		MCS5	9.67
		MCS6	9.54
		MCS7	9.30
11n-HT40	3 / 2422	MCS0	9.78
		MCS1	9.67
		MCS2	9.58
		MCS3	9.35
		MCS4	9.30
		MCS5	9.21
		MCS6	9.15
		MCS7	9.01
	6 / 2437	MCS0	10.18
		MCS1	10.02
		MCS2	9.89
		MCS3	9.72
		MCS4	9.62
		MCS5	9.51
		MCS6	9.34
		MCS7	9.21
	9 / 2452	MCS0	10.11
		MCS1	10.01
		MCS2	9.87
		MCS3	9.67
		MCS4	9.54
		MCS5	9.41
		MCS6	9.22
		MCS7	9.12

### 11.3.2 SAR TEST RESULTS

#### 2.4GHz WiFi-802.11b DSSS SAR Value

Test Position	Channel/ Frequency (MHz)	Mode	Max. Allowed Power (dBm)	Conducte d Power (dBm)	Drift ±0.21dB	Limit SAR <sub>1g</sub> : 1.6W/kg			
					Drift(dB)	Measured SAR <sub>1g</sub> (W/kg)	Scaling Factor	Report SAR <sub>1g</sub> (W/kg)	Figure No.
Test Position of Body (Distance Between EUT and Flat Phantom: 0mm)									
Front Side	11/2462	DSSS	N/A	N/A	N/A	N/A	N/A	N/A	-
Back Side	11/2462	DSSS	13	12.49	-0.04	1.24	1.12	1.39	Fig. 2
Back Side	6/2437	DSSS	13	12.27	-0.03	0.953	1.18	1.15	-
Back Side	1/2412	DSSS	13	12.13	0.05	0.976	1.22	1.19	-
Right Side	11/2462	DSSS	13	12.49	-0.02	0.214	1.12	0.240	-
Left Side	11/2462	DSSS	N/A	N/A	N/A	N/A	N/A	N/A	-
Top Side	11/2462	DSSS	N/A	N/A	N/A	N/A	N/A	N/A	-
Bottom Side	11/2462	DSSS	13	12.49	0.09	0.641	1.12	0.718	-
Worst Case Position of SAR(1 <sup>st</sup> Repeated SAR,Distance 0mm)									
Back Side	11/2462	DSSS	13	12.49	-0.05	1.15	1.12	1.29	-
Note: 1. The value with blue color is the maximum SAR Value of each test band. 2. When the reported SAR of the highest measured maximum output power channel for the exposure configuration is ≤ 0.8 W/kg, no further SAR testing is required for 802.11b DSSS in that exposure configuration. 3. When the reported SAR is > 0.8 W/kg, SAR is required for that exposure configuration using the next highest measured output power channel. When any reported SAR is > 1.2 W/kg, SAR is required for the third channel; i.e., all channels require testing.									

#### SAR Measurement Variability Results

Test Position	Channel/ Frequency (MHz)	Measured SAR (1g)	1st Repeated SAR (1g)	Ratio	2nd Repeated SAR (1g)	3rd Repeated SAR (1g)
Back Side	11/2462	1.24	1.15	1.08	N/A	N/A
Note: 1) When the original highest measured SAR is ≥ 0.80 W/kg, the measurement was repeated once. 2) A second repeated measurement was preformed only if the ratio of largest to smallest SAR for the original and first repeated measurements was > 1.20 or when the original or repeated measurement was ≥ 1.45 W/kg (~ 10% from the 1-g SAR limit). 3) A third repeated measurement was performed only if the original, first or second repeated measurement was ≥ 1.5 W/kg and the ratio of largest to smallest SAR for the original, first and second repeated measurements is > 1.20. 4) Repeated measurements are not required when the original highest measured SAR is < 0.80 W/kg						

#### 2.4 GHz 802.11g/n OFDM SAR Test Exclusion Requirements

Test Position	Channel/ Frequency (MHz)	802.11b Max. Allowed Power (dBm)	802.11g/n Max. Allowed Power (dBm)	Limit SAR <sub>1g</sub> : 1.6W/kg		
				802.11b Reort SAR <sub>1g</sub> (W/kg)	Scaling Factor	Adjusted SAR <sub>1g</sub> (W/kg)
Back Side	11/2462	13	11.5	1.39	1.41	0.984

Note: SAR is not required for the 2.4 GHz OFDM conditions if When the highest reported SAR for DSSS is adjusted by the ratio of OFDM to DSSS specified maximum output power and the adjusted SAR is  $\leq 1.2$  W/kg.

#### 11.3.3 MAXIMUM GRAPH RESULTS

The graph results see ANNEX C.

## 12 MEASUREMENT UNCERTAINTY

### 12.1 MEASUREMENT UNCERTAINTY EVALUATION TEMPLATE FOR DUT SAR TEST

No.	Description	Tol. (±%)	Prob. Dist.	Div.	(ci) 1g	(ci) 10g	1g $u_i$ (±%)	10g $u_i$ (±%)	$v_i$
<b>Measurement system</b>									
1	Probe calibration	6.3	N	1	1	1	6.3	6.3	∞
2	Axial Isotropy	0.5	R	$\sqrt{3}$	0.7	0.7	0.2	0.2	∞
3	Hemispherical Isotropy	2.6	R	$\sqrt{3}$	0.7	0.7	1.1	1.1	∞
4	Boundary effect	1.0	R	$\sqrt{3}$	1	1	0.6	0.6	∞
5	Linearity	0.6	R	$\sqrt{3}$	1	1	0.3	0.3	∞
6	System detection limits	1.0	R	$\sqrt{3}$	1	1	0.6	0.6	∞
7	Modulation response	2.4	R	$\sqrt{3}$	1	1	1.4	1.4	∞
8	Readout electronics	0.3	N	1	1	1	0.3	0.3	∞
9	Response time	0.8	R	$\sqrt{3}$	1	1	0.5	0.5	∞
10	Integration time	2.6	R	$\sqrt{3}$	1	1	1.5	1.5	∞
11	RF ambient conditions-noise	3.0	R	$\sqrt{3}$	1	1	1.7	1.7	∞
12	RF ambient conditions-reflection	3.0	R	$\sqrt{3}$	1	1	1.7	1.7	∞
13	Probe positioned mechanical tolerance	0.4	R	$\sqrt{3}$	1	1	0.2	0.2	∞
14	Probe positioning with respect to phantom shell	2.9	R	$\sqrt{3}$	1	1	1.7	1.7	∞
15	Extrapolation, Interpolation and integrations algorithms for max. SAR evaluation	2.0	R	$\sqrt{3}$	1	1	1.2	1.2	∞
<b>Test sample related</b>									
16	Test sample positioning	2.9	N	1	1	1	2.9	2.9	11
17	Device holder uncertainty	3.6	N	1	1	1	3.6	3.6	7
18	Output power variation-SAR drift measurement	5.0	R	$\sqrt{3}$	1	1	2.9	2.9	∞
19	SAR scaling	0.0	R	$\sqrt{3}$			0.0	0.0	∞
<b>Phantom and tissue parameters</b>									
20	Phantom shell uncertainty-shape, thickness and permittivity	6.1	R	$\sqrt{3}$	1	1	3.5	3.5	∞
21	Uncertainty in SAR correction for deviations in permittivity and conductivity	1.9	N	1	1	0.84	1.9	1.6	∞
22	Liquid conductivity measurement	2.5	N	1	0.78	0.71	2.0	1.8	5
23	Liquid permittivity measurement	2.5	N	1	0.23	0.26	0.6	0.7	5
24	Liquid conductivity-Temperature uncertainty	3.4	R	$\sqrt{3}$	0.78	0.71	1.5	1.4	∞

25	Liquid permittivity - Temperature uncertainty	0.4	R	$\sqrt{3}$	0.23	0.26	0.1	0.1	$\infty$
Combined standard uncertainty		$u_c = \sqrt{\sum_{i=1}^{21} c_i^2 u_i^2}$					10.3	10.1	135
Expanded uncertainty (confidence interval of 95 %)		$u_e = 2u_c$					20.6	20.2	\

## 12.2 MEASUREMENT UNCERTAINTY EVALUATION TEMPLATE FOR SYSTEM CHECK

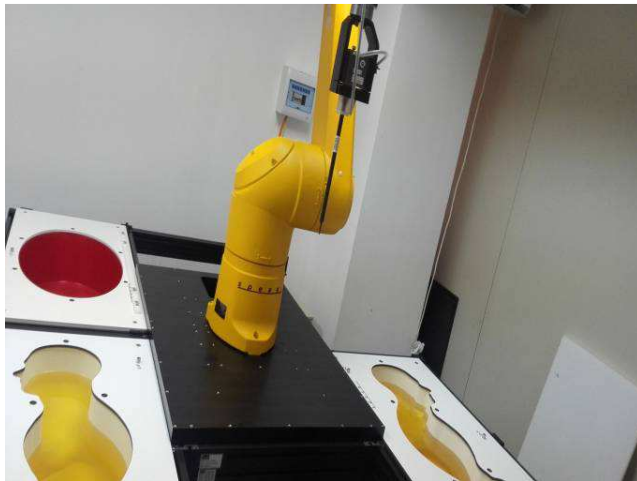
No.	Description	Tol. (±%)	Prob. Dist.	Div.	(ci) 1g	(ci) 10g	1g $u_i$ (±%)	10g $u_i$ (±%)	$v_i$
<b>Measurement system</b>									
1	Probe calibration	6.3	N	1	1	1	6.3	6.3	$\infty$
2	Axial Isotropy	0.5	R	$\sqrt{3}$	0.7	0.7	0.2	0.2	$\infty$
3	Hemispherical Isotropy	2.6	R	$\sqrt{3}$	0.7	0.7	1.1	1.1	$\infty$
4	Boundary effect	1.0	R	$\sqrt{3}$	1	1	0.6	0.6	$\infty$
5	Linearity	0.6	R	$\sqrt{3}$	1	1	0.3	0.3	$\infty$
6	System detection limits	1.0	R	$\sqrt{3}$	1	1	0.6	0.6	$\infty$
7	Modulation response	2.4	R	$\sqrt{3}$	1	1	1.4	1.4	$\infty$
8	Readout electronics	0.3	N	1	1	1	0.3	0.3	$\infty$
9	Response time	0.8	R	$\sqrt{3}$	1	1	0.5	0.5	$\infty$
10	Integration time	2.6	R	$\sqrt{3}$	1	1	1.5	1.5	$\infty$
11	RF ambient conditions-noise	3.0	R	$\sqrt{3}$	1	1	1.7	1.7	$\infty$
12	RF ambient conditions-reflection	3.0	R	$\sqrt{3}$	1	1	1.7	1.7	$\infty$
13	Probe positioned mechanical tolerance	0.4	R	$\sqrt{3}$	1	1	0.2	0.2	$\infty$
14	Probe positioning with respect to phantom shell	2.9	R	$\sqrt{3}$	1	1	1.7	1.7	$\infty$
15	Extrapolation, Interpolation and integrations algorithms for max. SAR evaluation	2.0	R	$\sqrt{3}$	1	1	1.2	1.2	$\infty$
<b>Field Source</b>									
16	Deviation of the experimental source from numerical source	5.5	N	1	1	1	5.5	5.5	$\infty$
17	Source to liquid distance	2.0	R	$\sqrt{3}$	1	1	1.2	1.2	$\infty$
18	Drift of output power (measured SAR drift)	3.4	R	$\sqrt{3}$	1	1	2.0	2.0	$\infty$
<b>Phantom and tissue parameters</b>									
19	Phantom shell uncertainty-shape, thickness and permittivity	6.1	R	$\sqrt{3}$	1	1	3.5	3.5	$\infty$
20	Uncertainty in SAR correction for deviations in permittivity and	1.9	N	1	1	0.84	1.9	1.6	$\infty$

	conductivity								
21	Liquid conductivity measurement	2.5	N	1	0.78	0.71	2.0	1.8	5
22	Liquid permittivity measurement	2.5	N	1	0.23	0.26	0.6	0.7	5
23	Liquid conductivity-Temperature uncertainty	3.4	R	$\sqrt{3}$	0.78	0.71	1.5	1.4	$\infty$
24	Liquid permittivity - Temperature uncertainty	0.4	R	$\sqrt{3}$	0.23	0.26	0.1	0.1	$\infty$
Combined standard uncertainty		$u_c' = \sqrt{\sum_{i=1}^{21} c_i^2 u_i^2}$					10.3	10.1	135
Expanded uncertainty (confidence interval of 95 %)		$u_e = 2u_c$					20.6	20.2	\

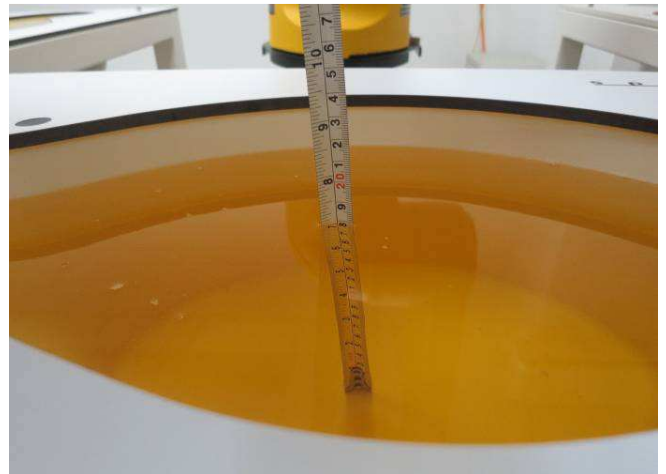
### 13 MAIN TEST INSTRUMENT

	Equipment No.	Equipment	Manufacturer	Model No.	Serial No.	Last Cal.	Cal. Interval
<input checked="" type="checkbox"/>	SZ060-01	SAR Test System	SPEAG	DASY52 SAR TX90XL	F14/5YJ0B1/A/01	6/10/2015	1 year
<input checked="" type="checkbox"/>	SZ060-01-01	E-Field Probe	SPEAG	EX3DV4	7322	6/10/2015	1 year
<input checked="" type="checkbox"/>	SZ060-01-10	System Validation Dipole	SPEAG	D2450V2	966	6/10/2015	2 year
<input checked="" type="checkbox"/>	SZ060-01-13	Data Acquisition Unit	SPEAG	DAE4	1473	6/2/2015	1 year
<input checked="" type="checkbox"/>	SZ060-01-14	Dielectric Assessment Kit	SPEAG	DAKS 3.5	1056	6/2/2015	1 year
<input checked="" type="checkbox"/>	SZ060-01-15	Vector Reflectometer	Copper Mountain Technologies	Planar R140	0090614	N/A	N/A
<input checked="" type="checkbox"/>	SZ060-01-16	Thermometer	LKM electronics GmbH	DTM3000	3477	8/10/2015	1 year
<input checked="" type="checkbox"/>	SZ060-01-17	Power Amplifier	Mini Circuits	ZHL-42W+	QA1449003	7/28/2015	1 year
<input checked="" type="checkbox"/>	SZ060-01-18	Power Amplifier	Mini Circuits	ZVE-8G+	111701437	7/28/2015	1 year
<input checked="" type="checkbox"/>	SZ060-01-19	SAM Twin Phantom	SPEAG	SAM Twin Phantom V5.0	1888	N/A	N/A
<input checked="" type="checkbox"/>	SZ180-13	MXG Vector Signal Generator	Keysight	N5182B	MY53051328	11/3/2015	1 year
<input checked="" type="checkbox"/>	SZ070-04	Directional Bridge	Agilent	86205A	MY31402141	12/30/2015	1 year
<input checked="" type="checkbox"/>	SZ182-02	RF Power Meter	Anritsu	ML2496A	1302005	5/20/2016	1 year
<input checked="" type="checkbox"/>	SZ182-03	Average power sensor	R&S	NRP-Z22	101689	7/16/2015	1 year
<input checked="" type="checkbox"/>	SZ070-01	Attenuator	Huber Suhner	10dB	N/A	6/27/2015	1 year
<input checked="" type="checkbox"/>	SZ070-02	Attenuator	Huber Suhner	30dB	N/A	6/27/2015	1 year
<input checked="" type="checkbox"/>	N/A	Device Holder	SPEAG	N/A	N/A	N/A	N/A
<input checked="" type="checkbox"/>	SZ060-01-22	SAR Test System Software	SPEAG	DASY5.2 SW: 52.8.8.1222	N/A	7/28/2015	10/28/2016

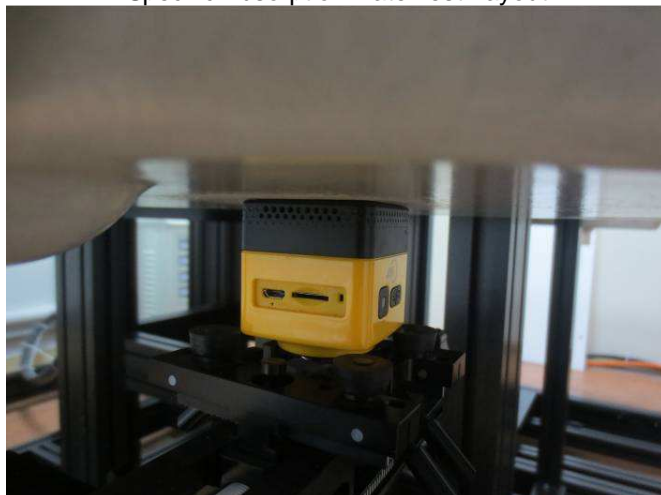
## ANNEX A: Test Layout



Specific Absorption Rate Test Layout



Liquid Depth in the flat phantom (2450MHz, 18.1cm)



Bottom Side (distance 0mm with Flat Phantom)



Back Side (distance 0mm with Flat Phantom)



Left Side (distance 0mm with Flat Phantom)



Right Side (distance 0mm with Flat Phantom)



**ANNEX B System Check Results****System Performance Check at 2450MHz**

Date/Time: 6/1/2016 3:17:24 PM

Test Laboratory: Intertek Service

Communication System: UID 0, CW (0); Frequency: 2450 MHz; Communication System PAR: 0 dB; PMF: 1

Medium parameters used:  $f = 2450$  MHz;  $\sigma = 1.98$  S/m;  $\epsilon_r = 51.14$ ;  $\rho = 1000$  kg/m<sup>3</sup>  
Phantom section: Flat Section

DASY Configuration:

- Probe: EX3DV4 - SN7322; ConvF(7.08, 7.08, 7.08); Calibrated: 6/10/2015;
- Sensor-Surface: 3mm (Mechanical Surface Detection)
- Electronics: DAE4 Sn1473; Calibrated: 6/2/2015
- Phantom: SAM 2; Type: QD000P40CD; Serial: TP:1888
- DASY52 52.8.8(1222); SEMCAD X 14.6.10(7331)

**Configuration/d=10mm, Pin=250 mW, dist=3.0mm (EX-Probe)/Area Scan (6x9x1):**

Measurement grid: dx=12mm, dy=12mm

Maximum value of SAR (measured) = 13.9 W/kg

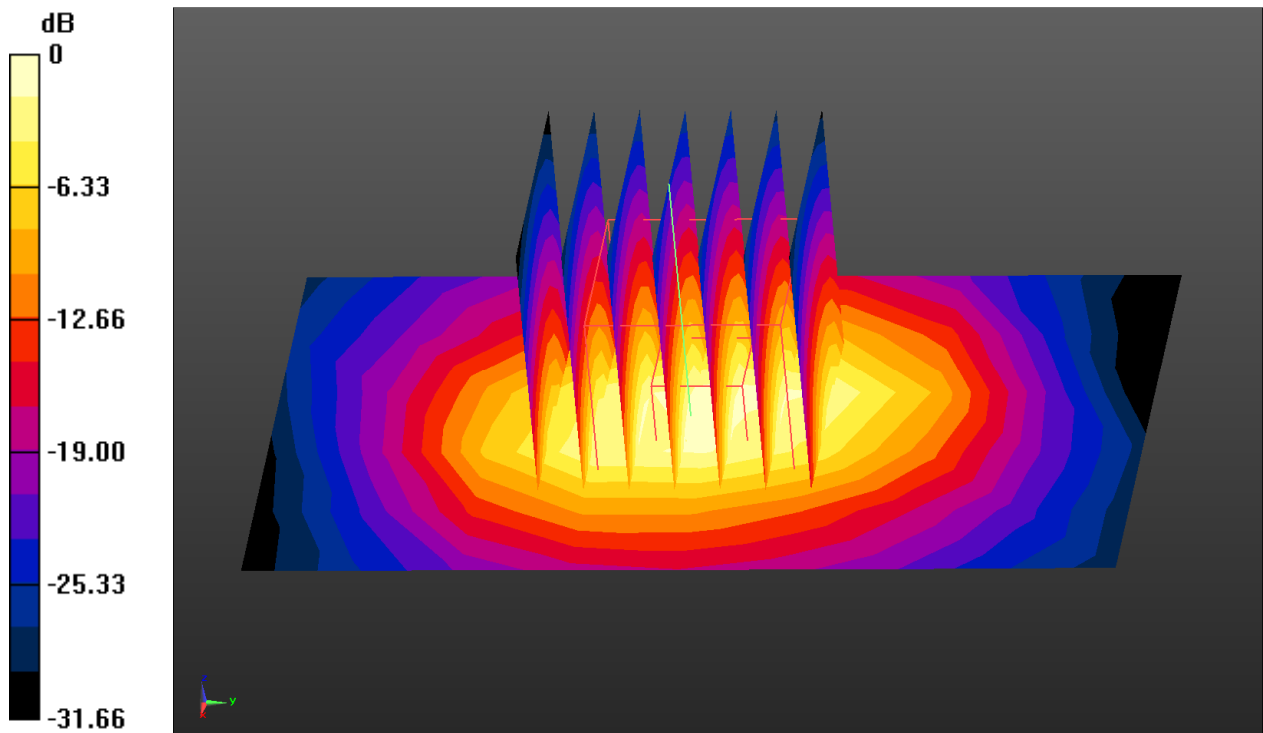
**Configuration/d=10mm, Pin=250 mW, dist=3.0mm (EX-Probe)/Zoom Scan****(7x7x7)/Cube 0:** Measurement grid: dx=5mm, dy=5mm, dz=5mm

Reference Value = 91.92 V/m; Power Drift = 0.01 dB

Peak SAR (extrapolated) = 25.9 W/kg

**SAR(1 g) = 12.7 W/kg; SAR(10 g) = 5.94 W/kg**

Maximum value of SAR (measured) = 16.7 W/kg



0 dB = 16.7 W/kg = 12.23 dBW/kg

**ANNEX C: MAXIMUM GRAPH RESULTS****802.11 b back side high channel**

Date/Time: 6/1/2016 4:49:03 PM

Test Laboratory: Intertek Service

Communication System: UID 0, WiFi 802.11 b (0); Frequency: 2462 MHz; Communication System PAR: 0 dB; PMF: 1

Medium parameters used (interpolated):  $f = 2462$  MHz;  $\sigma = 1.99$  S/m;  $\epsilon_r = 50.983$ ;  $\rho = 1000$  kg/m<sup>3</sup>

Phantom section: Flat Section

DASY Configuration:

- Probe: EX3DV4 - SN7322; ConvF(7.08, 7.08, 7.08); Calibrated: 6/10/2015;
- Sensor-Surface: 3mm (Mechanical Surface Detection)
- Electronics: DAE4 Sn1473; Calibrated: 6/2/2015
- Phantom: SAM 2; Type: QD000P40CD; Serial: TP:1888
- DASY52 52.8.8(1222); SEMCAD X 14.6.10(7331)

**Configuration/Wifi b high/Area Scan (6x9x1):** Measurement grid: dx=12mm, dy=12mm

[Info: Interpolated medium parameters used for SAR evaluation.](#)

Maximum value of SAR (measured) = 1.68 W/kg

**Configuration/FCC Wifi b high/Zoom Scan (7x7x7)/Cube 0:** Measurement grid: dx=5mm, dy=5mm, dz=5mm

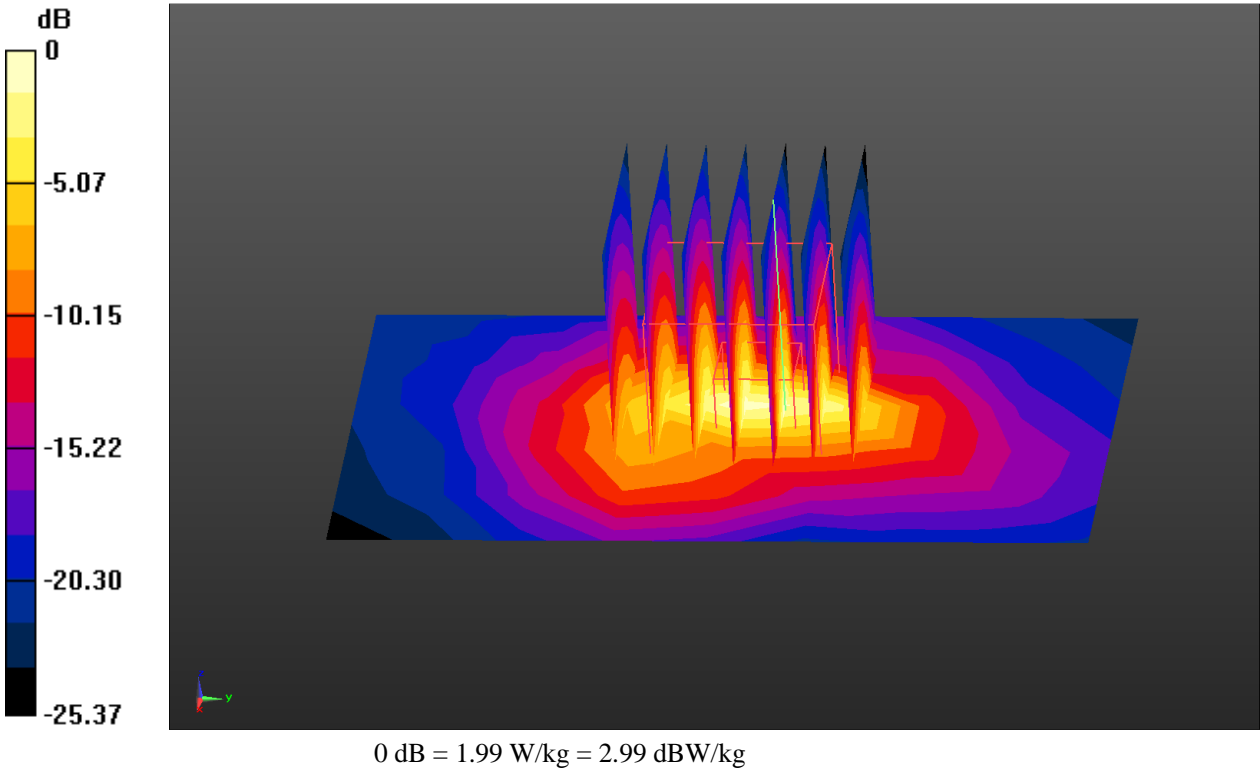
Reference Value = 26.81 V/m; Power Drift = -0.04 dB

Peak SAR (extrapolated) = 3.58 W/kg

**SAR(1 g) = 1.24 W/kg; SAR(10 g) = 0.431 W/kg**

[Info: Interpolated medium parameters used for SAR evaluation.](#)

Maximum value of SAR (measured) = 1.99 W/kg



## ANNEX D: SYSTEM VALIDATION

The SAR system must be validated against its performance specifications before it is deployed. When SAR probes, system components or software are changed, upgraded or recalibrated, these must be validated with the SAR system(s) that operates with such components.

**Table D.1: System Validation Part 1**

System No.	Probe SN.	Liquid name	Validation date	Frequency point	Permittivity $\epsilon$	Conductivity $\sigma$ (S/m)
1	7322	2450MHz (Body)	6/10/2015	2450MHz	52.7	1.95

**Table D.2: System Validation Part 2**

<b>CW Validation</b>	<b>Sensitivity</b>	<b>PASS</b>	<b>PASS</b>
	<b>Probe linearity</b>	PASS	PASS
	<b>Probe Isotropy</b>	PASS	PASS
<b>Mod Validation</b>	<b>MOD.type</b>	QPSK	QPSK
	<b>Duty factor</b>	PASS	PASS
	<b>PAR</b>	PASS	PASS

## ANNEX E PROBE, DAE and DIPOLE CALIBRATION CERTIFICATE

Schmid &amp; Partner Engineering AG

s p e a g

Zeughausstrasse 43, 8004 Zurich, Switzerland  
Phone +41 44 245 9700, Fax +41 44 245 9779  
info@speag.com, <http://www.speag.com>

1473

**IMPORTANT NOTICE****USAGE OF THE DAE 4**

The DAE unit is a delicate, high precision instrument and requires careful treatment by the user. There are no serviceable parts inside the DAE. Special attention shall be given to the following points:

**Battery Exchange:** The battery cover of the DAE4 unit is closed using a screw, over tightening the screw may cause the threads inside the DAE to wear out.

**Shipping of the DAE:** Before shipping the DAE to SPEAG for calibration, remove the batteries and pack the DAE in an antistatic bag. This antistatic bag shall then be packed into a larger box or container which protects the DAE from impacts during transportation. The package shall be marked to indicate that a fragile instrument is inside.

**E-Stop Failures:** Touch detection may be malfunctioning due to broken magnets in the E-stop. Rough handling of the E-stop may lead to damage of these magnets. Touch and collision errors are often caused by dust and dirt accumulated in the E-stop. To prevent E-stop failure, the customer shall always mount the probe to the DAE carefully and keep the DAE unit in a non-dusty environment if not used for measurements.

**Repair:** Minor repairs are performed at no extra cost during the annual calibration. However, SPEAG reserves the right to charge for any repair especially if rough unprofessional handling caused the defect.

**DASY Configuration Files:** Since the exact values of the DAE input resistances, as measured during the calibration procedure of a DAE unit, are not used by the DASY software, a nominal value of 200 MOhm is given in the corresponding configuration file.

**Important Note:**

**Warranty and calibration is void if the DAE unit is disassembled partly or fully by the Customer.**

**Important Note:**

**Never attempt to grease or oil the E-stop assembly. Cleaning and readjusting of the E-stop assembly is allowed by certified SPEAG personnel only and is part of the annual calibration procedure.**

**Important Note:**

**To prevent damage of the DAE probe connector pins, use great care when installing the probe to the DAE. Carefully connect the probe with the connector notch oriented in the mating position. Avoid any rotational movement of the probe body versus the DAE while turning the locking nut of the connector. The same care shall be used when disconnecting the probe from the DAE.**

Schmid &amp; Partner Engineering

TN\_BR040315AD DAE4.doc

11.12.2009

**Calibration Laboratory of**  
**Schmid & Partner**  
**Engineering AG**  
 Zeughausstrasse 43, 8004 Zurich, Switzerland



**S** Schweizerischer Kalibrierdienst  
**C** Service suisse d'étalonnage  
**S** Servizio svizzero di taratura  
**S** Swiss Calibration Service

Accredited by the Swiss Accreditation Service (SAS)

Accreditation No.: **SCS 0108**

The Swiss Accreditation Service is one of the signatories to the EA  
 Multilateral Agreement for the recognition of calibration certificates

Client **Intertek HK (Auden)**

Certificate No: **DAE4-1473\_Jun15**

## CALIBRATION CERTIFICATE

Object **DAE4 - SD 000 D04 BM - SN: 1473**

Calibration procedure(s) **QA CAL-06.v29**  
**Calibration procedure for the data acquisition electronics (DAE)**

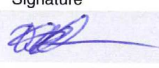

Calibration date: **June 02, 2015**

This calibration certificate documents the traceability to national standards, which realize the physical units of measurements (SI).  
 The measurements and the uncertainties with confidence probability are given on the following pages and are part of the certificate.

All calibrations have been conducted in the closed laboratory facility: environment temperature  $(22 \pm 3)^{\circ}\text{C}$  and humidity  $< 70\%$ .

Calibration Equipment used (M&TE critical for calibration)

Primary Standards	ID #	Cal Date (Certificate No.)	Scheduled Calibration
Keithley Multimeter Type 2001	SN: 0810278	03-Oct-14 (No:15573)	Oct-15
Secondary Standards	ID #	Check Date (in house)	Scheduled Check
Auto DAE Calibration Unit	SE UWS 053 AA 1001	06-Jan-15 (in house check)	In house check: Jan-16
Calibrator Box V2.1	SE UMS 006 AA 1002	06-Jan-15 (in house check)	In house check: Jan-16

	Name	Function	Signature
Calibrated by:	Dominique Steffen	Technician	
Approved by:	Fin Bomholt	Deputy Technical Manager	

Issued: June 2, 2015

This calibration certificate shall not be reproduced except in full without written approval of the laboratory.



**Calibration Laboratory of**  
Schmid & Partner  
Engineering AG  
Zeughausstrasse 43, 8004 Zurich, Switzerland



**S** Schweizerischer Kalibrierdienst  
**C** Service suisse d'étalonnage  
**S** Servizio svizzero di taratura  
**S** Swiss Calibration Service

Accredited by the Swiss Accreditation Service (SAS)  
The Swiss Accreditation Service is one of the signatories to the EA  
Multilateral Agreement for the recognition of calibration certificates

Accreditation No.: **SCS 0108**

## Glossary

**DAE** data acquisition electronics  
**Connector angle** information used in DASY system to align probe sensor X to the robot coordinate system.

## Methods Applied and Interpretation of Parameters

- **DC Voltage Measurement:** Calibration Factor assessed for use in DASY system by comparison with a calibrated instrument traceable to national standards. The figure given corresponds to the full scale range of the voltmeter in the respective range.
- **Connector angle:** The angle of the connector is assessed measuring the angle mechanically by a tool inserted. Uncertainty is not required.
- The following parameters as documented in the Appendix contain technical information as a result from the performance test and require no uncertainty.
  - **DC Voltage Measurement Linearity:** Verification of the Linearity at +10% and -10% of the nominal calibration voltage. Influence of offset voltage is included in this measurement.
  - **Common mode sensitivity:** Influence of a positive or negative common mode voltage on the differential measurement.
  - **Channel separation:** Influence of a voltage on the neighbor channels not subject to an input voltage.
  - **AD Converter Values with inputs shorted:** Values on the internal AD converter corresponding to zero input voltage
  - **Input Offset Measurement:** Output voltage and statistical results over a large number of zero voltage measurements.
  - **Input Offset Current:** Typical value for information; Maximum channel input offset current, not considering the input resistance.
  - **Input resistance:** Typical value for information: DAE input resistance at the connector, during internal auto-zeroing and during measurement.
  - **Low Battery Alarm Voltage:** Typical value for information. Below this voltage, a battery alarm signal is generated.
  - **Power consumption:** Typical value for information. Supply currents in various operating modes.



### DC Voltage Measurement

A/D - Converter Resolution nominal

High Range: 1LSB = 6.1 $\mu$ V, full range = -100...+300 mV

Low Range: 1LSB = 61nV, full range = -1.....+3mV

DASY measurement parameters: Auto Zero Time: 3 sec; Measuring time: 3 sec

Calibration Factors	X	Y	Z
High Range	403.960 $\pm$ 0.02% (k=2)	404.555 $\pm$ 0.02% (k=2)	404.410 $\pm$ 0.02% (k=2)
Low Range	3.96356 $\pm$ 1.50% (k=2)	3.99426 $\pm$ 1.50% (k=2)	3.98917 $\pm$ 1.50% (k=2)

### Connector Angle

Connector Angle to be used in DASY system	346.0 $^{\circ}$ $\pm$ 1 $^{\circ}$
---	-------------------------------------

## Appendix (Additional assessments outside the scope of SCS0108)

### 1. DC Voltage Linearity

High Range	Reading ( $\mu\text{V}$ )	Difference ( $\mu\text{V}$ )	Error (%)
Channel X + Input	200034.86	-0.39	-0.00
Channel X + Input	20003.91	0.08	0.00
Channel X - Input	-20004.06	2.30	-0.01
Channel Y + Input	200030.10	-4.54	-0.00
Channel Y + Input	20002.16	-1.57	-0.01
Channel Y - Input	-20008.43	-1.92	0.01
Channel Z + Input	200033.46	-1.30	-0.00
Channel Z + Input	20001.75	-2.02	-0.01
Channel Z - Input	-20007.64	-1.17	0.01

Low Range	Reading ( $\mu\text{V}$ )	Difference ( $\mu\text{V}$ )	Error (%)
Channel X + Input	1999.82	-0.21	-0.01
Channel X + Input	200.62	0.66	0.33
Channel X - Input	-199.52	0.33	-0.17
Channel Y + Input	1999.07	-0.91	-0.05
Channel Y + Input	199.52	-0.43	-0.22
Channel Y - Input	-200.66	-0.91	0.45
Channel Z + Input	2000.04	0.16	0.01
Channel Z + Input	198.64	-1.23	-0.61
Channel Z - Input	-201.54	-1.60	0.80

### 2. Common mode sensitivity

DASY measurement parameters: Auto Zero Time: 3 sec; Measuring time: 3 sec

	Common mode Input Voltage (mV)	High Range Average Reading ( $\mu\text{V}$ )	Low Range Average Reading ( $\mu\text{V}$ )
Channel X	200	8.78	6.60
	- 200	-5.10	-6.99
Channel Y	200	-9.67	-10.19
	- 200	8.85	8.71
Channel Z	200	-11.72	-11.73
	- 200	9.31	9.26

### 3. Channel separation

DASY measurement parameters: Auto Zero Time: 3 sec; Measuring time: 3 sec

	Input Voltage (mV)	Channel X ( $\mu\text{V}$ )	Channel Y ( $\mu\text{V}$ )	Channel Z ( $\mu\text{V}$ )
Channel X	200	-	3.42	-4.09
Channel Y	200	9.08	-	5.08
Channel Z	200	10.43	6.73	-

**4. AD-Converter Values with inputs shorted**

DASY measurement parameters: Auto Zero Time: 3 sec; Measuring time: 3 sec

	High Range (LSB)	Low Range (LSB)
Channel X	15764	16859
Channel Y	16054	15484
Channel Z	16123	15753

**5. Input Offset Measurement**

DASY measurement parameters: Auto Zero Time: 3 sec; Measuring time: 3 sec

Input 10M $\Omega$ 

	Average ( $\mu$ V)	min. Offset ( $\mu$ V)	max. Offset ( $\mu$ V)	Std. Deviation ( $\mu$ V)
Channel X	0.17	-0.42	1.02	0.30
Channel Y	0.90	-0.06	1.92	0.37
Channel Z	0.36	-1.19	1.48	0.41

**6. Input Offset Current**

Nominal Input circuitry offset current on all channels: &lt;25fA

**7. Input Resistance** (Typical values for information)

	Zeroing (kOhm)	Measuring (MOhm)
Channel X	200	200
Channel Y	200	200
Channel Z	200	200

**8. Low Battery Alarm Voltage** (Typical values for information)

Typical values	Alarm Level (VDC)
Supply (+ Vcc)	+7.9
Supply (- Vcc)	-7.6

**9. Power Consumption** (Typical values for information)

Typical values	Switched off (mA)	Stand by (mA)	Transmitting (mA)
Supply (+ Vcc)	+0.01	+6	+14
Supply (- Vcc)	-0.01	-8	-9

**Calibration Laboratory of  
Schmid & Partner  
Engineering AG**  
Zeughausstrasse 43, 8004 Zurich, Switzerland



**S** Schweizerischer Kalibrierdienst  
**C** Service suisse d'étalonnage  
**S** Servizio svizzero di taratura  
Swiss Calibration Service

Accredited by the Swiss Accreditation Service (SAS)  
The Swiss Accreditation Service is one of the signatories to the EA  
Multilateral Agreement for the recognition of calibration certificates

Accreditation No.: **SCS 0108**

Client **Intertek HK (Auden)**

Certificate No: **EX3-7322\_Jun15**

## CALIBRATION CERTIFICATE

Object **EX3DV4 - SN:7322**

Calibration procedure(s) **QA CAL-01.v9, QA CAL-12.v9, QA CAL-14.v4, QA CAL-23.v5,  
QA CAL-25.v6  
Calibration procedure for dosimetric E-field probes**

Calibration date: **June 10, 2015**

This calibration certificate documents the traceability to national standards, which realize the physical units of measurements (SI).  
The measurements and the uncertainties with confidence probability are given on the following pages and are part of the certificate.

All calibrations have been conducted in the closed laboratory facility: environment temperature ( $22 \pm 3$ )°C and humidity < 70%.

Calibration Equipment used (M&TE critical for calibration)

Primary Standards	ID	Cal Date (Certificate No.)	Scheduled Calibration
Power meter E4419B	GB41293874	01-Apr-15 (No. 217-02128)	Mar-16
Power sensor E4412A	MY41498087	01-Apr-15 (No. 217-02128)	Mar-16
Reference 3 dB Attenuator	SN: S5054 (3c)	01-Apr-15 (No. 217-02129)	Mar-16
Reference 20 dB Attenuator	SN: S5277 (20x)	01-Apr-15 (No. 217-02132)	Mar-16
Reference 30 dB Attenuator	SN: S5129 (30b)	01-Apr-15 (No. 217-02133)	Mar-16
Reference Probe ES3DV2	SN: 3013	30-Dec-14 (No. ES3-3013_Dec14)	Dec-15
DAE4	SN: 660	14-Jan-15 (No. DAE4-660_Jan15)	Jan-16
Secondary Standards	ID	Check Date (in house)	Scheduled Check
RF generator HP 8648C	US3642U01700	4-Aug-99 (in house check Apr-13)	In house check: Apr-16
Network Analyzer HP 8753E	US37390585	18-Oct-01 (in house check Oct-14)	In house check: Oct-15

	Name	Function	Signature
Calibrated by:	Jeton Kastrati	Laboratory Technician	
Approved by:	Katja Pokovic	Technical Manager	
Issued: June 10, 2015			
This calibration certificate shall not be reproduced except in full without written approval of the laboratory.			



**Calibration Laboratory of**  
**Schmid & Partner**  
**Engineering AG**  
 Zeughausstrasse 43, 8004 Zurich, Switzerland



**S** Schweizerischer Kalibrierdienst  
**C** Service suisse d'étalonnage  
**S** Servizio svizzero di taratura  
**S** Swiss Calibration Service

Accredited by the Swiss Accreditation Service (SAS)  
 The Swiss Accreditation Service is one of the signatories to the EA  
 Multilateral Agreement for the recognition of calibration certificates

Accreditation No.: **SCS 0108**

**Glossary:**

TSL	tissue simulating liquid
NORM <sub>x,y,z</sub>	sensitivity in free space
ConvF	sensitivity in TSL / NORM <sub>x,y,z</sub>
DCP	diode compression point
CF	crest factor (1/duty_cycle) of the RF signal
A, B, C, D	modulation dependent linearization parameters
Polarization $\varphi$	$\varphi$ rotation around probe axis
Polarization $\theta$	$\theta$ rotation around an axis that is in the plane normal to probe axis (at measurement center), i.e., $\theta = 0$ is normal to probe axis
Connector Angle	information used in DASY system to align probe sensor X to the robot coordinate system

**Calibration is Performed According to the Following Standards:**

- IEEE Std 1528-2013, "IEEE Recommended Practice for Determining the Peak Spatial-Averaged Specific Absorption Rate (SAR) in the Human Head from Wireless Communications Devices: Measurement Techniques", June 2013
- IEC 62209-1, "Procedure to measure the Specific Absorption Rate (SAR) for hand-held devices used in close proximity to the ear (frequency range of 300 MHz to 3 GHz)", February 2005

**Methods Applied and Interpretation of Parameters:**

- NORM<sub>x,y,z</sub>:** Assessed for E-field polarization  $\theta = 0$  ( $f \leq 900$  MHz in TEM-cell;  $f > 1800$  MHz: R22 waveguide). NORM<sub>x,y,z</sub> are only intermediate values, i.e., the uncertainties of NORM<sub>x,y,z</sub> does not affect the  $E^2$ -field uncertainty inside TSL (see below ConvF).
- NORM( $f$ )<sub>x,y,z</sub> = NORM<sub>x,y,z</sub> \* frequency\_response** (see Frequency Response Chart). This linearization is implemented in DASY4 software versions later than 4.2. The uncertainty of the frequency response is included in the stated uncertainty of ConvF.
- DCP<sub>x,y,z</sub>:** DCP are numerical linearization parameters assessed based on the data of power sweep with CW signal (no uncertainty required). DCP does not depend on frequency nor media.
- PAR:** PAR is the Peak to Average Ratio that is not calibrated but determined based on the signal characteristics
- A<sub>x,y,z</sub>; B<sub>x,y,z</sub>; C<sub>x,y,z</sub>; D<sub>x,y,z</sub>; VR<sub>x,y,z</sub>; A, B, C, D** are numerical linearization parameters assessed based on the data of power sweep for specific modulation signal. The parameters do not depend on frequency nor media. VR is the maximum calibration range expressed in RMS voltage across the diode.
- ConvF and Boundary Effect Parameters:** Assessed in flat phantom using E-field (or Temperature Transfer Standard for  $f \leq 800$  MHz) and inside waveguide using analytical field distributions based on power measurements for  $f > 800$  MHz. The same setups are used for assessment of the parameters applied for boundary compensation (alpha, depth) of which typical uncertainty values are given. These parameters are used in DASY4 software to improve probe accuracy close to the boundary. The sensitivity in TSL corresponds to NORM<sub>x,y,z</sub> \* ConvF whereby the uncertainty corresponds to that given for ConvF. A frequency dependent ConvF is used in DASY version 4.4 and higher which allows extending the validity from  $\pm 50$  MHz to  $\pm 100$  MHz.
- Spherical isotropy (3D deviation from isotropy):** in a field of low gradients realized using a flat phantom exposed by a patch antenna.
- Sensor Offset:** The sensor offset corresponds to the offset of virtual measurement center from the probe tip (on probe axis). No tolerance required.
- Connector Angle:** The angle is assessed using the information gained by determining the NORM<sub>x</sub> (no uncertainty required).

EX3DV4 – SN:7322

June 10, 2015

# Probe EX3DV4

## SN:7322

Manufactured: March 17, 2015  
Calibrated: June 10, 2015

Calibrated for DASY/EASY Systems  
(Note: non-compatible with DASY2 system!)

EX3DV4- SN:7322

June 10, 2015

**DASY/EASY - Parameters of Probe: EX3DV4 - SN:7322****Basic Calibration Parameters**

	Sensor X	Sensor Y	Sensor Z	Unc (k=2)
Norm ( $\mu\text{V}/(\text{V/m})^2$ ) <sup>A</sup>	0.45	0.53	0.55	$\pm 10.1 \%$
DCP (mV) <sup>B</sup>	95.1	99.7	95.5	

**Modulation Calibration Parameters**

UID	Communication System Name		A dB	B dB $\sqrt{\mu\text{V}}$	C	D dB	VR mV	Unc <sup>E</sup> (k=2)
0	CW	X	0.0	0.0	1.0	0.00	129.4	$\pm 3.5 \%$
		Y	0.0	0.0	1.0		141.5	
		Z	0.0	0.0	1.0		139.2	

The reported uncertainty of measurement is stated as the standard uncertainty of measurement multiplied by the coverage factor  $k=2$ , which for a normal distribution corresponds to a coverage probability of approximately 95%.

<sup>A</sup> The uncertainties of NormX,Y,Z do not affect the  $E^2$ -field uncertainty inside TSL (see Pages 5 and 6).

<sup>B</sup> Numerical linearization parameter; uncertainty not required.

<sup>E</sup> Uncertainty is determined using the max. deviation from linear response applying rectangular distribution and is expressed for the square of the field value.

EX3DV4- SN:7322

June 10, 2015

## DASY/EASY - Parameters of Probe: EX3DV4 - SN:7322

### Calibration Parameter Determined in Head Tissue Simulating Media

f (MHz) <sup>c</sup>	Relative Permittivity <sup>f</sup>	Conductivity (S/m) <sup>f</sup>	ConvF X	ConvF Y	ConvF Z	Alpha <sup>g</sup>	Depth <sup>g</sup> (mm)	Unct. (k=2)
450	43.5	0.87	11.96	11.96	11.96	0.19	1.30	± 13.3 %
750	41.9	0.89	9.71	9.71	9.71	0.26	1.13	± 12.0 %
835	41.5	0.90	9.46	9.46	9.46	0.23	1.22	± 12.0 %
900	41.5	0.97	9.18	9.18	9.18	0.21	1.46	± 12.0 %
1750	40.1	1.37	8.05	8.05	8.05	0.28	0.80	± 12.0 %
1900	40.0	1.40	7.76	7.76	7.76	0.30	0.80	± 12.0 %
2000	40.0	1.40	7.68	7.68	7.68	0.37	0.80	± 12.0 %
2300	39.5	1.67	7.39	7.39	7.39	0.33	0.80	± 12.0 %
2450	39.2	1.80	6.99	6.99	6.99	0.29	0.99	± 12.0 %
2600	39.0	1.96	6.73	6.73	6.73	0.39	0.80	± 12.0 %
5200	36.0	4.66	5.51	5.51	5.51	0.20	1.80	± 13.1 %
5300	35.9	4.76	5.30	5.30	5.30	0.20	1.80	± 13.1 %
5500	35.6	4.96	5.04	5.04	5.04	0.30	1.80	± 13.1 %
5600	35.5	5.07	4.85	4.85	4.85	0.30	1.80	± 13.1 %
5800	35.3	5.27	4.70	4.70	4.70	0.35	1.80	± 13.1 %

<sup>c</sup> Frequency validity above 300 MHz of ± 100 MHz only applies for DASY v4.4 and higher (see Page 2), else it is restricted to ± 50 MHz. The uncertainty is the RSS of the ConvF uncertainty at calibration frequency and the uncertainty for the indicated frequency band. Frequency validity below 300 MHz is ± 10, 25, 40, 50 and 70 MHz for ConvF assessments at 30, 64, 128, 150 and 220 MHz respectively. Above 5 GHz frequency validity can be extended to ± 110 MHz.

<sup>f</sup> At frequencies below 3 GHz, the validity of tissue parameters ( $\epsilon$  and  $\sigma$ ) can be relaxed to ± 10% if liquid compensation formula is applied to measured SAR values. At frequencies above 3 GHz, the validity of tissue parameters ( $\epsilon$  and  $\sigma$ ) is restricted to ± 5%. The uncertainty is the RSS of the ConvF uncertainty for indicated target tissue parameters.

<sup>g</sup> Alpha/Depth are determined during calibration. SPEAG warrants that the remaining deviation due to the boundary effect after compensation is always less than ± 1% for frequencies below 3 GHz and below ± 2% for frequencies between 3-6 GHz at any distance larger than half the probe tip diameter from the boundary.



EX3DV4- SN:7322

June 10, 2015

## DASY/EASY - Parameters of Probe: EX3DV4 - SN:7322

### Calibration Parameter Determined in Body Tissue Simulating Media

f (MHz) <sup>c</sup>	Relative Permittivity <sup>f</sup>	Conductivity (S/m) <sup>f</sup>	ConvF X	ConvF Y	ConvF Z	Alpha <sup>g</sup>	Depth <sup>a</sup> (mm)	Unct. (k=2)
450	56.7	0.94	11.17	11.17	11.17	0.10	1.20	± 13.3 %
750	55.5	0.96	9.66	9.66	9.66	0.49	0.86	± 12.0 %
835	55.2	0.97	9.72	9.72	9.72	0.32	1.11	± 12.0 %
900	55.0	1.05	9.22	9.22	9.22	0.24	1.26	± 12.0 %
1750	53.4	1.49	7.72	7.72	7.72	0.38	0.80	± 12.0 %
1900	53.3	1.52	7.49	7.49	7.49	0.43	0.80	± 12.0 %
2000	53.3	1.52	7.60	7.60	7.60	0.31	0.95	± 12.0 %
2300	52.9	1.81	7.25	7.25	7.25	0.33	0.90	± 12.0 %
2450	52.7	1.95	7.08	7.08	7.08	0.30	0.80	± 12.0 %
2600	52.5	2.16	6.91	6.91	6.91	0.30	0.80	± 12.0 %
5200	49.0	5.30	4.64	4.64	4.64	0.40	1.90	± 13.1 %
5300	48.9	5.42	4.32	4.32	4.32	0.45	1.90	± 13.1 %
5500	48.6	5.65	4.06	4.06	4.06	0.45	1.90	± 13.1 %
5600	48.5	5.77	3.73	3.73	3.73	0.50	1.90	± 13.1 %
5800	48.2	6.00	4.09	4.09	4.09	0.50	1.90	± 13.1 %

<sup>c</sup> Frequency validity above 300 MHz of ± 100 MHz only applies for DASY v4.4 and higher (see Page 2), else it is restricted to ± 50 MHz. The uncertainty is the RSS of the ConvF uncertainty at calibration frequency and the uncertainty for the indicated frequency band. Frequency validity below 300 MHz is ± 10, 25, 40, 50 and 70 MHz for ConvF assessments at 30, 64, 128, 150 and 220 MHz respectively. Above 5 GHz frequency validity can be extended to ± 110 MHz.

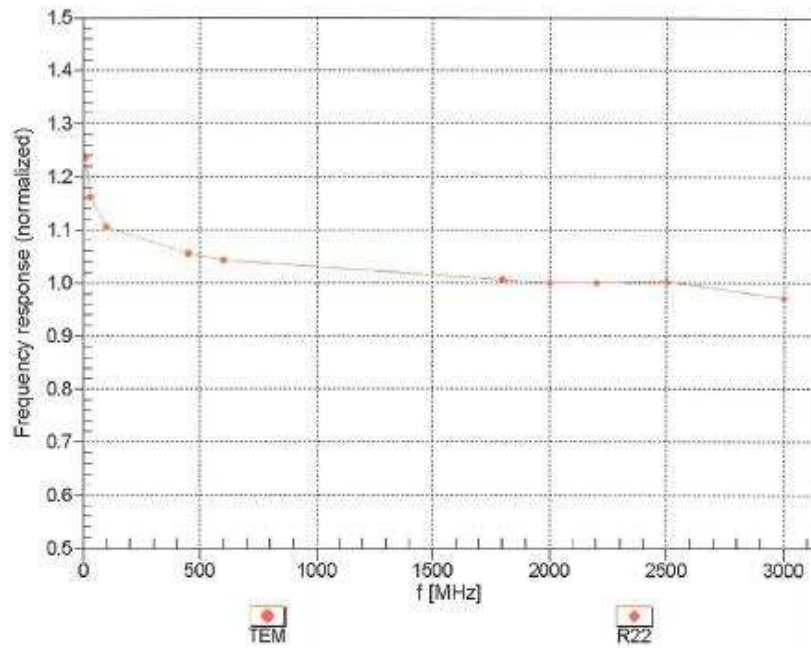
<sup>f</sup> At frequencies below 3 GHz, the validity of tissue parameters ( $\epsilon$  and  $\sigma$ ) can be relaxed to ± 10% if liquid compensation formula is applied to measured SAR values. At frequencies above 3 GHz, the validity of tissue parameters ( $\epsilon$  and  $\sigma$ ) is restricted to ± 5%. The uncertainty is the RSS of the ConvF uncertainty for indicated target tissue parameters.

<sup>g</sup> Alpha/Depth are determined during calibration. SPEAG warrants that the remaining deviation due to the boundary effect after compensation is always less than ± 1% for frequencies below 3 GHz and below ± 2% for frequencies between 3-6 GHz at any distance larger than half the probe tip diameter from the boundary.

EX3DV4- SN:7322

June 10, 2015

### Frequency Response of E-Field (TEM-Cell:ifi110 EXX, Waveguide: R22)



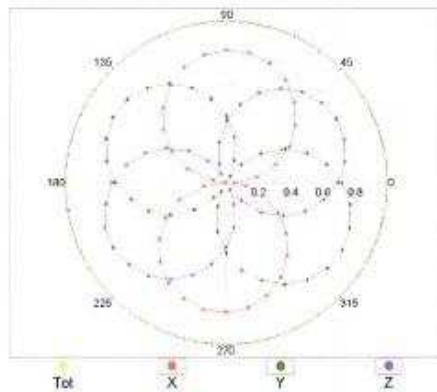
Uncertainty of Frequency Response of E-field:  $\pm 6.3\%$  ( $k=2$ )

EX3DV4- SN:7322

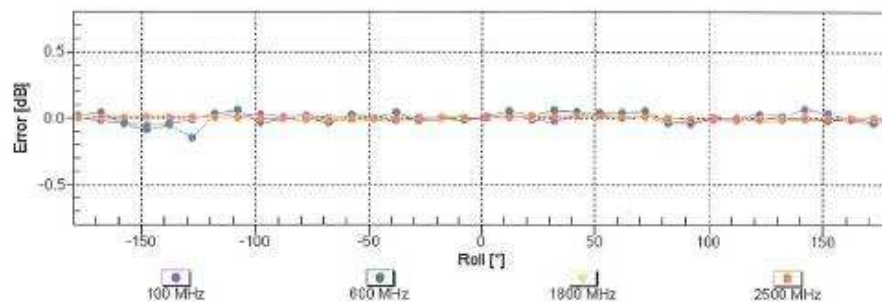
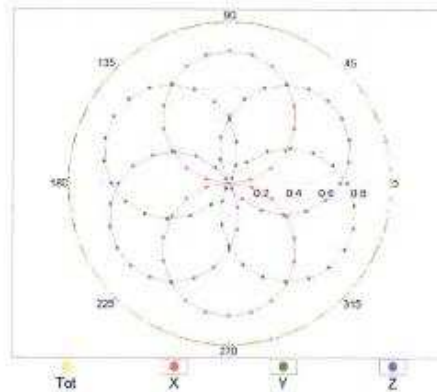
June 10, 2015

### Receiving Pattern ( $\phi$ ), $\theta = 0^\circ$

f=600 MHz,TEM



f=1800 MHz,R22

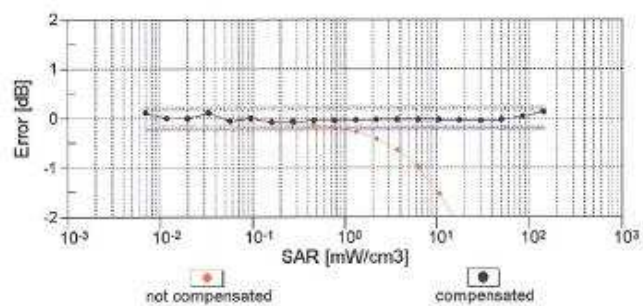
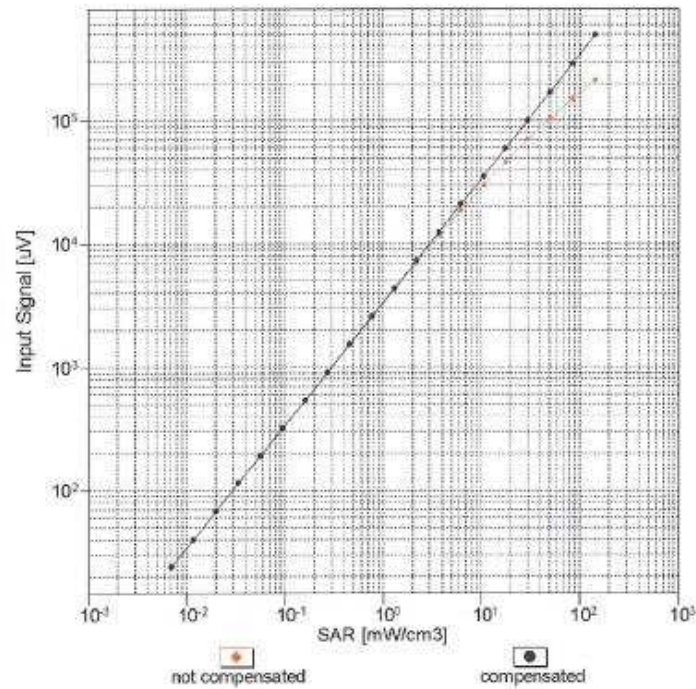


Uncertainty of Axial Isotropy Assessment:  $\pm 0.5\%$  ( $k=2$ )

EX3DV4- SN:7322

June 10, 2015

# Dynamic Range $f(\text{SAR}_{\text{head}})$ (TEM cell, $f_{\text{eval}} = 1900 \text{ MHz}$ )

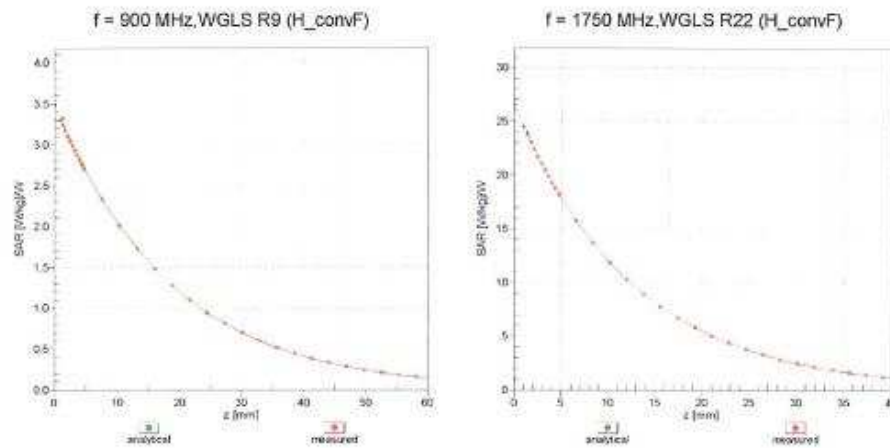


Uncertainty of Linearity Assessment:  $\pm 0.6\%$  ( $k=2$ )

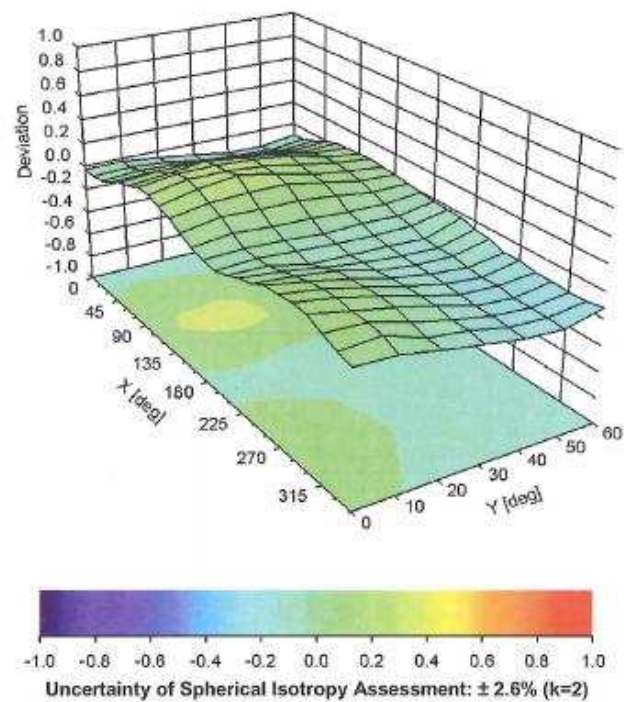
EX3DV4- SN:7322

June 10, 2015

## Conversion Factor Assessment



## Deviation from Isotropy in Liquid Error ( $\phi, \theta$ ), $f = 900$ MHz



EX3DV4- SN:7322

June 10, 2015

**DASY/EASY - Parameters of Probe: EX3DV4 - SN:7322****Other Probe Parameters**

Sensor Arrangement	Triangular
Connector Angle (°)	42.2
Mechanical Surface Detection Mode	enabled
Optical Surface Detection Mode	disabled
Probe Overall Length	337 mm
Probe Body Diameter	10 mm
Tip Length	9 mm
Tip Diameter	2.5 mm
Probe Tip to Sensor X Calibration Point	1 mm
Probe Tip to Sensor Y Calibration Point	1 mm
Probe Tip to Sensor Z Calibration Point	1 mm
Recommended Measurement Distance from Surface	1.4 mm



**Calibration Laboratory of  
Schmid & Partner  
Engineering AG**  
Zeughausstrasse 43, 8004 Zurich, Switzerland



**S** Schweizerischer Kalibrierdienst  
**C** Service suisse d'étalonnage  
**S** Servizio svizzero di taratura  
**S** Swiss Calibration Service

Accredited by the Swiss Accreditation Service (SAS)  
The Swiss Accreditation Service is one of the signatories to the EA  
Multilateral Agreement for the recognition of calibration certificates

Accreditation No.: **SCS 0108**

Client **Intertek HK (Auden)**

Certificate No: **D2450V2-966\_Jun15**

## CALIBRATION CERTIFICATE

Object **D2450V2 - SN: 966**

Calibration procedure(s) **QA CAL-05.v9  
Calibration procedure for dipole validation kits above 700 MHz**

Calibration date: **June 10, 2015**

This calibration certificate documents the traceability to national standards, which realize the physical units of measurements (SI).  
The measurements and the uncertainties with confidence probability are given on the following pages and are part of the certificate.

All calibrations have been conducted in the closed laboratory facility: environment temperature  $(22 \pm 3)^{\circ}\text{C}$  and humidity  $< 70\%$ .

Calibration Equipment used (M&TE critical for calibration)

Primary Standards	ID #	Cal Date (Certificate No.)	Scheduled Calibration
Power meter EPM-442A	GB37480704	07-Oct-14 (No. 217-02020)	Oct-15
Power sensor HP 8481A	US37292783	07-Oct-14 (No. 217-02020)	Oct-15
Power sensor HP 8481A	MY41092317	07-Oct-14 (No. 217-02021)	Oct-15
Reference 20 dB Attenuator	SN: 5058 (20k)	01-Apr-15 (No. 217-02131)	Mar-16
Type-N mismatch combination	SN: 5047.2 / 06327	01-Apr-15 (No. 217-02134)	Mar-16
Reference Probe ES3DV3	SN: 3205	30-Dec-14 (No. ES3-3205_Dec14)	Dec-15
DAE4	SN: 601	18-Aug-14 (No. DAE4-601_Aug14)	Aug-15
Secondary Standards	ID #	Check Date (in house)	Scheduled Check
RF generator R&S SMT-06	100005	04-Aug-99 (in house check Oct-13)	In house check: Oct-16
Network Analyzer HP 8753E	US37390565 S4206	18-Oct-01 (in house check Oct-14)	In house check: Oct-15

Calibrated by:	Name <b>Israe Elinaouq</b>	Function <b>Laboratory Technician</b>	Signature 
Approved by:	<b>Katja Pokovic</b>	<b>Technical Manager</b>	

Issued: June 10, 2015

This calibration certificate shall not be reproduced except in full without written approval of the laboratory.

Certificate No: D2450V2-966\_Jun15

Page 1 of 8

**Calibration Laboratory of  
Schmid & Partner  
Engineering AG**  
Zeughausstrasse 43, 8004 Zurich, Switzerland



**S** Schweizerischer Kalibrierdienst  
**C** Service suisse d'étalonnage  
**S** Servizio svizzero di taratura  
**S** Swiss Calibration Service

Accredited by the Swiss Accreditation Service (SAS)  
The Swiss Accreditation Service is one of the signatories to the EA  
Multilateral Agreement for the recognition of calibration certificates

Accreditation No.: **SCS 0108**

**Glossary:**

TSL	tissue simulating liquid
ConvF	sensitivity in TSL / NORM x,y,z
N/A	not applicable or not measured

**Calibration is Performed According to the Following Standards:**

- a) IEEE Std 1528-2013, "IEEE Recommended Practice for Determining the Peak Spatial-Averaged Specific Absorption Rate (SAR) in the Human Head from Wireless Communications Devices: Measurement Techniques", June 2013
- b) IEC 62209-1, "Procedure to measure the Specific Absorption Rate (SAR) for hand-held devices used in close proximity to the ear (frequency range of 300 MHz to 3 GHz)", February 2005
- c) KDB 865664, "SAR Measurement Requirements for 100 MHz to 6 GHz"

**Additional Documentation:**

- d) DASY4/5 System Handbook

**Methods Applied and Interpretation of Parameters:**

- *Measurement Conditions:* Further details are available from the Validation Report at the end of the certificate. All figures stated in the certificate are valid at the frequency indicated.
- *Antenna Parameters with TSL:* The dipole is mounted with the spacer to position its feed point exactly below the center marking of the flat phantom section, with the arms oriented parallel to the body axis.
- *Feed Point Impedance and Return Loss:* These parameters are measured with the dipole positioned under the liquid filled phantom. The impedance stated is transformed from the measurement at the SMA connector to the feed point. The Return Loss ensures low reflected power. No uncertainty required.
- *Electrical Delay:* One-way delay between the SMA connector and the antenna feed point. No uncertainty required.
- *SAR measured:* SAR measured at the stated antenna input power.
- *SAR normalized:* SAR as measured, normalized to an input power of 1 W at the antenna connector.
- *SAR for nominal TSL parameters:* The measured TSL parameters are used to calculate the nominal SAR result.

The reported uncertainty of measurement is stated as the standard uncertainty of measurement multiplied by the coverage factor  $k=2$ , which for a normal distribution corresponds to a coverage probability of approximately 95%.



**Measurement Conditions**

DASY system configuration, as far as not given on page 1.

DASY Version	DASY5	V52.8.8
Extrapolation	Advanced Extrapolation	
Phantom	Modular Flat Phantom	
Distance Dipole Center - TSL	10 mm	with Spacer
Zoom Scan Resolution	dx, dy, dz = 5 mm	
Frequency	2450 MHz $\pm$ 1 MHz	

**Head TSL parameters**

The following parameters and calculations were applied.

	Temperature	Permittivity	Conductivity
Nominal Head TSL parameters	22.0 °C	39.2	1.80 mho/m
Measured Head TSL parameters	(22.0 $\pm$ 0.2) °C	37.9 $\pm$ 6 %	1.84 mho/m $\pm$ 6 %
Head TSL temperature change during test	< 0.5 °C	----	----

**SAR result with Head TSL**

SAR averaged over 1 cm <sup>3</sup> (1 g) of Head TSL	Condition	
SAR measured	250 mW input power	13.7 W/kg
SAR for nominal Head TSL parameters	normalized to 1W	53.8 W/kg $\pm$ 17.0 % (k=2)

SAR averaged over 10 cm <sup>3</sup> (10 g) of Head TSL	condition	
SAR measured	250 mW input power	6.41 W/kg
SAR for nominal Head TSL parameters	normalized to 1W	25.4 W/kg $\pm$ 16.5 % (k=2)

**Body TSL parameters**

The following parameters and calculations were applied.

	Temperature	Permittivity	Conductivity
Nominal Body TSL parameters	22.0 °C	52.7	1.95 mho/m
Measured Body TSL parameters	(22.0 $\pm$ 0.2) °C	50.7 $\pm$ 6 %	2.03 mho/m $\pm$ 6 %
Body TSL temperature change during test	< 0.5 °C	----	----

**SAR result with Body TSL**

SAR averaged over 1 cm <sup>3</sup> (1 g) of Body TSL	Condition	
SAR measured	250 mW input power	13.4 W/kg
SAR for nominal Body TSL parameters	normalized to 1W	52.1 W/kg $\pm$ 17.0 % (k=2)

SAR averaged over 10 cm <sup>3</sup> (10 g) of Body TSL	condition	
SAR measured	250 mW input power	6.22 W/kg
SAR for nominal Body TSL parameters	normalized to 1W	24.5 W/kg $\pm$ 16.5 % (k=2)

**Appendix (Additional assessments outside the scope of SCS 0108)****Antenna Parameters with Head TSL**

Impedance, transformed to feed point	53.3 $\Omega$ + 2.0 j $\Omega$
Return Loss	- 28.6 dB

**Antenna Parameters with Body TSL**

Impedance, transformed to feed point	50.1 $\Omega$ + 3.9 j $\Omega$
Return Loss	- 28.2 dB

**General Antenna Parameters and Design**

Electrical Delay (one direction)	1.156 ns
----------------------------------	----------

After long term use with 100W radiated power, only a slight warming of the dipole near the feedpoint can be measured.

The dipole is made of standard semirigid coaxial cable. The center conductor of the feeding line is directly connected to the second arm of the dipole. The antenna is therefore short-circuited for DC-signals. On some of the dipoles, small end caps are added to the dipole arms in order to improve matching when loaded according to the position as explained in the "Measurement Conditions" paragraph. The SAR data are not affected by this change. The overall dipole length is still according to the Standard.

No excessive force must be applied to the dipole arms, because they might bend or the soldered connections near the feedpoint may be damaged.

**Additional EUT Data**

Manufactured by	SPEAG
Manufactured on	November 19, 2014

**DASY5 Validation Report for Head TSL**

Date: 10.06.2015

Test Laboratory: SPEAG, Zurich, Switzerland

**DUT: Dipole 2450 MHz; Type: D2450V2; Serial: D2450V2 - SN: 966**

Communication System: UID 0 - CW; Frequency: 2450 MHz

Medium parameters used:  $f = 2450$  MHz;  $\sigma = 1.84$  S/m;  $\epsilon_r = 37.9$ ;  $\rho = 1000$  kg/m<sup>3</sup>

Phantom section: Flat Section

Measurement Standard: DASY5 (IEEE/IEC/ANSI C63.19-2011)

DASY52 Configuration:

- Probe: ES3DV3 - SN3205; ConvF(4.54, 4.54, 4.54); Calibrated: 30.12.2014;
- Sensor-Surface: 3mm (Mechanical Surface Detection)
- Electronics: DAE4 Sn601; Calibrated: 18.08.2014
- Phantom: Flat Phantom 5.0 (front); Type: QD000P50AA; Serial: 1001
- DASY52 52.8.8(1222); SEMCAD X 14.6.10(7331)

**Dipole Calibration for Head Tissue/Pin=250 mW, d=10mm/Zoom Scan (7x7x7)/Cube 0:**

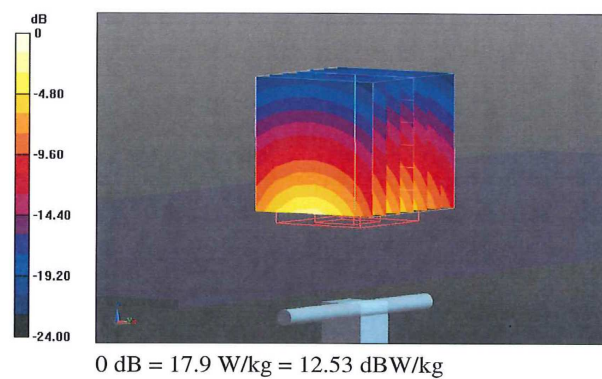
Measurement grid: dx=5mm, dy=5mm, dz=5mm

Reference Value = 102.4 V/m; Power Drift = 0.05 dB

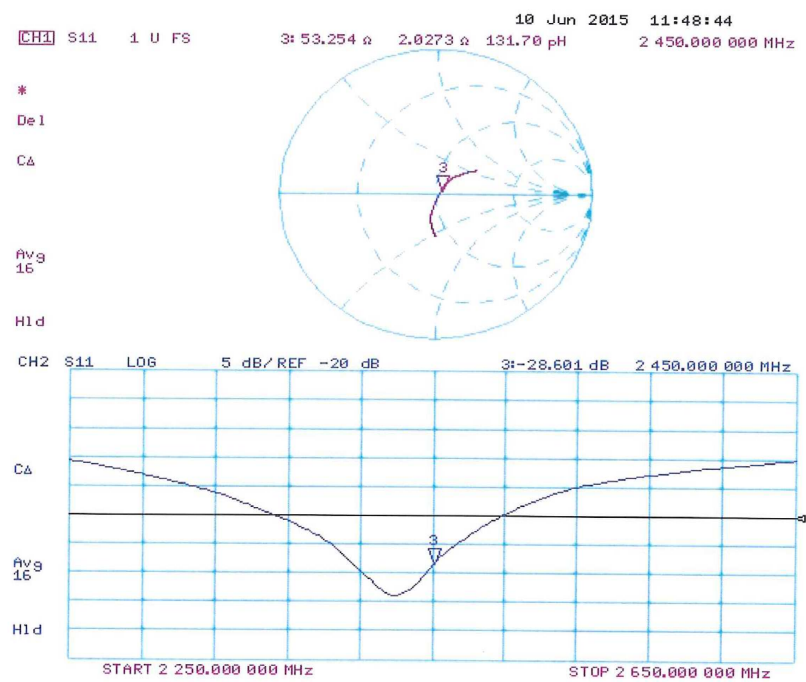
Peak SAR (extrapolated) = 28.2 W/kg

**SAR(1 g) = 13.7 W/kg; SAR(10 g) = 6.41 W/kg**

Maximum value of SAR (measured) = 17.9 W/kg



**Impedance Measurement Plot for Head TSL**



**DASY5 Validation Report for Body TSL**

Date: 10.06.2015

Test Laboratory: SPEAG, Zurich, Switzerland

**DUT: Dipole 2450 MHz; Type: D2450V2; Serial: D2450V2 - SN: 966**

Communication System: UID 0 - CW; Frequency: 2450 MHz

Medium parameters used:  $f = 2450$  MHz;  $\sigma = 2.03$  S/m;  $\epsilon_r = 50.7$ ;  $\rho = 1000$  kg/m<sup>3</sup>

Phantom section: Flat Section

Measurement Standard: DASY5 (IEEE/IEC/ANSI C63.19-2011)

**DASY52 Configuration:**

- Probe: ES3DV3 - SN3205; ConvF(4.32, 4.32, 4.32); Calibrated: 30.12.2014;
- Sensor-Surface: 3mm (Mechanical Surface Detection)
- Electronics: DAE4 Sn601; Calibrated: 18.08.2014
- Phantom: Flat Phantom 5.0 (back); Type: QD000P50AA; Serial: 1002
- DASY52 52.8.8(1222); SEMCAD X 14.6.10(7331)

**Dipole Calibration for Body Tissue/Pin=250 mW, d=10mm/Zoom Scan (7x7x7)/Cube 0:**

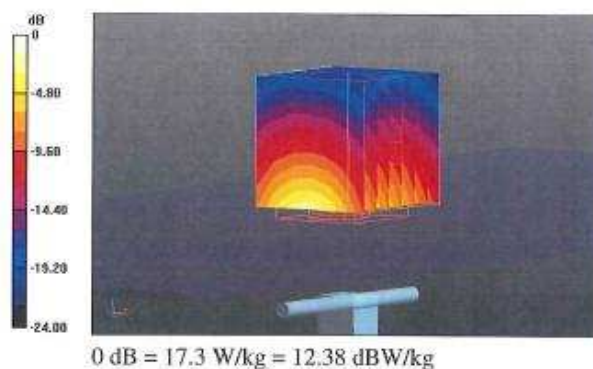
Measurement grid: dx=5mm, dy=5mm, dz=5mm

Reference Value = 95.29 V/m; Power Drift = 0.03 dB

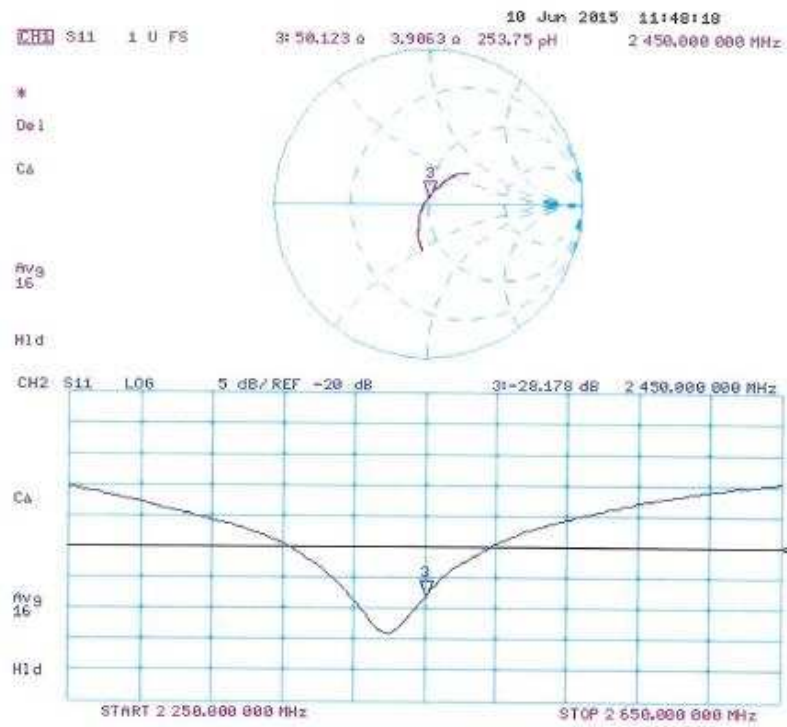
Peak SAR (extrapolated) = 27.6 W/kg

**SAR(1 g) = 13.4 W/kg; SAR(10 g) = 6.22 W/kg**

Maximum value of SAR (measured) = 17.3 W/kg



### Impedance Measurement Plot for Body TSL



\*\*\*\*\*End The Report\*\*\*\*\*