



福州市瀚宇正达电子有限公司

Word Easy Electronics Co.,Ltd.

规格承认书

SPECIFICATION FOR APPROVAL

日期 2020/11/02
Date

编号 20110201
File No

版本 1.0
Revision

品名 BT Antenna L=100mm MHF
PART NAME:

供方料号 WE007N.F0082.V01
SUPPLIER NO:

客户确认 CUSTOMER APPROVED BY

APPROVAL

CHIEF

SUPERVISOR

供方确认 SUPPLIER SIGNATURE

APPROVAL

CHECK

DESIGN

工程专用章
Wu Jie

Zhou Hongtao

Zhu Zhiyong

WE-RD-F01-A



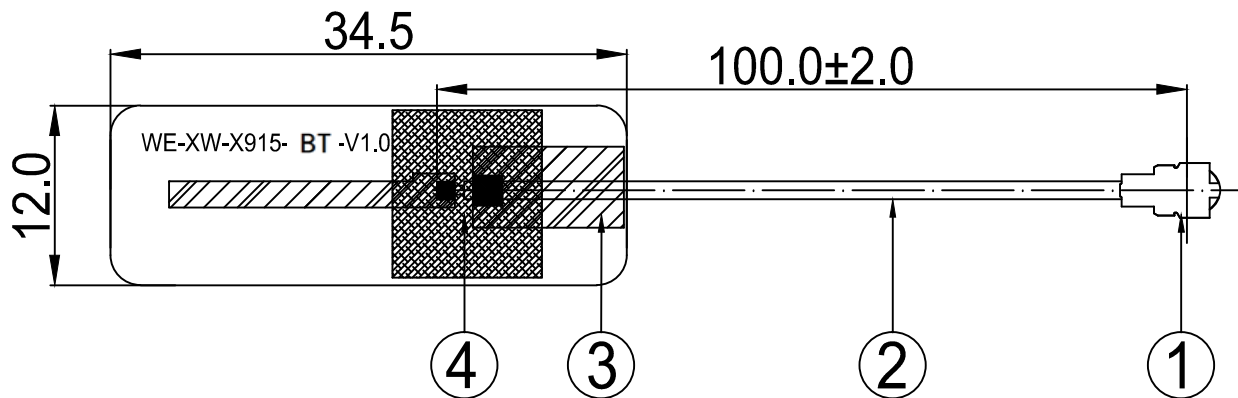
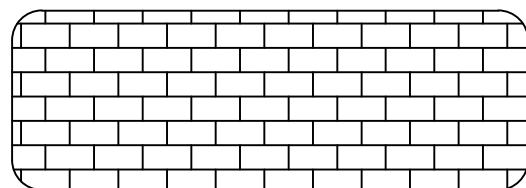
承认书项目表

NO.	内容 (Contents)	页数 (Number of Page)	页码 (Page Code)
1	承认书封面 (Spec Cover)	1	1
2	承认书项目表 (Spec Item)	1	2
3	工程成品图 (Drawing)	1	3
4	天线规格 (Antenna Specification)	1	4
5	S参数测试 (S Parameter)	1	5
6	无源测试 (Passive Test)	2	6 ~ 7
7	装配图片 (Assembly Drawing)	2	8 ~ 9
8	材质证明 (Material Certificate)	13	10 ~ 22
9	RoHS报告 (RoHS Test Report)	**	**
10	N/A	N/A	N/A
11	-	-	-
12	-	-	-
13	-	-	-
14	-	-	-

RoHS

Compatible

REV.	DESCRIPTION	DATE
△	首次发行	2020.11.02



4	Acetate Cloth	10.0*10.0MM	Acetate Cloth	FAB0001.V01	1
3	FPCB	34.5*12.0*T0.4MM	FPCB	FPC0190.V01	1
2	Coaxial Cable	O.D.1.13 Gray	O.D.1.13	CAB0113.V02	1
1	Mini Connector	Au Plated 1代	Cu	MET0XD1.V01	1
NO	PART NAME	DESCRIPTION	Material	Part Number	Q.TY


福州市瀚宇正达电子有限公司
 World Easy Electronics Co.,Ltd.

Tel :0591-22628085
Fax:0591-22627656

PART NAME: BT Antenna L=100mm MHF			DATE: 2020-11-02	
PART NO.: WE007N.F0082.V01				
APPROVED BY	CHECKED BY	DESIGNED BY		
		周红涛	Tolerance	
			X.X ±0.50	
			X.XX±0.15	
			X° ±3°	
			UNITS: mm	
			SCALE: 1/1	
			REVISION: A	



天线规格

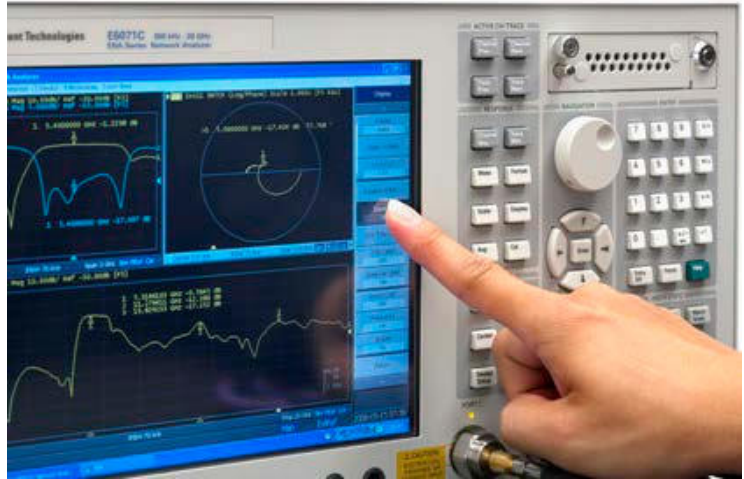
Antenna Specification

Electrical Properties	
Frequency	2400-2500MHz
Impedance	50 Ohm Nominal
V.S.W.R	1.3
Return Loss	-16dB
Radiation	Omni-directional
Gain (Peak)	0.3dB
Polarization	Linear
Connector	1代I-PEX
Physical Properties	
Antenna Material	FPC
Cable Type	O.D.1.13//L=100mm
Operating Temp.	-10 ~ +60 °C
Storage Temp.	-10 ~ +70 °C
Cable Color	Gray

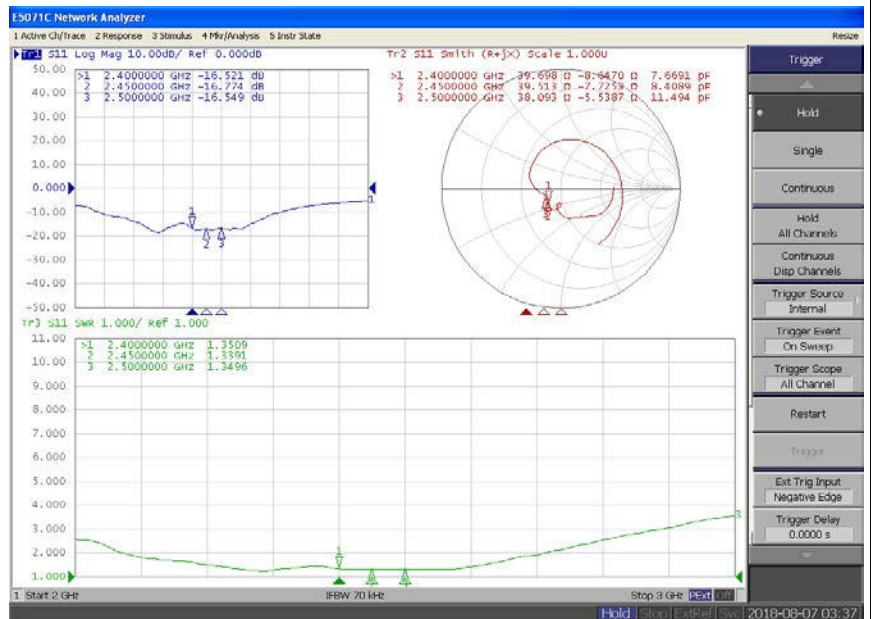


Antenna Performance Test

**Agilent
E5071C**

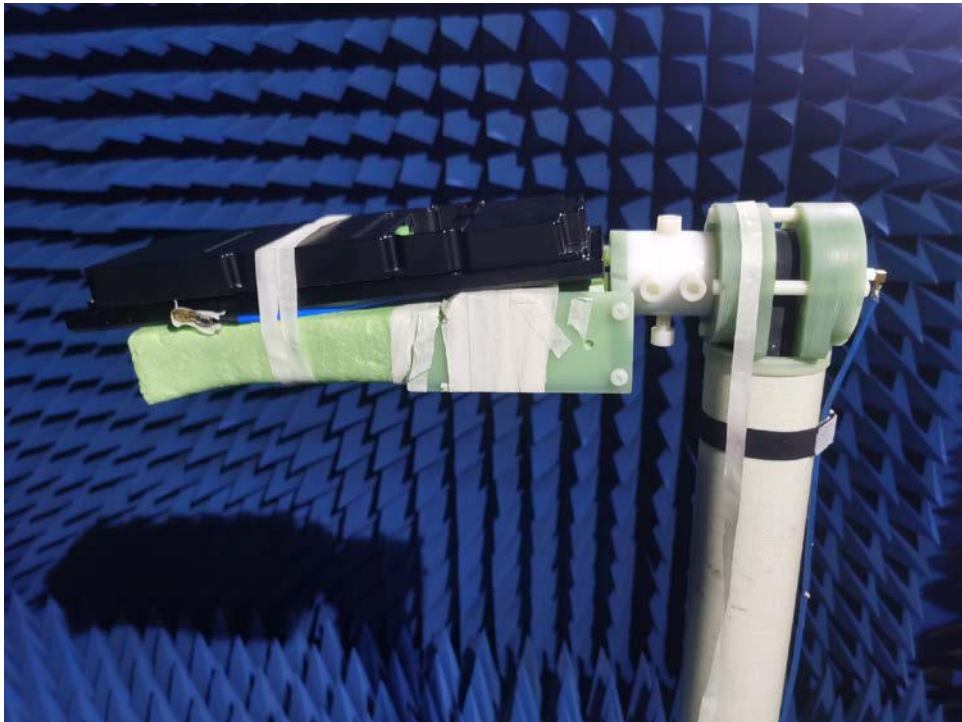
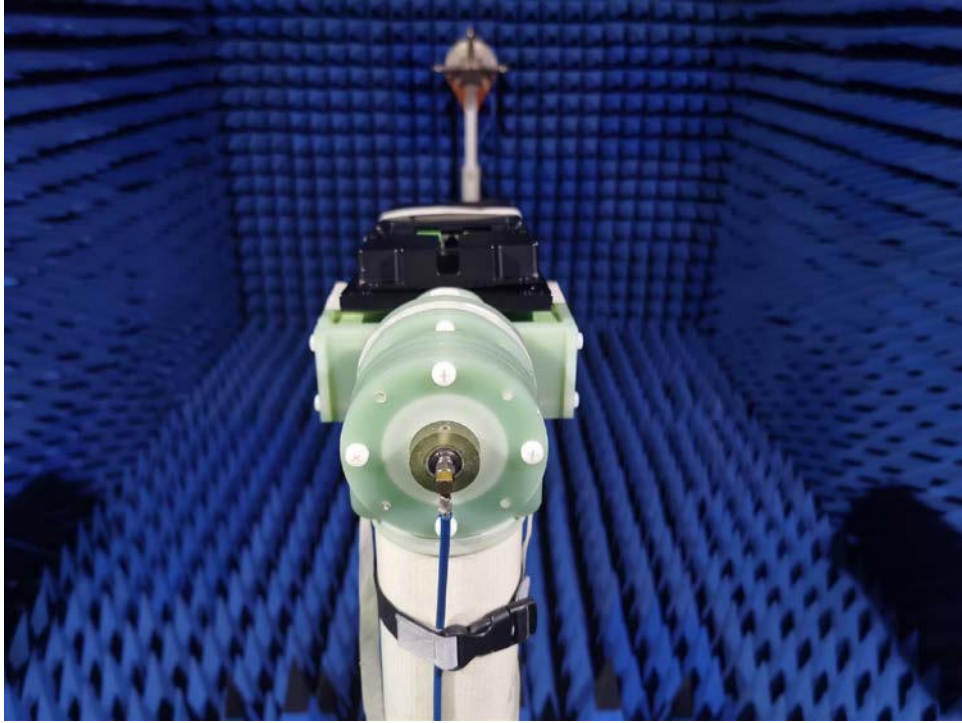


**S
Parameter
Test // BT**





Antenna Passive Test





Passive Test For BT

Freq (MHz)	Effi (%)	Effi (dB)	Gain (dBi)
2400	21.5	-6.7	-0.4
2410	16.1	-7.9	-1.9
2420	19.4	-7.1	-1.4
2430	18.9	-7.2	-1.7
2440	22.5	-6.5	-1.0
2450	22.2	-6.5	-1.2
2460	20.8	-6.8	-1.6
2470	21.4	-6.7	-1.3
2480	20.3	-6.9	-1.4
2490	28.8	-5.4	0.3
2500	28.0	-5.5	0.2

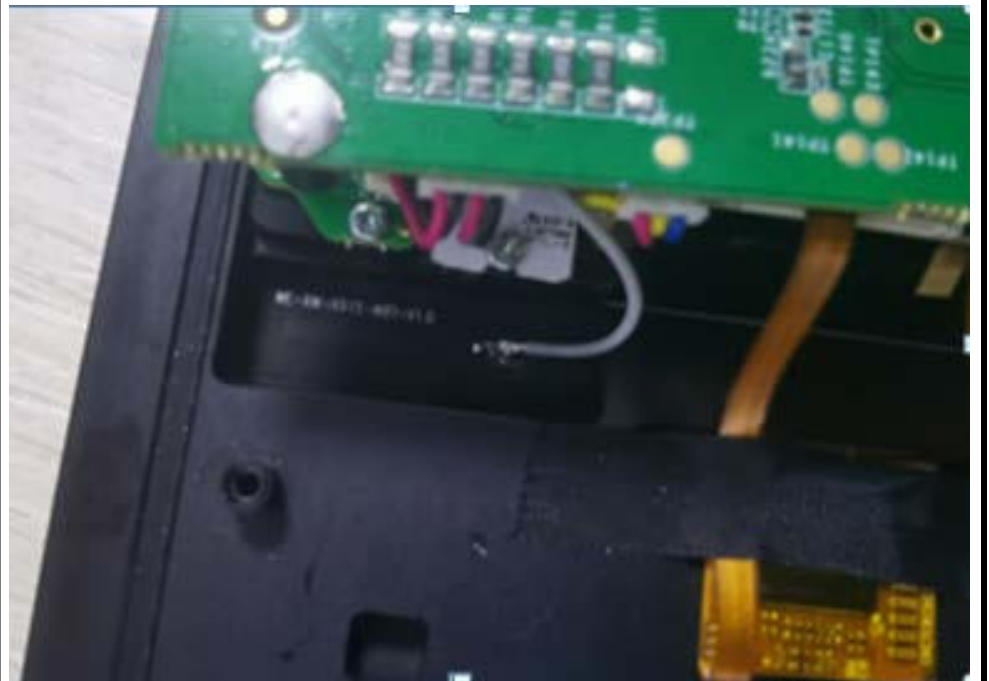


Antenna Profile

Device



*Antenna
BT*





Assembly Drawing

BT Antenna

