

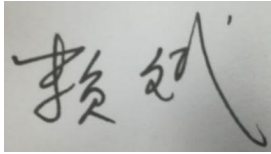


福州市瀚宇正达电子有限公司

Word Easy Electronics Co.,Ltd.

规格承认书

SPECIFICATION FOR APPROVAL



日期 2022/10/27

Date

编号 22102702

File No

版本 1.0

Revision

客户 星网

CUSTOMER: _____

客户料号 DR4 (WIFI 2)

CUSTOMER NO: _____

品名 WIFI Antenna L=160mm MHF

PART NAME: _____

供方料号 WE007N.P0030.V01

SUPPLIER NO: _____

送样日期Date: 送样数量Q “TY:

客户确认 CUSTOMER APPROVED BY

APPROVAL

CHIEF

SUPERVISOR

供方确认 SUPPLIER SIGNATURE

APPROVAL

CHECK

DESIGN

Hunter

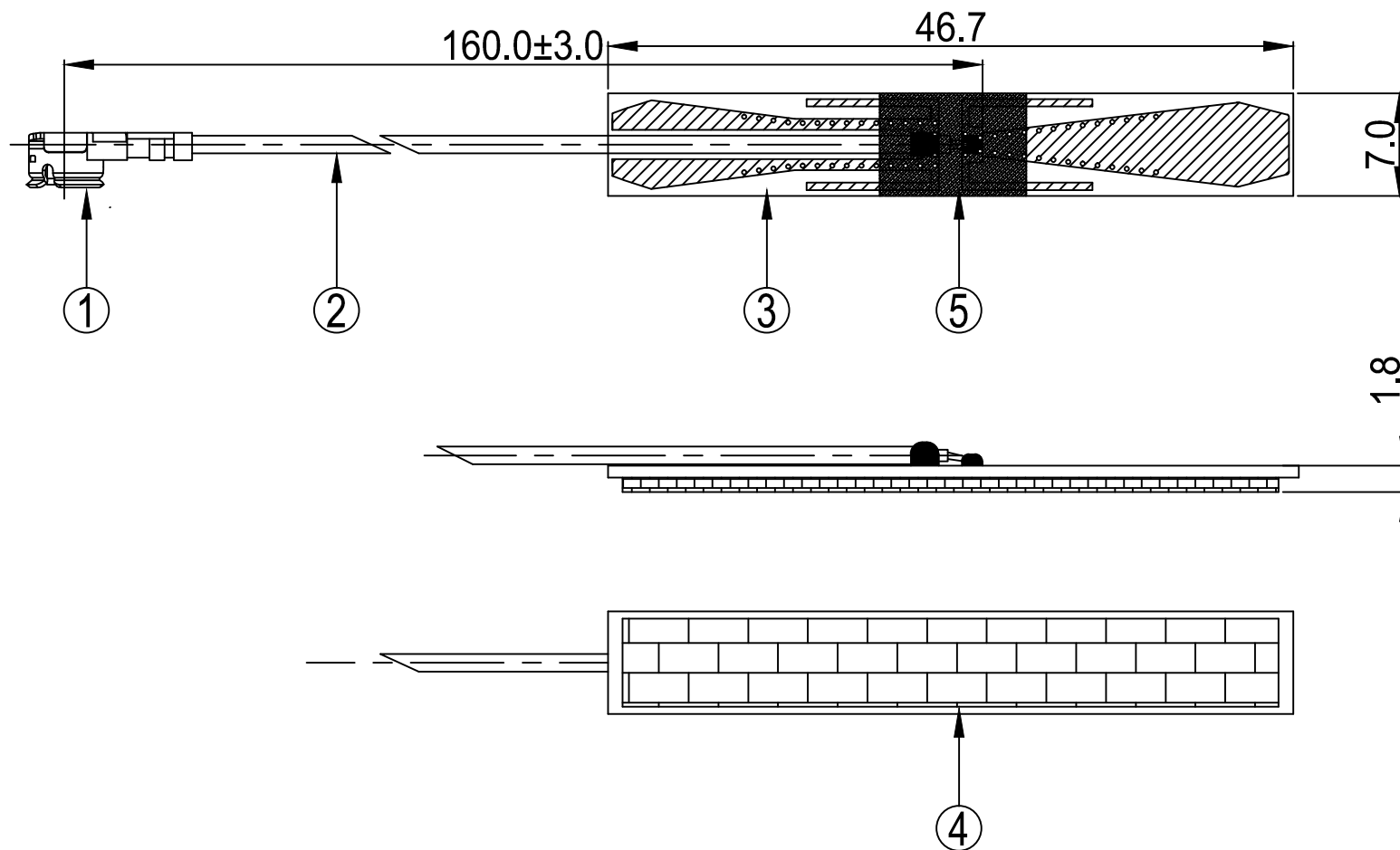
Zhou Hongtao

Fang

WE-RD-F01-A

RoHS
Compatible

REV.	DESCRIPTION	DATE
△	首次发行	2022.10.13
△		



5	Acetate Cloth	10.0*8.0MM	Acetate Cloth	FAB0002.V01	1
4	EVA	44.0*6.0*T1.0MM	3M+EVA	EVA0027.V01	1
3	PCB Black	46.7*7.0*T0.8MM	PCB	PCB0067.V01	1
2	Coaxial Cable	O.D.1.13 Gray	O.D.1.13	CAB0113.V02	1
1	Mini Connector	1代I-PEX	Cu	MET0XD1.V01	1
NO	PART NAME	DESCRIPTION	Material	Part Number	Q.TY

		福州市瀚宇正达电子有限公司 World Easy Electronics Co.,Ltd.		Tel :0591-22628085 Fax:0591-22627656	
PART NAME: WiFi Antenna L=160mm MHF					
PART NO.: WE007N.P0030.V01			DATE: 2022-10-13		
APPROVED BY	CHECKED BY	DESIGNED BY	 周红涛	Tolerance X.X ±0.50 X.XX±0.15 X° ±3°	
					UNITS: mm
					SCALE: 1/1
			REVISION: A		



天线规格

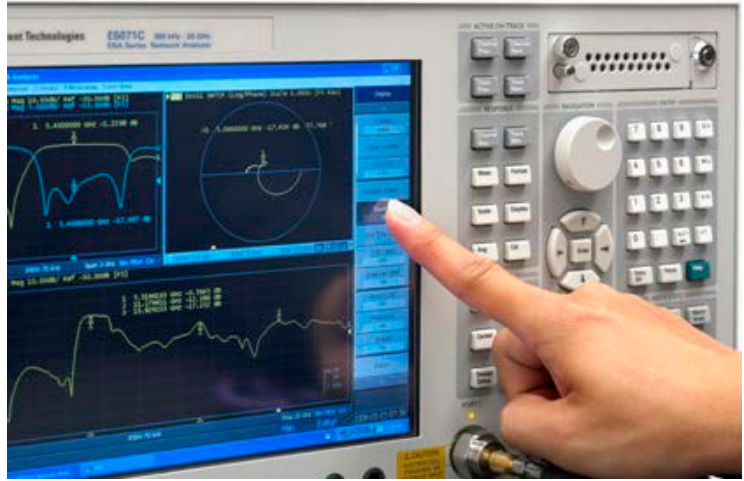
Antenna Specification

Electrical Properties	
Frequency	2400-2500MHz 5150~5850MHz
Impedance	50 Ohm Nominal
V.S.W.R	<2.1
Return Loss	<-9.0
Radiation	Omni-directional
Gain (Peak)	3.3dBi@2400-2500MHz 4.1dBi@5150~5850MHz
Polarization	Linear
Connector	1代I-PEX
Physical Properties	
Antenna Material	PCB
Cable Type	O.D.1.13//L=160mm
Operating Temp.	-10 ~ +60 °C
Storage Temp.	-10 ~ +70 °C
Cable Color	Gray

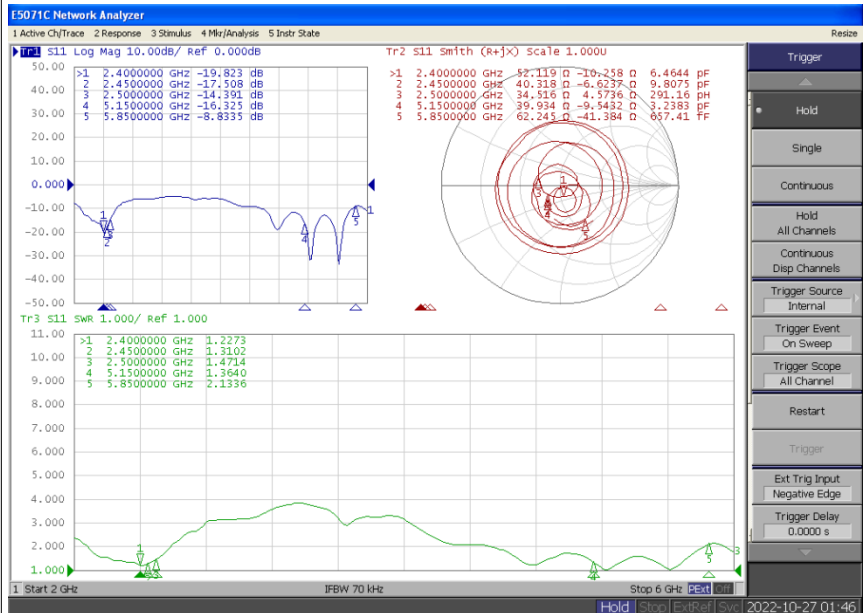


Antenna Performance Test

Agilent E5071C

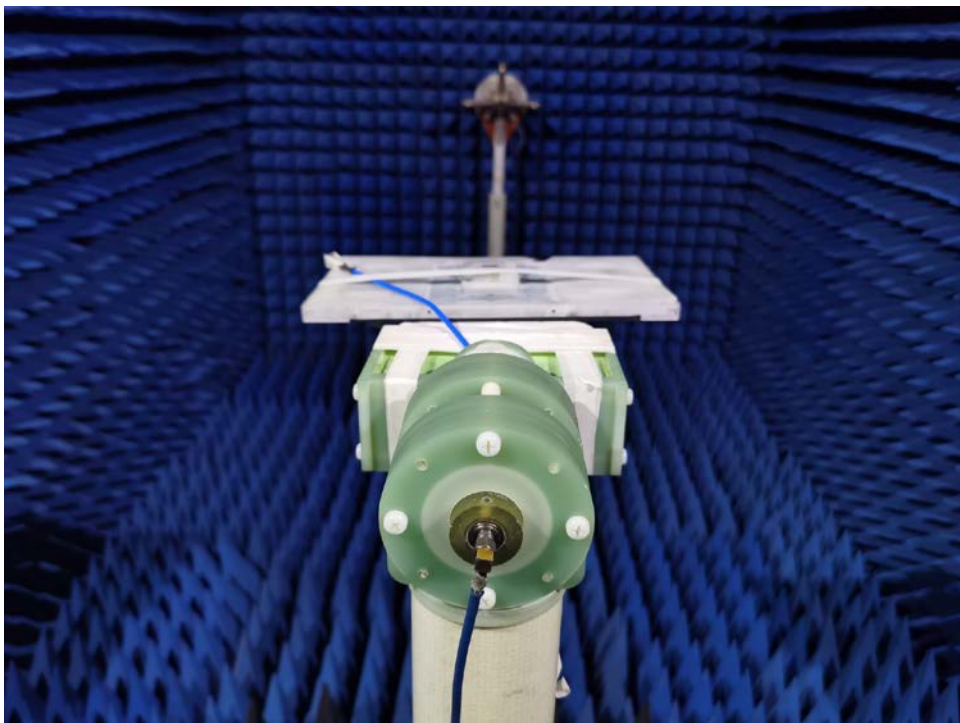
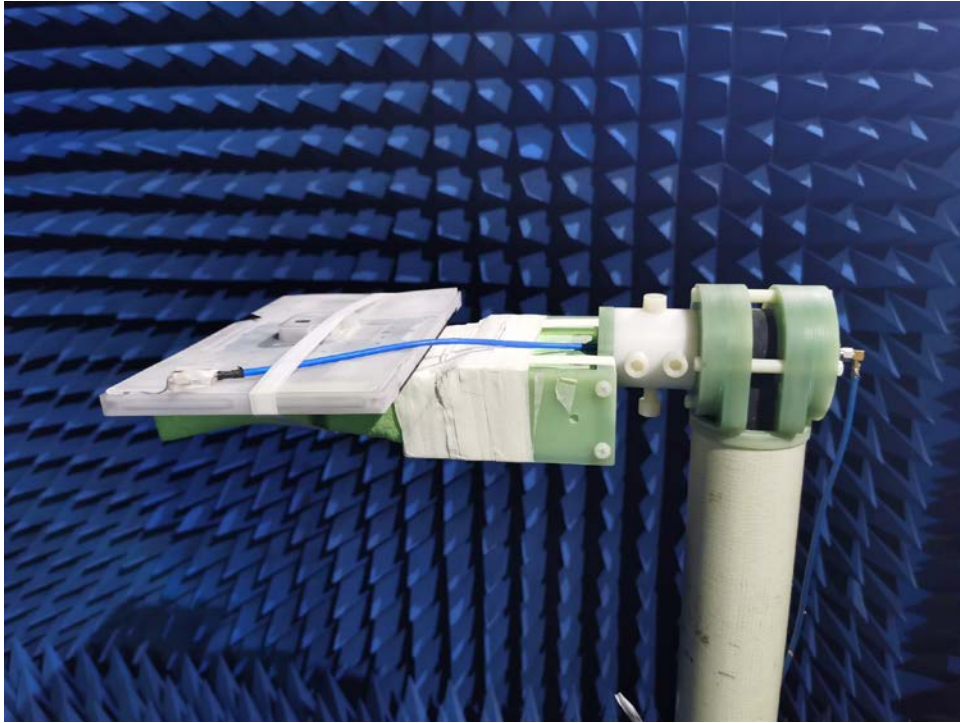


S Parameter Test // WIFI 2





Antenna Passive Test





Passive Test For WIFI 2 (2.4G)

Freq (MHz)	Effi (%)	Effi (dB)	Gain (dBi)
2400	54.5	-2.6	2.5
2410	49.0	-3.1	2.5
2420	52.0	-2.8	3.0
2430	41.2	-3.9	2.2
2440	51.7	-2.9	3.3
2450	43.3	-3.6	2.6
2460	50.4	-3.0	3.3
2470	35.0	-4.6	1.7
2480	38.4	-4.2	2.1
2490	33.8	-4.7	1.6
2500	36.7	-4.4	2.0

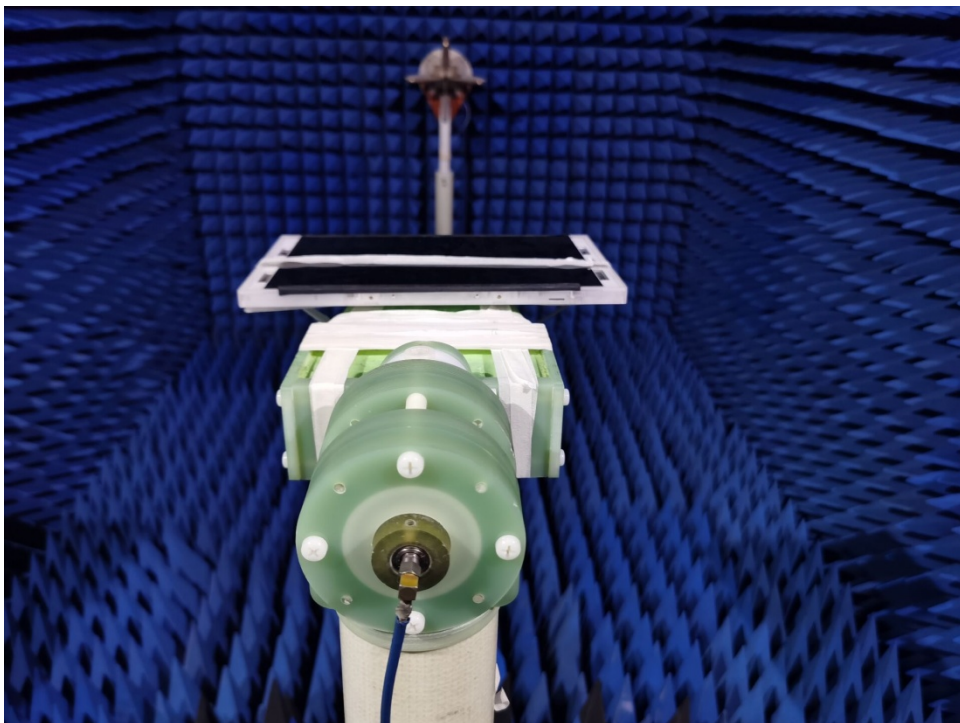
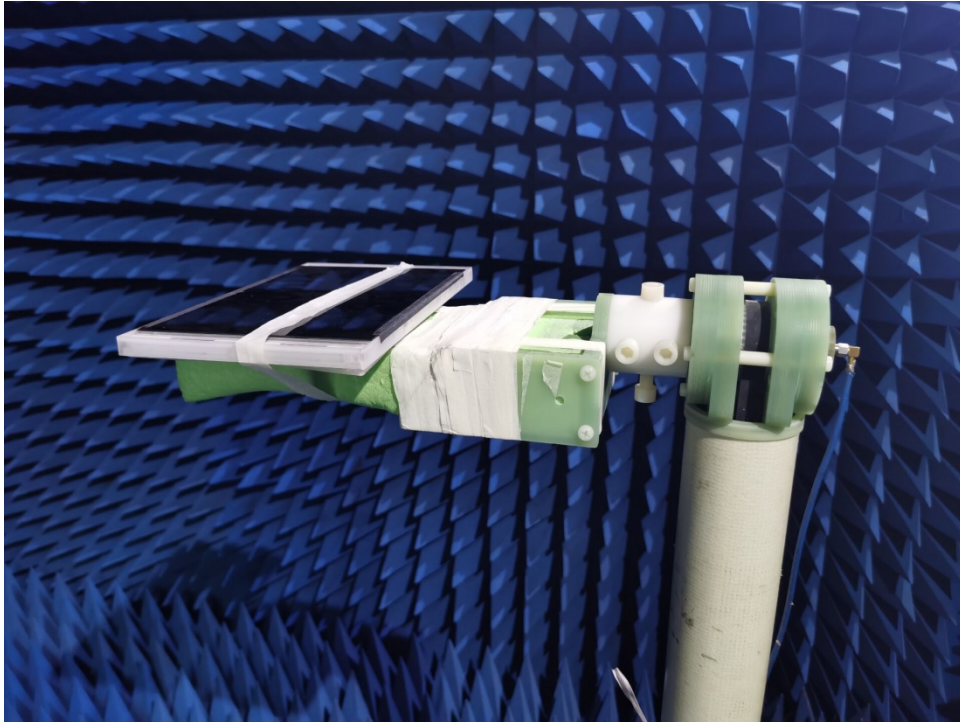


Passive Test For WIFI 2(5.8G)

Freq (MHz)	Effi (%)	Effi (dB)	Gain (dBi)
5150	62.1	-2.1	4.1
5200	58.0	-2.4	4.0
5250	53.4	-2.7	3.8
5300	51.3	-2.9	3.7
5350	51.4	-2.9	3.8
5400	50.8	-3.0	3.9
5450	44.2	-3.5	3.5
5500	43.2	-3.7	3.5
5550	41.1	-3.9	3.4
5600	43.3	-3.6	3.3
5650	43.6	-3.6	3.2
5700	50.2	-3.0	3.7
5750	52.1	-2.8	3.9
5800	50.3	-3.0	3.4
5850	49.1	-3.1	3.5



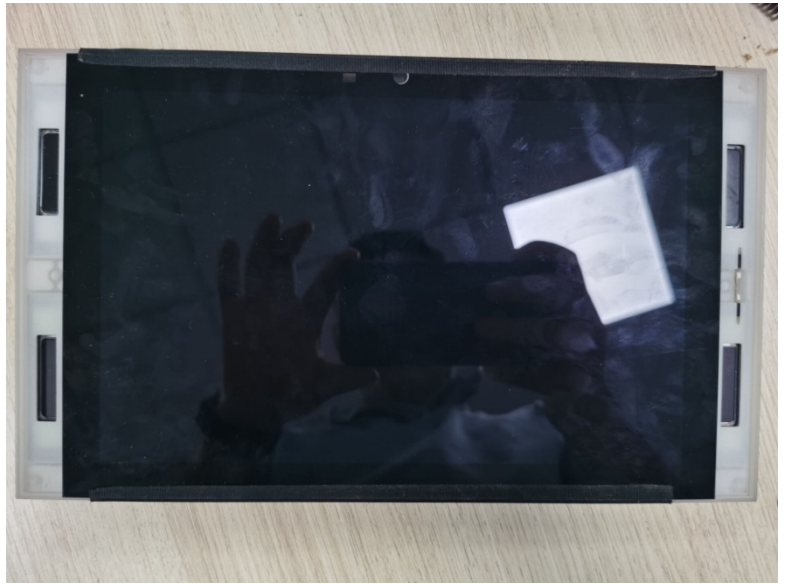
Antenna Active Test





Antenna Profile

Device

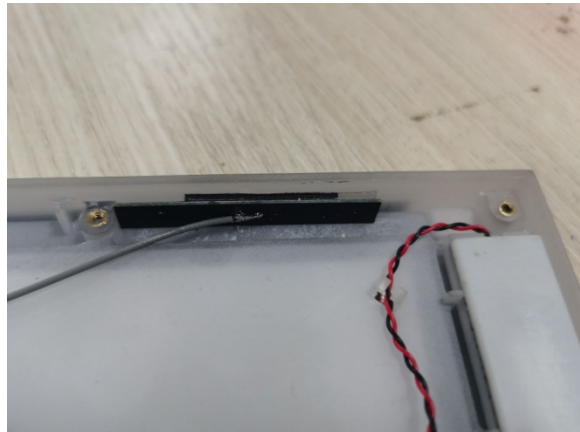


WIFI1



Antenna

WIFI2





Assembly Drawing

WIFI 1 Antenna

WIFI 2 Antenna

