



# 福州市瀚宇正达电子有限公司

Word Easy Electronics Co.,Ltd.

## 规格承认书

### SPECIFICATION FOR APPROVAL

日期 2024/03/12  
Date

编号 24031201  
File No

版本 1.0  
Revision

客户

CUSTOMER: \_\_\_\_\_

客户料号

S563

CUSTOMER NO: \_\_\_\_\_

品名

WIFI Antenna L=72mm MHF

PART NAME: \_\_\_\_\_

供方料号

WE007N.F0136.V01

SUPPLIER NO: \_\_\_\_\_

送样日期Date:

#### 客户确认CUSTOMER APPROVED BY

APPROVAL

CHIEF

SUPERVISOR

#### 供方确认 SUPPLIER SIGNATURE

APPROVAL

CHECK

DESIGN

Hunter

Luo

Liu



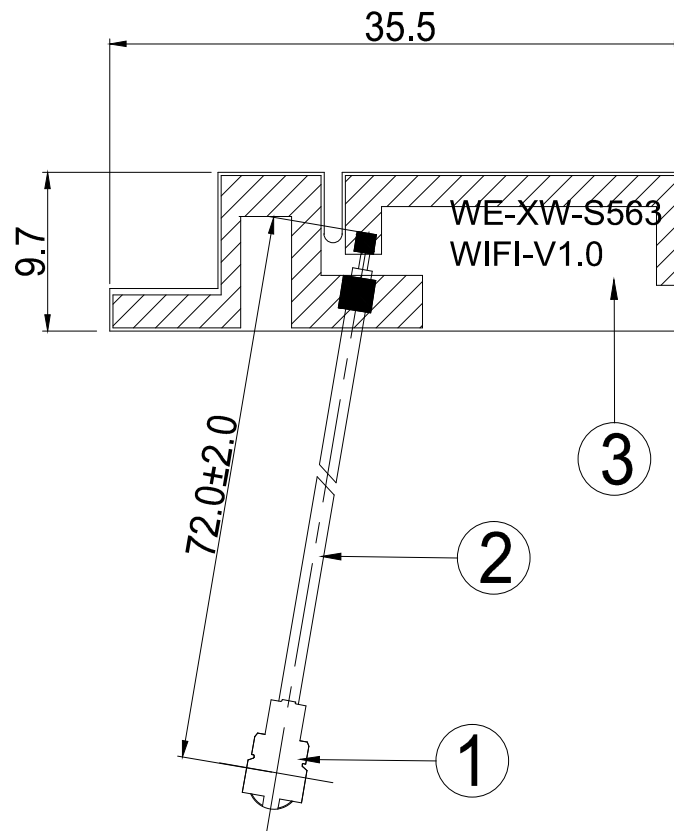
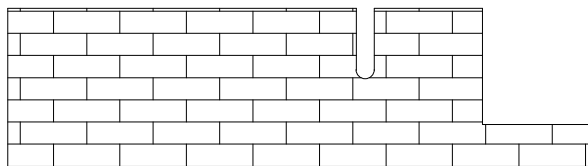
WE-RD-F01-A



NO.	内容 (Contents)	页数 (Number of Page)	页码 (Page Code)
1	承认书封面 (Spec Cover)	1	1
2	承认书项目表 (Spec Item)	1	2
3	工程成品图 (Drawing)	1	3
4	天线规格 (Antenna Specification)	1	4
5	S参数测试 (S Parameter)	1	5
6	无源测试 (Passive Test)	2	6 ~ 7
7	天线辐射场型 (Antenna Radiation Pattern)	3	8 ~ 10
8	天线装配图 (Antenna Profile)	2	11 ~ 12
9	RoHS报告 (RoHS Test Report)	**	**
10	N/A	N/A	N/A
11	-	-	-
12	-	-	-

# RoHS

Compatible



福州市瀚宇正达电子有限公司

World Easy Electronics Co.,Ltd.

Tel :0591-22628085

Fax:0591-22627656

PART NAME: WIFI Antenna L=72mm MHF

PART NO.: WE007N.F0136.V01

DATE: 2023-06-06

APPROVED BY

CHECKED BY

DESIGNED BY



Tolerance

UNITS: mm

SCALE: 1/1

REVISION: A

X.X ±0.50

X.XX±0.15

X° ±3°

3	FPCB	35.5*9.7*T0.4MM	FPCB	FPC0326.V01	1
2	Coaxial Cable	O.D.1.13 Gray	O.D.1.13	CAB0113.V02	1
1	Mini Connector	Au Plated 1	Cu	MET0XD1.V01	1
NO	PART NAME	DESCRIPTION	Material	Part Number	Q.TY



# 天线规格

## Antenna Specification

### Electrical Properties

Frequency	2400-2500MHz
Impedance	50 Ohm Nominal
V.S.W.R	<1.5
Return Loss	<-15dB
Radiation	Omni-directional
Gain (Peak)	3.3dBi
Polarization	Linear
Connector	1I-PEX

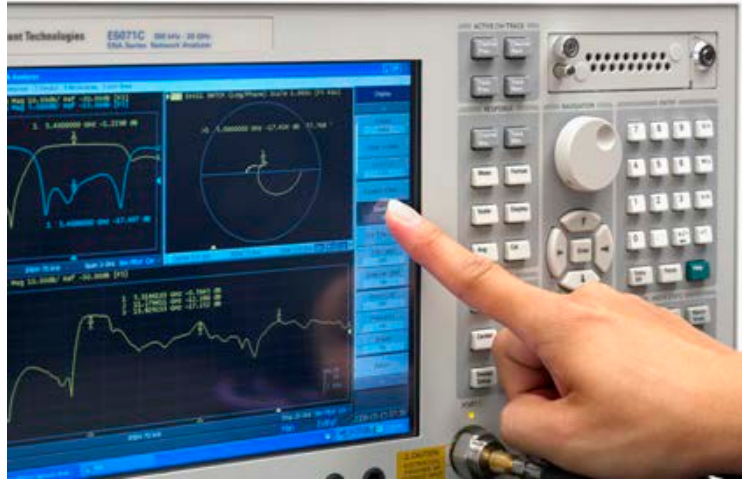
### Physical Properties

Antenna Material	FPC
Cable Type	O.D.1.13//L=72mm
Operating Temp.	-10 ~ +60 °C
Storage Temp.	-10 ~ +70 °C
Cable Color	Gray

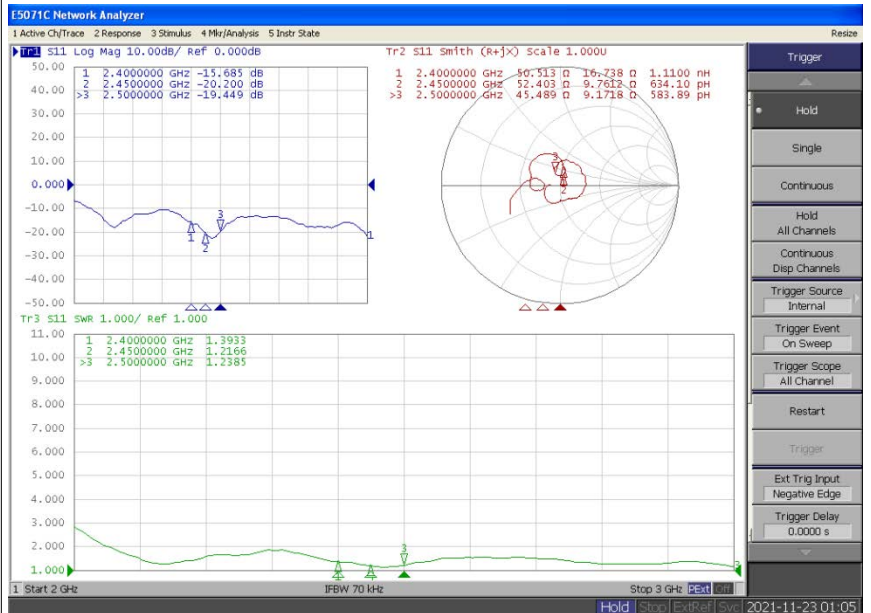


# Antenna Performance Test

**Agilent  
E5071C**

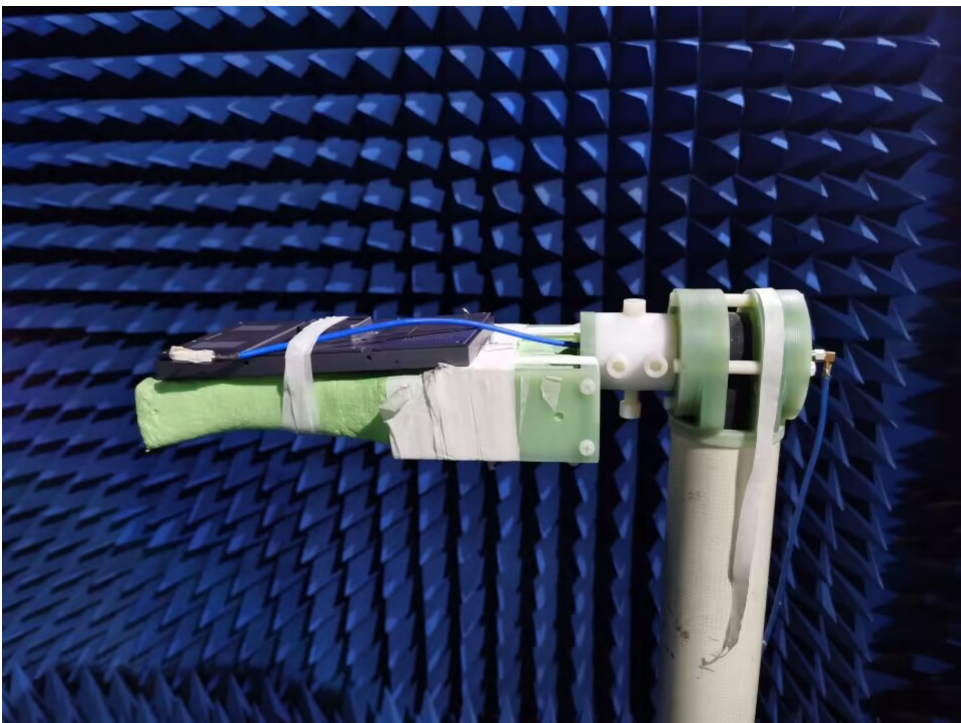
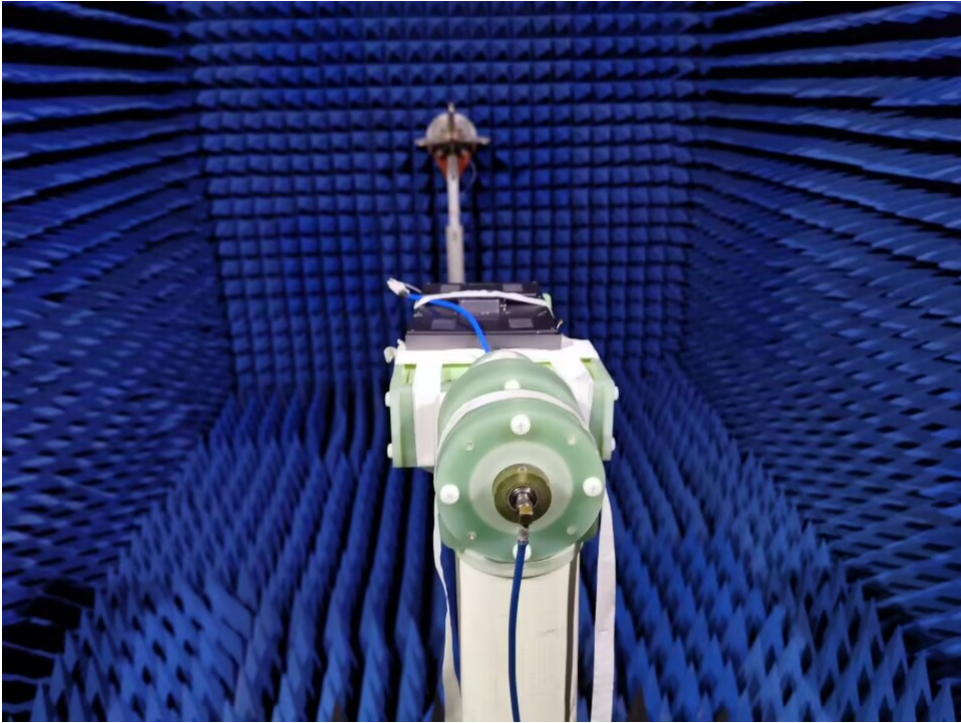


**S  
Parameter  
Test //  
WIFI**





## *Antenna Passive Test*



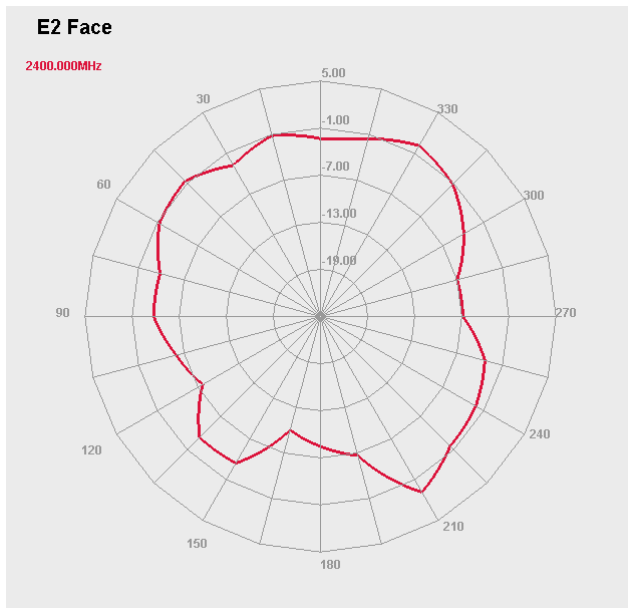
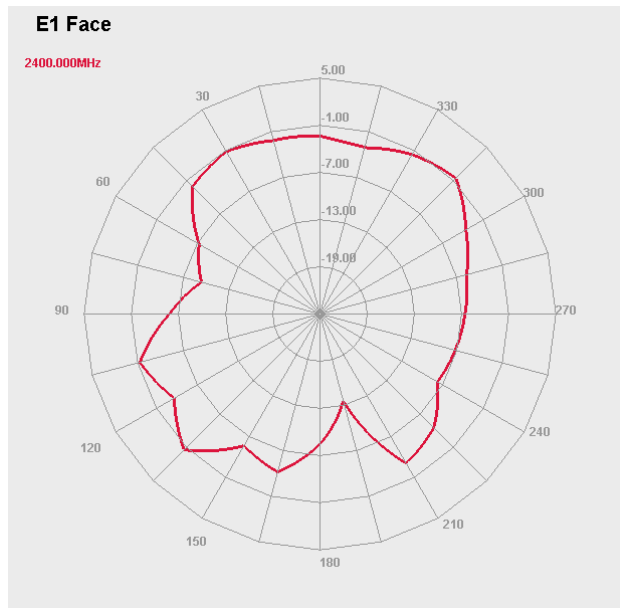
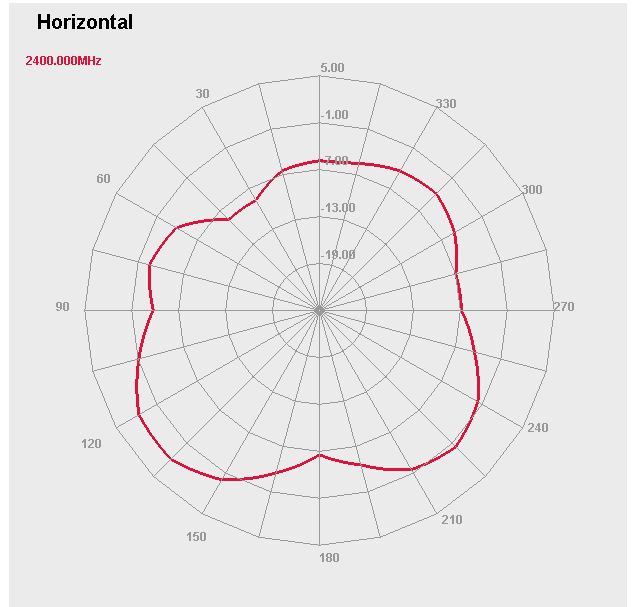
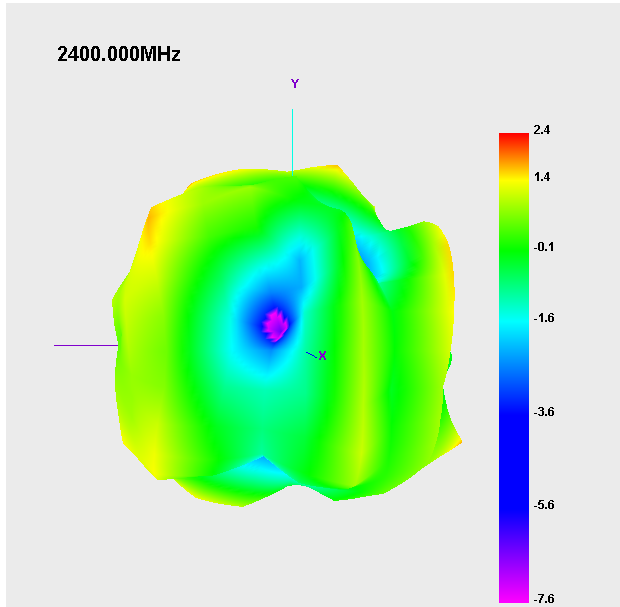


### Passive Test For WIIF

Freq (MHz)	Effi (%)	Effi (dB)	Gain (dBi)
2400	59.1	-2.3	2.4
2410	55.1	-2.6	2.3
2420	54.6	-2.6	2.5
2430	51.2	-2.9	2.4
2440	53.2	-2.7	2.7
2450	54.0	-2.7	2.7
2460	56.8	-2.5	2.9
2470	55.2	-2.6	2.8
2480	58.4	-2.3	3.1
2490	59.7	-2.2	3.3
2500	60.5	-2.2	3.3



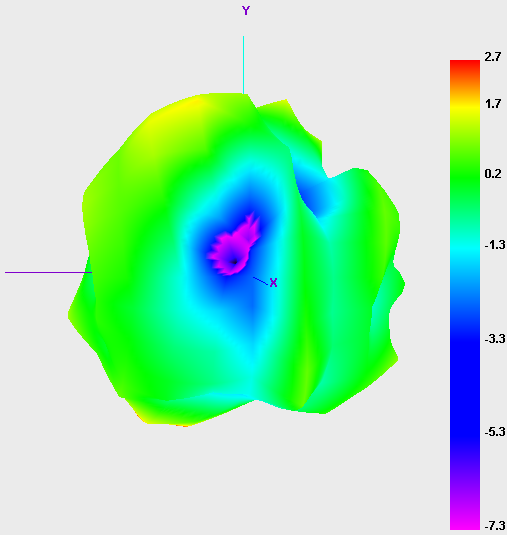
# Antenna Radiation Pattern





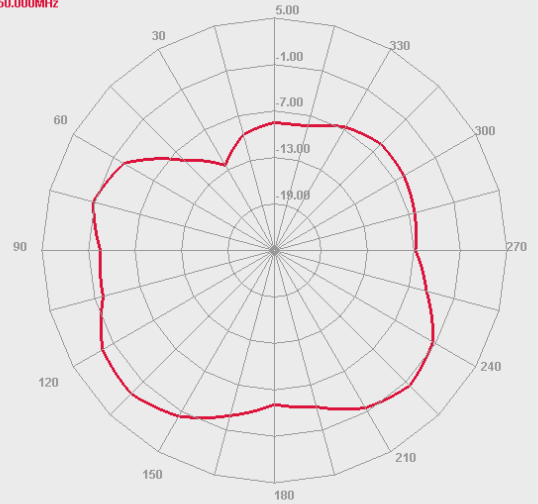


2450.000MHz



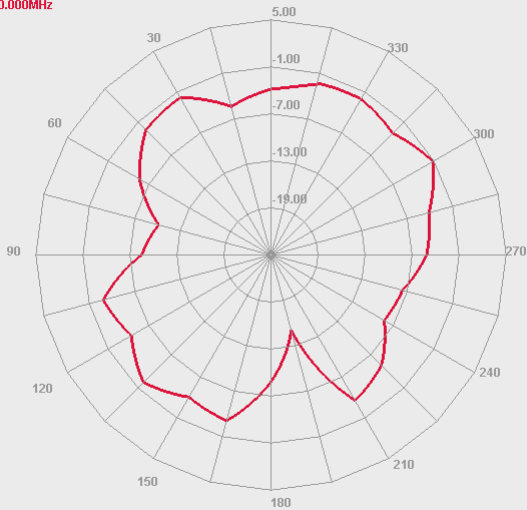
Horizontal

2450.000MHz



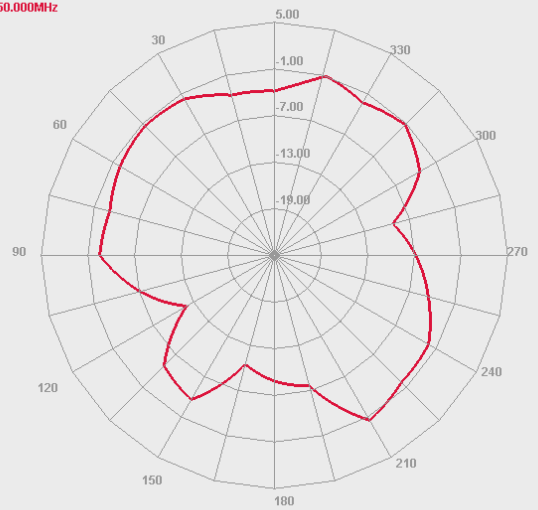
E1 Face

2450.000MHz



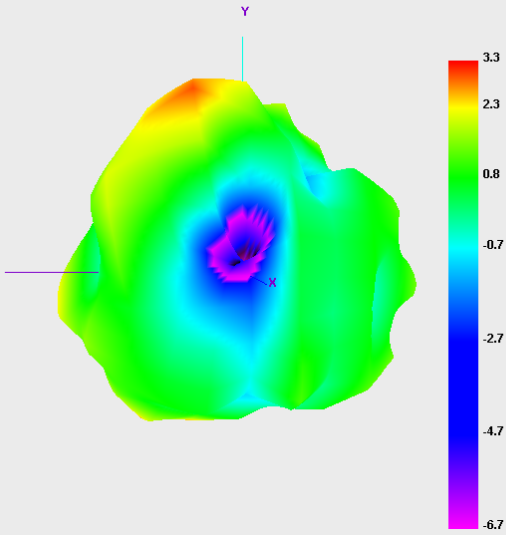
E2 Face

2450.000MHz





2500.000MHz



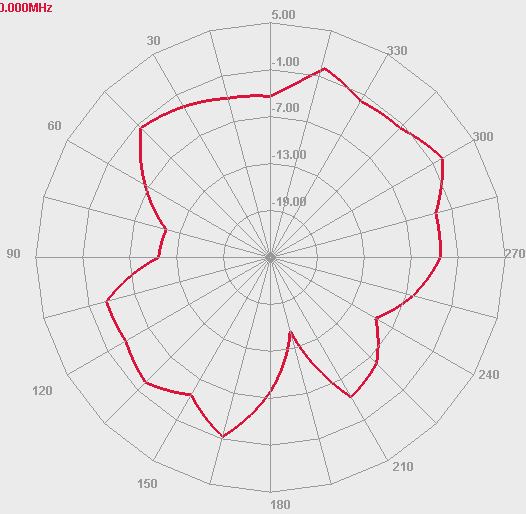
Horizontal

2500.000MHz



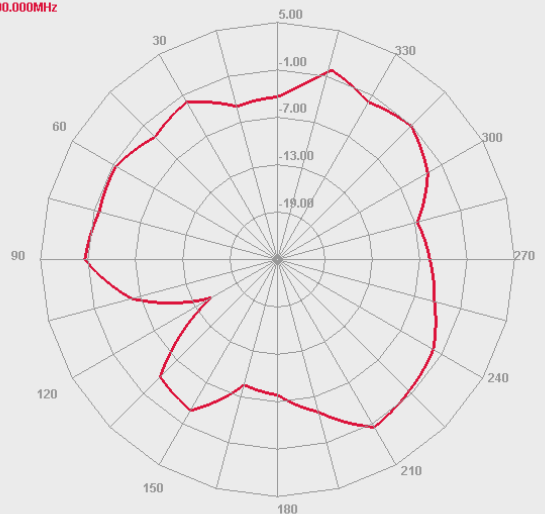
E1 Face

2500.000MHz



E2 Face

2500.000MHz





# *Antenna Profile*

*Device*



*Antenna  
WIFI*





# *Assembly Drawing*

**WIFI Antenna**

