



福州市瀚宇正达电子有限公司

Word Easy Electronics Co.,Ltd.

规格承认书

SPECIFICATION FOR APPROVAL

日期 2024/02/21

Date

编号 24022101

File No

版本 1.0

Revision

客户

CUSTOMER:

客户料号

S562

CUSTOMER NO:

品名

WIFI Antenna L=85mm MHF

PART NAME:

供方料号

WE007N.F0132.V01

SUPPLIER NO:

送样日期Date:

Q “TY:

客户确认CUSTOMER APPROVED BY

APPROVAL

CHIEF

SUPERVISOR

供方确认 SUPPLIER SIGNATURE

APPROVAL

CHECK

DESIGN

Hunter

Luo

Liu



WE-RD-F01-A



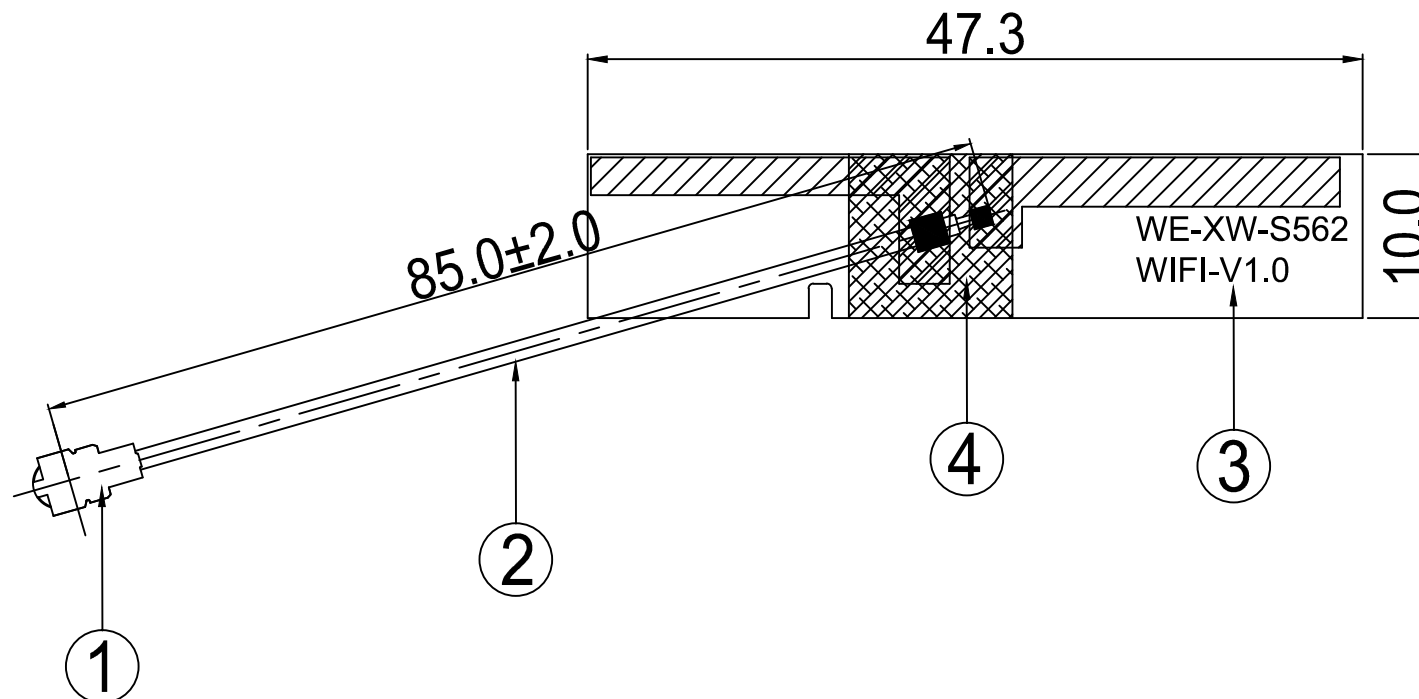
承认书项目表

NO.	内容 (Contents)	页数 (Number of Page)	页码 (Page Code)
1	承认书封面 (Spec Cover)	1	1
2	承认书项目表 (Spec Item)	1	2
3	工程成品图 (Drawing)	1	3
4	天线规格 (Antenna Specification)	1	4
5	S参数测试 (S Parameter)	1	5
6	无源测试 (Passive Test)	2	6 ~ 7
7	天线辐射场型 (Antenna Radiation Pattern)	3	8 ~ 10
8	天线装配图 (Antenna Profile)	2	11 ~ 12
9	RoHS报告 (RoHS Test Report)	**	**
10	N/A	N/A	N/A
11	-	-	-
12	-	-	-

RoHS

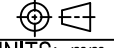
Compatible

REV.	DESCRIPTION	DATE
△	首次发行	2023.03.17



NO	PART NAME	DESCRIPTION	Material	Part Number	Q.TY
4	Acetate Cloth	10.0*10.0MM	Acetate Cloth	FAB0001.V01	1
3	FPCB	47.3*10.0MM	FPCB	FPC0322.V01	1
2	Coaxial Cable	O.D.1.13 Gray	O.D.1.13	CAB0113.V01	1
1	Mini Connector	Au Plated 1代	Cu	MET0XD1.V01	1

 福州市瀚宇正达电子有限公司
World Easy Electronics Co.,Ltd. Tel:0591-22628085 Fax:0591-22627656

PART NAME: WIIF Antenna L=85mm MHF			DATE: 2023-03-17		
PART NO.: WE007N.F0132.V01					
APPROVED BY	CHECKED BY	DESIGNED BY		Tolerance	
				UNITS: mm	X.X ±0.50
				SCALE: 1/1	X.XX±0.15
REVISION: A				X° ±3°	



天线规格

Antenna Specification

Electrical Properties

Frequency	2400-2500MHz
Impedance	50 Ohm Nominal
V.S.W.R	<1.5
Return Loss	<-16dB
Radiation	Omni-directional
Gain (Peak)	2.5dBi
Polarization	Linear
Connector	1I-PEX

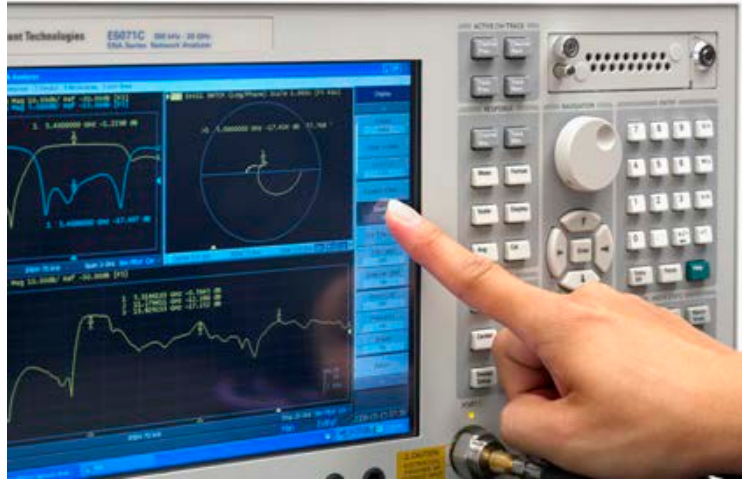
Physical Properties

Antenna Material	FPC
Cable Type	O.D.1.13//L=85mm
Operating Temp.	-10 ~ +60 °C
Storage Temp.	-10 ~ +70 °C
Cable Color	Gray

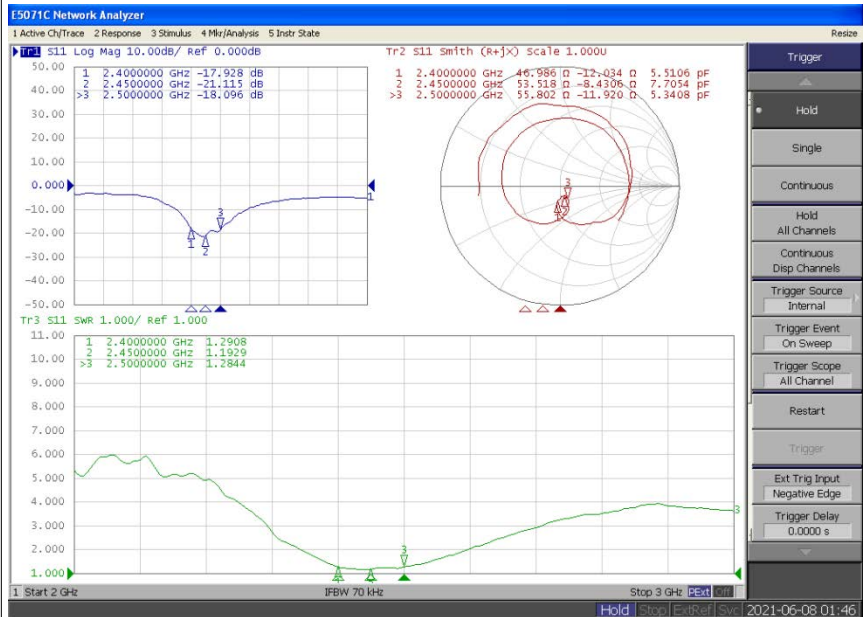


Antenna Performance Test

**Agilent
E5071C**

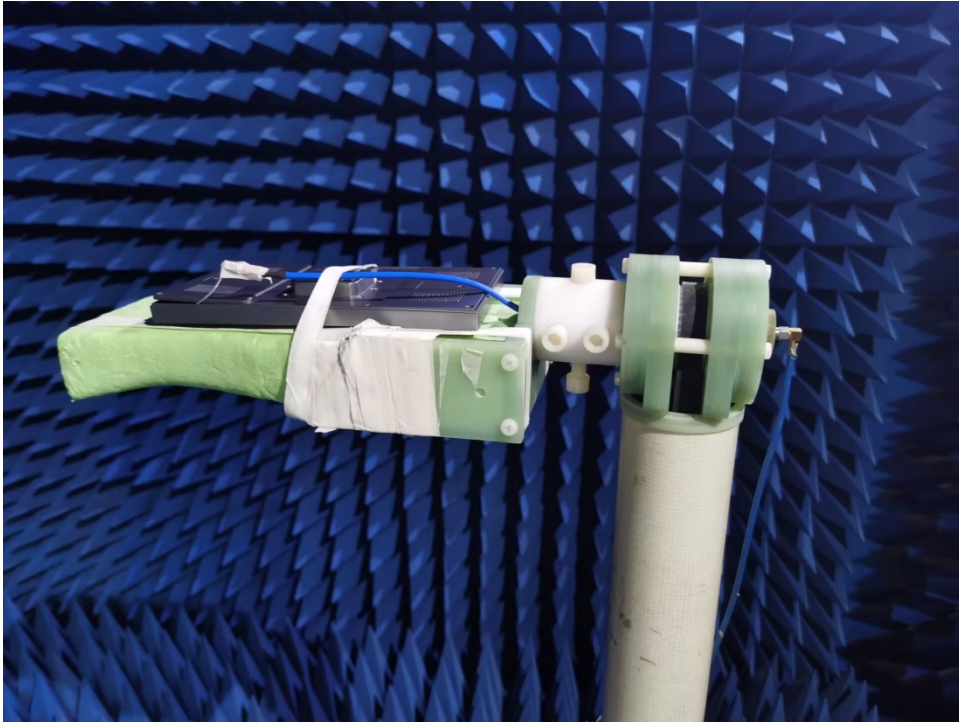


**S
Parameter
Test //
WIFI**





Antenna Passive Test



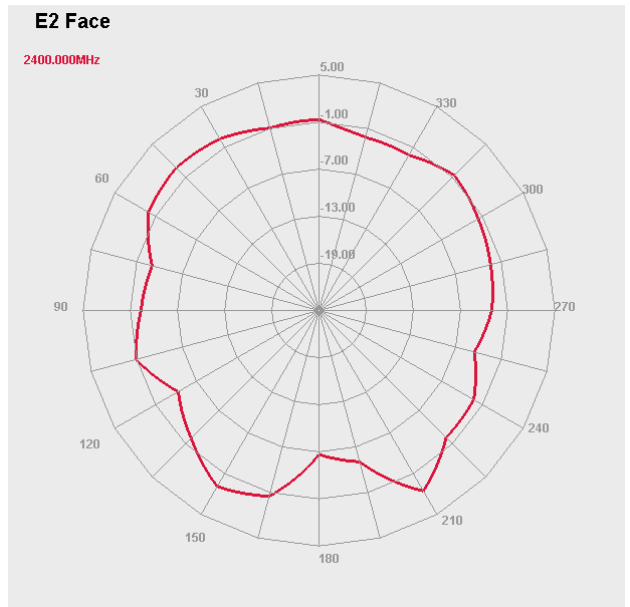
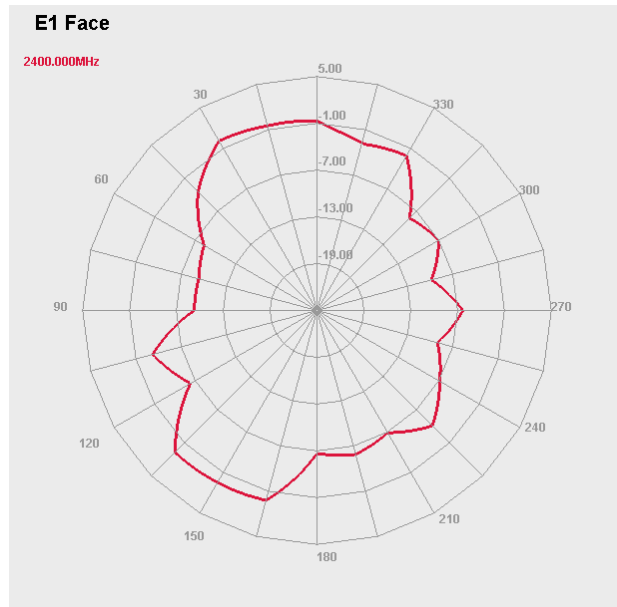
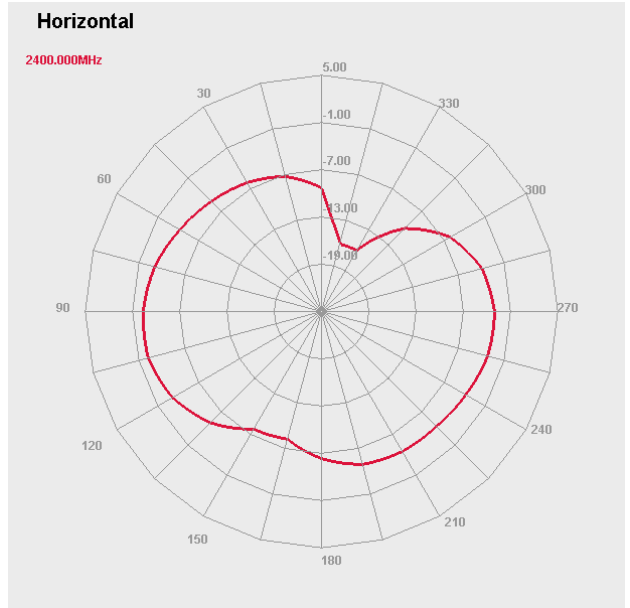
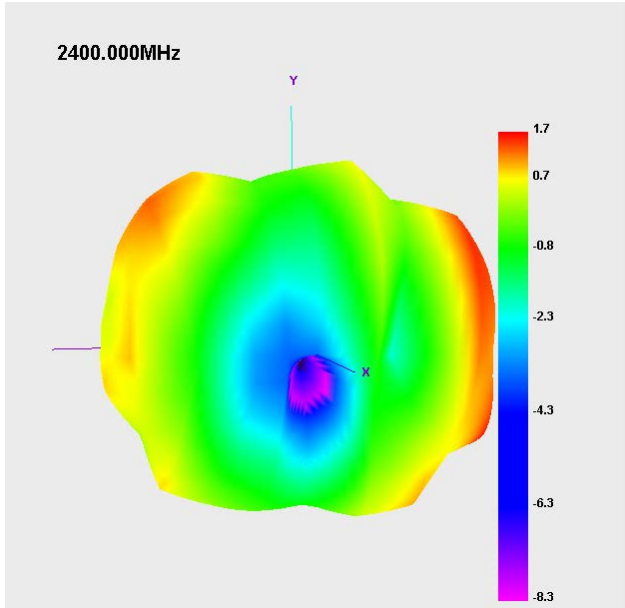


Passive Test For WIFI

Freq (MHz)	Effi (%)	Effi (dB)	Gain (dBi)
2400	53.6	-2.7	1.8
2410	56.1	-2.5	1.7
2420	58.5	-2.3	1.7
2430	58.4	-2.3	1.6
2440	59.2	-2.3	1.8
2450	57.1	-2.4	1.7
2460	61.3	-2.1	2.1
2470	59.1	-2.3	2.1
2480	63.8	-2.0	2.5
2490	62.6	-2.0	2.5
2500	60.1	-2.2	2.4

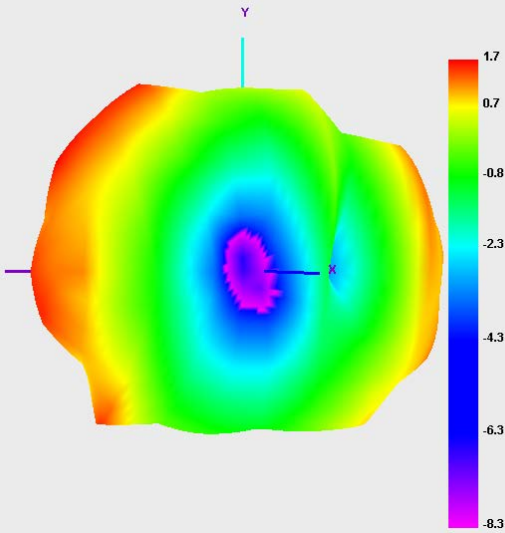


Antenna Radiation Pattern



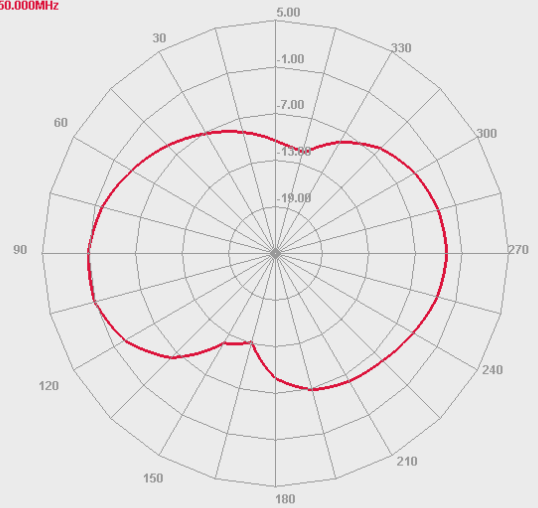


2450.000MHz



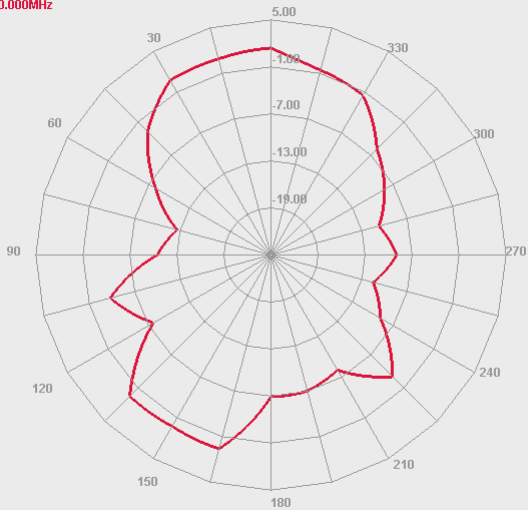
Horizontal

2450.000MHz



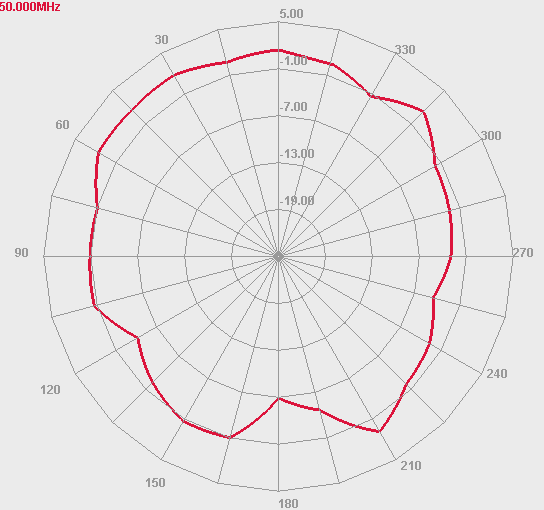
E1 Face

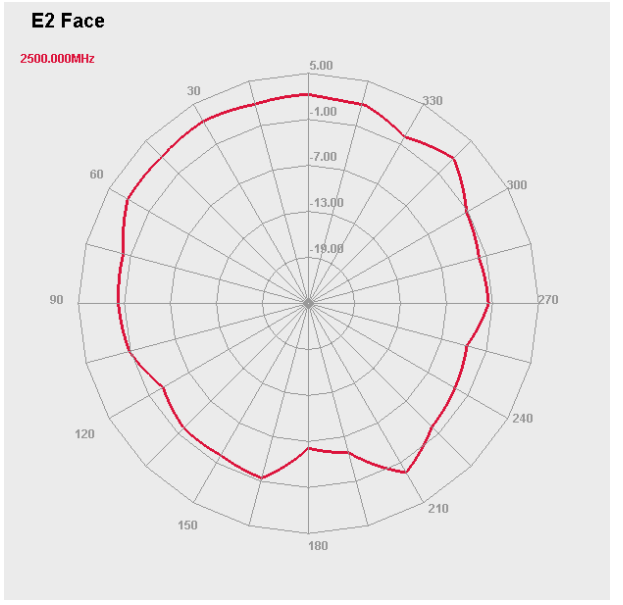
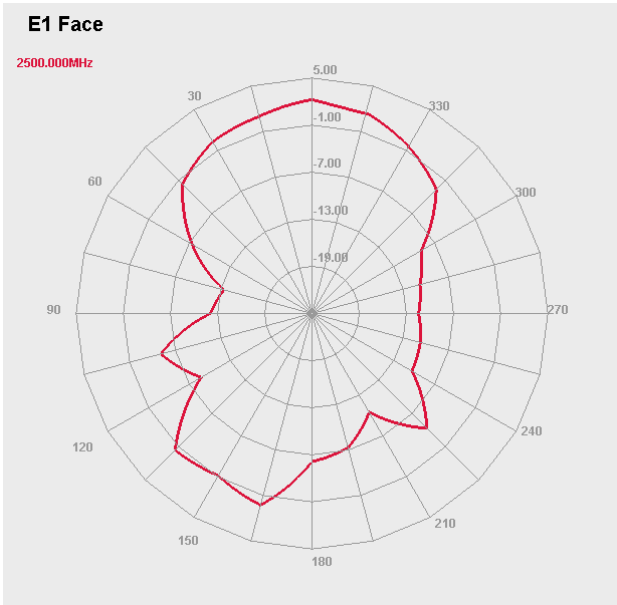
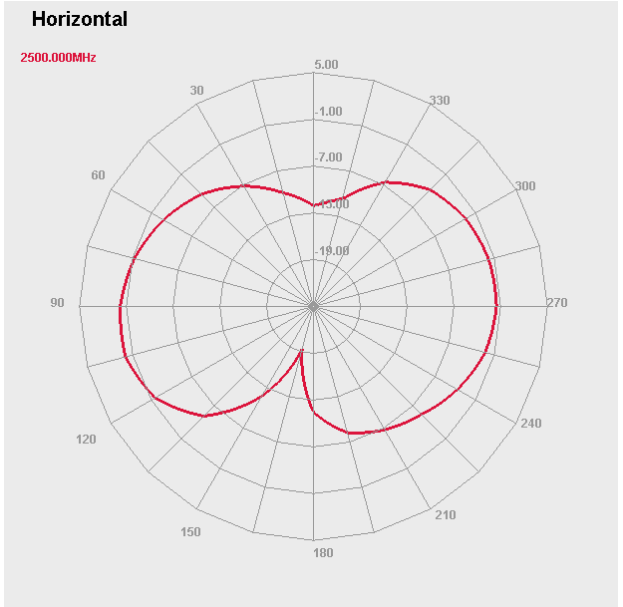
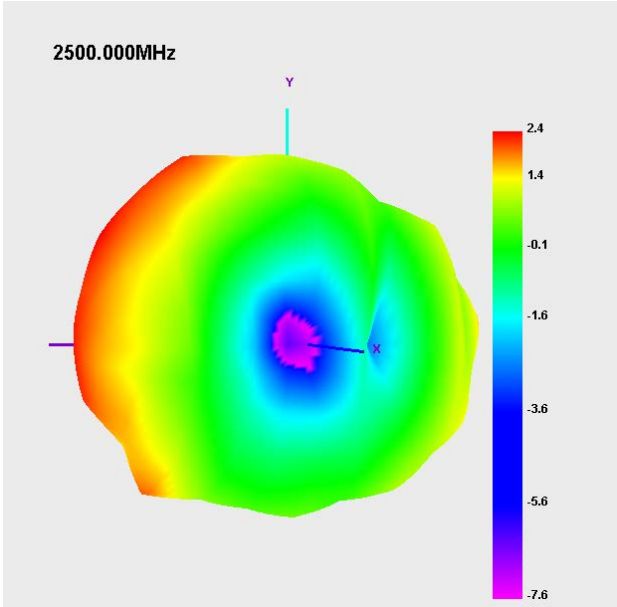
2450.000MHz



E2 Face

2450.000MHz

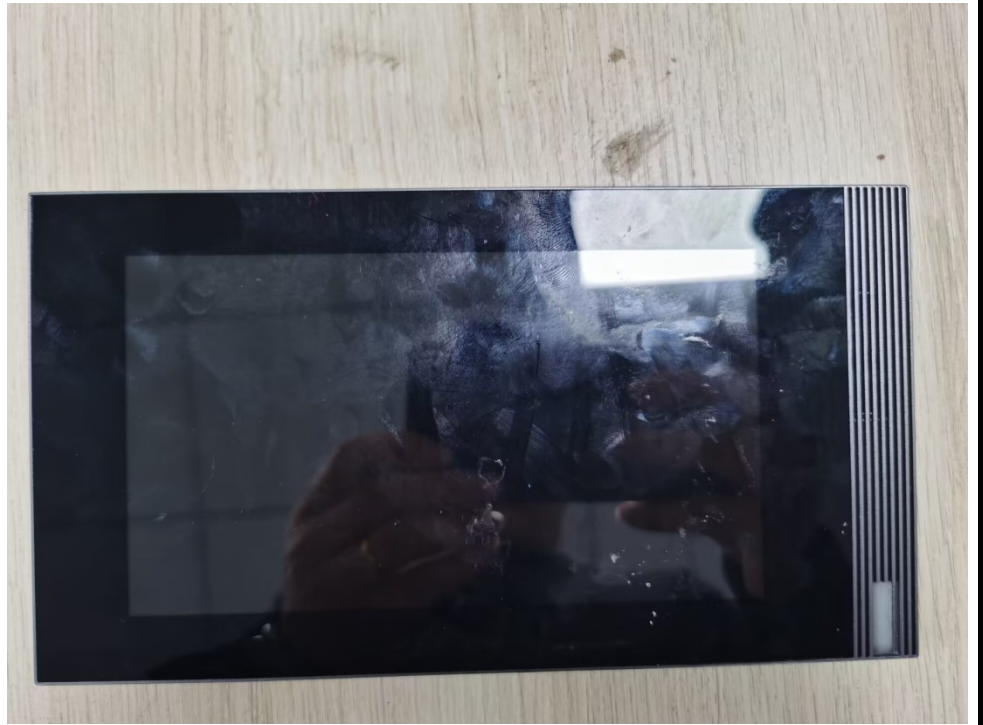






Antenna Profile

Device

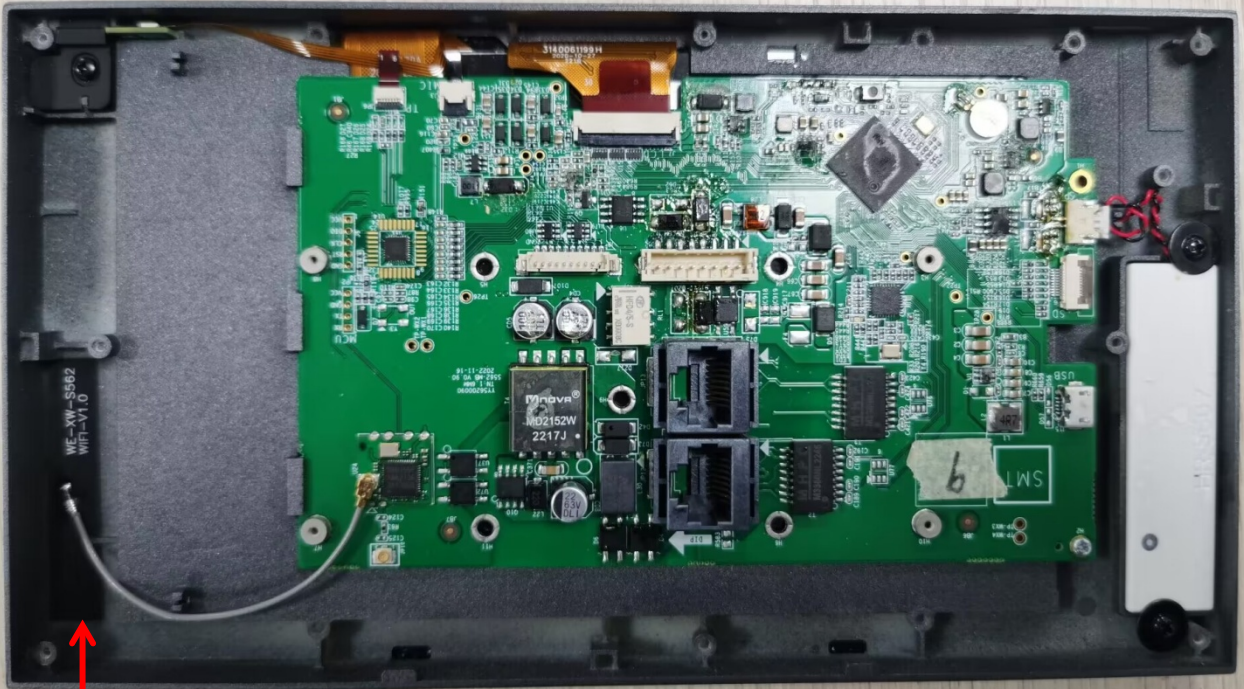


*Antenna
WIFI*





Assembly Drawing



WiFi Antenna