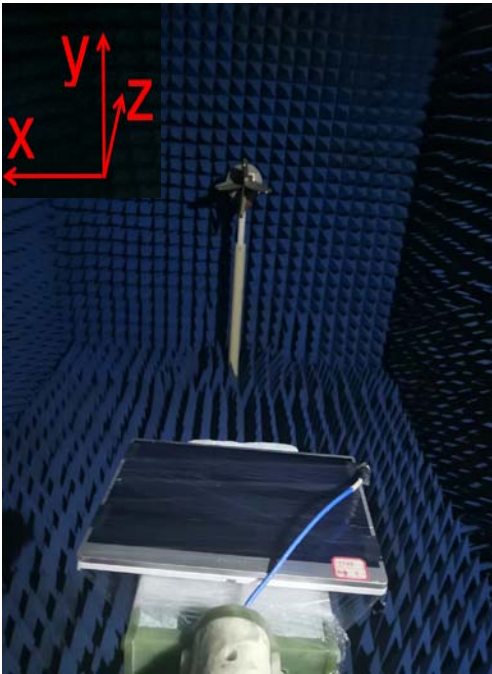


Record of test results

Sample name	IT88A	Test conditions	22.2°C/ 43 %
Test basis	national standard	Number of samples	1 pcs
Test items	passive	Testing equipment	E5071C
Sample sender	Akuvox	HW Version	V1.00

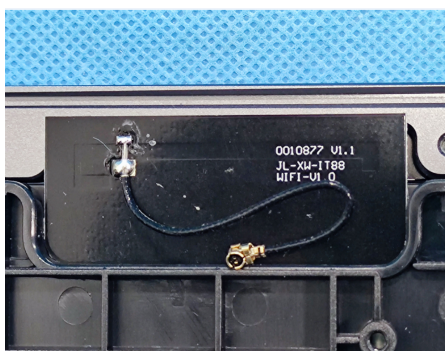
Prototype information		<p>H: xoy</p> <p>E1: xoz</p> <p>E2: zoy</p>
-----------------------	---	---

Remarks

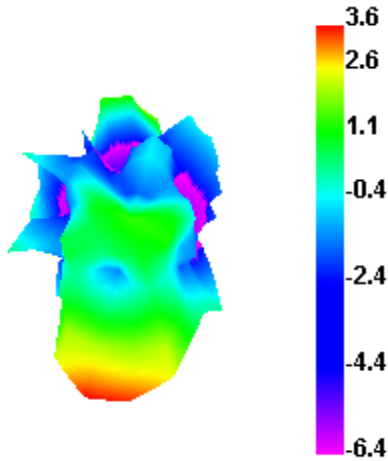
Freq (MHz)	Effi (%)	Max (dBi)	Freq (MHz)	Effi (%)	Max (dBi)	Freq (MHz)	Effi (%)	Max (dBi)
2400	41.38	3.64						
2410	38.13	3.19						
2420	36.82	2.84						
2430	37.19	2.67						
2440	36.71	2.44						
2450	34.48	2.2						
2460	34.94	2.4						
2470	35.91	2.6						
2480	33.94	2.52						
2490	32.21	2.48						
2500	33.06	2.74						

2.4G

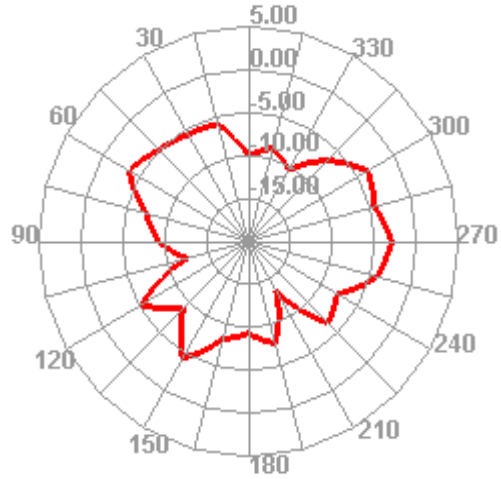
Tester/date	Lyra/20221205	Reviewed by/Date	Wensen/20221205
-------------	---------------	------------------	-----------------



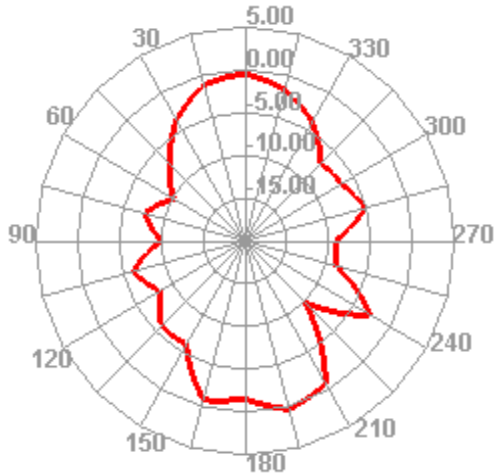
2400.000MHz



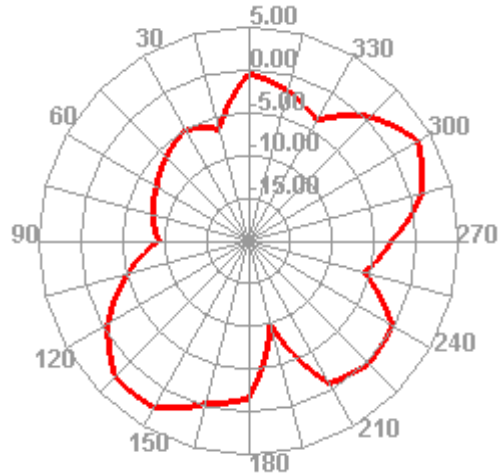
2400.000MHz H



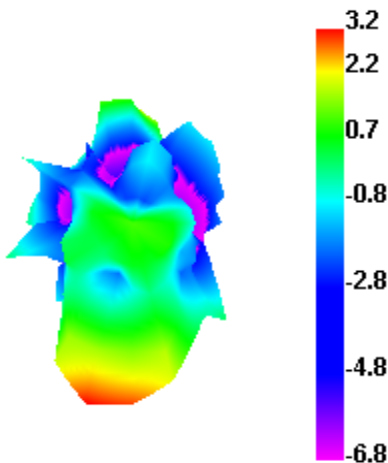
2400.000MHz E1



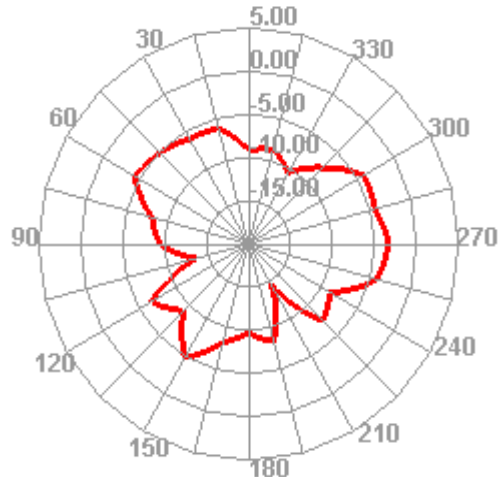
2400.000MHz E2



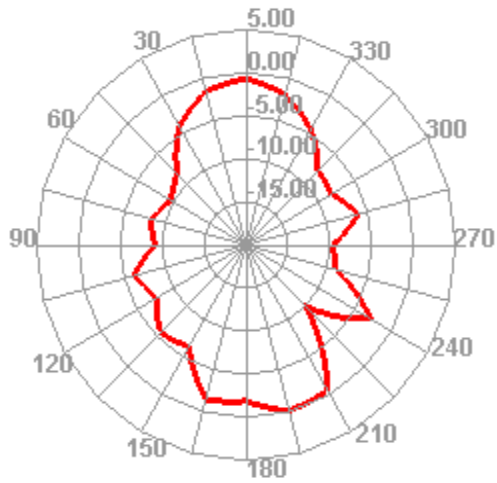
2410.000MHz



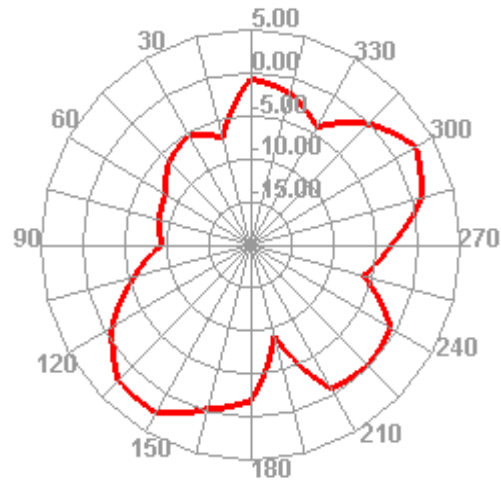
2410.000MHz H



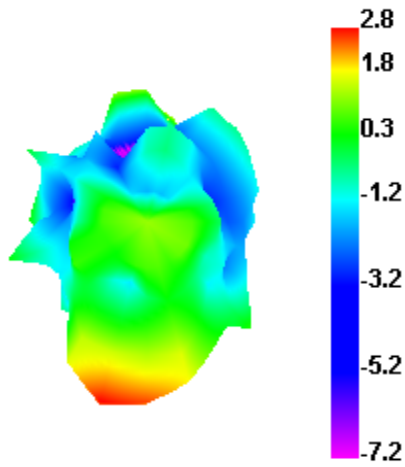
2410.000MHz E1



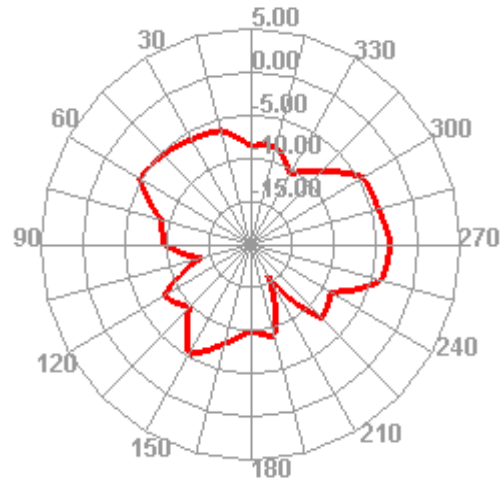
2410.000MHz E2



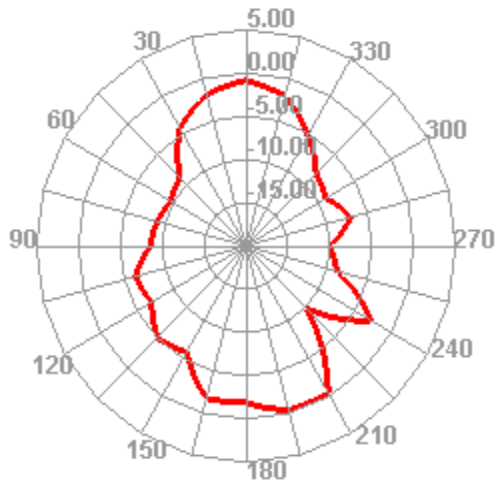
2420.000MHz



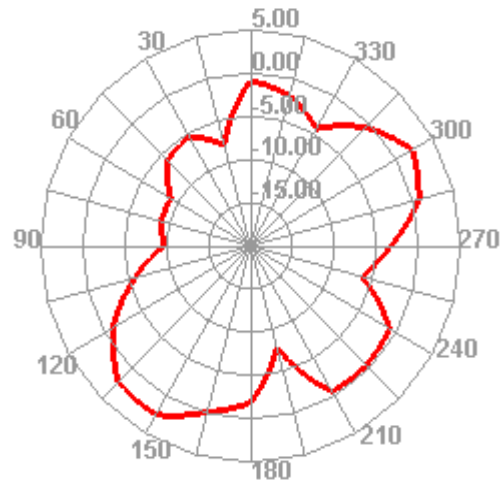
2420.000MHz H



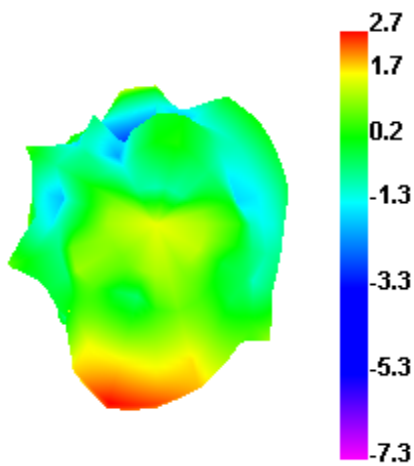
2420.000MHz E1



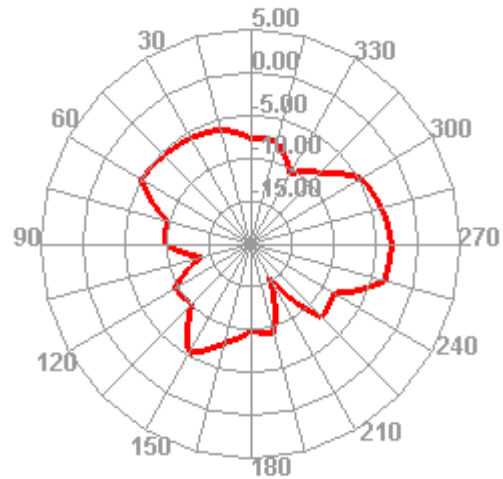
2420.000MHz E2



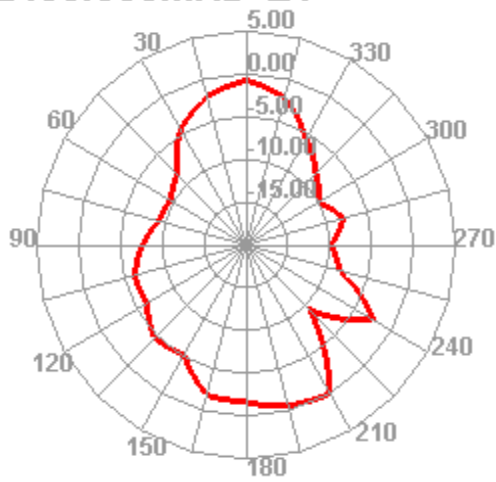
2430.000MHz



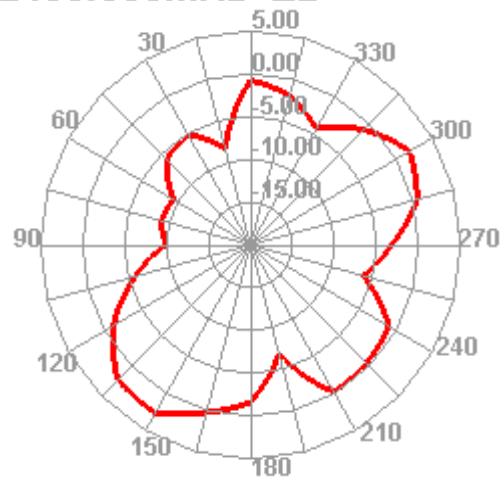
2430.000MHz H



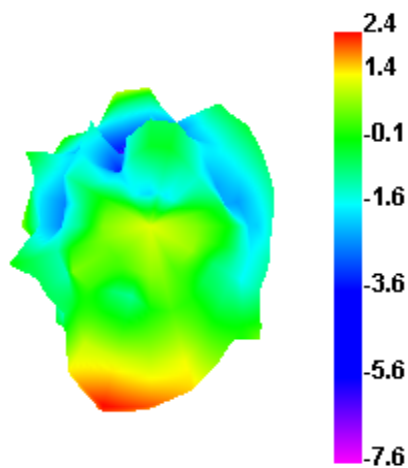
2430.000MHz E1



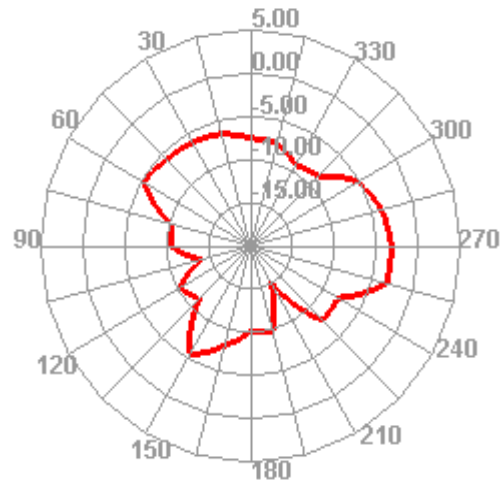
2430.000MHz E2



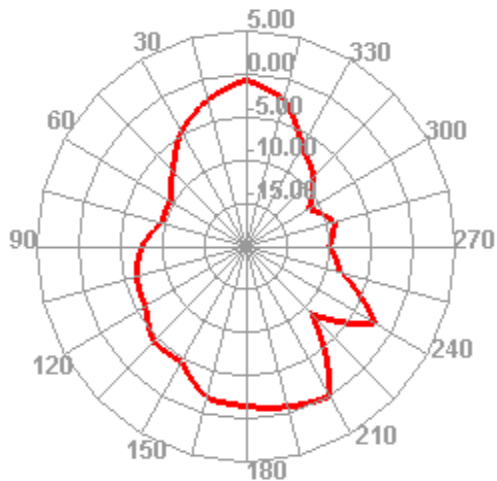
2440.000MHz



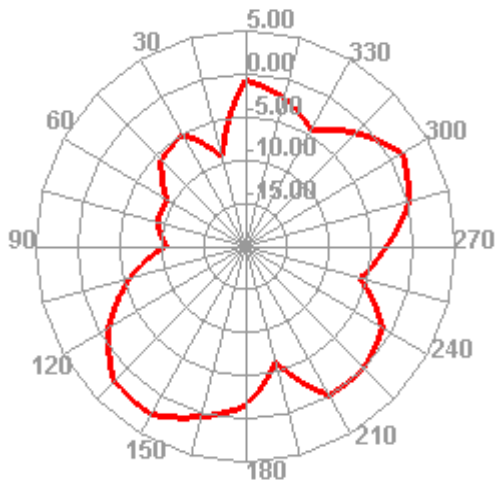
2440.000MHz H



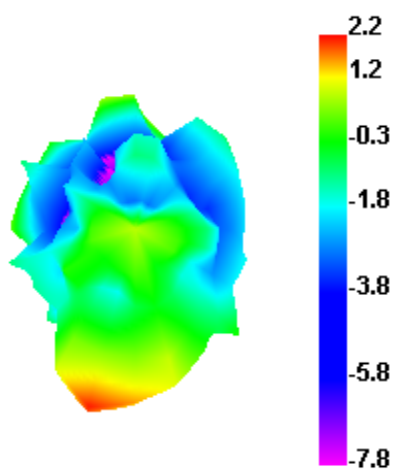
2440.000MHz E1



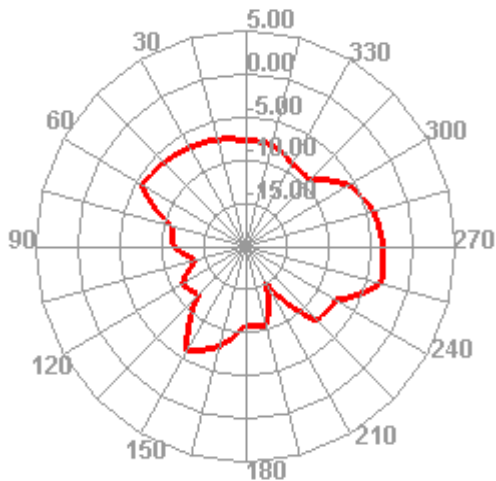
2440.000MHz E2



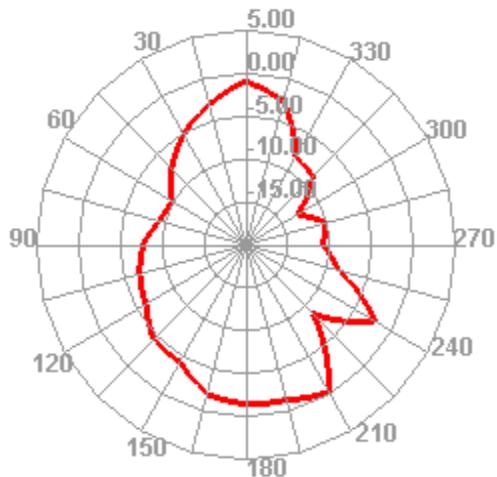
2450.000MHz



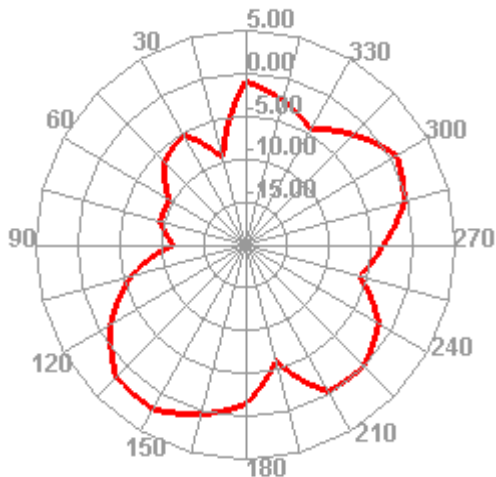
2450.000MHz H



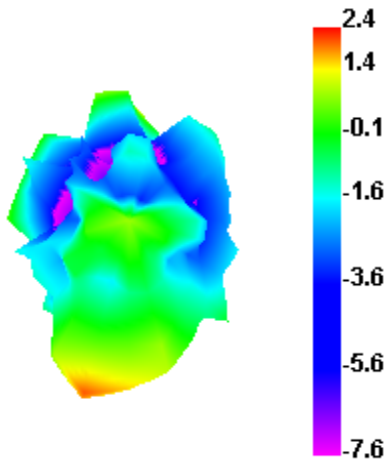
2450.000MHz E1



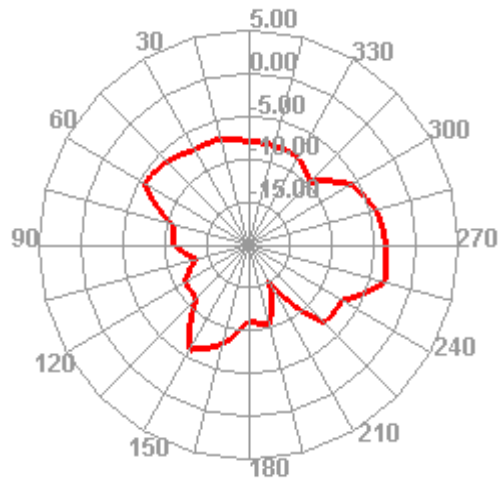
2450.000MHz E2



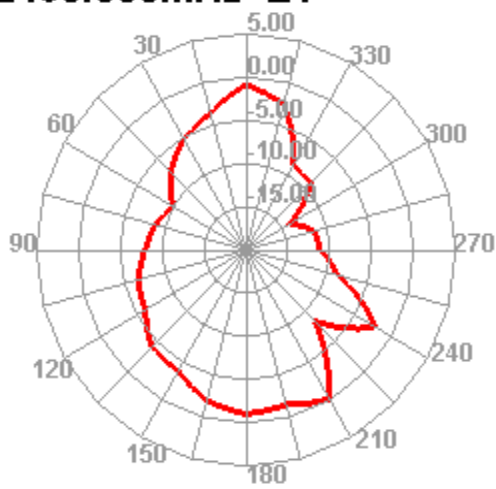
2460.000MHz



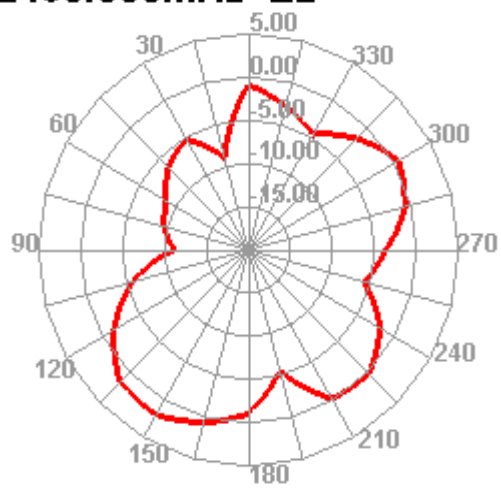
2460.000MHz H



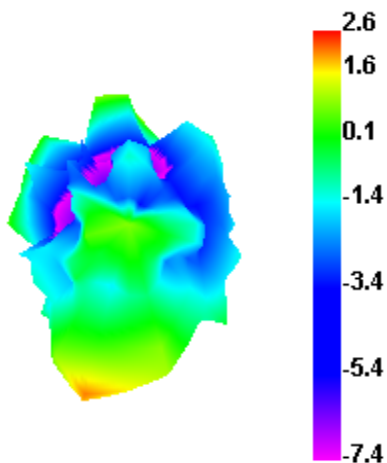
2460.000MHz E1



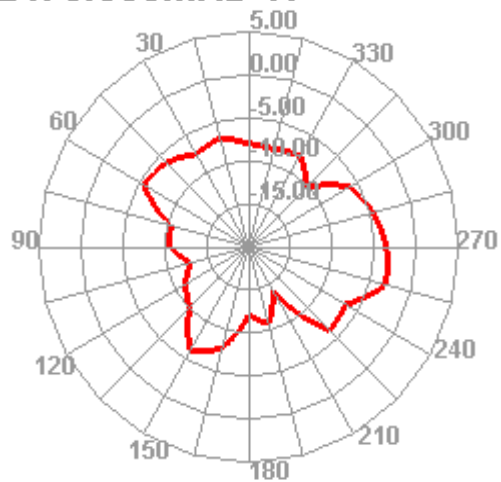
2460.000MHz E2



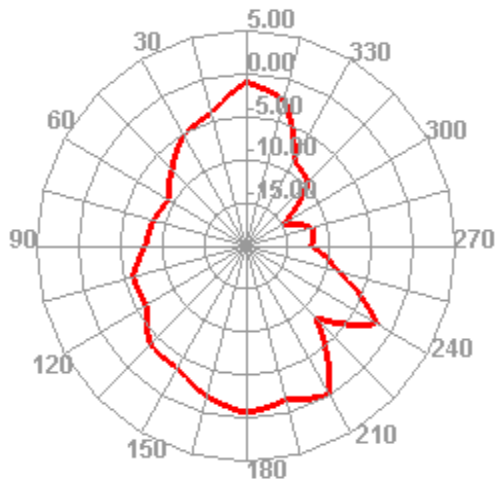
2470.000MHz



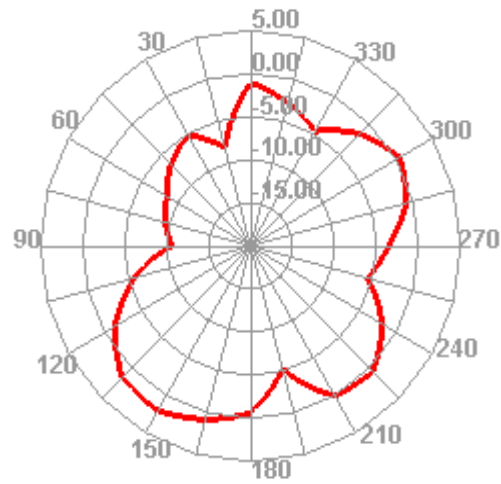
2470.000MHz H



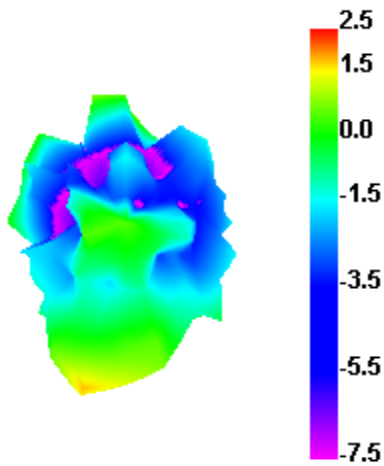
2470.000MHz E1



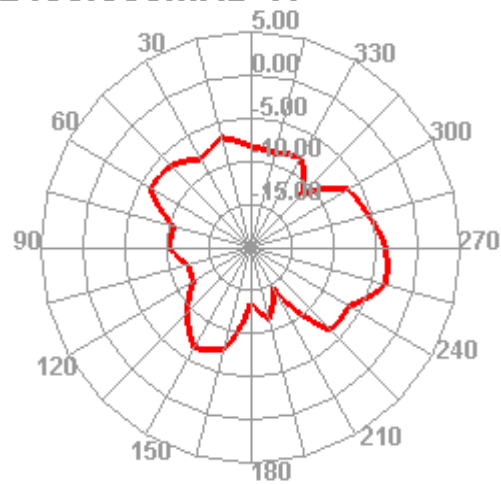
2470.000MHz E2



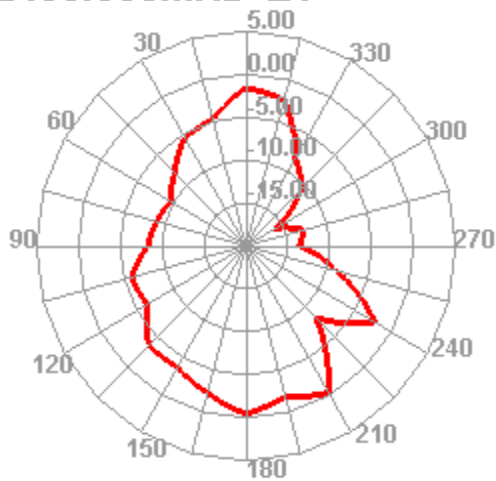
2480.000MHz



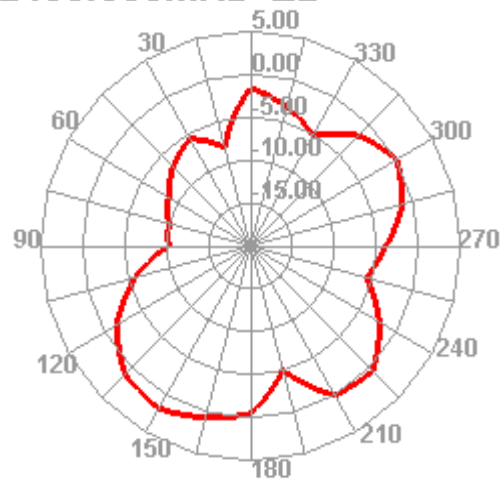
2480.000MHz H



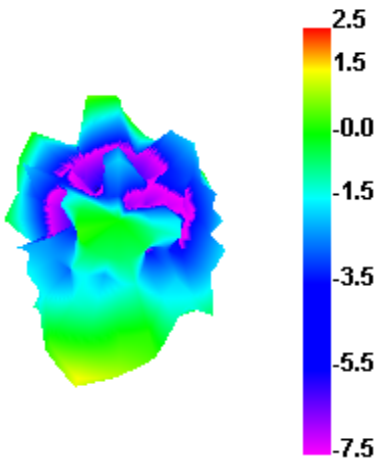
2480.000MHz E1



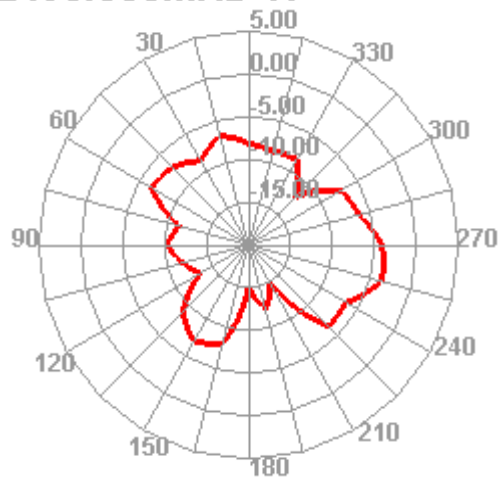
2480.000MHz E2



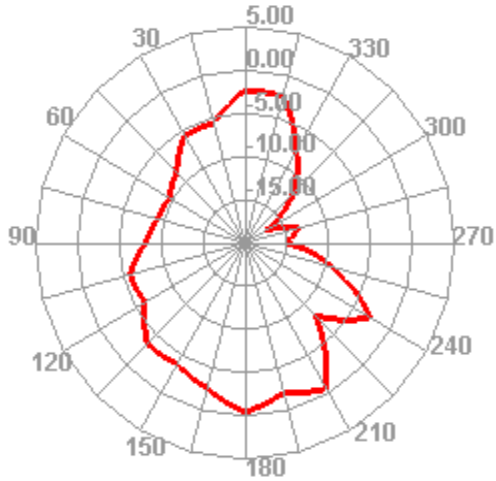
2490.000MHz



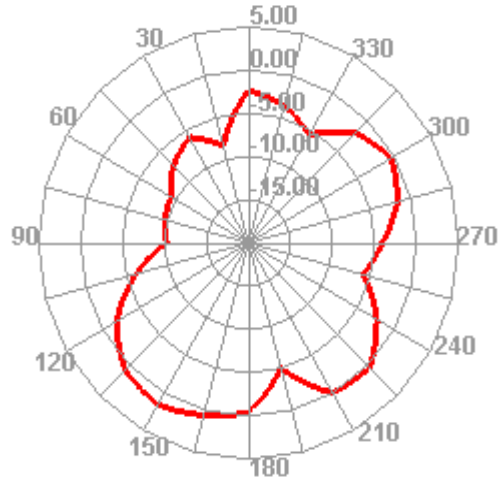
2490.000MHz H



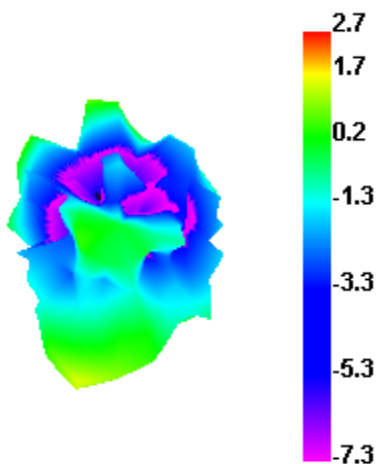
2490.000MHz E1



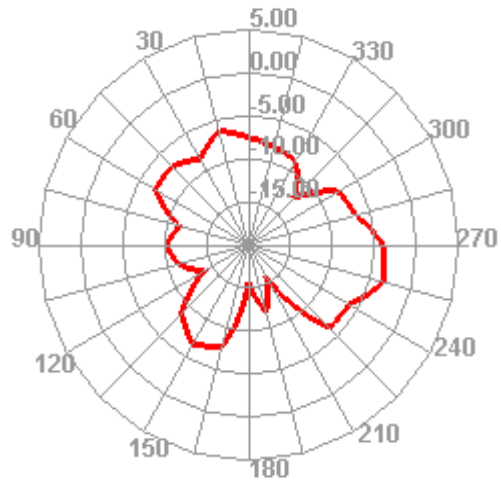
2490.000MHz E2



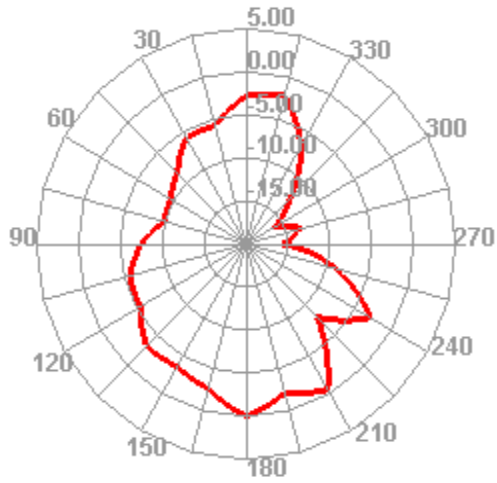
2500.000MHz



2500.000MHz H



2500.000MHz E1



2500.000MHz E2

