



福州市瀚宇正达电子有限公司

Word Easy Electronics Co.,Ltd.

规格承认书

SPECIFICATION FOR APPROVAL

日期 2021/04/30

Date

编号 21043001

File No

版本 1.0

Revision

客户 星网

CUSTOMER: _____

客户料号 E12

CUSTOMER NO: _____

品名 WIFI Antenna L=45mm MHF

PART NAME: _____

供方料号 WE007N.F0094.V01

SUPPLIER NO: _____

送样日期Date: 送样数量Q “TY:

客户确认CUSTOMER APPROVED BY

APPROVAL

CHIEF

SUPERVISOR

供方确认 SUPPLIER SIGNATURE

APPROVAL

CHECK

DESIGN

Hunter
工程专用章

Zhou Hongtao

Liang

WE-RD-F01-A

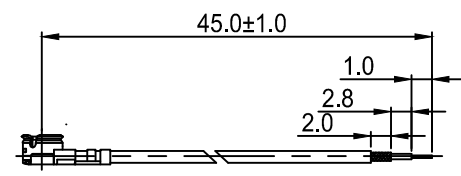
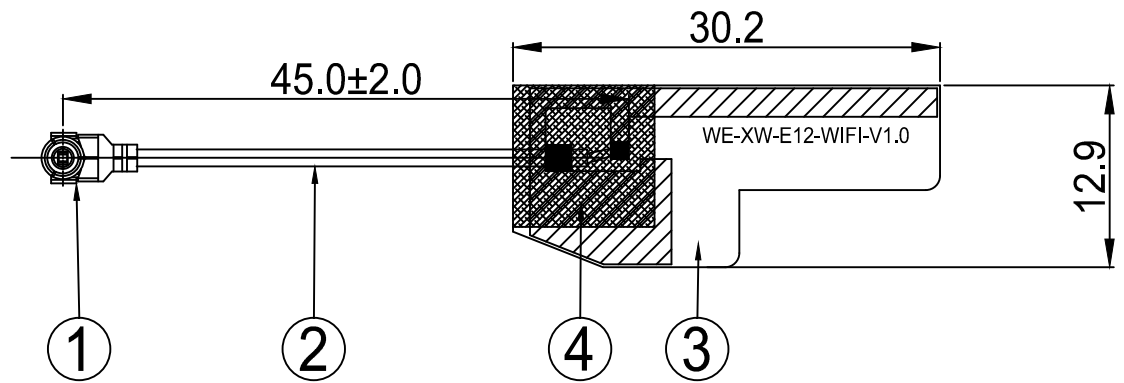


承认书项目表

NO.	内容 (Contents)	页数 (Number of Page)	页码 (Page Code)
1	承认书封面 (Spec Cover)	1	1
2	承认书项目表 (Spec Item)	1	2
3	工程成品图 (Drawing)	1	3
4	天线规格 (Antenna Specification)	1	4
5	S参数测试 (S Parameter)	1	5
6	无源测试 (Passive Test)	2	6 ~ 7
7	有源测试 (Active Test)	2	8 ~ 9
8	天线装配图 (Antenna Profile)	2	10 ~ 11
9	材质证明 (Material Certificate)	**	**
10	RoHS报告 (RoHS Test Report)	**	**
11	N/A	N/A	N/A
12	-	-	-
13	-	-	-
14	-	-	-

RoHS
Compatible

REV.	DESCRIPTION	DATE
△	首次发行	2021.04.30



4	Acetate Cloth	10.0*10.0MM	Acetate Cloth	FAB0001.V01	1
3	FPCB	30.2*12.9MM	FPCB	FPC0215.V01	1
2	Coaxial Cable	O.D.1.13 Gray	O.D.1.13	CAB0113.V02	1
1	Mini Connector	Au Plated 1代	Cu	MET0XD1.V01	1
NO	PART NAME	DESCRIPTION	Material	Part Number	Q.TY


福州市瀚宇正达电子有限公司
 World Easy Electronics Co.,Ltd.

Tel:0591-22628085
 Fax:0591-22627656

PART NAME: WIFI Antenna L=45mm MHF
PART NO.: WE007N.F0094.V01 **DATE: 2021-04-30**

APPROVED BY	CHECKED BY	DESIGNED BY	 Tolerance X.X ±0.50 X.XX±0.15 X° ±3°
		周红涛	
		UNITS: mm	
		SCALE: 1/1	

REVISION: A



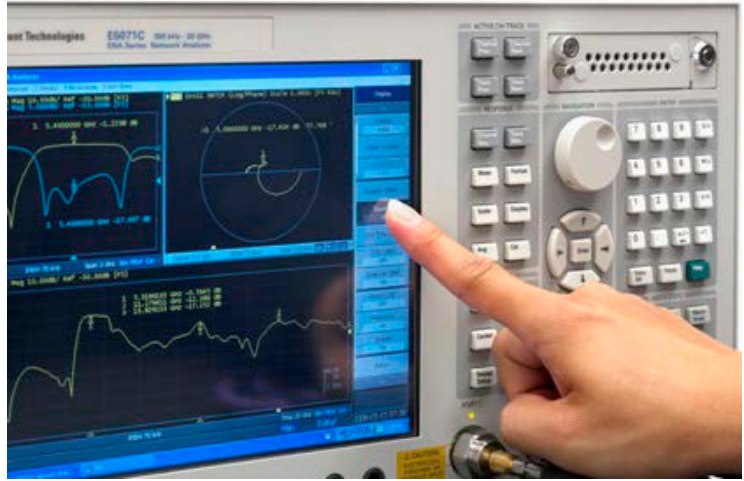
天线规格

Antenna Specification

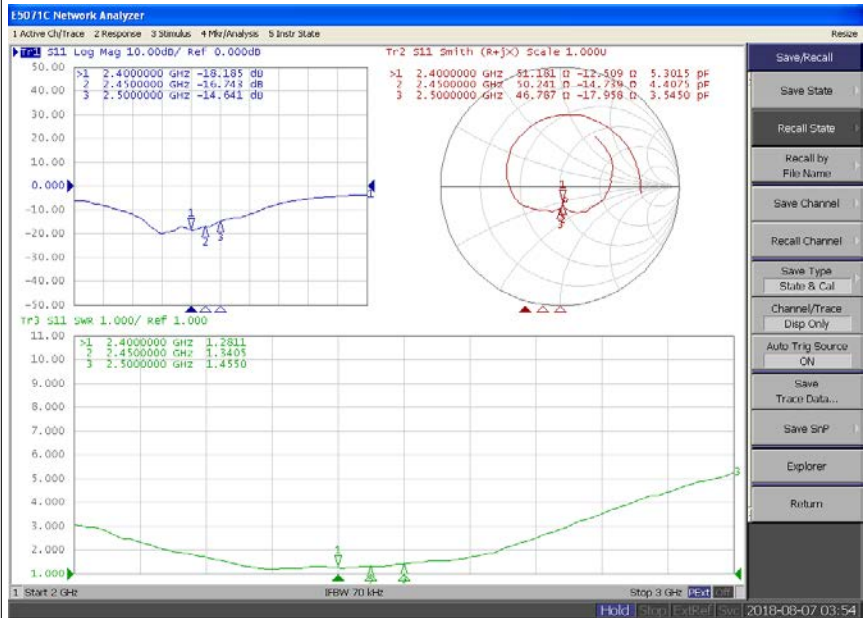
Electrical Properties	
Frequency	2400-2500MHz
Impedance	50 Ohm Nominal
V.S.W.R	≤1.5
Return Loss	≤-14
Radiation	Omni-directional
Gain (Peak)	1.7dBi
Polarization	Linear
Connector	1代I-PEX
Physical Properties	
Antenna Material	FPC
Cable Type	O.D.1.13//L=45mm
Operating Temp.	-10 ~ +60 °C
Storage Temp.	-10 ~ +70 °C
Cable Color	Gray



Agilent E5071C

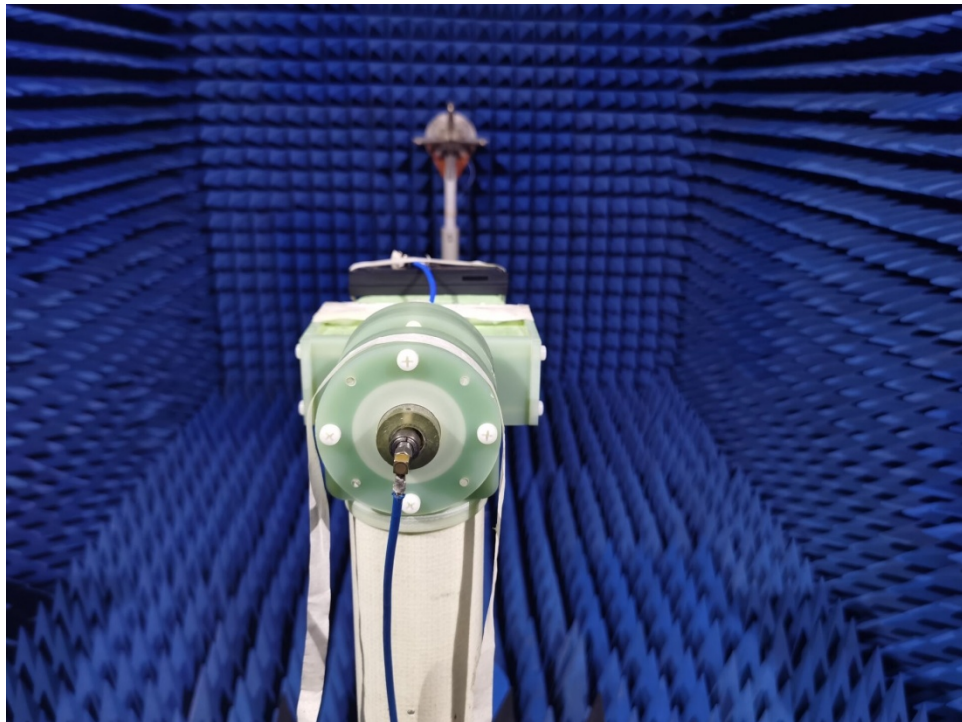
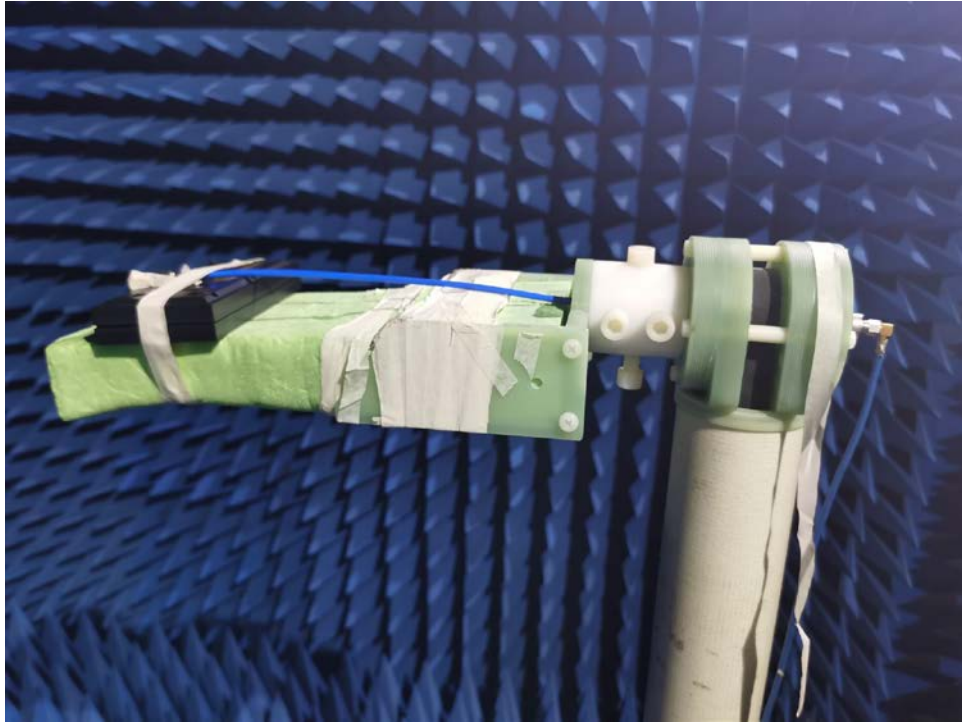


S Parameter Test // WIFI





Antenna Passive Test



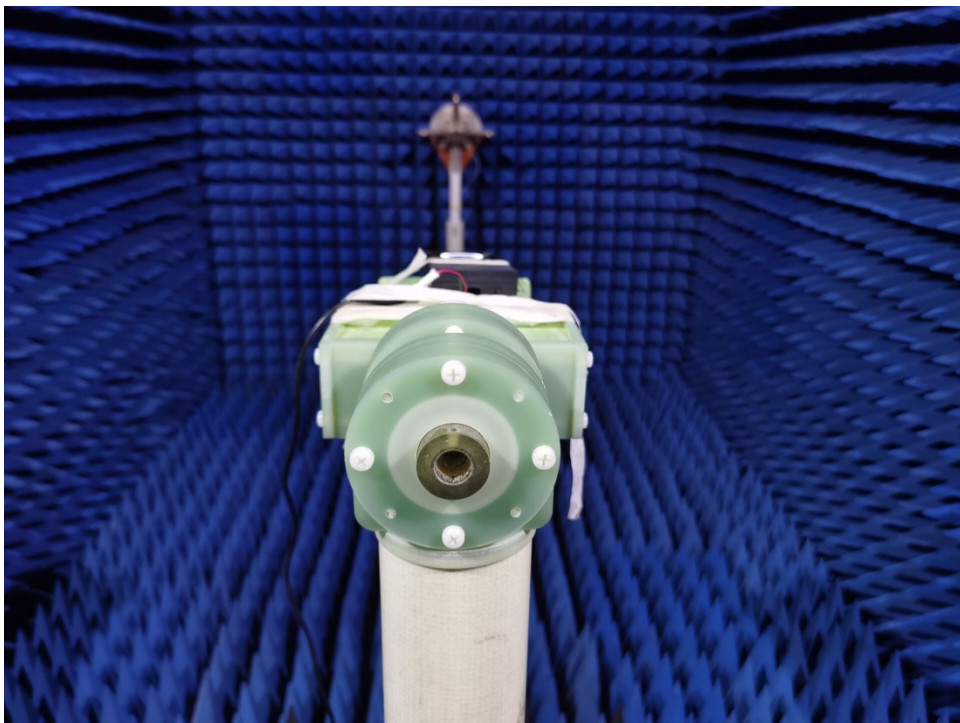
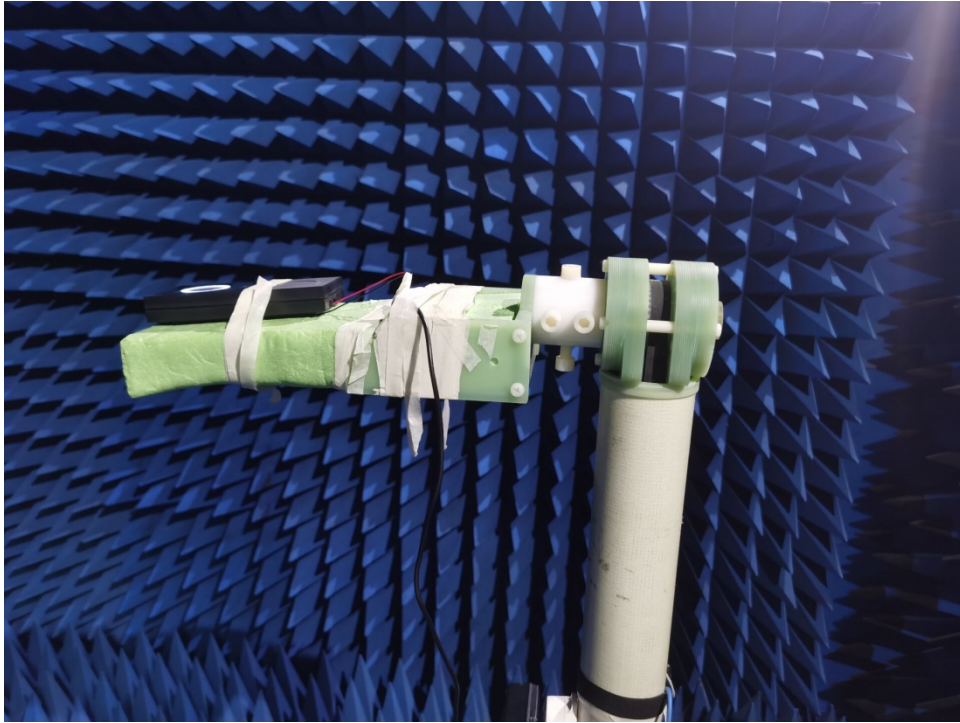


Passive Test For WIFI

Freq (MHz)	Effi (%)	Effi (dB)	Gain (dBi)
2400	56.2	-2.5	1.2
2410	61.3	-2.1	1.7
2420	58.4	-2.3	1.7
2430	55.4	-2.6	1.5
2440	55.5	-2.6	1.6
2450	52.9	-2.8	1.5
2460	55.2	-2.6	1.7
2470	48.3	-3.2	1.2
2480	49.0	-3.1	1.2
2490	48.7	-3.1	1.1
2500	50.2	-3.0	1.2



Antenna Active Test





OTA Test For WIFI

Band	Channel	Data Rate	TRP	EIRP	Data Rate	TIS	EIS
WIFI 2.4G 802.11b	1	11Mbps	14.0	18.6	11Mbps	-80.4	-85.0
	6		14.1	18.3		-81.2	-85.3
	13		14.0	17.9		-80.9	-84.0
WIFI 2.4G 802.11g	1	6Mbps	13.0	17.4	54Mbps	-65.7	-70.3
	6		13.1	17.3		-66.5	-70.5
	13		12.7	16.5		-65.5	-68.6
WIFI 2.4G 802.11n	1	MCS7	11.3	16.0	MCS7	-61.9	-66.5
	7		11.2	15.3		-63.1	-67.1
	13		10.6	14.5		-61.8	-64.8

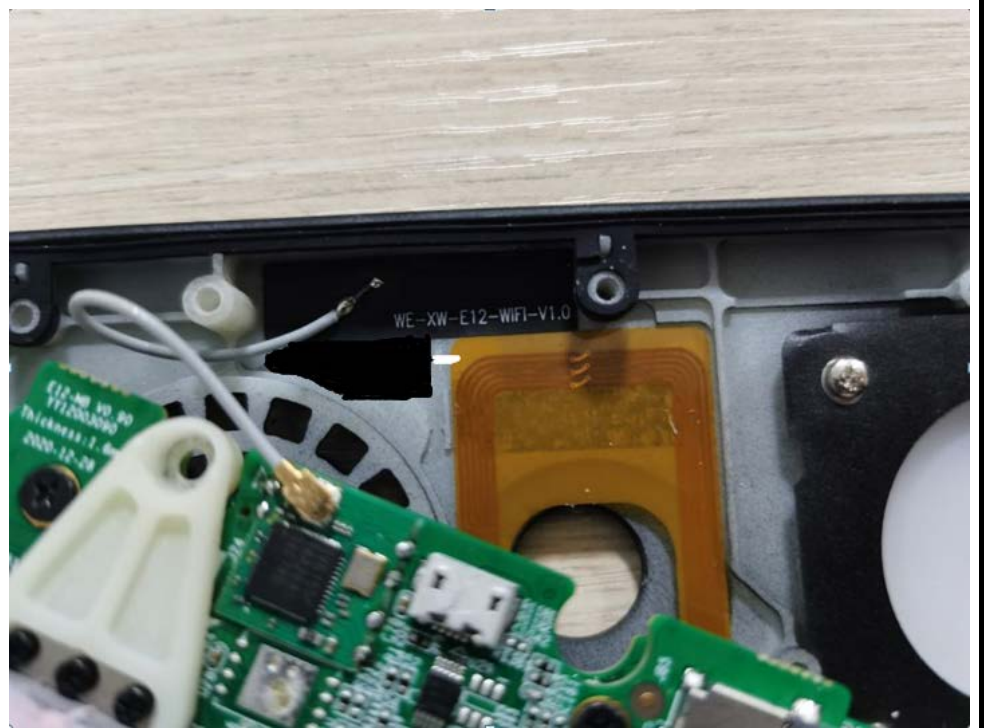


Antenna Profile

Device

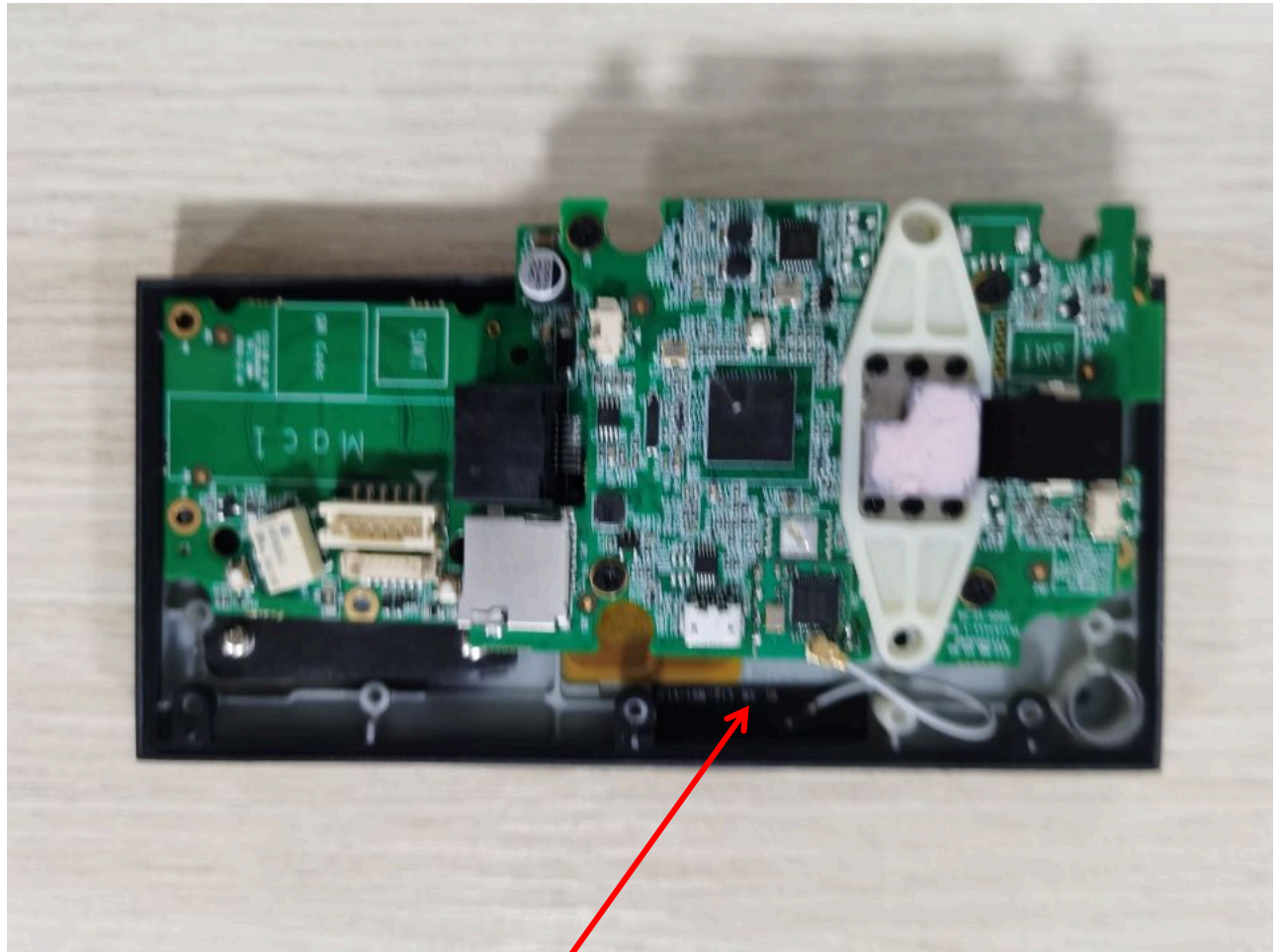


*Antenna
WiFi*





Assembly Drawing



WiFi Antenna