
32" HD Digital LED TV



INSTRUCTION MANUAL

Please read all the instructions carefully before using this TV,
and keep the manual for future reference.

| | |
|--------------------------------------|-----------|
| Important Safety Instructions | 2 |
| Additional Safety Information | 3 |
| Preparations | 4 |
| What's Included | |
| Front/Side View | |
| Rear View | |
| Wall Mounting | |
| Remote Control | |
| Connecting External Devices | 8 |
| Customizing TV Settings | 9 |
| Turning On/Off Your TV | |
| Setup Wizard | |
| Navigating The On-screen Display | |
| Streaming | |
| Media | |
| Viewing Photos | |
| Listening To Music | |
| Selecting The Input Source | |
| Channel Selection | |
| Volume Adjustment | |
| Setup | |
| Settings | |
| Audio Settings | |
| Picture Settings | |
| Channel Settings | |
| Time Settings | |
| Network Settings | |
| Lock Settings | |
| Parental Control | |
| Troubleshooting | 24 |
| FCC Notes | 27 |
| Specifications | 27 |
| OTT APP Service | 28 |

IMPORTANT SAFETY INSTRUCTIONS

- **Read these instructions** – All the safety and operating instructions should be read before this product is operated.
- **Keep these instructions** – The safety and operating instructions should be retained for future reference.
- **Heed all warnings** – All warnings on the appliance and in the operating instructions should be adhered to.
- **Follow all instructions** – All operating and use instructions should be followed.
- **Do not use this apparatus near water** – The appliance should not be used near water or moisture – for example, in a wet basement or near a swimming pool, and the like.
- Clean only with dry cloth.
- **Do not** block any ventilation openings. Install in accordance with the manufacturer's instructions.
- **Do not** install near any heat sources such as radiators, heat registers, stoves, or other apparatus (including amplifiers) that produce heat.
- **Do not** defeat the safety purpose of the polarized or grounding-type plug. A polarized plug has two blades with one wider than the other. A grounding-type plug has two blades and a third grounding prong. The wide blade or the third prong are provided for your safety. If the provided plug does not fit into your outlet, consult an electrician for replacement of the obsolete outlet.
- Protect the power cord from being walked on or pinched particularly at plugs, convenience receptacles, and the point where they exit from the apparatus.
- Only use attachments/accessories specified by the manufacturer.
- Use only with the cart, stand, tripod, bracket, or table specified by the manufacturer, or sold with the apparatus. When a cart is used, use caution when moving the cart/apparatus combination to avoid injury from tip-over.



- Unplug this apparatus during lightning storms or when unused for long periods of time.

- Refer all servicing to qualified service personnel. Servicing is required when the apparatus has been damaged in any way, such as the power-supply cord or plug is damaged, liquid has been spilled or objects have fallen into the apparatus, the apparatus has been exposed to rain or moisture, does not operate normally, or has been dropped.
- Please keep the unit in a well-ventilated environment.

WARNING: To reduce the risk of fire or electric shock, do not expose this apparatus to rain or moisture. The apparatus should not be exposed to dripping or splashing. Objects filled with liquids, such as vases should not be placed on apparatus.

WARNING: The batteries shall not be exposed to excessive heat such as sunshine, fire or the like.

WARNING: The main plug is used as disconnect device, the disconnect device shall remain readily operable.

WARNING: To reduce the risk of electric shock, do not remove cover (or back) as there are no user-serviceable parts inside. Refer servicing to qualified personnel.



This lightning flash with arrowhead symbol within an equilateral triangle is intended to alert the user to the presence of non-insulated "dangerous voltage" within the product's enclosure that may be of sufficient magnitude to constitute a risk of electric shock.



The exclamation point within an equilateral triangle is intended to alert the user to the presence of important operating and maintenance instructions in the literature accompanying the appliance.



This equipment is a Class II or double insulated electrical appliance. It has been designed in such a way that it does not require a safety connection to electrical earth.



This product meets ENERGY STAR[®] guidelines for energy efficiency. ENERGY STAR[®] and the ENERGY STAR[®] mark are registered U.S. marks. ENERGY STAR[®] is a registered mark owned by the U.S. government.

ADDITIONAL SAFETY INFORMATION

To ensure reliable and safe operation of this equipment, please read carefully all the instructions in this user guide, especially the safety information below.

Electrical Safety

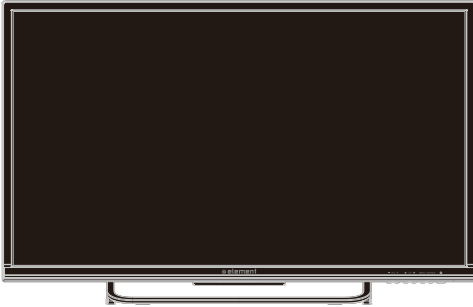
- The TV set should only be connected to a main power supply with voltage that matches the label at the rear of the product.
- To prevent overload, do not share the same power supply socket with too many other electronic components.
- Do not place any connecting wires where they may be stepped on or tripped over.
- Do not place heavy items on them, which may damage the leads.
- Hold the main plug, not the wires, when removing from a socket.
- During a thunderstorm, or when not using the television for extended period of time, turn off the power switch on the back of the television.
- Do not allow water or moisture to enter the TV or power adapter. Do NOT use in wet, moist areas, such as bathrooms, steamy kitchens or near swimming pools.
- Pull the plug out immediately, and seek professional help if the main plug or cable is damaged, liquid is spilt onto the set, if accidentally exposed to water or moisture, if anything accidentally penetrates the ventilation slots or if the set does not work normally.
- Do not remove the safety covers. There are no user serviceable parts inside. Trying to service the unit yourself is dangerous and may invalidate the product's warranty. Qualified personnel must only service this apparatus.
- To avoid battery leakage, remove exhausted batteries from the remote control, or when not using for long period.
- Do not break open or throw exhausted batteries on a fire.
- Do not mix old and new batteries.
- Do not mix Alkaline, Standard (Carbon-Zinc) or Rechargeable (Nickel Cadmium) or (Nickel Metal Hydride) batteries.

Physical Safety

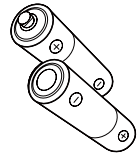
- Do not block ventilation slots in the back cover. You may place the TV in a cabinet, but ensure at least 5cm (2") clearance all around.
- Do not tap or shake the TV screen, or you may damage the internal circuits. Take good care of the remote control.
- To clean the TV use a soft dry cloth. Do not use solvents or petroleum based fluids.
- Do not install near any heat sources such as radiators, heat registers, stoves or other apparatus (including amplifiers) that produce heat.
- Do not defeat the safety purpose of the polarized or grounding-type plug. A polarized plug has two blades with one wider than the other. A grounding type plug has two blades and a third grounding prong, the wide blade, or the third prong is provided for your safety. If the provided plug does not fit into your outlet, consult an electrician for replacement of the obsolete outlet.
- Protect the power cord from being walked on or pinched particularly at plugs.
- Unplug the apparatus during lightning storms or when unused for long periods.
- Refer all servicing to a qualified service personnel. Servicing is required when the apparatus has been damaged in any way, such as power-supply cord or plug is damaged, liquid has been spilled, or objects have fallen into the apparatus, has been exposed to rain or moisture, does not operate normally, or has been dropped.
- Please always connect your television to a power outlet with protective ground connection.

PREPARATIONS

What is Included?



TV Set



Remote Control with Batteries



User Manual



Quick Start Guide

Did you know?
Target offers free technical assistance on all products.

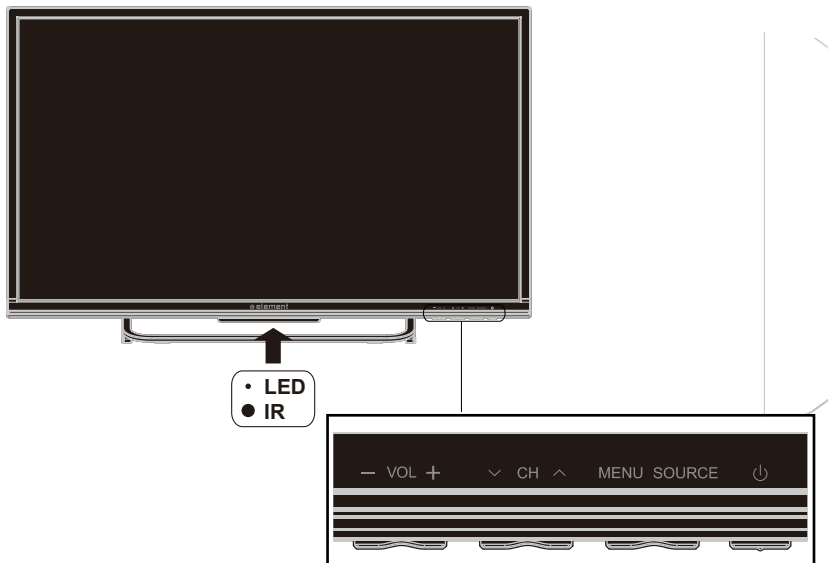
1-877-myTGTech
(1-877-669-4663)




Products Technical Assistance

PREPARATIONS

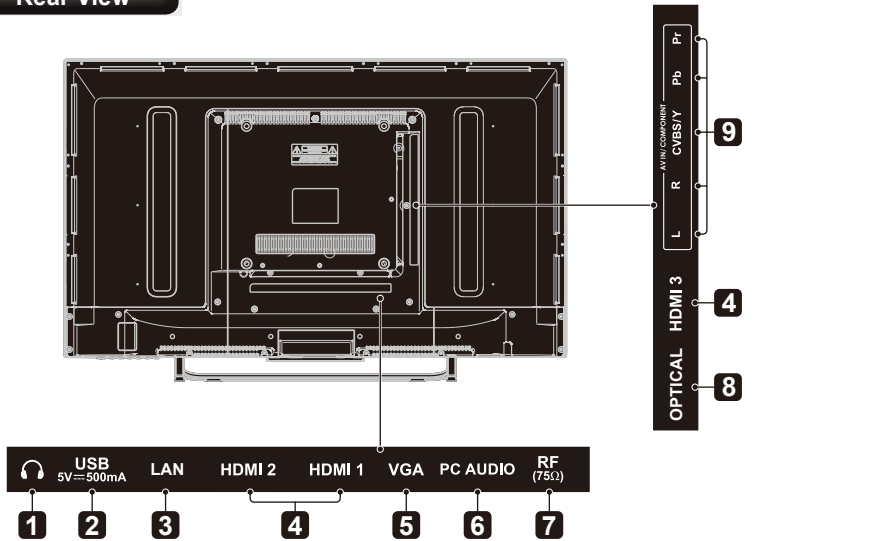
Front/Side View



-  Switch the TV between On / Standby mode.
- **SOURCE**
Press to select among different input signal sources.
- **MENU**
Display the OSD (on screen display) menu.
- **CH ^/v**
Press to select a channel.
- **VOL +/-**
Press to adjust the volume.
- **LED**
The LED light indicates when the TV is activated.
- **IR**
Infrared Receiver.

PREPARATIONS

Rear View



1. Headphone output

Connect to the Headphones.

2. USB Input

Connect to a USB storage device to play photo files. (USB mode)

3. LAN

Network connection port.

4. HDMI Inputs

Connect to a High-Definition (HD) signal input device.

5. VGA Input

Connect to a computer or other devices with a VGA interface.

6. PC Audio Input

Connect to a computer audio output.

7. Antenna Input (75Ω VHF/UHF)

Connect to the antenna (75Ω VHF/UHF) socket with the RF coaxial cable.

8. Optical Output

Connect a digital sound system to this jack.

9. COMPONENT/AV Input

Connect to AV devices with composite/ component (Y/Pb/Pr) video and audio output sockets. COMPOSITE VIDEO and COMPONENT(Y/PB/PR) share with AUDIO IN (L/R).

Wall Mounting

The TV is provided with mounting holes for a VESA approved wall mounting bracket (Not Supplied). Remove the screws holding the base to the base bracket and lift the base away (do not remove the base mounting brackets). Mount the VESA bracket using 4*M6 isometric threaded screws (Not Supplied). Do not use screws longer than 20mm; damage will occur to the internal parts.

Caution:

Your new TV is heavy, please consult with a professional wall mount installer to perform this installation.

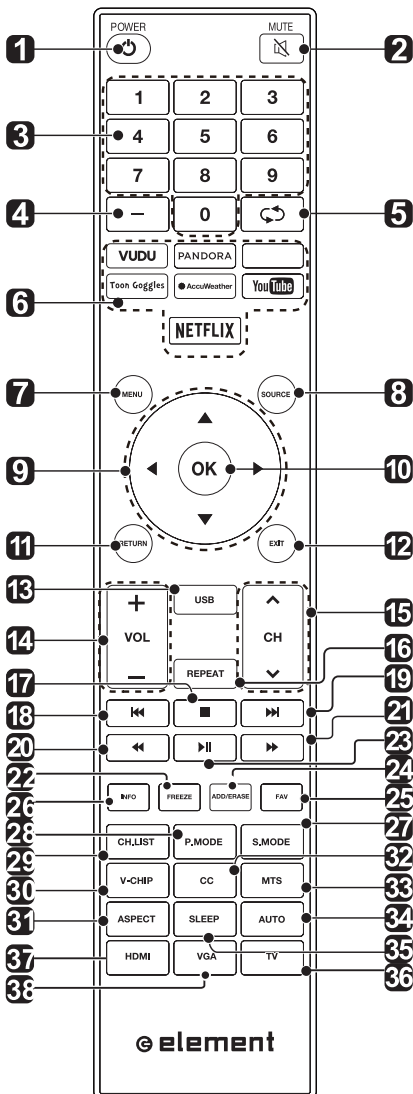
be applied.



Your new TV is heavy, please consult with professional wall mount installer to perform this installation.

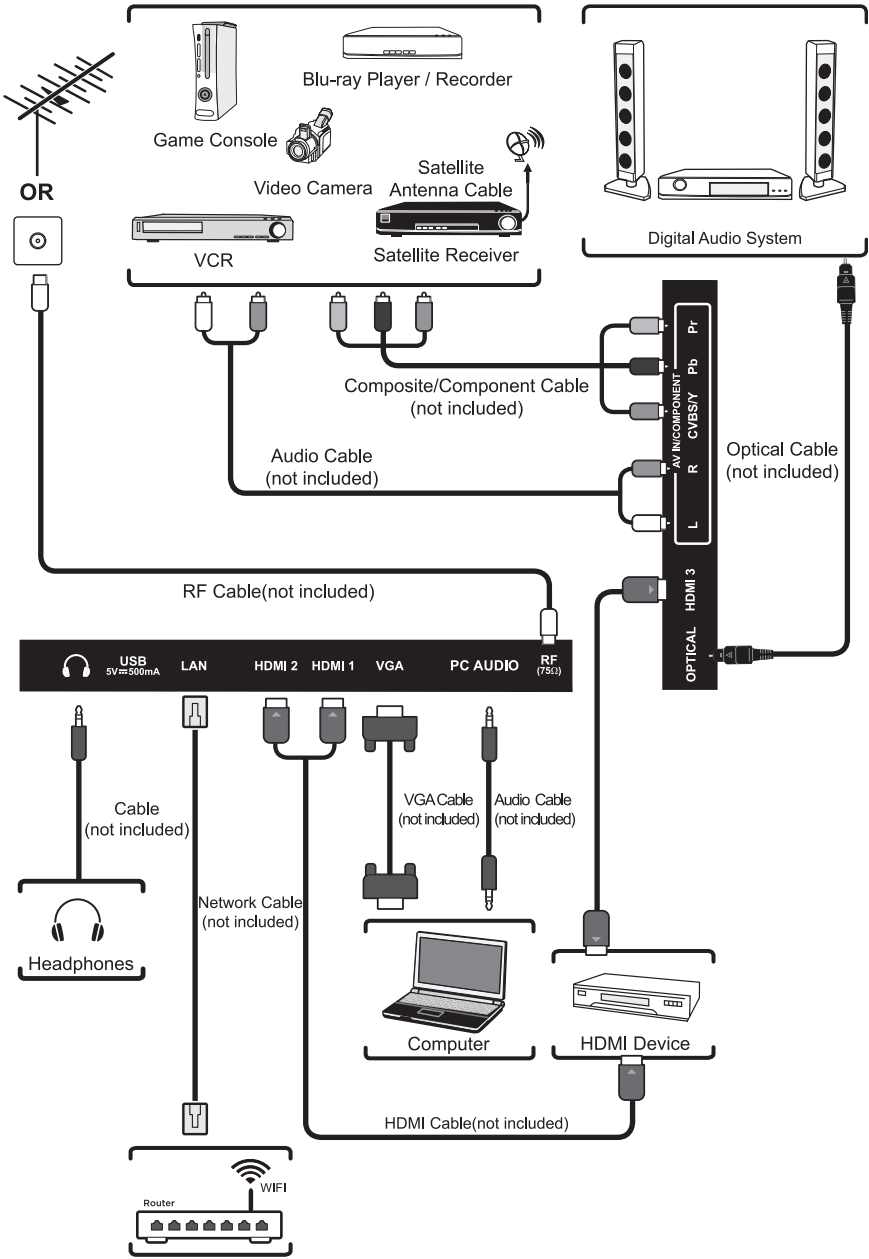
PREPARATIONS

Remote Control



1. : Switch the TV between On and Standby mode.
2. : Mute and restore TV sound.
3. **0-9**: Select a program. (ATV/DTV mode)
4. : Enter multiple program channel number such as 2-1.
5. : Return to the previous viewing channel.
6. **APP**: Press to select the desired APP.
7. **MENU**: Display the main menu.
8. **SOURCE**: Select among the different input signal sources: TV/AV/COMPONENT/HDMI1/HDMI2/HDMI3/VGA.
9. : Allows you to navigate the on screen display menus and adjust the system settings to your preference.
10. **OK**: Confirm the selection.
11. **RETURN**: Return to previous menu.
12. **EXIT**: Exit the on screen display menu.
13. **USB**: Access into the USB directly.
14. **VOL +/-**: Adjust the volume.
15. **CH +/-**: Select the channel.
16. **REPEAT**: Press repeatedly to select the repeat mode.
17. : Stop the playback.
18. : Skip to the beginning of the previous chapter/track/photo.
19. : Skip to the beginning of the next chapter/track/photo.
20. : Reverse playback rapidly.
21. : Advance playback rapidly.
22. **FREEZE**: Freeze the picture.
23. : Start playback or pause.
24. **ADD/ERASE**: Add or delete Favorite channels.
25. **FAV**: Display the favorite channel list.
26. **INFO**: Display the present screen information such as the current channel and input source.
27. **S.MODE**: Select sound mode: standard/music/movie/user.
28. **P.MODE**: Select picture mode: dynamic/movie/energy saving/user/standard.
29. **CH.LIST**: Display program list.
30. **V-CHIP**: Set up parental control.
31. **ASPECT**: Select the aspect ratio. settings: standard/wide/wide zoom/zoom/Just Scan (HDMI)/Dot to Dot(VGA).
32. **CC**: Closed Caption selection: ON/OFF/CC On Mute.
33. **MTS**: Switch among different audio channels: STEREO/MONO/SAP.
34. **AUTO**: Press to adjust the picture automatically in VGA source.
35. **SLEEP**: Set the TV sleep timer: OFF/5/10.../180 / 240 min.
36. **TV**: Press to turn to TV mode.
37. **HDMI**: Access into the HDMI directly.
38. **VGA**: Access into the VGA directly.

CONNECTING EXTERNAL DEVICES



CUSTOMIZING TV SETTINGS

Turning On/Off Your TV

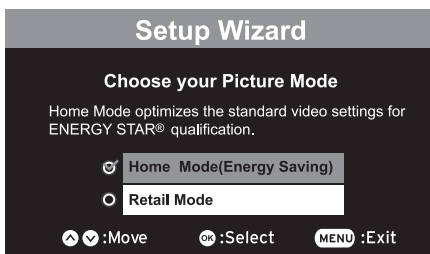
- Connect the power cord to the power socket after you have completed all the physical connections. At this stage, the TV will enter Standby Mode and the red LED indicator will illuminate.
- In Standby Mode, press the **⏻** button on the main unit or on the remote control to turn the TV on. The red LED indicator will turn blue.



The **POWER** button on the main unit or on the remote control can only switch the TV into standby. To completely turn off the TV, please disconnect the power cord from the power socket.

Setup Wizard

- The first time you turn the TV on; it will go into the Setup Wizard. Press the **▲/▼** buttons to select your desired mode and press OK button to confirm.



Home Mode (Energy Saving) is the default as-shipped television configuration and settings. And Home Mode (Energy Saving) is the setting in which the product qualifies for ENERGY STAR®. Any changes to default as-shipped television configuration and settings would change the energy consumption. And enabling certain optional features and functionalities may increase energy consumption beyond the limits required for ENERGY STAR® qualification, as applicable.

Retail Mode: Select Retail Mode if you would like your picture to be brighter. At times this mode may use more energy to operate the Volume/Sound mode and the Picture Mode. In this setting, the power consumption may possibly exceed the limited requirement of the ENERGY STAR® qualification.

ENERGY STAR® is a joint program of the U.S. Environmental Protection Agency and the U.S. Department of Energy helping us all save money and protect the environment through energy efficient products and practices.

The On-MODE Power under Home Mode should be less than 28 W.

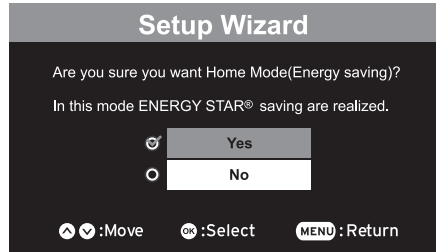
The SLEEP-MODE Power should be less than 0.5 W.

CUSTOMIZING TV SETTINGS

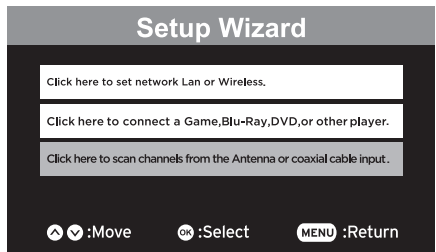
Setup Wizard

- Press Yes to confirm.

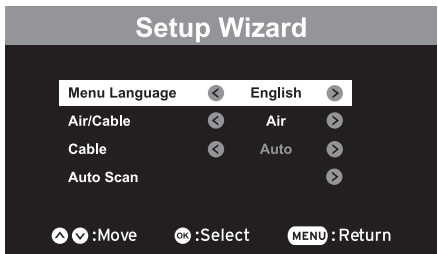
Note: If you want change the modes between Home Mode(Energy Saving) and Retail Mode, you can change the setting in the Setup Menu under Display Mode.



- Press the ▲/▼ buttons to select your desired mode and press OK button to confirm.



- Press the ◀/▶▲/▼ buttons to select your desired mode and press OK button to confirm.

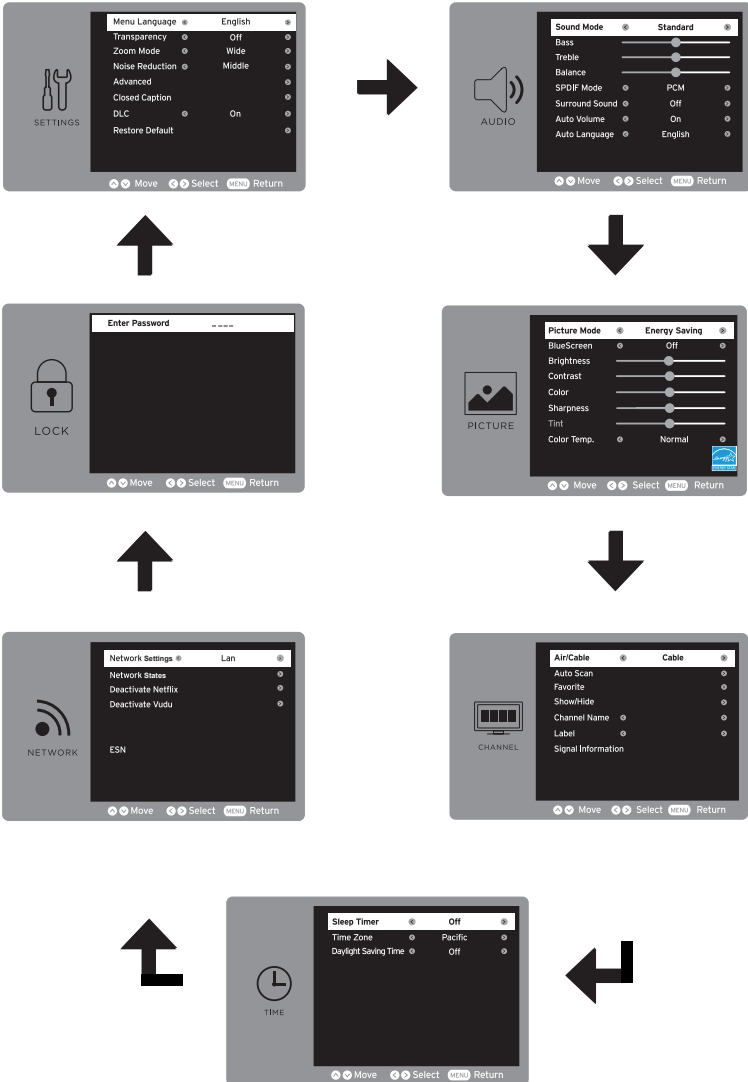


| | |
|----------------------|--|
| Menu Language | Select your desired language to be displayed on the menu. The default on-screen menu language is set as English. |
| Air/Cable | Select antenna between Air and Cable. |
| Cable | Select Cable system: Auto, STD, IRC, HRC. |
| Auto Scan | Search and store the available channels automatically. |

CUSTOMIZING TV SETTINGS

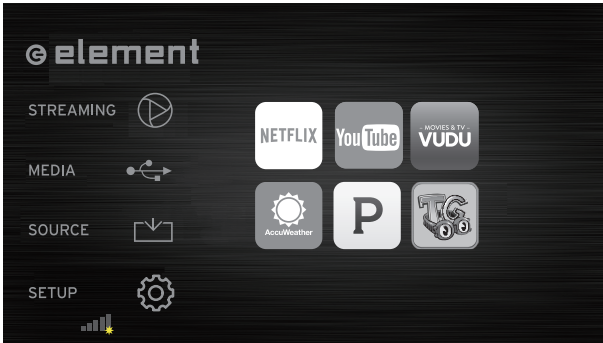
Navigating The On-screen Display

- Press the **MENU** button to display the main menu.
- Press the **▲/▼** buttons to navigate and select the available menus.



CUSTOMIZING TV SETTINGS

Streaming



- Press the **MENU** button on the main unit or on the remote control to display the **STREAMING**. Then press **◀/▶** buttons to select the desired APP and press **OK** button to view what you want. Or press the hotkey on the remote control to enter the APP directly.

Note: After the TV connects to network, the status Unconnected will alter to Connected.

| | |
|--------------------|--|
| NETFLIX | Enjoys TV shows & movies streamed instantly over the Internet. |
| YouTube | YouTube your way on the best screen in your house. |
| VUDU | Discover, watch and collect the latest movies and TV shows in high quality 1080p. Free to sign up. No subscriptions, late fees or commitments. |
| AccuWeather | Displays the current weather conditions and the temperature anywhere in the world in centigrade or Fahrenheit. |
| Pandora | Free personalized radio that offers effortless and endless music enjoyment and discovery. Just start with the name of one of your favorite artists, songs, genres or composers and Pandora will do the rest. It's easy to create personalized stations that play only music you'll love. |
| Toongoggles | A subscription video on-demand platform that offers animated, fun and educational cartoons, engaging games and songs from all over the world and in many different languages to children. |

CUSTOMIZING TV SETTINGS

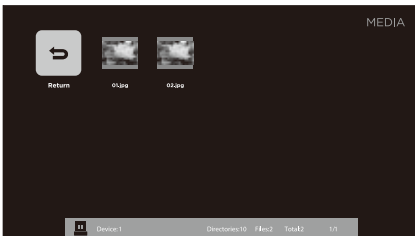
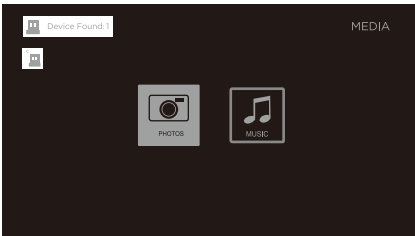
Media



NOTE: Portable storage devices (USB disk or Hard disk) should be inserted.

- Press the **MENU** button on the main unit or on the remote control and then press **▲/▼** buttons to select the **MEDIA**, and then press **OK** button to enter.

Viewing Photos



- After entering **MEDIA**, press **◀/▶** buttons to select **PHOTOS** and then select the disk type to enter. Then use **▲/▼ / ◀/▶** buttons to navigate in the picture folder and then press **▶||** button enter.

Note: File format supported: **JPEG**.

CUSTOMIZING TV SETTINGS

Listening To Music

- After entering **MEDIA**, press **◀/▶** buttons to select **MUSIC** and then select the disk type to enter. Then use **▲/▼ / ◀/▶** buttons to navigate in the music folder and then press **▶▶** button enter.

Note: File format supported: **MP3**.

