



TEST REPORT
FCC ID: 2AHB5-STELLARMF
For

Zhejiang Hanshow Technology Co., Ltd.
Electronic shelf label

Model No. : Stellar-MF, M3F

Prepared for : Zhejiang Hanshow Technology Co., Ltd.

Address : Shanghai JiaoTong University Jiaxing Science Park, No.321,
Jiachuang Rd., Xiuzhou District, Jiaxing City, Zhejiang, China

Prepared by : Shenzhen Alpha Product Testing Co., Ltd.

Address : Building B, East Area of Nanchang Second, Industrial Zone,
Gushu 2nd Road, Bao'an, Shenzhen, China

Report No. : T1860527 05

Date of Receipt : April 10, 2016

Date of Test : April 11, 2016- April 24, 2016

Date of Report : April 25, 2016

Version Number : REV0

TABLE OF CONTENT

Description	Page
1 General Information-----	4
1.1 Description of Device (EUT) -----	4
1.2 Description of Test Facility -----	5
2 EMC Equipment List-----	5
3 Test Procedure-----	7
4 Summary of Measurement-----	8
4.1 Summary of test result -----	8
4.2 Test connection -----	8
4.3 Assistant equipment used for test -----	8
4.4 Test mode-----	9
4.5 Test Conditions -----	9
4.6 Measurement Uncertainty (95% confidence levels, k=2) -----	9
5 Spurious Emission-----	10
5.1 Radiation Emission-----	10
5.2 Radiation Emission Limits(15.209&249) -----	10
5.3 Test Setup -----	11
5.4 Test Procedure -----	13
5.5 Test Equipment Setting For emission test Result.-----	13
5.6 Test Condition -----	14
5.7 Test Result-----	14
6 POWER LINE CONDUCTED EMISSION-----	20
6.1 Conducted Emission Limits(15.207)-----	20
6.2 Test Setup -----	20
6.3 Test Procedure -----	21
6.4 Test Results -----	21
7 Bandwidth-----	22
7.1 Test limit-----	22
7.2 Method of measurement -----	22
7.3 Test Setup -----	22
7.4 Test Results -----	22
8 Antenna Requirement-----	25
8.1 Standard Requirement -----	25
8.2 Antenna Connected Construction -----	25
8.3 Result -----	25
9 Photographs of Test Setup-----	26
9.1 Photos of Radiated emission -----	26
10 Photographs of EUT-----	27

1 General Information

1.1 Description of Device (EUT)

EUT	: Electronic shelf label
Model No.	: Stellar-MF, M3F
DIFF.	: All models are the same, except the color and product model names, so this report performs the model Stellar-MF.
Trade mark	: N/A
Power supply	: DC 3.6V from battery
Radio Technology	: GFSK
Operation frequency	: 2402-2480MHz
Channel No.	79 Channels
Channel Separation	: 1MHz
Modulation	: GFSK
Data Rate	: 500Kps
Antenna Type	: PCB Antenna, max gain 2dBi.
Software version	: 3725
Hardware version	: 3.0.2
Applicant	: Zhejiang Hanshow Technology Co., Ltd.
Address	: Shanghai JiaoTong University Jiaxing Science Park, No.321, Jiachuang Rd., Xiuzhou District, Jiaxing City, Zhejiang, China
Manufacturer	: Zhejiang Hanshow Technology Co., Ltd.
Address	: Shanghai JiaoTong University Jiaxing Science Park, No.321, Jiachuang Rd., Xiuzhou District, Jiaxing City, Zhejiang, China

1.2 Description of Test Facility

Shenzhen Alpha Product Testing Co., Ltd.

Building B, East Area of Nanchang Second, Industrial Zone, Gushu 2nd Road, Bao'an, Shenzhen, China

March 25, 2015 File on Federal Communication Commission

Registration Number: 203110

July 18, 2014 Certificated by IC

Registration Number: 12135A

2 EMC Equipment List

Equipment	Manufacture	Model No.	Serial No.	Last cal. Due To	Cal Interval
3m Semi-Anechoic	ETS-LINDGREN	N/A	SEL0017	2017.01.16	1 Year
Spectrum analyzer	Agilent	E4407B	MY49510055	2017.01.16	1 Year
Receiver	R&S	ESCI	101165	2017.01.16	1 Year
Bilog Antenna	SCHWARZBECK	VULB 9168	9168-438	2018.01.18	2 Year
Horn Antenna	SCHWARZBECK	BBHA 9120 D	BBHA 9120 D(1201)	2017.01.20	2 Year
Horn Antenna	SCHWARZBECK	BBHA 9170	BBHA 9170 D(1432)	2017.01.20	2 Year
Active Loop Antenna	Beijing Daze	ZN30900A	SEL0097	2017.01.16	1 Year
Cable	Resenberger	SUCOFLEX 104	MY6562/4	2017.01.16	1 Year
Cable	Resenberger	SUCOFLEX 104	309972/4	2017.01.16	1 Year
Cable	Resenberger	SUCOFLEX 104	329112/4	2017.01.16	1 Year
Pre-amplifier	Agilent	8449B	3008A02664	2017.01.18	1 Year
Pre-amplifier	HP	HP8347A	2834A00455	2017.01.18	1 Year

Note: The temporary antenna connector is soldered on the PCB board in order to perform conducted tests and this temporary antenna connector is listed in the equipment list.

Equipment	Manufacture	Model No.	Serial No.	Test Location	Frequency Rang
Cable	Resenberger	SUCOFLEX 104	309972/4	Radiation	9KHz-2GHz
Cable	Resenberger	SUCOFLEX 104	329112/4	Radiation	1GHz-26.5G Hz

Note: For the relevant Conducted Measurement, the temporary antenna connector is used during the measurement.
Antenna Connector Impedance: 50 Ω , Cable Loss: 1.0 dB

3 Test Procedure

POWER LINE CONDUCTED INTERFERENCE: The test procedure used was ANSI Standard C63.10-2013 using a 50 u H LISN. Both Lines were observed. The bandwidth of the receiver was 10kHz with an appropriate sweep speed. The ambient temperature of the EUT was 25°C with a humidity of 58%.

RADIATION INTERFERENCE: The test procedure used was ANSI Standard C63.10-2013 using a ANRITSU spectrum analyzer with a pre-selector. The analyzer was calibrated in dB above a micro volt at the output of the antenna. The resolution bandwidth was 100kHz and the video bandwidth was 300 kHz up to 1 GHz and 1 MHz with a video BW of 3MHz above 1 GHz. The ambient temperature of the EUT was 25°C with a humidity of 58%.

FORMULA OF CONVERSION FACTORS: The Field Strength at 3m was established by adding the meter reading of the spectrum analyzer (which is set to read in units of dBuV) to the antenna correction factor supplied by the antenna manufacturer and cable loss. The antenna correction factors and cable loss are stated in terms of dB. The gain of the Pre-selector was accounted for in the Spectrum Analyzer Meter Reading.

Example:

Freq (MHz) METER READING + ACF + CABLE = FS

33.20 dBuV + 10.36 dB + 0.9 dB= 44.46 dBuV/m @ 3m

ANSI STANDARD C63.10-2013 10.1.7 MEASUREMENT PROCEDURES: The EUT was placed on a table 80 cm high and with dimensions of 1m by 1.5m. The EUT was placed in the center of the table (1.5m side). The table used for radiated measurements is capable of continuous rotation. When an emission was found, the table was rotated to produce the maximum signal strength. At this point, the antenna was raised and lowered from 1m to 4m. The antenna was placed in both the horizontal and vertical planes. The situation was similar for the conducted measurement except that the table did not rotate. The EUT was setup as described in ANSI Standard C63.10-2013 10.1.7 with the EUT 40 cm from the vertical ground wall.

4 Summary of Measurement

4.1 Summary of test result

Test Item	Test Requirement	Standard Paragraph	Result
Spurious Emission	FCC PART 15: 2016	Section 15.249&15.209	Compliance
Conduction Emission	FCC PART 15: 2016	Section 15.207	N/A
Occupied bandwidth	FCC PART 15: 2016	Section 15.215	Compliance
Band edge Requirement	FCC PART 15: 2016	Section 15.249	Compliance
Antenna Requirement	FCC PART 15: 2016	Section 15.203	Compliance

Note: The EUT has been tested as an independent unit. And Continual Transmitting in maximum power.

4.2 Test connection

EUT was placed on a turn table, which is 0.8 meter high above ground for below 1GHz, 1.5 meter high above ground for above 1GHz.

TX Mode:

EUT

4.3 Assistant equipment used for test

Description	:	N/A
Manufacturer	:	N/A
Model No.	:	N/A

4.4 Test mode

Tested mode, channel information		
Mode	Channel	Frequency (MHz)
GFSK	Low :CH1	2402
	Middle: CH40	2441
	High: CH79	2480
Note: New battery is used during all test		

Channel List

Channel No.	Frequency (MHz)	Channel No.	Frequency (MHz)	Channel No.	Frequency (MHz)
1	2402	39	2440	77	2478
2	2403	40	2441	78	2479
3	2404	41	2442	79	2480
...		

4.5 Test Conditions

Temperature range	21-25 °C
Humidity range	40-75%
Pressure range	86-106kPa

4.6 Measurement Uncertainty (95% confidence levels, k=2)

Item	MU	Remark
Uncertainty for Power point Conducted Emissions Test	2.71dB	
Uncertainty for Radiation Emission test in 3m chamber (below 30MHz)	2.13 dB	Polarize: V
	2.57dB	Polarize: H
Uncertainty for Radiation Emission test in 3m chamber (30MHz to 1GHz)	3.90 dB	Polarize: V
	3.92dB	Polarize: H
Uncertainty for Radiation Emission test in 3m chamber (1GHz to 25GHz)	4.26 dB	Polarize: H
	4.28 dB	Polarize: V
Uncertainty for radio frequency	1×10^{-9}	
Uncertainty for DC and low frequency voltages	0.06%	

5 Spurious Emission

5.1 Radiation Emission

5.2 Radiation Emission Limits(15.209&249)

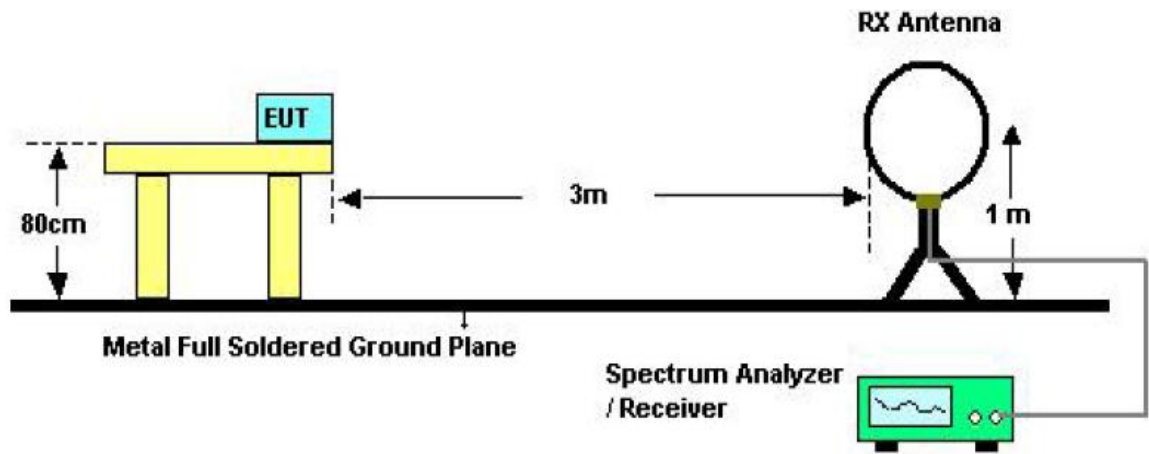
Frequency (MHz)	Field Strength Limits at 3 metres (watts, e.i.r.p.)		
	uV/m	dB uV/m	Measurement distance(m)
0.009-0.490	2400/F(kHz)	XX	300
0.490-1.705	24000/F(kHz)	XX	30
1.705-30	30	29.5	30
30~88	100(3nW)	40	3
88~216	150(6.8nW)	43.5	3
216~960	200(12nW)	46	3
Above960	500(75nW)	54	3
Carrier frequency		93.97(AV)	3
Carrier frequency		113.97(PK)	3

NOTE:

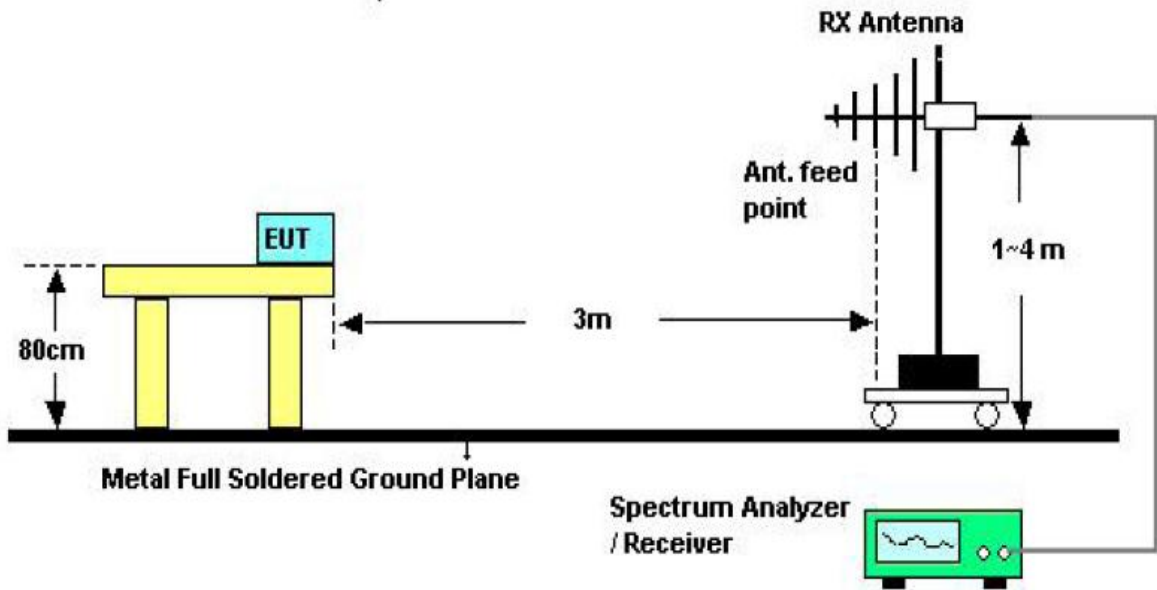
- a) The tighter limit applies at the band edges.
- b) Emission Level(dB uV/m)=20log Emission Level(uV /m)

5.3 Test Setup

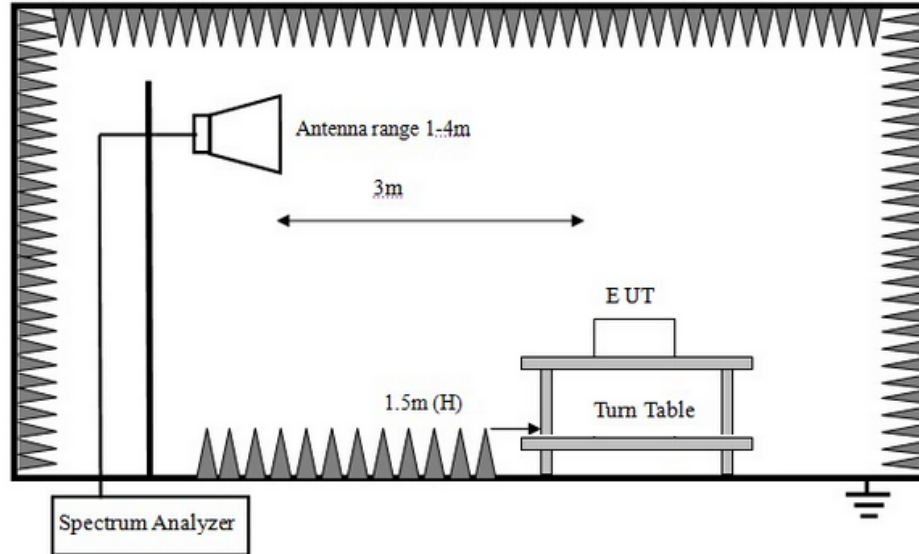
See the next page



Below 30MHz Test Setup



Above 30MHz Test Setup



Above 1GHz Test Setup

Note: For harmonic emissions test a appropriate high pass filter was inserted in the input port of AMP.

5.4 Test Procedure

- a) The measuring distance of 3m shall be used for measurements at frequency up to 1GHz and above 1GHz, The EUT was placed on a rotating 0.8 m high above ground for below 1GHz and 1.5m high for above1GHz testing, The table was rotated 360 degrees to determine the position of the highest radiation
- b) The Test antenna shall vary between 1m and 4m, Both Horizontal and Vertical antenna are set of make measurement.
- c) The initial step in collecting conducted emission data is a spectrum analyzer Peak detector mode pre-scanning the measurement frequency range. Significant Peaks are then marked. and then Qusia Peak Detector mode premeasured
- d) If Peak value comply with QP limit Below 1GHz.The EUT deemed to comply with QP limit. But the Peak value and average value both need to comply with applicable limit above 1GHz.
- e) For the actual test configuration, please see the test setup photo.
- f) Test for all x, y, z axes is performed and only the worst case of X xes was recorded in the test report.
- g) For the radiated emission test above 1GHz:
Place the measurement antenna away from each area of the EUT determined to be a source of emissions at the specified measurement distance, while keeping the measurement antenna aimed at the source of emissions at each frequency of significant emissions, with polarization oriented for maximum response. The measurement antenna may have to be higher or lower than the EUT, depending on the radiation pattern of the emission and staying aimed at the emission source for receiving the maximum signal. The final measurement antenna elevation shall be that which maximizes the emissions. The measurement antenna elevation for maximum emissions shall be restricted to a range of heights of from 1 m to 4 m above the ground or reference ground plane.

5.5 Test Equipment Setting For emission test Result.

9KHz~150KHz	RBW 200Hz	VBW1KHz
150KHz~30MHz	RBW 9KHz	VBW 30KHz
30MHz~1GHz	RBW 120KHz	VBW 300KHz
Above 1GHz	RBW 1MHz	VBW 3MHz

5.6 Test Condition

Continual Transmitting in maximum power.

5.7 Test Result

We have scanned the 10th harmonic from 9KHz to the EUT.
Detailed information please see the following page.

From 9KHz to 30MHz: Conclusion: PASS

Note: The amplitude of spurious emissions which are attenuated by more than 20dB below the permissible value has no need to be reported.

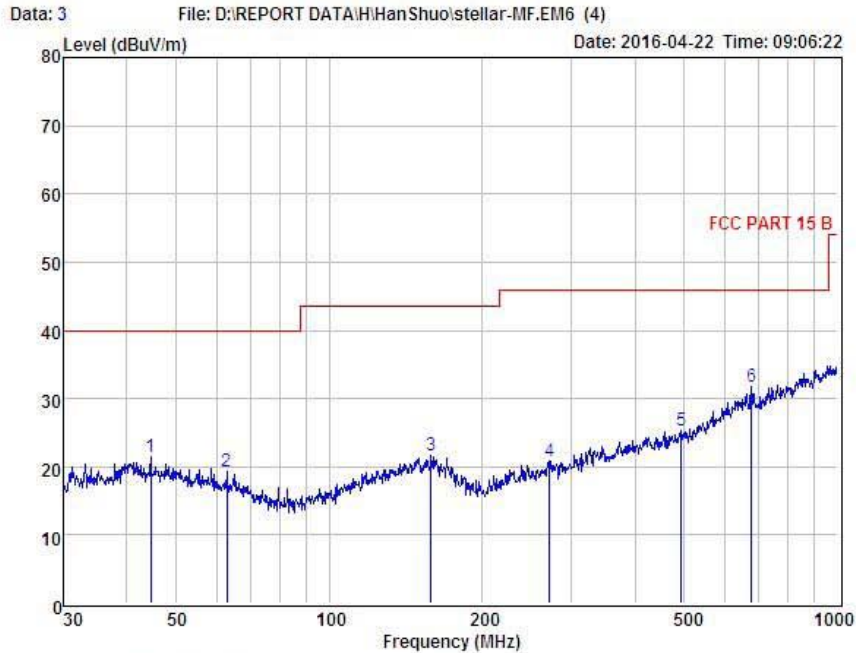
Remark: Only show the test data of the worst Channel in this report.

From 30MHz to 1000MHz: Conclusion: PASS

Below 1GHz



Shenzhen Alpha Product Testing Co., Ltd
 Building B, East Area of Nanchang Second Industrial Zone,
 Gushu 2nd Road, Bao'an District, Shenzhen 518126, P. R. China
 Tel: +86-755-29766001 FAX: +86-755-86375565
 Website: http://www.a-lab.cn Email: service@a-lab.cn



Condition : FCC PART 15 B 3m POL: VERTICAL
 EUT : Electronic shelf label
 Model No : stellar-MF
 Test Mode : TX 2402MHz
 Power : DC 3.6V
 Test Engineer : Reak
 Remark :
 Temp : 24.2°C
 Hum : 54%

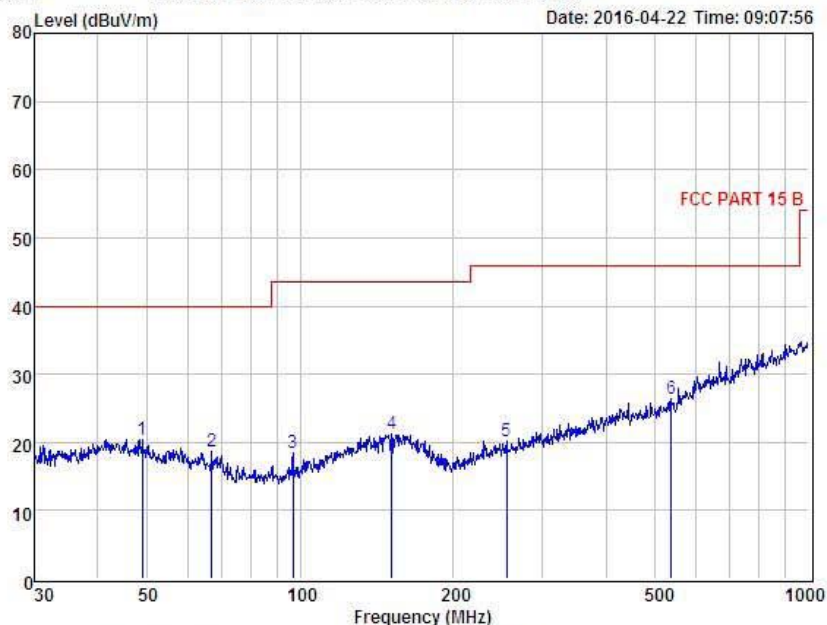
Item	Freq MHz	Read Level dBuV	Antenna Factor dB	Preamp Factor dB	Cable Loss dB	Level dBuV	Limit dBuV	Margin dBuV	Remark
1	44.59	37.48	13.79	29.96	0.03	21.34	40.00	-18.66	Peak
2	62.87	37.78	11.98	30.72	0.21	19.25	40.00	-20.75	Peak
3	158.67	36.33	14.14	29.17	0.41	21.71	43.50	-21.79	Peak
4	271.32	36.11	12.15	28.12	0.67	20.81	46.00	-25.19	Peak
5	492.47	35.05	16.43	27.19	1.06	25.35	46.00	-20.65	Peak
6	677.58	36.78	19.42	25.77	1.34	31.77	46.00	-14.23	Peak

Remark: Level = Read Level + Antenna Factor - Preamp Factor + Cable Loss



Shenzhen Alpha Product Testing Co., Ltd
 Building B, East Area of Nanchang Second Industrial Zone,
 Gushu 2nd Road, Bao'an District, Shenzhen 518126, P.R. China
 Tel: +86-755-29766001 FAX: +86-755-86375565
 Website: http://www.a-lab.cn Email: service@a-lab.cn

Data: 4 File: D:\REPORT DATA\IHanShuo\stellar-MF.EM6 (4) Date: 2016-04-22 Time: 09:07:56



Condition : FCC PART 15 B 3m POL: HORIZONTAL
 EUT : Electronic shelf label
 Model No : stellar-MF
 Test Mode : TX 2402MHz
 Power : DC 3.6V
 Test Engineer : Reak
 Remark :
 Temp : 24.2°C
 Hum : 54%

Item	Freq MHz	Read Level dBuV	Antenna Factor dB	Preamp Factor dB	Cable Loss dB	Level dBuV	Limit dBuV	Margin dBuV	Remark
1	48.84	37.03	13.54	30.25	0.09	20.41	40.00	-19.59	Peak
2	66.97	37.46	11.21	30.39	0.28	18.56	40.00	-21.44	Peak
3	96.77	38.29	10.01	30.19	0.35	18.46	43.50	-25.04	Peak
4	151.60	36.17	14.16	29.41	0.42	21.34	43.50	-22.16	Peak
5	254.73	36.24	11.69	28.22	0.55	20.26	46.00	-25.74	Peak
6	537.59	35.29	17.16	27.02	1.00	26.43	46.00	-19.57	Peak

Remark: Level = Read Level + Antenna Factor - Preamp Factor + Cable Loss

Notes: Above is below 1GHz test data. This report only shall the worst case mode for TX 2402MHz.

Radiated Emissions Result of Inside band and out of band

1GHz—25GHz Radiated emission Test result									
EUT: Electronic shelf label					M/N: Stellar-MF				
Power: DC 3.6V From battery									
Test date: 2016-04-24 Test site: 3m Chamber Tested by: Reak Yang									
Test mode: 2402MHz									
Antenna polarity: Vertical									
No	Freq (MHz)	Read Level (dBUV/m)	Antenna Factor (dB/m)	Cable loss(dB)	Amp Factor (dB)	Result (dBUV/m)	Limit (dBUV/m)	Margin (dB)	Remark
1	2402	90.35	27.61	3.94	34.97	86.93	114	27.07	PK
2	2402	83.17	27.61	3.94	34.97	79.75	94	14.25	AV
3	4804	60.28	31.29	5.70	34.19	63.08	74	10.92	PK
4	4804	45.66	31.29	5.70	34.19	48.46	54	5.54	AV
5	2400	55.12	27.62	3.94	34.97	51.71	74	22.29	PK
6	2400	41.31	27.62	3.94	34.97	37.90	54	16.10	AV
	/								
Antenna Polarity: Horizontal									
1	2402	88.33	27.61	3.94	34.97	84.91	114	29.09	PK
2	2402	81.72	27.61	3.94	34.97	78.30	94	15.70	AV
3	4804	58.14	31.29	5.70	34.19	60.94	74	13.06	PK
4	4804	43.26	31.29	5.70	34.19	46.06	54	7.94	AV
5	2400	52.78	27.62	3.94	34.97	49.37	74	24.63	PK
6	2400	38.36	27.62	3.94	34.97	34.95	54	19.05	AV
	/	/							
Note:									
1, Measuring frequency from 1GHz to 25GHz									
2, Spectrum Set for PK measure: RBW=1MHz, VBW=1MHz, Sweep time=Auto, Detector: PK									
2, Spectrum Set for AV measure: RBW=1MHz, VBW=3MHz, Sweep time=Auto, Detector: RMS									
3, Result = Read level + Antenna factor + cable loss - Amp factor									
4, All the other emissions not reported were too low to read and deemed to comply with FCC limit.									

EUT: Electronic shelf label M/N: Stellar-MF									
Power: DC 3.6V From battery									
Test date: 2016-04-24 Test site: 3m Chamber Tested by: Reak Yang									
Test mode: 2441MHz									
Antenna polarity: Vertical									
No	Freq (MHz)	Read Level (dBuV/m)	Antenna Factor (dB/m)	Cable loss(dB)	Amp Factor (dB)	Result (dBuV/m)	Limit (dBuV/m)	Margin (dB)	Remark
1	2441	89.72	27.60	3.97	34.97	86.32	114	27.68	PK
2	2441	82.13	27.60	3.97	34.97	78.73	94	15.27	AV
3	4882	56.37	31.38	5.75	34.14	59.36	74	14.64	PK
4	4882	39.24	31.38	5.75	34.14	42.23	54	11.77	AV
	/	/							
Antenna Polarity: Horizontal									
1	2441	87.46	27.60	3.97	34.97	84.06	114	29.94	PK
2	2441	80.01	27.60	3.97	34.97	76.61	94	17.39	AV
3	4882	54.42	31.38	5.75	34.14	57.41	74	16.59	PK
4	4882	36.79	31.38	5.75	34.14	39.78	54	14.22	AV
	/	/							
Note:									
1, Measuring frequency from 1GHz to 25GHz									
2,Spectrum Set for PK measure: RBW=1MHz, VBW=1MHz, Sweep time=Auto, Detector: PK									
2,Spectrum Set for AV measure: RBW=1MHz, VBW=3MHz, Sweep time=Auto, Detector: RMS									
3, Result = Read level + Antenna factor + cable loss-Amp factor									
4, All the other emissions not reported were too low to read and deemed to comply with FCC limit.									

EUT: Electronic shelf label M/N: Stellar-MF									
Power: DC 3.6V From battery									
Test date: 2016-04-24 Test site: 3m Chamber Tested by: Reak Yang									
Test mode: 2480MHz									
Antenna polarity: Vertical									
No	Freq (MHz)	Read Level (dBuV/m)	Antenna Factor (dB/m)	Cable loss (dB)	Amp Factor (dB)	Result (dBuV/m)	Limit (dBuV/m)	Margin (dB)	Remark
1	2480	89.45	27.59	4.00	34.97	86.07	114	27.93	PK
2	2480	81.72	27.59	4.00	34.97	78.34	94	15.66	AV
3	4960	57.51	31.43	5.79	34.12	60.61	74	13.39	PK
4	4960	41.97	31.43	5.79	34.12	45.07	54	8.93	AV
5	2483.5	50.88	27.59	4.00	34.97	47.50	74	26.50	PK
6	2483.5	35.43	27.59	4.00	34.97	32.05	54	21.95	AV
	/	/							
Antenna Polarity: Horizontal									
1	2480	87.07	27.59	4.00	34.97	83.69	114	30.31	PK
2	2480	79.14	27.59	4.00	34.97	75.76	94	18.24	AV
3	4960	55.19	31.43	5.79	34.12	58.29	74	15.71	PK
4	4960	39.43	31.43	5.79	34.12	42.53	54	11.47	AV
5	2483.5	48.75	27.59	4.00	34.97	45.37	74	28.63	PK
6	2483.5	33.86	27.59	4.00	34.97	30.48	54	23.52	AV
	/	/							
Note:									
1, Measuring frequency from 1GHz to 25GHz									
2, Spectrum Set for PK measure: RBW=1MHz, VBW=1MHz, Sweep time=Auto, Detector: PK									
2,Spectrum Set for AV measure: RBW=1MHz, VBW=3MHz, Sweep time=Auto, Detector: RMS									
3, Result = Read level + Antenna factor + cable loss-Amp factor									
4, All the other emissions not reported were too low to read and deemed to comply with FCC limit.									

6 POWER LINE CONDUCTED EMISSION

6.1 Conducted Emission Limits(15.207)

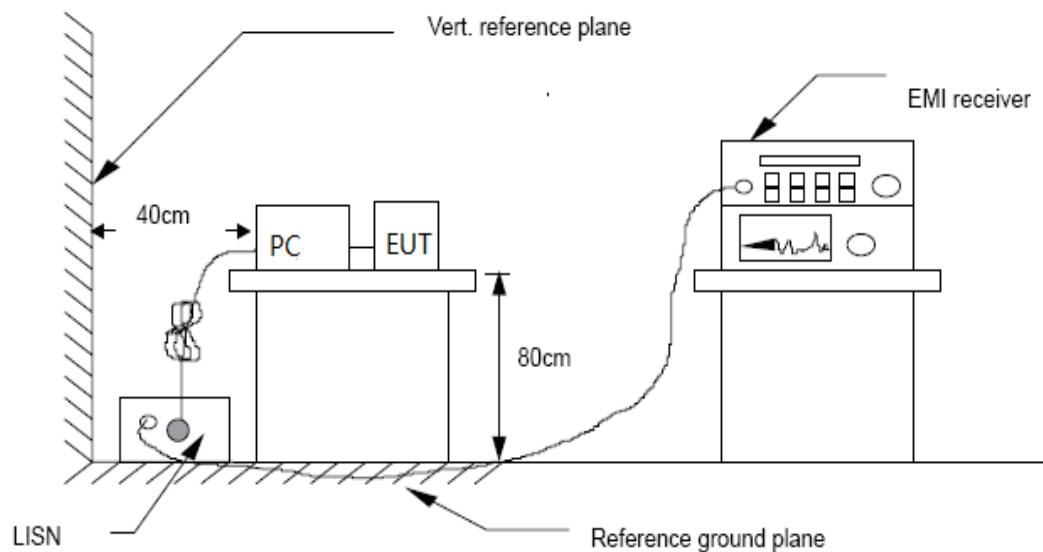
Frequency MHz	Limits dB(μ V)	
	Quasi-peak Level	Average Level
0.15 -0.50	66 -56*	56 - 46*
0.50 -5.00	56	46
5.00 -30.00	60	50

Notes: 1. *Decreasing linearly with logarithm of frequency.

2. The lower limit shall apply at the transition frequencies.

3. The limit decreases in line with the logarithm of the frequency in the range of 0.15 to 0.50 MHz.

6.2 Test Setup



6.3 Test Procedure

The EUT is put on the plane 0.8m high above the ground by insulating support and is connected to the power mains through a line impedance stabilization network (L.I.S.N.). This provides a 50ohm coupling impedance for the EUT system. Please refer the block diagram of the test setup and photographs. Both sides of AC lines are checked to find out the maximum conducted emission. In order to find the maximum emission levels, the relative positions of equipment and all of the interface cables shall be changed according to ANSI C63.10-2013 on Conducted Emission Measurement. The bandwidth of test receiver (R & S ESCS30) is set at 9 kHz.

6.4 Test Results

Not apply to battery operated products.

7 Bandwidth

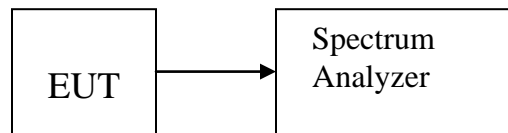
7.1 Test limit

Please refer section 15.215

7.2 Method of measurement

- a) The bandwidth is measured at an amplitude level reduced 20dB from the reference level. The reference level is the level of the highest amplitude signal observed from the transmitter at the fundamental frequency. Once the reference level is established, the equipment is conditioned with typical modulating signal to produce the worst-case (i.e. the widest) bandwidth.
- b) The test receiver RBW set 30KHz, VBW set 100KHz, Sweep time set auto.

7.3 Test Setup



7.4 Test Results

PASS.

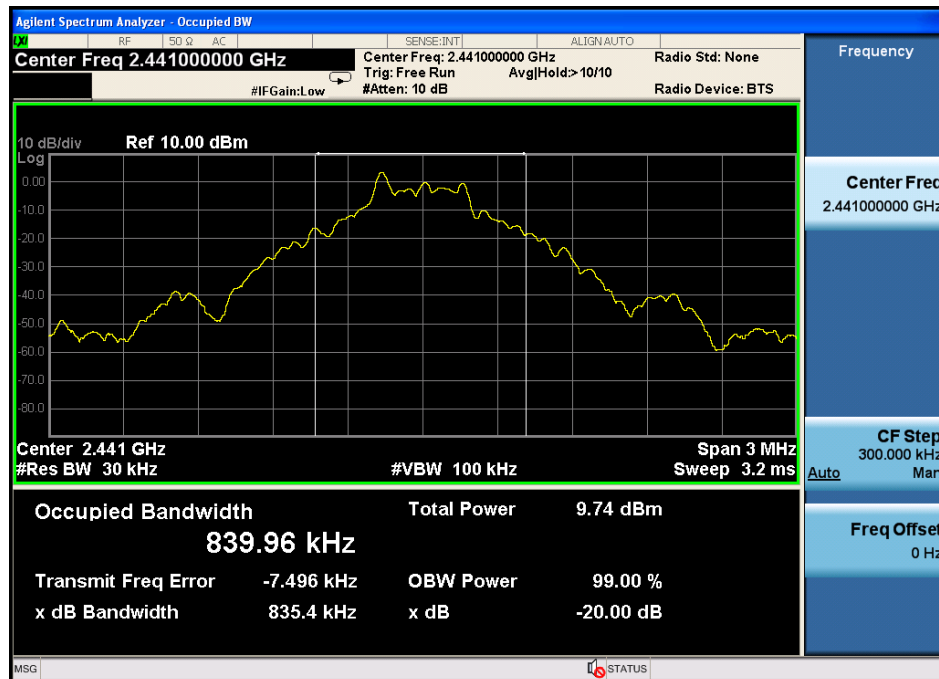
Detailed information please see the following page.

Channel	Frequency (MHz)	20dB Bandwidth (KHz)	Limit (KHz)	Result
CH1	2402	833.3	/	PASS
CH40	2441	835.4	/	PASS
CH79	2480	824.7	/	PASS

CH Low :



CH Mid :



CH High :



8 Antenna Requirement

8.1 Standard Requirement

An intentional radiator shall be designed to ensure that no antenna other than that furnished by the responsible party shall be used with the device. The use of a permanently attached antenna or of an antenna that uses a unique coupling to the intentional radiator shall be considered sufficient to comply with the provisions of this Section. The manufacturer may design the unit so that a broken antenna can be replaced by the user, but the use of a standard antenna jack or electrical connector is prohibited.

8.2 Antenna Connected Construction

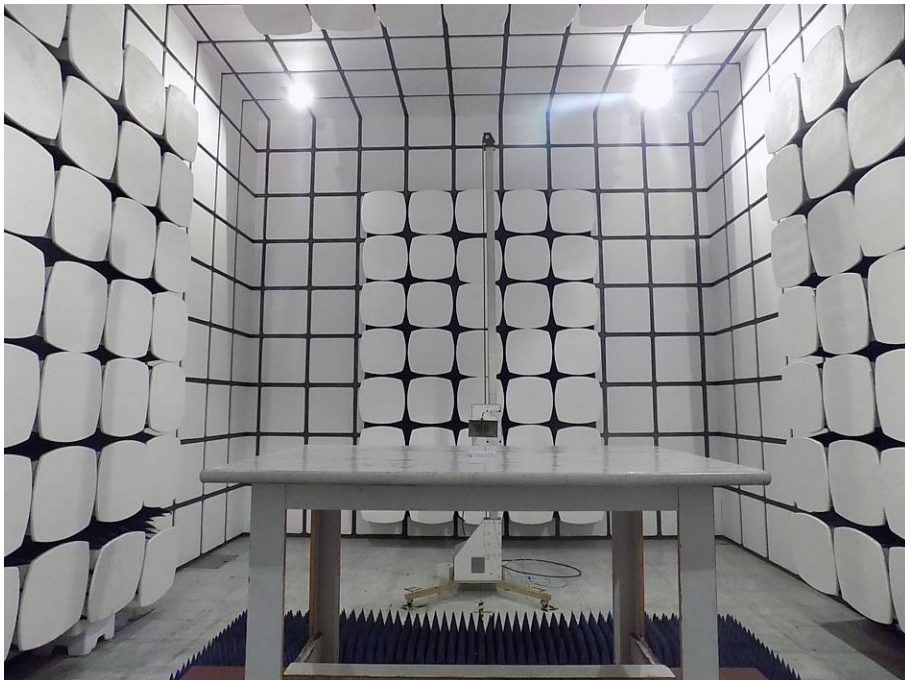
The directional gains of antenna used for transmitting is 2dBi, and is a PCB Antenna and no consideration of replacement. Please see EUT photo for details.

8.3 Result

The EUT antenna is PCB Antenna. It comply with the standard requirement.

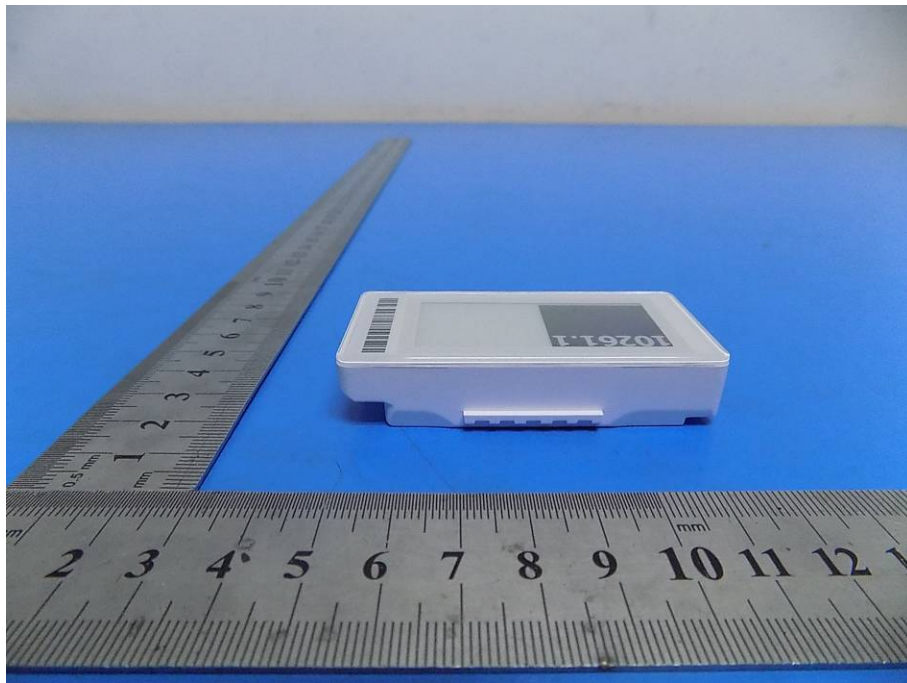
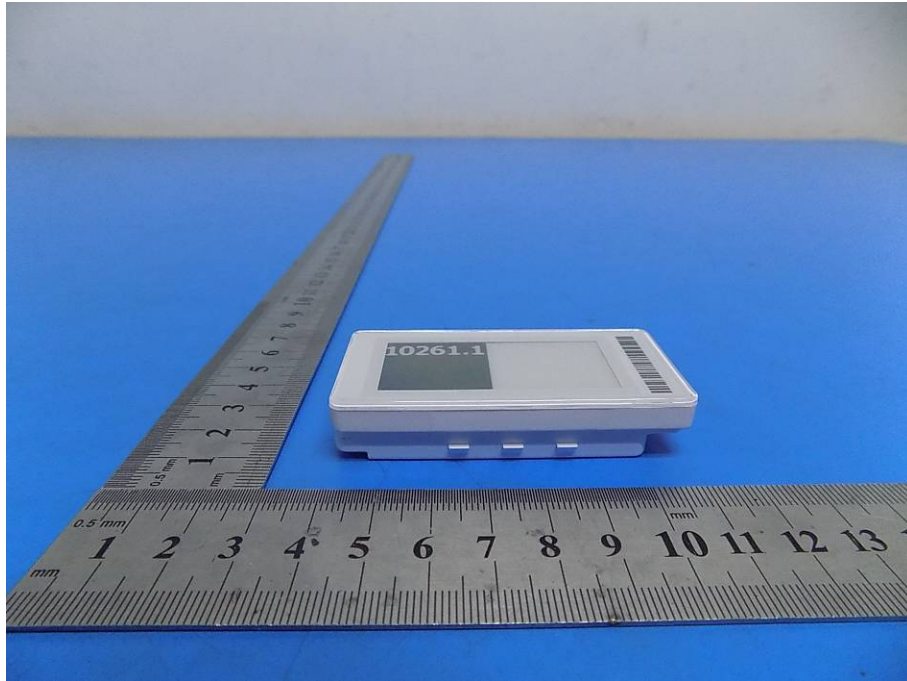
9 Photographs of Test Setup

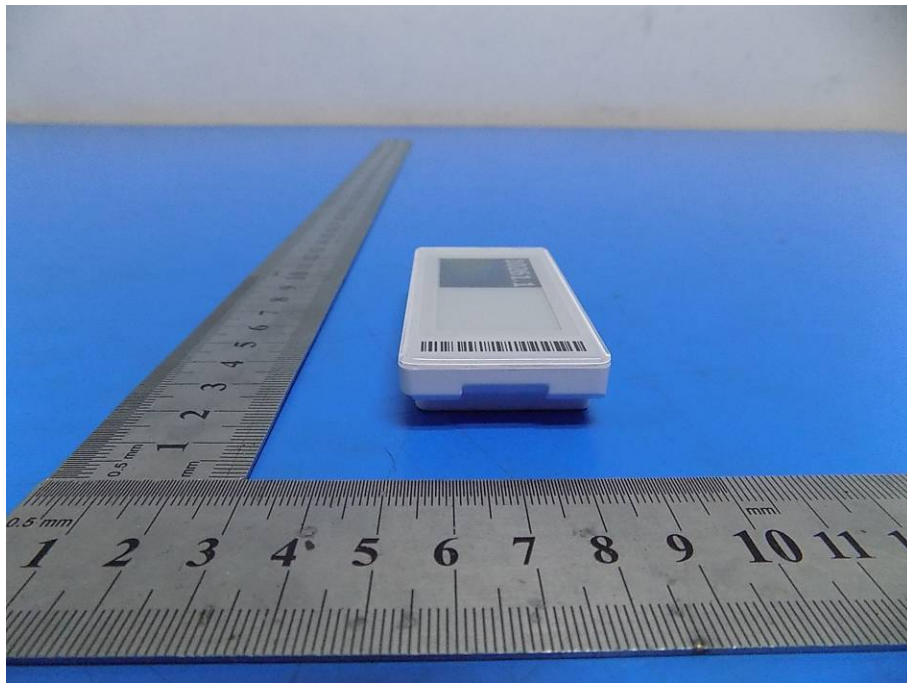
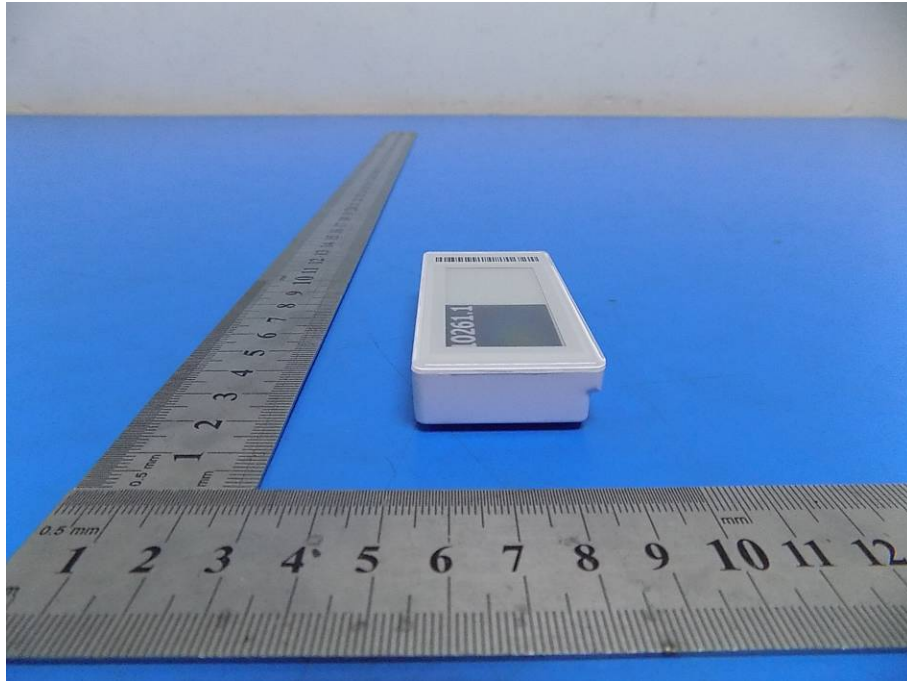
9.1 Photos of Radiated emission

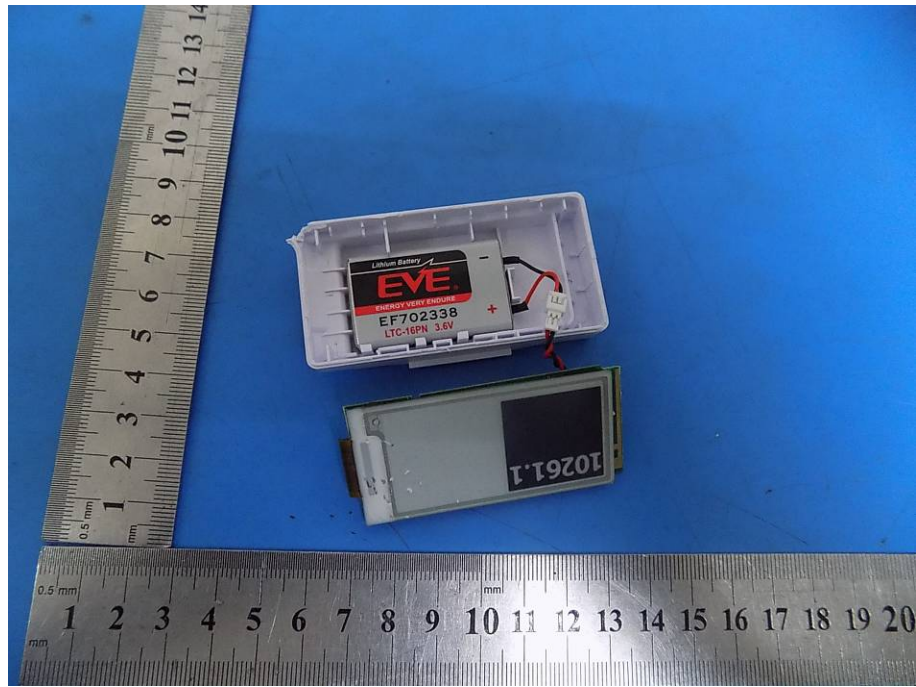
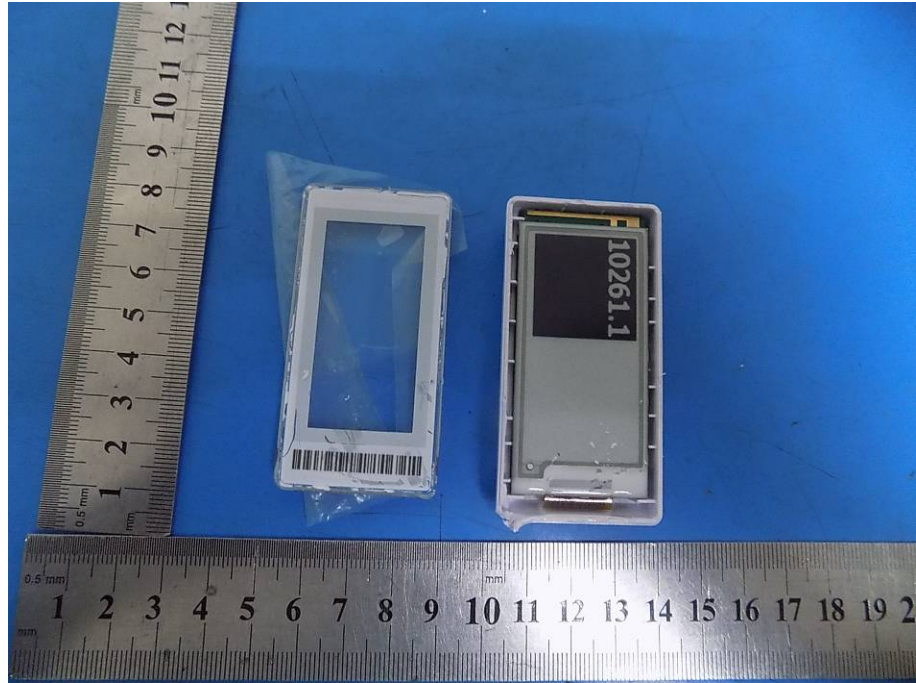


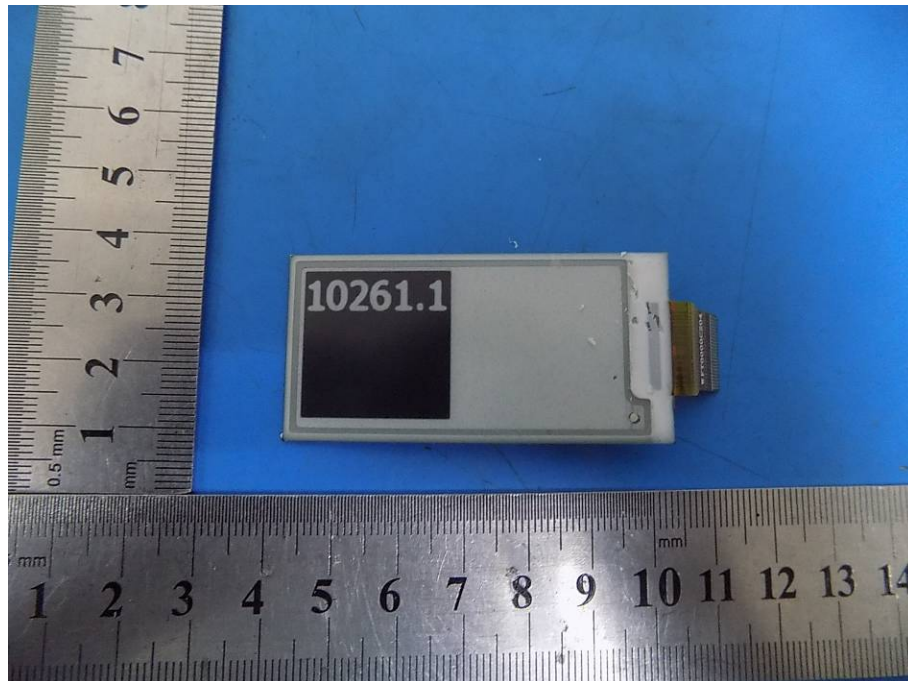
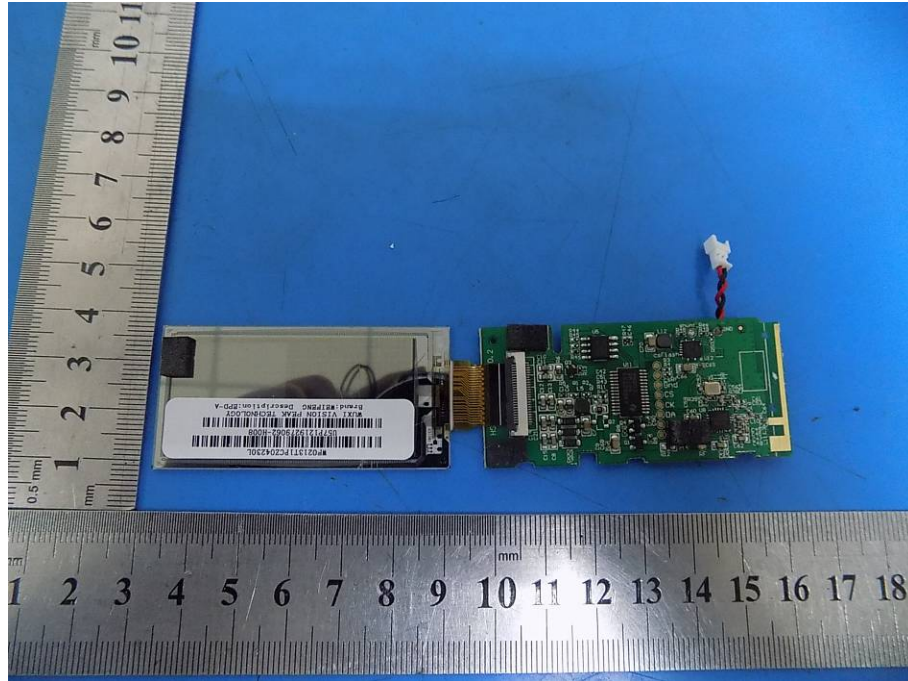
10 Photographs of EUT

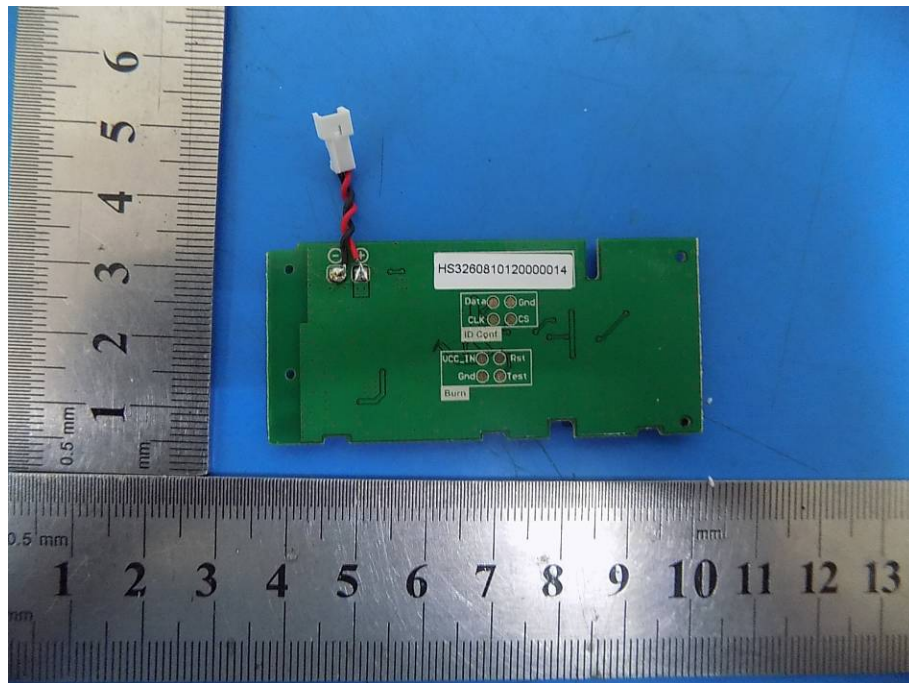
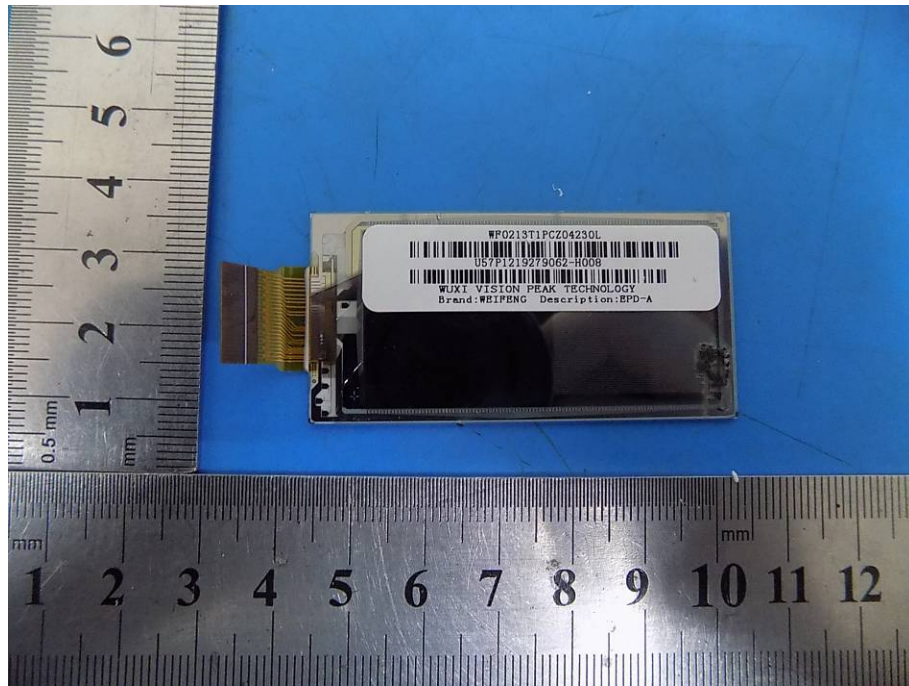


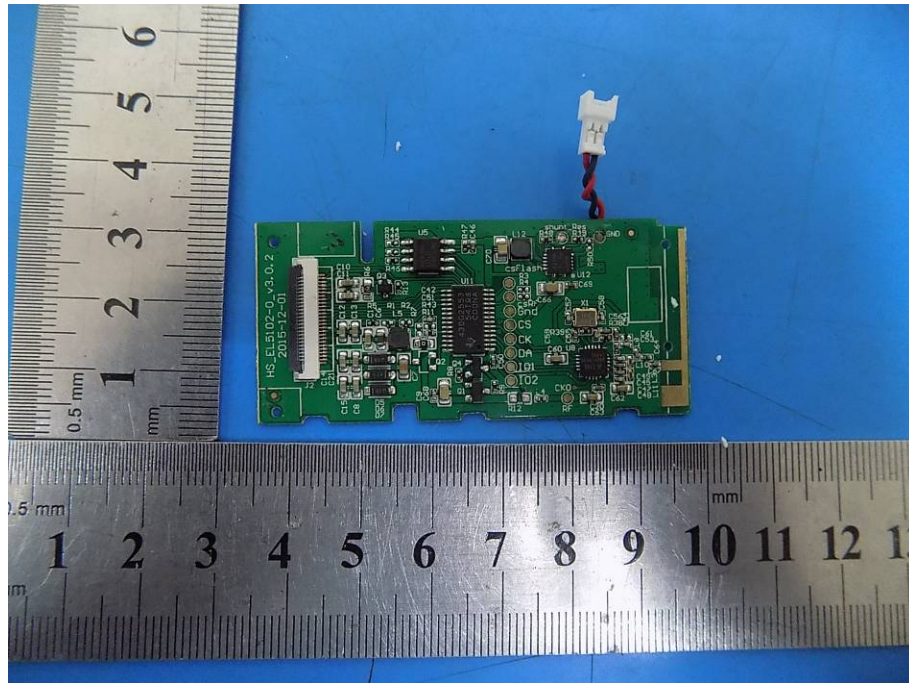
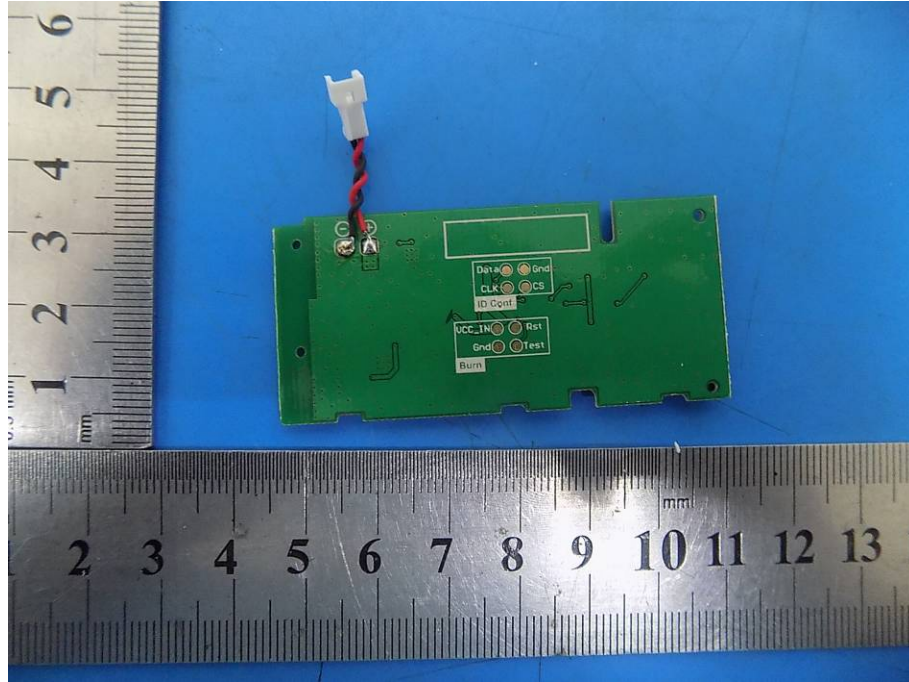












-----THE END OF REPORT-----