

FCC TEST REPORT

For

JEM ACCESSORIES INC.

HDMI wireless extender

Model No.: BWC17AV001, XHV1-1020-BLK

Prepared For : JEM ACCESSORIES INC.
Address : 32 Brunswick Avenue, Edison, New Jersey 08817, United States

Prepared By : Shenzhen Anbotek Compliance Laboratory Limited
Address : 1/F., Building 1, SEC Industrial Park, No.0409 Qianhai Road, Nanshan District, Shenzhen, Guangdong, China
Tel: (86) 755-26066544 Fax: (86) 755-26014772

Report Number : R0217080081W
Date of Test : Jul. 01~10, 2017
Date of Report : Jul. 10, 2017

Contents

1. General Information.....	4
1.1. Client Information.....	4
1.2. Description of Device (EUT).....	4
1.3. Auxiliary Equipment Used During Test.....	4
1.4. Description of Test Modes.....	5
1.5. List of channels.....	5
1.6. Description Of Test Setup.....	6
1.7. Test Equipment List.....	7
1.8. Measurement Uncertainty.....	7
1.9. Description of Test Facility.....	8
2. Summary of Test Results.....	9
3. Conducted Emission Test.....	10
3.1. Test Standard and Limit.....	10
3.2. Test Setup.....	10
3.3. Test Procedure.....	10
3.4. Test Data.....	10
4. Radiation Spurious Emission and Band Edge.....	15
4.1. Test Standard and Limit.....	15
4.2. Test Setup.....	16
4.3. Test Procedure.....	17
4.4. Test Data.....	17
5. Maximum Peak Output Power Test.....	24
5.1. Test Standard and Limit.....	24
5.2. Test Setup.....	24
5.3. Test Procedure.....	24
5.4. Test Data.....	24
6. Occupy Bandwidth Test.....	25
6.1. Test Standard.....	25
6.2. Test Setup.....	25
6.3. Test Procedure.....	25
6.4. Test Data.....	25
7. Power Spectral Density Test.....	30
7.1. Test Standard and Limit.....	30
7.2. Test Setup.....	30
7.3. Test Procedure.....	30
7.4. Test Data.....	30
8. Antenna Requirement.....	33
8.1. Test Standard and Requirement.....	33
8.2. Antenna Connected Construction.....	34
APPENDIX I -- TEST SETUP PHOTOGRAPH.....	35
APPENDIX II -- EXTERNAL PHOTOGRAPH.....	37
APPENDIX III -- INTERNAL PHOTOGRAPH.....	41

TEST REPORT

Applicant : JEM ACCESSORIES INC.
Manufacturer : JEM ACCESSORIES INC.
Product Name : HDMI wireless extender
Model No. : BWC17AV001, XHV1-1020-BLK
Trade Mark : Xtreme Cables ; Blackweb
Rating(s) : Input DC 5V 2A (Via adapter AC 100-240V, 50/60HZ, 0.3A)

Test Standard(s) : FCC Part15 Subpart E 2016, Paragraph 15.407
Test Method(s) : ANSI C63.10: 2013
KDB 789033 D02 General UNII Test Procedures New Rules v01r04

The device described above is tested by Shenzhen Anbotek Compliance Laboratory Limited to determine the maximum emission levels emanating from the device and the severe levels of the device can endure and its performance criterion. The measurement results are contained in this test report and Shenzhen Anbotek Compliance Laboratory Limited is assumed full of responsibility for the accuracy and completeness of these measurements. Also, this report shows that the EUT (Equipment Under Test) is technically compliant with the FCC Part 15 Subpart E requirements.

This report applies to above tested sample only and shall not be reproduced in part without written approval of Shenzhen Anbotek Compliance Laboratory Limited.

Date of Test : Jul. 01~10, 2017

Prepared by :



Winkey Wang

(Tested Engineer / Winkey Wang)

Reviewer :

Tangcy. T.

(Project Manager / Tangcy. T)

Approved & Authorized Signer :

Tom Chen

(Manager / Tom Chen)

1. General Information

1.1. Client Information

Applicant	:	JEM ACCESSORIES INC.
Address	:	32 Brunswick Avenue, Edison, New Jersey 08817, United States
Manufacturer	:	JEM ACCESSORIES INC.
Address	:	32 Brunswick Avenue, Edison, New Jersey 08817, United States

1.2. Description of Device (EUT)

Product Name	:	HDMI wireless extender	
Model No.	:	BWC17AV001, XHV1-1020-BLK (Note: All samples are the same except the model number and colour, so we prepare "BWC17AV001" for test only.)	
Trade Mark	:	Xtreme Cables, Blackweb	
Test Power Supply	:	AC 120V, 60Hz for adapter/AC 240V, 60Hz for adapter	
Product Description	:	Operation Frequency:	5745MHz~5825MHz
		Number of Channel:	5 Channels for 802.11ac(HT20)
		Modulation Type:	OFDM with BPSK/QPSK/16QAM/64QAM/ 256QAM for 802.11ac
		Antenna Type:	Rod antenna
		Antenna Gain(Peak):	3 dBi
Remark: 1) For a more detailed features description, please refer to the manufacturer's specifications or the User's Manual.			

1.3. Auxiliary Equipment Used During Test

Adapter	:	Model Number: NBS12E050200VU Input: 100-240V~50/60 Hz, 0.3A Output: 5.0V, 2.0A
---------	---	--

1.4. Description of Test Modes

To investigate the maximum EMI emission characteristics generated from EUT, the test system was pre-scanning tested based on the consideration of following EUT operation mode or test configuration mode which possibly have effect on EMI emission level. Each of these EUT operation mode(s) or test configuration mode(s) mentioned above was evaluated respectively.

Mode	Test channel	Frequency (MHz)
OFDM(ac20)	CH 149	5745MHz
	CH 157	5785MHz
	CH 165	5825MHz

Note:

1. The measurements are performed at the highest, middle, lowest available channels.
2. The EUT has been tested as an independent unit. And Continual Transmitting in maximum power.
3. For the relevant Conducted Measurement, the temporary antenna connector is used during the measurement. Antenna Connector Impedance: 50 Ω , Cable Loss: 1.0 dB
4. The EUT was programmed to be in continuously transmitting mode and the transmit duty cycle is more than 98%

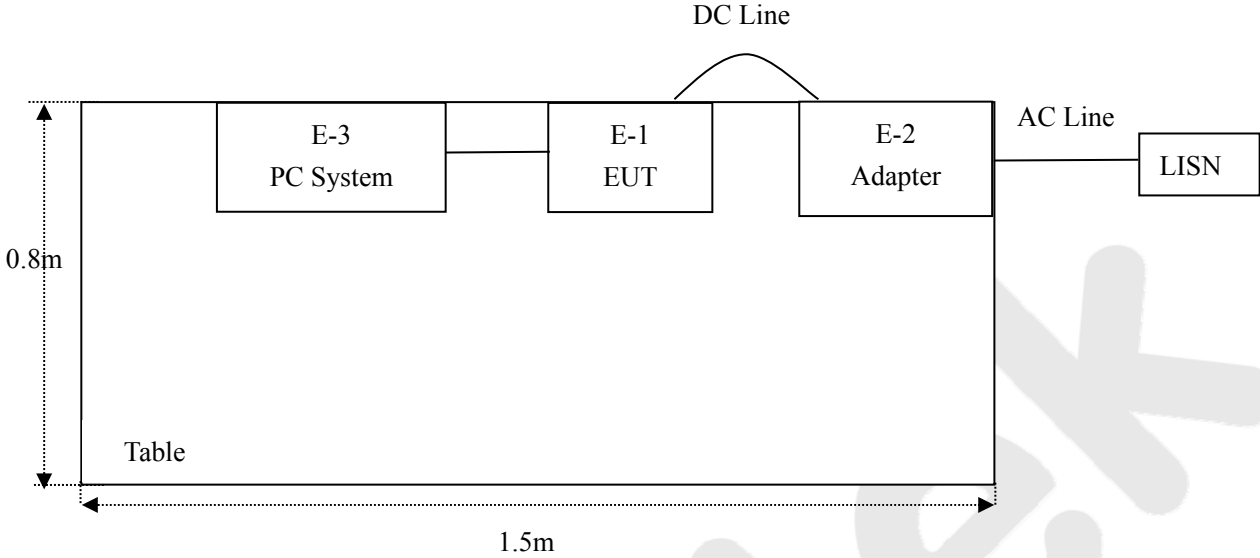
1.5. List of channels

802.11ac20

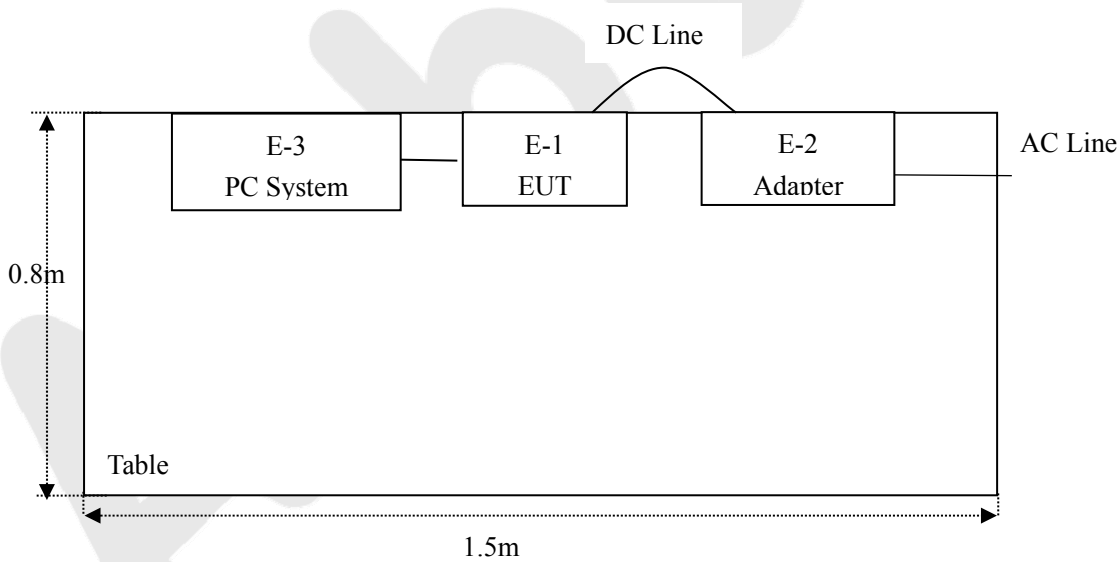
Channel	Freq. (MHz)	Channel	Freq. (MHz)
149	5745	153	5765
157	5785	161	5805
165	5825		

1.6. Description Of Test Setup

CE



RE



1.7. Test Equipment List

Item	Equipment	Manufacturer	Model No.	Serial No.	Last Cal.	Cal. Interval
1.	L.I.S.N. Artificial Mains Network	Rohde & Schwarz	ENV216	100055	May 27, 2017	1 Year
2.	EMI Test Receiver	Rohde & Schwarz	ESCI	100627	May 27, 2017	1 Year
3.	RF Switching Unit	Compliance Direction	RSU-M2	38303	May 27, 2017	1 Year
4.	Spectrum Analysis	Agilent	E4407B	US39390582	May 27, 2017	1 Year
5.	Preamplifier	SKET Electronic	BK1G18G30 D	KD17503	May 27, 2017	1 Year
6.	EMI Test Receiver	Rohde & Schwarz	ESPI	101604	May 27, 2017	1 Year
7.	Double Ridged Horn Antenna	Instruments corporation	GTH-0118	351600	May 31, 2017	1 Year
8.	Bilog Broadband Antenna	Schwarzbeck	VULB9163	VULB 9163-289	May 31, 2017	1 Year
9.	Loop Antenna	Schwarzbeck	HFH2-Z2	100047	Apr. 03, 2017	1 Year
10.	Pre-amplifier	SONOMA	310N	186860	May 27, 2017	1 Year
11.	EMI Test Software EZ-EMC	SHURPLE	N/A	N/A	N/A	N/A
12.	Power Sensor	DAER	RPR3006W	15I00041SN045	May 27, 2017	1 Year
13.	Power Sensor	DAER	RPR3006W	15I00041SN046	May 27, 2017	1 Year
14.	MXA Spectrum Analysis	Agilent	N9020A	MY51170037	May 27, 2017	1 Year
15.	MXG RF Vector Signal Generator	Agilent	N5182A	MY48180656	May 27, 2017	1 Year
16.	Signal Generator	Agilent	E4421B	MY41000743	May 27, 2017	1 Year
17.	DC Power supply	IVYTECH	IV6003	1601D6030007	May 26, 2017	1 Year
18.	TEMP&HUMI PROGRAMMABLE CHAMBER	Sertep	ZJ-HWHS80 B	ZJ-17042804	Mar. 03, 2017	1 Year

1.8. Measurement Uncertainty

Radiation Uncertainty	:	Ur = 4.1 dB (Horizontal)
		Ur = 4.3 dB (Vertical)
Conduction Uncertainty	:	Uc = 3.4dB

1.9. Description of Test Facility

The test facility is recognized, certified, or accredited by the following organizations:

FCC-Designation No.: CN5023

Shenzhen Anbotek Compliance Laboratory Limited, EMC Laboratory has been registered and fully described in a report filed with the (FCC) Federal Communications Commission. The acceptance letter from the FCC is maintained in our files. Designation CN5023, July 31, 2017.

ISED-Registration No.: 8058A-1

Shenzhen Anbotek Compliance Laboratory Limited, EMC Laboratory has been registered and fully described in a report filed with the (ISED) Innovation, Science and Economic Development Canada. The acceptance letter from the ISED is maintained in our files. Registration 8058A-1, June 13, 2016.

Test Location

All Emissions tests were performed at

Shenzhen Anbotek Compliance Laboratory Limited. at 1/F., Building 1, SEC Industrial Park, No.0409 Qianhai Road, Nanshan District, Shenzhen, Guangdong, China

2. Summary of Test Results

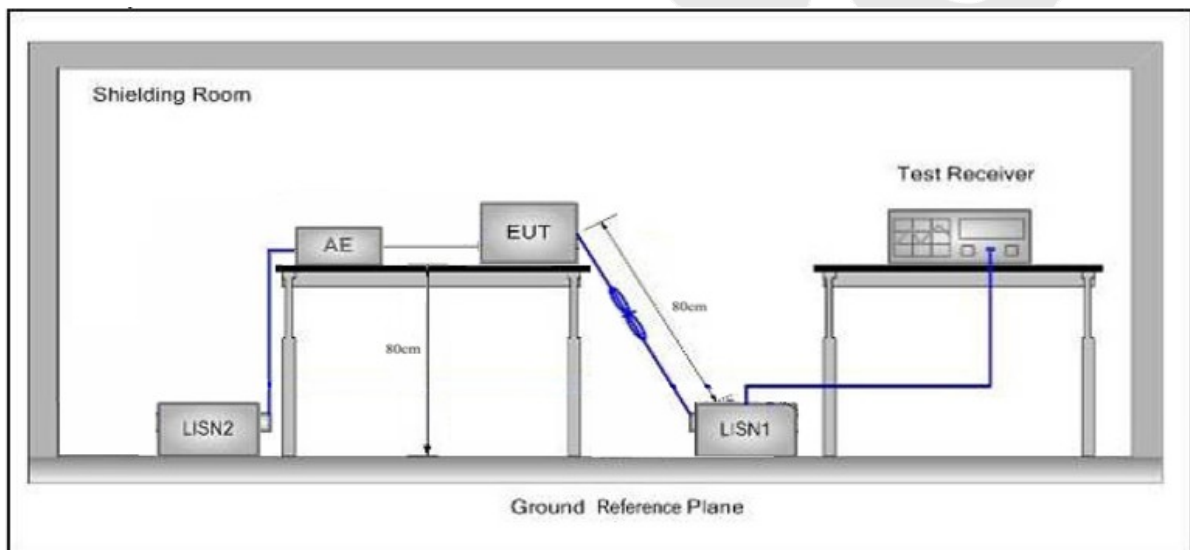
Standard	Test Type	Result
15.207 & 15.407	Conducted Emission	PASS
15.205/15.209	Spurious Emission	PASS
15.407(b)	Band Edge	PASS
15.407(a)(5)	Occupy Bandwidth	PASS
15.407(a)(1)(3)	Maximum Conducted Output Power	PASS
15.407(a)(1)(3)	Peak Power Spectral Density	PASS
15.203/15.407g	Antenna Requirement	PASS

3. Conducted Emission Test

3.1. Test Standard and Limit

Test Standard	FCC Part15 Section 15.207&15.407		
Test Limit	Frequency	Maximum RF Line Voltage (dBuV)	
		Quasi-peak Level	Average Level
	150kHz~500kHz	66 ~ 56 *	56 ~ 46 *
	500kHz~5MHz	56	46
	5MHz~30MHz	60	50
Remark: (1) *Decreasing linearly with logarithm of the frequency. (2) The lower limit shall apply at the transition frequency.			

3.2. Test Setup



3.3. Test Procedure

The EUT system is connected to the power mains through a line impedance stabilization network (L.I.S.N.). This provides a 50ohm coupling impedance for the EUT system. Please refer the block diagram of the test setup and photographs. Both sides of AC line are checked to find out the maximum conducted emission. In order to find the maximum emission levels, the relative positions of equipment and all of the interface cables shall be changed according to FCC ANSI C63.10-2013 on Conducted Emission Measurement.

The bandwidth of test receiver (ESCI) set at 9kHz.

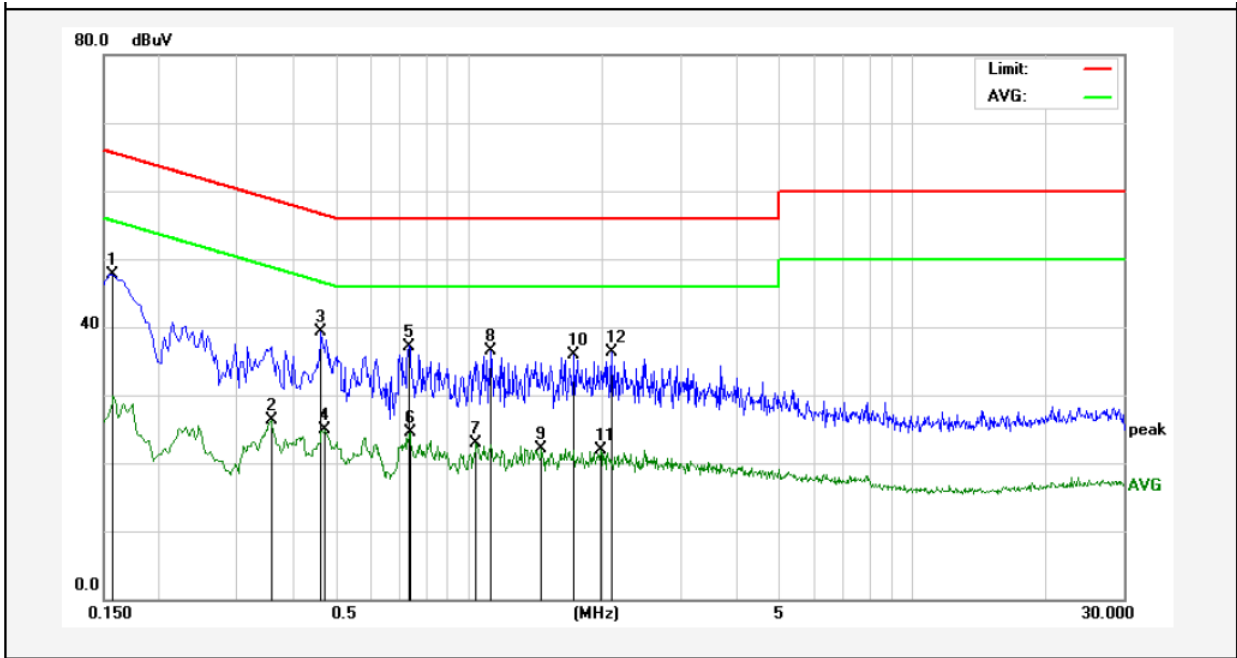
The frequency range from 150kHz to 30MHz is checked.

3.4. Test Data

Please to see the following pages

Conducted Emission Test Data

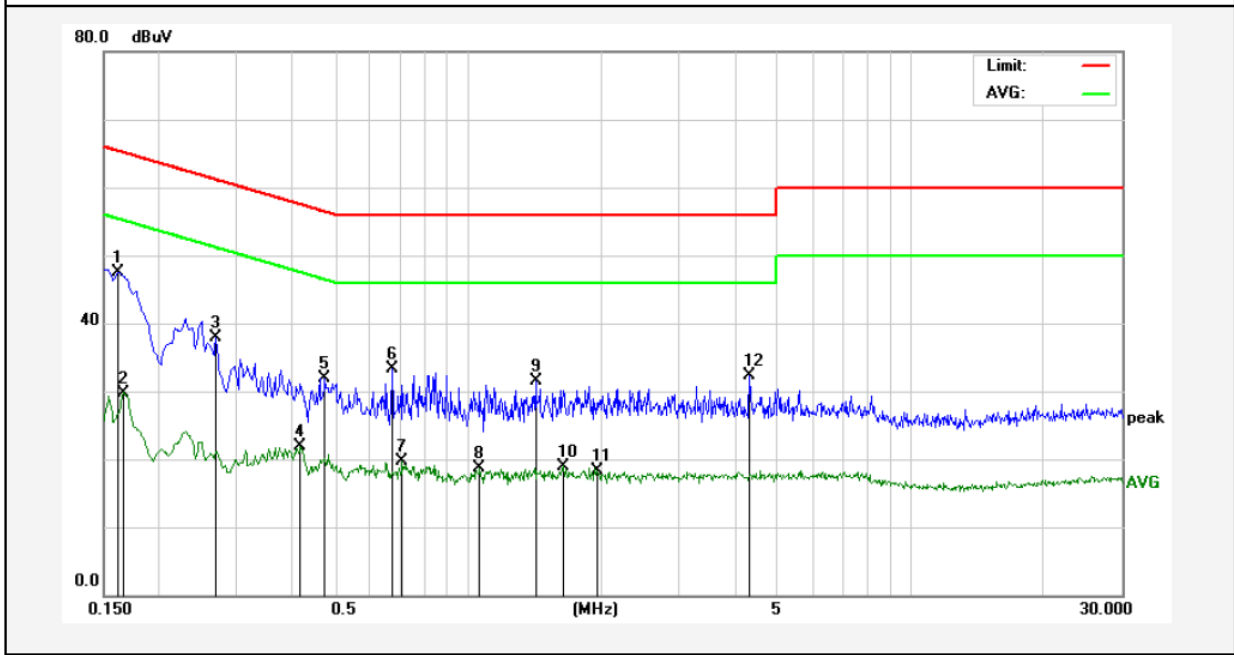
Test Site: 1# Shielded Room
 Operating Condition: Keeping TX mode
 Test Specification: AC 120V, 60Hz for adapter
 Comment: Live Line
 Tem.:25°C Hum.:50%



No.	Freq. (MHz)	Reading (dBuV)	Factor (dB)	Result (dBuV)	Limit dBuV	Over Limit (dB)	Detector	Remark
1	0.1580	27.82	19.90	47.72	65.56	-17.84	QP	
2	0.3580	6.44	19.92	26.36	48.77	-22.41	AVG	
3	0.4660	19.27	19.96	39.23	56.58	-17.35	QP	
4	0.4740	4.99	19.97	24.96	46.44	-21.48	AVG	
5	0.7340	17.15	20.05	37.20	56.00	-18.80	QP	
6	0.7380	4.37	20.05	24.42	46.00	-21.58	AVG	
7	1.0420	2.83	20.12	22.95	46.00	-23.05	AVG	
8	1.1180	16.47	20.12	36.59	56.00	-19.41	QP	
9	1.4580	2.00	20.13	22.13	46.00	-23.87	AVG	
10	1.7340	15.70	20.13	35.83	56.00	-20.17	QP	
11	1.9900	1.84	20.14	21.98	46.00	-24.02	AVG	
12	2.1020	16.12	20.14	36.26	56.00	-19.74	QP	

Conducted Emission Test Data

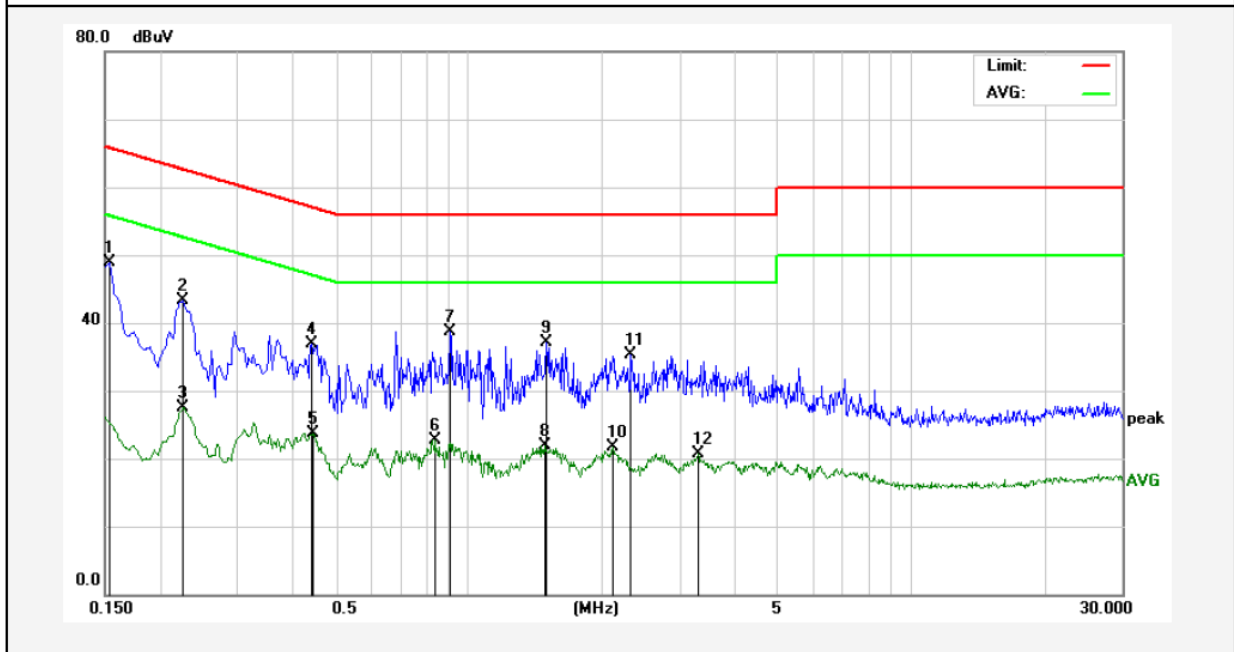
Test Site: 1# Shielded Room
 Operating Condition: Keeping TX mode
 Test Specification: AC 120V, 60Hz for adapter
 Comment: Neutral Line
 Tem.:25°C Hum.:50%



No.	Freq. (MHz)	Reading (dBuV)	Factor (dB)	Result (dBuV)	Limit dBuV	Over Limit (dB)	Detector	Remark
1	0.1620	27.68	19.90	47.58	65.36	-17.78	QP	
2	0.1660	9.90	19.90	29.80	55.15	-25.35	AVG	
3	0.2700	17.99	19.89	37.88	61.12	-23.24	QP	
4	0.4180	2.01	19.94	21.95	47.49	-25.54	AVG	
5	0.4740	12.01	19.97	31.98	56.44	-24.46	QP	
6	0.6740	13.30	20.03	33.33	56.00	-22.67	QP	
7	0.7100	-0.43	20.04	19.61	46.00	-26.39	AVG	
8	1.0620	-1.44	20.12	18.68	46.00	-27.32	AVG	
9	1.4220	11.42	20.13	31.55	56.00	-24.45	QP	
10	1.6420	-1.13	20.13	19.00	46.00	-27.00	AVG	
11	1.9660	-1.77	20.14	18.37	46.00	-27.63	AVG	
12	4.3340	12.10	20.19	32.29	56.00	-23.71	QP	

Conducted Emission Test Data

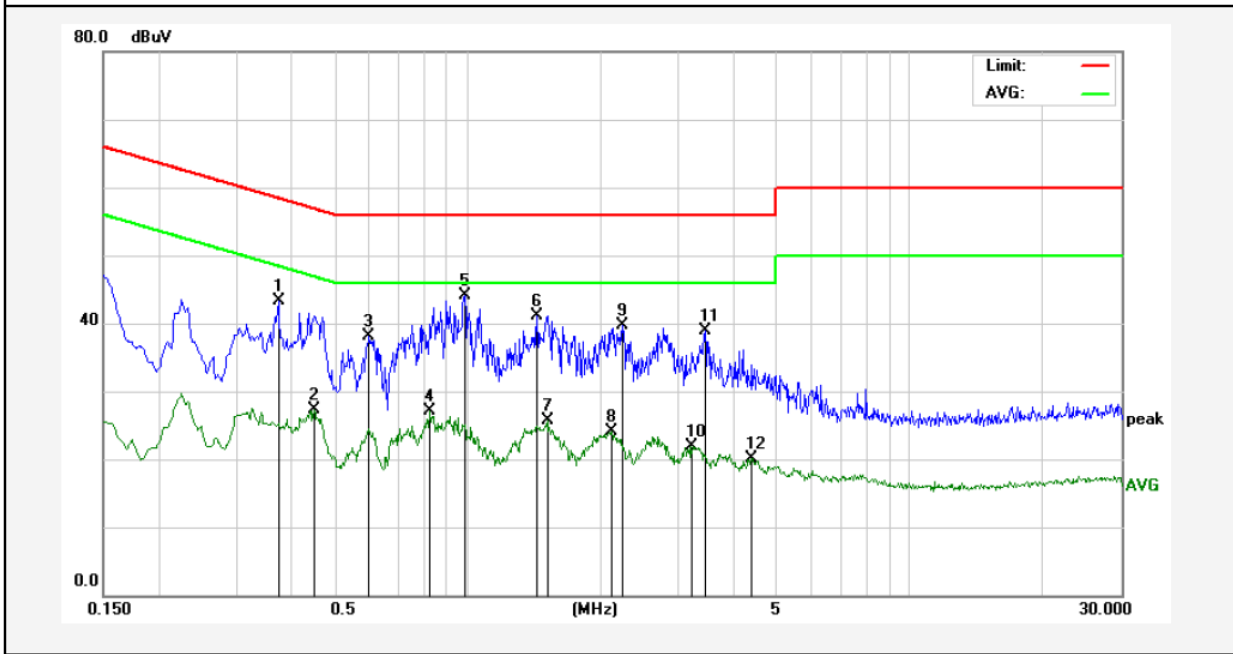
Test Site: 1# Shielded Room
 Operating Condition: Keeping TX mode
 Test Specification: AC 240V, 60Hz for adapter
 Comment: Live Line
 Tem.:25°C Hum.:50%



No.	Freq. (MHz)	Reading (dBuV)	Factor (dB)	Result (dBuV)	Limit dBuV	Over Limit (dB)	Detector	Remark
1	0.1539	29.00	19.90	48.90	65.78	-16.88	QP	
2	0.2260	23.43	19.89	43.32	62.59	-19.27	QP	
3	0.2260	7.68	19.89	27.57	52.59	-25.02	AVG	
4	0.4420	16.99	19.95	36.94	57.02	-20.08	QP	
5	0.4460	3.81	19.96	23.77	46.95	-23.18	AVG	
6	0.8380	2.66	20.08	22.74	46.00	-23.26	AVG	
7	0.9060	18.66	20.09	38.75	56.00	-17.25	QP	
8	1.4819	1.75	20.13	21.88	46.00	-24.12	AVG	
9	1.4980	17.06	20.13	37.19	56.00	-18.81	QP	
10	2.1140	1.50	20.14	21.64	46.00	-24.36	AVG	
11	2.3300	15.19	20.15	35.34	56.00	-20.66	QP	
12	3.2940	0.46	20.17	20.63	46.00	-25.37	AVG	

Conducted Emission Test Data

Test Site: 1# Shielded Room
 Operating Condition: Keeping TX mode
 Test Specification: AC 240V, 60Hz for adapter
 Comment: Neutral Line
 Tem.:25°C Hum.:50%



No.	Freq. (MHz)	Reading (dBuV)	Factor (dB)	Result (dBuV)	Limit dBuV	Over Limit (dB)	Detector	Remark
1	0.3740	23.32	19.92	43.24	58.41	-15.17	QP	
2	0.4500	7.39	19.96	27.35	46.87	-19.52	AVG	
3	0.5980	18.15	20.01	38.16	56.00	-17.84	QP	
4	0.8260	7.00	20.07	27.07	46.00	-18.93	AVG	
5	0.9860	23.94	20.12	44.06	56.00	-11.94	QP	
6	1.4380	20.96	20.13	41.09	56.00	-14.91	QP	
7	1.5140	5.52	20.13	25.65	46.00	-20.35	AVG	
8	2.1180	4.01	20.14	24.15	46.00	-21.85	AVG	
9	2.2420	19.64	20.14	39.78	56.00	-16.22	QP	
10	3.2060	1.82	20.16	21.98	46.00	-24.02	AVG	
11	3.4380	18.72	20.17	38.89	56.00	-17.11	QP	
12	4.3899	-0.02	20.19	20.17	46.00	-25.83	AVG	

4. Radiation Spurious Emission and Band Edge

4.1. Test Standard and Limit

Test Standard	FCC Part15 C Section 15.209, 15.205 and 15.407, KDB 789033 D02 General UNII Test Procedures New Rules v01r04
---------------	---

Unwanted spurious emissions fallen in restricted bands per FCC Part15.205 shall comply with the general field strength limits set forth in § 15.209 as below table,

Test Limit	Frequency (MHz)	Field strength (microvolt/meter)	Limit (dBuV/m)	Remark	Measurement distance (m)
	0.009MHz~0.490MHz	2400/F(kHz)	-	-	300
	0.490MHz-1.705MHz	24000/F(kHz)	-	-	30
	1.705MHz-30MHz	30	-	-	30
	30MHz~88MHz	100	40.0	Quasi-peak	3
	88MHz~216MHz	150	43.5	Quasi-peak	3
	216MHz~960MHz	200	46.0	Quasi-peak	3
	960MHz~1000MHz	500	54.0	Quasi-peak	3
	Above 1000MHz	500	54.0	Average	3

Remark:

- (1)The lower limit shall apply at the transition frequency.
- (2) 15.35(b), Unless otherwise specified, the limit on peak radio frequency emissions is 20dB above the maximum permitted average emission limit applicable to the equipment under test. This peak limit applies to the total peak emission level radiated by the device.
- (3) Above 1GHz limit: $E[\text{dB}\mu\text{V/m}] = \text{EIRP}[\text{dBm}] + 95.2 = 68.2 \text{ dBuV/m}$, for $\text{EIPR}[\text{dBm}] = -27\text{dBm}$.

For transmitters operating in the 5.725-5.85GHz band:

15.407(b)(4)(i) All emissions shall be limited to a level of -27dBm/MHz at 75MHz or more above or below the band edge increasing linearly to 10dBm/MHz at 25MHz above or below the band edge, and from 25MHz above or below the band edge increasing linearly to a level of 15.6dBm/MHz at 5MHz above or below the band edge, and from 5MHz above or below the band edge increasing linearly to a level of 27dBm/MHz at the band edge.

KDB789033 D02 v01r04 (G)(2)(c)

(i) Sections 15.407(b)(1) to (b)(3) specify the unwanted emission limits for the U-NII-1 and U-NII-2 bands. As specified, emissions above 1000 MHz that are outside of the restricted bands are subject to a peak emission limit of -27dBm/MHz.³

(ii) Section 15.407(b)(4) specifies the unwanted emission limit for the U-NII-3 band. A band emissions mask is specified in Section 15.407(b)(4)(i). The emission limits are in terms of a Peak detector. An alternative to the band emissions mask is specified in Section 15.407(b)(4)(ii). The alternative limits are based on the highest antenna gain specified in the filing. There are also marketing and importation restrictions for the devices using the alternative limit.⁴

Note 3: An out-of-band emission that complies with both the average and peak limits of Section 15.209 is not required to satisfy the -27 dBm/MHz peak emission limit.

Note 4: Only devices with antenna gains of 10 dBi or less may be approved using the emission limits specified in Section 15.247(d) till March 2, 2018; all other devices operating in this band must use the mask specified in Section 15.407(b)(4)(i).

4.2. Test Setup

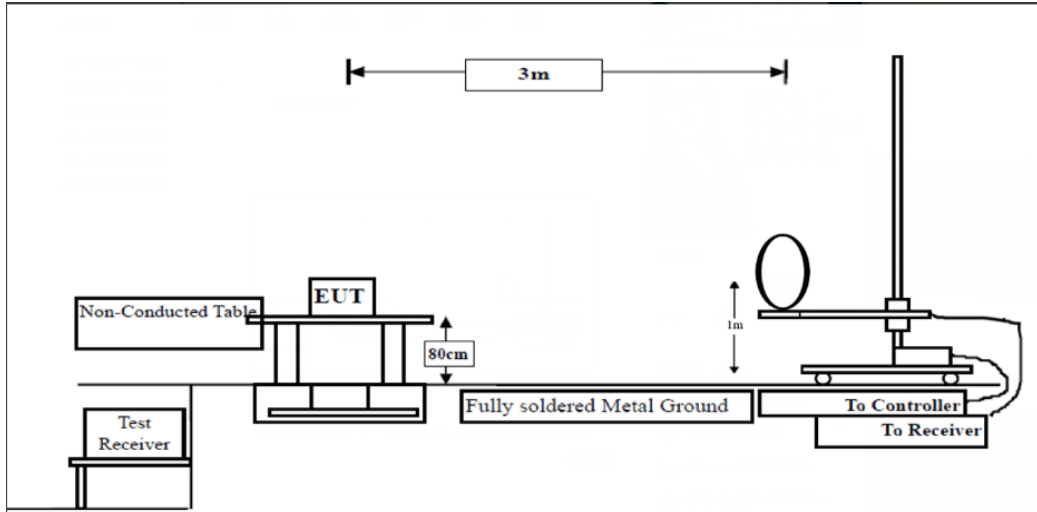


Figure 1. Below 30MHz

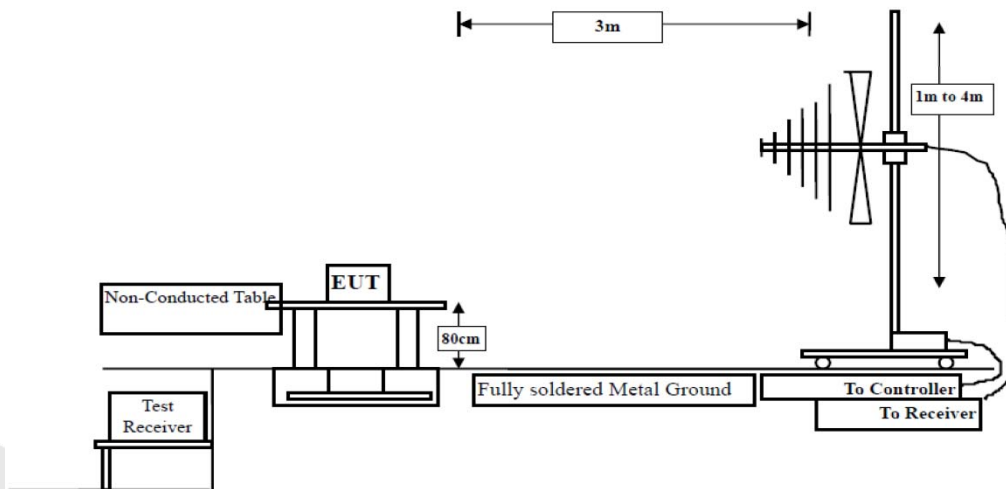


Figure 2. 30MHz to 1GHz

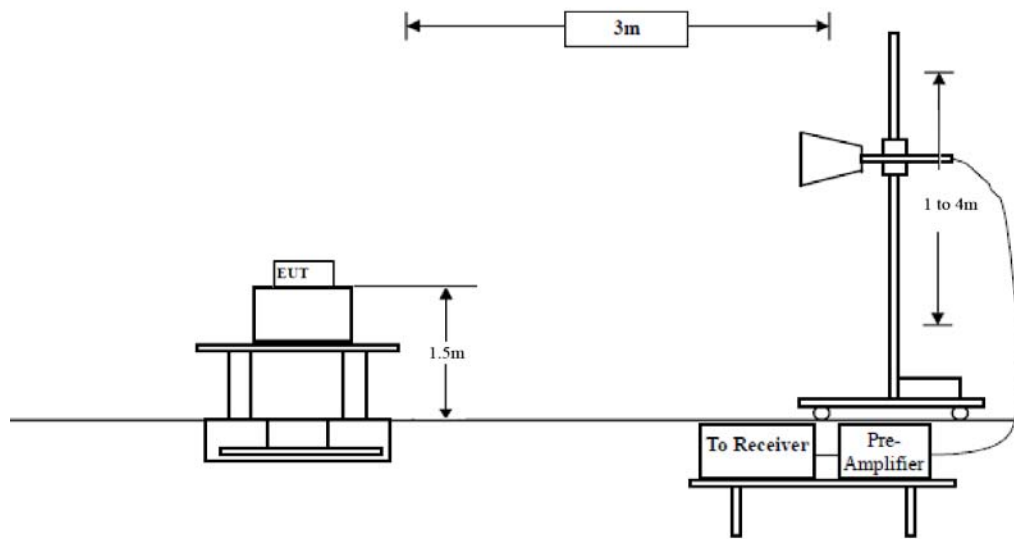


Figure 3. Above 1 GHz

4.3. Test Procedure

For below 1GHz: The EUT is placed on a turntable, which is 0.8m above the ground plane.

For above 1GHz: The EUT is placed on a turntable, which is 1.5m above the ground plane.

The turn table can rotate 360 degrees to determine the position of the maximum emission level. The EUT is set 3 meters away from the receiving antenna which is mounted on a antenna tower. The antenna can be moved up and down from 1 to 4 meters to find out the maximum emission level. Rotated the EUT through three orthogonal axes to determine the maximum emissions, both horizontal and vertical polarization of the antenna are set on test. The EUT is tested in 9*6*6 Chamber. The device is evaluated in xyz orientation.

For 9kHz to 150kHz, Set the spectrum analyzer as:

RBW = 200Hz, VBW =1kHz, Detector= Quasi-Peak, Trace mode= Max hold, Sweep- auto couple.

For 150kHz to 30MHz, Set the spectrum analyzer as:

RBW = 9KHz, VBW =30kHz, Detector= Quasi-Peak, Trace mode= Max hold, Sweep- auto couple.

For 30MHz to 1000MHz, Set the spectrum analyzer as:

RBW = 100kHz, VBW =300kHz, Detector= Quasi-Peak, Trace mode= Max hold, Sweep- auto couple.

For above 1GHz, Set the spectrum analyzer as:

RBW =1MHz, VBW =1MHz, Detector= Peak, Trace mode= Max hold, Sweep- auto couple.

RBW =1MHz, VBW =10Hz, Detector= Average, Trace mode= Max hold, Sweep- auto couple.

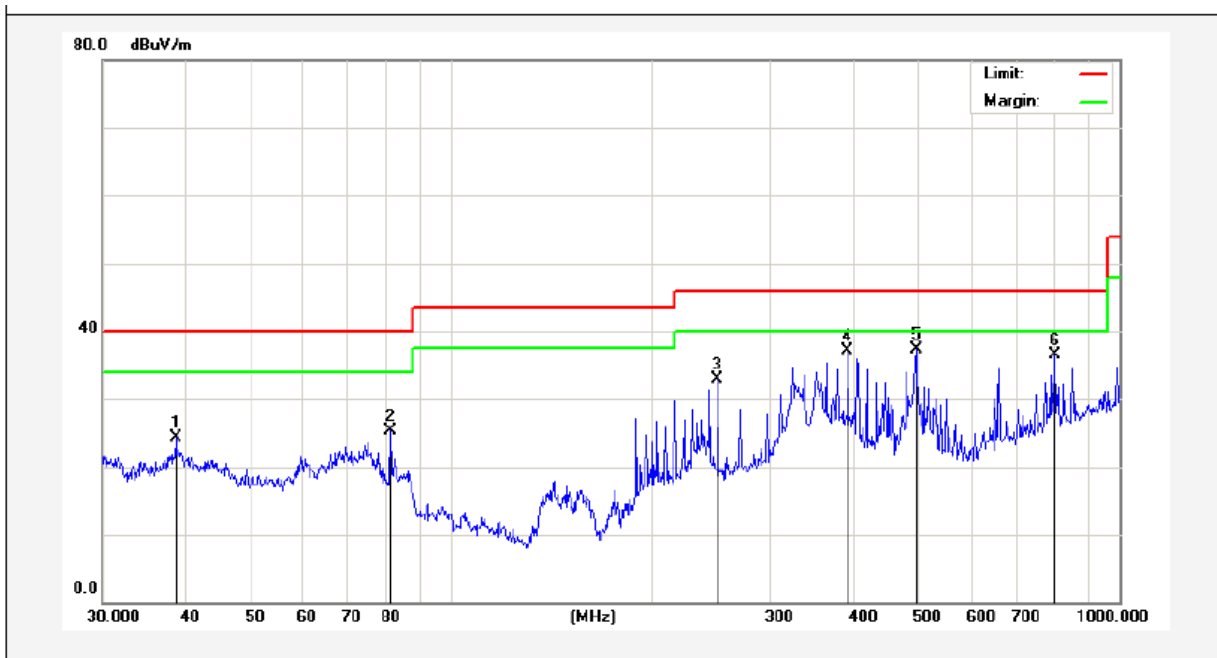
4.4. Test Data

PASS

The test results of 9kHz-30MHz and above 18000MHz are attenuated more than 20dB below the permissible limits, so the results don't record in the report.

Test Results (30~1000MHz)

Job No.: 0217080081W Temp.(°C)/Hum.(%RH): 24.3°C/55%RH
 Standard: FCC PART 15C Power Source: AC 120V/60Hz
 Test Mode: TX Mode Polarization: Horizontal

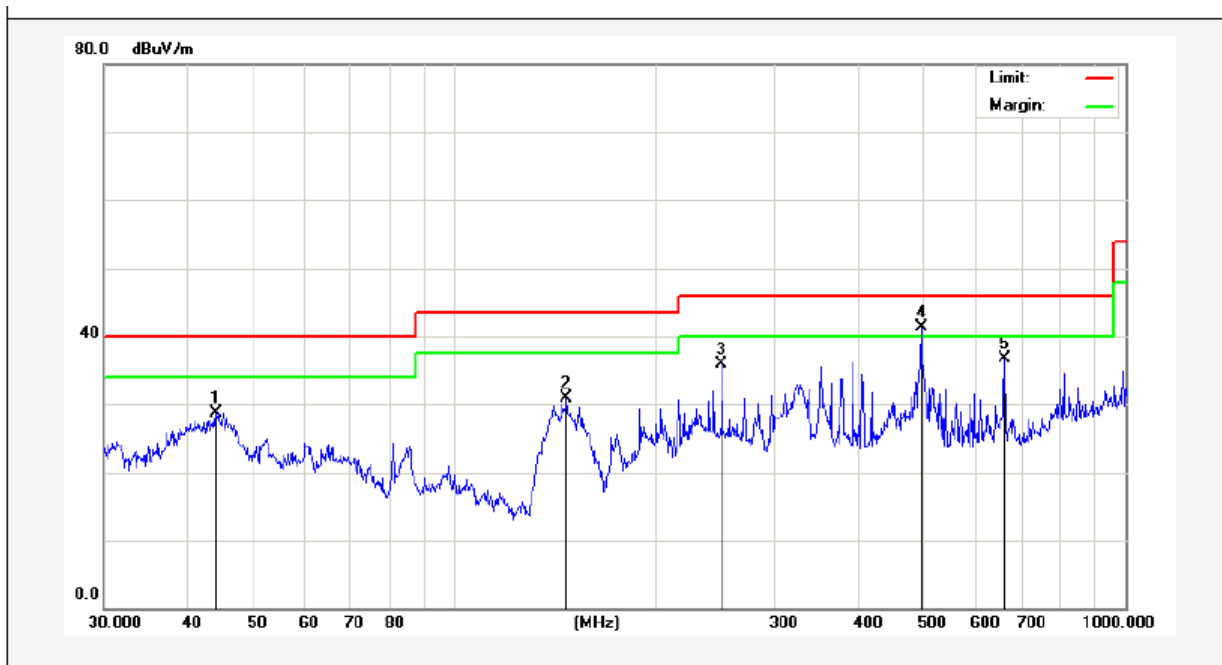


No.	Freq. (MHz)	Reading (dBuV/m)	Factor (dB/m)	Result (dBuV/m)	Limit (dBuV/)	Over Limit (dB)	Detector	Height (cm)	degree (deg)	Remark
1	38.6160	36.12	-11.88	24.24	40.00	-15.76	QP	300	100	
2	80.9275	47.05	-21.68	25.37	40.00	-14.63	QP	300	47	
3	250.3012	51.47	-18.56	32.91	46.00	-13.09	QP	300	69	
4	392.0951	50.15	-13.03	37.12	46.00	-8.88	QP	300	120	
5	495.9344	48.39	-11.06	37.33	46.00	-8.67	QP	300	78	
6	801.7863	43.09	-6.54	36.55	46.00	-9.45	QP	300	23	



Test Results (30~1000MHz)

Job No.: 0217080081W Temp.(°C)/Hum.(%RH): 24.3°C/55%RH
 Standard: FCC PART 15C Power Source: AC 120V/60Hz
 Test Mode: TX Mode Polarization: Vertical



No.	Freq. (MHz)	Reading (dBuV/m)	Factor (dB/m)	Result (dBuV/m)	Limit (dBuV/)	Over Limit (dB)	Detector	Height (cm)	degree (deg)	Remark
1	44.1200	40.95	-12.27	28.68	40.00	-11.32	QP	300	180	
2	146.8876	49.31	-18.38	30.93	43.50	-12.57	QP	300	240	
3	250.3011	49.85	-14.04	35.81	46.00	-10.19	QP	300	90	
4	495.9343	52.40	-11.06	41.34	46.00	-4.66	QP	300	360	
5	661.1504	45.54	-8.77	36.77	46.00	-9.23	QP	300	120	



Test Results (Above 1000MHz)

Test mode:	IEEE 802.11n(ac20)	Test channel:	Low CH
------------	--------------------	---------------	--------

Peak value:

Frequency (MHz)	Read Level (dBuV)	Antenna Factor (dB/m)	Cable Loss (dB)	Preamp Factor (dB)	Level (dBuV/m)	Limit Line (dBuV/m)	Over Limit (dB)	Pol.
11490.00	41.88	32.66	18.21	34.01	58.74	74.00	-15.26	V
17235.00	35.58	33.42	20.20	35.00	54.20	68.20	-14.00	V
11490.00	38.69	32.66	18.21	34.01	55.55	74.00	-18.45	H
17235.00	35.69	33.42	20.20	35.00	54.31	68.20	-13.89	H

Average value:

Frequency (MHz)	Read Level (dBuV)	Antenna Factor (dB/m)	Cable Loss (dB)	Preamp Factor (dB)	Level (dBuV/m)	Limit Line (dBuV/m)	Over Limit (dB)	Pol.
11490.00	32.89	32.66	18.21	34.01	49.75	54.00	-4.25	V
17235.00	29.56	33.42	20.20	35.00	48.18	54.00	-5.82	V
11490.00	30.85	32.66	18.21	34.01	47.71	54.00	-6.29	H
17235.00	27.69	33.42	20.20	35.00	46.31	54.00	-7.69	H

Test mode:	IEEE 802.11n(ac20)	Test channel:	Mid CH
------------	--------------------	---------------	--------

Peak value:

Frequency (MHz)	Read Level (dBuV)	Antenna Factor (dB/m)	Cable Loss (dB)	Preamp Factor (dB)	Level (dBuV/m)	Limit Line (dBuV/m)	Over Limit (dB)	Pol.
11570.00	40.25	32.67	18.24	34.02	57.14	74.00	-16.86	V
17355.00	37.58	33.44	20.22	35.01	56.23	68.20	-11.97	V
11570.00	39.63	32.67	18.24	34.02	56.52	74.00	-17.48	H
17355.00	36.18	33.44	20.22	35.01	54.83	68.20	-13.37	H

Average value:

Frequency (MHz)	Read Level (dBuV)	Antenna Factor (dB/m)	Cable Loss (dB)	Preamp Factor (dB)	Level (dBuV/m)	Limit Line (dBuV/m)	Over Limit (dB)	Pol.
11570.00	30.92	32.67	18.24	34.02	47.81	54.00	-6.19	V
17355.00	27.63	33.44	20.22	35.01	46.28	54.00	-7.72	V
11570.00	29.57	32.67	18.24	34.02	46.46	54.00	-7.54	H
17355.00	27.21	33.44	20.22	35.01	45.86	54.00	-8.14	H

Test mode:	IEEE 802.11n(ac20)	Test channel:	High CH
------------	--------------------	---------------	---------

Peak value:

Frequency (MHz)	Read Level (dBuV)	Antenna Factor (dB/m)	Cable Loss (dB)	Preamp Factor (dB)	Level (dBuV/m)	Limit Line (dBuV/m)	Over Limit (dB)	Pol.
11650.00	40.96	32.69	18.26	34.04	57.87	74.00	-16.13	V
17475.00	38.53	33.46	20.23	35.02	57.20	68.20	-11.00	V
11650.00	39.30	32.69	18.26	34.04	56.21	74.00	-17.79	H
17475.00	37.57	33.46	20.23	35.02	56.24	68.20	-11.96	H

Average value:

Frequency (MHz)	Read Level (dBuV)	Antenna Factor (dB/m)	Cable Loss (dB)	Preamp Factor (dB)	Level (dBuV/m)	Limit Line (dBuV/m)	Over Limit (dB)	Pol.
11650.00	30.89	32.69	18.26	34.04	47.80	54.00	-6.20	V
17475.00	28.63	33.46	20.23	35.02	47.30	54.00	-6.70	V
11650.00	28.87	32.69	18.26	34.04	45.78	54.00	-8.22	H
17475.00	27.55	33.46	20.23	35.02	46.22	54.00	-7.78	H

Note:

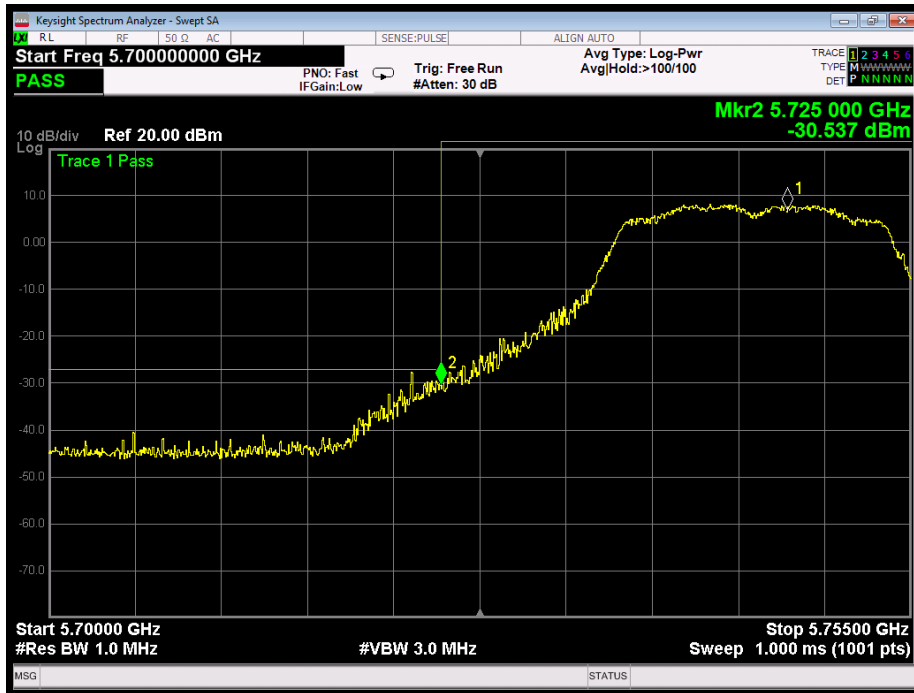
- Final Level = Receiver Read level + Antenna Factor + Cable Loss - Preamplifier Factor

Radiated Band Edge:

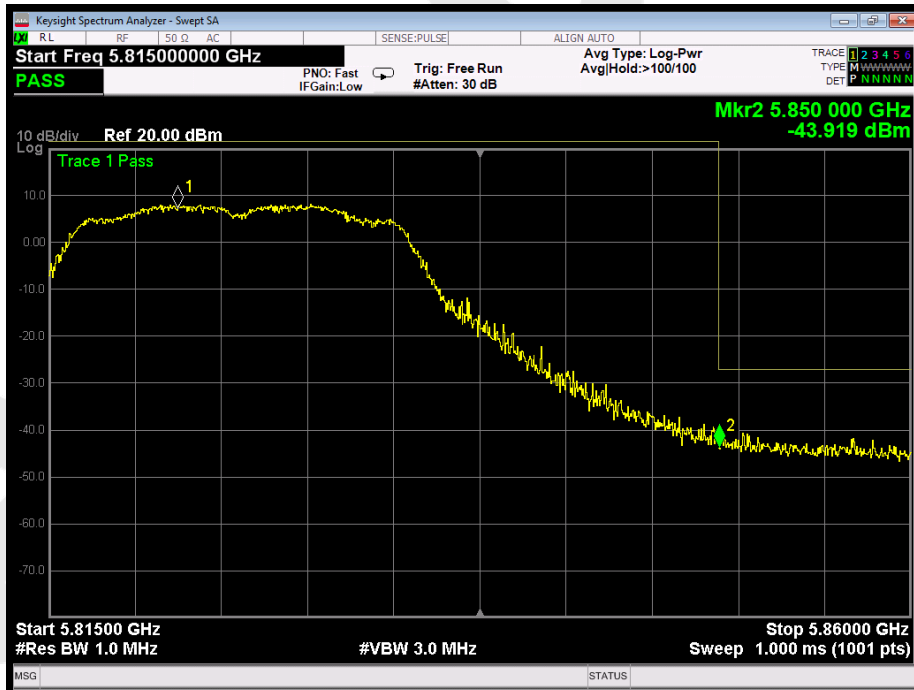
Test Mode: 802.11ac20								
Peak Value								
Frequency (MHz)	Read Level (dBuV)	Antenna Factor (dB/m)	Cable Loss (dB)	Preamp Factor (dB)	Level (dBuV/m)	Limit (dBuV/m)	Over Limit (dB)	Pol.
5725.00	40.89	29.78	15.69	31.08	55.28	68.20	-12.92	H
5850.00	41.58	30.01	16.82	32.09	56.32	68.20	-11.88	H
5725.00	42.55	29.78	15.69	31.08	56.94	68.20	-11.26	V
5850.00	42.16	30.01	16.82	32.09	56.90	68.20	-11.30	V
Average Value								
Frequency (MHz)	Read Level (dBuV)	Antenna Factor (dB/m)	Cable Loss (dB)	Preamp Factor (dB)	Level (dBuV/m)	Limit (dBuV/m)	Over Limit (dB)	Pol.
5725.00	33.89	29.78	15.69	31.08	48.28	54.00	-5.72	H
5850.00	33.58	30.01	16.82	32.09	48.32	54.00	-5.68	H
5725.00	33.96	29.78	15.69	31.08	48.35	54.00	-5.65	V
5850.00	34.57	30.01	16.82	32.09	49.31	54.00	-4.69	V

For conducted test:

802.11ac(20): Band Edge, Left Side



802.11ac(20): Band Edge, Right Side

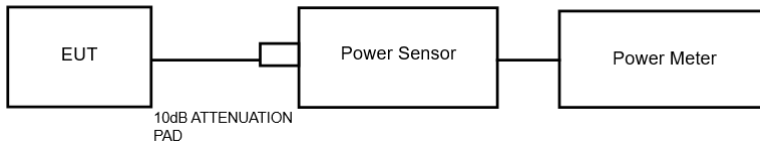


5. Maximum Peak Output Power Test

5.1. Test Standard and Limit

Test Standard	FCC Part15 C Section 15.407 (a)(1) (3)
Test Limit	30dBm (1W)

5.2. Test Setup



5.3. Test Procedure

1. The Transmitter output (antenna port) was connected to the power meter.
2. Turn on the EUT and power meter and then record the power value.
3. Repeat above procedures on all channels needed to be tested.

Note: The cable loss and attenuator loss were offset into measure device as an amplitude offset.

5.4. Test Data

Test Item	: Max. peak output power	Test Mode	: CH Low ~ CH High
Test Voltage	: AC 120V/60Hz	Temperature	: 24°C
Test Result	: PASS	Humidity	: 55%RH

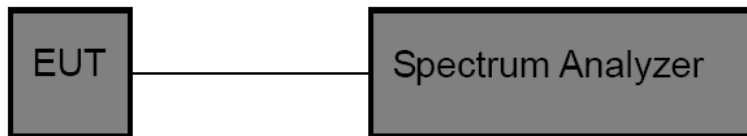
Mode	Channel Frequency (MHz)	Peak Power output (dBm)	Limit (dBm)	Results
802.11ac20	5745	17.24	30.00	PASS
	5785	17.15	30.00	PASS
	5825	16.76	30.00	PASS

6. Occupy Bandwidth Test

6.1. Test Standard

Test Standard	FCC Part15 C Section 15.403(i), 15.407 (e)
---------------	--

6.2. Test Setup



6.3. Test Procedure

1. Place the EUT on the table and set it in the transmitting mode.
2. Remove the antenna from the EUT and then connect a low loss RF cable from the antenna port to the spectrum analyzer.

3. Set the spectrum analyzer as:

26 dB & 99% bandwidth

- RBW = approximately 1% of the emission bandwidth;
- Set the VBW > RBW;
- Detector = Peak
- Trace mode = Max hold.
- Sweep - auto couple.

6 dB bandwidth

- RBW = 100kHz;
- Set the video bandwidth (VBW) ≥ 3 RBW;
- Detector = Peak
- Trace mode = Max hold.
- Sweep - auto couple.

4. Measure the maximum width of the emission that is 26dB /6dB down from the maximum of the emission. Compare this with the RBW setting of the analyzer.
5. Repeat until all the rest channels are investigated.

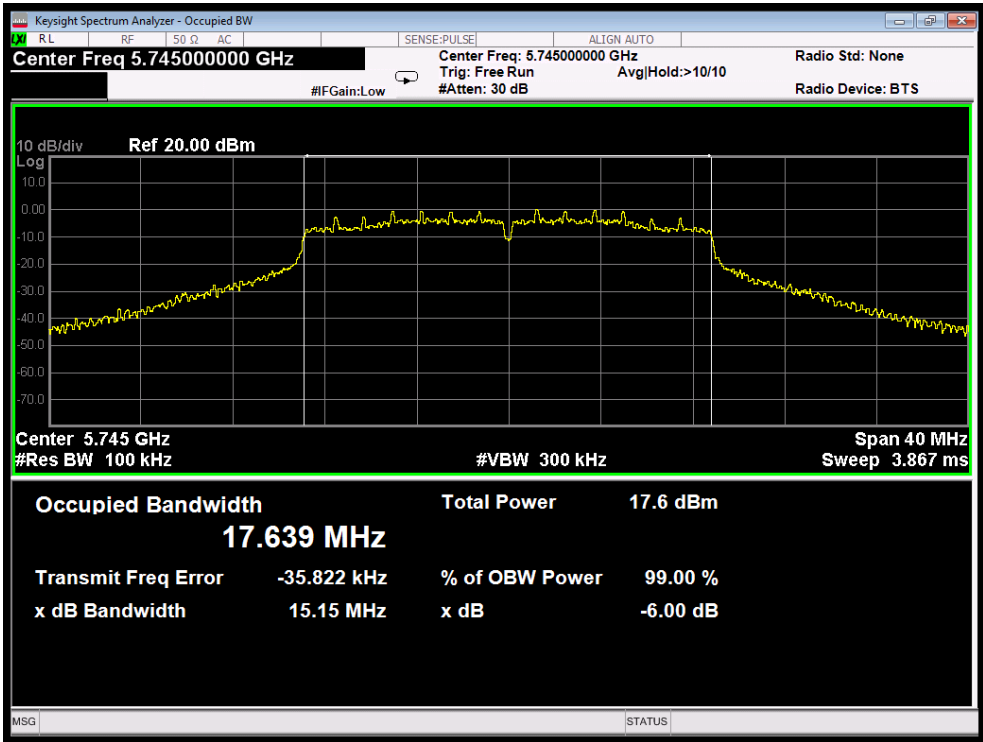
6.4. Test Data

Test Item	: 6dB & 26dB BW	Test Mode	: CH Low ~ CH High
Test Voltage	: AC 120V/60Hz	Temperature	: 24°C
Test Result	: PASS	Humidity	: 55%RH

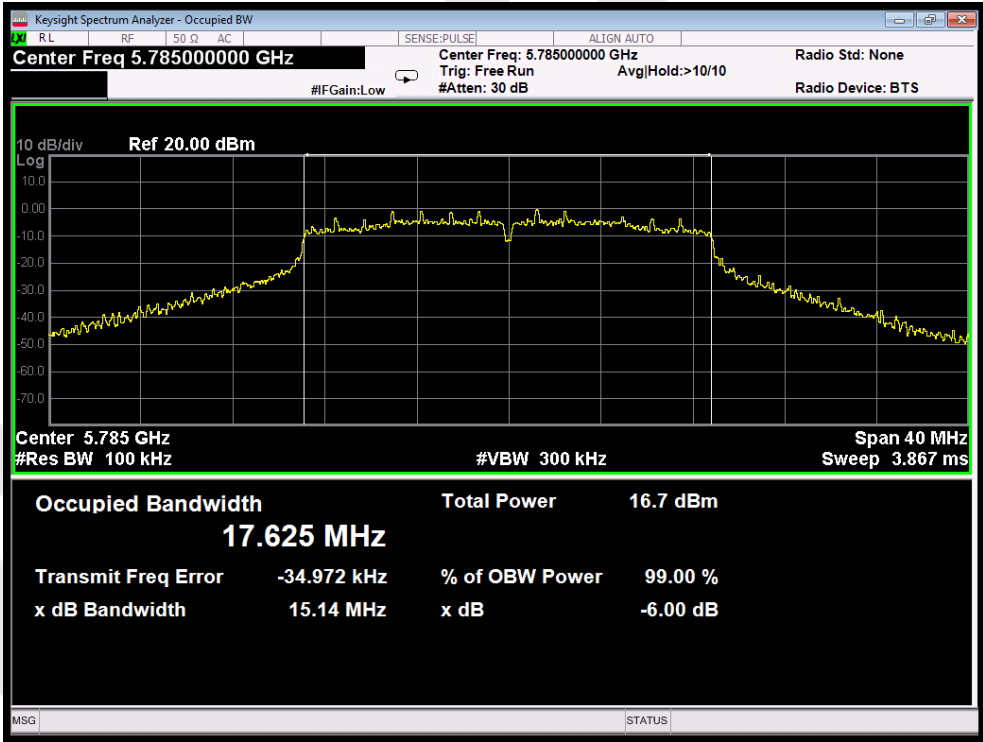
Mode	Channel Frequency (MHz)	6dB BW(MHz)	Limit	Results
802.11ac20	5745	15.15	≥500kHz	PASS
	5785	15.14		PASS
	5825	15.17		PASS

Mode	Channel Frequency (MHz)	26dB BW(MHz)	99% Bandwidth (MHz)
802.11ac20	5745	25.71	17.930
	5785	24.57	17.822
	5825	24.89	17.822

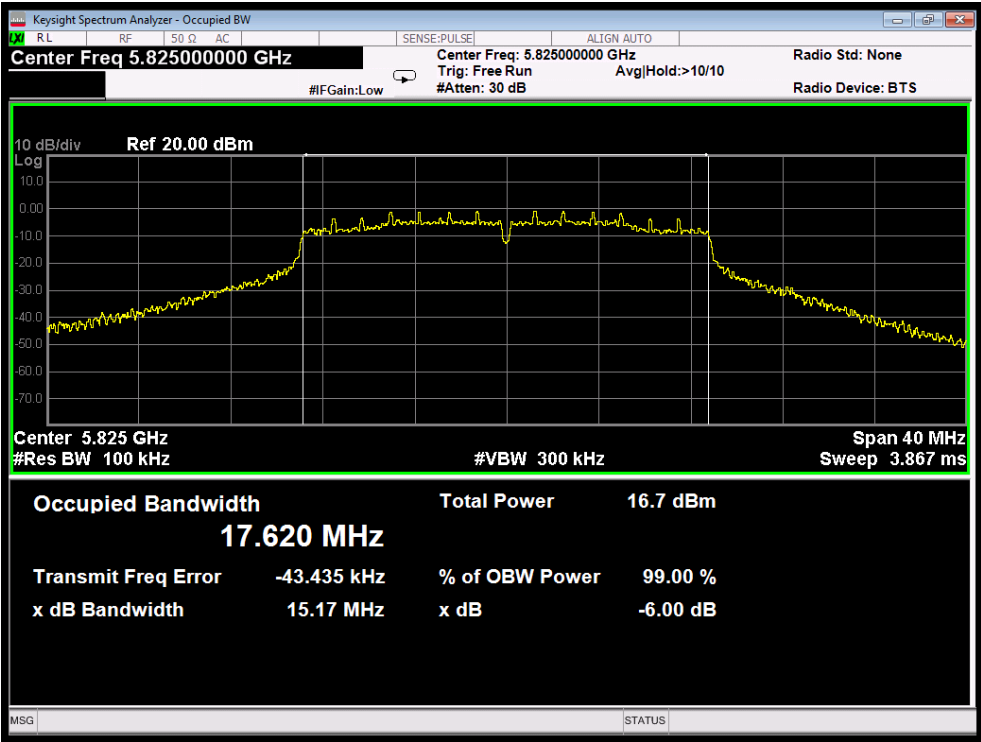
6dB Bandwidth



Test Mode: 802.11ac20--Low

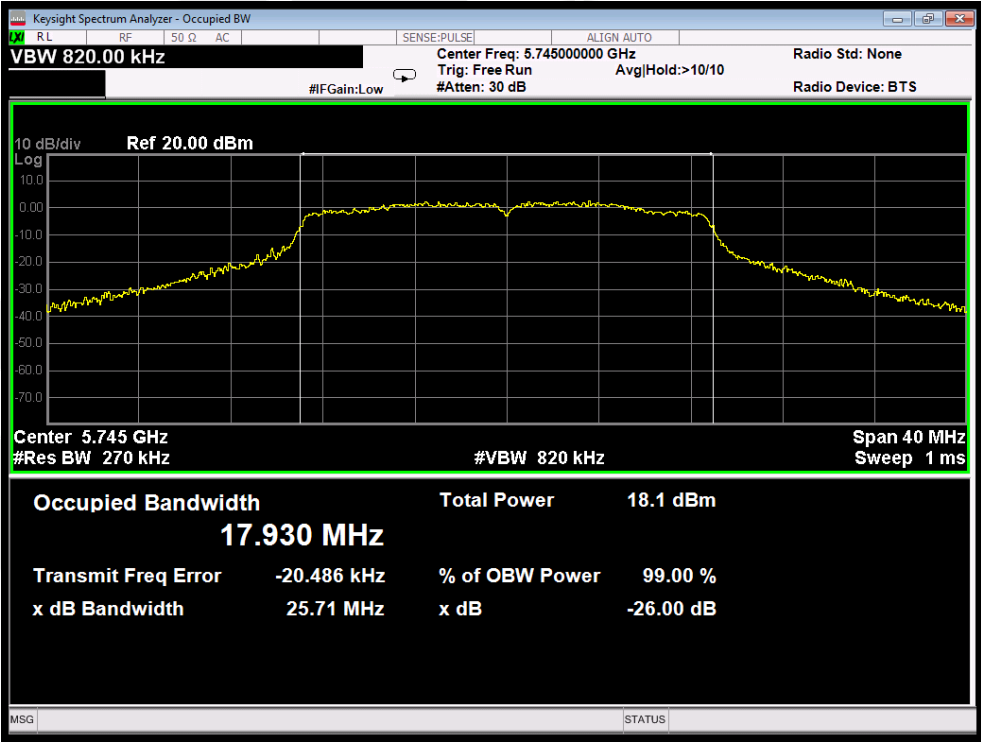


Test Mode: 802.11ac20--Middle

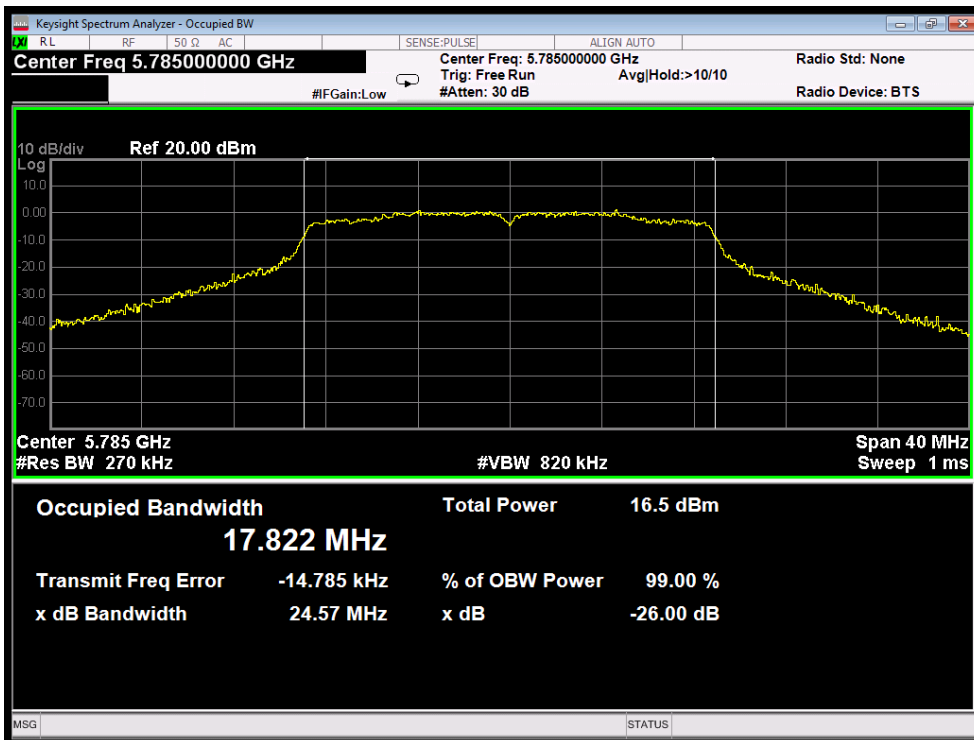


Test Mode: 802.11ac20---High

26dB &99% Bandwidth

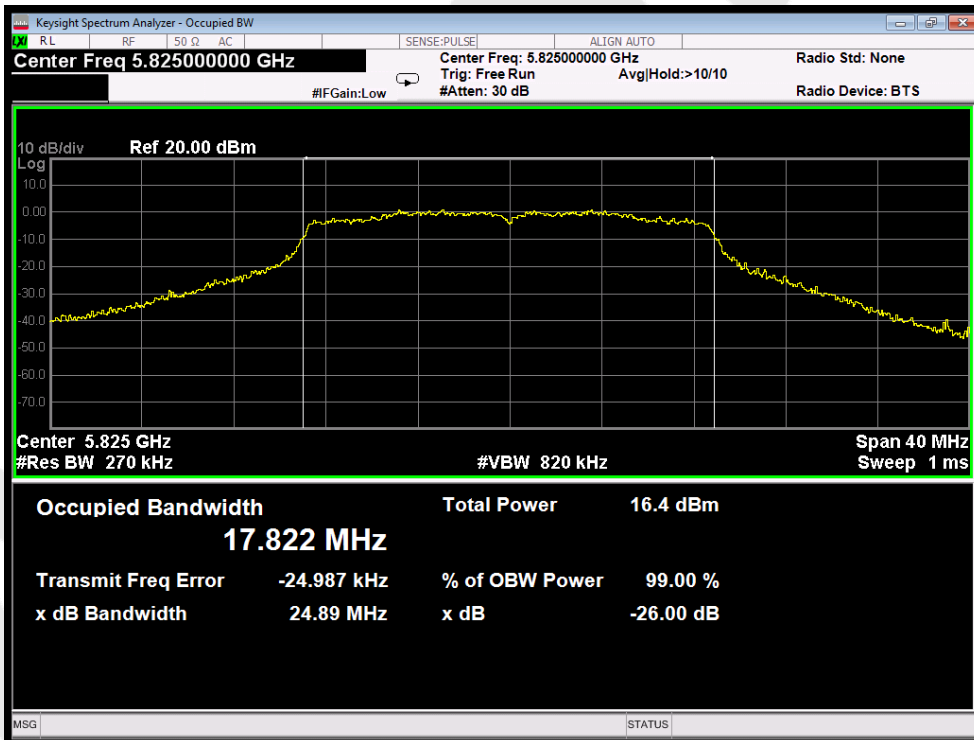


Test Mode: 802.11ac20--Low



Test Mode: 802.11ac20---Middle

Test Mode: 802.11ac20---High

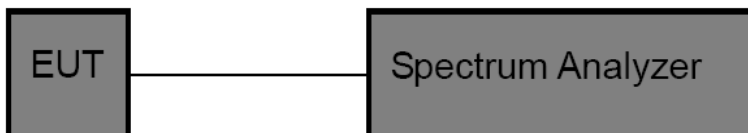


7. Power Spectral Density Test

7.1. Test Standard and Limit

Test Standard	FCC Part15 C Section 15.407 (a) (3)
Test Limit	not exceed 30dBm/500kHz

7.2. Test Setup



7.3. Test Procedure

For devices operating in the bands 5.15-5.25 GHz, 5.25-5.35 GHz, and 5.47-5.725 GHz, the above procedures make use of 1 MHz RBW to satisfy directly the 1 MHz reference bandwidth specified in § 15.407(a)(5). For devices operating in the band 5.725-5.85 GHz, the rules specify a measurement bandwidth of 500 kHz. Many spectrum analyzers do not have 500 kHz RBW, thus a narrower RBW may need to be used. The rules permit the use of a RBWs less than 1 MHz, or 500 kHz, “provided that the measured power is integrated over the full reference bandwidth” to show the total power over the specified measurement bandwidth (i.e., 1 MHz, or 500 kHz).

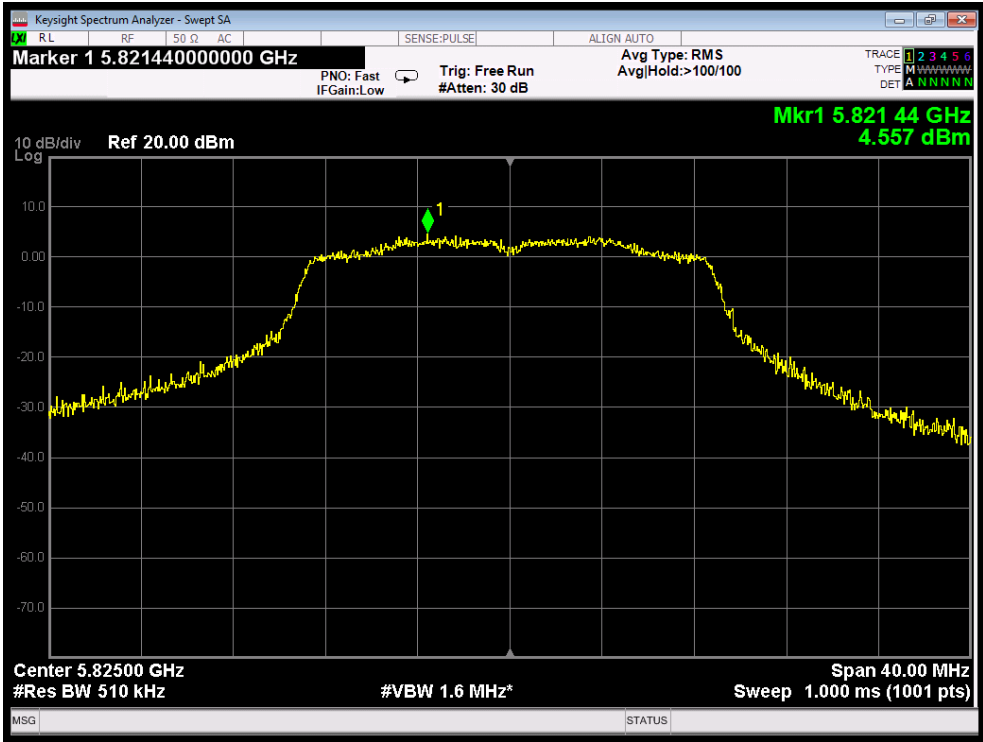
1. The EUT is directly connected to the spectrum analyzer;
2. Set RBW =500KHz;
3. Set VBW ≥ 3 RBW=1.5MHz;
3. Set the span to encompass the entire emissions bandwidth (EBW) of the signal;
5. Detector=RMS;
6. Sweep time= auto couple;
7. Trace mode=max. hold;

7.4. Test Data

Test Item	: Power Spectral Density	Test Mode	: CH Low ~ CH High
Test Voltage	: AC 120V/60HZ	Temperature	: 24°C
Test Result	: PASS	Humidity	: 55%RH

ANT 1

Mode	Channel Frequency (MHz)	Final Power Spectral Density (dBm)	Limit	Results
802.11ac20	5745	4.807	30dBm	PASS
	5785	4.104		PASS
	5825	4.557		PASS



Test Mode: 802.11ac20---High

8. Antenna Requirement

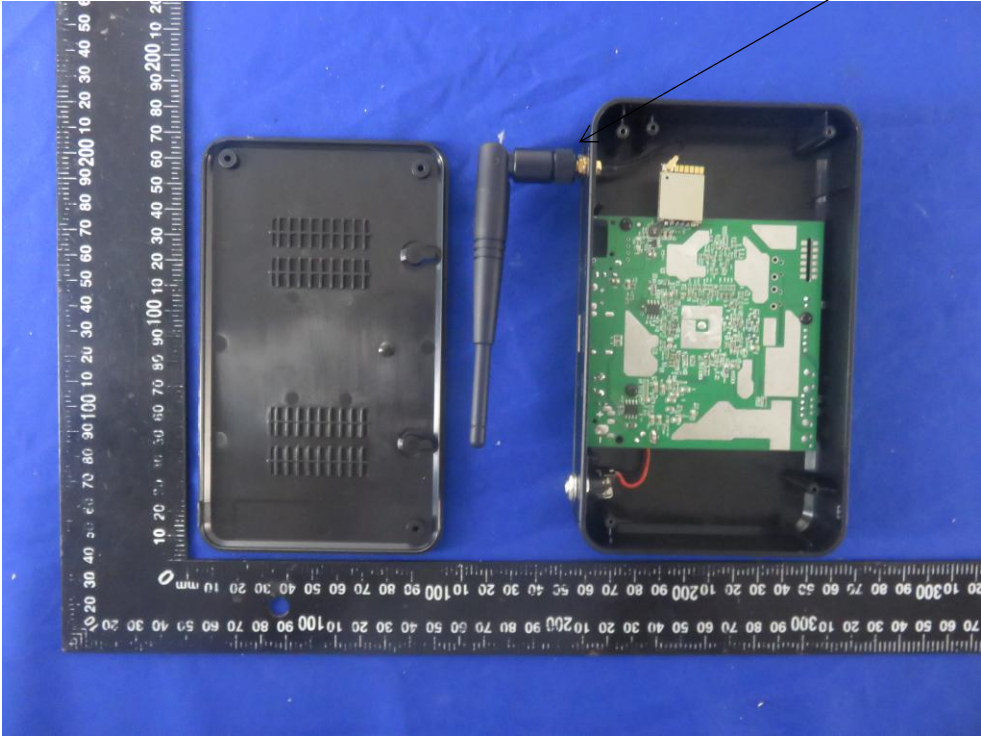
8.1. Test Standard and Requirement

Test Standard	FCC Part15 Section 15.203 /15.407
Requirement	<p>1) 15.203 requirement: An intentional radiator shall be designed to ensure that no antenna other than that furnished by the responsible party shall be used with the device. The use of a permanently attached antenna or of an antenna that uses a unique coupling to the intentional radiator, the manufacturer may design the unit so that a broken antenna can be replaced by the user, but the use of a standard antenna jack or electrical connector is prohibited.</p> <p>2) 15.407 requirement: An intentional radiator shall be designed to ensure that no antenna other than that furnished by the responsible party shall be used with the device. The use of a permanently attached antenna or of an antenna that uses a unique coupling to the intentional radiator shall be considered sufficient to comply with the provisions of this section. The manufacturer may design the unit so that a broken antenna can be replaced by the user, but the use of a standard antenna jack or electrical connector is prohibited. This requirement does not apply to carrier current devices or to devices operated under the provisions of §15.211, §15.213, §15.217, §15.219, or §15.221. Further, this requirement does not apply to intentional radiators that must be professionally installed, such as perimeter protection systems and some field disturbance sensors, or to other intentional radiators which, in accordance with §15.31(d), must be measured at the installation site. However, the installer shall be responsible for ensuring that the proper antenna is employed so that the limits in this part are not exceeded.</p>

8.2. Antenna Connected Construction

The WIFI antenna is a Rod antenna which permanently attached, and the best case gain of the antenna is 3 dBi. It complies with the standard requirement.

WIFI Antenna

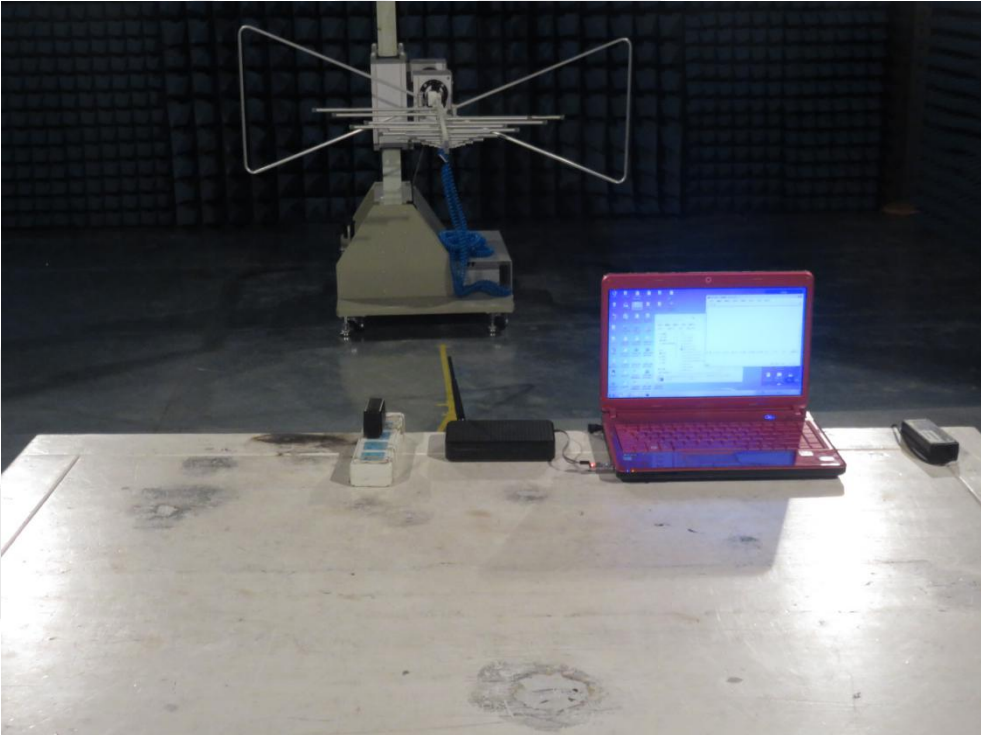


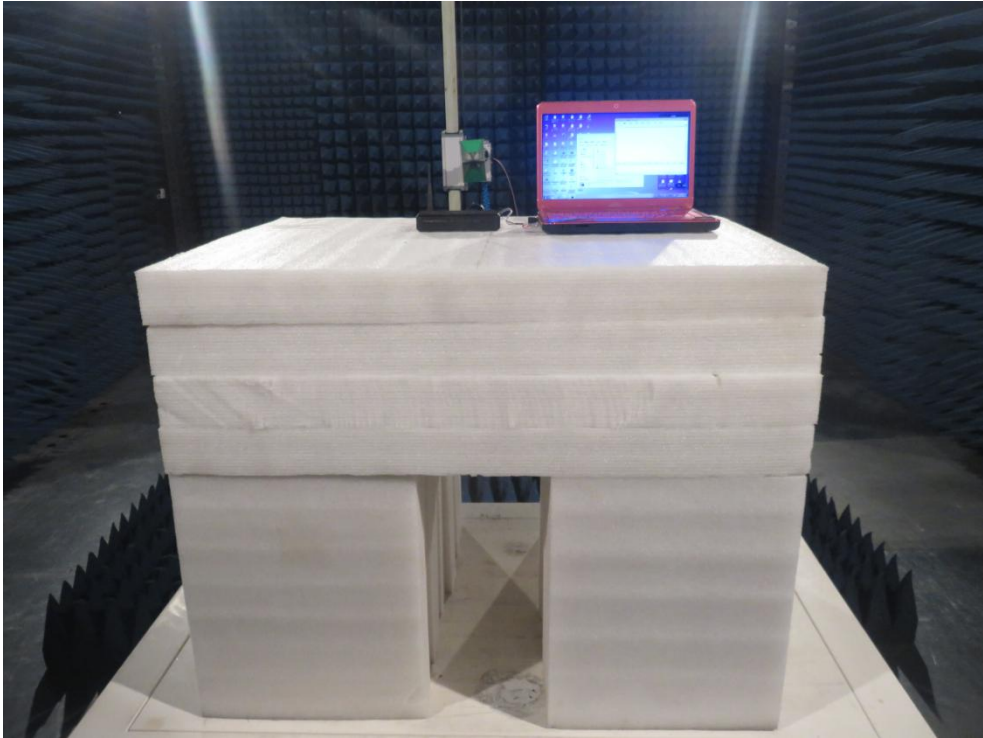
APPENDIX I -- TEST SETUP PHOTOGRAPH

Photo of Conducted Emission Measurement



Photo of Radiation Emission Test

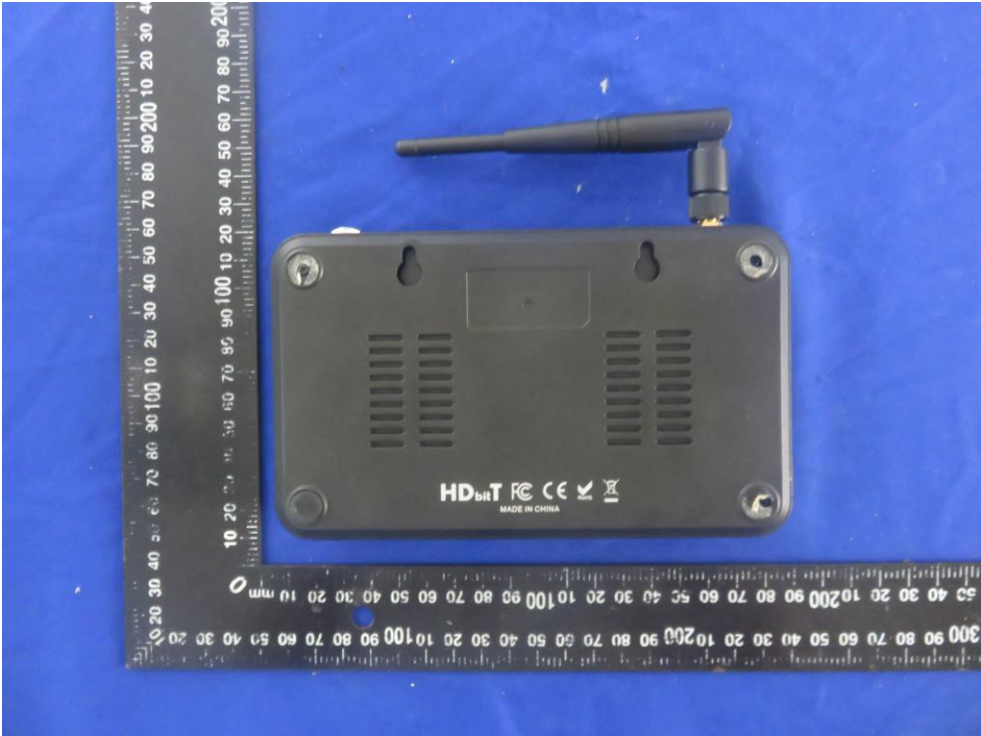




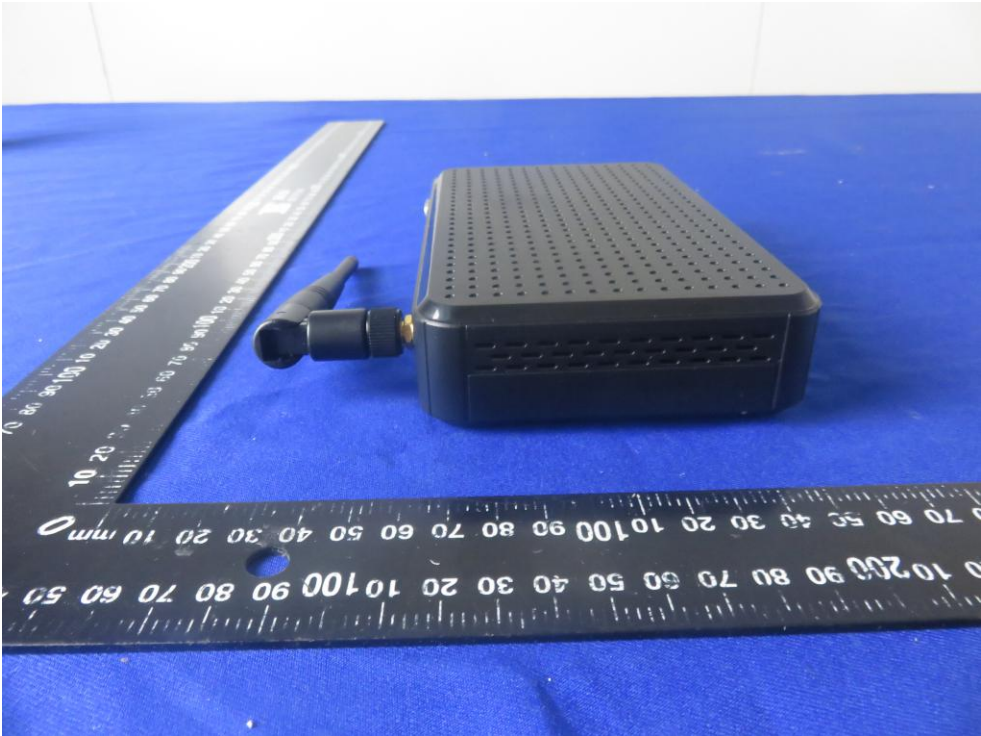
Anbotek

APPENDIX II -- EXTERNAL PHOTOGRAPH



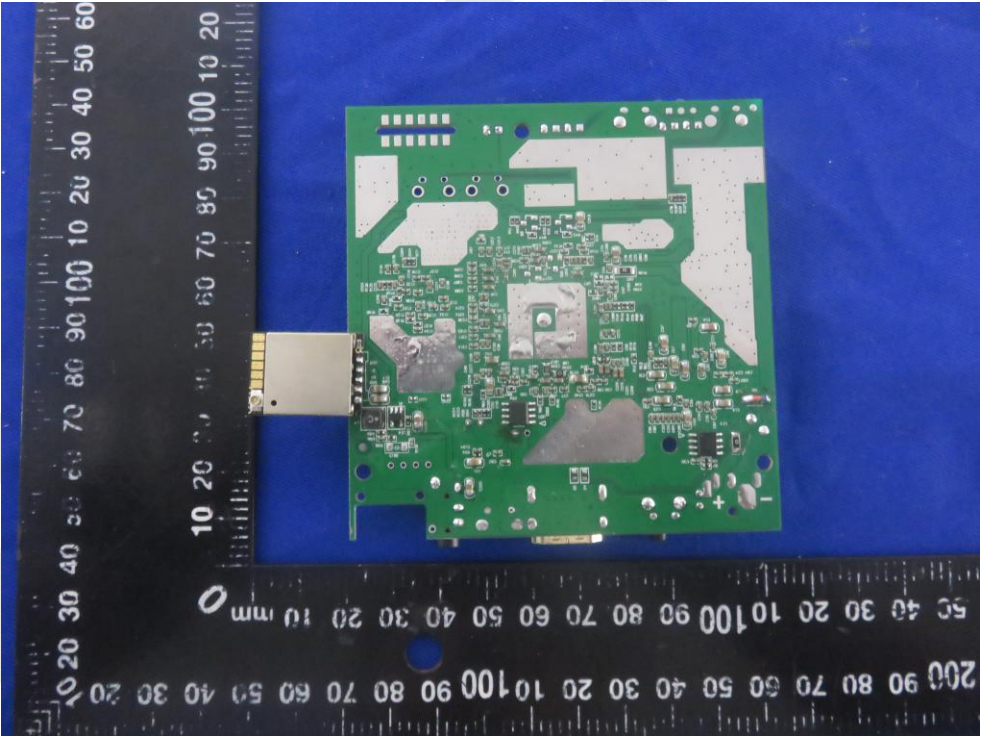
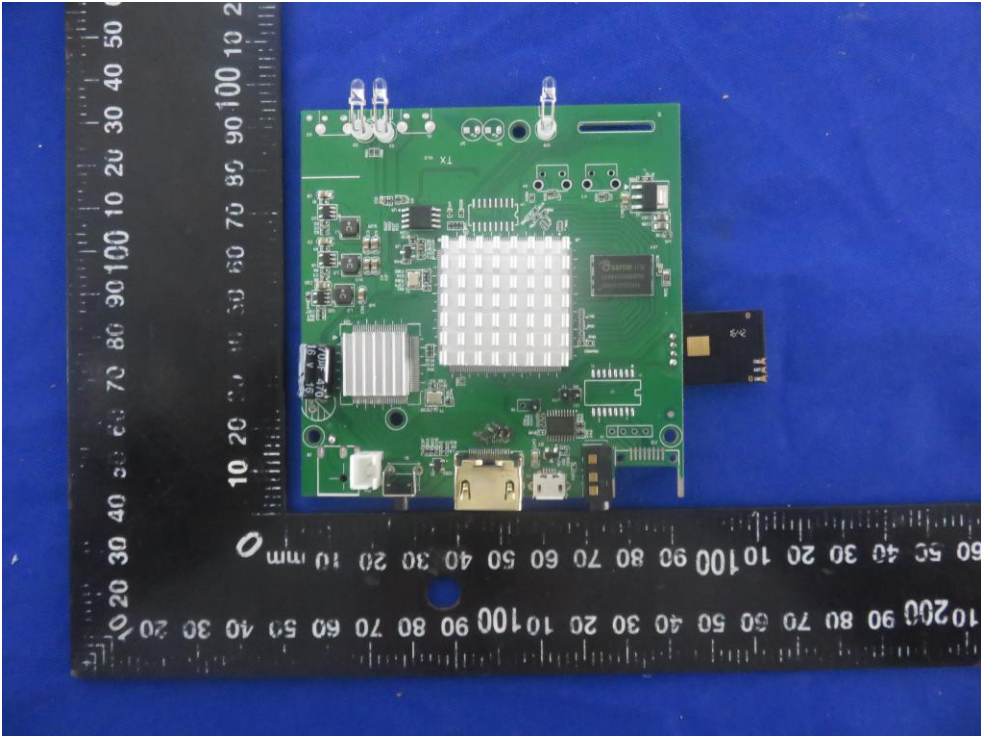


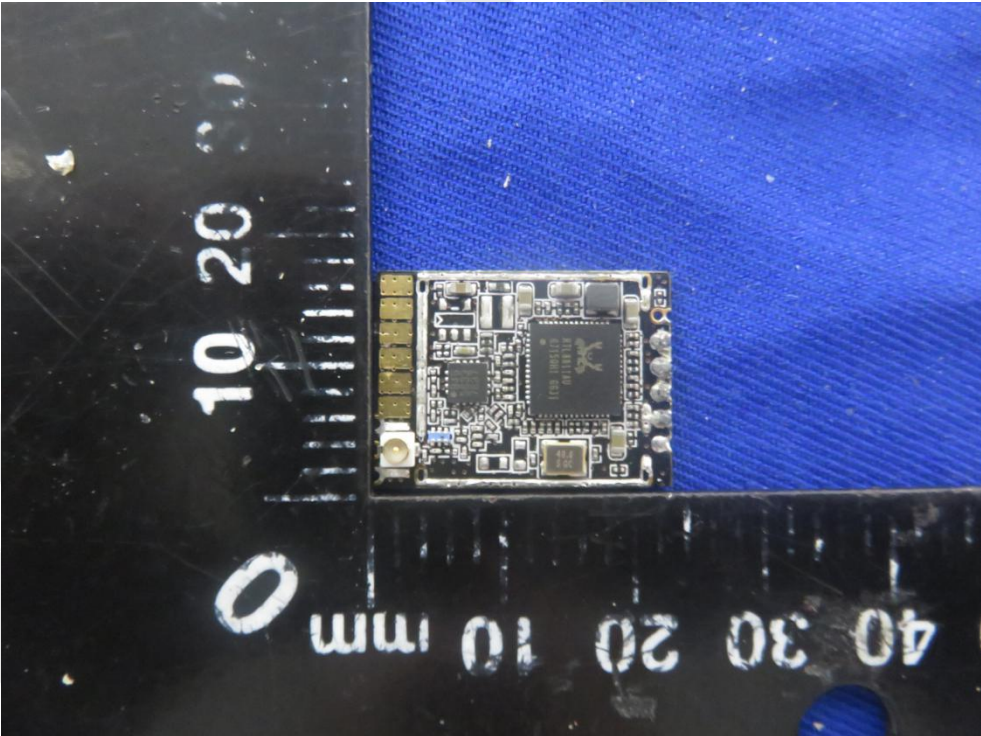
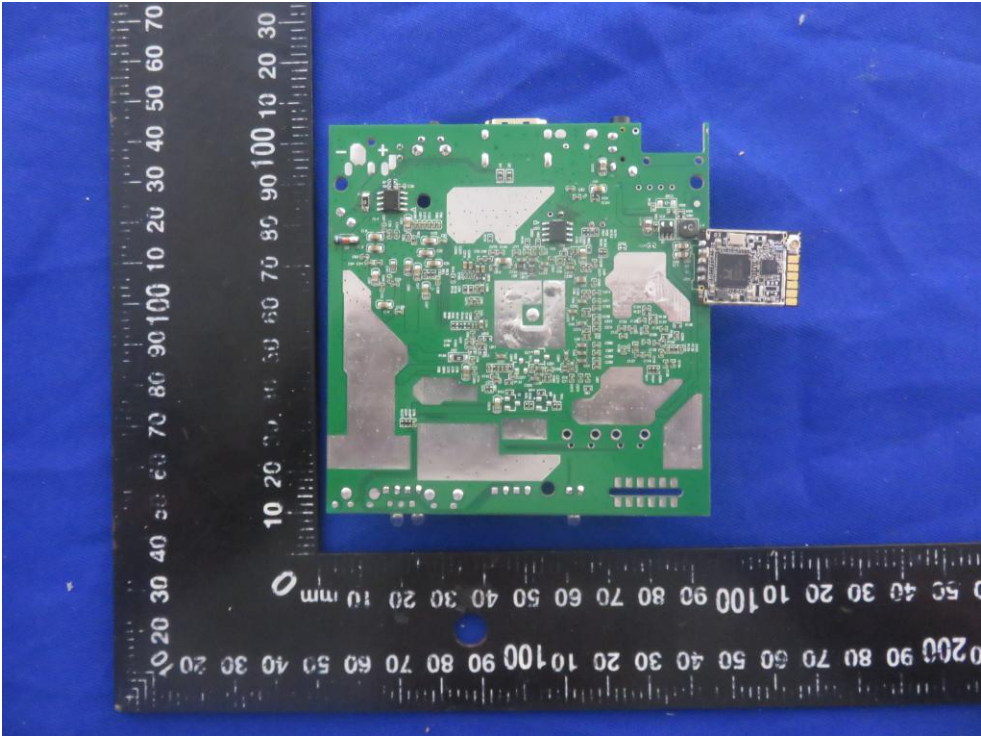


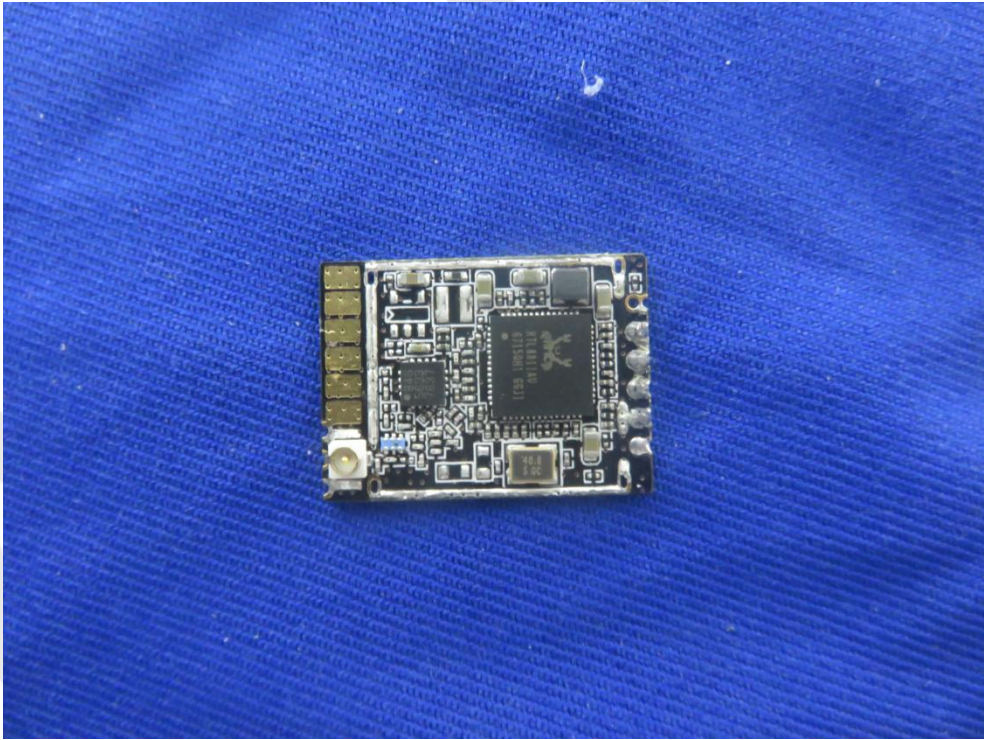
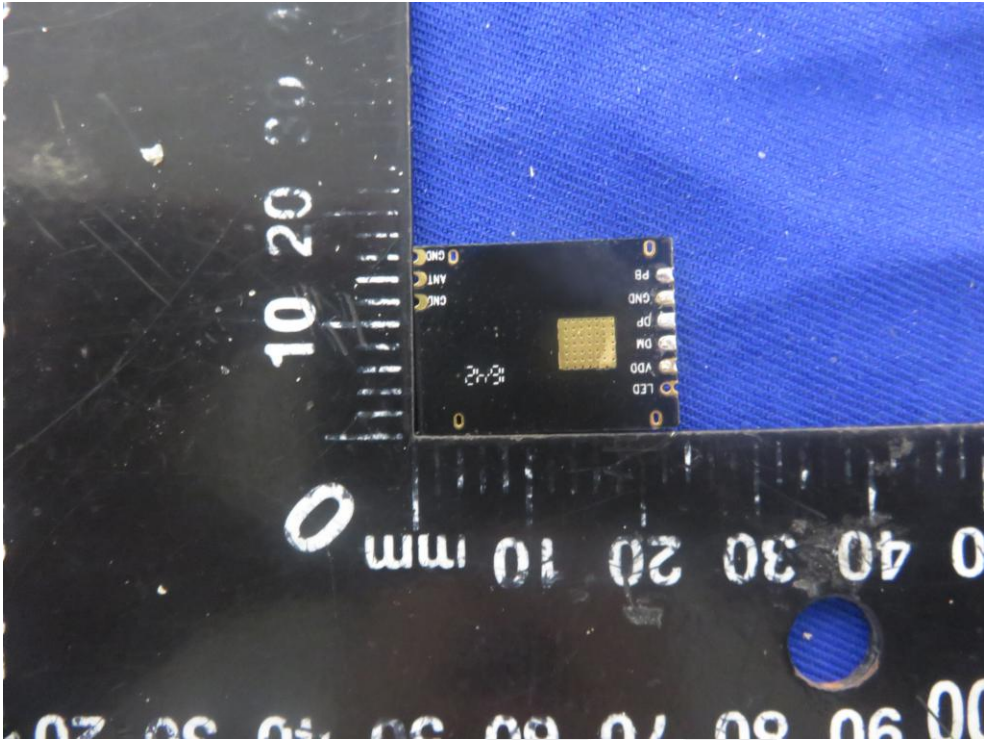


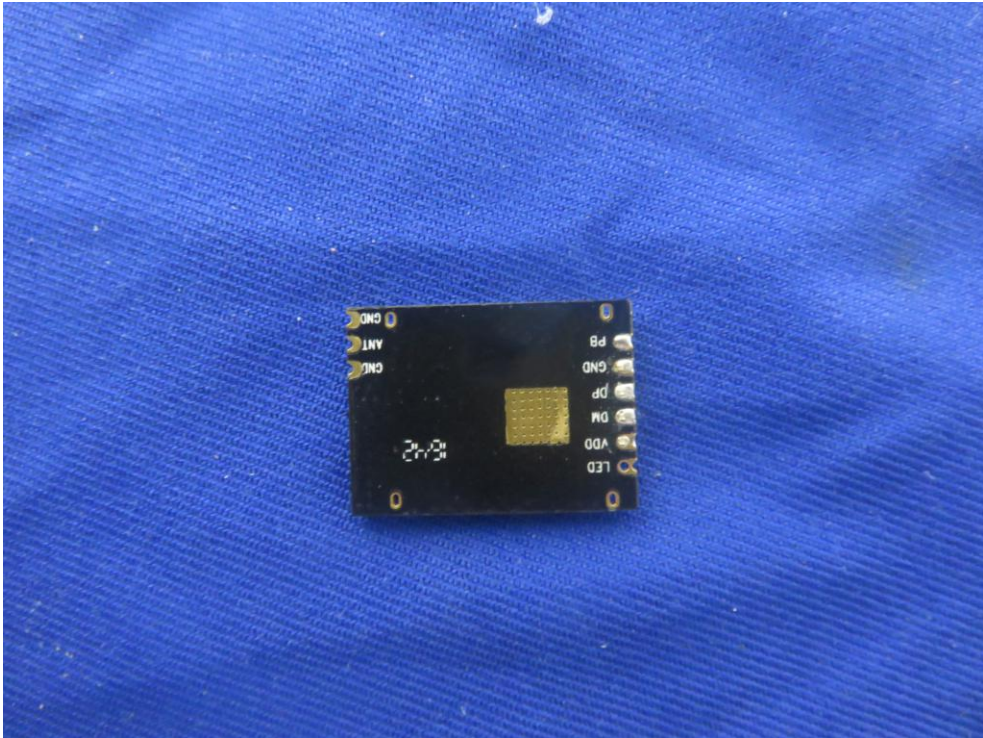
APPENDIX III -- INTERNAL PHOTOGRAPH











Anbotek