



GETTING STARTED

Thank you for choosing the Orb+ Smart RGB+IC LED Light by Monster Smart Illuminescence. This quick start guide will help you with setup and installation of your device.

WHAT'S IN THE BOX

- 1 x Orb+ Light
- 1 x 4ft USB charging cable
- 1 x Quick Start Guide

WHAT DO YOU NEED?

- Cellphone or tablet with Android™ 6.0 Marshmallow or higher / iOS 10 or higher
- Wi-Fi router with an internet connection
- Wi-Fi 2.4GHz 802.11n

Before setup, make sure your phone or tablet is connected to the **2.4GHz Wi-Fi network** that your LED Strip will be placed on. For easier pairing, turn on Location and Bluetooth to quickly find nearby devices.

TIP: Do you know your Wi-Fi network name and password? Write it down now if it's hard to remember.

TIP: Save these instructions for future reference.

SETUP COMPLETE SETUP BEFORE INSTALLATION

Remove your Orb+ and all components from the box. It is recommended to first pair your device in a location close to your router **BEFORE** installation.

NOTE: If desired, you can operate the device with the controls and without pairing to Wi-Fi and without the app. Advanced features like color customization, scheduling, and voice control will not be available. (See "How To Use" on page 5)

STEP 1 - CHARGING

The Orb+ has a built-in rechargeable battery that can be charged using the included micro USB to USB Type-A cable and any 5v USB power source (not included). For best results, fully charge the Orb+ before setup.



When the battery is low, the LED indicator will glow RED (when the USB cover is closed, the LED will shine through) While charging, the LED will glow GREEN. When charging is complete, the LED will turn OFF.

NOTE: Under normal operation, the Orb+ can provide over 6hrs of light. White colors, high brightness settings, and frequent Wi-Fi controlled adjustments can reduce the total battery run time.

NOTE: WATER-RESISTANCE

Your Orb+ is water-resistant and is suitable for both indoor and outdoor use. To ensure maximum water protection:

- Keep the silicon USB cover tightly sealed at all times.
- Do not charge the Orb+ in wet environments.
- Do not submerge the Orb+ in water.
- Avoid dropping or damaging the Orb+.

STEP 2

Download the **MONSTER SMART** app from the App Store (for iPhone) or Google Play Store (for Android phones).



STEP 3

Make sure your phone or tablet is successfully connected to the **2.4GHz Wi-Fi network** that your device will be placed on and **ensure that your Bluetooth is enabled**.

Open the **MONSTER SMART** app and create an account by following the on-screen instructions.

NOTE: Most Smart devices only work on a 2.4GHz Wi-Fi network. Many newer home Wi-Fi networks are mixed networks that are set to 5GHz by default (ex: AT&T, Verizon) and you may need to use AP pairing mode to connect. If you still have difficulty, contact your Internet Service Provider for assistance with 2.4GHz network setup.

STEP 4

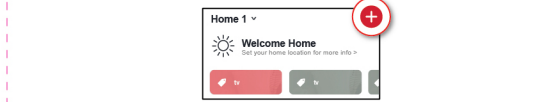
Press and hold the power button for 3 seconds to turn on the light. Press and hold the reset button for 5-6 seconds to enter pairing mode. The light will begin blinking when it has entered pairing mode and is ready to pair.



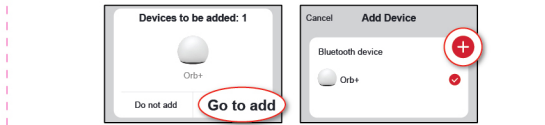
brightness (POWER)
scene (RESET)

STEP 5

Confirm that the device is in pairing mode, LED is **RAPIDLY** blinking. In the **MONSTER SMART** app, select the "+" in the upper right corner of the home screen to add a new device.

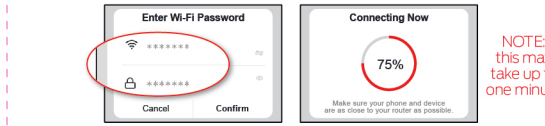


The app will detect the nearby Wi-Fi+BLE enabled device and ask if you would like to add it, click "Go to add". Ensure that the device is checked and then click the "+" button.

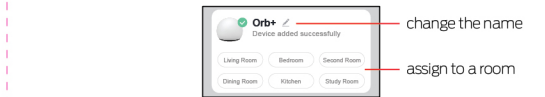


STEP 6

Confirm that the network displayed is your **2.4GHz Wi-Fi network**, then enter your Wi-Fi password and click "Confirm".



Once complete, your device will be connected to the network. Confirm or change the settings for your device and then click "Done". Your device is now setup and ready to use!



You can now use the app to add voice control (see pg 8), adjust settings, create custom lighting effects, set schedules, and more!

HOW TO USE

Your Orb+ can be easily controlled by the controller, tap control, using the **MONSTER SMART** app to access advanced and customizable lighting effects, or by using a compatible voice assistant product (see page 8).

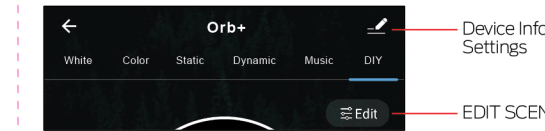
BUTTON CONTROL



- POWER:** press and hold 3 sec to power on or off your device
- BRIGHTNESS:** when on, press to cycle between min, low, mid, max brightness
- TAP ON/OFF:** double press to enable or disable tap control function (light will flash to confirm)
- SCENES:** press to change between preset scenes in Static, Dynamic, Music, and DIY or access the custom edits of those scenes, requires Wi-Fi pairing and app)
- RESET:** press and hold to reset the device and to pair to your Wi-Fi network

APP CONTROL: SCENES

Open the **MONSTER SMART** app and click on your device from the list of available paired devices.



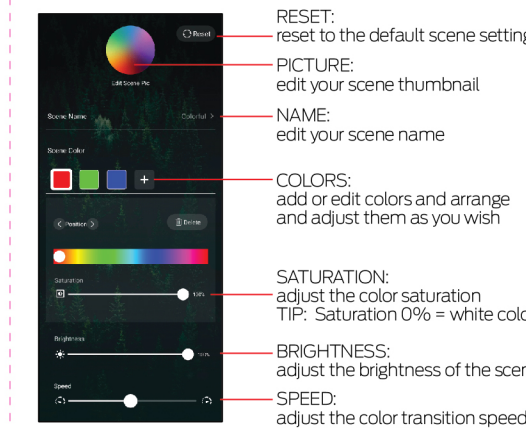
WHITE: Multiwhite selector wheel and buttons with brightness adjust
COLOR: Multicolor selector wheel and buttons with brightness adjust
STATIC: Customizable static color scenes with color selectors and brightness adjust. Each Static scene has it's own unique pattern.
DYNAMIC: Flowing multicolor scenes with brightness/speed adjust
MUSIC: Sound reactive multicolor scenes with mic sensitivity adjust
DIY: Customizable flowing multicolor scenes with color selectors, brightness and speed adjust. Each DIY scene has it's own unique flowing pattern. Create and save your favorites!

TAP CONTROL

Your Orb+ is equipped with a vibration sensor so it can be controlled with just a tap! Simply tap firmly on the top of the Orb+ to change between preset scenes in Static, Dynamic, Music, and DIY modes.



EDIT SCENES



- RESET:** reset to the default scene settings
- PICTURE:** edit your scene thumbnail
- NAME:** edit your scene name
- COLORS:** add or edit colors and arrange and adjust them as you wish
- SATURATION:** adjust the color saturation TIP: Saturation 0% = white color
- BRIGHTNESS:** adjust the brightness of the scene
- SPEED:** adjust the color transition speed

GROUPING DEVICES

Your Orb+ is great to use in multiples, you can control each separately or easily group multiple lights together in the app to control them all as one. Click on the settings button in the upper right corner and then click "Create Group" to group your devices.



NOTE: Grouping different Monster Smart Illuminescence devices with different features may cause communication issues when selecting Scenes. For best results create groups of the same products. If you would like to group together different items, it is recommended to control using the Color settings only, rather than Scenes.