

**Shenzhen Yishengbang Technology Co., Ltd**

**深圳市亿圣邦科技有限公司**

**样 品 承 认 书**

**SPECIFICATION FOR APPROVAL**

Model : WIFI:SLK-ZKXC-2525B-L-801-B

Shenzhen Yishengbang Technology Co., Ltd

Room 101, Building C, Qianwan Ying technology Park, Gushu, Xixiang, Baoan district, 518000, Guangdong, China

Tel.: 18025305599

Tel.: 18666299104

# WIFI Antenna (2525B)

## 1. Explanation of Product number :

**S L K - Z K X C - 2 5 2 5 B - L - 8 0 I - B**

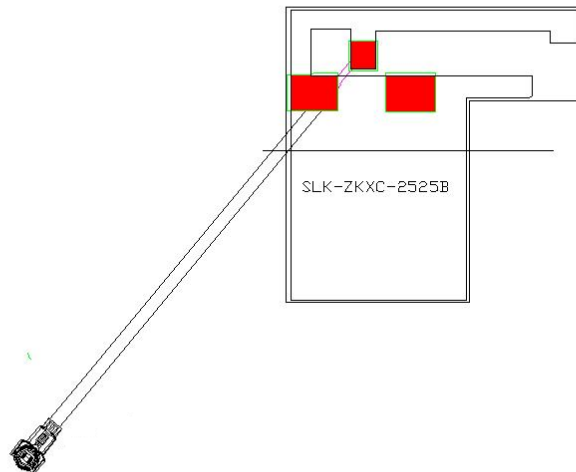
**1**

**2**

**3**

**4**

**5**



Product Code:

(1) Customer:

AKXC:

(2) Project:

2525B: SLK-ZKXC-2525B (WIFI antenna)

(3) Welding Position

L:Left

(4) Cable Length:

80I: 80\*1.13MM

(5)Cable Color

B: Black

## 2. Features

- \*Stable and reliable in performances
- \*Compact size
- \*RoHS compliance

## 3. Applications

- \* IEEE802.11 (b/g/n)
- \* Hand-held devices when WIFI (802.11b/g/n) functions are needed

## 4. Description

Holy bond's FPC antenna series are specially designed for WIFI (802.11b/g/n) applications. Based on Holy bond's proprietary design and processes, this FPC antenna has excellent stability and sensitivity to consistently provide high signal reception efficiency.

## 5. Electrical Specifications

### 5-1

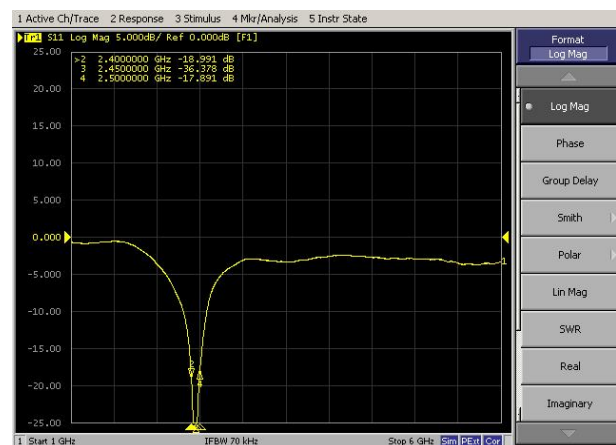
Characteristics	Specifications	Unit
Outline Dimensions	25.18x25x 0.12	mm
Center Frequency	2.4-2.5	GHz
Bandwidth(under-10dB return loss)	130min	MHz
VSWR	2max	
Impedance	50	$\Omega$
Polarization	Linear Polarization	

### 5-2.

#### VSWR



#### S11

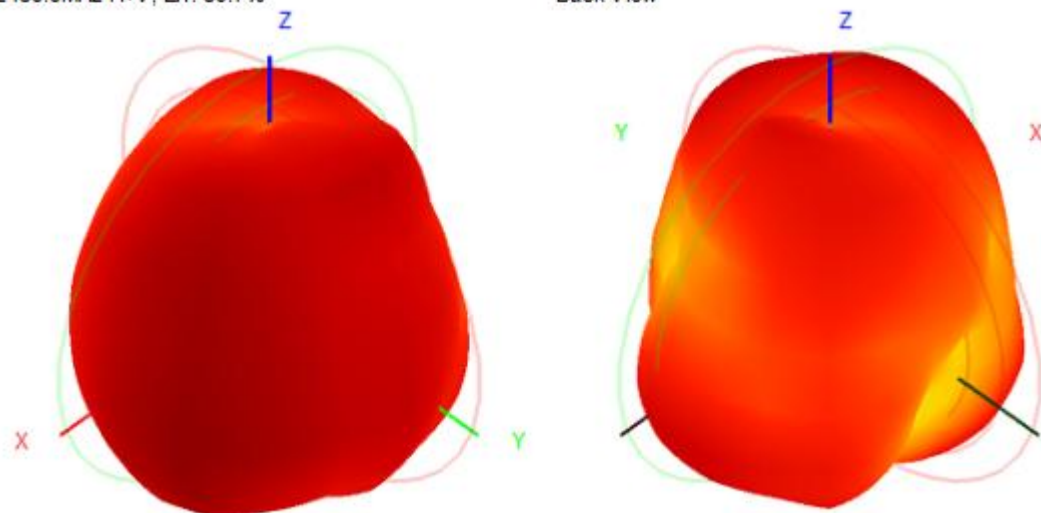


### 5-3.WIFI +BT Antenna Gain/Efficiency/Radiation Pattern of 3D

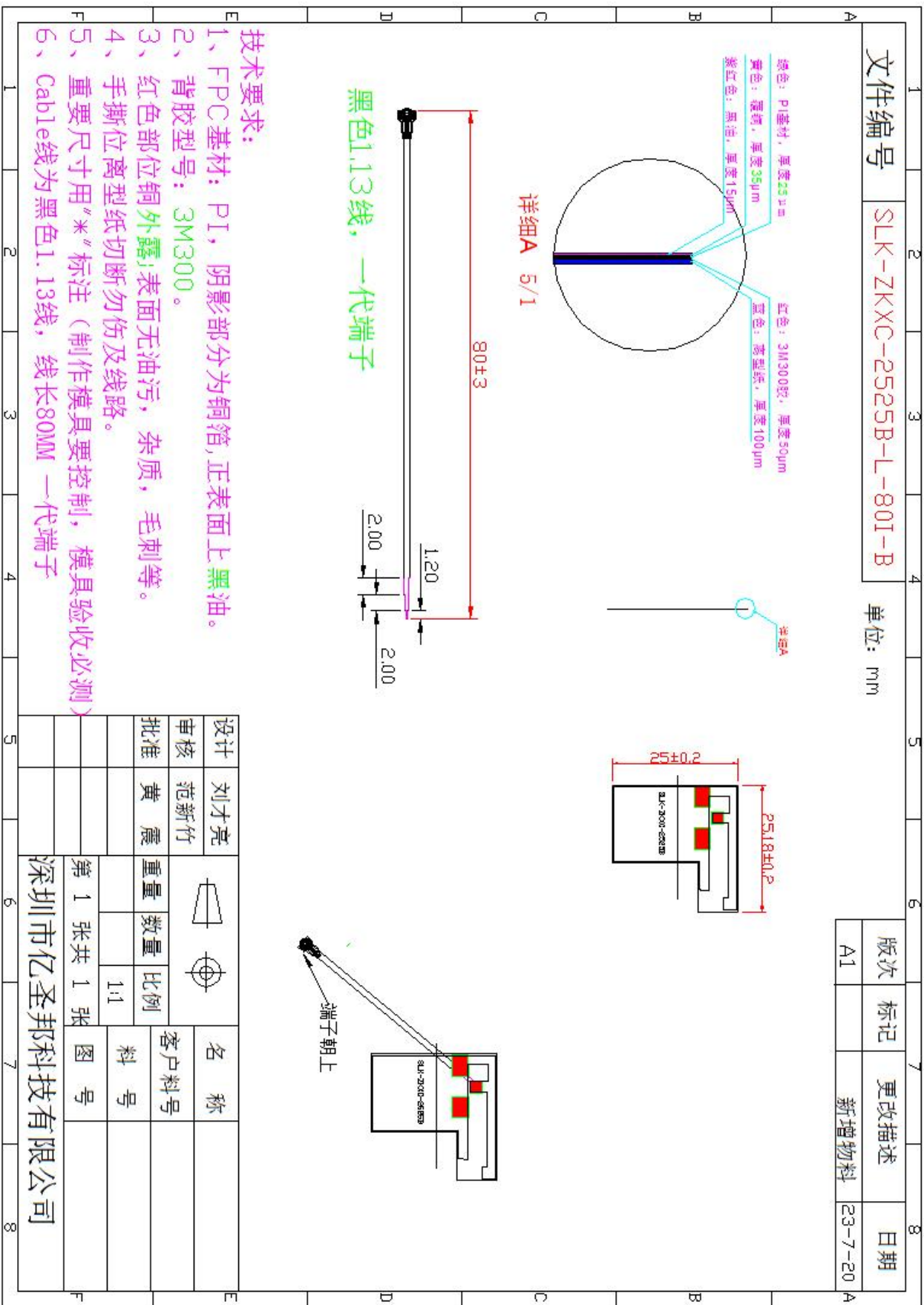
Frequency (MHz)	2400.0	2410.0	2420.0	2430.0	2440.0	2450.0	2460.0	2470.0	2480.0	2490.0	2500.0
Efficiency (dBi)	-2.35	-2.22	-2.32	-2.16	-2.27	-2.32	-2.31	-2.41	-2.26	-2.19	-2.34
Gain (dBi)	1.78	1.99	2.04	2.14	2.15	2.03	2.33	2.15	2.43	2.41	2.25
Efficiency (%)	58.19	60.03	58.59	60.80	59.28	58.66	58.81	57.39	59.48	60.44	58.37

2450.0MHz H+V, Eff: 58.7%

Back View



6. Antenna Dimensions (unit: mm)



## 7. Antenna Picture

