

BLE PERSONAL SECURITY DEVICE



CUSTOM DESIGN FOR REVOLAR



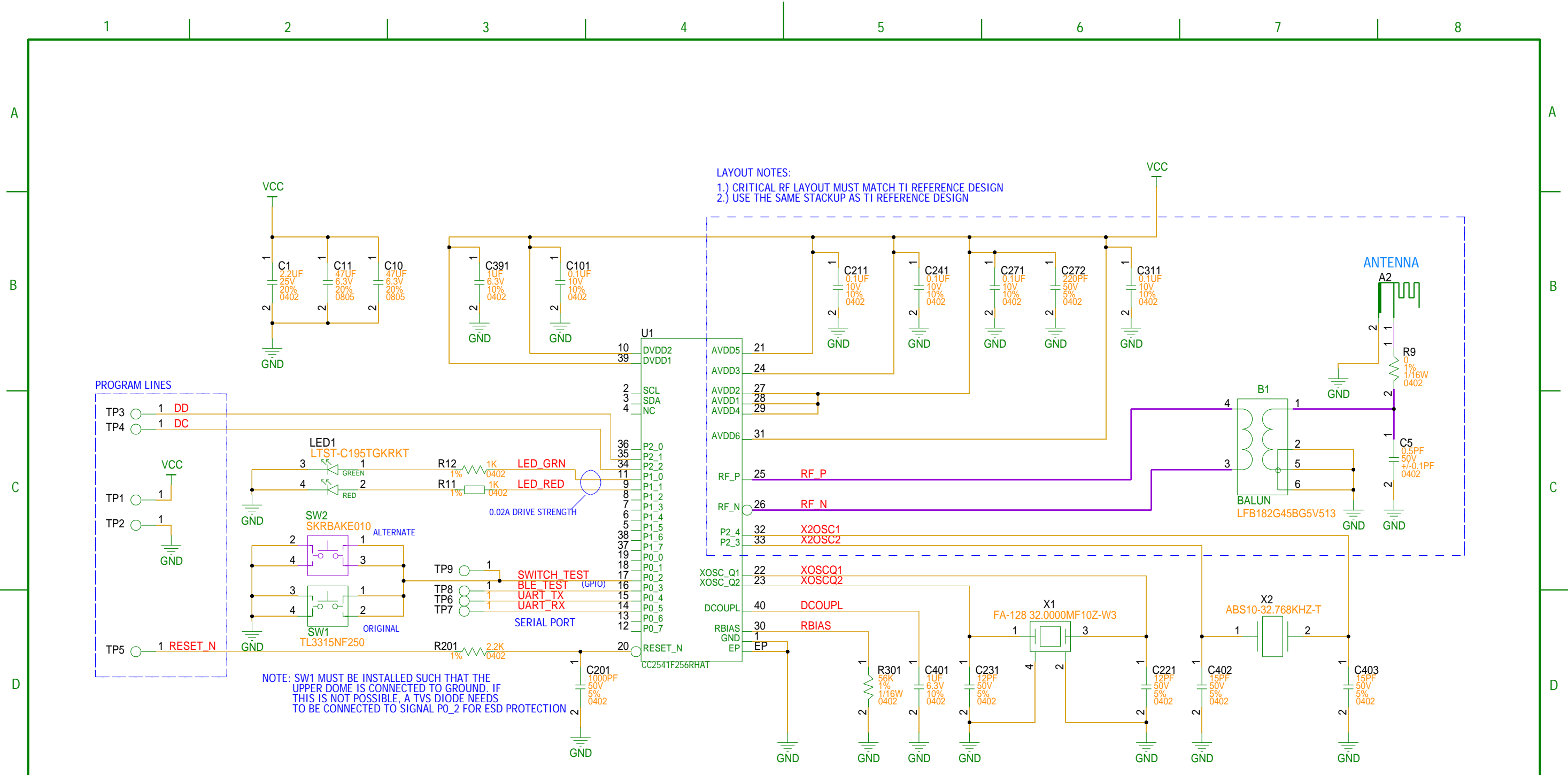
REVISION HISTORY

| REV NO. | DATE | DETAILS |
|---------|--------------|--|
| 0.1 | SEP. 3, 2015 | FIRST RELEASE |
| 0.2 | SEP. 5, 2015 | ADDED TP FOR SERIAL CONSOLE CHANGED LED TO BI-COLOR |
| 0.3 | SEP. 8, 2015 | ADDED TRACEABILITY PAD (DNI) |
| 2.0 | OCT.14, 2015 | SECOND RELEASE FOR PROTO-2 |

[CONFIDENTIAL]

THIS DOCUMENT CONTAINS TRADE SECRETS AND OTHER PROPRIETARY INFORMATION OF CELESTICA THAILAND TO WHICH CELESTICA THAILAND RETAINS AN EXCLUSIVE RIGHT OF REPRODUCTION, MANUFACTURE, LICENSE AND SALE. THIS DOCUMENT IS SUBMITTED IN CONFIDENCE FOR THE USE OF THE RECIPIENT ONLY FOR THE PURPOSES OF WHICH CELESTICA HAS PROVIDED IT AND FOR NO OTHER PURPOSE, AND IT MAY NOT BE DISCLOSED TO THIRD PARTIES UNLESS PERMISSION TO DO SO IS EXPRESSLY GRANTED IN WRITING BY CELESTICA.

| | | | |
|---|---------------|---|--|
| Title: Revolar Personal Security Device | | Document Number: PT200-B0041-02SC | |
| Design Name: | | Type: Circuit Diagram | |
| Date: December 11, 2015 | SHEET: 1 of 2 | Celestica Thailand | |



LAYOUT NOTES:
 1.) CRITICAL RF LAYOUT MUST MATCH TI REFERENCE DESIGN
 2.) USE THE SAME STACKUP AS TI REFERENCE DESIGN

NOTE: SW1 MUST BE INSTALLED SUCH THAT THE UPPER DOME IS CONNECTED TO GROUND. IF THIS IS NOT POSSIBLE, A TVS DIODE NEEDS TO BE CONNECTED TO SIGNAL P0_2 FOR ESD PROTECTION

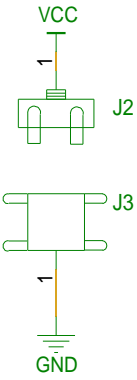
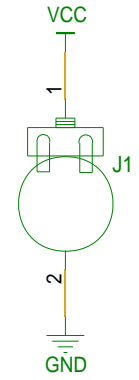
LABEL

 TRACEABILITY PAD (SMT)

CR2032 BATTERY CONTACT OPTIONS:

OPTION #1: SAME AS PROTO-1

OPTION #2: SEPARATE POSITIVE AND NEGATIVE BATTERY CONTACT



[CONFIDENTIAL]
 THIS DOCUMENT CONTAINS TRADE SECRETS AND OTHER PROPRIETARY INFORMATION OF CELESTICA THAILAND TO WHICH CELESTICA THAILAND RETAINS AN EXCLUSIVE RIGHT OF REPRODUCTION, MANUFACTURE, LICENSE AND SALE. THIS DOCUMENT IS SUBMITTED IN CONFIDENCE FOR THE USE OF THE RECIPIENT ONLY FOR THE PURPOSES OF WHICH CELESTICA HAS PROVIDED IT AND FOR NO OTHER PURPOSE, AND IT MAY NOT BE DISCLOSED TO THIRD PARTIES UNLESS PERMISSION TO DO SO IS EXPRESSLY GRANTED IN WRITING BY CELESTICA.

| | | | |
|---|---------------|---|--|
| Title: Revolar Personal Security Device | | Document Number: PT200-B0041-02SC | |
| Design Name: | | Type: Circuit Diagram | |
| Date: December 11, 2015 | SHEET: 2 of 2 | Celestica Thailand | |