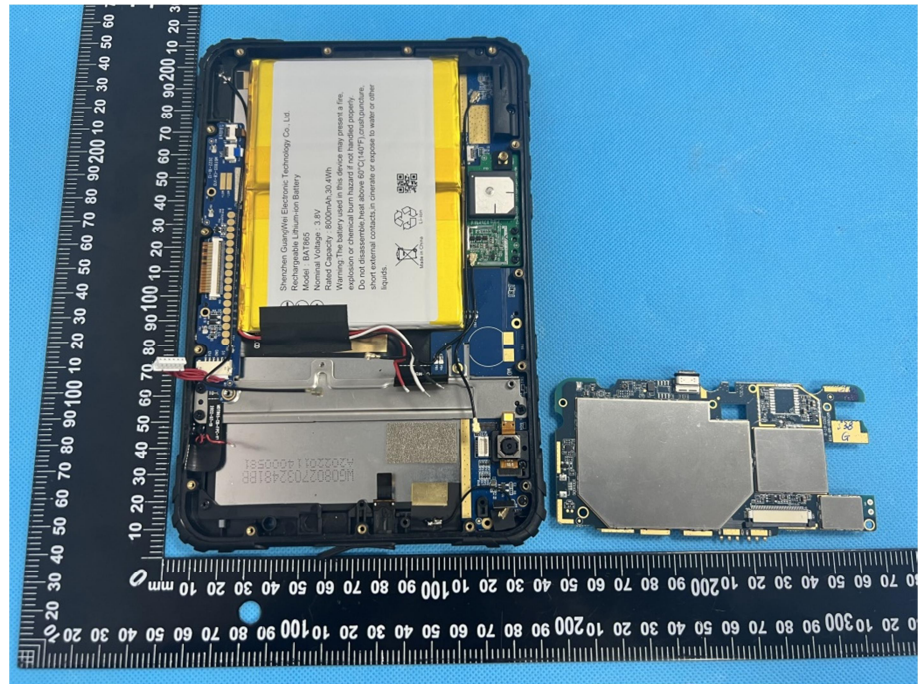


EXHIBIT 3 - EUT INTERNAL PHOTOGRAPHS

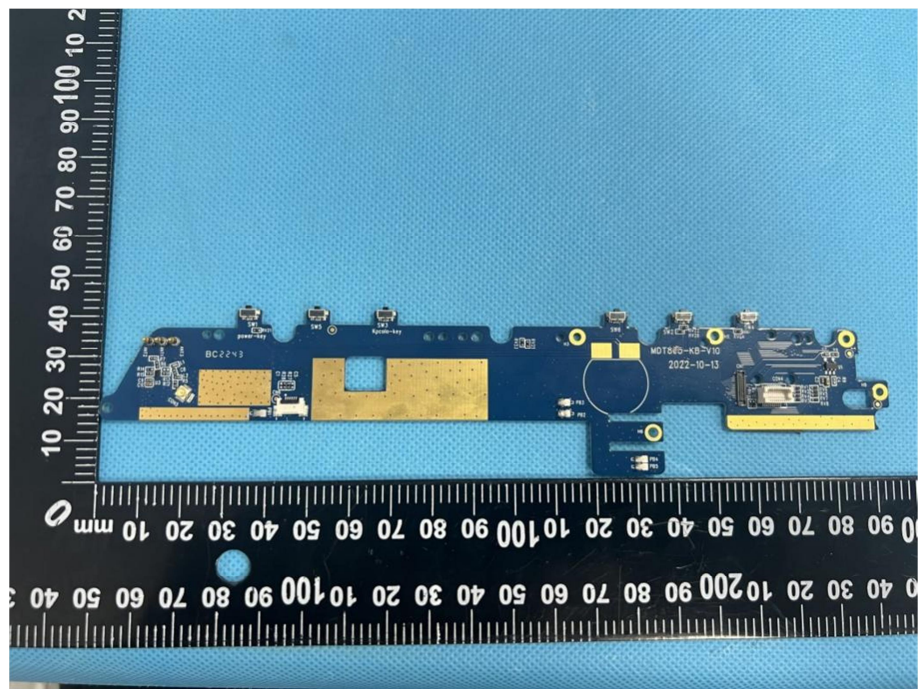
EUT Housing and Board View 1



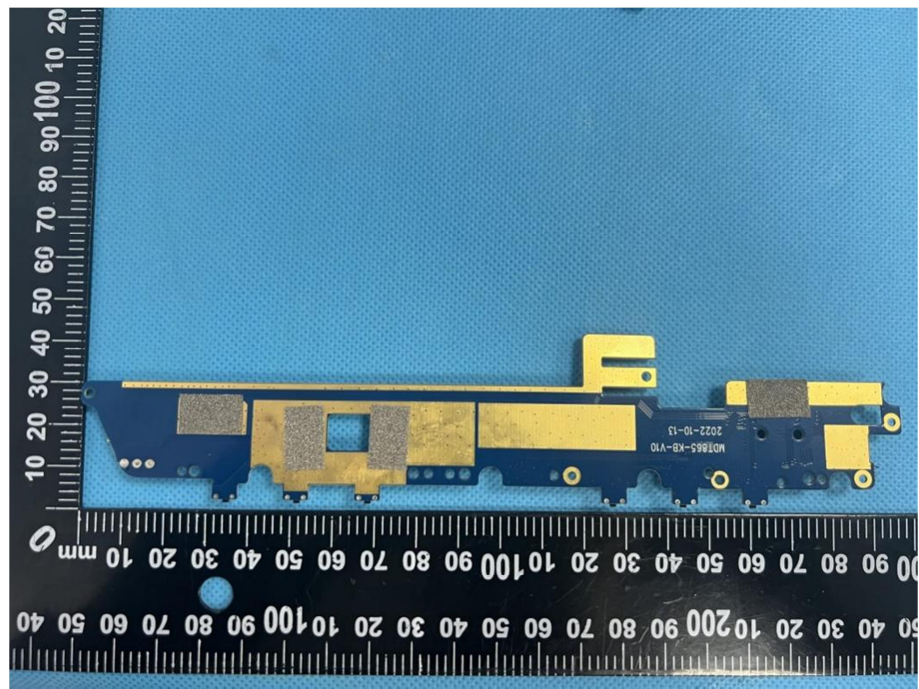
EUT Housing and Board View 2

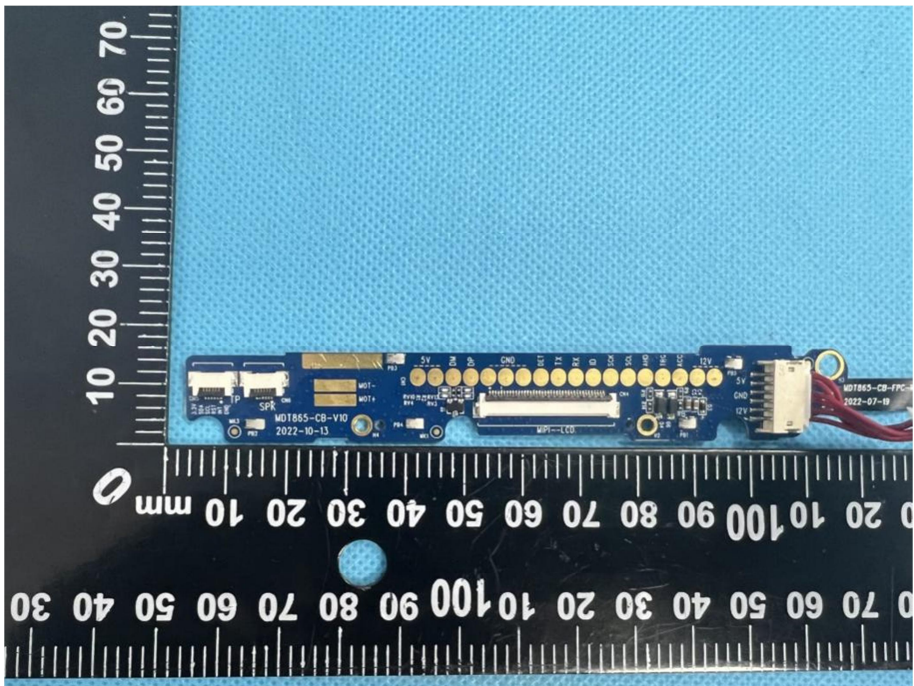
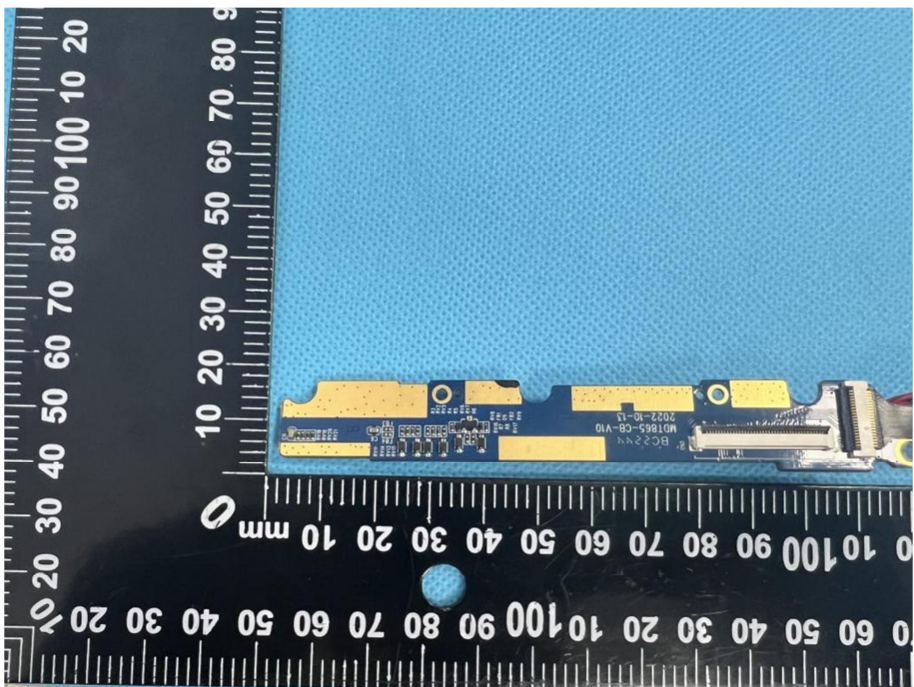


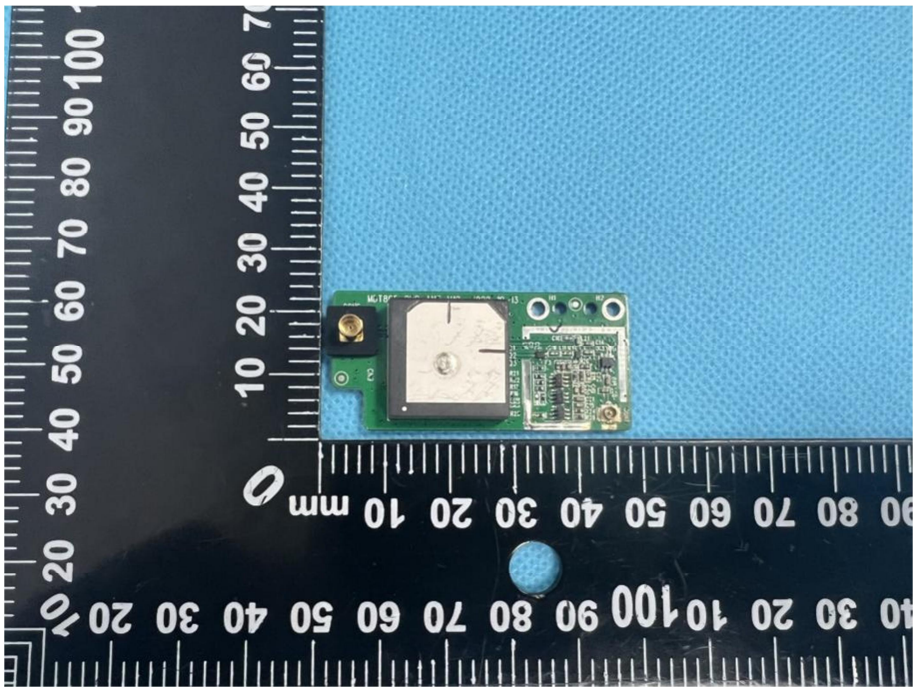
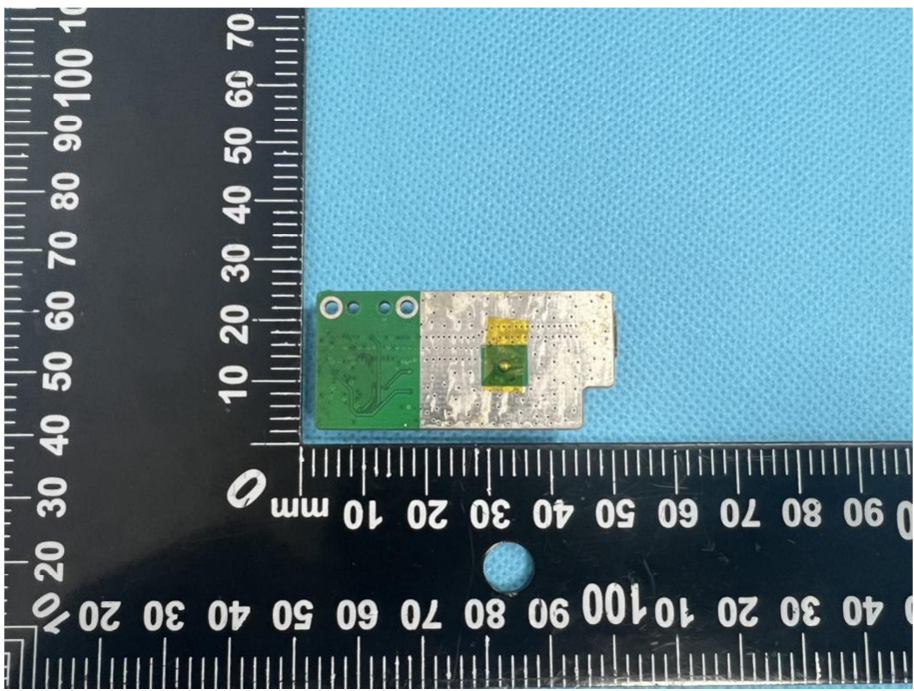
**Solder
Board-Component
View 1**



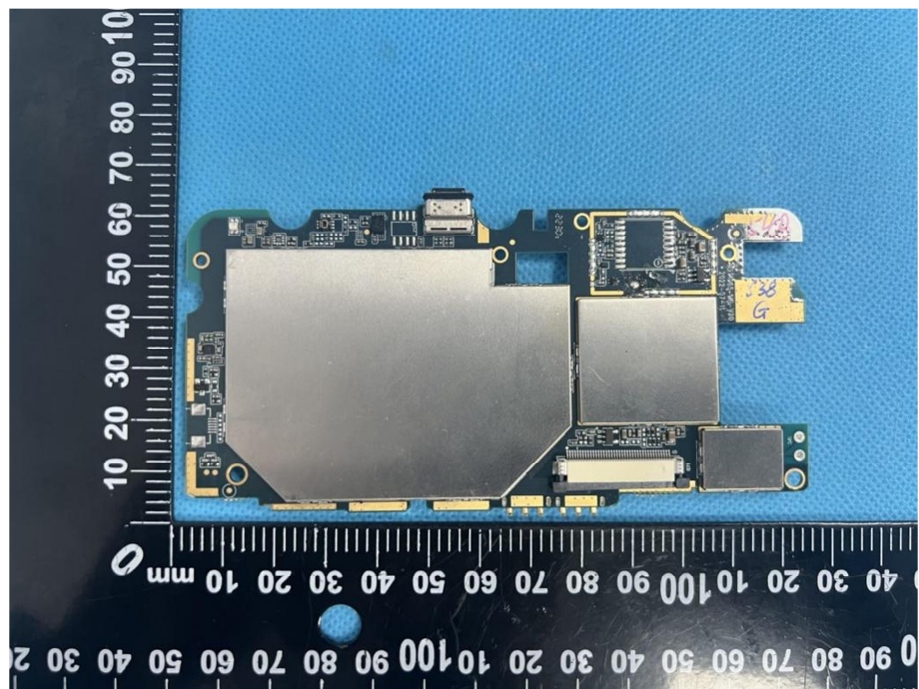
**Solder
Board-Component
View 2**



<p>Solder Board-Component View 3</p>	 <p>A photograph showing the top surface of a blue printed circuit board (PCB) component. The board is positioned horizontally against a black ruler with white markings in millimeters. The ruler shows measurements from 0 to 100 mm. The PCB has various components, including a connector on the left, a central component with a gold-colored surface, and a connector on the right. Text on the board includes "MD1865-CB-V10" and "2022-10-13". A small blue circular mark is visible on the ruler below the board.</p>
<p>Solder Board-Component View 4</p>	 <p>A photograph showing the bottom surface of the same blue PCB component. The board is positioned horizontally against a black ruler with white markings in millimeters. The ruler shows measurements from 0 to 100 mm. The PCB has a gold-colored surface on the left side and a connector on the right. Text on the board includes "MD1865-CB-V10" and "2022-10-13". A small blue circular mark is visible on the ruler below the board.</p>

<p>Solder Board-Component View 5</p>	 <p>A photograph showing a small green printed circuit board (PCB) component, likely a solder mask or a small board component, placed on a blue textured surface. The component is rectangular with a central square area that is white and appears to be a solder mask or a specific component. It has several small circular holes and a larger rectangular area. A black ruler with white markings is visible in the background, showing measurements in millimeters. The ruler is oriented vertically and horizontally, with the vertical scale on the left and the horizontal scale at the bottom. The component is positioned near the 10 mm mark on the vertical scale and the 30 mm mark on the horizontal scale.</p>
<p>Solder Board-Component View 6</p>	 <p>A photograph showing the same small green PCB component from a different perspective. The component is rectangular with a central square area that is white and appears to be a solder mask or a specific component. It has several small circular holes and a larger rectangular area. A black ruler with white markings is visible in the background, showing measurements in millimeters. The ruler is oriented vertically and horizontally, with the vertical scale on the left and the horizontal scale at the bottom. The component is positioned near the 10 mm mark on the vertical scale and the 30 mm mark on the horizontal scale.</p>

**Solder
Board-Component
View 7**



**Solder
Board-Component
View 8**

