

MEASUREMENT 4

Type: Validation measurement (Fast, 75.00 %)

Date of measurement: 2023-01-11

Measurement duration: 12 minutes 21 seconds

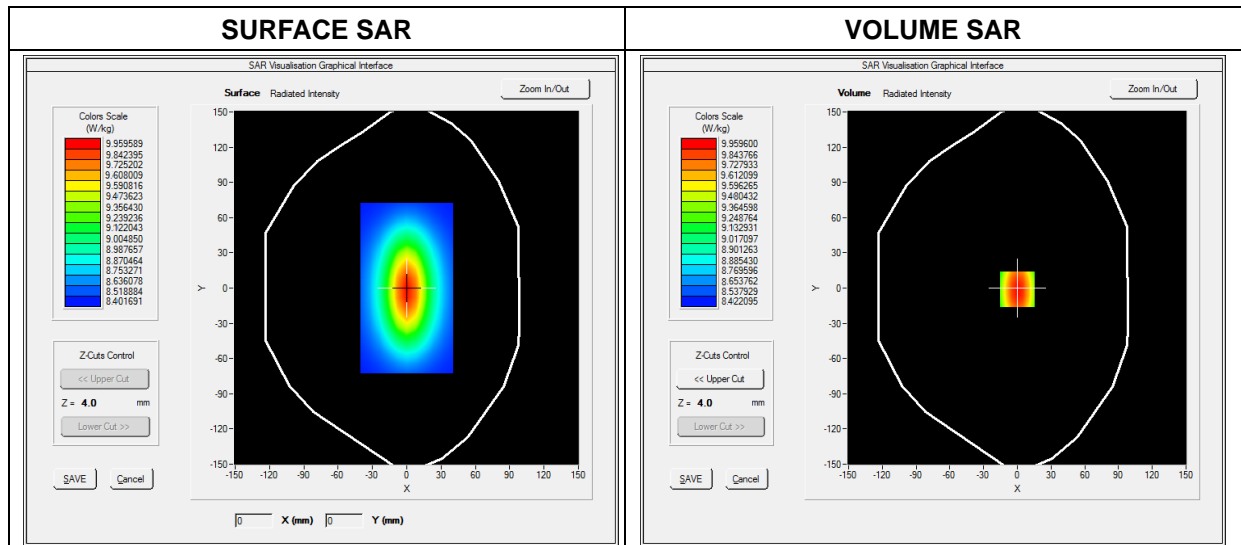
E-field Probe: SSE2 - SN 18/21 EPGO356; ConvF: 2.30; Calibrated: 2022-07-08

A. Experimental conditions

Area Scan	dx=8mm dy=8mm
Zoom Scan	dx=5mm dy=5mm dz=4mm
Phantom	Validation plane
Device Position	Dipole
Band	CW1900
Signal	CW (Crest factor: 1.0)

B. SAR Measurement Results

Frequency (MHz)	1900.00000
Relative Permittivity (real part)	54.130257
Conductivity (S/m)	1.533485
Power Variation (%)	1.112025
Ambient Temperature	22.3
Liquid Temperature	22.3

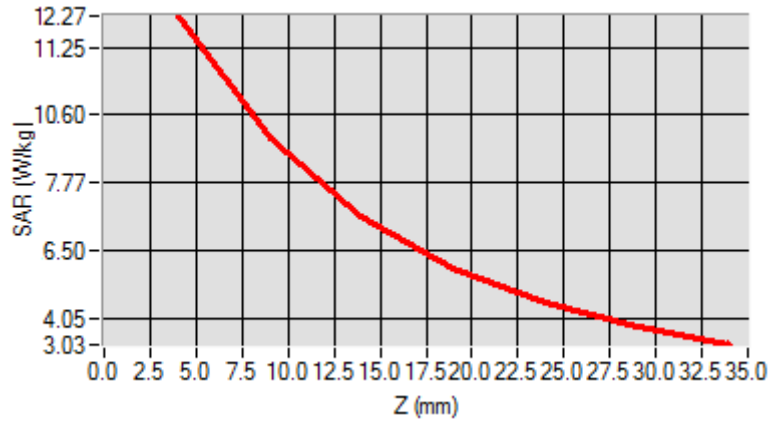


Maximum location: X=0.00, Y=0.00

SAR 10g (W/Kg)	5.271250
SAR 1g (W/Kg)	9.901250

Z Axis Scan

Z (mm)	0.00	4.00	9.00	14.00	19.00	24.00	29.00
SAR (W/Kg)	0.0000	12.1250	10.3114	8.4212	6.4041	5.3425	3.3642



3D screen shot	Hot spot position

MEASUREMENT 5

Type: Validation measurement (Fast, 75.00 %)

Date of measurement: 2023-01-12

Measurement duration: 12 minutes 21 seconds

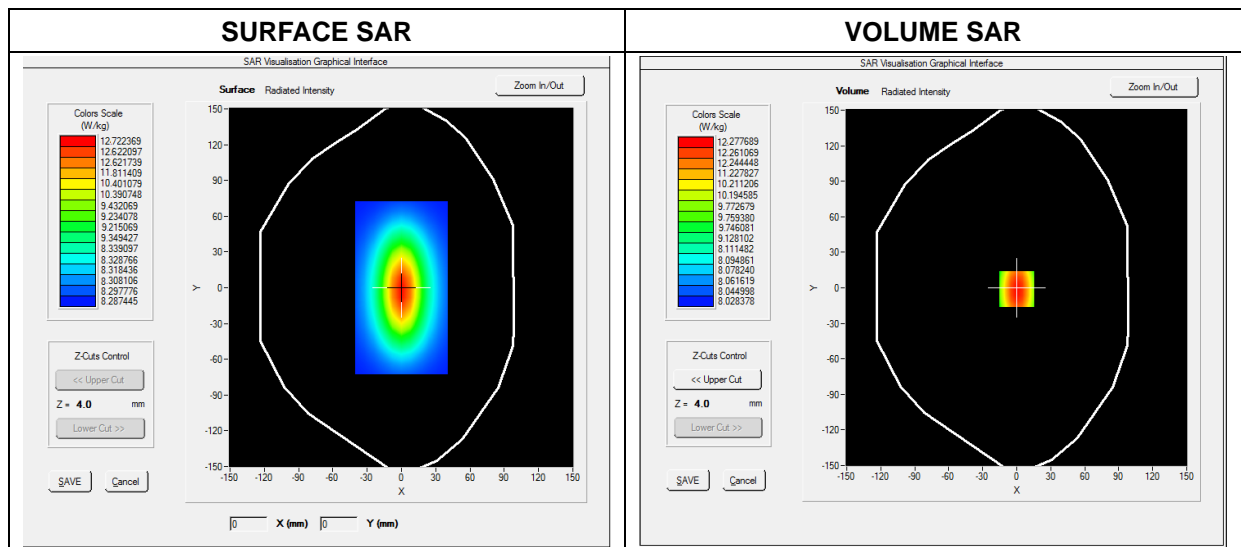
E-field Probe: SSE2 - SN 18/21 EPGO356; ConvF: 2.60; Calibrated: 2022-07-08

A. Experimental conditions

Area Scan	dx=8mm dy=8mm
Zoom Scan	dx=5mm dy=5mm dz=4mm
Phantom	Validation plane
Device Position	Dipole
Band	CW2300
Signal	Duty Cycle 1:1

B. SAR Measurement Results

Frequency (MHz)	2300.000000
Relative Permittivity (real part)	54.792129
Conductivity (S/m)	1.822895
Power Variation (%)	1.074500
Ambient Temperature	22.3
Liquid Temperature	22.3

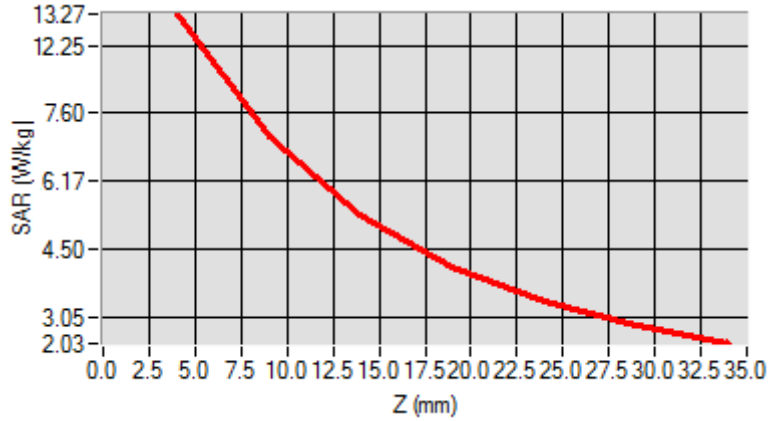


Maximum location: X=0.00, Y=0.00

SAR 10g (W/Kg)	6.114210
SAR 1g (W/Kg)	12.505243

Z Axis Scan

Z (mm)	0.00	4.00	9.00	14.00	19.00	24.00	29.00
SAR (W/Kg)	0.0000	13.1891	11.7779	9.2852	8.5315	6.3698	4.6231



3D screen shot	Hot spot position

MEASUREMENT 6

Type: Validation measurement (Fast, 75.00 %)

Date of measurement: 2023-01-13

Measurement duration: 12 minutes 21 seconds

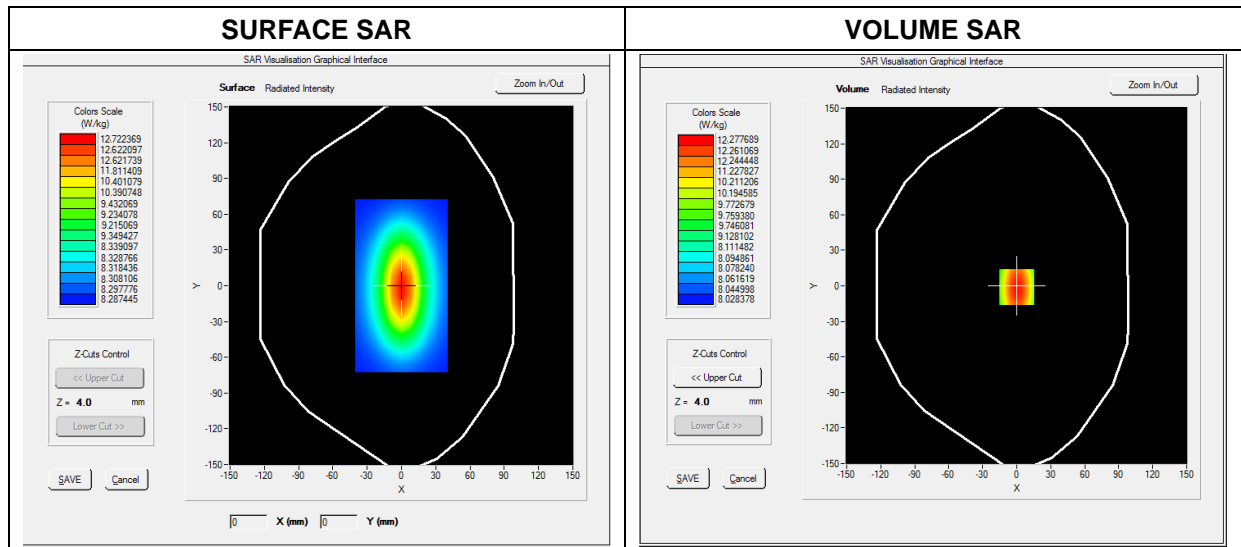
E-field Probe: SSE2 - SN 18/21 EPGO356; ConvF: 2.60; Calibrated: 2022-07-08

A. Experimental conditions

Area Scan	dx=8mm dy=8mm
Zoom Scan	dx=5mm dy=5mm dz=4mm
Phantom	Validation plane
Device Position	Dipole
Band	CW2450
Signal	CW (Crest factor: 1.0)

B. SAR Measurement Results

Frequency (MHz)	2450.000000
Relative Permittivity (real part)	53.572185
Conductivity (S/m)	1.930296
Power Variation (%)	1.419622
Ambient Temperature	22.6
Liquid Temperature	22.6

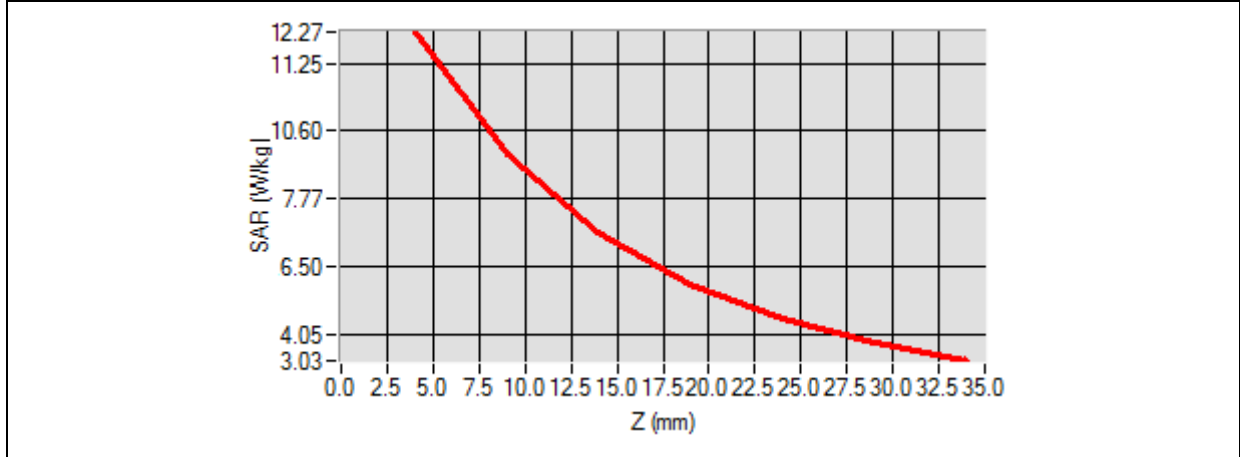


Maximum location: X=0.00, Y=0.00

SAR 10g (W/Kg)	6.152122
SAR 1g (W/Kg)	12.131201

Z Axis Scan

Z (mm)	0.00	4.00	9.00	14.00	19.00	24.00	29.00
SAR (W/Kg)	0.0000	12.1365	10.1321	8.3512	6.3365	5.5123	3.6621



3D screen shot	Hot spot position
<p>A 3D perspective view of a grey, L-shaped device. A rectangular area on the top surface is overlaid with a color-coded SAR distribution map, showing a central red/orange hot spot and a blue/cyan outer region.</p>	<p>A 2D heatmap showing the SAR distribution. The color scale ranges from blue (low SAR) to red (high SAR). The highest SAR region (red) is concentrated in the center of the device's top surface, surrounded by concentric rings of yellow, green, and cyan.</p>

MEASUREMENT 7

Type: Validation measurement (Fast, 75.00 %)

Date of measurement: 2023-01-12

Measurement duration: 12 minutes 21 seconds

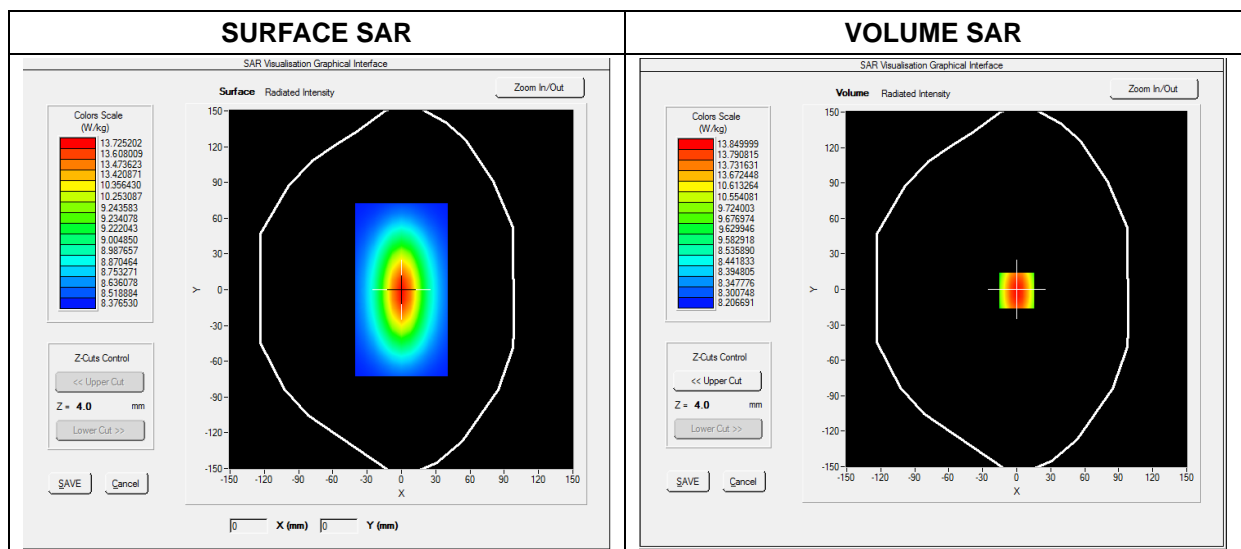
E-field Probe: SSE2 - SN 18/21 EPG0356; ConvF: 2.41; Calibrated: 2022-07-08

A. Experimental conditions

Area Scan	dx=8mm dy=8mm
Zoom Scan	dx=5mm dy=5mm dz=4mm
Phantom	Validation plane
Device Position	Dipole
Band	CW2600
Signal	Duty Cycle 1:1

B. SAR Measurement Results

Frequency (MHz)	2600.000000
Relative Permittivity (real part)	53.273921
Conductivity (S/m)	2.093185
Power Variation (%)	1.602158
Ambient Temperature	22.6
Liquid Temperature	22.6

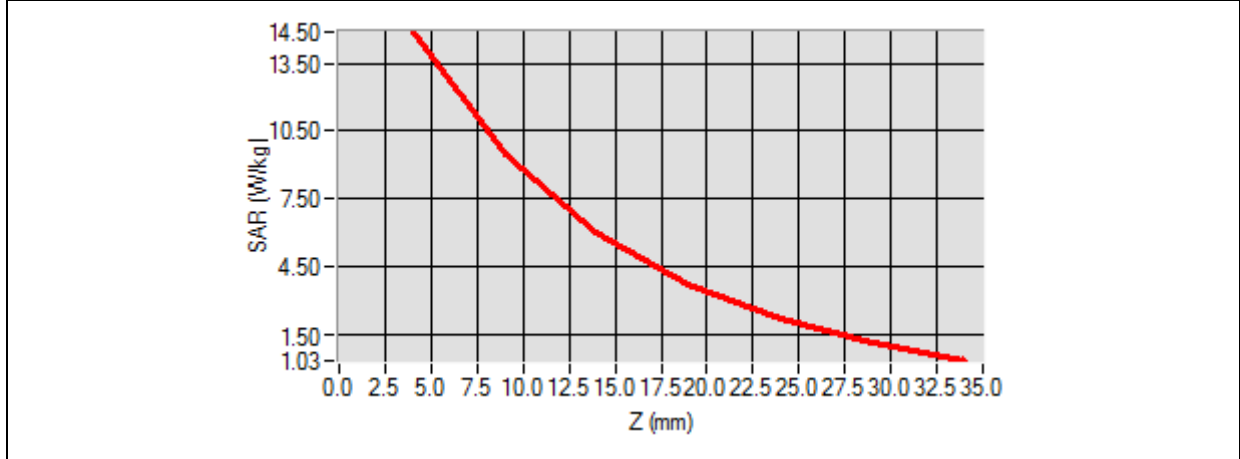


Maximum location: X=0.00, Y=0.00

SAR 10g (W/Kg)	8.230801
SAR 1g (W/Kg)	13.539282

Z Axis Scan

Z (mm)	0.00	4.00	9.00	14.00	19.00	24.00	29.00
SAR (W/Kg)	0.0000	14.0426	12.1354	10.2965	7.4854	5.9354	4.5186



3D screen shot	Hot spot position

Annex B. Plots of SAR Measurement

MEASUREMENT 1

Type: Phone measurement (Complete)
 Date of measurement: 2023-01-10
 Measurement duration: 11 minutes 48 seconds

A. Experimental conditions

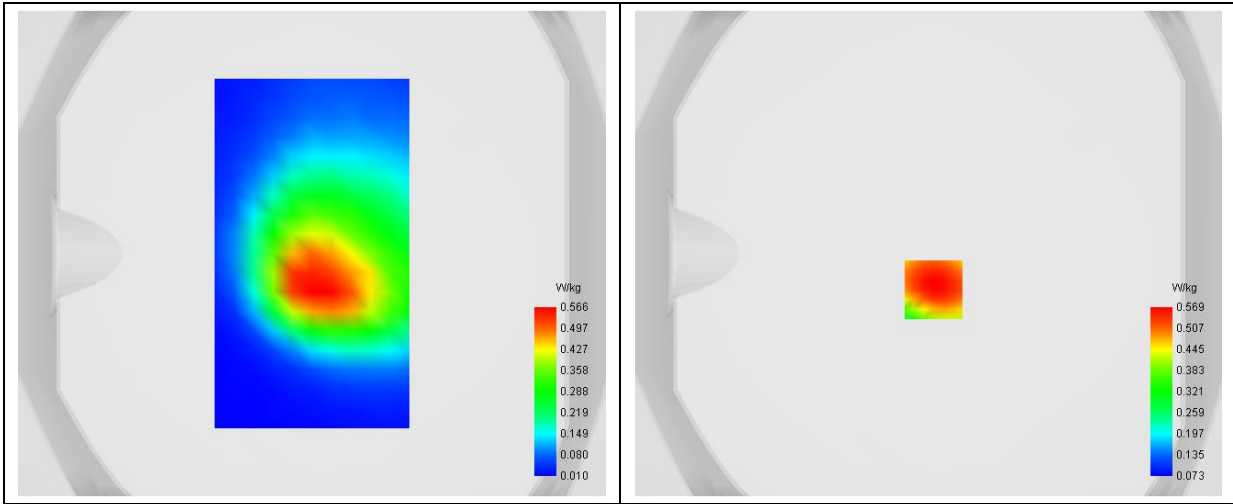
Area Scan	dx=8mm dy=8mm
Zoom Scan	dx=4mm dy=4mm dz=2mm
Phantom	Flat Plane
Device Position	Back
Band	GPRS900_4TX
Channels	High
Signal	Duty Cycle: 1:2

B. SAR Measurement Results

Frequency (MHz)	848.800000
Relative Permittivity (real part)	56.344517
Conductivity (S/m)	0.963275
Power Variation (%)	1.460100
Ambient Temperature	22.5
Liquid Temperature	22.5

C. SAR Surface and Volume

SURFACE SAR	VOLUME SAR
--------------------	-------------------



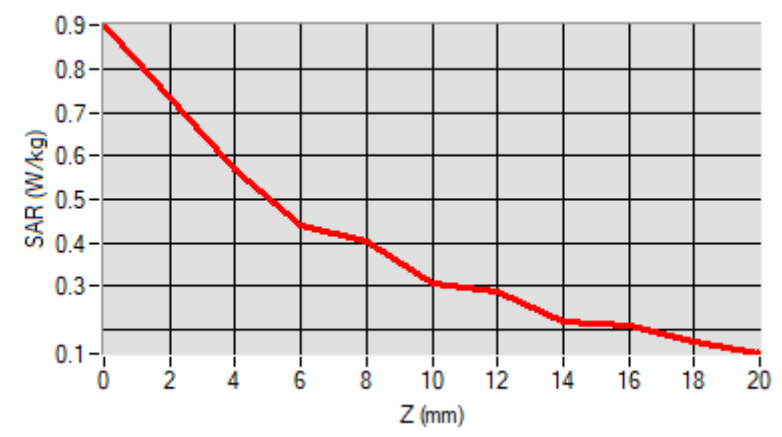
Maximum location: X=2.00, Y=-15.00

D. SAR 1g & 10g

SAR 10g (W/Kg)	0.346131
SAR 1g (W/Kg)	0.558634

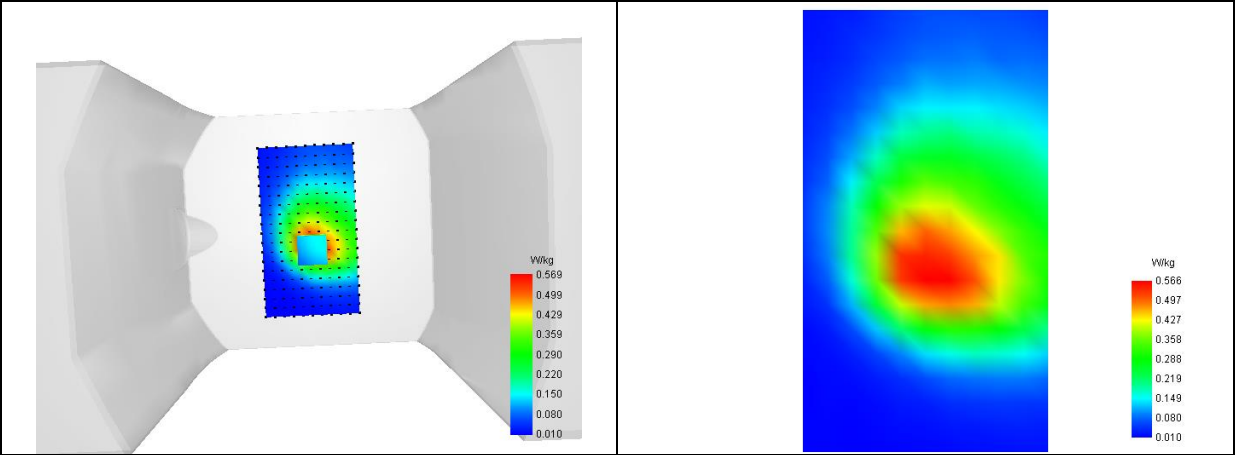
E. Z Axis Scan

Z (mm)	0.00	4.00	6.00	8.00	10.00	12.00	14.00	16.00	18.00
SAR (W/Kg)	0.9021	0.5688	0.4394	0.4040	0.3046	0.2897	0.2166	0.2077	0.1746



F. 3D Image

3D screen shot	Hot spot position
----------------	-------------------



MEASUREMENT 2

Type: Phone measurement (Complete)
 Date of measurement: 2023-01-11
 Measurement duration: 11 minutes 48 seconds

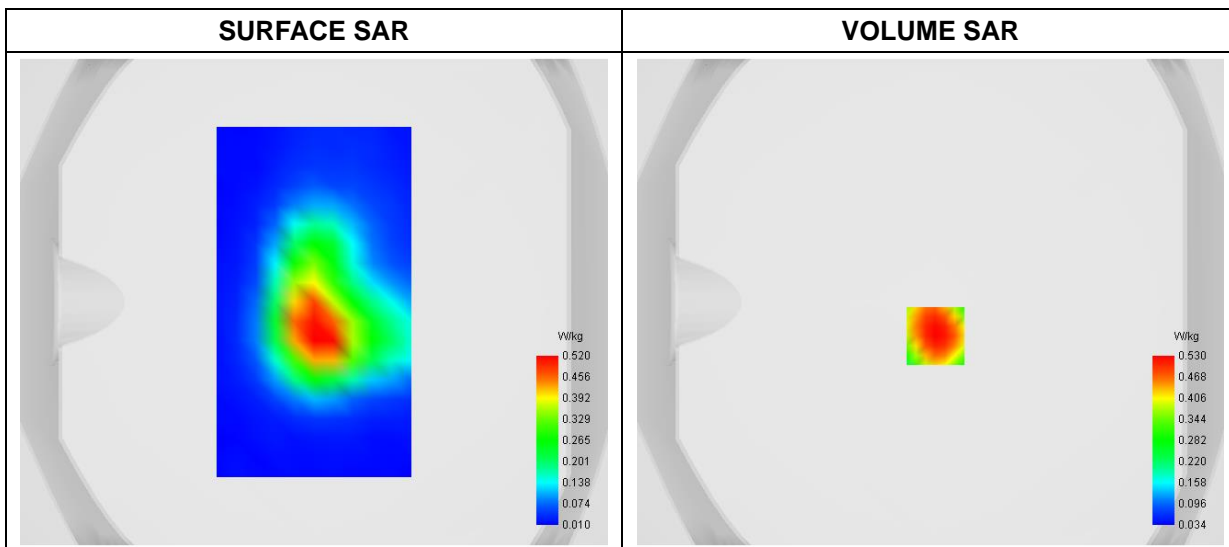
A. Experimental conditions

Area Scan	dx=8mm dy=8mm
Zoom Scan	dx=4mm dy=4mm dz=2mm
Phantom	Flat Plane
Device Position	Back
Band	GPRS1800_4TX
Channels	Low
Signal	Duty Cycle: 1:2

B. SAR Measurement Results

Frequency (MHz)	1850.200000
Relative Permittivity (real part)	54.771249
Conductivity (S/m)	1.512336
Power Variation (%)	1.950000
Ambient Temperature	22.3
Liquid Temperature	22.3

C. SAR Surface and Volume



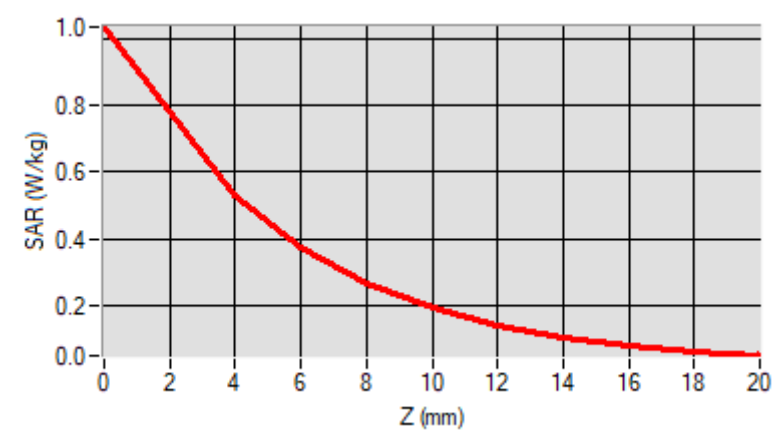
Maximum location: X=2.00, Y=-14.00

D. SAR 1g & 10g

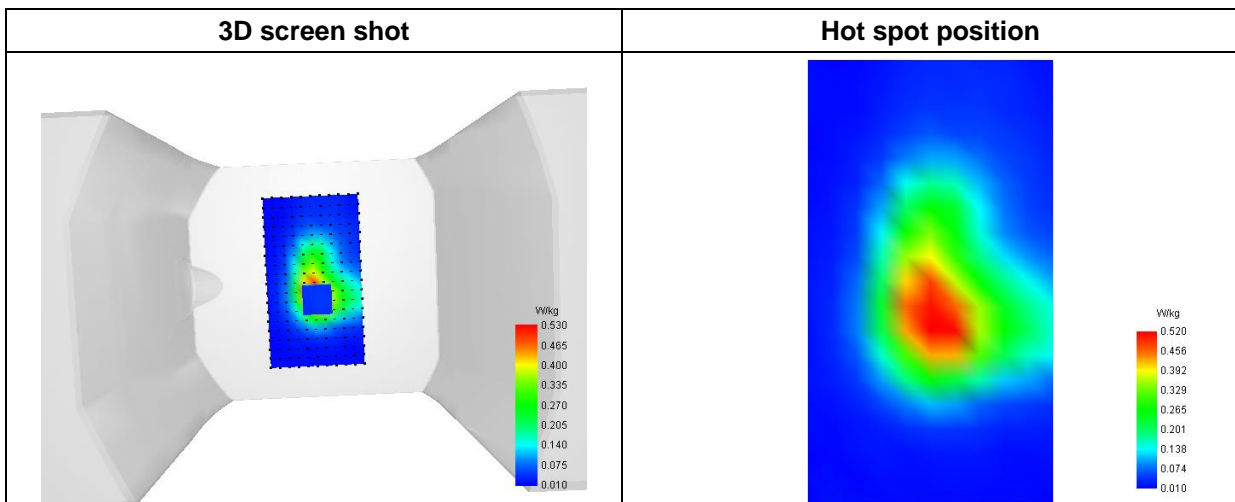
SAR 10g (W/Kg)	0.254408
SAR 1g (W/Kg)	0.510473

E. Z Axis Scan

Z (mm)	0.00	4.00	6.00	8.00	10.00	12.00	14.00	16.00	18.00
SAR (W/Kg)	1.0364	0.5298	0.3747	0.2646	0.1898	0.1391	0.1042	0.0797	0.0616



F. 3D Image



MEASUREMENT 3

Type: Phone measurement (Complete)
 Date of measurement: 2023-01-11
 Measurement duration: 12 minutes 3 seconds

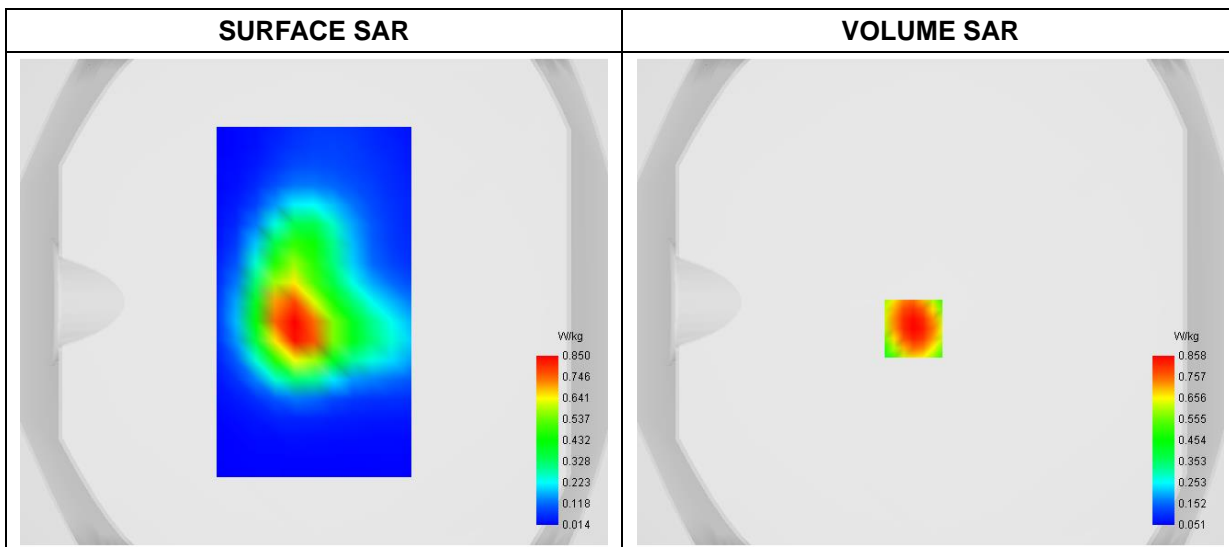
A. Experimental conditions

Area Scan	dx=8mm dy=8mm
Zoom Scan	dx=4mm dy=4mm dz=2mm
Phantom	Flat Plane
Device Position	Back
Band	WCDMA1900_RMC
Channels	Low
Signal	Duty Cycle 1:1

B. SAR Measurement Results

Frequency (MHz)	1852.400000
Relative Permittivity (real part)	54.772473
Conductivity (S/m)	1.512363
Power Variation (%)	2.280000
Ambient Temperature	22.3
Liquid Temperature	22.3

C. SAR Surface and Volume



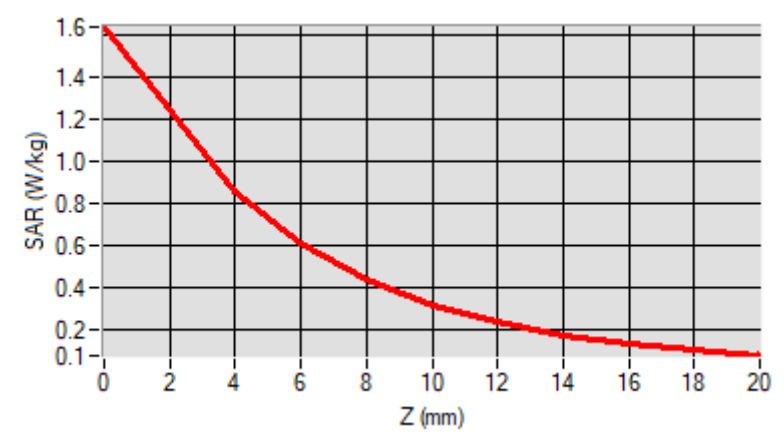
Maximum location: X=-7.00, Y=-11.00

D. SAR 1g & 10g

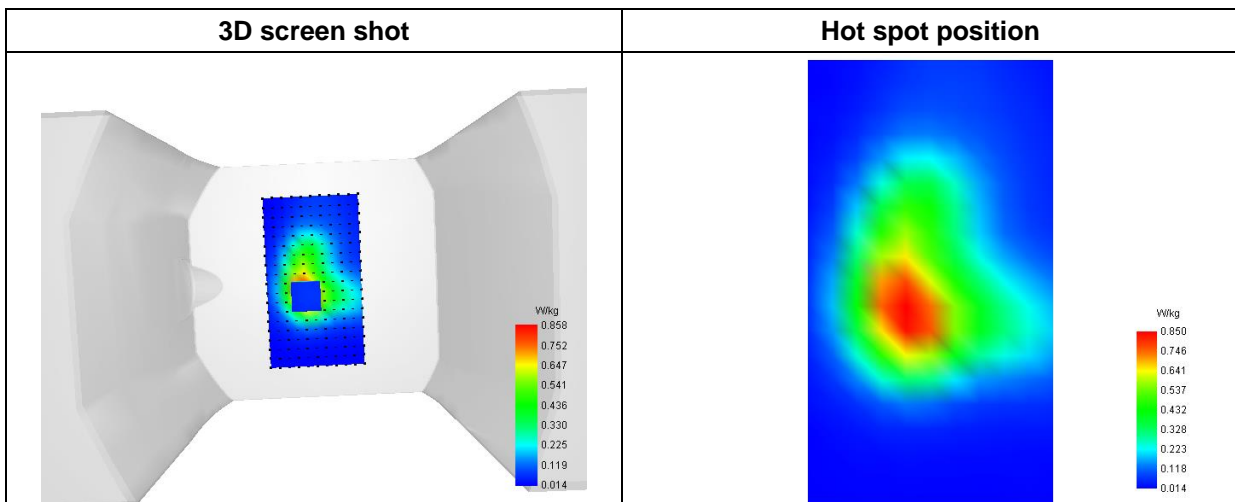
SAR 10g (W/Kg)	0.408168
SAR 1g (W/Kg)	0.819329

E. Z Axis Scan

Z (mm)	0.00	4.00	6.00	8.00	10.00	12.00	14.00	16.00	18.00
SAR (W/Kg)	1.6431	0.8575	0.6131	0.4371	0.3153	0.2309	0.1718	0.1293	0.0974



F. 3D Image



MEASUREMENT 4

Type: Phone measurement (Complete)
 Date of measurement: 2023-01-11
 Measurement duration: 12 minutes 3 seconds

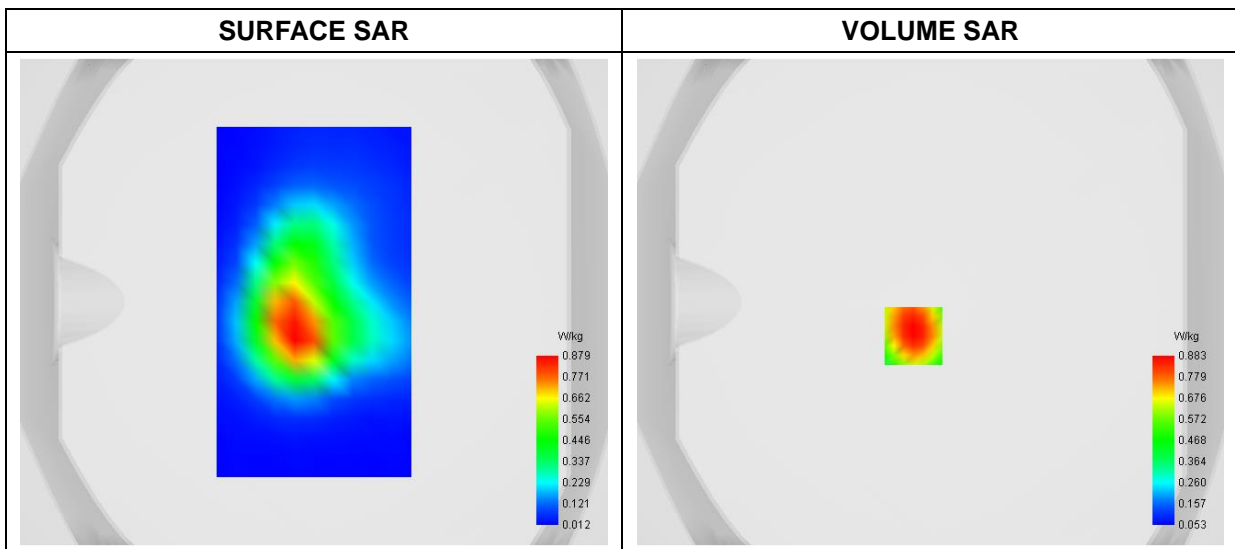
A. Experimental conditions

Area Scan	dx=8mm dy=8mm
Zoom Scan	dx=4mm dy=4mm dz=2mm
Phantom	Flat Plane
Device Position	Back
Band	WCDMA1700_RMC
Channels	High
Signal	Duty Cycle 1:1

B. SAR Measurement Results

Frequency (MHz)	1752.600000
Relative Permittivity (real part)	54.753496
Conductivity (S/m)	1.513435
Power Variation (%)	-2.150000
Ambient Temperature	22.3
Liquid Temperature	22.3

C. SAR Surface and Volume



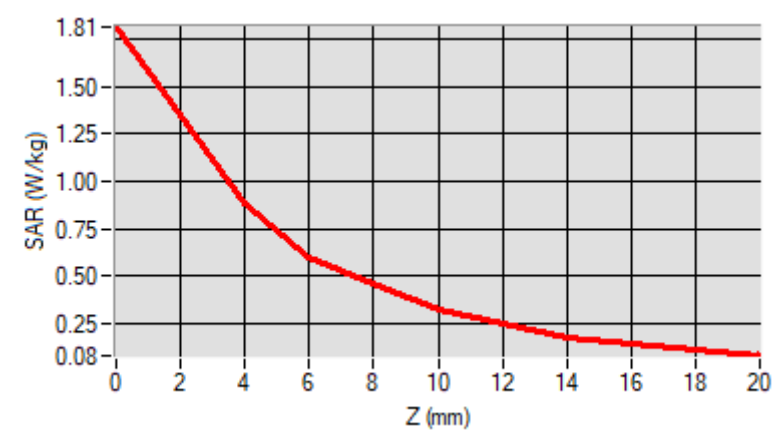
Maximum location: X=-7.00, Y=-14.00

D. SAR 1g & 10g

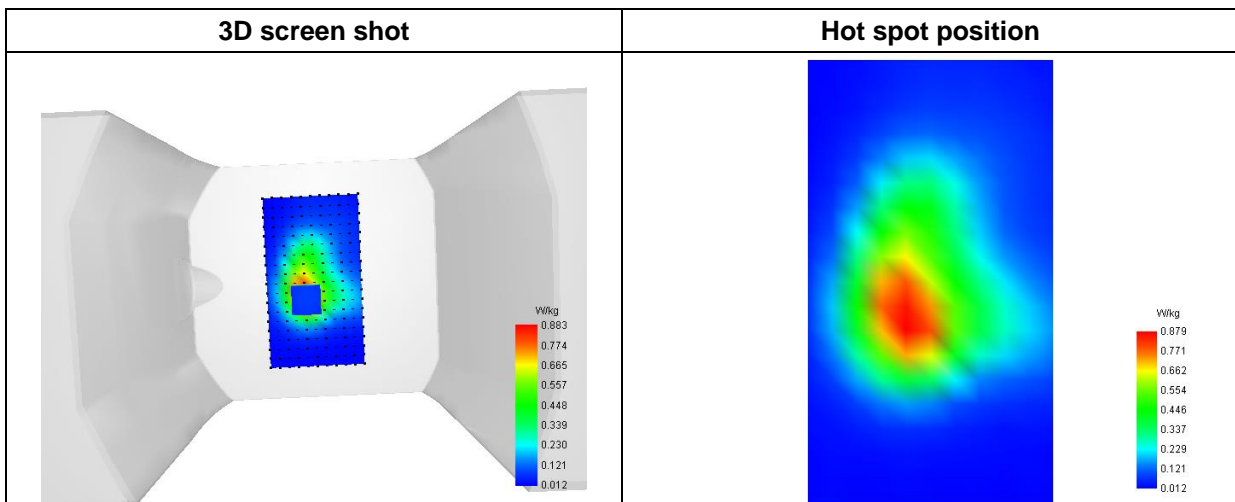
SAR 10g (W/Kg)	0.423177
SAR 1g (W/Kg)	0.845469

E. Z Axis Scan

Z (mm)	0.00	4.00	6.00	8.00	10.00	12.00	14.00	16.00	18.00
SAR (W/Kg)	1.8123	0.8831	0.6023	0.4574	0.3201	0.2469	0.1803	0.1420	0.1087



F. 3D Image



MEASUREMENT 5

Type: Phone measurement (Complete)
 Date of measurement: 2023-01-10
 Measurement duration: 12 minutes 3 seconds

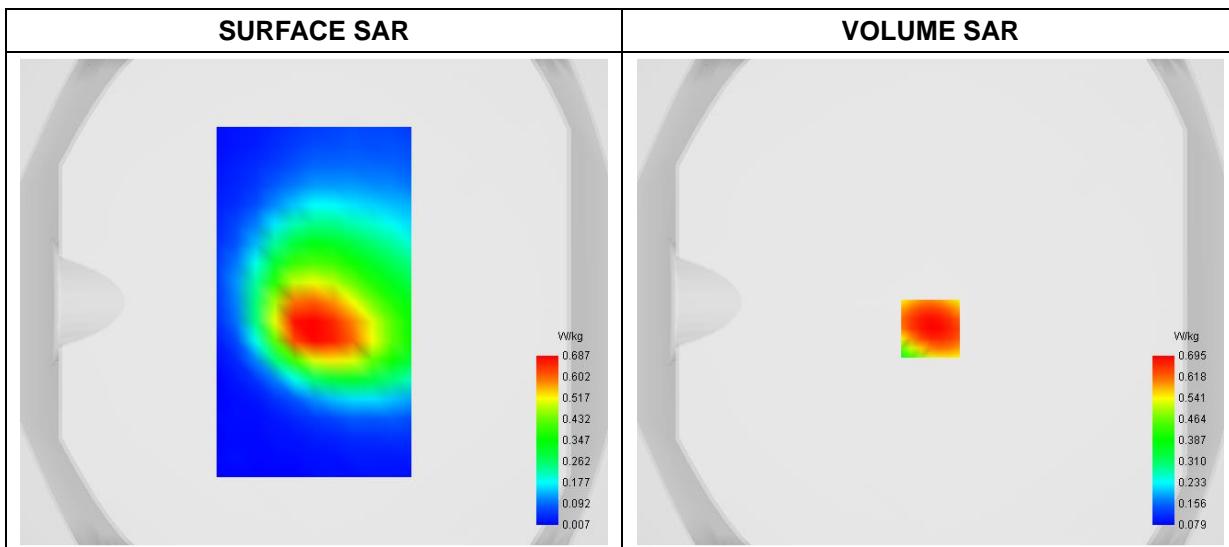
A. Experimental conditions

Area Scan	dx=8mm dy=8mm
Zoom Scan	dx=4mm dy=4mm dz=2mm
Phantom	Flat Plane
Device Position	Back
Band	WCDMA850_RMC
Channels	High
Signal	Duty Cycle 1:1

B. SAR Measurement Results

Frequency (MHz)	846.600000
Relative Permittivity (real part)	56.342759
Conductivity (S/m)	0.964036
Power Variation (%)	-1.020000
Ambient Temperature	22.5
Liquid Temperature	22.5

C. SAR Surface and Volume



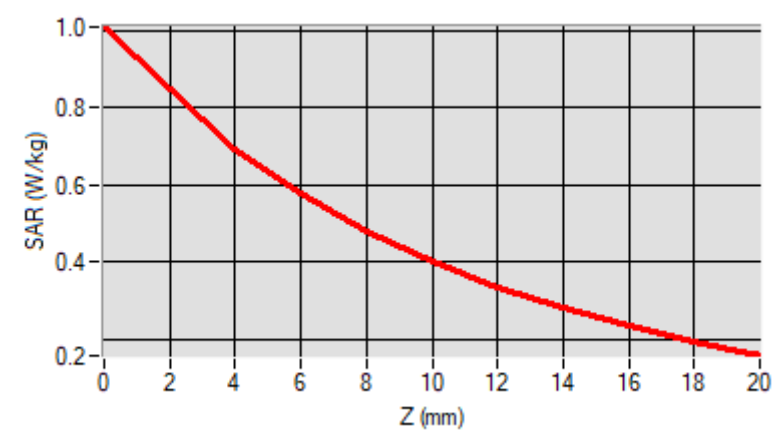
Maximum location: X=0.00, Y=-11.00

D. SAR 1g & 10g

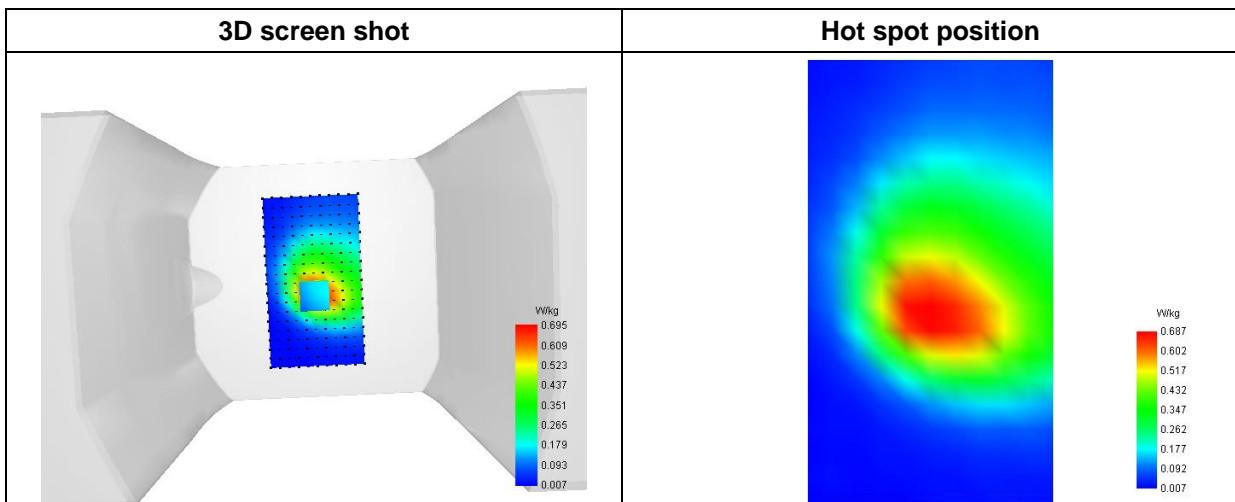
SAR 10g (W/Kg)	0.414953
SAR 1g (W/Kg)	0.676491

E. Z Axis Scan

Z (mm)	0.00	4.00	6.00	8.00	10.00	12.00	14.00	16.00	18.00
SAR (W/Kg)	1.0101	0.6951	0.5777	0.4803	0.4007	0.3350	0.2802	0.2336	0.1933



F. 3D Image



MEASUREMENT 6

Type: Phone measurement (Complete)
 Date of measurement: 2023-01-11
 Measurement duration: 12 minutes 3 seconds

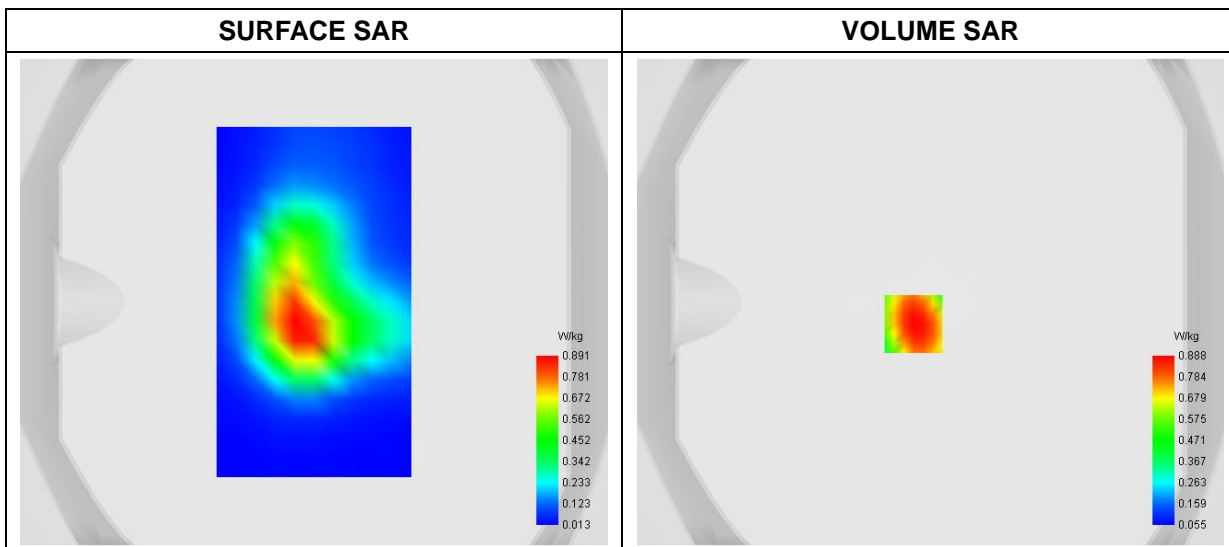
A. Experimental conditions

Area Scan	dx=8mm dy=8mm
Zoom Scan	dx=4mm dy=4mm dz=2mm
Phantom	Flat Plane
Device Position	Back
Band	LTE Band 2
Channels	QPSK, 20MHz, 1RB, Middle
Signal	Duty Cycle 1:1

B. SAR Measurement Results

Frequency (MHz)	1880.000000
Relative Permittivity (real part)	54.782468
Conductivity (S/m)	1.513697
Power Variation (%)	1.390000
Ambient Temperature	22.3
Liquid Temperature	22.3

C. SAR Surface and Volume



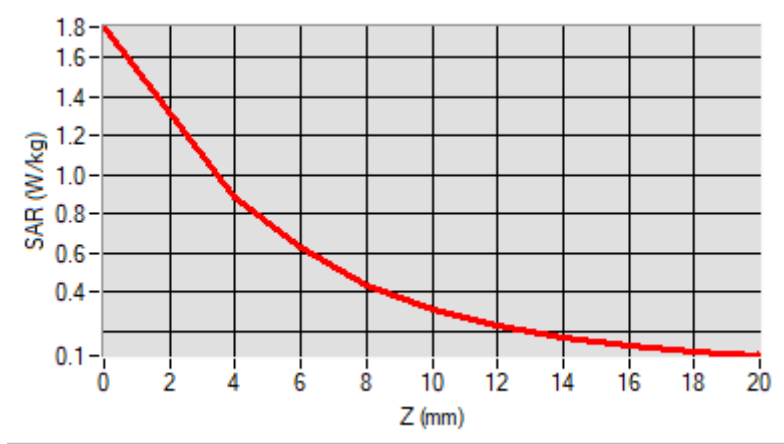
Maximum location: X=-7.00, Y=-9.00

D. SAR 1g & 10g

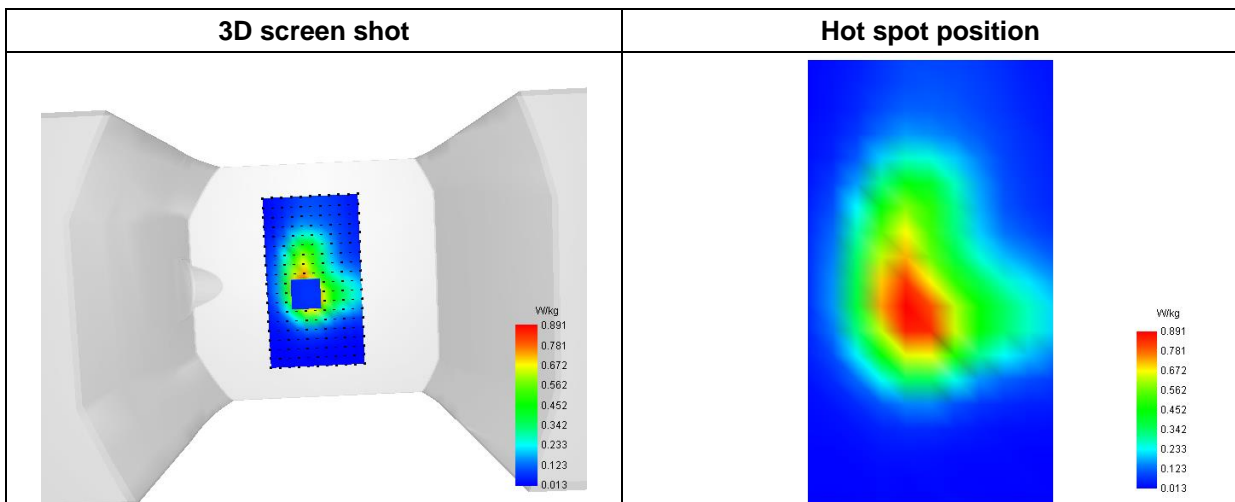
SAR 10g (W/Kg)	0.424914
SAR 1g (W/Kg)	0.854150

E. Z Axis Scan

Z (mm)	0.00	4.00	6.00	8.00	10.00	12.00	14.00	16.00	18.00
SAR (W/Kg)	1.7561	0.8877	0.6231	0.4360	0.3097	0.2243	0.1661	0.1253	0.0954



F. 3D Image



MEASUREMENT 7

Type: Phone measurement (Complete)
 Date of measurement: 2023-01-11
 Measurement duration: 12 minutes 3 seconds

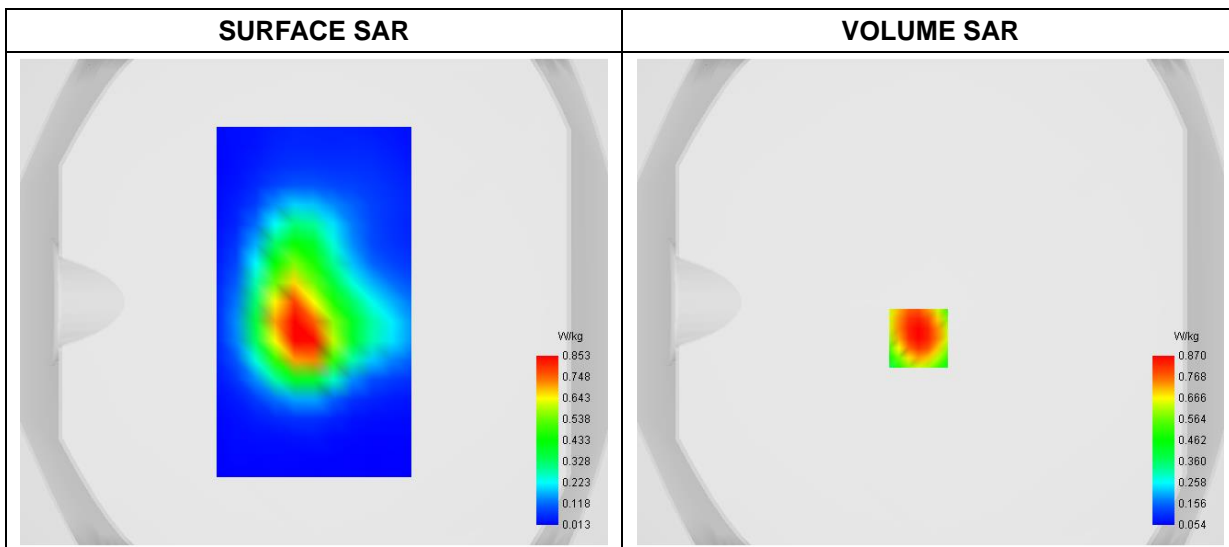
A. Experimental conditions

Area Scan	dx=8mm dy=8mm
Zoom Scan	dx=4mm dy=4mm dz=2mm
Phantom	Flat Plane
Device Position	Back
Band	LTE Band 4
Channels	QPSK 20MHz 1RB, High
Signal	Duty Cycle 1:1

B. SAR Measurement Results

Frequency (MHz)	1745.000000
Relative Permittivity (real part)	54.752556
Conductivity (S/m)	1.511875
Power Variation (%)	2.080000
Ambient Temperature	22.3
Liquid Temperature	22.3

C. SAR Surface and Volume



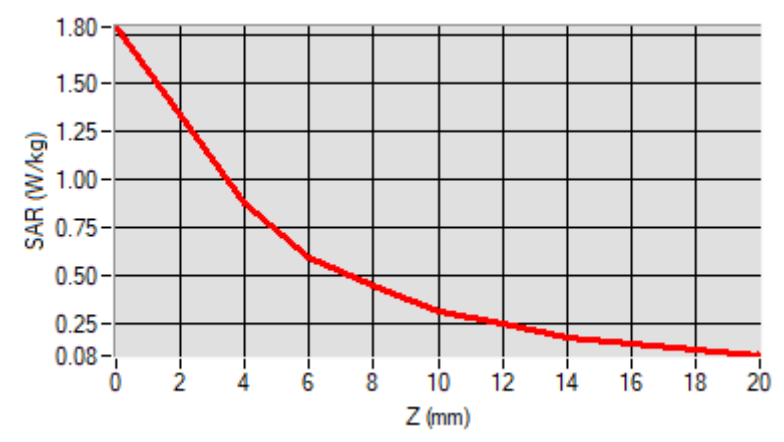
Maximum location: X=-5.00, Y=-15.00

D. SAR 1g & 10g

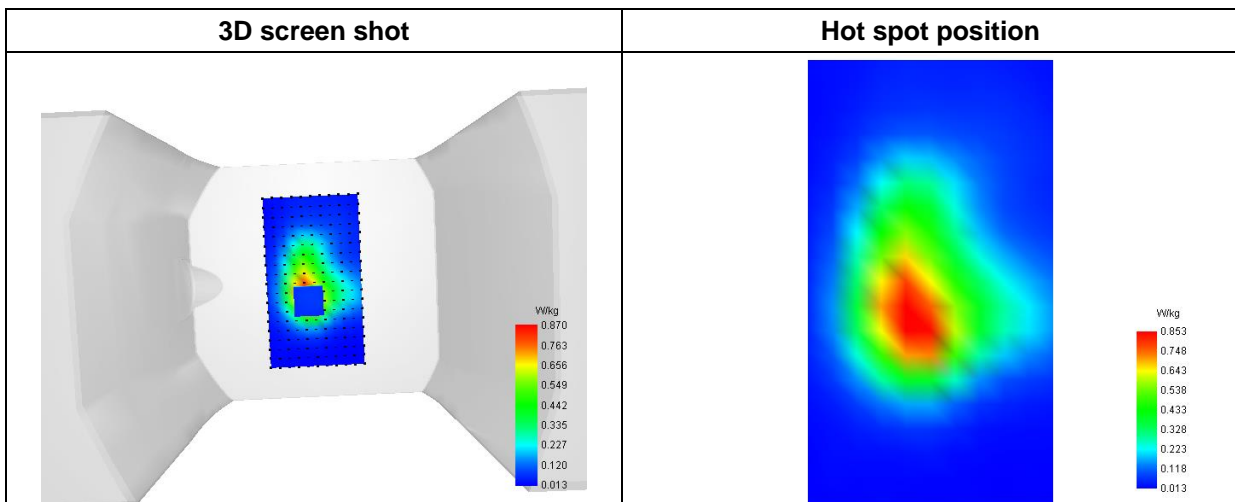
SAR 10g (W/Kg)	0.417012
SAR 1g (W/Kg)	0.834375

E. Z Axis Scan

Z (mm)	0.00	4.00	6.00	8.00	10.00	12.00	14.00	16.00	18.00
SAR (W/Kg)	1.7956	0.8703	0.5899	0.4494	0.3111	0.2413	0.1733	0.1376	0.1048



F. 3D Image



MEASUREMENT 8

Type: Phone measurement (Complete)
 Date of measurement: 2023-01-10
 Measurement duration: 12 minutes 3 seconds

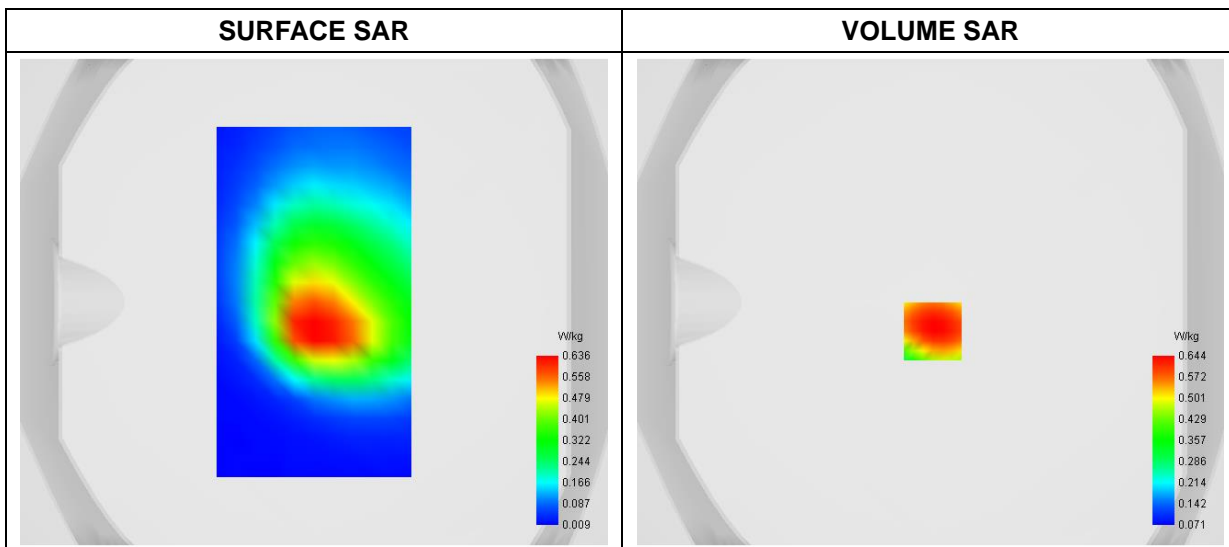
A. Experimental conditions

Area Scan	dx=8mm dy=8mm
Zoom Scan	dx=4mm dy=4mm dz=2mm
Phantom	Flat Plane
Device Position	Back
Band	LTE Band 5
Channels	QPSK, 10MHz, 1RB, Middle
Signal	Duty Cycle 1:1

B. SAR Measurement Results

Frequency (MHz)	836.500000
Relative Permittivity (real part)	56.334456
Conductivity (S/m)	0.960456
Power Variation (%)	-1.870000
Ambient Temperature	22.5
Liquid Temperature	22.5

C. SAR Surface and Volume



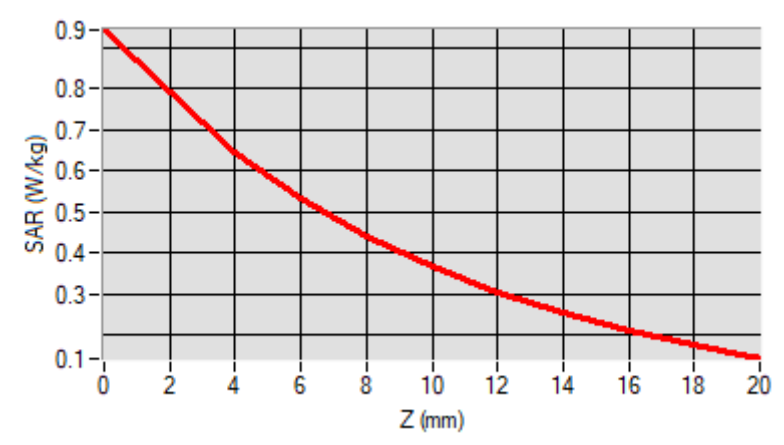
Maximum location: X=1.00, Y=-12.00

D. SAR 1g & 10g

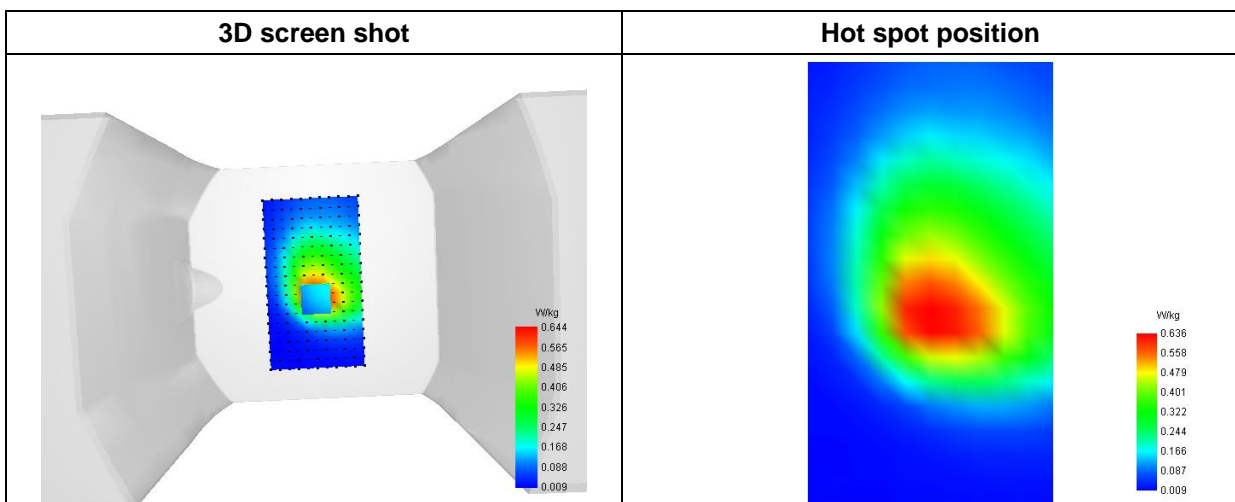
SAR 10g (W/Kg)	0.382943
SAR 1g (W/Kg)	0.634261

E. Z Axis Scan

Z (mm)	0.00	4.00	6.00	8.00	10.00	12.00	14.00	16.00	18.00
SAR (W/Kg)	0.9438	0.6439	0.5329	0.4412	0.3668	0.3057	0.2550	0.2121	0.1752



F. 3D Image



MEASUREMENT 9

Type: Phone measurement (Complete)
 Date of measurement: 2023-01-12
 Measurement duration: 12 minutes 3 seconds

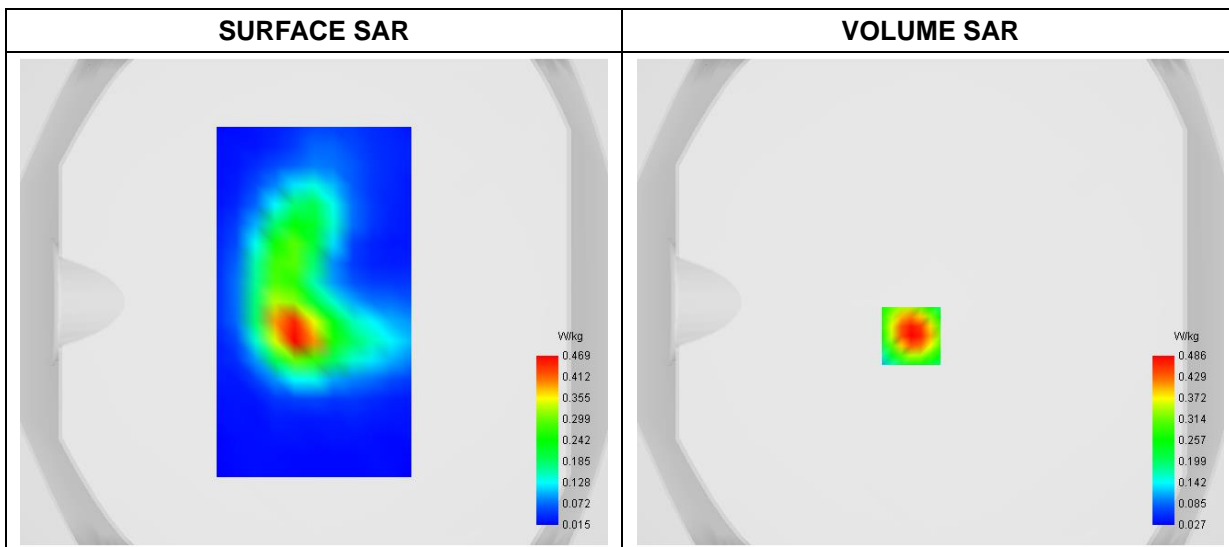
A. Experimental conditions

Area Scan	dx=8mm dy=8mm
Zoom Scan	dx=4mm dy=4mm dz=2mm
Phantom	Flat Plane
Device Position	Back
Band	LTE Band 7
Channels	QPSK, 20MHz, 1RB, Low
Signal	Duty Cycle 1:1

B. SAR Measurement Results

Frequency (MHz)	2510.000000
Relative Permittivity (real part)	53.253668
Conductivity (S/m)	2.092263
Power Variation (%)	1.710000
Ambient Temperature	22.6
Liquid Temperature	22.6

C. SAR Surface and Volume



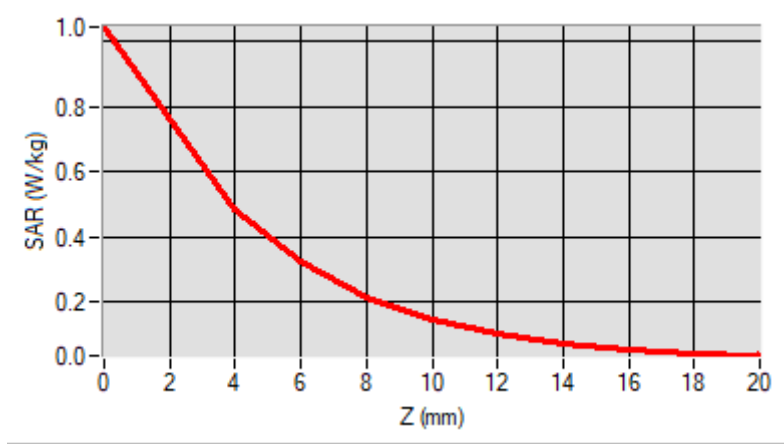
Maximum location: X=-8.00, Y=-14.00

D. SAR 1g & 10g

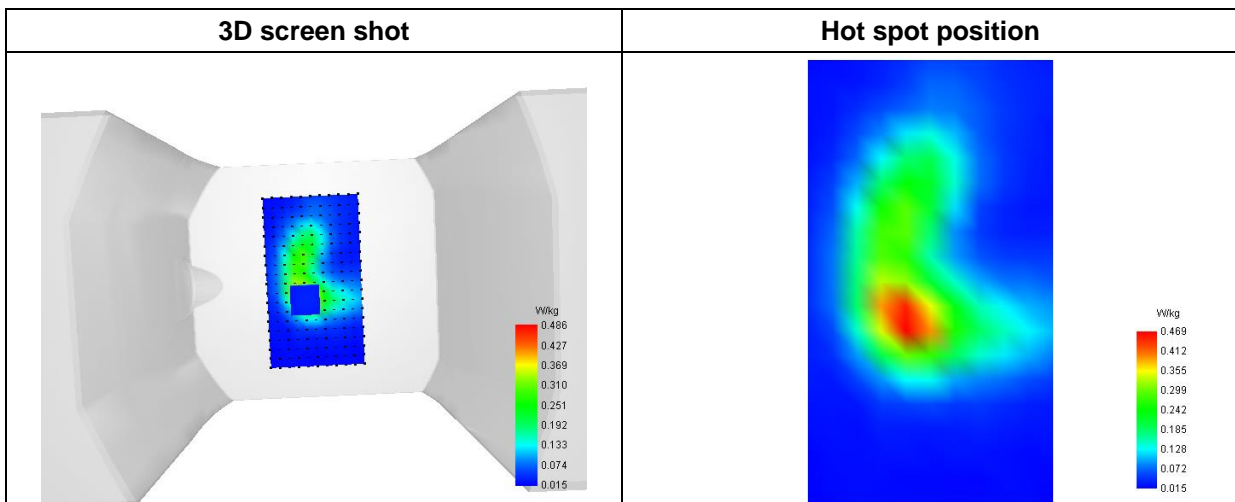
SAR 10g (W/Kg)	0.203213
SAR 1g (W/Kg)	0.460829

E. Z Axis Scan

Z (mm)	0.00	4.00	6.00	8.00	10.00	12.00	14.00	16.00	18.00
SAR (W/Kg)	1.0438	0.4864	0.3250	0.2163	0.1472	0.1036	0.0762	0.0585	0.0464



F. 3D Image



MEASUREMENT 10

Type: Phone measurement (Complete)
 Date of measurement: 2023-01-10
 Measurement duration: 12 minutes 3 seconds

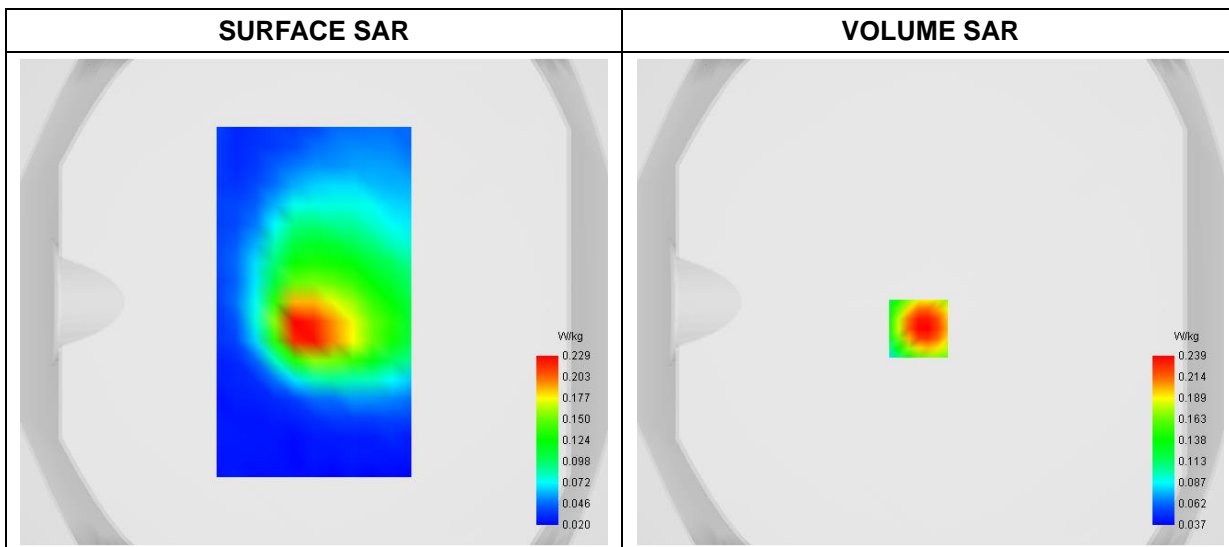
A. Experimental conditions

Area Scan	dx=8mm dy=8mm
Zoom Scan	dx=4mm dy=4mm dz=2mm
Phantom	Flat Plane
Device Position	Back
Band	LTE Band 12
Channels	QPSK, 10MHz, 1RB, Low
Signal	Duty Cycle 1:1

B. SAR Measurement Results

Frequency (MHz)	704.000000
Relative Permittivity (real part)	54.734087
Conductivity (S/m)	0.953437
Power Variation (%)	3.050000
Ambient Temperature	22.5
Liquid Temperature	22.5

C. SAR Surface and Volume



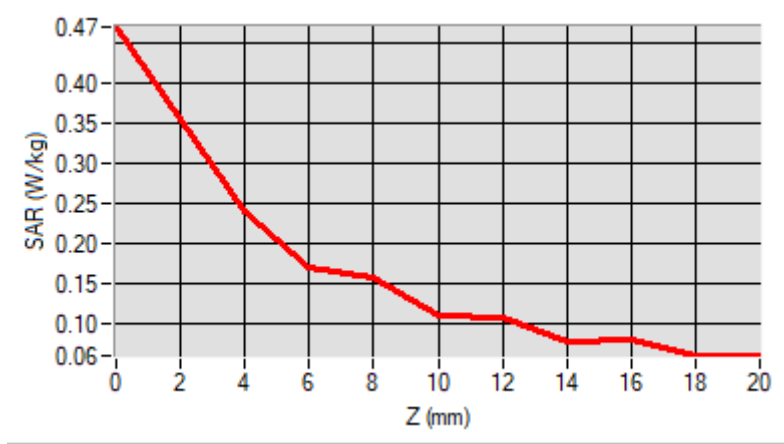
Maximum location: X=-5.00, Y=-11.00

D. SAR 1g & 10g

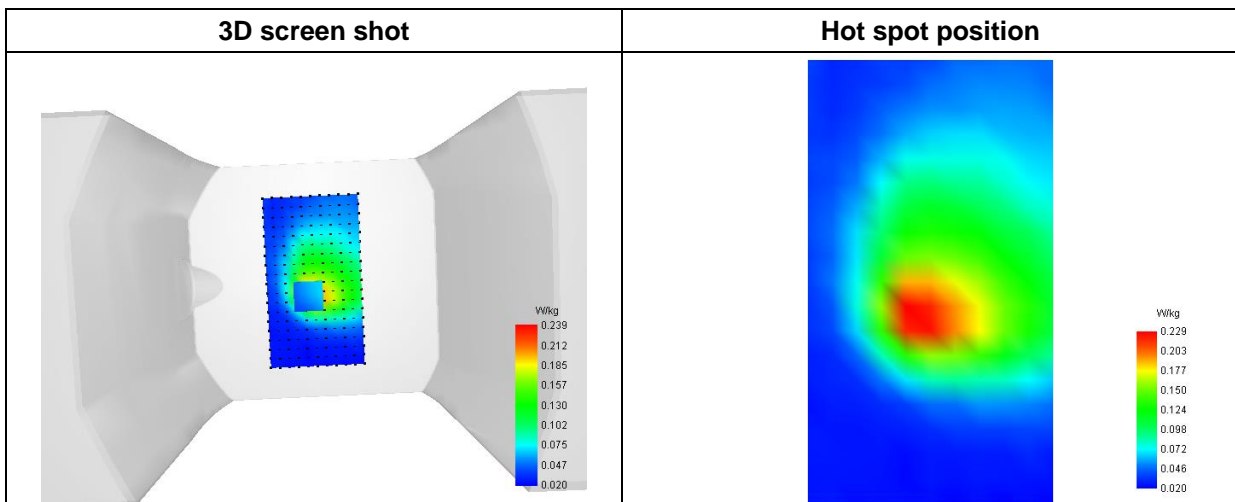
SAR 10g (W/Kg)	0.136944
SAR 1g (W/Kg)	0.234601

E. Z Axis Scan

Z (mm)	0.00	4.00	6.00	8.00	10.00	12.00	14.00	16.00	18.00
SAR (W/Kg)	0.4691	0.2394	0.1712	0.1572	0.1118	0.1095	0.0799	0.0810	0.0613



F. 3D Image



MEASUREMENT 11

Type: Phone measurement (Complete)
 Date of measurement: 2023-01-10
 Measurement duration: 12 minutes 3 seconds

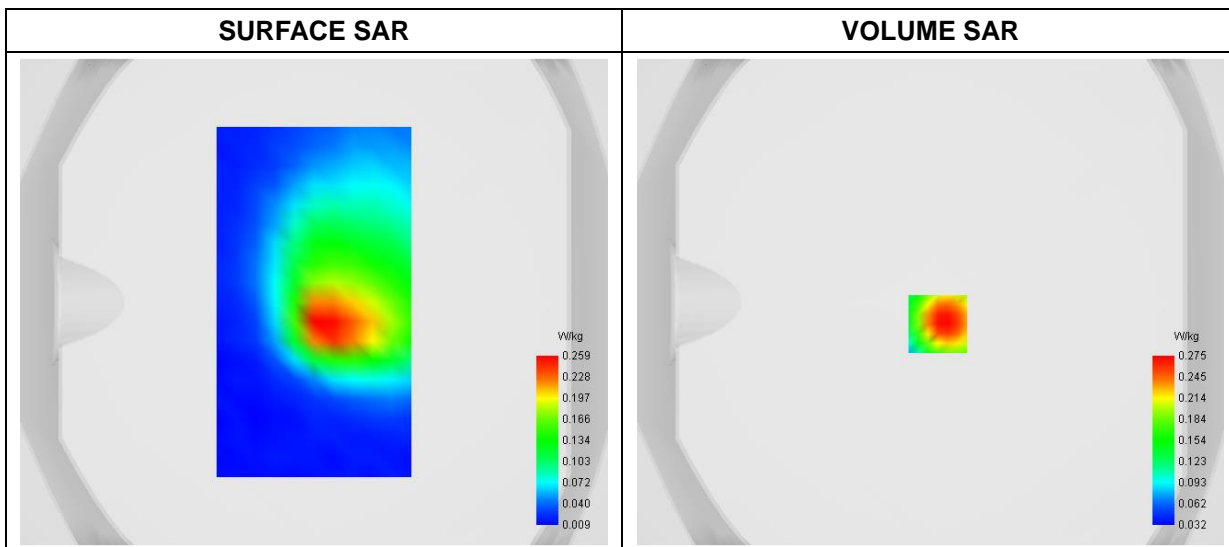
A. Experimental conditions

Area Scan	dx=8mm dy=8mm
Zoom Scan	dx=4mm dy=4mm dz=2mm
Phantom	Flat Plane
Device Position	Back
Band	LTE Band 17
Channels	QPSK, 10MHz, 1RB, High
Signal	Duty Cycle 1:1

B. SAR Measurement Results

Frequency (MHz)	711.000000
Relative Permittivity (real part)	54.742074
Conductivity (S/m)	0.953175
Power Variation (%)	1.350000
Ambient Temperature	22.5
Liquid Temperature	22.5

C. SAR Surface and Volume



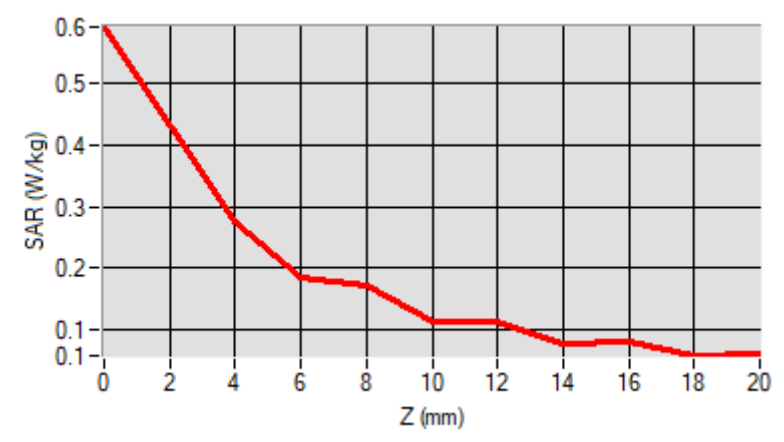
Maximum location: X=3.00, Y=-9.00

D. SAR 1g & 10g

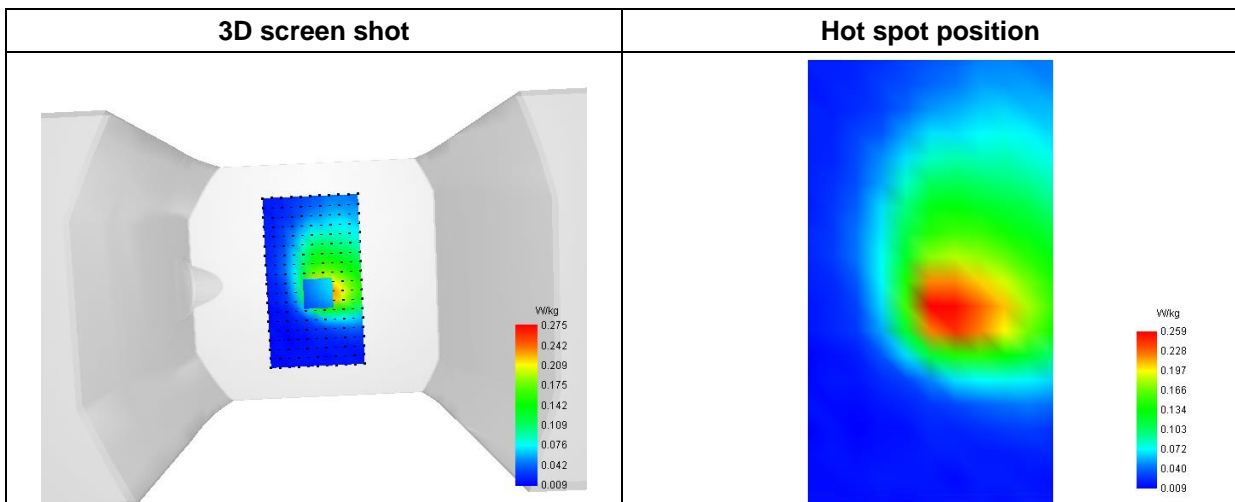
SAR 10g (W/Kg)	0.149340
SAR 1g (W/Kg)	0.268778

E. Z Axis Scan

Z (mm)	0.00	4.00	6.00	8.00	10.00	12.00	14.00	16.00	18.00
SAR (W/Kg)	0.5918	0.2752	0.1838	0.1719	0.1140	0.1144	0.0779	0.0814	0.0577



F. 3D Image



MEASUREMENT 12

Type: Phone measurement (Complete)
 Date of measurement: 2023-01-12
 Measurement duration: 12 minutes 3 seconds

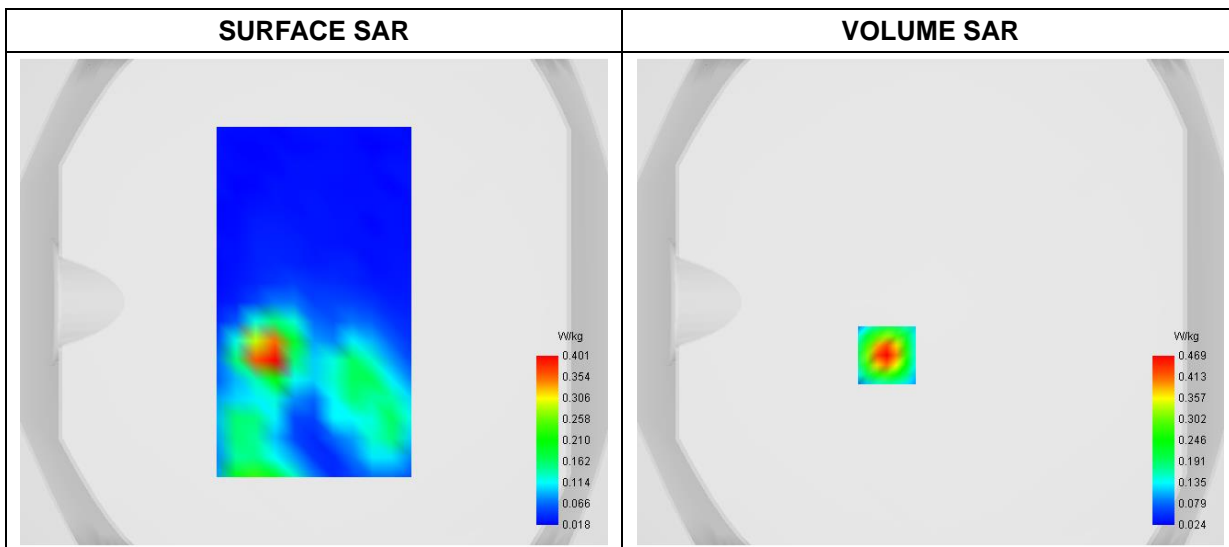
A. Experimental conditions

Area Scan	dx=8mm dy=8mm
Zoom Scan	dx=4mm dy=4mm dz=2mm
Phantom	Flat Plane
Device Position	Back
Band	LTE Band 38
Channels	QPSK, 20MHz, 1RB, High
Signal	Duty Cycle 1:1

B. SAR Measurement Results

Frequency (MHz)	2610.000000
Relative Permittivity (real part)	52.273175
Conductivity (S/m)	0.923745
Power Variation (%)	-1.650000
Ambient Temperature	22.6
Liquid Temperature	22.6

C. SAR Surface and Volume



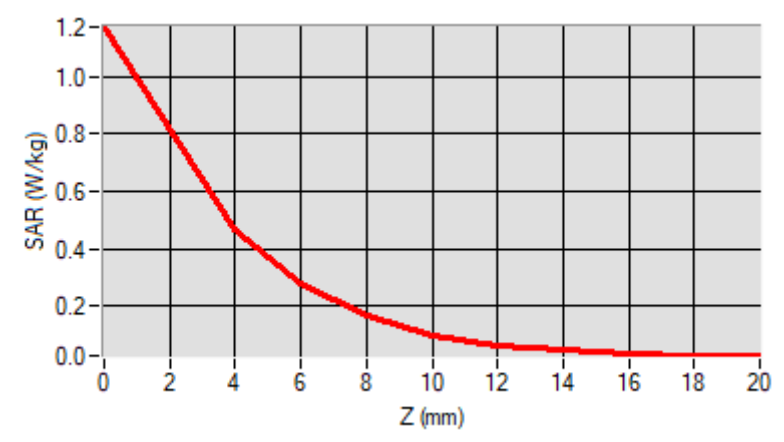
Maximum location: X=-18.00, Y=-22.00

D. SAR 1g & 10g

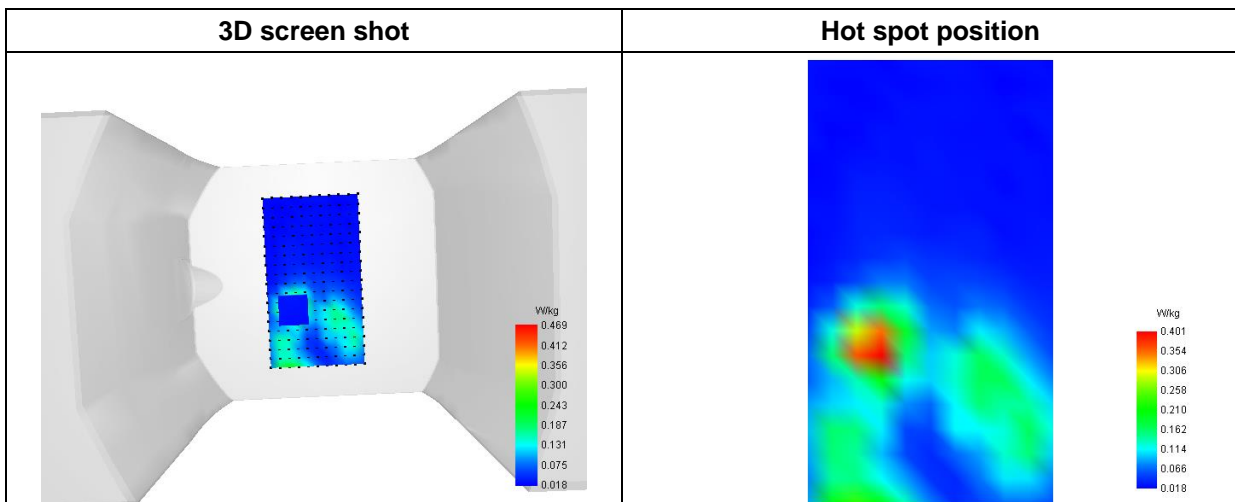
SAR 10g (W/Kg)	0.159264
SAR 1g (W/Kg)	0.428452

E. Z Axis Scan

Z (mm)	0.00	4.00	6.00	8.00	10.00	12.00	14.00	16.00	18.00
SAR (W/Kg)	1.1710	0.4686	0.2815	0.1661	0.1008	0.0648	0.0457	0.0358	0.0309



F. 3D Image



MEASUREMENT 13

Type: Phone measurement (Complete)
 Date of measurement: 2023-01-12
 Measurement duration: 12 minutes 3 seconds

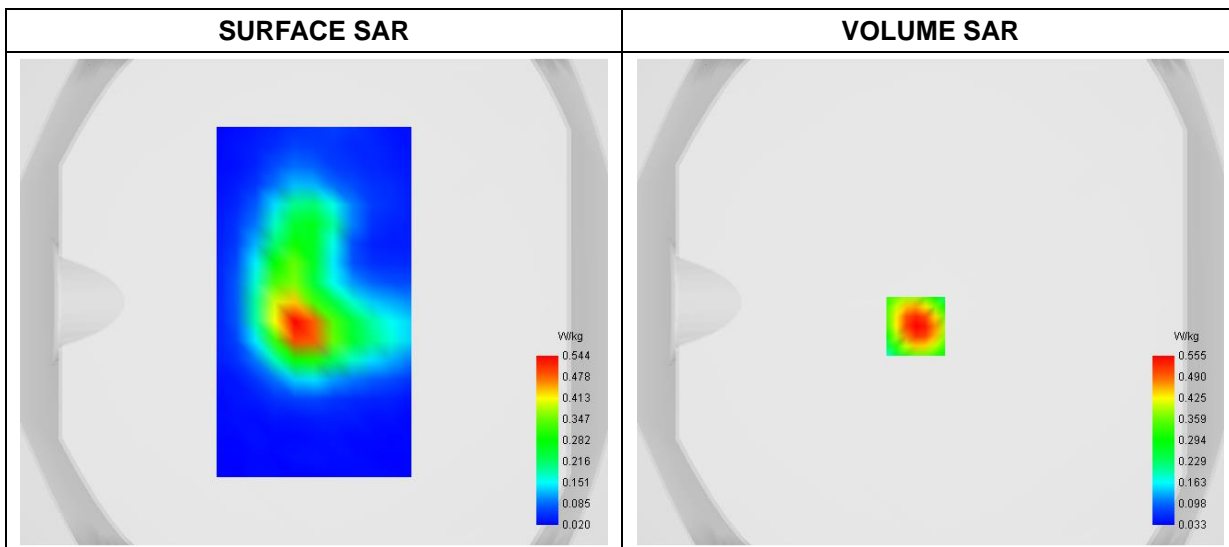
A. Experimental conditions

Area Scan	dx=8mm dy=8mm
Zoom Scan	dx=4mm dy=4mm dz=2mm
Phantom	Flat Plane
Device Position	Back
Band	LTE Band 40(2305-2315MHz)
Channels	QPSK, 10MHz, 1RB, Middle
Signal	Duty Cycle 1:1

B. SAR Measurement Results

Frequency (MHz)	2310.000000
Relative Permittivity (real part)	54.772614
Conductivity (S/m)	1.820378
Power Variation (%)	1.580000
Ambient Temperature	22.3
Liquid Temperature	22.3

C. SAR Surface and Volume



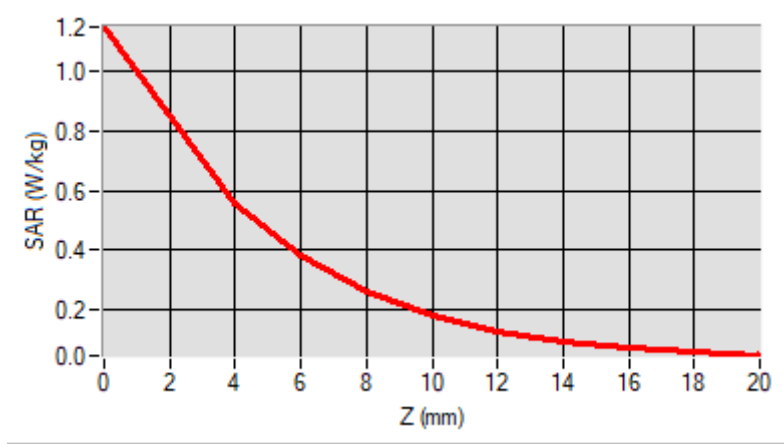
Maximum location: X=-6.00, Y=-10.00

D. SAR 1g & 10g

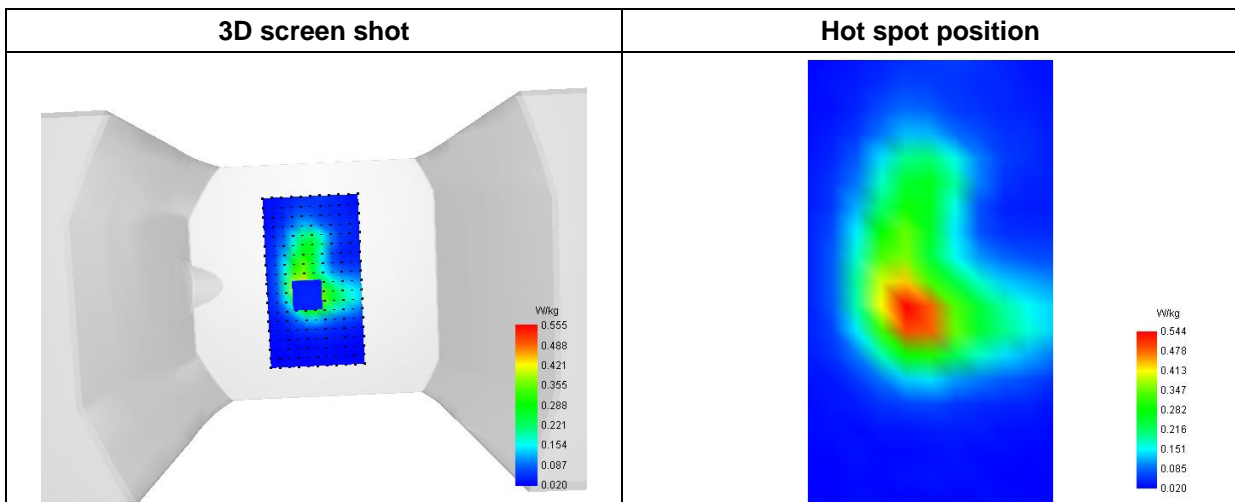
SAR 10g (W/Kg)	0.242479
SAR 1g (W/Kg)	0.524753

E. Z Axis Scan

Z (mm)	0.00	4.00	6.00	8.00	10.00	12.00	14.00	16.00	18.00
SAR (W/Kg)	1.1500	0.5554	0.3798	0.2591	0.1806	0.1297	0.0965	0.0743	0.0588



F. 3D Image



MEASUREMENT 14

Type: Phone measurement (Complete)
 Date of measurement: 2023-01-12
 Measurement duration: 12 minutes 3 seconds

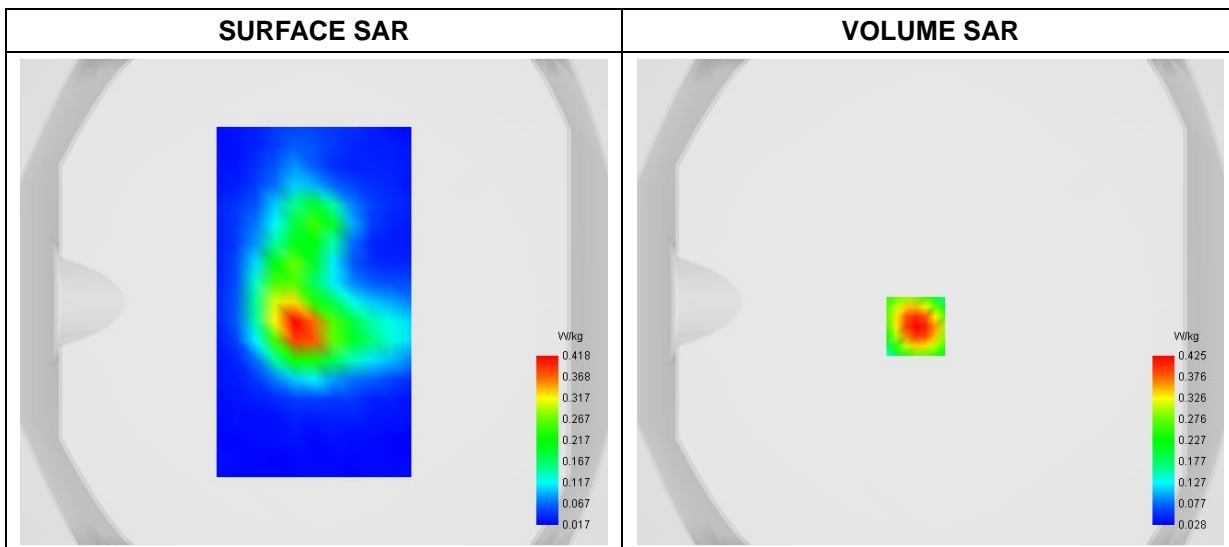
A. Experimental conditions

Area Scan	dx=8mm dy=8mm
Zoom Scan	dx=4mm dy=4mm dz=2mm
Phantom	Flat Plane
Device Position	Back
Band	LTE Band 40(2350-2360MHz)
Channels	QPSK, 10MHz, 1RB, Middle
Signal	Duty Cycle 1:1

B. SAR Measurement Results

Frequency (MHz)	2355.000000
Relative Permittivity (real part)	54.781736
Conductivity (S/m)	1.820651
Power Variation (%)	2.660000
Ambient Temperature	22.3
Liquid Temperature	22.3

C. SAR Surface and Volume



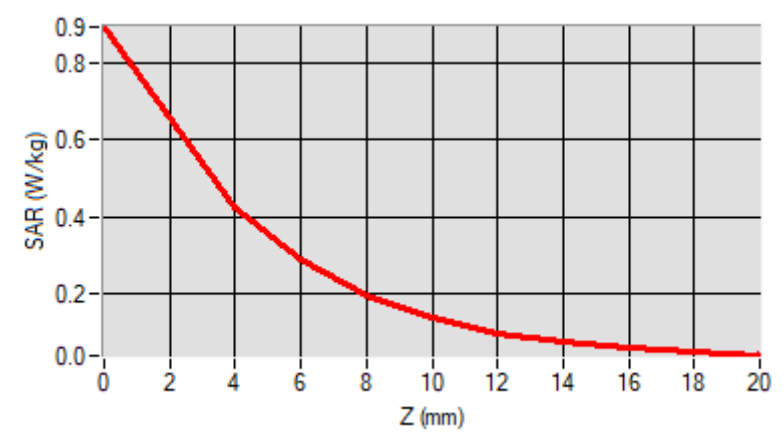
Maximum location: X=-6.00, Y=-10.00

D. SAR 1g & 10g

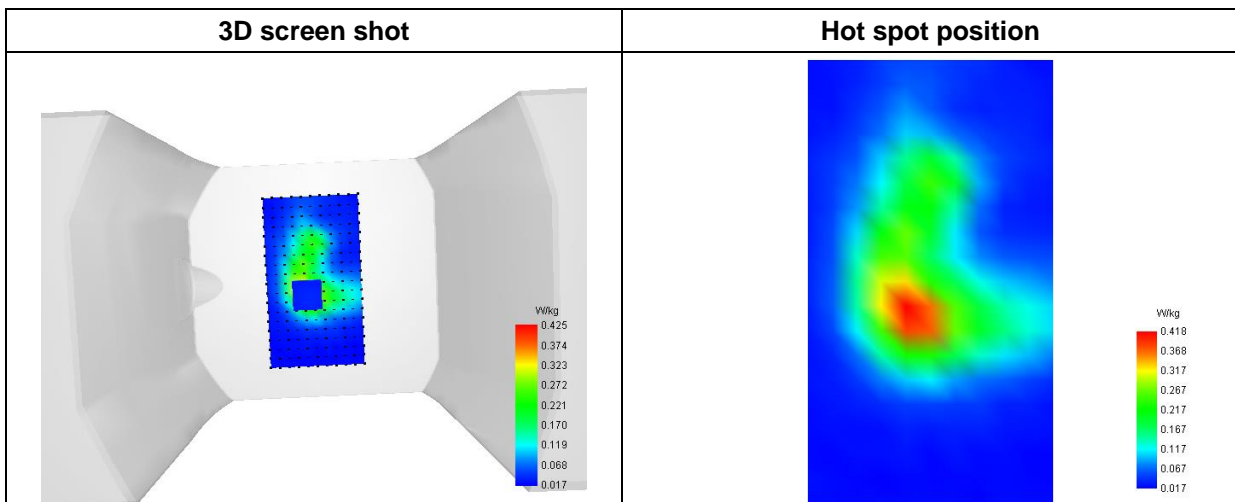
SAR 10g (W/Kg)	0.185123
SAR 1g (W/Kg)	0.401731

E. Z Axis Scan

Z (mm)	0.00	4.00	6.00	8.00	10.00	12.00	14.00	16.00	18.00
SAR (W/Kg)	0.8950	0.4254	0.2883	0.1951	0.1353	0.0971	0.0727	0.0569	0.0459



F. 3D Image



MEASUREMENT 15

Type: Phone measurement (Complete)
 Date of measurement: 2023-01-11
 Measurement duration: 12 minutes 3 seconds

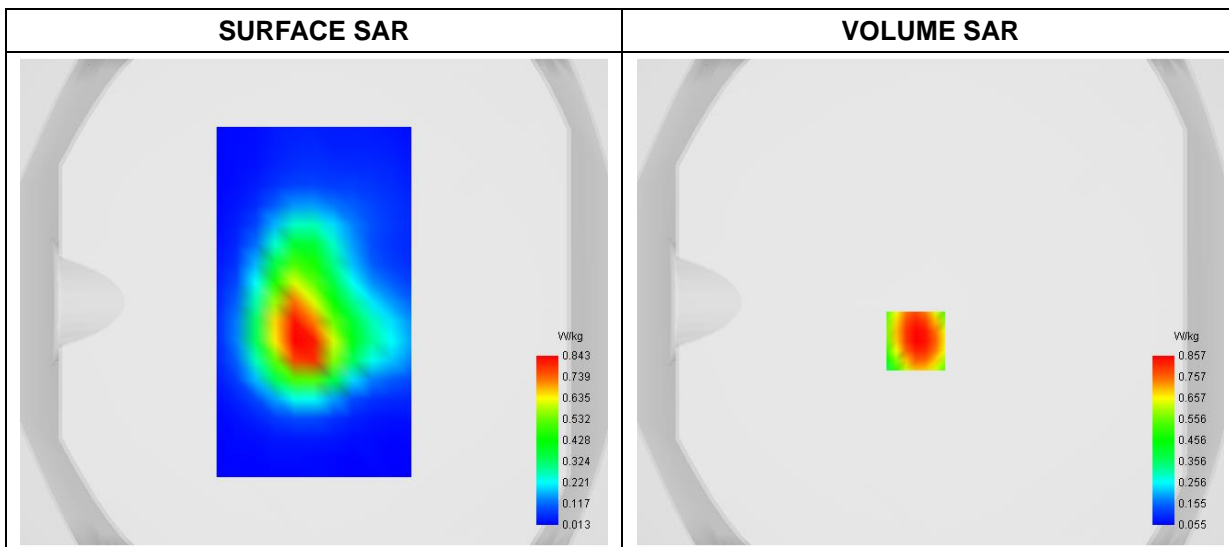
A. Experimental conditions

Area Scan	dx=8mm dy=8mm
Zoom Scan	dx=4mm dy=4mm dz=2mm
Phantom	Flat Plane
Device Position	Back
Band	LTE Band 66
Channels	QPSK, 20MHz, 1RB, High
Signal	Duty Cycle 1:1

B. SAR Measurement Results

Frequency (MHz)	1770.000000
Relative Permittivity (real part)	54.752575
Conductivity (S/m)	1.517954
Power Variation (%)	3.050000
Ambient Temperature	22.3
Liquid Temperature	22.3

C. SAR Surface and Volume



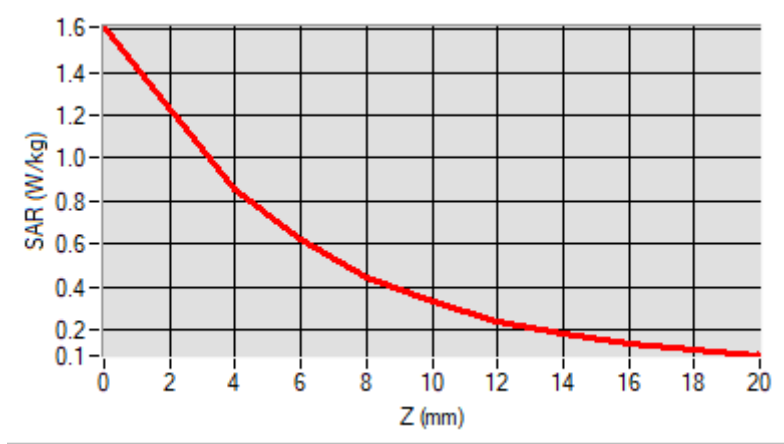
Maximum location: X=-6.00, Y=-16.00

D. SAR 1g & 10g

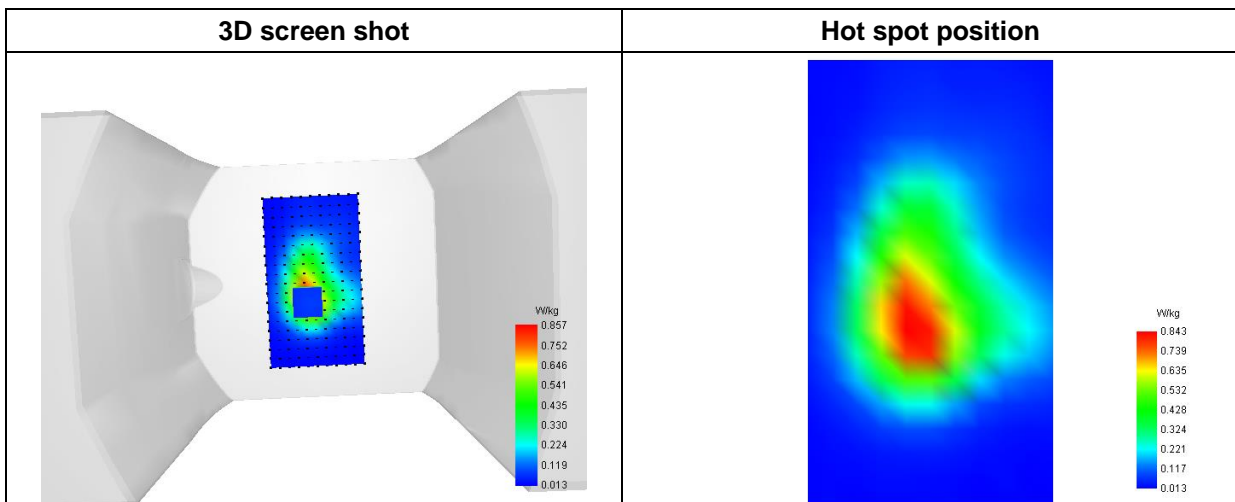
SAR 10g (W/Kg)	0.414376
SAR 1g (W/Kg)	0.821208

E. Z Axis Scan

Z (mm)	0.00	4.00	6.00	8.00	10.00	12.00	14.00	16.00	18.00
SAR (W/Kg)	1.6123	0.8570	0.6196	0.4470	0.3264	0.2418	0.1818	0.1381	0.1049



F. 3D Image



MEASUREMENT 16

Type: Phone measurement (Complete)
 Date of measurement: 2023-01-13
 Measurement duration: 12 minutes 3 seconds

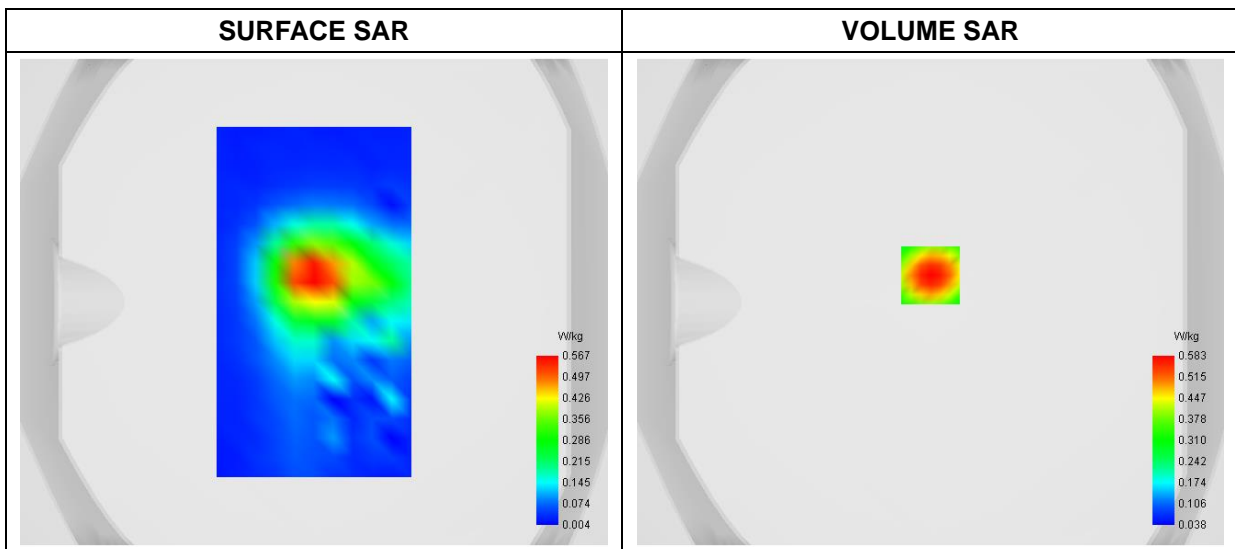
A. Experimental conditions

Area Scan	dx=8mm dy=8mm
Zoom Scan	dx=4mm dy=4mm dz=2mm
Phantom	Flat Plane
Device Position	Back
Band	WiFi_802.11b
Channels	Low
Signal	Duty Cycle 1:1

B. SAR Measurement Results

Frequency (MHz)	2412.000000
Relative Permittivity (real part)	53.561158
Conductivity (S/m)	1.931286
Power Variation (%)	1.480000
Ambient Temperature	22.6
Liquid Temperature	22.6

C. SAR Surface and Volume



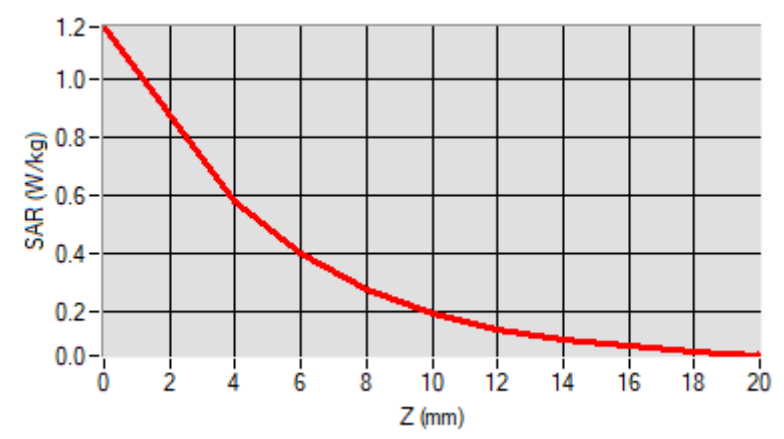
Maximum location: X=0.00, Y=11.00

D. SAR 1g & 10g

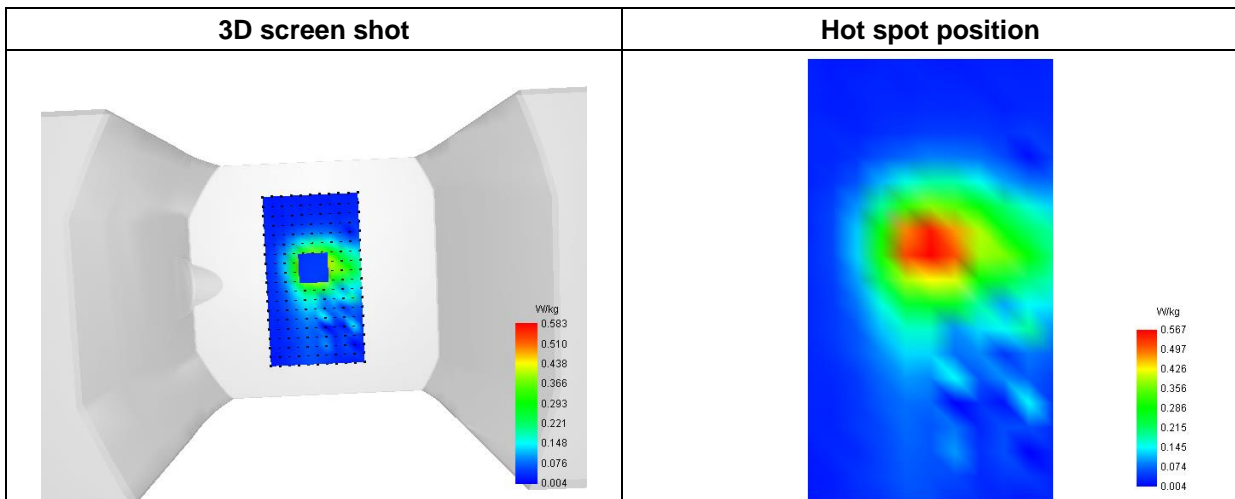
SAR 10g (W/Kg)	0.265209
SAR 1g (W/Kg)	0.453699

E. Z Axis Scan

Z (mm)	0.00	4.00	6.00	8.00	10.00	12.00	14.00	16.00	18.00
SAR (W/Kg)	1.1701	0.5728	0.4039	0.2593	0.1768	0.1322	0.1059	0.0811	0.0533



F. 3D Image



MEASUREMENT 17

Type: Phone measurement (Complete)
 Date of measurement: 2023-01-13
 Measurement duration: 12 minutes 3 seconds

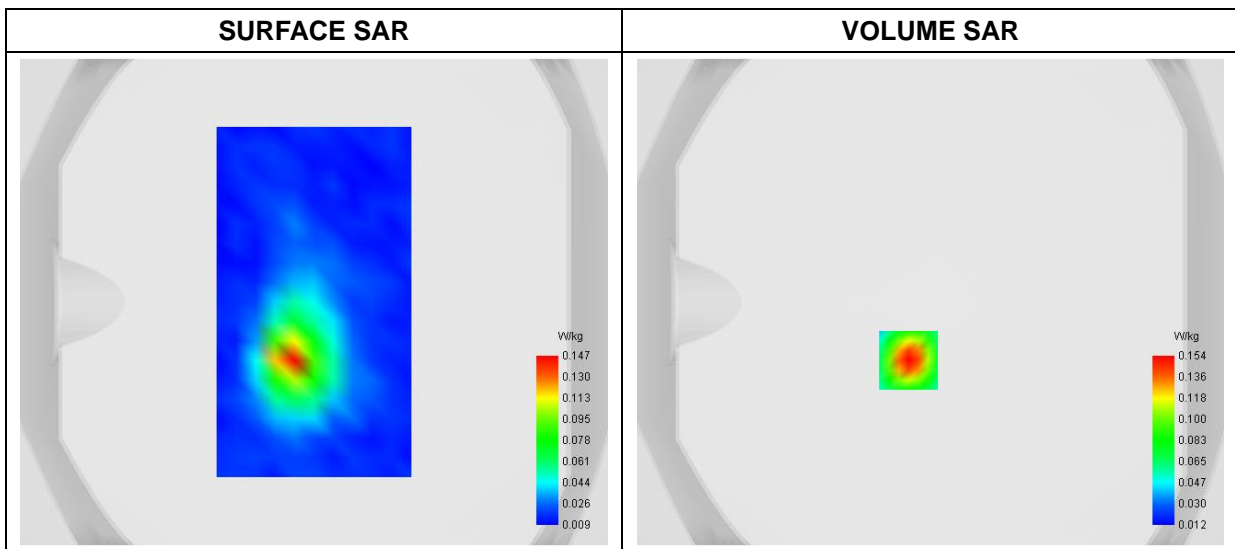
A. Experimental conditions

Area Scan	dx=8mm dy=8mm
Zoom Scan	dx=4mm dy=4mm dz=2mm
Phantom	Flat Plane
Device Position	Back
Band	Bluetooth
Channels	Low
Signal	Duty Cycle 1:1

B. SAR Measurement Results

Frequency (MHz)	2402.000000
Relative Permittivity (real part)	53.554152
Conductivity (S/m)	1.931261
Power Variation (%)	0.130000
Ambient Temperature	22.6
Liquid Temperature	22.6

C. SAR Surface and Volume



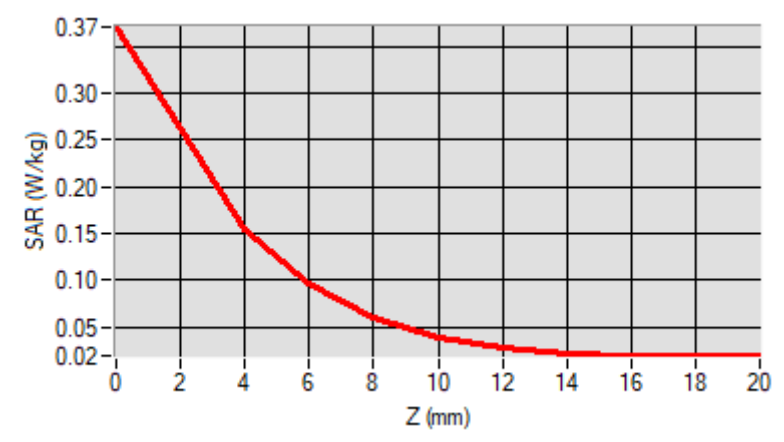
Maximum location: X=-9.00, Y=-24.00

D. SAR 1g & 10g

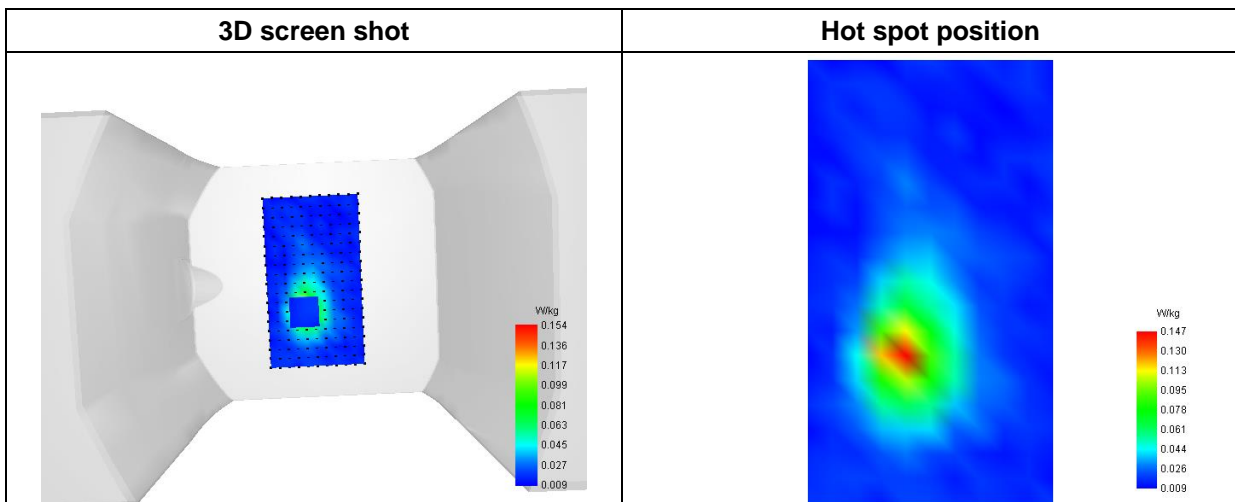
SAR 10g (W/Kg)	0.062348
SAR 1g (W/Kg)	0.144847

E. Z Axis Scan

Z (mm)	0.00	4.00	6.00	8.00	10.00	12.00	14.00	16.00	18.00
SAR (W/Kg)	0.3713	0.1536	0.0953	0.0592	0.0387	0.0276	0.0220	0.0195	0.0189



F. 3D Image



Annex C. EUT Photos

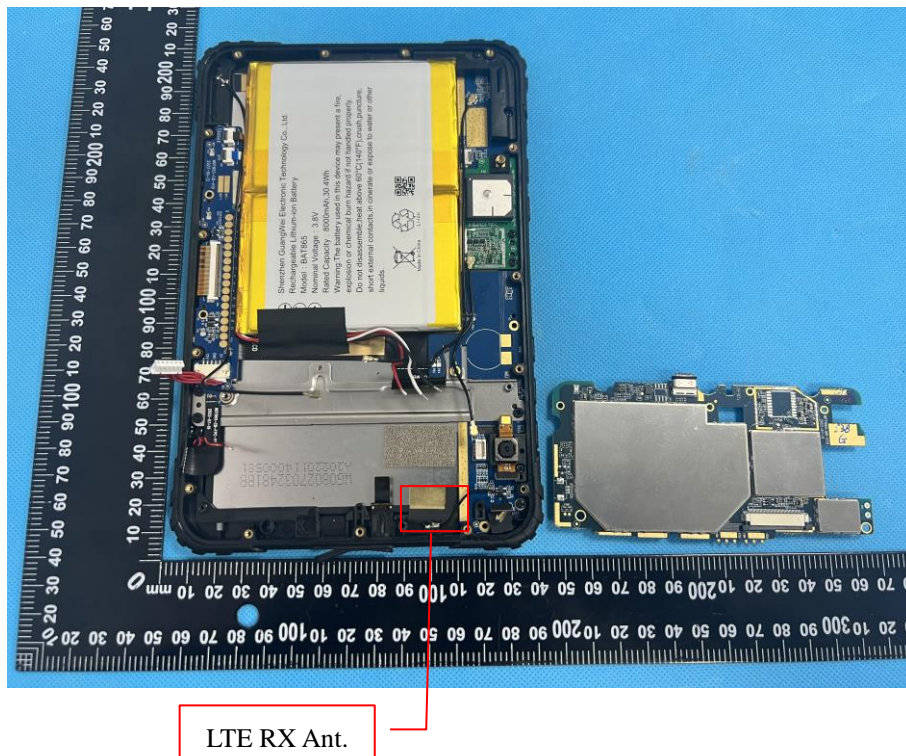
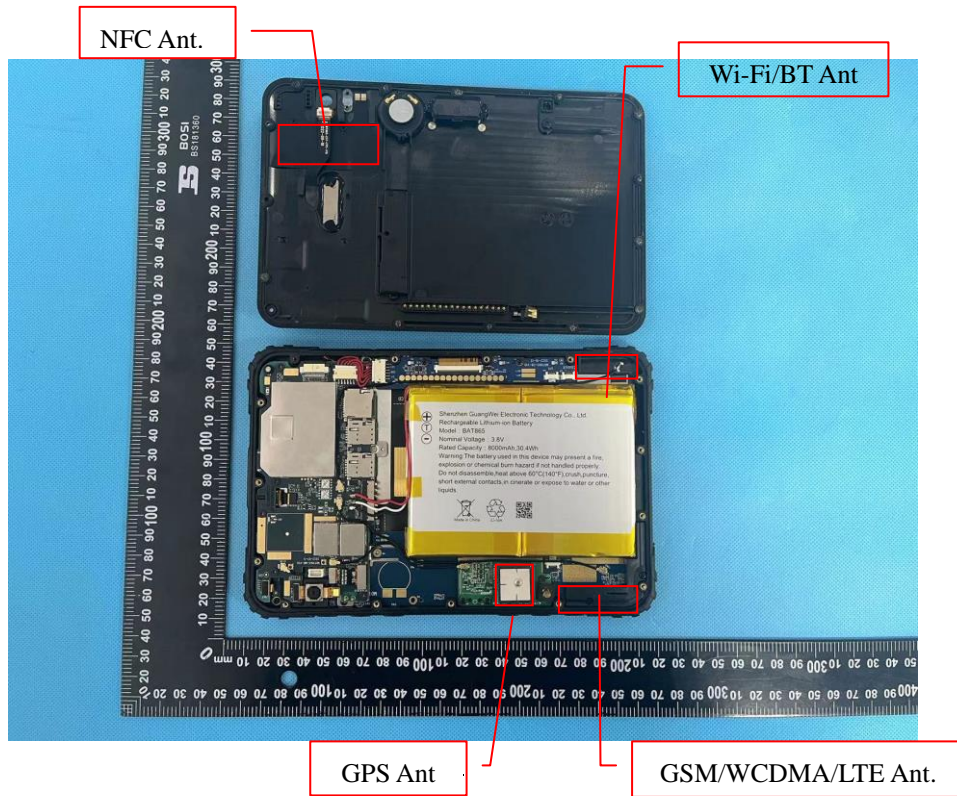
EUT View 1



EUT View 2



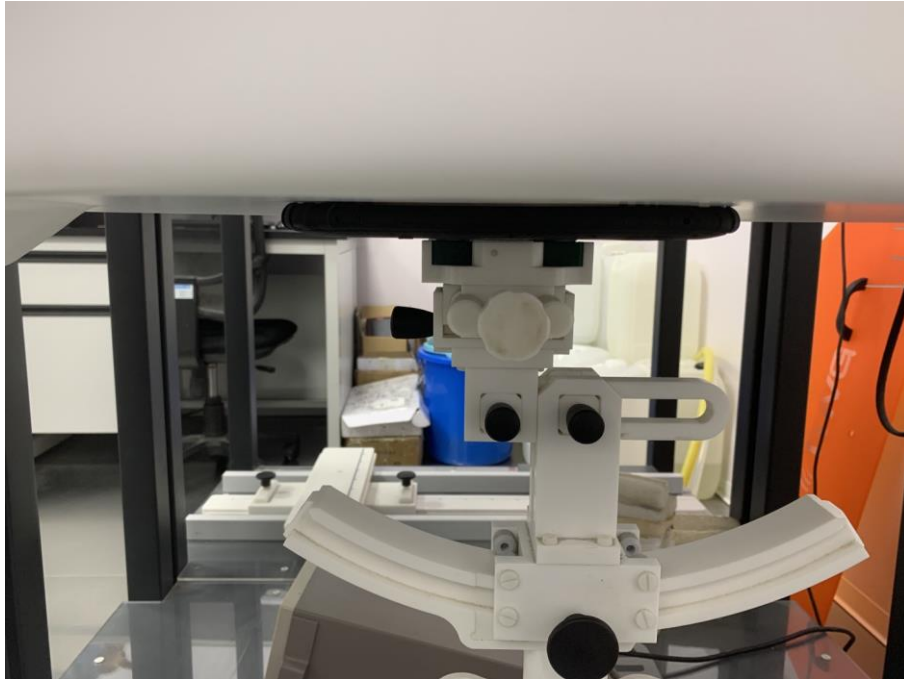
Antenna View



Annex D. Test Setup Photos

Body mode Exposure Conditions
Test distance: 0mm

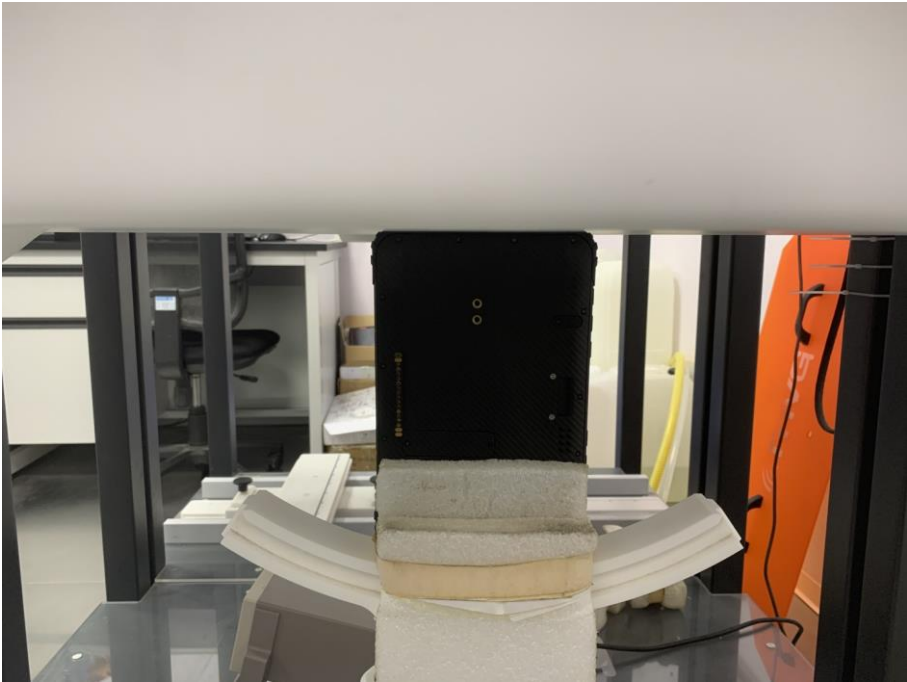
Body Front



Body Back



Body Right



Body Left



Body Top



Body Bottom



Annex E. Calibration Certificate

Please refer to the exhibit for the calibration certificate

******* END OF REPORT *******