

| Band | Bandwidth | Modulation | Channel | RB Configuration | Result(dBm) | Tune-up power (dBm) | Verdict |
|-------|-----------|------------|---------|------------------|-------------|---------------------|---------|
| Band7 | 5MHz | QPSK | 20775 | 1RB#0 | 21.71 | 22.5 | PASS |
| Band7 | 5MHz | QPSK | 20775 | 1RB#12 | 21.82 | 22.5 | PASS |
| Band7 | 5MHz | QPSK | 20775 | 1RB#24 | 21.63 | 22.5 | PASS |
| Band7 | 5MHz | QPSK | 20775 | 12RB#0 | 20.75 | 22.5 | PASS |
| Band7 | 5MHz | QPSK | 20775 | 12RB#6 | 20.68 | 22.5 | PASS |
| Band7 | 5MHz | QPSK | 20775 | 12RB#13 | 20.61 | 22.5 | PASS |
| Band7 | 5MHz | QPSK | 20775 | 25RB#0 | 20.72 | 22.5 | PASS |
| Band7 | 5MHz | QPSK | 21100 | 1RB#0 | 21.73 | 22.5 | PASS |
| Band7 | 5MHz | QPSK | 21100 | 1RB#12 | 21.96 | 22.5 | PASS |
| Band7 | 5MHz | QPSK | 21100 | 1RB#24 | 21.85 | 22.5 | PASS |
| Band7 | 5MHz | QPSK | 21100 | 12RB#0 | 20.96 | 22.5 | PASS |
| Band7 | 5MHz | QPSK | 21100 | 12RB#6 | 20.84 | 22.5 | PASS |
| Band7 | 5MHz | QPSK | 21100 | 12RB#13 | 20.85 | 22.5 | PASS |
| Band7 | 5MHz | QPSK | 21100 | 25RB#0 | 20.83 | 22.5 | PASS |
| Band7 | 5MHz | QPSK | 21425 | 1RB#0 | 22.02 | 22.5 | PASS |
| Band7 | 5MHz | QPSK | 21425 | 1RB#12 | 22.11 | 22.5 | PASS |
| Band7 | 5MHz | QPSK | 21425 | 1RB#24 | 22.16 | 22.5 | PASS |
| Band7 | 5MHz | QPSK | 21425 | 12RB#0 | 21.07 | 22.5 | PASS |
| Band7 | 5MHz | QPSK | 21425 | 12RB#6 | 21.05 | 22.5 | PASS |
| Band7 | 5MHz | QPSK | 21425 | 12RB#13 | 20.56 | 22.5 | PASS |
| Band7 | 5MHz | QPSK | 21425 | 25RB#0 | 20.63 | 22.5 | PASS |
| Band7 | 5MHz | 16QAM | 20775 | 1RB#0 | 20.64 | 22.5 | PASS |
| Band7 | 5MHz | 16QAM | 20775 | 1RB#12 | 20.72 | 22.5 | PASS |
| Band7 | 5MHz | 16QAM | 20775 | 1RB#24 | 20.53 | 22.5 | PASS |
| Band7 | 5MHz | 16QAM | 20775 | 12RB#0 | 20.62 | 22.5 | PASS |
| Band7 | 5MHz | 16QAM | 20775 | 12RB#6 | 20.61 | 22.5 | PASS |
| Band7 | 5MHz | 16QAM | 20775 | 12RB#13 | 20.62 | 22.5 | PASS |
| Band7 | 5MHz | 16QAM | 20775 | 25RB#0 | 20.73 | 22.5 | PASS |
| Band7 | 5MHz | 16QAM | 21100 | 1RB#0 | 20.76 | 22.5 | PASS |
| Band7 | 5MHz | 16QAM | 21100 | 1RB#12 | 20.98 | 22.5 | PASS |
| Band7 | 5MHz | 16QAM | 21100 | 1RB#24 | 20.86 | 22.5 | PASS |
| Band7 | 5MHz | 16QAM | 21100 | 12RB#0 | 20.82 | 22.5 | PASS |
| Band7 | 5MHz | 16QAM | 21100 | 12RB#6 | 20.72 | 22.5 | PASS |

| | | | | | | | |
|-------|-------|-------|-------|---------|-------|------|------|
| Band7 | 5MHz | 16QAM | 21100 | 12RB#13 | 20.83 | 22.5 | PASS |
| Band7 | 5MHz | 16QAM | 21100 | 25RB#0 | 20.84 | 22.5 | PASS |
| Band7 | 5MHz | 16QAM | 21425 | 1RB#0 | 20.95 | 22.5 | PASS |
| Band7 | 5MHz | 16QAM | 21425 | 1RB#12 | 20.73 | 22.5 | PASS |
| Band7 | 5MHz | 16QAM | 21425 | 1RB#24 | 21.06 | 22.5 | PASS |
| Band7 | 5MHz | 16QAM | 21425 | 12RB#0 | 20.17 | 22.5 | PASS |
| Band7 | 5MHz | 16QAM | 21425 | 12RB#6 | 20.85 | 22.5 | PASS |
| Band7 | 5MHz | 16QAM | 21425 | 12RB#13 | 20.43 | 22.5 | PASS |
| Band7 | 5MHz | 16QAM | 21425 | 25RB#0 | 20.62 | 22.5 | PASS |
| Band7 | 10MHz | QPSK | 20800 | 1RB#0 | 21.31 | 22.5 | PASS |
| Band7 | 10MHz | QPSK | 20800 | 1RB#24 | 21.42 | 22.5 | PASS |
| Band7 | 10MHz | QPSK | 20800 | 1RB#49 | 21.23 | 22.5 | PASS |
| Band7 | 10MHz | QPSK | 20800 | 25RB#0 | 20.38 | 22.5 | PASS |
| Band7 | 10MHz | QPSK | 20800 | 25RB#12 | 20.39 | 22.5 | PASS |
| Band7 | 10MHz | QPSK | 20800 | 25RB#25 | 20.37 | 22.5 | PASS |
| Band7 | 10MHz | QPSK | 20800 | 50RB#0 | 20.35 | 22.5 | PASS |
| Band7 | 10MHz | QPSK | 21100 | 1RB#0 | 21.36 | 22.5 | PASS |
| Band7 | 10MHz | QPSK | 21100 | 1RB#24 | 21.52 | 22.5 | PASS |
| Band7 | 10MHz | QPSK | 21100 | 1RB#49 | 21.33 | 22.5 | PASS |
| Band7 | 10MHz | QPSK | 21100 | 25RB#0 | 20.31 | 22.5 | PASS |
| Band7 | 10MHz | QPSK | 21100 | 25RB#12 | 20.32 | 22.5 | PASS |
| Band7 | 10MHz | QPSK | 21100 | 25RB#25 | 20.33 | 22.5 | PASS |
| Band7 | 10MHz | QPSK | 21100 | 50RB#0 | 20.31 | 22.5 | PASS |
| Band7 | 10MHz | QPSK | 21400 | 1RB#0 | 21.42 | 22.5 | PASS |
| Band7 | 10MHz | QPSK | 21400 | 1RB#24 | 21.66 | 22.5 | PASS |
| Band7 | 10MHz | QPSK | 21400 | 1RB#49 | 21.45 | 22.5 | PASS |
| Band7 | 10MHz | QPSK | 21400 | 25RB#0 | 20.34 | 22.5 | PASS |
| Band7 | 10MHz | QPSK | 21400 | 25RB#12 | 20.42 | 22.5 | PASS |
| Band7 | 10MHz | QPSK | 21400 | 25RB#25 | 20.43 | 22.5 | PASS |
| Band7 | 10MHz | QPSK | 21400 | 50RB#0 | 20.44 | 22.5 | PASS |
| Band7 | 10MHz | 16QAM | 20800 | 1RB#0 | 20.47 | 22.5 | PASS |
| Band7 | 10MHz | 16QAM | 20800 | 1RB#24 | 20.48 | 22.5 | PASS |
| Band7 | 10MHz | 16QAM | 20800 | 1RB#49 | 20.49 | 22.5 | PASS |
| Band7 | 10MHz | 16QAM | 20800 | 25RB#0 | 20.36 | 22.5 | PASS |
| Band7 | 10MHz | 16QAM | 20800 | 25RB#12 | 20.31 | 22.5 | PASS |
| Band7 | 10MHz | 16QAM | 20800 | 25RB#25 | 20.52 | 22.5 | PASS |
| Band7 | 10MHz | 16QAM | 20800 | 50RB#0 | 20.43 | 22.5 | PASS |

| | | | | | | | |
|-------|-------|-------|-------|---------|-------|------|------|
| Band7 | 10MHz | 16QAM | 21100 | 1RB#0 | 20.46 | 22.5 | PASS |
| Band7 | 10MHz | 16QAM | 21100 | 1RB#24 | 20.55 | 22.5 | PASS |
| Band7 | 10MHz | 16QAM | 21100 | 1RB#49 | 20.31 | 22.5 | PASS |
| Band7 | 10MHz | 16QAM | 21100 | 25RB#0 | 20.32 | 22.5 | PASS |
| Band7 | 10MHz | 16QAM | 21100 | 25RB#12 | 20.33 | 22.5 | PASS |
| Band7 | 10MHz | 16QAM | 21100 | 25RB#25 | 20.32 | 22.5 | PASS |
| Band7 | 10MHz | 16QAM | 21100 | 50RB#0 | 20.36 | 22.5 | PASS |
| Band7 | 10MHz | 16QAM | 21400 | 1RB#0 | 20.51 | 22.5 | PASS |
| Band7 | 10MHz | 16QAM | 21400 | 1RB#24 | 20.63 | 22.5 | PASS |
| Band7 | 10MHz | 16QAM | 21400 | 1RB#49 | 20.44 | 22.5 | PASS |
| Band7 | 10MHz | 16QAM | 21400 | 25RB#0 | 20.35 | 22.5 | PASS |
| Band7 | 10MHz | 16QAM | 21400 | 25RB#12 | 20.36 | 22.5 | PASS |
| Band7 | 10MHz | 16QAM | 21400 | 25RB#25 | 20.33 | 22.5 | PASS |
| Band7 | 10MHz | 16QAM | 21400 | 50RB#0 | 20.34 | 22.5 | PASS |
| Band7 | 15MHz | QPSK | 20825 | 1RB#0 | 21.05 | 22.5 | PASS |
| Band7 | 15MHz | QPSK | 20825 | 1RB#38 | 21.06 | 22.5 | PASS |
| Band7 | 15MHz | QPSK | 20825 | 1RB#74 | 20.84 | 22.5 | PASS |
| Band7 | 15MHz | QPSK | 20825 | 38RB#0 | 20.33 | 22.5 | PASS |
| Band7 | 15MHz | QPSK | 20825 | 38RB#18 | 20.96 | 22.5 | PASS |
| Band7 | 15MHz | QPSK | 20825 | 38RB#37 | 20.47 | 22.5 | PASS |
| Band7 | 15MHz | QPSK | 20825 | 75RB#0 | 20.95 | 22.5 | PASS |
| Band7 | 15MHz | QPSK | 21100 | 1RB#0 | 20.93 | 22.5 | PASS |
| Band7 | 15MHz | QPSK | 21100 | 1RB#38 | 21.06 | 22.5 | PASS |
| Band7 | 15MHz | QPSK | 21100 | 1RB#74 | 21.01 | 22.5 | PASS |
| Band7 | 15MHz | QPSK | 21100 | 38RB#0 | 20.91 | 22.5 | PASS |
| Band7 | 15MHz | QPSK | 21100 | 38RB#18 | 20.92 | 22.5 | PASS |
| Band7 | 15MHz | QPSK | 21100 | 38RB#37 | 20.93 | 22.5 | PASS |
| Band7 | 15MHz | QPSK | 21100 | 75RB#0 | 20.86 | 22.5 | PASS |
| Band7 | 15MHz | QPSK | 21375 | 1RB#0 | 21.84 | 22.5 | PASS |
| Band7 | 15MHz | QPSK | 21375 | 1RB#38 | 22.07 | 22.5 | PASS |
| Band7 | 15MHz | QPSK | 21375 | 1RB#74 | 21.98 | 22.5 | PASS |
| Band7 | 15MHz | QPSK | 21375 | 38RB#0 | 20.69 | 22.5 | PASS |
| Band7 | 15MHz | QPSK | 21375 | 38RB#18 | 20.97 | 22.5 | PASS |
| Band7 | 15MHz | QPSK | 21375 | 38RB#37 | 20.41 | 22.5 | PASS |
| Band7 | 15MHz | QPSK | 21375 | 75RB#0 | 20.81 | 22.5 | PASS |
| Band7 | 15MHz | 16QAM | 20825 | 1RB#0 | 20.90 | 22.5 | PASS |
| Band7 | 15MHz | 16QAM | 20825 | 1RB#38 | 20.43 | 22.5 | PASS |

| | | | | | | | |
|-------|-------|-------|-------|---------|--------------|------|------|
| Band7 | 15MHz | 16QAM | 20825 | 1RB#74 | 20.92 | 22.5 | PASS |
| Band7 | 15MHz | 16QAM | 20825 | 38RB#0 | 20.96 | 22.5 | PASS |
| Band7 | 15MHz | 16QAM | 20825 | 38RB#18 | 20.32 | 22.5 | PASS |
| Band7 | 15MHz | 16QAM | 20825 | 38RB#37 | 20.34 | 22.5 | PASS |
| Band7 | 15MHz | 16QAM | 20825 | 75RB#0 | 20.92 | 22.5 | PASS |
| Band7 | 15MHz | 16QAM | 21100 | 1RB#0 | 20.33 | 22.5 | PASS |
| Band7 | 15MHz | 16QAM | 21100 | 1RB#38 | 20.36 | 22.5 | PASS |
| Band7 | 15MHz | 16QAM | 21100 | 1RB#74 | 20.97 | 22.5 | PASS |
| Band7 | 15MHz | 16QAM | 21100 | 38RB#0 | 20.86 | 22.5 | PASS |
| Band7 | 15MHz | 16QAM | 21100 | 38RB#18 | 20.96 | 22.5 | PASS |
| Band7 | 15MHz | 16QAM | 21100 | 38RB#37 | 20.83 | 22.5 | PASS |
| Band7 | 15MHz | 16QAM | 21100 | 75RB#0 | 20.81 | 22.5 | PASS |
| Band7 | 15MHz | 16QAM | 21375 | 1RB#0 | 20.92 | 22.5 | PASS |
| Band7 | 15MHz | 16QAM | 21375 | 1RB#38 | 21.13 | 22.5 | PASS |
| Band7 | 15MHz | 16QAM | 21375 | 1RB#74 | 21.06 | 22.5 | PASS |
| Band7 | 15MHz | 16QAM | 21375 | 38RB#0 | 20.55 | 22.5 | PASS |
| Band7 | 15MHz | 16QAM | 21375 | 38RB#18 | 20.54 | 22.5 | PASS |
| Band7 | 15MHz | 16QAM | 21375 | 38RB#37 | 20.41 | 22.5 | PASS |
| Band7 | 15MHz | 16QAM | 21375 | 75RB#0 | 20.42 | 22.5 | PASS |
| Band7 | 20MHz | QPSK | 20850 | 1RB#0 | 21.73 | 22.5 | PASS |
| Band7 | 20MHz | QPSK | 20850 | 1RB#49 | 21.86 | 22.5 | PASS |
| Band7 | 20MHz | QPSK | 20850 | 1RB#99 | 21.57 | 22.5 | PASS |
| Band7 | 20MHz | QPSK | 20850 | 50RB#0 | 20.88 | 22.5 | PASS |
| Band7 | 20MHz | QPSK | 20850 | 50RB#25 | 20.83 | 22.5 | PASS |
| Band7 | 20MHz | QPSK | 20850 | 50RB#50 | 20.76 | 22.5 | PASS |
| Band7 | 20MHz | QPSK | 20850 | 100RB#0 | 20.81 | 22.5 | PASS |
| Band7 | 20MHz | QPSK | 21100 | 1RB#0 | 21.72 | 22.5 | PASS |
| Band7 | 20MHz | QPSK | 21100 | 1RB#49 | 21.63 | 22.5 | PASS |
| Band7 | 20MHz | QPSK | 21100 | 1RB#99 | 21.34 | 22.5 | PASS |
| Band7 | 20MHz | QPSK | 21100 | 50RB#0 | 20.86 | 22.5 | PASS |
| Band7 | 20MHz | QPSK | 21100 | 50RB#25 | 20.88 | 22.5 | PASS |
| Band7 | 20MHz | QPSK | 21100 | 50RB#50 | 20.89 | 22.5 | PASS |
| Band7 | 20MHz | QPSK | 21100 | 100RB#0 | 20.84 | 22.5 | PASS |
| Band7 | 20MHz | QPSK | 21350 | 1RB#0 | 21.92 | 22.5 | PASS |
| Band7 | 20MHz | QPSK | 21350 | 1RB#49 | 22.19 | 22.5 | PASS |
| Band7 | 20MHz | QPSK | 21350 | 1RB#99 | 22.15 | 22.5 | PASS |
| Band7 | 20MHz | QPSK | 21350 | 50RB#0 | 21.25 | 22.5 | PASS |

| | | | | | | | |
|-------|-------|-------|-------|---------|-------|------|------|
| Band7 | 20MHz | QPSK | 21350 | 50RB#25 | 21.06 | 22.5 | PASS |
| Band7 | 20MHz | QPSK | 21350 | 50RB#50 | 21.04 | 22.5 | PASS |
| Band7 | 20MHz | QPSK | 21350 | 100RB#0 | 21.05 | 22.5 | PASS |
| Band7 | 20MHz | 16QAM | 20850 | 1RB#0 | 20.53 | 22.5 | PASS |
| Band7 | 20MHz | 16QAM | 20850 | 1RB#49 | 20.65 | 22.5 | PASS |
| Band7 | 20MHz | 16QAM | 20850 | 1RB#99 | 20.46 | 22.5 | PASS |
| Band7 | 20MHz | 16QAM | 20850 | 50RB#0 | 20.84 | 22.5 | PASS |
| Band7 | 20MHz | 16QAM | 20850 | 50RB#25 | 20.95 | 22.5 | PASS |
| Band7 | 20MHz | 16QAM | 20850 | 50RB#50 | 20.76 | 22.5 | PASS |
| Band7 | 20MHz | 16QAM | 20850 | 100RB#0 | 20.84 | 22.5 | PASS |
| Band7 | 20MHz | 16QAM | 21100 | 1RB#0 | 20.95 | 22.5 | PASS |
| Band7 | 20MHz | 16QAM | 21100 | 1RB#49 | 20.73 | 22.5 | PASS |
| Band7 | 20MHz | 16QAM | 21100 | 1RB#99 | 20.74 | 22.5 | PASS |
| Band7 | 20MHz | 16QAM | 21100 | 50RB#0 | 20.92 | 22.5 | PASS |
| Band7 | 20MHz | 16QAM | 21100 | 50RB#25 | 20.96 | 22.5 | PASS |
| Band7 | 20MHz | 16QAM | 21100 | 50RB#50 | 20.88 | 22.5 | PASS |
| Band7 | 20MHz | 16QAM | 21100 | 100RB#0 | 20.87 | 22.5 | PASS |
| Band7 | 20MHz | 16QAM | 21350 | 1RB#0 | 20.72 | 22.5 | PASS |
| Band7 | 20MHz | 16QAM | 21350 | 1RB#49 | 20.63 | 22.5 | PASS |
| Band7 | 20MHz | 16QAM | 21350 | 1RB#99 | 21.06 | 22.5 | PASS |
| Band7 | 20MHz | 16QAM | 21350 | 50RB#0 | 20.44 | 22.5 | PASS |
| Band7 | 20MHz | 16QAM | 21350 | 50RB#25 | 20.45 | 22.5 | PASS |
| Band7 | 20MHz | 16QAM | 21350 | 50RB#50 | 20.46 | 22.5 | PASS |
| Band7 | 20MHz | 16QAM | 21350 | 100RB#0 | 20.45 | 22.5 | PASS |

| Band | Bandwidth | Modulation | Channel | RB Configuration | Result(dBm) | Tune-up power (dBm) | Verdict |
|--------|-----------|------------|---------|------------------|-------------|---------------------|---------|
| Band12 | 1.4MHz | QPSK | 23017 | 1RB#0 | 23.42 | 24.0 | PASS |
| Band12 | 1.4MHz | QPSK | 23017 | 1RB#2 | 23.53 | 24.0 | PASS |
| Band12 | 1.4MHz | QPSK | 23017 | 1RB#5 | 23.44 | 24.0 | PASS |
| Band12 | 1.4MHz | QPSK | 23017 | 3RB#0 | 23.65 | 24.0 | PASS |
| Band12 | 1.4MHz | QPSK | 23017 | 3RB#1 | 23.56 | 24.0 | PASS |
| Band12 | 1.4MHz | QPSK | 23017 | 3RB#3 | 23.64 | 24.0 | PASS |
| Band12 | 1.4MHz | QPSK | 23017 | 6RB#0 | 22.52 | 24.0 | PASS |

| | | | | | | | |
|--------|--------|-------|-------|-------|-------|------|------|
| Band12 | 1.4MHz | QPSK | 23095 | 1RB#0 | 23.43 | 24.0 | PASS |
| Band12 | 1.4MHz | QPSK | 23095 | 1RB#2 | 23.66 | 24.0 | PASS |
| Band12 | 1.4MHz | QPSK | 23095 | 1RB#5 | 23.44 | 24.0 | PASS |
| Band12 | 1.4MHz | QPSK | 23095 | 3RB#0 | 23.55 | 24.0 | PASS |
| Band12 | 1.4MHz | QPSK | 23095 | 3RB#1 | 23.53 | 24.0 | PASS |
| Band12 | 1.4MHz | QPSK | 23095 | 3RB#3 | 23.66 | 24.0 | PASS |
| Band12 | 1.4MHz | QPSK | 23095 | 6RB#0 | 22.47 | 24.0 | PASS |
| Band12 | 1.4MHz | QPSK | 23173 | 1RB#0 | 23.42 | 24.0 | PASS |
| Band12 | 1.4MHz | QPSK | 23173 | 1RB#2 | 23.56 | 24.0 | PASS |
| Band12 | 1.4MHz | QPSK | 23173 | 1RB#5 | 23.42 | 24.0 | PASS |
| Band12 | 1.4MHz | QPSK | 23173 | 3RB#0 | 23.53 | 24.0 | PASS |
| Band12 | 1.4MHz | QPSK | 23173 | 3RB#1 | 23.54 | 24.0 | PASS |
| Band12 | 1.4MHz | QPSK | 23173 | 3RB#3 | 23.62 | 24.0 | PASS |
| Band12 | 1.4MHz | QPSK | 23173 | 6RB#0 | 22.43 | 24.0 | PASS |
| Band12 | 1.4MHz | 16QAM | 23017 | 1RB#0 | 22.40 | 24.0 | PASS |
| Band12 | 1.4MHz | 16QAM | 23017 | 1RB#2 | 22.53 | 24.0 | PASS |
| Band12 | 1.4MHz | 16QAM | 23017 | 1RB#5 | 22.32 | 24.0 | PASS |
| Band12 | 1.4MHz | 16QAM | 23017 | 3RB#0 | 22.49 | 24.0 | PASS |
| Band12 | 1.4MHz | 16QAM | 23017 | 3RB#1 | 22.42 | 24.0 | PASS |
| Band12 | 1.4MHz | 16QAM | 23017 | 3RB#3 | 22.43 | 24.0 | PASS |
| Band12 | 1.4MHz | 16QAM | 23017 | 6RB#0 | 21.55 | 24.0 | PASS |
| Band12 | 1.4MHz | 16QAM | 23095 | 1RB#0 | 22.47 | 24.0 | PASS |
| Band12 | 1.4MHz | 16QAM | 23095 | 1RB#2 | 22.61 | 24.0 | PASS |
| Band12 | 1.4MHz | 16QAM | 23095 | 1RB#5 | 22.47 | 24.0 | PASS |
| Band12 | 1.4MHz | 16QAM | 23095 | 3RB#0 | 22.46 | 24.0 | PASS |
| Band12 | 1.4MHz | 16QAM | 23095 | 3RB#1 | 22.50 | 24.0 | PASS |
| Band12 | 1.4MHz | 16QAM | 23095 | 3RB#3 | 22.46 | 24.0 | PASS |
| Band12 | 1.4MHz | 16QAM | 23095 | 6RB#0 | 21.52 | 24.0 | PASS |
| Band12 | 1.4MHz | 16QAM | 23173 | 1RB#0 | 22.53 | 24.0 | PASS |
| Band12 | 1.4MHz | 16QAM | 23173 | 1RB#2 | 22.59 | 24.0 | PASS |
| Band12 | 1.4MHz | 16QAM | 23173 | 1RB#5 | 22.42 | 24.0 | PASS |
| Band12 | 1.4MHz | 16QAM | 23173 | 3RB#0 | 22.43 | 24.0 | PASS |
| Band12 | 1.4MHz | 16QAM | 23173 | 3RB#1 | 22.42 | 24.0 | PASS |
| Band12 | 1.4MHz | 16QAM | 23173 | 3RB#3 | 22.43 | 24.0 | PASS |
| Band12 | 1.4MHz | 16QAM | 23173 | 6RB#0 | 21.41 | 24.0 | PASS |
| Band12 | 3MHz | QPSK | 23025 | 1RB#0 | 23.42 | 24.0 | PASS |
| Band12 | 3MHz | QPSK | 23025 | 1RB#8 | 23.39 | 24.0 | PASS |

| | | | | | | | |
|--------|------|-------|-------|--------|-------|------|------|
| Band12 | 3MHz | QPSK | 23025 | 1RB#14 | 23.41 | 24.0 | PASS |
| Band12 | 3MHz | QPSK | 23025 | 8RB#0 | 22.39 | 24.0 | PASS |
| Band12 | 3MHz | QPSK | 23025 | 8RB#4 | 22.42 | 24.0 | PASS |
| Band12 | 3MHz | QPSK | 23025 | 8RB#7 | 22.53 | 24.0 | PASS |
| Band12 | 3MHz | QPSK | 23025 | 15RB#0 | 22.51 | 24.0 | PASS |
| Band12 | 3MHz | QPSK | 23095 | 1RB#0 | 23.42 | 24.0 | PASS |
| Band12 | 3MHz | QPSK | 23095 | 1RB#8 | 23.41 | 24.0 | PASS |
| Band12 | 3MHz | QPSK | 23095 | 1RB#14 | 23.42 | 24.0 | PASS |
| Band12 | 3MHz | QPSK | 23095 | 8RB#0 | 22.53 | 24.0 | PASS |
| Band12 | 3MHz | QPSK | 23095 | 8RB#4 | 22.43 | 24.0 | PASS |
| Band12 | 3MHz | QPSK | 23095 | 8RB#7 | 22.41 | 24.0 | PASS |
| Band12 | 3MHz | QPSK | 23095 | 15RB#0 | 22.45 | 24.0 | PASS |
| Band12 | 3MHz | QPSK | 23165 | 1RB#0 | 23.44 | 24.0 | PASS |
| Band12 | 3MHz | QPSK | 23165 | 1RB#8 | 23.42 | 24.0 | PASS |
| Band12 | 3MHz | QPSK | 23165 | 1RB#14 | 23.46 | 24.0 | PASS |
| Band12 | 3MHz | QPSK | 23165 | 8RB#0 | 22.55 | 24.0 | PASS |
| Band12 | 3MHz | QPSK | 23165 | 8RB#4 | 22.41 | 24.0 | PASS |
| Band12 | 3MHz | QPSK | 23165 | 8RB#7 | 22.41 | 24.0 | PASS |
| Band12 | 3MHz | QPSK | 23165 | 15RB#0 | 22.43 | 24.0 | PASS |
| Band12 | 3MHz | 16QAM | 23025 | 1RB#0 | 22.75 | 24.0 | PASS |
| Band12 | 3MHz | 16QAM | 23025 | 1RB#8 | 22.61 | 24.0 | PASS |
| Band12 | 3MHz | 16QAM | 23025 | 1RB#14 | 22.62 | 24.0 | PASS |
| Band12 | 3MHz | 16QAM | 23025 | 8RB#0 | 21.53 | 24.0 | PASS |
| Band12 | 3MHz | 16QAM | 23025 | 8RB#4 | 21.52 | 24.0 | PASS |
| Band12 | 3MHz | 16QAM | 23025 | 8RB#7 | 21.51 | 24.0 | PASS |
| Band12 | 3MHz | 16QAM | 23025 | 15RB#0 | 21.53 | 24.0 | PASS |
| Band12 | 3MHz | 16QAM | 23095 | 1RB#0 | 22.66 | 24.0 | PASS |
| Band12 | 3MHz | 16QAM | 23095 | 1RB#8 | 22.51 | 24.0 | PASS |
| Band12 | 3MHz | 16QAM | 23095 | 1RB#14 | 22.52 | 24.0 | PASS |
| Band12 | 3MHz | 16QAM | 23095 | 8RB#0 | 21.53 | 24.0 | PASS |
| Band12 | 3MHz | 16QAM | 23095 | 8RB#4 | 21.54 | 24.0 | PASS |
| Band12 | 3MHz | 16QAM | 23095 | 8RB#7 | 21.51 | 24.0 | PASS |
| Band12 | 3MHz | 16QAM | 23095 | 15RB#0 | 21.42 | 24.0 | PASS |
| Band12 | 3MHz | 16QAM | 23165 | 1RB#0 | 22.39 | 24.0 | PASS |
| Band12 | 3MHz | 16QAM | 23165 | 1RB#8 | 22.41 | 24.0 | PASS |
| Band12 | 3MHz | 16QAM | 23165 | 1RB#14 | 22.32 | 24.0 | PASS |
| Band12 | 3MHz | 16QAM | 23165 | 8RB#0 | 21.53 | 24.0 | PASS |

| | | | | | | | |
|--------|------|-------|-------|---------|-------|------|------|
| Band12 | 3MHz | 16QAM | 23165 | 8RB#4 | 21.55 | 24.0 | PASS |
| Band12 | 3MHz | 16QAM | 23165 | 8RB#7 | 21.54 | 24.0 | PASS |
| Band12 | 3MHz | 16QAM | 23165 | 15RB#0 | 21.41 | 24.0 | PASS |
| Band12 | 5MHz | QPSK | 23035 | 1RB#0 | 23.32 | 24.0 | PASS |
| Band12 | 5MHz | QPSK | 23035 | 1RB#12 | 23.53 | 24.0 | PASS |
| Band12 | 5MHz | QPSK | 23035 | 1RB#24 | 23.31 | 24.0 | PASS |
| Band12 | 5MHz | QPSK | 23035 | 12RB#0 | 22.52 | 24.0 | PASS |
| Band12 | 5MHz | QPSK | 23035 | 12RB#6 | 22.43 | 24.0 | PASS |
| Band12 | 5MHz | QPSK | 23035 | 12RB#13 | 22.45 | 24.0 | PASS |
| Band12 | 5MHz | QPSK | 23035 | 25RB#0 | 22.53 | 24.0 | PASS |
| Band12 | 5MHz | QPSK | 23095 | 1RB#0 | 23.44 | 24.0 | PASS |
| Band12 | 5MHz | QPSK | 23095 | 1RB#12 | 23.42 | 24.0 | PASS |
| Band12 | 5MHz | QPSK | 23095 | 1RB#24 | 23.33 | 24.0 | PASS |
| Band12 | 5MHz | QPSK | 23095 | 12RB#0 | 22.41 | 24.0 | PASS |
| Band12 | 5MHz | QPSK | 23095 | 12RB#6 | 22.42 | 24.0 | PASS |
| Band12 | 5MHz | QPSK | 23095 | 12RB#13 | 22.53 | 24.0 | PASS |
| Band12 | 5MHz | QPSK | 23095 | 25RB#0 | 22.56 | 24.0 | PASS |
| Band12 | 5MHz | QPSK | 23155 | 1RB#0 | 23.34 | 24.0 | PASS |
| Band12 | 5MHz | QPSK | 23155 | 1RB#12 | 23.51 | 24.0 | PASS |
| Band12 | 5MHz | QPSK | 23155 | 1RB#24 | 23.42 | 24.0 | PASS |
| Band12 | 5MHz | QPSK | 23155 | 12RB#0 | 22.33 | 24.0 | PASS |
| Band12 | 5MHz | QPSK | 23155 | 12RB#6 | 22.46 | 24.0 | PASS |
| Band12 | 5MHz | QPSK | 23155 | 12RB#13 | 22.34 | 24.0 | PASS |
| Band12 | 5MHz | QPSK | 23155 | 25RB#0 | 22.40 | 24.0 | PASS |
| Band12 | 5MHz | 16QAM | 23035 | 1RB#0 | 22.42 | 24.0 | PASS |
| Band12 | 5MHz | 16QAM | 23035 | 1RB#12 | 22.61 | 24.0 | PASS |
| Band12 | 5MHz | 16QAM | 23035 | 1RB#24 | 22.39 | 24.0 | PASS |
| Band12 | 5MHz | 16QAM | 23035 | 12RB#0 | 21.44 | 24.0 | PASS |
| Band12 | 5MHz | 16QAM | 23035 | 12RB#6 | 21.42 | 24.0 | PASS |
| Band12 | 5MHz | 16QAM | 23035 | 12RB#13 | 21.53 | 24.0 | PASS |
| Band12 | 5MHz | 16QAM | 23035 | 25RB#0 | 21.56 | 24.0 | PASS |
| Band12 | 5MHz | 16QAM | 23095 | 1RB#0 | 22.62 | 24.0 | PASS |
| Band12 | 5MHz | 16QAM | 23095 | 1RB#12 | 22.71 | 24.0 | PASS |
| Band12 | 5MHz | 16QAM | 23095 | 1RB#24 | 22.52 | 24.0 | PASS |
| Band12 | 5MHz | 16QAM | 23095 | 12RB#0 | 21.63 | 24.0 | PASS |
| Band12 | 5MHz | 16QAM | 23095 | 12RB#6 | 21.52 | 24.0 | PASS |
| Band12 | 5MHz | 16QAM | 23095 | 12RB#13 | 21.61 | 24.0 | PASS |

| | | | | | | | |
|--------|-------|-------|-------|---------|--------------|------|------|
| Band12 | 5MHz | 16QAM | 23095 | 25RB#0 | 21.62 | 24.0 | PASS |
| Band12 | 5MHz | 16QAM | 23155 | 1RB#0 | 22.43 | 24.0 | PASS |
| Band12 | 5MHz | 16QAM | 23155 | 1RB#12 | 22.56 | 24.0 | PASS |
| Band12 | 5MHz | 16QAM | 23155 | 1RB#24 | 22.41 | 24.0 | PASS |
| Band12 | 5MHz | 16QAM | 23155 | 12RB#0 | 21.42 | 24.0 | PASS |
| Band12 | 5MHz | 16QAM | 23155 | 12RB#6 | 21.46 | 24.0 | PASS |
| Band12 | 5MHz | 16QAM | 23155 | 12RB#13 | 21.46 | 24.0 | PASS |
| Band12 | 5MHz | 16QAM | 23155 | 25RB#0 | 21.59 | 24.0 | PASS |
| Band12 | 10MHz | QPSK | 23060 | 1RB#0 | 23.36 | 24.0 | PASS |
| Band12 | 10MHz | QPSK | 23060 | 1RB#24 | 23.72 | 24.0 | PASS |
| Band12 | 10MHz | QPSK | 23060 | 1RB#49 | 23.32 | 24.0 | PASS |
| Band12 | 10MHz | QPSK | 23060 | 25RB#0 | 22.53 | 24.0 | PASS |
| Band12 | 10MHz | QPSK | 23060 | 25RB#12 | 22.65 | 24.0 | PASS |
| Band12 | 10MHz | QPSK | 23060 | 25RB#25 | 22.54 | 24.0 | PASS |
| Band12 | 10MHz | QPSK | 23060 | 50RB#0 | 22.62 | 24.0 | PASS |
| Band12 | 10MHz | QPSK | 23095 | 1RB#0 | 23.43 | 24.0 | PASS |
| Band12 | 10MHz | QPSK | 23095 | 1RB#24 | 23.51 | 24.0 | PASS |
| Band12 | 10MHz | QPSK | 23095 | 1RB#49 | 23.32 | 24.0 | PASS |
| Band12 | 10MHz | QPSK | 23095 | 25RB#0 | 22.53 | 24.0 | PASS |
| Band12 | 10MHz | QPSK | 23095 | 25RB#12 | 22.64 | 24.0 | PASS |
| Band12 | 10MHz | QPSK | 23095 | 25RB#25 | 22.62 | 24.0 | PASS |
| Band12 | 10MHz | QPSK | 23095 | 50RB#0 | 22.73 | 24.0 | PASS |
| Band12 | 10MHz | QPSK | 23130 | 1RB#0 | 23.45 | 24.0 | PASS |
| Band12 | 10MHz | QPSK | 23130 | 1RB#24 | 23.51 | 24.0 | PASS |
| Band12 | 10MHz | QPSK | 23130 | 1RB#49 | 23.42 | 24.0 | PASS |
| Band12 | 10MHz | QPSK | 23130 | 25RB#0 | 22.46 | 24.0 | PASS |
| Band12 | 10MHz | QPSK | 23130 | 25RB#12 | 22.42 | 24.0 | PASS |
| Band12 | 10MHz | QPSK | 23130 | 25RB#25 | 22.46 | 24.0 | PASS |
| Band12 | 10MHz | QPSK | 23130 | 50RB#0 | 22.54 | 24.0 | PASS |
| Band12 | 10MHz | 16QAM | 23060 | 1RB#0 | 22.62 | 24.0 | PASS |
| Band12 | 10MHz | 16QAM | 23060 | 1RB#24 | 22.73 | 24.0 | PASS |
| Band12 | 10MHz | 16QAM | 23060 | 1RB#49 | 22.61 | 24.0 | PASS |
| Band12 | 10MHz | 16QAM | 23060 | 25RB#0 | 21.62 | 24.0 | PASS |
| Band12 | 10MHz | 16QAM | 23060 | 25RB#12 | 21.63 | 24.0 | PASS |
| Band12 | 10MHz | 16QAM | 23060 | 25RB#25 | 21.52 | 24.0 | PASS |
| Band12 | 10MHz | 16QAM | 23060 | 50RB#0 | 21.76 | 24.0 | PASS |
| Band12 | 10MHz | 16QAM | 23095 | 1RB#0 | 22.62 | 24.0 | PASS |

| | | | | | | | |
|--------|-------|-------|-------|---------|-------|------|------|
| Band12 | 10MHz | 16QAM | 23095 | 1RB#24 | 22.63 | 24.0 | PASS |
| Band12 | 10MHz | 16QAM | 23095 | 1RB#49 | 22.51 | 24.0 | PASS |
| Band12 | 10MHz | 16QAM | 23095 | 25RB#0 | 21.72 | 24.0 | PASS |
| Band12 | 10MHz | 16QAM | 23095 | 25RB#12 | 21.73 | 24.0 | PASS |
| Band12 | 10MHz | 16QAM | 23095 | 25RB#25 | 21.81 | 24.0 | PASS |
| Band12 | 10MHz | 16QAM | 23095 | 50RB#0 | 21.72 | 24.0 | PASS |
| Band12 | 10MHz | 16QAM | 23130 | 1RB#0 | 22.33 | 24.0 | PASS |
| Band12 | 10MHz | 16QAM | 23130 | 1RB#24 | 22.52 | 24.0 | PASS |
| Band12 | 10MHz | 16QAM | 23130 | 1RB#49 | 22.36 | 24.0 | PASS |
| Band12 | 10MHz | 16QAM | 23130 | 25RB#0 | 21.54 | 24.0 | PASS |
| Band12 | 10MHz | 16QAM | 23130 | 25RB#12 | 21.52 | 24.0 | PASS |
| Band12 | 10MHz | 16QAM | 23130 | 25RB#25 | 21.63 | 24.0 | PASS |
| Band12 | 10MHz | 16QAM | 23130 | 50RB#0 | 21.66 | 24.0 | PASS |

| Band | Bandwidth | Modulation | Channel | RB Configuration | Result(dBm) | Tune-up power (dBm) | Verdict |
|--------|-----------|------------|---------|------------------|-------------|---------------------|---------|
| Band17 | 5MHz | QPSK | 23755 | 1RB#0 | 23.51 | 24.0 | PASS |
| Band17 | 5MHz | QPSK | 23755 | 1RB#12 | 23.62 | 24.0 | PASS |
| Band17 | 5MHz | QPSK | 23755 | 1RB#24 | 23.43 | 24.0 | PASS |
| Band17 | 5MHz | QPSK | 23755 | 12RB#0 | 22.66 | 24.0 | PASS |
| Band17 | 5MHz | QPSK | 23755 | 12RB#6 | 22.65 | 24.0 | PASS |
| Band17 | 5MHz | QPSK | 23755 | 12RB#13 | 22.54 | 24.0 | PASS |
| Band17 | 5MHz | QPSK | 23755 | 25RB#0 | 22.62 | 24.0 | PASS |
| Band17 | 5MHz | QPSK | 23790 | 1RB#0 | 23.53 | 24.0 | PASS |
| Band17 | 5MHz | QPSK | 23790 | 1RB#12 | 23.55 | 24.0 | PASS |
| Band17 | 5MHz | QPSK | 23790 | 1RB#24 | 23.46 | 24.0 | PASS |
| Band17 | 5MHz | QPSK | 23790 | 12RB#0 | 22.42 | 24.0 | PASS |
| Band17 | 5MHz | QPSK | 23790 | 12RB#6 | 22.43 | 24.0 | PASS |
| Band17 | 5MHz | QPSK | 23790 | 12RB#13 | 22.51 | 24.0 | PASS |
| Band17 | 5MHz | QPSK | 23790 | 25RB#0 | 22.53 | 24.0 | PASS |
| Band17 | 5MHz | QPSK | 23825 | 1RB#0 | 23.42 | 24.0 | PASS |
| Band17 | 5MHz | QPSK | 23825 | 1RB#12 | 23.61 | 24.0 | PASS |
| Band17 | 5MHz | QPSK | 23825 | 1RB#24 | 23.42 | 24.0 | PASS |
| Band17 | 5MHz | QPSK | 23825 | 12RB#0 | 22.43 | 24.0 | PASS |
| Band17 | 5MHz | QPSK | 23825 | 12RB#6 | 22.56 | 24.0 | PASS |

| | | | | | | | |
|--------|-------|-------|-------|---------|--------------|------|------|
| Band17 | 5MHz | QPSK | 23825 | 12RB#13 | 22.44 | 24.0 | PASS |
| Band17 | 5MHz | QPSK | 23825 | 25RB#0 | 22.52 | 24.0 | PASS |
| Band17 | 5MHz | 16QAM | 23755 | 1RB#0 | 22.73 | 24.0 | PASS |
| Band17 | 5MHz | 16QAM | 23755 | 1RB#12 | 22.76 | 24.0 | PASS |
| Band17 | 5MHz | 16QAM | 23755 | 1RB#24 | 22.64 | 24.0 | PASS |
| Band17 | 5MHz | 16QAM | 23755 | 12RB#0 | 21.71 | 24.0 | PASS |
| Band17 | 5MHz | 16QAM | 23755 | 12RB#6 | 21.72 | 24.0 | PASS |
| Band17 | 5MHz | 16QAM | 23755 | 12RB#13 | 21.62 | 24.0 | PASS |
| Band17 | 5MHz | 16QAM | 23755 | 25RB#0 | 21.63 | 24.0 | PASS |
| Band17 | 5MHz | 16QAM | 23790 | 1RB#0 | 22.42 | 24.0 | PASS |
| Band17 | 5MHz | 16QAM | 23790 | 1RB#12 | 22.64 | 24.0 | PASS |
| Band17 | 5MHz | 16QAM | 23790 | 1RB#24 | 22.63 | 24.0 | PASS |
| Band17 | 5MHz | 16QAM | 23790 | 12RB#0 | 21.21 | 24.0 | PASS |
| Band17 | 5MHz | 16QAM | 23790 | 12RB#6 | 21.25 | 24.0 | PASS |
| Band17 | 5MHz | 16QAM | 23790 | 12RB#13 | 21.34 | 24.0 | PASS |
| Band17 | 5MHz | 16QAM | 23790 | 25RB#0 | 21.74 | 24.0 | PASS |
| Band17 | 5MHz | 16QAM | 23825 | 1RB#0 | 22.52 | 24.0 | PASS |
| Band17 | 5MHz | 16QAM | 23825 | 1RB#12 | 22.53 | 24.0 | PASS |
| Band17 | 5MHz | 16QAM | 23825 | 1RB#24 | 22.42 | 24.0 | PASS |
| Band17 | 5MHz | 16QAM | 23825 | 12RB#0 | 21.51 | 24.0 | PASS |
| Band17 | 5MHz | 16QAM | 23825 | 12RB#6 | 21.52 | 24.0 | PASS |
| Band17 | 5MHz | 16QAM | 23825 | 12RB#13 | 21.43 | 24.0 | PASS |
| Band17 | 5MHz | 16QAM | 23825 | 25RB#0 | 21.66 | 24.0 | PASS |
| Band17 | 10MHz | QPSK | 23780 | 1RB#0 | 23.44 | 24.0 | PASS |
| Band17 | 10MHz | QPSK | 23780 | 1RB#24 | 23.42 | 24.0 | PASS |
| Band17 | 10MHz | QPSK | 23780 | 1RB#49 | 23.36 | 24.0 | PASS |
| Band17 | 10MHz | QPSK | 23780 | 25RB#0 | 22.53 | 24.0 | PASS |
| Band17 | 10MHz | QPSK | 23780 | 25RB#12 | 22.62 | 24.0 | PASS |
| Band17 | 10MHz | QPSK | 23780 | 25RB#25 | 22.63 | 24.0 | PASS |
| Band17 | 10MHz | QPSK | 23780 | 50RB#0 | 22.54 | 24.0 | PASS |
| Band17 | 10MHz | QPSK | 23790 | 1RB#0 | 23.46 | 24.0 | PASS |
| Band17 | 10MHz | QPSK | 23790 | 1RB#24 | 23.79 | 24.0 | PASS |
| Band17 | 10MHz | QPSK | 23790 | 1RB#49 | 23.42 | 24.0 | PASS |
| Band17 | 10MHz | QPSK | 23790 | 25RB#0 | 22.53 | 24.0 | PASS |
| Band17 | 10MHz | QPSK | 23790 | 25RB#12 | 22.52 | 24.0 | PASS |
| Band17 | 10MHz | QPSK | 23790 | 25RB#25 | 22.61 | 24.0 | PASS |
| Band17 | 10MHz | QPSK | 23790 | 50RB#0 | 22.62 | 24.0 | PASS |

| | | | | | | | |
|--------|-------|-------|-------|---------|-------|------|------|
| Band17 | 10MHz | QPSK | 23800 | 1RB#0 | 23.53 | 24.0 | PASS |
| Band17 | 10MHz | QPSK | 23800 | 1RB#24 | 23.62 | 24.0 | PASS |
| Band17 | 10MHz | QPSK | 23800 | 1RB#49 | 23.54 | 24.0 | PASS |
| Band17 | 10MHz | QPSK | 23800 | 25RB#0 | 22.52 | 24.0 | PASS |
| Band17 | 10MHz | QPSK | 23800 | 25RB#12 | 22.53 | 24.0 | PASS |
| Band17 | 10MHz | QPSK | 23800 | 25RB#25 | 22.56 | 24.0 | PASS |
| Band17 | 10MHz | QPSK | 23800 | 50RB#0 | 22.54 | 24.0 | PASS |
| Band17 | 10MHz | 16QAM | 23780 | 1RB#0 | 22.76 | 24.0 | PASS |
| Band17 | 10MHz | 16QAM | 23780 | 1RB#24 | 22.78 | 24.0 | PASS |
| Band17 | 10MHz | 16QAM | 23780 | 1RB#49 | 22.61 | 24.0 | PASS |
| Band17 | 10MHz | 16QAM | 23780 | 25RB#0 | 21.62 | 24.0 | PASS |
| Band17 | 10MHz | 16QAM | 23780 | 25RB#12 | 21.66 | 24.0 | PASS |
| Band17 | 10MHz | 16QAM | 23780 | 25RB#25 | 21.75 | 24.0 | PASS |
| Band17 | 10MHz | 16QAM | 23780 | 50RB#0 | 21.72 | 24.0 | PASS |
| Band17 | 10MHz | 16QAM | 23790 | 1RB#0 | 22.61 | 24.0 | PASS |
| Band17 | 10MHz | 16QAM | 23790 | 1RB#24 | 22.82 | 24.0 | PASS |
| Band17 | 10MHz | 16QAM | 23790 | 1RB#49 | 22.63 | 24.0 | PASS |
| Band17 | 10MHz | 16QAM | 23790 | 25RB#0 | 21.64 | 24.0 | PASS |
| Band17 | 10MHz | 16QAM | 23790 | 25RB#12 | 21.62 | 24.0 | PASS |
| Band17 | 10MHz | 16QAM | 23790 | 25RB#25 | 21.76 | 24.0 | PASS |
| Band17 | 10MHz | 16QAM | 23790 | 50RB#0 | 21.75 | 24.0 | PASS |
| Band17 | 10MHz | 16QAM | 23800 | 1RB#0 | 22.41 | 24.0 | PASS |
| Band17 | 10MHz | 16QAM | 23800 | 1RB#24 | 22.52 | 24.0 | PASS |
| Band17 | 10MHz | 16QAM | 23800 | 1RB#49 | 22.43 | 24.0 | PASS |
| Band17 | 10MHz | 16QAM | 23800 | 25RB#0 | 21.61 | 24.0 | PASS |
| Band17 | 10MHz | 16QAM | 23800 | 25RB#12 | 21.62 | 24.0 | PASS |
| Band17 | 10MHz | 16QAM | 23800 | 25RB#25 | 21.63 | 24.0 | PASS |
| Band17 | 10MHz | 16QAM | 23800 | 50RB#0 | 21.64 | 24.0 | PASS |

| Band | Bandwidth | Modulation | Channel | RB Configuration | Result(dBm) | Tune-up power (dBm) | Verdict |
|--------|-----------|------------|---------|------------------|-------------|---------------------|---------|
| Band38 | 5MHz | QPSK | 37775 | 1RB#0 | 23.81 | 24.5 | PASS |
| Band38 | 5MHz | QPSK | 37775 | 1RB#12 | 24.02 | 24.5 | PASS |
| Band38 | 5MHz | QPSK | 37775 | 1RB#24 | 23.83 | 24.5 | PASS |
| Band38 | 5MHz | QPSK | 37775 | 12RB#0 | 22.86 | 24.5 | PASS |
| Band38 | 5MHz | QPSK | 37775 | 12RB#6 | 22.84 | 24.5 | PASS |

| | | | | | | | |
|--------|------|-------|-------|---------|-------|------|------|
| Band38 | 5MHz | QPSK | 37775 | 12RB#13 | 22.82 | 24.5 | PASS |
| Band38 | 5MHz | QPSK | 37775 | 25RB#0 | 22.86 | 24.5 | PASS |
| Band38 | 5MHz | QPSK | 38000 | 1RB#0 | 23.95 | 24.5 | PASS |
| Band38 | 5MHz | QPSK | 38000 | 1RB#12 | 24.16 | 24.5 | PASS |
| Band38 | 5MHz | QPSK | 38000 | 1RB#24 | 23.97 | 24.5 | PASS |
| Band38 | 5MHz | QPSK | 38000 | 12RB#0 | 23.05 | 24.5 | PASS |
| Band38 | 5MHz | QPSK | 38000 | 12RB#6 | 23.06 | 24.5 | PASS |
| Band38 | 5MHz | QPSK | 38000 | 12RB#13 | 22.91 | 24.5 | PASS |
| Band38 | 5MHz | QPSK | 38000 | 25RB#0 | 23.02 | 24.5 | PASS |
| Band38 | 5MHz | QPSK | 38225 | 1RB#0 | 23.83 | 24.5 | PASS |
| Band38 | 5MHz | QPSK | 38225 | 1RB#12 | 24.06 | 24.5 | PASS |
| Band38 | 5MHz | QPSK | 38225 | 1RB#24 | 23.84 | 24.5 | PASS |
| Band38 | 5MHz | QPSK | 38225 | 12RB#0 | 22.98 | 24.5 | PASS |
| Band38 | 5MHz | QPSK | 38225 | 12RB#6 | 22.91 | 24.5 | PASS |
| Band38 | 5MHz | QPSK | 38225 | 12RB#13 | 22.92 | 24.5 | PASS |
| Band38 | 5MHz | QPSK | 38225 | 25RB#0 | 22.93 | 24.5 | PASS |
| Band38 | 5MHz | 16QAM | 37775 | 1RB#0 | 23.06 | 24.5 | PASS |
| Band38 | 5MHz | 16QAM | 37775 | 1RB#12 | 23.17 | 24.5 | PASS |
| Band38 | 5MHz | 16QAM | 37775 | 1RB#24 | 23.05 | 24.5 | PASS |
| Band38 | 5MHz | 16QAM | 37775 | 12RB#0 | 21.86 | 24.5 | PASS |
| Band38 | 5MHz | 16QAM | 37775 | 12RB#6 | 21.84 | 24.5 | PASS |
| Band38 | 5MHz | 16QAM | 37775 | 12RB#13 | 21.81 | 24.5 | PASS |
| Band38 | 5MHz | 16QAM | 37775 | 25RB#0 | 21.80 | 24.5 | PASS |
| Band38 | 5MHz | 16QAM | 38000 | 1RB#0 | 22.93 | 24.5 | PASS |
| Band38 | 5MHz | 16QAM | 38000 | 1RB#12 | 23.11 | 24.5 | PASS |
| Band38 | 5MHz | 16QAM | 38000 | 1RB#24 | 22.91 | 24.5 | PASS |
| Band38 | 5MHz | 16QAM | 38000 | 12RB#0 | 21.92 | 24.5 | PASS |
| Band38 | 5MHz | 16QAM | 38000 | 12RB#6 | 22.03 | 24.5 | PASS |
| Band38 | 5MHz | 16QAM | 38000 | 12RB#13 | 22.02 | 24.5 | PASS |
| Band38 | 5MHz | 16QAM | 38000 | 25RB#0 | 22.05 | 24.5 | PASS |
| Band38 | 5MHz | 16QAM | 38225 | 1RB#0 | 22.96 | 24.5 | PASS |
| Band38 | 5MHz | 16QAM | 38225 | 1RB#12 | 23.01 | 24.5 | PASS |
| Band38 | 5MHz | 16QAM | 38225 | 1RB#24 | 22.92 | 24.5 | PASS |
| Band38 | 5MHz | 16QAM | 38225 | 12RB#0 | 22.03 | 24.5 | PASS |
| Band38 | 5MHz | 16QAM | 38225 | 12RB#6 | 22.05 | 24.5 | PASS |
| Band38 | 5MHz | 16QAM | 38225 | 12RB#13 | 21.91 | 24.5 | PASS |
| Band38 | 5MHz | 16QAM | 38225 | 25RB#0 | 22.02 | 24.5 | PASS |

| | | | | | | | |
|--------|-------|-------|-------|---------|-------|------|------|
| Band38 | 10MHz | QPSK | 37800 | 1RB#0 | 24.03 | 24.5 | PASS |
| Band38 | 10MHz | QPSK | 37800 | 1RB#24 | 24.36 | 24.5 | PASS |
| Band38 | 10MHz | QPSK | 37800 | 1RB#49 | 24.11 | 24.5 | PASS |
| Band38 | 10MHz | QPSK | 37800 | 25RB#0 | 22.92 | 24.5 | PASS |
| Band38 | 10MHz | QPSK | 37800 | 25RB#12 | 23.03 | 24.5 | PASS |
| Band38 | 10MHz | QPSK | 37800 | 25RB#25 | 22.95 | 24.5 | PASS |
| Band38 | 10MHz | QPSK | 37800 | 50RB#0 | 22.96 | 24.5 | PASS |
| Band38 | 10MHz | QPSK | 38000 | 1RB#0 | 24.21 | 24.5 | PASS |
| Band38 | 10MHz | QPSK | 38000 | 1RB#24 | 24.42 | 24.5 | PASS |
| Band38 | 10MHz | QPSK | 38000 | 1RB#49 | 24.03 | 24.5 | PASS |
| Band38 | 10MHz | QPSK | 38000 | 25RB#0 | 23.15 | 24.5 | PASS |
| Band38 | 10MHz | QPSK | 38000 | 25RB#12 | 23.17 | 24.5 | PASS |
| Band38 | 10MHz | QPSK | 38000 | 25RB#25 | 23.05 | 24.5 | PASS |
| Band38 | 10MHz | QPSK | 38000 | 50RB#0 | 23.03 | 24.5 | PASS |
| Band38 | 10MHz | QPSK | 38200 | 1RB#0 | 24.06 | 24.5 | PASS |
| Band38 | 10MHz | QPSK | 38200 | 1RB#24 | 24.21 | 24.5 | PASS |
| Band38 | 10MHz | QPSK | 38200 | 1RB#49 | 23.92 | 24.5 | PASS |
| Band38 | 10MHz | QPSK | 38200 | 25RB#0 | 23.13 | 24.5 | PASS |
| Band38 | 10MHz | QPSK | 38200 | 25RB#12 | 23.05 | 24.5 | PASS |
| Band38 | 10MHz | QPSK | 38200 | 25RB#25 | 23.06 | 24.5 | PASS |
| Band38 | 10MHz | QPSK | 38200 | 50RB#0 | 23.11 | 24.5 | PASS |
| Band38 | 10MHz | 16QAM | 37800 | 1RB#0 | 23.02 | 24.5 | PASS |
| Band38 | 10MHz | 16QAM | 37800 | 1RB#24 | 23.23 | 24.5 | PASS |
| Band38 | 10MHz | 16QAM | 37800 | 1RB#49 | 23.06 | 24.5 | PASS |
| Band38 | 10MHz | 16QAM | 37800 | 25RB#0 | 22.04 | 24.5 | PASS |
| Band38 | 10MHz | 16QAM | 37800 | 25RB#12 | 22.05 | 24.5 | PASS |
| Band38 | 10MHz | 16QAM | 37800 | 25RB#25 | 22.04 | 24.5 | PASS |
| Band38 | 10MHz | 16QAM | 37800 | 50RB#0 | 21.95 | 24.5 | PASS |
| Band38 | 10MHz | 16QAM | 38000 | 1RB#0 | 22.76 | 24.5 | PASS |
| Band38 | 10MHz | 16QAM | 38000 | 1RB#24 | 22.93 | 24.5 | PASS |
| Band38 | 10MHz | 16QAM | 38000 | 1RB#49 | 22.64 | 24.5 | PASS |
| Band38 | 10MHz | 16QAM | 38000 | 25RB#0 | 22.02 | 24.5 | PASS |
| Band38 | 10MHz | 16QAM | 38000 | 25RB#12 | 22.03 | 24.5 | PASS |
| Band38 | 10MHz | 16QAM | 38000 | 25RB#25 | 22.01 | 24.5 | PASS |
| Band38 | 10MHz | 16QAM | 38000 | 50RB#0 | 22.02 | 24.5 | PASS |
| Band38 | 10MHz | 16QAM | 38200 | 1RB#0 | 22.93 | 24.5 | PASS |
| Band38 | 10MHz | 16QAM | 38200 | 1RB#24 | 23.14 | 24.5 | PASS |

| | | | | | | | |
|--------|-------|-------|-------|---------|-------|------|------|
| Band38 | 10MHz | 16QAM | 38200 | 1RB#49 | 22.82 | 24.5 | PASS |
| Band38 | 10MHz | 16QAM | 38200 | 25RB#0 | 22.13 | 24.5 | PASS |
| Band38 | 10MHz | 16QAM | 38200 | 25RB#12 | 22.16 | 24.5 | PASS |
| Band38 | 10MHz | 16QAM | 38200 | 25RB#25 | 22.14 | 24.5 | PASS |
| Band38 | 10MHz | 16QAM | 38200 | 50RB#0 | 22.12 | 24.5 | PASS |
| Band38 | 15MHz | QPSK | 37825 | 1RB#0 | 24.03 | 24.5 | PASS |
| Band38 | 15MHz | QPSK | 37825 | 1RB#38 | 24.14 | 24.5 | PASS |
| Band38 | 15MHz | QPSK | 37825 | 1RB#74 | 24.15 | 24.5 | PASS |
| Band38 | 15MHz | QPSK | 37825 | 38RB#0 | 23.13 | 24.5 | PASS |
| Band38 | 15MHz | QPSK | 37825 | 38RB#18 | 23.16 | 24.5 | PASS |
| Band38 | 15MHz | QPSK | 37825 | 38RB#37 | 23.14 | 24.5 | PASS |
| Band38 | 15MHz | QPSK | 37825 | 75RB#0 | 23.16 | 24.5 | PASS |
| Band38 | 15MHz | QPSK | 38000 | 1RB#0 | 24.24 | 24.5 | PASS |
| Band38 | 15MHz | QPSK | 38000 | 1RB#38 | 24.32 | 24.5 | PASS |
| Band38 | 15MHz | QPSK | 38000 | 1RB#74 | 24.03 | 24.5 | PASS |
| Band38 | 15MHz | QPSK | 38000 | 38RB#0 | 23.15 | 24.5 | PASS |
| Band38 | 15MHz | QPSK | 38000 | 38RB#18 | 23.26 | 24.5 | PASS |
| Band38 | 15MHz | QPSK | 38000 | 38RB#37 | 23.14 | 24.5 | PASS |
| Band38 | 15MHz | QPSK | 38000 | 75RB#0 | 23.12 | 24.5 | PASS |
| Band38 | 15MHz | QPSK | 38175 | 1RB#0 | 24.00 | 24.5 | PASS |
| Band38 | 15MHz | QPSK | 38175 | 1RB#38 | 24.01 | 24.5 | PASS |
| Band38 | 15MHz | QPSK | 38175 | 1RB#74 | 23.82 | 24.5 | PASS |
| Band38 | 15MHz | QPSK | 38175 | 38RB#0 | 23.03 | 24.5 | PASS |
| Band38 | 15MHz | QPSK | 38175 | 38RB#18 | 23.02 | 24.5 | PASS |
| Band38 | 15MHz | QPSK | 38175 | 38RB#37 | 23.03 | 24.5 | PASS |
| Band38 | 15MHz | QPSK | 38175 | 75RB#0 | 23.08 | 24.5 | PASS |
| Band38 | 15MHz | 16QAM | 37825 | 1RB#0 | 23.01 | 24.5 | PASS |
| Band38 | 15MHz | 16QAM | 37825 | 1RB#38 | 23.08 | 24.5 | PASS |
| Band38 | 15MHz | 16QAM | 37825 | 1RB#74 | 22.99 | 24.5 | PASS |
| Band38 | 15MHz | 16QAM | 37825 | 38RB#0 | 23.13 | 24.5 | PASS |
| Band38 | 15MHz | 16QAM | 37825 | 38RB#18 | 23.12 | 24.5 | PASS |
| Band38 | 15MHz | 16QAM | 37825 | 38RB#37 | 23.11 | 24.5 | PASS |
| Band38 | 15MHz | 16QAM | 37825 | 75RB#0 | 22.04 | 24.5 | PASS |
| Band38 | 15MHz | 16QAM | 38000 | 1RB#0 | 22.88 | 24.5 | PASS |
| Band38 | 15MHz | 16QAM | 38000 | 1RB#38 | 22.90 | 24.5 | PASS |
| Band38 | 15MHz | 16QAM | 38000 | 1RB#74 | 22.76 | 24.5 | PASS |
| Band38 | 15MHz | 16QAM | 38000 | 38RB#0 | 23.22 | 24.5 | PASS |

| | | | | | | | |
|--------|-------|-------|-------|---------|--------------|------|------|
| Band38 | 15MHz | 16QAM | 38000 | 38RB#18 | 23.19 | 24.5 | PASS |
| Band38 | 15MHz | 16QAM | 38000 | 38RB#37 | 23.18 | 24.5 | PASS |
| Band38 | 15MHz | 16QAM | 38000 | 75RB#0 | 22.12 | 24.5 | PASS |
| Band38 | 15MHz | 16QAM | 38175 | 1RB#0 | 22.97 | 24.5 | PASS |
| Band38 | 15MHz | 16QAM | 38175 | 1RB#38 | 22.99 | 24.5 | PASS |
| Band38 | 15MHz | 16QAM | 38175 | 1RB#74 | 22.80 | 24.5 | PASS |
| Band38 | 15MHz | 16QAM | 38175 | 38RB#0 | 23.11 | 24.5 | PASS |
| Band38 | 15MHz | 16QAM | 38175 | 38RB#18 | 23.13 | 24.5 | PASS |
| Band38 | 15MHz | 16QAM | 38175 | 38RB#37 | 23.09 | 24.5 | PASS |
| Band38 | 15MHz | 16QAM | 38175 | 75RB#0 | 22.09 | 24.5 | PASS |
| Band38 | 20MHz | QPSK | 37850 | 1RB#0 | 24.04 | 24.5 | PASS |
| Band38 | 20MHz | QPSK | 37850 | 1RB#49 | 24.47 | 24.5 | PASS |
| Band38 | 20MHz | QPSK | 37850 | 1RB#99 | 24.18 | 24.5 | PASS |
| Band38 | 20MHz | QPSK | 37850 | 50RB#0 | 23.00 | 24.5 | PASS |
| Band38 | 20MHz | QPSK | 37850 | 50RB#25 | 22.97 | 24.5 | PASS |
| Band38 | 20MHz | QPSK | 37850 | 50RB#50 | 22.90 | 24.5 | PASS |
| Band38 | 20MHz | QPSK | 37850 | 100RB#0 | 22.95 | 24.5 | PASS |
| Band38 | 20MHz | QPSK | 38000 | 1RB#0 | 24.14 | 24.5 | PASS |
| Band38 | 20MHz | QPSK | 38000 | 1RB#49 | 24.38 | 24.5 | PASS |
| Band38 | 20MHz | QPSK | 38000 | 1RB#99 | 23.96 | 24.5 | PASS |
| Band38 | 20MHz | QPSK | 38000 | 50RB#0 | 23.11 | 24.5 | PASS |
| Band38 | 20MHz | QPSK | 38000 | 50RB#25 | 23.07 | 24.5 | PASS |
| Band38 | 20MHz | QPSK | 38000 | 50RB#50 | 22.97 | 24.5 | PASS |
| Band38 | 20MHz | QPSK | 38000 | 100RB#0 | 23.07 | 24.5 | PASS |
| Band38 | 20MHz | QPSK | 38150 | 1RB#0 | 23.95 | 24.5 | PASS |
| Band38 | 20MHz | QPSK | 38150 | 1RB#49 | 24.11 | 24.5 | PASS |
| Band38 | 20MHz | QPSK | 38150 | 1RB#99 | 23.71 | 24.5 | PASS |
| Band38 | 20MHz | QPSK | 38150 | 50RB#0 | 23.13 | 24.5 | PASS |
| Band38 | 20MHz | QPSK | 38150 | 50RB#25 | 23.08 | 24.5 | PASS |
| Band38 | 20MHz | QPSK | 38150 | 50RB#50 | 22.98 | 24.5 | PASS |
| Band38 | 20MHz | QPSK | 38150 | 100RB#0 | 23.08 | 24.5 | PASS |
| Band38 | 20MHz | 16QAM | 37850 | 1RB#0 | 22.54 | 24.5 | PASS |
| Band38 | 20MHz | 16QAM | 37850 | 1RB#49 | 22.85 | 24.5 | PASS |
| Band38 | 20MHz | 16QAM | 37850 | 1RB#99 | 22.65 | 24.5 | PASS |
| Band38 | 20MHz | 16QAM | 37850 | 50RB#0 | 21.94 | 24.5 | PASS |
| Band38 | 20MHz | 16QAM | 37850 | 50RB#25 | 21.92 | 24.5 | PASS |
| Band38 | 20MHz | 16QAM | 37850 | 50RB#50 | 21.82 | 24.5 | PASS |

| | | | | | | | |
|--------|-------|-------|-------|---------|-------|------|------|
| Band38 | 20MHz | 16QAM | 37850 | 100RB#0 | 21.96 | 24.5 | PASS |
| Band38 | 20MHz | 16QAM | 38000 | 1RB#0 | 23.00 | 24.5 | PASS |
| Band38 | 20MHz | 16QAM | 38000 | 1RB#49 | 23.25 | 24.5 | PASS |
| Band38 | 20MHz | 16QAM | 38000 | 1RB#99 | 22.93 | 24.5 | PASS |
| Band38 | 20MHz | 16QAM | 38000 | 50RB#0 | 22.07 | 24.5 | PASS |
| Band38 | 20MHz | 16QAM | 38000 | 50RB#25 | 22.10 | 24.5 | PASS |
| Band38 | 20MHz | 16QAM | 38000 | 50RB#50 | 22.00 | 24.5 | PASS |
| Band38 | 20MHz | 16QAM | 38000 | 100RB#0 | 22.02 | 24.5 | PASS |
| Band38 | 20MHz | 16QAM | 38150 | 1RB#0 | 22.52 | 24.5 | PASS |
| Band38 | 20MHz | 16QAM | 38150 | 1RB#49 | 22.66 | 24.5 | PASS |
| Band38 | 20MHz | 16QAM | 38150 | 1RB#99 | 22.30 | 24.5 | PASS |
| Band38 | 20MHz | 16QAM | 38150 | 50RB#0 | 22.19 | 24.5 | PASS |
| Band38 | 20MHz | 16QAM | 38150 | 50RB#25 | 22.17 | 24.5 | PASS |
| Band38 | 20MHz | 16QAM | 38150 | 50RB#50 | 22.13 | 24.5 | PASS |
| Band38 | 20MHz | 16QAM | 38150 | 100RB#0 | 22.18 | 24.5 | PASS |

Band 40(2305-2315MHz)

| Band | Bandwidth | Modulation | Channel | RB Configuration | Result(dBm) | Tune-up power (dBm) | Verdict |
|--------|-----------|------------|---------|------------------|-------------|---------------------|---------|
| Band40 | 5MHz | QPSK | 38725 | 1RB#0 | 23.31 | 24.0 | PASS |
| Band40 | 5MHz | QPSK | 38725 | 1RB#12 | 23.42 | 24.0 | PASS |
| Band40 | 5MHz | QPSK | 38725 | 1RB#24 | 23.33 | 24.0 | PASS |
| Band40 | 5MHz | QPSK | 38725 | 12RB#0 | 22.35 | 24.0 | PASS |
| Band40 | 5MHz | QPSK | 38725 | 12RB#6 | 22.34 | 24.0 | PASS |
| Band40 | 5MHz | QPSK | 38725 | 12RB#13 | 22.22 | 24.0 | PASS |
| Band40 | 5MHz | QPSK | 38725 | 25RB#0 | 22.22 | 24.0 | PASS |
| Band40 | 5MHz | QPSK | 38750 | 1RB#0 | 23.16 | 24.0 | PASS |
| Band40 | 5MHz | QPSK | 38750 | 1RB#12 | 23.35 | 24.0 | PASS |
| Band40 | 5MHz | QPSK | 38750 | 1RB#24 | 23.16 | 24.0 | PASS |
| Band40 | 5MHz | QPSK | 38750 | 12RB#0 | 22.31 | 24.0 | PASS |
| Band40 | 5MHz | QPSK | 38750 | 12RB#6 | 22.35 | 24.0 | PASS |
| Band40 | 5MHz | QPSK | 38750 | 12RB#13 | 22.26 | 24.0 | PASS |
| Band40 | 5MHz | QPSK | 38750 | 25RB#0 | 22.22 | 24.0 | PASS |
| Band40 | 5MHz | QPSK | 38775 | 1RB#0 | 23.43 | 24.0 | PASS |
| Band40 | 5MHz | QPSK | 38775 | 1RB#12 | 23.44 | 24.0 | PASS |
| Band40 | 5MHz | QPSK | 38775 | 1RB#24 | 23.35 | 24.0 | PASS |
| Band40 | 5MHz | QPSK | 38775 | 12RB#0 | 22.36 | 24.0 | PASS |
| Band40 | 5MHz | QPSK | 38775 | 12RB#6 | 22.37 | 24.0 | PASS |
| Band40 | 5MHz | QPSK | 38775 | 12RB#13 | 22.25 | 24.0 | PASS |
| Band40 | 5MHz | QPSK | 38775 | 25RB#0 | 22.22 | 24.0 | PASS |
| Band40 | 5MHz | 16QAM | 38725 | 1RB#0 | 22.53 | 24.0 | PASS |
| Band40 | 5MHz | 16QAM | 38725 | 1RB#12 | 22.66 | 24.0 | PASS |
| Band40 | 5MHz | 16QAM | 38725 | 1RB#24 | 22.54 | 24.0 | PASS |
| Band40 | 5MHz | 16QAM | 38725 | 12RB#0 | 21.25 | 24.0 | PASS |
| Band40 | 5MHz | 16QAM | 38725 | 12RB#6 | 21.26 | 24.0 | PASS |
| Band40 | 5MHz | 16QAM | 38725 | 12RB#13 | 21.17 | 24.0 | PASS |
| Band40 | 5MHz | 16QAM | 38725 | 25RB#0 | 21.21 | 24.0 | PASS |
| Band40 | 5MHz | 16QAM | 38750 | 1RB#0 | 22.40 | 24.0 | PASS |
| Band40 | 5MHz | 16QAM | 38750 | 1RB#12 | 22.62 | 24.0 | PASS |
| Band40 | 5MHz | 16QAM | 38750 | 1RB#24 | 22.43 | 24.0 | PASS |
| Band40 | 5MHz | 16QAM | 38750 | 12RB#0 | 21.24 | 24.0 | PASS |
| Band40 | 5MHz | 16QAM | 38750 | 12RB#6 | 21.22 | 24.0 | PASS |

| | | | | | | | |
|--------|-------|-------|-------|---------|--------------|------|------|
| Band40 | 5MHz | 16QAM | 38750 | 12RB#13 | 21.23 | 24.0 | PASS |
| Band40 | 5MHz | 16QAM | 38750 | 25RB#0 | 21.24 | 24.0 | PASS |
| Band40 | 5MHz | 16QAM | 38775 | 1RB#0 | 22.35 | 24.0 | PASS |
| Band40 | 5MHz | 16QAM | 38775 | 1RB#12 | 22.42 | 24.0 | PASS |
| Band40 | 5MHz | 16QAM | 38775 | 1RB#24 | 22.33 | 24.0 | PASS |
| Band40 | 5MHz | 16QAM | 38775 | 12RB#0 | 21.26 | 24.0 | PASS |
| Band40 | 5MHz | 16QAM | 38775 | 12RB#6 | 21.27 | 24.0 | PASS |
| Band40 | 5MHz | 16QAM | 38775 | 12RB#13 | 21.18 | 24.0 | PASS |
| Band40 | 5MHz | 16QAM | 38775 | 25RB#0 | 21.26 | 24.0 | PASS |
| Band40 | 10MHz | QPSK | 38750 | 1RB#0 | 23.43 | 24.0 | PASS |
| Band40 | 10MHz | QPSK | 38750 | 1RB#24 | 23.51 | 24.0 | PASS |
| Band40 | 10MHz | QPSK | 38750 | 1RB#49 | 23.32 | 24.0 | PASS |
| Band40 | 10MHz | QPSK | 38750 | 25RB#0 | 22.31 | 24.0 | PASS |
| Band40 | 10MHz | QPSK | 38750 | 25RB#12 | 22.32 | 24.0 | PASS |
| Band40 | 10MHz | QPSK | 38750 | 25RB#25 | 22.23 | 24.0 | PASS |
| Band40 | 10MHz | QPSK | 38750 | 50RB#0 | 22.31 | 24.0 | PASS |
| Band40 | 10MHz | 16QAM | 38750 | 1RB#0 | 22.42 | 24.0 | PASS |
| Band40 | 10MHz | 16QAM | 38750 | 1RB#24 | 22.63 | 24.0 | PASS |
| Band40 | 10MHz | 16QAM | 38750 | 1RB#49 | 22.42 | 24.0 | PASS |
| Band40 | 10MHz | 16QAM | 38750 | 25RB#0 | 21.43 | 24.0 | PASS |
| Band40 | 10MHz | 16QAM | 38750 | 25RB#12 | 21.31 | 24.0 | PASS |
| Band40 | 10MHz | 16QAM | 38750 | 25RB#25 | 21.22 | 24.0 | PASS |
| Band40 | 10MHz | 16QAM | 38750 | 50RB#0 | 21.23 | 24.0 | PASS |

Band 40(2350-2360MHz)

| Band | Bandwidth | Modulation | Channel | RB Configuration | Result(dBm) | Tune-up power (dBm) | Verdict |
|--------|-----------|------------|---------|------------------|-------------|---------------------|---------|
| Band40 | 5MHz | QPSK | 39175 | 1RB#0 | 22.71 | 23.5 | PASS |
| Band40 | 5MHz | QPSK | 39175 | 1RB#12 | 22.81 | 23.5 | PASS |
| Band40 | 5MHz | QPSK | 39175 | 1RB#24 | 22.61 | 23.5 | PASS |
| Band40 | 5MHz | QPSK | 39175 | 12RB#0 | 21.80 | 23.5 | PASS |
| Band40 | 5MHz | QPSK | 39175 | 12RB#6 | 21.72 | 23.5 | PASS |
| Band40 | 5MHz | QPSK | 39175 | 12RB#13 | 21.83 | 23.5 | PASS |
| Band40 | 5MHz | QPSK | 39175 | 25RB#0 | 21.81 | 23.5 | PASS |

| | | | | | | | |
|--------|-------|-------|-------|---------|--------------|------|------|
| Band40 | 5MHz | QPSK | 39200 | 1RB#0 | 22.82 | 23.5 | PASS |
| Band40 | 5MHz | QPSK | 39200 | 1RB#12 | 22.93 | 23.5 | PASS |
| Band40 | 5MHz | QPSK | 39200 | 1RB#24 | 22.71 | 23.5 | PASS |
| Band40 | 5MHz | QPSK | 39200 | 12RB#0 | 21.82 | 23.5 | PASS |
| Band40 | 5MHz | QPSK | 39200 | 12RB#6 | 21.73 | 23.5 | PASS |
| Band40 | 5MHz | QPSK | 39200 | 12RB#13 | 21.85 | 23.5 | PASS |
| Band40 | 5MHz | QPSK | 39200 | 25RB#0 | 21.82 | 23.5 | PASS |
| Band40 | 5MHz | QPSK | 39225 | 1RB#0 | 22.73 | 23.5 | PASS |
| Band40 | 5MHz | QPSK | 39225 | 1RB#12 | 22.81 | 23.5 | PASS |
| Band40 | 5MHz | QPSK | 39225 | 1RB#24 | 22.72 | 23.5 | PASS |
| Band40 | 5MHz | QPSK | 39225 | 12RB#0 | 21.73 | 23.5 | PASS |
| Band40 | 5MHz | QPSK | 39225 | 12RB#6 | 21.75 | 23.5 | PASS |
| Band40 | 5MHz | QPSK | 39225 | 12RB#13 | 21.74 | 23.5 | PASS |
| Band40 | 5MHz | QPSK | 39225 | 25RB#0 | 21.71 | 23.5 | PASS |
| Band40 | 5MHz | 16QAM | 39175 | 1RB#0 | 22.02 | 23.5 | PASS |
| Band40 | 5MHz | 16QAM | 39175 | 1RB#12 | 22.13 | 23.5 | PASS |
| Band40 | 5MHz | 16QAM | 39175 | 1RB#24 | 22.06 | 23.5 | PASS |
| Band40 | 5MHz | 16QAM | 39175 | 12RB#0 | 20.71 | 23.5 | PASS |
| Band40 | 5MHz | 16QAM | 39175 | 12RB#6 | 20.72 | 23.5 | PASS |
| Band40 | 5MHz | 16QAM | 39175 | 12RB#13 | 20.83 | 23.5 | PASS |
| Band40 | 5MHz | 16QAM | 39175 | 25RB#0 | 20.86 | 23.5 | PASS |
| Band40 | 5MHz | 16QAM | 39200 | 1RB#0 | 21.91 | 23.5 | PASS |
| Band40 | 5MHz | 16QAM | 39200 | 1RB#12 | 22.02 | 23.5 | PASS |
| Band40 | 5MHz | 16QAM | 39200 | 1RB#24 | 21.83 | 23.5 | PASS |
| Band40 | 5MHz | 16QAM | 39200 | 12RB#0 | 20.71 | 23.5 | PASS |
| Band40 | 5MHz | 16QAM | 39200 | 12RB#6 | 20.74 | 23.5 | PASS |
| Band40 | 5MHz | 16QAM | 39200 | 12RB#13 | 20.72 | 23.5 | PASS |
| Band40 | 5MHz | 16QAM | 39200 | 25RB#0 | 20.73 | 23.5 | PASS |
| Band40 | 5MHz | 16QAM | 39225 | 1RB#0 | 22.04 | 23.5 | PASS |
| Band40 | 5MHz | 16QAM | 39225 | 1RB#12 | 22.12 | 23.5 | PASS |
| Band40 | 5MHz | 16QAM | 39225 | 1RB#24 | 22.03 | 23.5 | PASS |
| Band40 | 5MHz | 16QAM | 39225 | 12RB#0 | 20.76 | 23.5 | PASS |
| Band40 | 5MHz | 16QAM | 39225 | 12RB#6 | 20.64 | 23.5 | PASS |
| Band40 | 5MHz | 16QAM | 39225 | 12RB#13 | 20.61 | 23.5 | PASS |
| Band40 | 5MHz | 16QAM | 39225 | 25RB#0 | 20.72 | 23.5 | PASS |
| Band40 | 10MHz | QPSK | 39200 | 1RB#0 | 22.93 | 23.5 | PASS |
| Band40 | 10MHz | QPSK | 39200 | 1RB#24 | 23.06 | 23.5 | PASS |

| | | | | | | | |
|--------|-------|-------|-------|---------|-------|------|------|
| Band40 | 10MHz | QPSK | 39200 | 1RB#49 | 22.75 | 23.5 | PASS |
| Band40 | 10MHz | QPSK | 39200 | 25RB#0 | 21.82 | 23.5 | PASS |
| Band40 | 10MHz | QPSK | 39200 | 25RB#12 | 21.83 | 23.5 | PASS |
| Band40 | 10MHz | QPSK | 39200 | 25RB#25 | 21.81 | 23.5 | PASS |
| Band40 | 10MHz | QPSK | 39200 | 50RB#0 | 21.82 | 23.5 | PASS |
| Band40 | 10MHz | 16QAM | 39200 | 1RB#0 | 22.13 | 23.5 | PASS |
| Band40 | 10MHz | 16QAM | 39200 | 1RB#24 | 22.22 | 23.5 | PASS |
| Band40 | 10MHz | 16QAM | 39200 | 1RB#49 | 21.91 | 23.5 | PASS |
| Band40 | 10MHz | 16QAM | 39200 | 25RB#0 | 20.82 | 23.5 | PASS |
| Band40 | 10MHz | 16QAM | 39200 | 25RB#12 | 20.83 | 23.5 | PASS |
| Band40 | 10MHz | 16QAM | 39200 | 25RB#25 | 20.91 | 23.5 | PASS |
| Band40 | 10MHz | 16QAM | 39200 | 50RB#0 | 20.82 | 23.5 | PASS |

| Band | Bandwidth | Modulation | Channel | RB Configuration | Result(dBm) | Tune-up power (dBm) | Verdict |
|--------|-----------|------------|---------|------------------|-------------|---------------------|---------|
| Band66 | 1.4MHz | QPSK | 131979 | 1RB#0 | 23.36 | 24.0 | PASS |
| Band66 | 1.4MHz | QPSK | 131979 | 1RB#2 | 23.51 | 24.0 | PASS |
| Band66 | 1.4MHz | QPSK | 131979 | 1RB#5 | 23.32 | 24.0 | PASS |
| Band66 | 1.4MHz | QPSK | 131979 | 3RB#0 | 23.43 | 24.0 | PASS |
| Band66 | 1.4MHz | QPSK | 131979 | 3RB#1 | 23.41 | 24.0 | PASS |
| Band66 | 1.4MHz | QPSK | 131979 | 3RB#3 | 23.52 | 24.0 | PASS |
| Band66 | 1.4MHz | QPSK | 131979 | 6RB#0 | 22.51 | 24.0 | PASS |
| Band66 | 1.4MHz | QPSK | 132322 | 1RB#0 | 23.30 | 24.0 | PASS |
| Band66 | 1.4MHz | QPSK | 132322 | 1RB#2 | 23.41 | 24.0 | PASS |
| Band66 | 1.4MHz | QPSK | 132322 | 1RB#5 | 23.32 | 24.0 | PASS |
| Band66 | 1.4MHz | QPSK | 132322 | 3RB#0 | 23.31 | 24.0 | PASS |
| Band66 | 1.4MHz | QPSK | 132322 | 3RB#1 | 23.33 | 24.0 | PASS |
| Band66 | 1.4MHz | QPSK | 132322 | 3RB#3 | 23.21 | 24.0 | PASS |
| Band66 | 1.4MHz | QPSK | 132322 | 6RB#0 | 22.42 | 24.0 | PASS |
| Band66 | 1.4MHz | QPSK | 132665 | 1RB#0 | 23.43 | 24.0 | PASS |
| Band66 | 1.4MHz | QPSK | 132665 | 1RB#2 | 23.51 | 24.0 | PASS |
| Band66 | 1.4MHz | QPSK | 132665 | 1RB#5 | 23.42 | 24.0 | PASS |
| Band66 | 1.4MHz | QPSK | 132665 | 3RB#0 | 23.23 | 24.0 | PASS |
| Band66 | 1.4MHz | QPSK | 132665 | 3RB#1 | 23.24 | 24.0 | PASS |
| Band66 | 1.4MHz | QPSK | 132665 | 3RB#3 | 23.22 | 24.0 | PASS |
| Band66 | 1.4MHz | QPSK | 132665 | 6RB#0 | 22.53 | 24.0 | PASS |

| | | | | | | | |
|--------|--------|-------|--------|--------|-------|------|------|
| Band66 | 1.4MHz | 16QAM | 131979 | 1RB#0 | 22.51 | 24.0 | PASS |
| Band66 | 1.4MHz | 16QAM | 131979 | 1RB#2 | 22.72 | 24.0 | PASS |
| Band66 | 1.4MHz | 16QAM | 131979 | 1RB#5 | 22.42 | 24.0 | PASS |
| Band66 | 1.4MHz | 16QAM | 131979 | 3RB#0 | 22.33 | 24.0 | PASS |
| Band66 | 1.4MHz | 16QAM | 131979 | 3RB#1 | 22.31 | 24.0 | PASS |
| Band66 | 1.4MHz | 16QAM | 131979 | 3RB#3 | 22.32 | 24.0 | PASS |
| Band66 | 1.4MHz | 16QAM | 131979 | 6RB#0 | 21.33 | 24.0 | PASS |
| Band66 | 1.4MHz | 16QAM | 132322 | 1RB#0 | 22.14 | 24.0 | PASS |
| Band66 | 1.4MHz | 16QAM | 132322 | 1RB#2 | 22.32 | 24.0 | PASS |
| Band66 | 1.4MHz | 16QAM | 132322 | 1RB#5 | 22.12 | 24.0 | PASS |
| Band66 | 1.4MHz | 16QAM | 132322 | 3RB#0 | 22.03 | 24.0 | PASS |
| Band66 | 1.4MHz | 16QAM | 132322 | 3RB#1 | 22.11 | 24.0 | PASS |
| Band66 | 1.4MHz | 16QAM | 132322 | 3RB#3 | 22.12 | 24.0 | PASS |
| Band66 | 1.4MHz | 16QAM | 132322 | 6RB#0 | 21.33 | 24.0 | PASS |
| Band66 | 1.4MHz | 16QAM | 132665 | 1RB#0 | 22.31 | 24.0 | PASS |
| Band66 | 1.4MHz | 16QAM | 132665 | 1RB#2 | 22.42 | 24.0 | PASS |
| Band66 | 1.4MHz | 16QAM | 132665 | 1RB#5 | 22.23 | 24.0 | PASS |
| Band66 | 1.4MHz | 16QAM | 132665 | 3RB#0 | 22.01 | 24.0 | PASS |
| Band66 | 1.4MHz | 16QAM | 132665 | 3RB#1 | 22.02 | 24.0 | PASS |
| Band66 | 1.4MHz | 16QAM | 132665 | 3RB#3 | 22.03 | 24.0 | PASS |
| Band66 | 1.4MHz | 16QAM | 132665 | 6RB#0 | 21.32 | 24.0 | PASS |
| Band66 | 3MHz | QPSK | 131987 | 1RB#0 | 23.41 | 24.0 | PASS |
| Band66 | 3MHz | QPSK | 131987 | 1RB#8 | 23.42 | 24.0 | PASS |
| Band66 | 3MHz | QPSK | 131987 | 1RB#14 | 23.43 | 24.0 | PASS |
| Band66 | 3MHz | QPSK | 131987 | 8RB#0 | 22.51 | 24.0 | PASS |
| Band66 | 3MHz | QPSK | 131987 | 8RB#4 | 22.42 | 24.0 | PASS |
| Band66 | 3MHz | QPSK | 131987 | 8RB#7 | 22.43 | 24.0 | PASS |
| Band66 | 3MHz | QPSK | 131987 | 15RB#0 | 22.41 | 24.0 | PASS |
| Band66 | 3MHz | QPSK | 132322 | 1RB#0 | 23.32 | 24.0 | PASS |
| Band66 | 3MHz | QPSK | 132322 | 1RB#8 | 23.33 | 24.0 | PASS |
| Band66 | 3MHz | QPSK | 132322 | 1RB#14 | 23.32 | 24.0 | PASS |
| Band66 | 3MHz | QPSK | 132322 | 8RB#0 | 22.33 | 24.0 | PASS |
| Band66 | 3MHz | QPSK | 132322 | 8RB#4 | 22.32 | 24.0 | PASS |
| Band66 | 3MHz | QPSK | 132322 | 8RB#7 | 22.43 | 24.0 | PASS |
| Band66 | 3MHz | QPSK | 132322 | 15RB#0 | 22.31 | 24.0 | PASS |
| Band66 | 3MHz | QPSK | 132657 | 1RB#0 | 23.42 | 24.0 | PASS |
| Band66 | 3MHz | QPSK | 132657 | 1RB#8 | 23.43 | 24.0 | PASS |

| | | | | | | | |
|--------|------|-------|--------|---------|-------|------|------|
| Band66 | 3MHz | QPSK | 132657 | 1RB#14 | 23.41 | 24.0 | PASS |
| Band66 | 3MHz | QPSK | 132657 | 8RB#0 | 22.42 | 24.0 | PASS |
| Band66 | 3MHz | QPSK | 132657 | 8RB#4 | 22.43 | 24.0 | PASS |
| Band66 | 3MHz | QPSK | 132657 | 8RB#7 | 22.51 | 24.0 | PASS |
| Band66 | 3MHz | QPSK | 132657 | 15RB#0 | 22.32 | 24.0 | PASS |
| Band66 | 3MHz | 16QAM | 131987 | 1RB#0 | 22.63 | 24.0 | PASS |
| Band66 | 3MHz | 16QAM | 131987 | 1RB#8 | 22.51 | 24.0 | PASS |
| Band66 | 3MHz | 16QAM | 131987 | 1RB#14 | 22.52 | 24.0 | PASS |
| Band66 | 3MHz | 16QAM | 131987 | 8RB#0 | 21.53 | 24.0 | PASS |
| Band66 | 3MHz | 16QAM | 131987 | 8RB#4 | 21.51 | 24.0 | PASS |
| Band66 | 3MHz | 16QAM | 131987 | 8RB#7 | 21.52 | 24.0 | PASS |
| Band66 | 3MHz | 16QAM | 131987 | 15RB#0 | 21.43 | 24.0 | PASS |
| Band66 | 3MHz | 16QAM | 132322 | 1RB#0 | 22.41 | 24.0 | PASS |
| Band66 | 3MHz | 16QAM | 132322 | 1RB#8 | 22.42 | 24.0 | PASS |
| Band66 | 3MHz | 16QAM | 132322 | 1RB#14 | 22.33 | 24.0 | PASS |
| Band66 | 3MHz | 16QAM | 132322 | 8RB#0 | 21.31 | 24.0 | PASS |
| Band66 | 3MHz | 16QAM | 132322 | 8RB#4 | 21.32 | 24.0 | PASS |
| Band66 | 3MHz | 16QAM | 132322 | 8RB#7 | 21.33 | 24.0 | PASS |
| Band66 | 3MHz | 16QAM | 132322 | 15RB#0 | 21.21 | 24.0 | PASS |
| Band66 | 3MHz | 16QAM | 132657 | 1RB#0 | 22.23 | 24.0 | PASS |
| Band66 | 3MHz | 16QAM | 132657 | 1RB#8 | 22.22 | 24.0 | PASS |
| Band66 | 3MHz | 16QAM | 132657 | 1RB#14 | 22.22 | 24.0 | PASS |
| Band66 | 3MHz | 16QAM | 132657 | 8RB#0 | 21.43 | 24.0 | PASS |
| Band66 | 3MHz | 16QAM | 132657 | 8RB#4 | 21.32 | 24.0 | PASS |
| Band66 | 3MHz | 16QAM | 132657 | 8RB#7 | 21.32 | 24.0 | PASS |
| Band66 | 3MHz | 16QAM | 132657 | 15RB#0 | 21.13 | 24.0 | PASS |
| Band66 | 5MHz | QPSK | 131997 | 1RB#0 | 23.42 | 24.0 | PASS |
| Band66 | 5MHz | QPSK | 131997 | 1RB#12 | 23.51 | 24.0 | PASS |
| Band66 | 5MHz | QPSK | 131997 | 1RB#24 | 23.42 | 24.0 | PASS |
| Band66 | 5MHz | QPSK | 131997 | 12RB#0 | 22.43 | 24.0 | PASS |
| Band66 | 5MHz | QPSK | 131997 | 12RB#6 | 22.52 | 24.0 | PASS |
| Band66 | 5MHz | QPSK | 131997 | 12RB#13 | 22.43 | 24.0 | PASS |
| Band66 | 5MHz | QPSK | 131997 | 25RB#0 | 22.42 | 24.0 | PASS |
| Band66 | 5MHz | QPSK | 132322 | 1RB#0 | 23.31 | 24.0 | PASS |
| Band66 | 5MHz | QPSK | 132322 | 1RB#12 | 23.42 | 24.0 | PASS |
| Band66 | 5MHz | QPSK | 132322 | 1RB#24 | 23.33 | 24.0 | PASS |
| Band66 | 5MHz | QPSK | 132322 | 12RB#0 | 22.31 | 24.0 | PASS |

| | | | | | | | |
|--------|-------|-------|--------|---------|-------|------|------|
| Band66 | 5MHz | QPSK | 132322 | 12RB#6 | 22.32 | 24.0 | PASS |
| Band66 | 5MHz | QPSK | 132322 | 12RB#13 | 22.33 | 24.0 | PASS |
| Band66 | 5MHz | QPSK | 132322 | 25RB#0 | 22.31 | 24.0 | PASS |
| Band66 | 5MHz | QPSK | 132647 | 1RB#0 | 23.32 | 24.0 | PASS |
| Band66 | 5MHz | QPSK | 132647 | 1RB#12 | 23.53 | 24.0 | PASS |
| Band66 | 5MHz | QPSK | 132647 | 1RB#24 | 23.31 | 24.0 | PASS |
| Band66 | 5MHz | QPSK | 132647 | 12RB#0 | 22.32 | 24.0 | PASS |
| Band66 | 5MHz | QPSK | 132647 | 12RB#6 | 22.33 | 24.0 | PASS |
| Band66 | 5MHz | QPSK | 132647 | 12RB#13 | 22.22 | 24.0 | PASS |
| Band66 | 5MHz | QPSK | 132647 | 25RB#0 | 22.31 | 24.0 | PASS |
| Band66 | 5MHz | 16QAM | 131997 | 1RB#0 | 22.42 | 24.0 | PASS |
| Band66 | 5MHz | 16QAM | 131997 | 1RB#12 | 22.43 | 24.0 | PASS |
| Band66 | 5MHz | 16QAM | 131997 | 1RB#24 | 22.41 | 24.0 | PASS |
| Band66 | 5MHz | 16QAM | 131997 | 12RB#0 | 21.42 | 24.0 | PASS |
| Band66 | 5MHz | 16QAM | 131997 | 12RB#6 | 21.43 | 24.0 | PASS |
| Band66 | 5MHz | 16QAM | 131997 | 12RB#13 | 21.41 | 24.0 | PASS |
| Band66 | 5MHz | 16QAM | 131997 | 25RB#0 | 21.52 | 24.0 | PASS |
| Band66 | 5MHz | 16QAM | 132322 | 1RB#0 | 22.43 | 24.0 | PASS |
| Band66 | 5MHz | 16QAM | 132322 | 1RB#12 | 22.51 | 24.0 | PASS |
| Band66 | 5MHz | 16QAM | 132322 | 1RB#24 | 22.42 | 24.0 | PASS |
| Band66 | 5MHz | 16QAM | 132322 | 12RB#0 | 21.33 | 24.0 | PASS |
| Band66 | 5MHz | 16QAM | 132322 | 12RB#6 | 21.32 | 24.0 | PASS |
| Band66 | 5MHz | 16QAM | 132322 | 12RB#13 | 21.21 | 24.0 | PASS |
| Band66 | 5MHz | 16QAM | 132322 | 25RB#0 | 21.22 | 24.0 | PASS |
| Band66 | 5MHz | 16QAM | 132647 | 1RB#0 | 22.23 | 24.0 | PASS |
| Band66 | 5MHz | 16QAM | 132647 | 1RB#12 | 22.31 | 24.0 | PASS |
| Band66 | 5MHz | 16QAM | 132647 | 1RB#24 | 22.22 | 24.0 | PASS |
| Band66 | 5MHz | 16QAM | 132647 | 12RB#0 | 21.23 | 24.0 | PASS |
| Band66 | 5MHz | 16QAM | 132647 | 12RB#6 | 21.32 | 24.0 | PASS |
| Band66 | 5MHz | 16QAM | 132647 | 12RB#13 | 21.22 | 24.0 | PASS |
| Band66 | 5MHz | 16QAM | 132647 | 25RB#0 | 21.23 | 24.0 | PASS |
| Band66 | 10MHz | QPSK | 132022 | 1RB#0 | 23.31 | 24.0 | PASS |
| Band66 | 10MHz | QPSK | 132022 | 1RB#24 | 23.51 | 24.0 | PASS |
| Band66 | 10MHz | QPSK | 132022 | 1RB#49 | 23.33 | 24.0 | PASS |
| Band66 | 10MHz | QPSK | 132022 | 25RB#0 | 22.53 | 24.0 | PASS |
| Band66 | 10MHz | QPSK | 132022 | 25RB#12 | 22.51 | 24.0 | PASS |
| Band66 | 10MHz | QPSK | 132022 | 25RB#25 | 22.42 | 24.0 | PASS |

| | | | | | | | |
|--------|-------|-------|--------|---------|-------|------|------|
| Band66 | 10MHz | QPSK | 132022 | 50RB#0 | 22.53 | 24.0 | PASS |
| Band66 | 10MHz | QPSK | 132322 | 1RB#0 | 23.31 | 24.0 | PASS |
| Band66 | 10MHz | QPSK | 132322 | 1RB#24 | 23.51 | 24.0 | PASS |
| Band66 | 10MHz | QPSK | 132322 | 1RB#49 | 23.32 | 24.0 | PASS |
| Band66 | 10MHz | QPSK | 132322 | 25RB#0 | 22.41 | 24.0 | PASS |
| Band66 | 10MHz | QPSK | 132322 | 25RB#12 | 22.42 | 24.0 | PASS |
| Band66 | 10MHz | QPSK | 132322 | 25RB#25 | 22.33 | 24.0 | PASS |
| Band66 | 10MHz | QPSK | 132322 | 50RB#0 | 22.31 | 24.0 | PASS |
| Band66 | 10MHz | QPSK | 132622 | 1RB#0 | 23.32 | 24.0 | PASS |
| Band66 | 10MHz | QPSK | 132622 | 1RB#24 | 23.51 | 24.0 | PASS |
| Band66 | 10MHz | QPSK | 132622 | 1RB#49 | 23.42 | 24.0 | PASS |
| Band66 | 10MHz | QPSK | 132622 | 25RB#0 | 22.43 | 24.0 | PASS |
| Band66 | 10MHz | QPSK | 132622 | 25RB#12 | 22.45 | 24.0 | PASS |
| Band66 | 10MHz | QPSK | 132622 | 25RB#25 | 22.31 | 24.0 | PASS |
| Band66 | 10MHz | QPSK | 132622 | 50RB#0 | 22.32 | 24.0 | PASS |
| Band66 | 10MHz | 16QAM | 132022 | 1RB#0 | 22.61 | 24.0 | PASS |
| Band66 | 10MHz | 16QAM | 132022 | 1RB#24 | 22.62 | 24.0 | PASS |
| Band66 | 10MHz | 16QAM | 132022 | 1RB#49 | 22.63 | 24.0 | PASS |
| Band66 | 10MHz | 16QAM | 132022 | 25RB#0 | 21.54 | 24.0 | PASS |
| Band66 | 10MHz | 16QAM | 132022 | 25RB#12 | 21.52 | 24.0 | PASS |
| Band66 | 10MHz | 16QAM | 132022 | 25RB#25 | 21.53 | 24.0 | PASS |
| Band66 | 10MHz | 16QAM | 132022 | 50RB#0 | 21.52 | 24.0 | PASS |
| Band66 | 10MHz | 16QAM | 132322 | 1RB#0 | 22.41 | 24.0 | PASS |
| Band66 | 10MHz | 16QAM | 132322 | 1RB#24 | 22.52 | 24.0 | PASS |
| Band66 | 10MHz | 16QAM | 132322 | 1RB#49 | 22.41 | 24.0 | PASS |
| Band66 | 10MHz | 16QAM | 132322 | 25RB#0 | 21.32 | 24.0 | PASS |
| Band66 | 10MHz | 16QAM | 132322 | 25RB#12 | 21.33 | 24.0 | PASS |
| Band66 | 10MHz | 16QAM | 132322 | 25RB#25 | 21.22 | 24.0 | PASS |
| Band66 | 10MHz | 16QAM | 132322 | 50RB#0 | 21.32 | 24.0 | PASS |
| Band66 | 10MHz | 16QAM | 132622 | 1RB#0 | 22.31 | 24.0 | PASS |
| Band66 | 10MHz | 16QAM | 132622 | 1RB#24 | 22.21 | 24.0 | PASS |
| Band66 | 10MHz | 16QAM | 132622 | 1RB#49 | 22.22 | 24.0 | PASS |
| Band66 | 10MHz | 16QAM | 132622 | 25RB#0 | 21.43 | 24.0 | PASS |
| Band66 | 10MHz | 16QAM | 132622 | 25RB#12 | 21.42 | 24.0 | PASS |
| Band66 | 10MHz | 16QAM | 132622 | 25RB#25 | 21.31 | 24.0 | PASS |
| Band66 | 10MHz | 16QAM | 132622 | 50RB#0 | 21.41 | 24.0 | PASS |
| Band66 | 15MHz | QPSK | 132047 | 1RB#0 | 23.42 | 24.0 | PASS |

| | | | | | | | |
|--------|-------|-------|--------|---------|-------|------|------|
| Band66 | 15MHz | QPSK | 132047 | 1RB#38 | 23.43 | 24.0 | PASS |
| Band66 | 15MHz | QPSK | 132047 | 1RB#74 | 23.22 | 24.0 | PASS |
| Band66 | 15MHz | QPSK | 132047 | 38RB#0 | 22.51 | 24.0 | PASS |
| Band66 | 15MHz | QPSK | 132047 | 38RB#18 | 22.52 | 24.0 | PASS |
| Band66 | 15MHz | QPSK | 132047 | 38RB#37 | 22.53 | 24.0 | PASS |
| Band66 | 15MHz | QPSK | 132047 | 75RB#0 | 22.51 | 24.0 | PASS |
| Band66 | 15MHz | QPSK | 132322 | 1RB#0 | 23.32 | 24.0 | PASS |
| Band66 | 15MHz | QPSK | 132322 | 1RB#38 | 23.43 | 24.0 | PASS |
| Band66 | 15MHz | QPSK | 132322 | 1RB#74 | 23.31 | 24.0 | PASS |
| Band66 | 15MHz | QPSK | 132322 | 38RB#0 | 22.52 | 24.0 | PASS |
| Band66 | 15MHz | QPSK | 132322 | 38RB#18 | 22.53 | 24.0 | PASS |
| Band66 | 15MHz | QPSK | 132322 | 38RB#37 | 22.52 | 24.0 | PASS |
| Band66 | 15MHz | QPSK | 132322 | 75RB#0 | 22.41 | 24.0 | PASS |
| Band66 | 15MHz | QPSK | 132597 | 1RB#0 | 23.32 | 24.0 | PASS |
| Band66 | 15MHz | QPSK | 132597 | 1RB#38 | 23.43 | 24.0 | PASS |
| Band66 | 15MHz | QPSK | 132597 | 1RB#74 | 23.32 | 24.0 | PASS |
| Band66 | 15MHz | QPSK | 132597 | 38RB#0 | 22.52 | 24.0 | PASS |
| Band66 | 15MHz | QPSK | 132597 | 38RB#18 | 22.41 | 24.0 | PASS |
| Band66 | 15MHz | QPSK | 132597 | 38RB#37 | 22.42 | 24.0 | PASS |
| Band66 | 15MHz | QPSK | 132597 | 75RB#0 | 22.41 | 24.0 | PASS |
| Band66 | 15MHz | 16QAM | 132047 | 1RB#0 | 22.53 | 24.0 | PASS |
| Band66 | 15MHz | 16QAM | 132047 | 1RB#38 | 22.61 | 24.0 | PASS |
| Band66 | 15MHz | 16QAM | 132047 | 1RB#74 | 22.42 | 24.0 | PASS |
| Band66 | 15MHz | 16QAM | 132047 | 38RB#0 | 22.51 | 24.0 | PASS |
| Band66 | 15MHz | 16QAM | 132047 | 38RB#18 | 22.52 | 24.0 | PASS |
| Band66 | 15MHz | 16QAM | 132047 | 38RB#37 | 22.54 | 24.0 | PASS |
| Band66 | 15MHz | 16QAM | 132047 | 75RB#0 | 21.44 | 24.0 | PASS |
| Band66 | 15MHz | 16QAM | 132322 | 1RB#0 | 22.52 | 24.0 | PASS |
| Band66 | 15MHz | 16QAM | 132322 | 1RB#38 | 22.61 | 24.0 | PASS |
| Band66 | 15MHz | 16QAM | 132322 | 1RB#74 | 22.52 | 24.0 | PASS |
| Band66 | 15MHz | 16QAM | 132322 | 38RB#0 | 22.53 | 24.0 | PASS |
| Band66 | 15MHz | 16QAM | 132322 | 38RB#18 | 22.41 | 24.0 | PASS |
| Band66 | 15MHz | 16QAM | 132322 | 38RB#37 | 22.52 | 24.0 | PASS |
| Band66 | 15MHz | 16QAM | 132322 | 75RB#0 | 21.42 | 24.0 | PASS |
| Band66 | 15MHz | 16QAM | 132597 | 1RB#0 | 22.23 | 24.0 | PASS |
| Band66 | 15MHz | 16QAM | 132597 | 1RB#38 | 22.34 | 24.0 | PASS |
| Band66 | 15MHz | 16QAM | 132597 | 1RB#74 | 22.22 | 24.0 | PASS |

| | | | | | | | |
|--------|-------|-------|--------|---------|--------------|------|------|
| Band66 | 15MHz | 16QAM | 132597 | 38RB#0 | 22.44 | 24.0 | PASS |
| Band66 | 15MHz | 16QAM | 132597 | 38RB#18 | 22.42 | 24.0 | PASS |
| Band66 | 15MHz | 16QAM | 132597 | 38RB#37 | 22.43 | 24.0 | PASS |
| Band66 | 15MHz | 16QAM | 132597 | 75RB#0 | 21.42 | 24.0 | PASS |
| Band66 | 20MHz | QPSK | 132072 | 1RB#0 | 23.41 | 24.0 | PASS |
| Band66 | 20MHz | QPSK | 132072 | 1RB#49 | 23.64 | 24.0 | PASS |
| Band66 | 20MHz | QPSK | 132072 | 1RB#99 | 23.22 | 24.0 | PASS |
| Band66 | 20MHz | QPSK | 132072 | 50RB#0 | 22.53 | 24.0 | PASS |
| Band66 | 20MHz | QPSK | 132072 | 50RB#25 | 22.51 | 24.0 | PASS |
| Band66 | 20MHz | QPSK | 132072 | 50RB#50 | 22.42 | 24.0 | PASS |
| Band66 | 20MHz | QPSK | 132072 | 100RB#0 | 22.43 | 24.0 | PASS |
| Band66 | 20MHz | QPSK | 132322 | 1RB#0 | 23.31 | 24.0 | PASS |
| Band66 | 20MHz | QPSK | 132322 | 1RB#49 | 23.52 | 24.0 | PASS |
| Band66 | 20MHz | QPSK | 132322 | 1RB#99 | 23.33 | 24.0 | PASS |
| Band66 | 20MHz | QPSK | 132322 | 50RB#0 | 22.32 | 24.0 | PASS |
| Band66 | 20MHz | QPSK | 132322 | 50RB#25 | 22.31 | 24.0 | PASS |
| Band66 | 20MHz | QPSK | 132322 | 50RB#50 | 22.22 | 24.0 | PASS |
| Band66 | 20MHz | QPSK | 132322 | 100RB#0 | 22.33 | 24.0 | PASS |
| Band66 | 20MHz | QPSK | 132572 | 1RB#0 | 23.11 | 24.0 | PASS |
| Band66 | 20MHz | QPSK | 132572 | 1RB#49 | 23.32 | 24.0 | PASS |
| Band66 | 20MHz | QPSK | 132572 | 1RB#99 | 23.23 | 24.0 | PASS |
| Band66 | 20MHz | QPSK | 132572 | 50RB#0 | 22.32 | 24.0 | PASS |
| Band66 | 20MHz | QPSK | 132572 | 50RB#25 | 22.31 | 24.0 | PASS |
| Band66 | 20MHz | QPSK | 132572 | 50RB#50 | 22.31 | 24.0 | PASS |
| Band66 | 20MHz | QPSK | 132572 | 100RB#0 | 22.32 | 24.0 | PASS |
| Band66 | 20MHz | 16QAM | 132072 | 1RB#0 | 22.43 | 24.0 | PASS |
| Band66 | 20MHz | 16QAM | 132072 | 1RB#49 | 22.62 | 24.0 | PASS |
| Band66 | 20MHz | 16QAM | 132072 | 1RB#99 | 22.33 | 24.0 | PASS |
| Band66 | 20MHz | 16QAM | 132072 | 50RB#0 | 21.56 | 24.0 | PASS |
| Band66 | 20MHz | 16QAM | 132072 | 50RB#25 | 21.52 | 24.0 | PASS |
| Band66 | 20MHz | 16QAM | 132072 | 50RB#50 | 21.51 | 24.0 | PASS |
| Band66 | 20MHz | 16QAM | 132072 | 100RB#0 | 21.52 | 24.0 | PASS |
| Band66 | 20MHz | 16QAM | 132322 | 1RB#0 | 22.43 | 24.0 | PASS |
| Band66 | 20MHz | 16QAM | 132322 | 1RB#49 | 22.61 | 24.0 | PASS |
| Band66 | 20MHz | 16QAM | 132322 | 1RB#99 | 22.32 | 24.0 | PASS |
| Band66 | 20MHz | 16QAM | 132322 | 50RB#0 | 21.33 | 24.0 | PASS |
| Band66 | 20MHz | 16QAM | 132322 | 50RB#25 | 21.36 | 24.0 | PASS |

| | | | | | | | |
|--------|-------|-------|--------|---------|-------|------|------|
| Band66 | 20MHz | 16QAM | 132322 | 50RB#50 | 21.22 | 24.0 | PASS |
| Band66 | 20MHz | 16QAM | 132322 | 100RB#0 | 21.31 | 24.0 | PASS |
| Band66 | 20MHz | 16QAM | 132572 | 1RB#0 | 22.22 | 24.0 | PASS |
| Band66 | 20MHz | 16QAM | 132572 | 1RB#49 | 22.53 | 24.0 | PASS |
| Band66 | 20MHz | 16QAM | 132572 | 1RB#99 | 22.11 | 24.0 | PASS |
| Band66 | 20MHz | 16QAM | 132572 | 50RB#0 | 21.42 | 24.0 | PASS |
| Band66 | 20MHz | 16QAM | 132572 | 50RB#25 | 21.33 | 24.0 | PASS |
| Band66 | 20MHz | 16QAM | 132572 | 50RB#50 | 21.36 | 24.0 | PASS |
| Band66 | 20MHz | 16QAM | 132572 | 100RB#0 | 21.34 | 24.0 | PASS |

Remark:

1. Per KDB941225 D05 v02r05, Start with the largest channel bandwidth then measure SAR for QPSK with 1 RB allocation, using the RB offset and required test channel combination with the highest maximum output power among RB offsets at the upper edge, middle, and lower edge of each required test channel. When the reported SAR is ≤ 0.8 W/kg, testing of the remaining RB offset configurations and required test channels is not required for 1 RB allocation; otherwise, SAR is required for the remaining required test channels and only for the RB offset configuration with the highest output power for that channel. 6 When the reported SAR of a required test channel is > 1.45 W/kg, SAR is required for all three RB offset configurations for that required test channel.
2. Per KDB941225 D05 v02r05, the procedures required for 1 RB allocation in 5.2.1 are applied to measure the SAR for QPSK with 50% RB allocation.
3. Per KDB941225 D05 v02r05, For QPSK with 100% RB allocation, SAR is not required when the highest maximum output power for 100 % RB allocation is less than the highest maximum output power in 50% and 1 RB allocations, and the highest reported SAR for 1 RB and 50% RB allocation in 5.2.1 and 5.2.2 are ≤ 0.8 W/kg. Otherwise, SAR is measured for the highest output power channel; and if the reported SAR is > 1.45 W/kg, the remaining required test channels must also be tested.
4. Per KDB941225 D05 v02r05, for each modulation besides QPSK; e.g., 16-QAM, 64-QAM, apply the QPSK procedures in 5.2.1, 5.2.2, and 5.2.3 to determine the QAM configurations that may need SAR measurement. For each configuration identified as required for testing, SAR is required only when the highest maximum output power for the configuration in the higher order modulation is $> \frac{1}{2}$ dB higher than the same configuration in QPSK or when the reported SAR for the QPSK configuration is > 1.45 W/kg.

| WLAN(2.4GHz) | | | | | |
|-----------------|-----------|---------|-----------------|-----------------------|---------------------|
| Test Mode | Data Rate | Channel | Frequency (MHz) | Conducted Power (dBm) | Tune-up power (dBm) |
| 802.11b | 11Mbps | CH 01 | 2412 | 15.58 | 16.0 |
| | | CH 06 | 2437 | 15.38 | 15.5 |
| | | CH 11 | 2462 | 14.49 | 14.5 |
| 802.11g | 54Mbps | CH 01 | 2412 | 14.27 | 14.5 |
| | | CH 06 | 2437 | 14.35 | 14.5 |
| | | CH 11 | 2462 | 14.02 | 14.5 |
| 802.11n (20MHz) | MCS7 | CH 01 | 2412 | 13.86 | 14.0 |
| | | CH 06 | 2437 | 13.69 | 14.0 |
| | | CH 11 | 2462 | 13.89 | 14.0 |
| 802.11n (40MHz) | MCS7 | CH 03 | 2422 | 12.18 | 12.5 |
| | | CH 06 | 2437 | 12.04 | 12.5 |
| | | CH 09 | 2452 | 11.87 | 12.0 |

Remark:

1. Per KDB 248227 D01 v02r02, For 802.11b DSSS SAR measurements, DSSS SAR procedure applies to fixed exposure test position and initial test position procedure applies to multiple exposure test positions.
2. Per KDB 248227 D01 v02r02, For 802.11b DSSS SAR measurements ,when the reported SAR of the highest measured maximum output power channel (see 3.1) for the exposure configuration is ≤ 0.8 W/kg, no further SAR testing is required for 802.11b DSSS in that exposure configuration. When the reported SAR is > 0.8 W/kg, SAR is required for that exposure configuration using the next highest measured output power channel. When any reported SAR is > 1.2 W/kg, SAR is required for the third channel; i.e., all channels require testing.
- 3 .For OFDM modes (802.11g/n), SAR is not required when the highest reported SAR for DSSS is adjusted by the ratio of OFDM to DSSS specified maximum output power and it is ≤ 1.2 W/kg.

| Bluetooth | | | |
|-----------|-----------|-----------------------|----------------------|
| Test Mode | Data Rate | Conducted Power (dBm) | Tune- up power (dBm) |
| GFSK | 1Mbps | 7.77 | 8.0 |
| 4*π4DQPSK | 2Mbps | 7.15 | 7.5 |
| 8DPSK | 3Mbps | 7.3 | 7.5 |

| Bluetooth | | | |
|-----------|--------------|-----------------------|----------------------|
| Test Mode | Channel(MHz) | Conducted Power (dBm) | Tune- up power (dBm) |
| BLE | 2402 | -3.51 | -3.5 |
| | 2440 | -3.6 | -3.5 |
| | 2480 | -3.25 | -3.0 |

| NFC | | | |
|-----------|--------------|-----------------------|----------------------|
| Test Mode | Channel(MHz) | Conducted Power (dBm) | Tune- up power (dBm) |
| NFC | 13.56 | -47.07 | -47.0 |

Remark:

NFC maximum output power is -34.07dBm *respectively*, and Maximum Tune-Up output power is -34.0dBm *respectively*,. Per KDB 447498 D01 V06, the 1-g and 10-g SAR test exclusion thresholds for 100 MHz to 6 GHz at test separation distances ≤ 50 mm are determined by:

$$[(\text{max. power of channel, including tune-up tolerance, mW})/(\text{min. test separation distance, mm})] \cdot [\sqrt{f(\text{GHz})}] \leq$$

3.0 for 1-g SAR and ≤ 7.5 for 10-g extremity SAR, where

- f(GHz) is the RF channel transmit frequency in GHz
- Power and distance are rounded to the nearest mW and mm before calculation¹⁷
- The result is rounded to one decimal place for comparison

NFC:

| Tune-Up Power (dBm) | Max. Power (mW) | Distance (mm) | Frequency (GHz) | Result | Limit |
|---------------------|-----------------|---------------|-----------------|---------|-------|
| -47.0 | 0.00002 | 5 | 0.01356 | 0.00001 | 3 |

The exclusion threshold is $0.00001 < 3$, therefore, the RF exposure evaluation is not required.

9.2 Test Results for Standalone SAR Test

Body SAR

| GSM850 – Body SAR Test (Gap: 0mm) | | | | | | | | | |
|-----------------------------------|----------|--------------------|-----------|-------|--------------------|-------------------|----------------|--------------|---------------------|
| Plot No. | Mode | Test Position Body | Frequency | | Output Power (dBm) | Rated Limit (dBm) | Scaling Factor | SAR1g (W/kg) | Scaled SAR1g (W/kg) |
| | | | CH. | MHz | | | | | |
| | GSM | Back Face | 128 | 836.6 | 33.11 | 33.5 | 1.094 | 0.437 | 0.478 |
| | GSM | Back Face | 190 | 824.2 | 33.07 | 33.5 | 1.104 | 0.517 | 0.571 |
| | GSM | Back Face | 251 | 848.8 | 33.10 | 33.5 | 1.096 | 0.554 | 0.607 |
| | GPRS_4TX | Back Face | 128 | 836.6 | 29.56 | 30.0 | 1.107 | 0.437 | 0.484 |
| | GPRS_4TX | Right Side | 128 | 836.6 | 29.56 | 30.0 | 1.107 | 0.201 | 0.222 |
| | GPRS_4TX | Top Side | 128 | 836.6 | 29.56 | 30.0 | 1.107 | 0.310 | 0.343 |
| | GPRS_4TX | Back Face | 190 | 824.2 | 29.48 | 30.0 | 1.127 | 0.509 | 0.574 |
| 1. | GPRS_4TX | Back Face | 251 | 848.8 | 29.40 | 30.0 | 1.148 | 0.559 | 0.642 |

| GSM1900 – Body SAR Test (Gap: 0mm) | | | | | | | | | |
|------------------------------------|----------|--------------------|-----------|--------|--------------------|-------------------|----------------|--------------|---------------------|
| Plot No. | Mode | Test Position Body | Frequency | | Output Power (dBm) | Rated Limit (dBm) | Scaling Factor | SAR1g (W/kg) | Scaled SAR1g (W/kg) |
| | | | CH. | MHz | | | | | |
| | GSM | Back Face | 512 | 1850.2 | 30.51 | 31.0 | 1.119 | 0.433 | 0.485 |
| | GSM | Back Face | 661 | 1880 | 30.30 | 31.0 | 1.175 | 0.373 | 0.438 |
| | GSM | Back Face | 810 | 1909.8 | 30.22 | 31.0 | 1.197 | 0.340 | 0.407 |
| 2. | GPRS_4TX | Back Face | 512 | 1850.2 | 27.07 | 27.5 | 1.104 | 0.510 | 0.563 |
| | GPRS_4TX | Right Side | 512 | 1850.2 | 27.07 | 27.5 | 1.104 | 0.420 | 0.464 |
| | GPRS_4TX | Top Side | 512 | 1850.2 | 27.07 | 27.5 | 1.104 | 0.302 | 0.333 |
| | GPRS_4TX | Back Face | 661 | 1880 | 27.04 | 27.5 | 1.112 | 0.426 | 0.474 |
| | GPRS_4TX | Back Face | 810 | 1909.8 | 26.88 | 27.5 | 1.153 | 0.366 | 0.422 |

| WCDMA Band 2 – Body SAR Test (Gap: 0mm) | | | | | | | | | |
|---|-----------|--------------------|-----------|--------|--------------------|-------------------|----------------|--------------|---------------------|
| Plot No. | Mode | Test Position Body | Frequency | | Output Power (dBm) | Rated Limit (dBm) | Scaling Factor | SAR1g (W/kg) | Scaled SAR1g (W/kg) |
| | | | CH. | MHz | | | | | |
| | RMC 12.2k | Back Face | 9538 | 1907.6 | 24.56 | 25.0 | 1.107 | 0.804 | 0.890 |
| | RMC 12.2k | Right Side | 9538 | 1907.6 | 24.56 | 25.0 | 1.107 | 0.532 | 0.589 |
| | RMC 12.2k | Top Side | 9538 | 1907.6 | 24.56 | 25.0 | 1.107 | 0.324 | 0.359 |
| 3. | RMC 12.2k | Back Face | 9262 | 1852.4 | 24.05 | 24.5 | 1.109 | 0.819 | 0.908 |
| | RMC 12.2k | Back Face | 9400 | 1880.0 | 24.40 | 24.5 | 1.023 | 0.772 | 0.790 |

| WCDMA Band 4 – Body SAR Test (Gap: 0mm) | | | | | | | | | |
|---|-----------|--------------------|-----------|--------|--------------------|-------------------|----------------|--------------|---------------------|
| Plot No. | Mode | Test Position Body | Frequency | | Output Power (dBm) | Rated Limit (dBm) | Scaling Factor | SAR1g (W/kg) | Scaled SAR1g (W/kg) |
| | | | CH. | MHz | | | | | |
| | RMC 12.2k | Back Face | 1312 | 1712.4 | 23.46 | 23.5 | 1.009 | 0.858 | 0.866 |
| | RMC 12.2k | Right Side | 1312 | 1712.4 | 23.46 | 23.5 | 1.009 | 0.438 | 0.442 |
| | RMC 12.2k | Top Side | 1312 | 1712.4 | 23.46 | 23.5 | 1.009 | 0.358 | 0.361 |
| | RMC 12.2k | Back Face | 1412 | 1732.4 | 23.29 | 23.5 | 1.050 | 0.850 | 0.892 |
| 4. | RMC 12.2k | Back Face | 1513 | 1752.6 | 23.20 | 23.5 | 1.072 | 0.845 | 0.905 |

| WCDMA Band 5 – Body SAR Test (Gap: 0mm) | | | | | | | | | |
|---|-----------|--------------------|-----------|-------|--------------------|-------------------|----------------|--------------|---------------------|
| Plot No. | Mode | Test Position Body | Frequency | | Output Power (dBm) | Rated Limit (dBm) | Scaling Factor | SAR1g (W/kg) | Scaled SAR1g (W/kg) |
| | | | CH. | MHz | | | | | |
| 5. | RMC 12.2k | Back Face | 4233 | 846.6 | 24.07 | 24.5 | 1.104 | 0.676 | 0.746 |
| | RMC 12.2k | Right Side | 4233 | 846.6 | 24.07 | 24.5 | 1.104 | 0.444 | 0.490 |
| | RMC 12.2k | Top Side | 4233 | 846.6 | 24.07 | 24.5 | 1.104 | 0.324 | 0.358 |
| | RMC 12.2k | Back Face | 4132 | 826.4 | 24.05 | 24.5 | 1.109 | 0.511 | 0.567 |
| | RMC 12.2k | Back Face | 4183 | 836.4 | 24.04 | 24.5 | 1.112 | 0.580 | 0.645 |

| LTE Band 2–Body SAR Test (Gap: 0mm) | | | | | | | | | |
|-------------------------------------|---------------------------|--------------------|-----------|--------------------|-------------------|----------------|---------------|---------------------|--|
| Plot No. | Mode | Test Position Body | Frequency | Output Power (dBm) | Rated Limit (dBm) | Scaling Factor | SAR 1g (W/kg) | Scaled SAR1g (W/kg) | |
| | Modulation, Bandwidth, RB | | MHz | | | | | | |
| | QPSK 20MHz 1RB | Back Face | 1900 | 24.05 | 24.5 | 1.109 | 0.795 | 0.882 | |
| | QPSK 20MHz 1RB | Right Side | 1900 | 24.05 | 24.5 | 1.109 | 0.565 | 0.627 | |
| | QPSK 20MHz 1RB | Top Side | 1900 | 24.05 | 24.5 | 1.109 | 0.618 | 0.685 | |
| 6. | QPSK 20MHz 1RB | Back Face | 1880 | 23.78 | 24.5 | 1.180 | 0.854 | 1.008 | |
| | QPSK 20MHz 1RB | Back Face | 1860 | 23.63 | 24.5 | 1.222 | 0.765 | 0.935 | |
| | QPSK 20MHz 50%RB | Back Face | 1900 | 24.05 | 24.5 | 1.109 | 0.638 | 0.708 | |
| | QPSK 20MHz 50%RB | Right Side | 1900 | 24.05 | 24.5 | 1.109 | 0.461 | 0.511 | |
| | QPSK 20MHz 50%RB | Top Side | 1900 | 24.05 | 24.5 | 1.109 | 0.523 | 0.580 | |
| | QPSK 20MHz 50%RB | Back Face | 1880 | 23.78 | 24.5 | 1.180 | 0.666 | 0.786 | |
| | QPSK 20MHz 50%RB | Back Face | 1860 | 23.63 | 24.5 | 1.222 | 0.635 | 0.776 | |

| LTE Band 4–Body SAR Test (Gap: 0mm) | | | | | | | | |
|-------------------------------------|---------------------------|--------------------|-----------|--------------------|-------------------|----------------|---------------|---------------------|
| Plot No. | Mode | Test Position Body | Frequency | Output Power (dBm) | Rated Limit (dBm) | Scaling Factor | SAR 1g (W/kg) | Scaled SAR1g (W/kg) |
| | Modulation, Bandwidth, RB | | MHz | | | | | |
| | QPSK 20MHz 1RB | Back Face | 1720 | 23.30 | 23.5 | 1.047 | 0.812 | 0.850 |
| | QPSK 20MHz 1RB | Right Side | 1720 | 23.30 | 23.5 | 1.047 | 0.441 | 0.462 |
| | QPSK 20MHz 1RB | Top Side | 1720 | 23.30 | 23.5 | 1.047 | 0.583 | 0.610 |
| | QPSK 20MHz 1RB | Back Face | 1732.5 | 22.96 | 23.5 | 1.132 | 0.836 | 0.947 |
| 7. | QPSK 20MHz 1RB | Back Face | 1745 | 22.93 | 23.5 | 1.140 | 0.834 | 0.951 |
| | QPSK 20MHz 50%RB | Back Face | 1720 | 23.30 | 23.5 | 1.047 | 0.685 | 0.717 |
| | QPSK 20MHz 50%RB | Right Side | 1720 | 23.30 | 23.5 | 1.047 | 0.376 | 0.394 |
| | QPSK 20MHz 50%RB | Top Side | 1720 | 23.30 | 23.5 | 1.047 | 0.495 | 0.518 |
| | QPSK 20MHz 50%RB | Back Face | 1732.5 | 22.96 | 23.5 | 1.132 | 0.661 | 0.749 |
| | QPSK 20MHz 50%RB | Back Face | 1745 | 22.93 | 23.5 | 1.140 | 0.695 | 0.792 |

| LTE Band 5–Body SAR Test (Gap: 0mm) | | | | | | | | |
|-------------------------------------|---------------------------|--------------------|-----------|--------------------|-------------------|----------------|---------------|---------------------|
| Plot No. | Mode | Test Position Body | Frequency | Output Power (dBm) | Rated Limit (dBm) | Scaling Factor | SAR 1g (W/kg) | Scaled SAR1g (W/kg) |
| | Modulation, Bandwidth, RB | | MHz | | | | | |
| 8. | QPSK 10MHz 1RB | Back Face | 836.5 | 23.75 | 24.0 | 1.059 | 0.634 | 0.672 |
| | QPSK 10MHz 1RB | Right Side | 836.5 | 23.75 | 24.0 | 1.059 | 0.296 | 0.314 |
| | QPSK 10MHz 1RB | Top Side | 836.5 | 23.75 | 24.0 | 1.059 | 0.312 | 0.330 |
| | QPSK 10MHz 1RB | Back Face | 829 | 23.54 | 24.0 | 1.112 | 0.486 | 0.540 |
| | QPSK 10MHz 1RB | Back Face | 844 | 23.65 | 24.0 | 1.084 | 0.579 | 0.628 |
| | QPSK 10MHz 50%RB | Back Face | 836.5 | 23.75 | 24.0 | 1.059 | 0.541 | 0.573 |
| | QPSK 10MHz 50%RB | Right Side | 836.5 | 23.75 | 24.0 | 1.059 | 0.259 | 0.274 |
| | QPSK 10MHz 50%RB | Top Side | 836.5 | 23.75 | 24.0 | 1.059 | 0.274 | 0.290 |
| | QPSK 10MHz 50%RB | Back Face | 829 | 23.54 | 24.0 | 1.112 | 0.438 | 0.487 |
| | QPSK 10MHz 50%RB | Back Face | 844 | 23.65 | 24.0 | 1.084 | 0.478 | 0.518 |

| LTE Band 7–Body SAR Test (Gap: 0mm) | | | | | | | | |
|-------------------------------------|---------------------------|--------------------|-----------|--------------------|-------------------|----------------|---------------|---------------------|
| Plot No. | Mode | Test Position Body | Frequency | Output Power (dBm) | Rated Limit (dBm) | Scaling Factor | SAR 1g (W/kg) | Scaled SAR1g (W/kg) |
| | Modulation, Bandwidth, RB | | MHz | | | | | |
| | QPSK 20MHz 1RB | Back Face | 2560 | 22.19 | 22.5 | 1.074 | 0.394 | 0.423 |
| | QPSK 20MHz 1RB | Right Side | 2560 | 22.19 | 22.5 | 1.074 | 0.101 | 0.108 |
| | QPSK 20MHz 1RB | Top Side | 2560 | 22.19 | 22.5 | 1.074 | 0.305 | 0.328 |
| 9. | QPSK 20MHz 1RB | Back Face | 2510 | 21.86 | 22.5 | 1.159 | 0.461 | 0.534 |
| | QPSK 20MHz 1RB | Back Face | 2535 | 21.72 | 22.5 | 1.197 | 0.433 | 0.518 |
| | QPSK 20MHz 50%RB | Back Face | 2560 | 22.19 | 22.5 | 1.074 | 0.309 | 0.332 |
| | QPSK 20MHz 50%RB | Right Side | 2560 | 22.19 | 22.5 | 1.074 | 0.085 | 0.091 |
| | QPSK 20MHz 50%RB | Top Side | 2560 | 22.19 | 22.5 | 1.074 | 0.217 | 0.233 |
| | QPSK 20MHz 50%RB | Back Face | 2510 | 21.86 | 22.5 | 1.159 | 0.357 | 0.414 |
| | QPSK 20MHz 50%RB | Back Face | 2535 | 21.72 | 22.5 | 1.197 | 0.352 | 0.421 |

| LTE Band 12–Body SAR Test (Gap: 0mm) | | | | | | | | |
|--------------------------------------|---------------------------|--------------------|-----------|--------------------|-------------------|----------------|---------------|---------------------|
| Plot No. | Mode | Test Position Body | Frequency | Output Power (dBm) | Rated Limit (dBm) | Scaling Factor | SAR 1g (W/kg) | Scaled SAR1g (W/kg) |
| | Modulation, Bandwidth, RB | | MHz | | | | | |
| 10. | QPSK 10MHz 1RB | Back Face | 704 | 23.72 | 24.0 | 1.067 | 0.235 | 0.251 |
| | QPSK 10MHz 1RB | Right Side | 704 | 23.72 | 24.0 | 1.067 | 0.094 | 0.100 |
| | QPSK 10MHz 1RB | Top Side | 704 | 23.72 | 24.0 | 1.067 | 0.104 | 0.111 |
| | QPSK 10MHz 1RB | Back Face | 707.5 | 23.51 | 24.0 | 1.119 | 0.224 | 0.251 |
| | QPSK 10MHz 1RB | Back Face | 711 | 23.51 | 24.0 | 1.119 | 0.224 | 0.251 |
| | QPSK 10MHz 50%RB | Back Face | 704 | 23.72 | 24.0 | 1.067 | 0.182 | 0.194 |
| | QPSK 10MHz 50%RB | Right Side | 704 | 23.72 | 24.0 | 1.067 | 0.075 | 0.080 |
| | QPSK 10MHz 50%RB | Top Side | 704 | 23.72 | 24.0 | 1.067 | 0.082 | 0.087 |
| | QPSK 10MHz 50%RB | Back Face | 707.5 | 23.51 | 24.0 | 1.119 | 0.202 | 0.226 |
| | QPSK 10MHz 50%RB | Back Face | 711 | 23.51 | 24.0 | 1.119 | 0.169 | 0.189 |

| LTE Band 17–Body SAR Test (Gap: 0mm) | | | | | | | | |
|--------------------------------------|---------------------------|--------------------|-----------|--------------------|-------------------|----------------|---------------|---------------------|
| Plot No. | Mode | Test Position Body | Frequency | Output Power (dBm) | Rated Limit (dBm) | Scaling Factor | SAR 1g (W/kg) | Scaled SAR1g (W/kg) |
| | Modulation, Bandwidth, RB | | MHz | | | | | |
| | QPSK 10MHz 1RB | Back Face | 710 | 23.79 | 24.0 | 1.050 | 0.212 | 0.223 |
| | QPSK 10MHz 1RB | Right Side | 710 | 23.79 | 24.0 | 1.050 | 0.093 | 0.098 |
| | QPSK 10MHz 1RB | Top Side | 710 | 23.79 | 24.0 | 1.050 | 0.101 | 0.106 |
| | QPSK 10MHz 1RB | Back Face | 709 | 23.44 | 24.0 | 1.138 | 0.249 | 0.283 |
| 11. | QPSK 10MHz 1RB | Back Face | 711 | 23.62 | 24.0 | 1.091 | 0.269 | 0.294 |
| | QPSK 10MHz 50%RB | Back Face | 709 | 23.44 | 24.0 | 1.138 | 0.158 | 0.180 |
| | QPSK 10MHz 50%RB | Right Side | 709 | 23.44 | 24.0 | 1.138 | 0.071 | 0.081 |
| | QPSK 10MHz 50%RB | Top Side | 709 | 23.44 | 24.0 | 1.138 | 0.076 | 0.086 |
| | QPSK 10MHz 50%RB | Back Face | 710 | 23.79 | 24.0 | 1.050 | 0.193 | 0.203 |
| | QPSK 10MHz 50%RB | Back Face | 711 | 23.62 | 24.0 | 1.091 | 0.202 | 0.220 |

| LTE Band 38–Body SAR Test (Gap: 0mm) | | | | | | | | |
|--------------------------------------|---------------------------|--------------------|-----------|--------------------|-------------------|----------------|---------------|---------------------|
| Plot No. | Mode | Test Position Body | Frequency | Output Power (dBm) | Rated Limit (dBm) | Scaling Factor | SAR 1g (W/kg) | Scaled SAR1g (W/kg) |
| | Modulation, Bandwidth, RB | | MHz | | | | | |
| | QPSK 20MHz 1RB | Back Face | 2580.0 | 24.47 | 24.5 | 1.007 | 0.426 | 0.429 |
| | QPSK 20MHz 1RB | Right Side | 2580.0 | 24.47 | 24.5 | 1.007 | 0.134 | 0.135 |
| | QPSK 20MHz 1RB | Top Side | 2580.0 | 24.47 | 24.5 | 1.007 | 0.338 | 0.340 |
| | QPSK 20MHz 1RB | Back Face | 2595.0 | 24.38 | 24.5 | 1.028 | 0.409 | 0.420 |
| 12. | QPSK 20MHz 1RB | Back Face | 2610.0 | 24.11 | 24.5 | 1.094 | 0.428 | 0.468 |
| | QPSK 20MHz 50%RB | Back Face | 2580.0 | 24.47 | 24.5 | 1.007 | 0.320 | 0.322 |
| | QPSK 20MHz 50%RB | Right Side | 2580.0 | 24.47 | 24.5 | 1.007 | 0.114 | 0.115 |
| | QPSK 20MHz 50%RB | Top Side | 2580.0 | 24.47 | 24.5 | 1.007 | 0.225 | 0.227 |
| | QPSK 20MHz 50%RB | Back Face | 2595.0 | 24.38 | 24.5 | 1.028 | 0.302 | 0.310 |
| | QPSK 20MHz 50%RB | Back Face | 2610.0 | 24.11 | 24.5 | 1.094 | 0.330 | 0.361 |

| LTE Band 40(2305-2315MHz)–Body SAR Test (Gap: 0mm) | | | | | | | | |
|--|---------------------------|--------------------|-----------|--------------------|-------------------|----------------|---------------|---------------------|
| Plot No. | Mode | Test Position Body | Frequency | Output Power (dBm) | Rated Limit (dBm) | Scaling Factor | SAR 1g (W/kg) | Scaled SAR1g (W/kg) |
| | Modulation, Bandwidth, RB | | MHz | | | | | |
| 13. | QPSK 10MHz 1RB | Back Face | 2310 | 23.51 | 24.0 | 1.119 | 0.525 | 0.588 |
| | QPSK 10MHz 1RB | Right Side | 2310 | 23.51 | 24.0 | 1.119 | 0.169 | 0.189 |
| | QPSK 10MHz 1RB | Top Side | 2310 | 23.51 | 24.0 | 1.119 | 0.476 | 0.533 |
| | QPSK 10MHz 50%RB | Back Face | 2310 | 23.51 | 24.0 | 1.119 | 0.416 | 0.466 |
| | QPSK 10MHz 50%RB | Right Side | 2310 | 23.51 | 24.0 | 1.119 | 0.133 | 0.149 |
| | QPSK 10MHz 50%RB | Top Side | 2310 | 23.51 | 24.0 | 1.119 | 0.377 | 0.422 |

| LTE Band 40(2350-2360MHz)–Body SAR Test (Gap: 0mm) | | | | | | | | |
|--|---------------------------|--------------------|-----------|--------------------|-------------------|----------------|---------------|---------------------|
| Plot No. | Mode | Test Position Body | Frequency | Output Power (dBm) | Rated Limit (dBm) | Scaling Factor | SAR 1g (W/kg) | Scaled SAR1g (W/kg) |
| | Modulation, Bandwidth, RB | | MHz | | | | | |
| 14. | QPSK 10MHz 1RB | Back Face | 2355 | 23.06 | 23.5 | 1.107 | 0.402 | 0.445 |
| | QPSK 10MHz 1RB | Right Side | 2355 | 23.06 | 23.5 | 1.107 | 0.141 | 0.156 |
| | QPSK 10MHz 1RB | Top Side | 2355 | 23.06 | 23.5 | 1.107 | 0.383 | 0.424 |
| | QPSK 10MHz 50%RB | Back Face | 2355 | 23.06 | 23.5 | 1.107 | 0.323 | 0.357 |
| | QPSK 10MHz 50%RB | Right Side | 2355 | 23.06 | 23.5 | 1.107 | 0.118 | 0.131 |
| | QPSK 10MHz 50%RB | Top Side | 2355 | 23.06 | 23.5 | 1.107 | 0.311 | 0.344 |

| LTE Band 66–Body SAR Test (Gap: 0mm) | | | | | | | | |
|--------------------------------------|---------------------------|--------------------|-----------|--------------------|-------------------|----------------|---------------|---------------------|
| Plot No. | Mode | Test Position Body | Frequency | Output Power (dBm) | Rated Limit (dBm) | Scaling Factor | SAR 1g (W/kg) | Scaled SAR1g (W/kg) |
| | Modulation, Bandwidth, RB | | MHz | | | | | |
| | QPSK 20MHz 1RB | Back Face | 1720 | 23.64 | 24.0 | 1.086 | 0.812 | 0.882 |
| | QPSK 20MHz 1RB | Right Side | 1720 | 23.64 | 24.0 | 1.086 | 0.442 | 0.480 |
| | QPSK 20MHz 1RB | Top Side | 1720 | 23.64 | 24.0 | 1.086 | 0.592 | 0.643 |
| | QPSK 20MHz 1RB | Back Face | 1745 | 23.52 | 24.0 | 1.117 | 0.823 | 0.919 |
| 15. | QPSK 20MHz 1RB | Back Face | 1770 | 23.32 | 24.0 | 1.169 | 0.821 | 0.960 |
| | QPSK 20MHz 50%RB | Back Face | 1720 | 23.64 | 24.0 | 1.086 | 0.679 | 0.738 |
| | QPSK 20MHz 50%RB | Right Side | 1720 | 23.64 | 24.0 | 1.086 | 0.383 | 0.416 |
| | QPSK 20MHz 50%RB | Top Side | 1720 | 23.64 | 24.0 | 1.086 | 0.499 | 0.542 |
| | QPSK 20MHz 50%RB | Back Face | 1745 | 23.52 | 24.0 | 1.117 | 0.654 | 0.730 |
| | QPSK 20MHz 50%RB | Back Face | 1770 | 23.32 | 24.0 | 1.169 | 0.679 | 0.794 |

| WLAN 2.4GHz –Body SAR Test(Gap: 0mm) | | | | | | | | | |
|--------------------------------------|---------|--------------------|-----------|------|--------------------|-------------------|----------------|--------------|---------------------|
| Plot No. | Mode | Test Position Body | Frequency | | Output Power (dBm) | Rated Limit (dBm) | Scaling Factor | SAR1g (W/kg) | Scaled SAR1g (W/kg) |
| | | | CH. | MHz | | | | | |
| 16. | 802.11b | Back Face | 1 | 2412 | 15.58 | 16.0 | 1.102 | 0.454 | 0.500 |
| | 802.11b | Left Side | 1 | 2412 | 15.58 | 16.0 | 1.102 | 0.234 | 0.258 |
| | 802.11b | Bottom Side | 1 | 2412 | 15.58 | 16.0 | 1.102 | 0.289 | 0.318 |
| | 802.11b | Back Face | 6 | 2437 | 15.38 | 15.5 | 1.028 | 0.394 | 0.405 |
| | 802.11b | Back Face | 11 | 2462 | 14.49 | 14.5 | 1.002 | 0.459 | 0.460 |

| Bluetooth–Body SAR Test(Gap: 0mm) | | | | | | | | | |
|-----------------------------------|------|--------------------|-----------|------|--------------------|-------------------|----------------|--------------|---------------------|
| Plot No. | Mode | Test Position Body | Frequency | | Output Power (dBm) | Rated Limit (dBm) | Scaling Factor | SAR1g (W/kg) | Scaled SAR1g (W/kg) |
| | | | CH. | MHz | | | | | |
| 17. | GFSK | Back Face | 0 | 2402 | 7.77 | 8.0 | 1.054 | 0.145 | 0.153 |
| | GFSK | Left Side | 0 | 2402 | 7.77 | 8.0 | 1.054 | 0.066 | 0.070 |
| | GFSK | Bottom Side | 0 | 2402 | 7.77 | 8.0 | 1.054 | 0.085 | 0.090 |
| | GFSK | Back Face | 39 | 2441 | 7.77 | 8.0 | 1.054 | 0.114 | 0.120 |
| | GFSK | Back Face | 78 | 2480 | 7.77 | 8.0 | 1.054 | 0.138 | 0.146 |

Repeated SAR

| WCDMA Band 2 – Body SAR Test (Gap: 0mm) | | | | | | | | |
|---|-----------------------|-----------|--------|-----------------|--------------|---|-------|---|
| Mode | Test Position Body | Frequency | | SAR1g (W/kg) | Repeated SAR | | Ratio | |
| | | CH. | MHz | | 1 | 2 | 1 | 2 |
| RMC 12.2k | Back Face | 9538 | 1907.6 | 0.804 | 0.786 | / | 1.023 | / |
| RMC 12.2k | Back Face | 9262 | 1852.4 | 0.819 | 0.802 | / | 1.021 | / |

| WCDMA Band 4 – Body SAR Test (Gap: 0mm) | | | | | | | | |
|---|-----------------------|-----------|--------|-----------------|--------------|---|-------|---|
| Mode | Test Position Body | Frequency | | SAR1g (W/kg) | Repeated SAR | | Ratio | |
| | | CH. | MHz | | 1 | 2 | 1 | 2 |
| RMC 12.2k | Back Face | 1312 | 1712.4 | 0.858 | 0.836 | / | 1.026 | / |
| RMC 12.2k | Back Face | 1412 | 1732.4 | 0.850 | 0.823 | / | 1.033 | / |
| RMC 12.2k | Back Face | 1513 | 1752.6 | 0.845 | 0.819 | / | 1.032 | / |

| LTE Band 2–Body SAR Test (Gap: 0mm) | | | | | | | | |
|-------------------------------------|-----------------------|-----------|-----------------|--------------|---|-------|---|--|
| Mode | Test Position Body | Frequency | SAR1g (W/kg) | Repeated SAR | | Ratio | | |
| | | MHz | | 1 | 2 | 1 | 2 | |
| QPSK 20MHz 1RB | Back Face | 1880 | 0.854 | 0.828 | / | 1.031 | / | |

| LTE Band 4–Body SAR Test (Gap: 0mm) | | | | | | | | |
|-------------------------------------|-----------------------|-----------|-----------------|--------------|---|-------|---|--|
| Mode | Test Position Body | Frequency | SAR1g (W/kg) | Repeated SAR | | Ratio | | |
| | | MHz | | 1 | 2 | 1 | 2 | |
| QPSK 20MHz 1RB | Back Face | 1720 | 0.812 | 0.798 | / | 1.018 | / | |
| QPSK 20MHz 1RB | Back Face | 1732.5 | 0.836 | 0.806 | / | 1.037 | / | |
| QPSK 20MHz 1RB | Back Face | 1745 | 0.834 | 0.811 | / | 1.028 | / | |

| LTE Band 66–Body SAR Test (Gap: 0mm) | | | | | | | | |
|--------------------------------------|-----------------------|-----------|-----------------|--------------|---|-------|---|--|
| Mode | Test Position Body | Frequency | SAR1g (W/kg) | Repeated SAR | | Ratio | | |
| | | MHz | | 1 | 2 | 1 | 2 | |
| QPSK 20MHz 1RB | Back Face | 1720 | 0.812 | 0.786 | / | 1.033 | / | |
| QPSK 20MHz 1RB | Back Face | 1745 | 0.823 | 0.783 | / | 1.051 | / | |
| QPSK 20MHz 1RB | Back Face | 1770 | 0.821 | 0.792 | / | 1.037 | / | |

Remark:

- 1) Per KDB 447498 D01 v06, if the highest output channel SAR for each exposure position ≤ 0.8 W/kg other channels SAR tests are not necessary.
- 2) Repeated measurement is not required when the original highest measured SAR is < 0.80 W/kg; steps 2) through 4) do not apply.
- 3) When the original highest measured SAR is ≥ 0.80 W/kg, repeat that measurement once.
- 4) Perform a second repeated measurement only if the ratio of largest to smallest SAR for the original and first repeated measurements is > 1.20 or when the original or repeated measurement is ≥ 1.45 W/kg ($\sim 10\%$ from the 1-g SAR limit).

Reference No.: WTX22X12243880W

5) Perform a third repeated measurement only if the original, first or second repeated measurement is ≥ 1.5 W/kg and the ratio of largest to smallest SAR for the original, first and second repeated measurements is > 1.20 .

9.3 Simultaneous Multi-band Transmission SAR Analysis

List of Mode for Simultaneous Multi-band Transmission

| No. | Configurations | Body SAR |
|-----|--|----------|
| 1 | GSM(Voice/Data) + WLAN(2.4GHz)(Data) + NFC(Data) | Yes |
| 2 | WCDMA (Data)+ WLAN (2.4GHz)(Data) + NFC(Data) | Yes |
| 3 | LTE(Data) + WLAN (2.4GHz)(Data) + NFC(Data) | Yes |
| 4 | GSM(Voice/Data) + Bluetooth(Data) + NFC(Data) | Yes |
| 5 | WCDMA (Data) + Bluetooth(Data) + NFC(Data) | Yes |
| 6 | LTE(Data) + Bluetooth(Data) + NFC(Data) | Yes |

Remark:

1. GSM, WCDMA and LTE share the same antenna, and cannot transmit simultaneously.
2. WLAN and Bluetooth share the same antenna, and cannot transmit simultaneously.
3. According to the KDB 447498 D01 v06, when standalone SAR test exclusion applies to an antenna that transmits simultaneously with other antennas, the standalone SAR must be estimated according to following to determine simultaneous transmission SAR test exclusion:

$(\text{max. power of channel, including tune-up tolerance, mW}) / (\text{min. test separation distance, mm}) \cdot [\sqrt{f(\text{GHz})} / x]$
W/kg for test separation distances ≤ 50 mm;

where $x = 7.5$ for 1-g SAR, and $x = 18.75$ for 10-g SAR.

For simultaneous transmission analysis, NFC SAR is estimated per KDB 447498 D01 v06 as below:

NFC:

| Tune-Up Power (dBm) | Max. Power (mW) | Distance (mm) | Frequency (GHz) | X | SAR(1g) 5mm |
|---------------------|-----------------|---------------|-----------------|-----|-------------|
| -47.0 | 0.00002 | 5/10 | 0.01356 | 7.5 | 0.000001 |

| Position | WWAN | | WLAN(2.4GHz) | Summed SAR (W/kg) |
|-------------|-------|-------------------|-------------------|-------------------|
| | Band | Scaled SAR (W/kg) | Scaled SAR (W/kg) | |
| Back | GSM | 0.642 | 0.500 | 1.142 |
| Right side | GSM | 0.464 | -- | 0.464 |
| Left side | GSM | -- | 0.258 | 0.258 |
| Top side | GSM | 0.343 | -- | 0.343 |
| Bottom side | GSM | -- | 0.318 | 0.318 |
| Back | WCDMA | 0.908 | 0.500 | 1.408 |
| Right side | WCDMA | 0.589 | -- | 0.589 |
| Left side | WCDMA | -- | 0.258 | 0.258 |
| Top side | WCDMA | 0.361 | -- | 0.361 |
| Bottom side | WCDMA | -- | 0.318 | 0.318 |
| Back | LTE | 1.008 | 0.500 | 1.508 |
| Right side | LTE | 0.627 | -- | 0.627 |
| Left side | LTE | -- | 0.258 | 0.258 |
| Top side | LTE | 0.685 | -- | 0.685 |
| Bottom side | LTE | -- | 0.318 | 0.318 |

| Position | WWAN | | Bluetooth | Summed SAR (W/kg) |
|-------------|-------|-------------------|-------------------|-------------------|
| | Band | Scaled SAR (W/kg) | Scaled SAR (W/kg) | |
| Back | GSM | 0.642 | 0.153 | 0.795 |
| Right side | GSM | 0.464 | -- | 0.464 |
| Left side | GSM | -- | 0.070 | 0.070 |
| Top side | GSM | 0.343 | -- | 0.343 |
| Bottom side | GSM | -- | 0.090 | 0.090 |
| Back | WCDMA | 0.908 | 0.153 | 1.061 |
| Right side | WCDMA | 0.589 | -- | 0.589 |
| Left side | WCDMA | -- | 0.070 | 0.070 |
| Top side | WCDMA | 0.361 | -- | 0.361 |
| Bottom side | WCDMA | -- | 0.090 | 0.090 |
| Back | LTE | 1.008 | 0.153 | 1.161 |
| Right side | LTE | 0.627 | -- | 0.627 |
| Left side | LTE | -- | 0.070 | 0.070 |
| Top side | LTE | 0.685 | -- | 0.685 |
| Bottom side | LTE | -- | 0.090 | 0.090 |

Note:

1. NFC output power is so low and SAR is negligible.

10. Measurement Uncertainty

10.1 Uncertainty for SAR Test

| a | b | c | d | e= f(d,k) | f | g | h= c*f/e | i= c*g/e | k |
|---|-------|---------------|----------------|-----------|-------------------|-------------------|----------------|-----------------|----|
| Uncertainty Component | Sec. | Tol (+- %) | Prob. Dist. | Div. | Ci (1g) | Ci (10g) | 1g Ui (+-%) | 10g Ui (+-%) | Vi |
| Measurement System | | | | | | | | | |
| Probe calibration | E.2.1 | 7.0 | N | | 1 | 1 | 7.00 | 7.00 | |
| Axial Isotropy | E.2.2 | 2.5 | R | | $(1_{-Cp})^{1/2}$ | $(1_{-Cp})^{1/2}$ | 1.02 | 1.02 | |
| Hemispherical Isotropy | E.2.2 | 4.0 | R | | $(Cp)^{1/2}$ | $(Cp)^{1/2}$ | 1.63 | 1.63 | |
| Boundary effect | E.2.3 | 1.0 | R | | 1 | 1 | 0.58 | 0.58 | |
| Linearity | E.2.4 | 5.0 | R | | 1 | 1 | 2.89 | 2.89 | |
| System detection limits | E.2.5 | 1.0 | R | | 1 | 1 | 0.58 | 0.58 | |
| Readout Electronics | E.2.6 | 0.02 | N | | 1 | 1 | 0.02 | 0.02 | |
| Reponse Time | E.2.7 | 3.0 | R | | 1 | 1 | 1.73 | 1.73 | |
| Integration Time | E.2.8 | 2.0 | R | | 1 | 1 | 1.15 | 1.15 | |
| RF ambient Conditions - | E.6.1 | 0 | R | | 1 | 1 | 1.73 | 1.73 | |
| RF ambient Conditions - Reflections | E.6.1 | 0 | R | | 1 | 1 | 1.73 | 1.73 | |
| Probe positioner Mechanical Tolerance | E.6.2 | 2.0 | R | | 1 | 1 | 1.15 | 1.15 | |
| Probe positioning with respect to Phantom Shell | E.6.3 | 0.05 | R | | 1 | 1 | 0.03 | 0.03 | |
| Extrapolation, interpolation and integration Algorithms for Max. SAR Evaluation | E.5 | 5.0 | R | | 1 | 1 | 2.89 | 2.89 | |
| Test Sample Related | | | | | | | | | |
| Test sample positioning | E.4.2 | 0.03 | N | | 1 | 1 | 0.03 | 0.03 | |
| Device Holder Uncertainty | E.4.1 | 5.00 | N | | 1 | 1 | 5.00 | 5.00 | |
| Output power Variation - SAR drift measurement | E.2.9 | 12.02 | R | | 1 | 1 | 6.94 | 6.94 | |
| SAR scaling | E6.5 | 0.0 | R | | 1 | 1 | 0.0 | 0.0 | |
| Phantom and Tissue Parameters | | | | | | | | | |
| Phantom Uncertainty (Shape and thickness tolerances) | E.3.1 | 0.05 | R | | 1 | 1 | 0.03 | 0.03 | |

| | | | | | | | | | |
|---|-------|-------|-----|--|------|------|-------|-------|--|
| Uncertainty in SAR correction for deviations in permittivity and conductivity | E3.2 | 1.9 | R | | 1 | 0.84 | 1.10 | 0.90 | |
| Liquid conductivity - deviation from target value | E.3.2 | 5.00 | R | | 0.64 | 0.43 | 1.85 | 1.24 | |
| Liquid conductivity - measurement uncertainty | E.3.3 | 5.00 | N | | 0.64 | 0.43 | 3.20 | 2.15 | |
| Liquid permittivity - deviation from target value | E.3.2 | 0.37 | R | | 0.6 | 0.49 | 0.13 | 0.10 | |
| Liquid permittivity - measurement uncertainty | E.3.3 | 10.00 | N | | 0.6 | 0.49 | 6.00 | 4.90 | |
| Combined Standard Uncertainty | | | RSS | | | | 10.20 | 10.00 | |
| Expanded Uncertainty (95% Confidence interval) | | | K=2 | | | | 20.40 | 20.00 | |

Annex A. Plots of System Performance Check

MEASUREMENT 1

Type: Validation measurement (Fast, 75.00 %)

Date of measurement: 2023-01-10

Measurement duration: 7 minutes 21 seconds

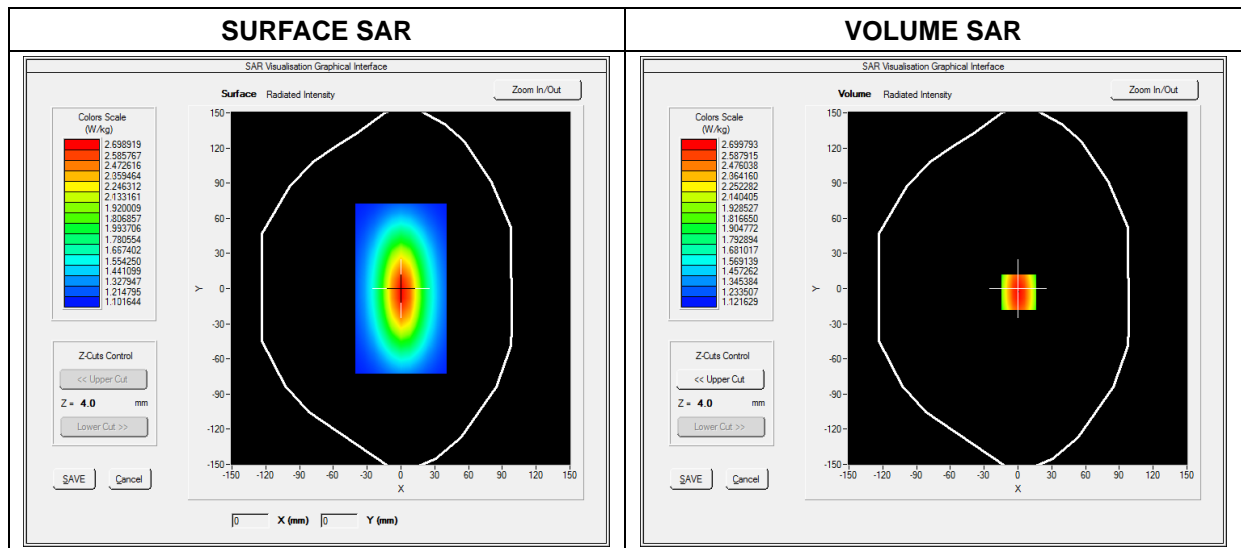
E-field Probe: SSE2 - SN 18/21 EPGO356; ConvF: 1.76; Calibrated: 2022-07-08

A. Experimental conditions

| | |
|------------------------|----------------------|
| Area Scan | dx=8mm dy=8mm |
| Zoom Scan | dx=5mm dy=5mm dz=4mm |
| Phantom | Validation plane |
| Device Position | Dipole |
| Band | CW750 |
| Signal | Duty Cycle 1:1 |

B. SAR Measurement Results

| | |
|--|------------|
| Frequency (MHz) | 750.000000 |
| Relative Permittivity (real part) | 54.740282 |
| Conductivity (S/m) | 0.951354 |
| Power Variation (%) | 1.032654 |
| Ambient Temperature | 22.5 |
| Liquid Temperature | 22.5 |

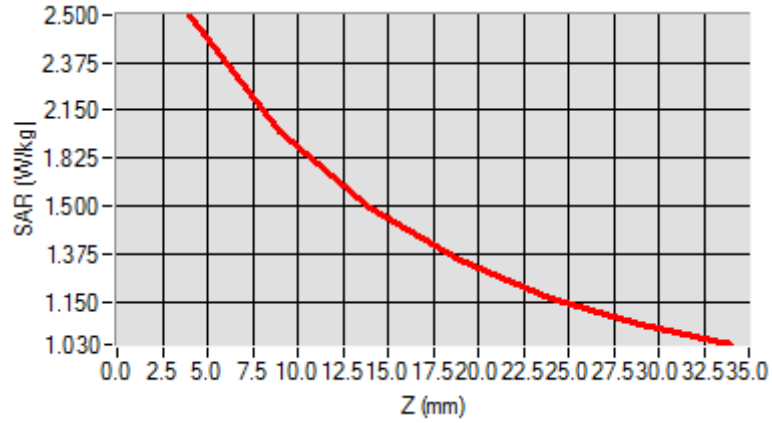


Maximum location: X=0.00, Y=0.00

| | |
|----------------|----------|
| SAR 10g (W/Kg) | 1.342744 |
| SAR 1g (W/Kg) | 2.064534 |

Z Axis Scan

| Z (mm) | 0.00 | 4.00 | 9.00 | 14.00 | 19.00 | 24.00 | 29.00 |
|------------|--------|--------|--------|--------|--------|--------|--------|
| SAR (W/Kg) | 0.0000 | 2.3634 | 1.8023 | 1.4523 | 1.2514 | 1.1005 | 1.0245 |



| 3D screen shot | Hot spot position |
|----------------|-------------------|
| | |

MEASUREMENT 2

Type: Validation measurement (Fast, 75.00 %)

Date of measurement: 2023-01-10

Measurement duration: 12 minutes 21 seconds

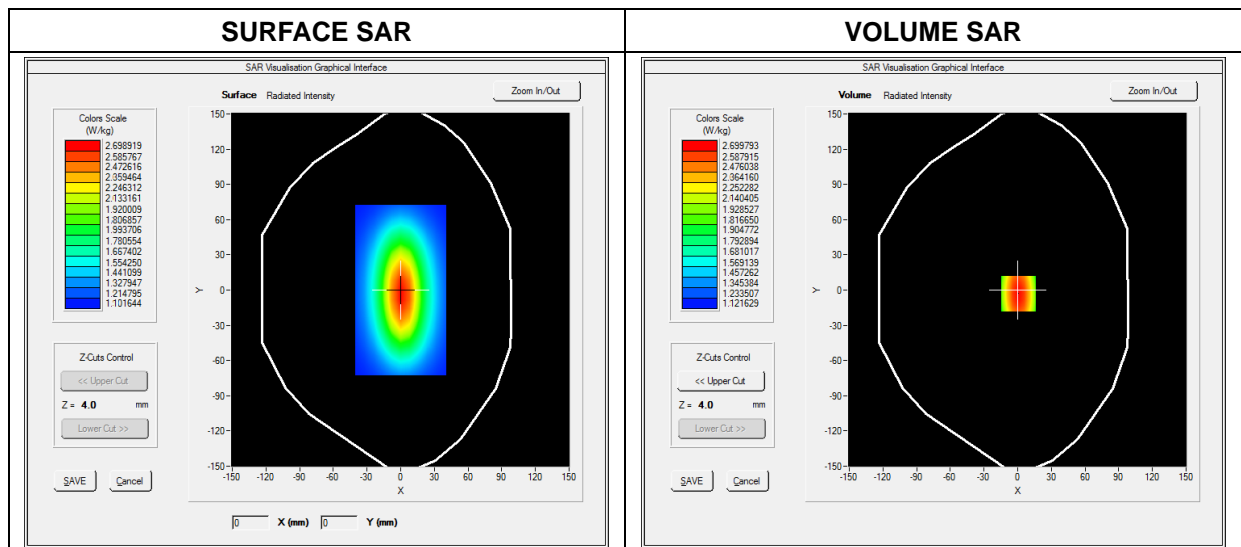
E-field Probe: SSE2 - SN 18/21 EPGO356; ConvF: 1.78; Calibrated: 2022-07-08

A. Experimental conditions

| | |
|------------------------|----------------------|
| Area Scan | dx=8mm dy=8mm |
| Zoom Scan | dx=5mm dy=5mm dz=4mm |
| Phantom | Validation plane |
| Device Position | Dipole |
| Band | CW835 |
| Signal | Duty Cycle 1:1 |

B. SAR Measurement Results

| | |
|--|------------|
| Frequency (MHz) | 835.000000 |
| Relative Permittivity (real part) | 56.332454 |
| Conductivity (S/m) | 0.961645 |
| Power Variation (%) | 1.453654 |
| Ambient Temperature | 22.5 |
| Liquid Temperature | 22.5 |

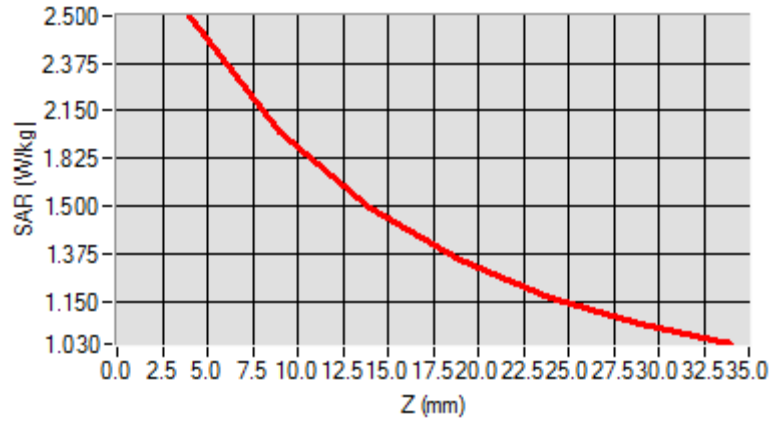


Maximum location: X=0.00, Y=0.00

| | |
|----------------|----------|
| SAR 10g (W/Kg) | 1.471263 |
| SAR 1g (W/Kg) | 2.401250 |

Z Axis Scan

| Z (mm) | 0.00 | 4.00 | 9.00 | 14.00 | 19.00 | 24.00 | 29.00 |
|------------|--------|--------|--------|--------|--------|--------|--------|
| SAR (W/Kg) | 0.0000 | 2.4900 | 1.8942 | 1.4811 | 1.3541 | 1.1123 | 1.0539 |



| 3D screen shot | Hot spot position |
|----------------|-------------------|
| | |

MEASUREMENT 3

Type: Validation measurement (Fast, 75.00 %)

Date of measurement: 2023-01-11

Measurement duration: 12 minutes 21 seconds

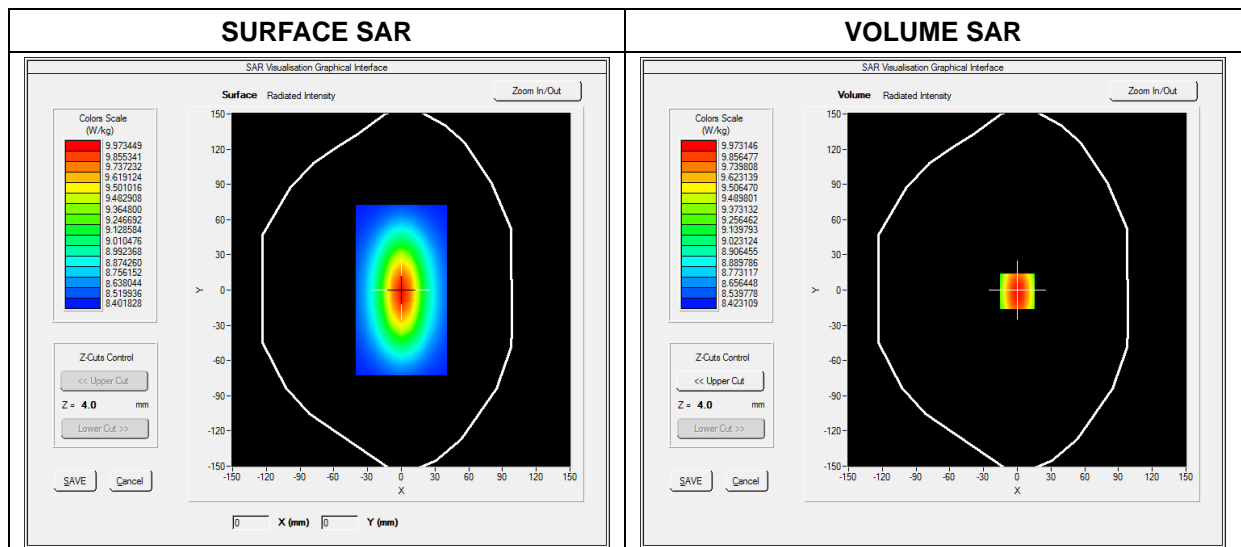
E-field Probe: SSE2 - SN 18/21 EPGO356; ConvF: 2.15; Calibrated: 2022-07-08

A. Experimental conditions

| | |
|------------------------|------------------------|
| Area Scan | dx=8mm dy=8mm |
| Zoom Scan | dx=5mm dy=5mm dz=4mm |
| Phantom | Validation plane |
| Device Position | Dipole |
| Band | CW1800 |
| Signal | CW (Crest factor: 1.0) |

B. SAR Measurement Results

| | |
|--|-------------|
| Frequency (MHz) | 1800.000000 |
| Relative Permittivity (real part) | 54.773541 |
| Conductivity (S/m) | 54.762509 |
| Power Variation (%) | 1.123236 |
| Ambient Temperature | 22.3 |
| Liquid Temperature | 22.3 |

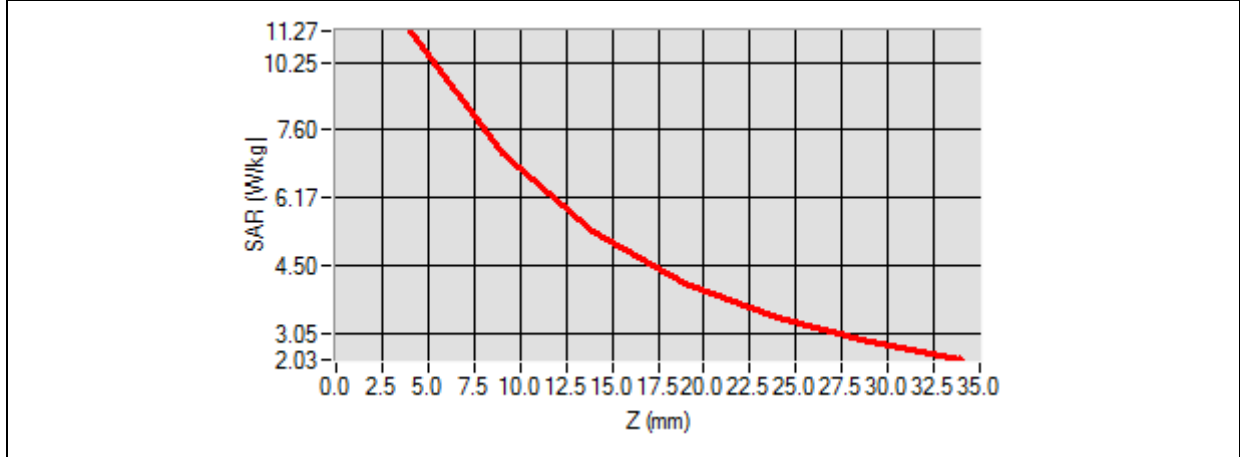


Maximum location: X=0.00, Y=0.00

| | |
|-----------------------|-----------------|
| SAR 10g (W/Kg) | 5.001252 |
| SAR 1g (W/Kg) | 9.701250 |

Z Axis Scan

| Z (mm) | 0.00 | 4.00 | 9.00 | 14.00 | 19.00 | 24.00 | 29.00 |
|-------------------|---------------|----------------|---------------|---------------|--------------|---------------|---------------|
| SAR (W/Kg) | 0.0000 | 10.3455 | 7.1125 | 5.1026 | 3.425 | 3.0242 | 2.1125 |



| 3D screen shot | Hot spot position |
|---|---|
| <p>A 3D perspective view of a grey, L-shaped device. A rectangular area on the inner surface is highlighted with a color-coded heatmap, showing a central red/orange region (high SAR) transitioning to green and blue (low SAR) towards the edges.</p> | <p>A 2D vertical heatmap showing a central, vertically-oriented oval of high intensity (red/orange) surrounded by concentric rings of decreasing intensity (yellow, green, cyan, blue).</p> |