

EXHIBIT 3 - EUT INTERNAL PHOTOGRAPHS

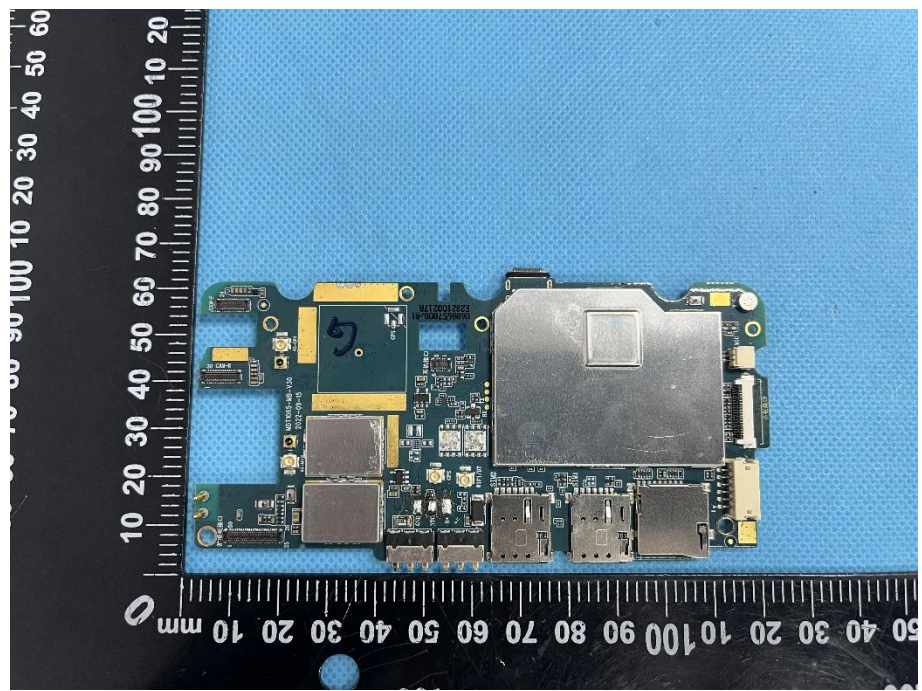
EUT Housing and Board View 1



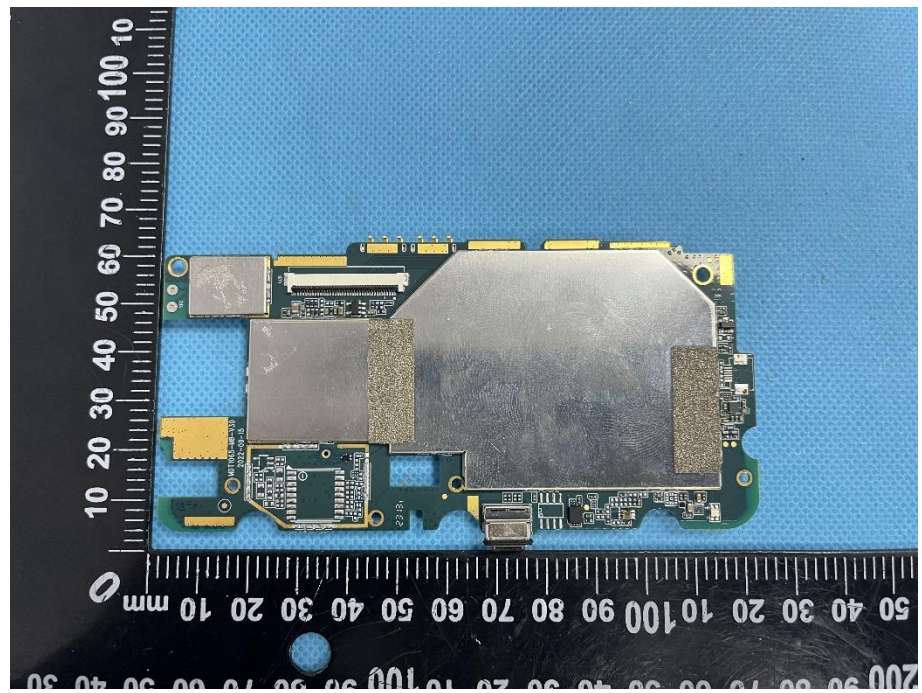
EUT Housing and Board View 2



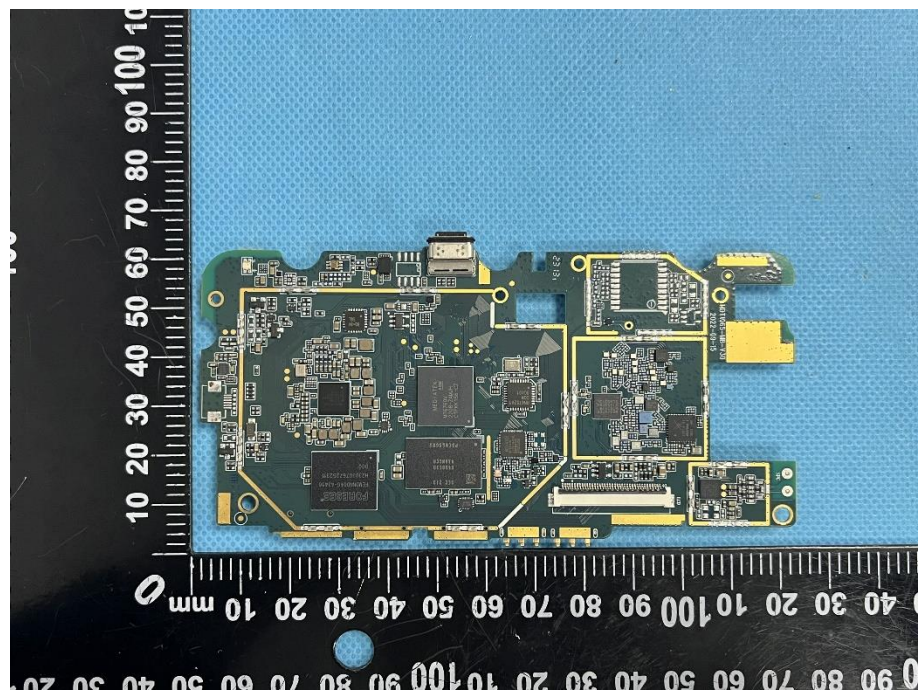
**Solder
Board-Component
View 1**



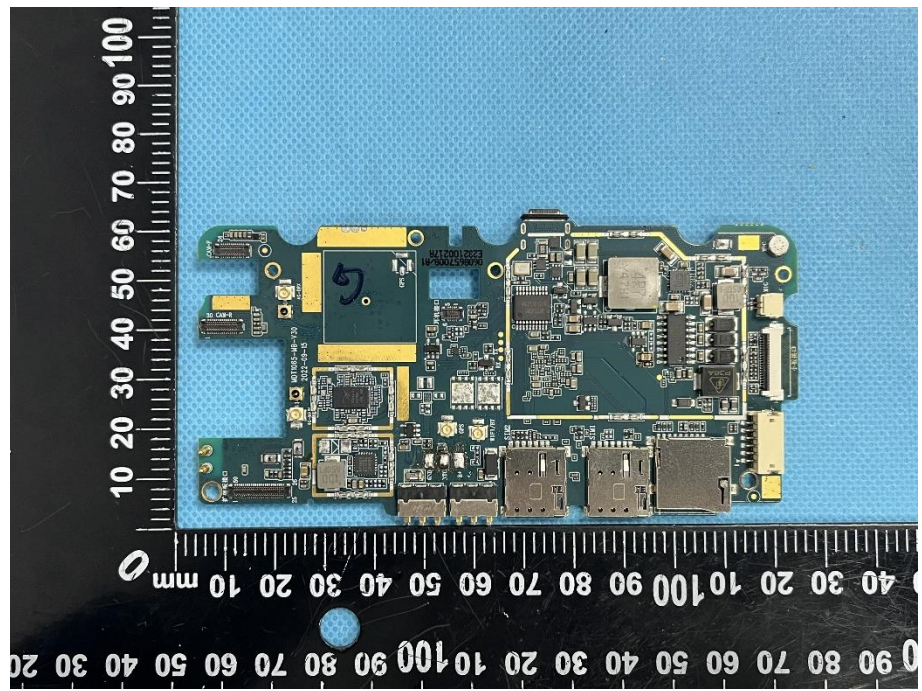
**Solder
Board-Component
View 2**



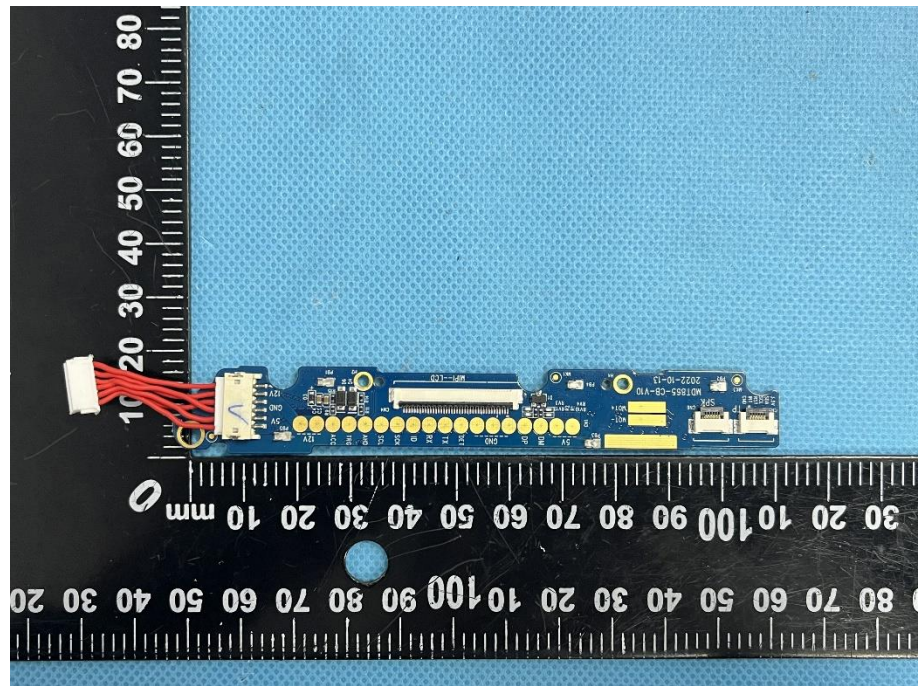
**Solder
Board-Component
View 3**



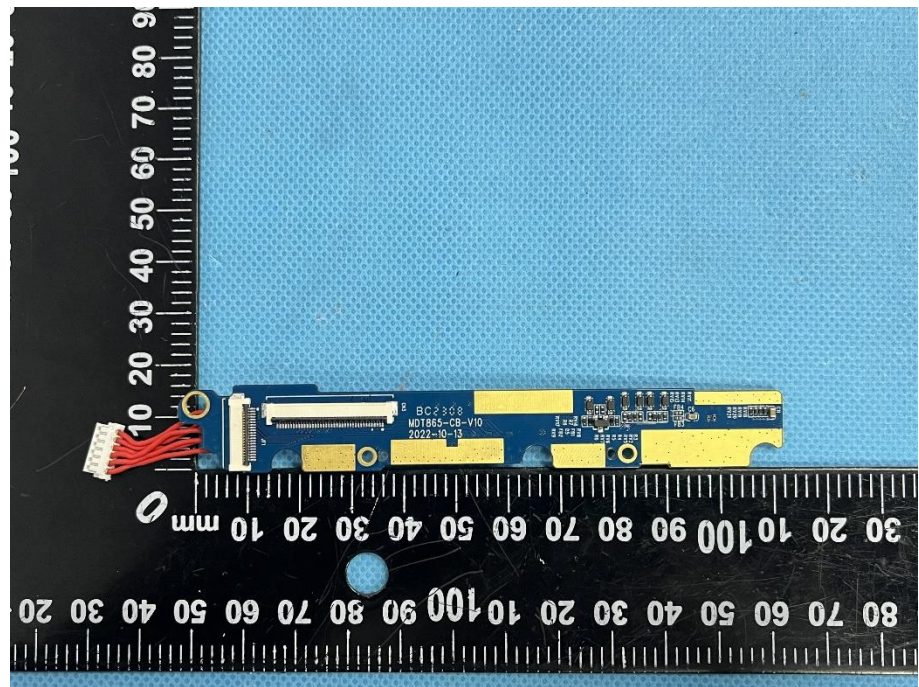
**Solder
Board-Component
View 4**



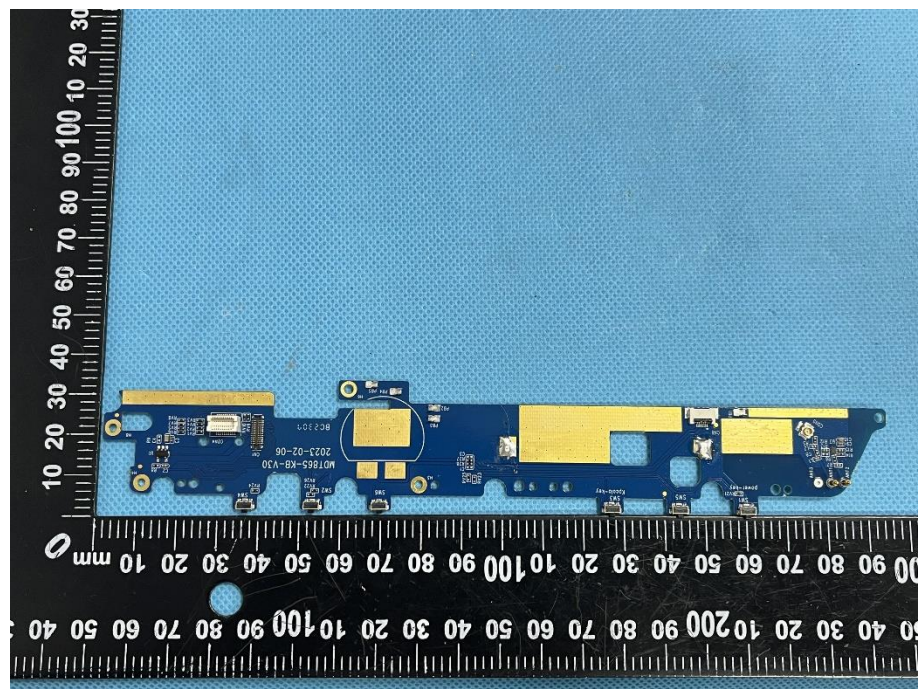
**Solder
Board-Component
View 5**



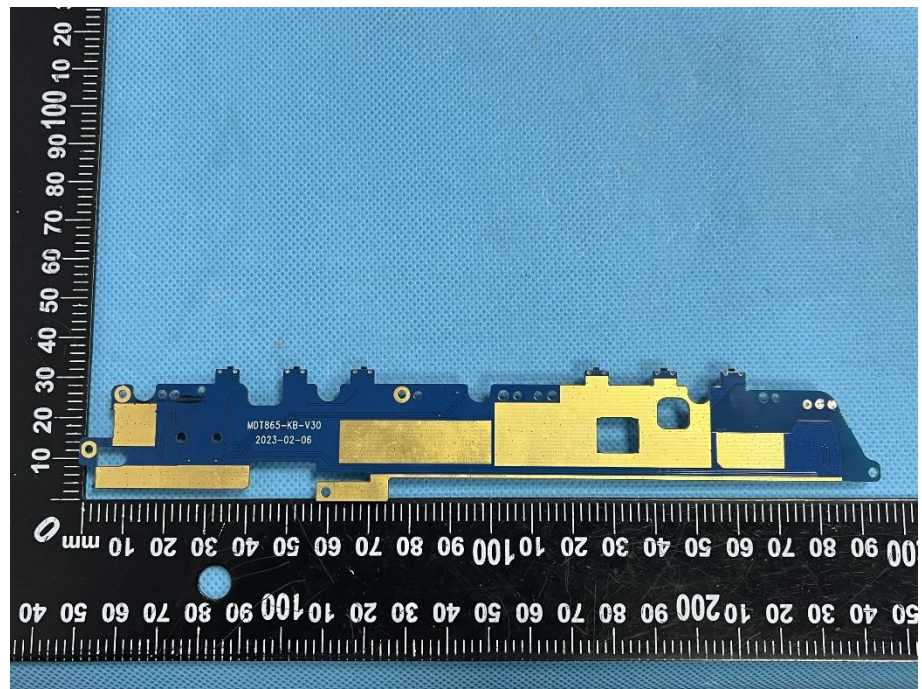
**Solder
Board-Component
View 6**

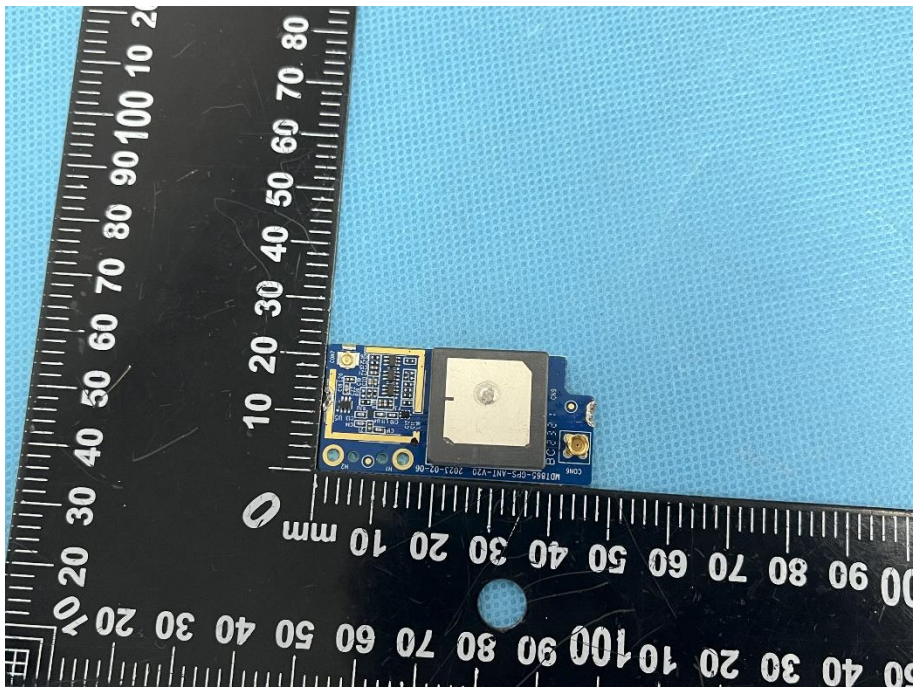
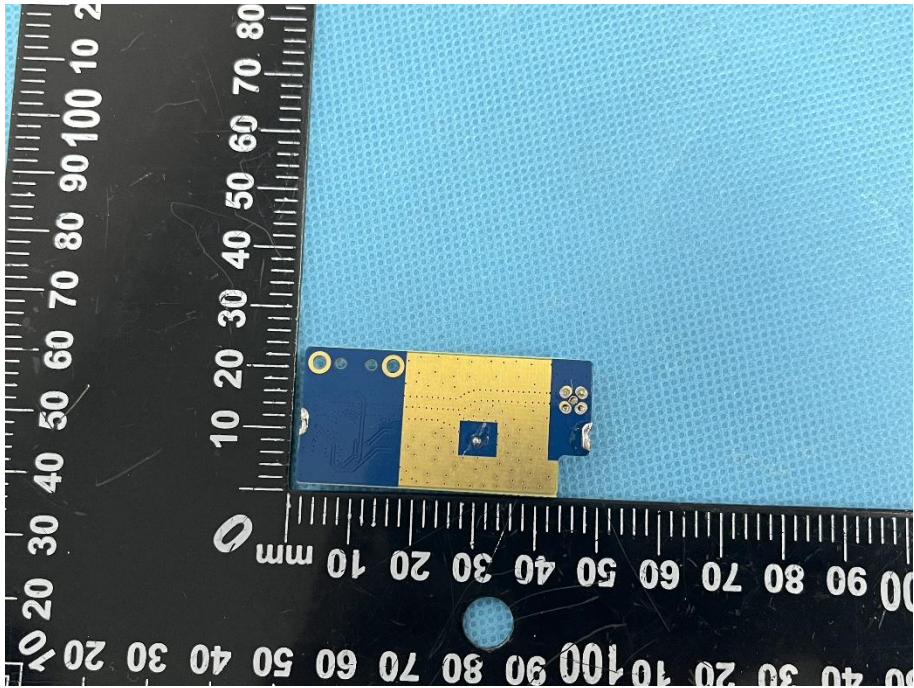


**Solder
Board-Component
View 7**

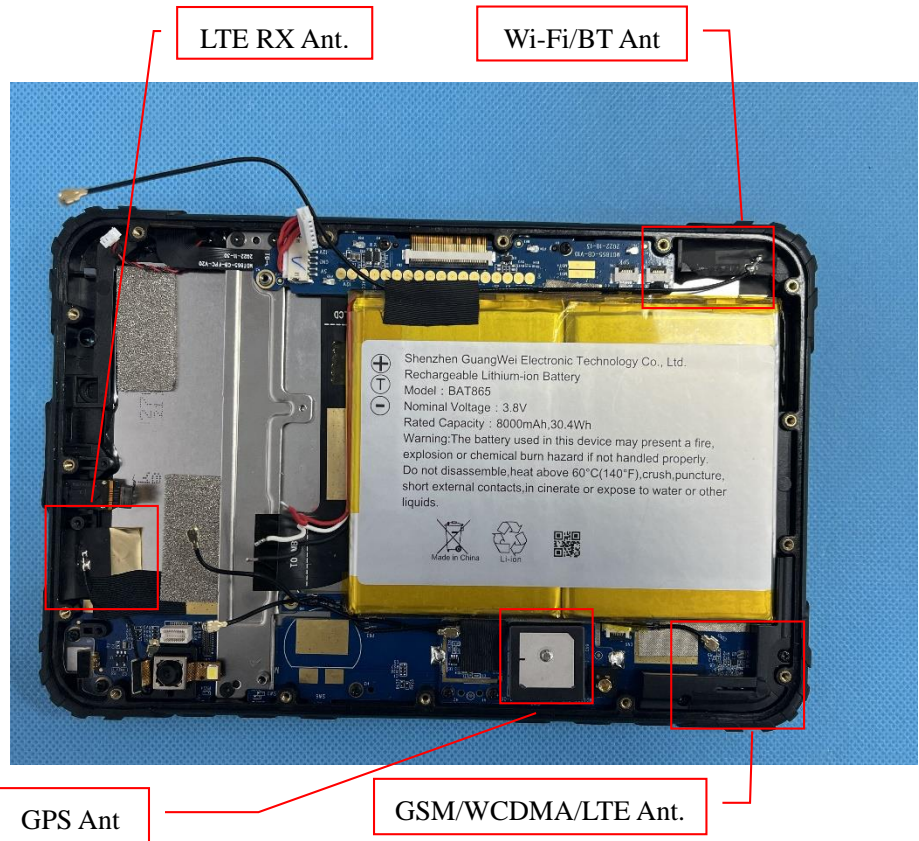


**Solder
Board-Component
View 8**



| | |
|--|--|
| <p>Solder Board-Component View 9</p> |  A photograph of a blue printed circuit board (PCB) component with a central square gold pad. The component is placed on a black ruler with white markings for scale. The ruler shows measurements in millimeters, with the component's length being approximately 40 mm. The background is a light blue textured surface. |
| <p>Solder Board-Component View 10</p> |  A photograph of the same blue PCB component from a different perspective. It shows a yellow rectangular area on the board, likely a solder mask or a specific layer. The component is again placed on a black ruler for scale, showing a length of about 40 mm. The background is the same light blue textured surface. |

Antenna View 1



Antenna View 2

