

Annex C. EUT Photos

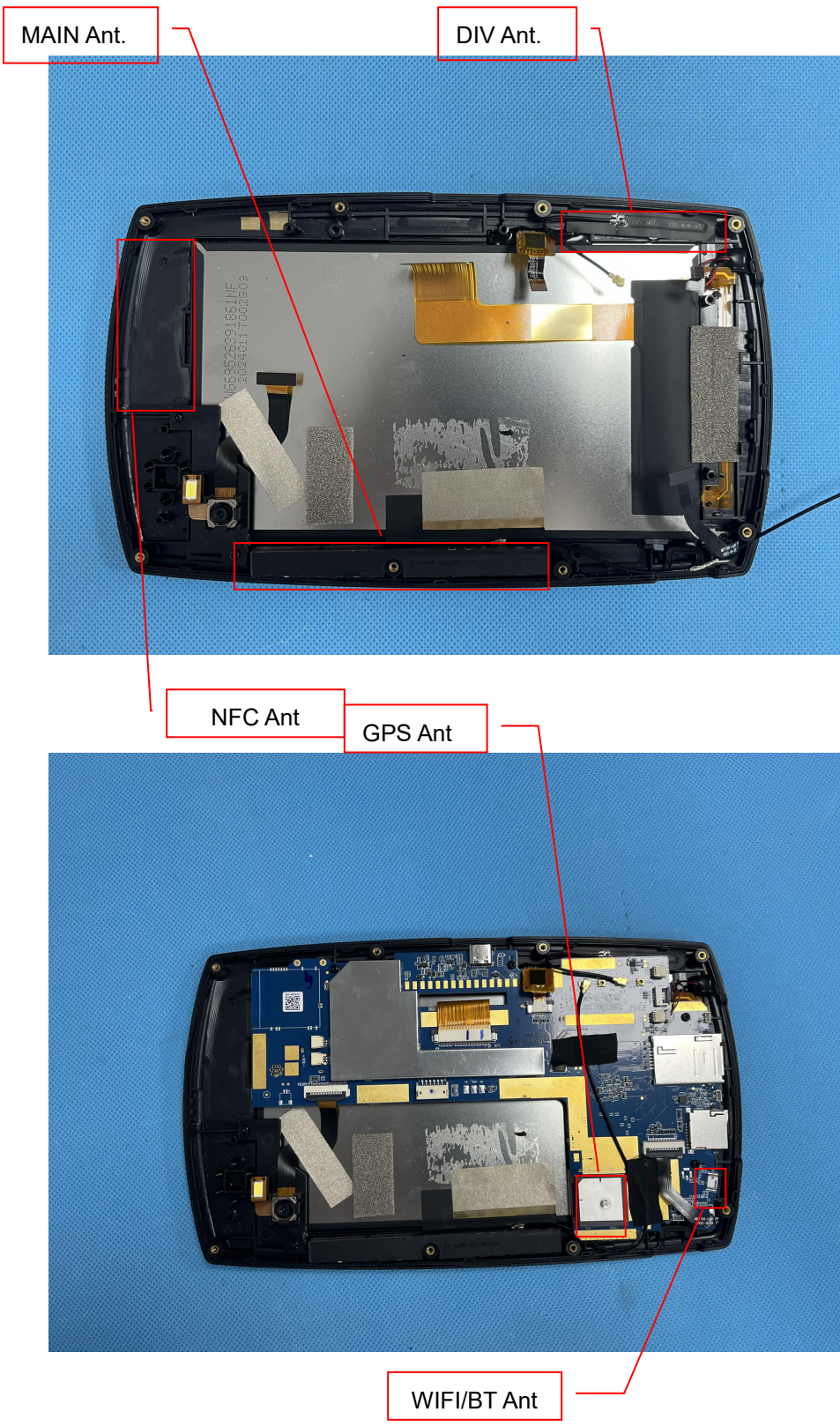
EUT View 1



EUT View 2



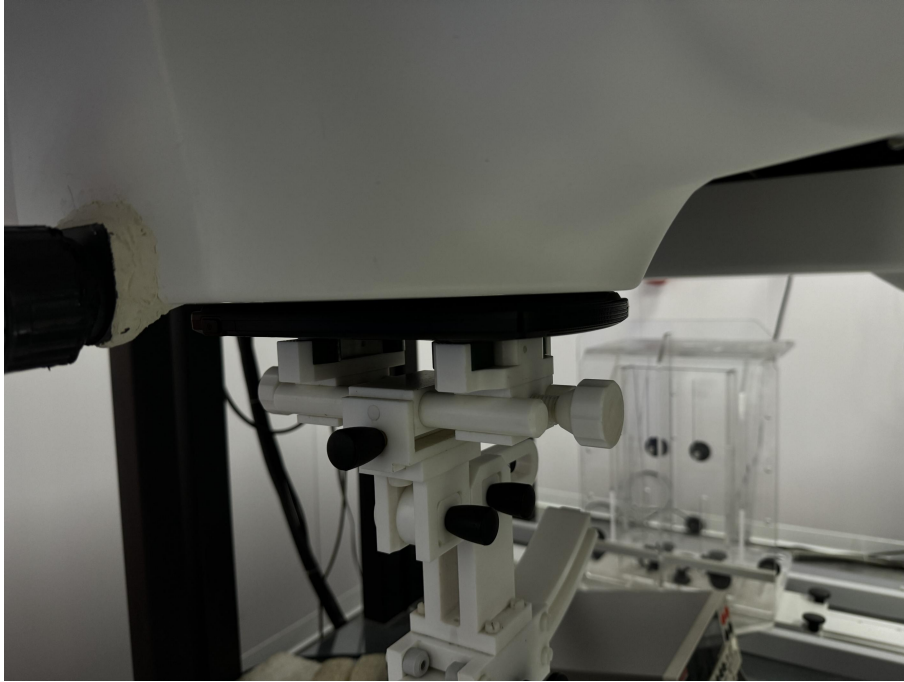
Antenna View



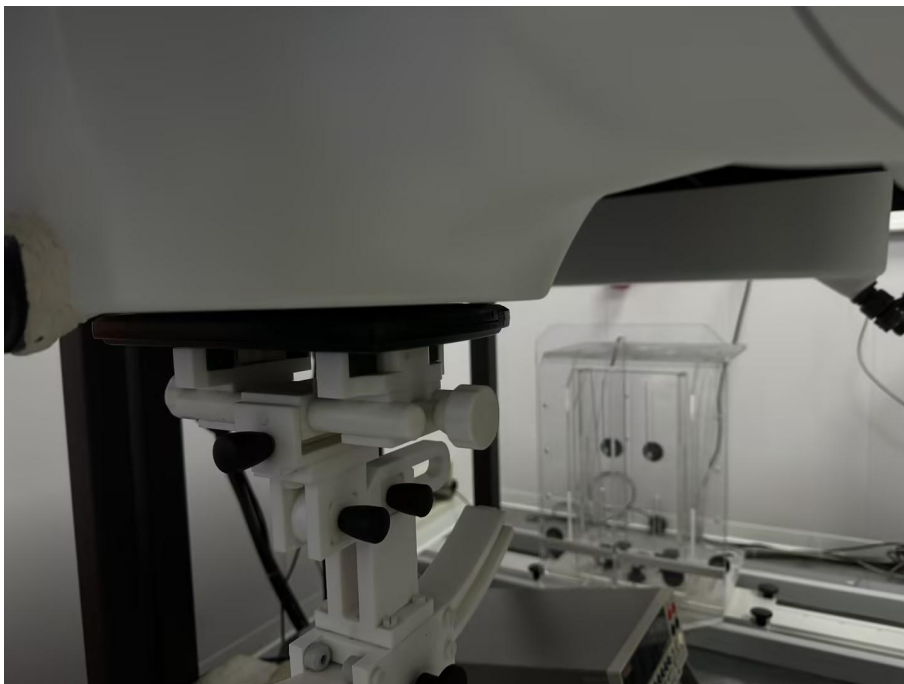
Annex D. Test Setup Photos

Body mode Exposure Conditions
Test distance: 0mm

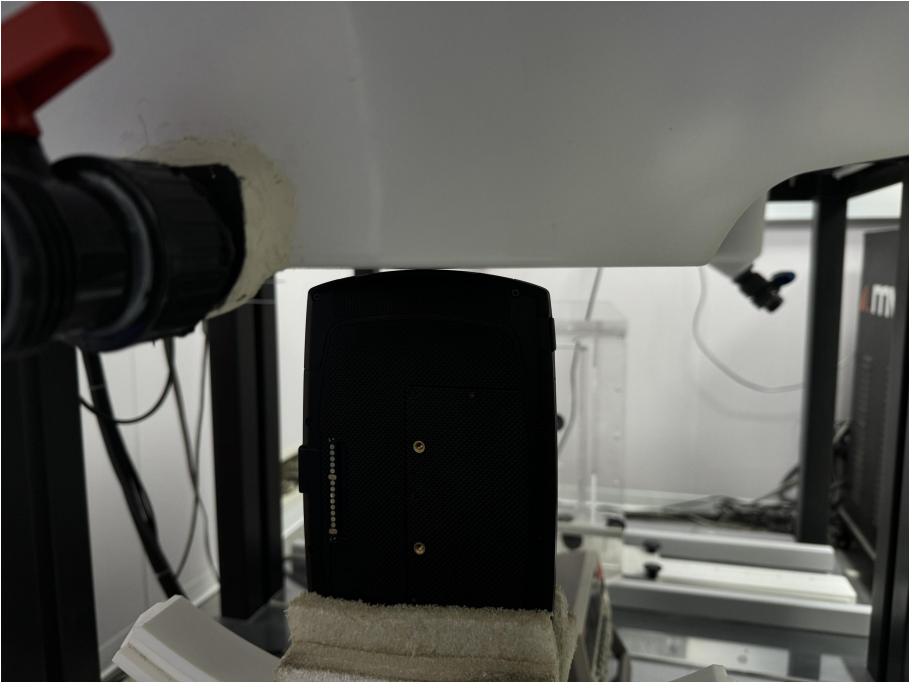
Body Front



Body Back



Body Right



Body Top



Annex E. Calibration Certificate

Please refer to the exhibit for the calibration certificate

******* END OF REPORT *******