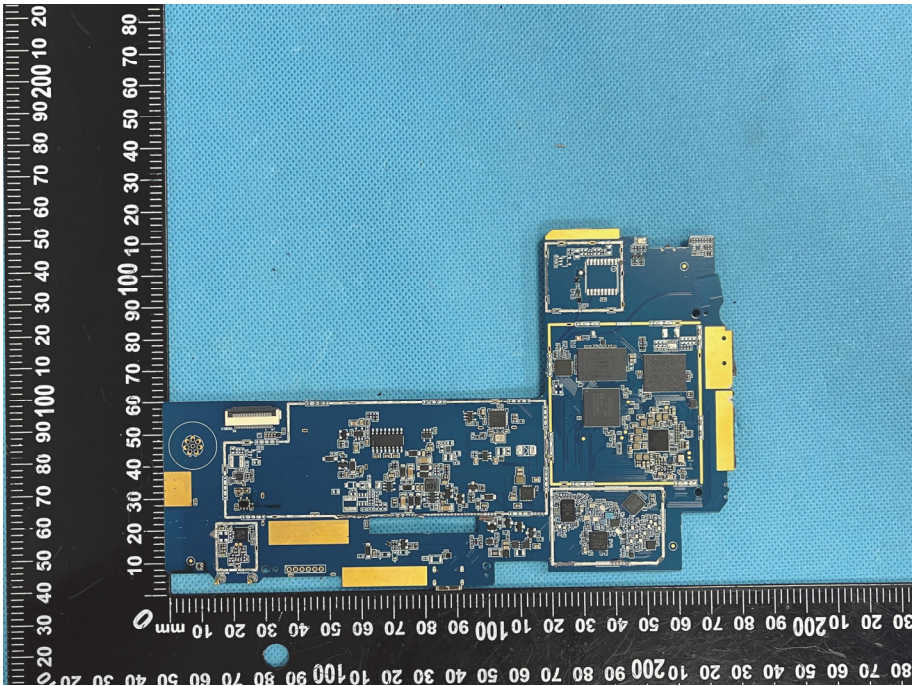
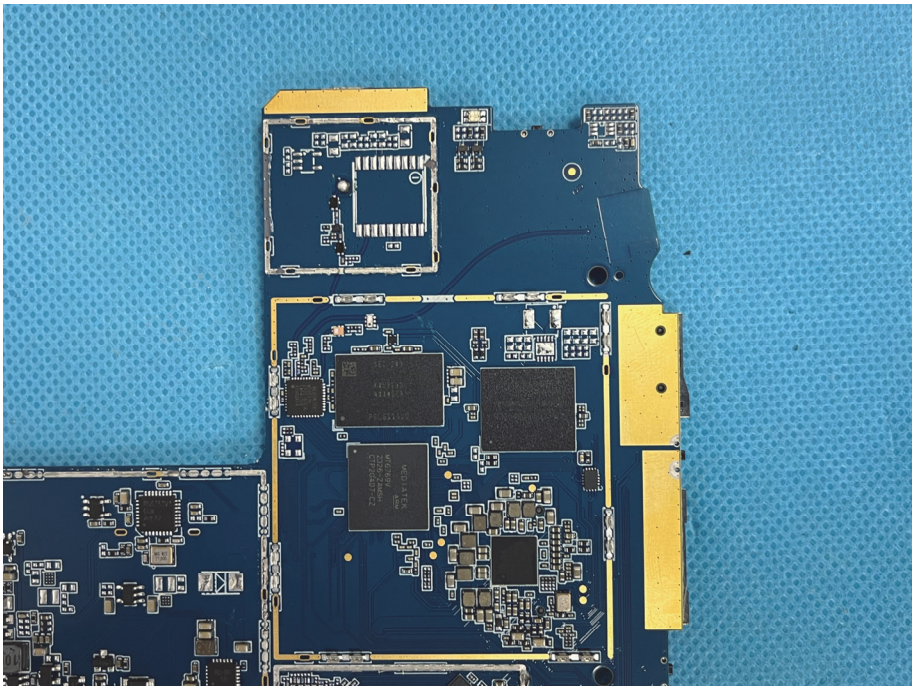
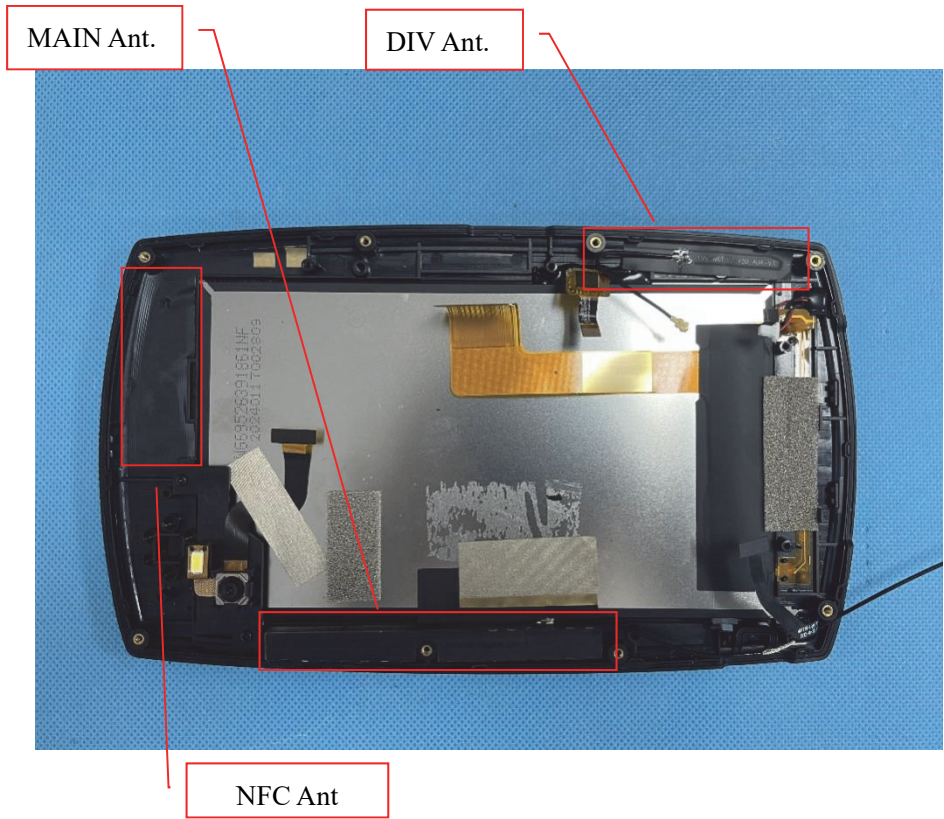


<p>Solder Board-Component View 4</p>	 <p>A photograph of a blue printed circuit board (PCB) assembly, labeled as View 4. The board is positioned on a blue textured surface. A black ruler with white markings is placed vertically to the left of the board, showing measurements in millimeters from 0 to 100. The board features several components, including a large central chip, a smaller chip to its right, and various surface-mount components. Yellow solder joints are visible at several points. The board is oriented vertically in the image.</p>
<p>Solder Board-Component View 5</p>	 <p>A photograph of the same blue PCB assembly, labeled as View 5. This view shows a different angle of the board, highlighting the central chip and the components to its right. The board is placed on the same blue textured surface. The yellow solder joints and various surface-mount components are clearly visible. The board is oriented vertically in the image.</p>

Antenna View 1



Antenna View 2

