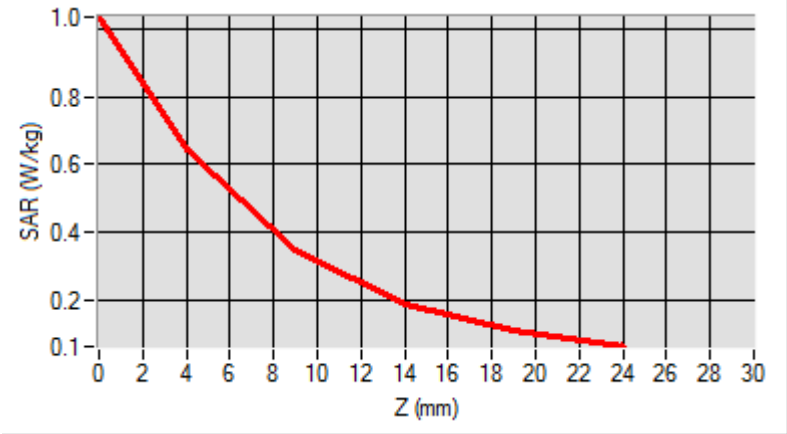


SAR Peak: 1.03 W/kg

SAR 10g (W/Kg)	0.278841
SAR 1g (W/Kg)	0.580308

Z (mm)	0.00	4.00	9.00	14.00	19.00
SAR (W/Kg)	1.0341	0.6435	0.3456	0.1879	0.1093



3D screen shot	Hot spot position

MEASUREMENT 30

Type: Phone measurement (Complete)

Date of measurement: 2020-12-25

Measurement duration: 12 minutes 3 seconds

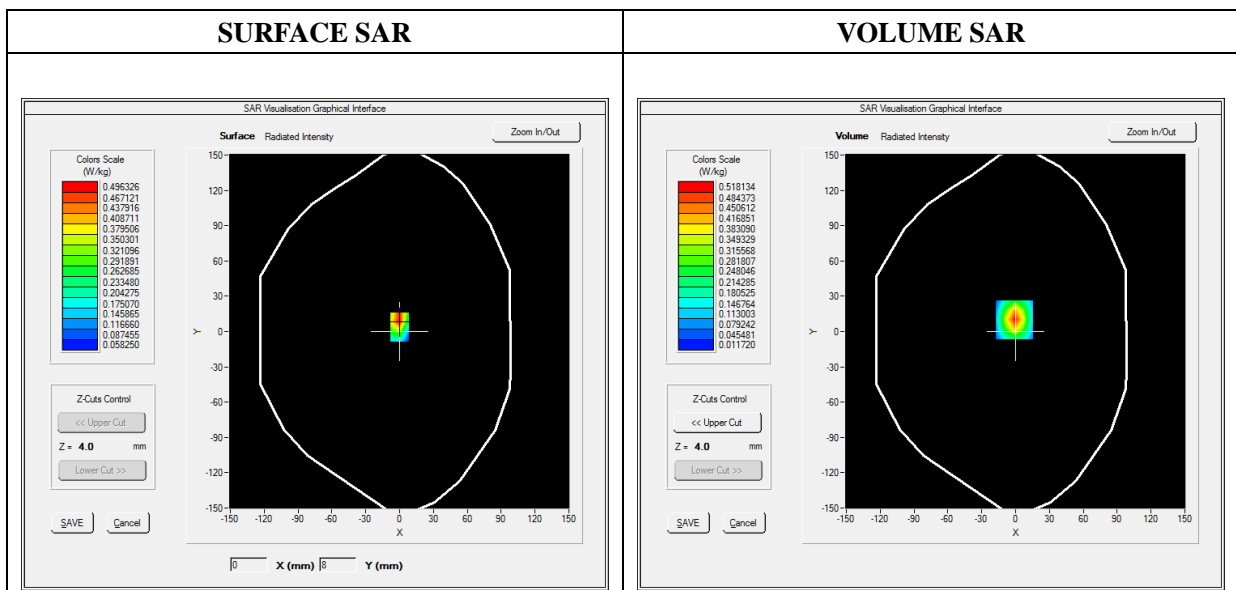
E-field Probe: SSE5- SN 09/13 EP168; ConvF: 5.84; Calibrated: 2020-05-22

A. Experimental conditions

Area Scan	dx=8mm dy=8mm
Zoom Scan	dx=8mm dy=8mm dz=5mm
Phantom	Flat Plane
Device Position	Back
Band	LTE Band 4
Channels	QPSK, 20MHz, 1RB,Low
Signal	Duty Cycle 1:1

B. SAR Measurement Results

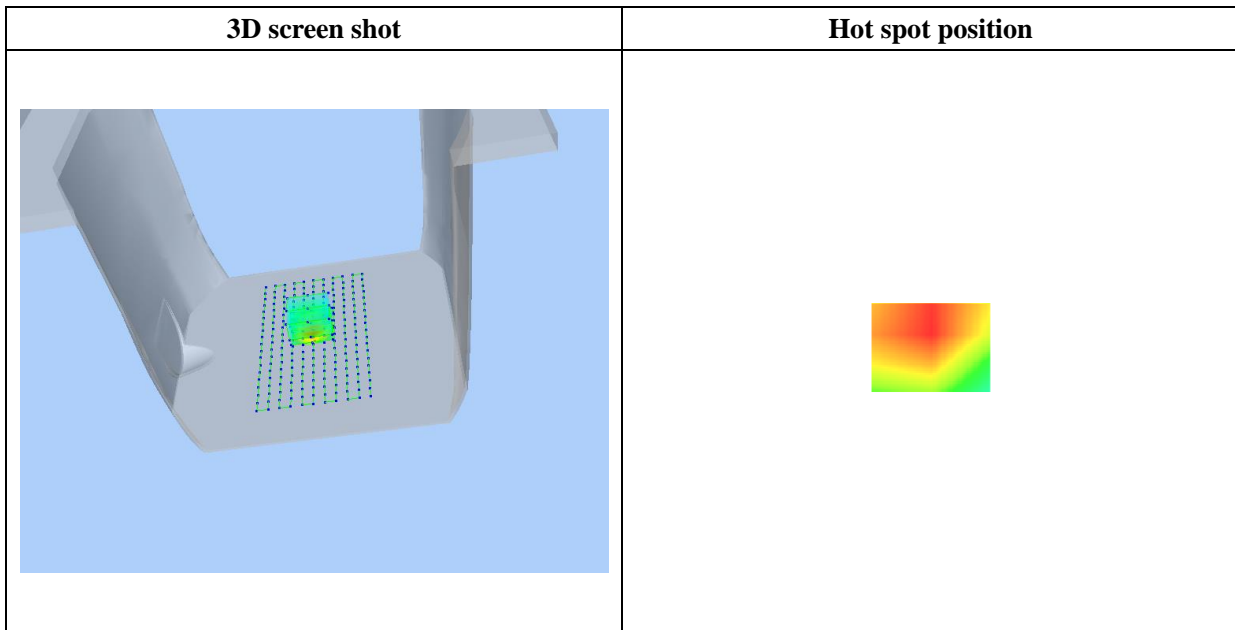
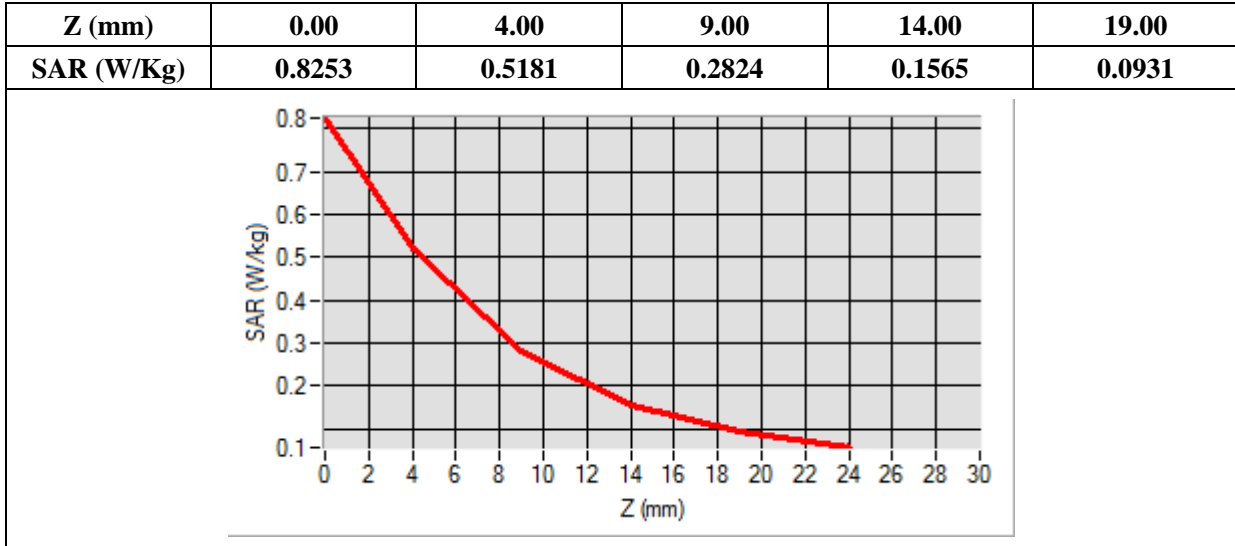
Frequency (MHz)	1720.000000
Relative Permittivity (real part)	39.883514
Conductivity (S/m)	1.338387
Power Variation (%)	-1.050000
Ambient Temperature	21.8
Liquid Temperature	21.8



Maximum location: X=-1.00, Y=10.00

SAR Peak: 0.82 W/kg

SAR 10g (W/Kg)	0.228119
SAR 1g (W/Kg)	0.468816



MEASUREMENT 36

Type: Phone measurement (Complete)

Date of measurement: 2020-12-29

Measurement duration: 12 minutes 3 seconds

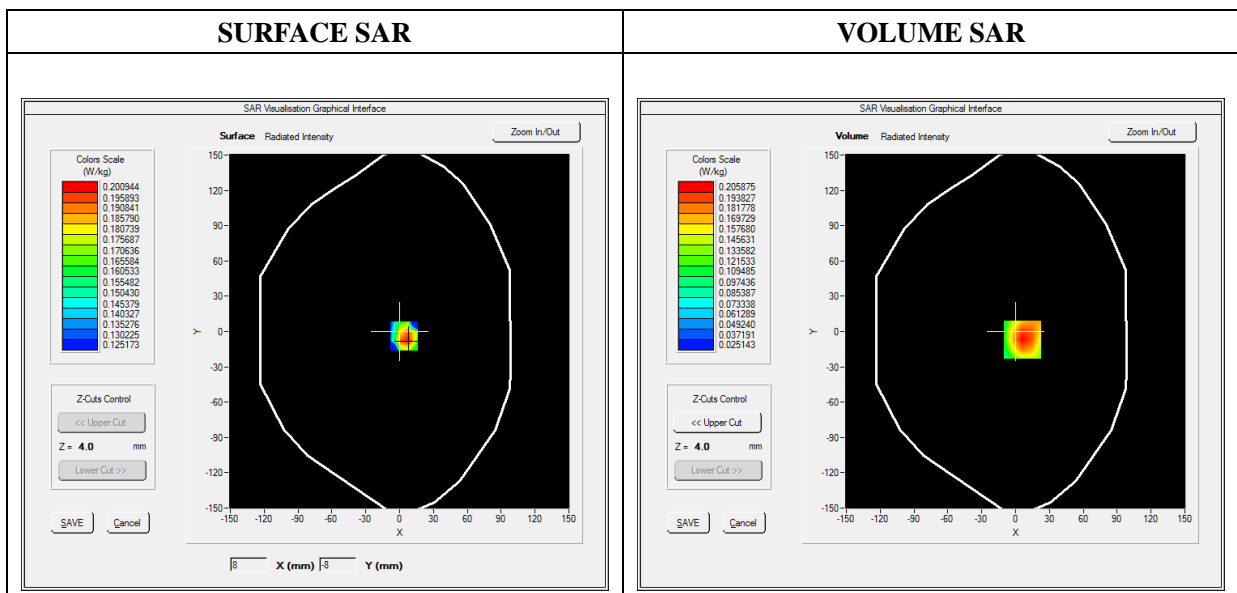
E-field Probe: SSE5- SN 09/13 EP168; ConvF: 6.93; Calibrated: 2020-05-22

A. Experimental conditions

Area Scan	dx=8mm dy=8mm
Zoom Scan	dx=8mm dy=8mm dz=5mm
Phantom	Flat Plane
Device Position	Back
Band	LTE Band 5
Channels	QPSK, 10MHz, 1RB,Middle
Signal	Duty Cycle 1:1

B. SAR Measurement Results

Frequency (MHz)	836.500000
Relative Permittivity (real part)	42.430271
Conductivity (S/m)	0.8768312
Power Variation (%)	-0.660000
Ambient Temperature	21.5
Liquid Temperature	21.5

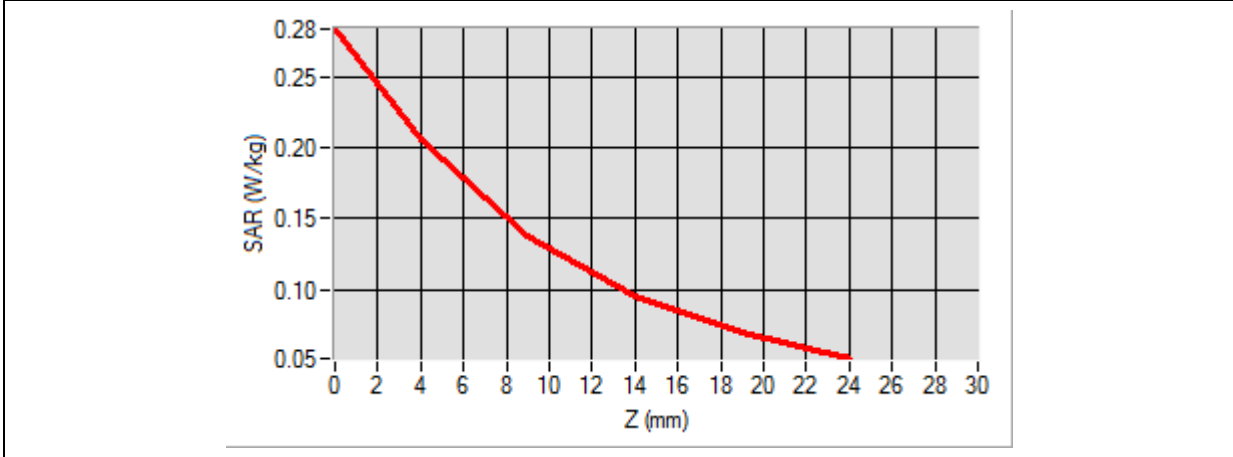


Maximum location: X=6.00, Y=-7.00

SAR Peak: 0.29 W/kg

SAR 10g (W/Kg)	0.131899
SAR 1g (W/Kg)	0.196371

Z (mm)	0.00	4.00	9.00	14.00	19.00
SAR (W/Kg)	0.2839	0.2059	0.1384	0.0959	0.0697



3D screen shot	Hot spot position
<p>A 3D perspective view of a grey device with a grid of green dots on its surface. A small area of the grid is highlighted with a color gradient from green to red, indicating the hot spot location.</p>	<p>A close-up, 2D-like view of the hot spot area, showing a color gradient from red to orange, representing the intensity of the SAR exposure.</p>

MEASUREMENT 42

Type: Phone measurement (Complete)

Date of measurement: 2020-12-23

Measurement duration: 12 minutes 3 seconds

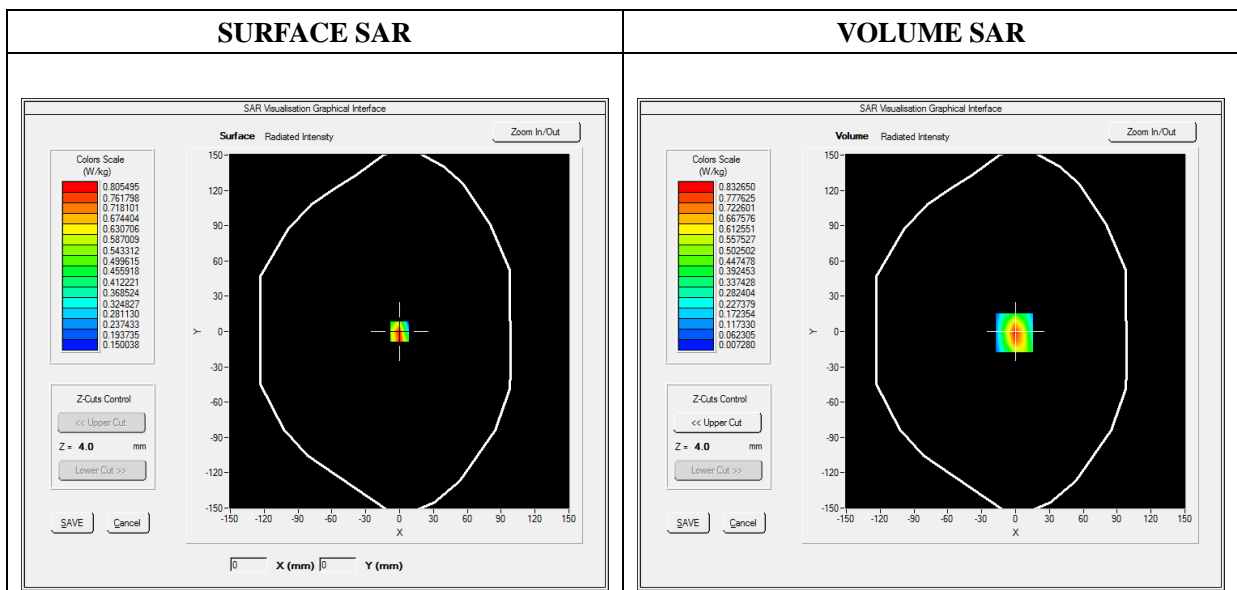
E-field Probe: SSE5- SN 09/13 EP168; ConvF: 5.37; Calibrated: 2020-05-22

A. Experimental conditions

Area Scan	dx=8mm dy=8mm
Zoom Scan	dx=5mm dy=5mm dz=5mm
Phantom	Flat Plane
Device Position	Back
Band	LTE Band 7
Channels	QPSK, 20MHz, 1RB,Middle
Signal	Duty Cycle 1:1

B. SAR Measurement Results

Frequency (MHz)	2535.000000
Relative Permittivity (real part)	38.964820
Conductivity (S/m)	1.932062
Power Variation (%)	-0.690000
Ambient Temperature	21.4
Liquid Temperature	21.4

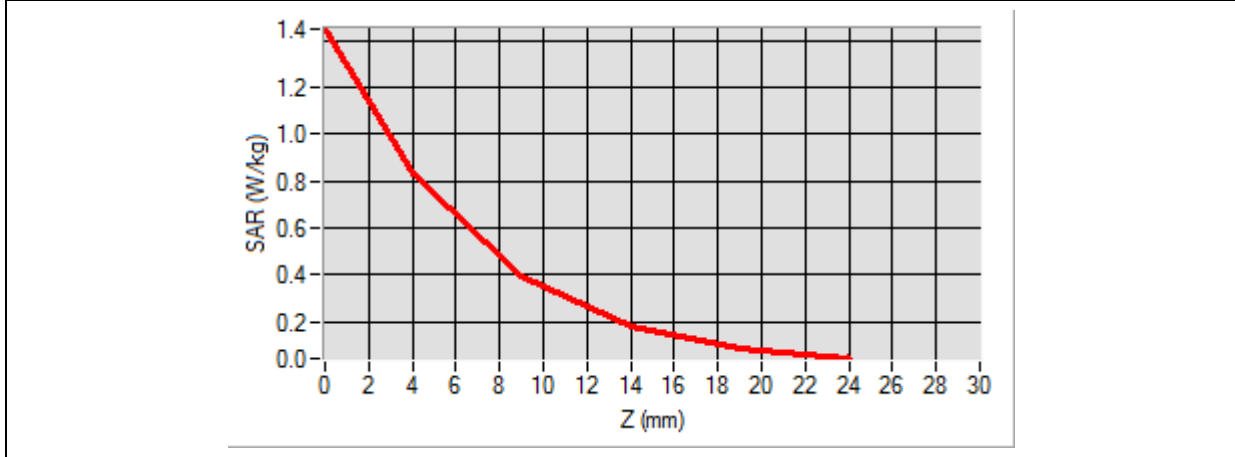


Maximum location: X=-1.00, Y=-1.00

SAR Peak: 1.46 W/kg

SAR 10g (W/Kg)	0.352554
SAR 1g (W/Kg)	0.766202

Z (mm)	0.00	4.00	9.00	14.00	19.00
SAR (W/Kg)	1.4488	0.8327	0.3919	0.1806	0.0882



3D screen shot	Hot spot position
<p>A 3D perspective view of a grey device with a grid of green dots on its top surface. A color-coded hot spot is visible, with red and yellow areas indicating high SAR values.</p>	<p>A 2D rectangular color-coded visualization of the hot spot, showing a gradient from red (highest SAR) to yellow and green (lower SAR).</p>

MEASUREMENT 48

Type: Phone measurement (Complete)

Date of measurement: 2020-12-29

Measurement duration: 12 minutes 3 seconds

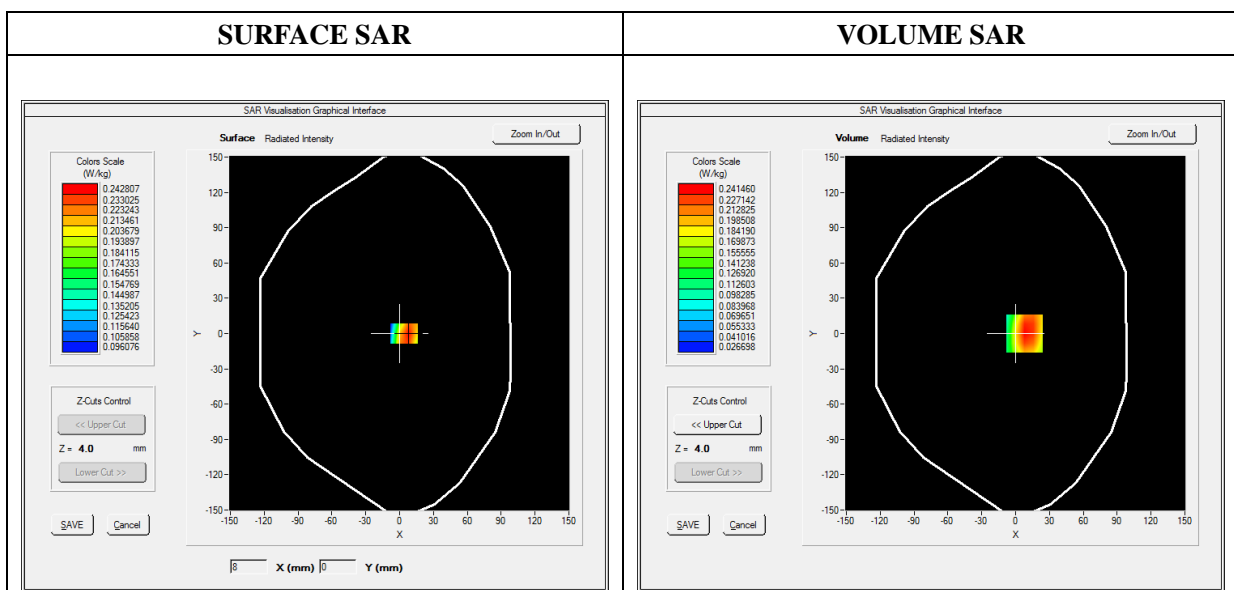
E-field Probe: SSE5- SN 09/13 EP168; ConvF: 6.99; Calibrated: 2020-05-22

A. Experimental conditions

Area Scan	dx=8mm dy=8mm
Zoom Scan	dx=8mm dy=8mm dz=5mm
Phantom	Flat Plane
Device Position	Back
Band	LTE Band 12
Channels	QPSK, 10MHz, 1RB,Low
Signal	Duty Cycle 1:1

B. SAR Measurement Results

Frequency (MHz)	704.000000
Relative Permittivity (real part)	42.935843
Conductivity (S/m)	0.839026
Power Variation (%)	-2.100000
Ambient Temperature	21.5
Liquid Temperature	21.5

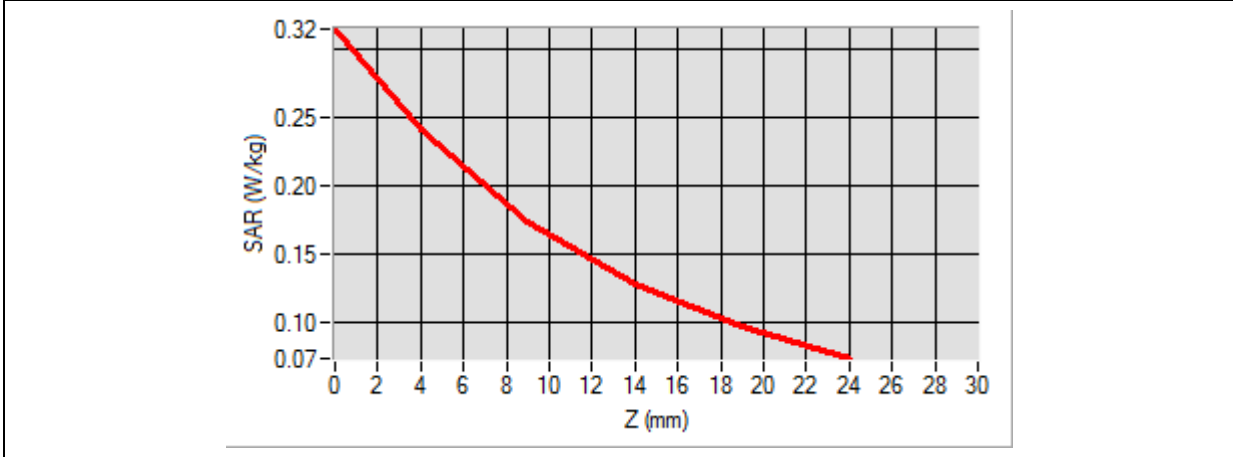


Maximum location: X=8.00, Y=0.00

SAR Peak: 0.32 W/kg

SAR 10g (W/Kg)	0.166137
SAR 1g (W/Kg)	0.238981

Z (mm)	0.00	4.00	9.00	14.00	19.00
SAR (W/Kg)	0.3151	0.2415	0.1740	0.1281	0.0971



3D screen shot	Hot spot position
<p>A 3D perspective view of a grey device with a grid of green dots on its top surface. A color-coded hot spot is visible, with yellow and red indicating higher SAR values.</p>	<p>A horizontal color gradient bar transitioning from yellow on the left to red on the right, representing the SAR intensity distribution.</p>

MEASUREMENT 54

Type: Phone measurement (Complete)

Date of measurement: 2020-12-29

Measurement duration: 12 minutes 3 seconds

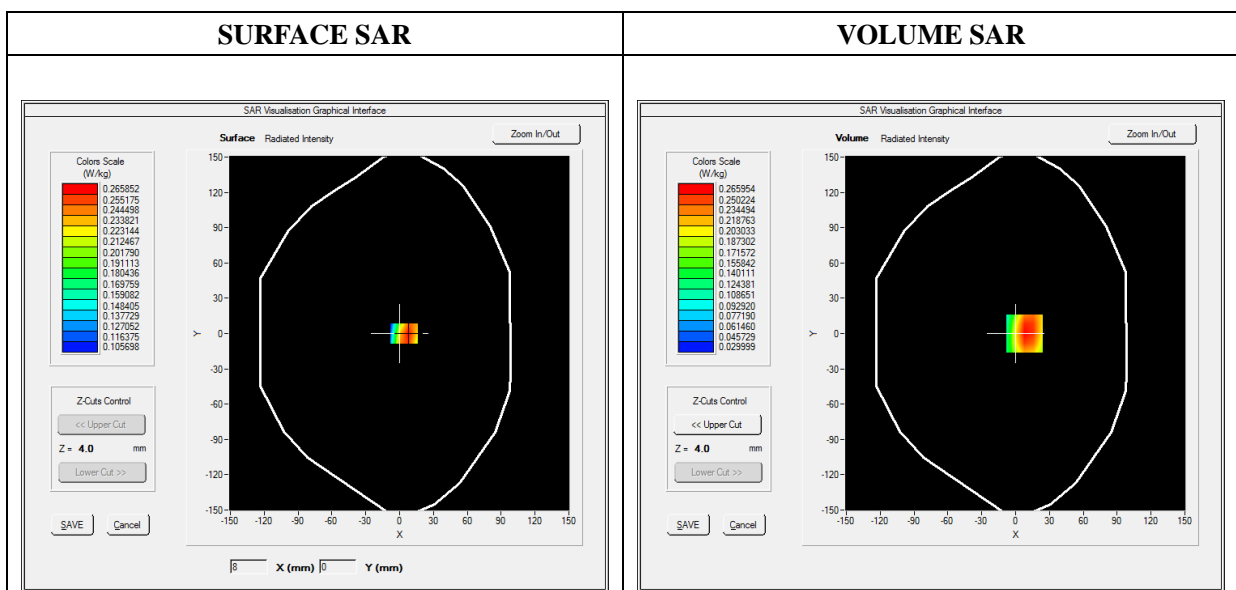
E-field Probe: SSE5- SN 09/13 EP168; ConvF: 6.99; Calibrated: 2020-05-22

A. Experimental conditions

Area Scan	dx=8mm dy=8mm
Zoom Scan	dx=8mm dy=8mm dz=5mm
Phantom	Flat Plane
Device Position	Back
Band	LTE Band 17
Channels	QPSK, 10MHz, 1RB,Low
Signal	Duty Cycle 1:1

B. SAR Measurement Results

Frequency (MHz)	709.000000
Relative Permittivity (real part)	42.935843
Conductivity (S/m)	0.839026
Power Variation (%)	-0.730000
Ambient Temperature	21.5
Liquid Temperature	21.5

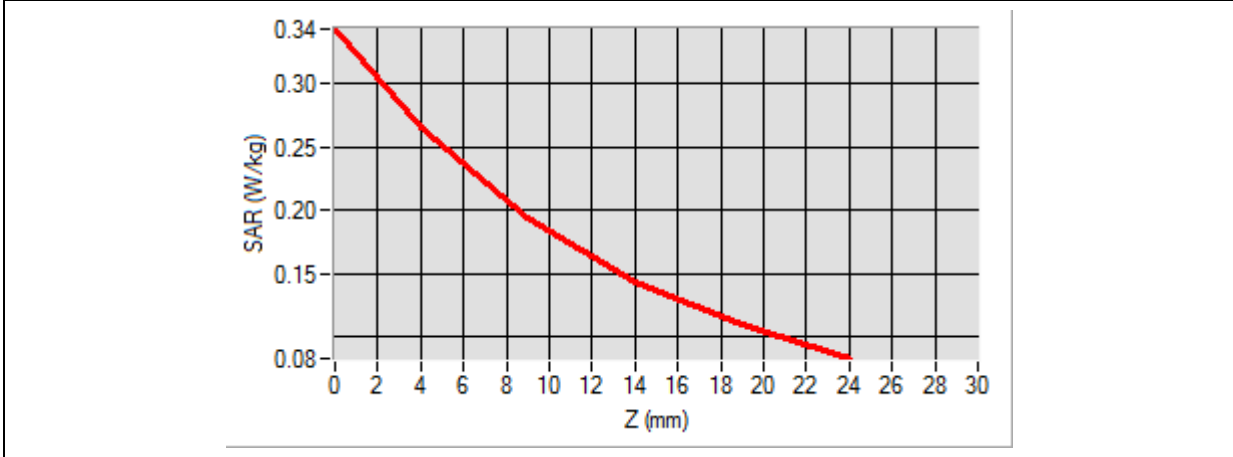


Maximum location: X=8.00, Y=0.00

SAR Peak: 0.35 W/kg

SAR 10g (W/Kg)	0.189451
SAR 1g (W/Kg)	0.271874

Z (mm)	0.00	4.00	9.00	14.00	19.00
SAR (W/Kg)	0.3435	0.2660	0.1939	0.1439	0.1092



3D screen shot	Hot spot position
<p>A 3D perspective view of a grey device. A grid of green dots is overlaid on the device's surface. A small area of the grid is highlighted with a color gradient from yellow to red, indicating the hot spot position.</p>	<p>A horizontal color gradient bar transitioning from yellow on the left to red on the right, representing the intensity of the hot spot.</p>

MEASUREMENT 60

Type: Phone measurement (Complete)

Date of measurement: 2020-12-23

Measurement duration: 12 minutes 3 seconds

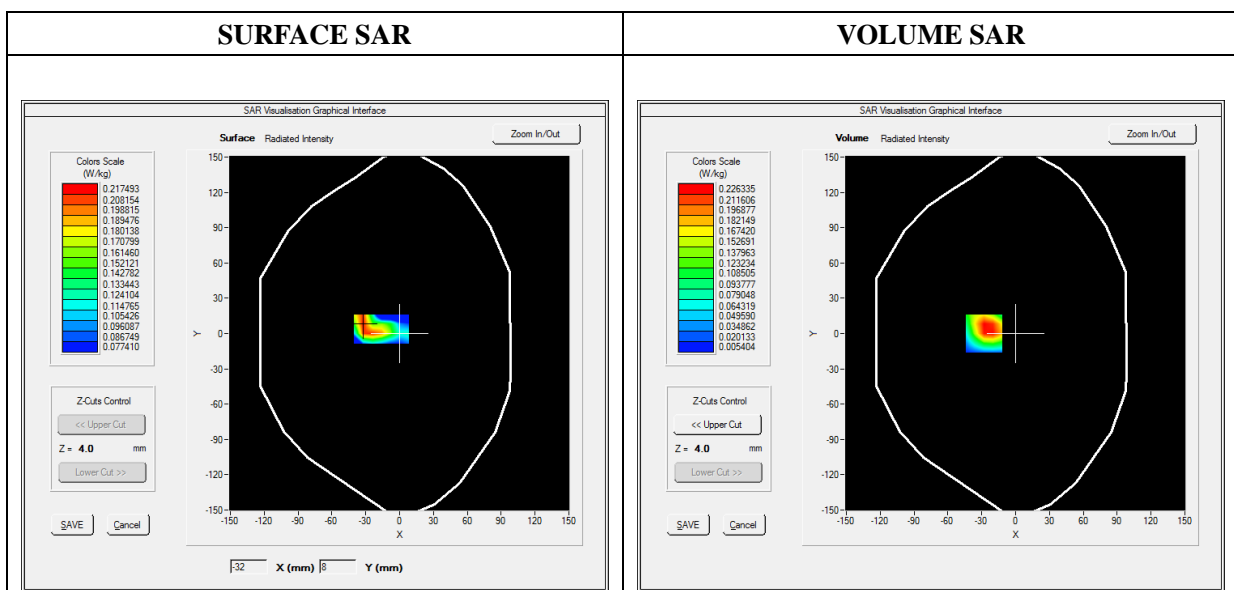
E-field Probe: SSE5- SN 09/13 EP168; ConvF: 5.64; Calibrated: 2020-05-22

A. Experimental conditions

Area Scan	dx=8mm dy=8mm
Zoom Scan	dx=5mm dy=5mm dz=5mm
Phantom	Flat Plane
Device Position	Back
Band	WiFi_802.11b
Channels	Low
Signal	Duty Cycle 1:1

B. SAR Measurement Results

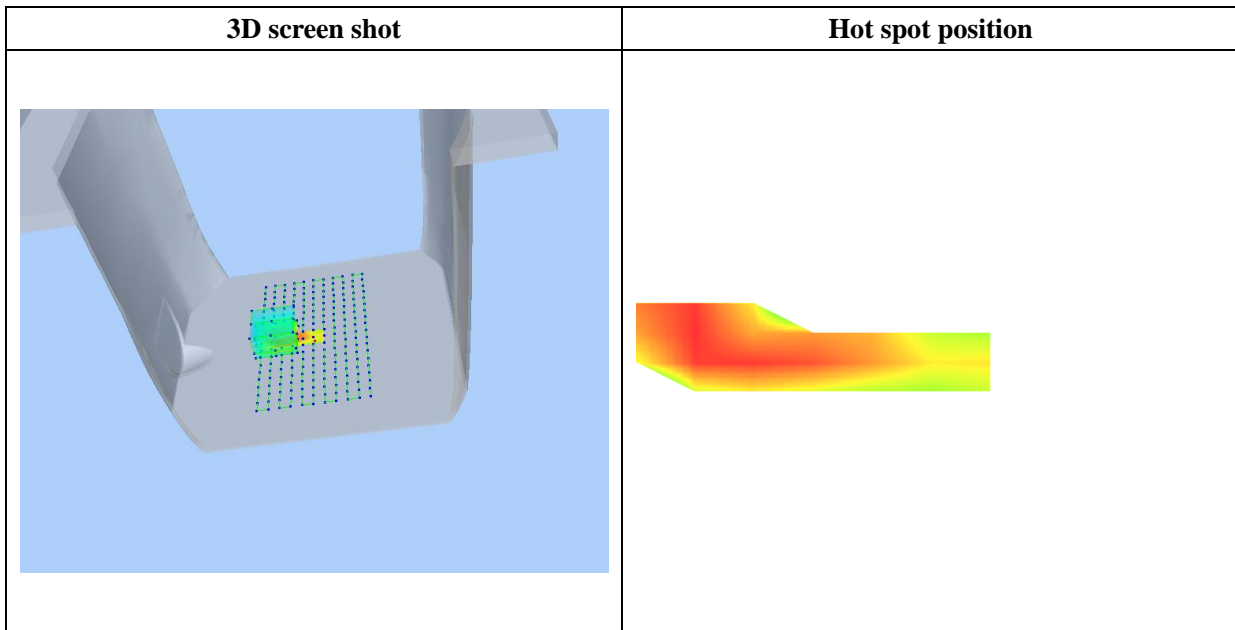
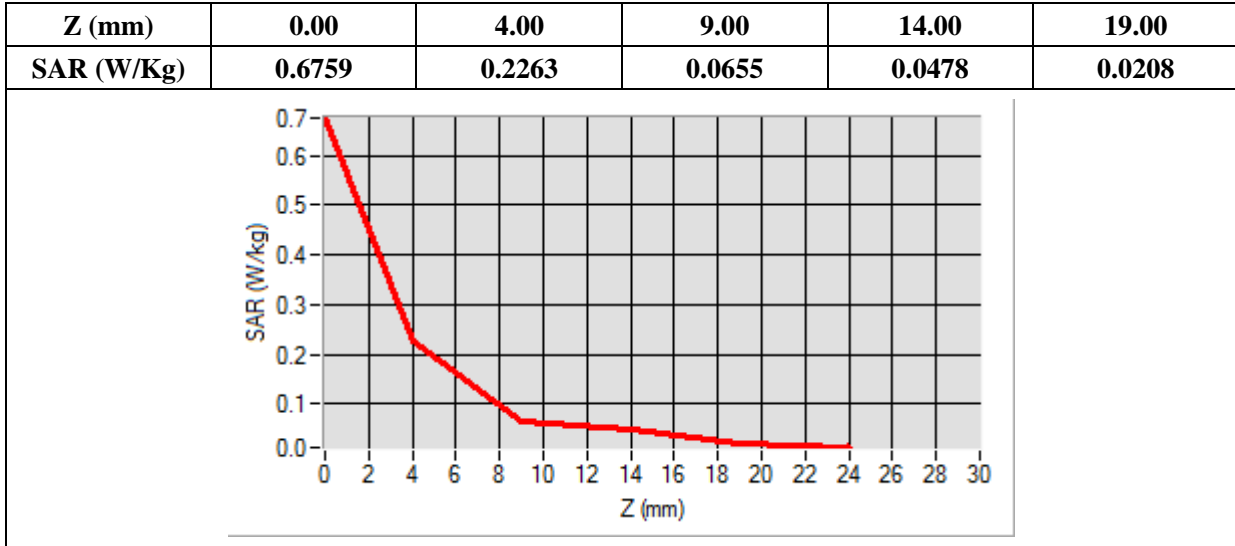
Frequency (MHz)	2412.000000
Relative Permittivity (real part)	39.905111
Conductivity (S/m)	1.790286
Power Variation (%)	-0.540000
Ambient Temperature	21.4
Liquid Temperature	21.4



Maximum location: X=-28.00, Y=0.00

SAR Peak: 0.43 W/kg

SAR 10g (W/Kg)	0.109252
SAR 1g (W/Kg)	0.226676



MEASUREMENT 63

Type: Phone measurement (Complete)

Date of measurement: 2020-12-29

Measurement duration: 12 minutes 3 seconds

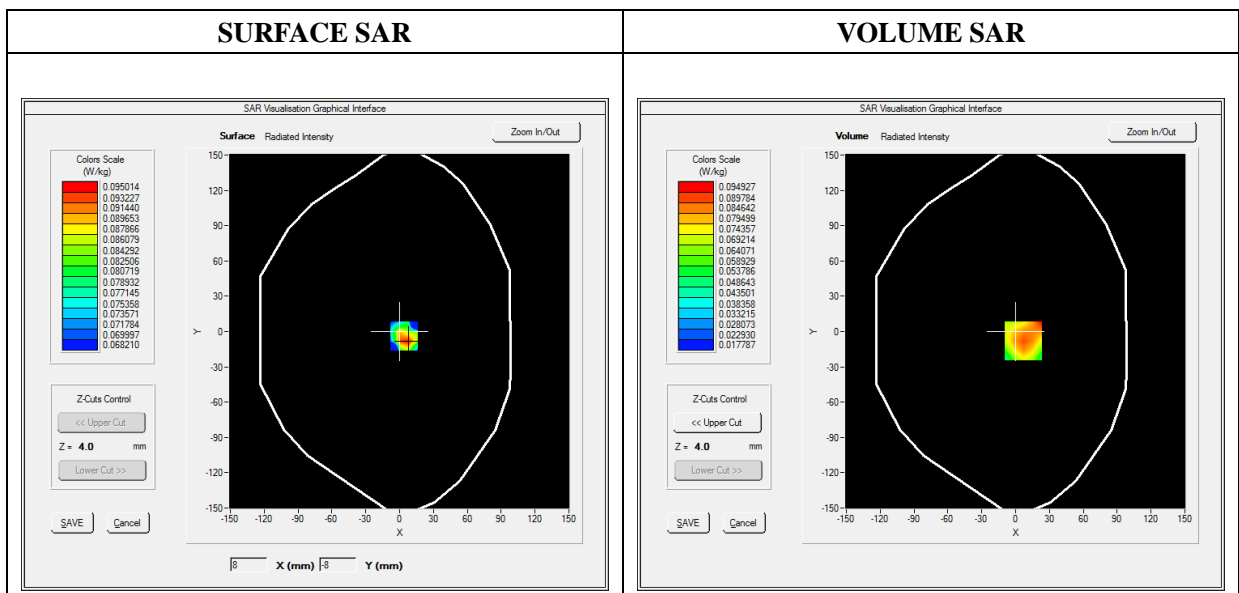
E-field Probe: SSE5- SN 09/13 EP168; ConvF: 6.93; Calibrated: 2020-05-22

A. Experimental conditions

Area Scan	dx=8mm dy=8mm
Zoom Scan	dx=8mm dy=8mm dz=5mm
Phantom	Flat Plane
Device Position	Back
Band	GPRS850_4TX
Channels	Low
Signal	Duty Cycle 1:1

B. SAR Measurement Results

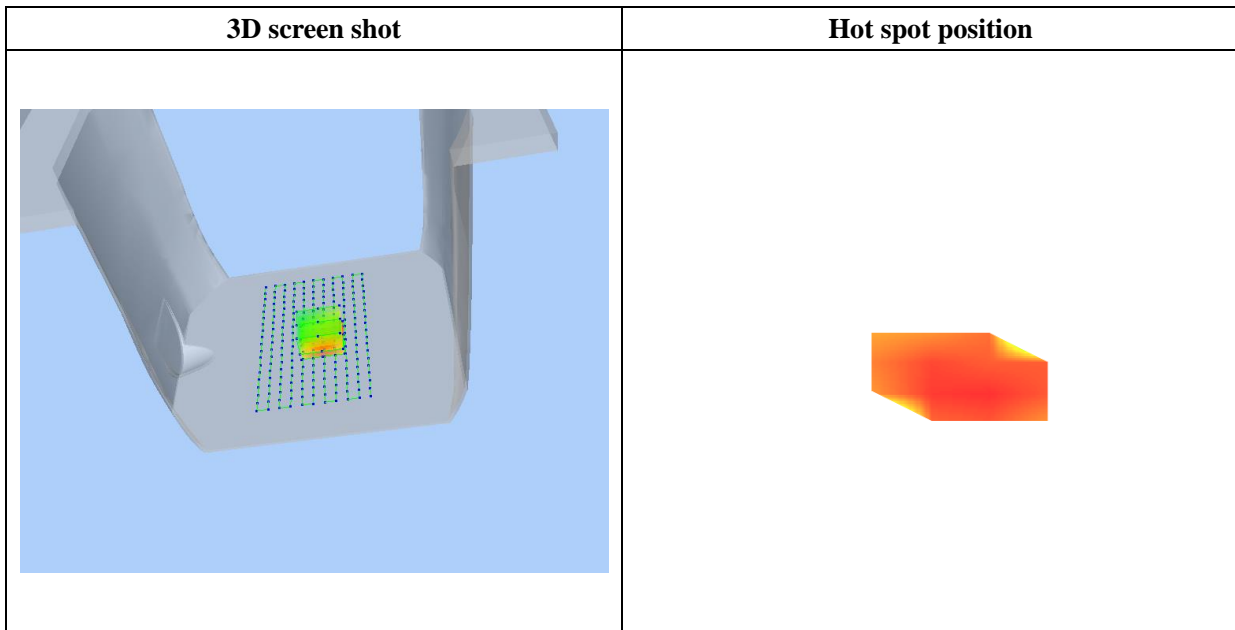
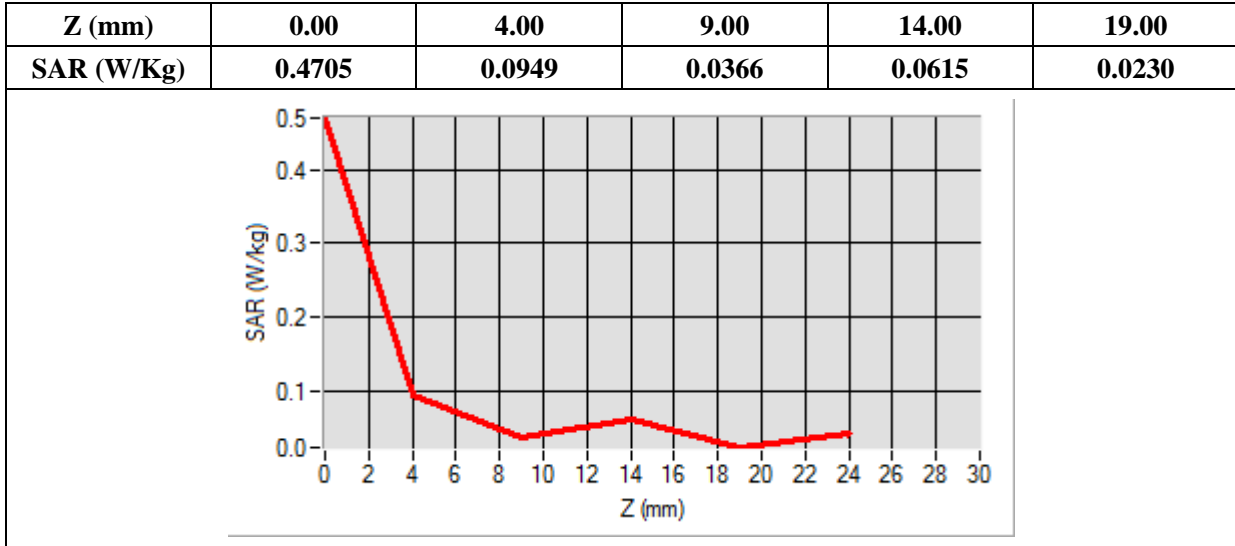
Frequency (MHz)	824.200000
Relative Permittivity (real part)	42.460277
Conductivity (S/m)	0.878883
Power Variation (%)	0.860000
Ambient Temperature	21.5
Liquid Temperature	21.5



Maximum location: X=7.00, Y=-8.00

SAR Peak: 0.11 W/kg

SAR 10g (W/Kg)	0.063532
SAR 1g (W/Kg)	0.084797



MEASUREMENT 69

Type: Phone measurement (Complete)

Date of measurement: 2020-12-25

Measurement duration: 12 minutes 3 seconds

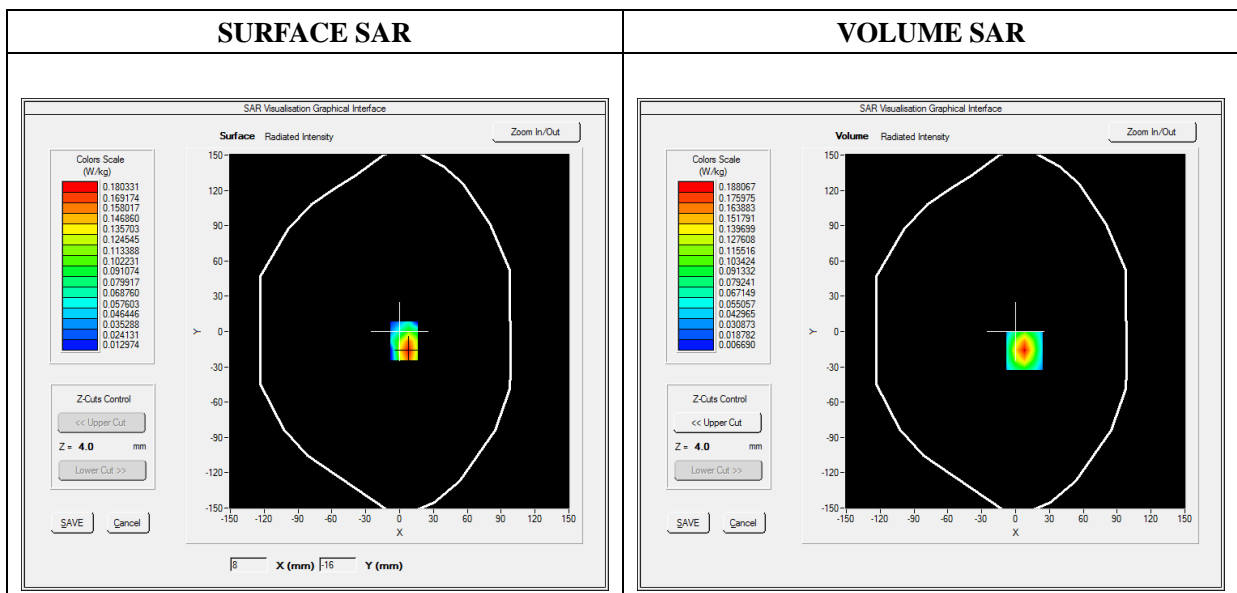
E-field Probe: SSE5- SN 09/13 EP168; ConvF: 6.35; Calibrated: 2020-05-22

A. Experimental conditions

Area Scan	dx=8mm dy=8mm
Zoom Scan	dx=8mm dy=8mm dz=5mm
Phantom	Flat Plane
Device Position	Bottom
Band	GPRS1900_4TX
Channels	High
Signal	Duty Cycle 1:1

B. SAR Measurement Results

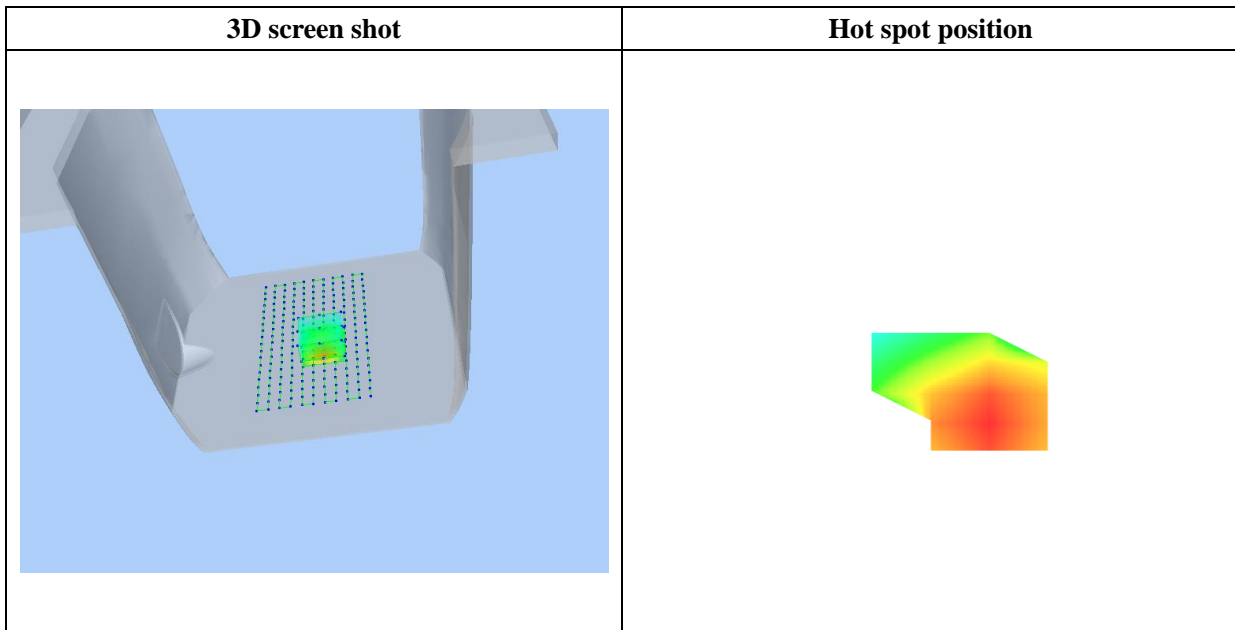
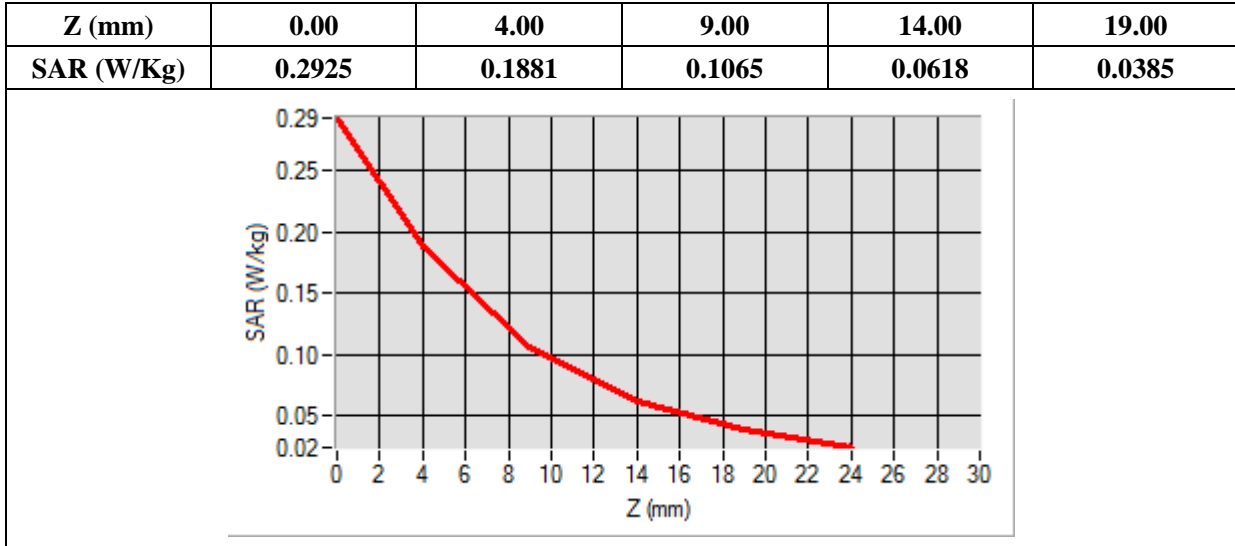
Frequency (MHz)	1909.800000
Relative Permittivity (real part)	39.107500
Conductivity (S/m)	1.412250
Power Variation (%)	-1.830000
Ambient Temperature	21.8
Liquid Temperature	21.8



Maximum location: X=8.00, Y=-16.00

SAR Peak: 0.29 W/kg

SAR 10g (W/Kg)	0.088691
SAR 1g (W/Kg)	0.172060



MEASUREMENT 72

Type: Phone measurement (Complete)

Date of measurement: 2020-12-25

Measurement duration: 12 minutes 3 seconds

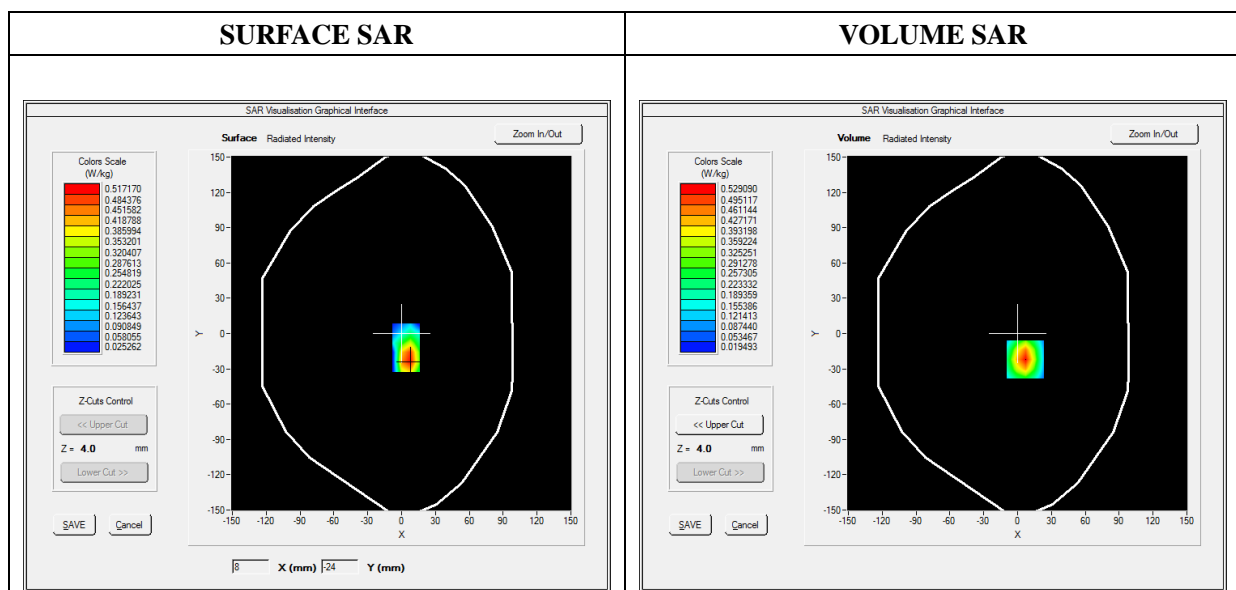
E-field Probe: SSE5- SN 09/13 EP168; ConvF: 6.35; Calibrated: 2020-05-22

A. Experimental conditions

Area Scan	dx=8mm dy=8mm
Zoom Scan	dx=8mm dy=8mm dz=5mm
Phantom	Flat Plane
Device Position	Bottom
Band	WCDMA1900_RMC
Channels	High
Signal	Duty Cycle 1:1

B. SAR Measurement Results

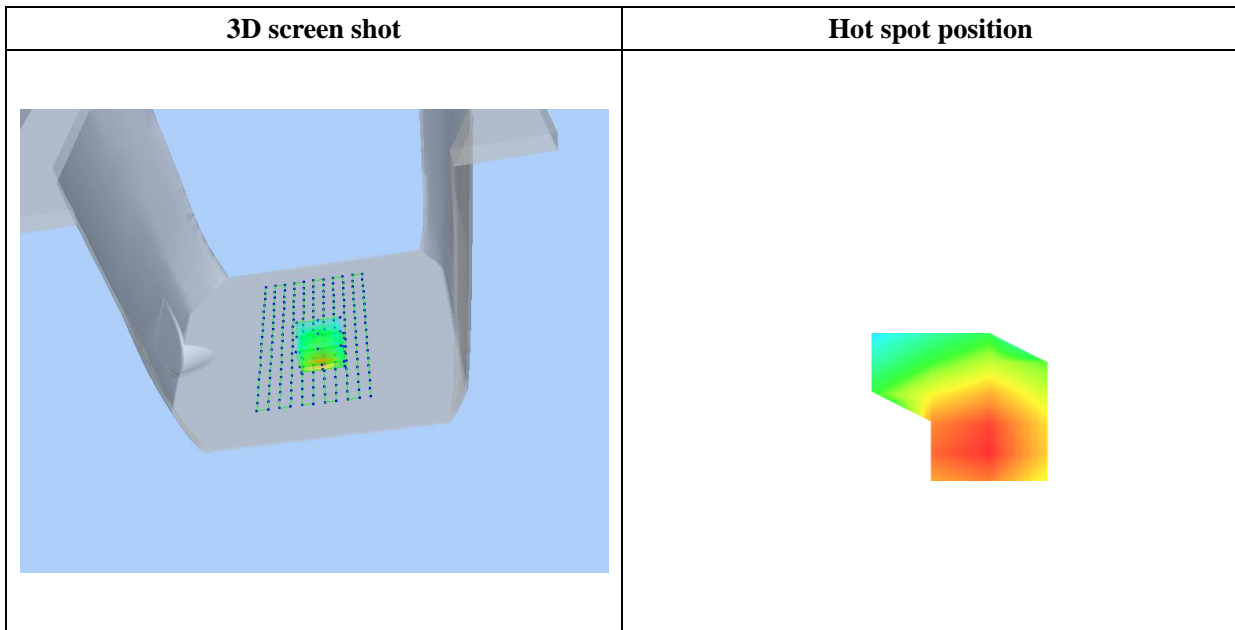
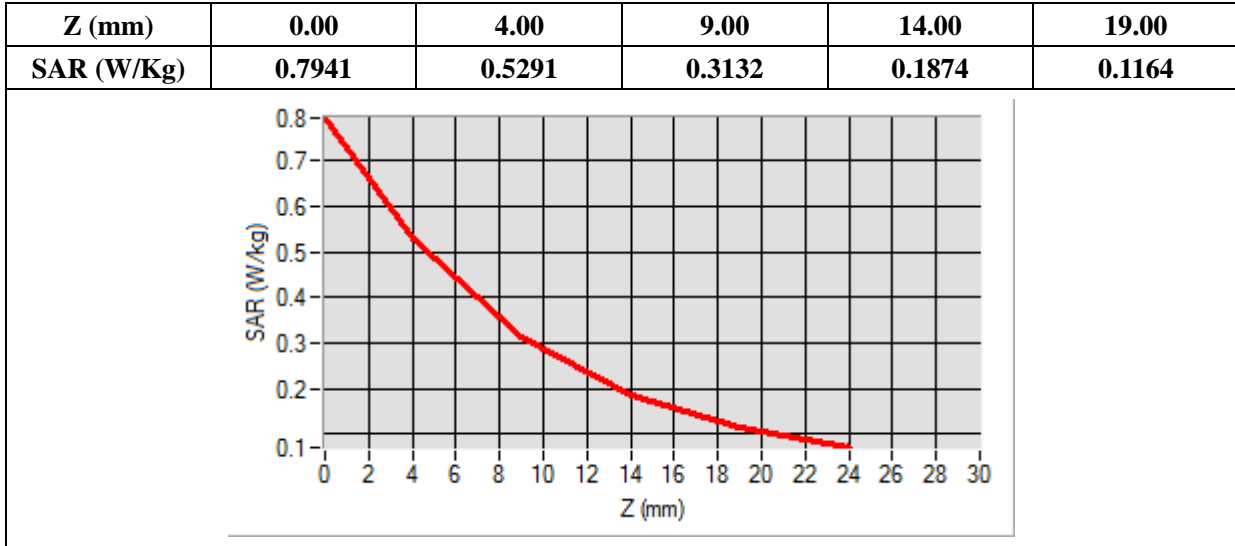
Frequency (MHz)	1907.600000
Relative Permittivity (real part)	39.107500
Conductivity (S/m)	1.412250
Power Variation (%)	-1.300000
Ambient Temperature	21.8
Liquid Temperature	21.8



Maximum location: X=7.00, Y=-22.00

SAR Peak: 0.80 W/kg

SAR 10g (W/Kg)	0.257658
SAR 1g (W/Kg)	0.487046



MEASUREMENT 75

Type: Phone measurement (Complete)

Date of measurement: 2020-12-25

Measurement duration: 12 minutes 3 seconds

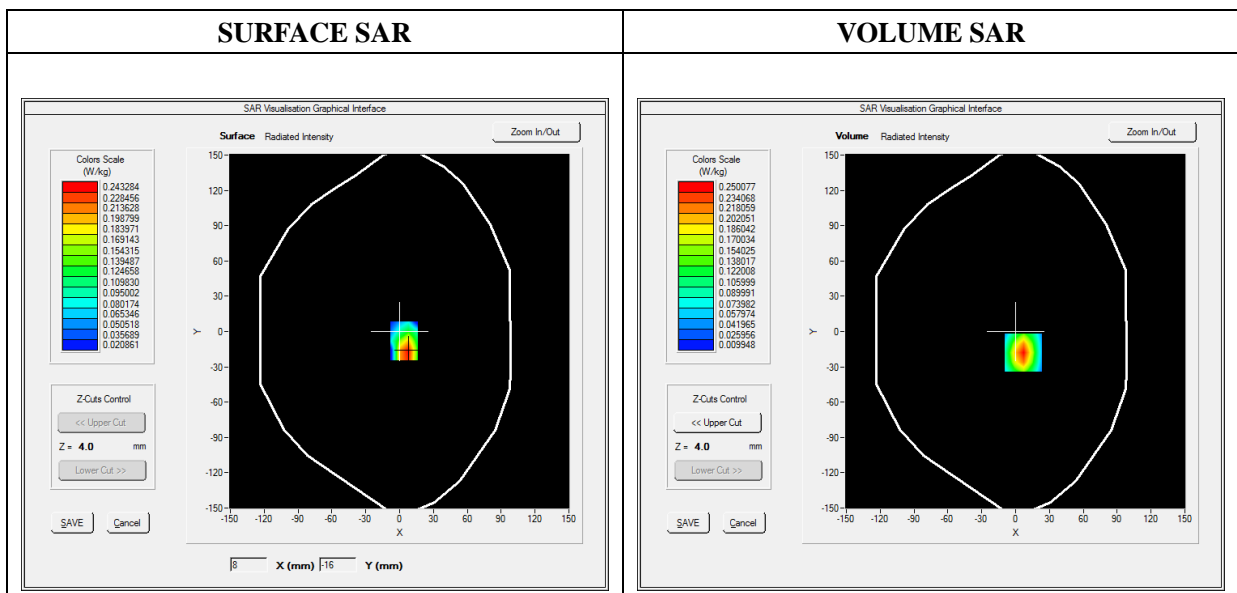
E-field Probe: SSE5- SN 09/13 EP168; ConvF: 5.84; Calibrated: 2020-05-22

A. Experimental conditions

Area Scan	dx=8mm dy=8mm
Zoom Scan	dx=8mm dy=8mm dz=5mm
Phantom	Flat Plane
Device Position	Bottom
Band	WCDMA1700_RMC
Channels	Low
Signal	Duty Cycle 1:1

B. SAR Measurement Results

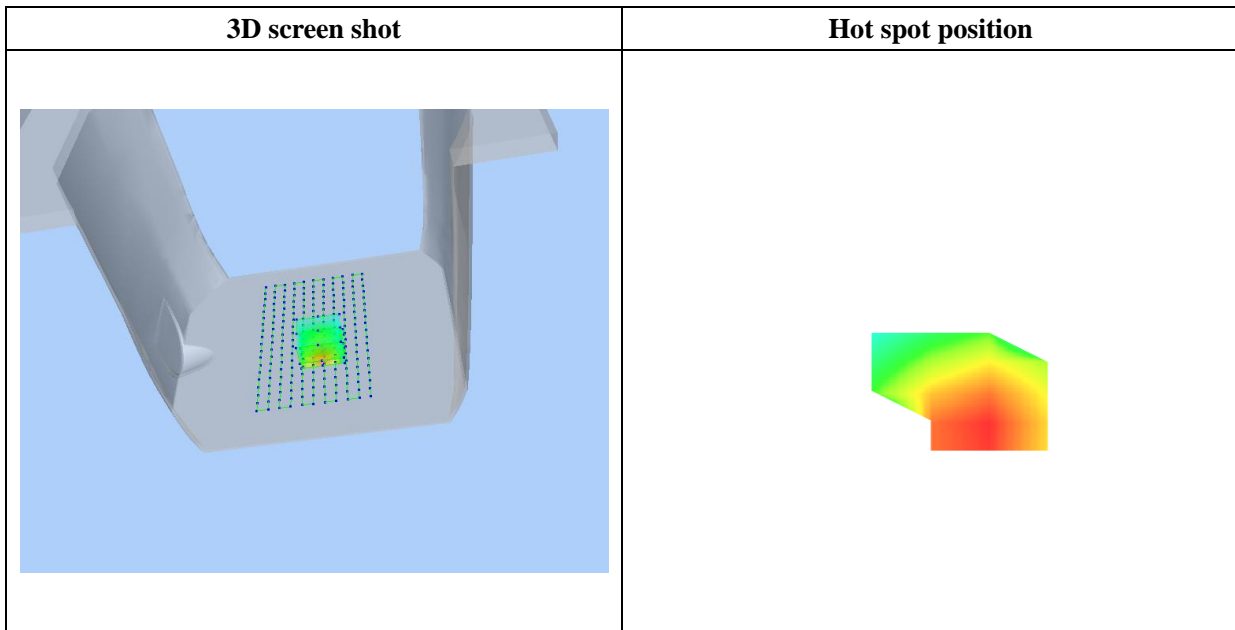
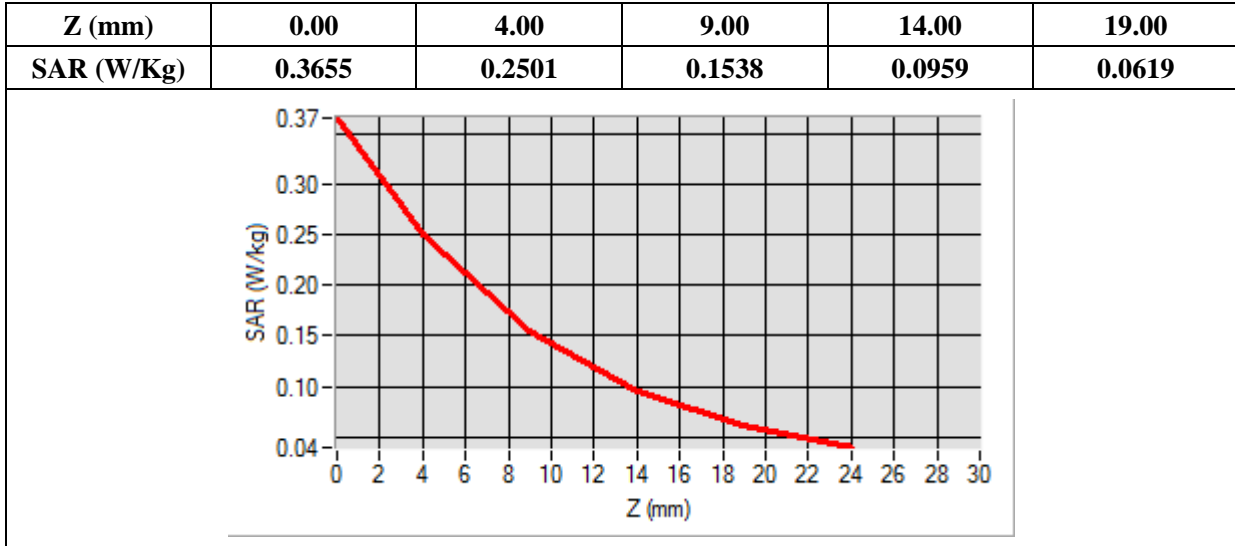
Frequency (MHz)	1712.400000
Relative Permittivity (real part)	39.883514
Conductivity (S/m)	1.338387
Power Variation (%)	-0.510000
Ambient Temperature	21.8
Liquid Temperature	21.8



Maximum location: X=7.00, Y=-18.00

SAR Peak: 0.37 W/kg

SAR 10g (W/Kg)	0.124886
SAR 1g (W/Kg)	0.229867



MEASUREMENT 76

Type: Phone measurement (Complete)

Date of measurement: 2020-12-29

Measurement duration: 12 minutes 3 seconds

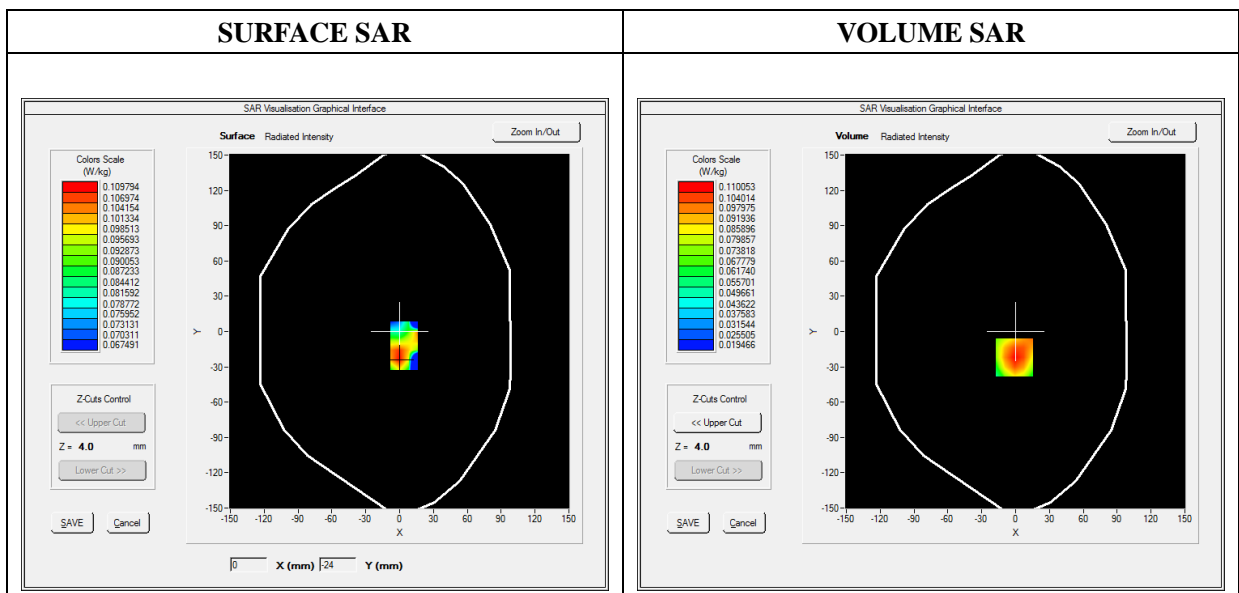
E-field Probe: SSE5- SN 09/13 EP168; ConvF: 6.93; Calibrated: 2020-05-22

A. Experimental conditions

Area Scan	dx=8mm dy=8mm
Zoom Scan	dx=8mm dy=8mm dz=5mm
Phantom	Flat Plane
Device Position	Back
Band	WCDMA850_RMC
Channels	Low
Signal	Duty Cycle 1:1

B. SAR Measurement Results

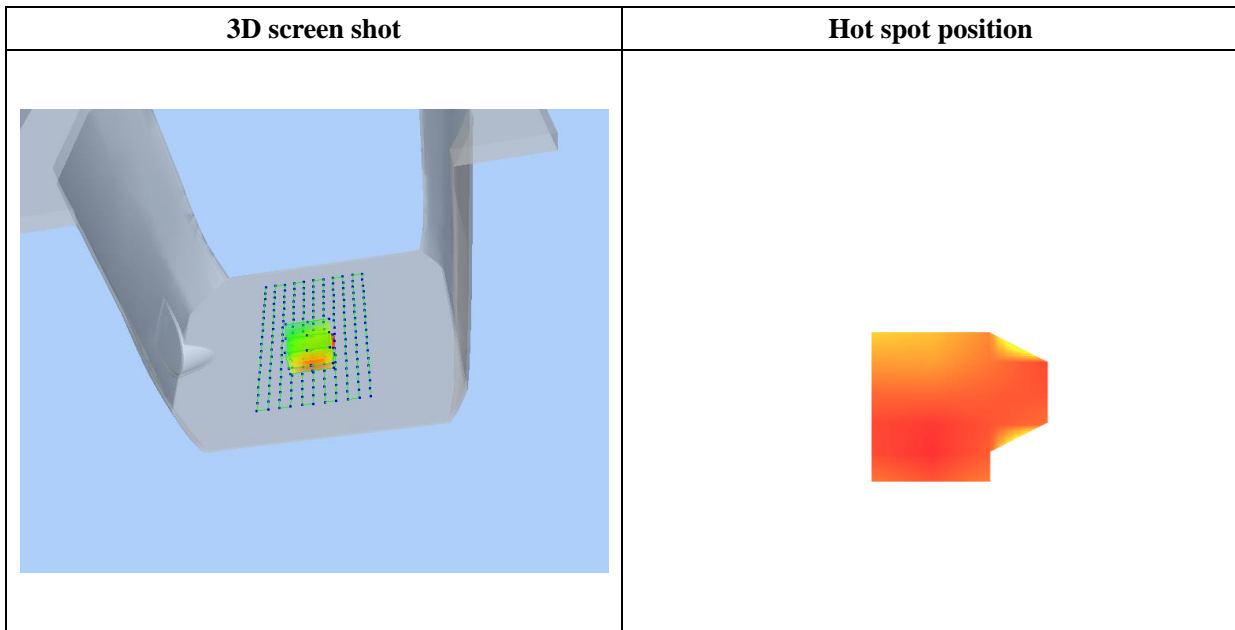
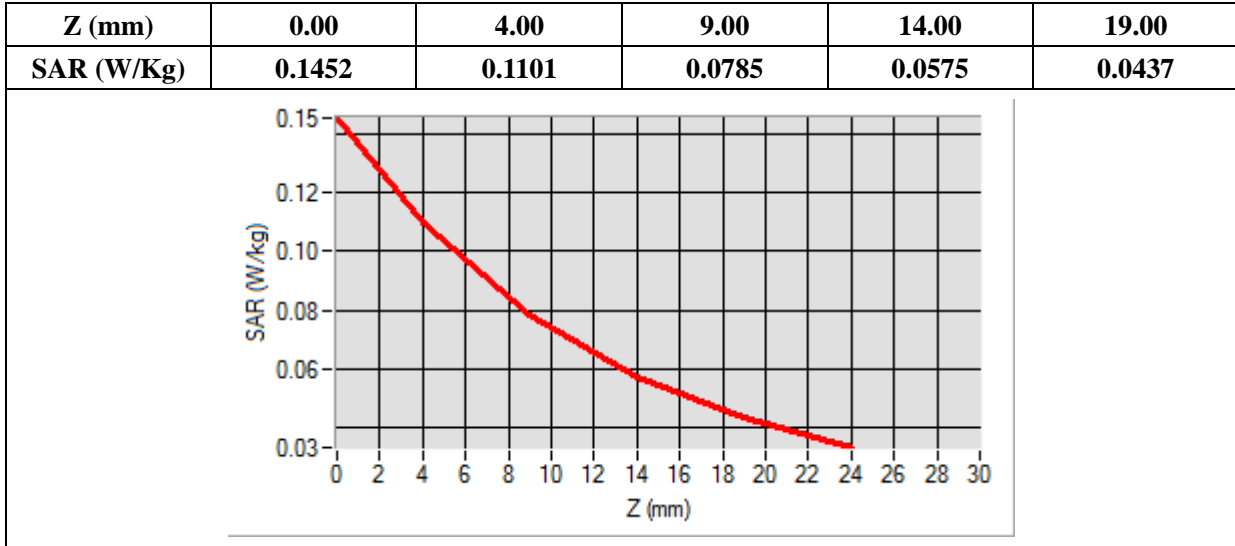
Frequency (MHz)	826.400000
Relative Permittivity (real part)	42.460277
Conductivity (S/m)	0.878883
Power Variation (%)	-1.630000
Ambient Temperature	21.5
Liquid Temperature	21.5



Maximum location: X=-1.00, Y=-22.00

SAR Peak: 0.15 W/kg

SAR 10g (W/Kg)	0.073362
SAR 1g (W/Kg)	0.105446



MEASUREMENT 81

Type: Phone measurement (Complete)

Date of measurement: 2020-12-25

Measurement duration: 12 minutes 3 seconds

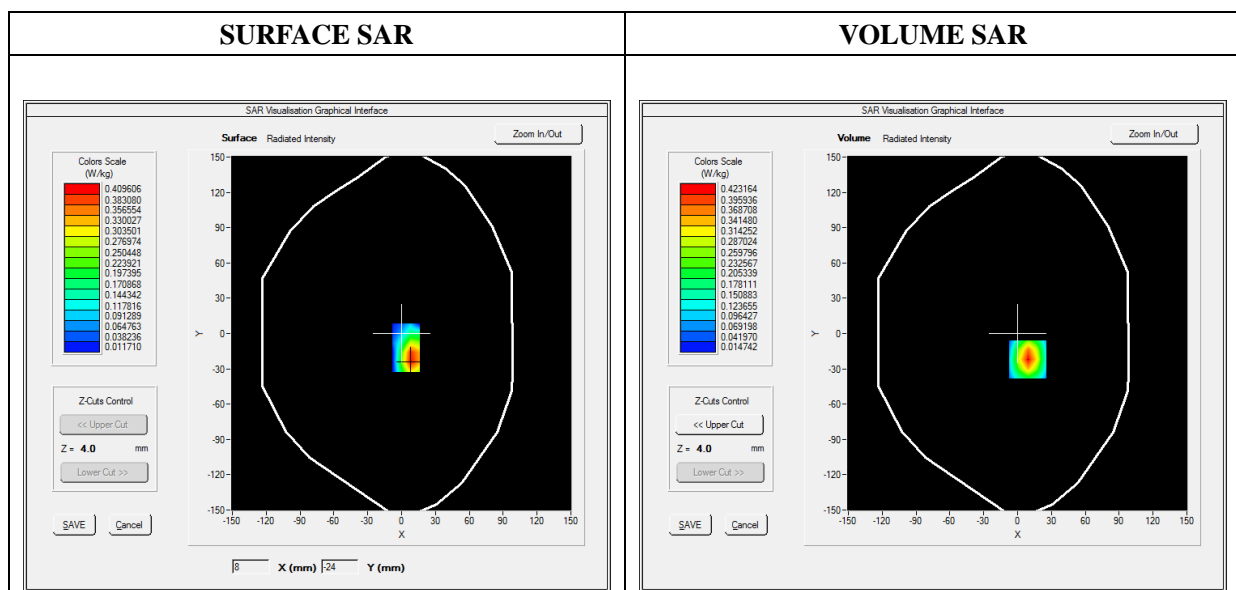
E-field Probe: SSE5- SN 09/13 EP168; ConvF: 6.35; Calibrated: 2020-05-22

A. Experimental conditions

Area Scan	dx=8mm dy=8mm
Zoom Scan	dx=8mm dy=8mm dz=5mm
Phantom	Flat Plane
Device Position	Bottom
Band	LTE Band 2
Channels	QPSK, 20MHz, 1RB,Low
Signal	Duty Cycle 1:1

B. SAR Measurement Results

Frequency (MHz)	1860.000000
Relative Permittivity (real part)	39.140521
Conductivity (S/m)	1.407486
Power Variation (%)	-0.850000
Ambient Temperature	21.8
Liquid Temperature	21.8

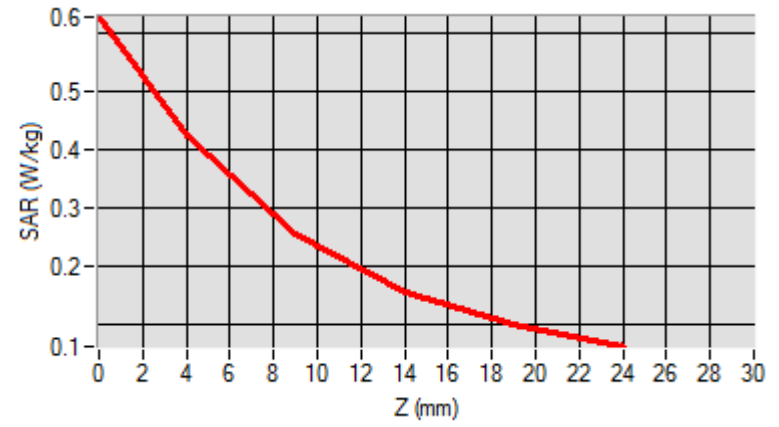


Maximum location: X=9.00, Y=-22.00

SAR Peak: 0.63 W/kg

SAR 10g (W/Kg)	0.203363
SAR 1g (W/Kg)	0.386839

Z (mm)	0.00	4.00	9.00	14.00	19.00
SAR (W/Kg)	0.6293	0.4232	0.2540	0.1543	0.0973



3D screen shot	Hot spot position

MEASUREMENT 87

Type: Phone measurement (Complete)

Date of measurement: 2020-12-25

Measurement duration: 12 minutes 3 seconds

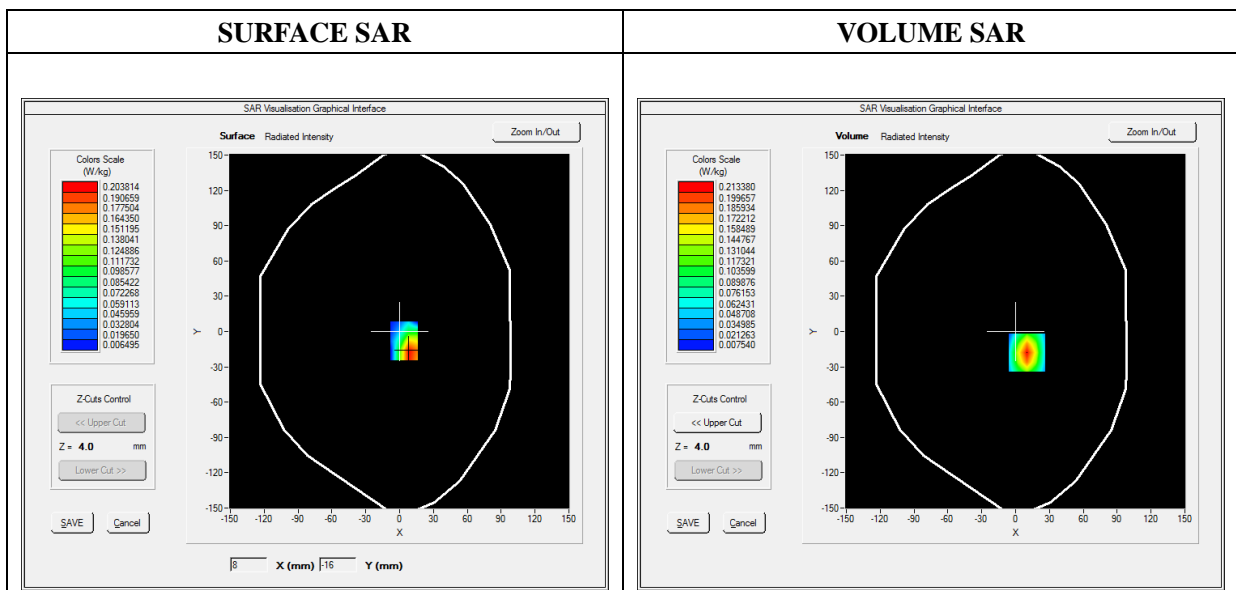
E-field Probe: SSE5- SN 09/13 EP168; ConvF: 5.84; Calibrated: 2020-05-22

A. Experimental conditions

Area Scan	dx=8mm dy=8mm
Zoom Scan	dx=8mm dy=8mm dz=5mm
Phantom	Flat Plane
Device Position	Bottom
Band	LTE Band 4
Channels	QPSK, 20MHz, 1RB,Low
Signal	Duty Cycle 1:1

B. SAR Measurement Results

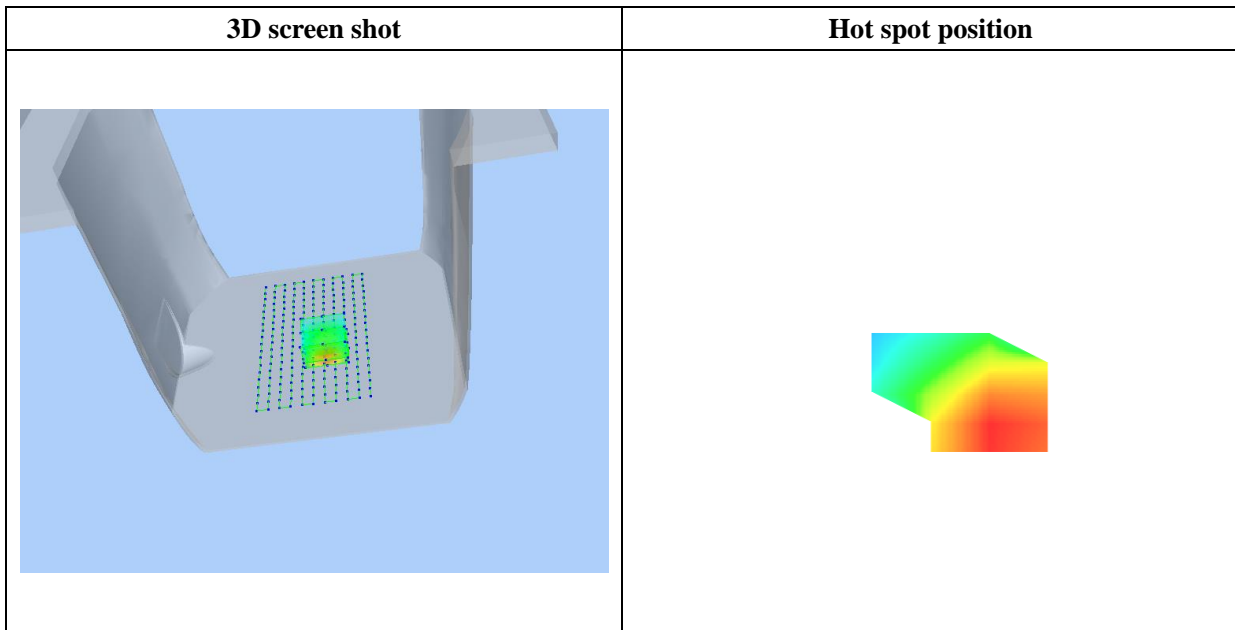
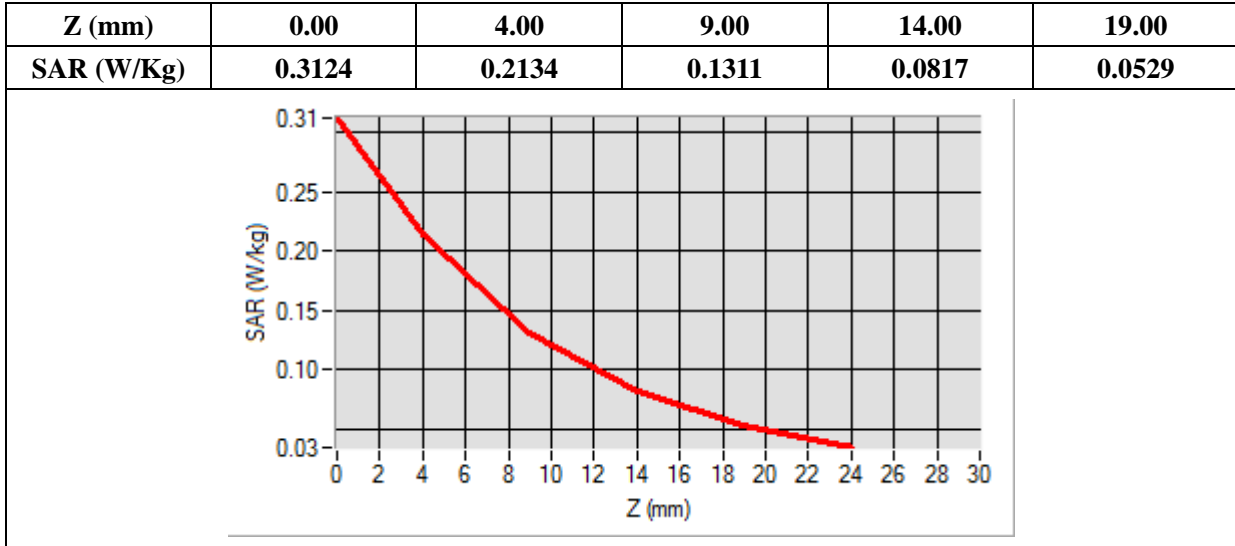
Frequency (MHz)	1720.000000
Relative Permittivity (real part)	39.883514
Conductivity (S/m)	1.338387
Power Variation (%)	-0.870000
Ambient Temperature	21.8
Liquid Temperature	21.8



Maximum location: X=10.00, Y=-18.00

SAR Peak: 0.31 W/kg

SAR 10g (W/Kg)	0.104552
SAR 1g (W/Kg)	0.194881



MEASUREMENT 91

Type: Phone measurement (Complete)

Date of measurement: 2020-12-29

Measurement duration: 12 minutes 3 seconds

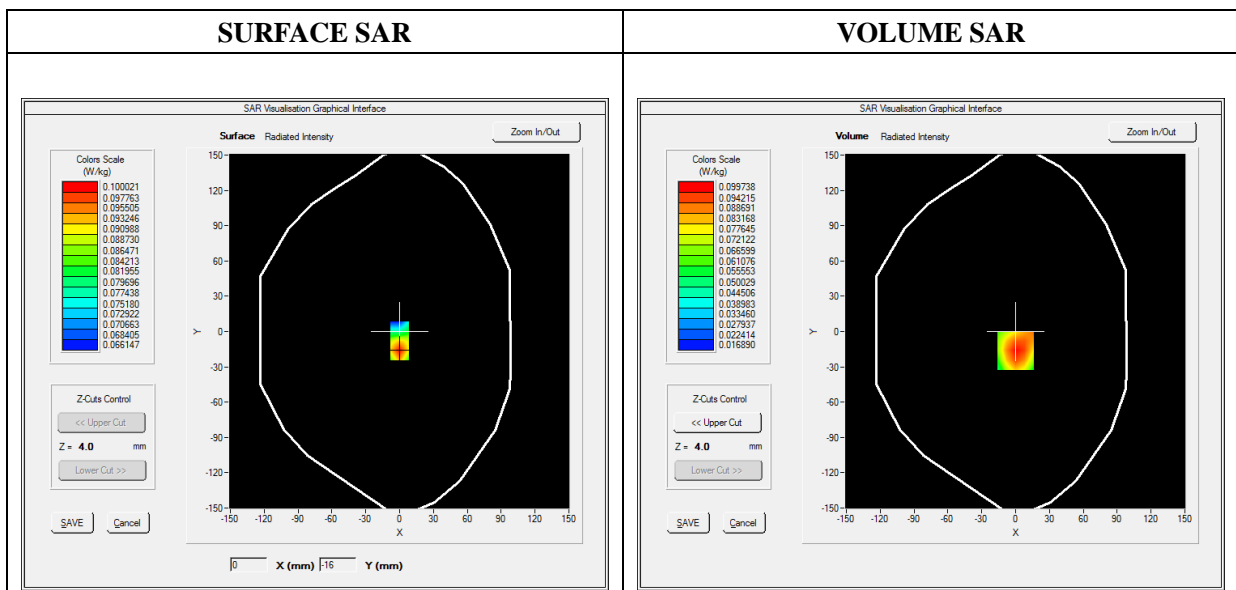
E-field Probe: SSE5- SN 09/13 EP168; ConvF: 6.93; Calibrated: 2020-05-22

A. Experimental conditions

Area Scan	dx=8mm dy=8mm
Zoom Scan	dx=8mm dy=8mm dz=5mm
Phantom	Flat Plane
Device Position	Back
Band	LTE Band 5
Channels	QPSK, 10MHz, 1RB,Middle
Signal	Duty Cycle 1:1

B. SAR Measurement Results

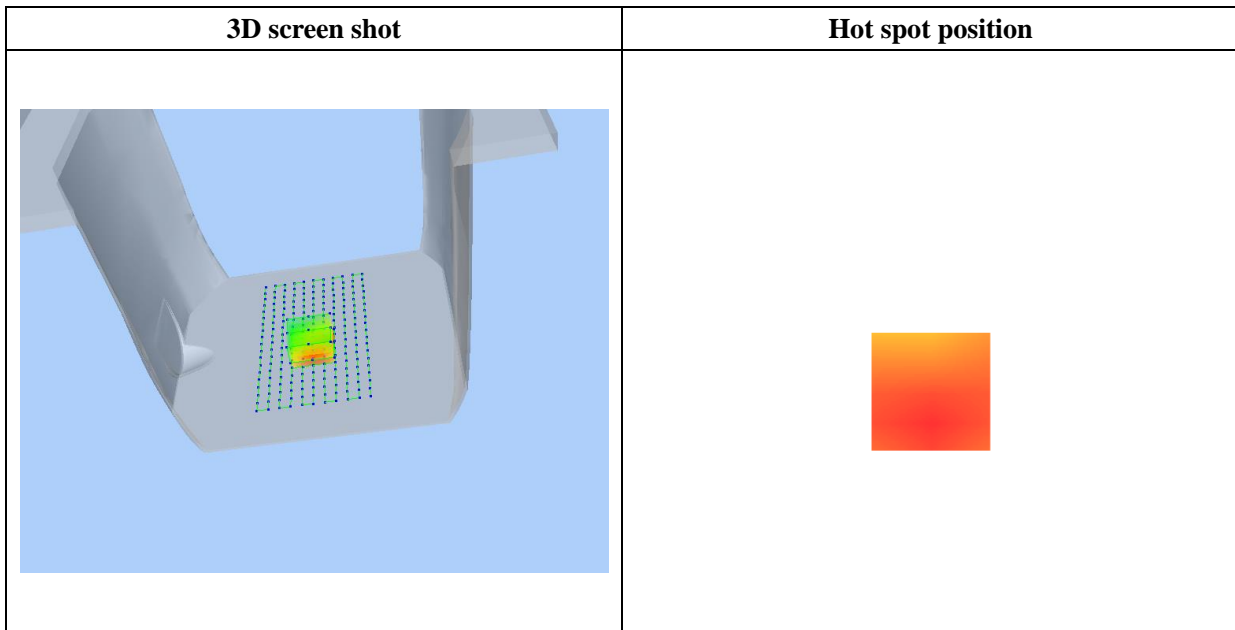
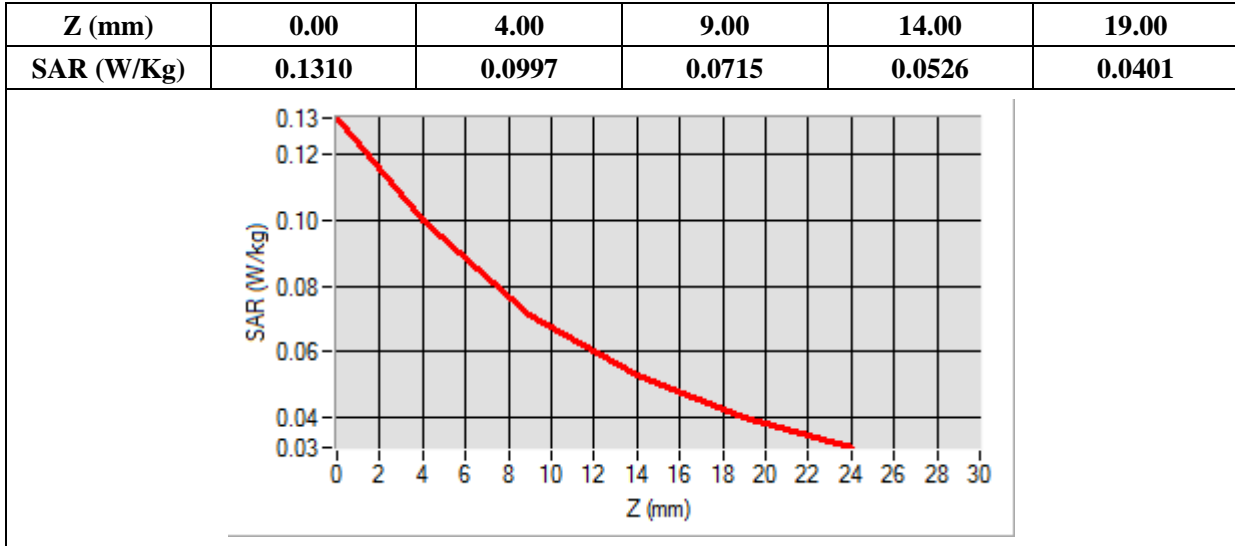
Frequency (MHz)	836.500000
Relative Permittivity (real part)	42.430271
Conductivity (S/m)	0.8768312
Power Variation (%)	0.100000
Ambient Temperature	21.5
Liquid Temperature	21.5



Maximum location: X=0.00, Y=-16.00

SAR Peak: 0.13 W/kg

SAR 10g (W/Kg)	0.066638
SAR 1g (W/Kg)	0.095165



MEASUREMENT 97

Type: Phone measurement (Complete)

Date of measurement: 2020-12-23

Measurement duration: 12 minutes 3 seconds

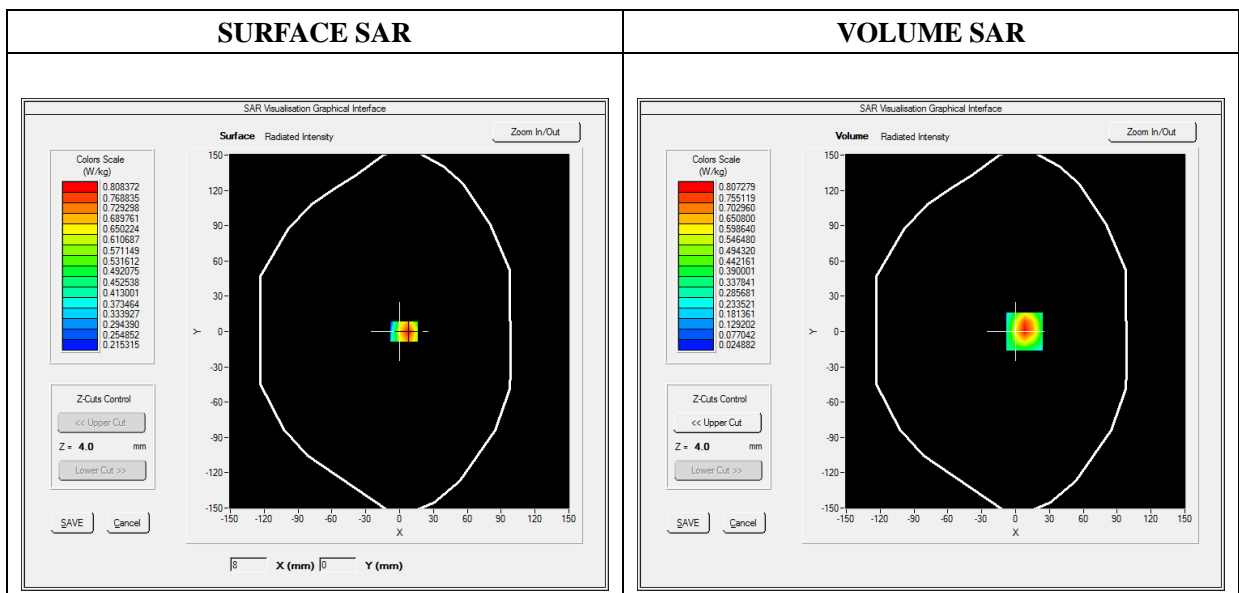
E-field Probe: SSE5- SN 09/13 EP168; ConvF: 5.37; Calibrated: 2020-05-22

A. Experimental conditions

Area Scan	dx=8mm dy=8mm
Zoom Scan	dx=5mm dy=5mm dz=5mm
Phantom	Flat Plane
Device Position	Back
Band	LTE Band 7
Channels	QPSK, 20MHz, 1RB,Middle
Signal	Duty Cycle 1:1

B. SAR Measurement Results

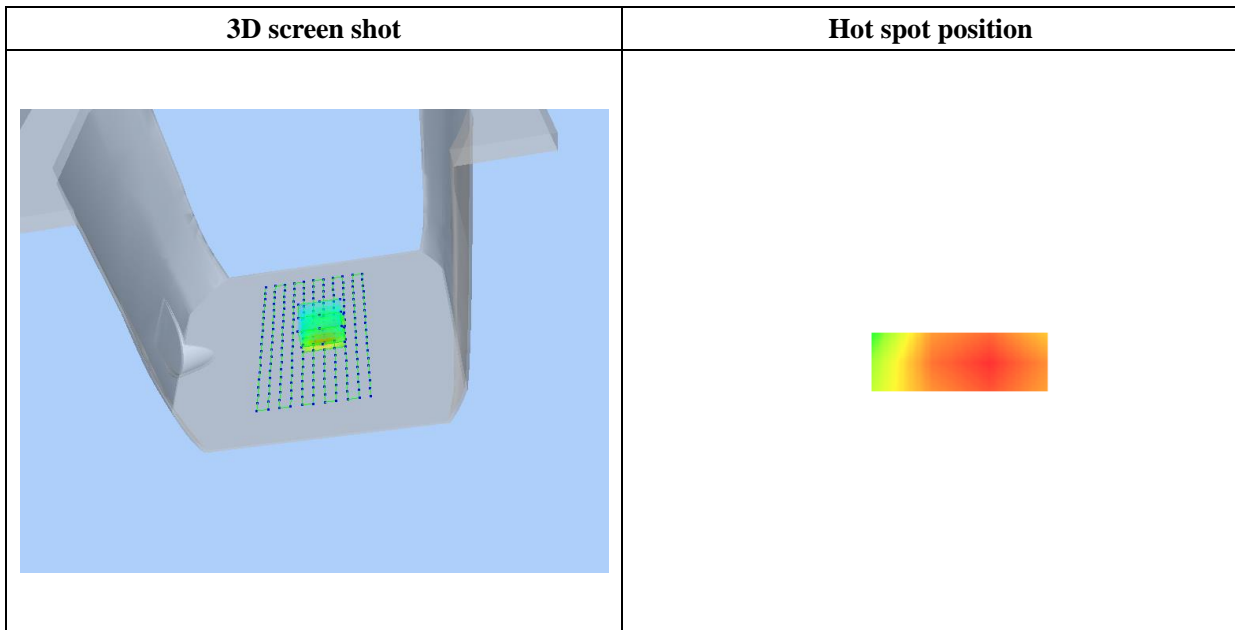
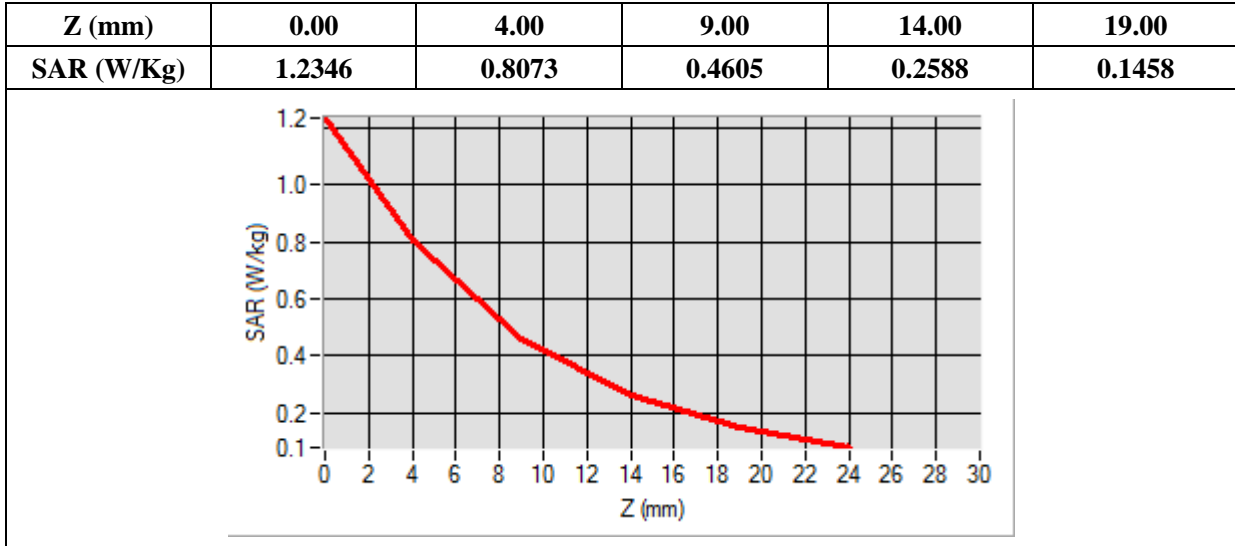
Frequency (MHz)	2535.000000
Relative Permittivity (real part)	38.964820
Conductivity (S/m)	1.932062
Power Variation (%)	-0.450000
Ambient Temperature	21.4
Liquid Temperature	21.4



Maximum location: X=8.00, Y=0.00

SAR Peak: 1.25 W/kg

SAR 10g (W/Kg)	0.393911
SAR 1g (W/Kg)	0.752606



MEASUREMENT 103

Type: Phone measurement (Complete)

Date of measurement: 2020-12-29

Measurement duration: 12 minutes 3 seconds

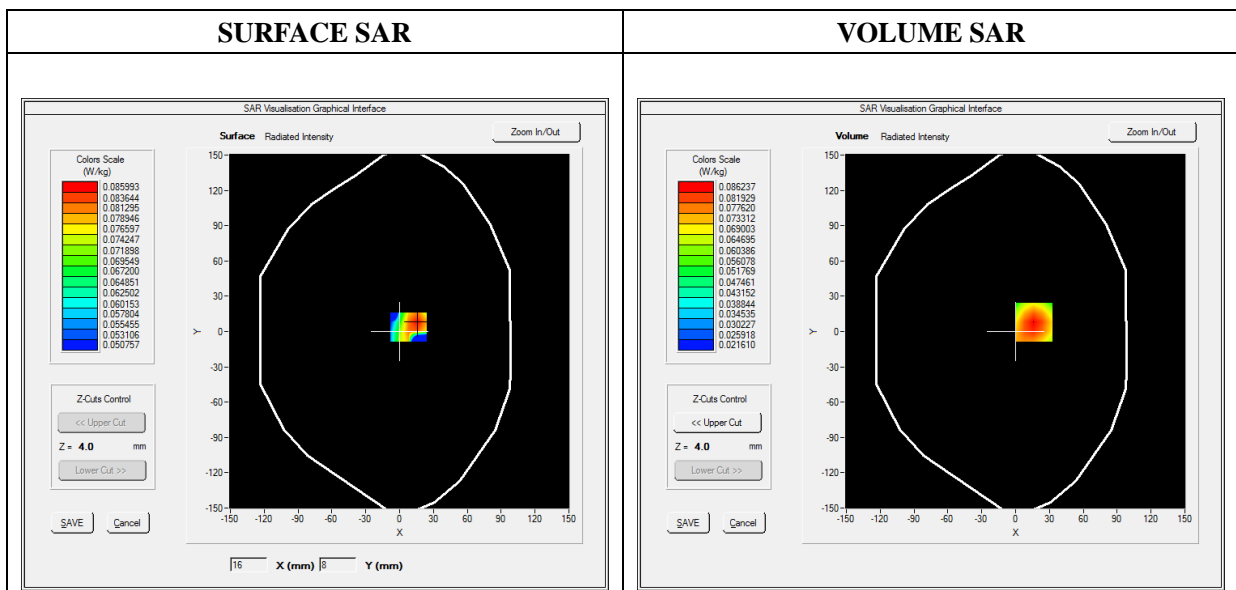
E-field Probe: SSE5- SN 09/13 EP168; ConvF: 6.99; Calibrated: 2020-05-22

A. Experimental conditions

Area Scan	dx=8mm dy=8mm
Zoom Scan	dx=8mm dy=8mm dz=5mm
Phantom	Flat Plane
Device Position	Back
Band	LTE Band 12
Channels	QPSK, 10MHz, 1RB,Low
Signal	Duty Cycle 1:1

B. SAR Measurement Results

Frequency (MHz)	704.000000
Relative Permittivity (real part)	42.935843
Conductivity (S/m)	0.839026
Power Variation (%)	-0.070000
Ambient Temperature	21.5
Liquid Temperature	21.5

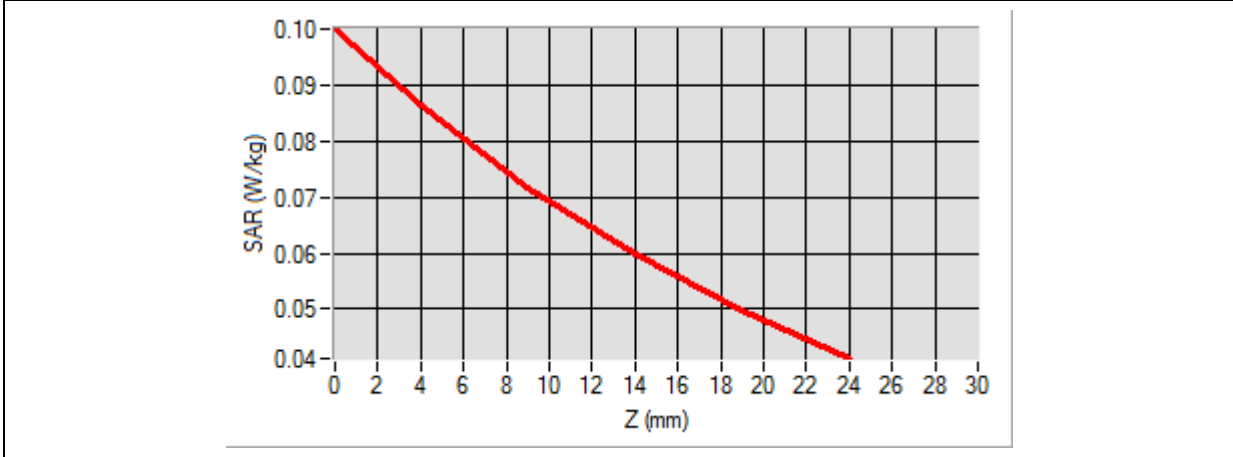


Maximum location: X=16.00, Y=8.00

SAR Peak: 0.10 W/kg

SAR 10g (W/Kg)	0.066905
SAR 1g (W/Kg)	0.085691

Z (mm)	0.00	4.00	9.00	14.00	19.00
SAR (W/Kg)	0.1000	0.0862	0.0717	0.0597	0.0498



3D screen shot	Hot spot position
<p>A 3D perspective view of a grey device with a grid of green dots on its surface. A color-coded hot spot is visible, with red and yellow areas indicating higher SAR values.</p>	<p>A close-up of the hot spot area, showing a color gradient from yellow to red, indicating the highest SAR values.</p>

MEASUREMENT 109

Type: Phone measurement (Complete)

Date of measurement: 2020-12-29

Measurement duration: 12 minutes 3 seconds

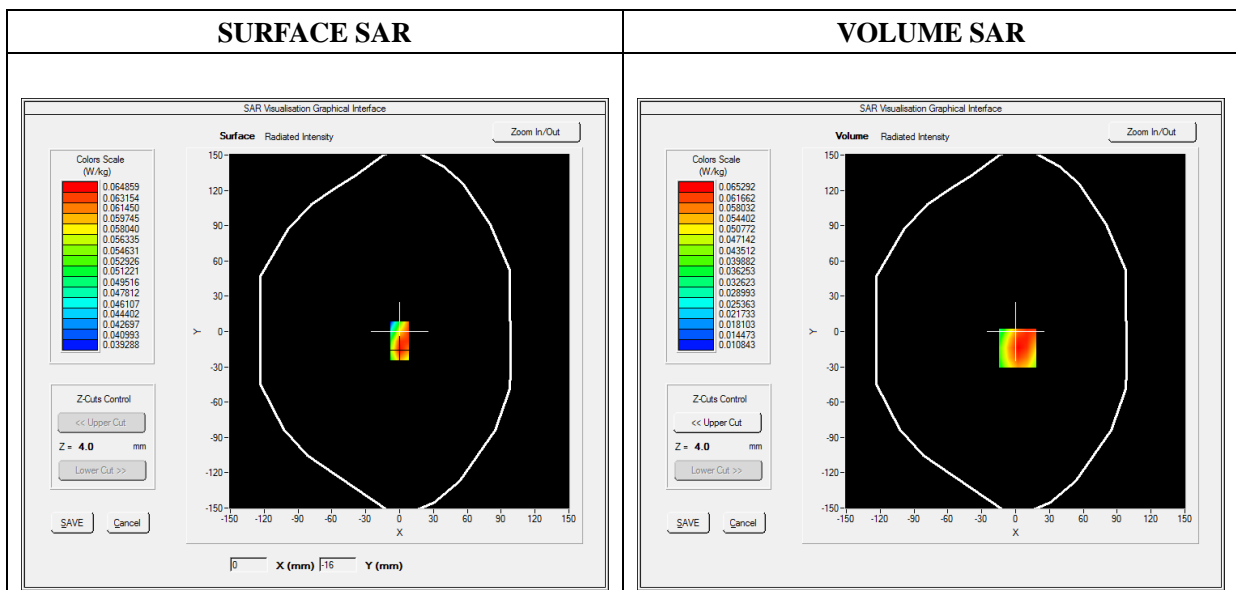
E-field Probe: SSE5- SN 09/13 EP168; ConvF: 6.99; Calibrated: 2020-05-22

A. Experimental conditions

Area Scan	dx=8mm dy=8mm
Zoom Scan	dx=8mm dy=8mm dz=5mm
Phantom	Flat Plane
Device Position	Back
Band	LTE Band 17
Channels	QPSK, 10MHz, 1RB,Low
Signal	Duty Cycle 1:1

B. SAR Measurement Results

Frequency (MHz)	709.000000
Relative Permittivity (real part)	42.935843
Conductivity (S/m)	0.839026
Power Variation (%)	0.470000
Ambient Temperature	21.5
Liquid Temperature	21.5

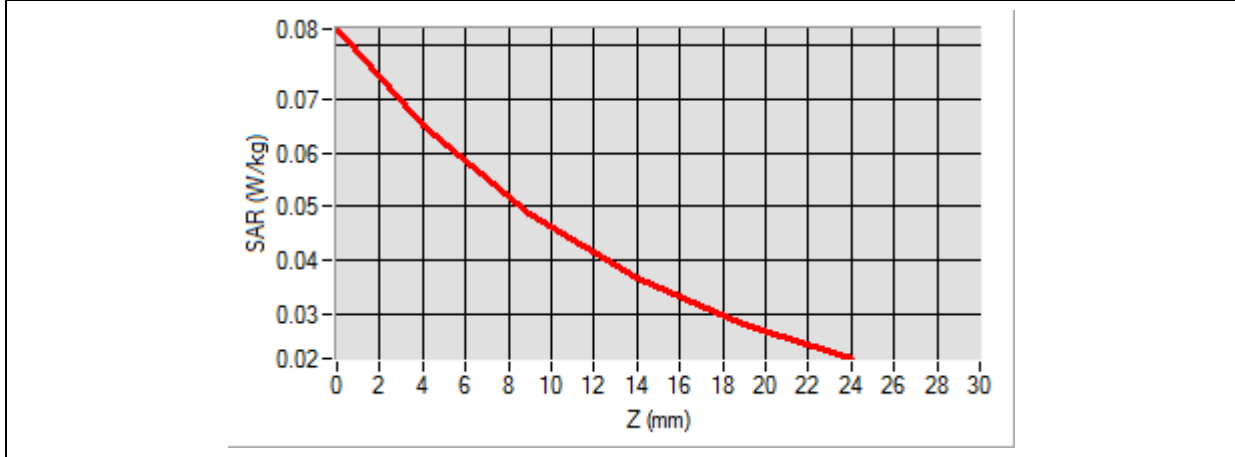


Maximum location: X=2.00, Y=-14.00

SAR Peak: 0.08 W/kg

SAR 10g (W/Kg)	0.049072
SAR 1g (W/Kg)	0.067158

Z (mm)	0.00	4.00	9.00	14.00	19.00
SAR (W/Kg)	0.0832	0.0653	0.0485	0.0366	0.0281



3D screen shot	Hot spot position
<p>A 3D perspective view of a grey device. A grid of green dots is overlaid on its surface. A small, multi-colored (green, yellow, orange, red) hot spot is visible within the grid, indicating the location of maximum SAR exposure.</p>	<p>A square color gradient representing the hot spot position. The color transitions from yellow at the top to red at the bottom, indicating the intensity of the SAR exposure.</p>

MEASUREMENT 115

Type: Phone measurement (Complete)

Date of measurement: 2020-12-23

Measurement duration: 12 minutes 3 seconds

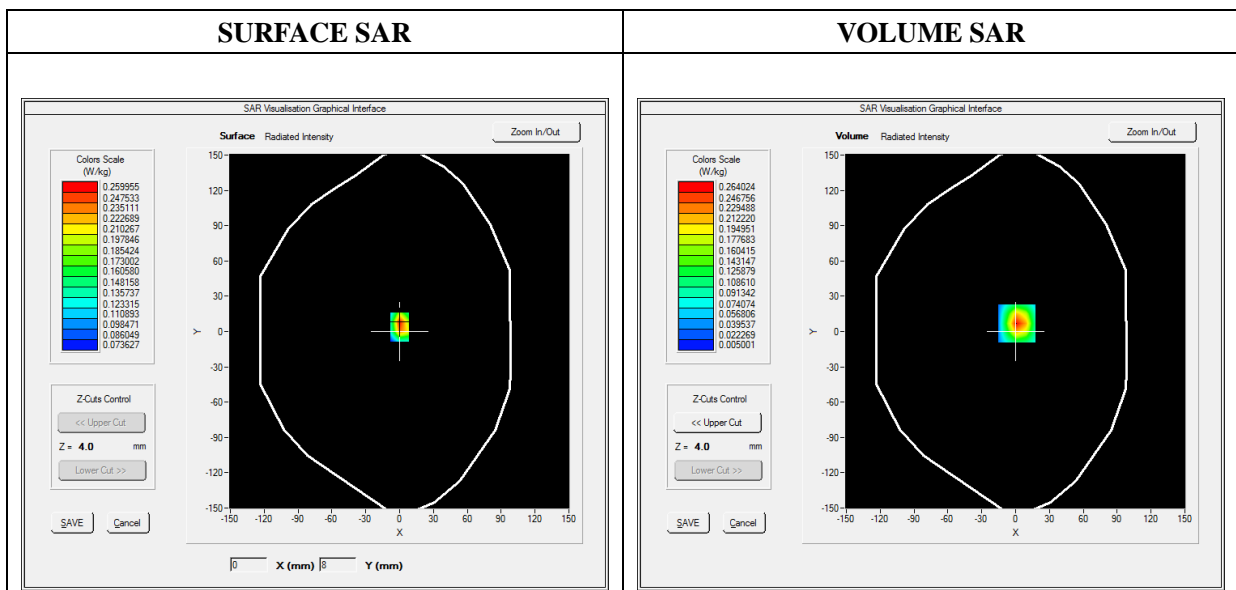
E-field Probe: SSE5- SN 09/13 EP168; ConvF: 5.64; Calibrated: 2020-05-22

A. Experimental conditions

Area Scan	dx=8mm dy=8mm
Zoom Scan	dx=5mm dy=5mm dz=5mm
Phantom	Flat Plane
Device Position	Back
Band	WiFi_802.11b
Channels	Low
Signal	Duty Cycle 1:1

B. SAR Measurement Results

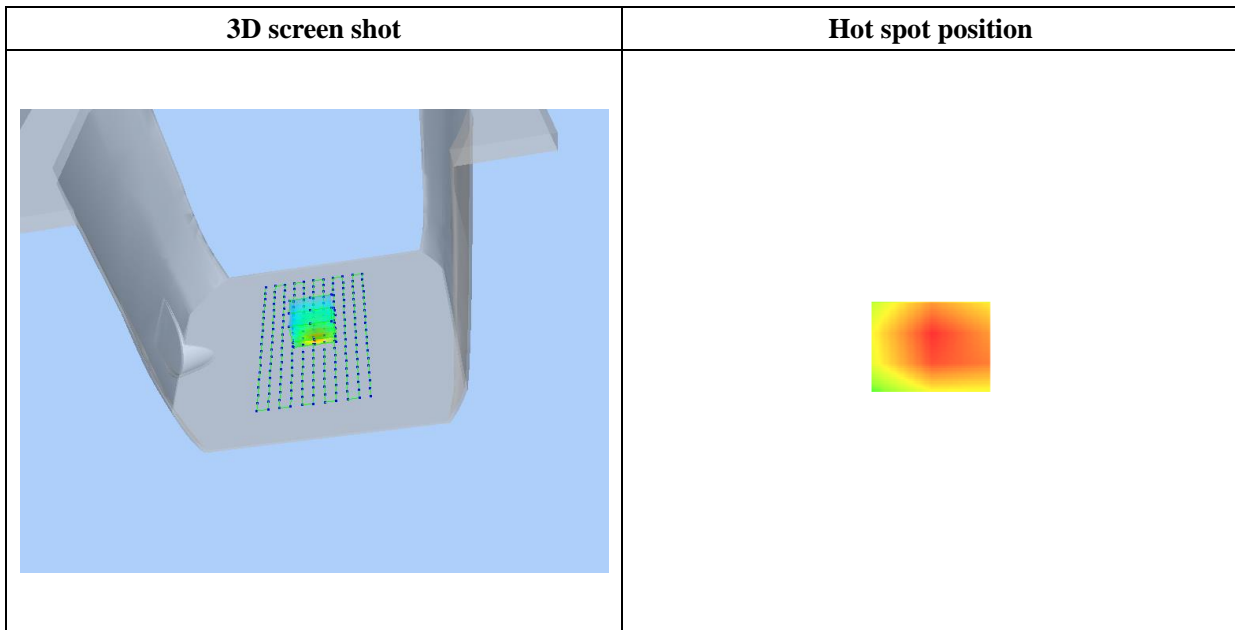
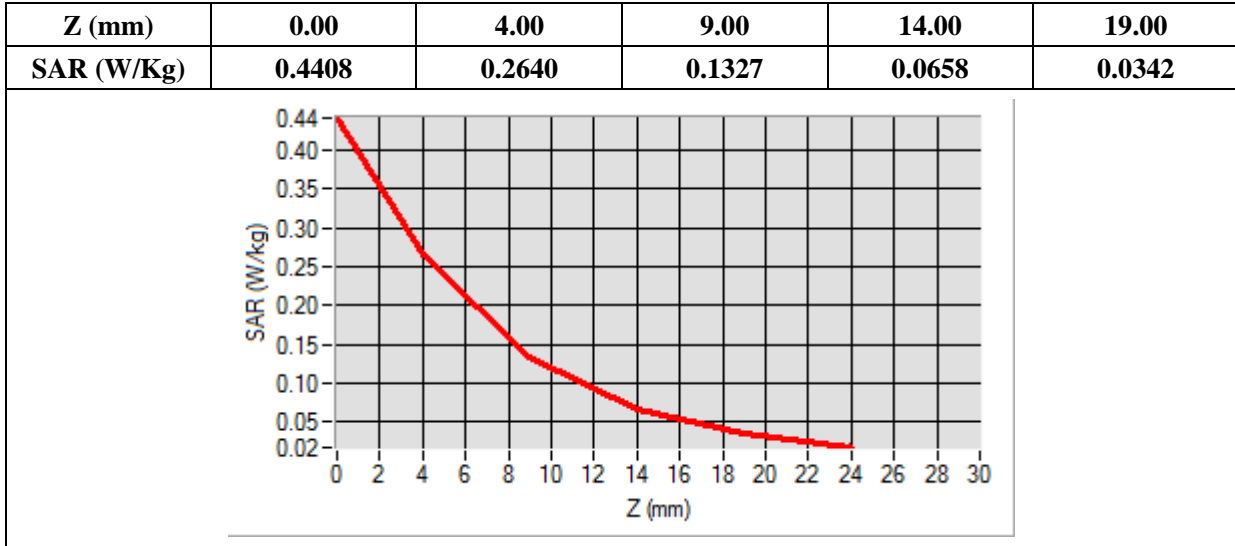
Frequency (MHz)	2412.000000
Relative Permittivity (real part)	39.905111
Conductivity (S/m)	1.790286
Power Variation (%)	0.330000
Ambient Temperature	21.4
Liquid Temperature	21.4



Maximum location: X=1.00, Y=7.00

SAR Peak: 0.45 W/kg

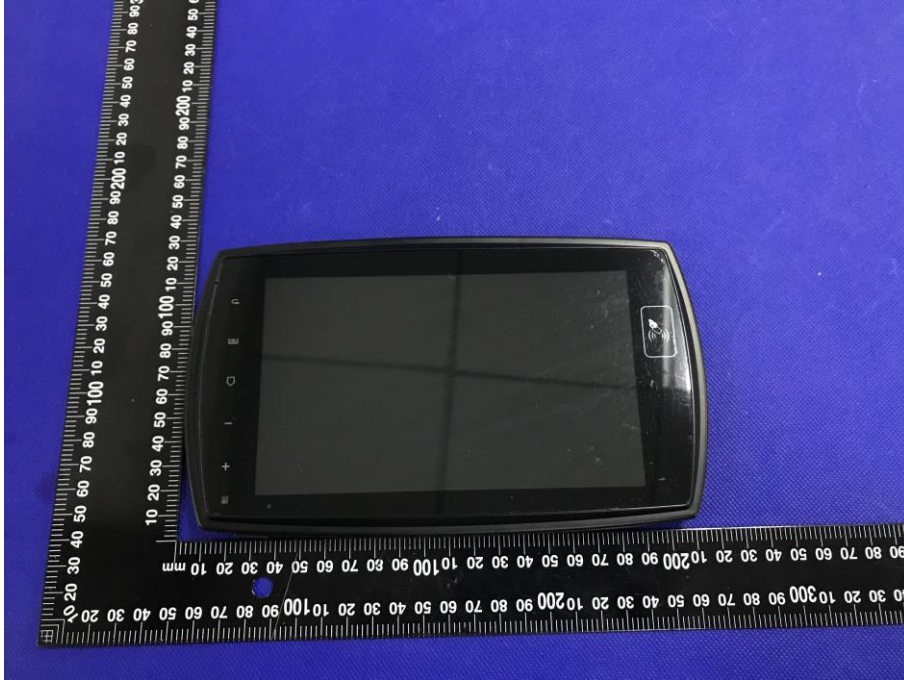
SAR 10g (W/Kg)	0.112781
SAR 1g (W/Kg)	0.241726



Annex C. EUT Photos

MDT760

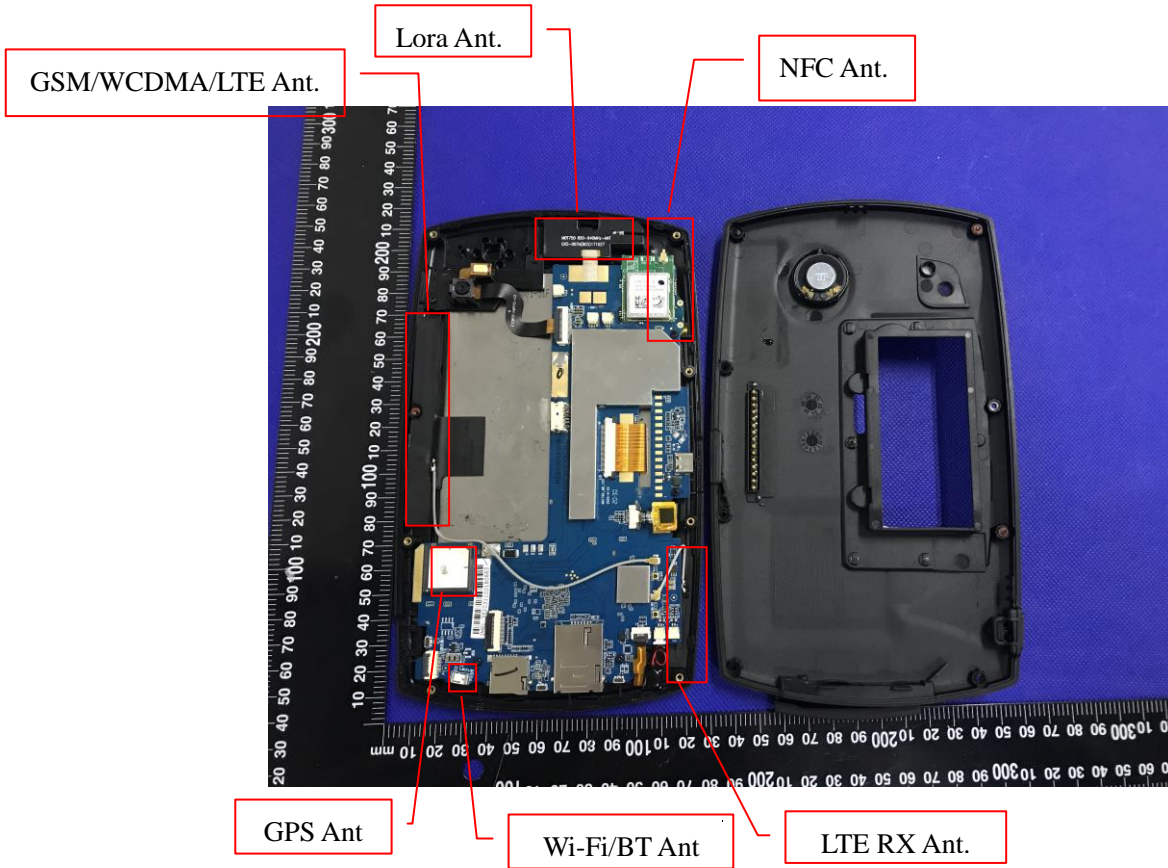
EUT View Front



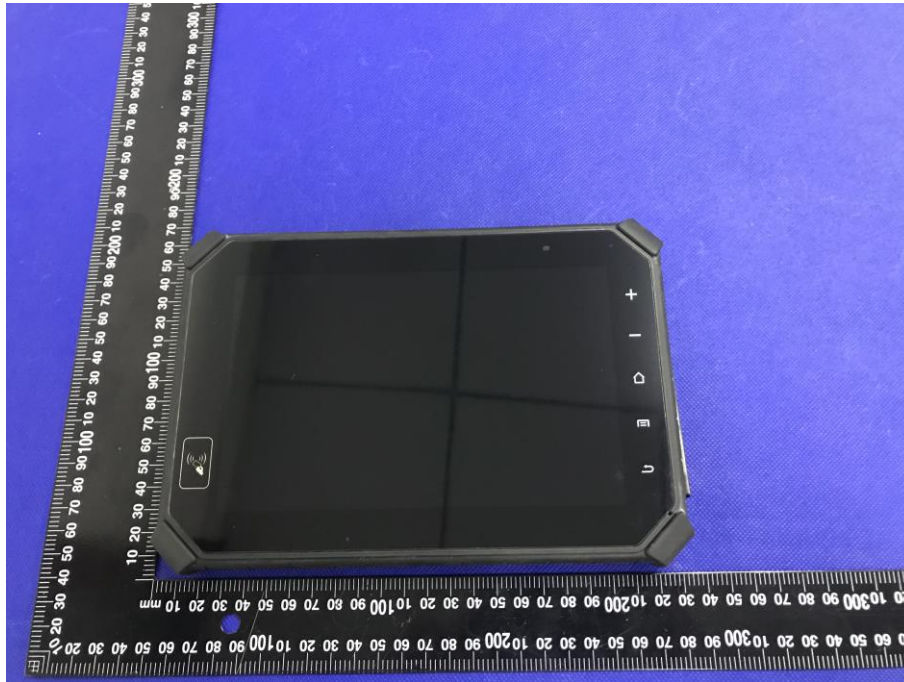
EUT View Back



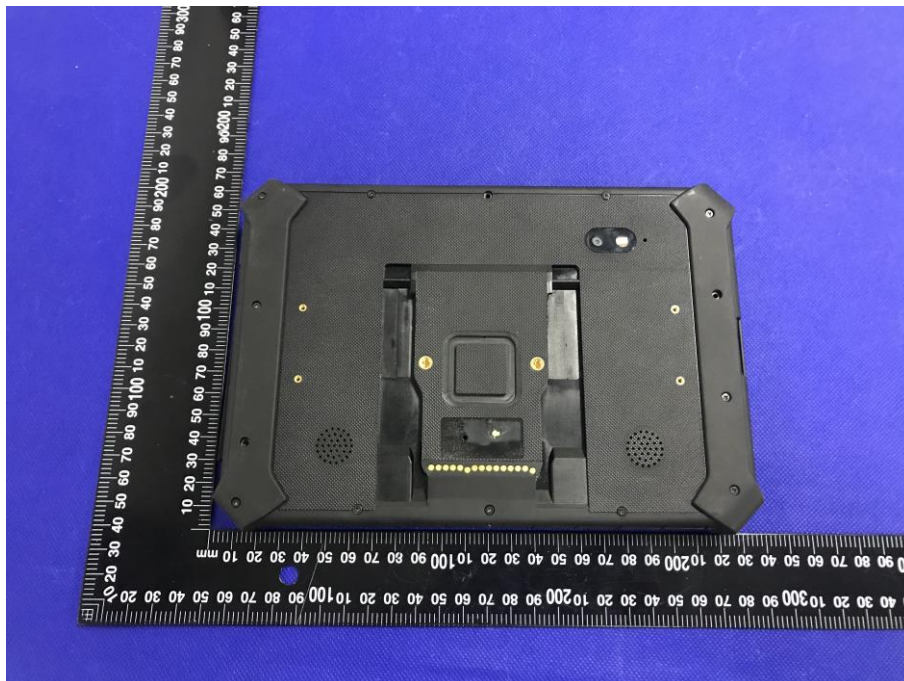
Antenna View



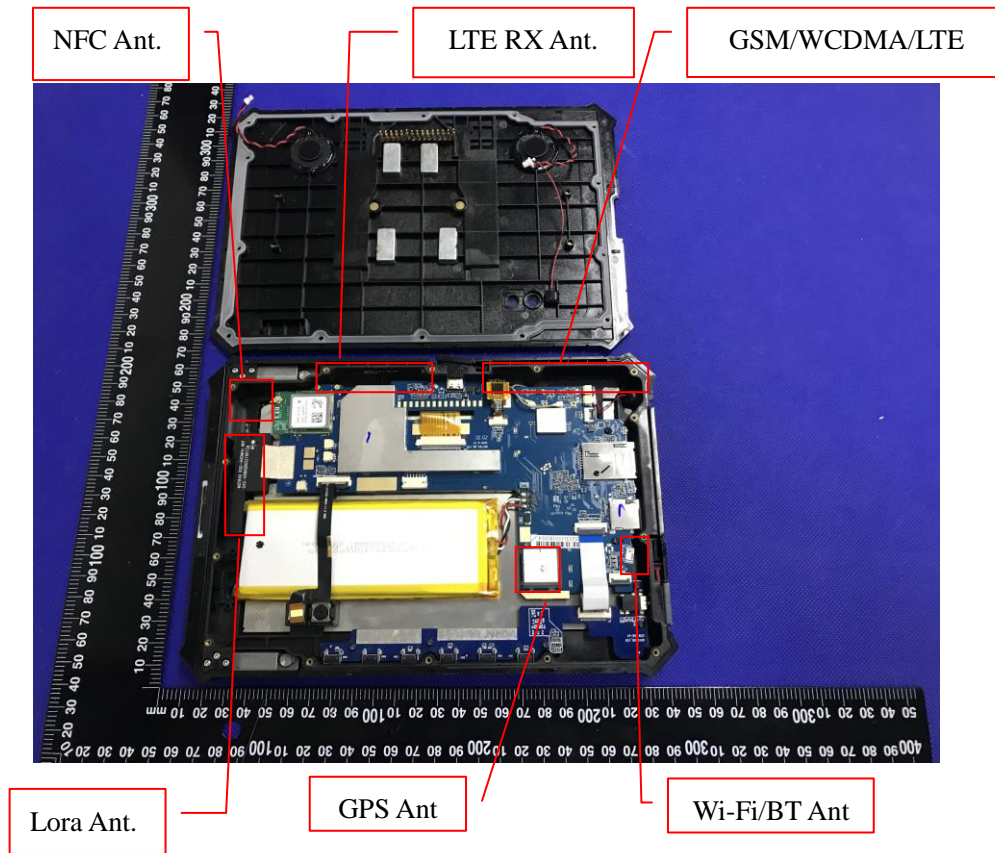
MDT860
EUT View Front



EUT View Back



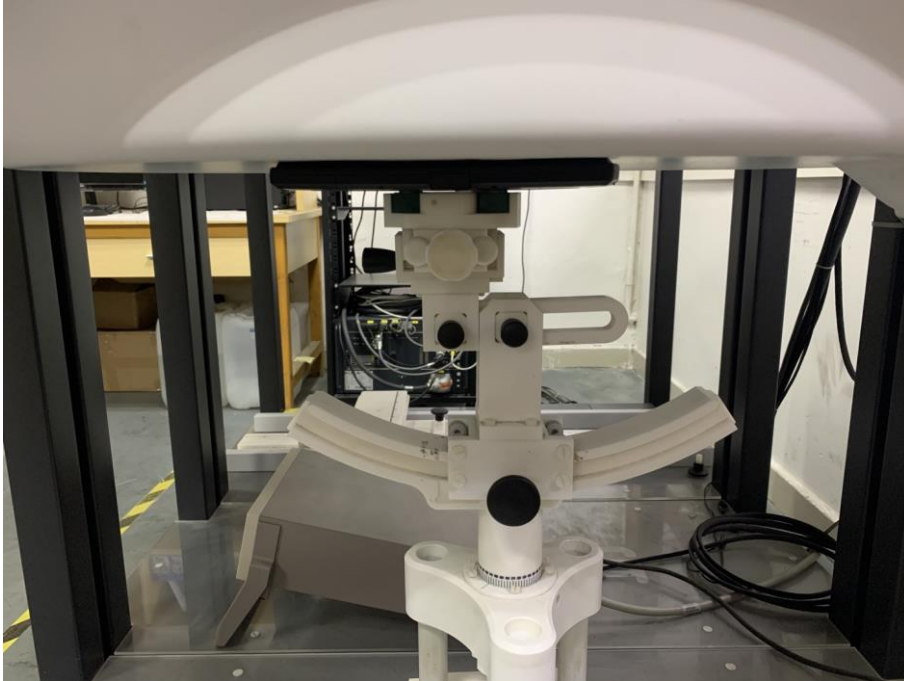
Antenna View



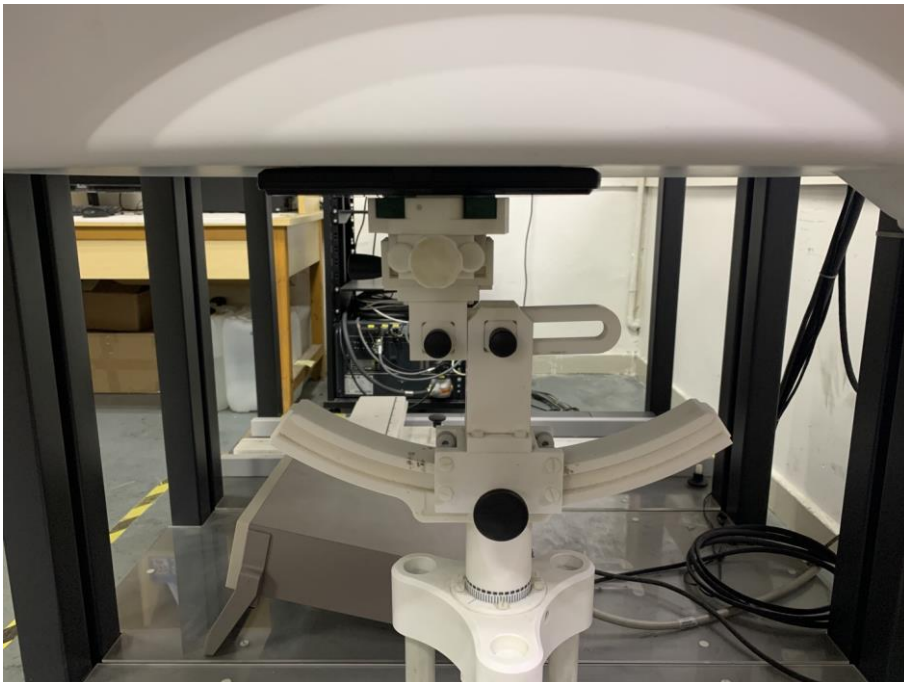
Annex D. Test Setup Photos

Body mode Exposure Conditions MDT760 (Test distance: 0mm)

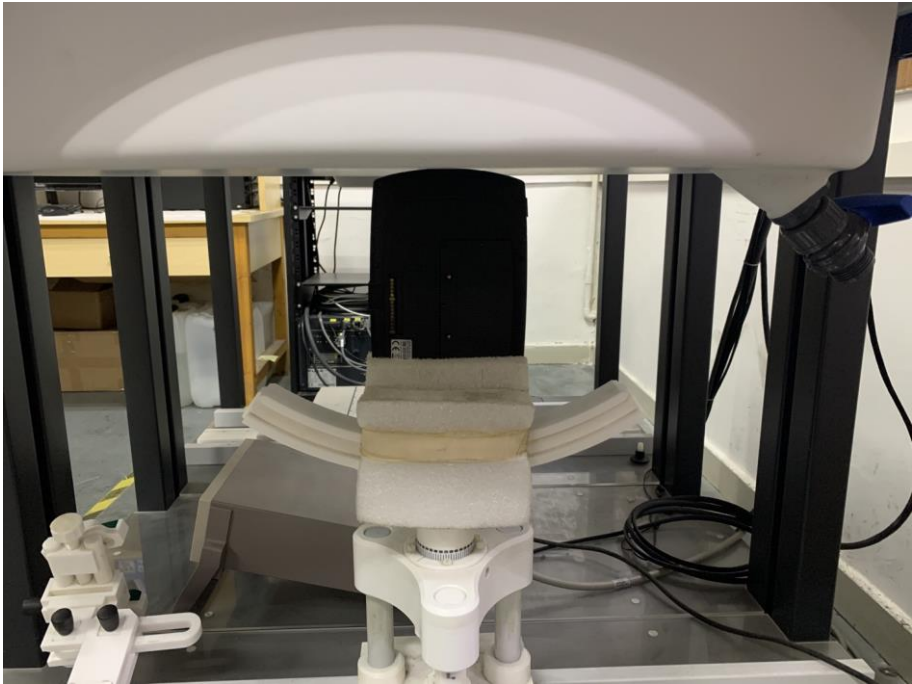
Body Front



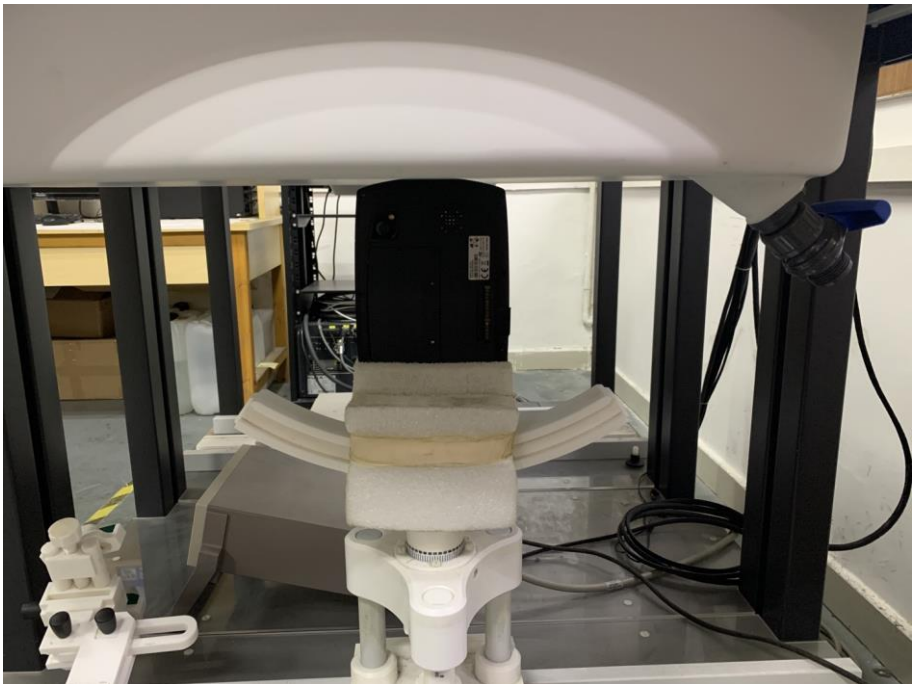
Body Back



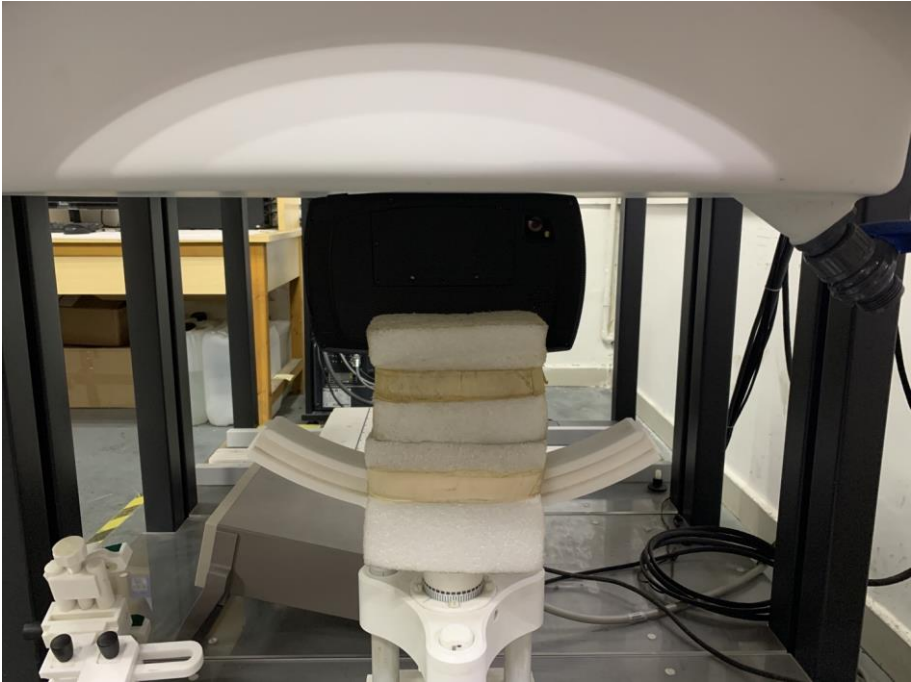
Body Right



Body Left



Body Top

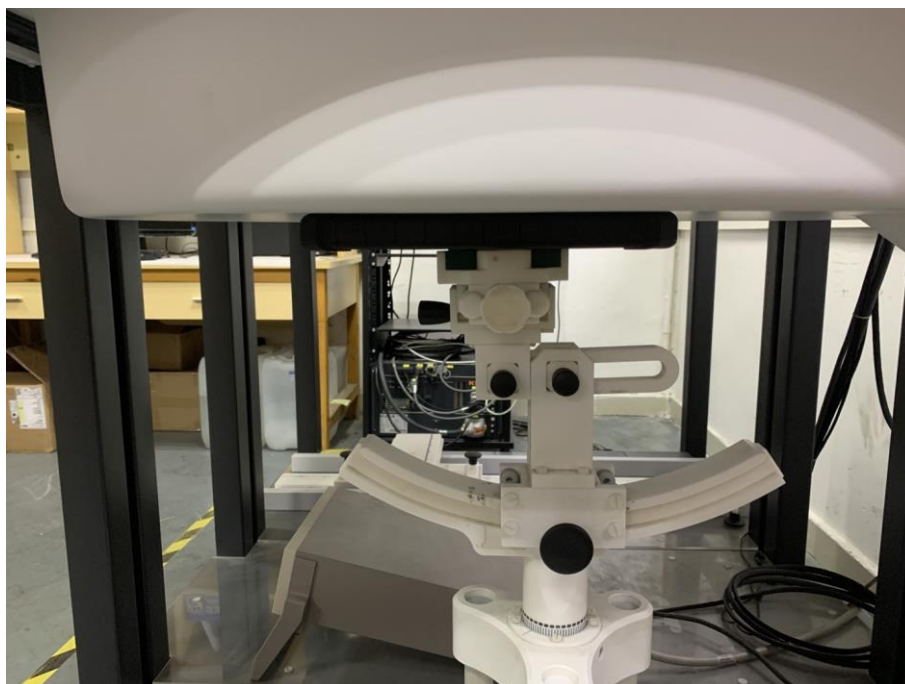


Body Bottom

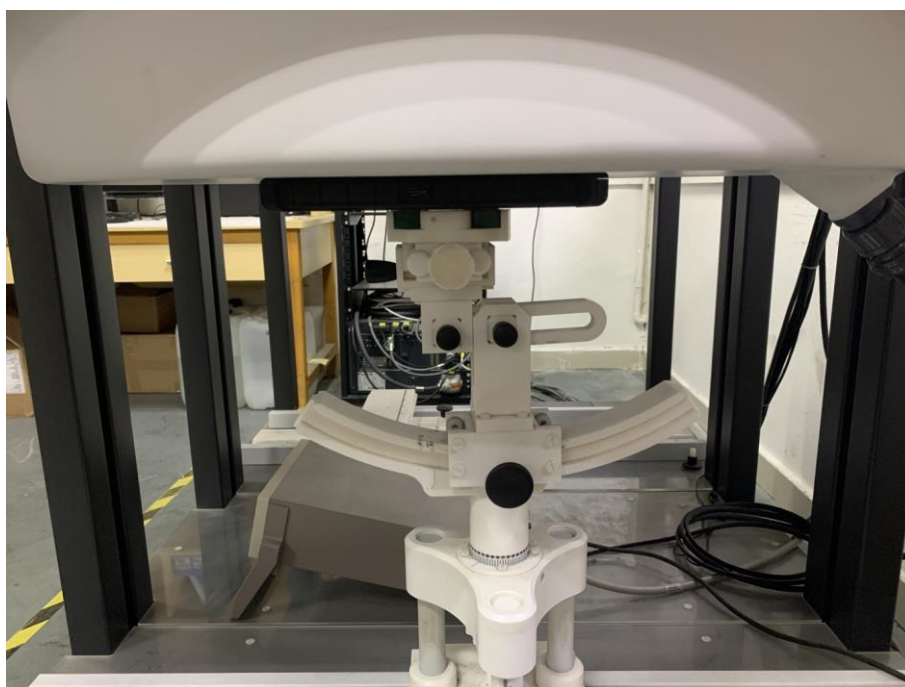


MDT860 (Test distance: 0mm)

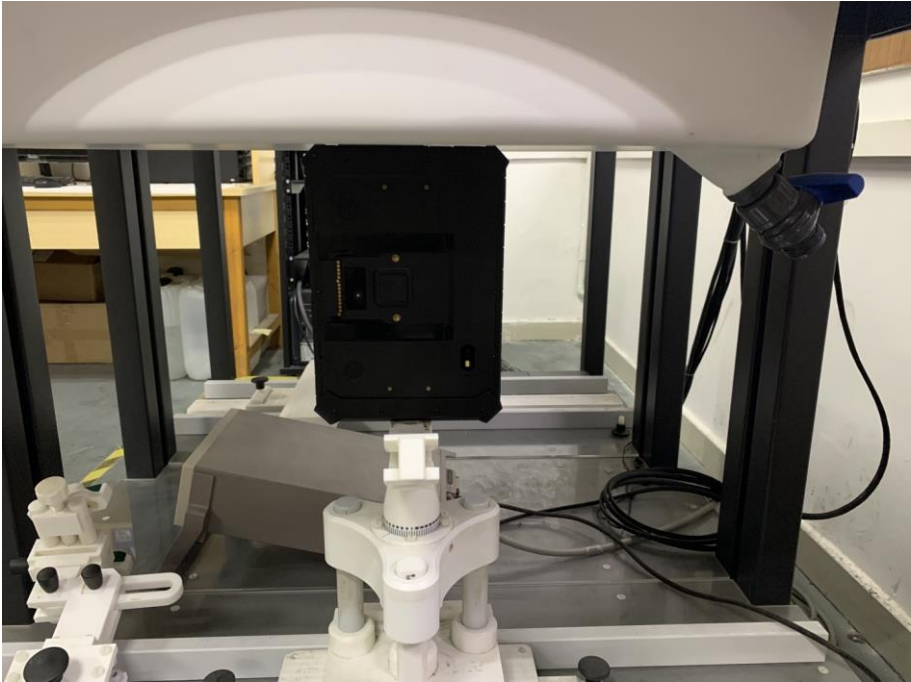
Body Front



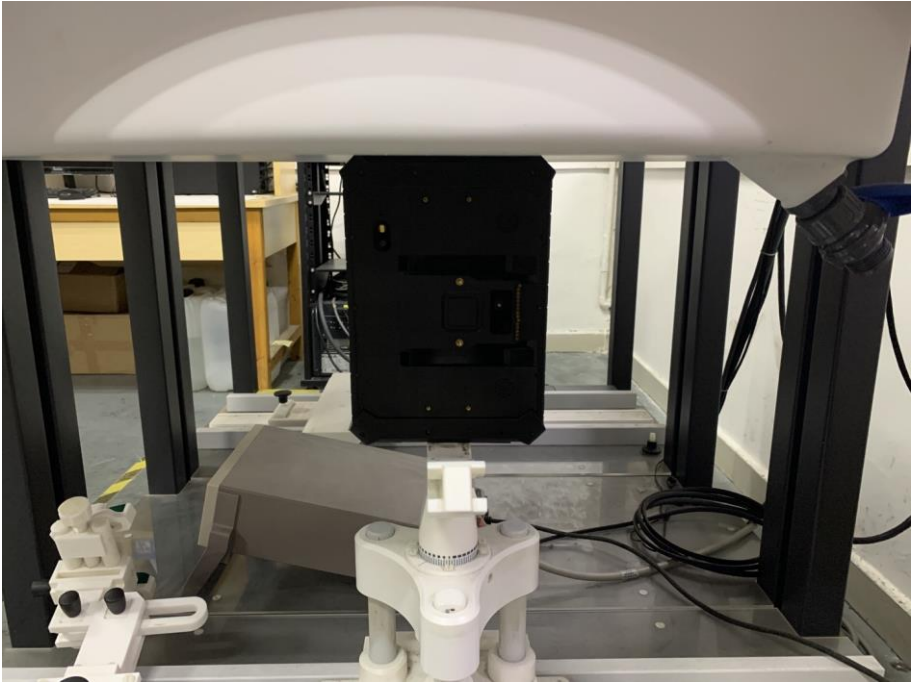
Body Back



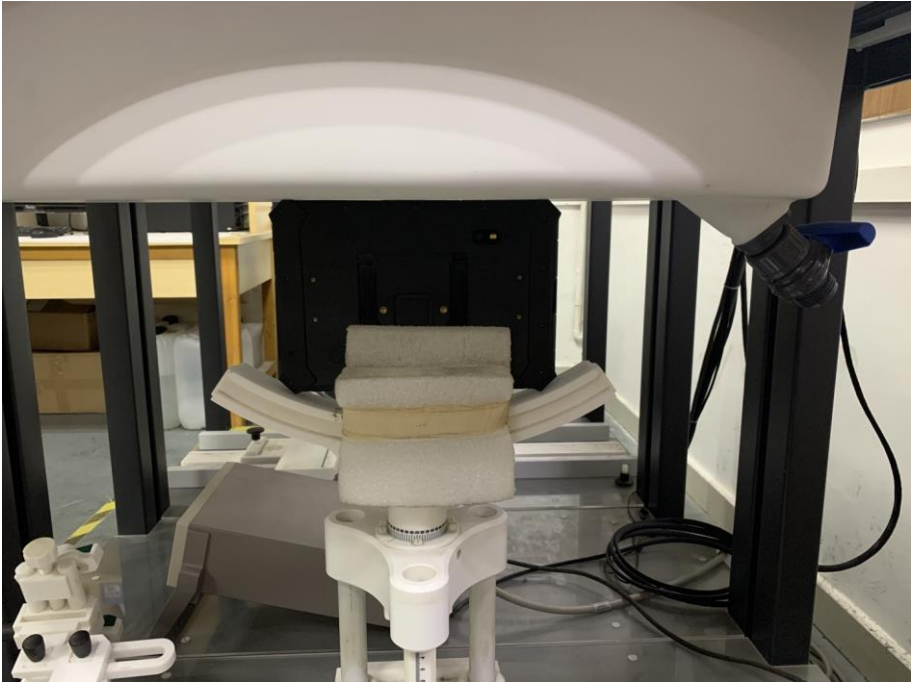
Body Right



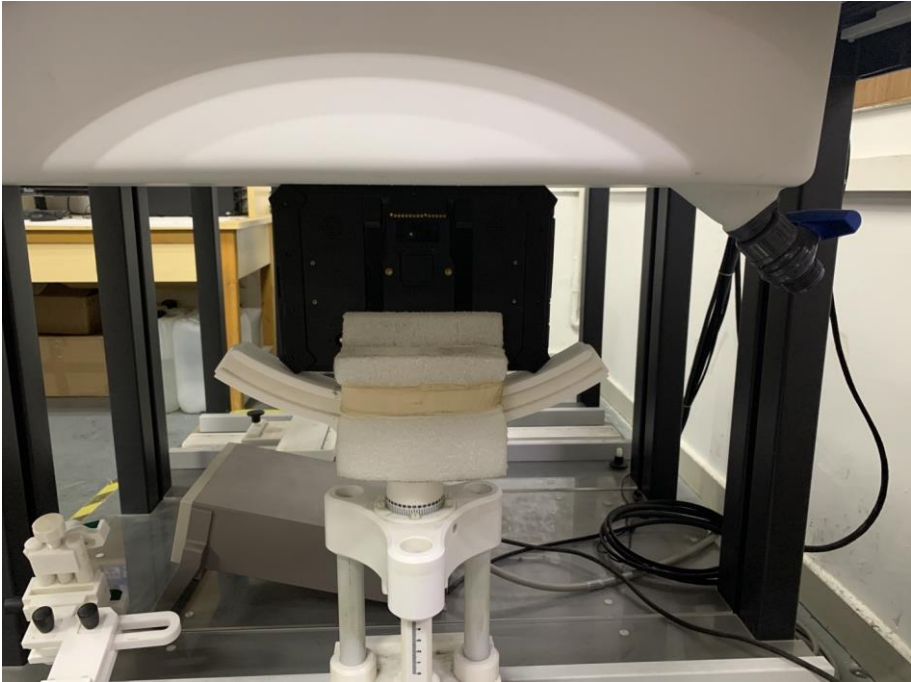
Body Left



Body Top



Body Bottom



Annex E. Calibration Certificate

Please refer to the exhibit for the calibration certificate

******* END OF REPORT *******