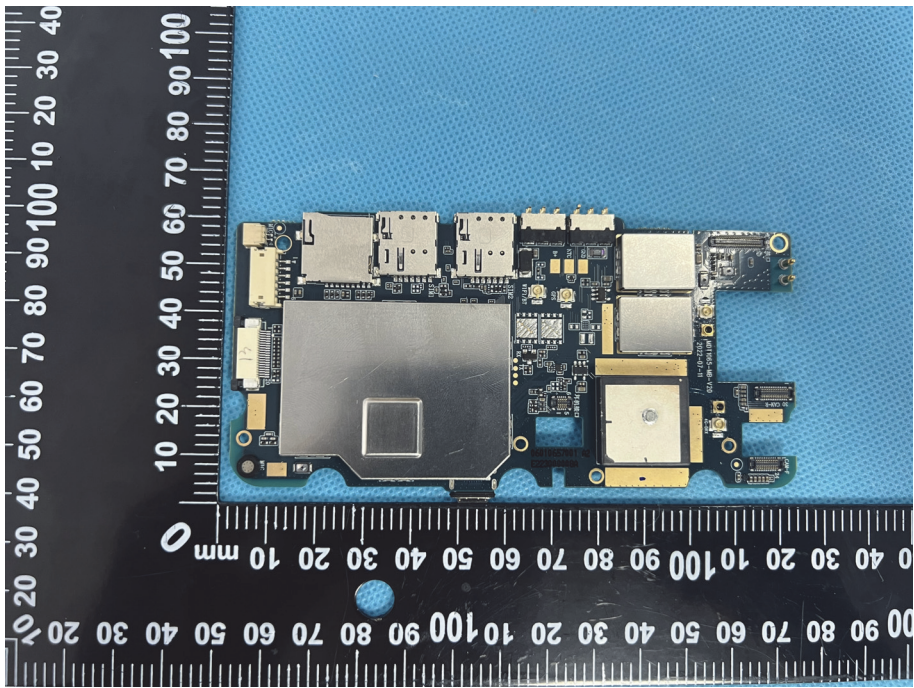
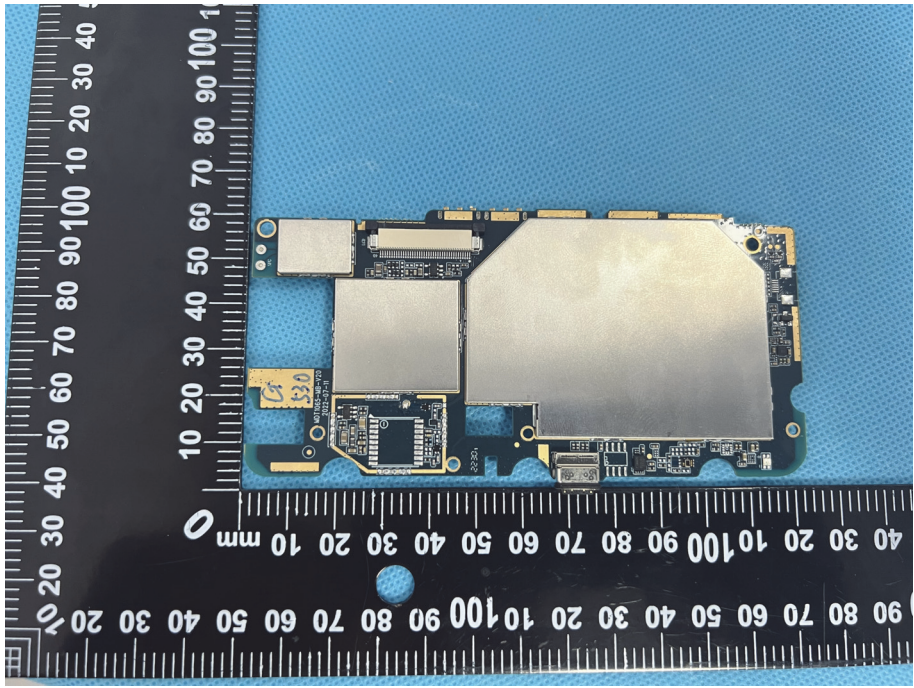
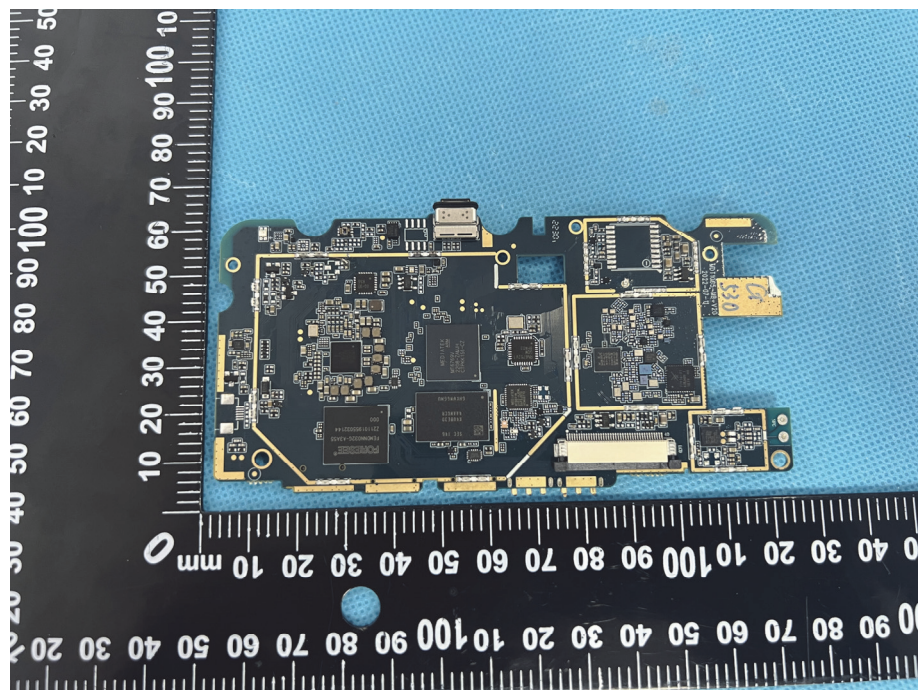


<p>Solder Board-Component View 5</p>	 A photograph of a soldered board component, labeled as View 5. The component is a complex printed circuit board (PCB) assembly with various electronic components, including a large central chip, several smaller components, and connectors. It is placed on a blue textured surface next to a black ruler with white markings. The ruler shows measurements in millimeters, with the component's length being approximately 100 mm and its width around 40 mm.
<p>Solder Board-Component View 6</p>	 A photograph of the same soldered board component, labeled as View 6. This view shows the component from a different angle, highlighting a large, rectangular, gold-colored component on the right side. The component is placed on a blue textured surface next to a black ruler with white markings. The ruler shows measurements in millimeters, with the component's length being approximately 100 mm and its width around 40 mm.

**Solder
Board-Component
View 7**



**Solder
Board-Component
View 8**

