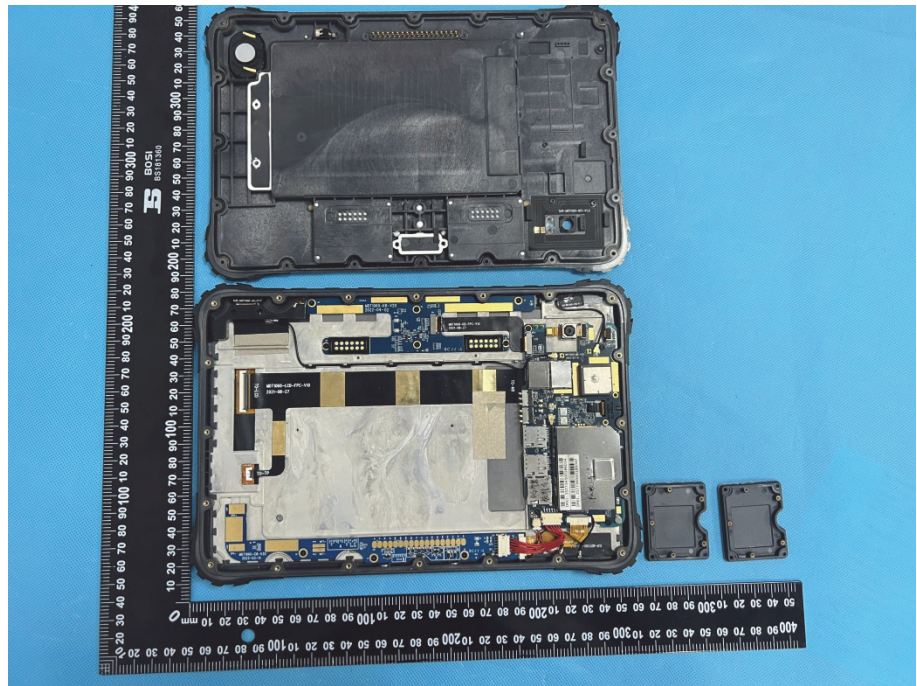
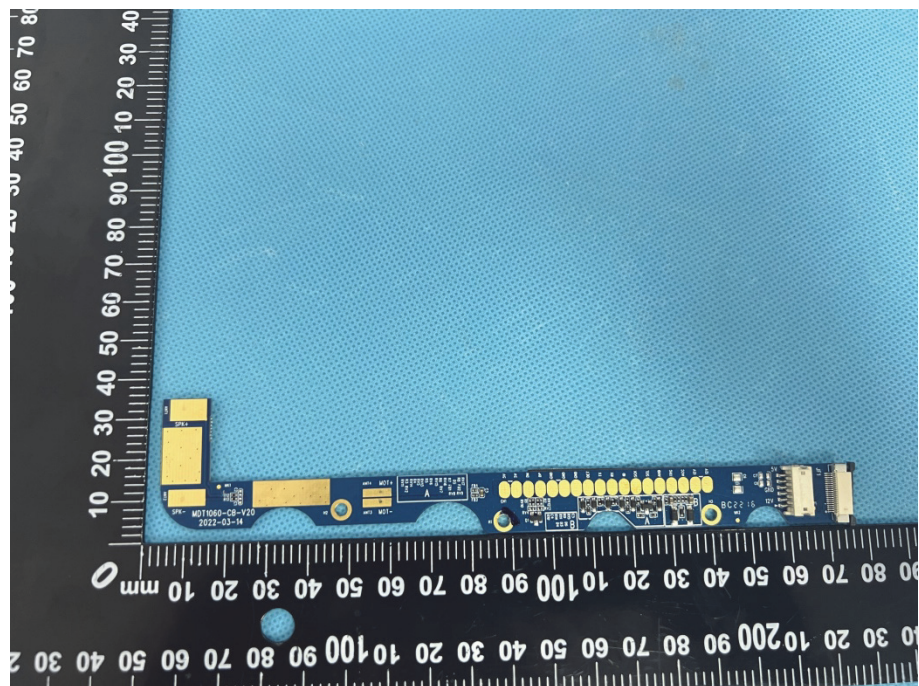


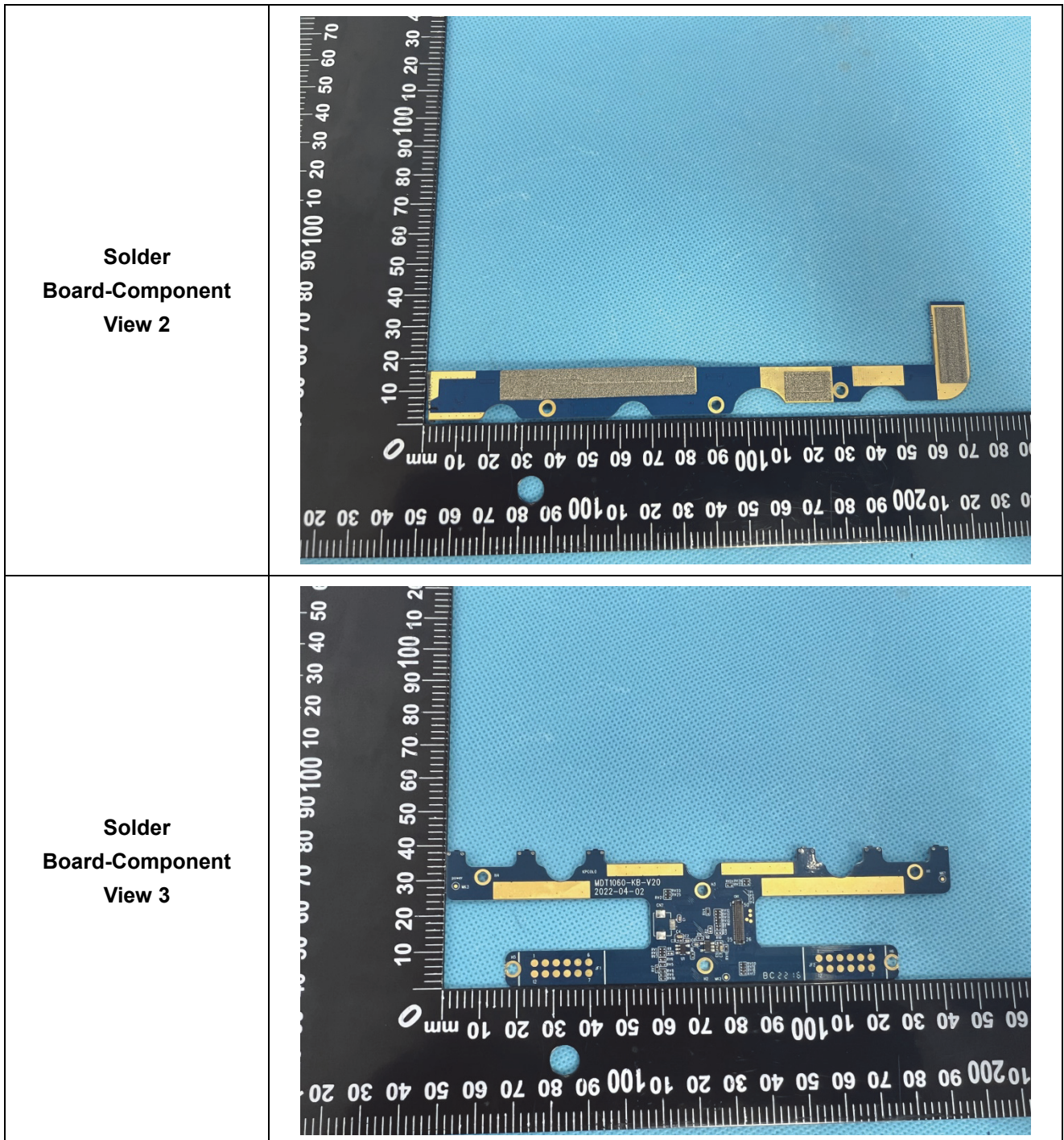
EXHIBIT 3 - EUT INTERNAL PHOTOGRAPHS

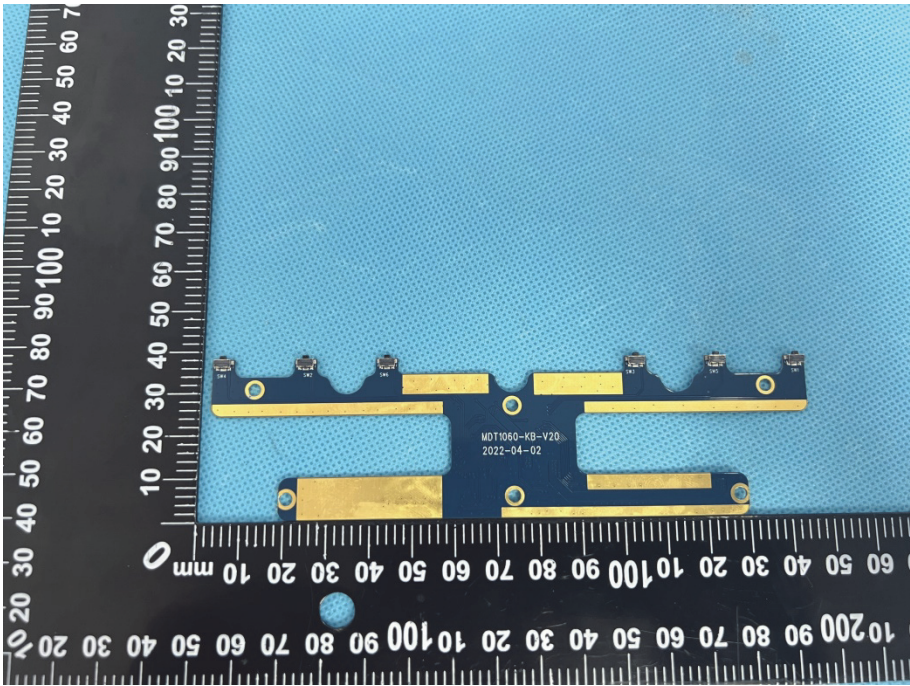
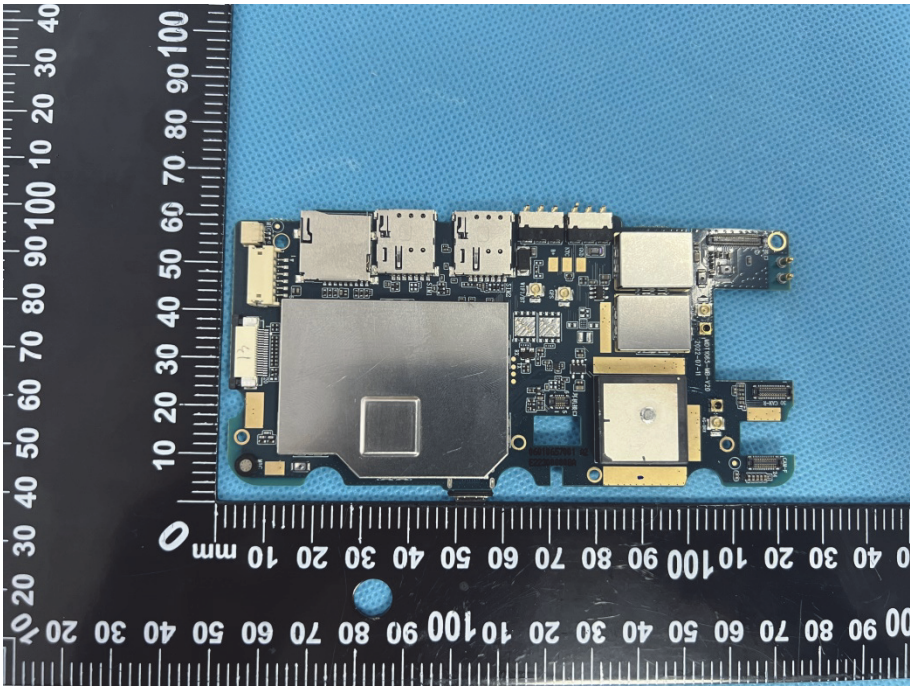
EUT Housing and Board View 1

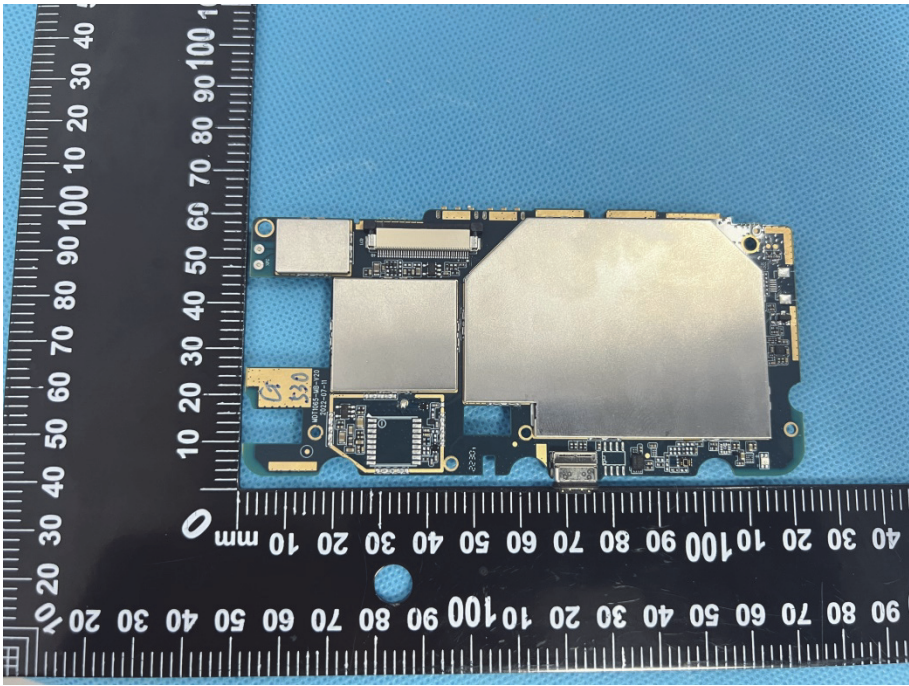
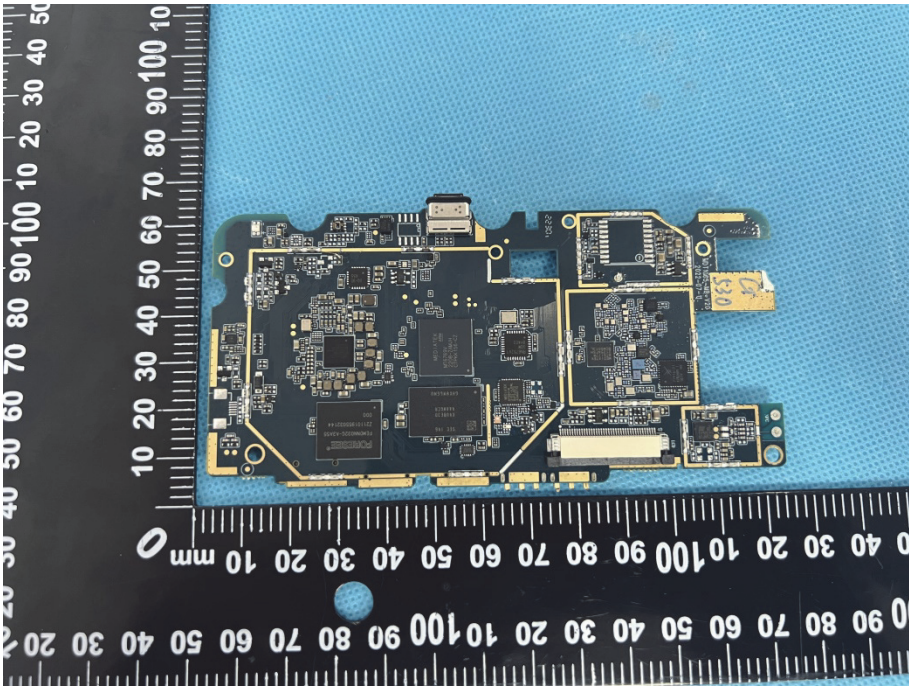


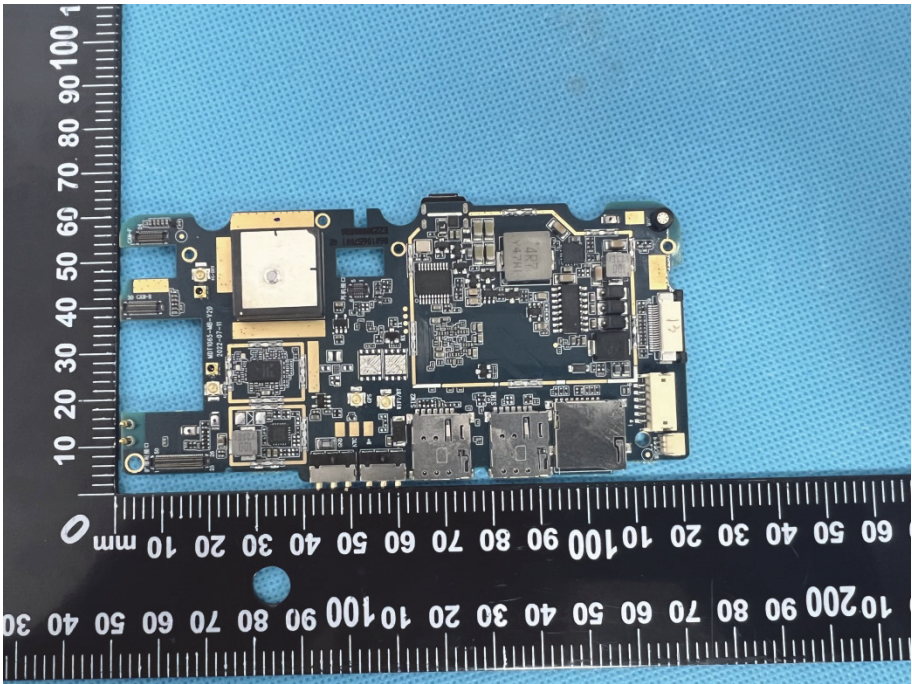
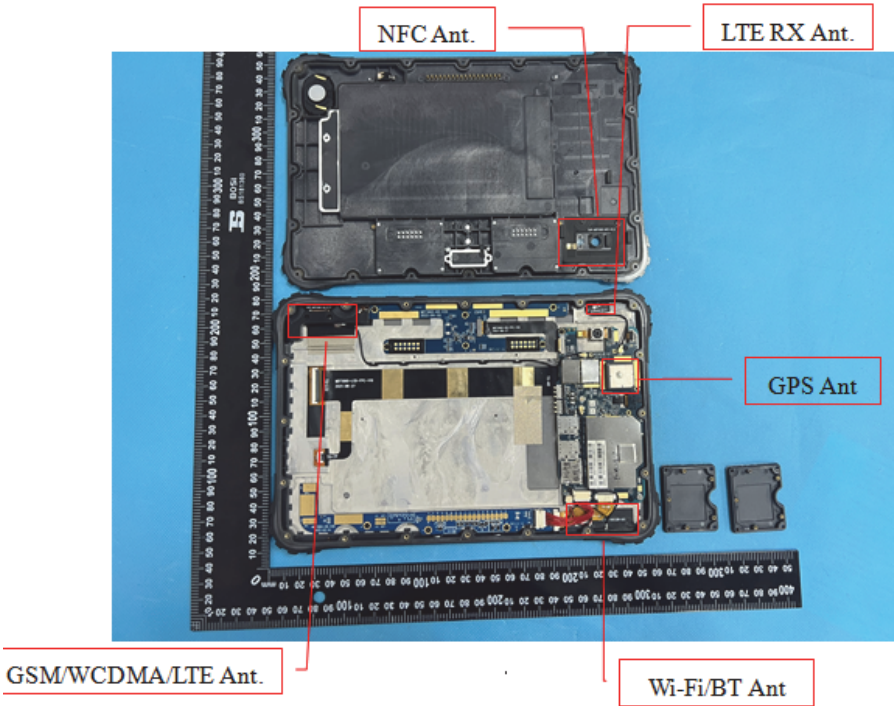
Solder Board-Component View 1





<p>Solder Board-Component View 4</p>	 <p>A photograph of a blue solder board component with gold-colored pads and components. The board is placed on a blue textured surface. A black ruler with white markings is visible on the left and bottom, showing measurements in millimeters. The board has a central rectangular area with a small square cutout. Text on the board reads "M011060-K8-V20" and "2022-04-02".</p>
<p>Solder Board-Component View 5</p>	 <p>A photograph of a more complex solder board component, likely a mobile phone motherboard, with various components and connectors. The board is placed on a blue textured surface. A black ruler with white markings is visible on the left and bottom, showing measurements in millimeters. The board has a large central square area with a smaller square cutout.</p>

<p>Solder Board-Component View 6</p>	 A photograph of a soldered board component, likely a mobile phone motherboard, showing a large silver solder mask covering most of the board. A small yellow component is visible on the left side. The board is placed on a blue textured surface with a black ruler for scale. The ruler shows markings in millimeters, with the component's length being approximately 100 mm.
<p>Solder Board-Component View 7</p>	 A photograph of the same soldered board component from a different perspective, showing the underside of the board. Various electronic components, including a large central chip and several smaller components, are visible. The board is placed on a blue textured surface with a black ruler for scale. The ruler shows markings in millimeters, with the component's length being approximately 100 mm.

<p>Solder Board-Component View 8</p>	 <p>A photograph showing the solder board-component view of a mobile phone chassis. The board is populated with various electronic components, including a large square component, several integrated circuits, and connectors. A black ruler with white markings is placed vertically on the left side of the board, showing measurements in millimeters from 0 to 100. The background is a blue textured surface.</p>
<p>Antenna View</p>	 <p>A photograph showing the antenna view of the mobile phone chassis. The chassis is shown from the back, with the battery cover removed, revealing the internal components. A black ruler with white markings is placed vertically on the left side of the chassis, showing measurements in millimeters from 0 to 100. The background is a blue textured surface. Red boxes and lines point to specific antenna locations, labeled as follows:</p> <ul style="list-style-type: none">NFC Ant.LTE RX Ant.GPS Ant.GSM/WCDMA/LTE Ant.Wi-Fi/BT Ant.