

MEASUREMENT 7

Type: Validation measurement (Fast, 75.00 %)

Date of measurement: 2022-11-01

Measurement duration: 12 minutes 21 seconds

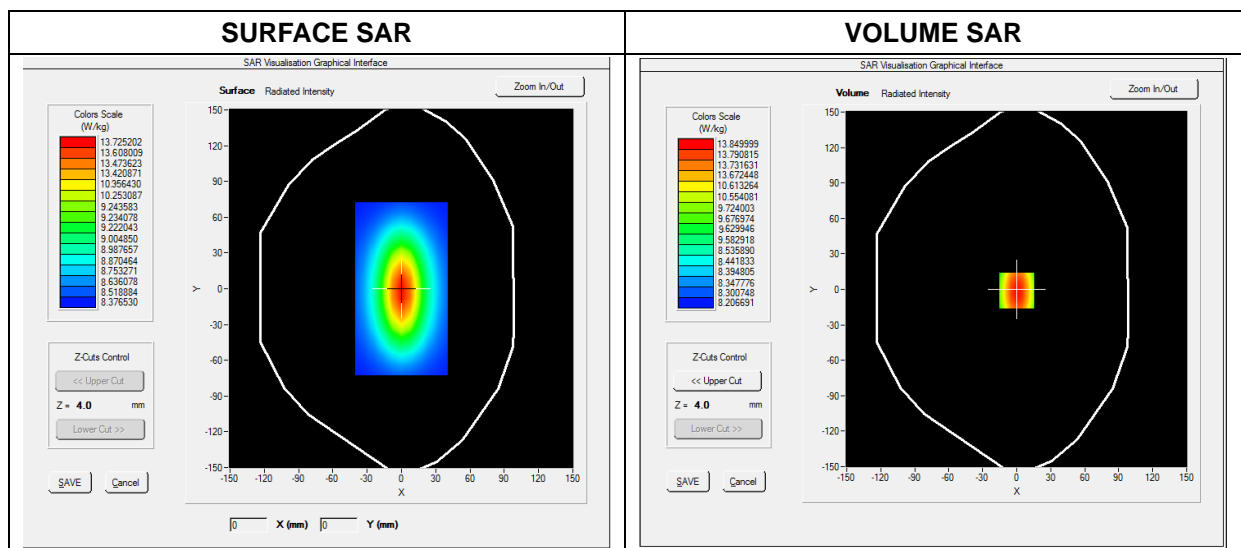
E-field Probe: SSE2 - SN 18/21 EPGO356; ConvF: 2.41; Calibrated: 2022-07-08

A. Experimental conditions

Area Scan	dx=8mm dy=8mm
Zoom Scan	dx=5mm dy=5mm dz=4mm
Phantom	Validation plane
Device Position	Dipole
Band	CW2600
Signal	Duty Cycle 1:1

B. SAR Measurement Results

Frequency (MHz)	2600.000000
Relative Permittivity (real part)	52.244921
Conductivity (S/m)	2.143182
Power Variation (%)	0.886021
Ambient Temperature	22.5
Liquid Temperature	22.5

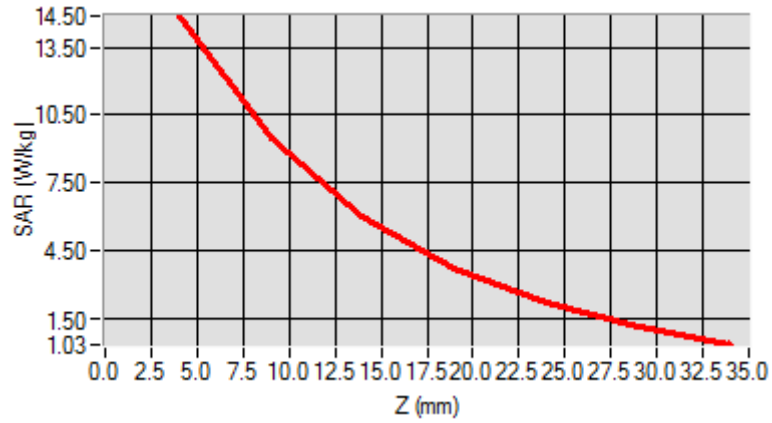


Maximum location: X=0.00, Y=0.00

SAR 10g (W/Kg)	8.230801
SAR 1g (W/Kg)	13.539282

Z Axis Scan

Z (mm)	0.00	4.00	9.00	14.00	19.00	24.00	29.00
SAR (W/Kg)	0.0000	14.0426	12.1354	10.2965	7.4854	5.9354	4.5186



3D screen shot	Hot spot position

Annex B. Plots of SAR Measurement

MEASUREMENT 1

Type: Phone measurement (Complete)
 Date of measurement: 2022-10-27
 Measurement duration: 11 minutes 48 seconds

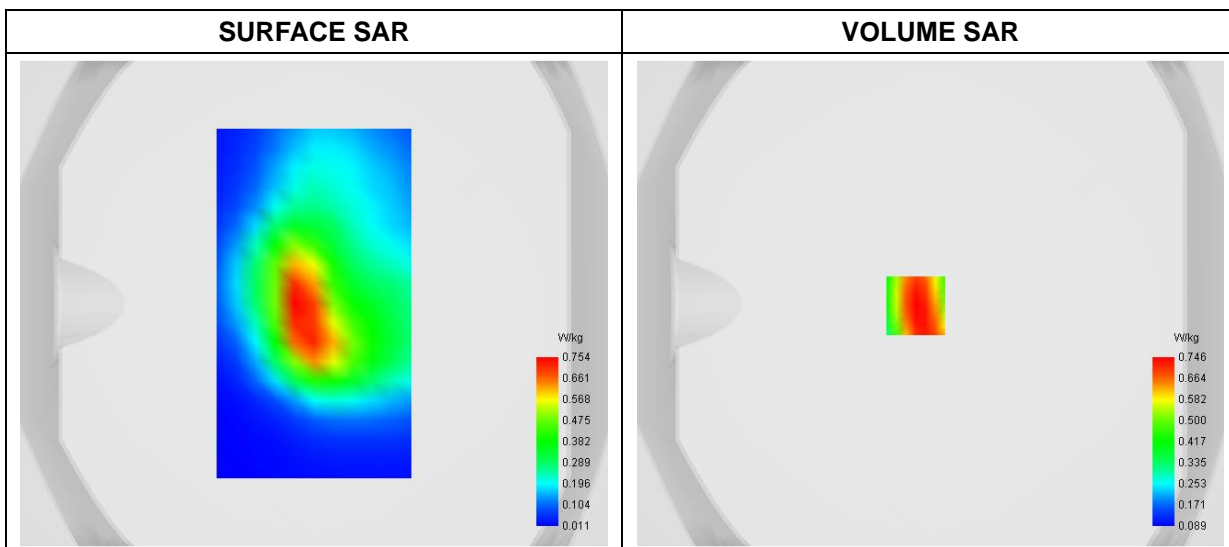
A. Experimental conditions

Area Scan	dx=8mm dy=8mm
Zoom Scan	dx=4mm dy=4mm dz=2mm
Phantom	Flat Plane
Device Position	Back
Band	GPRS900_4TX
Channels	Low
Signal	Duty Cycle: 1:2

B. SAR Measurement Results

Frequency (MHz)	824.200000
Relative Permittivity (real part)	54.824517
Conductivity (S/m)	0.951275
Power Variation (%)	1.746100
Ambient Temperature	22.8
Liquid Temperature	22.8

C. SAR Surface and Volume



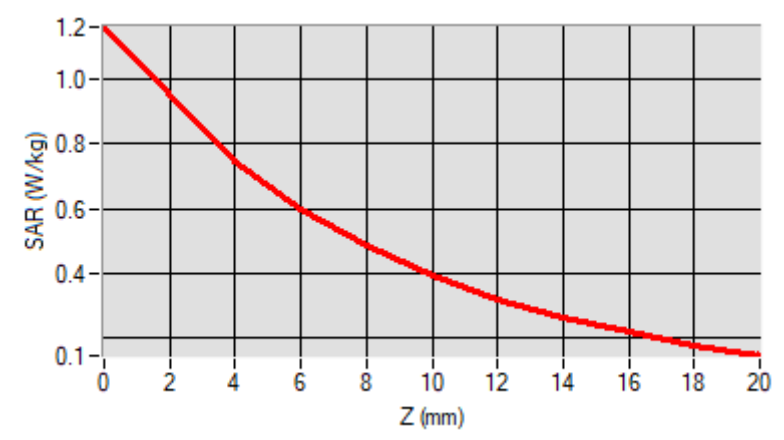
Maximum location: X=-6.00, Y=-1.00

D. SAR 1g & 10g

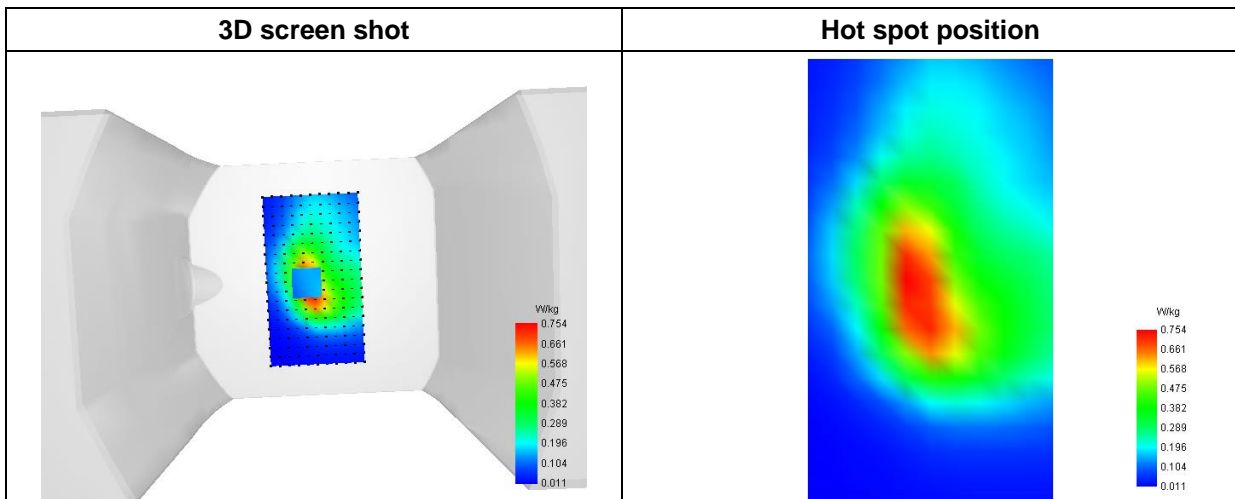
SAR 10g (W/Kg)	0.409668
SAR 1g (W/Kg)	0.704044

E. Z Axis Scan

Z (mm)	0.00	4.00	6.00	8.00	10.00	12.00	14.00	16.00	18.00
SAR (W/Kg)	1.1623	0.7463	0.5998	0.4831	0.3922	0.3207	0.2636	0.2171	0.1780



F. 3D Image



MEASUREMENT 2

Type: Phone measurement (Complete)
 Date of measurement: 2022-10-28
 Measurement duration: 11 minutes 48 seconds

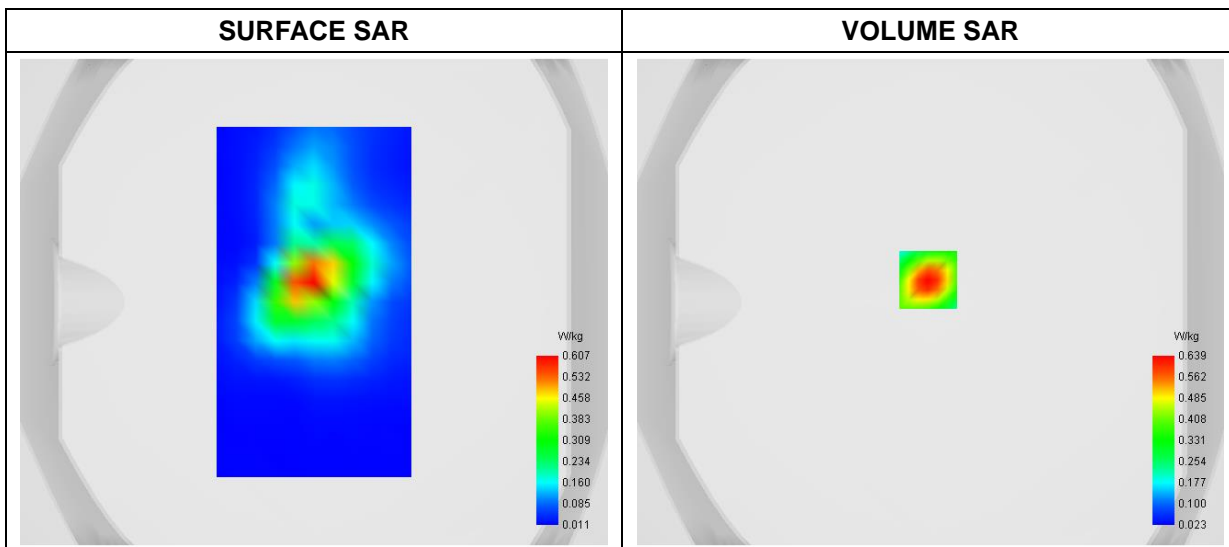
A. Experimental conditions

Area Scan	dx=8mm dy=8mm
Zoom Scan	dx=4mm dy=4mm dz=2mm
Phantom	Flat Plane
Device Position	Back
Band	GPRS1800_4TX
Channels	Middle
Signal	Duty Cycle: 1:2

B. SAR Measurement Results

Frequency (MHz)	1880.000000
Relative Permittivity (real part)	54.481244
Conductivity (S/m)	1.532369
Power Variation (%)	-1.550000
Ambient Temperature	22.8
Liquid Temperature	22.8

C. SAR Surface and Volume



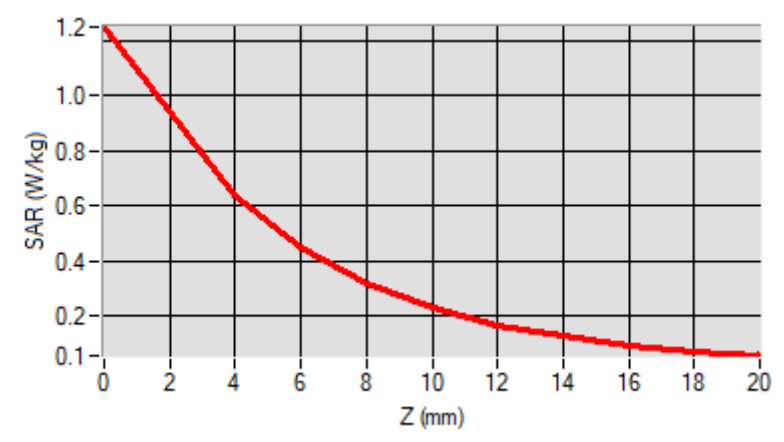
Maximum location: X=-1.00, Y=9.00

D. SAR 1g & 10g

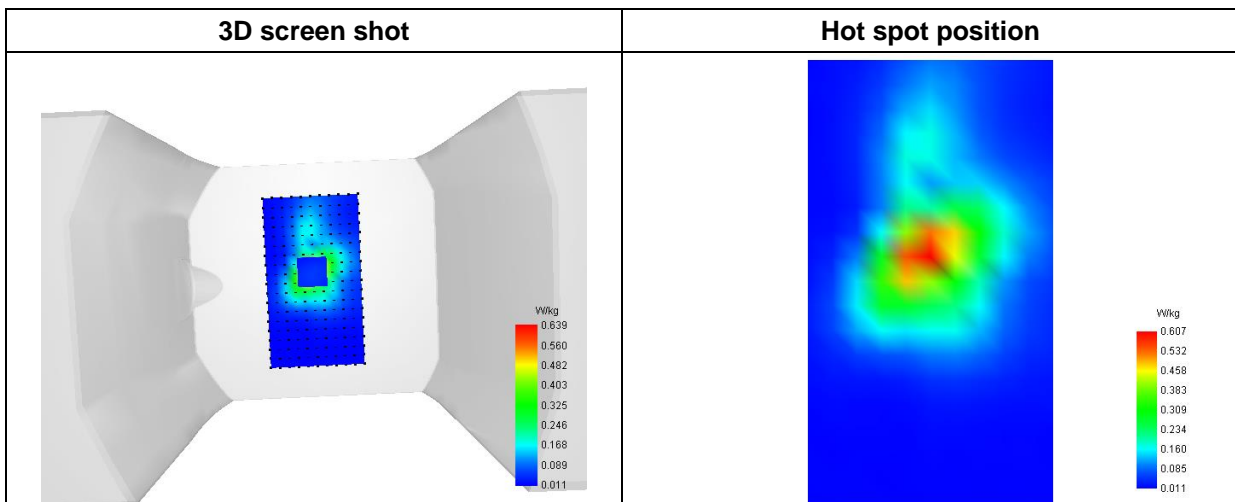
SAR 10g (W/Kg)	0.264940
SAR 1g (W/Kg)	0.586546

E. Z Axis Scan

Z (mm)	0.00	4.00	6.00	8.00	10.00	12.00	14.00	16.00	18.00
SAR (W/Kg)	1.2485	0.6391	0.4524	0.3198	0.2297	0.1685	0.1264	0.0968	0.0748



F. 3D Image



MEASUREMENT 3

Type: Phone measurement (Complete)
 Date of measurement: 2022-10-28
 Measurement duration: 12 minutes 3 seconds

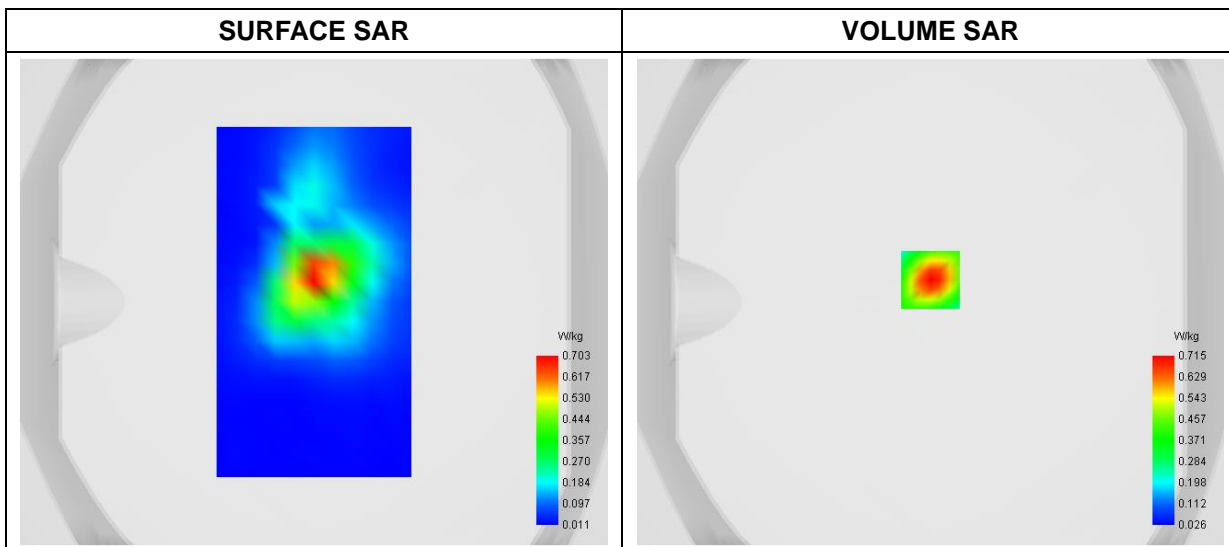
A. Experimental conditions

Area Scan	dx=8mm dy=8mm
Zoom Scan	dx=4mm dy=4mm dz=2mm
Phantom	Flat Plane
Device Position	Back
Band	WCDMA1900_RMC
Channels	Low
Signal	Duty Cycle 1:1

B. SAR Measurement Results

Frequency (MHz)	1852.400000
Relative Permittivity (real part)	54.561247
Conductivity (S/m)	1.512360
Power Variation (%)	0.880000
Ambient Temperature	22.8
Liquid Temperature	22.8

C. SAR Surface and Volume



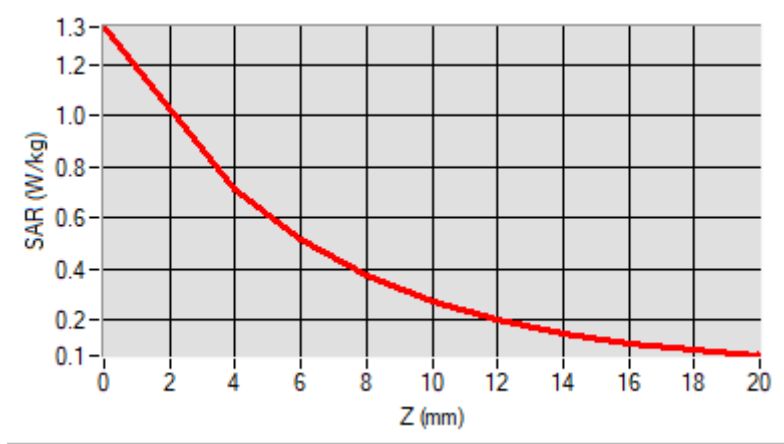
Maximum location: X=0.00, Y=9.00

D. SAR 1g & 10g

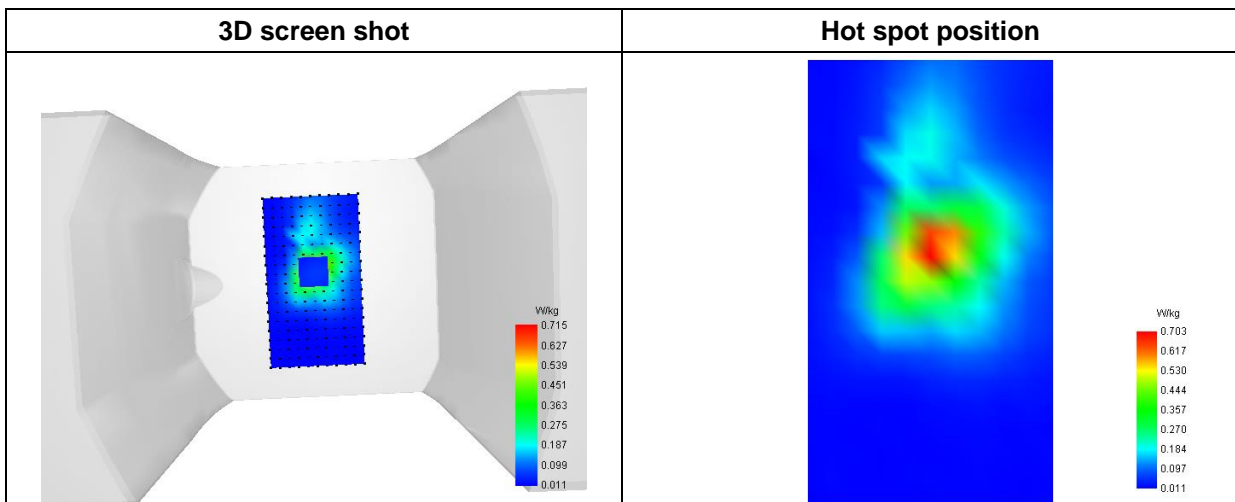
SAR 10g (W/Kg)	0.298785
SAR 1g (W/Kg)	0.653688

E. Z Axis Scan

Z (mm)	0.00	4.00	6.00	8.00	10.00	12.00	14.00	16.00	18.00
SAR (W/Kg)	1.3465	0.7152	0.5166	0.3721	0.2710	0.2001	0.1497	0.1130	0.0852



F. 3D Image



MEASUREMENT 4

Type: Phone measurement (Complete)
 Date of measurement: 2022-10-28
 Measurement duration: 12 minutes 3 seconds

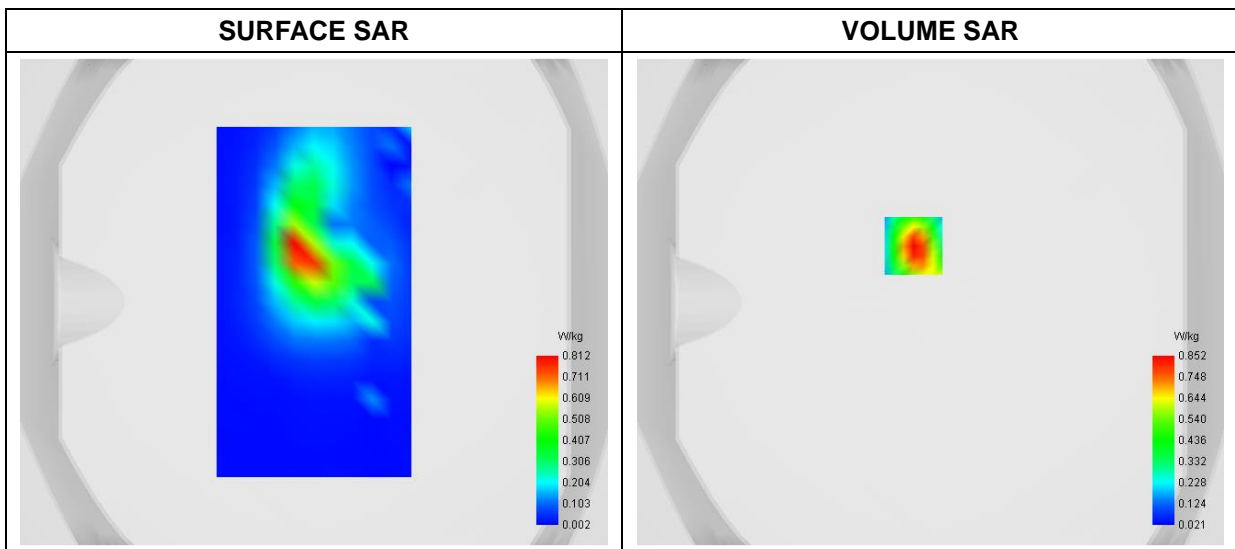
A. Experimental conditions

Area Scan	dx=8mm dy=8mm
Zoom Scan	dx=4mm dy=4mm dz=2mm
Phantom	Flat Plane
Device Position	Back
Band	WCDMA1700_RMC
Channels	Low
Signal	Duty Cycle 1:1

B. SAR Measurement Results

Frequency (MHz)	1712.400000
Relative Permittivity (real part)	1.513514
Conductivity (S/m)	1.513477
Power Variation (%)	0.150000
Ambient Temperature	22.8
Liquid Temperature	22.8

C. SAR Surface and Volume



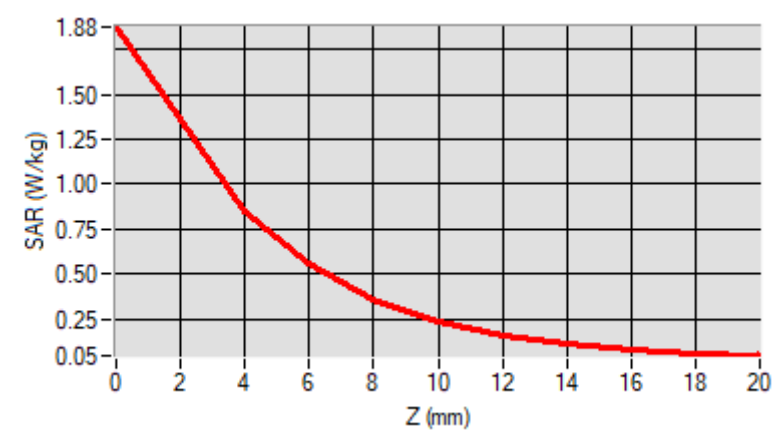
Maximum location: X=-7.00, Y=23.00

D. SAR 1g & 10g

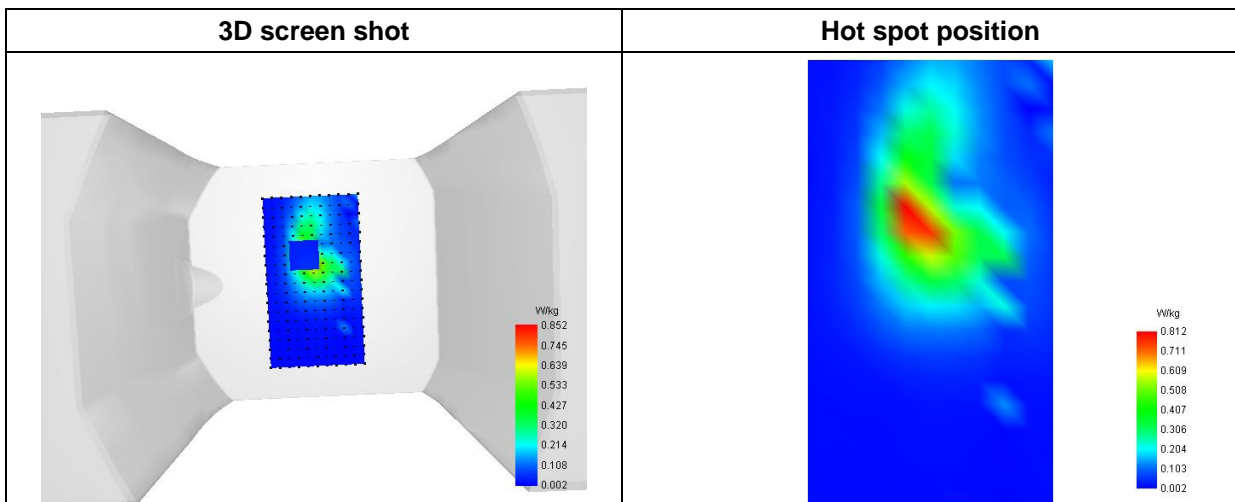
SAR 10g (W/Kg)	0.321372
SAR 1g (W/Kg)	0.782563

E. Z Axis Scan

Z (mm)	0.00	4.00	6.00	8.00	10.00	12.00	14.00	16.00	18.00
SAR (W/Kg)	1.8763	0.8515	0.5574	0.3609	0.2372	0.1600	0.1119	0.0812	0.0606



F. 3D Image



MEASUREMENT 5

Type: Phone measurement (Complete)
 Date of measurement: 2022-10-27
 Measurement duration: 12 minutes 3 seconds

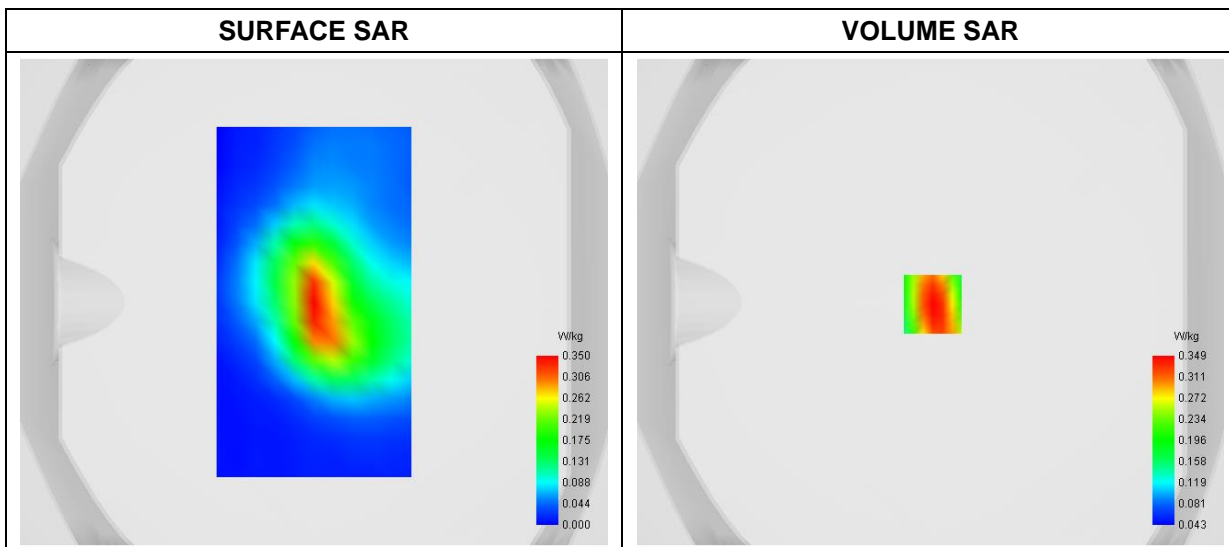
A. Experimental conditions

Area Scan	dx=8mm dy=8mm
Zoom Scan	dx=4mm dy=4mm dz=2mm
Phantom	Flat Plane
Device Position	Back
Band	WCDMA850_RMC
Channels	High
Signal	Duty Cycle 1:1

B. SAR Measurement Results

Frequency (MHz)	846.600000
Relative Permittivity (real part)	54.872275
Conductivity (S/m)	0.954087
Power Variation (%)	-1.020000
Ambient Temperature	22.8
Liquid Temperature	22.8

C. SAR Surface and Volume



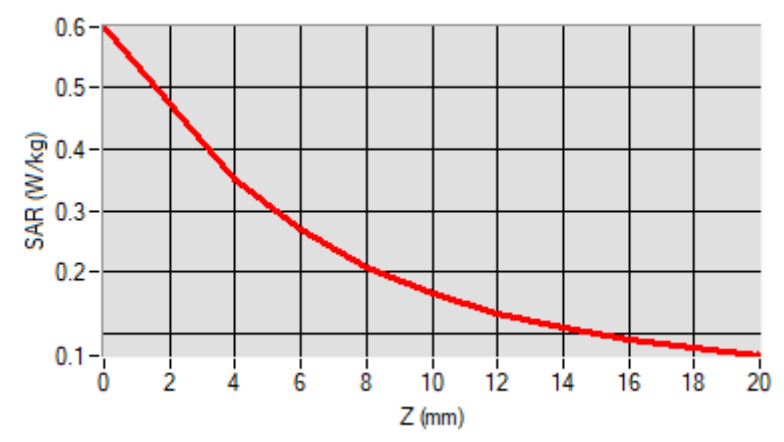
Maximum location: X=1.00, Y=-1.00

D. SAR 1g & 10g

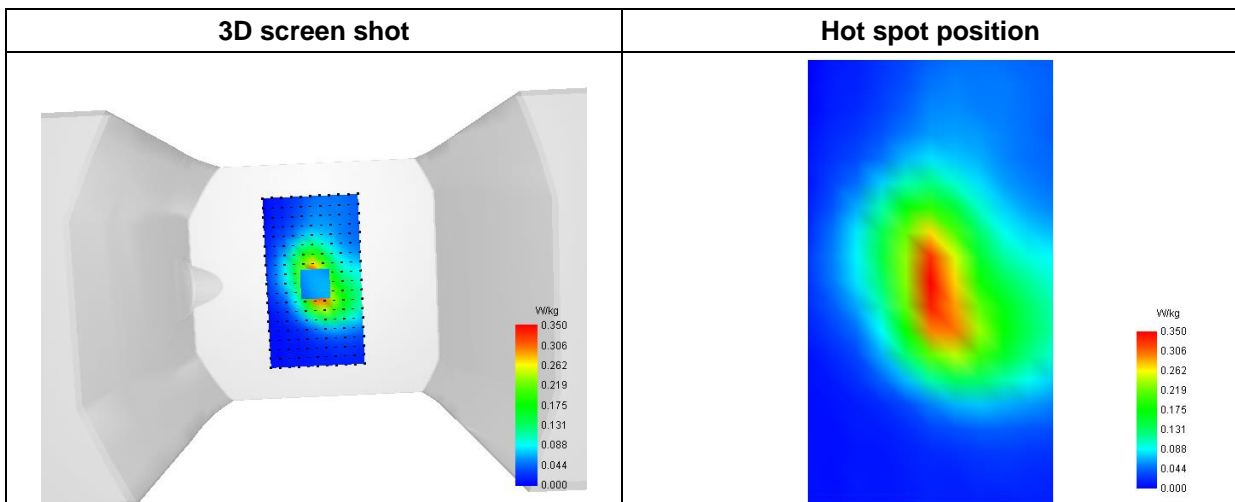
SAR 10g (W/Kg)	0.181331
SAR 1g (W/Kg)	0.326610

E. Z Axis Scan

Z (mm)	0.00	4.00	6.00	8.00	10.00	12.00	14.00	16.00	18.00
SAR (W/Kg)	0.5956	0.3489	0.2684	0.2081	0.1645	0.1328	0.1095	0.0918	0.0777



F. 3D Image



MEASUREMENT 6

Type: Phone measurement (Complete)
 Date of measurement: 2022-10-28
 Measurement duration: 12 minutes 3 seconds

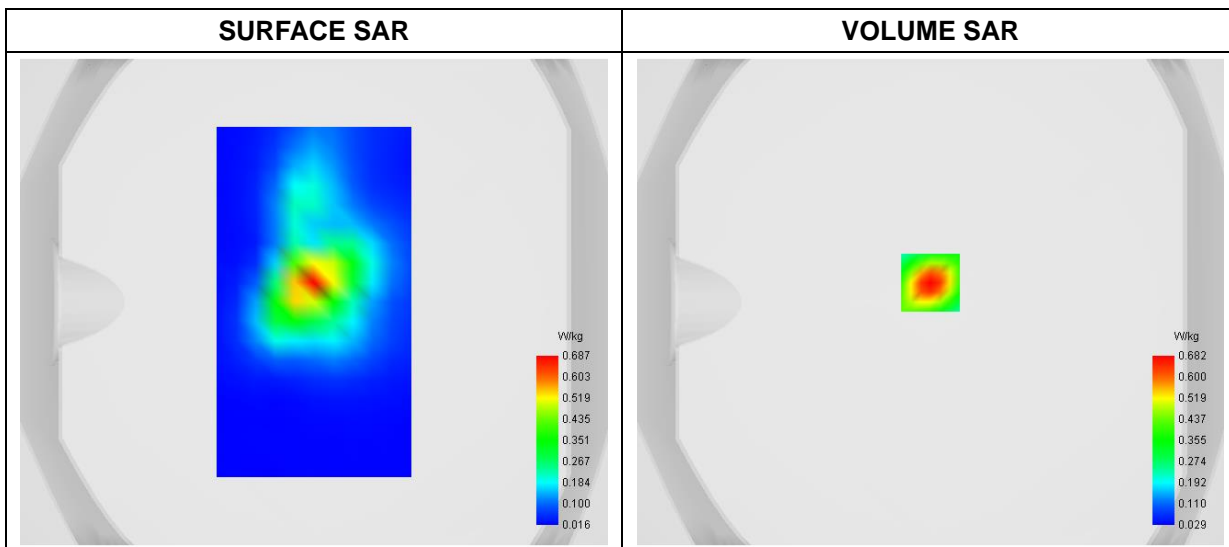
A. Experimental conditions

Area Scan	dx=8mm dy=8mm
Zoom Scan	dx=4mm dy=4mm dz=2mm
Phantom	Flat Plane
Device Position	Back
Band	LTE Band 2
Channels	QPSK, 20MHz, 1RB, Low
Signal	Duty Cycle 1:1

B. SAR Measurement Results

Frequency (MHz)	1860.000000
Relative Permittivity (real part)	54.491724
Conductivity (S/m)	1.533097
Power Variation (%)	-1.140000
Ambient Temperature	22.8
Liquid Temperature	22.8

C. SAR Surface and Volume



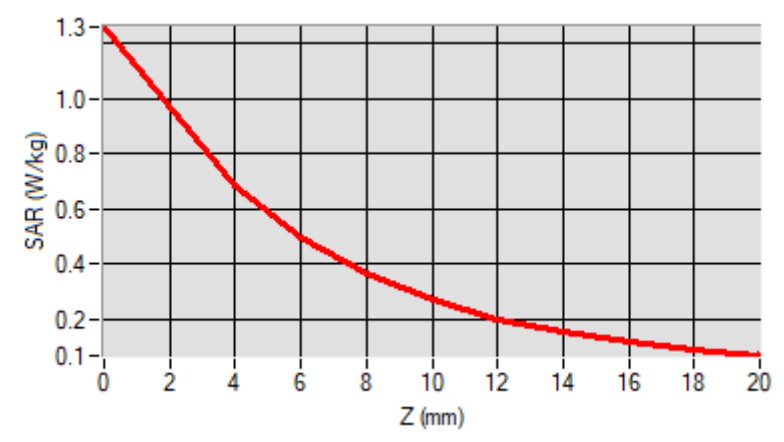
Maximum location: X=0.00, Y=8.00

D. SAR 1g & 10g

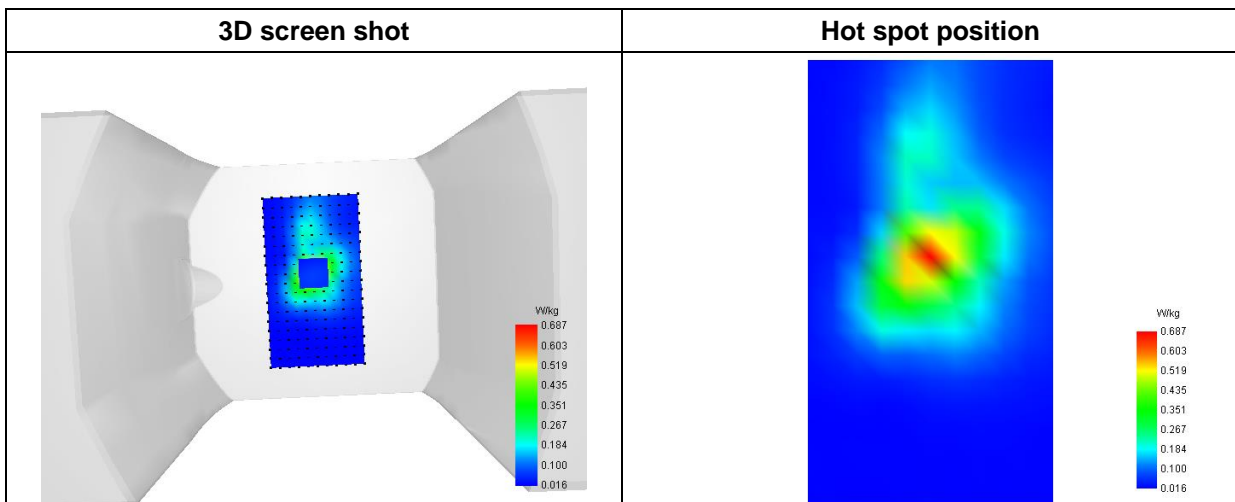
SAR 10g (W/Kg)	0.288509
SAR 1g (W/Kg)	0.620101

E. Z Axis Scan

Z (mm)	0.00	4.00	6.00	8.00	10.00	12.00	14.00	16.00	18.00
SAR (W/Kg)	1.2583	0.6819	0.4988	0.3645	0.2696	0.2023	0.1539	0.1182	0.0908



F. 3D Image



MEASUREMENT 7

Type: Phone measurement (Complete)
 Date of measurement: 2022-10-28
 Measurement duration: 12 minutes 3 seconds

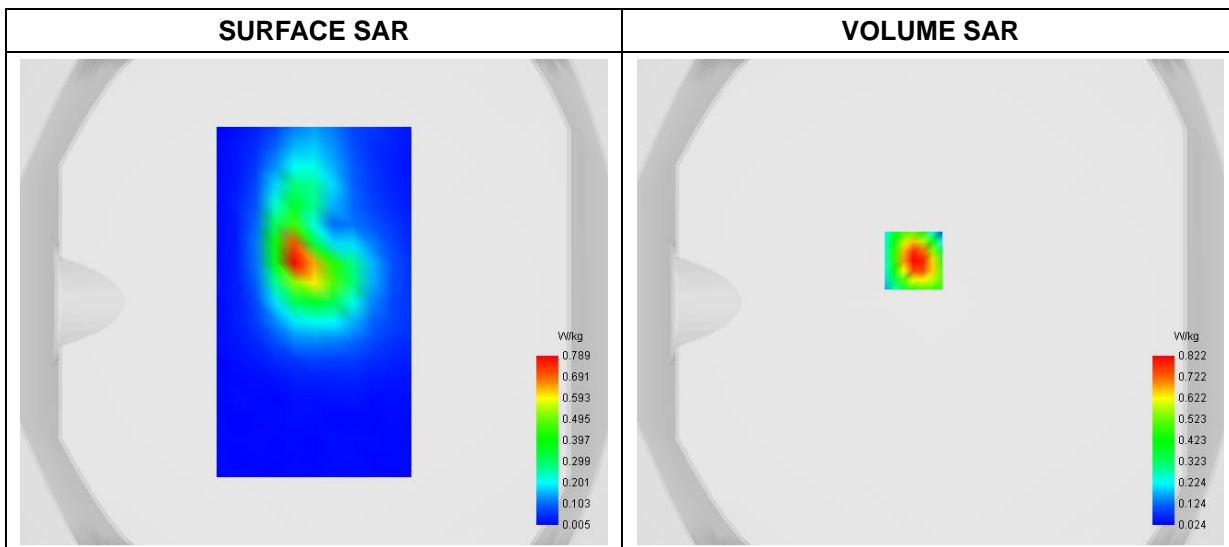
A. Experimental conditions

Area Scan	dx=8mm dy=8mm
Zoom Scan	dx=4mm dy=4mm dz=2mm
Phantom	Flat Plane
Device Position	Back
Band	LTE Band 4
Channels	QPSK 20MHz 1RB, Low
Signal	Duty Cycle 1:1

B. SAR Measurement Results

Frequency (MHz)	1720.000000
Relative Permittivity (real part)	54.482575
Conductivity (S/m)	1.511879
Power Variation (%)	2.180000
Ambient Temperature	22.8
Liquid Temperature	22.8

C. SAR Surface and Volume



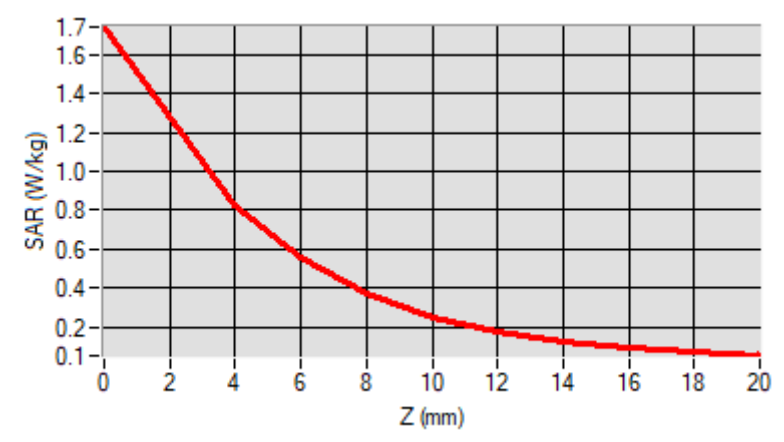
Maximum location: X=-7.00, Y=17.00

D. SAR 1g & 10g

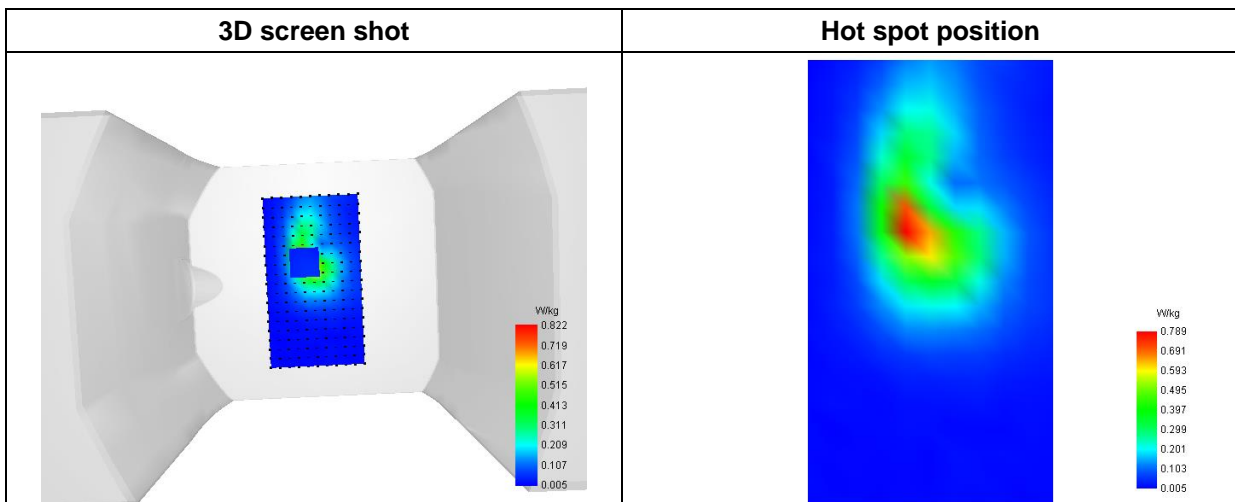
SAR 10g (W/Kg)	0.317529
SAR 1g (W/Kg)	0.758601

E. Z Axis Scan

Z (mm)	0.00	4.00	6.00	8.00	10.00	12.00	14.00	16.00	18.00
SAR (W/Kg)	1.7410	0.8215	0.5520	0.3681	0.2493	0.1730	0.1237	0.0912	0.0685



F. 3D Image



MEASUREMENT 8

Type: Phone measurement (Complete)
 Date of measurement: 2022-10-27
 Measurement duration: 12 minutes 3 seconds

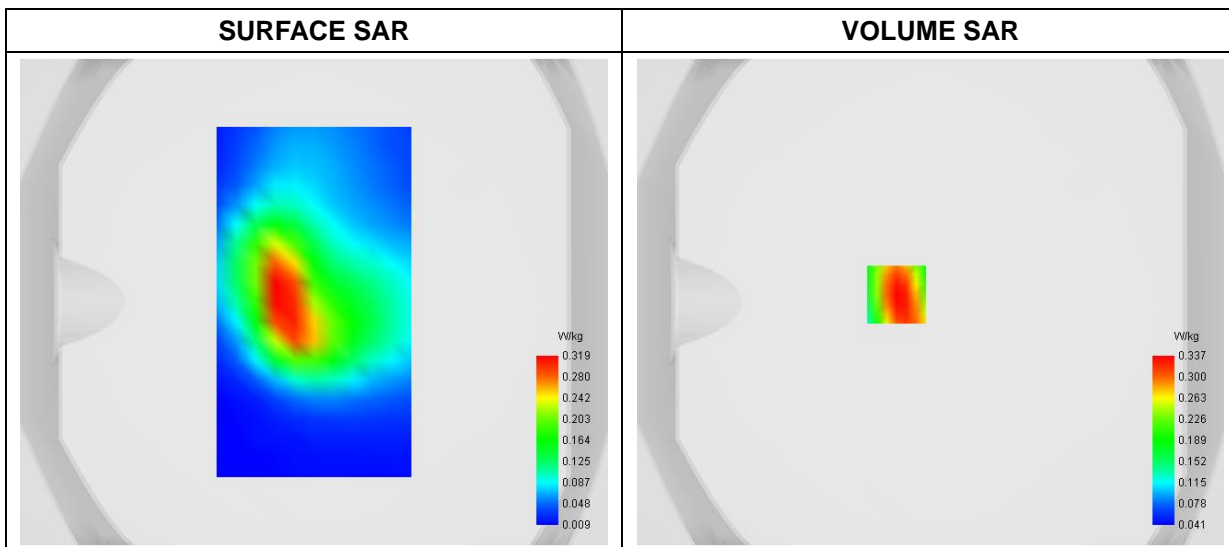
A. Experimental conditions

Area Scan	dx=8mm dy=8mm
Zoom Scan	dx=4mm dy=4mm dz=2mm
Phantom	Flat Plane
Device Position	Back
Band	LTE Band 5
Channels	QPSK, 10MHz, 1RB, High
Signal	Duty Cycle 1:1

B. SAR Measurement Results

Frequency (MHz)	844.000000
Relative Permittivity (real part)	54.854745
Conductivity (S/m)	0.951045
Power Variation (%)	-0.870000
Ambient Temperature	22.8
Liquid Temperature	22.8

C. SAR Surface and Volume



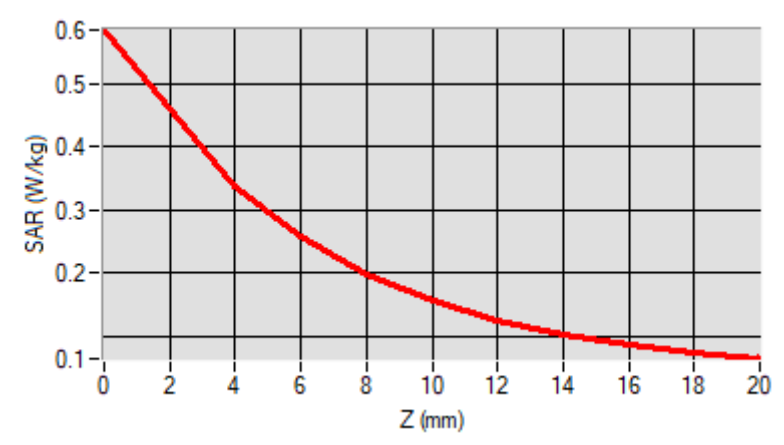
Maximum location: X=-14.00, Y=3.00

D. SAR 1g & 10g

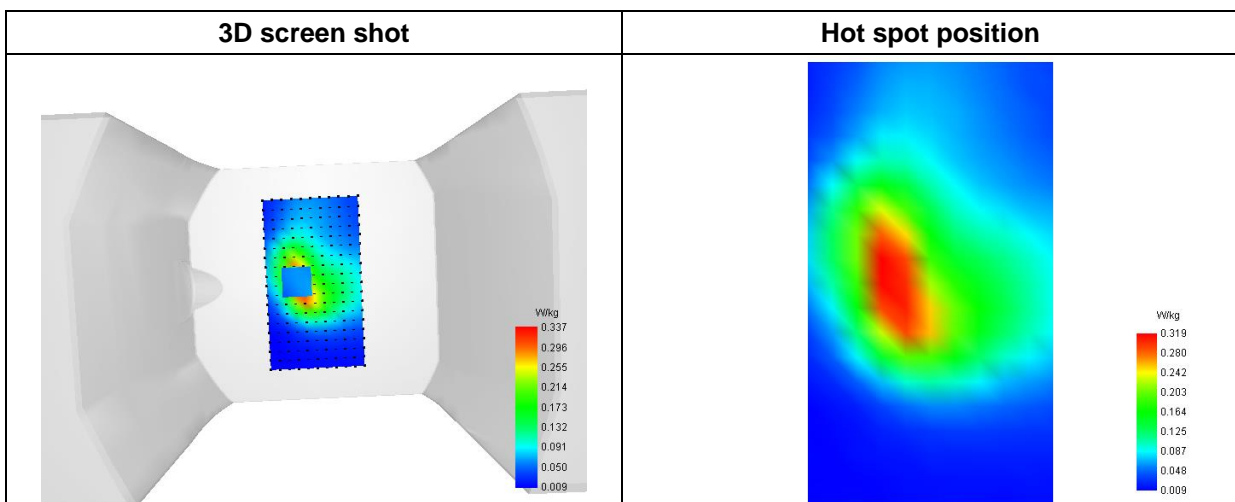
SAR 10g (W/Kg)	0.176878
SAR 1g (W/Kg)	0.317605

E. Z Axis Scan

Z (mm)	0.00	4.00	6.00	8.00	10.00	12.00	14.00	16.00	18.00
SAR (W/Kg)	0.5850	0.3366	0.2567	0.1976	0.1555	0.1255	0.1037	0.0875	0.0749



F. 3D Image



MEASUREMENT 9

Type: Phone measurement (Complete)
 Date of measurement: 2022-11-01
 Measurement duration: 12 minutes 3 seconds

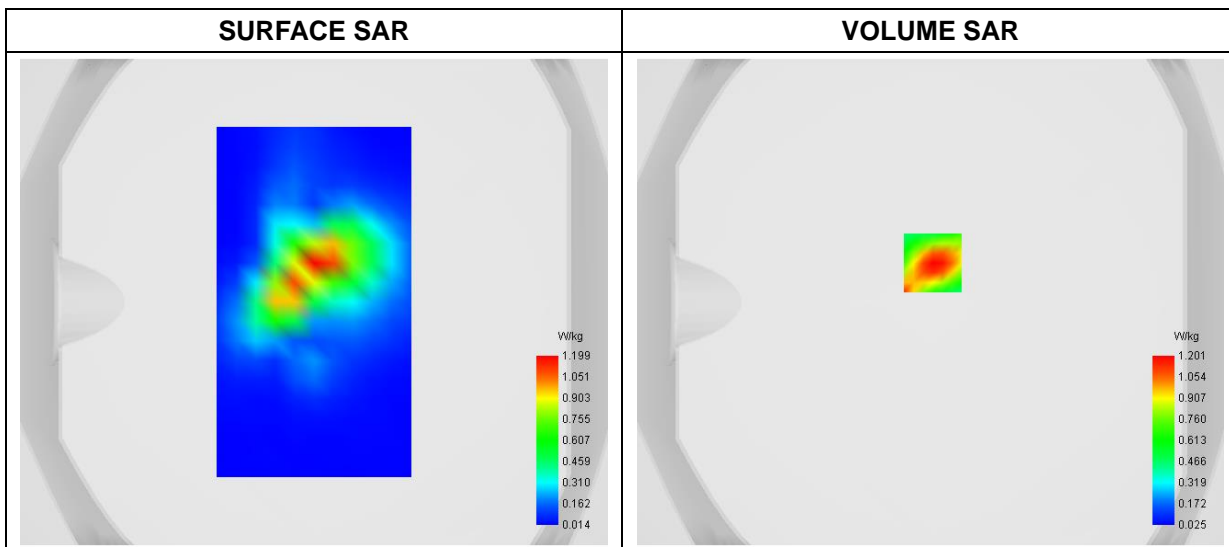
A. Experimental conditions

Area Scan	dx=8mm dy=8mm
Zoom Scan	dx=4mm dy=4mm dz=2mm
Phantom	Flat Plane
Device Position	Back
Band	LTE Band 7
Channels	QPSK, 20MHz, 1RB, Middle
Signal	Duty Cycle 1:1

B. SAR Measurement Results

Frequency (MHz)	2535.000000
Relative Permittivity (real part)	52.223766
Conductivity (S/m)	2.142182
Power Variation (%)	1.710000
Ambient Temperature	22.5
Liquid Temperature	22.5

C. SAR Surface and Volume



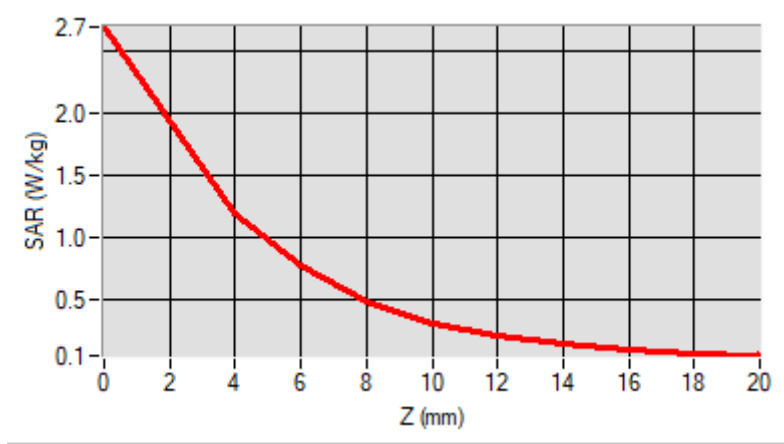
Maximum location: X=1.00, Y=16.00

D. SAR 1g & 10g

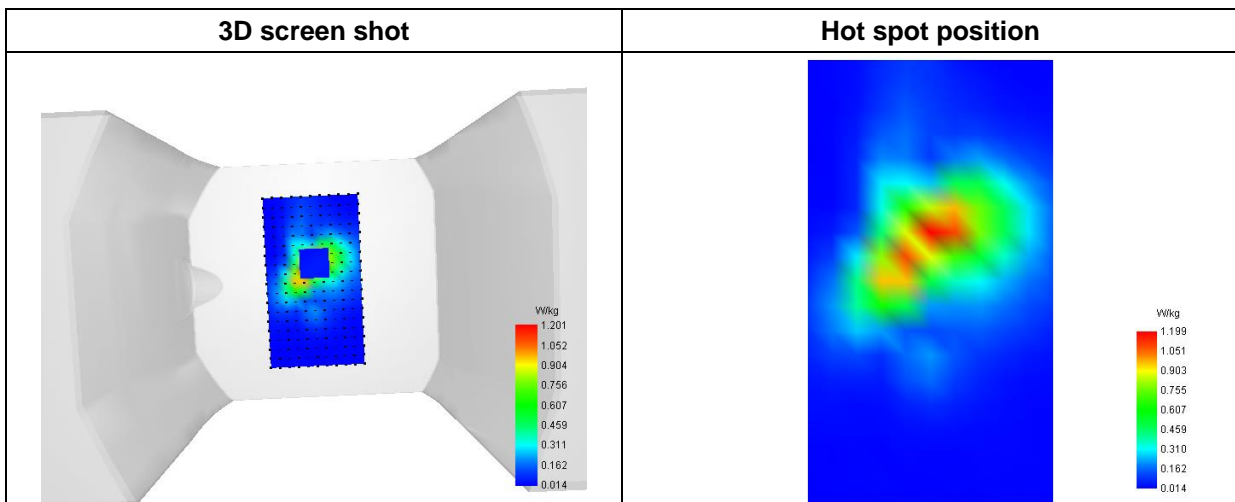
SAR 10g (W/Kg)	0.481919
SAR 1g (W/Kg)	1.117461

E. Z Axis Scan

Z (mm)	0.00	4.00	6.00	8.00	10.00	12.00	14.00	16.00	18.00
SAR (W/Kg)	2.6911	1.2006	0.7761	0.4946	0.3191	0.2109	0.1442	0.1023	0.0745



F. 3D Image



MEASUREMENT 10

Type: Phone measurement (Complete)
 Date of measurement: 2022-10-27
 Measurement duration: 12 minutes 3 seconds

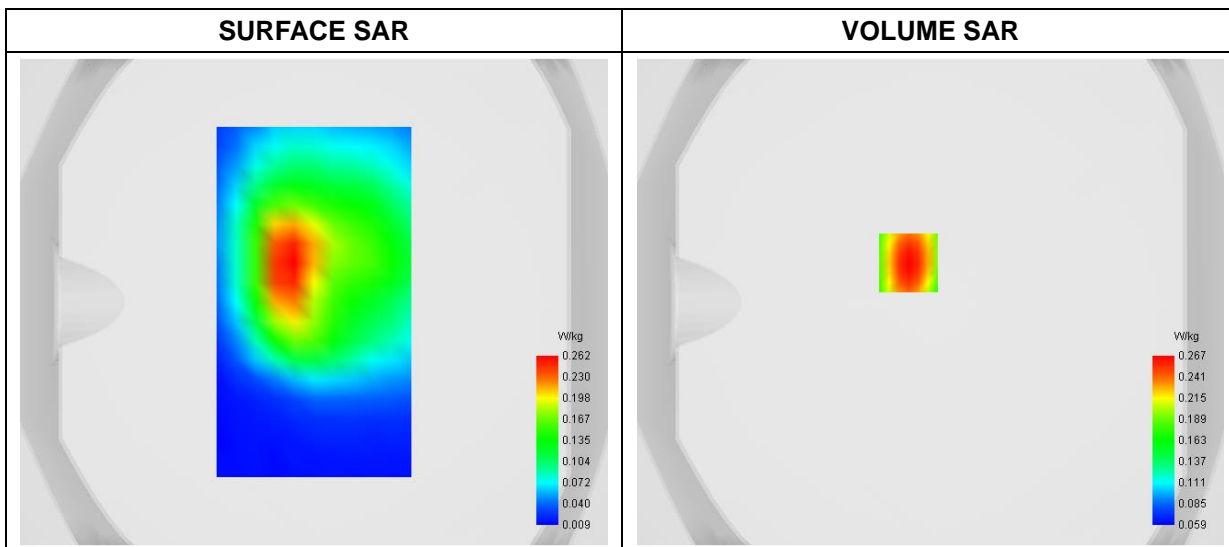
A. Experimental conditions

Area Scan	dx=8mm dy=8mm
Zoom Scan	dx=4mm dy=4mm dz=2mm
Phantom	Flat Plane
Device Position	Back
Band	LTE Band 12
Channels	QPSK, 10MHz, 1RB, Middle
Signal	Duty Cycle 1:1

B. SAR Measurement Results

Frequency (MHz)	707.500000
Relative Permittivity (real part)	54.894068
Conductivity (S/m)	0.933496
Power Variation (%)	3.750000
Ambient Temperature	22.8
Liquid Temperature	22.8

C. SAR Surface and Volume



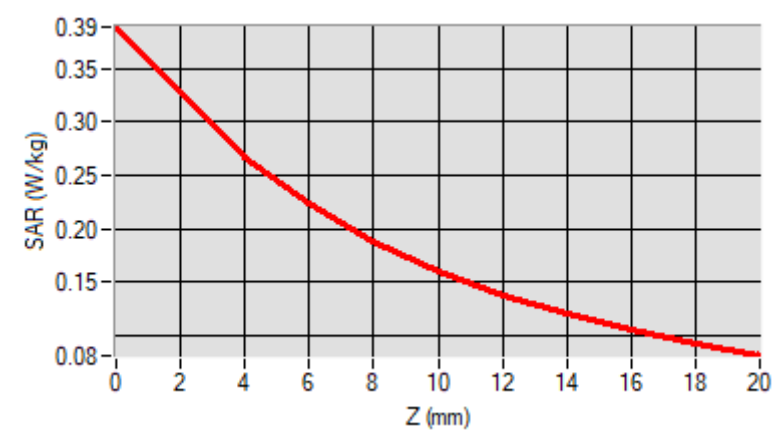
Maximum location: X=-9.00, Y=16.00

D. SAR 1g & 10g

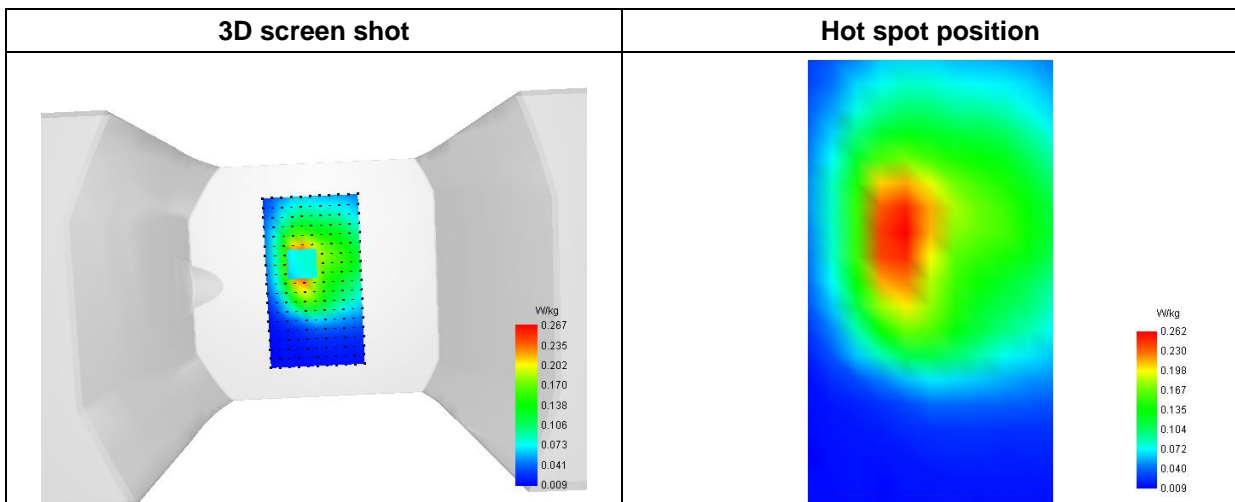
SAR 10g (W/Kg)	0.165036
SAR 1g (W/Kg)	0.257207

E. Z Axis Scan

Z (mm)	0.00	4.00	6.00	8.00	10.00	12.00	14.00	16.00	18.00
SAR (W/Kg)	0.3890	0.2668	0.2230	0.1876	0.1598	0.1377	0.1197	0.1049	0.0921



F. 3D Image



MEASUREMENT 11

Type: Phone measurement (Complete)
 Date of measurement: 2022-10-27
 Measurement duration: 12 minutes 3 seconds

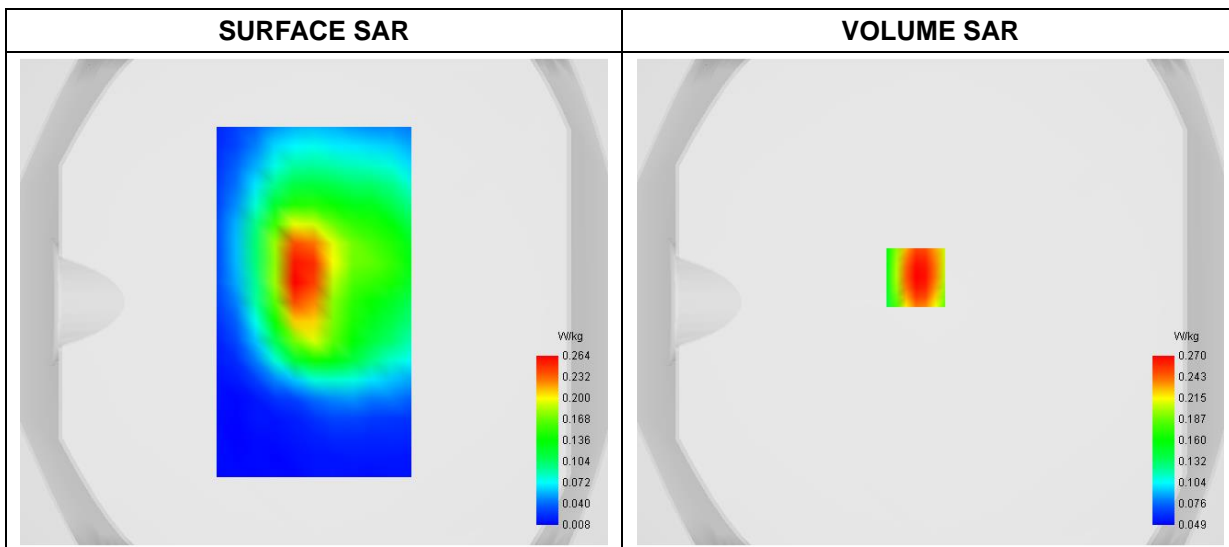
A. Experimental conditions

Area Scan	dx=8mm dy=8mm
Zoom Scan	dx=4mm dy=4mm dz=2mm
Phantom	Flat Plane
Device Position	Back
Band	LTE Band 17
Channels	QPSK, 10MHz, 1RB, Low
Signal	Duty Cycle 1:1

B. SAR Measurement Results

Frequency (MHz)	709.000000
Relative Permittivity (real part)	54.912068
Conductivity (S/m)	0.963196
Power Variation (%)	1.350000
Ambient Temperature	22.8
Liquid Temperature	22.8

C. SAR Surface and Volume



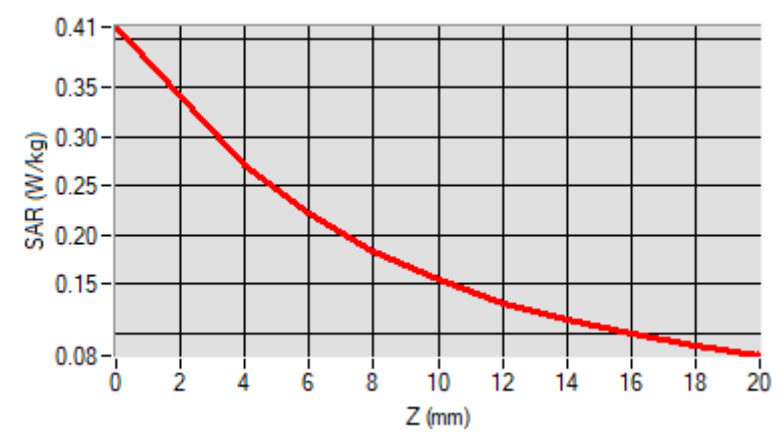
Maximum location: X=-6.00, Y=10.00

D. SAR 1g & 10g

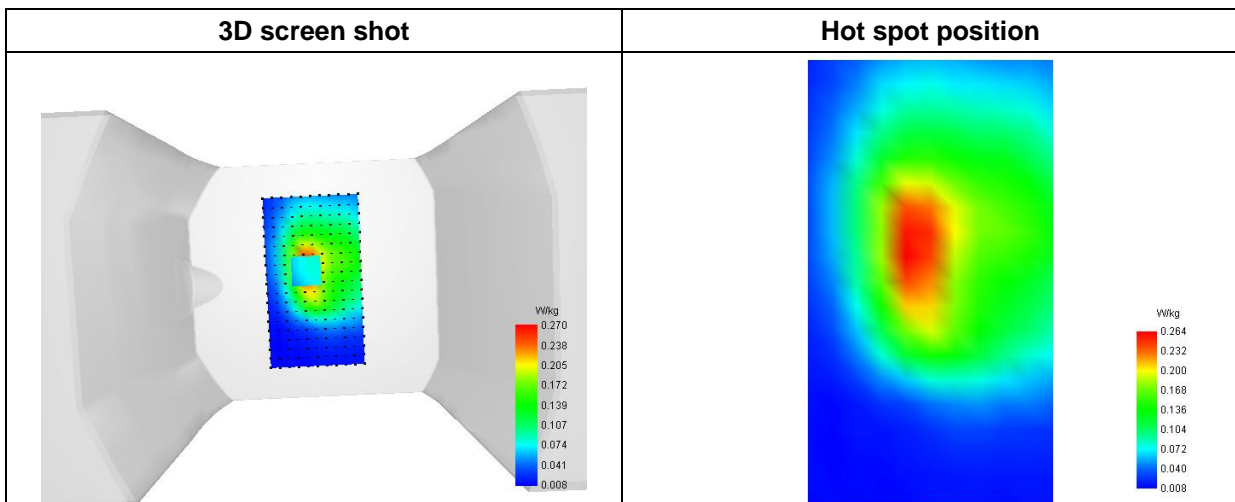
SAR 10g (W/Kg)	0.163826
SAR 1g (W/Kg)	0.263644

E. Z Axis Scan

Z (mm)	0.00	4.00	6.00	8.00	10.00	12.00	14.00	16.00	18.00
SAR (W/Kg)	0.4121	0.2704	0.2213	0.1828	0.1535	0.1309	0.1132	0.0991	0.0872



F. 3D Image



MEASUREMENT 12

Type: Phone measurement (Complete)
 Date of measurement: 2022-11-01
 Measurement duration: 12 minutes 3 seconds

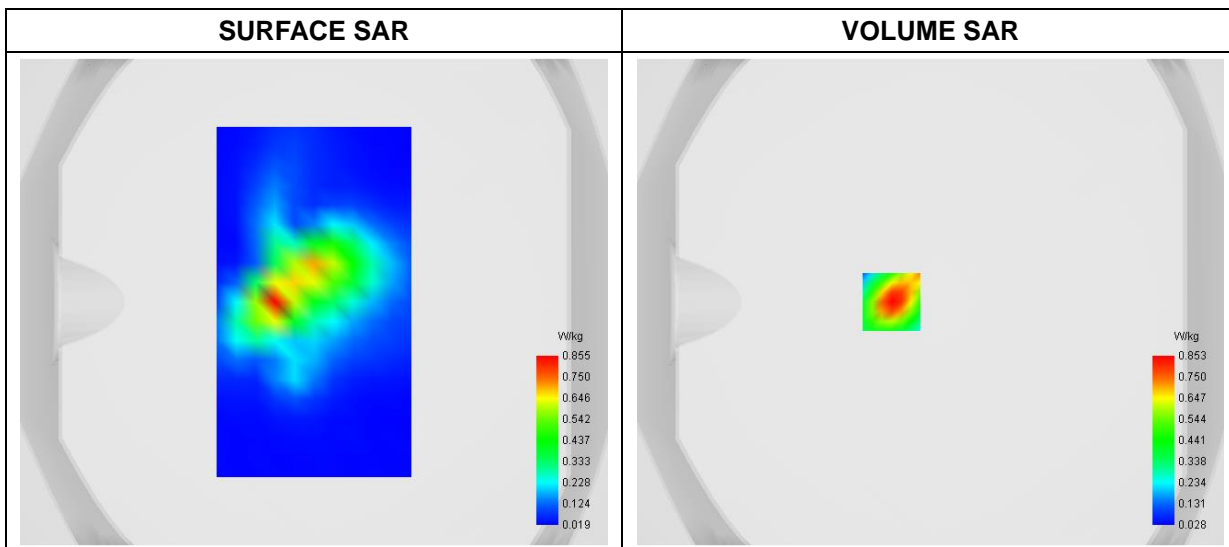
A. Experimental conditions

Area Scan	dx=8mm dy=8mm
Zoom Scan	dx=4mm dy=4mm dz=2mm
Phantom	Flat Plane
Device Position	Back
Band	LTE Band 38
Channels	QPSK, 20MHz, 1RB, High
Signal	Duty Cycle 1:1

B. SAR Measurement Results

Frequency (MHz)	2610.000000
Relative Permittivity (real part)	52.253168
Conductivity (S/m)	2.143796
Power Variation (%)	-1.650000
Ambient Temperature	22.5
Liquid Temperature	22.5

C. SAR Surface and Volume



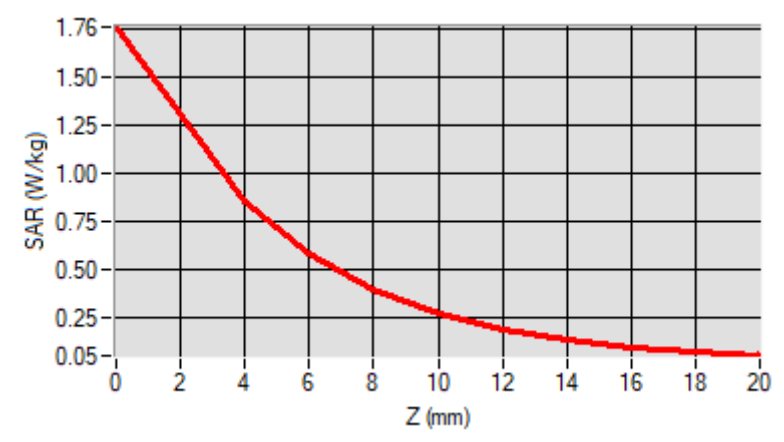
Maximum location: X=-16.00, Y=0.00

D. SAR 1g & 10g

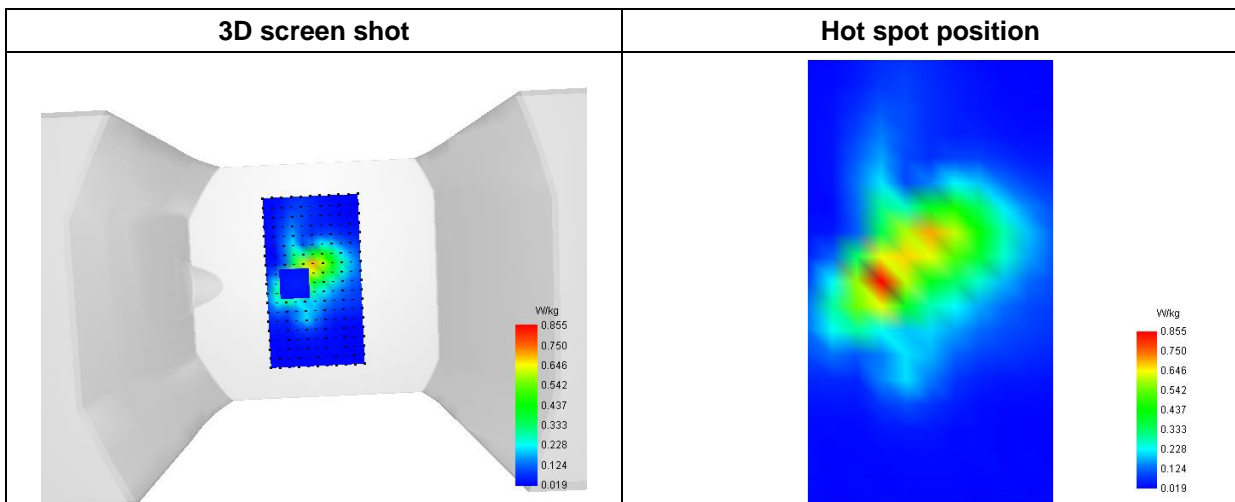
SAR 10g (W/Kg)	0.329893
SAR 1g (W/Kg)	0.782537

E. Z Axis Scan

Z (mm)	0.00	4.00	6.00	8.00	10.00	12.00	14.00	16.00	18.00
SAR (W/Kg)	1.7595	0.8528	0.5821	0.3944	0.2704	0.1888	0.1347	0.0979	0.0718



F. 3D Image



MEASUREMENT 13

Type: Phone measurement (Complete)
 Date of measurement: 2022-10-31
 Measurement duration: 12 minutes 3 seconds

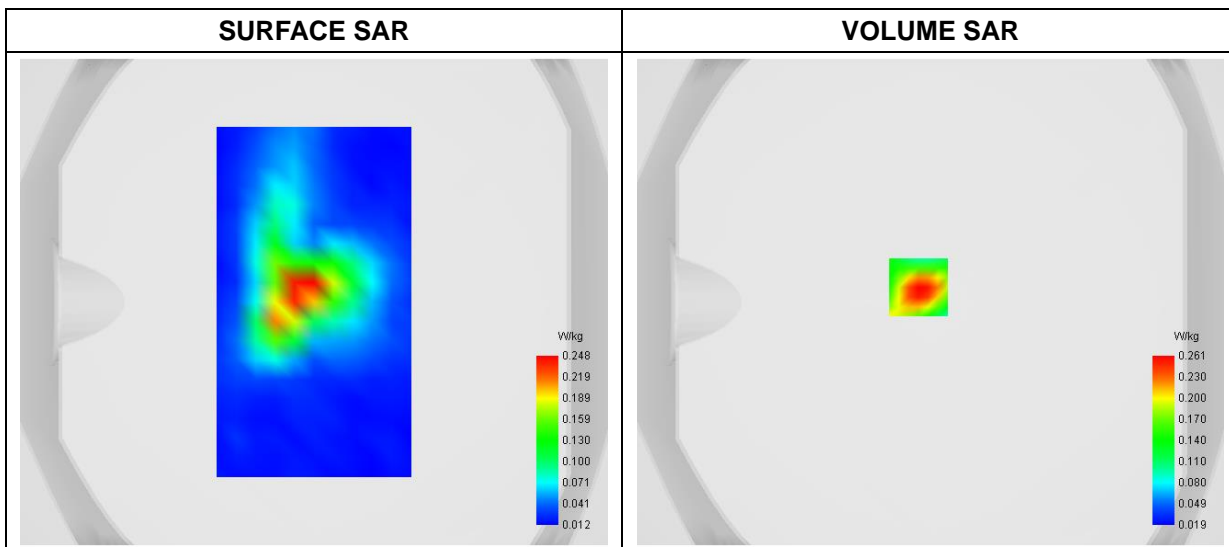
A. Experimental conditions

Area Scan	dx=8mm dy=8mm
Zoom Scan	dx=4mm dy=4mm dz=2mm
Phantom	Flat Plane
Device Position	Back
Band	LTE Band 40(2305-2315MHz)
Channels	QPSK, 10MHz, 1RB, Middle
Signal	Duty Cycle 1:1

B. SAR Measurement Results

Frequency (MHz)	2310.000000
Relative Permittivity (real part)	51.962168
Conductivity (S/m)	1.793096
Power Variation (%)	-1.750000
Ambient Temperature	22.5
Liquid Temperature	22.5

C. SAR Surface and Volume



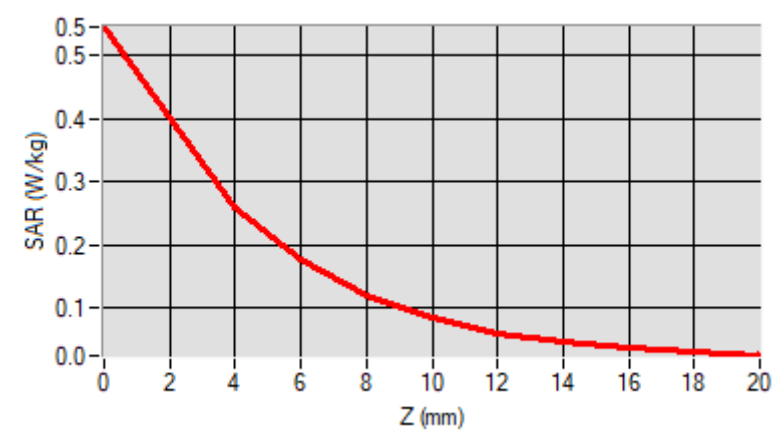
Maximum location: X=-5.00, Y=6.00

D. SAR 1g & 10g

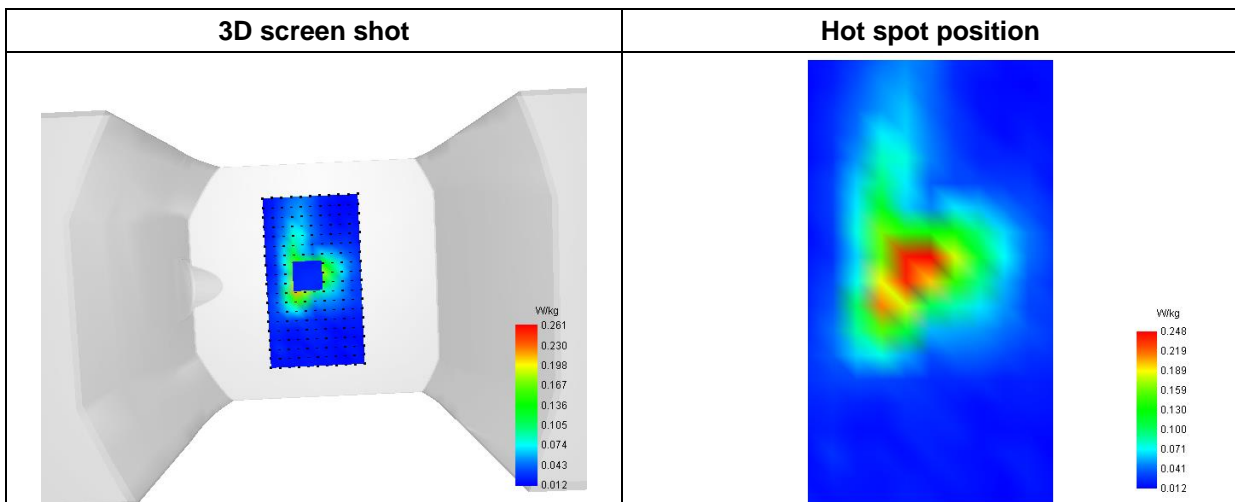
SAR 10g (W/Kg)	0.111552
SAR 1g (W/Kg)	0.244386

E. Z Axis Scan

Z (mm)	0.00	4.00	6.00	8.00	10.00	12.00	14.00	16.00	18.00
SAR (W/Kg)	0.5456	0.2606	0.1773	0.1207	0.0844	0.0613	0.0465	0.0369	0.0303



F. 3D Image



MEASUREMENT 14

Type: Phone measurement (Complete)
 Date of measurement: 2022-10-31
 Measurement duration: 12 minutes 3 seconds

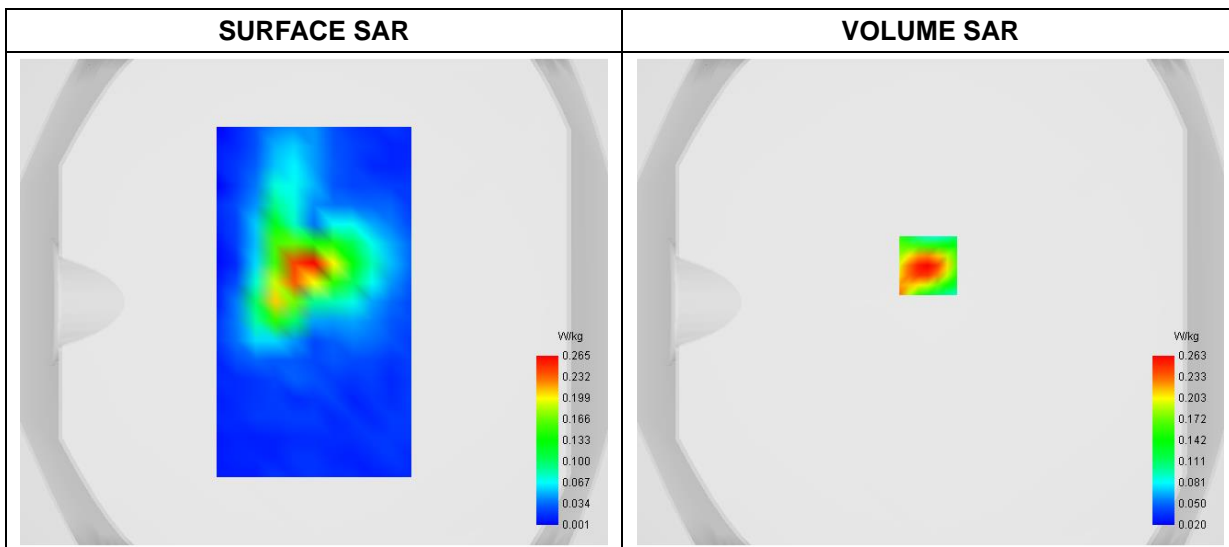
A. Experimental conditions

Area Scan	dx=8mm dy=8mm
Zoom Scan	dx=4mm dy=4mm dz=2mm
Phantom	Flat Plane
Device Position	Back
Band	LTE Band 40(2350-2360MHz)
Channels	QPSK, 10MHz, 1RB, Middle
Signal	Duty Cycle 1:1

B. SAR Measurement Results

Frequency (MHz)	2355.000000
Relative Permittivity (real part)	51.951668
Conductivity (S/m)	1.793604
Power Variation (%)	1.150000
Ambient Temperature	22.5
Liquid Temperature	22.5

C. SAR Surface and Volume



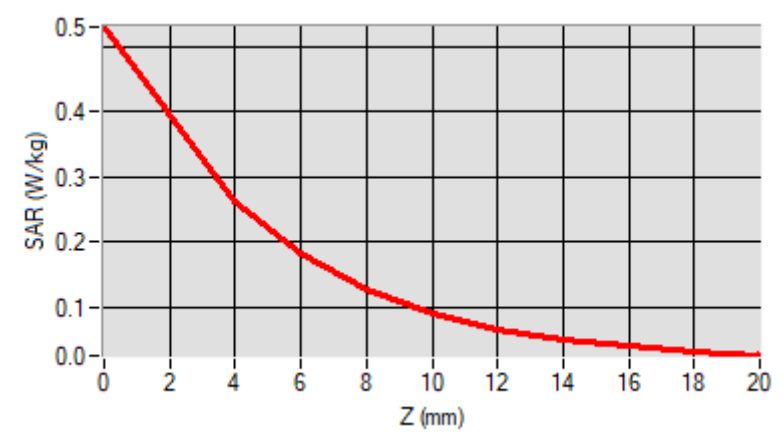
Maximum location: X=-1.00, Y=15.00

D. SAR 1g & 10g

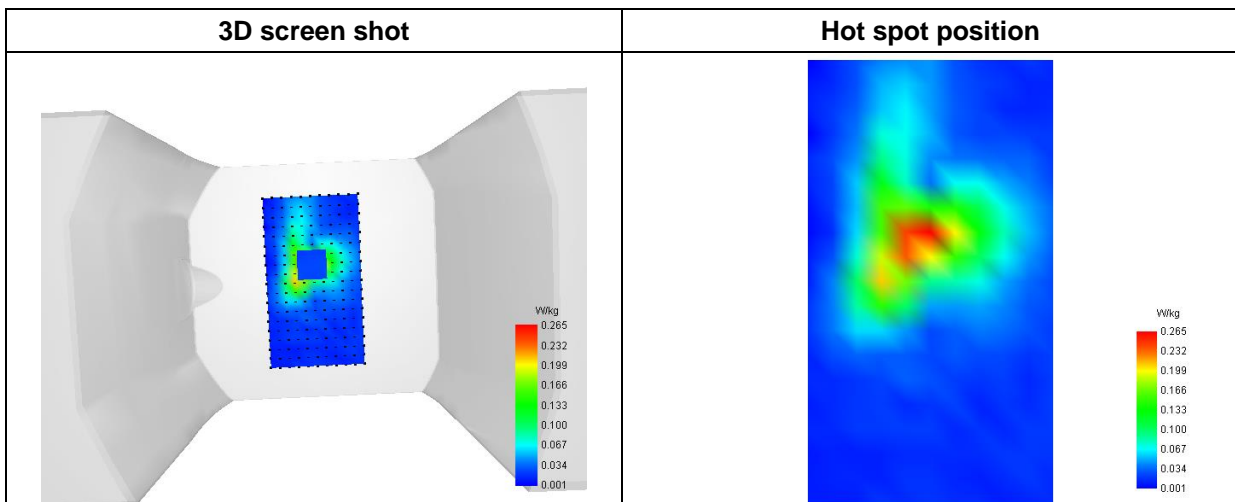
SAR 10g (W/Kg)	0.112881
SAR 1g (W/Kg)	0.244169

E. Z Axis Scan

Z (mm)	0.00	4.00	6.00	8.00	10.00	12.00	14.00	16.00	18.00
SAR (W/Kg)	0.5305	0.2635	0.1835	0.1278	0.0909	0.0666	0.0504	0.0394	0.0315



F. 3D Image



MEASUREMENT 15

Type: Phone measurement (Complete)
 Date of measurement: 2022-10-28
 Measurement duration: 12 minutes 3 seconds

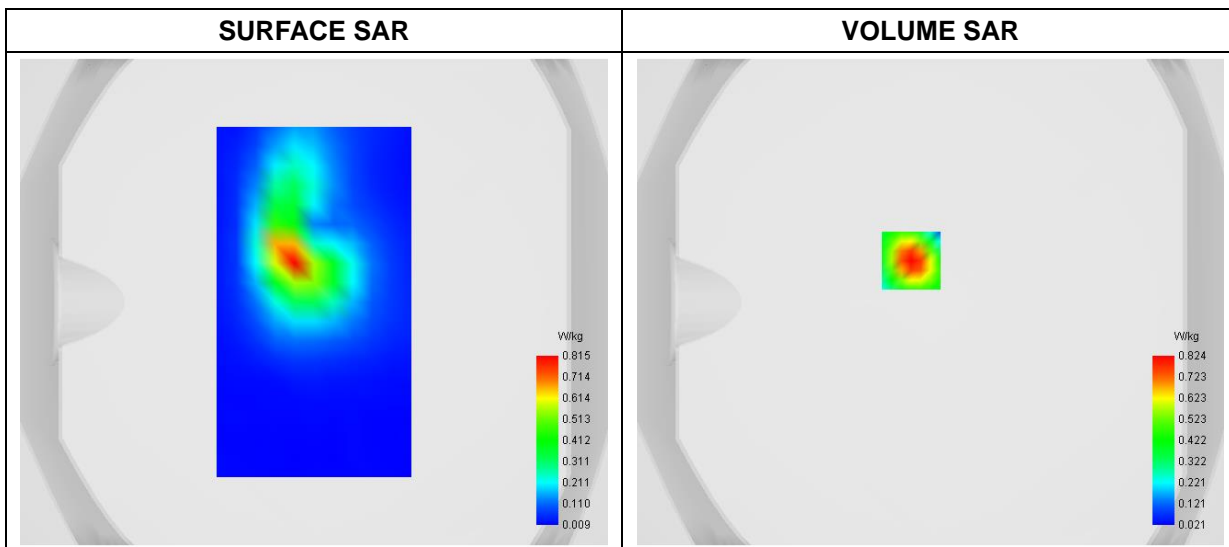
A. Experimental conditions

Area Scan	dx=8mm dy=8mm
Zoom Scan	dx=4mm dy=4mm dz=2mm
Phantom	Flat Plane
Device Position	Back
Band	LTE Band 41
Channels	QPSK, 20MHz, 1RB, Low
Signal	Duty Cycle 1:1

B. SAR Measurement Results

Frequency (MHz)	1720.000000
Relative Permittivity (real part)	54.482575
Conductivity (S/m)	1.511879
Power Variation (%)	4.050000
Ambient Temperature	22.8
Liquid Temperature	22.8

C. SAR Surface and Volume



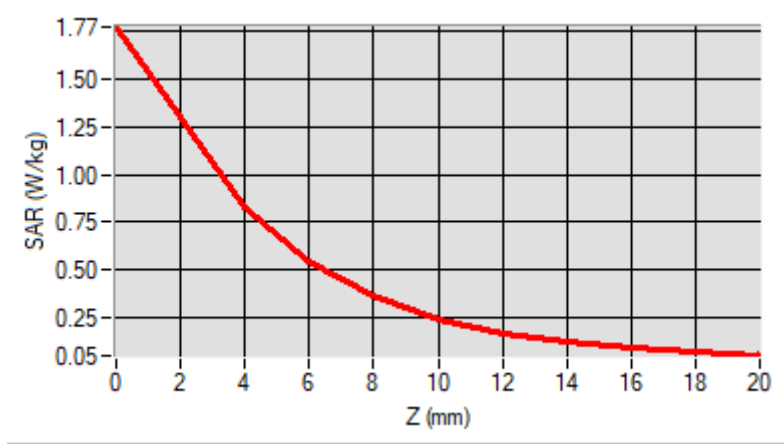
Maximum location: X=-8.00, Y=17.00

D. SAR 1g & 10g

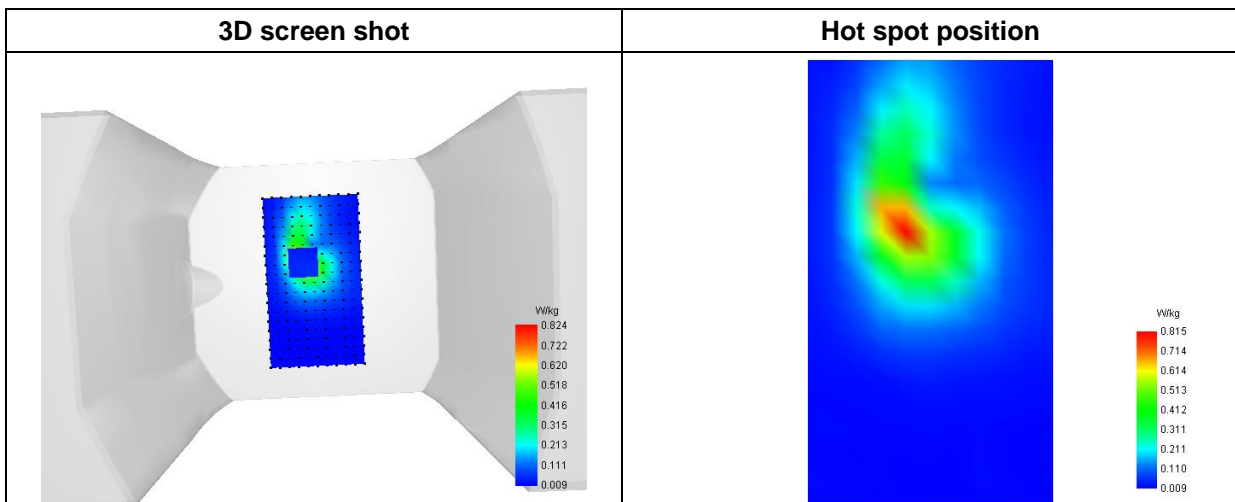
SAR 10g (W/Kg)	0.320977
SAR 1g (W/Kg)	0.757310

E. Z Axis Scan

Z (mm)	0.00	4.00	6.00	8.00	10.00	12.00	14.00	16.00	18.00
SAR (W/Kg)	1.7714	0.8236	0.5485	0.3627	0.2441	0.1690	0.1213	0.0903	0.0691



F. 3D Image



MEASUREMENT 16

Type: Phone measurement (Complete)
 Date of measurement: 2022-10-31
 Measurement duration: 12 minutes 3 seconds

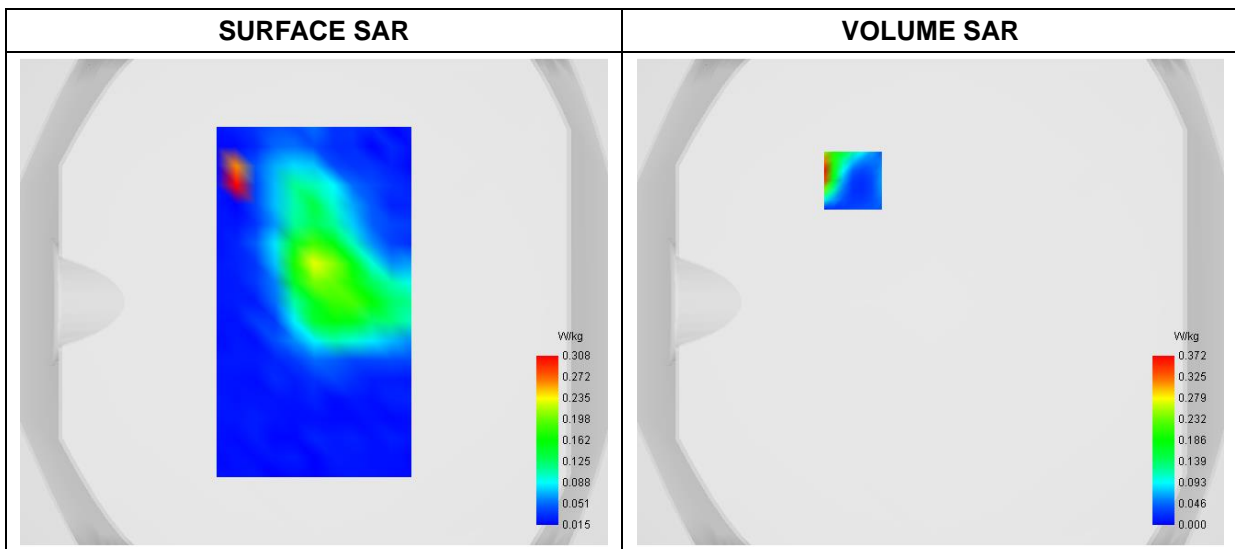
A. Experimental conditions

Area Scan	dx=8mm dy=8mm
Zoom Scan	dx=4mm dy=4mm dz=2mm
Phantom	Flat Plane
Device Position	Back
Band	WiFi_802.11b
Channels	Middle
Signal	Duty Cycle 1:1

B. SAR Measurement Results

Frequency (MHz)	2437.000000
Relative Permittivity (real part)	52.963115
Conductivity (S/m)	1.931286
Power Variation (%)	1.930000
Ambient Temperature	22.5
Liquid Temperature	22.5

C. SAR Surface and Volume



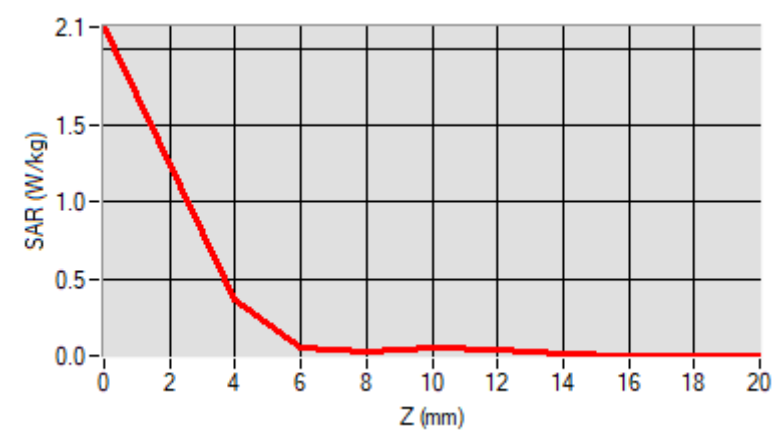
Maximum location: X=-32.00, Y=50.00

D. SAR 1g & 10g

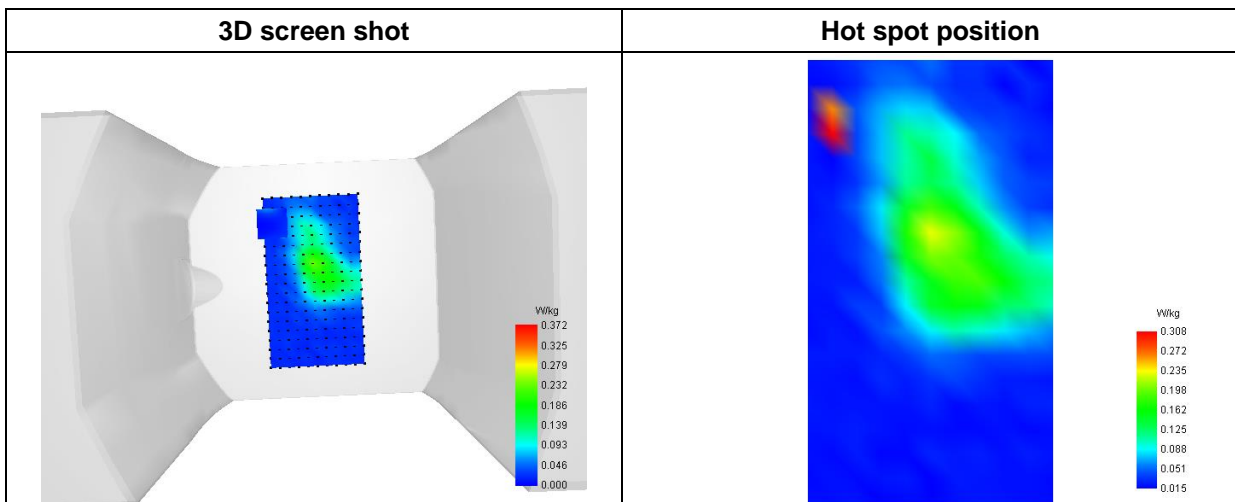
SAR 10g (W/Kg)	0.096349
SAR 1g (W/Kg)	0.326237

E. Z Axis Scan

Z (mm)	0.00	4.00	6.00	8.00	10.00	12.00	14.00	16.00	18.00
SAR (W/Kg)	2.1390	0.3717	0.0481	0.0211	0.0506	0.0398	0.0101	0.0060	0.0000



F. 3D Image



MEASUREMENT 17

Type: Phone measurement (Complete)
 Date of measurement: 2022-10-31
 Measurement duration: 12 minutes 3 seconds

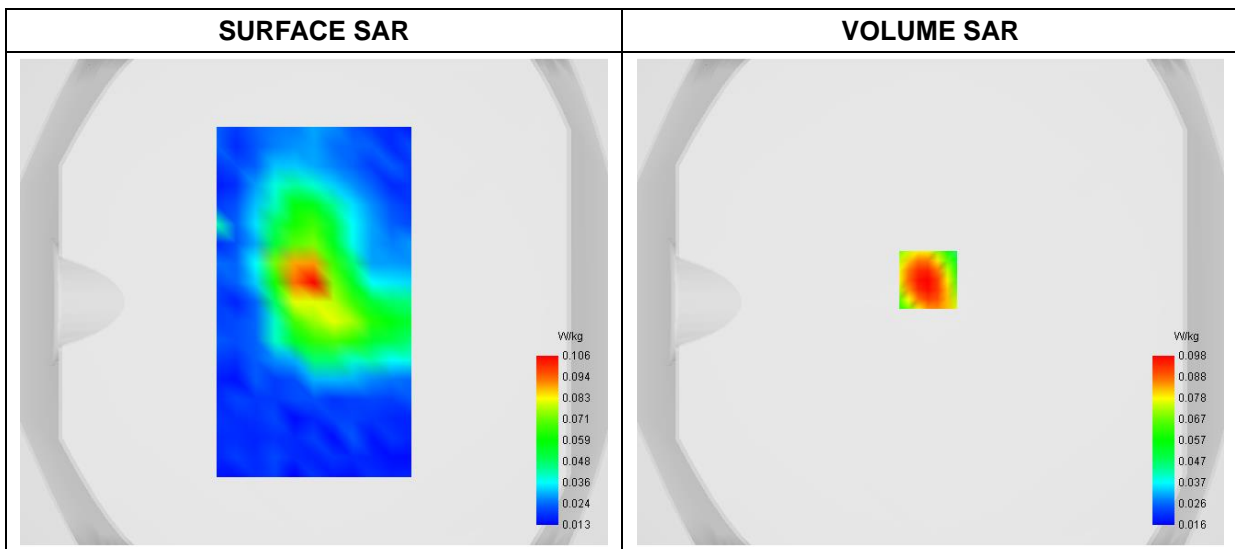
A. Experimental conditions

Area Scan	dx=8mm dy=8mm
Zoom Scan	dx=4mm dy=4mm dz=2mm
Phantom	Flat Plane
Device Position	Back
Band	Bluetooth
Channels	High
Signal	Duty Cycle 1:1

B. SAR Measurement Results

Frequency (MHz)	2480.000000
Relative Permittivity (real part)	52.971415
Conductivity (S/m)	1.931826
Power Variation (%)	3.130000
Ambient Temperature	22.5
Liquid Temperature	22.5

C. SAR Surface and Volume



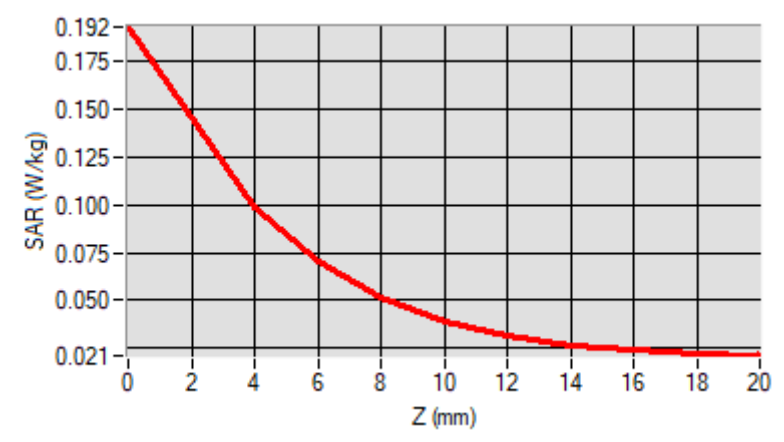
Maximum location: X=-1.00, Y=9.00

D. SAR 1g & 10g

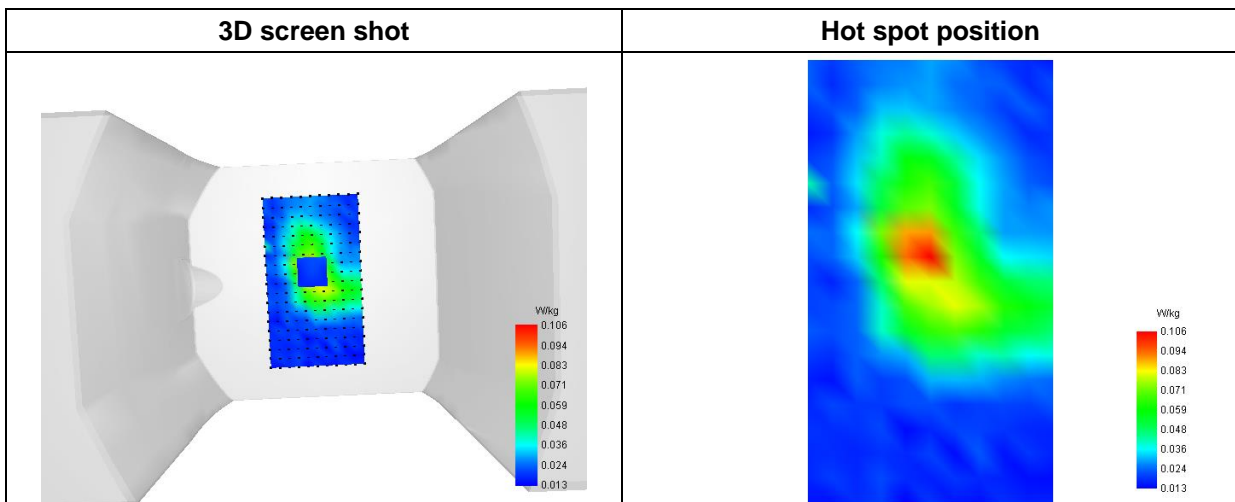
SAR 10g (W/Kg)	0.052158
SAR 1g (W/Kg)	0.094865

E. Z Axis Scan

Z (mm)	0.00	4.00	6.00	8.00	10.00	12.00	14.00	16.00	18.00
SAR (W/Kg)	0.1925	0.0984	0.0706	0.0516	0.0394	0.0317	0.0269	0.0241	0.0224



F. 3D Image



Annex C. EUT Photos

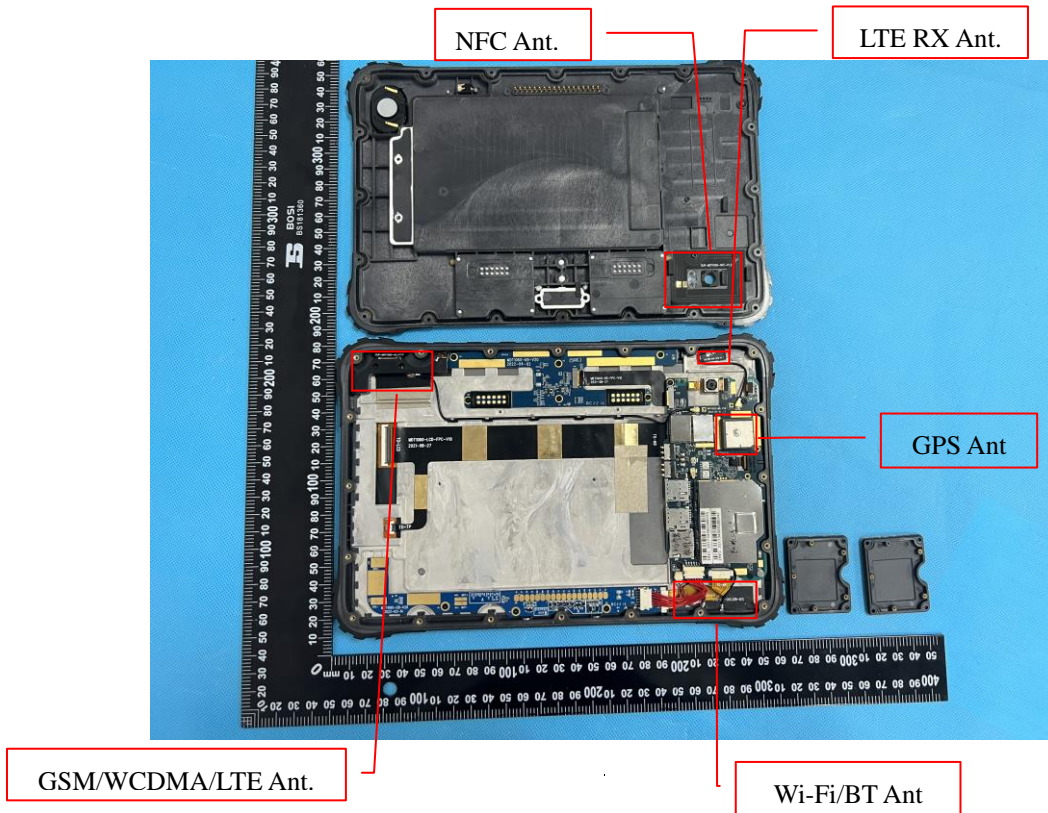
EUT View 1



EUT View 2



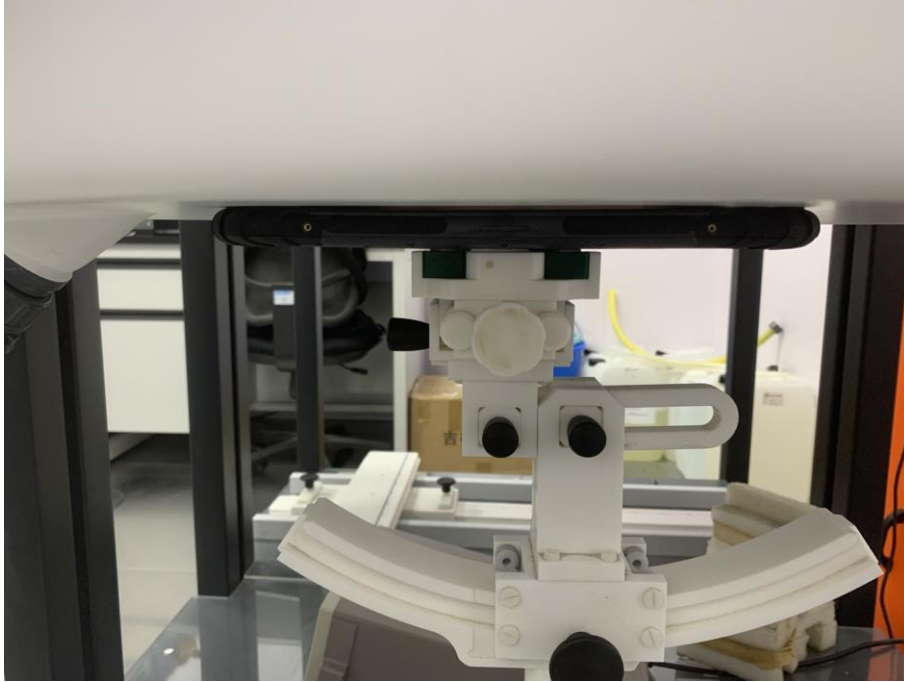
Antenna View



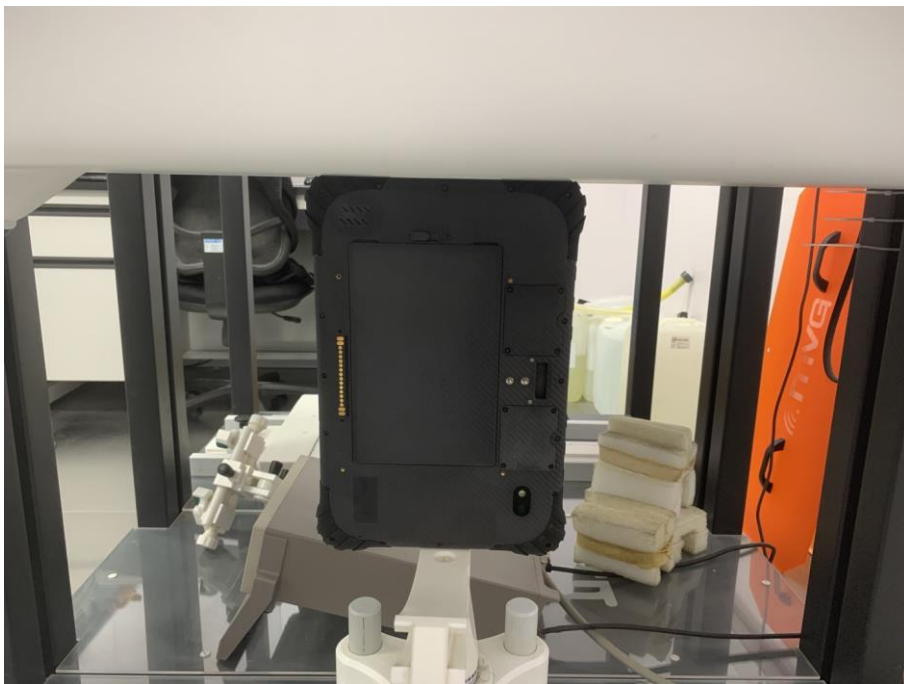
Annex D. Test Setup Photos

Body mode Exposure Conditions
Test distance: 0mm

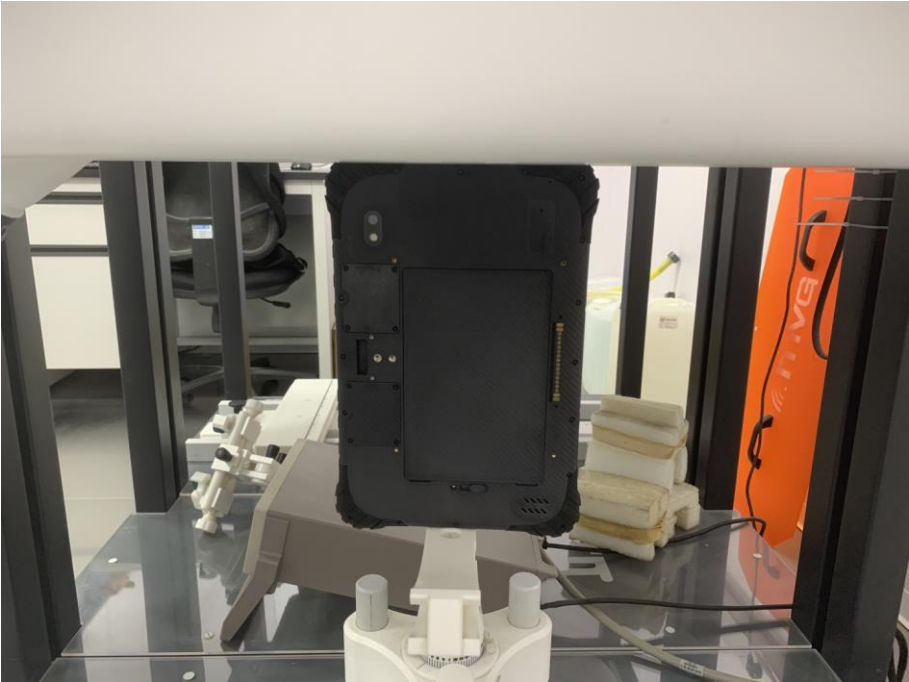
Body Back



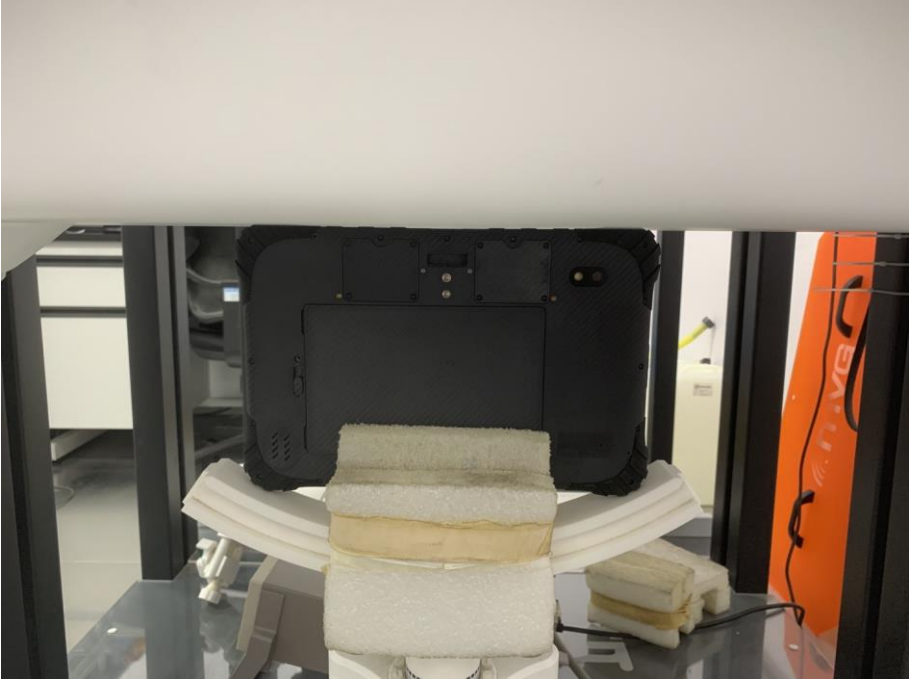
Body Right



Body Left



Body Top



Body Bottom



Annex E. Calibration Certificate

Please refer to the exhibit for the calibration certificate

******* END OF REPORT *******