

# 此页不印刷

**xTool 控制模块 用户手册 英语版\_V1.0\_D1.1.2\_物料编号**

成品尺寸：210\*140mm

展开尺寸：420\*140mm

材质：封面157g铜版纸，内页80g书写纸

工艺：封面覆哑膜，双面CMYK印刷，骑马钉

**XTOOL**

**XTOOL**

**Smart Control  
User Manual**



<b>Statement</b>	01
<b>Safety first (important)</b>	01
<b>List of items</b>	02
<b>Specifications</b>	02
<b>Meet your smart control</b>	03
<b>Preparations</b>	04
<b>Use the device</b>	10
<b>Error code description</b>	11
<b>How to charge the smart control?</b>	12
<b>Declaration of conformity</b>	13
<b>After-sales services</b>	13

## Statement

Thank you for choosing xTool products!

If you use the product for the first time, read carefully all the accompanying materials of the product to improve your experience with it. If you do not use the product according to the instructions and requirements of the Manual, or mis-operate the product due to misunderstanding, etc., the Company shall bear no responsibility for any loss resulting therefrom.

The Company has collated the content of the Manual rigorously and carefully, but errors or omissions may remain.

The Company is committed to continuously improving product functions and service quality, and therefore reserves the right to change any product or software described in the Manual and the content of the Manual at any time.

The Manual is intended to help you use the product properly and does not include any description of hardware and software configuration. For product configuration, refer to the related contract (if any) and packing list, or consult your distributor. Images in the Manual are for reference only and the actual product may vary.

Protected by copyright laws and regulations, the Manual shall not be reproduced or transcribed in any way, or be transmitted on any wired or wireless network in any manner, or be translated into any language, or be modified in any way, such as content, image, or layout modification, without the prior written authorization of the Company.

The Company is committed to continuously improving the product and related materials. The product and the Manual are subject to change, and updates can be found at [xtool.com](http://xtool.com).

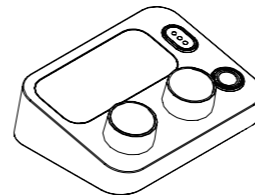
## Safety first (important)

Read and get familiar with all safety precautions and measures before using this product. Strictly follow all safety precautions. Ensure that this product is properly assembled and is working properly.

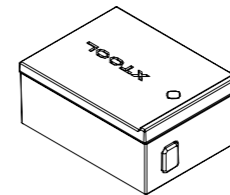
Follow the operating principles:

- Check the product for damage every time before you use it. Do not operate it in any way when any damage or defect is found.
- Ensure that the workspace is clean and flat.
- Do not leave the product unattended during operation. Pay attention to whether it is working properly.
- The machine works properly at the temperature of  $-10^{\circ}\text{C}$  to  $35^{\circ}\text{C}$  and can be stored at the temperature of  $-10^{\circ}\text{C}$  to  $45^{\circ}\text{C}$ . Do not operate it at a temperature lower than  $0^{\circ}\text{C}$ .

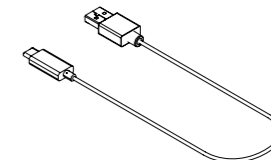
## List of items



Smart control



Transceiver



USB cable



User manual

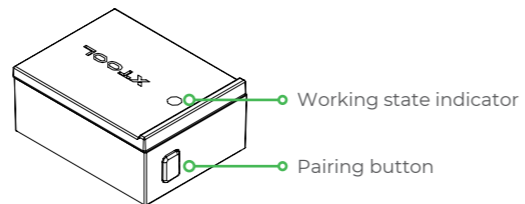
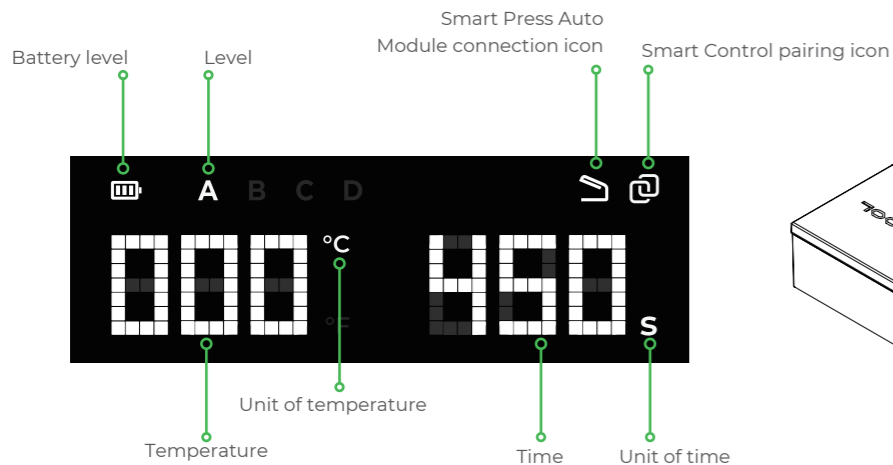
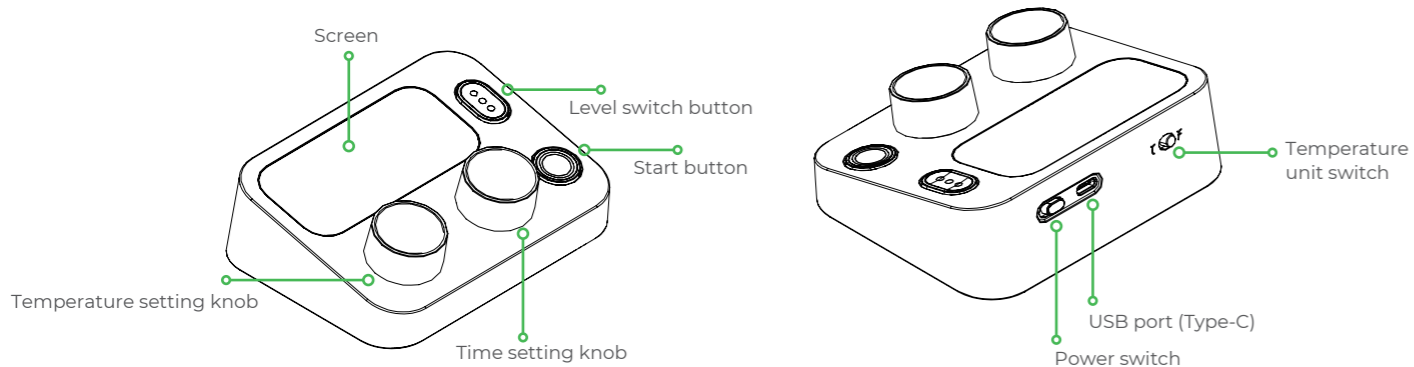
## Specifications

Size	117.2 mm x 91.4 mm x 35.1 mm
Temperature setting range	$100^{\circ}\text{C} \sim 205^{\circ}\text{C}$ ( $212^{\circ}\text{F} \sim 400^{\circ}\text{F}$ )
Time setting range	0s ~ 600s

## xTool Smart Control Transceiver

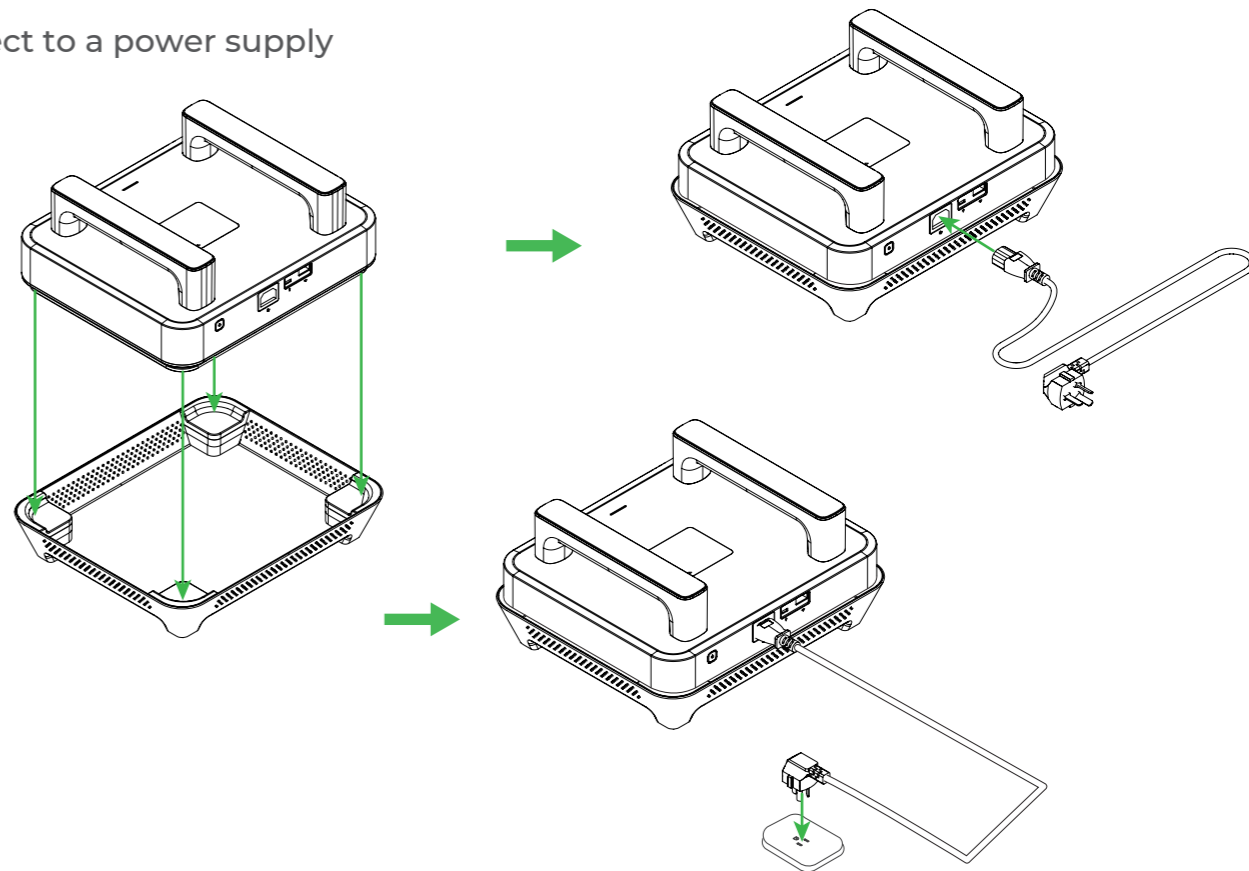
Model	MXH-P002a-001
Input	5V $\pm$ 100mA
Maximum RF transmit power	2.4G(2420-2470MHz)< 20 dBm
FCC ID	2AH9Q-MXHP002A
IC	22796-MXHP002A

## Meet your smart control

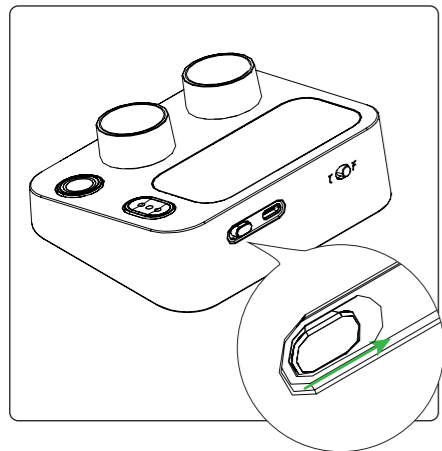


## Preparations

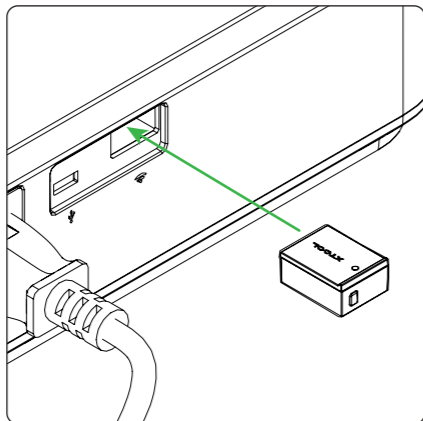
Connect to a power supply



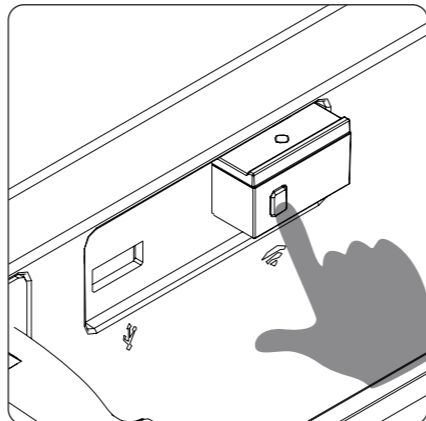
# Pair with the Smart Control



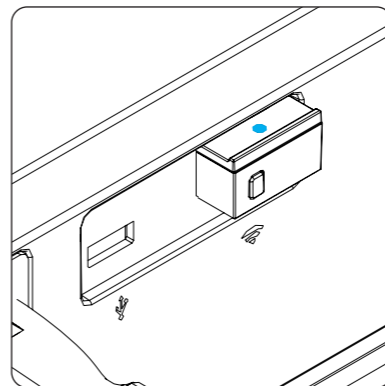
Toggle the switch to ON



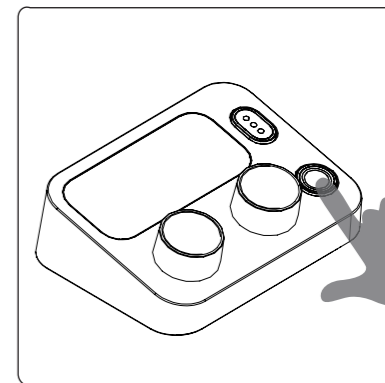
Insert the transceiver



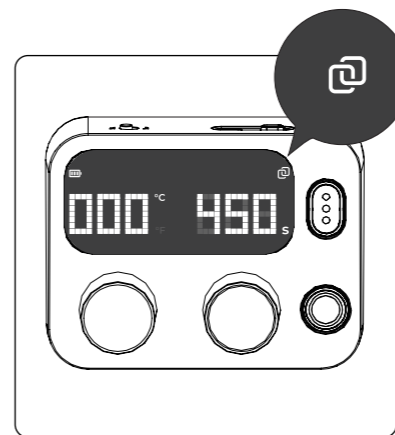
Hold down for 3s



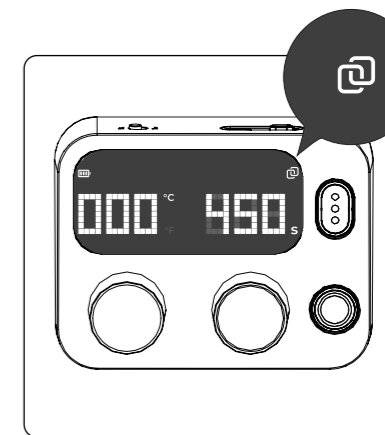
Blinking blue



Hold down for 3s



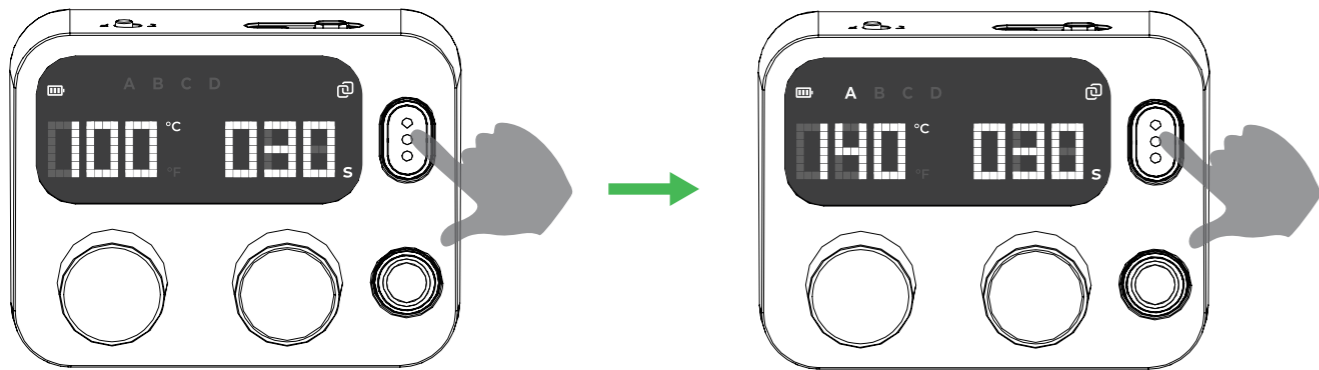
Blinking



Stopping blinking, pairing succeeded

## Smart Control settings

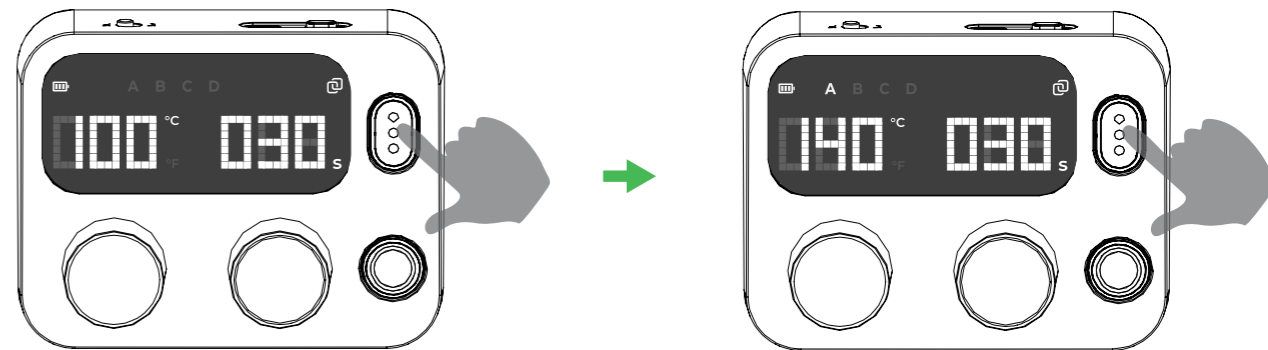
### 1. Switch between preset levels



Press to switch the level between A, B, C, and D

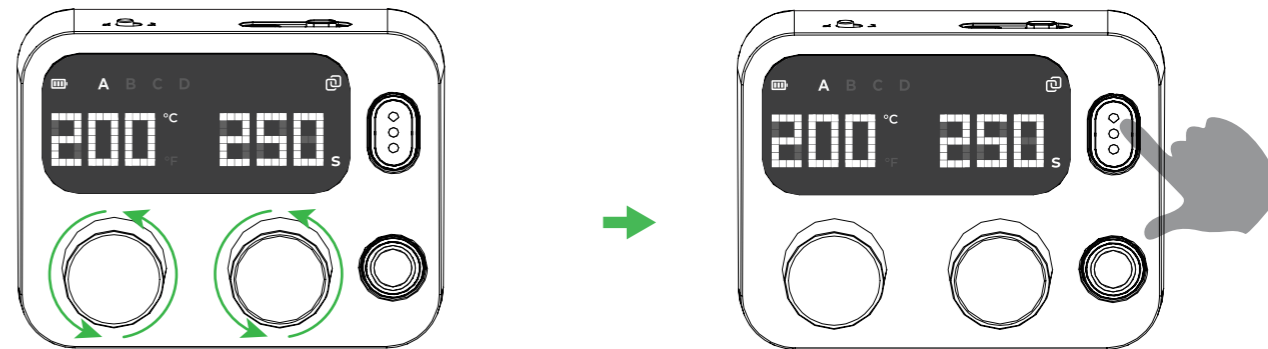
Level	Temperature	Time
A	140 C (285 F)	30s
B	160 C (320 F)	30s
C	195 C (385 F)	50s
D	205 C (400 F)	60s

### 2. Define a level yourself



Press

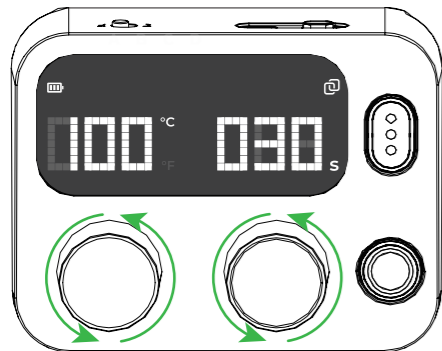
Select a level



Turn the knobs to adjust the temperature and time

Hold down 3s to save your setting as the level

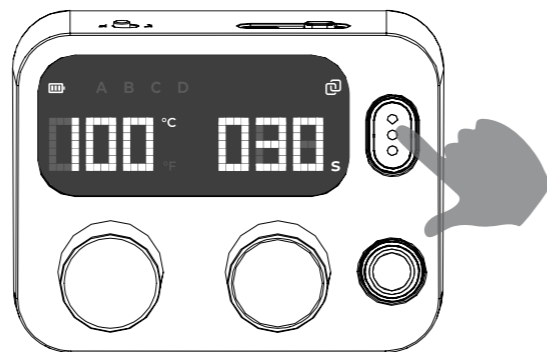
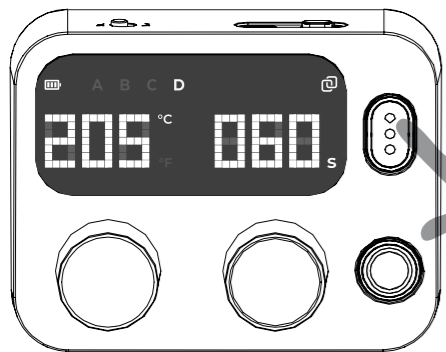
### 3. Set the time and temperature directly



Turn the knobs to adjust the temperature and time



Press the level switch button at level D to exit the level mode, and then set the time and temperature.



## Use the device







The usage of the smart control may vary according to heat pressing devices.

Visit [support.xtool.com](https://support.xtool.com) or scan the following QR code to find details about how to use xTool devices with the smart control.





## Error code description

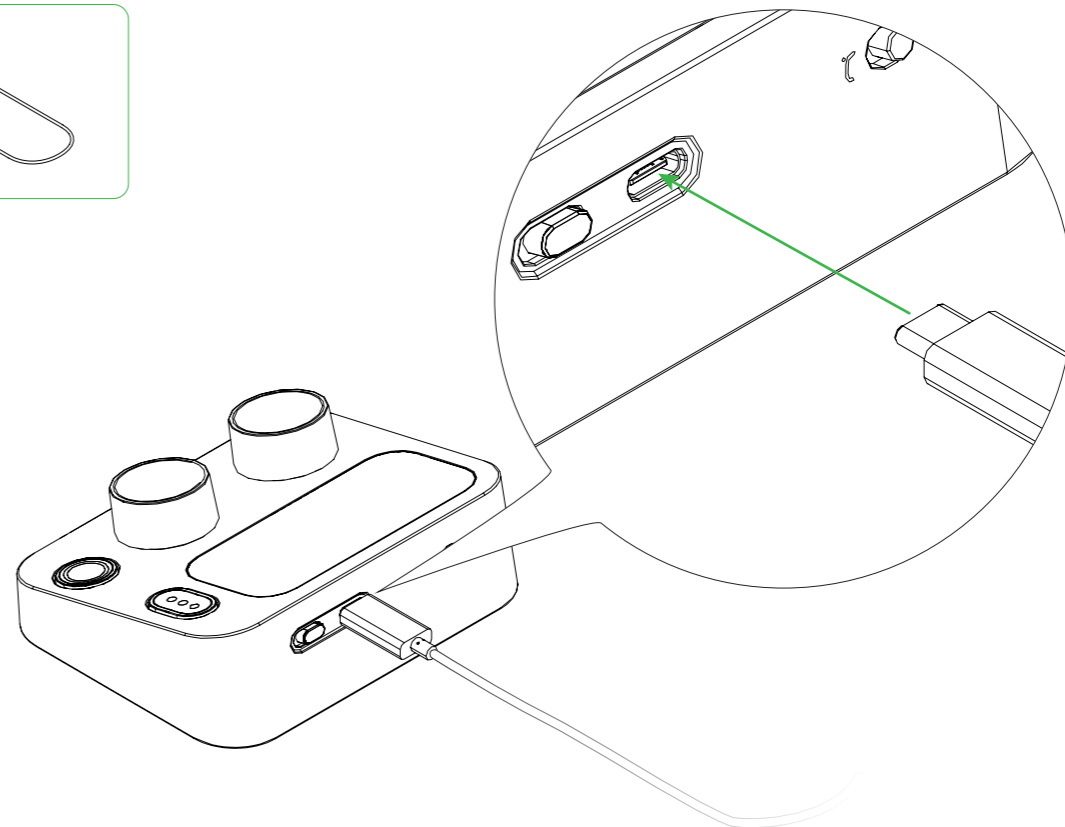
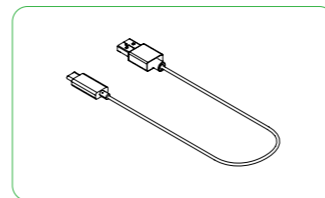
Error code	Description
	Exceptions occur on the temperature sensor on the heating plate.
	The temperature sensor is damaged.
	The heating plate cannot be heated.
	The temperature of the heating plate does not go as expected.
	The temperature of the heating plate does not go as expected.
	Exceptions occur on the temperature sensor on the circuit board.

Error code	Description
	The radiating fins are overheated.
	Exceptions occur when the heating plate is heated.
	Exceptions occur when the heating plate is heated.
	Exceptions occur when the heating plate is heated.
	Exceptions occur on the wireless chip.



If you see any error code displayed on the screen, contact xTool team for help.

## How to charge the Smart Control?



## Declaration of conformity

### EN

Hereby, Makeblock Co., Ltd., declares that this product is in compliance with the essential requirements and other relevant provisions of Directive RED 2014/53/EU and the RoHS directive 2011/65/EU.

### DE

Hiermit erklärt Makeblock Co., Ltd., dass dieses Produkt die grundlegenden Anforderungen und anderen relevanten Vorschriften der Richtlinie RED 2014/53/EU und der RoHS-Richtlinie 2011/65/EU einhält.

### PT

Pelo presente, a Makeblock Co., Ltd., declara que este produto está em conformidade com os requisitos essenciais e outras disposições relevantes da Diretiva RED 2014/53/UE e da Diretiva RoHS 2011/65/UE.

### IT

la Makeblock Co., Ltd., con la presente dichiara che questo prodotto è conforme ai requisiti essenziali ed alle altre disposizioni pertinenti alla direttiva RED 2014/53/UE e della direttiva RoHS 2011/65/UE.

### ES

Makeblock Co. Ltd. declara por la presente que este producto cumple los requisitos esenciales y otras disposiciones pertinentes de la directiva RED 2014/53/UE y la directiva RoHS 2011/65/UE.

### FR

Makeblock Co., Ltd. déclare par la présente que ce produit est conforme aux principales exigences et autres dispositions pertinentes de la directive Directive RED 2014/53/UE et de la directive RoHS 2011/65/UE.

## After-sales services

For technical support, contact us at [support@xtool.com](mailto:support@xtool.com).

For more information about after-sales services, visit [support.xtool.com](http://support.xtool.com).

## FCC statement

This device complies with Part 15 of the FCC Rules. Operation is subject to the following two conditions:

(1) This device may not cause harmful interference, and (2) This device must accept any interference received, including interference that may cause undesired operation.

Warning: Changes or modifications not expressly approved by the party responsible for compliance could void the user's authority to operate the equipment.

NOTE: This equipment has been tested and found to comply with the limits for a Class B digital device, pursuant to Part 15 of the FCC Rules. These limits are designed to provide reasonable protection against harmful interference in a residential installation. This equipment generates uses and can radiate radio frequency energy and, if not installed and used in accordance with the instructions, may cause harmful interference to radio communications. However, there is no guarantee that interference will not occur in a particular installation. If this equipment does cause harmful interference to radio or television reception, which can be determined by turning the equipment off and on, the user is encouraged to try to correct the interference by one or more of the following measures:

- Reorient or relocate the receiving antenna.
- Increase the separation between the equipment and receiver.
- Connect the equipment to an outlet on a circuit different from that to which the receiver is connected.
- Consult the dealer or an experienced radio/TV technician for help.

### FCC radiation exposure statement(For Smart Control Transceiver)

This equipment complies with FCC radiation exposure limits set forth for an uncontrolled environment. This equipment should be installed and operated with a minimum distance of 20 cm between the radiator and your body.

RF warning statement:(For Smart Control)

The device has been evaluated to meet general RF exposure requirement. The device can be used in portable exposure condition without restriction.

- English: "

This device complies with Industry Canada licence-exempt RSS standard(s). Operation is subject to the following two conditions:

- (1) this device may not cause interference, and
- (2) this device must accept any interference, including interference that may cause undesired operation of the device."

- French:"

Le présent appareil est conforme aux CNR d'Industrie Canada applicables aux appareils radio exempts de licence. L'exploitation est autorisée aux deux conditions suivantes :

- (1) l'appareil n' doit pas produire de brouillage, et
- (2) l'utilisateur de l'appareil doit accepter tout brouillage radioélectrique subi, même si le brouillage est susceptible d'en compromettre le fonctionnement."