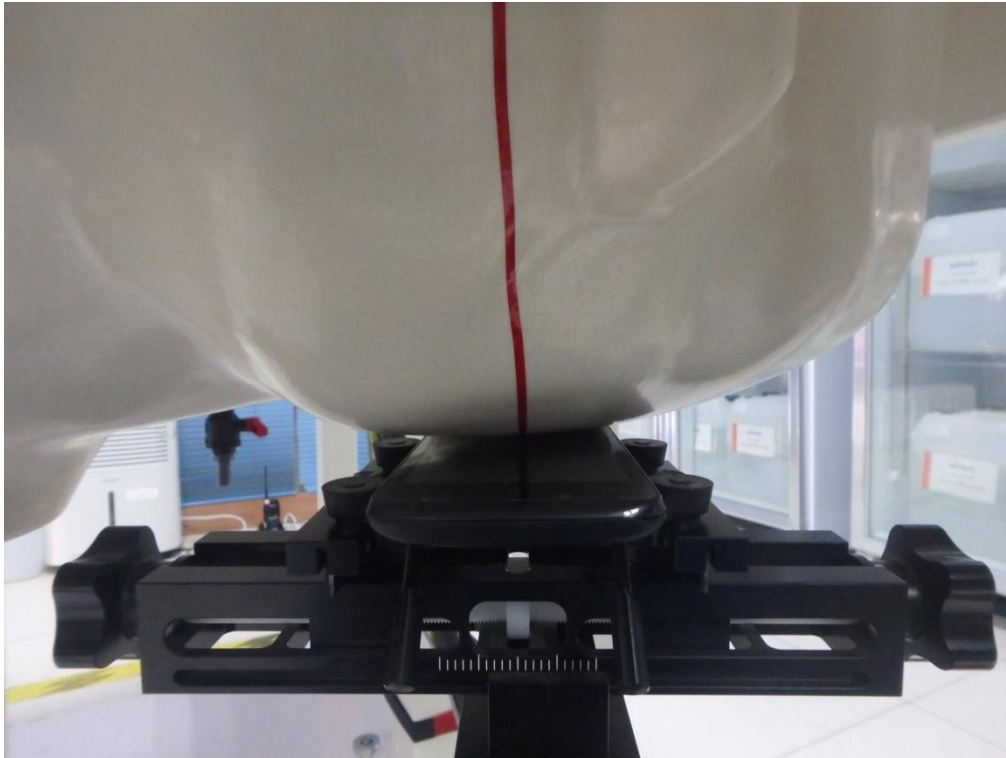


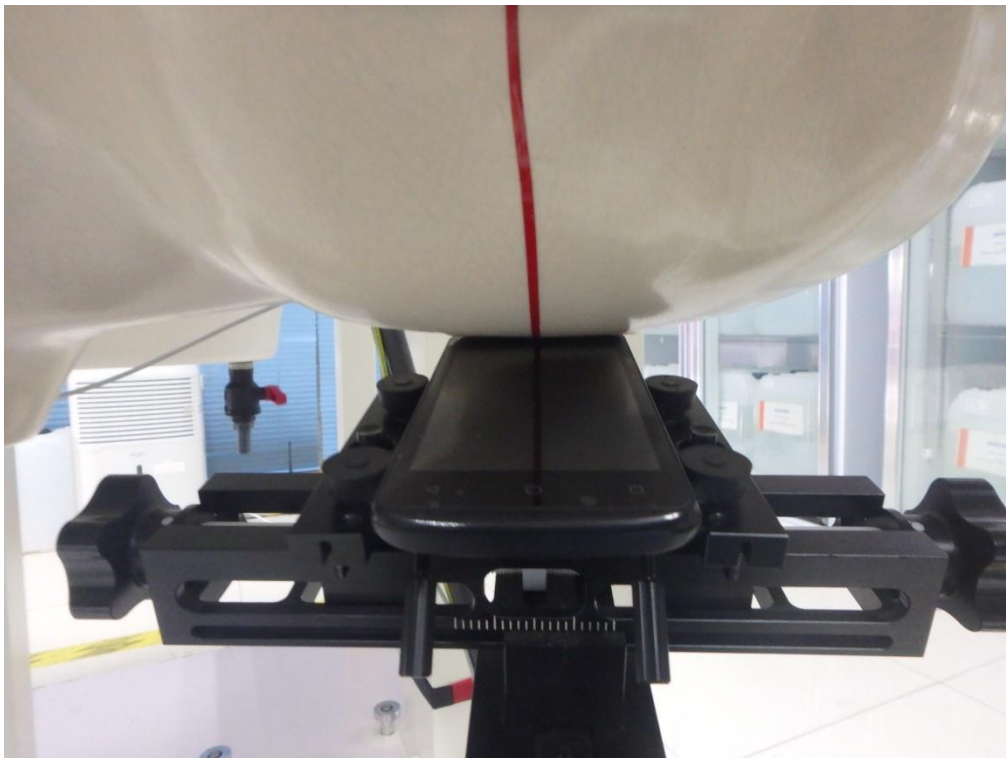
TEST SETUP PHOTOGRAPHS & EUT PHOTOGRAPHS

Test Setup Photographs

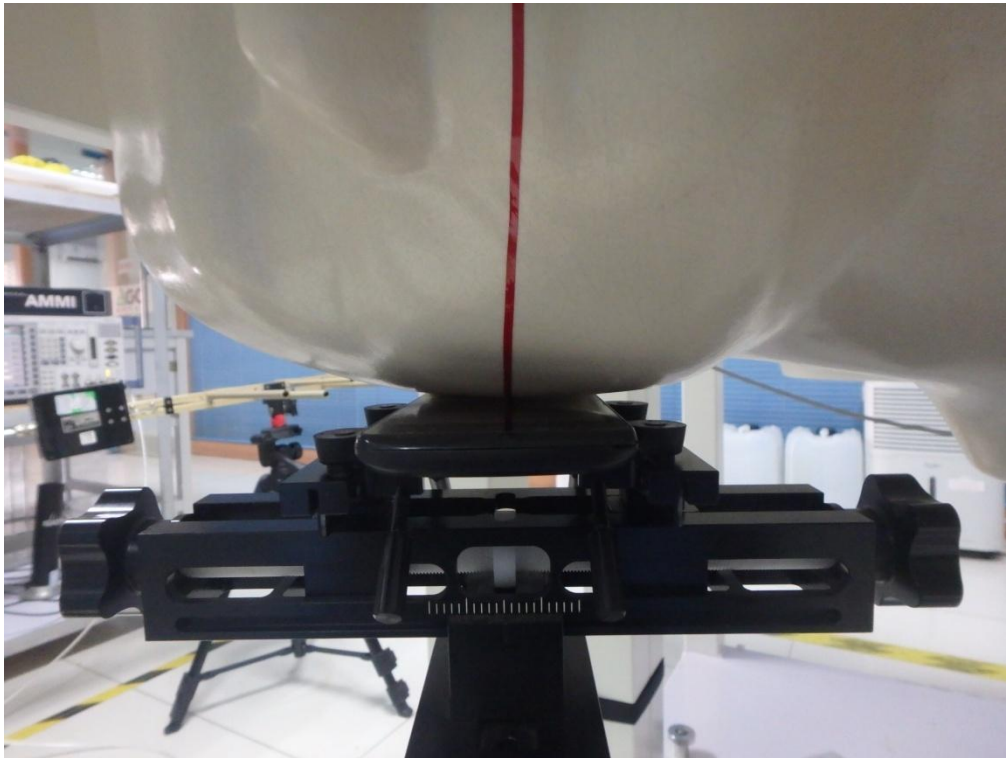
LEFT-CHEEK TOUCH



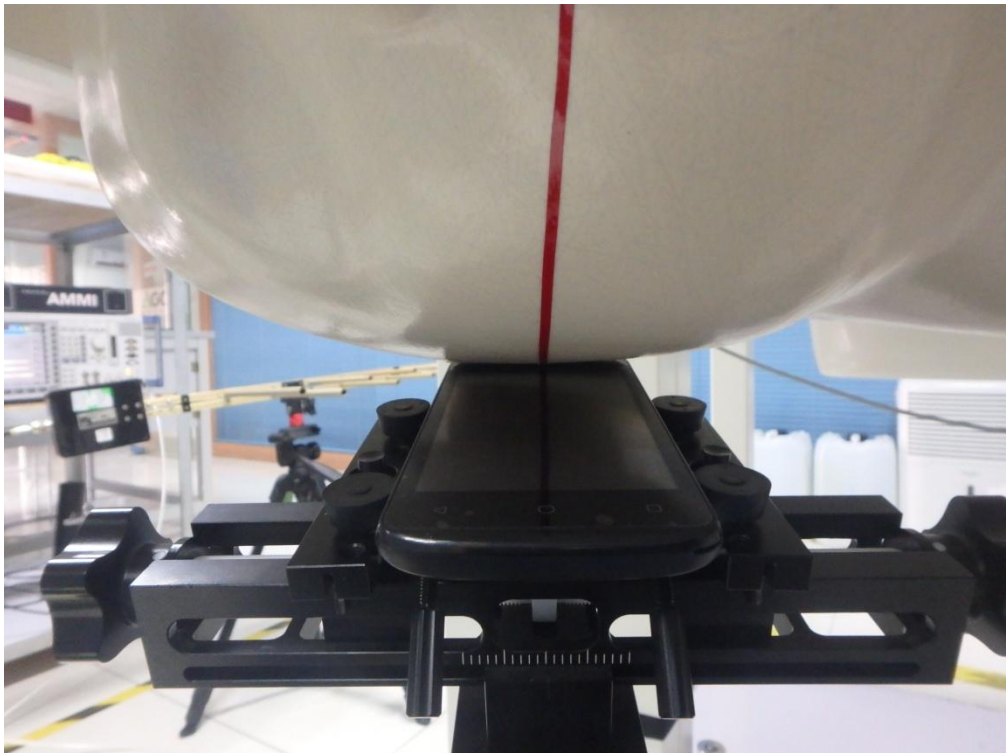
LEFT-TILT 15°



RIGHT-CHEEK TOUCH



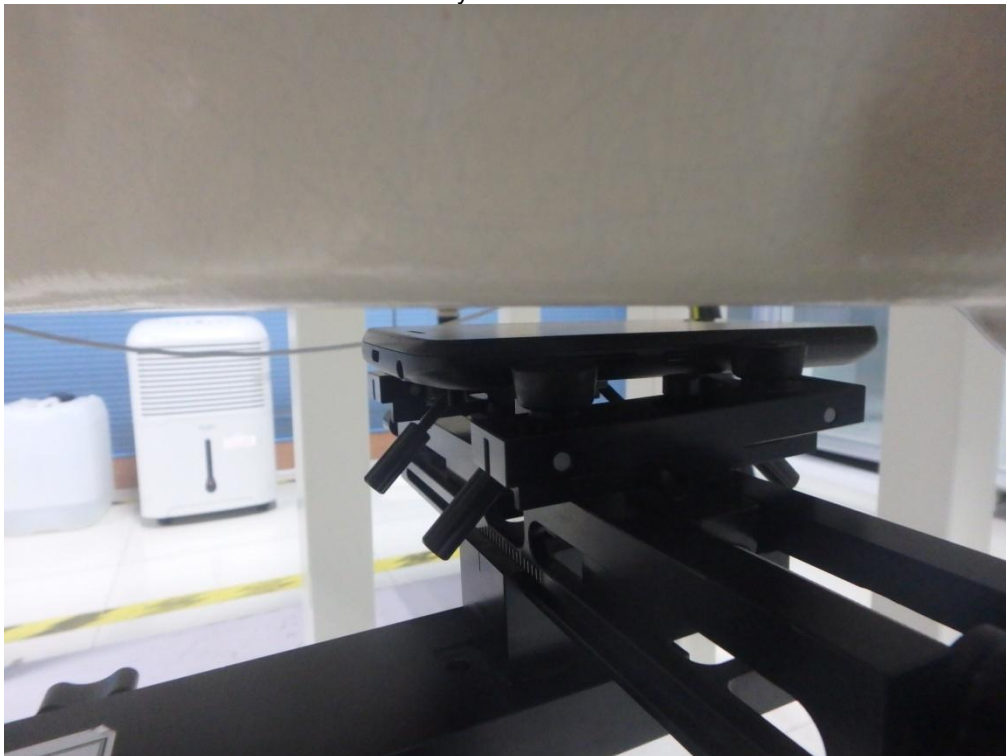
RIGHT-TILT 15°



Body Back 5mm



Body Front 5mm



Edge 1(Top) 10mm



Edge 2(Right) 10mm



Edge 3(Bottom) 10mm

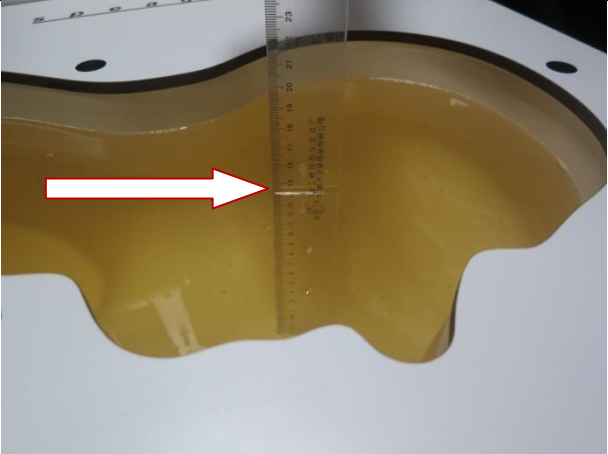
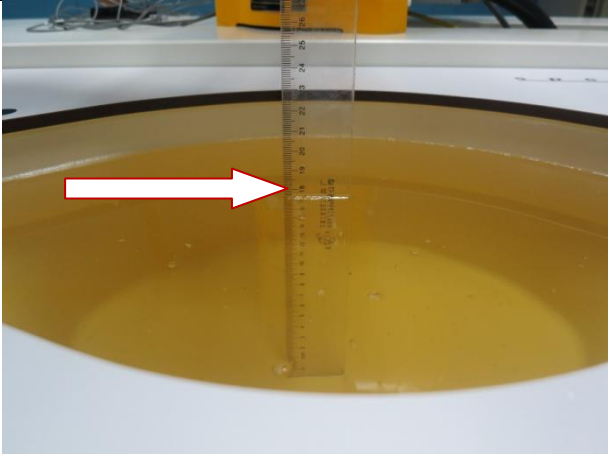
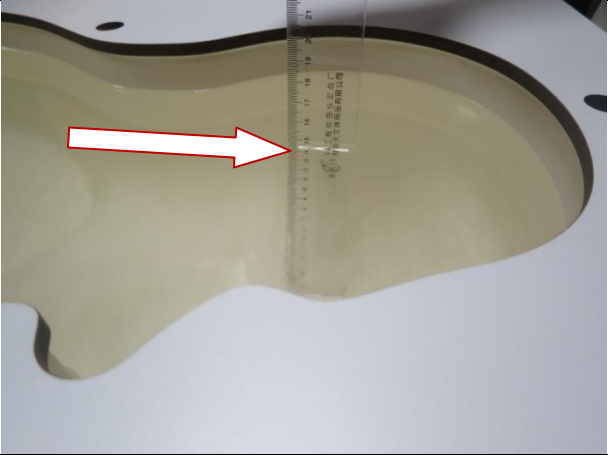
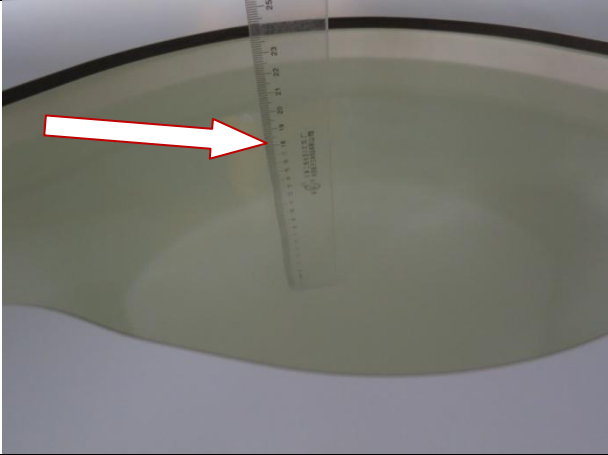
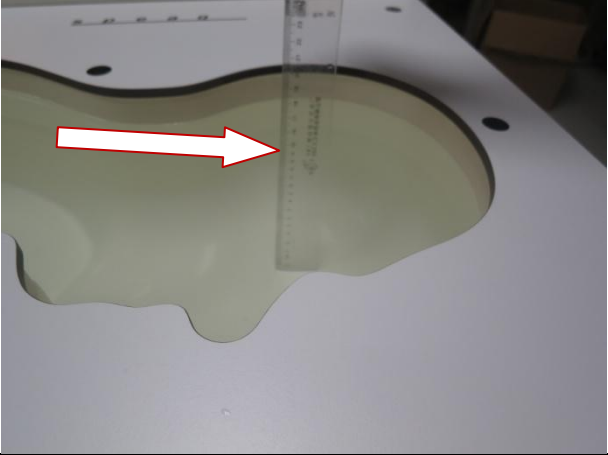
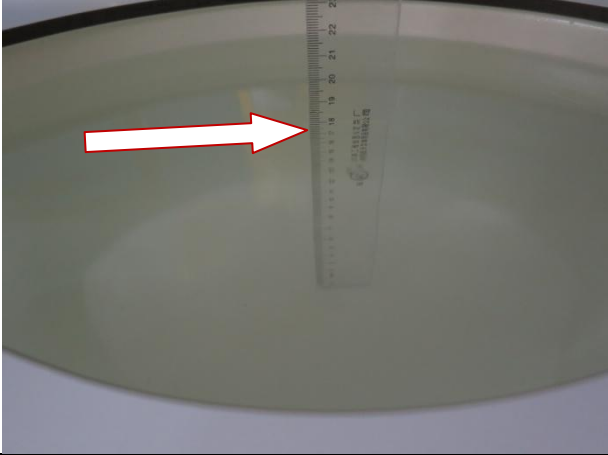


Edge 4(Left) 10mm



DEPTH OF THE LIQUID IN THE PHANTOM—ZOOM IN

Note : The position used in the measurement were according to IEEE 1528-2013

<p>850MHz head</p>  A photograph showing a ruler placed vertically inside a yellow liquid-filled phantom. A red arrow points to the liquid surface, which is at approximately 18 cm on the ruler.	<p>850MHz body</p>  A photograph showing a ruler placed vertically inside a yellow liquid-filled phantom. A red arrow points to the liquid surface, which is at approximately 18 cm on the ruler.
<p>1900MHz head</p>  A photograph showing a ruler placed vertically inside a yellow liquid-filled phantom. A red arrow points to the liquid surface, which is at approximately 18 cm on the ruler.	<p>1900MHz body</p>  A photograph showing a ruler placed vertically inside a yellow liquid-filled phantom. A red arrow points to the liquid surface, which is at approximately 18 cm on the ruler.
<p>2450MHz head</p>  A photograph showing a ruler placed vertically inside a yellow liquid-filled phantom. A red arrow points to the liquid surface, which is at approximately 18 cm on the ruler.	<p>2450MHz body</p>  A photograph showing a ruler placed vertically inside a yellow liquid-filled phantom. A red arrow points to the liquid surface, which is at approximately 18 cm on the ruler.

EUT PHOTOGRAPHS

All VIEW OF EUT



TOP VIEW OF EUT



BOTTOM VIEW OF EUT



FRONT VIEW OF EUT



BACK VIEW OF EUT



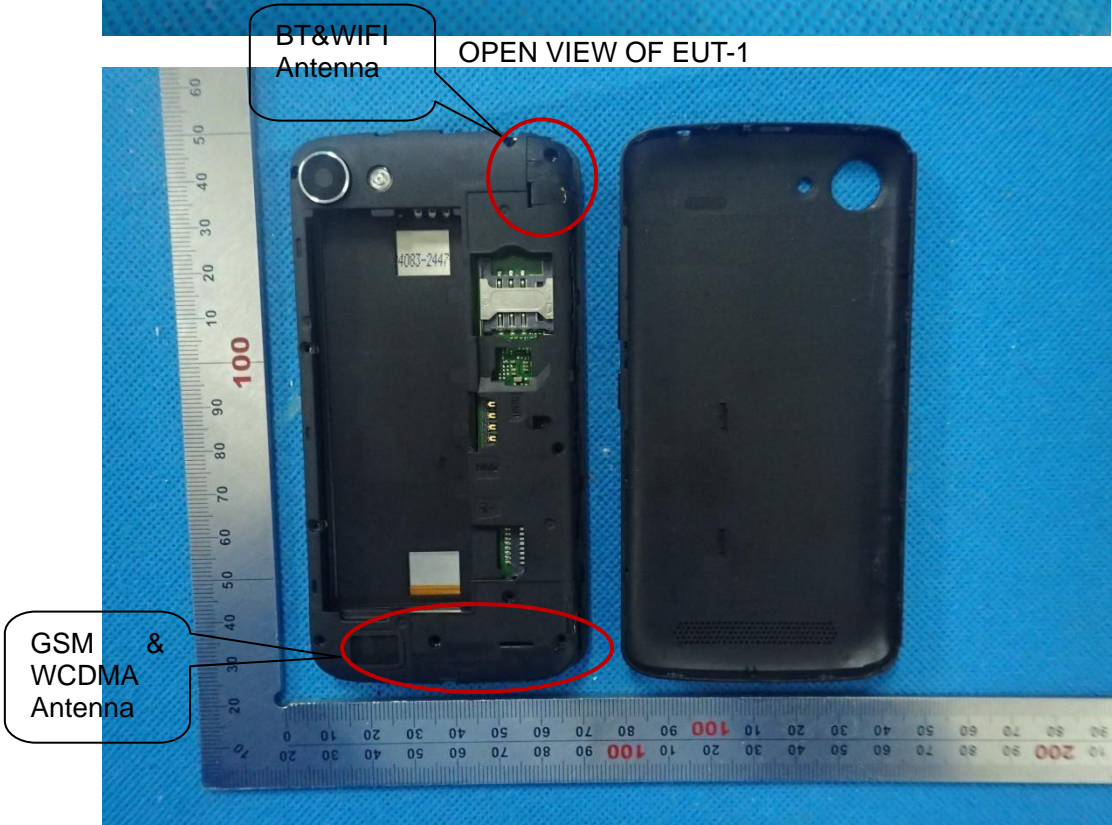
LEFT VIEW OF EUT



RIGHT VIEW OF EUT



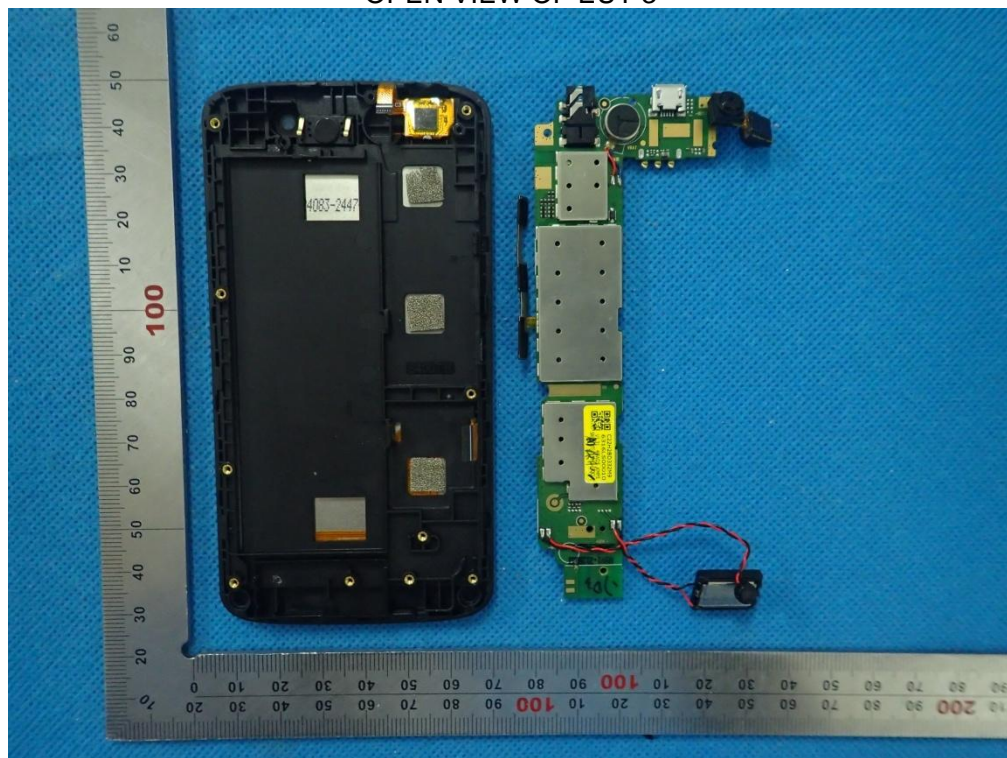
OPEN VIEW OF EUT-1



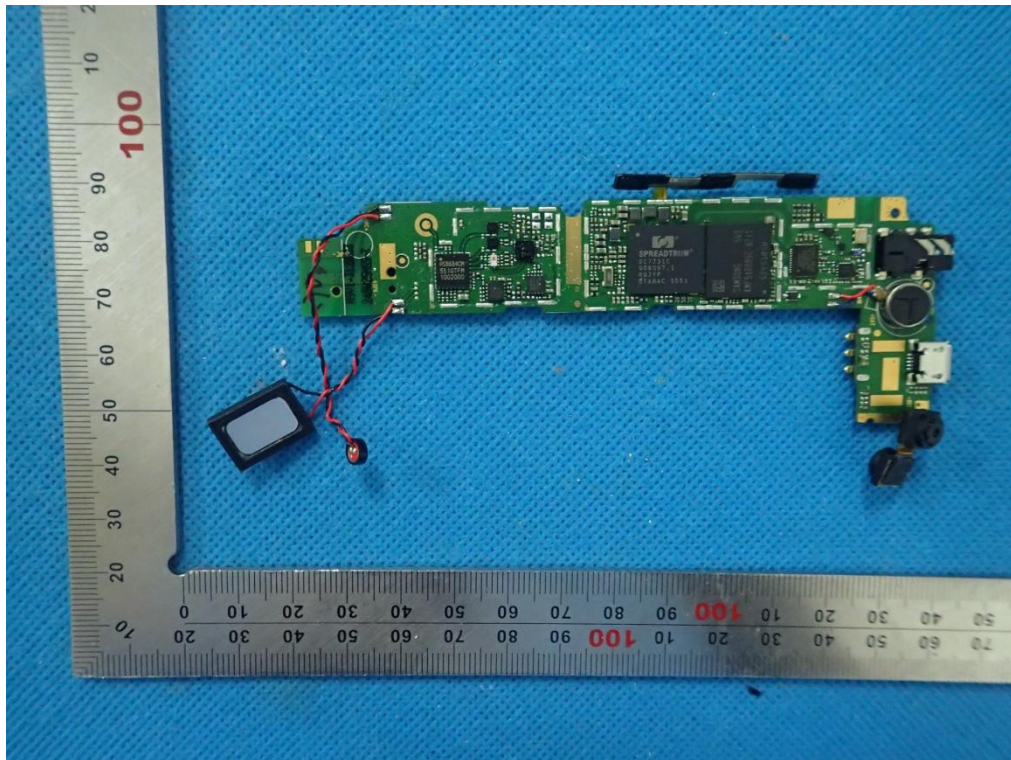
OPEN VIEW OF EUT-2



OPEN VIEW OF EUT-3



INTERNAL VIEW OF EUT-1



INTERNAL VIEW OF EUT-2

