
SAR Test Report

Report No.: AGC06426160403FH01

FCC ID : 2AH8VG31

APPLICATION PURPOSE : Original Equipment

PRODUCT DESIGNATION : Smart Phone

BRAND NAME : GELSI

MODEL NAME : G31

CLIENT : Vexcon Trading Corp

DATE OF ISSUE : Apr. 26,2016

STANDARD(S) : IEEE Std. 1528:2013
FCC 47CFR § 2.1093
IEEE/ANSI C95.1:1992

REPORT VERSION : V1.0

Attestation of Global Compliance(Shenzhen) Co., Ltd.

CAUTION:

This report shall not be reproduced except in full without the written permission of the test laboratory and shall not be quoted out of context.



Report Revise Record

Report Version	Revise Time	Issued Date	Valid Version	Notes
V1.0	/	Apr. 26,2016	Valid	Original Report

Test Report Certification

Applicant Name	Vexcon Trading Corp
Applicant Address	Edificio AFRA, Avenida Samuel Lewis. Calle 54. Ciudad de Panama
Manufacturer Name	UTCOT TECHNOLOGY CO., LIMITED
Manufacturer Address	C1105-1107,Tiley Central Plaza, No 3 Haide Road Nanshan District Shenzhen 518054
Product Designation	Smart Phone
Brand Name	GELSI
Model Name	G31
Different Description	N/A
EUT Voltage	DC3.7V by battery
Applicable Standard	IEEE Std. 1528:2013 FCC 47CFR § 2.1093 IEEE/ANSI C95.1:1992
Test Date	Apr. 04,2016 to Apr. 26,2016
Performed Location	Attestation of Global Compliance(Shenzhen) Co., Ltd.
	2 F, Building 2, No.1-No.4, Chaxi Sanwei Technical Industrial Park, Gushu, Xixiang Street, Bao'an District, Shenzhen, China
Report Template	AGCRT-US-3G3/SAR (2016-01-01)

Bobby Wang

Tested By

Bobby wang(Wang Zhicheng) Apr. 26,2016

Angela Li

Checked By

Angela Li(Li Jiao) Apr. 26,2016

Solger Zhang

Authorized By

Solger Zhang(Zhang Hongyi) Apr. 26,2016
Authorized Officer

TABLE OF CONTENTS

1. SUMMARY OF MAXIMUM SAR VALUE	5
2. GENERAL INFORMATION.....	6
2.1. EUT DESCRIPTION.....	6
3. SAR MEASUREMENT SYSTEM.....	8
3.1. THE DASY5 SYSTEM USED FOR PERFORMING COMPLIANCE TESTS CONSISTS OF FOLLOWING ITEMS	8
3.2. DASY5 E-FIELD PROBE.....	9
3.3. DATA ACQUISITION ELECTRONICS DESCRIPTION	9
3.4. ROBOT.....	10
3.5. LIGHT BEAM UNIT	10
3.6. DEVICE HOLDER.....	11
3.7. MEASUREMENT SERVER.....	11
3.8. PHANTOM.....	12
4. SAR MEASUREMENT PROCEDURE	13
4.1. SPECIFIC ABSORPTION RATE (SAR).....	13
4.2. SAR MEASUREMENT PROCEDURE	14
4.3. RF EXPOSURE CONDITIONS	16
5. TISSUE SIMULATING LIQUID	18
5.1. THE COMPOSITION OF THE TISSUE SIMULATING LIQUID.....	18
5.2. TISSUE DIELECTRIC PARAMETERS FOR HEAD AND BODY PHANTOMS	18
5.3. TISSUE CALIBRATION RESULT	19
6. SAR SYSTEM CHECK PROCEDURE	22
6.1. SAR SYSTEM CHECK PROCEDURES	22
6.2. SAR SYSTEM CHECK.....	23
7. EUT TEST POSITION.....	25
7.1. DEFINE TWO IMAGINARY LINES ON THE HANDSET.....	25
7.2. CHEEK POSITION	26
7.3. TILT POSITION.....	26
7.4. BODY WORN POSITION	27
8. SAR EXPOSURE LIMITS	28
9. TEST EQUIPMENT LIST	29
10. MEASUREMENT UNCERTAINTY	30
11. CONDUCTED POWER MEASUREMENT.....	33
12. TEST RESULTS.....	41
12.1. SAR TEST RESULTS SUMMARY.....	41
APPENDIX A. SAR SYSTEM CHECK DATA	54
APPENDIX B. SAR MEASUREMENT DATA.....	63
APPENDIX C. TEST SETUP PHOTOGRAPHS & EUT PHOTOGRAPHS.....	83
APPENDIX D. CALIBRATION DATA	83

1. SUMMARY OF MAXIMUM SAR VALUE

The maximum results of Specific Absorption Rate (SAR) found during testing for EUT are as follows:

Frequency Band	Highest Reported 1g-SAR(W/Kg)		SAR Test Limit (W/Kg)
	Head	Body-worn	
GSM 850	0.207	0.743	1.6
PCS 1900	1.193	0.909	
UMTS Band V	0.289	0.784	
UMTS Band II	1.086	1.288	
WIFI 2.4G	0.386	0.279	
Simultaneous Reported SAR	1.579		
SAR Test Result	PASS		

This device is compliance with Specific Absorption Rate (SAR) for general population/uncontrolled exposure limits (1.6W/Kg) specified in IEEE Std. 1528:2013; FCC 47CFR § 2.1093; IEEE/ANSI C95.1:1992 and the following specific FCC Test Procedures:

- KDB 447498 D01 General RF Exposure Guidance v06
- KDB 648474 D04 Handset SAR v01r03
- KDB 865664 D01 SAR Measurement 100MHz to 6GHz v01r04
- KDB 941225 D01 3G SAR Procedures v03r01
- KDB 941225 D06 Hotspot Mode v02r01
- KDB 248227 D01 802 11 Wi-Fi SAR v02r02

2. GENERAL INFORMATION

2.1. EUT Description

General Information	
Product Designation	Smart Phone
Test Model	G31
Hardware Version	C22H_2BD3_V1.0B
Software Version	7731C_C22_3204_G31_160412
Device Category	Portable
RF Exposure Environment	Uncontrolled
Antenna Type	Internal
GSM and GPRS	
Support Band	<input checked="" type="checkbox"/> GSM 850 <input checked="" type="checkbox"/> PCS 1900 <input checked="" type="checkbox"/> GSM 900 <input checked="" type="checkbox"/> DCS 1800
GPRS Type	Class B
GPRS Class	Class 12(1Tx+4Rx, 2Tx+3Rx, 3Tx+2Rx, 4Tx+1Rx)
TX Frequency Range	GSM 850 : 820-850MHz;; PCS 1900: 1850-1910MHz;
RX Frequency Range	GSM 850 : 869~894MHz; PCS 1900: 1930~1990MHz
Release Version	R99
Type of modulation	GMSK for GSM/GPRS;
Antenna Gain	-1.0dBi
Max. Average Power (Max. Peak Power)	GSM850: 31.27dBm(32.12dBm) ;PCS1900: 28.39dBm(29.16dBm)
WCDMA	
Support Band	<input checked="" type="checkbox"/> UMTS FDD Band II <input checked="" type="checkbox"/> UMTS FDD Band V <input type="checkbox"/> UMTS FDD Band I <input type="checkbox"/> UMTS FDD Band VIII
HS Type	HSPA(HSUPA/HSDPA)
TX Frequency Range	FDD Band II: 1850-1910MHz; FDD Band V: 820-850MHz
RX Frequency Range	FDD Band II: 1930-1990MHz; FDD Band V: 869-894MHz
Release Version	Rel-6
Type of modulation	HSDPA:QPSK/16QAM; HSUPA:BPSK; WCDMA:QPSK
Antenna Gain	-1.0dBi
Max. Average Power (Max. Peak Power)	Band II: 21.59dBm (23.53dBm); Band V: 21.29dBm (23.26dBm)

EUT Description(Continue)

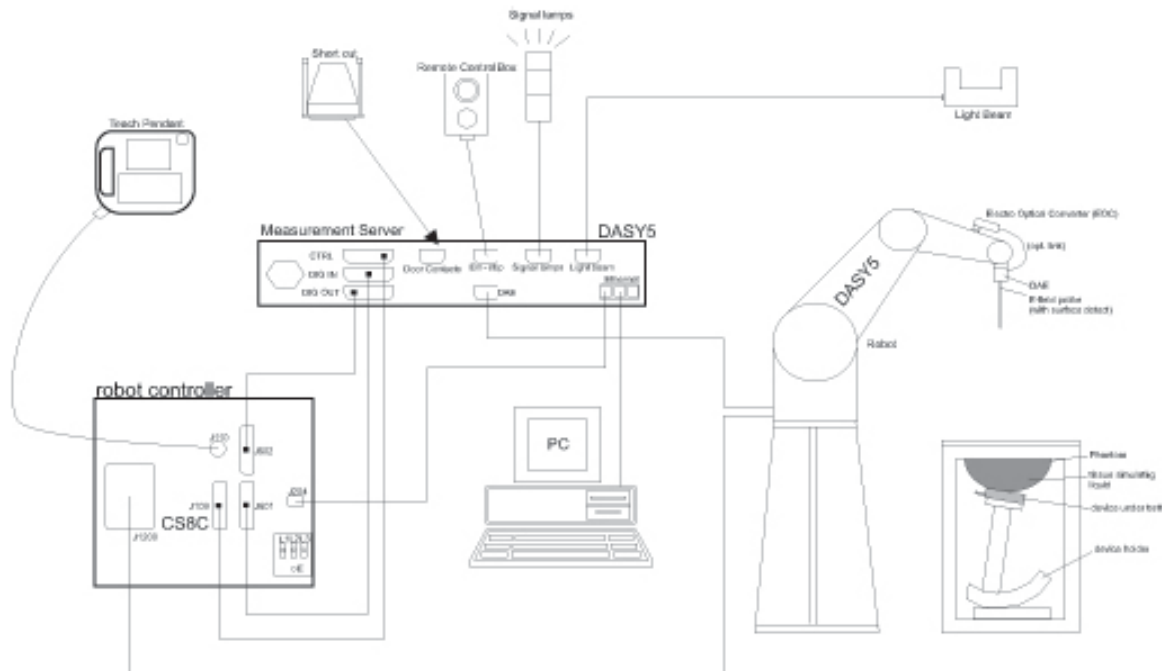
Bluetooth	
Bluetooth Version	<input type="checkbox"/> V2.0 <input type="checkbox"/> V2.1 <input type="checkbox"/> V2.1+EDR <input checked="" type="checkbox"/> V3.0 <input type="checkbox"/> V3.0+HS <input type="checkbox"/> V4.0
Operation Frequency	2402~2480MHz
Type of modulation	<input checked="" type="checkbox"/> GFSK <input checked="" type="checkbox"/> π/4-DQPSK <input checked="" type="checkbox"/> 8-DPSK
Avg. Burst Power	2.38dBm
Antenna Gain	0.6dBi
WIFI	
WIFI Specification	<input type="checkbox"/> 802.11a <input checked="" type="checkbox"/> 802.11b <input checked="" type="checkbox"/> 802.11g <input checked="" type="checkbox"/> 802.11n(20) <input type="checkbox"/> 802.11n(40)
Operation Frequency	2412~2462MHz
Avg. Burst Power	11b:11.06dBm,11g:9.87dBm,11n(20):9.38dBm,
Antenna Gain	0.6dBi
Accessories	
Battery	Brand name: GELSI Model No. : G31 Voltage and Capacitance: 3.7 V & 1500mAh
Adapter	Brand name: GELSI Model No. : G31 Input: AC 100-240V, 50/60Hz, 0.15A Output: DC 5V, 700mA
Earphone	Brand name: N/A Model No. : N/A

Note:1.CMU200 can measure the average power and Peak power at the same time
2.The sample used for testing is end product.

Product	Type
	<input checked="" type="checkbox"/> Production unit <input type="checkbox"/> Identical Prototype

3. SAR MEASUREMENT SYSTEM

3.1. The DASY5 system used for performing compliance tests consists of following items




- A standard high precision 6-axis robot with controller, teach pendant and software.
- Data acquisition electronics (DAE) which attached to the robot arm extension. The DAE consist of a highly sensitive electrometer-grade preamplifier with auto-zeroing, a channel and gain-switching multiplexer, a fast 16 bit AD-converter and a command decoder with a control logic unit. Transmission to the measurement server is accomplished through an optical downlink for data and status information, as well as an optical uplink for commands and the clock
- A dosimetric probe equipped with an optical surface detector system.
- The Electro-optical converter (EOC) performs the conversion from optical to electrical signals for the digital Communication to the DAE. To use optical surface detection, a special version of the EOC is required. The EOC signal is transmitted to the measurement server.
- A Light Beam used is for probe alignment. This improves the (absolute) accuracy of the probe positioning.
- A computer running WinXP and the DASY5 software.
- Remote control and teach pendant as well as additional circuitry for robot safety such as warning lamps, etc.
- Phantoms, device holders and other accessories according to the targeted measurement.

3.2. DASY5 E-Field Probe

The SAR measurement is conducted with the dosimetric probe manufactured by SPEAG. The probe is specially designed and calibrated for use in liquid with high permittivity. The dosimetric probe has special calibration in liquid at different frequency. SPEAG conducts the probe calibration in compliance with international and national standards (e.g. IEEE 1528 and relevant KDB files.) The calibration data are in Appendix D.

Isotropic E-Field Probe Specification


Model	ES3DV3	
Manufacture	SPEAG	
frequency	0.15GHz-3 GHz Linearity:±0.2dB(150 MHz-3 GHz)	
Dynamic Range	0.01W/Kg-100W/Kg Linearity:±0.2dB	
Dimensions	Overall length:337mm Tip diameter:4mm Typical distance from probe tip to dipole centers:2mm	
Application	High precision dosimetric measurements in any exposure scenario (e.g., very strong gradient fields). Only probe which enables compliance testing for frequencies up to 3 GHz with precision of better 30%.	

3.3. Data Acquisition Electronics description

The data acquisition electronics (DAE) consist if a highly sensitive electrometer-grade preamplifier with auto-zeroing, a channel and gain-switching multiplexer, a fast 16 bit AD-converte and a command decoder with a control logic unit. Transmission to the measurement sever is accomplished through an optical downlink fir data and status information, as well as an optical uplink for commands and the clock.

The mechanical probe mounting device includes two different sensor systems for frontal and sideways probe contacts. They are used for mechanical surface detection and probe collision detection.

DAE4

Input Impedance	200MOhm	
The Inputs	Symmetrical and floating	
Common mode rejection	above 80 dB	

3.4. Robot

The DASY system uses the high precision robots (DASY5:TX60) type from Stäubli SA (France). For the 6-axis controller system, the robot controller version from is used.

The XL robot series have many features that are important for our application:

- ☐ High precision (repeatability 0.02 mm)
- ☐ High reliability (industrial design)
- ☐ Jerk-free straight movements
- ☐ Low ELF interference (the closed metallic construction shields against motor control fields)
- ☐ 6-axis controller



3.5. Light Beam Unit

The light beam switch allows automatic “tooling” of the probe. During the process, the actual position of the probe tip with respect to the robot arm is measured, as well as the probe length and the horizontal probe offset. The software then corrects all movements, such that the robot coordinates are valid for the probe tip.

The repeatability of this process is better than 0.1 mm. If a position has been taught with an aligned probe.1 mm, even if the other probe has different dimensions. During probe rotations, the probe tip will keep its actual position. e, the same position will be reached with another aligned probe within 0



3.6. Device Holder

The DASY device holder is designed to cope with different positions given in the standard. It has two scales for the device rotation (with respect to the body axis) and the device inclination (with respect to the line between the ear reference points). The rotation center for both scales is the ear reference point (EPR).

Thus the device needs no repositioning when changing the angles.

The DASY device holder has been made out of low-loss POM material having the following dielectric parameters: relative permittivity $\epsilon=3$ and loss tangent $\delta = 0.02$. The amount of dielectric material has been reduced in the closest vicinity of the device, since measurements have suggested that the influence of the clamp on the test results could thus be lowered.



3.7. Measurement Server

The measurement server is based on a PC/104 CPU board with CPU (DASY5: 400 MHz, Intel Celeron), chip-disk (DASY5: 128MB), RAM (DASY5: 128MB). The necessary circuits for communication with the DAE electronic box, as well as the 16 bit AD converter system for optical detection and digital I/O interface are contained on the DAYS I/O board, which is directly connected to the PC/104 bus of the CPU board.

The measurement server performs all the real-time data evaluation for field measurements and surface detection, controls robot movements and handles safety operations.



3.8. PHANTOM

SAM Twin Phantom

The SAM twin phantom is a fiberglass shell phantom with 2mm shell thickness (except the ear region where shell thickness increases to 6mm). It has three measurement areas:

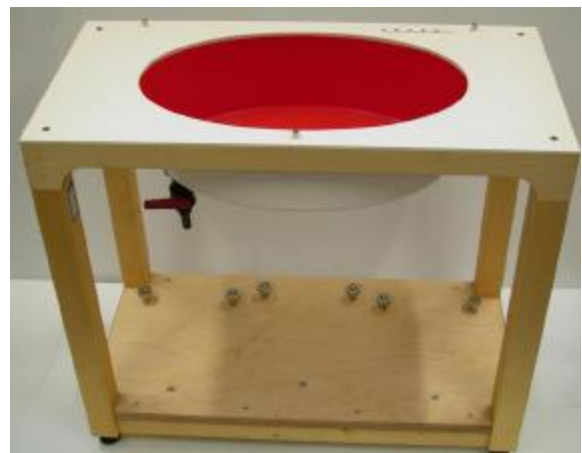
- ☐ Left head
- ☐ Right head
- ☐ Flat phantom



The bottom plate contains three pair of bolts for locking the device holder. The device holder positions are adjusted to the standard measurement positions in the three sections. A white cover is provided to tap the phantom during off-periods to prevent water evaporation and changes in the liquid parameters. On the phantom top, three reference markers are provided to identify the phantom position with respect to the robot.

ELI4 Phantom

- ☐ Flat phantom a fiberglass shell flat phantom with 2mm \pm 0.2 mm shell thickness. It has only one measurement area for Flat phantom



4. SAR MEASUREMENT PROCEDURE

4.1. Specific Absorption Rate (SAR)

SAR is related to the rate at which energy is absorbed per unit mass in object exposed to a radio field. The SAR distribution in a biological body is complicated and is usually carried out by experimental techniques or numerical modeling. The standard recommends limits for two tiers of groups, occupational/controlled and occupational/uncontrolled, based on a person's awareness and ability to exercise control over his or her exposure. In general, occupational/controlled exposure limits are higher than the limits for general population/uncontrolled.

The SAR definition is the time derivative (rate) of the incremental energy (dW) absorbed by (dissipated in) an incremental mass (dm) contained in a volume element (dv) of given mass density (ρ). The equation description is as below:

$$SAR = \frac{d}{dt} \left(\frac{dW}{dm} \right) = \frac{d}{dt} \left(\frac{dW}{\rho dV} \right)$$

SAR is expressed in units of Watts per kilogram (W/Kg)

SAR can be obtained using either of the following equations:

$$SAR = \frac{\sigma E^2}{\rho}$$

$$SAR = c_h \left. \frac{dT}{dt} \right|_{t=0}$$

Where

SAR	is the specific absorption rate in watts per kilogram;
E	is the r.m.s. value of the electric field strength in the tissue in volts per meter;
σ	is the conductivity of the tissue in siemens per metre;
ρ	is the density of the tissue in kilograms per cubic metre;
c_h	is the heat capacity of the tissue in joules per kilogram and Kelvin;

$\left. \frac{dT}{dt} \right|_{t=0}$ is the initial time derivative of temperature in the tissue in kelvins per second

4.2. SAR Measurement Procedure

Step 1: Power Reference Measurement

The Power Reference Measurement and Power Drift Measurement are for monitoring the power drift of the device under test in the batch process. The minimum distance of probe sensors to surface is 2.7mm This distance cannot be smaller than the distance os sensor calibration points to probe tip as `defined in the probe properties,

Step 2: Area Scan

The Area Scan is used as a fast scan in two dimensions to find the area of high field values, before doing a fine measurement around the hot spot. The sophisticated interpolation routines implemented in DASY software can find the maximum locations even in relatively coarse grids. When an Area Scan has measured all reachable points, it computes the field maximal found in the scanned area, within a range of the global maximum. The range (in db) is specified in the standards for compliance testing. For example, a 2db range is required in IEEE Standard 1528 and IEC62209 standards, whereby 3db is a requirement when compliance is assessed in accordance with the ARIB standard (Japan) If one Zoom Scan follows the Area Scan, then only the absolute maximum will be taken as reference. For cases where multiple maximum are detected, the number of Zoom Scan has to be increased accordingly.

Area Scan Parameters extracted from KDB 865664 D01 SAR Measurement 100MHz to 6GHz

	$\leq 3 \text{ GHz}$	$> 3 \text{ GHz}$
Maximum distance from closest measurement point (geometric center of probe sensors) to phantom surface	$5 \pm 1 \text{ mm}$	$\frac{1}{2} \cdot \delta \cdot \ln(2) \pm 0.5 \text{ mm}$
Maximum probe angle from probe axis to phantom surface normal at the measurement location	$30^\circ \pm 1^\circ$	$20^\circ \pm 1^\circ$
Maximum area scan spatial resolution: $\Delta x_{\text{Area}}, \Delta y_{\text{Area}}$	$\leq 2 \text{ GHz}: \leq 15 \text{ mm}$ $2 - 3 \text{ GHz}: \leq 12 \text{ mm}$	$3 - 4 \text{ GHz}: \leq 12 \text{ mm}$ $4 - 6 \text{ GHz}: \leq 10 \text{ mm}$
	When the x or y dimension of the test device, in the measurement plane orientation, is smaller than the above, the measurement resolution must be \leq the corresponding x or y dimension of the test device with at least one measurement point on the test device.	

Step 3: Zoom Scan

Zoom Scan are used to assess the peak spatial SAR value within a cubic average volume containing 1g abd 10g of simulated tissue. The Zoom Scan measures points(refer to table below) within a cube whose base faces are centered on the maxima found in a preceding area scan job within the same procedure. When the measurement is done, the Zoom Scan evaluates the averaged SAR for 1g and 10g and displays these values next to the job's label.

Zoom Scan Parameters extracted from KDB865664 d01 SAR Measurement 100MHz to 6GHz

Maximum zoom scan spatial resolution: $\Delta x_{\text{Zoom}}, \Delta y_{\text{Zoom}}$			$\leq 2 \text{ GHz}: \leq 8 \text{ mm}$ $2 - 3 \text{ GHz}: \leq 5 \text{ mm}^*$	$3 - 4 \text{ GHz}: \leq 5 \text{ mm}^*$ $4 - 6 \text{ GHz}: \leq 4 \text{ mm}^*$
Maximum zoom scan spatial resolution, normal to phantom surface	uniform grid: $\Delta z_{\text{Zoom}}(n)$		$\leq 5 \text{ mm}$	$3 - 4 \text{ GHz}: \leq 4 \text{ mm}$ $4 - 5 \text{ GHz}: \leq 3 \text{ mm}$ $5 - 6 \text{ GHz}: \leq 2 \text{ mm}$
	graded grid	$\Delta z_{\text{Zoom}}(1)$: between 1 st two points closest to phantom surface	$\leq 4 \text{ mm}$	$3 - 4 \text{ GHz}: \leq 3 \text{ mm}$ $4 - 5 \text{ GHz}: \leq 2.5 \text{ mm}$ $5 - 6 \text{ GHz}: \leq 2 \text{ mm}$
		$\Delta z_{\text{Zoom}}(n>1)$: between subsequent points	$\leq 1.5 \cdot \Delta z_{\text{Zoom}}(n-1)$	
Minimum zoom scan volume	x, y, z		$\geq 30 \text{ mm}$	$3 - 4 \text{ GHz}: \geq 28 \text{ mm}$ $4 - 5 \text{ GHz}: \geq 25 \text{ mm}$ $5 - 6 \text{ GHz}: \geq 22 \text{ mm}$
Note: δ is the penetration depth of a plane-wave at normal incidence to the tissue medium; see draft standard IEEE P1528-2011 for details.				
* When zoom scan is required and the <u>reported</u> SAR from the <i>area scan based 1-g SAR estimation</i> procedures of KDB 447498 is $\leq 1.4 \text{ W/kg}$, $\leq 8 \text{ mm}$, $\leq 7 \text{ mm}$ and $\leq 5 \text{ mm}$ zoom scan resolution may be applied, respectively, for 2 GHz to 3 GHz, 3 GHz to 4 GHz and 4 GHz to 6 GHz.				

Step 4: Power Drift Measurement

The Power Drift Measurement measures the field at the same location as the most recent power reference measurement within the same procedure, and with the same settings. The Power Drift Measurement gives the field difference in dB from the reading conducted within the same settings. This allows a user to monitor the power drift of the device under test within a batch process. The measurement procedure is the same as Step 1.

4.3. RF Exposure Conditions

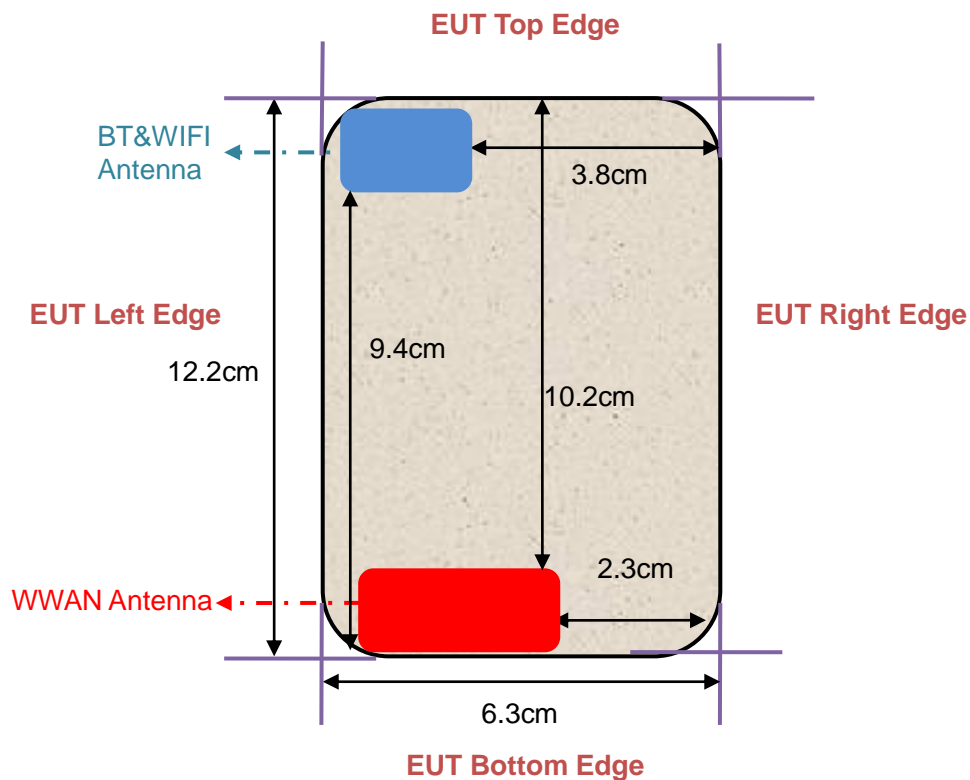
Test Configuration and setting:

The EUT is a model of GSM Portable Mobile Station (MS). It supports GSM/GPRS, WCDMA/HSPA, BT, WIFI, and support hotspot mode.

For WWAN SAR testing, the device was controlled by using a base station emulator. Communication between the device and the emulator were established by air link. The distance between the EUT and the antenna is larger than 50cm, and the output power radiated from the emulator antenna is at least 30db smaller than the output power of EUT.

For WLAN testing, the EUT is configured with the WLAN continuous TX tool through engineering command.

Antenna Location: (the front view)



For WWAN mode:

Test Configurations	Antenna to edges/surface	SAR required	Note
Head			
Left Touch		Yes	
Left Tilt		Yes	
Right Touch		Yes	
Right Tilt		Yes	
Body			
Back	<25mm	Yes	
Front	<25mm	Yes	
Hotspot			
Back	<25mm	Yes	
Front	<25mm	Yes	
Edge 1 (Top)	102	No	SAR is not required for the distance between the antenna and the edge is >25mm as per KDB 941225 D06 Hotspot SAR
Edge 2 (Right)	23	No	SAR is not required for the distance between the antenna and the edge is >25mm as per KDB 941225 D06 Hotspot SAR
Edge 3 (Bottom)	2	Yes	
Edge 4 (Left)	2	Yes	

For WLAN mode:

Test Configurations	Antenna to edges/surface	SAR required	Note
Head			
Left Touch		Yes	
Left Tilt		Yes	
Right Touch		Yes	
Right Tilt		Yes	
Body			
Back	<25mm	Yes	
Front	<25mm	Yes	
Hotspot			
Back	<25mm	Yes	
Front	<25mm	Yes	
Edge 1 (Top)	2	Yes	
Edge 2 (Right)	38	No	SAR is not required for the distance between the antenna and the edge is >25mm as per KDB 941225 D06 Hotspot SAR
Edge 3 (Bottom)	94	No	SAR is not required for the distance between the antenna and the edge is >25mm as per KDB 941225 D06 Hotspot SAR
Edge 4 (Left)	2	Yes	

5. TISSUE SIMULATING LIQUID

For SAR measurement of the field distribution inside the phantom, the phantom must be filled with homogeneous tissue simulating liquid to a depth of at least 15cm. For head SAR testing the liquid height from the ear reference point (ERP) of the phantom to the liquid top surface is larger than 15cm For body SAR testing, the liquid height from the center of the flat phantom to the liquid top surface is larger than 15cm. The nominal dielectric values of the tissue simulating liquids in the phantom and the tolerance of 5% are listed in 5.2

5.1. The composition of the tissue simulating liquid

Ingredient (% Weight) Frequency (MHz)	Water	NaCl	Sugar	HEC	Bactericide	DGBE	1,2 Propanediol	Triton X-100
835 Head	40.45	1.45	57	1	0.1	0.0	0.0	0.0
835 Body	54.00	1	0.0	0.0	0.0	15	0.0	30
1900 Head	54.9	0.18	0.0	0.0	0.0	44.92	0.0	0.0
1900 Body	70	1	0.0	0.0	0.0	9	0.0	20
2450 Head	71.88	0.16	0.0	0.0	0.0	7.99	0.0	19.97
2450 Body	70	1	0.0	0.0	0.0	9	0.0	20

5.2. Tissue Dielectric Parameters for Head and Body Phantoms

The head tissue dielectric parameters recommended by the IEEE 1528 have been incorporated in the following table. These head parameters are derived from planar layer models simulating the highest expected SAR for the dielectric properties and tissue thickness variations in a human head. Other head and body tissue parameters that have not been specified in IEEE 1528 are derived from the tissue dielectric parameters computed from the 4-Cole-Cole equations described in Reference [12] and extrapolated according to the head parameters specified in IEEE 1528.

Target Frequency (MHz)	head		body	
	ϵ_r	σ (S/m)	ϵ_r	σ (S/m)
300	45.3	0.87	58.2	0.92
450	43.5	0.87	56.7	0.94
835	41.5	0.90	55.2	0.97
900	41.5	0.97	55.0	1.05
915	41.5	1.01	55.0	1.06
1450	40.5	1.20	54.0	1.30
1610	40.3	1.29	53.8	1.40
1800 – 2000	40.0	1.40	53.3	1.52
2450	39.2	1.80	52.7	1.95
3000	38.5	2.40	52.0	2.73
5800	35.3	5.27	48.2	6.00

(ϵ_r = relative permittivity, σ = conductivity and ρ = 1000 kg/m³)

5.3. Tissue Calibration Result

The dielectric parameters of the liquids were verified prior to the SAR evaluation using DASY5 Dielectric Probe Kit and R&S Network Analyzer ZVL6.

Tissue Stimulant Measurement for 835MHz					
Head	Fr. (MHz)	Dielectric Parameters ($\pm 5\%$)		Tissue Temp [°C]	Test time
		ϵ_r 41.5 (39.425-43.575)	δ [s/m] 0.90(0.855-0.945)		
	824.2	42.86	0.87	21.2	Apr. 25,2016
	826.4	42.45	0.87		
	835	42.10	0.89		
	836.6	41.98	0.90		
	846.6	41.79	0.90		
	848.8	41.63	0.90		
Body	Fr. (MHz)	Dielectric Parameters ($\pm 5\%$)		Tissue Temp [°C]	Test time
		ϵ_r 55.20(52.44-57-96)	δ [s/m]0.97(0.9215-1.0185)		
	824.2	56.70	0.94	21.9	Apr. 26,2016
	826.4	56.11	0.95		
	835	55.99	0.95		
	836.6	55.41	0.98		
	846.6	55.07	0.98		
	848.8	54.69	0.98		
Body	Fr. (MHz)	Dielectric Parameters ($\pm 5\%$)		Tissue Temp [°C]	Test time
		ϵ_r 55.20(52.44-57-96)	δ [s/m]0.97(0.9215-1.0185)		
	824.2	56.89	0.94	22.0	Apr. 04,2016
	826.4	55.97	0.94		
	835	55.45	0.95		
	836.6	55.13	0.96		
	846.6	54.88	0.97		
	848.8	54.62	0.98		

Tissue Stimulant Measurement for 1900MHz					
Head	Fr. (MHz)	Dielectric Parameters ($\pm 5\%$)		Tissue Temp [°C]	Test time
		$\epsilon_r 40.00(38.00-42.00)$	$\delta [s/m] 1.40(1.33-1.47)$		
	1850.2	41.77	1.35	21.7	Apr. 23,2016
	1852.4	41.26	1.37		
	1880	41.07	1.37		
	1900	40.83	1.40		
	1907.6	40.24	1.41		
	1909.8	40.00	1.44		
Body	Fr. (MHz)	Dielectric Parameters ($\pm 5\%$)		Tissue Temp [°C]	Test time
		$\epsilon_r 53.30(50.635-55.965)$	$\delta [s/m] 1.52(1.444-1.596)$		
	1850.2	53.99	1.46	21.9	Apr. 24,2016
	1852.4	53.81	1.47		
	1880	53.62	1.51		
	1900	53.11	1.53		
	1907.6	52.95	1.54		
	1909.8	52.08	1.56		
Body	Fr. (MHz)	Dielectric Parameters ($\pm 5\%$)		Tissue Temp [°C]	Test time
		$\epsilon_r 53.30(50.635-55.965)$	$\delta [s/m] 1.52(1.444-1.596)$		
	1850.2	53.67	1.46	22.3	Apr. 14,2016
	1852.4	53.13	1.48		
	1880	52.90	1.49		
	1900	52.75	1.53		
	1907.6	52.00	1.54		
	1909.8	51.76	1.57		

Tissue Stimulant Measurement for 2450MHz					
Head	Fr. (MHz)	Dielectric Parameters ($\pm 5\%$)		Tissue Temp [°C]	Test time
		$\epsilon_r 39.2(37.24-41.16)$	$\delta [s/m] 1.80(1.71-1.89)$		
	2412	40.74	1.76	21.4	Apr. 26, 2016
	2437	39.86	1.76		
	2450	39.11	1.79		
	2462	38.98	1.84		
Body	Fr. (MHz)	Dielectric Parameters ($\pm 5\%$)		Tissue Temp [°C]	Test time
		$\epsilon_r 52.7(50.065-55.335)$	$\delta [s/m] 1.95(1.8525-2.0475)$		
	2412	53.63	1.89	21.1	Apr. 26, 2016
	2437	53.10	1.90		
	2450	52.66	1.93		
	2462	52.07	1.97		
Body	Fr. (MHz)	Dielectric Parameters ($\pm 5\%$)		Tissue Temp [°C]	Test time
		$\epsilon_r 52.7(50.065-55.335)$	$\delta [s/m] 1.95(1.8525-2.0475)$		
	2412	53.64	1.88	22.0	Apr. 09, 2016
	2437	52.18	1.91		
	2450	52.00	1.93		
	2462	51.64	1.94		

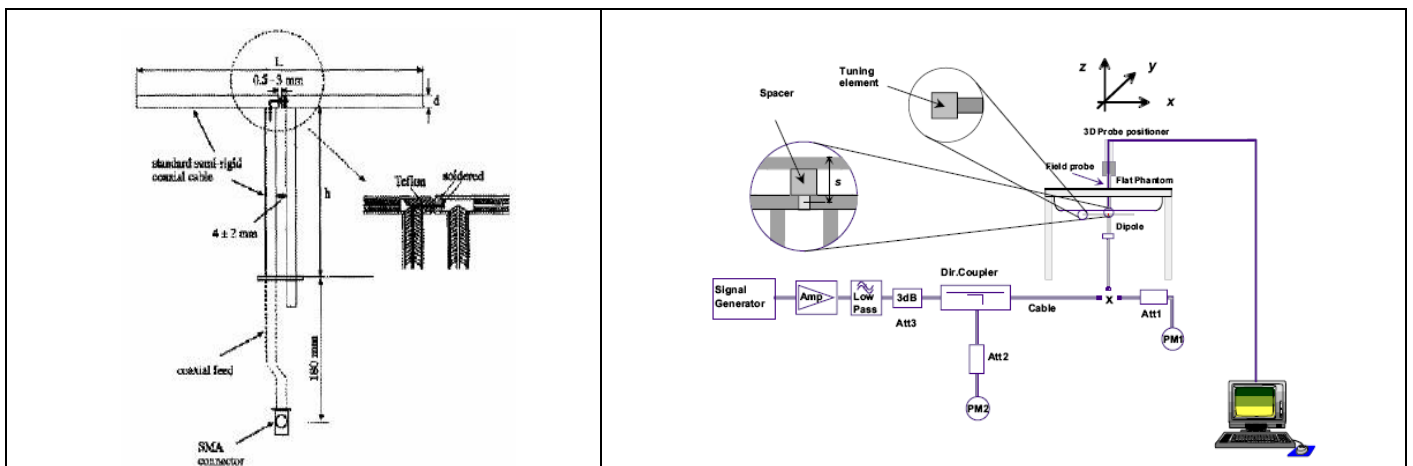
6. SAR SYSTEM CHECK PROCEDURE

6.1. SAR System Check Procedures

SAR system check is required to confirm measurement accuracy, according to the tissue dielectric media, probe calibration points and other system operating parameters required for measuring the SAR of a test device. The system verification must be performed for each frequency band and within the valid range of each probe calibration point required for testing the device. The same SAR probe(s) and tissue-equivalent media combinations used with each specific SAR system for system verification must be used for device testing. When multiple probe calibration points are required to cover substantially large transmission bands, independent system verifications are required for each probe calibration point. A system verification must be performed before each series of SAR measurements using the same probe calibration point and tissue-equivalent medium. Additional system verification should be considered according to the conditions of the tissue-equivalent medium and measured tissue dielectric parameters, typically every three to four days when the liquid parameters are remeasured or sooner when marginal liquid parameters are used at the beginning of a series of measurements.

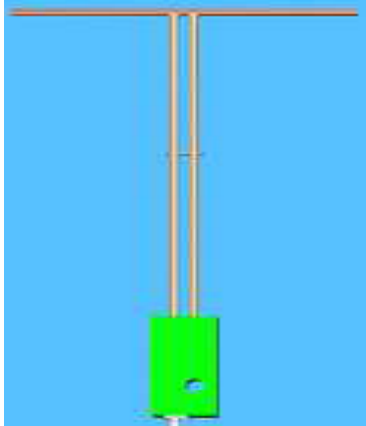
Each DASY system is equipped with one or more system check kits. These units, together with the predefined measurement procedures within the DASY software, enable the user to conduct the system check and system validation. System kit includes a dipole, and dipole device holder.

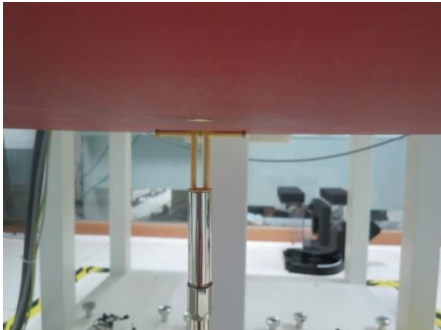
The system check verifies that the system operates within its specifications. It's performed daily or before every SAR measurement. The system check uses normal SAR measurement in the flat section of the phantom with a matched dipole at a specified distance. The system check setup is shown as below.



6.2. SAR System Check

6.2.1. Dipoles

	<p>The dipoles used is based on the IEEE-1528 standard, and is complied with mechanical and electrical specifications in line with the requirements of IEEE. the table below provides details for the mechanical and electrical Specifications for the dipoles.</p>
---	---

	<p>The dipoles used is based on the IEEE-1528 standard, and is complied with mechanical and electrical specifications in line with the requirements of IEEE. the table below provides details for the mechanical and electrical Specifications for the dipoles.</p>
--	---

Frequency	L (mm)	h (mm)	d (mm)
835MHz	161.0	89.8	3.6
1900MHz	68	39.5	3.6
2450MHz	51.5	30.4	3.6

6.2.2. System Check Result

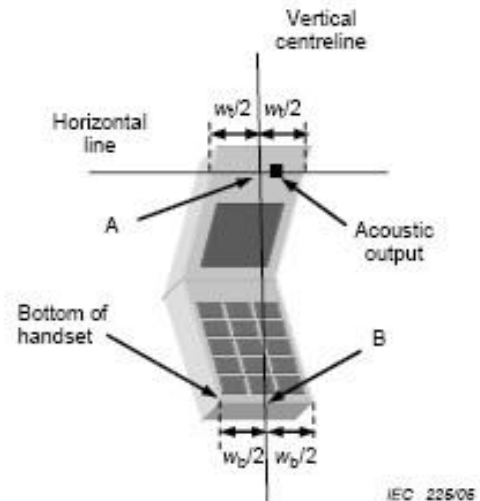
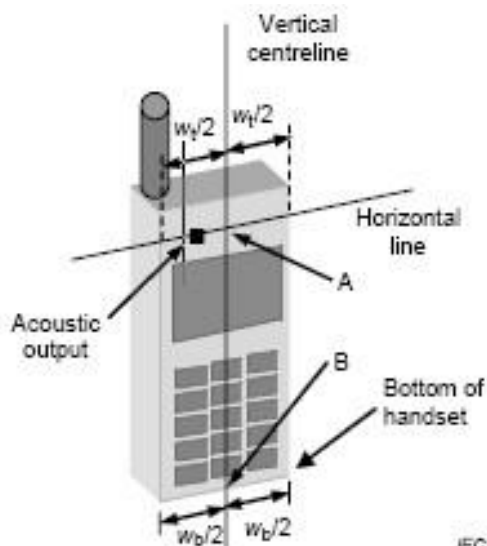
System Performance Check at 835MHz & 1900MHz & 2450MHz for Head								
Validation Kit: SN 30/14 DIP 0G835-332 & SN 46/11DIP 1G900-187 & D2450V2-SN:968								
Frequency [MHz]	Target Value(W/Kg)		Reference Result ($\pm 10\%$)		Tested Value(W/Kg)		Tissue Temp. [°C]	Test time
	1g	10g	1g	10g	1g	10g		
835	9.63	6.15	8.667-10.593	5.535-6.765	10.112	6.451	22.1	Apr. 25,2016
1900	39.65	20.24	35.685-43.615	18.216-22.264	38.988	20.921	21.0	Apr. 23,2016
2450	53.8	25.4	48.42-59.18	22.86-27.94	52.301	23.932	22.2	Apr. 26,2016
System Performance Check at 835 MHz & 1900MHz & 2450MHz for Body								
Frequency [MHz]	Target Value(W/Kg)		Reference Result ($\pm 10\%$)		Tested Value(W/Kg)		Tissue Temp. [°C]	Test time
	1g	10g	1g	10g	1g	10g		
835	9.93	6.35	8.937-10.923	5.715-6.985	10.318	6.577	22.0	Apr. 26,2016
1900	40.74	21.43	36.666-44.814	19.287-23.573	39.622	21.238	22.3	Apr. 24,2016
2450	51.7	24.3	46.53-56.87	21.87-26.73	51.351	23.298	22.0	Apr. 26,2016
835	9.93	6.35	8.937-10.923	5.715-6.985	10.223	6.561	22.0	Apr. 04,2016
1900	40.74	21.43	36.666-44.814	19.287-23.573	38.0.37	20.921	22.3	Apr. 14,2016
2450	51.7	24.3	46.53-56.87	21.87-26.73	54.045	24.724	22.0	Apr. 09,2016

7. EUT TEST POSITION

This EUT was tested in **Right Cheek, Right Tilted, Left Cheek, Left Tilted, Body back and Body front and 4 edges.**

7.1. Define Two Imaginary Lines on the Handset

- (1) The vertical centerline passes through two points on the front side of the handset the midpoint of the width w_t of the handset at the level of the acoustic output, and the midpoint of the width w_b of the handset.
- (2) The horizontal line is perpendicular to the vertical centerline and passes through the center of the acoustic output. The horizontal line is also tangential to the face of the handset at point A.
- (3) The two lines intersect at point A. Note that for many handsets, point A coincides with the center of the acoustic output; however, the acoustic output may be located elsewhere on the horizontal line. Also note that the vertical centerline is not necessarily to the front face of the handset, especially for clamshell handsets, handsets with flip covers, and other irregularly shaped handsets.



7.2. Cheek Position

- (1) To position the device with the vertical center line of the body of the device and the horizontal line crossing the center piece in a plane parallel to the sagittal plane of the phantom. While maintaining the device in this plane, align the vertical center line with the reference plane containing the ear and mouth reference point (M: Mouth, RE: Right Ear, and LE: Left Ear) and align the center of the ear piece with the line RE-LE.
- (2) To move the device towards the phantom with the ear piece aligned with the the line LE-RE until the phone touched the ear. While maintaining the device in the reference plane and maintaining the phone contact with ear, move the bottom of the phone until any point on the front side is in contact with the cheek of the phantom or until contact with the ear is lost



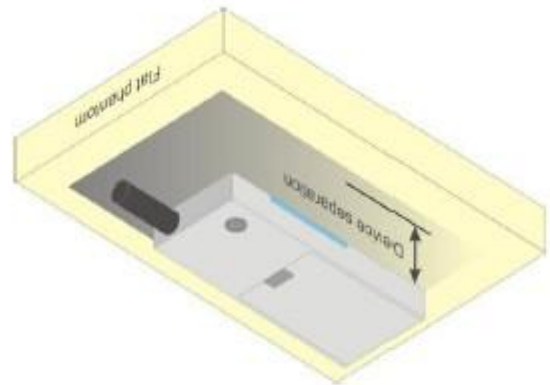
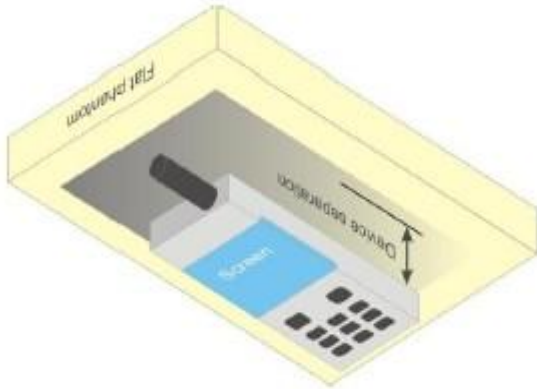
7.3. Tilt Position

- (1) To position the device in the “cheek” position described above.
- (2) While maintaining the device in the reference plane described above and pivoting against the ear, moves it outward away from the mouth by an angle of 15 degrees or until with the ear is lost.



7.4. Body Worn Position

- (1) To position the EUT parallel to the phantom surface.
- (2) To adjust the EUT parallel to the flat phantom.
- (3) To adjust the distance between the EUT surface and the flat phantom to **5mm**.



8. SAR EXPOSURE LIMITS

SAR assessments have been made in line with the requirements of IEEE-1528, and comply with ANSI/IEEE C95.1-1992 “Uncontrolled Environments” limits. These limits apply to a location which is deemed as “Uncontrolled Environment” which can be described as a situation where the general public may be exposed to an RF source with no prior knowledge or control over their exposure.

Limits for General Population/Uncontrolled Exposure (W/kg)

Type Exposure	Uncontrolled Environment Limit (W/kg)
Spatial Peak SAR (1g cube tissue for brain or body)	1.60
Spatial Average SAR (Whole body)	0.08
Spatial Peak SAR (Limbs)	4.0

9. TEST EQUIPMENT LIST

Equipment description	Manufacturer/ Model	Identification No.	Current calibration date	Next calibration date
Stäubli Robot	Stäubli-TX60	F13/5Q2UD1/A/01	N/A	N/A
Robot Controller	Stäubli-CS8	139522	N/A	N/A
TISSUE Probe	SATIMO	SN 45/11 OCPG45	12/02/2015	12/01/2016
E-Field Probe	Speag- ES3DV3	SN:3337	10/01/2015	09/30/2016
SAM Twin Phantom	Speag-SAM	1790	N/A	N/A
Device Holder	Speag-SD 000 H01 KA	SD 000 H01 KA	N/A	N/A
DAE4	Speag-SD 000 D04 BM	1398	02/02/2016	02/01/2017
SAR Software	Speag-DASY5	DASY52.8	N/A	N/A
Liquid	SATIMO	-	N/A	N/A
Radio Communication Tester	R&S-CMU200	069Y7-158-13-712	02/29/2016	02/28/2017
Dipole	SATIMO SID835	SN30/14 DIP 0G835-332	09/01/2014	08/31/2017
Dipole	SATIMO SID1900	SN46/11 DIP 1G900-187	11/14/2013	11/13/2016
Dipole	D2450V2	SN968	06/12/2015	06/11/2018
Signal Generator	Agilent-E4438C	US41461365	02/29/2016	02/28/2017
Spectrum Analyzer E4440	Agilent	US41421290	07/23/2015	07/22/2016
Network Analyzer	Rhode & Schwarz ZVL6	SN100132	03/04/2016	03/03/2017
Attenuator	Warison /WATT-6SR1211	N/A	N/A	N/A
Attenuator	Mini-circuits / VAT-10+	N/A	N/A	N/A
Amplifier	EM30180	SN060552	03/04/2016	03/03/2017
Directional Couple	Werlatone/ C5571-10	SN99463	07/29/2015	07/28/2016
Directional Couple	Werlatone/ C6026-10	SN99482	07/29/2015	07/28/2016
Power Sensor	NRP-Z21	1137.6000.02	10/20/2015	10/19/2016
Power Sensor	NRP-Z23	US38261498	03/01/2016	02/28/2017
Power Viewer	R&S	V2.3.1.0	N/A	N/A

Note: Per KDB 865664 Dipole SAR Validation, AGC Lab has adopted 3 years calibration intervals. On annual basis, every measurement dipole has been evaluated and is in compliance with the following criteria:

1. There is no physical damage on the dipole;
2. System validation with specific dipole is within 10% of calibrated value;
3. Return-loss is within 20% of calibrated measurement;
4. Impedance is within 5Ω of calibrated measurement.

10. MEASUREMENT UNCERTAINTY

The component of uncertainty may generally be categorized according to the methods used to evaluate them. The evaluation of uncertainty by the statistical analysis of a series of observations is termed a Type A evaluation of uncertainty. The evaluation of uncertainty by means other than the statistical analysis of a series of observation is termed a Type B evaluation of uncertainty. Each component of uncertainty, however evaluated, is represented by an estimated standard deviation, termed standard uncertainty, which is determined by the positive square root of the estimated variance.

A Type A evaluation of standard uncertainty may be based on any valid statistical method for treating data. This includes calculating the standard deviation of the mean of a series of independent observations; using the method of least squares to fit a curve to the data in order to estimate the parameter of the curve and their standard deviations; or carrying out an analysis of variance in order to identify and quantify random effects in certain kinds of measurement.

A type B evaluation of standard uncertainty is typically based on scientific judgment using all of the relevant information available. These may include previous measurement data, experience, and knowledge of the behavior and properties of relevant materials and instruments, manufacture's specification, data provided in calibration reports and uncertainties assigned to reference data taken from handbooks. Broadly speaking, the uncertainty is either obtained from an outdoor source or obtained from an assumed distribution, such as the normal distribution, rectangular or triangular distributions indicated in Table as follow.

Uncertainty Distributions	Normal	Rectangular	Triangular	U-Shape
Multi-plying Factor(a)	$1/k(b)$	$1/\sqrt{3}$	$1/\sqrt{6}$	$1/\sqrt{2}$

(a) Standard uncertainty is determined as the product of the multiplying factor and the estimated range of variations in the measured quantity

(b) κ is the coverage factor

Table 13.1 Standard Uncertainty for Assumed Distribution (above table)

The combined standard uncertainty of the measurement result represents the estimated standard deviation of the result. It is obtained by combining the individual standard uncertainties of both Type A and Type B evaluation using the usual "root-sum-squares" (RSS) methods of combining standard deviations by taking the positive square root of the estimated variances.

Expanded uncertainty is a measure of uncertainty that defines an interval about the measurement result within which the measured value is confidently believed to lie. It is obtained by multiplying the combined standard uncertainty by a coverage factor. Typically, the coverage factor ranges from 2 to 3. Using a coverage factor allows the true value of a measured quantity to be specified with a defined probability within the specified uncertainty range. For purpose of this document, a coverage factor two is used, which corresponds to confidence interval of about 95 %. The DASY uncertainty Budget is shown in the following tables.

DAYS5 Measurement Uncertainty Measurement uncertainty for 150 MHz to 3GHz averaged over 1 gram / 10 gram.							
Error Description	Uncertainty value($\pm 10\%$)	Probability Distribution	Divisor	(Ci) 1g	(Ci) 10g	Standard Uncertainty (1g)	Standard Uncertainty (10g)
Measurement System							
Probe Calibration	6	Normal	1	1	1	6.00	6.00
Axial Isotropy	0.25	Rectangular	$\sqrt{3}$	1	1	0.14	0.14
Hemispherical Isotropy	1.3	Rectangular	$\sqrt{3}$	1	1	0.75	0.75
Linearity	0.3	Rectangular	$\sqrt{3}$	1	1	0.17	0.17
Probe Modulation Response	1.65	Rectangular	$\sqrt{3}$	1	1	0.95	0.95
System Detection Limits	0.9	Rectangular	$\sqrt{3}$	1	1	0.52	0.52
Boundary Effects	0.9	Rectangular	$\sqrt{3}$	1	1	0.52	0.52
Readout Electronics	0.2	Normal	1	1	1	0.20	0.20
Response Time	0	Rectangular	$\sqrt{3}$	1	1	0.00	0.00
Integration Time	0	Rectangular	$\sqrt{3}$	1	1	0.00	0.00
RF Ambient Noise	0.9	Rectangular	$\sqrt{3}$	1	1	0.52	0.52
RF Ambient Reflection	0.9	Rectangular	$\sqrt{3}$	1	1	0.52	0.52
Probe Positioner	0.7	Rectangular	$\sqrt{3}$	1	1	0.40	0.40
Probe Positioning	6.5	Rectangular	$\sqrt{3}$	1	1	3.75	3.75
Post-processing	3.8	Rectangular	$\sqrt{3}$	1	1	2.19	2.19
Test Sample Related							
Device Positioning	3.6	Normal	1	1	1	3.6	3.6
Device Holder	2.9	Normal	1	1	1	2.9	2.9
Measurement SAR Drift	5.0	Rectangular	$\sqrt{3}$	1	1	2.89	2.89
Power Scaling	0.0	Rectangular	$\sqrt{3}$	1	1	0	0
Phantom and Setup							
Phantom Uncertainty (Shape and thickness tolerances)	0.05	Normal	$\sqrt{3}$	1	1	0.03	0.03
Uncertainty in SAR correction for deviations in permittivity and conductivity	1.9	Rectangular	1	1	0.84	1.90	1.60
Liquid conductivity measurement	5	Normal	1	0.78	0.71	3.90	3.55
Liquid permittivity measurement	5	Rectangular	1	0.23	0.26	1.15	1.30
Liquid conductivity – temperature uncertainty	5	Rectangular	$\sqrt{3}$	0.78	0.71	2.25	2.05
Liquid permittivity – temperature uncertainty	5	Rectangular	$\sqrt{3}$	0.23	0.26	0.66	0.75
Combined Standard Uncertainty						10.17	9.89
Coverage Factor for 95%						K=2	
Expanded Uncertainty						$\pm 20.34\%$	$\pm 19.779\%$

DAYS5 System Check Uncertainty for 150 MHz to 3GHz averaged range								
Error Description	Uncer. value (±10%)	Prob. Dist.	Div.	(Ci) 1g	(Ci) 10g	Std. Unc. (1g)	Std. Unc. (10g)	(v _i) V _{eff}
Measurement System								
Probe Calibration	6	Normal	1	1	1	6.00	6.00	∞
Axial Isotropy	0.25	Rectangular	$\sqrt{3}$	1	1	0.14	0.14	∞
Hemispherical Isotropy	1.3	Rectangular	$\sqrt{3}$	1	1	0.75	0.75	∞
Boundary Effects	0.3	Rectangular	$\sqrt{3}$	1	1	0.17	0.17	∞
Linearity	1.65	Rectangular	$\sqrt{3}$	1	1	0.95	0.95	∞
System Detection Limits	0.9	Rectangular	$\sqrt{3}$	1	1	0.52	0.52	∞
Modulation Response	0.9	Rectangular	$\sqrt{3}$	1	1	0.52	0.52	∞
Readout Electronics	0.2	Normal	1	1	1	0.20	0.20	∞
Response Time	0	Rectangular	$\sqrt{3}$	1	1	0.00	0.00	∞
Integration Time	0	Rectangular	$\sqrt{3}$	1	1	0.00	0.00	∞
RF Ambient Noise	0.9	Rectangular	$\sqrt{3}$	1	1	0.52	0.52	∞
RF Ambient Reflection	0.9	Rectangular	$\sqrt{3}$	1	1	0.52	0.52	∞
Probe Positioner	0.7	Rectangular	$\sqrt{3}$	1	1	0.40	0.40	∞
Probe Positioning	6.5	Rectangular	$\sqrt{3}$	1	1	3.75	3.75	∞
Max. SAR Eval.	3.8	Rectangular	$\sqrt{3}$	1	1	2.19	2.19	∞
Dipole Related								
Deviation of exp. dipole	5.3	Rectangular	$\sqrt{3}$	1	1	3.06	3.06	∞
Dipole Axis to Liquid Dist.	2.0	Rectangular	$\sqrt{3}$	1	1	1.15	1.15	∞
Input power & SAR drift	3.3	Rectangular	$\sqrt{3}$	1	1	1.91	1.91	∞
Phantom and Setup								
Phantom Uncertainty (Shape and thickness tolerances)	0.05	Normal	$\sqrt{3}$	1	1	0.03	0.03	∞
Uncertainty in SAR correction for deviations in permittivity and conductivity	1.9	Rectangular	1	1	0.84	1.90	1.60	∞
Liquid conductivity measurement	5	Normal	1	0.78	0.71	3.90	3.55	∞
Liquid permittivity measurement	5	Rectangular	1	0.23	0.26	1.15	1.30	∞
Liquid conductivity – temperature uncertainty	5	Rectangular	$\sqrt{3}$	0.78	0.71	2.25	2.05	∞
Liquid permittivity – temperature uncertainty	5	Rectangular	$\sqrt{3}$	0.23	0.26	0.66	0.75	∞
Combined Std. Uncertainty						9.38	9.080	
Expanded STD Uncertainty						±18.77%	±18.16%	

11. CONDUCTED POWER MEASUREMENT

GSM BAND

Mode	Frequency(MHz)	Avg. Burst Power(dBm)	Duty cycle Factor(dBm)	Frame Power(dBm)
Maximum Power <1>				
GSM 850	824.2	31.27	-9	22.26
	836.6	31.22	-9	22.22
	848.8	31.14	-9	22.14
GPRS 850 (1 Slot)	824.2	30.17	-9	21.17
	836.6	30.13	-9	21.13
	848.8	30.19	-9	21.19
GPRS 850 (2 Slot)	824.2	28.25	-6	22.25
	836.6	28.21	-6	22.21
	848.8	28.18	-6	22.18
GPRS 850 (3 Slot)	824.2	26.24	-4.26	21.98
	836.6	26.29	-4.26	22.03
	848.8	26.23	-4.26	21.97
GPRS 850 (4 Slot)	824.2	25.34	-3	22.34
	836.6	25.38	-3	22.38
	848.8	25.26	-3	22.26

GSM BAND CONTINUE

Mode	Frequency(MHz)	Avg. Burst Power(dBm)	Duty cycle Factor(dBm)	Frame Power(dBm)
Maximum Power <1>				
PCS1900	1850.2	28.39	-9	19.34
	1880	28.26	-9	19.26
	1909.8	28.21	-9	19.21
GPRS1900 (1 Slot)	1850.2	27.43	-9	18.43
	1880	27.41	-9	18.41
	1909.8	27.48	-9	18.48
GPRS1900 (2 Slot)	1850.2	25.18	-6	19.18
	1880	25.19	-6	19.19
	1909.8	25.26	-6	19.26
GPRS1900 (3 Slot)	1850.2	23.17	-4.26	18.91
	1880	23.13	-4.26	18.87
	1909.8	23.12	-4.26	18.86
GPRS1900 (4 Slot)	1850.2	22.44	-3	19.44
	1880	22.49	-3	19.49
	1909.8	22.46	-3	19.46
Maximum Power <2>				
GSM850	824.2	30.87	-9	21.87
	836.6	30.85	-9	21.85
	848.8	30.81	-9	21.81
PCS1900	1850.2	28.16	-9	19.16
	1880	28.12	-9	19.12
	1909.8	28.08	-9	19.08

Note 1:

The Frame Power (Source-based time-averaged Power) is scaled the maximum burst average power based on time slots. The calculated methods are show as following:

Frame Power = Max burst power (1 Up Slot) – 9 dB

Frame Power = Max burst power (2 Up Slot) – 6 dB

Frame Power = Max burst power (3 Up Slot) – 4.26 dB

Frame Power = Max burst power (4 Up Slot) – 3 dB

Note 2:

SAR is not required for GPRS (1 Slot) Mode because its output power is less than of Voice Mode

UMTS BAND

HSDPA Setup Configuration:

- The EUT was connected to Base Station Agilent E5515C referred to the Setup Configuration.
- The RF path losses were compensated into the measurements.
- A call was established between EUT and Based Station with following setting:
 - (1) Set Gain Factors(β_c and β_d) parameters set according to each
 - (2) Set RMC 12.2Kbps+HSDPA mode.
 - (3) Set Cell Power=-86dBm
 - (4) Set HS-DSCH Configuration Type to FRC (H-set 1, QPSK)
 - (5) Select HSDPA Uplink Parameters
 - (6) Set Delta ACK, Delta NACK and Delta CQI=8
 - (7) Set Ack - Nack Repetition Factor to 3
 - (8) Set CQI Feedback Cycle (k) to 4ms
 - (9) Set CQI Repetition Factor to 2
 - (10) Power Ctrl Mode=All Up bits
- The transmitted maximum output power was recorded.

Table C.10.2.4: β values for transmitter characteristics tests with HS-DPCCH

Sub-test	β_c (Note5)	β_d	β_d (SF)	β_c/β_d	β_{HS} (Note1, Note 2)	CM (dB) (Note 3)	MPR (dB) (Note 3)
1	2/15	15/15	64	2/15	4/15	0.0	0.0
2	12/15(Note 4)	15/15(Note 4)	64	12/15(Note 4)	24/15	1.0	0.0
3	15/15	8/15	64	15/8	30/15	1.5	0.5
4	15/15	4/15	64	15/4	30/15	1.5	0.5

Note 1: ΔACK , $\Delta NACK$ and $\Delta CQI = 30/15$ with $\beta_{hs} = 30/15 * \beta_c$.

Note 2: For the HS-DPCCH power mask requirement test in clause 5.2C, 5.7A, and the Error Vector Magnitude (EVM) with HS-DPCCH test in clause 5.13.1A, and HSDPA EVM with phase discontinuity in clause

5.13.1AA, ΔACK and $\Delta NACK = 30/15$ with $\beta_{hs} = 30/15 * \beta_c$, and $\Delta CQI = 24/15$ with $\beta_{hs} = 24/15 * \beta_c$.

Note 3: CM = 1 for $\beta_c/\beta_d = 12/15$, $\beta_{hs}/\beta_c = 24/15$. For all other combinations of DPDCH, DPCCH and HS-DPCCH the MPR is based on the relative CM difference. This is applicable for only UEs that support HSDPA in release 6 and later releases.

Note 4: For subtest 2 the β_c/β_d ratio of 12/15 for the TFC during the measurement period (TF1, TF0) is achieved by setting the signalled gain factors for the reference TFC (TF1, TF1) to $\beta_c = 11/15$ and $\beta_d = 15/15$.

HSUPA Setup Configuration:

- The EUT was connected to Base Station Agilent E5515C referred to the Setup Configuration.
- The RF path losses were compensated into the measurements.
- A call was established between EUT and Base Station with following setting * :
 - (1) Call Configs = 5.2B, 5.9B, 5.10B, and 5.13.2B with QPSK
 - (2) Set the Gain Factors (β_c and β_d) and parameters (AG Index) were set according to each specific sub-test in the following table, C11.1.3, quoted from the TS 34.121
 - (3) Set Cell Power = -86 dBm
 - (4) Set Channel Type = 12.2k + HSPA
 - (5) Set UE Target Power
 - (6) Power Ctrl Mode= Alternating bits
 - (7) Set and observe the E-TFCI
 - (8) Confirm that E-TFCI is equal to the target E-TFCI of 75 for sub-test 1, and other subtest's E-TFCI
- The transmitted maximum output power was recorded.

Table C.11.1.3: β values for transmitter characteristics tests with HS-DPCCH and E-DCH

Sub-test	β_c	β_d	β_d (SF)	β_c/β_d	β_{HS} (Note 1)	β_{ec}	β_{ed} (Note 4) (Note 5)	β_{ed} (SF)	β_{ed} (Code s)	CM (dB) (Note 2)	MPR (dB) (Note 2) (Note 6)	AG Index (Note 5)	E-TF CI
1	11/15 (Note 3)	15/15 (Note 3)	64	11/15 (Note 3)	22/15	209/225	1309/225	4	1	1.0	0.0	20	75
2	6/15	15/15	64	6/15	12/15	12/15	94/75	4	1	3.0	2.0	12	67
3	15/15	9/15	64	15/9	30/15	30/15	β_{ed1} : 47/15 β_{ed2} : 47/15	4 4	2	2.0	1.0	15	92
4	2/15	15/15	64	2/15	4/15	2/15	56/75	4	1	3.0	2.0	17	71
5	15/15	0	-	-	5/15	5/15	47/15	4	1	1.0	0.0	12	67

Note 1: For sub-test 1 to 4, ΔACK , $\Delta NACK$ and $\Delta CQI = 30/15$ with $\beta_{hs} = 30/15 * \beta_c$. For sub-test 5, ΔACK , $\Delta NACK$ and $\Delta CQI = 5/15$ with $\beta_{hs} = 5/15 * \beta_c$.

Note 2: CM = 1 for $\beta_c/\beta_d = 12/15$, $\beta_{hs}/\beta_c = 24/15$. For all other combinations of DPDCH, DPCCH, HS DPCCH, E-DPDCH and E-DPCCH the MPR is based on the relative CM difference.

Note 3: For subtest 1 the β_c/β_d ratio of 11/15 for the TFC during the measurement period (TF1, TF0) is achieved by setting the signalled gain factors for the reference TFC (TF1, TF1) to $\beta_c = 10/15$ and $\beta_d = 15/15$.

Note 4: In case of testing by UE using E-DPDCH Physical Layer category 1, Sub-test 3 is omitted according to TS25.306 Table 5.1g.

Note 5: β_{ed} cannot be set directly; it is set by Absolute Grant Value.

Note 6: For subtests 2, 3 and 4, UE may perform E-DPDCH power scaling at max power which could results in slightly smaller MPR values.

UMTS BAND II

Mode	Frequency (MHz)	Avg. Burst Power (dBm)
WCDMA 1900 RMC	1852.4	21.59
	1880	21.43
	1907.6	21.48
WCDMA 1900 AMR	1852.4	21.22
	1880	21.26
	1907.6	21.29
HSDPA Subtest 1	1852.4	20.21
	1880	20.15
	1907.6	20.16
HSDPA Subtest 2	1852.4	20.32
	1880	20.27
	1907.6	20.22
HSDPA Subtest 3	1852.4	20.21
	1880	20.28
	1907.6	20.26
HSDPA Subtest 4	1852.4	20.27
	1880	20.11
	1907.6	20.18
HSUPA Subtest 1	1852.4	20.36
	1880	20.32
	1907.6	20.31
HSUPA Subtest 2	1852.4	20.27
	1880	20.23
	1907.6	20.21
HSUPA Subtest 3	1852.4	20.31
	1880	20.26
	1907.6	20.22
HSUPA Subtest 4	1852.4	20.31
	1880	20.24
	1907.6	20.29
HSUPA Subtest 5	1852.4	20.31
	1880	20.14
	1907.6	20.13

UMTS BAND V

Mode	Frequency (MHz)	Avg. Burst Power (dBm)
WCDMA 850 RMC	826.4	21.29
	836.6	21.24
	846.6	21.23
WCDMA 850 AMR	826.4	21.08
	836.6	21.04
	846.6	21.05
HSDPA Subtest 1	826.4	20.49
	836.6	20.45
	846.6	20.41
HSDPA Subtest 2	826.4	20.17
	836.6	20.13
	846.6	20.26
HSDPA Subtest 3	826.4	20.32
	836.6	20.28
	846.6	20.25
HSDPA Subtest 4	826.4	20.23
	836.6	20.16
	846.6	20.13
HSUPA Subtest 1	826.4	20.12
	836.6	20.29
	846.6	20.24
HSUPA Subtest 2	826.4	20.23
	836.6	20.21
	846.6	20.29
HSUPA Subtest 3	826.4	20.20
	836.6	20.15
	846.6	20.16
HSUPA Subtest 4	826.4	20.34
	836.6	20.37
	846.6	20.26
HSUPA Subtest 5	826.4	20.32
	836.6	20.19
	846.6	20.25

WIFI

Mode	Data Rate (Mbps)	Channel	Frequency(MHz)	Avg. Burst Power(dBm)
802.11b	1	01	2412	11.02
		06	2437	10.94
		11	2462	11.06
802.11g	6	01	2412	9.87
		06	2437	9.84
		11	2462	9.86
802.11n(20)	6.5	01	2412	9.38
		06	2437	9.27
		11	2462	9.22

Bluetooth_V3.0

Modulation	Channel	Frequency(MHz)	Avg. Burst Power (dBm)
GFSK	0	2402	2.38
	39	2441	2.22
	78	2480	2.14
$\pi/4$ -DQPSK	0	2402	0.08
	39	2441	0.04
	78	2480	0.05
8-DPSK	0	2402	-0.06
	39	2441	-0.07
	78	2480	-0.03

According to 3GPP 25.101 sub-clause 6.2.2 , the maximum output power is allowed to be reduced by following the table.

Table 6.1aA: UE maximum output power with HS-DPCCH and E-DCH

UE Transmit Channel Configuration	CM(db)	MPR(db)
For all combinations of ,DPDCH,DPCCH HS-DPDCH,E-DPDCH and E-DPCCH	$0 \leq CM \leq 3.5$	$MAX(CM-1,0)$
Note: CM=1 for $\beta_d/\beta_{d12/15}$, $\beta_{hs}/\beta_{c24/15}$.For all other combinations of DPDCH, DPCCH, HS-DPCCH, E-DPDCH and E-DPCCH the MPR is based on the relative CM difference.		

The device supports MPR to solve linearity issues (ACLR or SEM) due to the higher peak-to average ratios (PAR) of the HSUPA signal. This prevents saturating the full range of the TX DAC inside of device and provides a reduced power output to the RF transceiver chip according to the Cubic Metric (a function of the combinations of DPDCH, DPCCH, HS-DPCCH, E-DPDCH and E-DPCCH).

When E-DPDCH channels are present the beta gains on those channels are reduced firsts to try to get the power under the allowed limit. If the beta gains are lowered as far as possible, then a hard limiting is applied at the maximum allowed level.

The SW currently recalculates the cubic metric every time the beta gains on the E-DPDCH are reduced. The cubic metric will likely get lower each time this is done .However, there is no reported reduction of maximum output power in the HSUPA mode since the device also provides a compensation for the power back-off by increasing the gain of TX_AGC in the transceiver (PA) device.

The end effect is that the DUT output power is identical to the case where there is no MPR in the device.

12. TEST RESULTS

12.1. SAR Test Results Summary

12.1.1. Test position and configuration

Head SAR was performed with the device configured in the positions according to IEEE 1528-2013, and Body-worn SAR was performed with the device 5mm from the phantom.

12.1.2. Operation Mode

1. Per KDB 447498 D01 v06 ,for each exposure position, if the highest 1-g SAR is ≤ 0.8 W/kg, testing for low and high channel is optional.
2. Per KDB 865664 D01 v01r04,for each frequency band, if the measured SAR is ≥ 0.8 W/Kg, testing for repeated SAR measurement is required , that the highest measured SAR is only to be tested. When the SAR results are near the limit, the following procedures are required for each device to verify these types of SAR measurement related variation concerns by repeating the highest measured SAR configuration in each frequency band.
 - (1) When the original highest measured SAR is ≥ 0.8 W/Kg, repeat that measurement once.
 - (2) Perform a second repeated measurement only if the ratio of largest to smallest SAR for the original and first repeated measurements is >1.20 or when the original or repeated measurement is ≥ 1.45 W/Kg.
 - (3) Perform a third repeated measurement only if the original, first and second repeated measurement is ≥ 1.5 W/Kg and ratio of largest to smallest SAR for the original, first and second measurement is ≥ 1.20 .
3. Body-worn exposure conditions are intended to voice call operations, therefore GSM voice call mode is selected to be test.
4. Per KDB 648474 D04 v01r03,when the reported SAR for a body-worn accessory measured without a headset connected to the handset is ≤ 1.2 W/Kg, SAR testing with a headset connected is not required.
5. Per 248227 D01 v02r02, SAR is not required for 802.11g channels when the maximum average output power is less than 1/4dB higher than measured on the corresponding 802.11b channels.
6. Per KDB 941225 D06 V02r01, When the same wireless mode transmission configurations for voice and data are required for SAR measurements, the more conservative configuration with a smaller separation distance should be tested for the overlapping SAR configurations.
7. Maximum Scaling SAR in order to calculate the Maximum SAR values to test under the standard Peak Power, Calculation method is as follows:
Maximum Scaling SAR =tested SAR (Max.) \times [maximum turn-up power (mw)/ maximum measurement output power(mw)]
8. Proximity sensor, just for avoiding the wrong operation in the phone screen when call, and has no influence on output power or SAR result.

12.1.3. Test Result

SAR MEASUREMENT									
Depth of Liquid (cm):>15					Relative Humidity (%): 65				
Product: Smart Phone									
Test Mode: GSM850 with GMSK modulation									
Position	Mode	Ch.	Fr. (MHz)	Power Drift (<±0.2)	SAR (1g) (W/kg)	Max. Turn-up Power (dBm)	Meas. output Power (dBm)	Scaled SAR (W/Kg)	Limit (W/kg)
SIM 1 Card									
Left Cheek	voice	190	836.6	-0.05	0.111	31.5	31.22	0.118	1.6
Left Tilt	voice	190	836.6	0.01	0.068	31.5	31.22	0.073	1.6
Right Cheek	voice	190	836.6	0.18	0.106	31.5	31.22	0.113	1.6
Right Tilt	voice	190	836.6	0.10	0.079	31.5	31.22	0.084	1.6
Left Cheek	GPRS-4 slot	190	836.6	-0.14	0.201	25.5	25.38	0.207	1.6
Left Tilt	GPRS-4 slot	190	836.6	0.06	0.120	25.5	25.38	0.123	1.6
Right Cheek	GPRS-4 slot	190	836.6	0.10	0.188	25.5	25.38	0.193	1.6
Right Tilt	GPRS-4 slot	190	836.6	0.18	0.099	25.5	25.38	0.102	1.6
SIM 2 Card									
Left Cheek	GPRS-4 slot	190	836.6	-0.00	0.192	25.5	25.38	0.197	1.6

Note:

- When the 1-g Reported SAR is ≤ 0.8 W/kg, testing for low and high channel is optional. Refer to KDB 447498.

SAR MEASUREMENT									
Depth of Liquid (cm):>15				Relative Humidity (%): 45.1 for Apr. 26,2016; 53.1 for Apr. 04,2016					
Product: Smart Phone									
Test Mode: GSM850 with GMSK modulation									
Position	Mode	Ch.	Fr. (MHz)	Power Drift (<±0.2)	SAR (1g) (W/kg)	Max. Turn-up Power (dBm)	Meas. output Power (dBm)	Scaled SAR (W/Kg)	Limit (W/kg)
SIM 1 Card									
Body back	voice	190	836.6	0.00	0.697	31.5	31.22	0.743	1.6
Body front	voice	190	836.6	0.04	0.425	31.5	31.22	0.453	1.6
Body back	GPRS-4 slot	190	836.6	-0.04	0.639	25.5	25.38	0.657	1.6
Body front	GPRS-4 slot	190	836.6	-0.07	0.382	25.5	25.38	0.393	1.6
Edge 2(Right)	GPRS-4 slot	190	836.6	-0.00	0.130	25.5	25.38	0.134	1.6
Edge 3(Bottom)	GPRS-4 slot	190	836.6	-0.10	0.108	25.5	25.38	0.111	1.6
Edge 4(Left)	GPRS-4 slot	190	836.6	-0.03	0.167	25.5	25.38	0.172	1.6
SIM 2 Card									
Body back	voice	190	836.6	0.00	0.687	25.5	25.38	0.706	1.6

Note:

- When the 1-g Reported SAR is ≤ 0.8 W/kg, testing for low and high channel is optional. Refer to KDB 447498.
- The test separation for body back and body front is 5mm of all above table.
- The test separation for 4 Edges is 10mm of all above table.

SAR MEASUREMENT									
Depth of Liquid (cm):>15				Relative Humidity (%): 58.8					
Product: Smart Phone									
Test Mode: PCS1900 with GMSK modulation									
Position	Mode	Ch.	Fr. (MHz)	Power Drift (<±0.2)	SAR (1g) (W/kg)	Max. Turn-up Power (dBm)	Meas. output Power (dBm)	Scaled SAR (W/Kg)	Limit (W/kg)
SIM 1 Card									
Left Cheek	voice	512	1850.2	0.03	0.988	28.5	28.39	1.013	1.6
Left Cheek	voice	661	1880.0	-0.08	1.100	28.5	28.26	1.162	1.6
Left Cheek	voice	810	1909.8	0.12	1.020	28.5	28.21	1.090	1.6
Left Tilt	voice	661	1880.0	-0.08	0.420	28.5	28.26	0.444	1.6
Right Cheek	voice	661	1880.0	0.06	0.775	28.5	28.26	0.819	1.6
Right Tilt	voice	661	1880.0	0.03	0.305	28.5	28.26	0.322	1.6
Left Cheek	GPRS-4 slot	512	1850.2	-0.05	1.15	22.5	22.44	1.166	1.6
Left Cheek	GPRS-4 slot	661	1880.0	-0.15	1.19	22.5	22.49	1.193	1.6
Left Cheek	GPRS-4 slot	810	1909.8	0.02	1.18	22.5	22.46	1.191	1.6
Left Tilt	GPRS-4 slot	661	1880.0	0.03	0.462	22.5	22.49	0.463	1.6
Right Cheek	GPRS-4 slot	661	1880.0	0.07	0.792	22.5	22.49	0.794	1.6
Right Tilt	GPRS-4 slot	661	1880.0	-0.09	0.371	22.5	22.49	0.372	1.6
SIM 2 Card									
Left Cheek	GPRS-4 slot	661	1880.0	0.05	1.09	28.5	28.12	1.190	1.6

Note:

- When the 1-g Reported SAR is ≤ 0.8 W/kg, testing for low and high channel is optional. Refer to KDB 447498.

SAR MEASUREMENT									
Depth of Liquid (cm):>15					Relative Humidity (%): 56.7 for Apr. 24,2016; 54.9 for Apr. 14,2016				
Product: Smart Phone									
Test Mode: PCS1900 with GMSK modulation									
Position	Mode	Ch.	Fr. (MHz)	Power Drift (<±0.2)	SAR (1g) (W/kg)	Max. Turn-up Power (dBm)	Meas. output Power (dBm)	Scaled SAR (W/Kg)	Limit (W/kg)
SIM 1 Card									
Body back	voice	661	1880.0	-0.07	0.750	28.5	28.26	0.793	1.6
Body front	voice	661	1880.0	0.05	0.611	28.5	28.26	0.646	1.6
Body back	GPRS-4 slot	512	1850.2	-0.01	0.854	22.5	22.44	0.866	1.6
Body back	GPRS-4 slot	661	1880.0	0.09	0.877	22.5	22.49	0.879	1.6
Body back	GPRS-4 slot	810	1909.8	-0.03	0.901	22.5	22.46	0.909	1.6
Body front	GPRS-4 slot	661	1880.0	0.03	0.720	22.5	22.49	0.722	1.6
Edge 2(Right)	GPRS-4 slot	661	1880.0	0.01	0.110	22.5	22.49	0.110	1.6
Edge 3(Bottom)	GPRS-4 slot	661	1880.0	-0.00	0.335	22.5	22.49	0.336	1.6
Edge 4(Left)	GPRS-4 slot	661	1880.0	0.04	0.577	22.5	22.49	0.578	1.6
SIM 2 Card									
Body back	GPRS-4 slot	810	1909.8	0.11	0.872	22.5	22.46	0.880	1.6

Note:

- When the 1-g Reported SAR is ≤ 0.8 W/kg, testing for low and high channel is optional. Refer to KDB 447498.
- The test separation for body back and body front is 5mm of all above table.
- The test separation for 4 Edges is 10mm of all above table

SAR MEASUREMENT									
Depth of Liquid (cm):>15					Relative Humidity (%): 58.8				
Product: Smart Phone									
Test Mode: WCDMA Band II with QPSK modulation									
Position	Mode	Ch.	Fr. (MHz)	Power Drift (<±0.2)	SAR (1g) (W/kg)	Max. Turn-up Power (dBm)	Meas. output Power (dBm)	Scaled SAR (W/Kg)	Limit (W/kg)
Left Cheek	RMC 12.2kbps	9400	1880	0.04	0.707	22.00	21.43	0.806	1.6
Left Tilt	RMC 12.2kbps	9400	1880	0.02	0.433	22.00	21.43	0.494	1.6
Right Cheek	RMC 12.2kbps	9262	1852.4	-0.13	0.910	22.00	21.59	1.000	1.6
Right Cheek	RMC 12.2kbps	9400	1880	0.07	0.952	22.00	21.43	1.086	1.6
Right Cheek	RMC 12.2kbps	9538	1907.6	-0.08	0.896	22.00	21.48	1.010	1.6
Right Tilt	RMC 12.2kbps	9400	1880	-0.01	0.472	22.00	21.43	0.538	1.6

SAR MEASUREMENT									
Depth of Liquid (cm):>15					Relative Humidity (%): 56.7 for Apr. 24,2016; 54.9 for Apr. 14,2016				
Product: Smart Phone									
Test Mode: WCDMA Band II with QPSK modulation									
Position	Mode	Ch.	Fr. (MHz)	Power Drift (<±0.2)	SAR (1g) (W/kg)	Max. Turn-up Power (dBm)	Meas. output Power (dBm)	Scaled SAR (W/Kg)	Limit (W/kg)
Body back	RMC 12.2kbps	9262	1852.4	0.03	1.05	22.00	21.59	1.154	1.6
Body back	RMC 12.2kbps	9400	1880	-0.18	1.13	22.00	21.43	1.288	1.6
Body back	RMC 12.2kbps	9538	1907.6	0.14	1.00	22.00	21.48	1.127	1.6
Body front	RMC 12.2kbps	9400	1880	0.06	0.706	22.00	21.43	0.805	1.6
Edge 2(Right)	RMC 12.2kbps	9400	1880	0.15	0.144	22.00	21.43	0.164	1.6
Edge 3(Bottom)	RMC 12.2kbps	9400	1880	0.02	0.342	22.00	21.43	0.390	1.6
Edge 4(Left)	RMC 12.2kbps	9400	1880	0.03	0.752	22.00	21.43	0.857	1.6

Note:

- When the 1-g Reported SAR is ≤ 0.8 W/kg, testing for low and high channel is optional. Refer to KDB 447498.
- The test separation for body back and body front is 5mm of all above table.
- The test separation for 4 Edges is 10mm of all above table

SAR MEASUREMENT									
Depth of Liquid (cm):>15					Relative Humidity (%): 65				
Product: Smart Phone									
Test Mode: WCDMA Band V with QPSK modulation									
Position	Mode	Ch.	Fr. (MHz)	Power Drift (<±0.2)	SAR (1g) (W/kg)	Max. Turn-up Power (dBm)	Meas. output Power (dBm)	Scaled SAR (W/Kg)	Limit (W/kg)
Left Cheek	RMC 12.2kbps	4183	836.6	0.16	0.272	21.5	21.24	0.289	1.6
Left Tilt	RMC 12.2kbps	4183	836.6	0.06	0.105	21.5	21.24	0.111	1.6
Right Cheek	RMC 12.2kbps	4183	836.6	-0.13	0.236	21.5	21.24	0.251	1.6
Right Tilt	RMC 12.2kbps	4183	836.6	0.07	0.119	21.5	21.24	0.126	1.6

SAR MEASUREMENT									
Depth of Liquid (cm):>15				Relative Humidity (%): 45.1 for Apr. 26,2016; 53.1 for Apr. 04,2016					
Product: Smart Phone									
Test Mode: WCDMA Band V with QPSK modulation									
Position	Mode	Ch.	Fr. (MHz)	Power Drift (<±0.2)	SAR (1g) (W/kg)	Max. Turn-up Power (dBm)	Meas. output Power (dBm)	Scaled SAR (W/Kg)	Limit (W/kg)
Body back	RMC 12.2kbps	4183	836.6	-0.02	0.738	21.5	21.24	0.784	1.6
Body front	RMC 12.2kbps	4183	836.6	0.09	0.513	21.5	21.24	0.545	1.6
Edge 2(Right)	RMC 12.2kbps	4183	836.6	-0.04	0.150	21.5	21.24	0.159	1.6
Edge 3(Bottom)	RMC 12.2kbps	4183	836.6	0.05	0.106	21.5	21.24	0.113	1.6
Edge 4(Left)	RMC 12.2kbps	4183	836.6	0.03	0.246	21.5	21.24	0.261	1.6

Note:

- When the 1-g Reported SAR is ≤ 0.8 W/kg, testing for low and high channel is optional. Refer to KDB 447498.
- The test separation for body back and body front is 5mm of all above table.
- The test separation for 4 Edges is 10mm of all above table

SAR MEASUREMENT									
Depth of Liquid (cm):>15				Relative Humidity (%): 65 for Apr. 26,2016; 67.5 for Apr. 09,2016					
Product: Smart Phone									
Test Mode:802.11b									
Position	Mode	Ch.	Fr. (MHz)	Power Drift (<±0.2)	SAR (1g) (W/kg)	Max. Turn-up Power (dBm)	Meas. output Power (dBm)	Scaled SAR (W/Kg)	Limit (W/kg)
Left Cheek	DTS	6	2437	0.06	0.339	11.5	10.94	0.386	1.6
Left Tilt	DTS	6	2437	-0.18	0.120	11.5	10.94	0.137	1.6
Right Cheek	DTS	6	2437	0.09	0.289	11.5	10.94	0.329	1.6
Right Tilt	DTS	6	2437	-0.06	0.096	11.5	10.94	0.109	1.6
Body back	DTS	6	2437	-0.02	0.245	11.5	10.94	0.279	1.6
Body front	DTS	6	2437	0.07	0.238	11.5	10.94	0.271	1.6
Edge 1 (Top)	DTS	6	2437	-0.05	0.189	11.5	10.94	0.215	1.6
Edge 4(Left)	DTS	6	2437	0.08	0.203	11.5	10.94	0.231	1.6

Note:

- According to KDB248227, SAR is not required for 802.11n HT20/HT40 channels when the maximum average output power is less than 1/4 dB higher than that measured on the corresponding 802.11a/b channels.
- All of above "DTS" means data transmitters.
- The test separation for body back and body front is 5mm of all above table.
- The test separation for 4 Edges is 10mm of all above table

Repeated SAR										
Product: Smart Phone										
Test Mode: PCS1900 & WCDMA Band II with QPSK modulation										
Position	Mode	Ch.	Fr. (MHz)	Power Drift (<±0.2)	Once SAR (1g) (W/kg)	Power Drift (<±0.2)	Twice SAR (1g) (W/kg)	Power Drift (<±0.2)	Third SAR (1g) (W/kg)	Limit (W/kg)
Left Cheek	GPRS-4 slot	661	1880.0	0.02	1.10	--	--	--	--	1.6
Body back	RMC12.2kbps	9400	1880	-0.01	1.10	--	--	--	--	1.6

Simultaneous Multi-band Transmission Evaluation: Application Simultaneous Transmission information:

NO	Simultaneous state	Portable Handset		
		Head	Body-worn	Hotspot
1	GSM(voice)+WLAN 2.4GHz (data)	Yes	Yes	-
2	WCDMA(voice)+WLAN 2.4GHz (data)	Yes	Yes	-
3	GSM(voice)+Bluetooth(data)	-	Yes	-
4	WCDMA(voice)+Bluetooth(data)	-	Yes	-
5	GSM (Data) + Bluetooth(data)	-	Yes	
6	GSM (Data) + WLAN 2.4GHz (data)	Yes	Yes	Yes
7	WCDMA (Data) + Bluetooth(data)	--	Yes	
8	WCDMA (Data) + WLAN 2.4GHz (data)	Yes	Yes	Yes

NOTE:

1. WLAN and BT share the same antenna, and cannot transmit simultaneously.
2. Simultaneous with every transmitter must be the same test position.
3. KDB 447498 D01, BT SAR is excluded as below table.
4. KDB 447498 D01, for handsets the test separation distance is determined by the smallest distance between the outer surface of the device and the user; which is 0mm for head SAR and 5mm for body-worn SAR.
5. According to KDB 447498 D01 4.3.1, Standalone SAR test exclusion is as follow:
For 100 MHz to 6 GHz and test separation distances ≤ 50 mm, the 1-g and 10-g SAR test exclusion thresholds are determined by the following:

$$[(\text{max. power of channel, including tune-up tolerance, mW}) / (\text{min. test separation distance, mm})] \cdot [\sqrt{f(\text{GHz})}] \leq 3.0$$
for 1-g SAR, and ≤ 7.5 for 10-g extremity SAR³⁰, where
 - f(GHz) is the RF channel transmit frequency in GHz
 - Power and distance are rounded to the nearest mW and mm before calculation³¹
 - The result is rounded to one decimal place for comparison
 - The values 3.0 and 7.5 are referred to as numeric thresholds in step b) below
The test exclusions are applicable only when the minimum test separation distance is ≤ 50 mm, and for transmission frequencies between 100 MHz and 6 GHz. When the minimum test separation distance is < 5 mm, a distance of 5 mm according to 4.1 f) is applied to determine SAR test exclusion.
6. If the test separation distance is < 5 mm, 5mm is used for excluded SAR calculation.
7. According to KDB 447498 D01 4.3.2, simultaneous transmission SAR test exclusion is as follow:
 - (1) Simultaneous transmission SAR test exclusion is determined for each operating configuration and exposure condition according to the reported standalone SAR of each applicable simultaneous transmitting antenna.
 - (2) Any transmitters and antennas should be considered when calculating simultaneous mode.
 - (3) For mobile phone and PC, it's the sum of all transmitters and antennas at the same mode with same position in each applicable exposure condition
 - (4) When the standalone SAR test exclusion of section 4.3.2 is applied to an antenna that transmits simultaneously with other antennas, the standalone SAR must be estimated according to the following to det
$$[(\text{max. power of channel, including tune-up tolerance, mW}) / (\text{min. test separation distance, mm})] \cdot [\sqrt{f(\text{GHz})/x}] \text{ W/kg}$$
for test separation distances ≤ 50 mm;
where x = 7.5 for 1-g SAR, and x = 18.75 for 10-g SAR.

8. When the sum of SAR is larger than the limit, SAR test exclusion is determined by the SAR to peak location separation ratio. The simultaneous transmitting antennas in each operating mode and exposure condition combination must be considered one pair at a time to determine the SAR to peak location separation ratio to qualify for test exclusion. The ratio is determined by $(SAR1 + SAR2)1.5/R_i$, rounded to two decimal digits, and must be ≤ 0.04 for all antenna pairs in the configuration to qualify for 1-g SAR test exclusion.

Estimated SAR		Max Power including Tune-up Tolerance		Separation Distance (mm)	Estimated SAR (W/kg)
		dBm	mW		
BT	Head	3	1.995	0	0.082
	Body	3	1.995	5	0.082
	Body	3	1.995	10	0.041

Maximum test results (WWAN) with BT SAR:

BT: Head (0 cm gap): 0.082W/kg , Body (0.5cm gap): 0.082W/kg and Body (1.0cm gap): 0.041W/kg

Sum of the SAR for GSM 850 & Wi-Fi & BT:

RF Exposure Conditions	Test Position	Simultaneous Transmission Scenario			Σ 1-g SAR (W/Kg)	SPLSR (Yes/No)
		GSM 850	Wi-Fi DTS Band	Bluetooth		
Head (voice)	Left Touch	0.118	0.386		0.504	No
	Left Tilt	0.073	0.137		0.210	No
	Right Touch	0.113	0.329		0.442	No
	Right Tilt	0.084	0.109		0.193	No
Body-worn	Rear	0.743	0.279		1.022	No
		0.743		0.082	0.825	No
	Front	0.453	0.123		0.576	No
		0.453		0.082	0.535	No
Head (VoIP)	Left Touch	0.207	0.386		0.593	No
	Left Tilt	0.123	0.137		0.260	No
	Right Touch	0.193	0.329		0.522	No
	Right Tilt	0.102	0.109		0.211	No
Hotspot	Rear	0.657	0.279		0.936	No
	Front	0.393	0.123		0.516	No
	Edge 4	0.172	0.231		0.403	No
	Rear	0.657		0.082	0.739	No
	Front	0.393		0.082	0.475	No
	Edge 4	0.172		0.041	0.213	No

Note:

- According to KDB 447498 D01 General RF Exposure Guidance, when the simultaneous transmission SAR is less than 1.6 W/Kg, SPLSR assessment is not required.
- SPLSR mean is “The SAR to Peak Location Separation Ratio “

Sum of the SAR for GSM 1900 & Wi-Fi & BT:

RF Exposure Conditions	Test Position	Simultaneous Transmission Scenario			Σ 1-g SAR (W/Kg)	SPLSR (Yes/No)
		GSM 1900	Wi-Fi DTS Band	Bluetooth		
Head (voice)	Left Touch	1.100	0.386		1.548	No
	Left Tilt	0.444	0.137		0.581	No
	Right Touch	0.819	0.329		1.148	No
	Right Tilt	0.322	0.109		0.431	No
Body-worn	Rear	0.793	0.279		1.072	No
		0.793		0.082	0.875	No
	Front	0.442	0.123		0.565	No
		0.442		0.082	0.524	No
Head (VoIP)	Left Touch	1.193	0.386		1.579	No
	Left Tilt	0.463	0.137		0.600	No
	Right Touch	0.794	0.329		1.123	No
	Right Tilt	0.372	0.109		0.481	No
Hotspot	Rear	0.909	0.279		1.188	No
	Front	0.473	0.123		0.596	No
	Edge 4	0.578	0.231		0.809	No
	Rear	0.909		0.082	0.991	No
	Front	0.473		0.082	0.555	No
	Edge 4	0.578		0.041	0.619	No

Note:

- According to KDB 447498 D01 General RF Exposure Guidance, when the simultaneous transmission SAR is less than 1.6 W/Kg, SPLSR assessment is not required.
- SPLSR mean is “The SAR to Peak Location Separation Ratio “

Sum of the SAR for WCDMA Band II & Wi-Fi & BT:

RF Exposure Conditions	Test Position	Simultaneous Transmission Scenario			Σ 1-g SAR (W/Kg)	SPLSR (Yes/No)
		WCDMA Band II	Wi-Fi DTS Band	Bluetooth		
Head	Left Touch	0.806	0.386		1.192	No
	Left Tilt	0.494	0.137		0.631	No
	Right Touch	1.086	0.329		1.415	No
	Right Tilt	0.538	0.109		0.647	No
Hotspot	Rear	1.288	0.279		1.567	No
	Front	0.698	0.123		0.821	No
	Edge 4	0.857	0.231		1.088	No
	Rear	1.288		0.082	1.370	No
	Front	0.698		0.082	0.780	No
	Edge 4	0.857		0.041	0.898	No

Sum of the SAR for WCDMA Band V & Wi-Fi & BT:

RF Exposure Conditions	Test Position	Simultaneous Transmission Scenario			Σ 1-g SAR (W/Kg)	SPLSR (Yes/No)
		WCDMA Band V	Wi-Fi DTS Band	Bluetooth		
Head	Left Touch	0.289	0.386		0.675	No
	Left Tilt	0.111	0.137		0.248	No
	Right Touch	0.251	0.329		0.580	No
	Right Tilt	0.126	0.109		0.235	No
Hotspot	Rear	0.784	0.279		1.063	No
	Front	0.256	0.123		0.379	No
	Edge 4	0.261	0.231		0.492	No
	Rear	0.784		0.082	0.866	No
	Front	0.256		0.082	0.338	No
	Edge 4	0.261		0.041	0.302	No

Note:

- According to KDB 447498 D01 General RF Exposure Guidance, when the simultaneous transmission SAR is less than 1.6 W/Kg, SPLSR assessment is not required.
- SPLSR mean is "The SAR to Peak Location Separation Ratio "

APPENDIX A. SAR SYSTEM CHECK DATA

Test Laboratory: AGC Lab

Date: Apr. 25, 2016

System Check Head 835 MHz

DUT: Dipole 835MHz Type: SID 835

Communication System CW; Communication System Band: D835 (835.0 MHz); Duty Cycle: 1:1;
Frequency: 835 MHz; Medium parameters used: $f = 835$ MHz; $\sigma = 0.89$ mho/m; $\epsilon_r = 42.10$; $\rho = 1000$ kg/m³ ;
Phantom section: Flat Section; Input Power=18dBm
Ambient temperature (°C): 21.3, Liquid temperature (°C): 21.2

DASY Configuration:

- Probe: ES3DV3 – SN3337; ConvF(6.32, 6.32, 6.32); Calibrated:10/01/2015;
- Sensor-Surface: 3mm (Mechanical Surface Detection), $z = 1.0, 31.0$
- Electronics: DAE4 Sn1398; Calibrated: 02/02/2016
- Phantom: SAM (20deg probe tilt) with CRP v5.0; Type: QD000P40CD;
- DASY52 52.8.7(1137); SEMCAD X 14.6.10(7164)

Configuration/System Check 835MHz Head/ Area Scan (7x12x1): Measurement grid: $dx=15$ mm, $dy=15$ mm
Maximum value of SAR (measured) = 0.734 W/kg

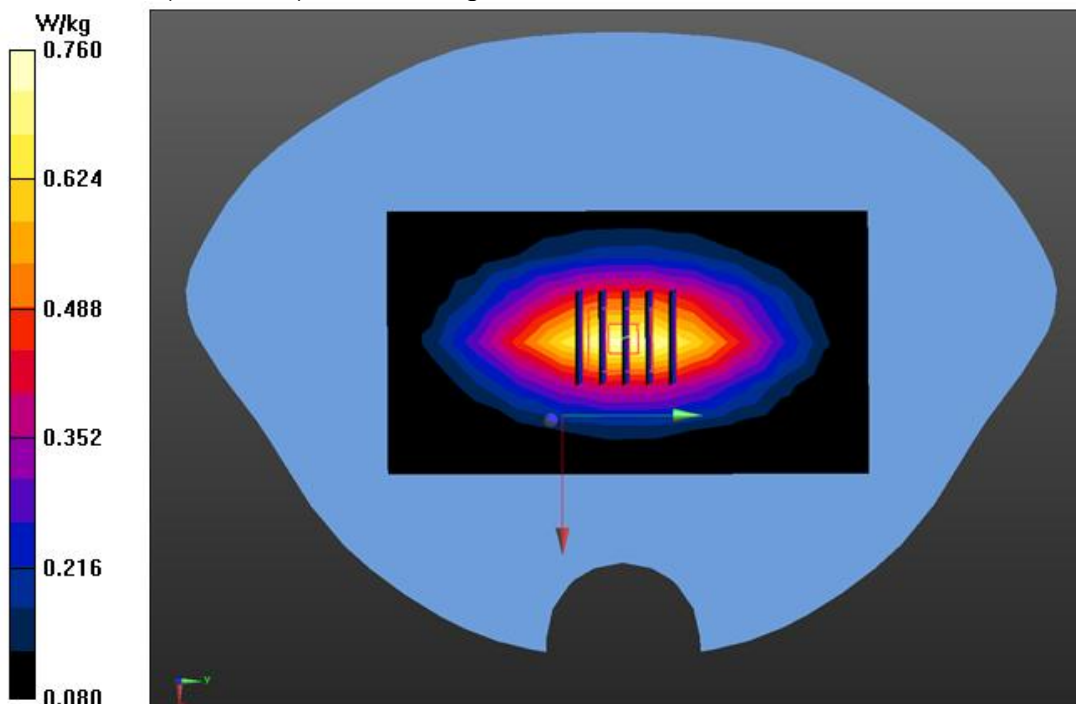
Configuration/System Check 835MHz Head/ Zoom Scan (5x5x7)/Cube 0: Measurement grid: $dx=8$ mm, $dy=8$ mm, $dz=5$ mm

Reference Value = 28.012 V/m; Power Drift = 0.07 dB

Peak SAR (extrapolated) = 0.986 W/kg

SAR(1 g) = 0.638 W/kg; SAR(10 g) = 0.407 W/kg

Maximum value of SAR (measured) = 0.760 W/kg



Test Laboratory: AGC Lab
System Check Body 835 MHz
DUT: Dipole 835 MHz Type: SID 835

Date: Apr. 26,2016

Communication System CW; Communication System Band: D835 (835.0 MHz); Duty Cycle: 1:1;
Frequency: 835 MHz; Medium parameters used: $f = 835$ MHz; $\sigma = 0.95$ mho/m; $\epsilon_r = 55.99$; $\rho = 1000$ kg/m³ ;
Phantom section: Flat Section; Input Power=18dBm
Ambient temperature (°C): 21.3, Liquid temperature (°C): 21.9

DASY Configuration:

- Probe: ES3DV3 – SN3337; ConvF(6.31, 6.31, 6.31); Calibrated:10/01/2015;
- Sensor-Surface: 3mm (Mechanical Surface Detection), $z = 1.0, 31.0$
- Electronics: DAE4 Sn1398; Calibrated: 02/02/2016
- Phantom: SAM (20deg probe tilt) with CRP v5.0; Type: QD000P40CD;
- DASY52 52.8.7(1137); SEMCAD X 14.6.10(7164)

Configuration/System Check 835MHz Body/ Area Scan (7x12x1): Measurement grid: $dx=15$ mm, $dy=15$ mm
Maximum value of SAR (measured) = 0.748 W/kg

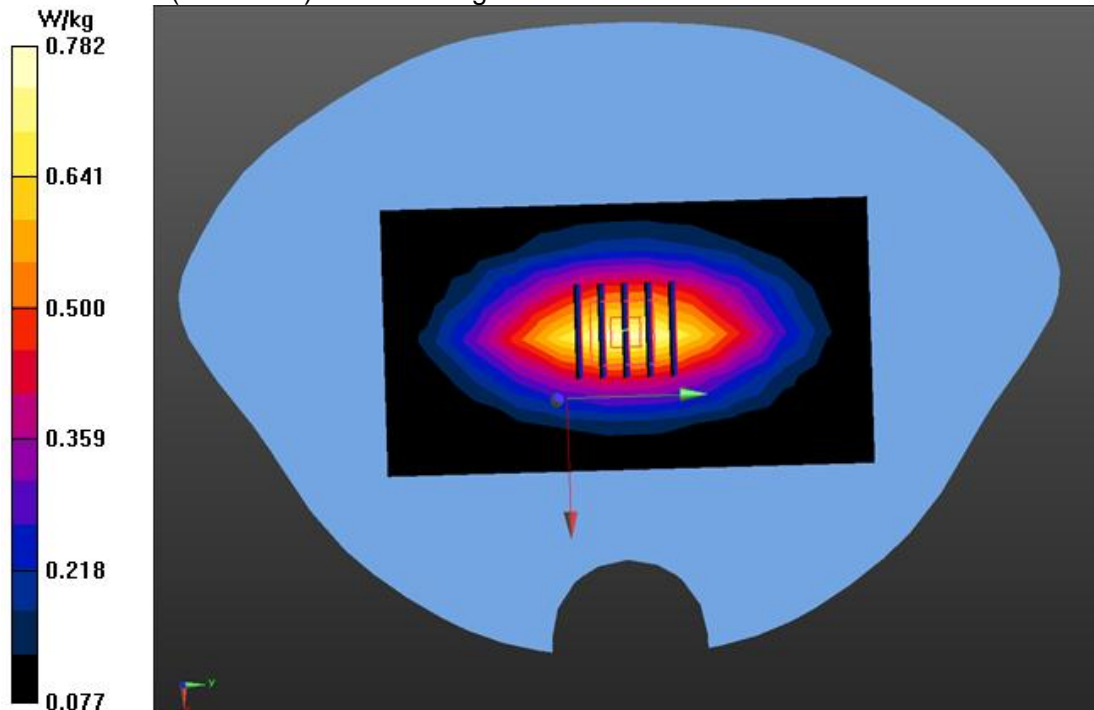
Configuration/System Check 835MHz Body/ Zoom Scan (5x5x7)/Cube 0: Measurement grid: $dx=8$ mm, $dy=8$ mm, $dz=5$ mm

Reference Value = 30.458 V/m; Power Drift = -0.10 dB

Peak SAR (extrapolated) = 0.997 W/kg

SAR(1 g) = 0.651 W/kg; SAR(10 g) = 0.415 W/kg

Maximum value of SAR (measured) = 0.782 W/kg



Test Laboratory: AGC Lab
System Check Body 835 MHz
DUT: Dipole 835 MHz Type: SID 835

Date: Apr. 04,2016

Communication System CW; Communication System Band: D835 (835.0 MHz); Duty Cycle: 1:1;
Frequency: 835 MHz; Medium parameters used: $f = 835$ MHz; $\sigma = 0.95$ mho/m; $\epsilon_r = 55.45$; $\rho = 1000$ kg/m³ ;
Phantom section: Flat Section; Input Power=18dBm
Ambient temperature (°C): 21.9, Liquid temperature (°C): 22.0

DASY Configuration:

- Probe: ES3DV3 – SN3337; ConvF(6.31, 6.31, 6.31); Calibrated:10/01/2015;
- Sensor-Surface: 3mm (Mechanical Surface Detection), $z = 1.0, 31.0$
- Electronics: DAE4 Sn1398; Calibrated: 02/02/2016
- Phantom: SAM (20deg probe tilt) with CRP v5.0; Type: QD000P40CD;
- DASY52 52.8.7(1137); SEMCAD X 14.6.10(7164)

Configuration/System Check 835MHz Body/ Area Scan (7x12x1): Measurement grid: $dx=15$ mm, $dy=15$ mm
Maximum value of SAR (measured) = 0.703 W/kg

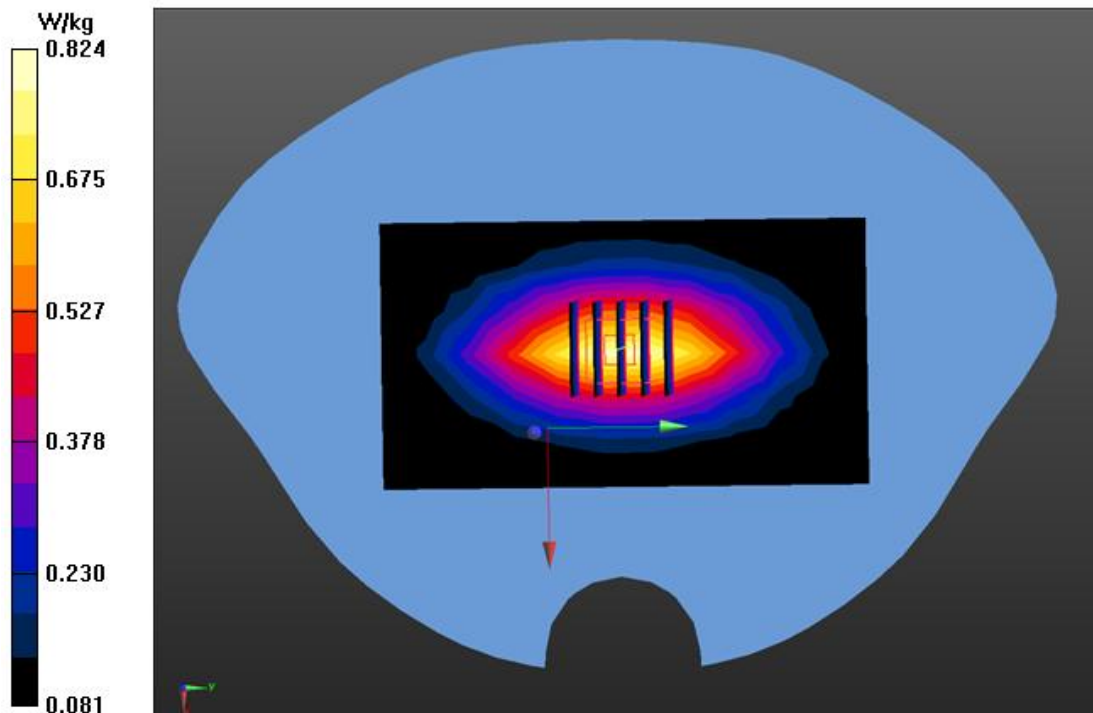
Configuration/System Check 835MHz Body/ Zoom Scan (5x5x7)/Cube 0: Measurement grid: $dx=8$ mm, $dy=8$ mm, $dz=5$ mm

Reference Value = 25.784 V/m; Power Drift = -0.10 dB

Peak SAR (extrapolated) = 0.977 W/kg

SAR(1 g) = 0.645 W/kg; SAR(10 g) = 0.414 W/kg

Maximum value of SAR (measured) = 0.824 W/kg



Test Laboratory: AGC Lab
System Check Head 1900MHz
DUT: Dipole 1900 MHz; Type: SID 1900

Date: Apr. 23,2016

Communication System: CW; Communication System Band: D1900 (1900.0 MHz); Duty Cycle:1:1;
Frequency: 1900 MHz; Medium parameters used: $f = 1900$ MHz; $\sigma = 1.40$ mho/m; $\epsilon_r = 40.83$; $\rho = 1000$ kg/m³ ;
Phantom section: Flat Section; Input Power=18dBm
Ambient temperature (°C):22.0, Liquid temperature (°C): 21.7

DASY Configuration:

- Probe: ES3DV3 – SN3337; ConvF(5.23, 5.23, 5.23); Calibrated:10/01/2015;
- Sensor-Surface: 3mm (Mechanical Surface Detection), $z = 1.0, 31.0$
- Electronics: DAE4 Sn1398; Calibrated: 02/02/2016
- Phantom: SAM (20deg probe tilt) with CRP v5.0; Type: QD000P40CD;
- DASY52 52.8.7(1137); SEMCAD X 14.6.10(7164)

Configuration/System Check 1900MHz Head/ Area Scan (6x9x1): Measurement grid: $dx=15$ mm, $dy=15$ mm
Maximum value of SAR (measured) = 3.01 W/kg

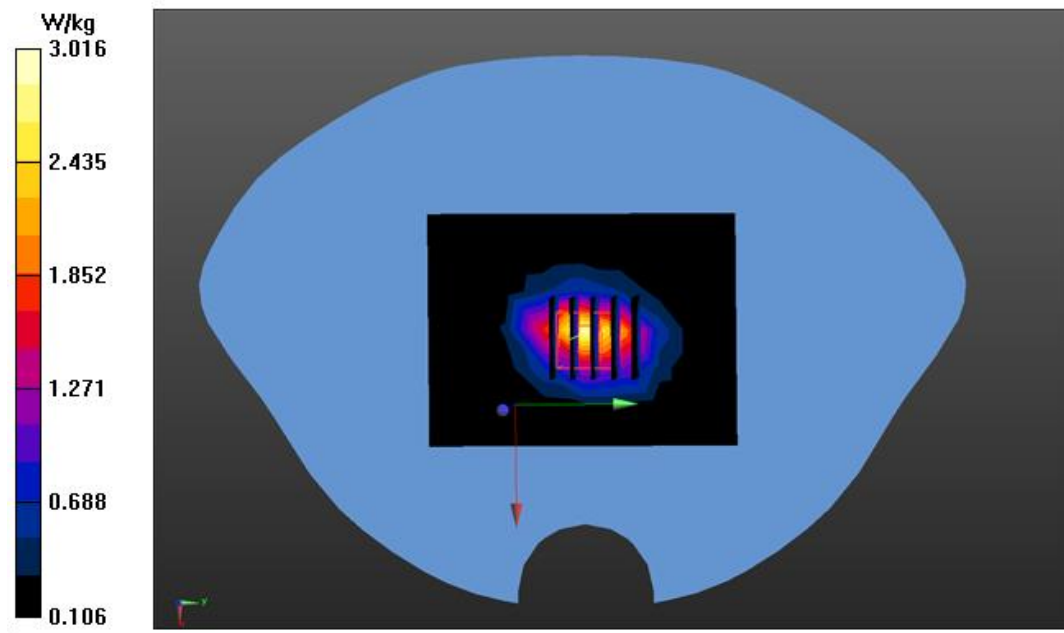
Configuration/System Check 1900MHz Head/Zoom Scan (5x5x7)/ Cube 0: Measurement grid: $dx=8$ mm, $dy=8$ mm, $dz=5$ mm

Reference Value = 43.763 V/m; Power Drift = -0.03 dB

Peak SAR (extrapolated) = 4.22 W/kg

SAR(1 g) = 2.46 W/kg; SAR(10 g) = 1.32 W/kg

Maximum value of SAR (measured) = 3.02 W/kg



Test Laboratory: AGC Lab
System Check Body 1900MHz
DUT: Dipole 1900 MHz; Type: SID 1900

Date: Apr. 24,2016

Communication System: CW; Communication System Band: D1900 (1900.0 MHz); Duty Cycle:1:1;
Frequency: 1900 MHz; Medium parameters used: $f = 1900$ MHz; $\sigma = 1.53$ mho/m; $\epsilon_r = 53.11$; $\rho = 1000$ kg/m³ ;
Phantom section: Flat Section; Input Power=18dBm
Ambient temperature (°C):22.0, Liquid temperature (°C): 21.9

DASY Configuration:

- Probe: ES3DV3 – SN3337; ConvF(4.83,4.83, 4.83); Calibrated:10/01/2015;
- Sensor-Surface: 3mm (Mechanical Surface Detection), $z = 1.0, 31.0$
- Electronics: DAE4 Sn1398; Calibrated: 02/02/2016
- Phantom: SAM (20deg probe tilt) with CRP v5.0; Type: QD000P40CD;
- DASY52 52.8.7(1137); SEMCAD X 14.6.10(7164)

Configuration/System Check 1900MHz Body/ Area Scan (6x9x1): Measurement grid: $dx=15$ mm, $dy=15$ mm
Maximum value of SAR (measured) = 3.12 W/kg

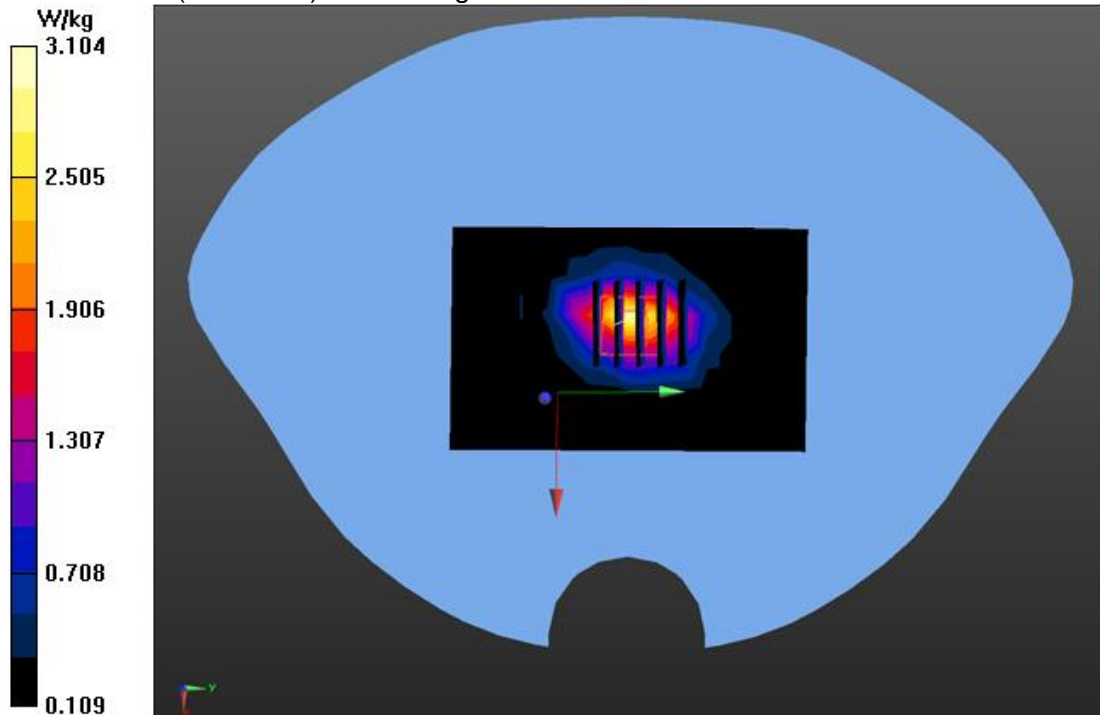
Configuration/System Check 1900MHz Body/Zoom Scan (5x5x7)/ Cube 0: Measurement grid: $dx=8$ mm, $dy=8$ mm, $dz=5$ mm

Reference Value = 44.120 V/m; Power Drift = 0.03 dB

Peak SAR (extrapolated) = 4.36 W/kg

SAR(1 g) = 2.50 W/kg; SAR(10 g) = 1.34 W/kg

Maximum value of SAR (measured) = 3.10 W/kg



Test Laboratory: AGC Lab
System Check Body 1900MHz
DUT: Dipole 1900 MHz; Type: SID 1900

Date: Apr. 14,2016

Communication System: CW; Communication System Band: D1900 (1900.0 MHz); Duty Cycle:1:1;
Frequency: 1900 MHz; Medium parameters used: $f = 1900$ MHz; $\sigma = 1.53$ mho/m; $\epsilon_r = 52.75$; $\rho = 1000$ kg/m³ ;
Phantom section: Flat Section; Input Power=18dBm
Ambient temperature (°C):22.4, Liquid temperature (°C): 22.3

DASY Configuration:

- Probe: ES3DV3 – SN3337; ConvF(4.83,4.83, 4.83); Calibrated:10/01/2015;
- Sensor-Surface: 3mm (Mechanical Surface Detection), $z = 1.0, 31.0$
- Electronics: DAE4 Sn1398; Calibrated: 02/02/2016
- Phantom: SAM (20deg probe tilt) with CRP v5.0; Type: QD000P40CD;
- DASY52 52.8.7(1137); SEMCAD X 14.6.10(7164)

Configuration/System Check 1900MHz Body/ Area Scan (6x9x1): Measurement grid: $dx=15$ mm, $dy=15$ mm
Maximum value of SAR (measured) = 3.05 W/kg

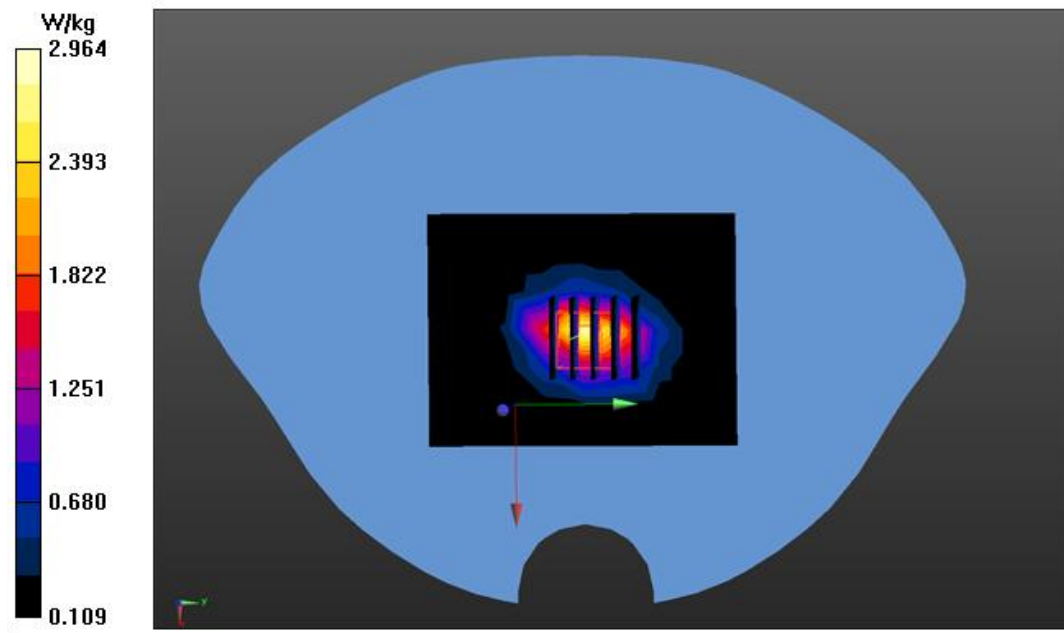
Configuration/System Check 1900MHz Body/Zoom Scan (5x5x7)/ Cube 0: Measurement grid: $dx=8$ mm, $dy=8$ mm, $dz=5$ mm

Reference Value = 41.774 V/m; Power Drift = 0.04 dB

Peak SAR (extrapolated) = 4.25 W/kg

SAR(1 g) = 2.40 W/kg; SAR(10 g) = 1.32 W/kg

Maximum value of SAR (measured) =2.96 W/kg



Test Laboratory: AGC Lab
System Check Head 2450 MHz
DUT: Dipole 2450 MHz Type: SID 2450

Date: Apr. 26,2016

Communication System: CW; Communication System Band: D2450 (2450.0 MHz); Duty Cycle: 1:1;
Frequency: 2450 MHz; Medium parameters used: $f = 2450$ MHz; $\sigma = 1.79$ mho/m; $\epsilon_r = 39.11$; $\rho = 1000$ kg/m³ ;
Phantom section: Flat Section; Input Power=18dBm
Ambient temperature (°C): 21.3, Liquid temperature (°C): 21.4

DASY Configuration:

- Probe: ES3DV3 – SN3337; ConvF(4.66,4.66, 4.66); Calibrated:10/01/2015
Sensor-Surface: 3mm (Mechanical Surface Detection), $z = 1.0, 31.0$
- Electronics: DAE4 Sn1398; Calibrated: 02/02/2016
- Phantom: SAM (20deg probe tilt) with CRP v5.0; Type: QD000P40CD;
- DASY52 52.8.7(1137); SEMCAD X 14.6.10(7164)

Configuration/System Check 2450MHz Head/ Area Scan (9x12x1): Measurement grid: $dx=10$ mm, $dy=10$ mm

Maximum value of SAR (measured) = 4.25 W/kg

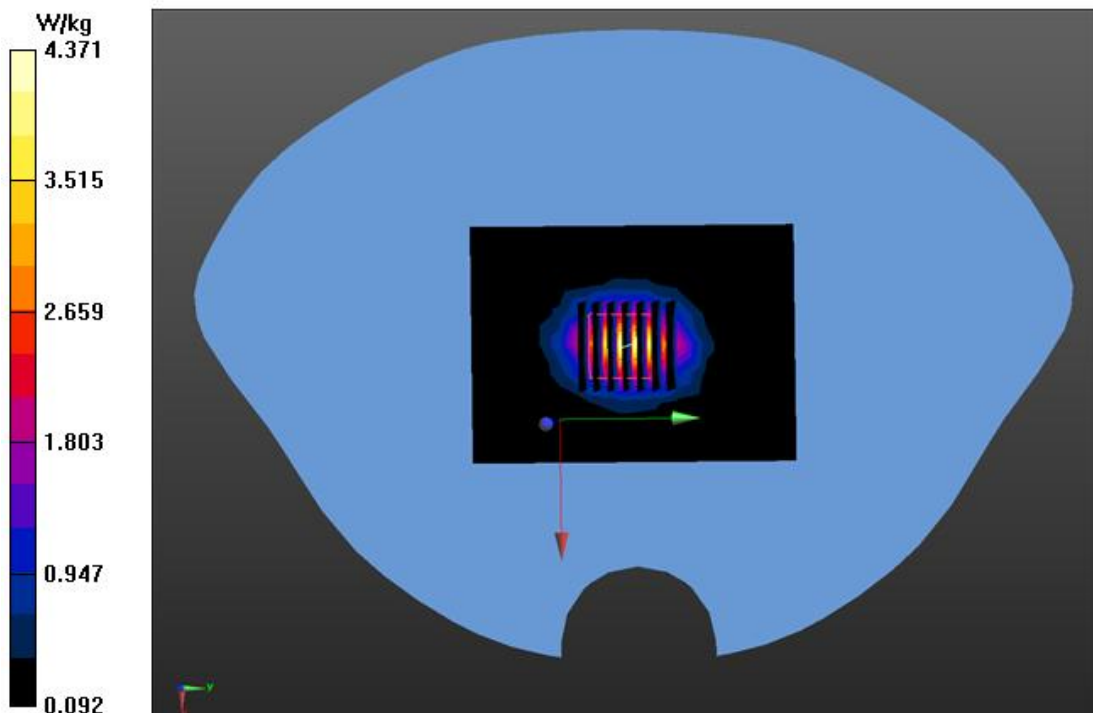
Configuration/System Check 2450MHz Head/ Zoom Scan (7x7x7)/Cube 0: Measurement grid: $dx=5$ mm, $dy=5$ mm, $dz=5$ mm

Reference Value = 50.030 V/m; Power Drift = 0.01 dB

Peak SAR (extrapolated) = 6.94 W/kg

SAR(1 g) = 3.30 W/kg; SAR(10 g) = 1.51 W/kg

Maximum value of SAR (measured) = 4.37 W/kg



Test Laboratory: AGC Lab
System Check Body 2450 MHz
DUT: Dipole 2450 MHz Type: SID 2450

Date: Apr. 26,2016

Communication System: CW; Communication System Band: D2450 (2450.0 MHz); Duty Cycle: 1:1;
Frequency: 2450 MHz; Medium parameters used: $f = 2450$ MHz; $\sigma = 1.93$ mho/m; $\epsilon_r = 52.66$; $\rho = 1000$ kg/m³ ;
Phantom section: Flat Section; Input Power=18dBm
Ambient temperature (°C): 21.3, Liquid temperature (°C): 21.1

DASY Configuration:

- Probe: ES3DV3 – SN3337; ConvF(4.36,4.36, 4.36); Calibrated:10/01/2015
- Sensor-Surface: 3mm (Mechanical Surface Detection), $z = 1.0$, 31.0
- Electronics: DAE4 Sn1398; Calibrated: 02/02/2016
- Phantom: SAM (20deg probe tilt) with CRP v5.0; Type: QD000P40CD;
- DASY52 52.8.7(1137); SEMCAD X 14.6.10(7164)

Configuration/System Check 2450MHz Body/ Area Scan (9x12x1): Measurement grid: $dx=10$ mm, $dy=10$ mm

Maximum value of SAR (measured) = 4.20 W/kg

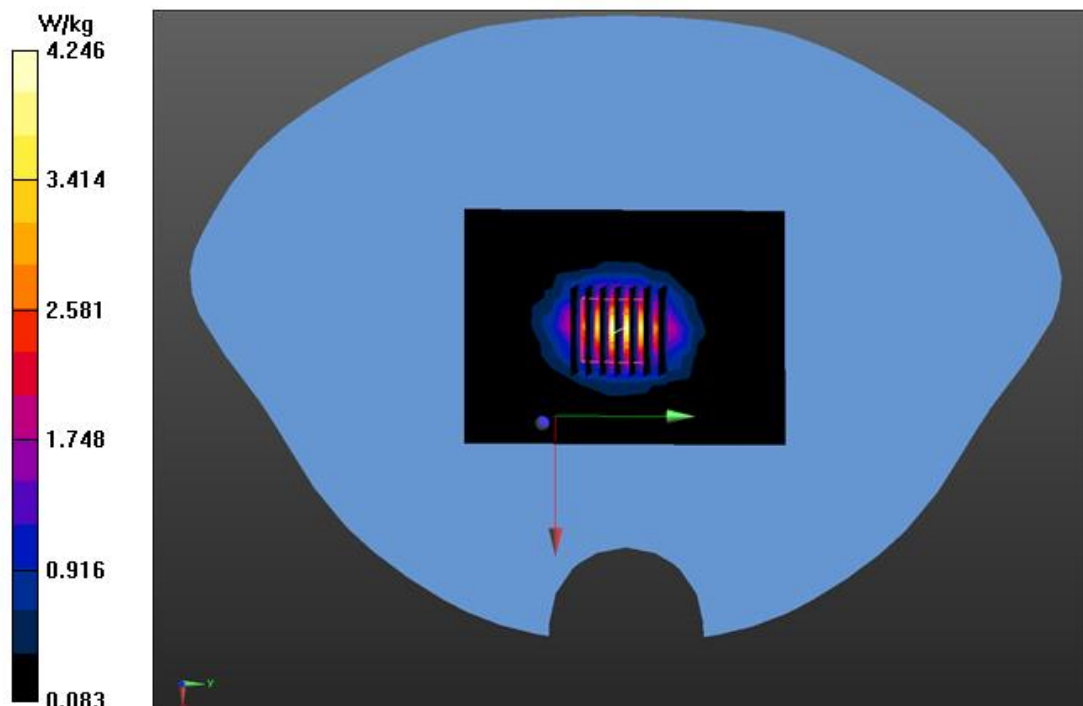
Configuration/System Check 2450MHz Body/ Zoom Scan (7x7x7)/Cube 0: Measurement grid: $dx=5$ mm, $dy=5$ mm, $dz=5$ mm

Reference Value = 51.457 V/m; Power Drift = -0.07 dB

Peak SAR (extrapolated) = 6.87 W/kg

SAR(1 g) = 3.24 W/kg; SAR(10 g) = 1.47 W/kg

Maximum value of SAR (measured) = 4.25 W/kg



Test Laboratory: AGC Lab
System Check Body 2450 MHz
DUT: Dipole 2450 MHz Type: SID 2450

Date: Apr. 09,2016

Communication System: CW; Communication System Band: D2450 (2450.0 MHz); Duty Cycle: 1:1;
Frequency: 2450 MHz; Medium parameters used: $f = 2450$ MHz; $\sigma = 1.93$ mho/m; $\epsilon_r = 52.00$; $\rho = 1000$ kg/m³ ;
Phantom section: Flat Section; Input Power=18dBm
Ambient temperature (°C): 22.3, Liquid temperature (°C): 22.2

DASY Configuration:

- Probe: ES3DV3 – SN3337; ConvF(4.36,4.36, 4.36); Calibrated:10/01/2015
- Sensor-Surface: 3mm (Mechanical Surface Detection), $z = 1.0$, 31.0
- Electronics: DAE4 Sn1398; Calibrated: 02/02/2016
- Phantom: SAM (20deg probe tilt) with CRP v5.0; Type: QD000P40CD;
- DASY52 52.8.7(1137); SEMCAD X 14.6.10(7164)

Configuration/System Check 2450MHz Body / Area Scan (5x7x1): Measurement grid: $dx=15$ mm, $dy=15$ mm
Maximum value of SAR (measured) = 4.38 W/kg

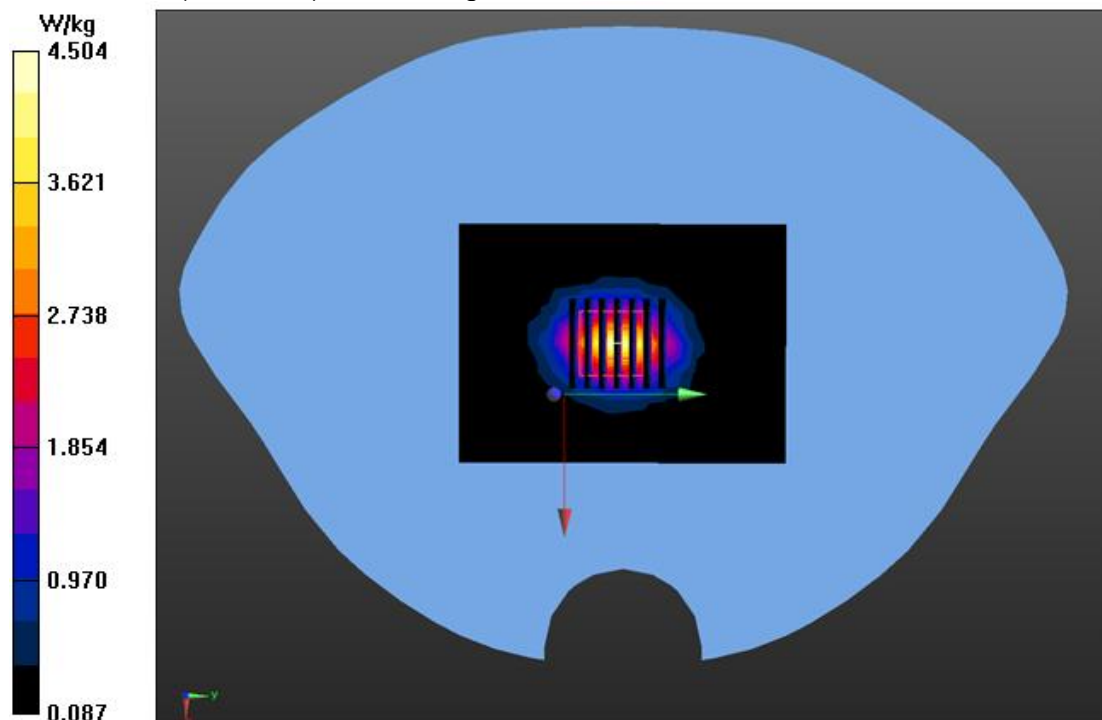
Configuration/System Check 2450MHz Body/ Zoom Scan (7x7x7)/Cube 0: Measurement grid: $dx=5$ mm, $dy=5$ mm, $dz=5$ mm

Reference Value = 50.768 V/m; Power Drift = -0.04 dB

Peak SAR (extrapolated) = 7.18 W/kg

SAR(1 g) = 3.41 W/kg; SAR(10 g) = 1.56 W/kg

Maximum value of SAR (measured) = 4.50 W/kg



APPENDIX B. SAR MEASUREMENT DATA

Test Laboratory: AGC Lab
GSM 850 Mid-Touch-Left <SIM 1>
DUT: Smart Phone; Type: G31

Date: Apr. 25, 2016

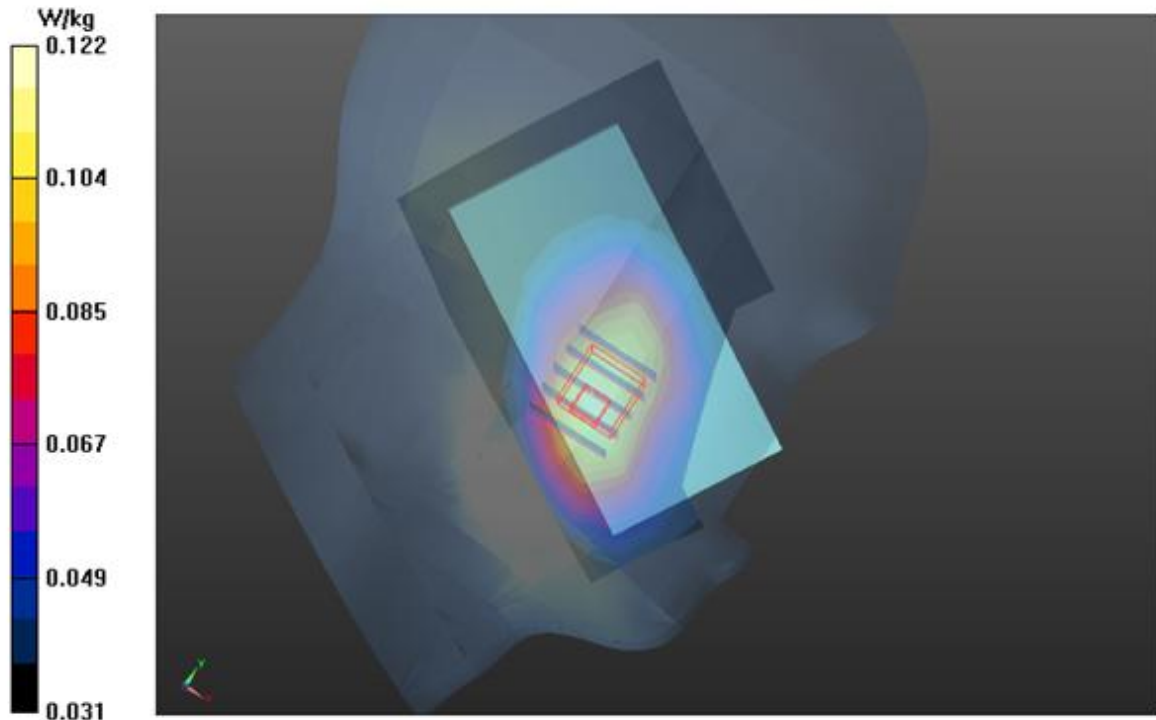
Communication System: UID 0, Generic GSM (0); Communication System Band: GSM 850; Duty Cycle: 1:8.3;
Frequency: 836.6 MHz; Medium parameters used: $f = 835$ MHz; $\sigma = 0.89$ mho/m; $\epsilon_r = 42.10$; $\rho = 1000$ kg/m³;
Phantom section: Left Section
Ambient temperature (°C): 21.3, Liquid temperature (°C): 21.2

DASY Configuration:

- Probe: ES3DV3 – SN3337; ConvF(6.32, 6.32, 6.32); Calibrated: 10/01/2015;
- Sensor-Surface: 3mm (Mechanical Surface Detection), $z = 1.0, 31.0$
- Electronics: DAE4 Sn1398; Calibrated: 02/02/2016
- Phantom: SAM (20deg probe tilt) with CRP v5.0; Type: QD000P40CD;
- DASY52 52.8.7(1137); SEMCAD X 14.6.10(7164)

LEFT HEAD/L-C/Area Scan (8x11x1): Measurement grid: $dx=15$ mm, $dy=15$ mm
Maximum value of SAR (measured) = 0.120 W/kg

LEFT HEAD/L-C/Zoom Scan (5x5x7)/Cube 0: Measurement grid: $dx=8$ mm, $dy=8$ mm, $dz=5$ mm
Reference Value = 4.720 V/m; Power Drift = -0.05 dB
Peak SAR (extrapolated) = 0.145 W/kg
SAR(1 g) = 0.111 W/kg; SAR(10 g) = 0.083 W/kg
Maximum value of SAR (measured) = 0.122 W/kg



Test Laboratory: AGC Lab
GPRS 850 Mid-Touch-Left (4up) <SIM 1>
DUT: Smart Phone; Type: G31

Date: Apr. 25,2016

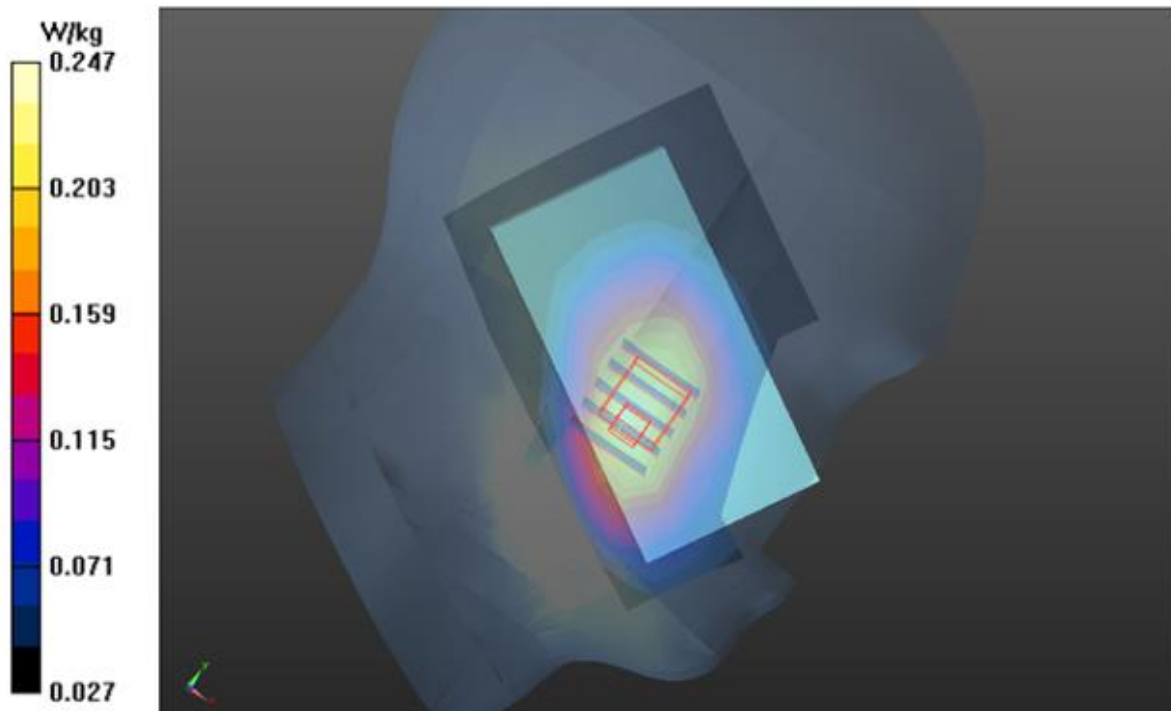
Communication System: : GPRS-4 Slot; Communication System Band: GSM 850; Duty Cycle: 1:2.1;
Frequency: 836.6 MHz; Medium parameters used: $f = 835$ MHz; $\sigma = 0.89$ mho/m; $\epsilon_r = 42.10$; $\rho = 1000$ kg/m³ ;
Phantom section: Left Section
Ambient temperature (°C): 21.3, Liquid temperature (°C): 21.2

DASY Configuration:

- Probe: ES3DV3 – SN3337; ConvF(6.32, 6.32, 6.32); Calibrated:10/01/2015;
- Sensor-Surface: 3mm (Mechanical Surface Detection), $z = 1.0, 31.0$
- Electronics: DAE4 Sn1398; Calibrated: 02/02/2016
- Phantom: SAM (20deg probe tilt) with CRP v5.0; Type: QD000P40CD;
- DASY52 52.8.7(1137); SEMCAD X 14.6.10(7164)

LEFT HEAD/4ST-L-C/Area Scan (8x11x1): Measurement grid: $dx=15$ mm, $dy=15$ mm
Maximum value of SAR (measured) = 0.244 W/kg

LEFT HEAD/4ST-L-C/Zoom Scan (5x5x7)/Cube 0: Measurement grid: $dx=8$ mm, $dy=8$ mm, $dz=5$ mm
Reference Value = 7.938 V/m; Power Drift = -0.14 dB
Peak SAR (extrapolated) = 0.285 W/kg
SAR(1 g) = 0.201 W/kg; SAR(10 g) = 0.143 W/kg
Maximum value of SAR (measured) = 0.247 W/kg



Test Laboratory: AGC Lab
GPRS 850 Mid-Touch-Left (4up) <SIM 2>
DUT: Smart Phone; Type: G31

Date: Apr. 25,2016

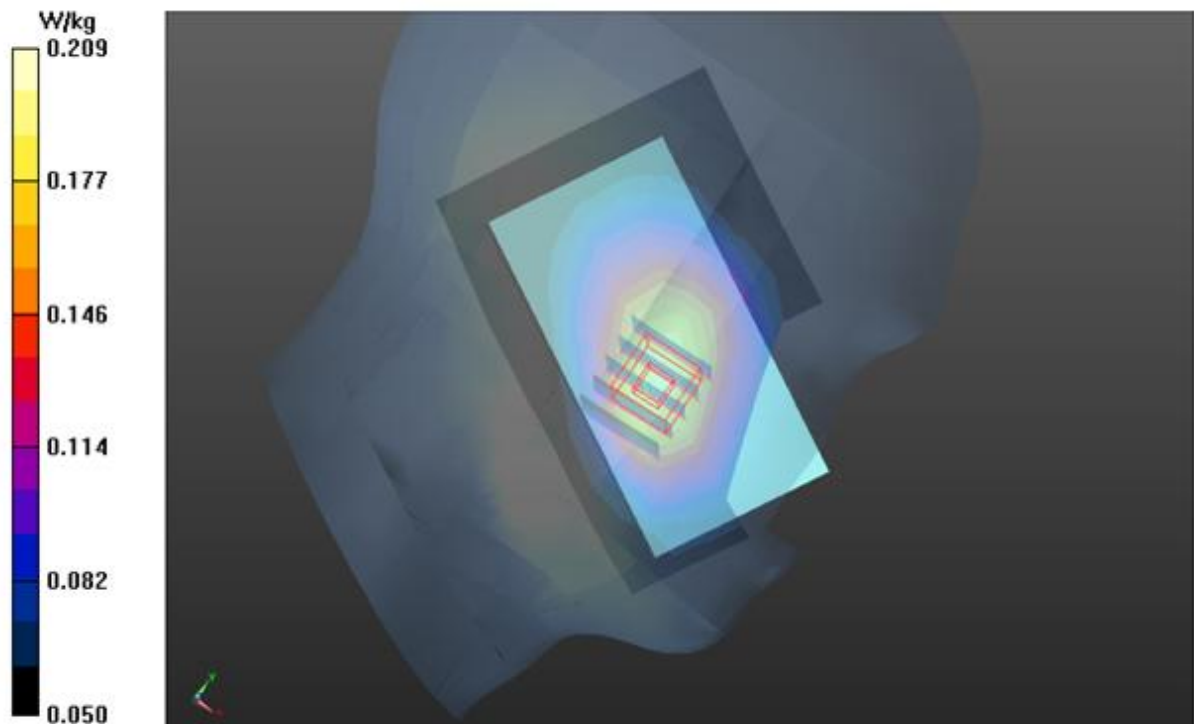
Communication System: : GPRS-4 Slot; Communication System Band: GSM 850; Duty Cycle: 1:2.1;
Frequency: 836.6 MHz; Medium parameters used: $f = 835$ MHz; $\sigma = 0.89$ mho/m; $\epsilon_r = 42.10$; $\rho = 1000$ kg/m³ ;
Phantom section: Left Section
Ambient temperature (°C): 21.3, Liquid temperature (°C): 21.2

DASY Configuration:

- Probe: ES3DV3 – SN3337; ConvF(6.32, 6.32, 6.32); Calibrated:10/01/2015;
- Sensor-Surface: 3mm (Mechanical Surface Detection), $z = 1.0, 31.0$
- Electronics: DAE4 Sn1398; Calibrated: 02/02/2016
- Phantom: SAM (20deg probe tilt) with CRP v5.0; Type: QD000P40CD;
- DASY52 52.8.7(1137); SEMCAD X 14.6.10(7164)

LEFT HEAD/4ST-L-C 2/Area Scan (8x11x1): Measurement grid: $dx=15$ mm, $dy=15$ mm
Maximum value of SAR (measured) = 0.208 W/kg

LEFT HEAD/4ST-L-C 2/Zoom Scan (5x5x7)/Cube 0: Measurement grid: $dx=8$ mm, $dy=8$ mm, $dz=5$ mm
Reference Value = 8.103 V/m; Power Drift = -0.00 dB
Peak SAR (extrapolated) = 0.234 W/kg
SAR(1 g) = 0.192 W/kg; SAR(10 g) = 0.149 W/kg
Maximum value of SAR (measured) = 0.209 W/kg



Test Laboratory: AGC Lab
GSM 850 Mid- Body- Back(MS)<SIM 1>
DUT: Smart Phone; Type: G31

Date: Apr. 26,2016

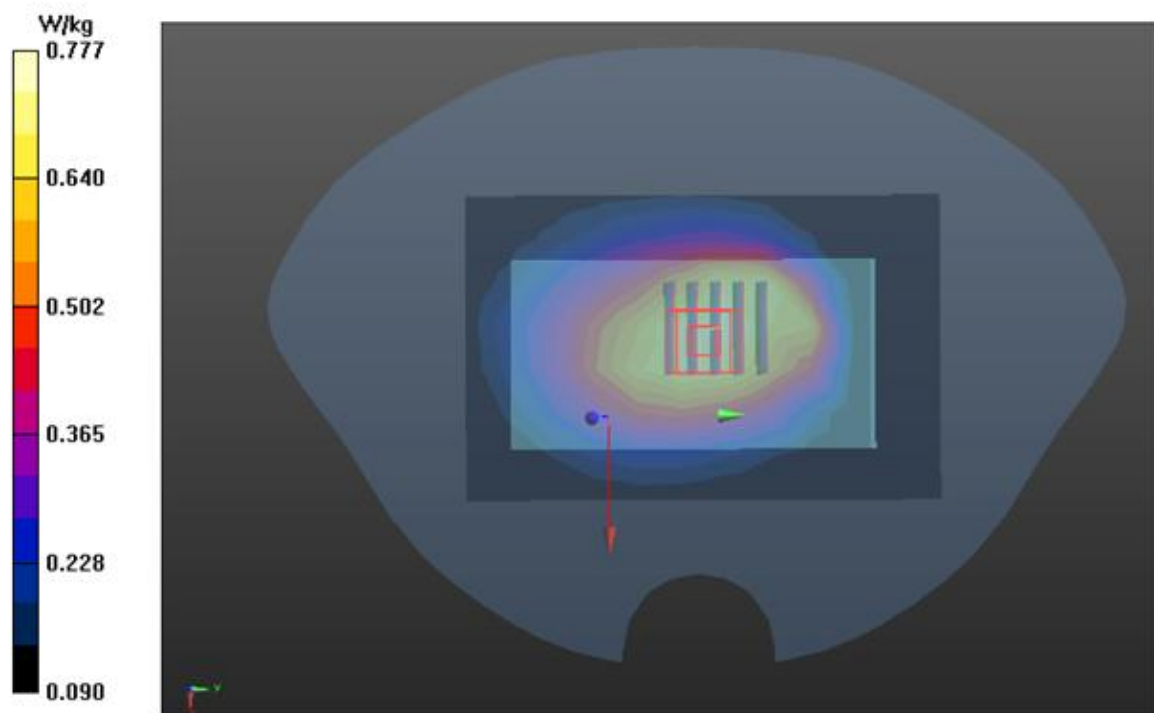
Communication System: UID 0, Generic GSM (0); Communication System Band: GSM 850; Duty Cycle: 1:8.3;
Frequency: 836.6 MHz; Medium parameters used: $f = 835$ MHz; $\sigma = 0.95$ mho/m; $\epsilon_r = 55.99$; $\rho = 1000$ kg/m³ ;
Phantom section: Flat Section
Ambient temperature (°C): 21.3, Liquid temperature (°C): 21.9

DASY Configuration:

- Probe: ES3DV3 – SN3337; ConvF(6.31, 6.31, 6.31); Calibrated:10/01/2015;
- Sensor-Surface: 3mm (Mechanical Surface Detection), $z = 1.0, 31.0$
- Electronics: DAE4 Sn1398; Calibrated: 02/02/2016
- Phantom: SAM (20deg probe tilt) with CRP v5.0; Type: QDOVA002AA;
- DASY52 52.8.7(1137); SEMCAD X 14.6.10(7164)

BODY/BACK/Area Scan (8x12x1): Measurement grid: $dx=15$ mm, $dy=15$ mm
Maximum value of SAR (measured) = 0.770 W/kg

BODY/BACK/Zoom Scan (5x5x7)/Cube 0: Measurement grid: $dx=8$ mm, $dy=8$ mm, $dz=5$ mm
Reference Value = 19.507 V/m; Power Drift = 0.00 dB
Peak SAR (extrapolated) = 0.910 W/kg
SAR(1 g) = 0.697 W/kg; SAR(10 g) = 0.512 W/kg
Maximum value of SAR (measured) = 0.777 W/kg



Test Laboratory: AGC Lab
GPRS 850 Mid- Body- Back (4up) < SIM 1>
DUT: Smart Phone; Type: G31

Date: Apr. 26,2016

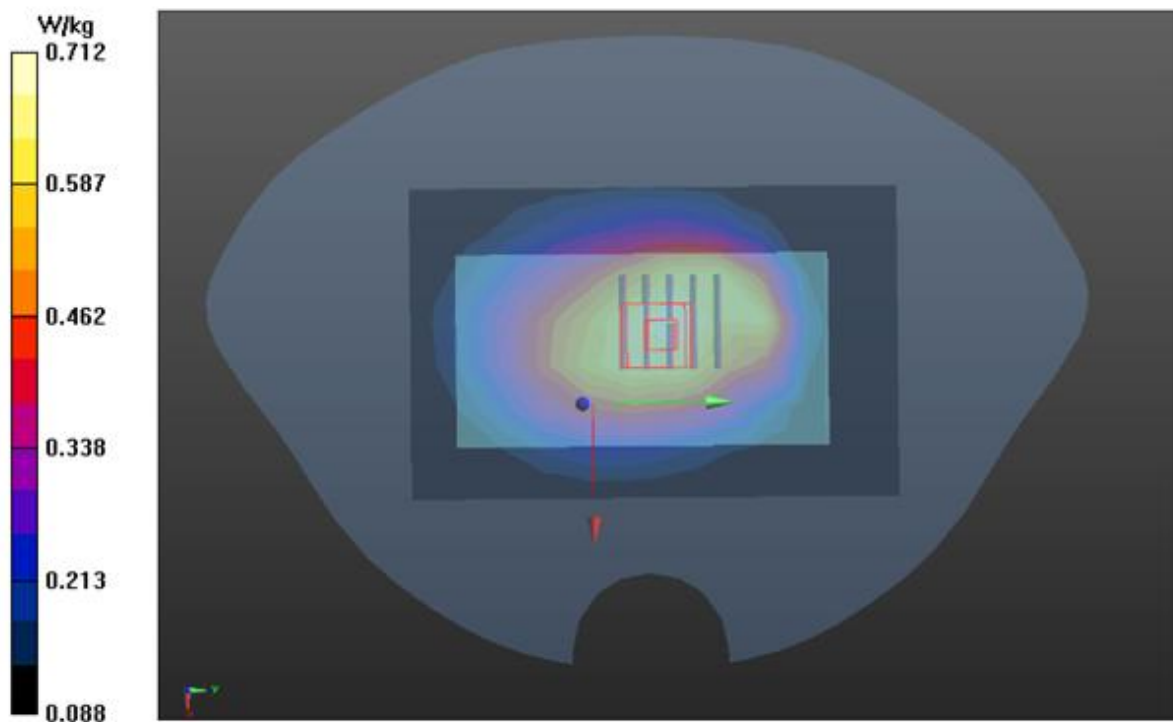
Communication System: GPRS-4 Slot; Communication System Band: GSM 850; Duty Cycle: 1:2.1;
Frequency: 836.6 MHz; Medium parameters used: $f = 835$ MHz; $\sigma = 0.95$ mho/m; $\epsilon_r = 55.99$; $\rho = 1000$ kg/m³ ;
Phantom section: Flat Section
Ambient temperature (°C): 21.3, Liquid temperature (°C): 21.9

DASY Configuration:

- Probe: ES3DV3 – SN3337; ConvF(6.31, 6.31, 6.31); Calibrated:10/01/2015;
- Sensor-Surface: 3mm (Mechanical Surface Detection), $z = 1.0, 31.0$
- Electronics: DAE4 Sn1398; Calibrated: 02/02/2016
- Phantom: SAM (20deg probe tilt) with CRP v5.0; Type: QDOVA002AA;
- DASY52 52.8.7(1137); SEMCAD X 14.6.10(7164)

BODY/4ST-BACK/Area Scan (8x12x1): Measurement grid: $dx=15$ mm, $dy=15$ mm
Maximum value of SAR (measured) = 0.711 W/kg

BODY/4ST-BACK/Zoom Scan (5x5x7)/Cube 0: Measurement grid: $dx=8$ mm, $dy=8$ mm, $dz=5$ mm
Reference Value = 18.458 V/m; Power Drift = -0.04 dB
Peak SAR (extrapolated) = 0.832 W/kg
SAR(1 g) = 0.639 W/kg; SAR(10 g) = 0.470 W/kg
Maximum value of SAR (measured) = 0.712 W/kg



Test Laboratory: AGC Lab
GSM 850 Mid- Body- Back(MS)<SIM 2>
DUT: Smart Phone; Type: G31

Date: Apr. 26,2016

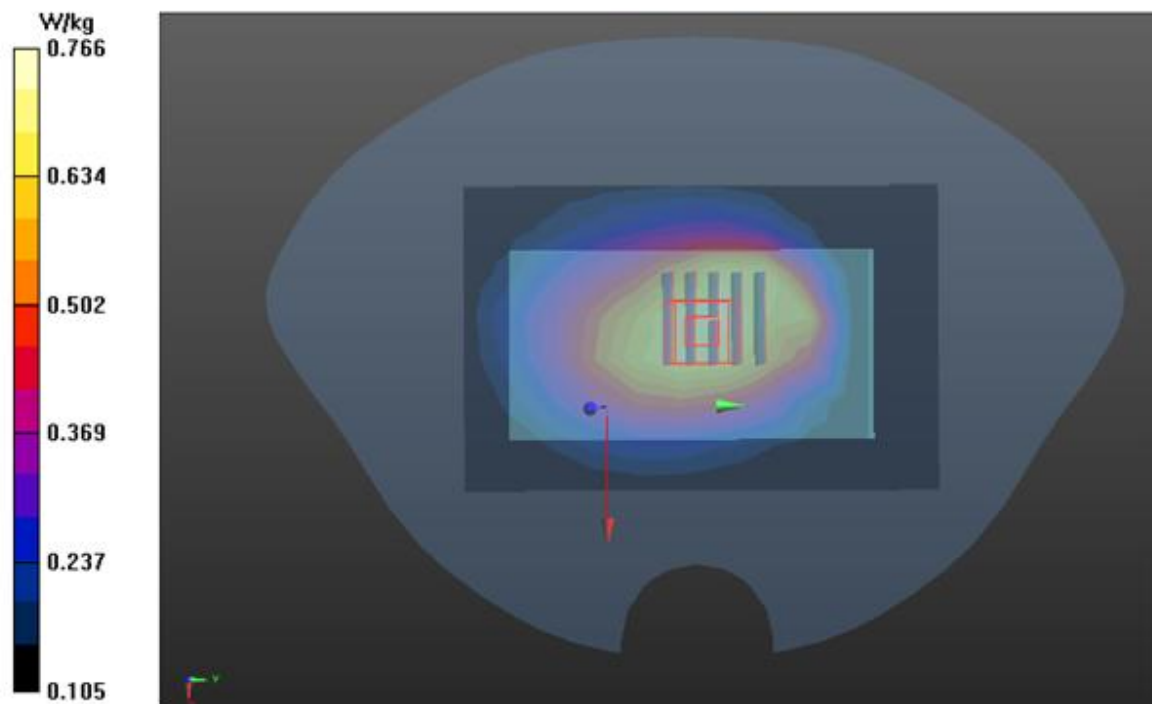
Communication System: UID 0, Generic GSM (0); Communication System Band: GSM 850; Duty Cycle: 1:8.3;
Frequency: 836.6 MHz; Medium parameters used: $f = 835$ MHz; $\sigma = 0.95$ mho/m; $\epsilon_r = 55.99$; $\rho = 1000$ kg/m³ ;
Phantom section: Flat Section
Ambient temperature (°C): 21.3, Liquid temperature (°C): 21.9

DASY Configuration:

- Probe: ES3DV3 – SN3337; ConvF(6.31, 6.31, 6.31); Calibrated:10/01/2015;
- Sensor-Surface: 3mm (Mechanical Surface Detection), $z = 1.0, 31.0$
- Electronics: DAE4 Sn1398; Calibrated: 02/02/2016
- Phantom: SAM (20deg probe tilt) with CRP v5.0; Type: QDOVA002AA;
- DASY52 52.8.7(1137); SEMCAD X 14.6.10(7164)

BODY/BACK 2/Area Scan (8x12x1): Measurement grid: $dx=15$ mm, $dy=15$ mm
Maximum value of SAR (measured) = 0.768 W/kg

BODY/BACK 2/Zoom Scan (5x5x7)/Cube 0: Measurement grid: $dx=8$ mm, $dy=8$ mm, $dz=5$ mm
Reference Value = 19.381 V/m; Power Drift = 0.00 dB
Peak SAR (extrapolated) = 0.902 W/kg
SAR(1 g) = 0.687 W/kg; SAR(10 g) = 0.505 W/kg
Maximum value of SAR (measured) = 0.766 W/kg



Test Laboratory: AGC Lab
PCS 1900 Mid-Touch-Left <SIM 1>
DUT: Smart Phone; Type: G31

Date: Apr. 23,2016

Communication System: UID 0, Generic GSM (0); Communication System Band: PCS 1900; Duty Cycle: 1:8.3;
Frequency: 1880 MHz; Medium parameters used: $f = 1900$ MHz; $\sigma = 1.40$ mho/m; $\epsilon_r = 40.83$; $\rho = 1000$ kg/m³ ;
Phantom section: Left Section
Ambient temperature (°C):22.0, Liquid temperature (°C): 21.7

DASY Configuration:

- Probe: ES3DV3 – SN3337; ConvF(5.23, 5.23, 5.23); Calibrated:10/01/2015;
- Sensor-Surface: 3mm (Mechanical Surface Detection), $z = 1.0, 31.0$
- Electronics: DAE4 Sn1398; Calibrated: 02/02/2016
- Phantom: SAM (20deg probe tilt) with CRP v5.0; Type: QD000P40CD;
- DASY52 52.8.7(1137); SEMCAD X 14.6.10(7164)

LEFT HEAD/L-C/Area Scan (8x11x1): Measurement grid: $dx=15$ mm, $dy=15$ mm
Maximum value of SAR (measured) = 1.42 W/kg

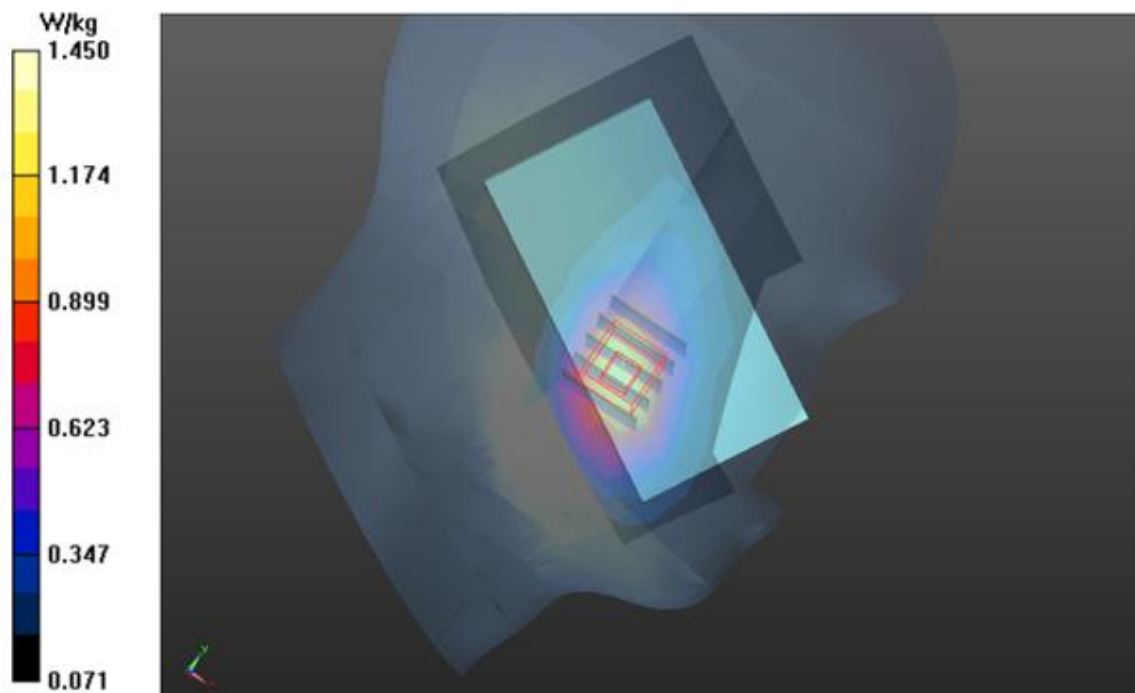
LEFT HEAD/L-C/Zoom Scan (5x5x7)/Cube 0: Measurement grid: $dx=8$ mm, $dy=8$ mm, $dz=5$ mm

Reference Value = 25.807 V/m; Power Drift = -0.08 dB

Peak SAR (extrapolated) = 2.03 W/kg

SAR(1 g) = 1.10 W/kg; SAR(10 g) = 0.585 W/kg

Maximum value of SAR (measured) = 1.45 W/kg



Test Laboratory: AGC Lab
GPRS 1900 Mid-Touch-Left (4up) < SIM 1>
DUT: Smart Phone; Type: G31

Date: Apr. 23,2016

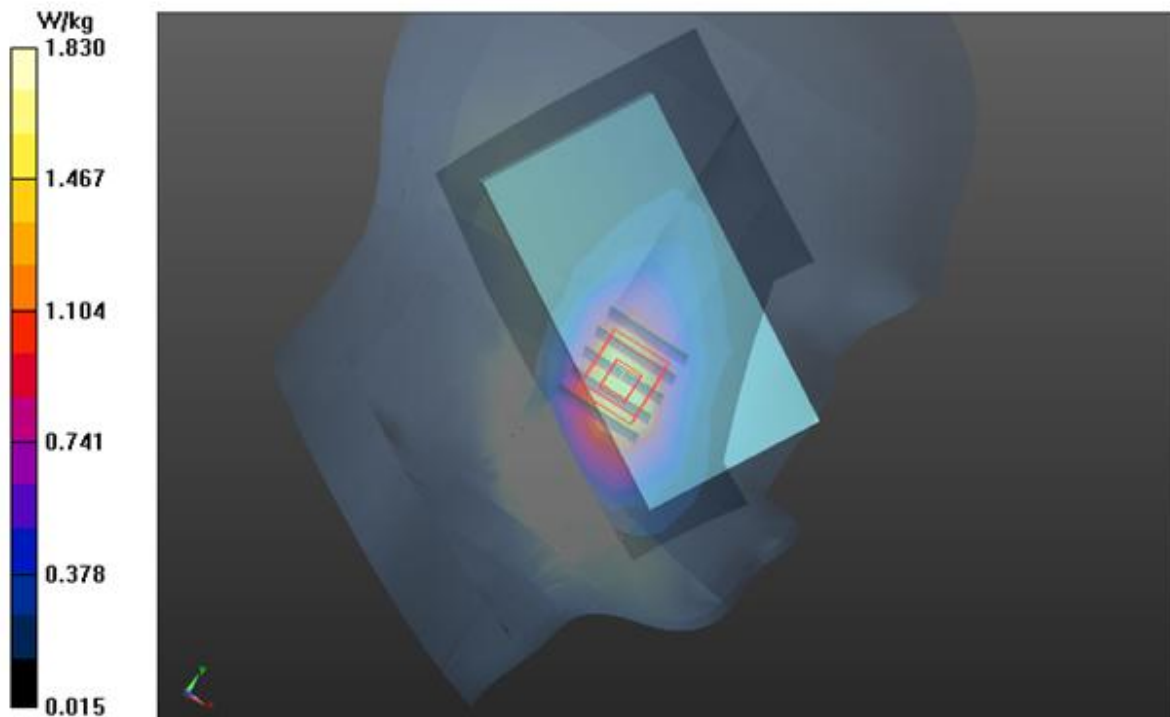
Communication System: GPRS-4 Slot; Communication System Band: PCS 1900; Duty Cycle: 1:2.1;
Frequency: 1880 MHz; Medium parameters used: $f = 1900$ MHz; $\sigma = 1.40$ mho/m; $\epsilon_r = 40.83$; $\rho = 1000$ kg/m³ ;
Phantom section: Left Section
Ambient temperature (°C):22.0, Liquid temperature (°C): 21.7

DASY Configuration:

- Probe: ES3DV3 – SN3337; ConvF(5.23, 5.23, 5.23); Calibrated:10/01/2015;
- Sensor-Surface: 3mm (Mechanical Surface Detection), $z = 1.0, 31.0$
- Electronics: DAE4 Sn1398; Calibrated: 02/02/2016
- Phantom: SAM (20deg probe tilt) with CRP v5.0; Type: QD000P40CD;
- DASY52 52.8.7(1137); SEMCAD X 14.6.10(7164)

LEFT HEAD/4ST-L-C/Area Scan (8x11x1): Measurement grid: $dx=15$ mm, $dy=15$ mm
Maximum value of SAR (measured) = 1.66 W/kg

LEFT HEAD/4ST-L-C/Zoom Scan (5x5x7)/Cube 0: Measurement grid: $dx=8$ mm, $dy=8$ mm, $dz=5$ mm
Reference Value = 24.353 V/m; Power Drift = -0.15 dB
Peak SAR (extrapolated) = 2.53 W/kg
SAR(1 g) = 1.19 W/kg; SAR(10 g) = 0.707 W/kg
Maximum value of SAR (measured) = 1.83 W/kg



Test Laboratory: AGC Lab
GPRS 1900 Mid-Touch-Left (4up) < SIM 2>
DUT: Smart Phone; Type: G31

Date: Apr. 23,2016

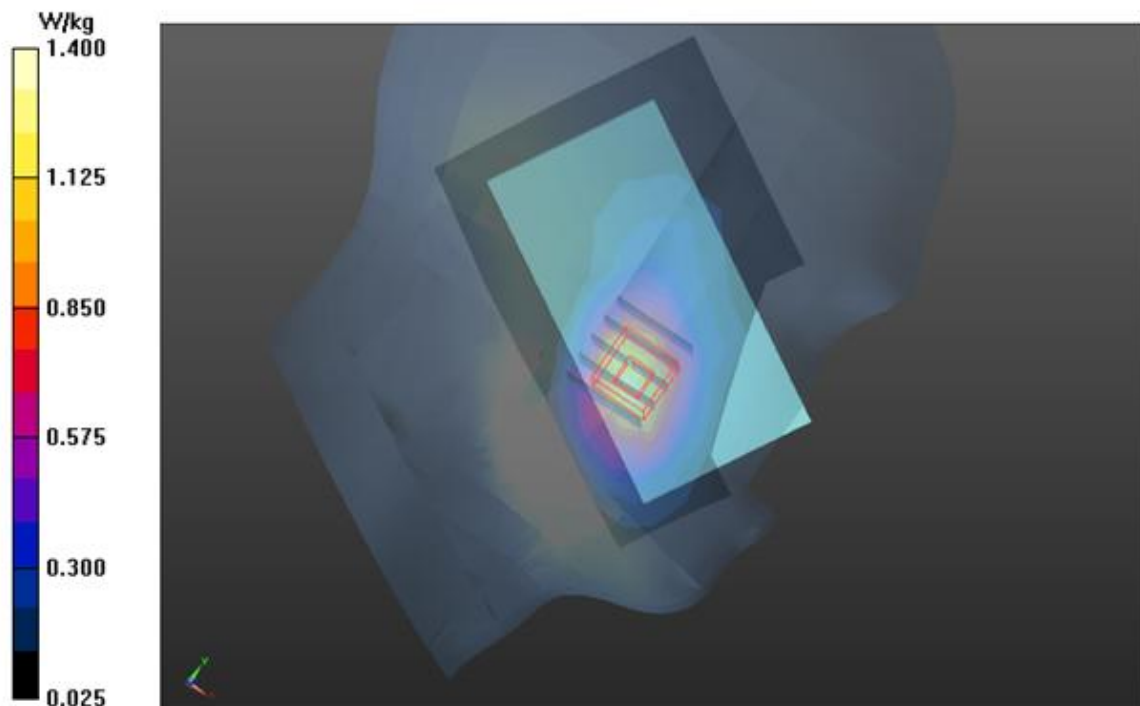
Communication System: GPRS-4 Slot; Communication System Band: PCS 1900; Duty Cycle: 1:2.1;
Frequency: 1880 MHz; Medium parameters used: $f = 1900$ MHz; $\sigma = 1.40$ mho/m; $\epsilon_r = 40.83$; $\rho = 1000$ kg/m³ ;
Phantom section: Left Section
Ambient temperature (°C):22.0, Liquid temperature (°C): 21.7

DASY Configuration:

- Probe: ES3DV3 – SN3337; ConvF(5.23, 5.23, 5.23); Calibrated:10/01/2015;
- Sensor-Surface: 3mm (Mechanical Surface Detection), $z = 1.0, 31.0$
- Electronics: DAE4 Sn1398; Calibrated: 02/02/2016
- Phantom: SAM (20deg probe tilt) with CRP v5.0; Type: QD000P40CD;
- DASY52 52.8.7(1137); SEMCAD X 14.6.10(7164)

LEFT HEAD/4ST-L-C 2/Area Scan (8x11x1): Measurement grid: $dx=15$ mm, $dy=15$ mm
Maximum value of SAR (measured) = 1.38 W/kg

LEFT HEAD/4ST-L-C 2/Zoom Scan (5x5x7)/Cube 0: Measurement grid: $dx=8$ mm, $dy=8$ mm, $dz=5$ mm
Reference Value = 37.483 V/m; Power Drift = 0.05 dB
Peak SAR (extrapolated) = 1.89 W/kg
SAR(1 g) = 1.09 W/kg; SAR(10 g) = 0.655 W/kg
Maximum value of SAR (measured) = 1.40 W/kg



Test Laboratory: AGC Lab
PCS 1900 Mid-Body- Back(MS)<SIM 1>
DUT: Smart Phone; Type: G31

Date: Apr. 24,2016

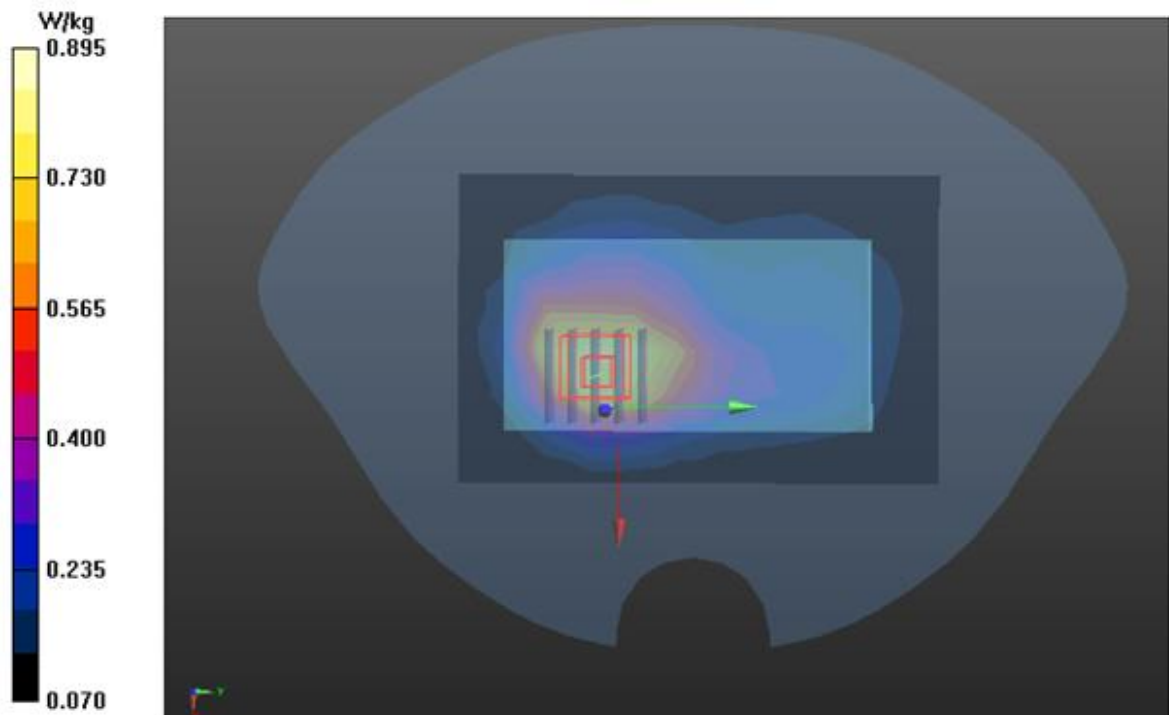
Communication System: UID 0, Generic GSM (0); Communication System Band: PCS 1900; Duty Cycle: 1:8.3;
Frequency: 1880 MHz; Medium parameters used: $f = 1900$ MHz; $\sigma = 1.53$ mho/m; $\epsilon_r = 53.11$; $\rho = 1000$ kg/m³ ;
Phantom section: Flat Section
Ambient temperature (°C):22.0, Liquid temperature (°C): 21.9

DASY Configuration:

- Probe: ES3DV3 – SN3337; ConvF(4.83,4.83, 4.83); Calibrated:10/01/2015;
- Sensor-Surface: 3mm (Mechanical Surface Detection), $z = 1.0, 31.0$
- Electronics: DAE4 Sn1398; Calibrated: 02/02/2016
- Phantom: SAM (20deg probe tilt) with CRP v5.0; Type: QD000P40CD;
- DASY52 52.8.7(1137); SEMCAD X 14.6.10(7164)

BODY/BACK/Area Scan (8x12x1): Measurement grid: $dx=15$ mm, $dy=15$ mm
Maximum value of SAR (measured) = 0.898 W/kg

BODY/BACK/Zoom Scan (5x5x7)/Cube 0: Measurement grid: $dx=8$ mm, $dy=8$ mm, $dz=5$ mm
Reference Value = 25.655 V/m; Power Drift = -0.07 dB
Peak SAR (extrapolated) = 1.03 W/kg
SAR(1 g) = 0.750 W/kg; SAR(10 g) = 0.512 W/kg
Maximum value of SAR (measured) = 0.895 W/kg



Test Laboratory: AGC Lab
GPRS 1900 High-Body- Back (4up) < SIM 1>
DUT: Smart Phone; Type: G31

Date: Apr. 24,2016

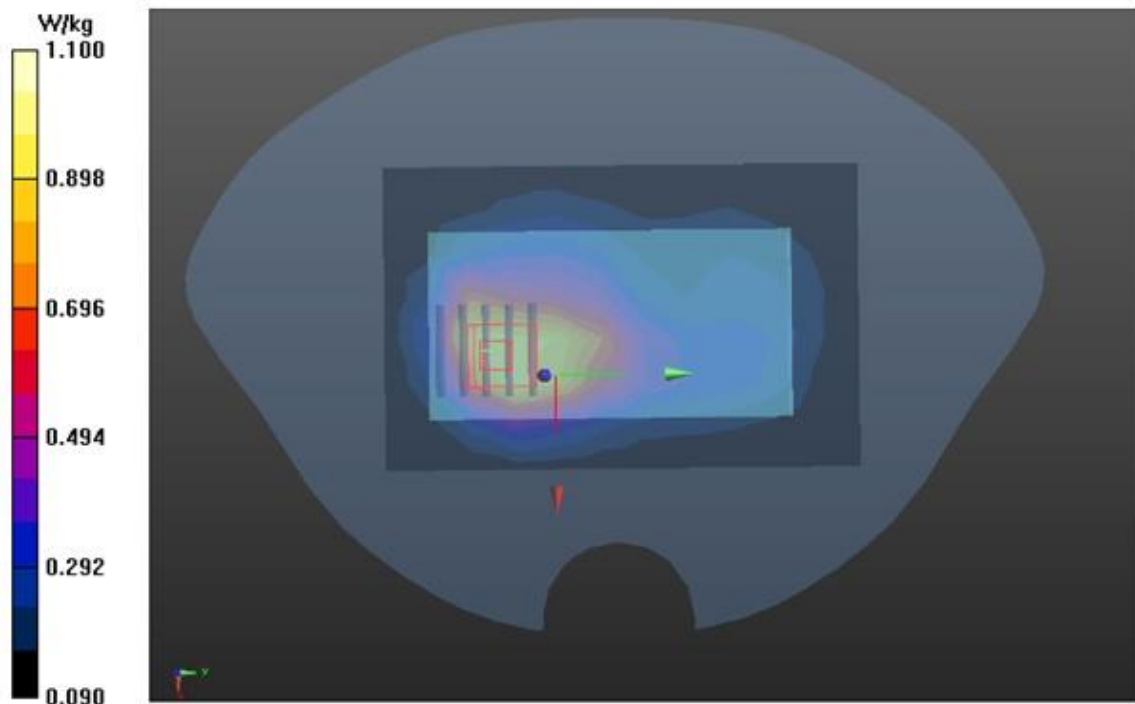
Communication System: GPRS-4 Slot; Communication System Band: PCS 1900; Duty Cycle: 1:2.1;
Frequency: 1909.8MHz; Medium parameters used: $f = 1900$ MHz; $\sigma = 1.53$ mho/m; $\epsilon_r = 53.11$; $\rho = 1000$ kg/m³ ;
Phantom section: Flat Section
Ambient temperature (°C):22.0, Liquid temperature (°C): 21.9

DASY Configuration:

- Probe: ES3DV3 – SN3337; ConvF(4.83,4.83, 4.83); Calibrated:10/01/2015;
- Sensor-Surface: 3mm (Mechanical Surface Detection), $z = 1.0, 31.0$
- Electronics: DAE4 Sn1398; Calibrated: 02/02/2016
- Phantom: SAM (20deg probe tilt) with CRP v5.0; Type: QD000P40CD;
- DASY52 52.8.7(1137); SEMCAD X 14.6.10(7164)

BODY/4ST-BACK-H/Area Scan (8x12x1): Measurement grid: $dx=15$ mm, $dy=15$ mm
Maximum value of SAR (measured) = 1.08 W/kg

BODY/4ST-BACK-H/Zoom Scan (5x5x7)/Cube 0: Measurement grid: $dx=8$ mm, $dy=8$ mm, $dz=5$ mm
Reference Value = 28.536 V/m; Power Drift = -0.03 dB
Peak SAR (extrapolated) = 1.26 W/kg
SAR(1 g) = 0.901 W/kg; SAR(10 g) = 0.620 W/kg
Maximum value of SAR (measured) = 1.10 W/kg



Test Laboratory: AGC Lab
GPRS 1900 High-Body- Back (4up) < SIM 2>
DUT: Smart Phone; Type: G31

Date: Apr. 24,2016

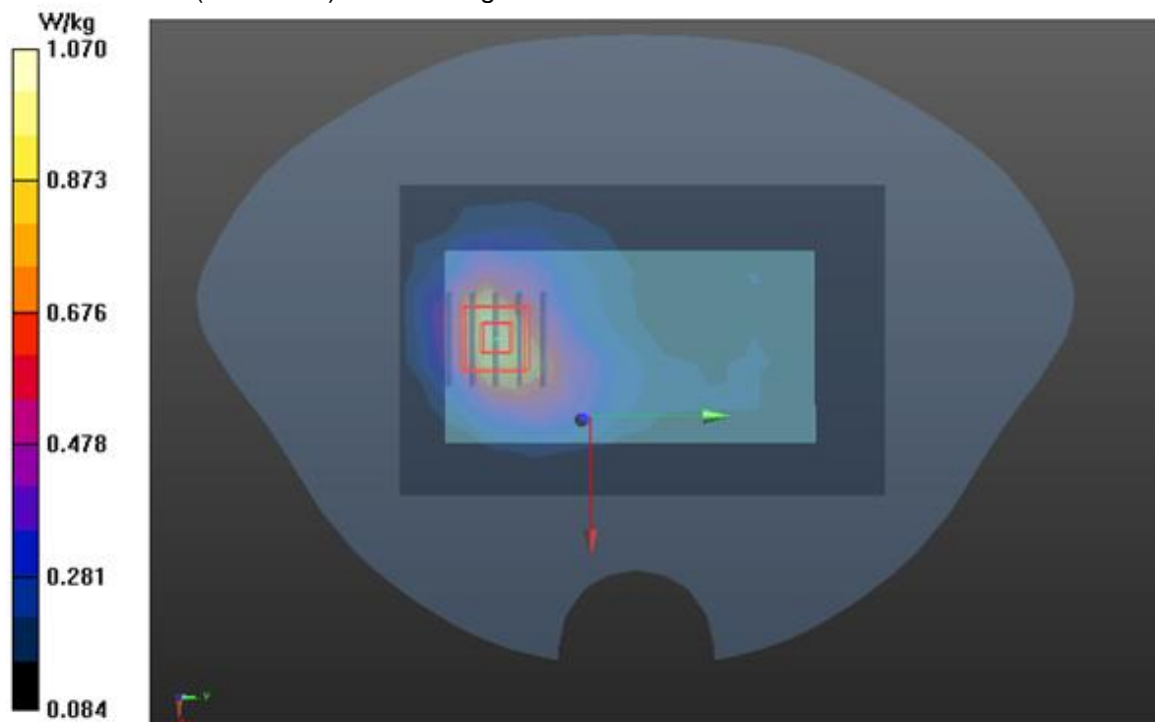
Communication System: GPRS-4 Slot; Communication System Band: PCS 1900; Duty Cycle: 1:2.1;
Frequency: 1909.8 MHz; Medium parameters used: $f = 1900$ MHz; $\sigma = 1.53$ mho/m; $\epsilon_r = 53.11$; $\rho = 1000$ kg/m³ ;
Phantom section: Flat Section
Ambient temperature (°C):22.0, Liquid temperature (°C): 21.9

DASY Configuration:

- Probe: ES3DV3 – SN3337; ConvF(4.83,4.83, 4.83); Calibrated:10/01/2015;
- Sensor-Surface: 3mm (Mechanical Surface Detection), $z = 1.0, 31.0$
- Electronics: DAE4 Sn1398; Calibrated: 02/02/2016
- Phantom: SAM (20deg probe tilt) with CRP v5.0; Type: QD000P40CD;
- DASY52 52.8.7(1137); SEMCAD X 14.6.10(7164)

BODY/4ST-BACK-H 2/Area Scan (8x12x1): Measurement grid: $dx=15$ mm, $dy=15$ mm
Maximum value of SAR (measured) = 1.05 W/kg

BODY/4ST-BACK-H 2/Zoom Scan (5x5x7)/Cube 0: Measurement grid: $dx=8$ mm, $dy=8$ mm, $dz=5$ mm
Reference Value = 26.944 V/m; Power Drift = 0.11 dB
Peak SAR (extrapolated) = 1.23 W/kg
SAR(1 g) = 0.872 W/kg; SAR(10 g) = 0.599 W/kg
Maximum value of SAR (measured) = 1.07 W/kg



Test Laboratory: AGC Lab
WCDMA Band II Mid-Touch-Right
DUT: Smart Phone; Type: G31

Date: Apr. 23,2016

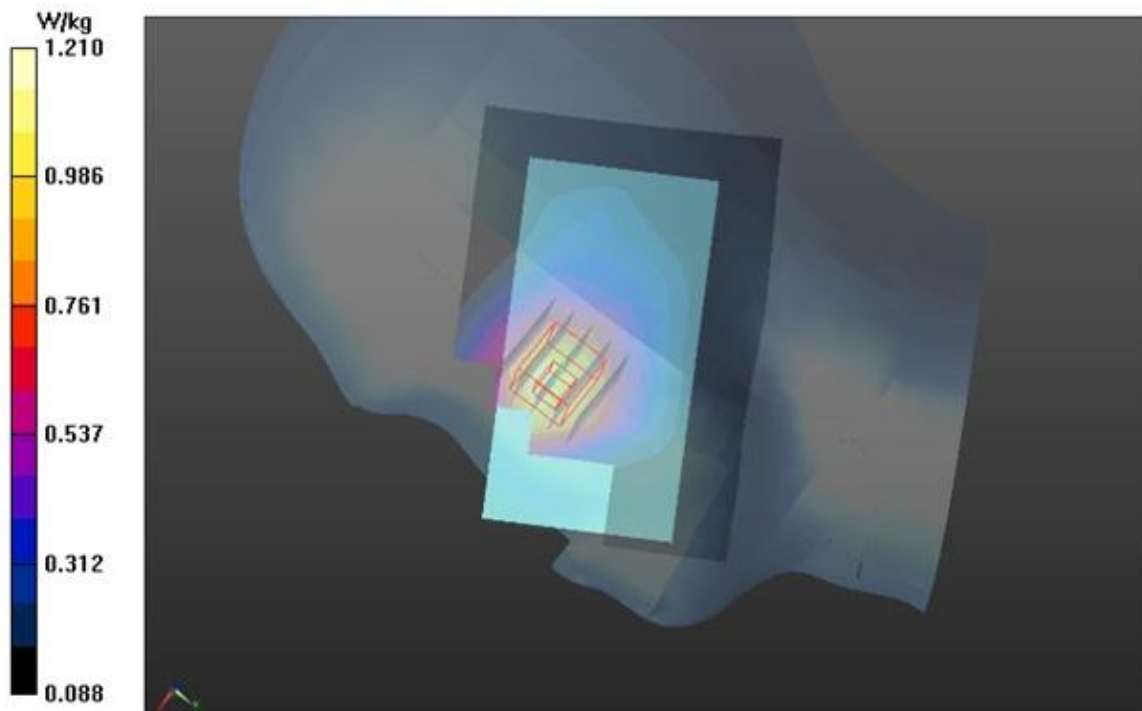
Communication System: UID 0, WCDMA 1900 (0); Communication System Band: Band II UTRA/FDD ;
Duty Cycle:1:1; Frequency: 1880 MHz; Medium parameters used: $f = 1900$ MHz; $\sigma = 1.40$ mho/m; $\epsilon_r = 40.83$;
 $\rho = 1000$ kg/m³ ; Phantom section: Right Section
Ambient temperature (°C):22.0, Liquid temperature (°C): 21.7

DASY Configuration:

- Probe: ES3DV3 – SN3337; ConvF(5.23, 5.23, 5.23); Calibrated:10/01/2015;
- Sensor-Surface: 3mm (Mechanical Surface Detection), $z = 1.0, 31.0$
- Electronics: DAE4 Sn1398; Calibrated: 02/02/2016
- Phantom: SAM (20deg probe tilt) with CRP v5.0; Type: QD000P40CD;
- DASY52 52.8.7(1137); SEMCAD X 14.6.10(7164)

RIGHT HEAD/R-C/Area Scan (8x11x1): Measurement grid: $dx=15$ mm, $dy=15$ mm
Maximum value of SAR (measured) = 1.18 W/kg

RIGHT HEAD/R-C/Zoom Scan (5x5x7)/Cube 0: Measurement grid: $dx=8$ mm, $dy=8$ mm, $dz=5$ mm
Reference Value = 6.011 V/m; Power Drift = 0.07 dB
Peak SAR (extrapolated) = 1.38 W/kg
SAR(1 g) = 0.952 W/kg; SAR(10 g) = 0.685 W/kg
Maximum value of SAR (measured) = 1.21 W/kg



Test Laboratory: AGC Lab
WCDMA Band II Mid -Body-Towards Grounds
DUT: Smart Phone; Type: G31

Date: Apr. 24,2016

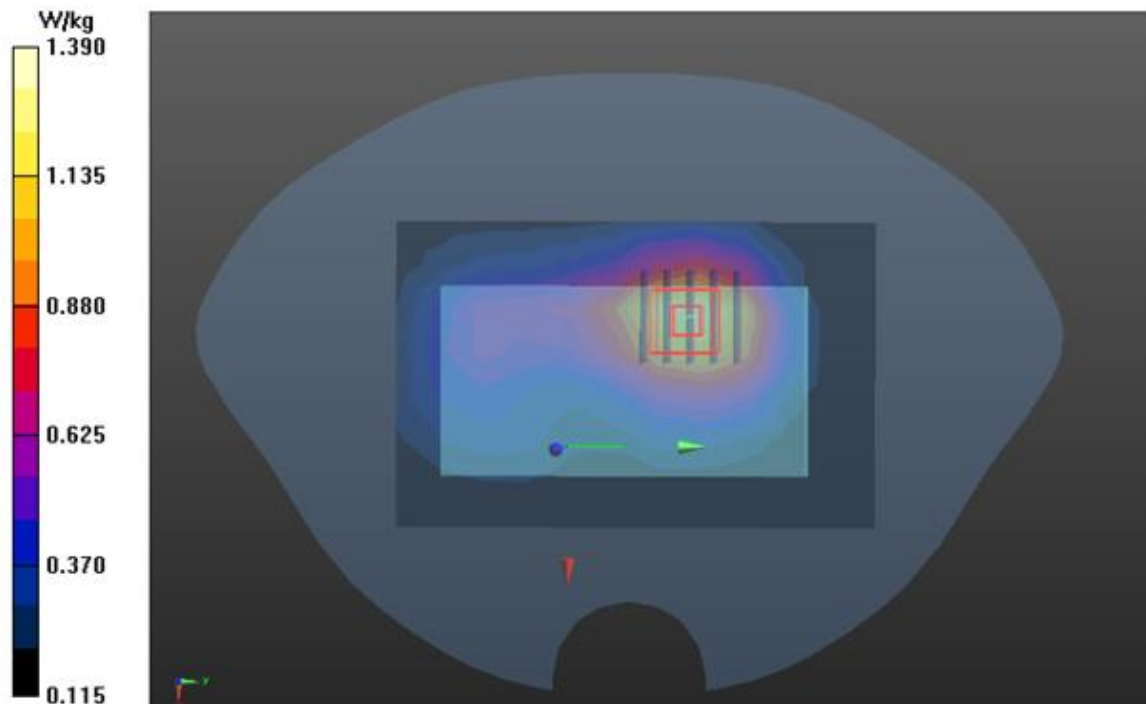
Communication System: UID 0, WCDMA 1900 (0); Communication System Band: Band II UTRA/FDD ;
Duty Cycle:1:1; Frequency: 1880 MHz; Medium parameters used: $f = 1900$ MHz; $\sigma = 1.53$ mho/m; $\epsilon_r = 53.11$;
 $\rho = 1000$ kg/m³ ; Phantom section: Flat Section
Ambient temperature (°C):22.0, Liquid temperature (°C): 21.9

DASY Configuration:

- Probe: ES3DV3 – SN3337; ConvF(4.83,4.83, 4.83); Calibrated:10/01/2015;
- Sensor-Surface: 3mm (Mechanical Surface Detection), $z = 1.0, 31.0$
- Electronics: DAE4 Sn1398; Calibrated: 02/02/2016
- Phantom: SAM (20deg probe tilt) with CRP v5.0; Type: QD000P40CD;
- DASY52 52.8.7(1137); SEMCAD X 14.6.10(7164)

BODY/BACK/Area Scan (8x12x1): Measurement grid: $dx=15$ mm, $dy=15$ mm
Maximum value of SAR (measured) = 1.36 W/kg

BODY/BACK/Zoom Scan (5x5x7)/Cube 0: Measurement grid: $dx=8$ mm, $dy=8$ mm, $dz=5$ mm
Reference Value = 30.689 V/m; Power Drift = -0.18 dB
Peak SAR (extrapolated) = 1.60 W/kg
SAR(1 g) = 1.13 W/kg; SAR(10 g) = 0.773 W/kg
Maximum value of SAR (measured) = 1.39 W/kg



Test Laboratory: AGC Lab
WCDMA Band V Mid-Touch-Left
DUT: Smart Phone; Type: G31

Date: Apr. 25,2016

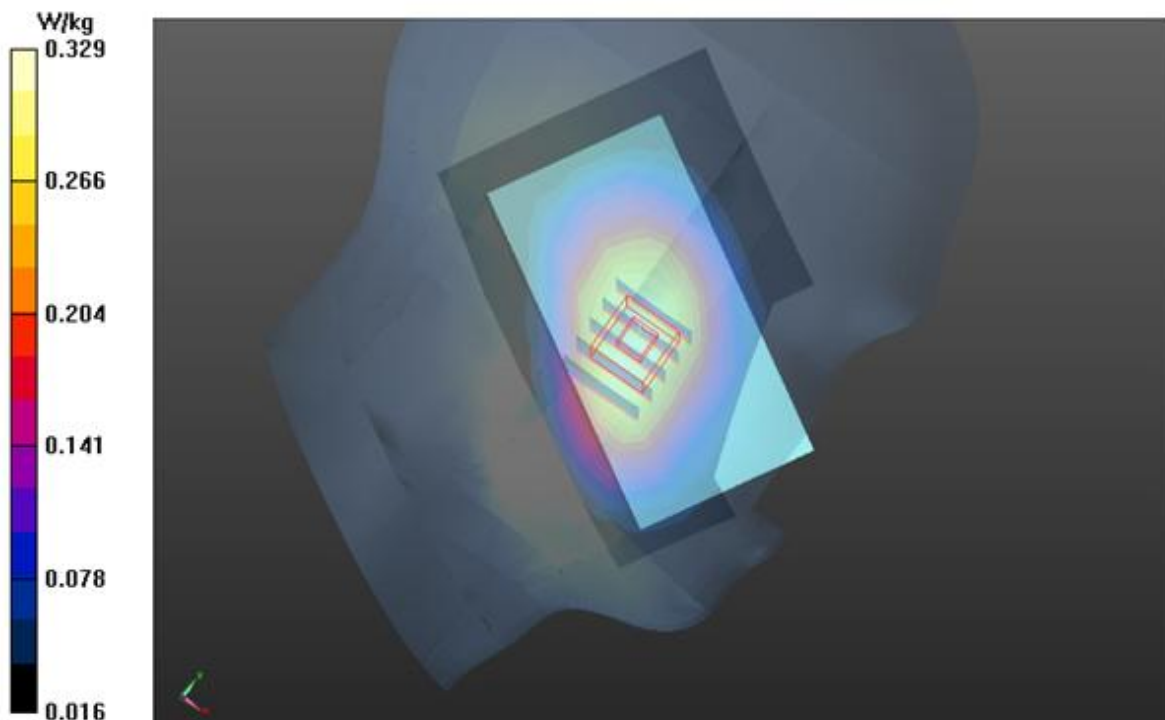
Communication System: UID 0, WCDMA 850 (0); Communication System Band: BAND V UTRA/FDD;
Duty Cycle:1:1; Frequency: 836.6 MHz; Medium parameters used: $f = 835$ MHz; $\sigma=0.89$ mho/m; $\epsilon_r=42.10$
 $\rho= 1000$ kg/m³ ;
Phantom section: Left Section
Ambient temperature (°C): 21.3, Liquid temperature (°C): 21.2

DASY Configuration:

- Probe: ES3DV3 – SN3337; ConvF(6.32, 6.32, 6.32); Calibrated:10/01/2015;
- Sensor-Surface: 3mm (Mechanical Surface Detection), $z = 1.0, 31.0$
- Electronics: DAE4 Sn1398; Calibrated: 02/02/2016
- Phantom: SAM (20deg probe tilt) with CRP v5.0; Type: QD000P40CD;
- DASY52 52.8.7(1137); SEMCAD X 14.6.10(7164)

LEFT HEAD/L-C/Area Scan (8x11x1): Measurement grid: $dx=15$ mm, $dy=15$ mm
Maximum value of SAR (measured) = 0.326 W/kg

LEFT HEAD/L-C/Zoom Scan (5x5x7)/Cube 0: Measurement grid: $dx=8$ mm, $dy=8$ mm, $dz=5$ mm
Reference Value = 3.081 V/m; Power Drift = 0.16 dB
Peak SAR (extrapolated) = 0.368 W/kg
SAR(1 g) = 0.272 W/kg; SAR(10 g) = 0.174 W/kg
Maximum value of SAR (measured) = 0.329 W/kg



Test Laboratory: AGC Lab
WCDMA Band V Mid-Body-Towards Grounds
DUT: Smart Phone; Type: G31

Date: Apr. 26,2016

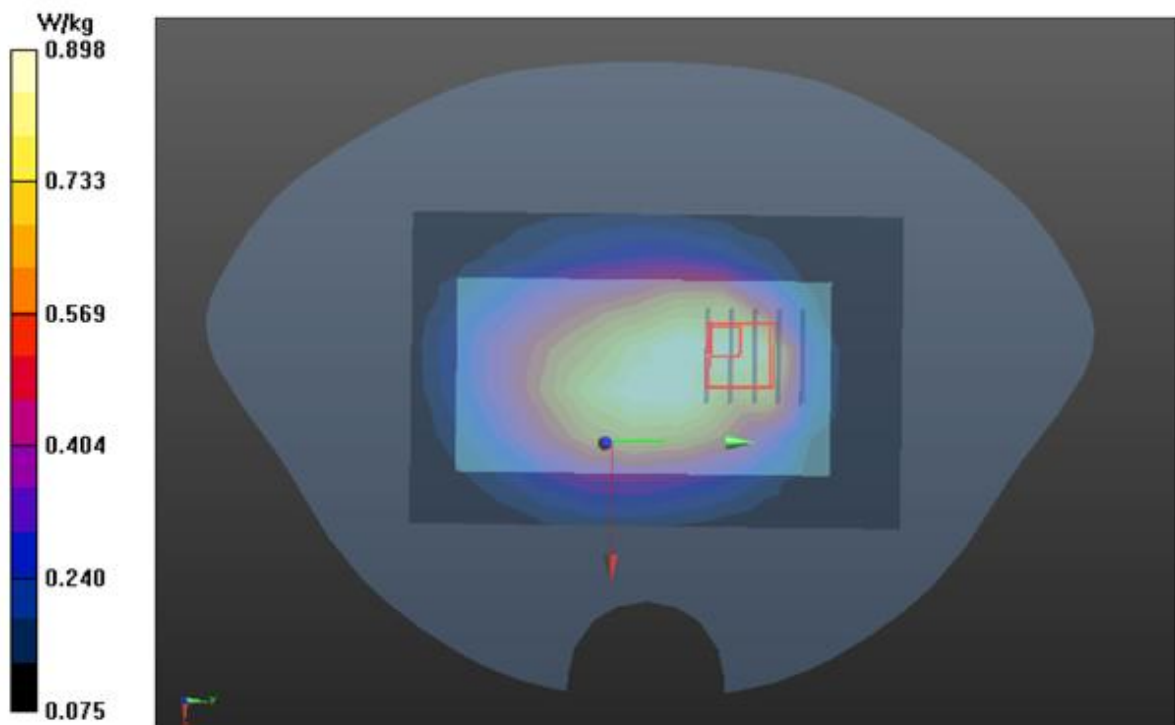
Communication System: UID 0, WCDMA 850 (0); Communication System Band: BAND V UTRA/FDD;
Duty Cycle:1:1; Frequency: 836.6 MHz; Medium parameters used: $f = 835$ MHz; $\sigma = 0.95$ mho/m; $\epsilon_r = 55.99$;
 $\rho = 1000$ kg/m³; Phantom section: Flat Section
Ambient temperature (°C): 21.3, Liquid temperature (°C): 21.9

DASY Configuration:

- Probe: ES3DV3 – SN3337; ConvF(6.31, 6.31, 6.31); Calibrated:10/01/2015;
- Sensor-Surface: 3mm (Mechanical Surface Detection), $z = 1.0, 31.0$
- Electronics: DAE4 Sn1398; Calibrated: 02/02/2016
- Phantom: SAM (20deg probe tilt) with CRP v5.0; Type: QD000P40CD;
- DASY52 52.8.7(1137); SEMCAD X 14.6.10(7164)

BODY/BACK/Area Scan (7x11x1): Measurement grid: $dx=15$ mm, $dy=15$ mm
Maximum value of SAR (measured) = 0.899 W/kg

BODY/BACK/Zoom Scan (5x5x7)/Cube 0: Measurement grid: $dx=8$ mm, $dy=8$ mm, $dz=5$ mm
Reference Value = 26.297 V/m; Power Drift = -0.02 dB
Peak SAR (extrapolated) = 1.02 W/kg
SAR(1 g) = 0.738 W/kg; SAR(10 g) = 0.511 W/kg
Maximum value of SAR (measured) = 0.898 W/kg



WIFI MODE

Test Laboratory: AGC Lab

Date: Apr. 26,2016

802.11b Mid-Touch-Left

DUT: Smart Phone; Type: G31

Communication System: UID 0, WiFi 802.11b (0); Communication System Band: 802.11b; Duty Cycle: 1:1;
Frequency: 2437 MHz; Medium parameters used: $f = 2450$ MHz; $\sigma = 1.79$ mho/m; $\epsilon_r = 39.11$; $\rho = 1000$ kg/m³ ;
Phantom section: Left Section
Ambient temperature (°C): 21.3, Liquid temperature (°C): 21.4

DASY Configuration:

- Probe: ES3DV3 – SN3337; ConvF(4.66,4.66, 4.66); Calibrated:10/01/2015
- Sensor-Surface: 3mm (Mechanical Surface Detection), $z = 1.0, 31.0$
- Electronics: DAE4 Sn1398; Calibrated: 02/02/2016
- Phantom: SAM (20deg probe tilt) with CRP v5.0; Type: QD000P40CD;
- DASY52 52.8.7(1137); SEMCAD X 14.6.10(7164)

LEFT HEAD/L-C/Area Scan (8x11x1): Measurement grid: $dx=15$ mm, $dy=15$ mm

Maximum value of SAR (measured) = 0.386 W/kg

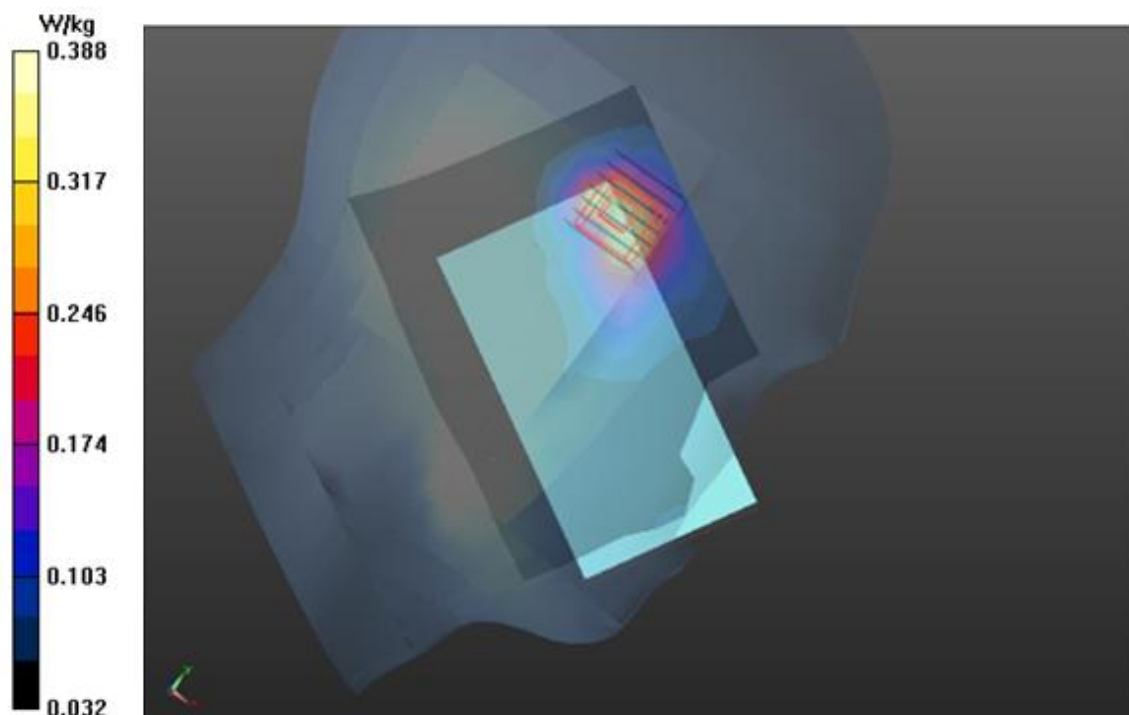
LEFT HEAD/L-C/Zoom Scan (5x5x7)/Cube 0: Measurement grid: $dx=8$ mm, $dy=8$ mm, $dz=5$ mm

Reference Value = 9.868 V/m; Power Drift = 0.06 dB

Peak SAR (extrapolated) = 0.429 W/kg

SAR(1 g) = 0.339 W/kg; SAR(10 g) = 0.248 W/kg

Maximum value of SAR (measured) = 0.388 W/kg



Test Laboratory: AGC Lab
802.11b Mid- Body- Back (DTS)
DUT: Smart Phone; Type: G31

Date: Apr. 26,2016

Communication System: UID 0, WiFi 802.11b (0); Communication System Band: 802.11b; Duty Cycle: 1:1;
Frequency: 2437 MHz; Medium parameters used: $f = 2450$ MHz; $\sigma = 1.93$ mho/m; $\epsilon_r = 52.66$; $\rho = 1000$ kg/m³ ;
Phantom section: Flat Section
Ambient temperature (°C): 21.3, Liquid temperature (°C): 21.1

DASY Configuration:

- Probe: ES3DV3 – SN3337; ConvF(4.36,4.36, 4.36); Calibrated:10/01/2015
- Sensor-Surface: 3mm (Mechanical Surface Detection), $z = 1.0, 31.0$
- Electronics: DAE4 Sn1398; Calibrated: 02/02/2016
- Phantom: SAM (20deg probe tilt) with CRP v5.0; Type: QD000P40CD;
- DASY52 52.8.7(1137); SEMCAD X 14.6.10(7164)

BODY/BACK/Area Scan (8x12x1): Measurement grid: $dx=15$ mm, $dy=15$ mm
Maximum value of SAR (measured) = 0.269 W/kg

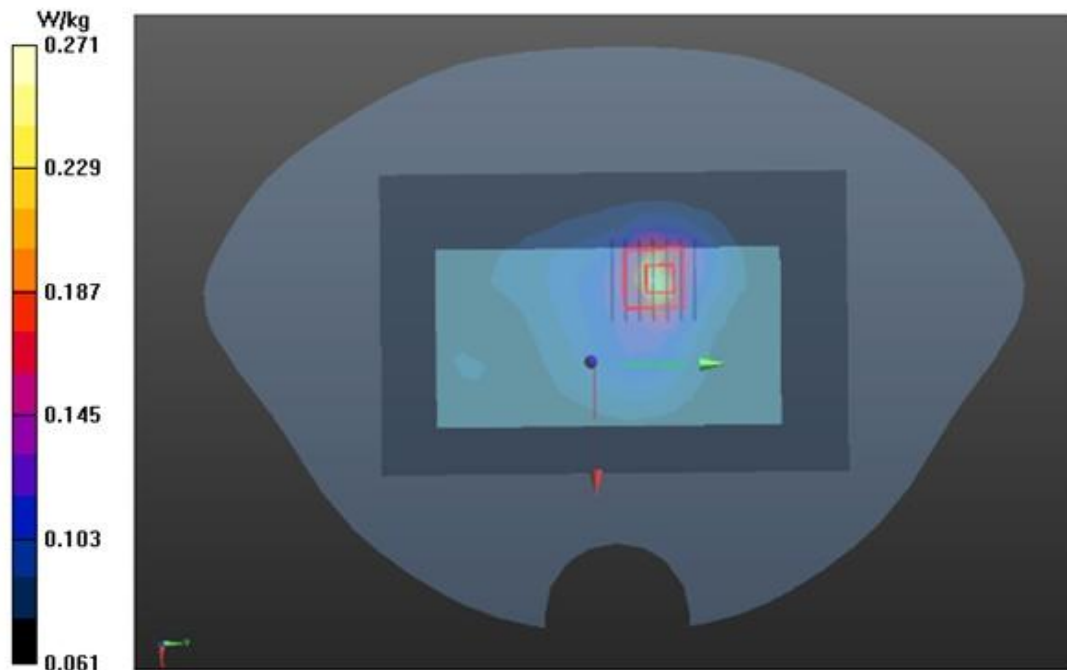
BODY/BACK/Zoom Scan (5x5x7)/Cube 0: Measurement grid: $dx=8$ mm, $dy=8$ mm, $dz=5$ mm

Reference Value = 14.136 V/m; Power Drift = -0.02 dB

Peak SAR (extrapolated) = 0.314 W/kg

SAR(1 g) = 0.245 W/kg; SAR(10 g) = 0.186 W/kg

Maximum value of SAR (measured) = 0.271 W/kg



Repeated SAR

Test Laboratory: AGC Lab
GPRS 1900 Mid-Touch-Left (4up) < SIM 1>
DUT: Smart Phone; Type: G31

Date: Apr. 23,2016

Communication System: GPRS-4 Slot; Communication System Band: PCS 1900; Duty Cycle: 1:2.1;
Frequency: 1880 MHz; Medium parameters used: $f = 1900$ MHz; $\sigma = 1.40$ mho/m; $\epsilon_r = 40.83$; $\rho = 1000$ kg/m³ ;
Phantom section: Left Section
Ambient temperature (°C):22.0, Liquid temperature (°C): 21.7

DASY Configuration:

- Probe: ES3DV3 – SN3337; ConvF(5.23, 5.23, 5.23); Calibrated:10/01/2015;
- Sensor-Surface: 3mm (Mechanical Surface Detection), $z = 1.0, 31.0$
- Electronics: DAE4 Sn1398; Calibrated: 02/02/2016
- Phantom: SAM (20deg probe tilt) with CRP v5.0; Type: QD000P40CD;
- DASY52 52.8.7(1137); SEMCAD X 14.6.10(7164)

LEFT HEAD/4ST-L-C-REPEATED/Area Scan (7x11x1): Measurement grid: dx=15mm, dy=15mm
Maximum value of SAR (measured) = 1.23 W/kg

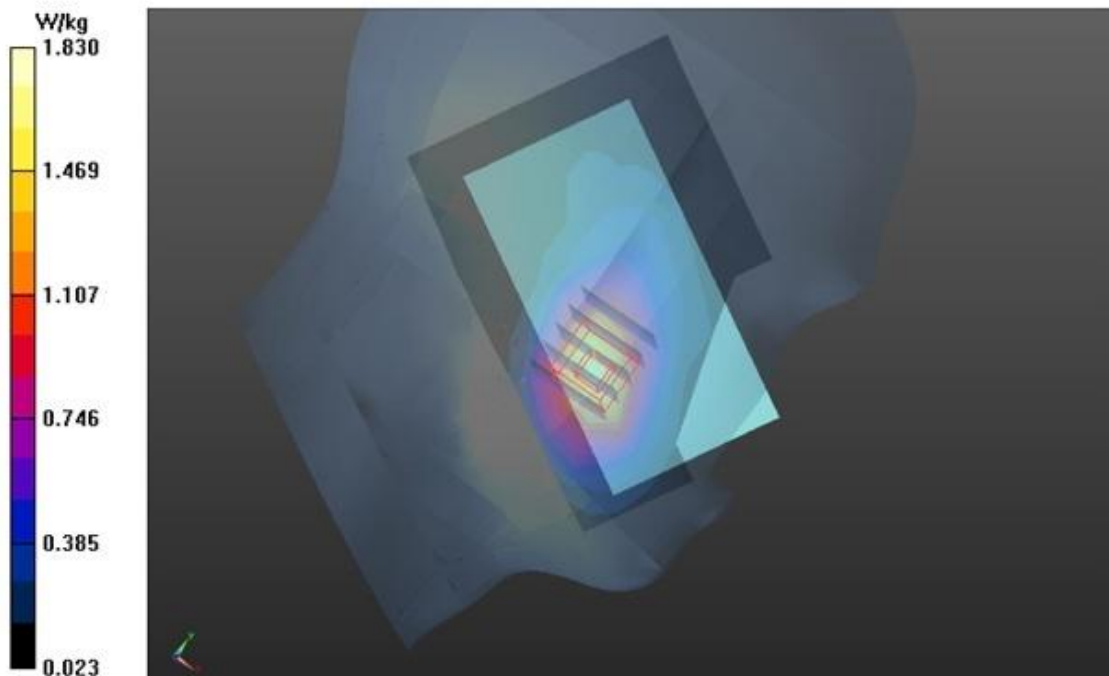
LEFT HEAD/4ST-L-C-REPEATED/Zoom Scan (5x5x7)/Cube 0: Measurement grid: dx=8mm, dy=8mm, dz=5mm

Reference Value = 16.006 V/m; Power Drift = 0.02 dB

Peak SAR (extrapolated) = 2.62 W/kg

SAR(1 g) = 1.1 W/kg; SAR(10 g) = 0.547 W/kg

Maximum value of SAR (measured) = 1.83 W/kg



Test Laboratory: AGC Lab
WCDMA Band II Mid -Body-Towards Grounds
DUT: Smart Phone; Type: G31

Date: Apr. 24,2016

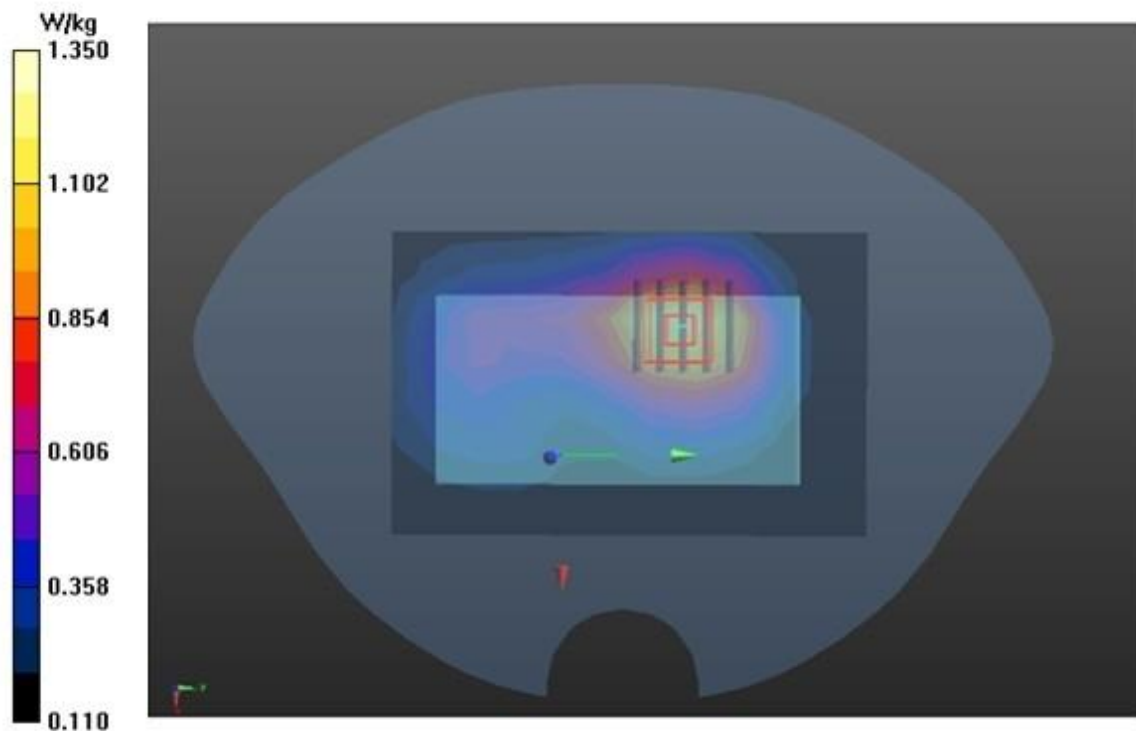
Communication System: UID 0, WCDMA 1900 (0); Communication System Band: Band II UTRA/FDD ;
Duty Cycle:1:1; Frequency: 1880 MHz; Medium parameters used: $f = 1900$ MHz; $\sigma = 1.53$ mho/m; $\epsilon_r = 53.11$;
 $\rho = 1000$ kg/m³ ; Phantom section: Flat Section
Ambient temperature (°C):22.0, Liquid temperature (°C): 21.9

DASY Configuration:

- Probe: ES3DV3 – SN3337; ConvF(4.83,4.83, 4.83); Calibrated:10/01/2015;
- Sensor-Surface: 3mm (Mechanical Surface Detection), $z = 1.0, 31.0$
- Electronics: DAE4 Sn1398; Calibrated: 02/02/2016
- Phantom: SAM (20deg probe tilt) with CRP v5.0; Type: QD000P40CD;
- DASY52 52.8.7(1137); SEMCAD X 14.6.10(7164)

BODY/BACK/Area Scan (8x12x1): Measurement grid: $dx=15$ mm, $dy=15$ mm
Maximum value of SAR (measured) = 1.34 W/kg

BODY/BACK/Zoom Scan (5x5x7)/Cube 0: Measurement grid: $dx=8$ mm, $dy=8$ mm, $dz=5$ mm
Reference Value = 29.352 V/m; Power Drift = -0.01 dB
Peak SAR (extrapolated) = 1.55 W/kg
SAR(1 g) = 1.1 W/kg; SAR(10 g) = 0.750 W/kg
Maximum value of SAR (measured) = 1.35 W/kg



APPENDIX C. TEST SETUP PHOTOGRAPHS & EUT PHOTOGRAPHS

Refer to Attached files.

APPENDIX D. CALIBRATION DATA

Refer to Attached files.