



SGS-CSTC Standards Technical Services Co., Ltd.
Shenzhen Branch

No. 1 Workshop, M-10, Middle Section, Science & Technology Park,
District Shenzhen, China 518057

Telephone: +86 (0) 755 2601 2053
Fax: +86 (0) 755 2671 0594
Email: ee.shenzhen@sgs.com

Report No.: SZEM160400249602

Page: 1 of 17

Human Exposure Report

Application No.: SZEM1604002496PS
Applicant/ Manufacturer: Best Case and Accessories, Inc.
Address of Applicant/ Manufacturer: 140 58th Street – Ste. 2i Brooklyn, NY 11220 USA
Factory: DONGGUAN ARUN INDUSTRIAL CO.,LTD
Address of Factory: NO.18, Xinfeng Street, Changlong Village, Huangjiang Town, Dongguan City, Guangdong Province, P.R.China
Equipment Under Test (EUT):
EUT Name: SKU 04070
Model No.: SKU 04070
Trade Mark: Just Wireless
FCC ID: 2AH8SWX0001
Standards: 47 CFR PART 1, Subpart I, Section 1.1310
Date of Receipt: 2016-04-19
Date of Test: 2016-04-26
Date of Issue: 2016-04-27

Test Result :	Pass*
----------------------	--------------

* This report is just a test result base on the test method and limit requirement shown in the form on the second page. The report must not be used by the client to claim product certification, approval, or endorsement by NVLAP, NIST, or any agency of the federal government..

Authorized Signature:



Starry Li
EMC Laboratory Project Engineer



2 Contents

	Page
1 COVER PAGE	1
2 CONTENTS	2
3 GENERAL INFORMATION	3
3.1 DETAILS OF E.U.T.	3
3.2 DESCRIPTION OF SUPPORT UNITS	3
3.3 TEST LOCATION	3
3.4 TEST FACILITY	4
3.5 DEVIATION FROM STANDARDS	4
3.6 ABNORMALITIES FROM STANDARD CONDITIONS	4
4 EQUIPMENTS USED DURING TEST	4
5 TEST RESULTS	7
5.1 RF EXPOSURE TEST	7
5.1.1 E.U.T. Operation	7
Operating Environment:	7
EUT Operation:	7
5.1.2 Measurement Data	8
6 PHOTOGRAPHS	10
6.1 TEST PHOTOS	10
6.2 EUT PHOTOS	16-17



3 General Information

3.1 Details of E.U.T.

Power Supply: AC 120V/60Hz
USB Cable: 157cm, unshielded

3.2 Description of Support Units

The EUT has been tested with associated equipment below.

Description	Manufacturer	Model No.	Serial No.
Mobile phone	sumsang	GALAXY S4	N/A

3.3 Test Location

All tests were performed at:

SGS-CSTC Standards Technical Services Co., Ltd., Shenzhen Branch E&E Lab,

No. 1 Workshop, M-10, Middle section, Science & Technology Park, Shenzhen, Guangdong, China
518057.

Tel: +86 755 2601 2053 Fax: +86 755 2671 0594

No tests were sub-contracted.



3.4 Test Facility

The test facility is recognized, certified, or accredited by the following organizations:

- **CNAS (No. CNAS L2929)**

CNAS has accredited SGS-CSTC Standards Technical Services Co., Ltd. Shenzhen Branch EMC Lab to ISO/IEC 17025:2005 General Requirements for the Competence of Testing and Calibration Laboratories (CNAS-CL01 Accreditation Criteria for the Competence of Testing and Calibration Laboratories) for the competence in the field of testing.

- **A2LA (Certificate No. 3816.01)**

SGS-CSTC Standards Technical Services Co., Ltd., Shenzhen EMC Laboratory is accredited by the American Association for Laboratory Accreditation(A2LA). Certificate No. 3816.01.

- **VCCI**

The 10m Semi-anechoic chamber and Shielded Room of SGS-CSTC Standards Technical Services Co., Ltd. have been registered in accordance with the Regulations for Voluntary Control Measures with Registration No.: G-823, R-4188, T-1153 and C-2383 respectively.

- **FCC – Registration No.: 556682**

SGS-CSTC Standards Technical Services Co., Ltd., Shenzhen EMC Laboratory has been registered and fully described in a report filed with the (FCC) Federal Communications Commission. The acceptance letter from the FCC is maintained in our files. Registration No.: 556682.

- **Industry Canada (IC)**

The 10m Semi-anechoic chambers of SGS-CSTC Standards Technical Services Co., Ltd. Shenzhen Branch EMC Lab has been registered by Certification and Engineering Bureau of Industry Canada for radio equipment testing with Registration No.: 4620C-3.

3.5 Deviation from Standards

None.

3.6 Abnormalities from Standard Conditions

None.





4 Equipments Used during Test

Conducted Emission						
Item	Test Equipment	Manufacturer	Model No.	Inventory No.	Cal. date (yyyy-mm-dd)	Cal.Due date (yyyy-mm-dd)
1	Shielding Room	ZhongYu Electron	GB-88	SEL0042	2015-05-13	2016-05-13
2	LISN	Rohde & Schwarz	ENV216	SEL0152	2015-10-09	2016-10-09
3	LISN	ETS-LINDGREN	3816/2	SEL0021	2015-05-13	2016-05-13
4	8 Line ISN	Fischer Custom Communications Inc.	FCC-TLISN-T8-02	EMC0120	2015-08-30	2016-08-30
5	4 Line ISN	Fischer Custom Communications Inc.	FCC-TLISN-T4-02	EMC0121	2015-08-30	2016-08-30
6	2 Line ISN	Fischer Custom Communications Inc.	FCC-TLISN-T2-02	EMC0122	2015-08-30	2016-08-30
7	EMI Test Receiver	Rohde & Schwarz	ESCI	SEL0022	2015-05-13	2016-05-13
8	Coaxial Cable	SGS	N/A	SEL0025	2015-05-13	2016-05-13

Item	Test Equipment	Manufacturer	Model No.	Inventory No.	Cal. Due date (yyyy-mm-dd)
1	3m Semi-Anechoic Chamber	ETS-LINDGREN	N/A	SEL0017	2016-06-10
2	Electric Field Meter	Schaffner	EMC20	EMC068	2017-03-27
3	DC Electronic Load	PRODIGIT	3302F	30802F0053 3	2016-12-05



SGS-CSTC Standards Technical Services Co., Ltd.
Shenzhen Branch

Report No.: SZEM160400249602
Page: 6 of 17

RE in Chamber						
Item	Test Equipment	Manufacturer	Model No.	Inventory No.	Cal. date (yyyy-mm-dd)	Cal.Due date (yyyy-mm-dd)
1	10m Semi-Anechoic Chamber	SAEMC	FSAC1018	SEL0303	2015-08-01	2016-08-01
2	EMI Test Receiver (9k-3GHz)	Rohde & Schwarz	ESCI	SEL0175	2015-05-13	2016-05-13
3	EMI Test software	AUDIX	E3	SEL0050	N/A	N/A
4	Coaxial cable	SGS	N/A	SEL0288	2015-05-13	2016-05-13
5	Coaxial cable	SGS	N/A	SEL0275	2015-05-13	2016-05-13
6	Coaxial cable	SGS	N/A	SEL0274	2015-05-13	2016-05-13
7	Trilog-Broadband Antenna(30M-1GHz)	Schwarzbeck	VULB9168	SEM003-17	2016-01-26	2017-01-26
8	Pre-amplifier	Sonoma Instrument Co	310N	SEL0298	2015-05-13	2016-05-13
9	Loop Antenna	ETS-LINDGREN	6502	SEL0802	2015-08-14	2016-08-14

General used equipment						
Item	Test Equipment	Manufacturer	Model No.	Inventory No.	Cal. date (yyyy-mm-dd)	Cal.Due date (yyyy-mm-dd)
1	Humidity/ Temperature Indicator	Shanghai Meteorological Industry Factory	ZJ1-2B	SEL0101	2015-10-12	2016-10-12
2	Humidity/ Temperature Indicator	Shanghai Meteorological Industry Factory	ZJ1-2B	SEL0102	2015-10-12	2016-10-12
3	Humidity/ Temperature Indicator	Shanghai Meteorological Industry Factory	ZJ1-2B	SEL0103	2015-10-12	2016-10-12
4	Barometer	Changchun Meteorological Industry Factory	DYM3	SEL0088	2015-05-13	2016-05-13



5 Test Results

5.1 RF Exposure test

Test Requirement: 47 CFR PART 1, Subpart I, Section 1.1310
Measurement Distance: 10cm
Test voltage: AC 120V 60Hz
Limit:

Frequency range (MHz)	Electric field strength (V/m)	Magnetic field strength (A/m)	Power density (mW/cm ²)	Averaging time (minutes)
(A) Limits for Occupational/Controlled Exposures				
0.3-3.0	614	1.63	*(100)	6
3.0-30	1842/f	4.89/f	*(900/f ²)	6
30-300	61.4	0.163	1.0	6
300-1500	/	/	f/300	6
1500-100,000	/	/	5	6
(B) Limits for General Population/Uncontrolled Exposure				
0.3-1.34	614	1.63	*(100)	30
1.34-30	824/f	2.19/f	*(180/f ²)	30
30-300	27.5	0.073	0.2	30
300-1500	/	/	f/1500	30
1500-100,000	/	/	1.0	30
F=frequency in MHz *=Plane-wave equivalent power density RF exposure compliance will need to be determined with respect to 1.1307(c) and (d) of the FCC rules. The emissions should be within the limits at 300kHz in Table 1 of 1.1310(use the 300kHz limits for 150kHz:614V/m,1.63A/m).				

5.1.1 E.U.T. Operation

Operating Environment:

Temperature: 24.0 °C Humidity: 52 % RH Atmospheric Pressure: 1015 mbar

EUT Operation:

This device has been tested the worst status of full load and the device has been tested with mobile phone at zero charge, intermediate charge, and full charge.



5.1.2 Measurement Data

1: Output Voltage=DC 5V; The max output current =1A;Calculation of resistor value=5Ω

Electric Field Emissions

Test Position	Test Distance (cm)	Probe Measure Result (V/m)	Limit (V/m)	30% Limit (V/m)
Side 1	10	4.58	614	184.2
Side 2	10	4.45	614	184.2
Side 3	10	4.69	614	184.2
Side 4	10	4.98	614	184.2
Top	10	6.74	614	184.2
Bottom	10	3.99	614	184.2

Magnetic Field Emissions

Test Position	Test Distance (cm)	Probe Measure Result (A/m)	Limit (A/m)	30% Limit (A/m)
Side 1	10	0.0865	1.63	0.489
Side 2	10	0.0883	1.63	0.489
Side 3	10	0.0857	1.63	0.489
Side 4	10	0.0875	1.63	0.489
Top	10	0.1051	1.63	0.489
Bottom	10	0.0687	1.63	0.489



SGS-CSTC Standards Technical Services Co., Ltd.
Shenzhen Branch

Report No.: SZEM160400249602
Page: 9 of 17

2:Mobile phone has been charge at zero charge, intermediate charge, and full charge.

Electric Field Emissions

Test Position	Probe Measure Result(V/m)			Limit(V/m)/ 30%Limit(V/m)
	zero charge	intermediate charge	full charge	
Side 1	4.23	4.76	3.38	614
Side 2	3.98	4.67	3.84	614
Side 3	4.76	4.87	4.46	614
Side 4	3.37	3.48	3.45	614
Top	5.75	5.61	5.68	614
Bottom	2.90	2.85	2.59	614

Magnetic Field Emissions

Test Position	Probe Measure Result(A/m)			Limit(A/m)/ 30%Limit(A/m)
	zero charge	intermediate charge	full charge	
Side 1	0.0183	0.0152	0.0181	1.63
Side 2	0.0162	0.0164	0.0184	1.63
Side 3	0.0186	0.0137	0.0196	1.63
Side 4	0.0175	0.0134	0.0174	1.63
Top	0.0273	0.0268	0.0293	1.63
Bottom	0.0157	0.0175	0.0198	1.63

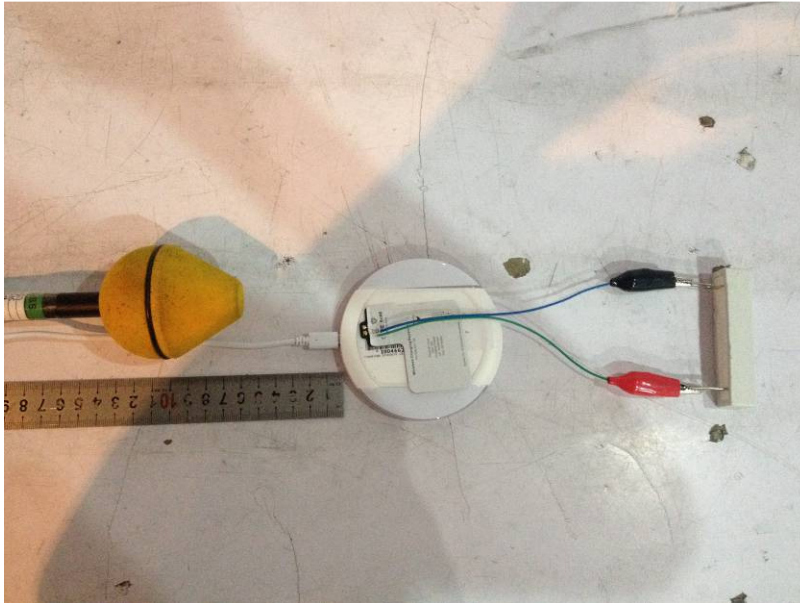
6 Photographs

6.1 Test photos

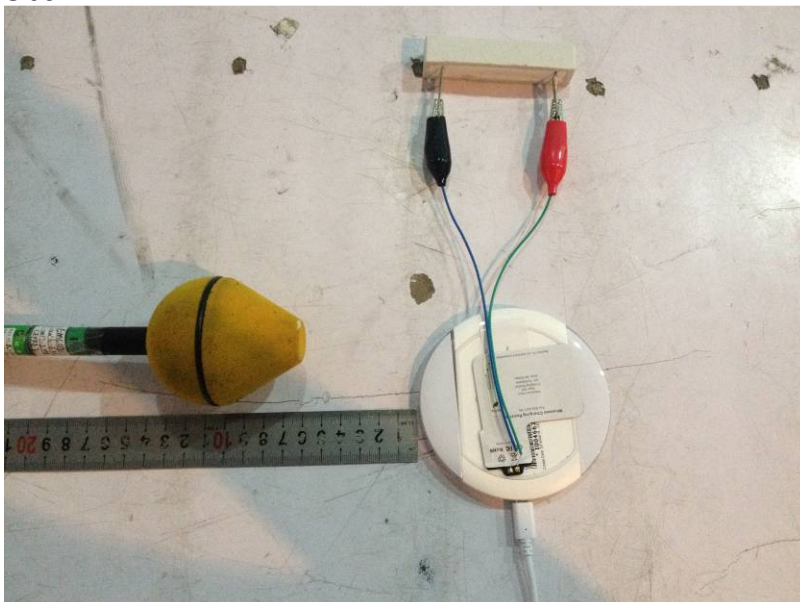
Test Model No.: SKU 04070

Test with full load

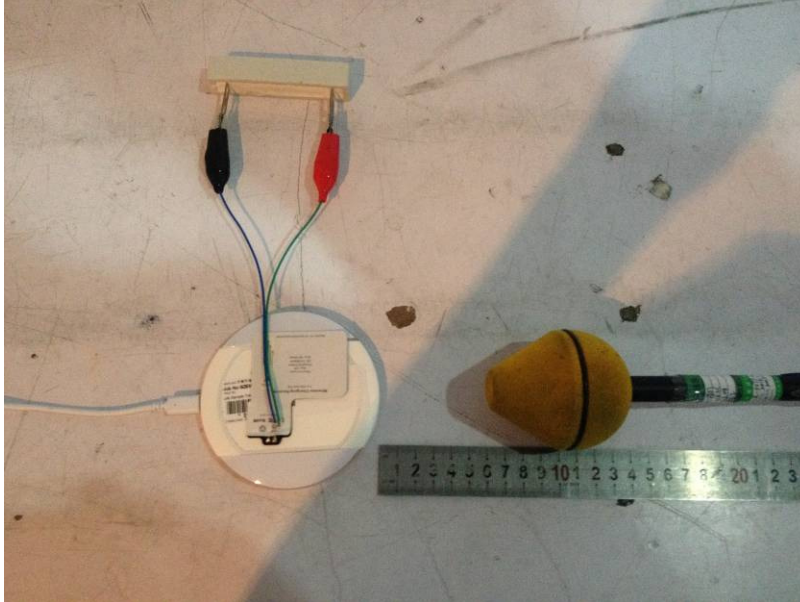
Side 1



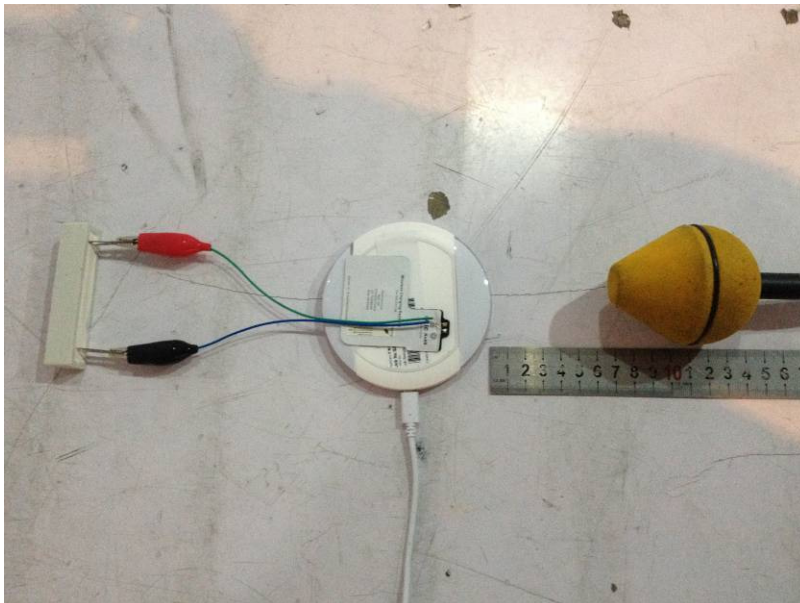
Side 2



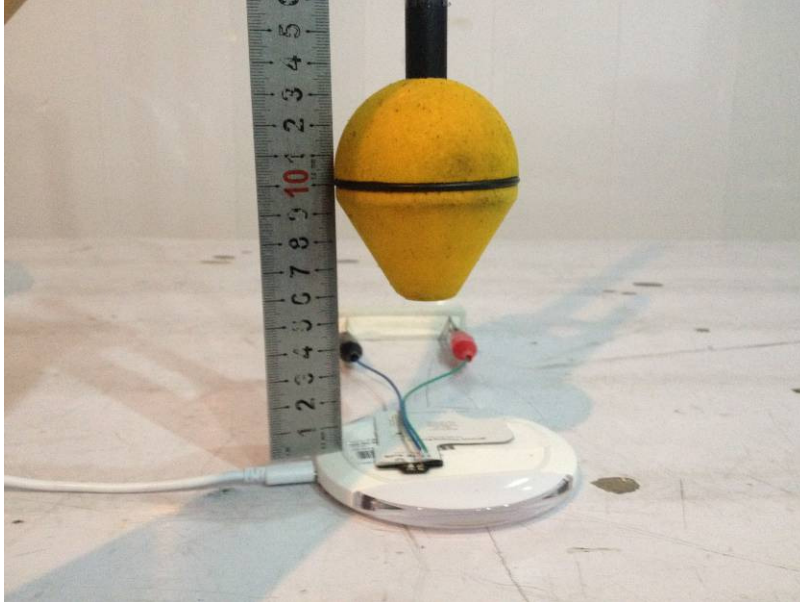
Side 3



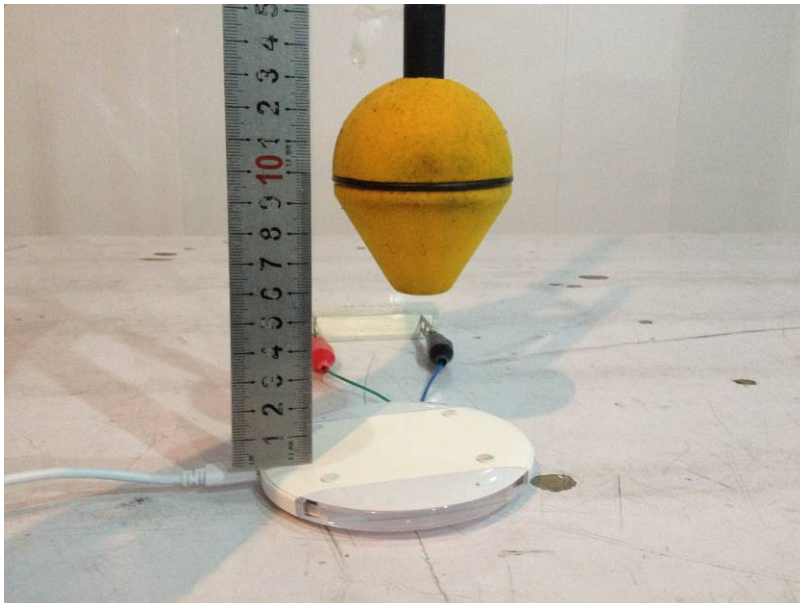
Side 4



Top



Bottom



Test with mobile phone at zero charge,intermediate charge,full charge

Side 1



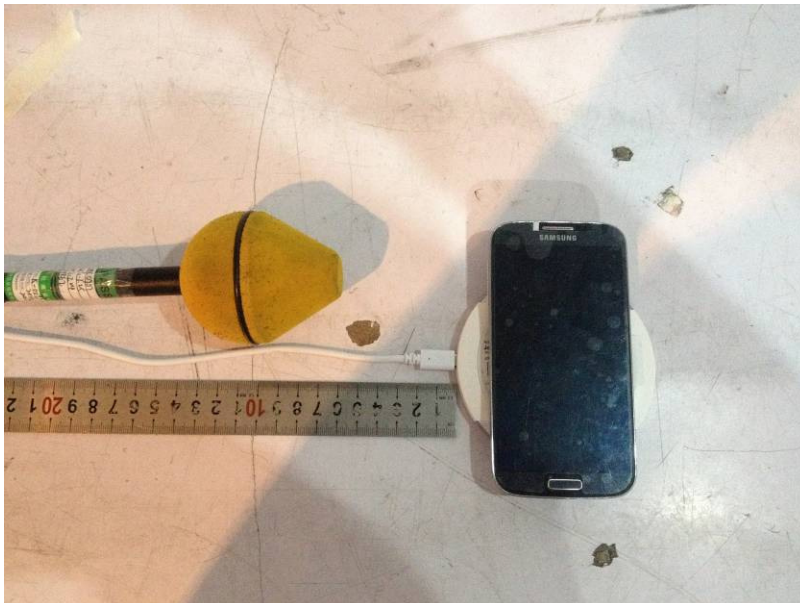
Side 2



Side 3



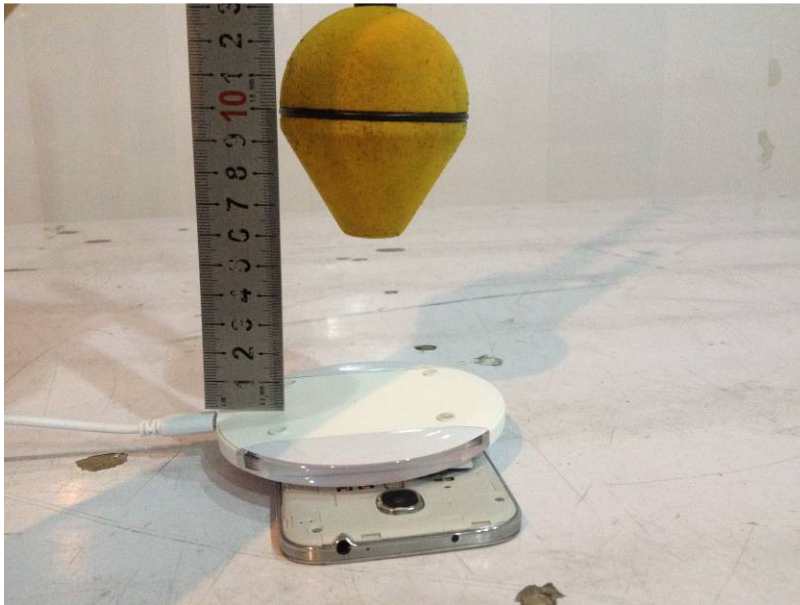
Side 4



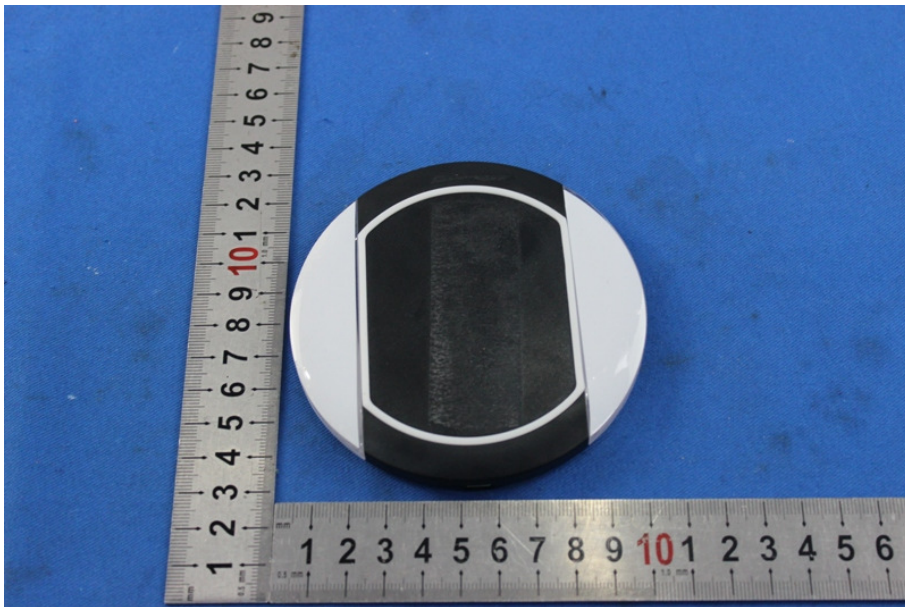
Top

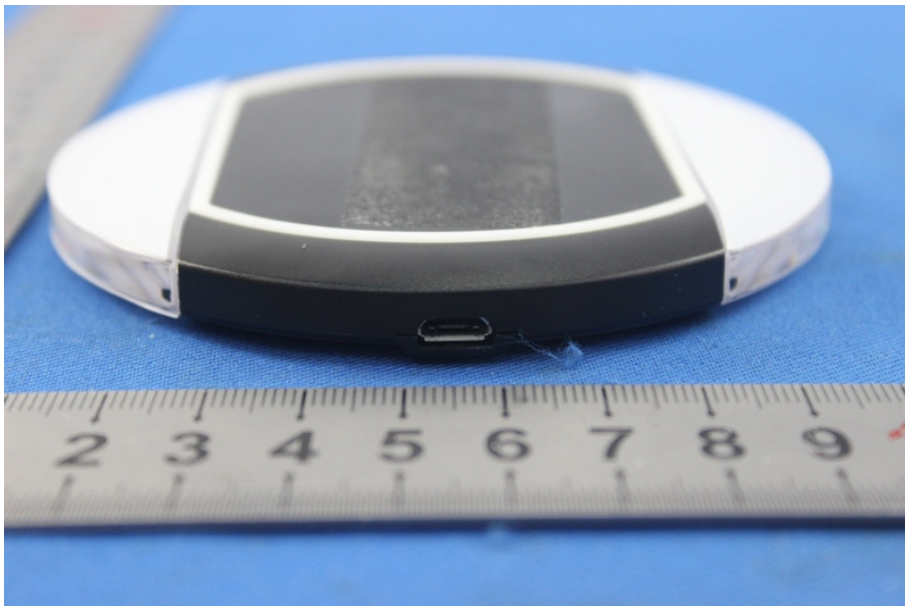
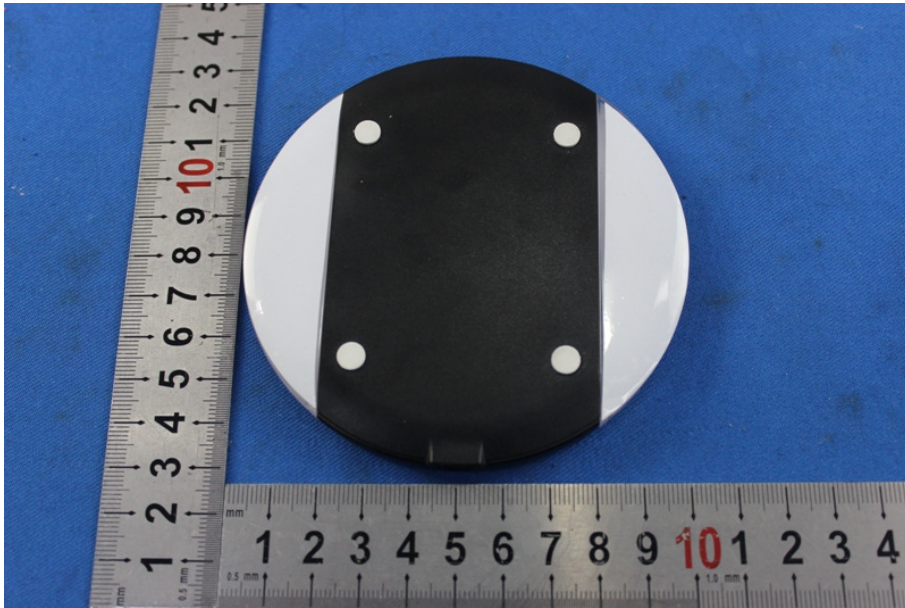


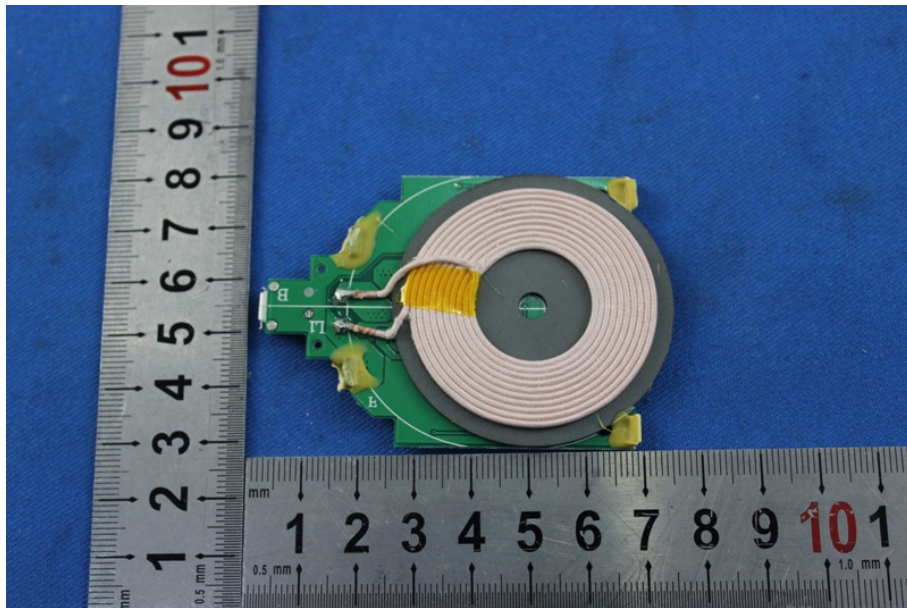
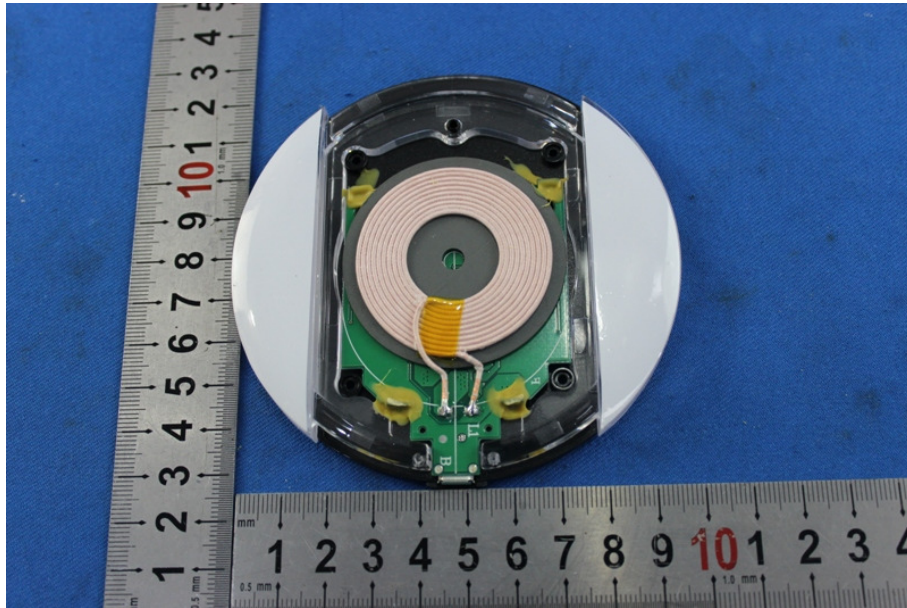
Bottom

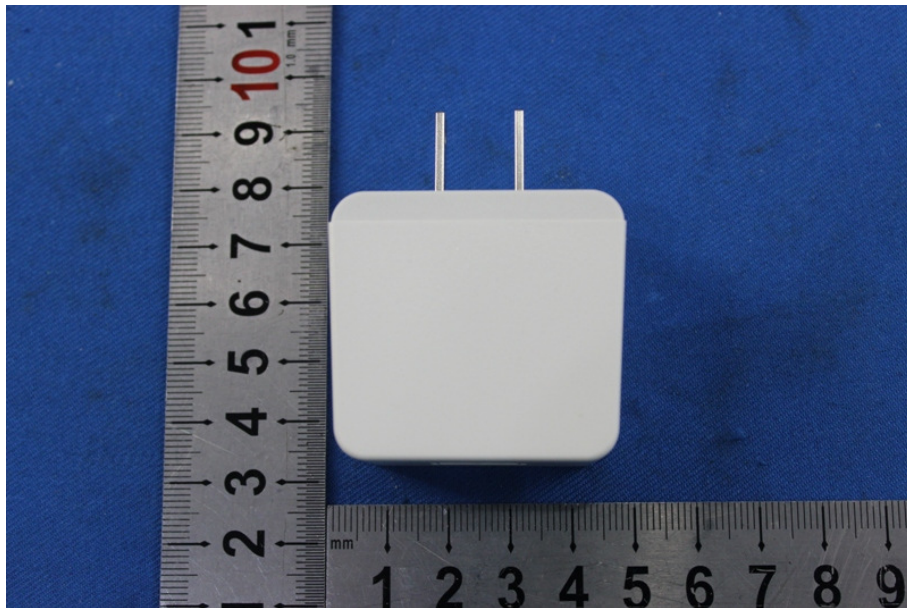
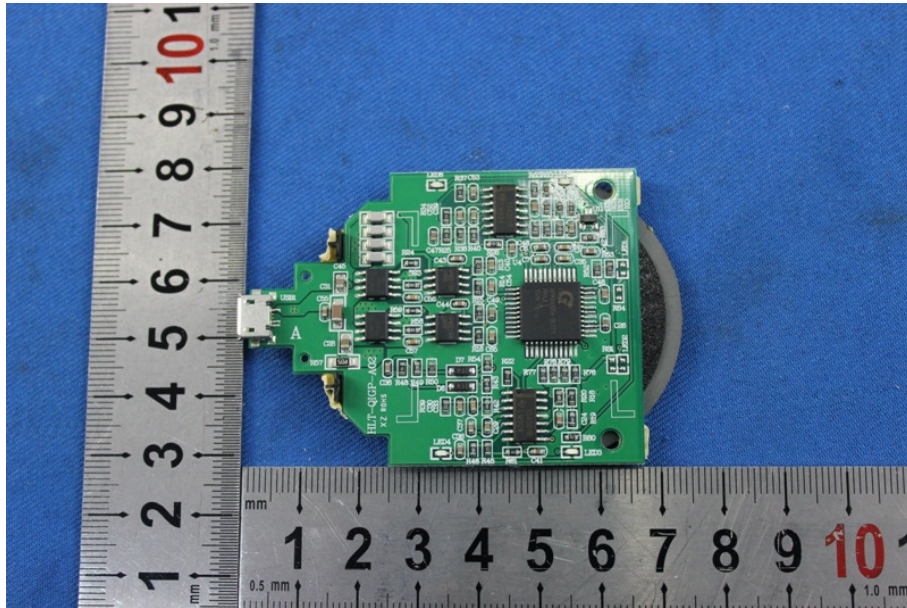


6.2 EUT photos











SGS-CSTC Standards Technical Services Co., Ltd.
Shenzhen Branch

Report No.: SZEM160400249602
Page: 20 of 17

