

Introduction

Thank you for choosing **One61 Studio** Smart Glove System (SGSystem). The SGSystem is a remote control device for smart phones. With the SGSystem you can answer incoming calls and listen to music hands-free. The SGSystem is compliant with the Bluetooth 4.1 and supports the following profiles: Hand Free Profile (HFP) and Human Interface devices (HID). It is compatible with the phone with the following OS, which covers most of the phone in the market:

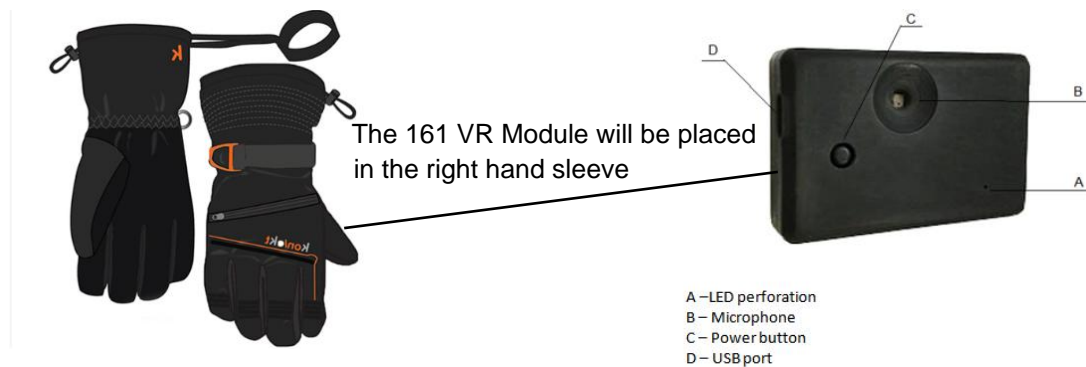
- iOS 8.0 and above
- Androids 5.0 and above

Features:

- Remote Voice Commands control for phone connection and your favorite music player
- Water resistant, may be use in inclement weather.
- more than 10 hours operation time

What's in the box?

The smart glove system contains a pair of glove and a voice-activate remote control module, One61 VR module. This module is inserted in a dedicated packet in the gloves during normal use.



Charging Battery

You need to charge the SGSystem module by connecting a micro USB power to port (D) before the first time use. It takes about 2.5 hours to completely charge the SGSystem module.

Note: the bluetooth connection between the phone and the SGSystem device will be reset during charging.

Getting Started

Mode of Operation

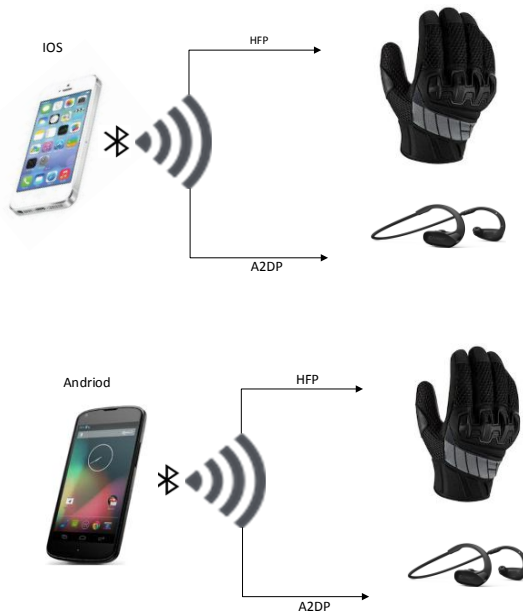
There are 4 operation modes with the device.

1. Re-connect Mode: Press and hold the power button (C) (reference diagram below) for about 5 seconds, the LED may give 3 short blinking and then stopped, which means the connection to a previous paired phone has been restored. At this point, you can release the button to leave the connection unchanged, or you can hold the button for additional 15 seconds, which will force the device into the advertising mode for an new connection.
2. Advertising Mode: Press and hold the power button (C) for about 20 seconds continuously, until a green LED enters a fast flashing mode in the LED perforation (A), the unit enters a bluetooth advertising mode. If you turn on the bluetooth on your phone, you should see the "BW Glove". You can select the device and make the bluetooth connection.
3. Paired Mode: Once the connection is made between the device and phone, the system enters a paired mode. The LED blinks once every 10 seconds in this mode. You should see the following status at the bluetooth setup screen on your phone:

"BW Glove connected" or "BWG01AB connected"

If the distance between the 2 devices is too far, the bluetooth connection will drop. The device and phone will need to re-connect in order to be functional.

4. To power off the unit, press and hold the power button (C) for about 4-5 seconds, until the green LED (A) gives out a long flash, which marks a power off mode.



Multiple BT connections

Optional, you can pair your stereo headphone to your mobile phone at the same time and the audio will be routed to the headphone.

The diagram left illustrates how Bluetooth on your mobile phone interfaces with SGSystem and your headset if the headset is used.

Voice Commands

With the SGSystem you will be able to answer or reject incoming call, as well as control most of the features of the music Apps on your mobile phone using the Voice Command listed below.

The SGSystem voice command feature is structured into 2 groups of commands: **trigger** and **action commands**. Trigger word is a word that initiate voice command process and prevent the process from forwarding unintentional command. Action commands are mobile device functions that are transmitted from SGSystem to the mobile device. For instance, to start music playing on your mobile device you would use the voice command “**Ari...Play Music**”, note: that the ellipsis (...) represents a slight pause between the trigger word and action command.

Trigger Word	Action Command	Description
<u>Ok Ari</u>	play music	command the phone to either resume or start play of songs spawned by a music app
	skip song	command the phone to skip play of the current song and start play of the new one
<u>Ari</u>	go back	commands the phone go back to the beginning of the current song
	stop music	command the phone to stop/pause playback of the song
	volume up	command the phone to increase volume
	volume down	command the phone to decrease volume
	answer	Command phone to answer the incoming call
	hang-up	command the phone to hang up the call
	ignore call	Command the phone to ignore incoming call; caller is routed to VM or disconnection

Here is an example:

Initially, you will need to pair the SGSystem with your mobile device. Please place the 2 device close within 5 feet and follow the simple steps below.

Turn on the device into the advertising mode and then pair it with the phone.

Follow these to control the music app:

1. Startup the music app that you wish to listen to
2. Press pause music on the music app.
3. Configure the setting of the music app to 'allow external device to start playback'.
4. Now, command Ari to Play/stop Music and etc.

When there is an incoming call, the Music App audio is suspended, and resume after incoming call ends.

To answer incoming call, issue the voice command “Ari...Answer Phone”. After call has ended, issue the command “Ari...hang up” to end call.

Troubleshooting

If voice- commands aren't working, please do following steps:

1. Power module OFF and ON again.
2. Check to make sure your mobile device is paired with SGSystem.
3. Repeat the voice command
4. Battery voltage maybe insufficient, recharge battery
5. Too much distance between the 2 devices, try moving the devices closer together
6. Unpair/disconnect and retry pairing if necessary.

Terms and Conditions

By using this product, you are agreeing to **One61 Studio**'s terms and conditions, available at www.bioworldcorp.com and on the supplied warranty information card.

FCC Declaration

This equipment has been tested and found to comply with the limits for a Class B digital device, pursuant to part 15 of the FCC Rules. These limits are designed to provide reasonable protection against harmful interference in a residential installation. This equipment generates uses and can radiate radio frequency energy and, if not installed and used in accordance with the instructions, may cause harmful interference to radio communications. However, there is no guarantee that interference will not occur in a particular installation. If this equipment does cause harmful interference to radio or television reception, which can be determined by turning the equipment off and on, the user is encouraged to try to correct the interference by one or more of the following measures:

- Reorient or relocate the receiving antenna.
- Increase the separation between the equipment and receiver.
- Connect the equipment into an outlet on a circuit different from that to which the receiver is connected.
- Consult the dealer or an experienced radio/TV technician for help
- Changes or modifications not expressly approved by the party responsible for compliance could void the user's authority to operate the equipment.

This device complies with Part 15 of the FCC Rules. Operation is subject to the following two conditions:

(1) This device may not cause harmful interference, and

(2) This device must accept any interference received, including interference that may cause undesired operation.

IC Declaration

This device complies with Industry Canada licence-exempt RSS standard(s). Operation is subject to the following two conditions:

1. This device may not cause interference, and
2. This device must accept any interference, including interference that may cause undesired operation of the device.

Le présent appareil est conforme aux CNR d'Industrie Canada applicables aux appareils radio exempts de licence. L'exploitation est autorisée aux deux conditions suivantes :

1. l'appareil ne doit pas produire de brouillage, et
2. l'utilisateur de l'appareil doit accepter tout brouillage radioélectrique subi, même si le brouillage est susceptible d'en compromettre le fonctionnement.