

说明书

User manual

适用 Apply: 蓝牙设备 Bluetooth Devices

名称 Appellation: 蓝牙对箱 True wireless speaker

型号 Model: D08

产品规格参数

| No. | 项目 | 参数特性 Specifications |
|-------------|--------------------------------|------------------------------|
| | 型号 Model | D08 |
| 1.00 | 一般参数 General parameters | |
| 1.01 | 产品类型 Type | 蓝牙对箱 |
| 1.02 | 配对名 Pairing Name | D08 |
| 1.04 | 产品净重 N.W. | 165g (单个) 330g(双个) |
| 1.05 | 产品尺寸 Products size | Φ 65.8x85mm |
| 1.06 | 声道系统 Track system | 立体声 Stereo |
| 1.07 | 蓝牙方案 Bluetooth solutions | 杰里 AC6905C |
| 1.08 | 蓝牙版本 Bluetooth version | Bluetooth V4..2 |
| 1.09 | 发射功率 Emissive power | Class 2 (-6dbm - +4dbm) |
| 1.10 | 工作频段 Working frequency | 2.4G ISM 波段 (2.402-2.480GHZ) |
| 1.11 | 收发距离 Bluetooth range | 10M |
| 2.00 | 喇叭参数 Horn parameter | |
| 2.01 | 磁铁 Magnet | Φ 15.5*5 |
| 2.02 | 额定功率 Rated power | 3W |
| 2.03 | 共振频率 F0 | 150± 20%Hz Free air |
| 2.04 | 灵敏度 Sensitivity | 105+/-3DB |
| 2.05 | 频率范围 Frequency | 110Hz-20kHz |
| 2.07 | 欧姆数 Ohm number | 4 Ω |
| 2.07 | 发声单元 Sound generating unit | 45mm |
| 3.00 | 电池参数 Battery parameters | |
| 3.01 | 电池尺寸 Bass Battery Size | 聚合物锂电池 603443 |
| 3.02 | 电池额定容量 Aggregate capability | 800mAh, 3.7V |
| 3.03 | 电池充电时间 Charging time | 标准冲电 (2.5 hours) |
| 3.04 | 电池寿命 Battery life | ≥300 cycles |
| 3.05 | 工作温度 working temperature | 0~45 °C |
| 3.06 | 存储湿度 Storage temperature | ≤75%RH |
| 3.07 | 工作时间 Working hours | 5 小时 |
| 3.08 | 电池寿命 Battery life | ≥300 cycles |
| 3.09 | 电池重量 Battery N.W | 18G |
| 4.00 | 咪头 IMI | |
| 4.01 | 灵敏度 sensitivity | '42 ± 3DB |
| 4.02 | 尺寸 size | 4015 全指向咪头 |
| 5.00 | 充电线 Charging cable | 黑色 micro5pin 面条线长 200mm |

产品使用

开机/关机

- 开机: 关机状态下,长按电源键开机 3 秒, 伴有提示音, 蓝灯快闪。
- 关机: 开机状态下,长按电源键 3 秒, 伴有提示音, 蓝灯熄灭。

Power on/Power off

Power on: Press and hold MFB for 3 seconds, the blue LED light flashes fast accompanied by a “Beep” prompt tone.

Power off: Press and hold MFB for 3 seconds, the blue LED light goes out accompanied by a “Beep” prompt tone.

配对

- 1 • 音箱与音箱配对: 两台音箱开机状态下 5 秒后则会自动分配主副机进行配对, 配对成功后蓝灯长亮并伴有提示音。
- 2 • 音箱与手机配对: 两个音箱配对后, 打开手机蓝牙搜索 “D08” 进行连接, 连接成功后蓝灯长亮并伴有提示音。

备注:

- 1 • 不分主副机, 任意两台音箱会自动分配主副机进行无线配对连接。
- 2 • 音箱开机后若 5 分钟内没有配对, 则自动关机。
- 3 • 苹果系统支持电量显示。

Paring:

- 1 • Speakers pairing: Two speakers will pairing with each other automatically after 5 seconds if powered on. Speakers will deliver "beep" prompt tone and flash blue light if paired successfully.
- 2 • Speakers pair with smart phones: After finishing last step, select “Air Box” in BT list of your smartphone to get paired. Then the blue LED s keep on accompanied by a “Beep” prompt tone, which means successful pairing.

Note :

- 1 • Speakers automatically paired with each other, and one of them will be the primary device.
- 2 • Speakers will power off in 5 minutes without any connection.
- 3 • Support iPhone battery indicate.

播放/通话:

1. 音乐播放/暂停: 单击电源键/手动打开手机音乐。
2. 电话接听/拒听: 来电时/通话时单击开关键接听/拒听。

Music playing/Make calls:

1. Music play/pause: After paired, press MFB to play/pause music. You can also play or pause your music on your phone.
2. Answer/Reject calls: When call is coming, press the MFB to answer it; or press and hold the MFB for 2 seconds to reject it.

充电:

1. 音箱充电: 充电时红灯亮, 充电满后红灯熄灭。

Charge:

1. Charging: Red LED lights keep on.
2. Charged: Red LED lights go out.

音箱 LED 灯指示状态

| | |
|---------|------|
| 开机 | 蓝灯闪烁 |
| 关机 | 蓝灯熄灭 |
| 配对 | 蓝灯长亮 |
| 待机 (配对) | 蓝灯长亮 |
| 来电/打电话 | 蓝灯闪烁 |
| 通话 | 蓝灯闪烁 |
| 播放音乐 | 蓝灯闪烁 |
| 充电 | 红灯长亮 |
| 充满电 | 红灯熄灭 |

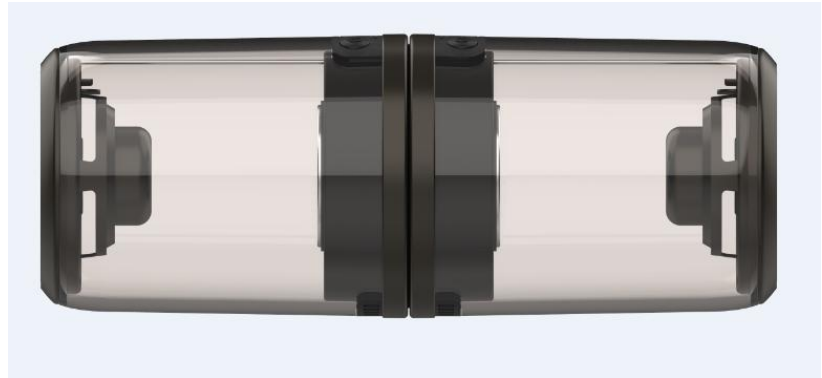
Speakers LED Indicator

| | |
|-------------------------|----------------------------------|
| Power on | Blue LED flash |
| Power off | Blue LED close |
| Pairing | Blue LED keeps on |
| Standby (paired) | Blue LED keeps on |
| Incoming call / Dialing | Blue LED flash |
| Talking / Playing music | Blue LED flash |
| Charging | Red lighting |
| Full charged | Blue LED off |
| Speakers low battery | Red flashes once every 6 seconds |

产品包装

| | |
|---------------|---------------|
| Dimension | Φ65x80mm |
| Product G.W | 410G |
| Color box | 213*71*71MM |
| Carton | 445*370*375MM |
| QTY/CTN | 50PCS/CTN |
| G.W | 21.5KGS |
| Certification | CE/FCC/MSDS/ |
| Patent | CN |

产品图片



FCC Statement

This equipment has been tested and found to comply with the limits for a Class B digital device, pursuant to Part 15 of the FCC Rules. These limits are designed to provide reasonable protection against harmful interference in a residential installation. This equipment generates uses and can radiate radio frequency energy and, if not installed and used in accordance with the instructions, may cause harmful interference to radio communications. However, there is no guarantee that interference will not occur in a particular installation. If this equipment does cause harmful interference to radio or television reception, which can be determined by turning the equipment off and on, the user is encouraged to try to correct the interference by one or more of the following measures:

- Reorient or relocate the receiving antenna.
- Increase the separation between the equipment and receiver.
- Connect the equipment into an outlet on a circuit different from that to which the receiver is connected.
- Consult the dealer or an experienced radio/TV technician for help.

This device complies with part 15 of the FCC Rules. Operation is subject to the following two conditions:

- (1) This device may not cause harmful interference, and
 - (2) this device must accept any interference received, including interference that may cause undesired operation.
- Changes or modifications not expressly approved by the party responsible for compliance could void the user's authority to operate the equipment.