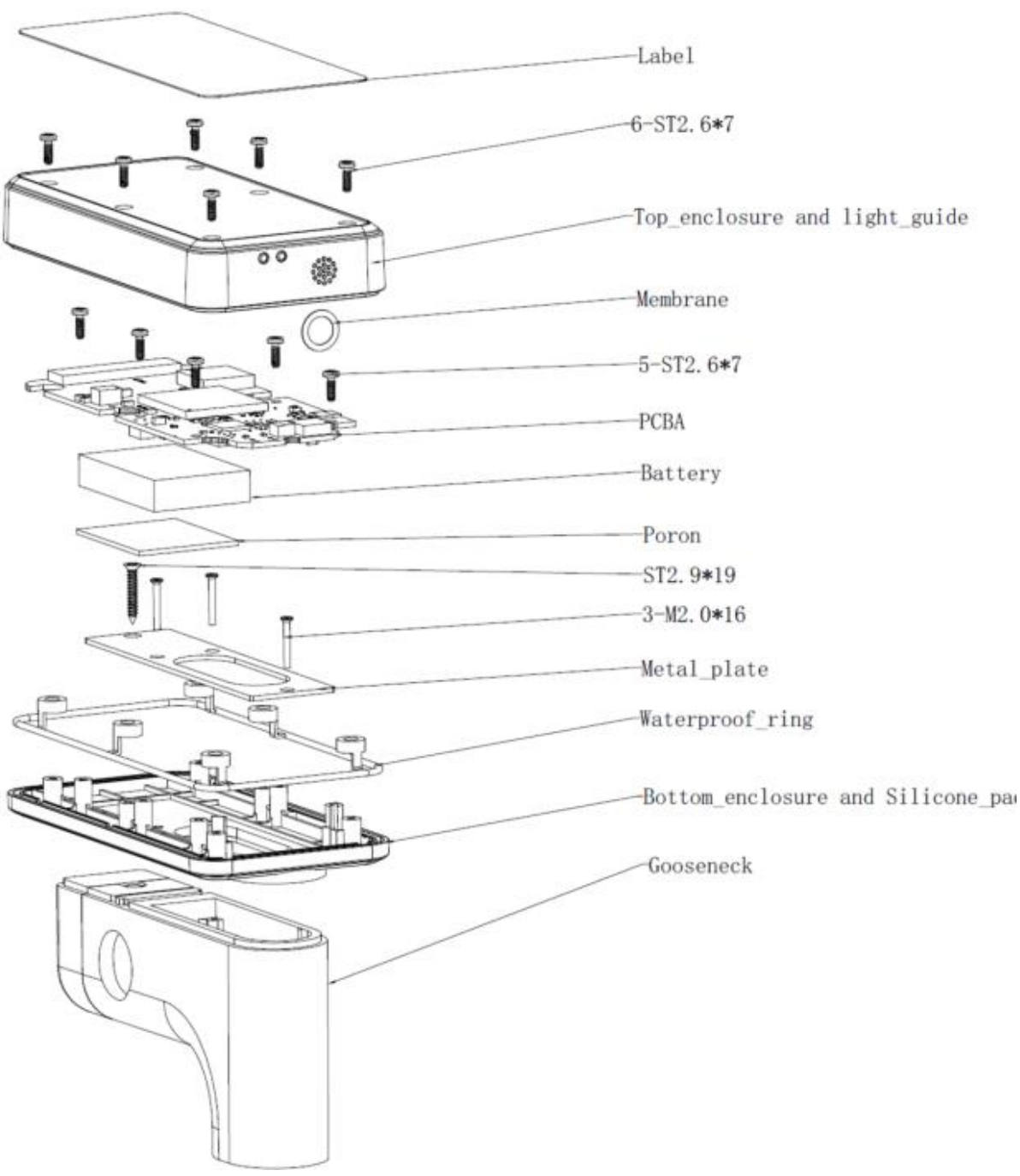


# Mobilogix

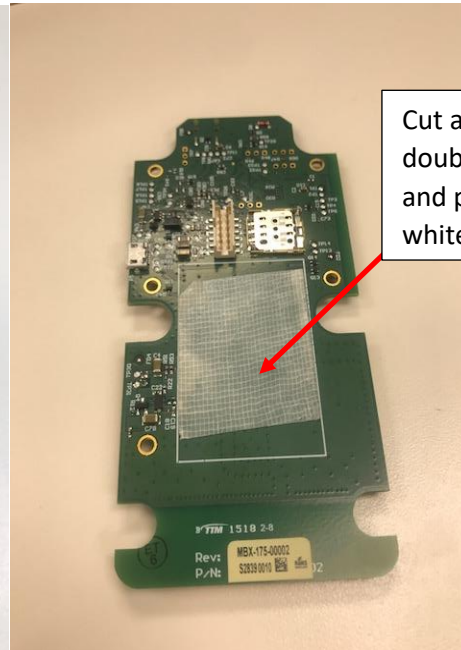
## ATD300S

**Module Assembly Summary:**



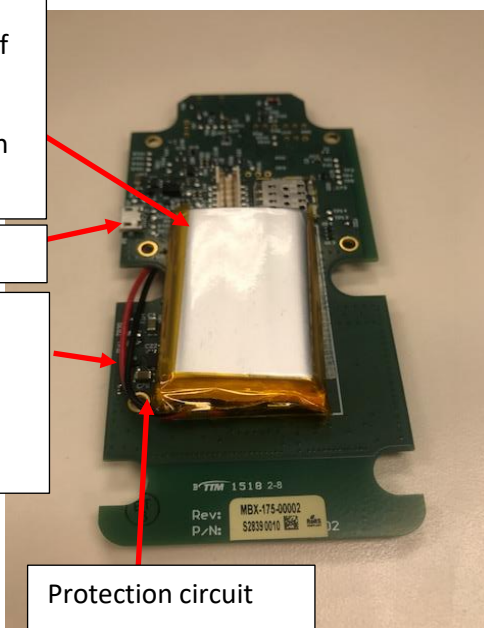


### Module Assembly Detail:



Cut a 45mm piece of double sided tape and place inside white rectangle

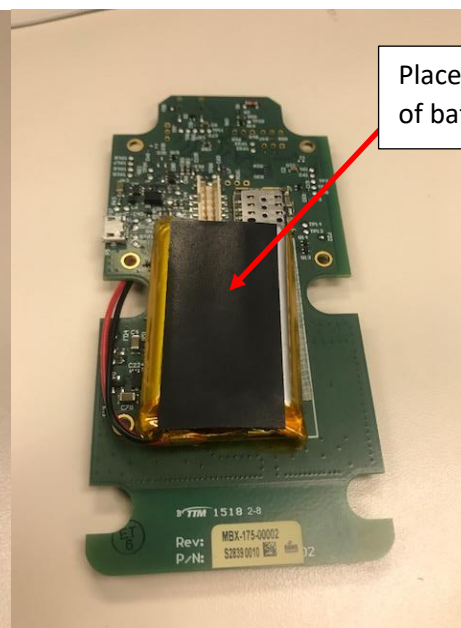
Place battery on double sided tape with protection circuit facing end of board.  
Keep battery within white rectangle



USB connector

Make sure wire leads are on the same side as USB connector

Protection circuit



Place foam on top of battery



Place metal plate inside groove located on bottom



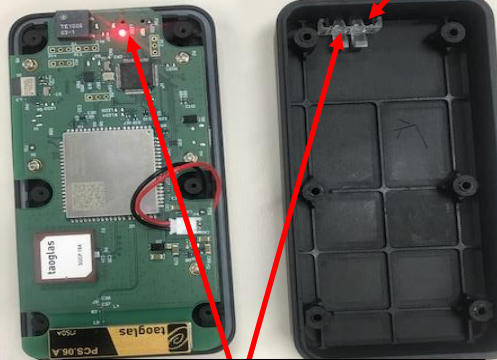
Bottom piece of enclosure

Place board with battery stack-up on bottom piece of enclosure. Secure with 5 screws.

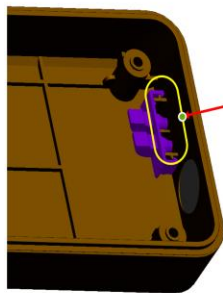


Don't plug in battery connector until PCB is screwed down

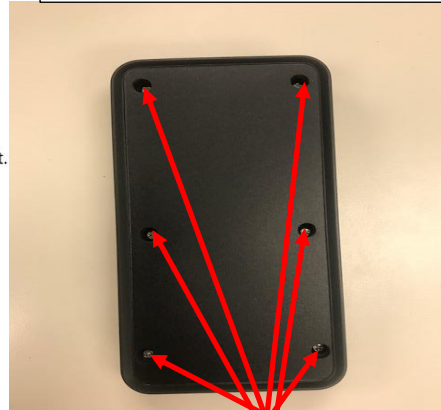
Light pipes



when putting enclosure together, light pipes go on top of PCB LEDs



Fill this slot with glue, local enclosure vendors can do it.



Use 6 of the same screws as used for PCB to secure enclosure



### FCC Interference Statement (Part 15.105 (b))

This equipment has been tested and found to comply with the limits for a Class B digital device, pursuant to Part 15 of the FCC Rules. These limits are designed to provide reasonable protection against harmful interference in a residential installation. This equipment generates uses and can radiate radio frequency energy and, if not installed and used in accordance with the instructions, may cause harmful interference to radio communications. However, there is no guarantee that interference will not occur in a particular installation. If this equipment does cause harmful interference to radio or television reception, which can be determined by turning the equipment off and on, the user is encouraged to try to correct the interference by one of the following measures:

Reorient or relocate the receiving antenna.

Increase the separation between the equipment and receiver.

Connect the equipment into an outlet on a circuit different from that to which the receiver is connected.

Consult the dealer or an experienced radio/TV technician for help.

### FCC Part 15 Clause 15.21

Changes or modifications not expressly approved by the party responsible for compliance could void the user's authority to operate the equipment.

### FCC Part 15.19(a) [interference compliance statement], unless the following statement is already provided on the device label

This device complies with part 15 of the FCC Rules. Operation is subject to the following two conditions: (1) This device may not cause harmful interference, and (2) this device must accept any interference received, including interference that may cause undesired operation.

### ISED RSS-Gen Notice

This device complies with Industry Canada's licence-exempt RSSs. Operation is subject to the following two conditions:

- (1) This device may not cause interference; and
- (2) This device must accept any interference, including interference that may cause undesired operation of the device.

Le présent appareil est conforme aux CNR d'Industrie Canada applicables aux appareils radio exempts de licence. L'exploitation est autorisée aux deux conditions suivantes :

- 1) l'appareil ne doit pas produire de brouillage;
- 2) l'appareil doit accepter tout brouillage radioélectrique subi, même si le brouillage est susceptible d'en compromettre le fonctionnement.

### FCC RF Exposure Guidance Statement

In order to comply with FCC/ISED RF Exposure requirements, this device must be installed to provide at least 20 cm separation from the human body at all times.

### ISED RF Exposure Guidance Statement

In order to comply with FCC/ISED RF Exposure requirements, this device must be installed to provide at least 20 cm separation from the human body at all times.

Afin de se conformer aux exigences d'exposition RF FCC / ISED, cet appareil doit être installé pour fournir au moins 20 cm de séparation du corps humain en tout temps.

### Powering ON and OFF



#### **Power ON**

- When battery is connected, the device automatically powers on. The device does not have a button or power switch. The ATD300S Asset Tracking Device will be mounted on top of a host device, which will supply power to charge the internal battery.

#### **Power OFF**

- When the ATD300S Asset Tracking Device is in an idle state, it enters into its lowest power consumption state, or low power mode.



**Key Hardware Components and Specifications**

<b>Hardware Components and Specifications</b>	
<b>Component/Spec</b>	<b>Description</b>
Quectel EC21-V modem	<ul style="list-style-type: none"><li>• Qualcomm MDM 9307 chipset</li><li>• LTE CAT1</li><li>• 3GPP Rel. 11</li><li>• FOTA</li><li>• Embedded GPS/GNSS</li></ul>
Antennas	Embedded Cellular/GNSS/Bluetooth
SIM card slot	3FF Verizon SIM
Power ON/OFF	Powered by Lithium Polymer battery
Battery	Rechargeable Lithium Polymer <ul style="list-style-type: none"><li>• 3.7V</li><li>• 2000mAh</li></ul>
Charging	Internal battery will be charged by host power supply
Operating temperature	-20°C to +85°C
Dimensions	138.50 x 69.50 x 31mm
Certifications	FCC/IC/Verizon

