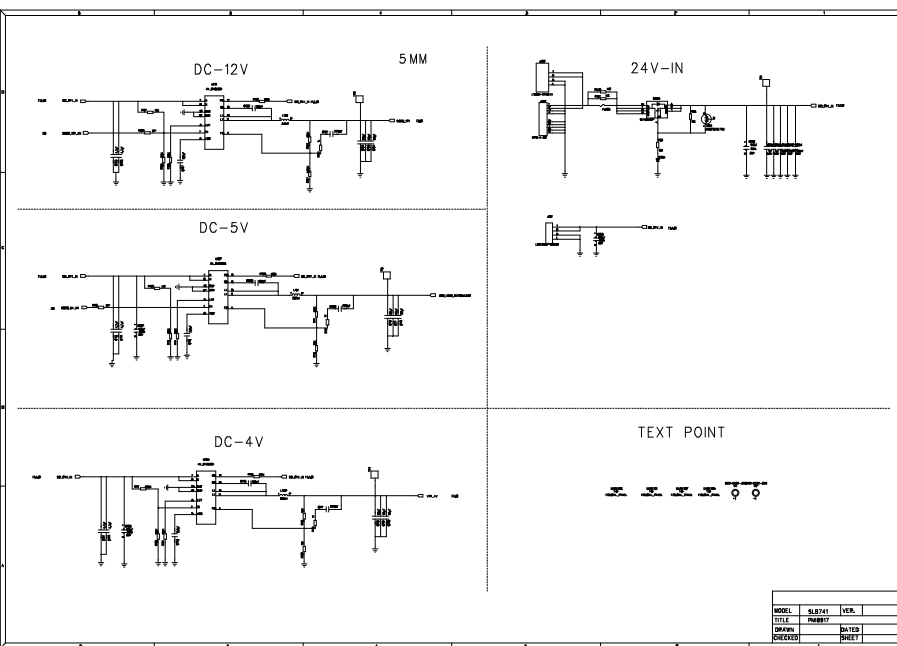
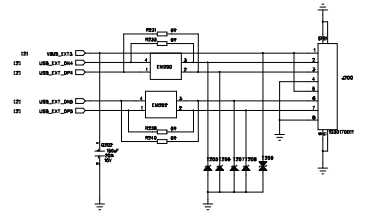
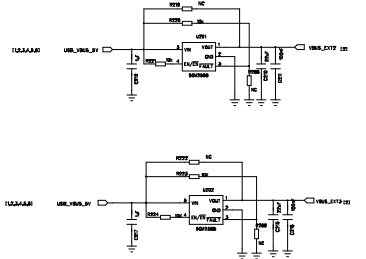
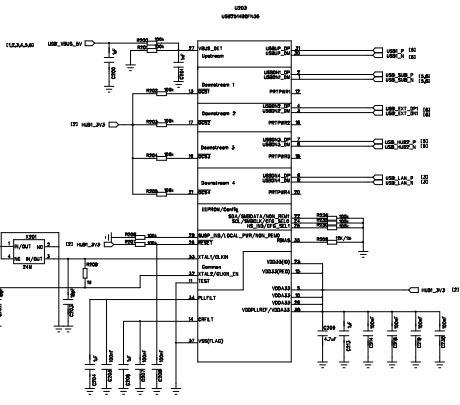


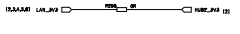
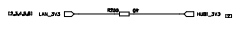
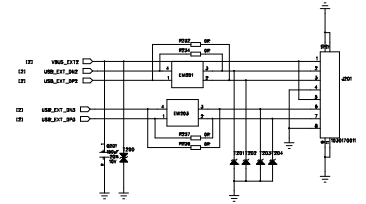
XXXXXXXXXXXXXXXXXXXX
XXXXXXXXXXXXXXXXXXXX



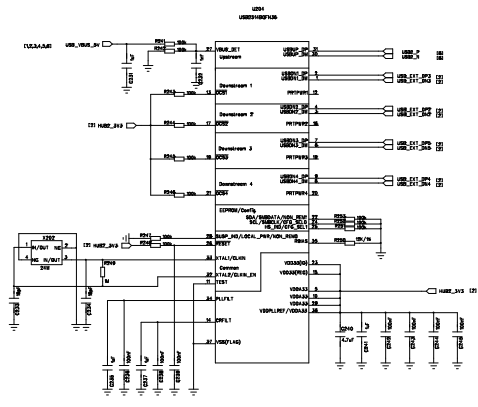
USB HUB



USB



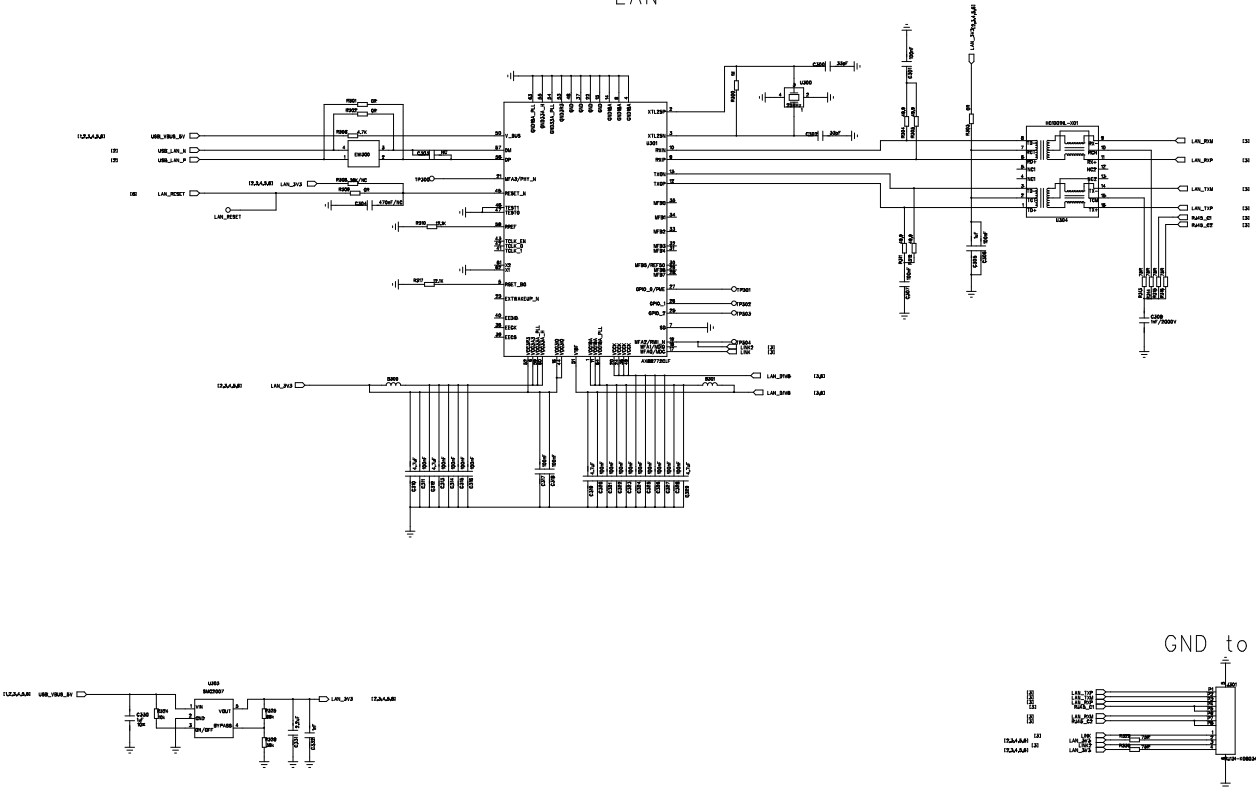
USB HUB



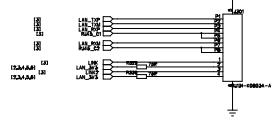
MODEL	SLB741	VER.	
TITLE	PM8917_CONTROL/CODEC		
DRAWN		DATED	
CHECKED		SHEET	

NOT TO BE USED, COPIED, REPRODUCED IN ANY MANNER OR IN ANY MEDIUM WITHOUT THE EXPRESS WRITTEN PERMISSION OF QUALCOMM.

LAN

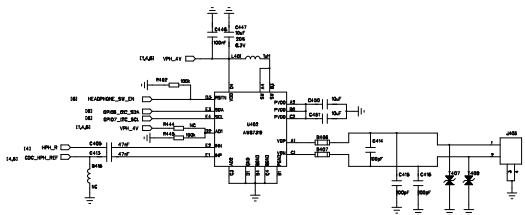


GND to CGND

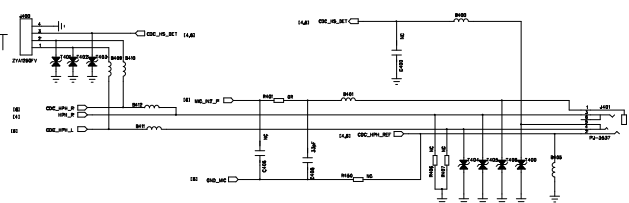


MODEL	SLB741	VER.	V1.00
TITLE	PM8917_POWER		
DRAWN		DATED	
CHECKED		SHEET	

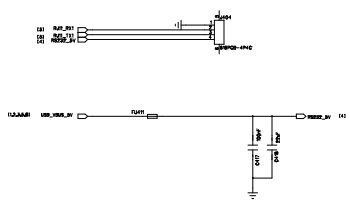
Audio PA



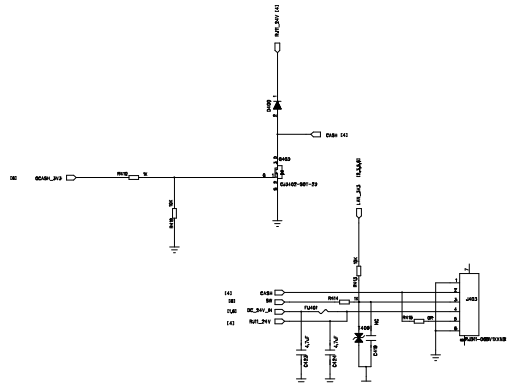
LINE_OUT



RJ11 CONNECTOR



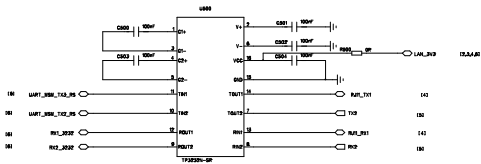
RJ12 CONNECTOR



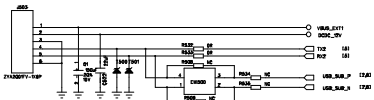
This is preliminary version, for reference only

MODEL	SLB741	VER.	V1.00
TITLE	MSM8917_CONTROL/RF/MIPI		
DRAWN		DATED	
CHECKED		SHEET	

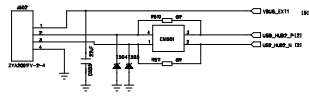
RS232



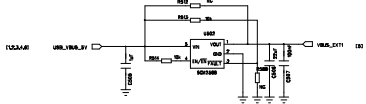
6PIN USB/UART



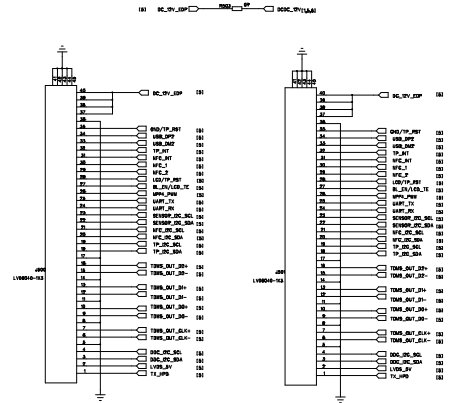
4PIN USB



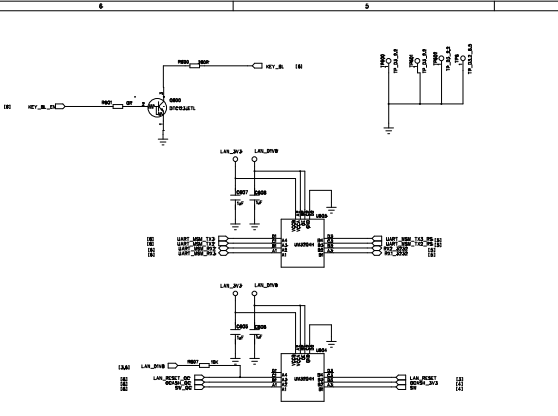
Loadswitch



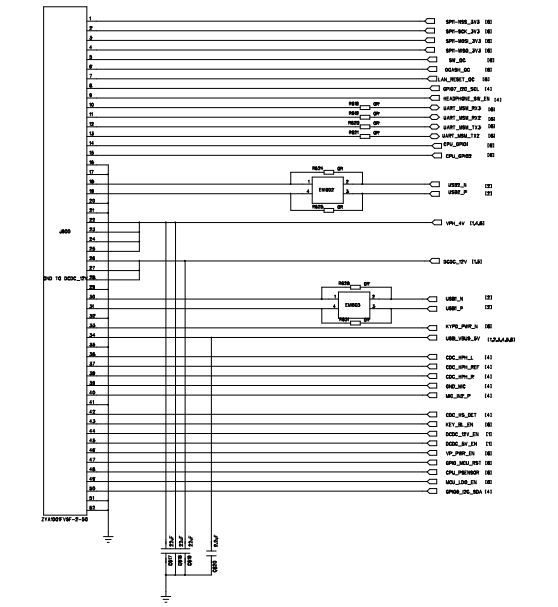
40PIN HDMI



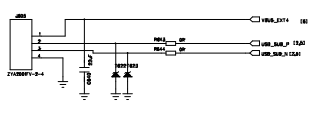
MODEL	SLB741	VER.	V1.00
TITLE	MSM8917_GPIO/GND	DATED	
DRAWN		CHECKED	
CHECKED		SHEET	



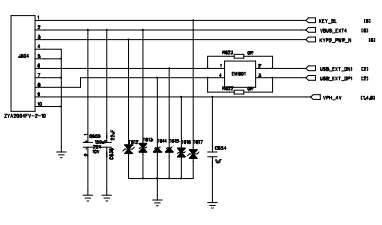
connect to main board



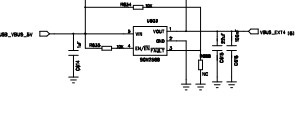
4PIN USB



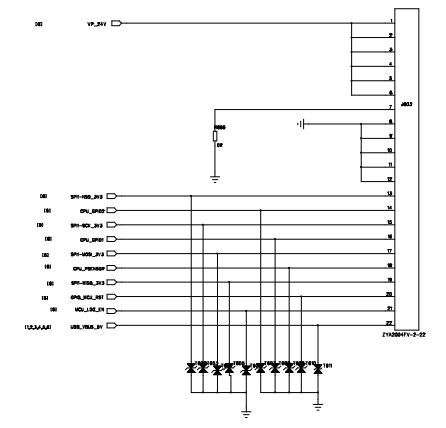
Power KEY board



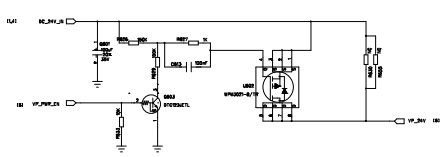
Loadswitch



Print_CONNECTOR



PMOS



MODEL	SLB741	VER.	V1.00
TITLE	MSMB917_POWER		
DRAWN		DATED	
CHECKED		SHEET	