



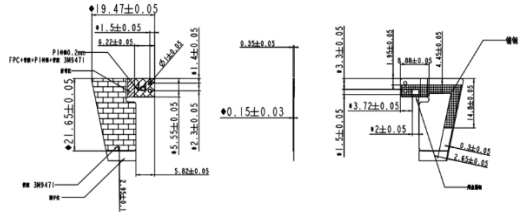
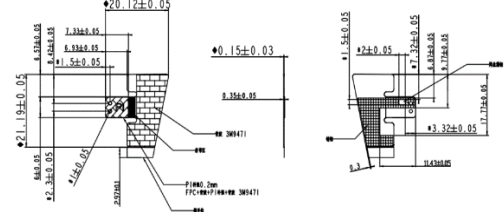
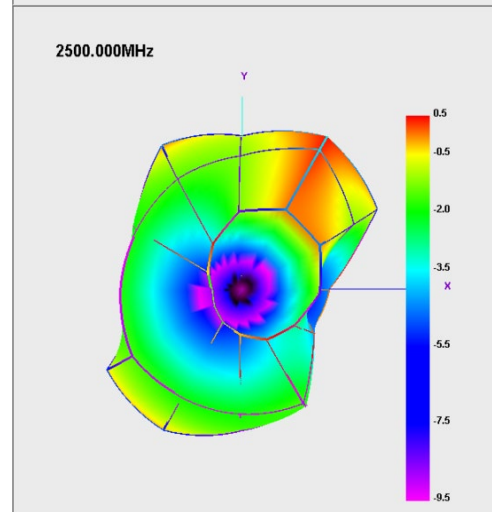
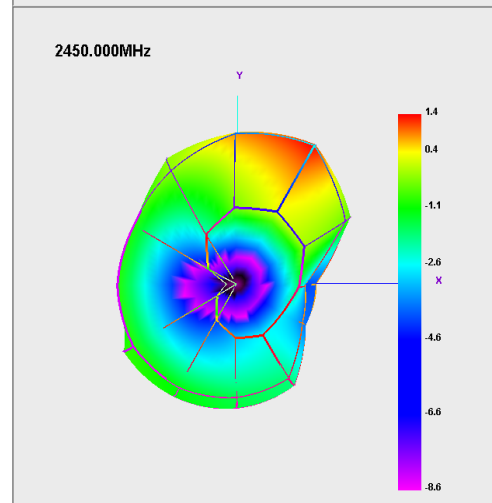
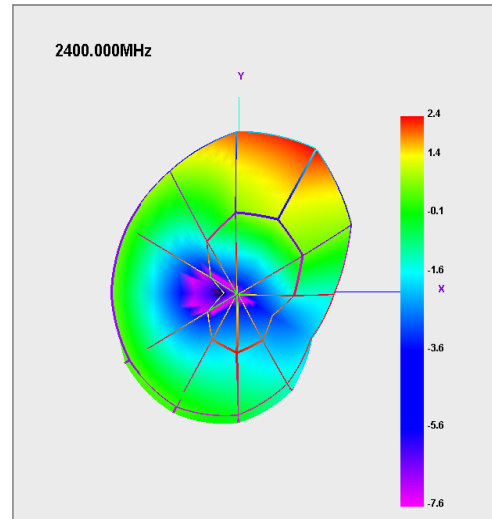


Antenna Specification

Antenna Type	Antenna0:	PIFA																																																																																																																																																																																
	Antenna1:	PIFA																																																																																																																																																																																
Antenna Photographs	Antenna0:  	Antenna1:  																																																																																																																																																																																
Antenna Size	Antenna0: 	Antenna1: 																																																																																																																																																																																
Antenna Gain&Efficiency	Antenna0: <table border="1" style="width: 100%; border-collapse: collapse; text-align: center;"> <thead> <tr style="background-color: #ADD8E6;"> <th>Frequency (MHz)</th> <th>Gain (dBi)</th> <th>Efficiency (dB)</th> <th>Efficiency (%)</th> </tr> </thead> <tbody> <tr><td>2400</td><td>1.7</td><td>-2.51</td><td>56.06</td></tr> <tr><td>2405</td><td>1.63</td><td>-2.58</td><td>55.17</td></tr> <tr><td>2410</td><td>1.57</td><td>-2.62</td><td>54.71</td></tr> <tr><td>2415</td><td>1.42</td><td>-2.77</td><td>52.79</td></tr> <tr><td>2420</td><td>1.33</td><td>-2.87</td><td>51.68</td></tr> <tr><td>2425</td><td>1.38</td><td>-2.83</td><td>52.09</td></tr> <tr><td>2430</td><td>1.24</td><td>-3.05</td><td>49.55</td></tr> <tr><td>2435</td><td>1.25</td><td>-3.1</td><td>49.01</td></tr> <tr><td>2440</td><td>1.43</td><td>-2.97</td><td>50.44</td></tr> <tr><td>2445</td><td>1.4</td><td>-3.08</td><td>49.18</td></tr> <tr><td>2450</td><td>1.2</td><td>-3.35</td><td>46.21</td></tr> <tr><td>2455</td><td>1.23</td><td>-3.31</td><td>46.66</td></tr> <tr><td>2460</td><td>1.17</td><td>-3.32</td><td>46.54</td></tr> <tr><td>2465</td><td>1.07</td><td>-3.37</td><td>46.04</td></tr> <tr><td>2470</td><td>0.99</td><td>-3.37</td><td>46.02</td></tr> <tr><td>2475</td><td>0.93</td><td>-3.3</td><td>46.75</td></tr> <tr><td>2480</td><td>0.92</td><td>-3.32</td><td>46.54</td></tr> <tr><td>2485</td><td>0.99</td><td>-3.21</td><td>47.71</td></tr> <tr><td>2490</td><td>1.07</td><td>-3.08</td><td>49.17</td></tr> <tr><td>2495</td><td>0.93</td><td>-3.26</td><td>47.22</td></tr> <tr><td>2500</td><td>0.9</td><td>-3.26</td><td>47.24</td></tr> </tbody> </table>	Frequency (MHz)	Gain (dBi)	Efficiency (dB)	Efficiency (%)	2400	1.7	-2.51	56.06	2405	1.63	-2.58	55.17	2410	1.57	-2.62	54.71	2415	1.42	-2.77	52.79	2420	1.33	-2.87	51.68	2425	1.38	-2.83	52.09	2430	1.24	-3.05	49.55	2435	1.25	-3.1	49.01	2440	1.43	-2.97	50.44	2445	1.4	-3.08	49.18	2450	1.2	-3.35	46.21	2455	1.23	-3.31	46.66	2460	1.17	-3.32	46.54	2465	1.07	-3.37	46.04	2470	0.99	-3.37	46.02	2475	0.93	-3.3	46.75	2480	0.92	-3.32	46.54	2485	0.99	-3.21	47.71	2490	1.07	-3.08	49.17	2495	0.93	-3.26	47.22	2500	0.9	-3.26	47.24	Antenna1: <table border="1" style="width: 100%; border-collapse: collapse; text-align: center;"> <thead> <tr style="background-color: #ADD8E6;"> <th>Frequency (MHz)</th> <th>Gain (dBi)</th> <th>Efficiency (dB)</th> <th>Efficiency (%)</th> </tr> </thead> <tbody> <tr><td>2400</td><td>1.45</td><td>-2.76</td><td>52.96</td></tr> <tr><td>2405</td><td>1.46</td><td>-2.83</td><td>52.06</td></tr> <tr><td>2410</td><td>1.43</td><td>-2.93</td><td>50.95</td></tr> <tr><td>2415</td><td>1.38</td><td>-3.03</td><td>49.77</td></tr> <tr><td>2420</td><td>1.47</td><td>-2.98</td><td>50.39</td></tr> <tr><td>2425</td><td>1.53</td><td>-2.92</td><td>51.07</td></tr> <tr><td>2430</td><td>1.57</td><td>-2.97</td><td>50.52</td></tr> <tr><td>2435</td><td>1.8</td><td>-2.77</td><td>52.81</td></tr> <tr><td>2440</td><td>1.99</td><td>-2.63</td><td>54.52</td></tr> <tr><td>2445</td><td>2.07</td><td>-2.63</td><td>54.59</td></tr> <tr><td>2450</td><td>2.01</td><td>-2.76</td><td>52.94</td></tr> <tr><td>2455</td><td>2.1</td><td>-2.7</td><td>53.71</td></tr> <tr><td>2460</td><td>2.21</td><td>-2.62</td><td>54.7</td></tr> <tr><td>2465</td><td>2.3</td><td>-2.56</td><td>55.52</td></tr> <tr><td>2470</td><td>2.35</td><td>-2.54</td><td>55.7</td></tr> <tr><td>2475</td><td>2.47</td><td>-2.47</td><td>56.57</td></tr> <tr><td>2480</td><td>2.57</td><td>-2.39</td><td>57.66</td></tr> <tr><td>2485</td><td>2.7</td><td>-2.28</td><td>59.2</td></tr> <tr><td>2490</td><td>2.77</td><td>-2.22</td><td>60.01</td></tr> <tr><td>2495</td><td>2.72</td><td>-2.27</td><td>59.36</td></tr> <tr><td>2500</td><td>2.71</td><td>-2.23</td><td>59.78</td></tr> </tbody> </table>	Frequency (MHz)	Gain (dBi)	Efficiency (dB)	Efficiency (%)	2400	1.45	-2.76	52.96	2405	1.46	-2.83	52.06	2410	1.43	-2.93	50.95	2415	1.38	-3.03	49.77	2420	1.47	-2.98	50.39	2425	1.53	-2.92	51.07	2430	1.57	-2.97	50.52	2435	1.8	-2.77	52.81	2440	1.99	-2.63	54.52	2445	2.07	-2.63	54.59	2450	2.01	-2.76	52.94	2455	2.1	-2.7	53.71	2460	2.21	-2.62	54.7	2465	2.3	-2.56	55.52	2470	2.35	-2.54	55.7	2475	2.47	-2.47	56.57	2480	2.57	-2.39	57.66	2485	2.7	-2.28	59.2	2490	2.77	-2.22	60.01	2495	2.72	-2.27	59.36	2500	2.71	-2.23	59.78
Frequency (MHz)	Gain (dBi)	Efficiency (dB)	Efficiency (%)																																																																																																																																																																															
2400	1.7	-2.51	56.06																																																																																																																																																																															
2405	1.63	-2.58	55.17																																																																																																																																																																															
2410	1.57	-2.62	54.71																																																																																																																																																																															
2415	1.42	-2.77	52.79																																																																																																																																																																															
2420	1.33	-2.87	51.68																																																																																																																																																																															
2425	1.38	-2.83	52.09																																																																																																																																																																															
2430	1.24	-3.05	49.55																																																																																																																																																																															
2435	1.25	-3.1	49.01																																																																																																																																																																															
2440	1.43	-2.97	50.44																																																																																																																																																																															
2445	1.4	-3.08	49.18																																																																																																																																																																															
2450	1.2	-3.35	46.21																																																																																																																																																																															
2455	1.23	-3.31	46.66																																																																																																																																																																															
2460	1.17	-3.32	46.54																																																																																																																																																																															
2465	1.07	-3.37	46.04																																																																																																																																																																															
2470	0.99	-3.37	46.02																																																																																																																																																																															
2475	0.93	-3.3	46.75																																																																																																																																																																															
2480	0.92	-3.32	46.54																																																																																																																																																																															
2485	0.99	-3.21	47.71																																																																																																																																																																															
2490	1.07	-3.08	49.17																																																																																																																																																																															
2495	0.93	-3.26	47.22																																																																																																																																																																															
2500	0.9	-3.26	47.24																																																																																																																																																																															
Frequency (MHz)	Gain (dBi)	Efficiency (dB)	Efficiency (%)																																																																																																																																																																															
2400	1.45	-2.76	52.96																																																																																																																																																																															
2405	1.46	-2.83	52.06																																																																																																																																																																															
2410	1.43	-2.93	50.95																																																																																																																																																																															
2415	1.38	-3.03	49.77																																																																																																																																																																															
2420	1.47	-2.98	50.39																																																																																																																																																																															
2425	1.53	-2.92	51.07																																																																																																																																																																															
2430	1.57	-2.97	50.52																																																																																																																																																																															
2435	1.8	-2.77	52.81																																																																																																																																																																															
2440	1.99	-2.63	54.52																																																																																																																																																																															
2445	2.07	-2.63	54.59																																																																																																																																																																															
2450	2.01	-2.76	52.94																																																																																																																																																																															
2455	2.1	-2.7	53.71																																																																																																																																																																															
2460	2.21	-2.62	54.7																																																																																																																																																																															
2465	2.3	-2.56	55.52																																																																																																																																																																															
2470	2.35	-2.54	55.7																																																																																																																																																																															
2475	2.47	-2.47	56.57																																																																																																																																																																															
2480	2.57	-2.39	57.66																																																																																																																																																																															
2485	2.7	-2.28	59.2																																																																																																																																																																															
2490	2.77	-2.22	60.01																																																																																																																																																																															
2495	2.72	-2.27	59.36																																																																																																																																																																															
2500	2.71	-2.23	59.78																																																																																																																																																																															

Radiation Pattern:

Antenna0:



Antenna1:

