

承认书

SPECIFICATION FOR APPROVAL

客户名称 上海商米科技有限公司
Customer: Shanghai Sunmi Technology Co.,Ltd.

产品名称
Product Name: K2

规格描述 RG316 长600mm, SMA弯头内螺纹公头
Description: _____

料号 SH-044-001-OK-B
P/N: _____

发出日期 2020年03月16日
Approval Date: _____

核准 Approved	审核 Checked By	制作 Made By
张惠建	金鹏	吴小芳

客户承认

Customer Approve

核准 Approved	审核 Checked By	承办 Undertake By

地址(Address): 上海市浦东新区秀浦路 3408 号隽胜实业 203
Room 203, Junsheng Industrial, No. 3408 Xiupu Road, Pudong New Area,
Shanghai
电话(Tel.): 021-20905889
传真(Fax): 021-20905889

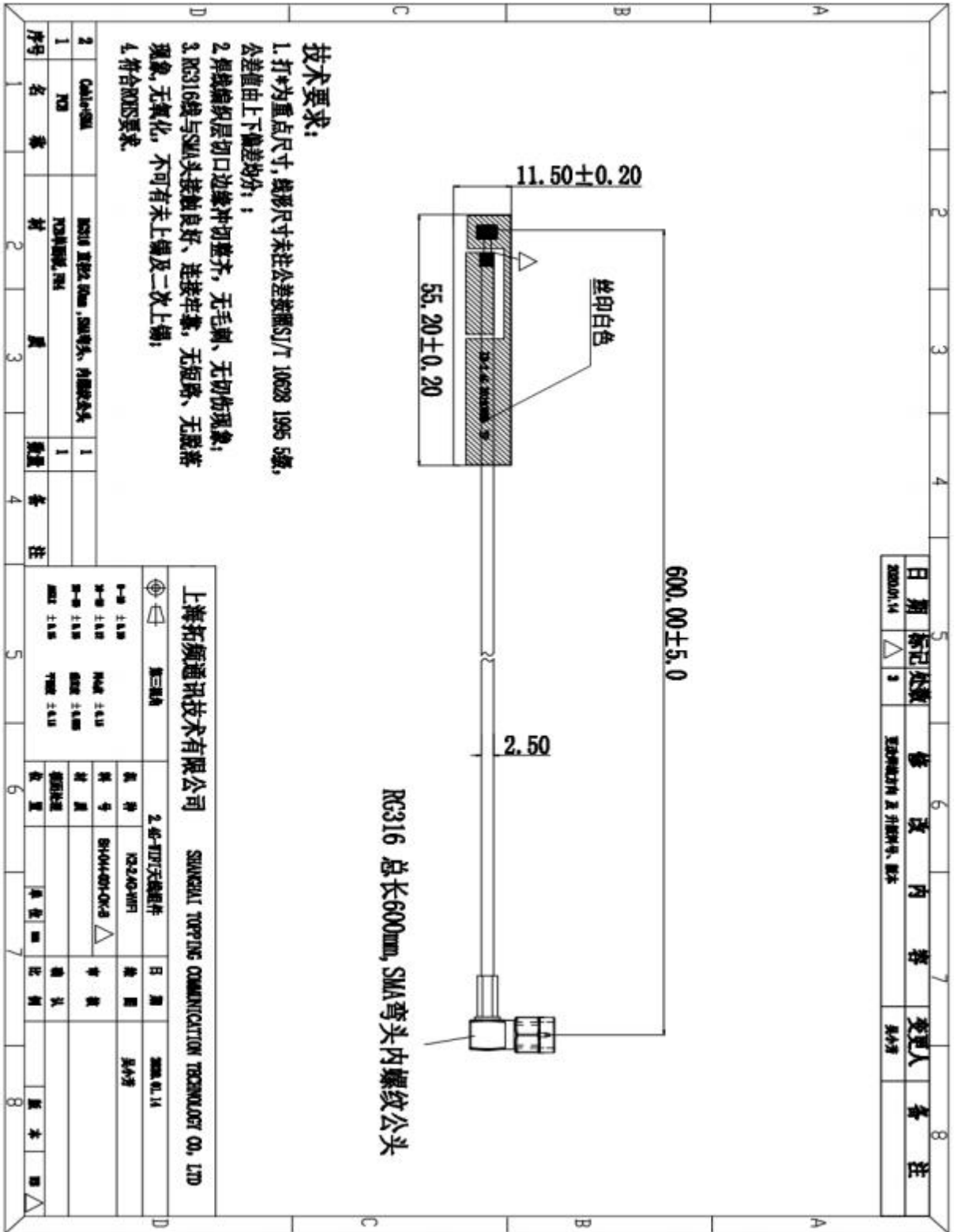
技术指标 (Technical Specifications)

频率范围 (Frequency Range)	2.4GHz/5GHz
增益 (Gain)	2.4G \leq 3.52dBi; 5.1G \leq 2.07dBi; 5.8G \leq 0.89dBi
电压驻波比 (VSWR)	\leq 5
输入阻抗 (Nominal Impedance)	50 Ω
最大输入功率 (W)	50
辐射方式 (Radiation Mode)	Omnidirectional
极化方式 (Polarization Mode)	Vertical
工作温度 (Operating temperature)	-30 $^{\circ}$ C~65 $^{\circ}$ C
储存温度 (Storage temperature)	-30 $^{\circ}$ C~75 $^{\circ}$ C

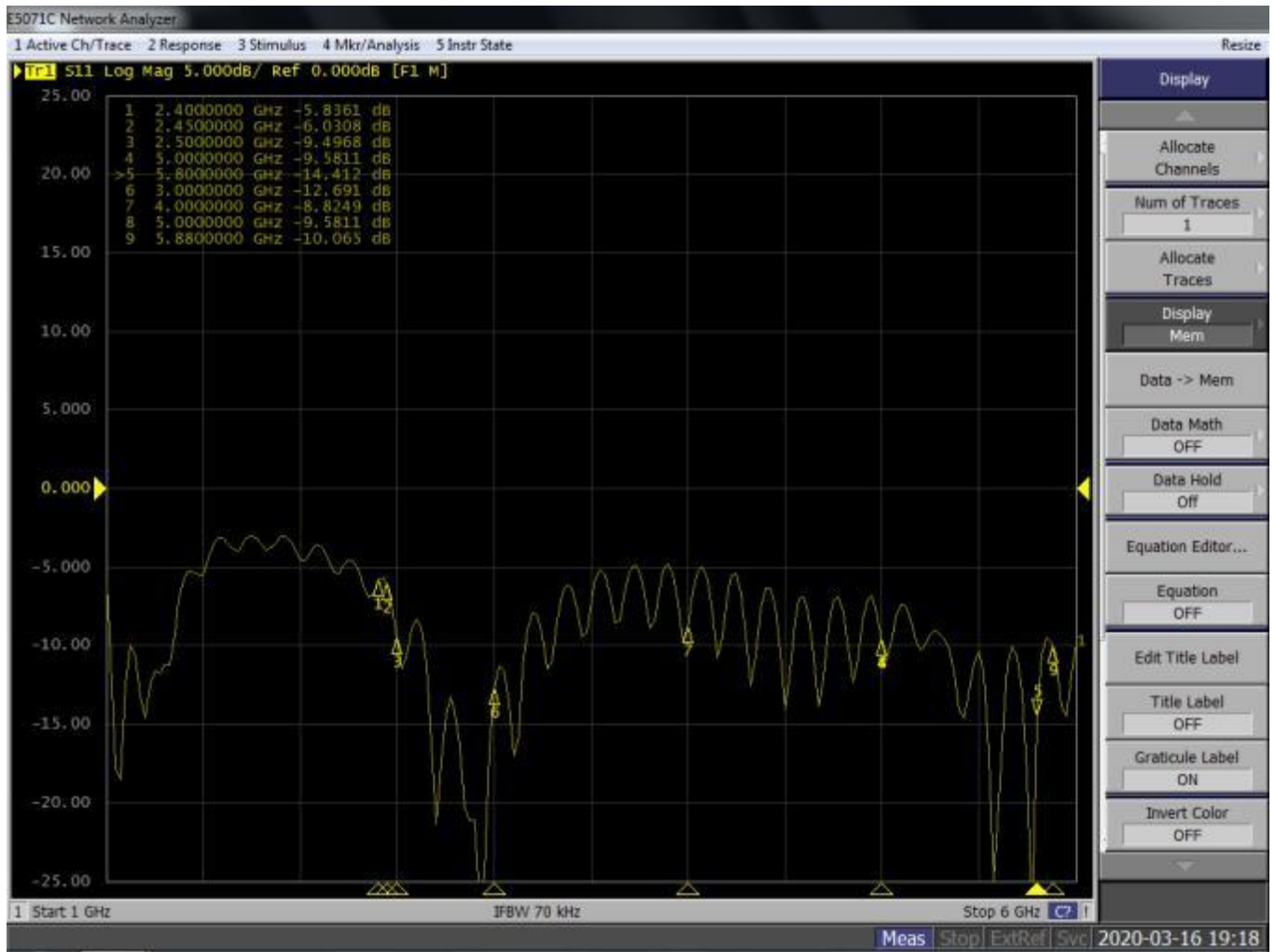
机械参数 (Mechanical Parameters)

天线尺寸 (Antenna Dimension)	55.20*11.50
线材 (Cable)	RG316
线长 (The length)	600mm
颜色 (Color)	Black

Antenna Drawing



VSWR



Efficiency&Gain

Frequency	Gain	Efficiency	Frequency	Gain	Efficiency	Frequency	Gain	Efficiency
频率(MHz)	增益(dBi)	效率	频率(MHz)	增益(dBi)	效率	频率(MHz)	增益(dBi)	效率
2400	3.15	33.74%	3650	2.07	32.96%	4900	2.48	42.77%
2450	3.25	23.29%	3700	1.55	28.33%	4950	2.76	38.41%
2500	3.52	29.65%	3750	0.88	30.82%	5000	2.72	36.42%
2550	3.04	32.50%	3800	1.01	39.31%	5050	2.55	40.72%
2600	2.68	31.22%	3850	1.25	35.15%	5100	2.39	36.41%
2650	2.42	41.51%	3900	1.69	35.52%	5150	2.07	38.74%
2700	2.7	53.72%	3950	2.09	41.12%	5200	1.44	43.40%
2750	2.99	54.43%	4000	2.76	38.70%	5250	0.52	42.79%
2800	2.66	61.12%	4050	3.05	33.37%	5300	0.9	39.54%
2850	2.72	58.52%	4100	3.68	41.28%	5350	1.32	38.75%
2900	2.48	58.96%	4150	3.86	45.49%	5400	1.8	39.29%
2950	2.35	59.01%	4200	2.95	38.48%	5450	1.55	42.04%
3000	2.68	53.88%	4250	2.31	34.72%	5500	0.31	37.76%
3050	2.9	53.90%	4300	1.79	39.73%	5550	1.4	41.06%
3100	2.7	55.20%	4350	2.51	42.39%	5600	0.77	37.90%
3150	2.75	46.78%	4400	2.72	31.24%	5650	0.74	39.65%
3200	2.84	33.97%	4450	3.09	33.68%	5700	0.89	36.36%
3250	2.78	40.25%	4500	3.39	41.22%	5750	0.77	40.54%
3300	2.34	39.17%	4550	3.68	35.79%	5800	0.6	35.57%
3350	2.93	34.18%	4600	3.74	36.15%	5850	0.09	38.31%
3400	2.87	32.95%	4650	3.36	39.18%	5900	0.55	36.32%
3450	3.01	40.62%	4700	2.73	37.58%	5950	-0.75	37.28%
3500	3.12	33.39%	4750	2.09	36.58%	6000	-0.3	35.69%
3550	3.13	30.80%	4800	1.6	39.39%			
3600	2.55	33.14%	4850	2.25	39.44%			

Radiation Pattern

