

D2s 2nd GEN POS System
 Model: L1591
 Input: 24V 2.5A
 FCC ID: 2AH25D252ND
 IC: 22621-D252ND
 SN: XXXXXXXXXXXXX
 Shanghai Sunmi Technology Co., Ltd. Made in China

This device complies with part 15 of the FCC Rules. Operation is subject to the following two conditions: (1) This device may not cause harmful interference, and (2) this device must accept any interference received, including interference that may cause undesired operation.

D2s 2nd GEN POS System
 Model: L1592
 Input: 24V 2.5A
 FCC ID: 2AH25D252ND
 IC: 22621-D252ND
 SN: XXXXXXXXXXXXX
 Shanghai Sunmi Technology Co., Ltd. Made in China

This device complies with part 15 of the FCC Rules. Operation is subject to the following two conditions: (1) This device may not cause harmful interference, and (2) this device must accept any interference received, including interference that may cause undesired operation.

D2s 2nd GEN POS System
 Model: L1593
 Input: 24V 2.5A
 FCC ID: 2AH25D252ND
 IC: 22621-D252ND
 SN: XXXXXXXXXXXXX
 Shanghai Sunmi Technology Co., Ltd. Made in China

This device complies with part 15 of the FCC Rules. Operation is subject to the following two conditions: (1) This device may not cause harmful interference, and (2) this device must accept any interference received, including interference that may cause undesired operation.

D2s 2nd GEN POS System
 Model: L1591
 Input: 24V 2.5A
 SN: XXXXXXXXXXXXX
 Shanghai Sunmi Technology Co., Ltd. Made in China

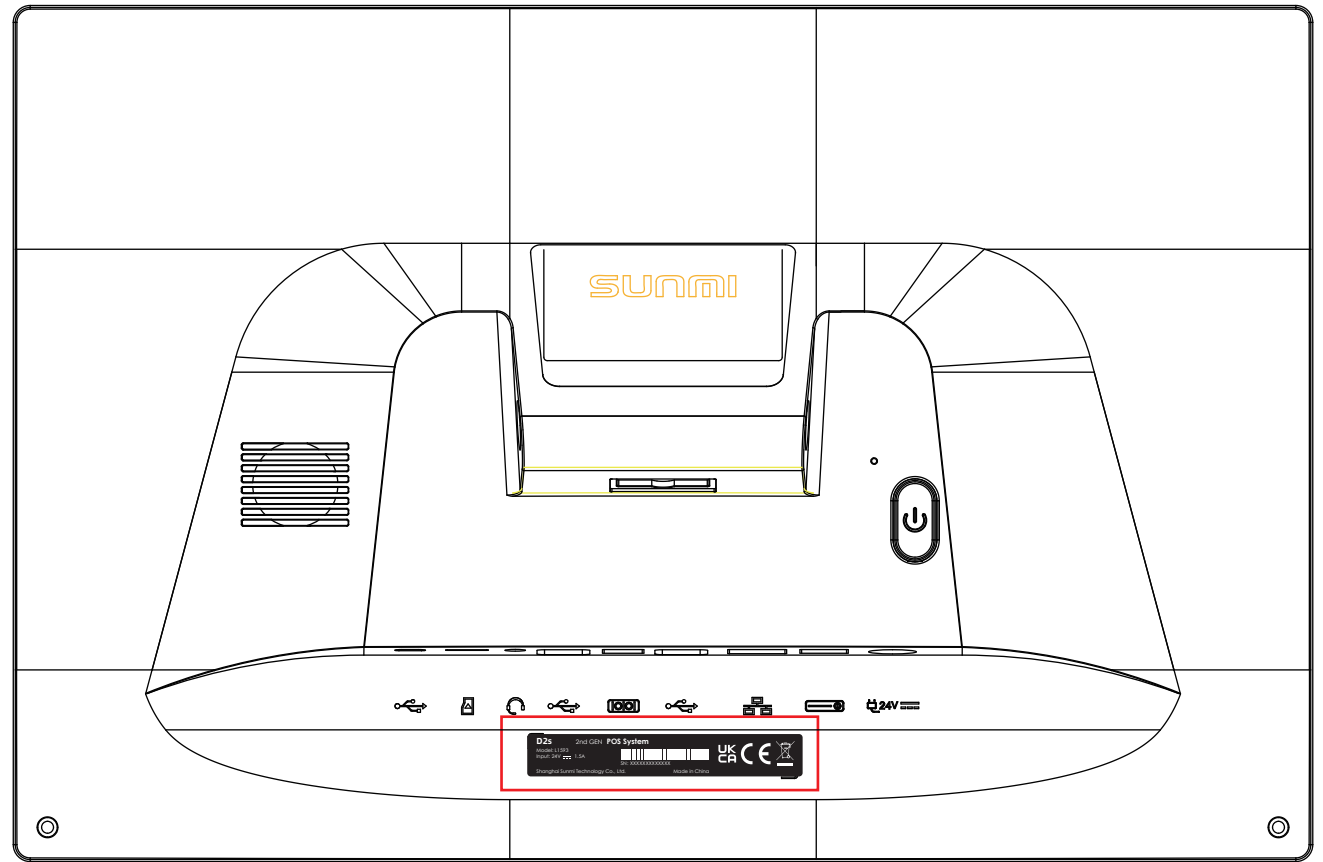
UK CA CE

D2s 2nd GEN POS System
 Model: L1592
 Input: 24V 2.5A
 SN: XXXXXXXXXXXXX
 Shanghai Sunmi Technology Co., Ltd. Made in China

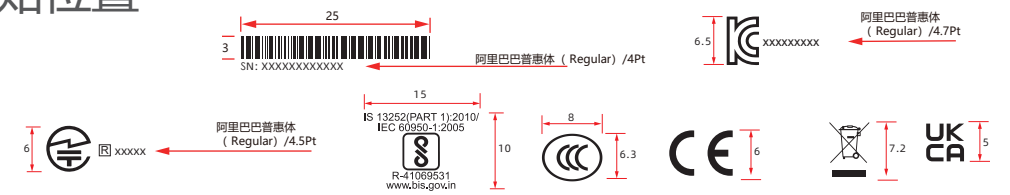
UK CA CE

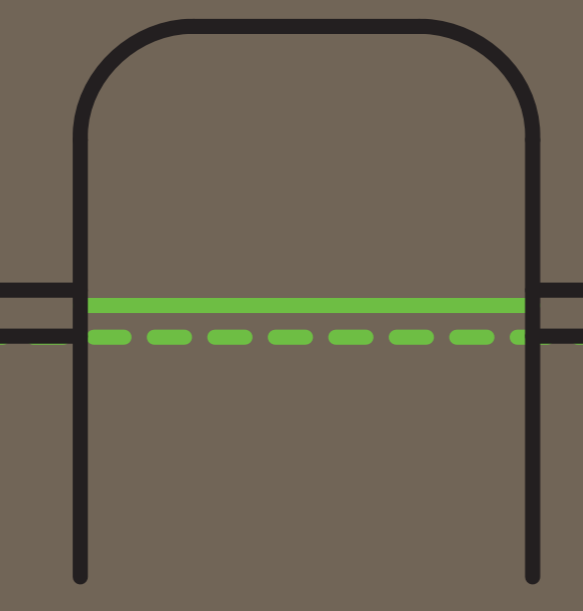
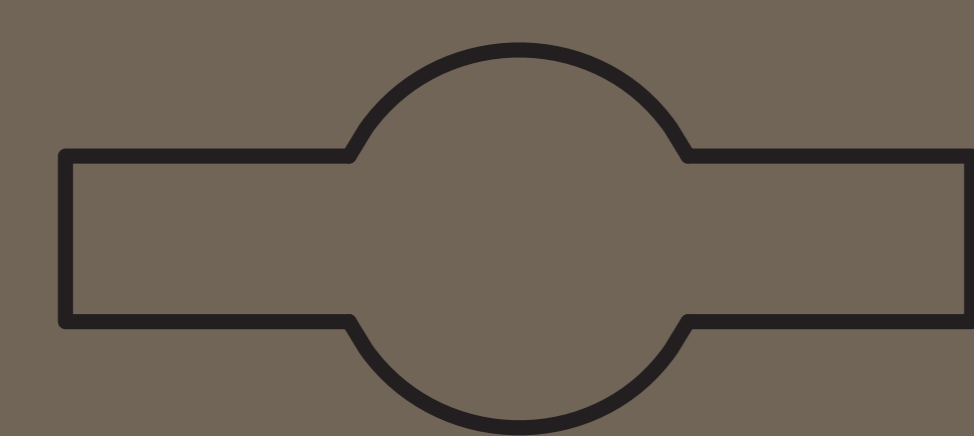
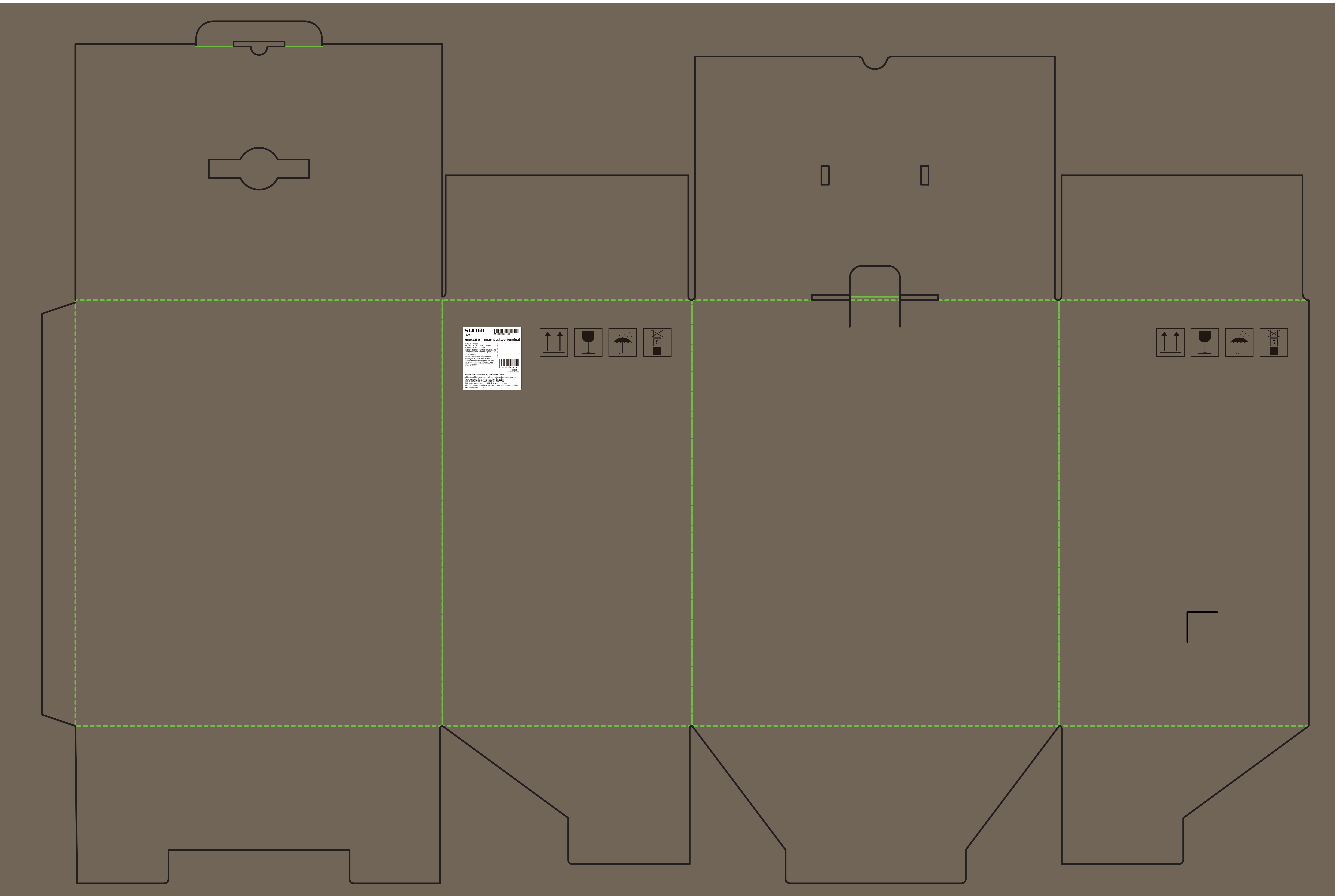
D2s 2nd GEN POS System
 Model: L1593
 Input: 24V 2.5A
 SN: XXXXXXXXXXXXX
 Shanghai Sunmi Technology Co., Ltd. Made in China

UK CA CE



主机贴纸粘贴位置





Sunmi
D2s
Smart Desktop Terminal

Barcode and additional product information.

